

***THE PROVINCE OF
GAUTENG***

***DIE PROVINSIE
GAUTENG***

**Provincial Gazette Extraordinary
Buitengewone Provinsiale Koerant**

Vol. 16

**PRETORIA, 19 MARCH
MAART 2010**

No. 42

IMPORTANT NOTICE

The Government Printing Works will not be held responsible for faxed documents not received due to errors on the fax machine or faxes received which are unclear or incomplete. Please be advised that an "OK" slip, received from a fax machine, will not be accepted as proof that documents were received by the GPW for printing. If documents are faxed to the GPW it will be the sender's responsibility to phone and confirm that the documents were received in good order.

Furthermore the Government Printing Works will also not be held responsible for cancellations and amendments which have not been done on original documents received from clients.

CONTENTS • INHOUD

<i>No.</i>		<i>Page No.</i>	<i>Gazette No.</i>
GENERAL NOTICES			
849	Gauteng Transport Infrastructure Act (8/2001): Proclamation of access roads in connection with Provincial Road K29: District Krugersdorp.....	3	42
850	do.: Proclamation of portions of a provincial railway line in connection with the Gautrain Rapid Link between Pretoria, Johannesburg and the OR Tambo International Airport.....	5	42
851	do.: Implementation of the preliminary design for the Gautrain Rapid Rail Link: Section between Rhodesfield and OR Tambo International Airport (ORTIA).....	7	42

GENERAL NOTICES

NOTICE 849 OF 2010

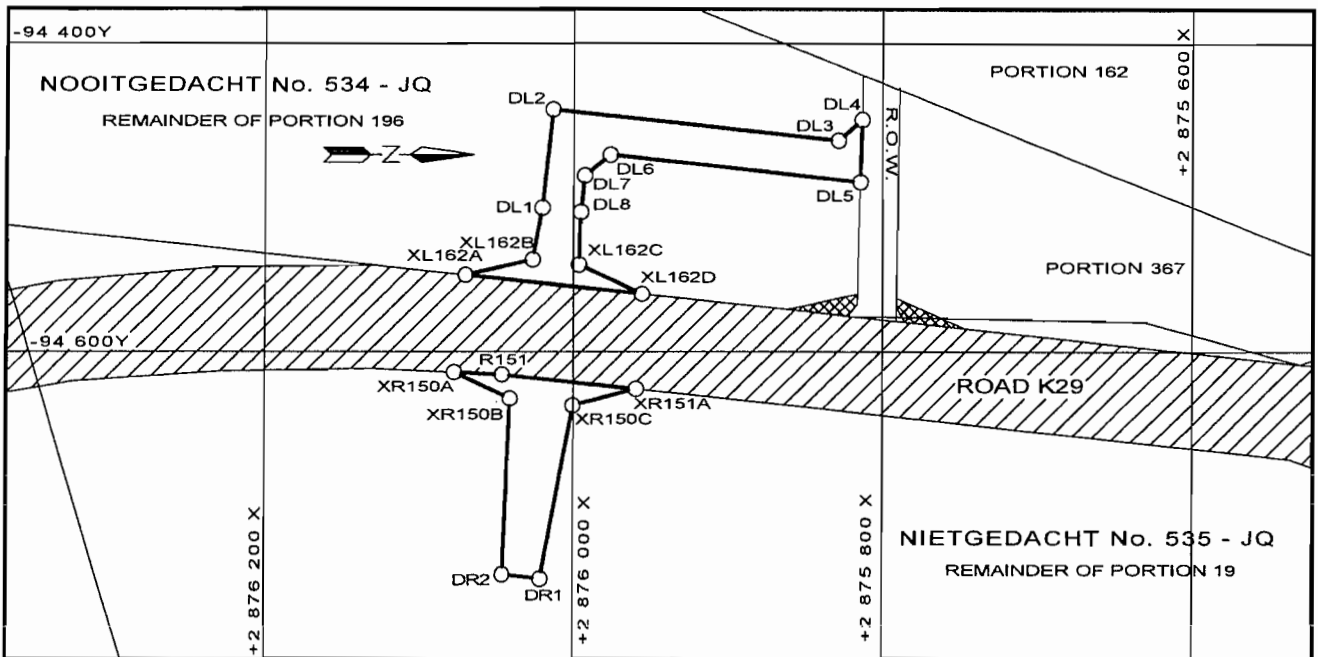
PROCLAMATION OF ACCESS ROADS IN CONNECTION WITH PROVINCIAL ROAD K29: DISTRICT KRUGERSDORP

In terms of section 13(1) of the Gauteng Transport Infrastructure Act, 2001 (Act No. 8 of 2001) ("the Act") the MEC proclaims that access roads exist on the land as described and indicated by the figures on the accompanying sketch plans.

In terms of section 23(6) of the aforementioned act it is hereby stated that boundary beacons demarcating the said access roads, have been placed and that plan GRP1/47/4 EXP indicating the land encroached upon by virtue of the proclamation of the access roads, are available for inspection by any interested person in the Plan Room of the Department of Roads and Transport, Sage Life Building, 41 Simmonds Street, Johannesburg.

Reference: 2/1/1/2/3/1-K29 (1)

MEC Resolution 017 Dated 05 October 2009



VERWYSINGS / REFERENCE

PAD GEPROKLAMEER ROAD PROCLAIMED		BESTAANDE PAD EXISTING ROAD		PAD K29 GESLUIT ROAD K29 CLOSED	
-------------------------------------	--	--------------------------------	--	------------------------------------	--

DIE FIGURE XL162A, XL162B, DL1-DL8, XL162C, XL162D, XL162A EN XR150A, R151, XR151A, XR150C, DR1, DR2, XR150B, XR150A VERTEENWOORDIG DIE PROKLAMASIE VAN DIE BETROKKE GEDEELTES VAN TOEGANGSPAARIE OOR DIE RESTANT VAN GEDEELTE 196 VAN DIE PLAAS NOOITGEDACHT 534-JQ EN DIE RESTANT VAN GEDEELTE 19 VAN DIE PLAAS NIETGEDAGHT 535-JQ EN DIE SKETS TOON VOORTS DIE SLUITING VAN GEDEELTES VAN PROVINSIALE PAD K29 ASOOK DIE SLUITING VAN DIE TOEGANG VANUIT DIE REG VAN WEG NA VOORMELDE PAD GELEE IN DIE DISTRIK KRUGERSDORP SOOS BEDOEL BY AFKONDIGING DAARVAN IN DIE PROVINSIALE KOERANT EN IN DETAIL GETOON OP PLAN GRP1/47/4Exp

THE FIGURES XL162A, XL162B, DL1-DL8, XL162C, XL162D, XL162A AND XR150A, R151, XR151A, XR150C, DR1, DR2, XR150B, XR150A REPRESENT THE PROCLAMATION OF THE PORTIONS CONCERNED OF ACCESS ROADS OVER THE REMAINDER OF PORTION 196 OF THE FARM NOOITGEDACHT 534-JQ AND AND THE REMAINDER OF PORTION 19 OF THE FARM NIETGEDAGHT 535-JQ AND FURTHERMORE THE SKETCH DISPLAYS THE CLOSING OF PORTIONS OF PROVINCIAL ROAD K29 AND THE CLOSING OF ACCESS FROM RIGHT OF WAY TO THE ABOVE MENTIONED ROAD LOCATED IN THE KRUGERSDORP DISTRICT AS INTENDED BY PUBLICATION THEREOF IN THE PROVINCIAL GAZETTE AND SHOWN IN DETAIL ON PLAN GRP1/47/4Exp

BUNDEL NR. / FILE NO. 2/1/1/2/3/1-K29(1)

KOÖRDINATE LYS / CO-ORDINATE LIST WG 27° KONST. / CONST. Y = ± 0.000 X = +2 800 000.000

R151	-92 614.858	+76 046.533	DL5	-92 489.528	+75 814.387	XL162A	-92 549.652	+76 070.275
DL1	-92 506.046	+76 020.285	DL6	-92 472.057	+75 976.388	XL162B	-92 539.582	+76 026.416
DL2	-92 442.912	+76 013.477	DL7	-92 485.362	+75 992.910	XL162C	-92 542.798	+75 996.589
DL3	-92 462.843	+75 828.662	DL8	-92 508.726	+75 995.429	XL162D	-92 562.002	+75 955.893
DL4	-92 449.457	+75 813.367	DR1	-92 747.343	+76 021.162	XR150A	-92 613.374	+76 077.663
			DR2	-92 744.663	+76 046.018	XR150B	-92 630.515	+76 041.252
						XR150C	-92 634.911	+76 000.488
						XR151A	-92 624.225	+75 959.681

NOTICE 850 OF 2010**PROCLAMATION OF PORTIONS OF A PROVINCIAL RAILWAY LINE IN CONNECTION WITH THE GAUTRAIN RAPID RAIL LINK BETWEEN PRETORIA, JOHANNESBURG AND THE O R TAMBO INTERNATIONAL AIRPORT**

In terms of section 11(1)(b) of the Gauteng Transport Infrastructure Act, 2001 (Act No 8 of 2001) the MEC hereby proclaims that portions of a provincial railway line with varying widths exist on the land as described and indicated by the figures on the accompanying sketch plans.

In terms of section 23(6) of the aforementioned act it is hereby stated that plans GRP03/38/37Exp-38Exp which indicate the land affected by the portions of the railway line in detail, are available for inspection during office hours at the office of the Department of Roads and Transport, First Floor, South Tower, Sage Life Building, 41 Simmonds Street, Johannesburg.

Reference: 2/1/7/8-Gautrain

NOTICE 851 OF 2010**IMPLIMENTATION OF THE PRELIMINARY DESIGN FOR THE GAUTRAIN RAPID
RAIL LINK: SECTION BETWEEN RHODESFIELD AND O R TAMBO
INTERNATIONAL AIRPORT (ORTIA)**

In terms of section 8(7) of the Gauteng Transport Infrastructure Act, 2001 (Act No 8 of 2001) ("the Act") it is hereby notified for general information that the Member of the Executive Council for the Gauteng Province ("the MEC") for the Department of Roads and Transport has considered and accepted the Preliminary Design for the Gautrain Rapid Rail Link section between Rhodesfield and O R Tambo International Airport (ORTIA) for implementation. The acceptance concerns those sections of the railway line published for public comments in Notice 4027 of 2006 in the Provincial Gazette Extraordinary, 361 of 26 September 2006.

It should further be noted that the regulatory measures provided for in section 7 of the Act in respect of the route cease to apply from the date of this notice to the extent of the route along or over which the preliminary design was accepted by the MEC in terms of the section 8(7) of the Act and that the regulatory measures contained in section 9 of the aforementioned Act apply with relation to the accepted preliminary design from the date of this notice.

In terms of regulation 8 of the Gauteng Transport Infrastructure Regulations, 2002, interested and affected parties are hereby notified in accordance with regulation 24(2) of the aforementioned Regulations that they may request reasons for the acceptance of the aforementioned preliminary design within 21 days after the date of this notice at the following address: Head: Department of Roads and Transport, Private Bag X83, Marshalltown, 2017, for attention: Director: Design, quoting reference number 2/1/7/8-Gautrain.

In terms of section 8(7) (b) of the Act notice is hereby given that the preliminary design in question is reflected on plans contained in Report Book No. 1895 which is available for inspection by any interested person, at the Plan Room of the Department of Roads and Transport, First Floor, South Tower, Sage Life Building, 41 Simmonds Street, Johannesburg.

MEC Resolution 019 Dated 13 March 2010

Reference: 2/1/7/8-Gautrain
