

***THE PROVINCE OF
GAUTENG***

***DIE PROVINSIE
GAUTENG***

**Provincial Gazette Extraordinary
Buitengewone Provinsiale Koerant**

Vol. 16

PRETORIA, 13 APRIL 2010

No. 60

IMPORTANT NOTICE

The Government Printing Works will not be held responsible for faxed documents not received due to errors on the fax machine or faxes received which are unclear or incomplete. Please be advised that an "OK" slip, received from a fax machine, will not be accepted as proof that documents were received by the GPW for printing. If documents are faxed to the GPW it will be the sender's responsibility to phone and confirm that the documents were received in good order.

Furthermore the Government Printing Works will also not be held responsible for cancellations and amendments which have not been done on original documents received from clients.

CONTENTS • INHOUD

<i>No.</i>		<i>Page No.</i>	<i>Gazette No.</i>
GENERAL NOTICES			
1122	Gauteng Transport Infrastructure Act (8/2001): Proclamation of the increase in width of a portion of the Provincial Railway Link in respect of the Gautrain Rapid Railway Line between Pretoria, Johannesburg and the OR Tambo International Airport.....	3	60
1123	do.: Proclamation of a Provincial Railway Line in connection with the Gautrain Rapid Rail Link between Pretoria, Johannesburg and the OR Tambo International Airport	5	60
1124	do.: do	8	60

GENERAL NOTICES

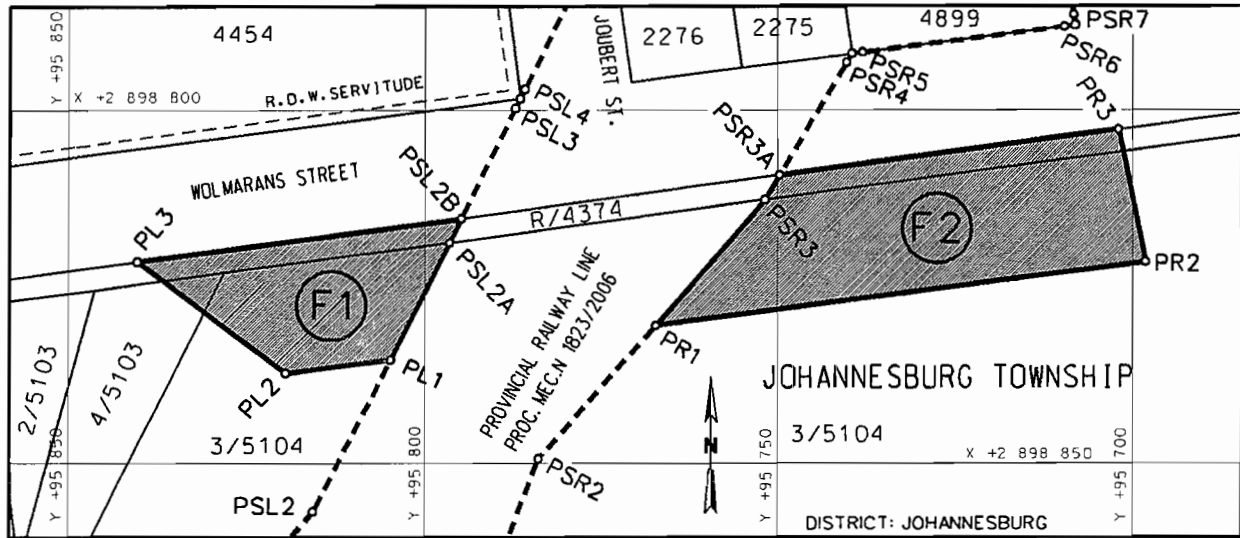
NOTICE 1122 OF 2010

PROCLAMATION OF THE INCREASE IN WIDTH OF A PORTION OF THE PROVINCIAL RAILWAY LINK IN RESPECT OF THE GAUTRAIN RAPID RAILWAY LINE BETWEEN PRETORIA, JOHANNESBURG AND THE O R TAMBO INTERNATIONAL AIRPORT

In terms of section 11(2) of the Gauteng Transport Infrastructure Act, 2001 (Act No 8 of 2001) the MEC hereby proclaims the increase in width of a portion of the provincial railway line on the Remainder of Stand 4374, Portion 4 of Stand 5103 and Portion 3 of Stand 5104 in Johannesburg, as indicated on the accompanying sketch plan.

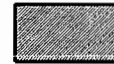
In terms of section 23(6) of the aforementioned act it is hereby declared that plan GRP 03/38/01 Exp which indicates the land encroached upon by the increase in width of the railway line in detail, is available for inspection at the office of the Department of Roads and Transport, First Floor, South Tower, Sage Life Building, 41 Simmonds Street, Johannesburg, during office hours.

Reference: 2/1/7/8 Gautrain



REFERENCE

PROCLAMATION OF THE INCREASE IN WIDTH OF RAILWAY LINE



THE FIGURES : (1) PL1, PL2, PL3, PSL2B, PSL2A, PL1.
 (2) PR1, PSR3, PSR3A, PR3, PR2, PR1.

REPRESENT THE PROCLAMATION OF THE INCREASE IN WIDTH OF THE RAILWAY LINE OVER THE REMAINDER OF STAND 4374, PORTION 4 OF STAND 5103 AND PORTION 3 OF STAND 5104 IN JOHANNESBURG AS INTENDED BY THE PUBLICATION THEREOF IN THE PROVINCIAL GAZETTE AND SHOWN IN DETAIL ON PLAN GRP 03/38/01Exp.

FILE NO. 2/1/7/8-GAUTRAIN

CO-ORDINATE LIST WG 29° CONST. Y= +/- 0.00 X= +2 800 000.00

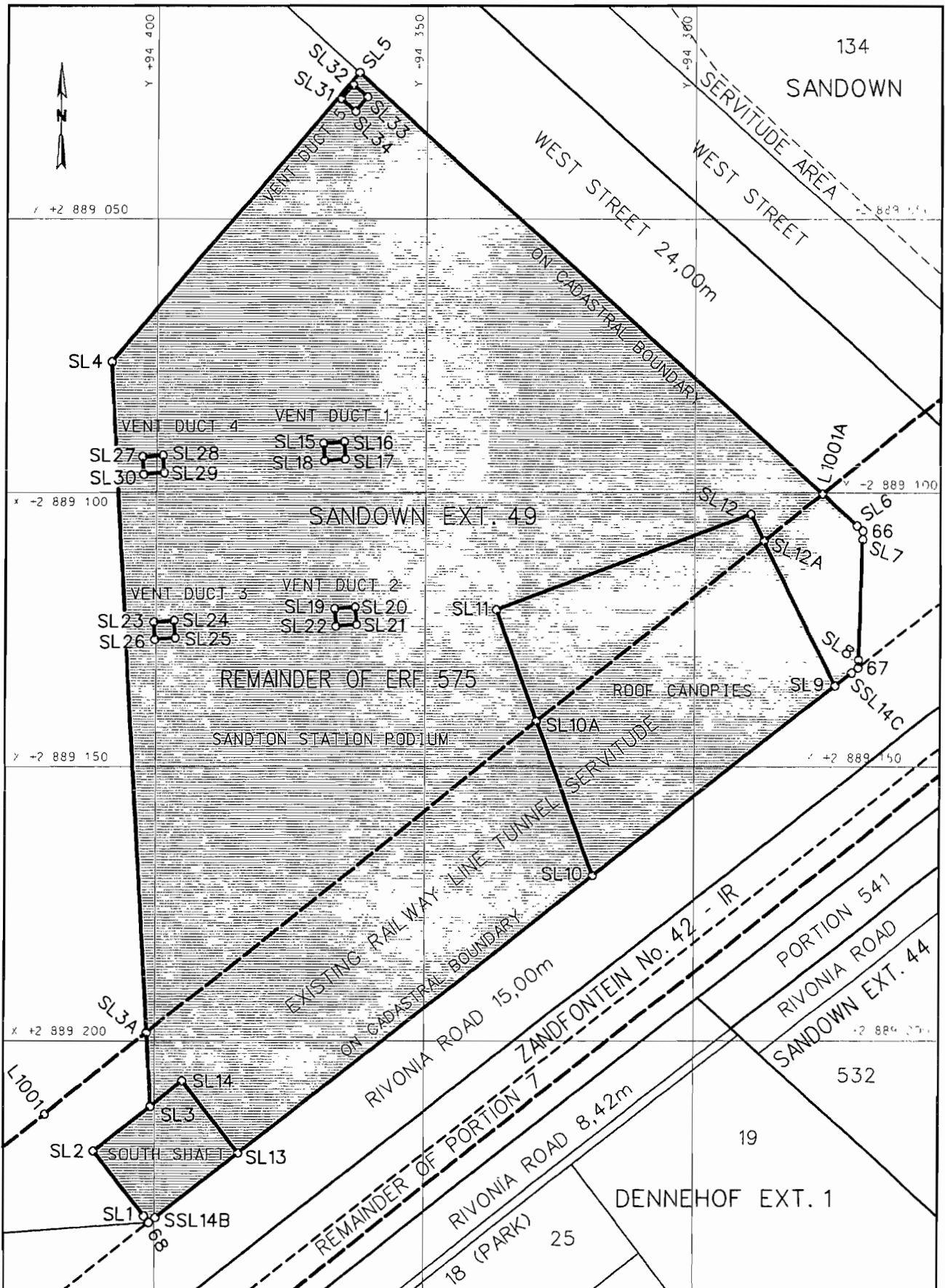
PL1	+95804.791	+98835.244	PR1	+95767.195	+98830.355	PSL2A	+95796.532	+98818.633
PL2	+95919.450	+98837.150	PR2	+95698.117	+98821.372	PSL2B	+95794.838	+98815.225
PL2A	+95830.879	+98828.439	PR2A	+95701.306	+98805.864	PSR3	+95751.725	+98812.625
PL3	+95840.228	+98821.311	PR3	+95701.943	+98802.769	PSR3A	+95749.676	+98809.169

NOTICE 1123 OF 2010**PROCLAMATION OF A PROVINCIAL RAILWAY LINE IN CONNECTION WITH THE GAUTRAIN RAPID RAIL LINK BETWEEN PRETORIA, JOHANNESBURG AND THE O R TAMBO INTERNATIONAL AIRPORT**

In terms of section 11(1)(b) of the Gauteng Transport Infrastructure Act, 2001 (Act No 8 of 2001) the MEC hereby proclaims that a provincial railway line with varying widths, which includes Sandton Station, exists on the Remainder of Erf 575 in Sandown Extension 49, as indicated on the accompanying sketch plan.

In terms of section 23(6) of the aforementioned act it is hereby declared that plan GRP 03/38/06 Exp which indicates the land encroached upon by the railway line in detail, is available for inspection at the office of the Department of Roads and Transport, First Floor, South Tower, Sage Life Building, 41 Simmonds Street, Johannesburg, during office hours.

Reference: 2/1/7/8 Gautrain



REFERENCE

PROCLAIMED RAILWAY LINE



THE FIGURES : (1) 68, SL1 - SL6, 67, SSL14C, SL9, SL10, SL13, SSL14B, 68.
 (2) SL10, SL10A, SL11, SL12, SL12A, SL9, SL10.
 (3) 68, SL1, SL2, SL3, SL14, SL13, SSL14B, 68.
 (4) SL15 - SL18, SL15.
 (5) SL19 - SL22, SL19.
 (6) SL23 - SL26, SL23.
 (7) SL27 - SL30, SL27.
 (8) SL31 - SL34, SL31.

REPRESENT THE PROCLAMATION OF THE PORTION CONCERNED OF THE RAILWAY LINE, WHICH INCLUDES SANDTON STATION WITH ROOF CANOPIES, SOUTH SHAFT AND VENT DUCTS 1 - 5 OVER THE REMAINDER OF ERF 575 IN SANDOWN EXTENSION 49 AS INTENDED BY THE PUBLICATION THEREOF IN THE PROVINCIAL GAZETTE AND SHOWN IN DETAIL ON PLAN GRP 03/38/06Exp.

FILE NO. 2/1/7/8-GAUTRAIN

CO-ORDINATE LIST WG 29° CONST. Y= +/- 0.00 X= +2 800 000.00

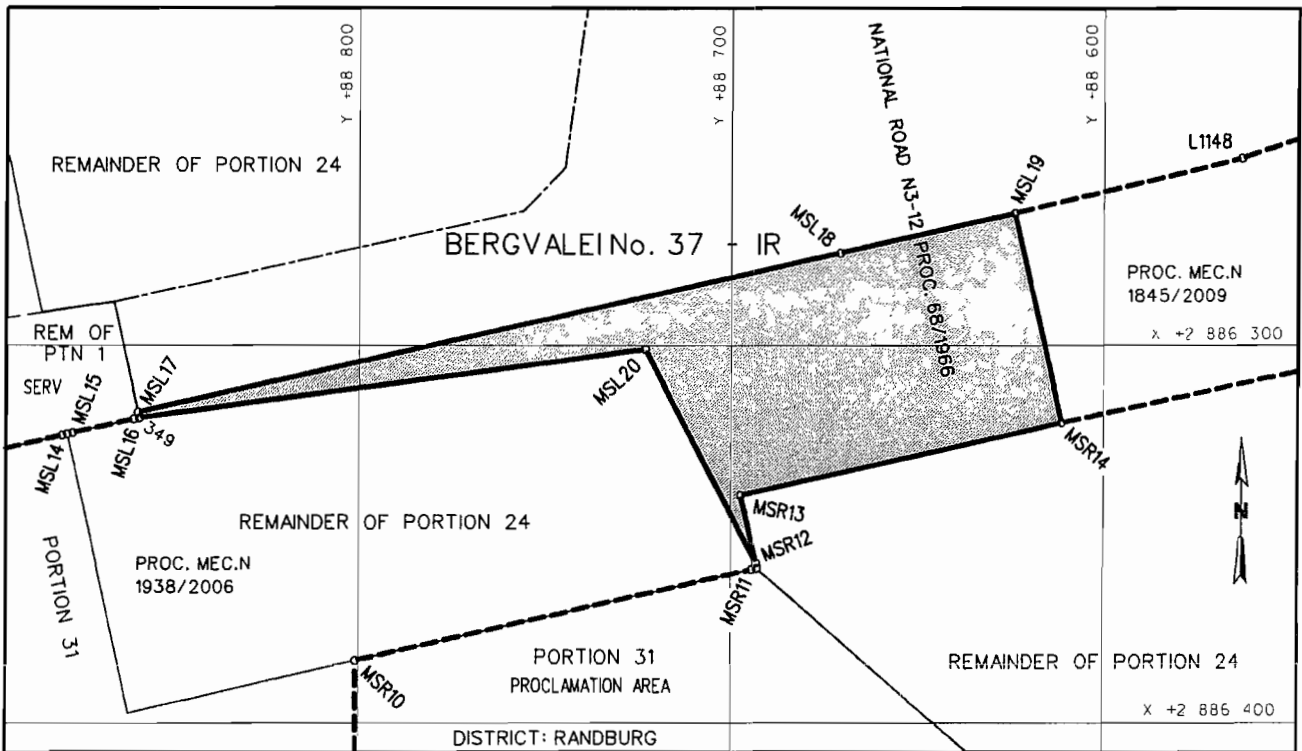
SL1	+94401.906	+89232.190	SL13	+94384.460	+89220.608	SL28	+94398.855	+89093.242
SL2	+94411.277	+89220.252	SL14	+94394.855	+89207.365	SL29	+94398.622	+89096.433
SL3	+94400.718	+89211.968	SL15	+94369.134	+89091.070	SL30	+94402.412	+89096.710
SL3A	+94401.478	+89198.494	SL16	+94365.345	+89090.793	SL31	+94366.100	+89028.027
SL4	+94408.380	+89076.096	SL17	+94365.111	+89093.985	SL32	+94363.839	+89025.409
SL5	+94362.684	+89023.202	SL18	+94368.901	+89094.262	SL33	+94361.222	+89027.669
SL6	+94269.909	+89105.942	SL19	+94366.941	+89121.090	SL34	+94363.484	+89030.287
SL7	+94268.840	+89108.439	SL20	+94363.151	+89120.813	SSL14B	+94399.793	+89232.453
SL8	+94269.579	+89130.422	SL21	+94362.918	+89124.005	SSL14C	+94270.857	+89132.847
SL9	+94273.909	+89135.205	SL22	+94366.708	+89124.282	66	+94268.790	+89106.940
SL10	+94318.700	+89169.807	SL23	+94400.452	+89123.539	67	+94269.670	+89131.930
SL10A	+94329.148	+89141.719	SL24	+94396.662	+89123.262	68	+94400.980	+89233.370
SL11	+94336.739	+89121.310	SL25	+94396.428	+89126.453			
SL12	+94289.548	+89103.902	SL26	+94400.218	+89126.730			
SL12A	+94287.132	+89108.739	SL27	+94402.645	+89093.519			

NOTICE 1124 OF 2010**PROCLAMATION OF A PROVINCIAL RAILWAY LINE IN CONNECTION WITH THE GAUTRAIN RAPID RAIL LINK BETWEEN PRETORIA, JOHANNESBURG AND THE O R TAMBO INTERNATIONAL AIRPORT**

In terms of section 11(1)(b) of the Gauteng Transport Infrastructure Act, 2001 (Act No 8 of 2001) the MEC hereby proclaims that a provincial railway line, with varying widths, exists on the Remainder of Portion 24 of the farm Bergvlei 37-IR, district Randburg, as indicated on the accompanying sketch plan.

In terms of section 23(6) of the aforementioned act it is hereby declared that plan GRP 03/38/09 Exp which indicates the land encroached upon by the railway line in detail, is available for inspection at the office of the Department of Roads and Transport, First Floor, South Tower, Sage Life Building, 41 Simmonds Street, Johannesburg, during office hours.

Reference: 2/1/7/8 Gautrain



REFERENCE / VERWYSINGS

GEPROKLAAMEERDE SPOORLYN
PROCLAIMED RAILWAY LINE



DIE FIGUUR / THE FIGURE : 349, MSL17, MSL18, MSL19, MSR14, MSR13, MSR12, MSL20, 349.

VERTEENWOORDIG DIE PROKLAMASIE VAN DIE BETROKKE GEDEELTE VAN DIE SPOORLYN OOR DIE RESTANT VAN GEDEELTE 24 VAN DIE PLAAS BERGVALEI 37-IR SOOS BEDOEL BY DIE AFKONDIGING DAARVAN IN DIE PROVINSIALE KOERANT EN IN DETAIL GETOON OP PLAN GRP 03/38/09Exp

REPRESENTS THE PROCLAMATION OF THE PORTION CONCERNED OF THE RAILWAY LINE OVER THE REMAINDER OF PORTION 24 OF THE FARM BERGVALEI 37-IR AS INTENDED BY THE PUBLICATION THEREOF IN THE PROVINCIAL GAZETTE AND SHOWN IN DETAIL ON PLAN GRP 03/38/09Exp.

BUNDEL NR. / FILE NO. 2/17/8-GAUTRAIN

KOÖRDINATE LYS/CO-ORDINATE LIST WG 29° KONST./CONST. Y= +/- 0.00 X= +2 800 000.00

MSL17	+88859.627	+86317.646	MSR12	+88693.208	+86357.816	349	+88859.300	+86319.110
MSL18	+88670.699	+86275.419	MSR13	+88697.251	+86339.791			
MSL19	+88623.775	+86264.862	MSR14	+88611.156	+86320.448			
MSL20	+88723.060	+86301.050						