

***THE PROVINCE OF
GAUTENG***

***DIE PROVINSIE
GAUTENG***

**Provincial Gazette Extraordinary
Buitengewone Provinsiale Koerant**

Vol. 16

PRETORIA, 28 APRIL 2010

No. 67

IMPORTANT NOTICE

The Government Printing Works will not be held responsible for faxed documents not received due to errors on the fax machine or faxes received which are unclear or incomplete. Please be advised that an "OK" slip, received from a fax machine, will not be accepted as proof that documents were received by the GPW for printing. If documents are faxed to the GPW it will be the sender's responsibility to phone and confirm that the documents were received in good order.

Furthermore the Government Printing Works will also not be held responsible for cancellations and amendments which have not been done on original documents received from clients.

CONTENTS

<i>No.</i>		<i>Page No.</i>	<i>Gazette No.</i>
GENERAL NOTICES			
1247	Gauteng Transport Infrastructure Act (8/2001): Proposed taking over by Plumari Game Ranch of a portion of Provincial road D99 between Provincial Roads P123-1 and 465: District Krugersdorp.....	3	67
1249	Gauteng Transport Infrastructure Act (8/2001): Proclamation of the increase in width of a portion of Provincial Road K103: District Pretoria.....	5	67
1250	do.: Proclamation of the increase in width of a portion of Provincial Road K71: District Pretoria.....	8	67

GENERAL NOTICE

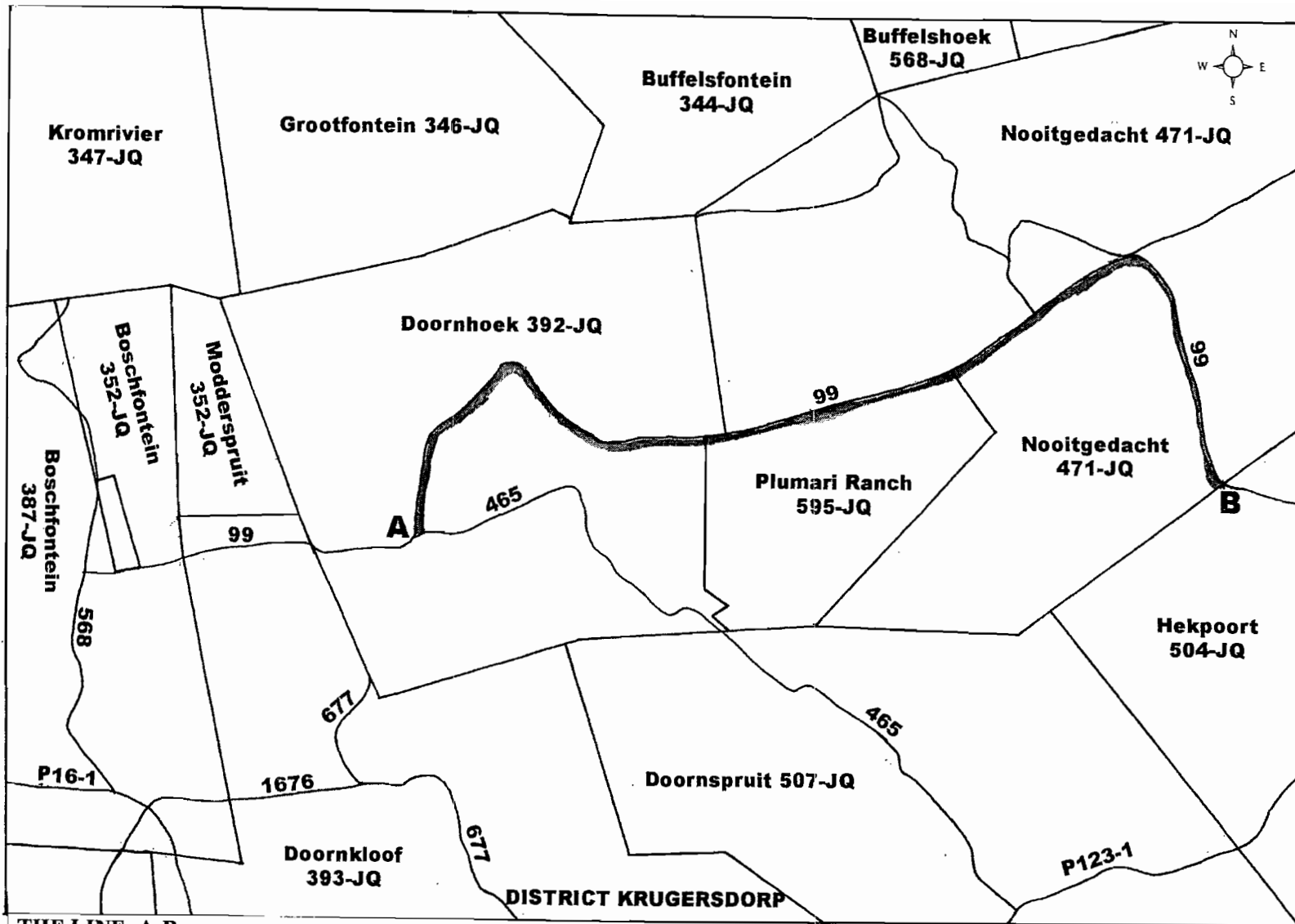
NOTICE 1247 OF 2010

PROPOSED TAKING OVER BY PLUMARI GAME RANCH OF A PORTION OF PROVINCIAL ROAD D99 BETWEEN PROVINCIAL ROADS P123-1 AND 465: DISTRICT KRUGERSDORP

It is hereby notified for general information that an application has been received from Plumari Game Ranch in terms of section 51(2)(a) of the Gauteng Transport Infrastructure Act, 2001, (Act No 8 of 2001) to conclude an agreement with the MEC to take over all responsibilities for or in relation to a portion of provincial road D99 between provincial roads P123-1 and 465, District Krugersdorp, as depicted on the accompanying sketch plan, inter alia, on condition that the road stays open as a public road subject to certain access control measures.

Interested persons are called upon to, within 30 days from the date of this notice, submit written comments or objections, with reasons, in the above regard for consideration by the MEC, to the Head: Department of Roads and Transport, (Attention: Director Design) 41 Simmonds Street, Sage Life Building, Johannesburg (Private Bag X83 Marshalltown, 2107).

Reference: 2/1/1/2/3/1 – D99



THE LINE: A-B

**REPRESENTS THE PROPOSED TAKING OVER OF A PORTION
OF PROVINCIAL ROAD D99 AS CONTEMPLATED BY THE
PUBLICATION THEREOF IN THE PROVINCIAL GAZETTE**

FILE NO: 2/1/1/2/3/1 -D99

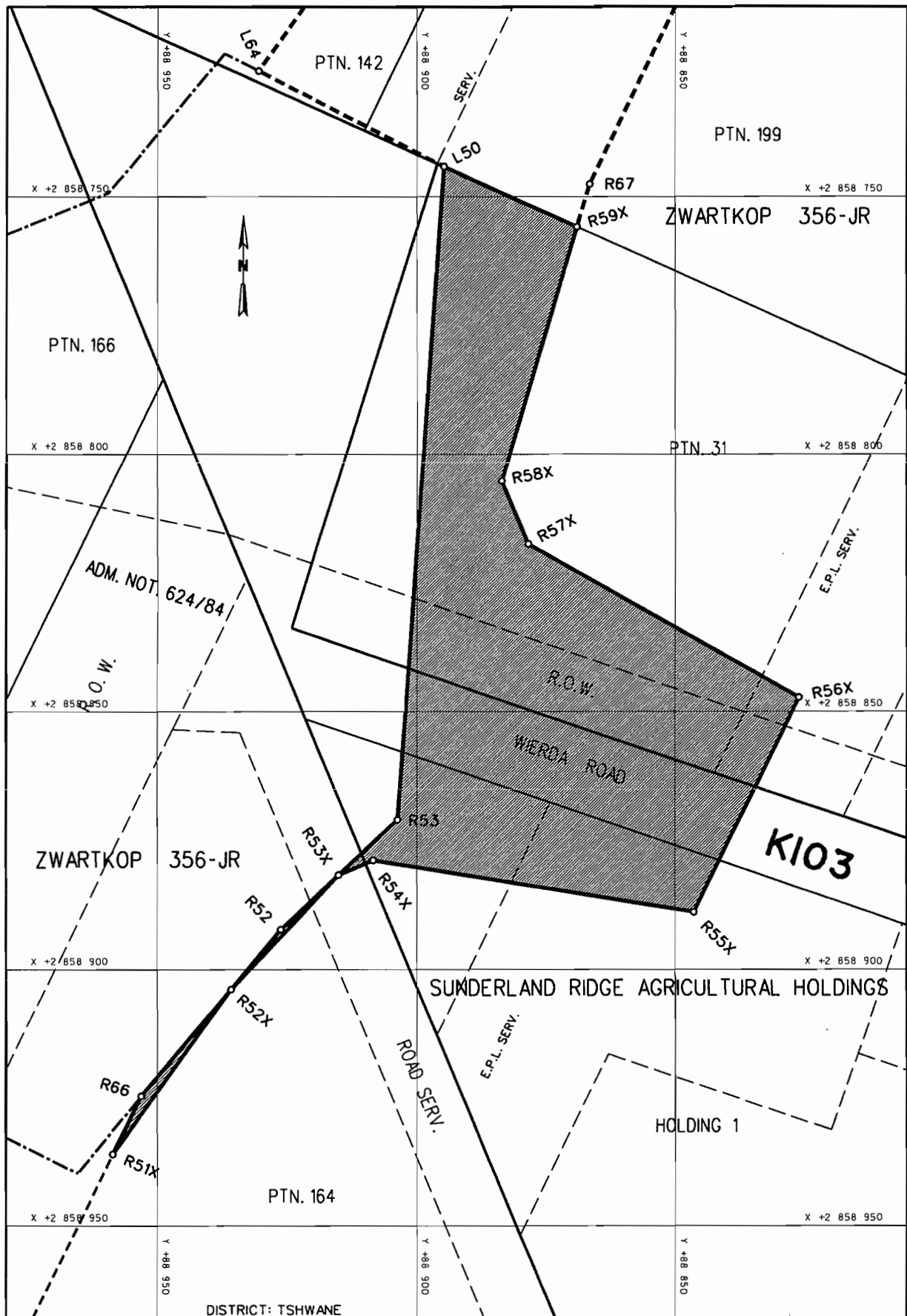
NOTICE 1249 OF 2010**PROCLAMATION OF THE INCREASE IN WIDTH OF A PORTION OF PROVINCIAL ROAD K103: DISTRICT PRETORIA**

In terms of section 11(2) of the Gauteng Transport Infrastructure Act, 2001 (Act No. 8 of 2001) the MEC hereby proclaims the increase in width of a portion of provincial road K103 on the land as described and indicated by the figures on the accompanying sketch plan.

In terms of section 23(6) of the aforementioned act, it is hereby stated that plan GRP 08/25/1-1Exp which indicate the land encroached upon by the increase in width of the road in detail, are available for inspection by any interested person during office hours in the Plan Room of the Department of Roads and Transport, Sage Life Building, 41 Simmonds Street, Johannesburg.

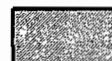
Reference: 2/1/1/2/3/1-P66-1 (K71)

MEC Resolution 018 dated 5 October 2009



REFERENCE / VERWYSINGS

PROKLAMASIE VAN DIE VERMEERDERING IN BREEDTE VAN PAD
 PROCLAMATION OF THE INCREASE IN WIDTH OF ROAD



DIE FIGUUR : R51X, R66, R52 - R53, L50, R59X - R51X.
 THE FIGURE :

VERTEENWOORDIG DIE PROKLAMASIE VAN DIE VERMEERDERING IN BREEDTE VAN DIE BETROKKE GEDEELTE VAN PROVINSIALE PAD K103 OOR HOEWE 1 VAN SUNDERLAND RIDGE LANDBOUHOEWES EN GEDEELTE 31 VAN DIE PLAAS ZWARTKOP 356-JR SOOS BEDOEL BY DIE AFKONDIGING DAARVAN IN DIE PROVINSIALE KOERANT EN IN DETAIL GETOON OP PLAN GRP 08/25/1Exp.

REPRESENTS THE PROCLAMATION OF THE INCREASE IN WIDTH OF THE PORTION CONCERNED OF PROVINCIAL ROAD K103 OVER HOLDING 1 OF SUNDERLAND RIDGE AGRICULTURAL HOLDINGS AND PORTION 31 OF THE FARM ZWARTKOP 356-JR AS INTENDED BY THE PUBLICATION THEREOF IN THE PROVINCIAL GAZETTE AND SHOWN IN DETAIL ON PLAN GRP 08/25/1Exp.

BUNDEL NR. / FILE NO. 2/1/1/2/3/1-P66-1

KOÖRDINATE LYS/CO-ORDINATE LIST WG 29° KONST./CONST. Y= +/- 0.00 X= +2 800 000.00

R51X	+88958.533	+58936.146	R56X	+88826.094	+58847.264	L50	+88840.586	+58153.483
R52X	+88935.797	+58903.886	R57X	+88878.427	+58817.557	R52	+88872.103	+58603.835
R53X	+88915.074	+58881.797	R58X	+88883.515	+58805.178	R53	+88849.585	+58280.454
R54X	+88908.394	+58878.984	R59X	+88868.994	+58755.912			
R55X	+88846.332	+58888.909	R66	+88953.055	+58924.813			

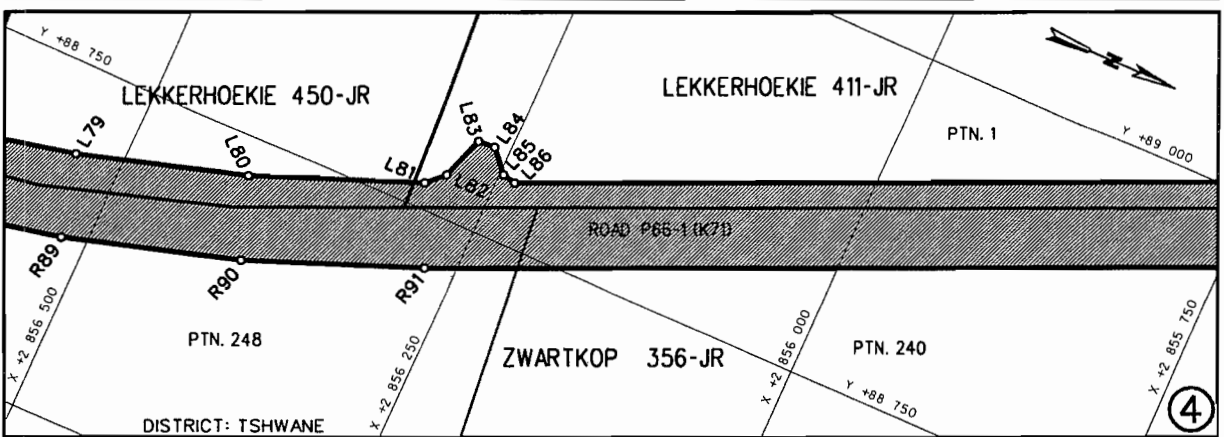
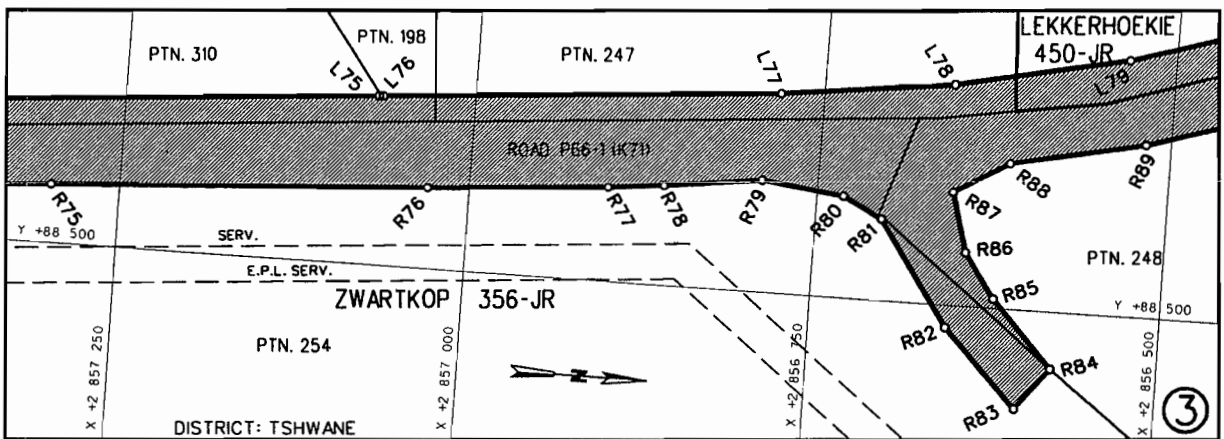
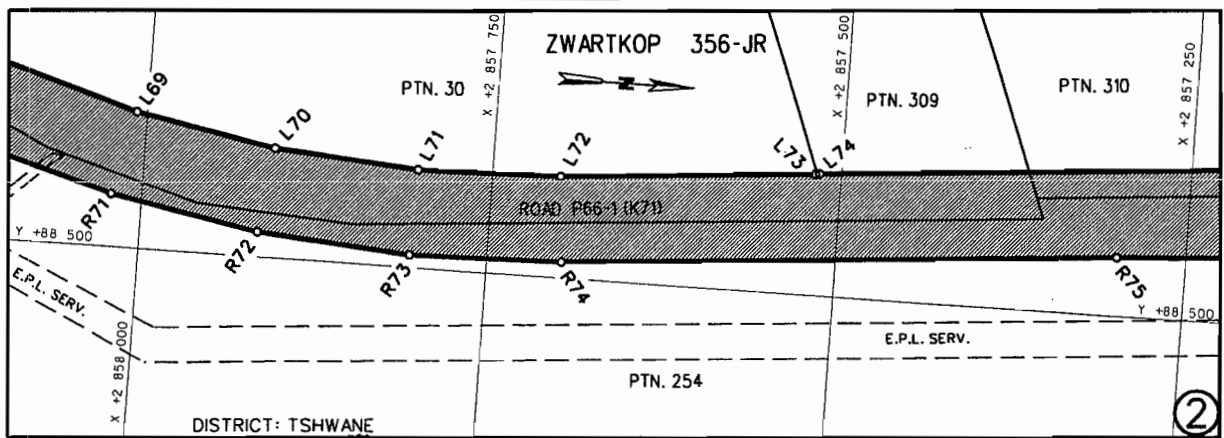
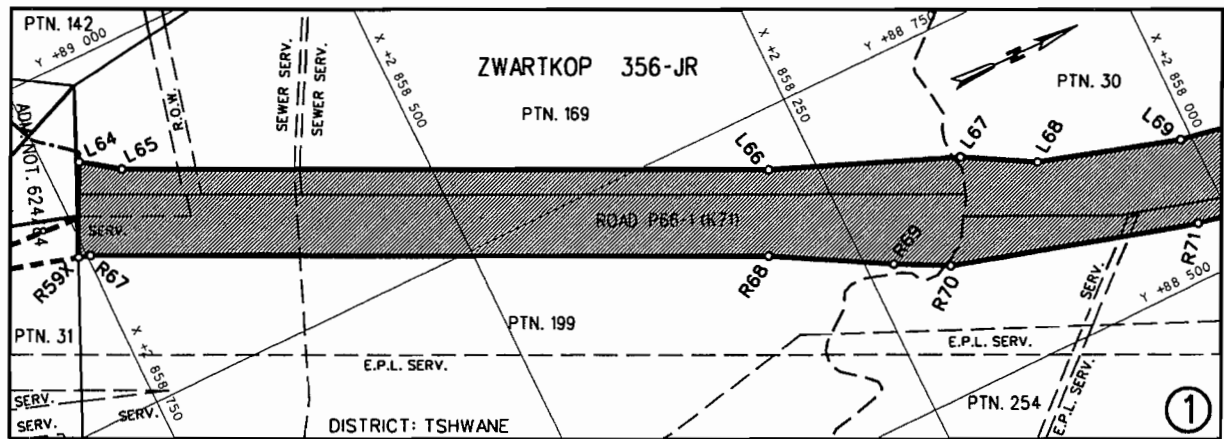
NOTICE 1250 OF 2010**PROCLAMATION OF THE INCREASE IN WIDTH OF A PORTION OF PROVINCIAL ROAD K71: DISTRICT PRETORIA**

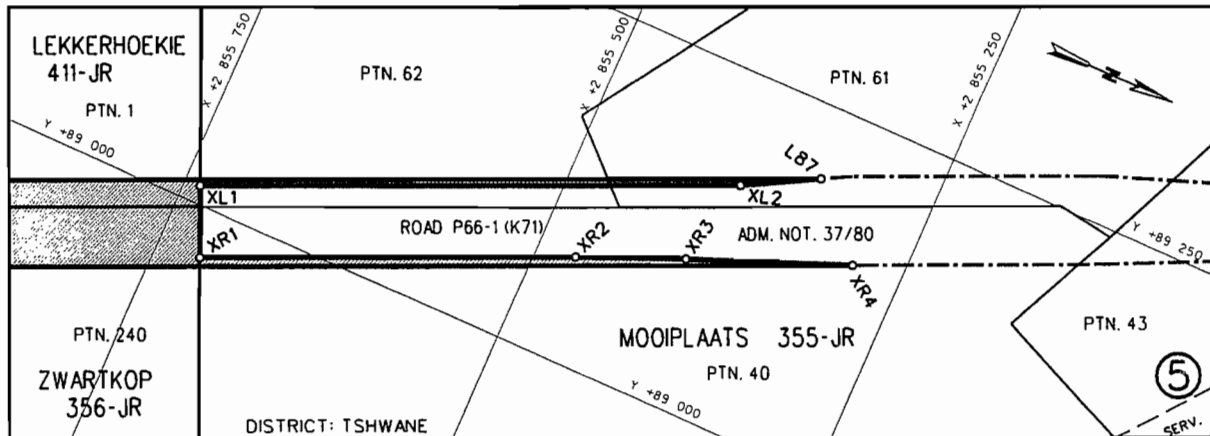
In terms of section 11(2) of the Gauteng Transport Infrastructure Act, 2001 (Act No. 8 of 2001) the MEC hereby proclaims the increase in width of a portion of provincial road K71 on the land as described and indicated by the figures on the accompanying sketch plans.

In terms of section 23(6) of the aforementioned act, it is hereby stated that plans GRP 08/25/1-3Exp which indicate the land encroached upon by the increase in width of the road in detail, are available for inspection by any interested person during office hours in the Plan Room of the Department of Roads and Transport, Sage Life Building, 41 Simmonds Street, Johannesburg.

Reference: 2/1/1/2/3/1-P66-1 (K71)

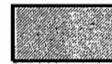
MEC Resolution 018 dated 5 October 2009





REFERENCE / VERWYSINGS

PROKLAMASIE VAN DIE VERMEERDERING IN BREEDTE VAN PAD
 PROCLAMATION OF THE INCREASE IN WIDTH OF ROAD



DIE FIGUUR : L64 - L87, XL2, XL1, XR1 - XR4, R91 - R67, R59X, L64.
 THE FIGURE :

VERTEENWOORDIG DIE PROKLAMASIE VAN DIE VERMEERDERING IN BREEDTE VAN DIE BETROKKE GEDEELTE VAN PROVINSIALE PAD K71 OOR GEDEELTES 169, 30, 309, 310, 198, 247, 199, 254, 248 EN 240 VAN DIE PLAAS ZWARTKOP 356-JR, DIE PLAAS LEKKERHOEKIE 450-JR, GEDEELTE 1 VAN DIE PLAAS LEKKERHOEKIE 411-JR, GEDEELTES 62, 61 EN 40 VAN DIE PLAAS MOOIPLAATS 355-JR SOOS BEDOEL BY DIE AFKONDIGING DAARVAN IN DIE PROVINSIALE KOERANT EN IN DETAIL GETOON OP PLANNE GRP 08/25/1-3Exp.

REPRESENTS THE PROCLAMATION OF THE INCREASE IN WIDTH OF THE PORTION CONCERNED OF PROVINCIAL ROAD K71 OVER PORTIONS 169, 30, 309, 310, 198, 247, 199, 254, 248 AND 240 OF THE FARM ZWARTKOP 356-JR, THE FARM LEKKERHOEKIE 450-JR, PORTION 1 OF THE FARM LEKKERHOEKIE 411-JR, PORTIONS 62, 61 AND 40 OF THE FARM MOOIPLAATS 355-JR AS INTENDED BY THE PUBLICATION THEREOF IN THE PROVINCIAL GAZETTE AND SHOWN IN DETAIL ON PLANS GRP 08/25/1-3Exp.

BUNDEL NR. / FILE NO. 2/11/2/3/1-P66-1

KOÖRDINATE LYS/CO-ORDINATE LIST WG 29° KONST./CONST. Y= +/- 0.00 X= +2 800 000.00

L64	+88930.558	+58725.831	L84	+88813.379	+56261.351	R79	+88581.681	+56790.551
L65	+88912.238	+58699.842	L85	+88796.996	+56247.046	R80	+88574.060	+56730.904
L66	+88708.552	+58282.321	L86	+88794.825	+56237.186	R81	+88559.251	+56702.127
L67	+88656.450	+58154.646	L87	+89198.726	+55331.801	R82	+88484.113	+56650.908
L68	+88628.831	+58106.527				R83	+88428.485	+56598.051
L69	+88598.824	+58007.629	XL1	+88958.457	+55147.656	R84	+88459.090	+56573.729
L70	+88579.570	+57906.477	XL2	+89117.120	+54792.006	R85	+88506.801	+56617.964
L71	+88571.159	+57803.855				R86	+88539.168	+56640.255
L72	+88573.685	+57700.917	R67	+88866.530	+58747.553	R87	+88582.667	+56652.266
L73	+88588.293	+57518.703	R68	+88652.830	+58309.506	R88	+88606.147	+56613.091
L74	+88588.529	+57515.713	R69	+88607.753	+58230.790	R89	+88625.981	+56518.199
L75	+88623.235	+57069.333	R70	+88588.815	+58194.707	R90	+88663.524	+56393.048
L76	+88623.465	+57066.342	R71	+88538.620	+58022.441	R91	+88711.672	+56271.397
L77	+88645.284	+56781.128	R72	+88518.134	+57914.818			
L78	+88660.345	+56656.633	R73	+88509.185	+57805.629	XR1	+88911.577	+55127.316
L79	+88685.989	+56533.788	R74	+88511.872	+57696.105	XR2	+89021.559	+54880.776
L80	+88722.096	+56413.380	R75	+88542.755	+57299.376	XR3	+89052.690	+54807.066
L81	+88768.294	+56296.657	R76	+88559.221	+57029.857	XR4	+89151.277	+55286.027
L82	+88780.204	+56284.686	R77	+88568.813	+56900.194	R59X	+88868.994	+58755.912
L83	+88812.723	+56273.917	R78	+88572.915	+56860.393			