

*THE PROVINCE OF
GAUTENG*

*DIE PROVINSIE
GAUTENG*

**Provincial Gazette Extraordinary
Buitengewone Provinsiale Koerant**

Vol. 16

**PRETORIA, 11 MAY
MEI 2010**

No. 79

IMPORTANT NOTICE

The Government Printing Works will not be held responsible for faxed documents not received due to errors on the fax machine or faxes received which are unclear or incomplete. Please be advised that an "OK" slip, received from a fax machine, will not be accepted as proof that documents were received by the GPW for printing. If documents are faxed to the GPW it will be the sender's responsibility to phone and confirm that the documents were received in good order.

Furthermore the Government Printing Works will also not be held responsible for cancellations and amendments which have not been done on original documents received from clients.

CONTENTS · INHOUD

<i>No.</i>	<i>Page No.</i>	<i>Gazette No.</i>
GENERAL NOTICE		
1336 City of Johannesburg Metropolitan Municipality: Schedules to the 2010 FIFA World Cup South Africa By-laws	3	79

GENERAL NOTICE

NOTICE 1336 OF 2010

The City Of Johannesburg Metropolitan Municipality hereby publishes the following Schedules to the 2010 FIFA World Cup South Africa By-laws promulgated in Provincial Gazette Extraordinary No 36 of 16 February 2009.

9 Chapter 9 – Schedules

Exclusion Zones

Ellis Park Stadium

For the purposes of these by-laws, the exclusion zone applicable for the 2010 FIFA World Cup South Africa for Ellis Park Stadium is as reflected on the attached map indicated as Annexure A, namely the area within the following roads in the Ellis Park precinct:

- Area bordered by Bertrams Road at Charlton Terrace and Voorhout streets
- Area bordered by Siemert Street at Charlton Terrace and Voorhout streets

Soccer City Stadium

For the purposes of these by-laws, the exclusion zone applicable for the 2010 FIFA World Cup South Africa for Soccer City Stadium is as reflected on the attached map indicated as Annexure B, namely the area within the following roads in the Nasrec precinct:

- Area bordered by Nasrec Road
- Area bordered by portion of Soweto Highway
- Area bordered by portion of Golden Highway
- Area bordered by Randshow road

Controlled Access Sites

For the purpose of these bylaws, Controlled Access Sites shall include:

9.2.1 Innes Free Park (FIFA Fan Park)

- Area bordered by Katherine Street and Grayston Drive
- Area bordered by Grayston Drive and M1 North off-ramp and M1 North on-ramp
- Portion of M1 North passing along Innes Free Park

(as reflected on the attached map indicated as Annexure C)

9.2.2 Elka Stadium (FIFA Fan Park)

- Area bordered by Vundla Street
- Area bordered by Gumede Street
- Area bordered by Lefatola Street

(as reflected on the attached map indicated as Annexure D)

9.2.3 Mary Fitzgerald Square (Artists of Africa)

- Area bordered by Bree Street at Henry Nxumalo and Miriam Makeba Street
- Area bordered by Jeppe Street at Henry Nxumalo and Miriam Makeba Street

9.2.4 Park Station (Train station)

- Area bordered by Rissik Street at Wolmarans Street and De Villiers Street
- Area bordered by Wanderers Street at Wolmarans Street and De Villiers Street

9.2.5 Gautrain Station

- Area bordered by West Street
- Area bordered by Rivonia Road
- Area bordered by Maude Street
- Area bordered by 5th Street

9.2.6 No.3 Square Alexandra (Football for Hope)

- Area bordered by London Road at 11th Avenue, 12th Avenue and 13th Avenue

9.2.7 International Broadcasting Centre

- Included in Exclusion zone at Soccer City

Principal Public Roads

For the purposes of these by-laws the Principal Public Roads are identified as:

9.3.1 From Lanseria Airport To Soccer City

- Portion of the road from R512- N14 on-ramp
- Portion of the road from N1 South off-ramp joining Rand Show Road – Golden Highway - stadium precinct

9.3.2 From Lanseria Airport To Ellis Park

- Portion of the road from R512 – N14 on-ramp
- Portion of the road from intersection of Abel and Joe Slovo Roads to Ellis Park stadium

9.3.3 . From O R Tambo International Airport To Ellis Park

- Portion of the road from M2 west off-ramp joining Joe Slovo Drive to Curry Street and then to stadium

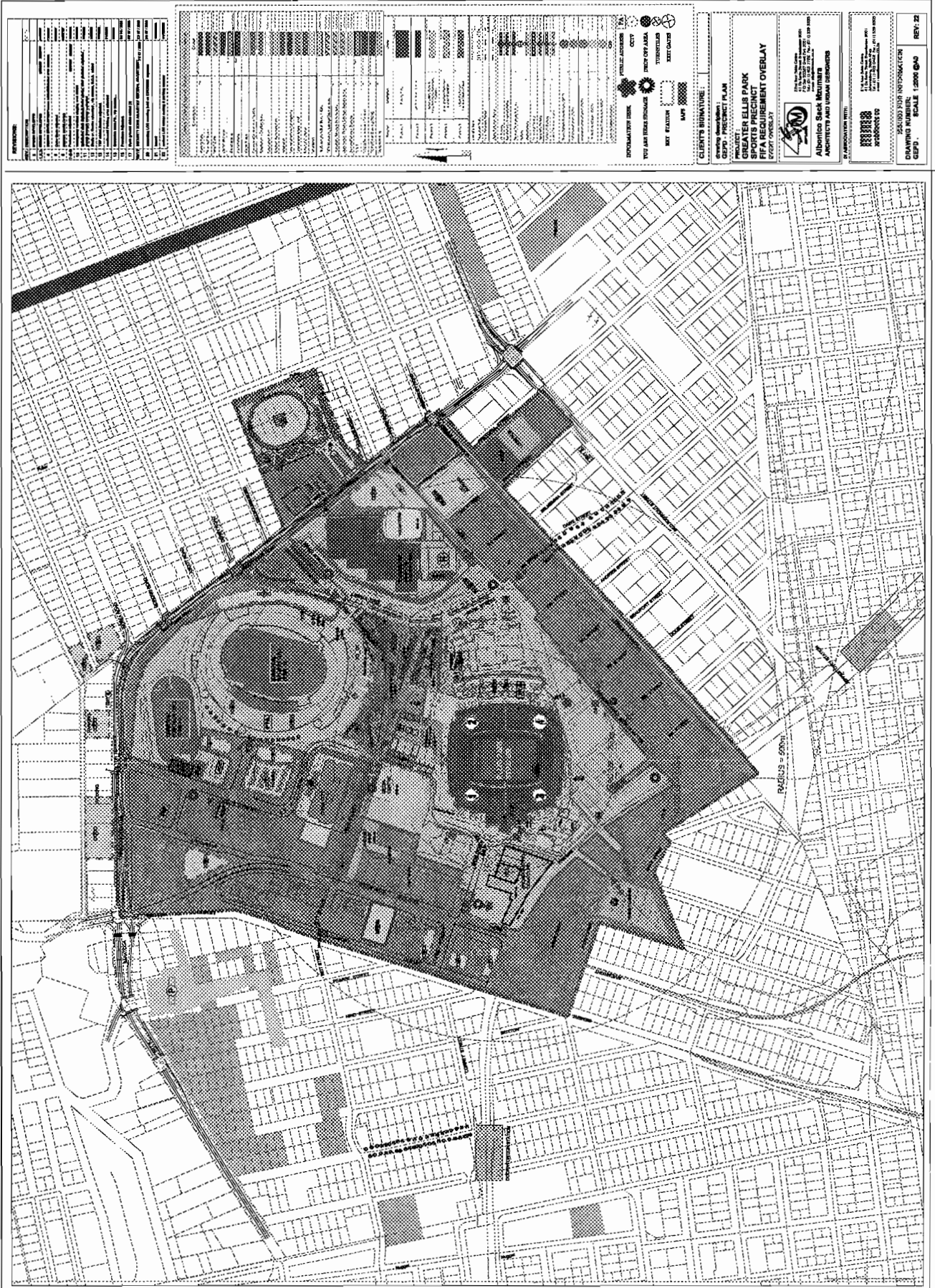
9.3.4 From O R Tambo International Airport To Soccer City

- Portion of the road from M1 South off-ramp joining Nasrec road to Soccer City Stadium

10 Chapter 10 – Term Schedule

For the purposes of these by-laws “Term” means –

25 May 2010 until 31 July 2010



NO.	DESCRIPTION	DATE
1	PROJECT INITIATION	2008-01-01
2	PRELIMINARY DESIGN	2008-02-01
3	FINAL DESIGN	2008-03-01
4	CONSTRUCTION	2008-04-01
5	COMPLETION	2008-05-01
6	OPERATION	2008-06-01

NO.	DESCRIPTION	DATE
1	PROJECT INITIATION	2008-01-01
2	PRELIMINARY DESIGN	2008-02-01
3	FINAL DESIGN	2008-03-01
4	CONSTRUCTION	2008-04-01
5	COMPLETION	2008-05-01
6	OPERATION	2008-06-01

NO.	DESCRIPTION	DATE
1	PROJECT INITIATION	2008-01-01
2	PRELIMINARY DESIGN	2008-02-01
3	FINAL DESIGN	2008-03-01
4	CONSTRUCTION	2008-04-01
5	COMPLETION	2008-05-01
6	OPERATION	2008-06-01

CLIENT'S INFORMATION:
 Greater Edmonton
 Greater Edmonton
GREATER ELLIS PARK
SPORTS PRECINCT
FIFA REQUIREMENT OVERLAY
 10000 100th Ave
 Edmonton, Alberta
 T5C 1B6
 780-443-1100
 www.edmonton.ca

DRAWING NO. 10000 100th Ave
 SCALE 1:2000
 REV. 22

FIFA 2010 World Cup
Fan Feet: Innesfree Park



LEGEND



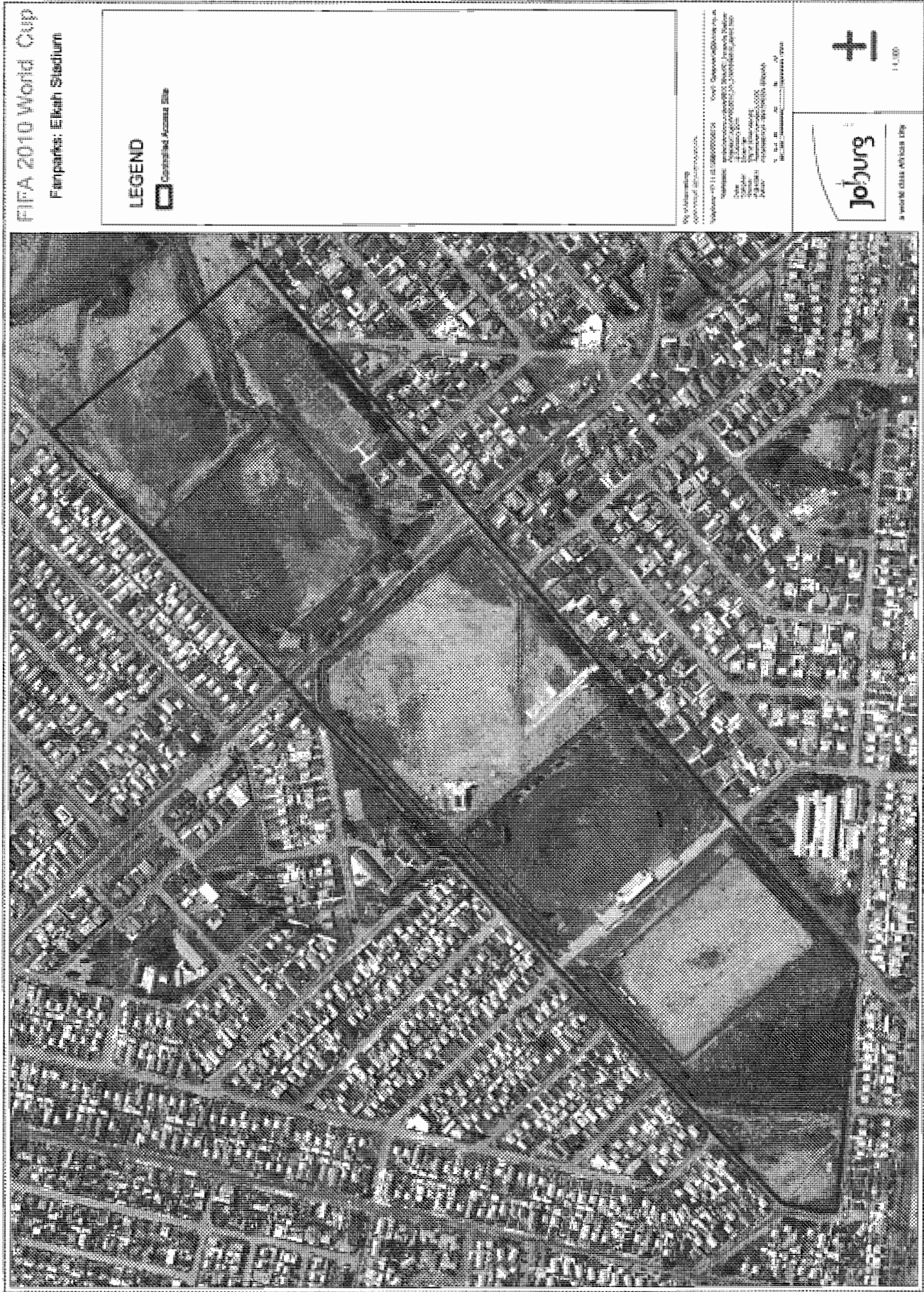
Locality Map

City of Durban
 13th Floor, 130, Durban Road
 Durban 4001, KwaZulu-Natal
 Telephone: 031 300 1000
 Fax: 031 300 1001
 E-mail: city@cityofdurban.gov.za
 Website: www.cityofdurban.gov.za
 City of Durban
 Durban 4001, KwaZulu-Natal
 Telephone: 031 300 1000
 Fax: 031 300 1001
 E-mail: city@cityofdurban.gov.za
 Website: www.cityofdurban.gov.za



Joburg
The City of Johannesburg
Joburg





FIFA 2010 World Cup

Fierparke: Elliekh Stadium

LEGEND

CONSTRUCTION AREA SITE

Joburg
 1:1000
 11 MEI 2010



Joburg
 A WELKOM OESSE WERELDE 2010