

*THE PROVINCE OF  
GAUTENG*

*DIE PROVINSIE  
GAUTENG*

**Provincial Gazette Extraordinary  
Buitengewone Provinsiale Koerant**

Vol. 17

PRETORIA, 13 SEPTEMBER 2011

**No. 210**

**IMPORTANT NOTICE**

The Government Printing Works will not be held responsible for faxed documents not received due to errors on the fax machine or faxes received which are unclear or incomplete. Please be advised that an "OK" slip, received from a fax machine, will not be accepted as proof that documents were received by the GPW for printing. If documents are faxed to the GPW it will be the sender's responsibility to phone and confirm that the documents were received in good order.

Furthermore the Government Printing Works will also not be held responsible for cancellations and amendments which have not been done on original documents received from clients.

**CONTENTS · INHOUD***No.**Page  
No.    Gazette  
          No.***GENERAL NOTICE**

2401	Gauteng Transport Infrastructure Act (8/2001): Proclamation of the reduction in width of a portion of the provincial railway line in respect of the Gautrain Rapid Rail Link between Pretoria, Johannesburg and the OR Tambo International Airport: District Randburg.....	3	210
------	--	---	-----

---

## GENERAL NOTICE

---

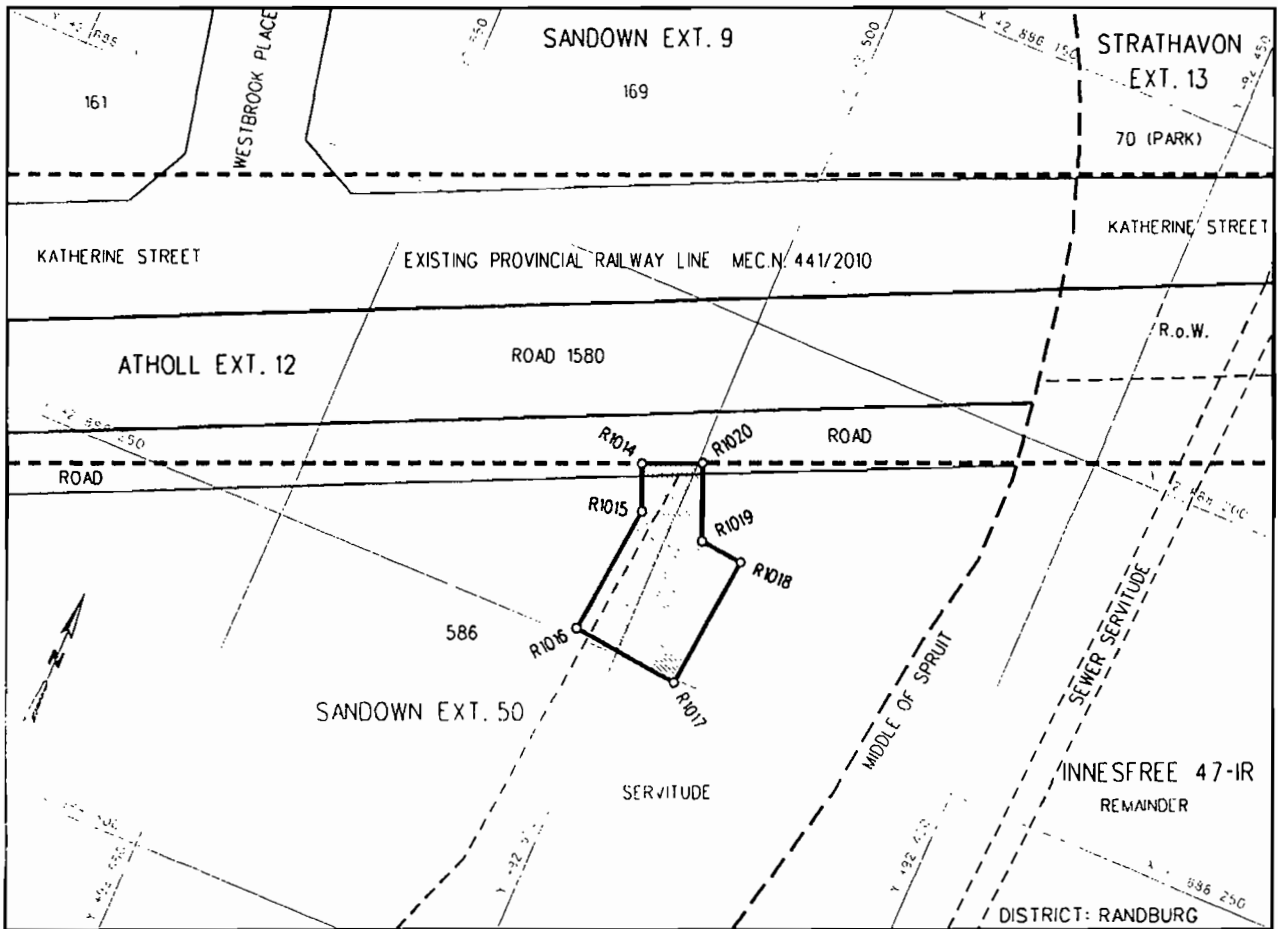
### NOTICE 2401 OF 2011

#### **PROCLAMATION OF THE REDUCTION IN WIDTH OF A PORTION OF THE PROVINCIAL RAILWAY LINE IN RESPECT OF THE GAUTRAIN RAPID RAIL LINK BETWEEN PRETORIA, JOHANNESBURG AND THE O R TAMBO INTERNATIONAL AIRPORT : DISTRICT RANDBURG**

In terms of section 11(2) of the Gauteng Transport Infrastructure Act, 2001 (Act No. 8 of 2001) the MEC hereby proclaims the reduction in width of a portion of the provincial railway line on Erf 586 in Sandown Extension 50 and on a portion of provincial road 1580, district Randburg.

In terms of section 23(6) of the aforementioned act it is hereby declared that plan GRP 03/38/07 Exp, which indicates the reduction in width of the railway line on the land in detail, is available for inspection at the office of the Department of Roads and Transport, First Floor, South Tower, Sage Life Building, 41 Simmonds Street, Johannesburg, during office hours.

Reference: 2/1/7/8 - Gautrain



**REFERENCE**

PROCLAMATION OF THE REDUCTION OF THE WIDTH OF THE RAILWAY LINE



PROVINCIAL RAILWAY LINE



THE FIGURE : R1014, R1015, R1016, R1017, R1018, R1019, R1020, R1014.

REPRESENTS THE PROCLAMATION OF THE REDUCTION OF THE WIDTH OF THE RAILWAY LINE OVER ERF 586 AND A PORTION OF ROAD 1580 IN SANDOWN EXTENSION 50 AS INTENDED BY THE PUBLICATION THEREOF IN THE PROVINCIAL GAZETTE AND SHOWN IN DETAIL ON PLAN GRP 03/38/07Exp.

FILE NO. 2/17/78-GAUTRAIN

**CO-ORDINATE LIST WG 29° CONST. Y= +/- 0.00 X= +2 800 000.00**

R1014	+92507.207	+88224.049	R1017	+92491.018	+88250.423	R1020	+92499.447	+88220.758
R1015	+92504.545	+88230.308	R1018	+92489.079	+88231.458			
R1016	+92506.461	+88246.829	R1019	+92495.149	+88230.883			