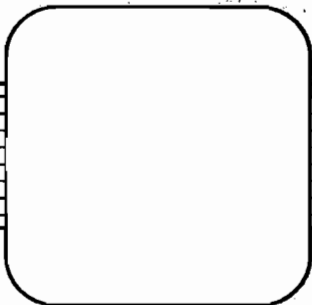


***THE PROVINCE OF
GAUTENG***



***DIE PROVINSIE
GAUTENG***

**Provincial Gazette Extraordinary
Buitengewone Provinsiale Koerant**

Vol. 17

**PRETORIA, 11 OCTOBER 2011
OKTOBER**

No. 236

IMPORTANT NOTICE

The Government Printing Works will not be held responsible for faxed documents not received due to errors on the fax machine or faxes received which are unclear or incomplete. Please be advised that an "OK" slip, received from a fax machine, will not be accepted as proof that documents were received by the GPW for printing. If documents are faxed to the GPW it will be the sender's responsibility to phone and confirm that the documents were received in good order.

Furthermore the Government Printing Works will also not be held responsible for cancellations and amendments which have not been done on original documents received from clients.

CONTENTS • INHOUD

Page *Gazette*
No. *No.*

No.

GENERAL NOTICE

2670	Gauteng Transport Infrastructure Act (8/2001): Proclamation of a portion of Provincial Road K109 between Provincial Roads K54 and K220: District of Pretoria.....	3	236
------	---	---	-----

GENERAL NOTICE

NOTICE 2670 OF 2011

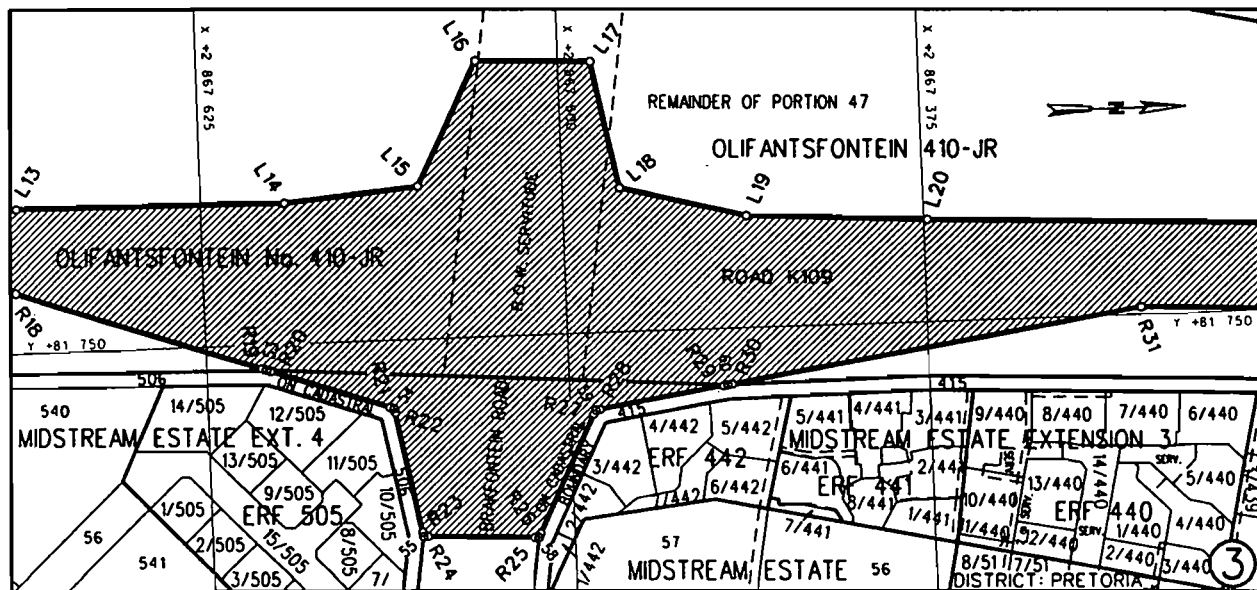
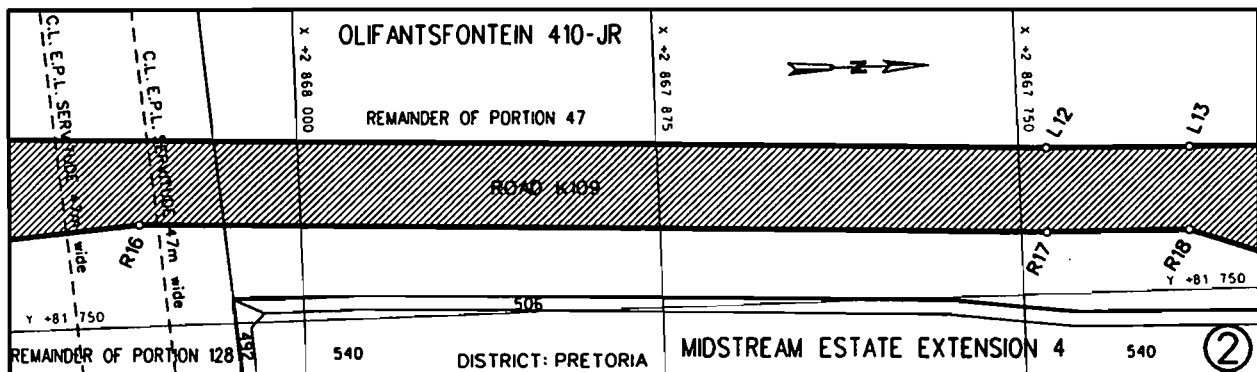
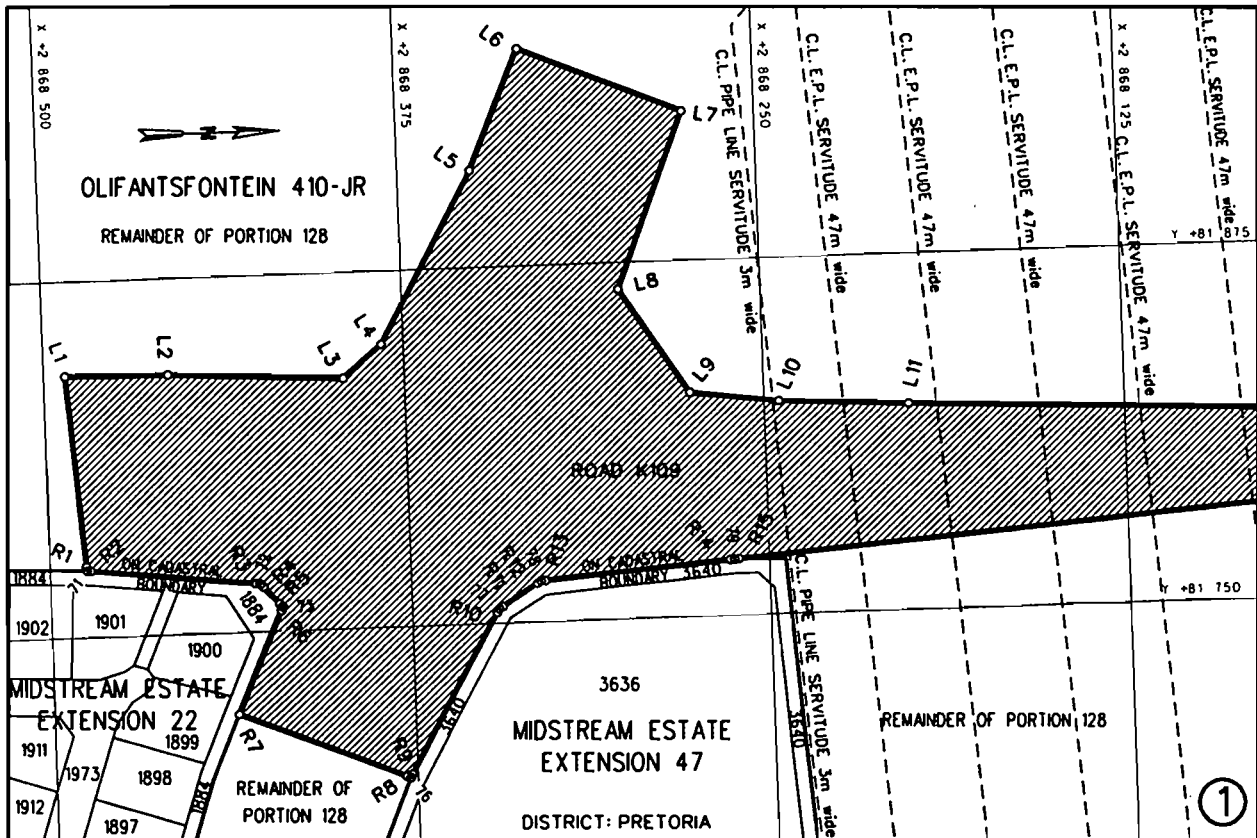
PROCLAMATION OF A PORTION OF PROVINCIAL ROAD K109 BETWEEN PROVINCIAL ROADS K54 AND K220: DISTRICT PRETORIA

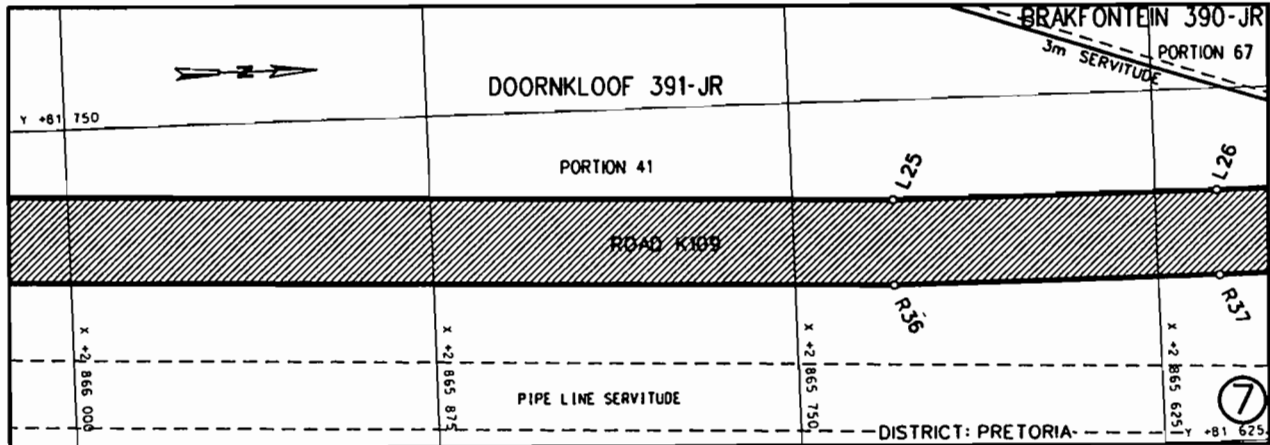
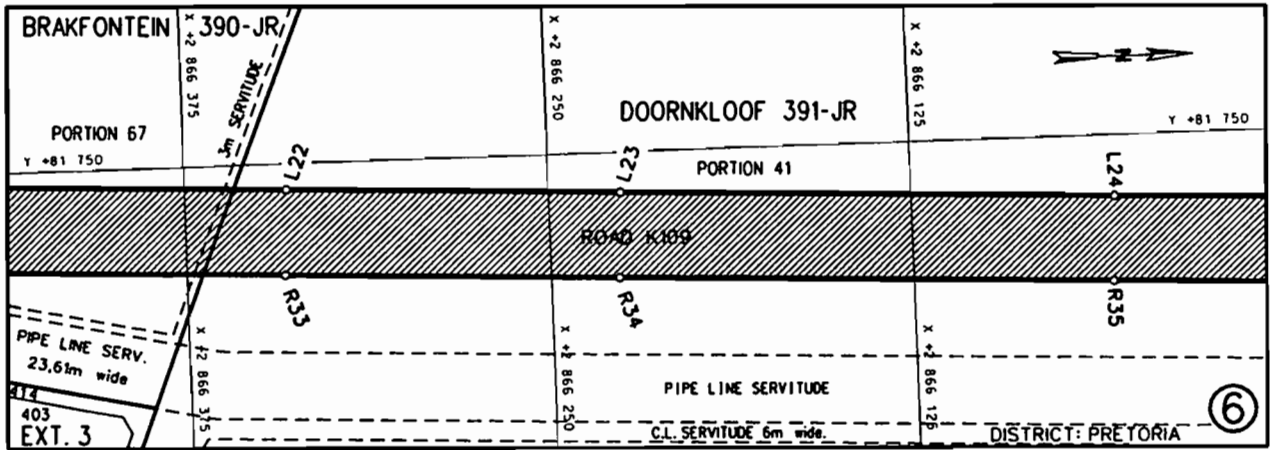
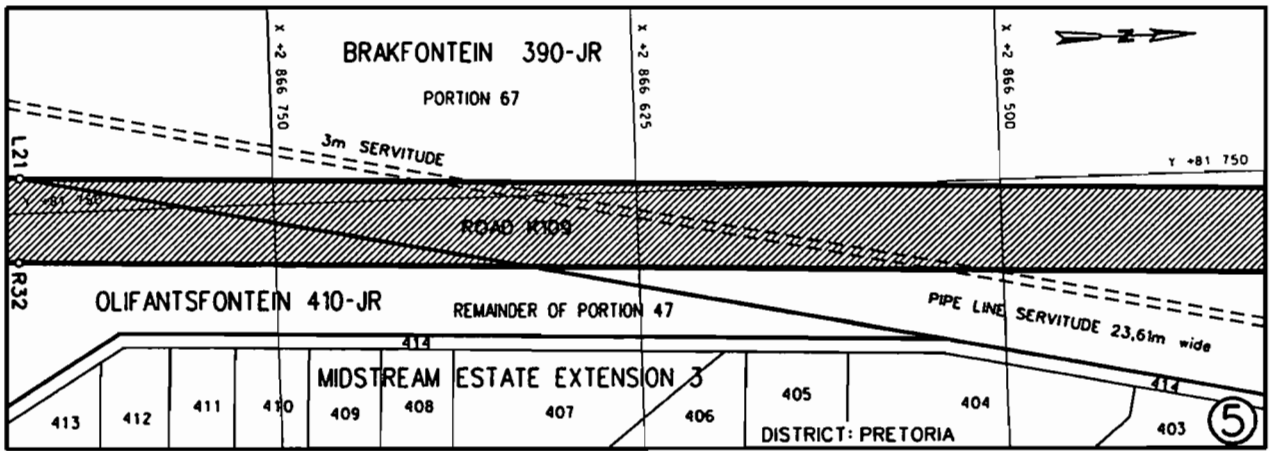
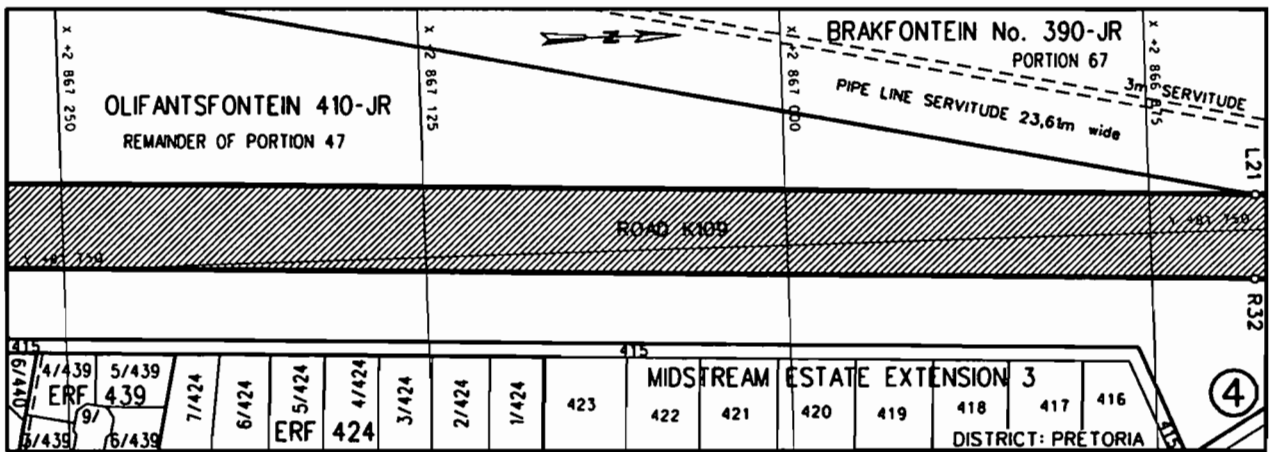
In terms of section 11(1) (b) of the Gauteng Transport Infrastructure Act, 2001 (Act No. 8 of 2001) the MEC for Roads and Transport hereby proclaims that a portion of provincial road K109 with varying widths exists between roads K54 and K220 as indicated on the accompanying sketch plans.

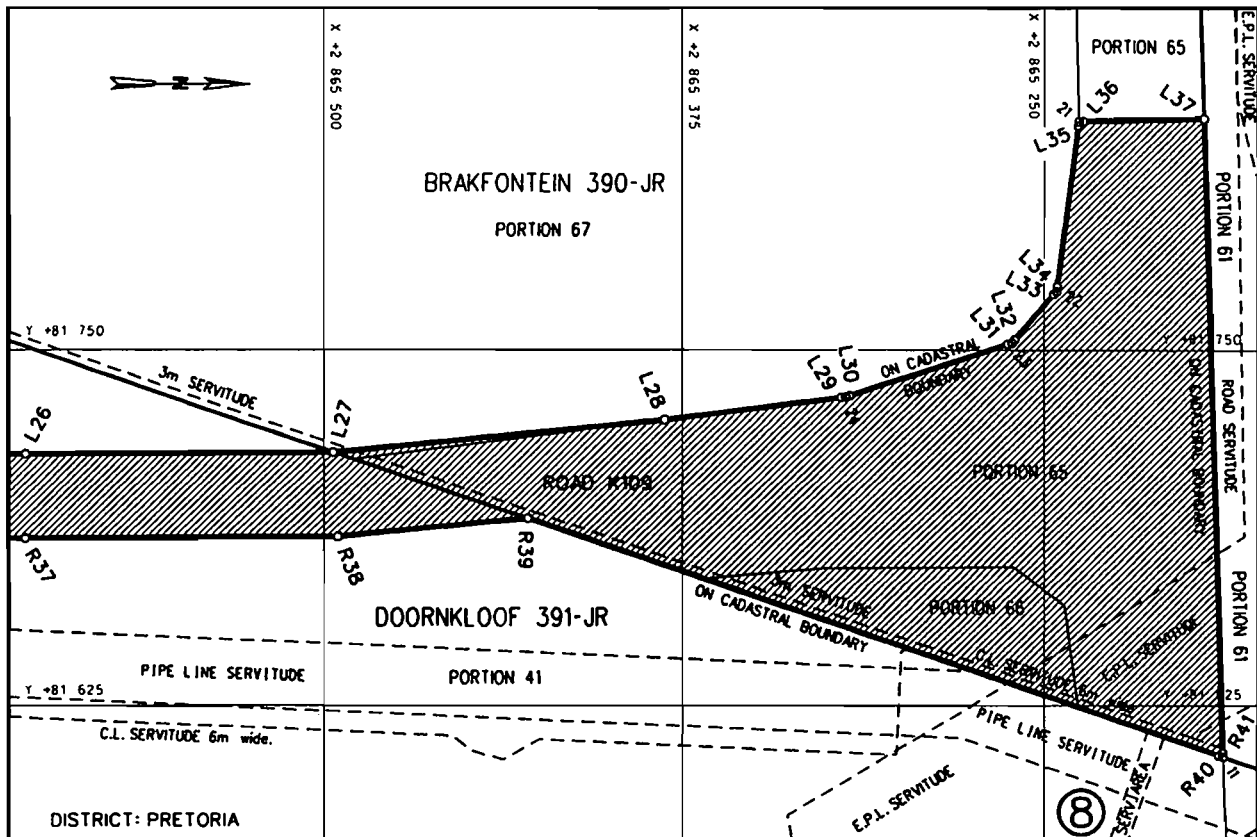
In terms of section 23(6) of the aforementioned act, it is hereby declared that boundary beacons, demarcating the widths of the portion of the road in question have been placed on the land and that plans GRP 11/15/01-02 Exp indicating the land encroached upon by the said road in detail are available for inspection by any interested person in the Plan Room of the Department of Roads and Transport, Sage Life Building, 41 Simmonds Street, Johannesburg.

Reference: 2/1/1/2/3/1-K109

MEC Resolution 022 Dated 27 September 2011

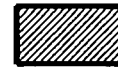






REFERENCE / VERWYSINGS

PROCLAIMED ROAD



THE FIGURE : L1 - L29, 24, L30, L31, 23, L32, L33, 22, L34, L35, 21, L36, L37, R41, 11, R40 - R30, 60, R29, R28, 59, R27, R26, 58, R25, R24, 55, R23, R22, 54, R21, R20, 53, R19 - R15, 79, R14, R13, 78, R12, R11, 77, R10, R9, 76, R8 - R6, 73, R5, R4, 72, R3, R2, 71, R1, L1.

REPRESENTS THE PROCLAMATION OF THE PORTION CONCERNED OF PROVINCIAL ROAD K109 OVER THE REMAINDERS OF PORTIONS 128 AND 47 OF THE FARM OLIFANTSFONTEIN 410-JR, A PORTION OF BRAKFORTEIN ROAD IN MIDSTREAM ESTATE, PORTION 41 OF THE FARM DOORKLOOF 391-JR, PORTIONS 67, 66 AND 65 OF THE FARM BRAKFORTEIN 390-JR AS INTENDED BY THE PUBLICATION THEREOF IN THE PROVINCIAL GAZETTE AND SHOWN IN DETAIL ON PLANS GRP 11/15/01Exp - 02Exp.

FILE NO. 2/1/1/2/3/1-K109

CO-ORDINATE LIST WG 29° CONST. Y= +/- 0.00 X= +2 800 000.00

L1	+81841.608	+68492.338	L34	+81772.214	+65245.404	R29	+81729.791	+67446.122
L2	+81840.945	+68456.281	L35	+81829.420	+65237.903	R30	+81730.255	+67443.158
L3	+81837.614	+68396.281	L36	+81830.940	+65236.208	R31	+81752.636	+67300.147
L4	+81849.014	+68382.636	L37	+81831.887	+65193.564	R32	+81732.502	+66839.455
L5	+81908.933	+68349.547	R1	+81775.097	+68487.166	R33	+81710.736	+66341.320
L6	+81951.194	+68331.696	R2	+81773.435	+68485.559	R34	+81705.711	+66226.325
L7	+81927.264	+68275.036	R3	+81767.050	+68428.389	R35	+81698.284	+66056.305
L8	+81865.448	+68299.396	R4	+81765.751	+68425.914	R36	+81684.509	+65715.949
L9	+81828.278	+68275.466	R5	+81759.679	+68420.637	R37	+81683.786	+65603.637
L10	+81824.335	+68244.865	R6	+81757.165	+68420.237	R38	+81684.236	+65495.299
L11	+81821.997	+68200.254	R7	+81720.779	+68435.609	R39	+81690.765	+65429.156
L12	+81801.894	+67740.215	R8	+81696.850	+68378.951	R40	+81607.269	+65188.367
L13	+81800.684	+67689.619	R9	+81697.577	+68376.839	R41	+81608.277	+65186.994
L14	+81799.506	+67596.271	R10	+81753.810	+68345.538	11	+81606.778	+65186.950
L15	+81803.796	+67550.165	R11	+81755.912	+68343.534	21	+81830.907	+65237.708
L16	+81847.898	+67528.687	R12	+81763.609	+68331.134	22	+81770.727	+65245.599
L17	+81846.144	+67488.528	R13	+81764.515	+68328.364	23	+81752.577	+65261.179
L18	+81800.724	+67479.896	R14	+81769.509	+68263.561	24	+81733.558	+65318.558
L19	+81789.401	+67436.051	R15	+81769.740	+68260.569	53	+81741.020	+67604.630
L20	+81785.879	+67373.721	R16	+81785.638	+68055.370	54	+81725.810	+67561.350
L21	+81762.473	+66838.145						

CO-ORDINATE LIST WG 29° CONST. Y= +/- 0.00 X= +2 800 000.00

L22	+81740.707	+66340.010	R17	+81771.906	+67741.120	55	+81680.410	+67552.850
L23	+81735.682	+66225.015	R18	+81771.071	+67690.913	58	+81678.648	+67512.690
L24	+81728.254	+66054.995	R19	+81741.513	+67606.047	59	+81722.746	+67491.149
L25	+81714.507	+65715.305	R20	+81740.523	+67603.215	60	+81730.023	+67444.640
L26	+81713.785	+65603.603	R21	+81726.307	+67562.765	71	+81773.602	+68487.050
L27	+81714.234	+65496.836	R22	+81724.336	+67561.074	72	+81766.883	+68426.898
L28	+81725.643	+65381.252	R23	+81681.884	+67553.126	73	+81758.547	+68419.653
L29	+81733.370	+65320.046	R24	+81680.344	+67551.351	76	+81696.266	+68377.569
L30	+81734.030	+65317.134	R25	+81678.714	+67514.189	77	+81755.121	+68344.808
L31	+81752.105	+65262.603	R26	+81679.996	+67512.032	78	+81764.400	+68329.860
L32	+81753.715	+65260.202	R27	+81721.398	+67491.807	79	+81769.624	+68262.065
L33	+81769.589	+65246.576	R28	+81722.978	+67489.667			