

*THE PROVINCE OF
GAUTENG*

*DIE PROVINSIE
GAUTENG*

**Provincial Gazette Extraordinary
Buitengewone Provinsiale Koerant**

Vol. 17

**PRETORIA, 21 FEBRUARY 2011
FEBRUARIE**

No. 28

IMPORTANT NOTICE

The Government Printing Works will not be held responsible for faxed documents not received due to errors on the fax machine or faxes received which are unclear or incomplete. Please be advised that an "OK" slip, received from a fax machine, will not be accepted as proof that documents were received by the GPW for printing. If documents are faxed to the GPW it will be the sender's responsibility to phone and confirm that the documents were received in good order.

Furthermore the Government Printing Works will also not be held responsible for cancellations and amendments which have not been done on original documents received from clients.

CONTENTS • INHOUD

<i>No.</i>		<i>Page No.</i>	<i>Gazette No.</i>
GENERAL NOTICES			
472	Gauteng Transport Infrastructure Act (8/2001): Cancellation of a notice in respect of the transfer of a Portion of Provincial Road 2159.....	3	28
473	do.: Closure of a portion of Provincial Road 2159: District Johannesburg.....	4	28
474	do.: Proclamation of an access road in connection with the Gautrain Rapid Rail Link between Pretoria, Johannesburg and the OR Tambo International Airport	6	28

GENERAL NOTICES

NOTICE 472 OF 2011

CANCELLATION OF A NOTICE IN THE PROVINCIAL GAZETTE EXTRAORDINARY IN RESPECT OF THE TRANSFER OF A PORTION OF PROVINCIAL ROAD 2159 TO THE CITY OF JOHANNESBURG METROPOLITAN MUNICIPALITY

In terms of section 13 (2) of the Gauteng Transport Infrastructure Act, 2001 (Act No 8 of 2001) the MEC hereby cancels Notice 844 of 2010 in the Provincial Gazette Extraordinary dated 15 March 2010.

MEC Resolution: 001 dated 28 January 2011

Reference: 2/1/1/2/3/1-2159

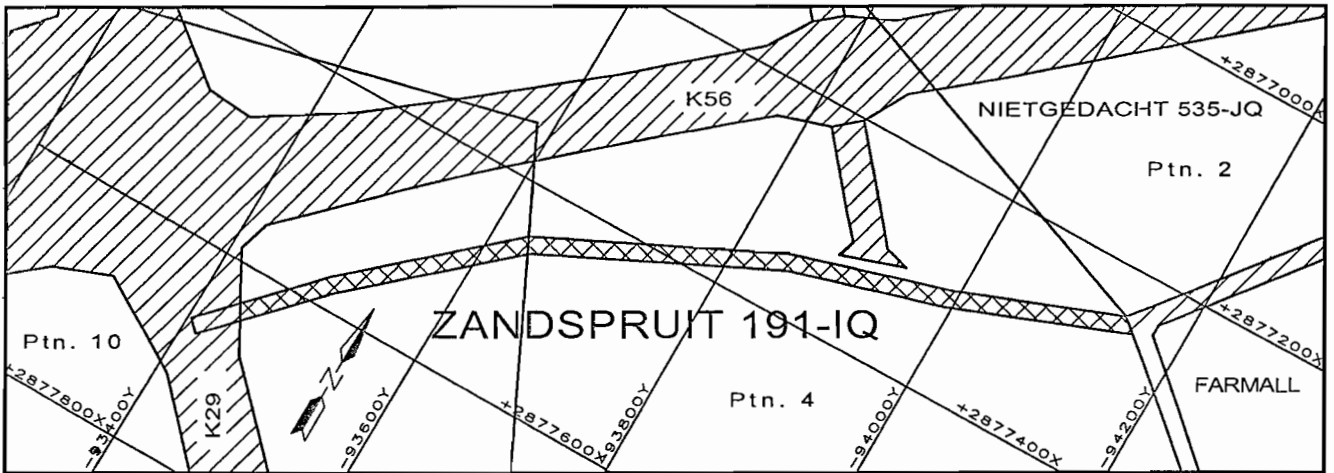
NOTICE 473 OF 2011**CLOSURE OF A PORTION OF PROVINCIAL ROAD 2159: DISTRICT JOHANNESBURG**

In terms of section 38 (5) of the Gauteng Transport Infrastructure Act, 2001 (Act No 8 of 2001) the MEC hereby proclaims the closure of a portion of Provincial Road 2159 on the land as described and indicated by the figure on the accompanying sketch plan.

Boundary beacons, demarcating the aforementioned closure of the road, have been placed on the land concerned and plan PRS 78/42/3V indicating the closure of the road, in detail are available for inspection by any interested person during office hours at the Plan Room of the Department of Roads and Transport, First Floor, South Tower, Sage Life Building, 41 Simmonds Street, Johannesburg.

MEC Resolution: 001 dated 28 January 2011

Reference: 2/1/1/2/3/1-2159



VERWYSING / REFERENCE

PAD GESLUIT
ROAD CLOSED



BESTAANDE PAD
EXISTING ROAD



DIE FIGUUR : 

VERTEENWOORDIG DIE SLUITING VAN N GEDEELTE VAN PROVINSIALE PAD 2159 OOR GEDEELTES 4 EN 10 VAN DIE PLAAS ZANDSPRUIT 191-IQ SOOS BEDOEL BY AFKONDIGING DAARVAN IN DIE PROVINSIALE KOERANT EN IN DETAIL GETOON OP PLAN PRS78/42/3V

THE FIGURE : 

REPRESENTS THE CLOSURE OF A PORTION OF PROVINCIAL ROAD 2159 OVER PORTIONS 4 & 10 OF THE FARM ZANDSPRUIT 191-IQ AS INTENDED BY PUBLICATION THEREOF IN THE PROVINCIAL GAZETTE AND DICTED IN DETAIL ON PLAN PRS78/42/3V

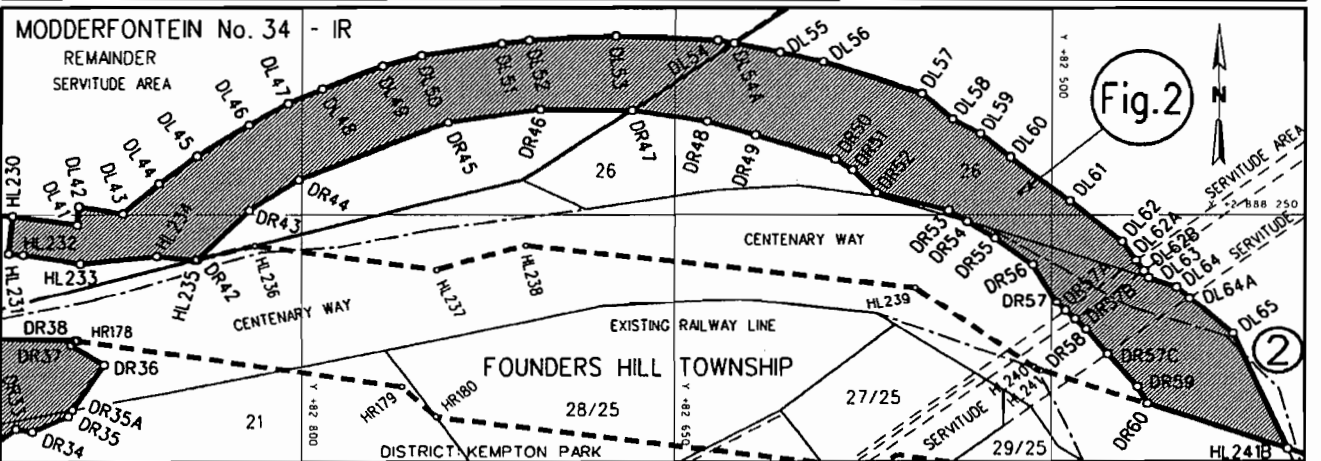
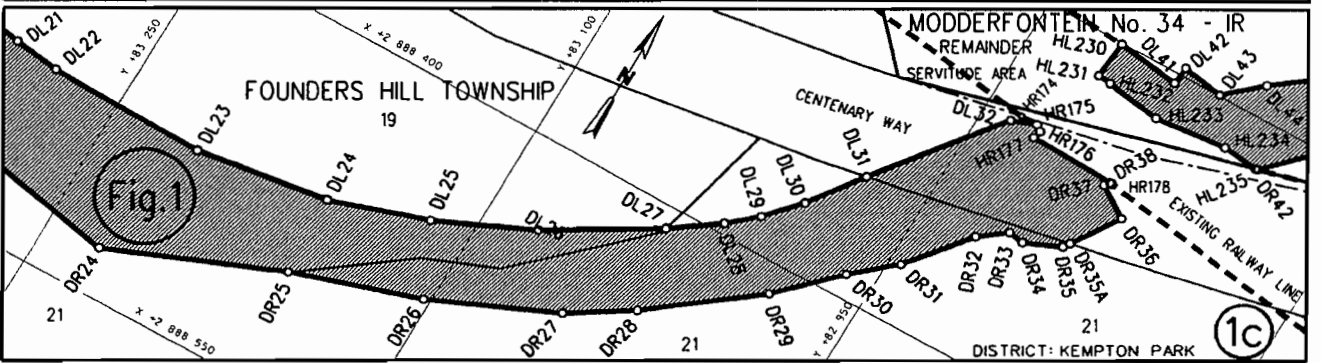
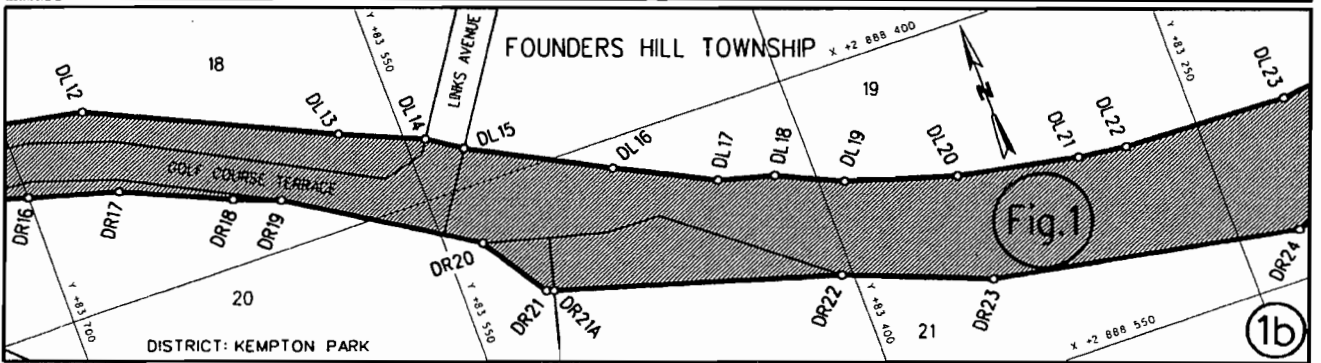
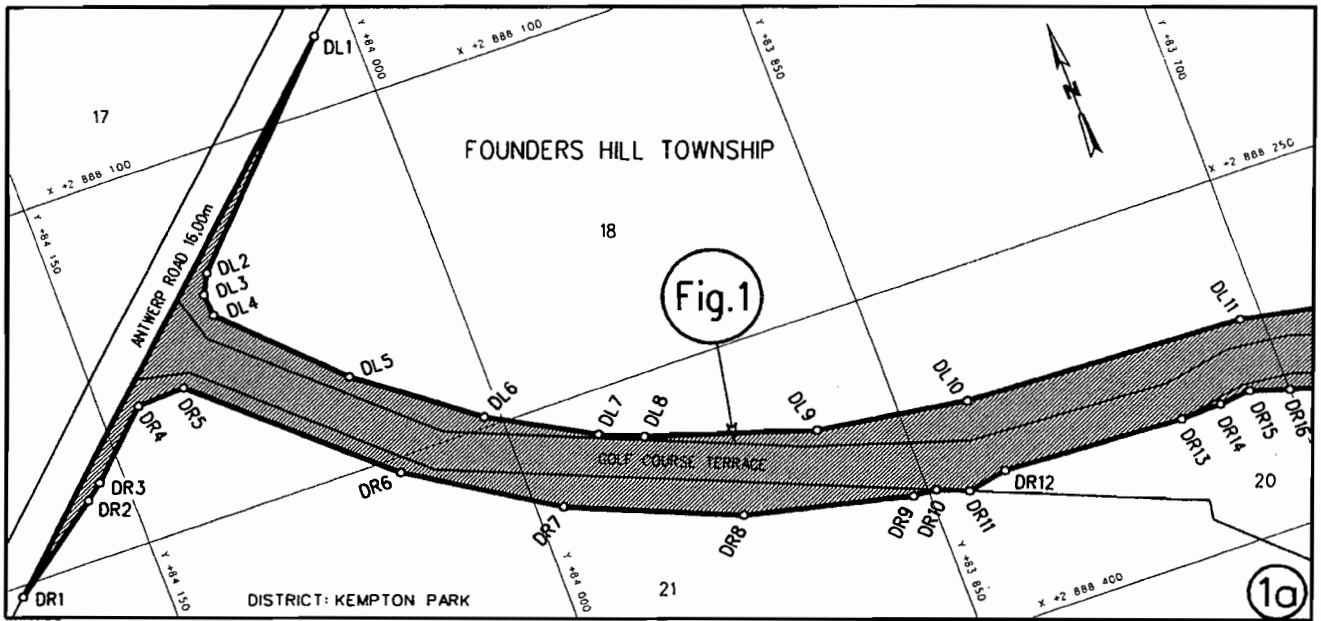
BUNDEL NR. / FILE NO. 2/1/1/2/3/1-2159

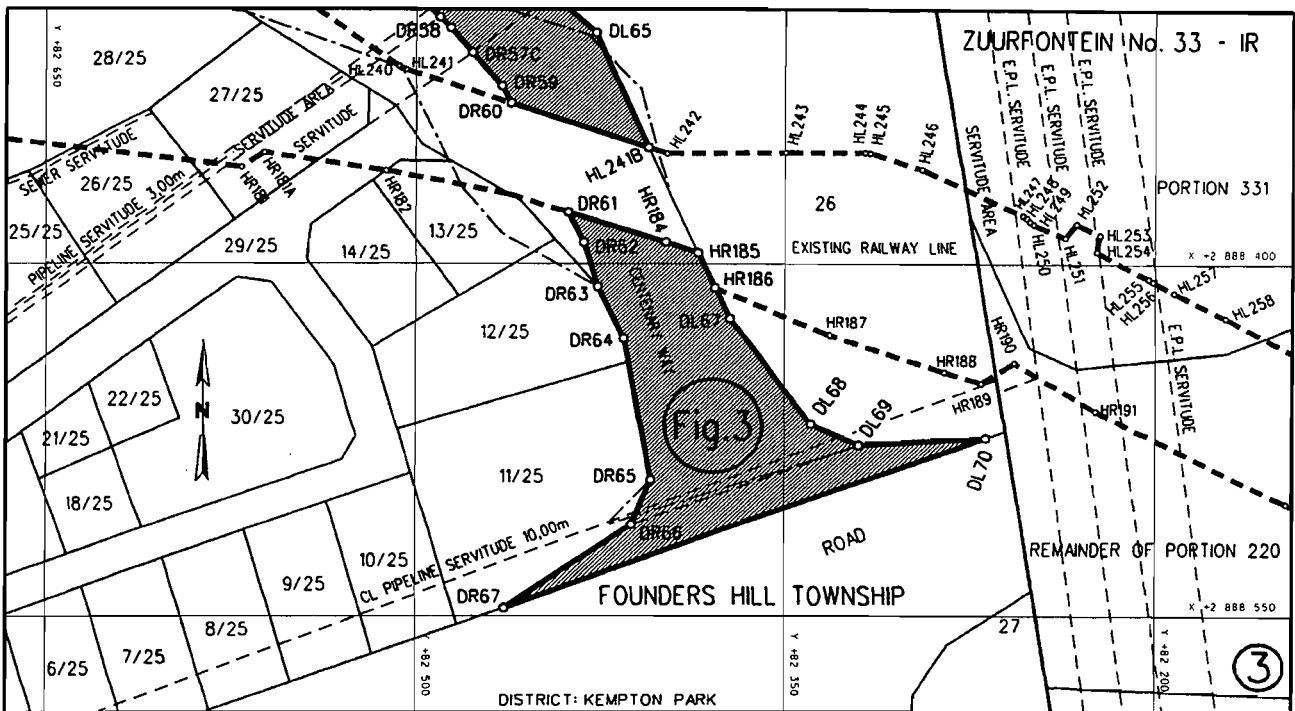
NOTICE 474 OF 2011**PROCLAMATION OF AN ACCESS ROAD IN CONNECTION WITH THE GAUTRAIN RAPID RAIL LINK BETWEEN PRETORIA, JOHANNESBURG AND THE O R TAMBO INTERNATIONAL AIRPORT**

In terms of section 13(1) of the Gauteng Transport Infrastructure Act, 2001 (Act No 8 of 2001) the MEC hereby proclaims that an access road with varying widths exists on the land as described and indicated on the accompanying sketch plans.

In terms of section 23(6) of the aforementioned act it is hereby stated that plans GRP 03/38/14 Exp – 15 Exp which indicate the land affected by the access road in detail, are available for inspection during office hours at the office of the Department of Roads and Transport, First Floor, South Tower, Sage Life Building, 41 Simmonds Street, Johannesburg, during office hours.

Reference: 2/1/7/8 - Gautrain





REFERENCE

PROCLAIMED ACCESS ROAD 

THE FIGURES : (1) DL1 - DL32, HR175 - HR177, DR38 - DR1, DL1.
 (2) HL230, DL41 - DL65, HL241B, DR60 - DR42, HL235 - HL231, HL230.
 (3) HR186, DL67 - DL70, DR67 - DR61, HR184, HR185, HR186.

REPRESENT THE PROCLAMATION OF THE PORTIONS CONCERNED OF THE ACCESS ROAD OVER ERVEN 18, 19, 20, 21, 26, GOLF COURSE TERRACE, A PORTION OF LINKS AVENUE AND PORTIONS OF CENTENARY WAY IN FOUNDERS HILL AND THE REMAINDER OF THE FARM MODDERFONTEIN 34-IR AS INTENDED BY THE PUBLICATION THEREOF IN THE PROVINCIAL GAZETTE AND SHOWN IN DETAIL ON PLANS GRP 03/38/14Exp-15Exp.

FILE NO. 2/1/7/8-GAUTRAIN

CO-ORDINATE LIST WG 29° CONST. Y= +/- 0.00 X= +2 800 000.00

DL1	+84015.189	+88069.784	DL58	+82539.473	+88209.177	DR34	+82907.828	+88343.175
DL2	+84090.258	+88150.323	DL59	+82528.445	+88215.533	DR35	+82893.099	+88336.724
DL3	+84094.494	+88158.664	DL60	+82516.396	+88225.326	DR35A	+82891.351	+88334.051
DL4	+84093.759	+88168.239	DL61	+82492.533	+88243.936	DR36	+82878.565	+88314.491
DL5	+84051.473	+88211.421	DL62	+82471.353	+88261.220	DR37	+82891.917	+88305.697
DL6	+84006.391	+88245.697	DL62A	+82465.911	+88269.531	DR38	+82890.167	+88303.749
DL7	+83965.849	+88268.189	DL62B	+82462.954	+88274.047	DR42	+82841.721	+88269.315
DL8	+83948.549	+88275.384	DL63	+82460.995	+88277.040	DR43	+82820.987	+88248.153
DL9	+83882.866	+88296.367	DL64	+82450.027	+88280.764	DR44	+82801.225	+88234.977
DL10	+83822.832	+88304.997	DL64A	+82444.829	+88285.449	DR45	+82741.348	+88210.771
DL11	+83708.369	+88309.556	DL65	+82427.018	+88301.064	DR46	+82704.382	+88205.104
DL12	+83666.578	+88317.725	DL67	+82371.978	+88423.504	DR47	+82667.257	+88205.505
DL13	+83573.946	+88361.271	DL68	+82339.309	+88468.534	DR48	+82637.053	+88210.182
DL14	+83541.966	+88375.216	DL69	+82320.049	+88477.424	DR49	+82617.909	+88216.107
DL15	+83528.706	+88384.140	DL70	+82268.869	+88474.464	DR50	+82586.134	+88225.998
DL16	+83475.262	+88412.157				DR51	+82579.141	+88230.549
DL17	+83437.237	+88431.410	DR1	+84205.671	+88254.584	DR52	+82569.554	+88240.382
DL18	+83415.226	+88437.330	DR2	+84166.674	+88225.090	DR53	+82540.945	+88248.039
DL19	+83390.169	+88448.980	DR3	+84159.904	+88219.617	DR54	+82533.556	+88252.744
DL20	+83347.123	+88462.135	DR4	+84134.683	+88194.204	DR55	+82522.383	+88259.857
DL21	+83299.061	+88471.003	DR5	+84115.380	+88193.219	DR56	+82507.292	+88271.465
DL22	+83279.413	+88473.512	DR6	+84045.752	+88256.384	DR57	+82497.825	+88287.466
DL23	+83213.110	+88475.047	DR7	+83989.209	+88292.146	DR57A	+82494.268	+88290.972
DL24	+83157.853	+88466.921	DR8	+83922.396	+88320.118	DR57B	+82490.485	+88294.701
DL25	+83117.277	+88453.722	DR9	+83856.127	+88335.472	DR57C	+82477.157	+88309.702
DL26	+83077.942	+88435.486	DR10	+83846.740	+88336.040	DR58	+82485.977	+88299.144
DL27	+83033.671	+88409.167	DR11	+83834.568	+88341.038	DR59	+82465.165	+88324.057
DL28	+83014.600	+88395.702	DR12	+83818.445	+88337.626	DR60	+82461.411	+88331.590

CO-ORDINATE LIST WG 29° CONST. Y= +/- 0.00 X= +2 800 000.00

DL29	+83003.378	+88385.736	DR13	+83744.851	+88341.249	DR61	+82438.112	+88378.337
DL30	+82991.367	+88371.920	DR14	+83727.928	+88340.762	DR62	+82431.792	+88391.018
DL31	+82975.610	+88350.345	DR15	+83715.031	+88339.380	DR63	+82426.208	+88409.814
DL32	+82938.120	+88301.118	DR16	+83699.935	+88344.253	DR64	+82415.478	+88432.004
DL41	+82889.475	+88254.289	DR17	+83664.206	+88354.556	DR65	+82404.249	+88492.103
DL42	+82888.777	+88246.656	DR18	+83622.857	+88372.913	DR66	+82412.249	+88511.603
DL43	+82870.997	+88249.536	DR19	+83605.020	+88379.710	DR67	+82463.887	+88546.613
DL44	+82856.779	+88236.664	DR20	+83534.975	+88424.368			
DL45	+82841.800	+88225.104	DR21	+83517.858	+88451.871	HL230	+82915.861	+88250.537
DL46	+82821.068	+88212.051	DR21 A	+83514.888	+88452.758	HL231	+82917.436	+88266.751
DL47	+82805.466	+88202.660	DR22	+83404.277	+88485.812	HL232	+82911.619	+88267.243
DL48	+82791.953	+88196.623	DR23	+83348.188	+88507.737	HL233	+82888.150	+88271.063
DL49	+82767.607	+88187.291	DR24	+83226.058	+88529.805	HL234	+82857.717	+88267.905
DL50	+82752.143	+88182.874	DR25	+83155.695	+88501.038	HL235	+82842.526	+88269.530
DL51	+82719.895	+88177.791	DR26	+83102.771	+88484.277	HL241B	+82405.328	+88350.879
DL52	+82708.956	+88176.424	DR27	+83051.523	+88461.337			
DL53	+82673.899	+88174.490	DR28	+83025.908	+88445.139	HR175	+82928.071	+88297.309
DL54	+82632.979	+88176.320	DR29	+82983.957	+88412.572	HR176	+82925.564	+88299.354
DL54A	+82626.554	+88177.584	DR30	+82961.650	+88389.915	HR177	+82926.338	+88302.818
DL55	+82608.222	+88181.191	DR31	+82945.073	+88375.287	HR184	+82398.296	+88390.846
DL56	+82591.111	+88185.196	DR32	+82925.404	+88350.472	HR185	+82385.115	+88395.451
DL57	+82551.693	+88198.257	DR33	+82914.495	+88342.050	HR186	+82378.131	+88410.365