

*THE PROVINCE OF
GAUTENG*

*DIE PROVINSIE
GAUTENG*

**Provincial Gazette Extraordinary
Buitengewone Provinsiale Koerant**

Vol. 17

PRETORIA, 4 APRIL 2011

No. 61

IMPORTANT NOTICE

The Government Printing Works will not be held responsible for faxed documents not received due to errors on the fax machine or faxes received which are unclear or incomplete. Please be advised that an "OK" slip, received from a fax machine, will not be accepted as proof that documents were received by the GPW for printing. If documents are faxed to the GPW it will be the sender's responsibility to phone and confirm that the documents were received in good order.

Furthermore the Government Printing Works will also not be held responsible for cancellations and amendments which have not been done on original documents received from clients.

CONTENTS • INHOUD

<i>No.</i>		<i>Page No.</i>	<i>Gazette No.</i>
GENERAL NOTICES			
993	Gauteng Transport Infrastructure Act (8/2001): Transfer of a portion of Provincial Road 2375 to the Westonaria Local Authority	3	61
994	do.: Proclamation of a provincial railway line in connection with the Gautrain Rapid Rail Link between Pretoria, Johannesburg and the OR Tambo International Airport	5	61
995	do.: do	7	61
996	do.: do	9	61
997	do.: do	11	61
998	do.: do	13	61
999	do.: do	15	61
1000	do.: do	17	61

GENERAL NOTICES

NOTICE 993 OF 2011

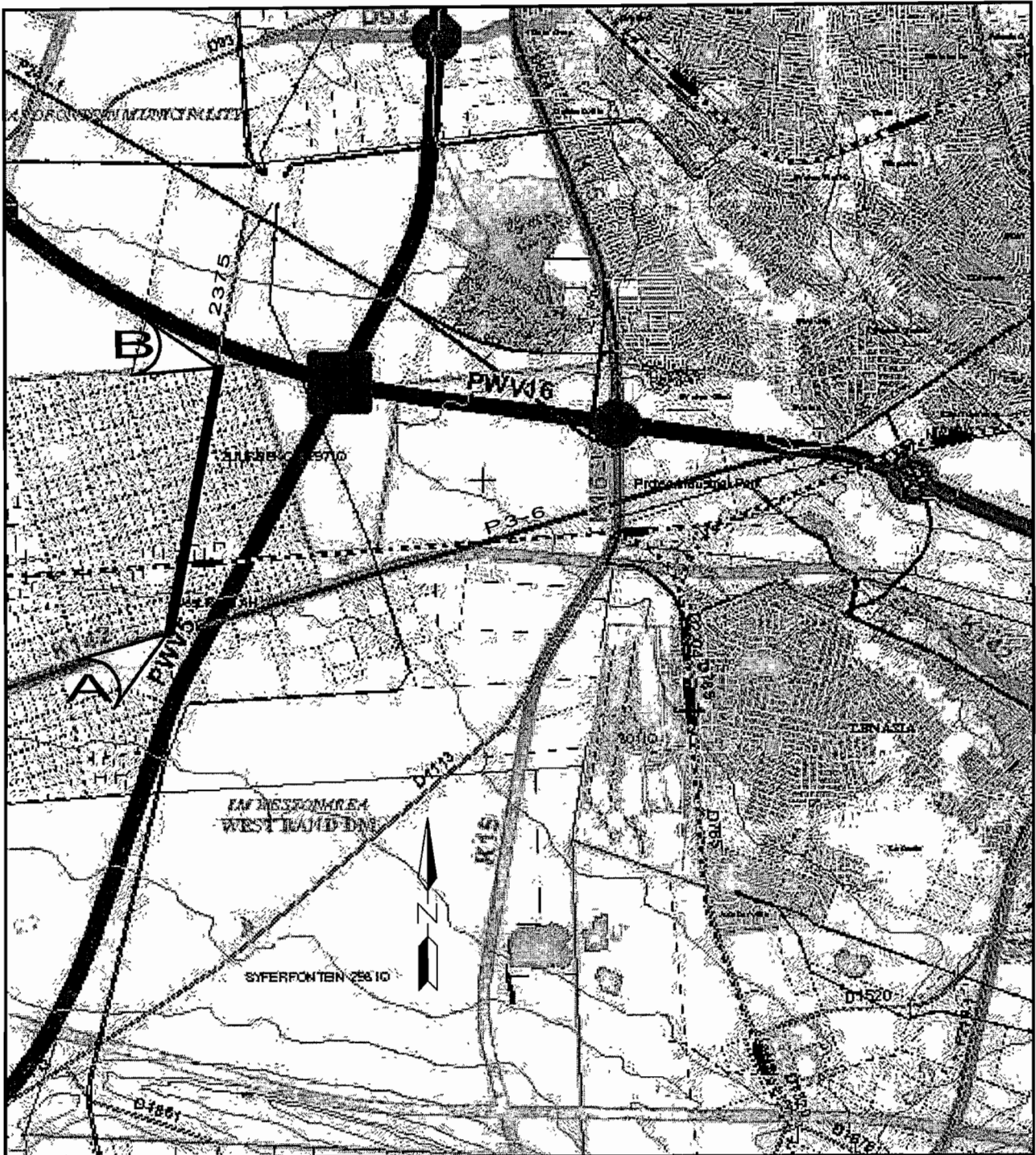
TRANSFER OF A PORTION OF PROVINCIAL ROAD 2375 TO THE WESTONAREA LOCAL AUTHORITY

In terms of section 51(2) (a) of the Gauteng Transport Infrastructure Act, 2001 (Act No. 8 of 2001) it is hereby notified for general information that the MEC has concluded an agreement with the Westonaria Local Authority, whereby the said Local Authority takes over all responsibility for a portion of Provincial Road 2375 as depicted on the accompanying sketch plan, and that the said portion of the road is no longer a portion of Provincial Road 2375 for the purposes of the aforementioned act from the date of this notice.

The portion of the provincial road in question is depicted in detail on plan PRS 89/112/ Bp which is available for inspection by any interested person at the office of the Department of Roads and Transport, Sage Life Building, First Floor, South Tower, Sage Life Building, 41 Simmonds Street, Johannesburg, during office hours.

MEC Resolution: 015 of 21 August 2009

Reference: 2/1/1/2/3/1-2375



REFERENCE

TAKING OVER OF ROAD



THE LINE : A - B

REPRESENTS THE TAKING OVER OF PROVINCIAL ROAD 2375 FROM ROAD P3-6(K142) TO WESTONARIA / JOHANNESBURG MUNICIPAL BOUNDARY AS CONTEMPLATED BY THE PUBLICATION THEREOF IN THE PROVINCIAL GAZETTE

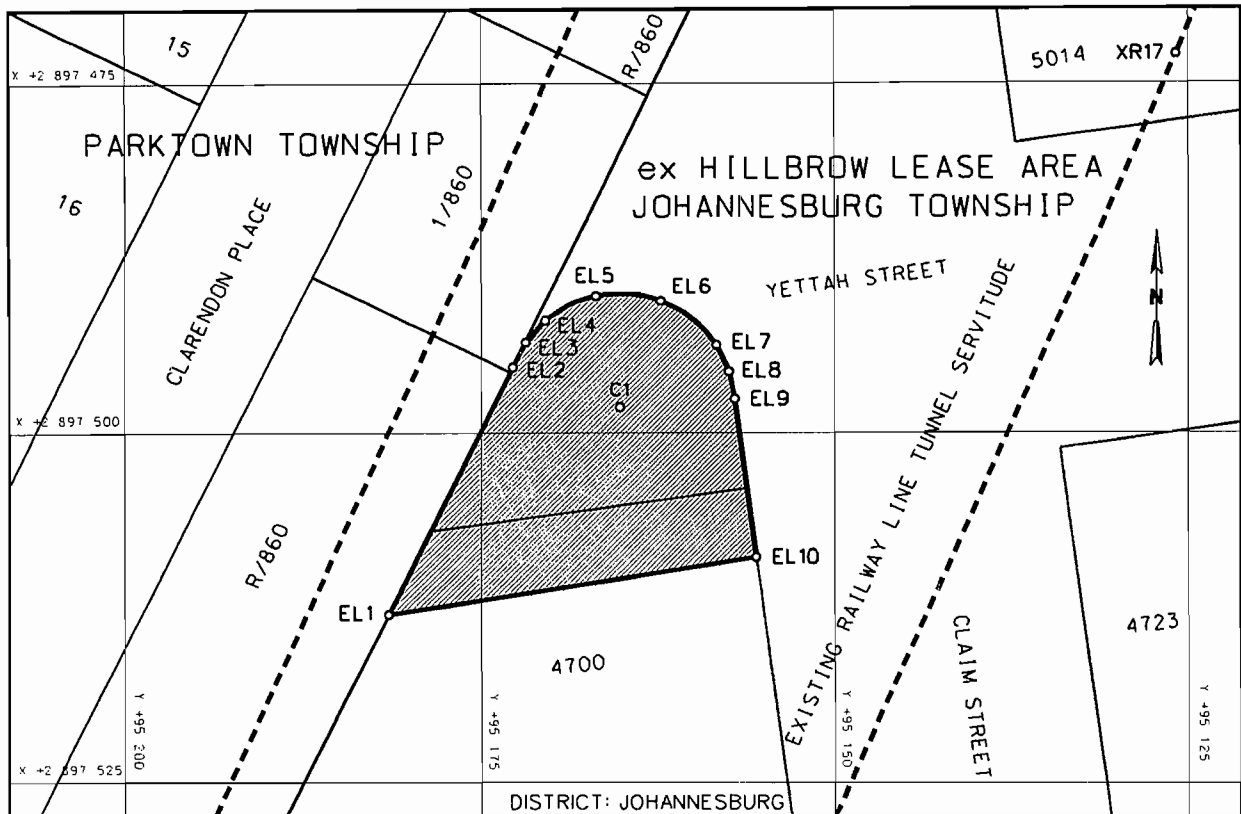
FILE NO. 2/1/1/2/3/1-2375

NOTICE 994 OF 2011**PROCLAMATION OF A PROVINCIAL RAILWAY LINE IN CONNECTION WITH THE GAUTRAIN RAPID RAIL LINK BETWEEN PRETORIA, JOHANNESBURG AND THE O R TAMBO INTERNATIONAL AIRPORT**

In terms of section 11(1)(b) of the Gauteng Transport Infrastructure Act, 2001 (Act No. 8 of 2001) the MEC hereby proclaims that a provincial railway line with varying widths exists on the land as described and indicated by the figure on the accompanying sketch plan.

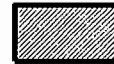
In terms of section 23(6) of the aforementioned act it is hereby stated that plan GRP 03/38/01 Exp which indicates the land encroached upon by the railway line in detail, is available for inspection at the office of the Department of Roads and Transport, First Floor, South Tower, Sage Life Building, 41 Simmonds Street, Johannesburg.

Reference: 2/1/7/8 - Gautrain



REFERENCE / VERWYSINGS

PROCLAIMED RAILWAY LINE (SHAFT E1)



THE FIGURE : EL1 - EL4, CURVE, EL5, CURVE, EL6, CURVE, EL7 - EL10, EL1.

REPRESENTS THE PROCLAMATION OF THE PORTION CONCERNED OF THE RAILWAY LINE (SHAFT E1) OVER ERF 4700 AND A PORTION OF YETTAH STREET IN HILLBROW (JOHANNESBURG) AS INTENDED BY THE PUBLICATION THEREOF IN THE PROVINCIAL GAZETTE AND SHOWN IN DETAIL ON PLAN GRP 03/38/01Exp.

FILE NO. 2/1/7/8-GAUTRAIN

CO-ORDINATE LIST WG 29° CONST. Y= +/- 0.00 X= +2 800 000.00

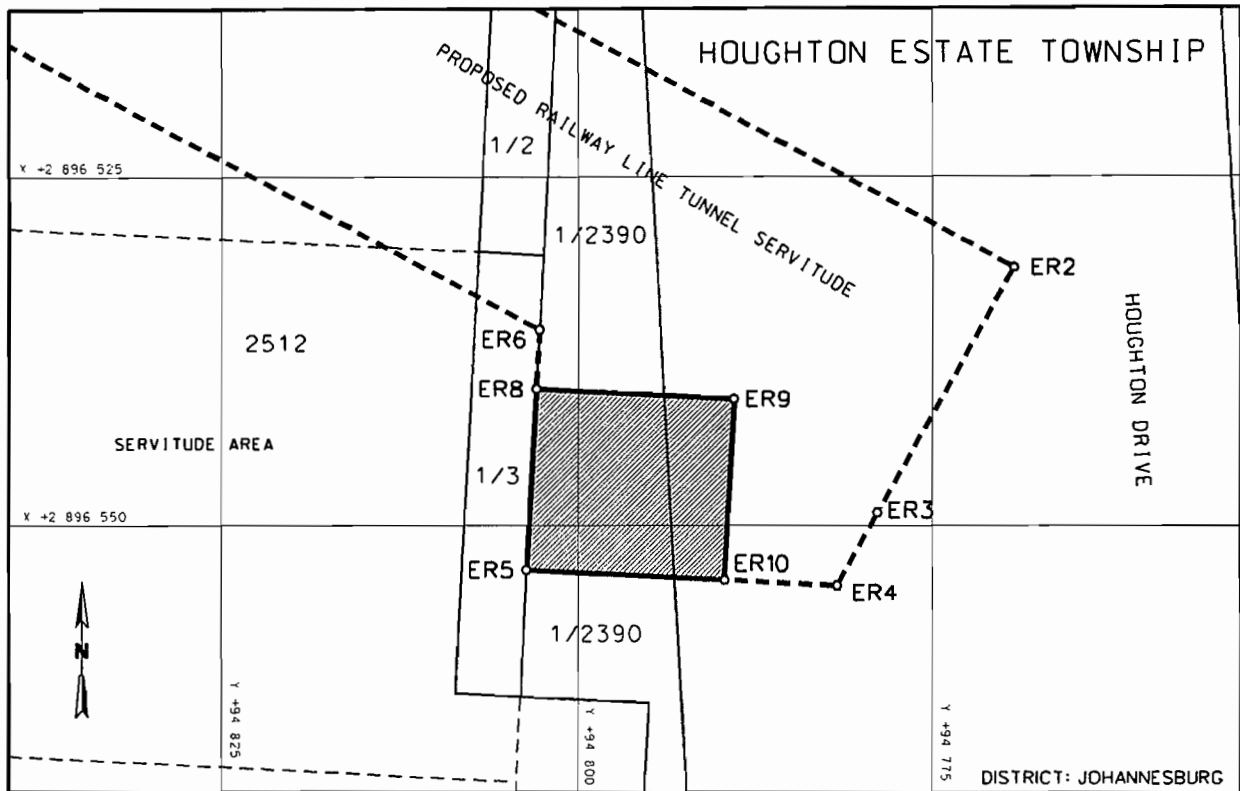
EL1	+95181.498	+97512.970	EL5	+95166.873	+97490.206	EL9	+95156.999	+97497.588
EL2	+95172.784	+97495.317	EL6	+95162.237	+97490.563	EL10	+95155.488	+97508.855
EL3	+95171.867	+97493.538	EL7	+95158.299	+97493.756	C1	+95165.156	+97498.188
EL4	+95170.478	+97491.996	EL8	+95157.402	+97495.628	RADIUS = 8.165m		

NOTICE 995 OF 2011**PROCLAMATION OF A PROVINCIAL RAILWAY LINE IN CONNECTION WITH THE GAUTRAIN RAPID RAIL LINK BETWEEN PRETORIA, JOHANNESBURG AND THE O R TAMBO INTERNATIONAL AIRPORT**

In terms of section 11(1)(b) of the Gauteng Transport Infrastructure Act, 2001 (Act No. 8 of 2001) the MEC hereby proclaims that a provincial railway line with varying widths exists on the land as described and indicated by the figure on the accompanying sketch plan.

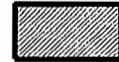
In terms of section 23(6) of the aforementioned act it is hereby stated that plan GRP 03/38/02 Exp which indicates the land encroached upon by the railway line in detail, is available for inspection at the office of the Department of Roads and Transport, First Floor, South Tower, Sage Life Building, 41 Simmonds Street, Johannesburg.

Reference: 2/1/7/8 - Gautrain



REFERENCE / VERWYSINGS

PROCLAIMED RAILWAY LINE (SHAFT E2)



THE FIGURE : ER5, ER8, ER9, ER10, ER5.

REPRESENTS THE PROCLAMATION OF THE RAILWAY LINE (SHAFT E2) OVER PORTION 1 OF ERF 2390 AND A PORTION OF HOUGHTON DRIVE IN HOUGHTON ESTATE AS INTENDED BY THE PUBLICATION THEREOF IN THE PROVINCIAL GAZETTE AND SHOWN IN DETAIL ON PLAN GRP 03/38/02Exp.

FILE NO. 2/1/7/8-GAUTRAIN

CO-ORDINATE LIST WG 29° CONST. Y= +/- 0.00 X= +2 800 000.00

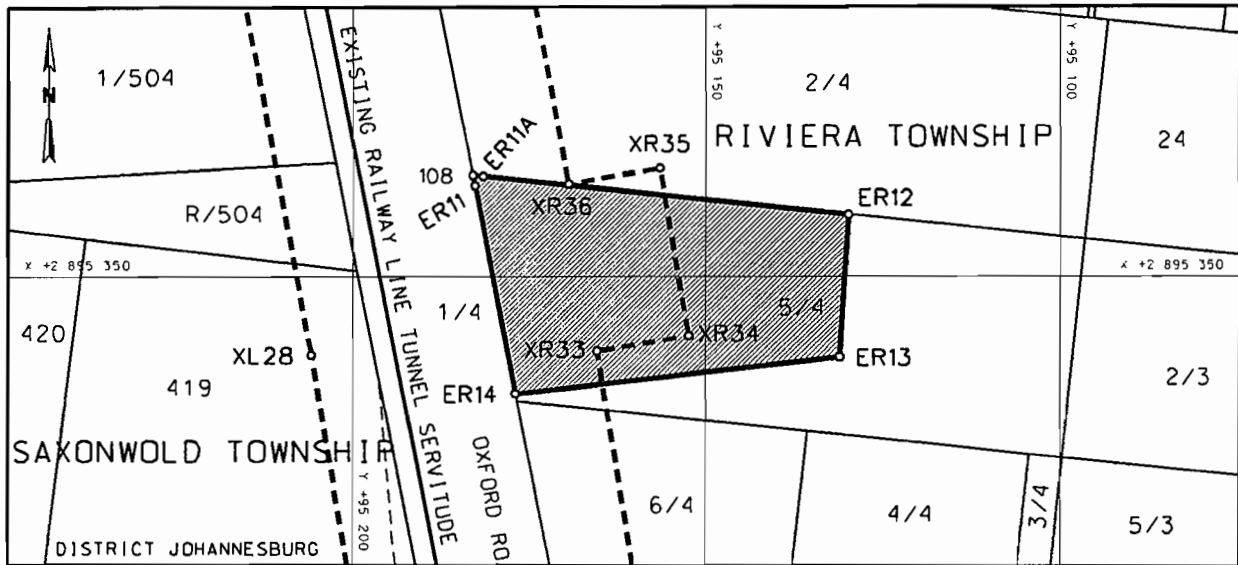
ER5	+94803.636	+96553.188	ER9	+94788.903	+96540.925
ER8	+94802.972	+96540.205	ER10	+94789.567	+96553.908

NOTICE 996 OF 2011**PROCLAMATION OF A PROVINCIAL RAILWAY LINE IN CONNECTION WITH THE GAUTRAIN RAPID RAIL LINK BETWEEN PRETORIA, JOHANNESBURG AND THE O R TAMBO INTERNATIONAL AIRPORT**

In terms of section 11(1)(b) of the Gauteng Transport Infrastructure Act, 2001 (Act No. 8 of 2001) the MEC hereby proclaims that a provincial railway line with varying widths exists on the land as described and indicated by the figure on the accompanying sketch plan.

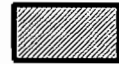
In terms of section 23(6) of the aforementioned act it is hereby stated that plan GRP 03/38/03 Exp which indicates the land encroached upon by the railway line in detail, is available for inspection at the office of the Department of Roads and Transport, First Floor, South Tower, Sage Life Building, 41 Simmonds Street, Johannesburg.

Reference: 2/1/7/8 - Gautrain



REFERENCE / VERWYSINGS

PROCLAIMED RAILWAY LINE (SHAFT E3)



THE FIGURE : ER11, 108, ER11A, ER12, ER13, ER14, ER11.

REPRESENTS THE PROCLAMATION OF THE PORTION CONCERNED OF THE RAILWAY LINE (SHAFT E3) OVER PORTION 5 OF ERF 4 IN RIVIERA AS INTENDED BY THE PUBLICATION THEREOF IN THE PROVINCIAL GAZETTE AND SHOWN IN DETAIL ON PLAN GRP 03/38/03Exp.

FILE NO. 2/11/7/8-GAUTRAIN

CO-ORDINATE LIST WG 29° CONST. Y= +/- 0.00 X= +2 800 000.00

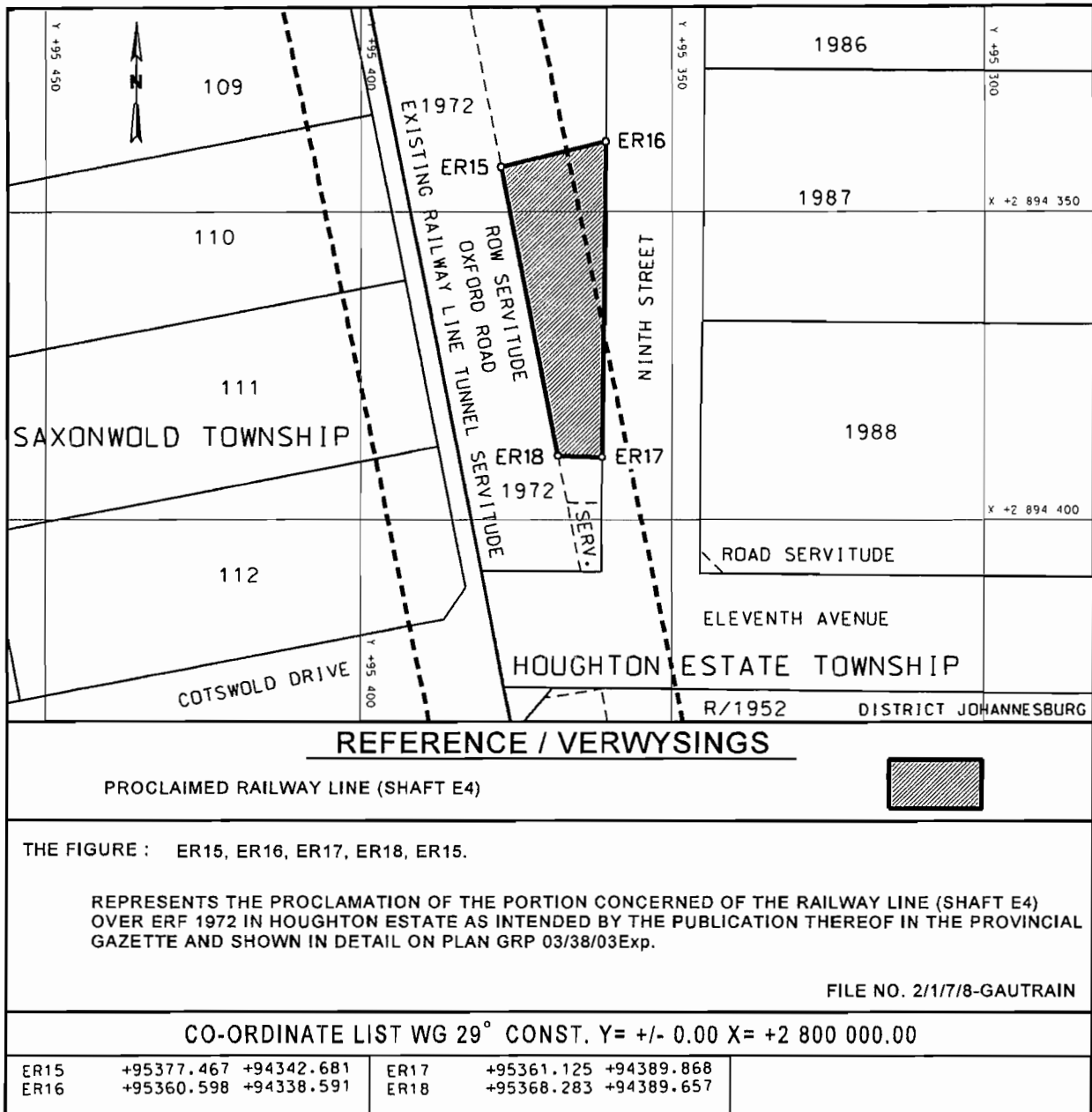
ER11	+95182.829	+95337.055	ER12	+95129.897	+95341.167	ER14	+95177.001	+95366.857
ER11A	+95181.625	+95335.740	ER13	+95131.119	+95361.521	108	+95183.117	+95335.583

NOTICE 997 OF 2011**PROCLAMATION OF A PROVINCIAL RAILWAY LINE IN CONNECTION WITH THE GAUTRAIN RAPID RAIL LINK BETWEEN PRETORIA, JOHANNESBURG AND THE O R TAMBO INTERNATIONAL AIRPORT**

In terms of section 11(1)(b) of the Gauteng Transport Infrastructure Act, 2001 (Act No. 8 of 2001) the MEC hereby proclaims that a provincial railway line with varying widths exists on the land as described and indicated by the figure on the accompanying sketch plan.

In terms of section 23(6) of the aforementioned act it is hereby stated that plan GRP 03/38/03 Exp which indicates the land encroached upon by the railway line in detail, is available for inspection at the office of the Department of Roads and Transport, First Floor, South Tower, Sage Life Building, 41 Simmonds Street, Johannesburg.

Reference: 2/1/7/8 - Gautrain

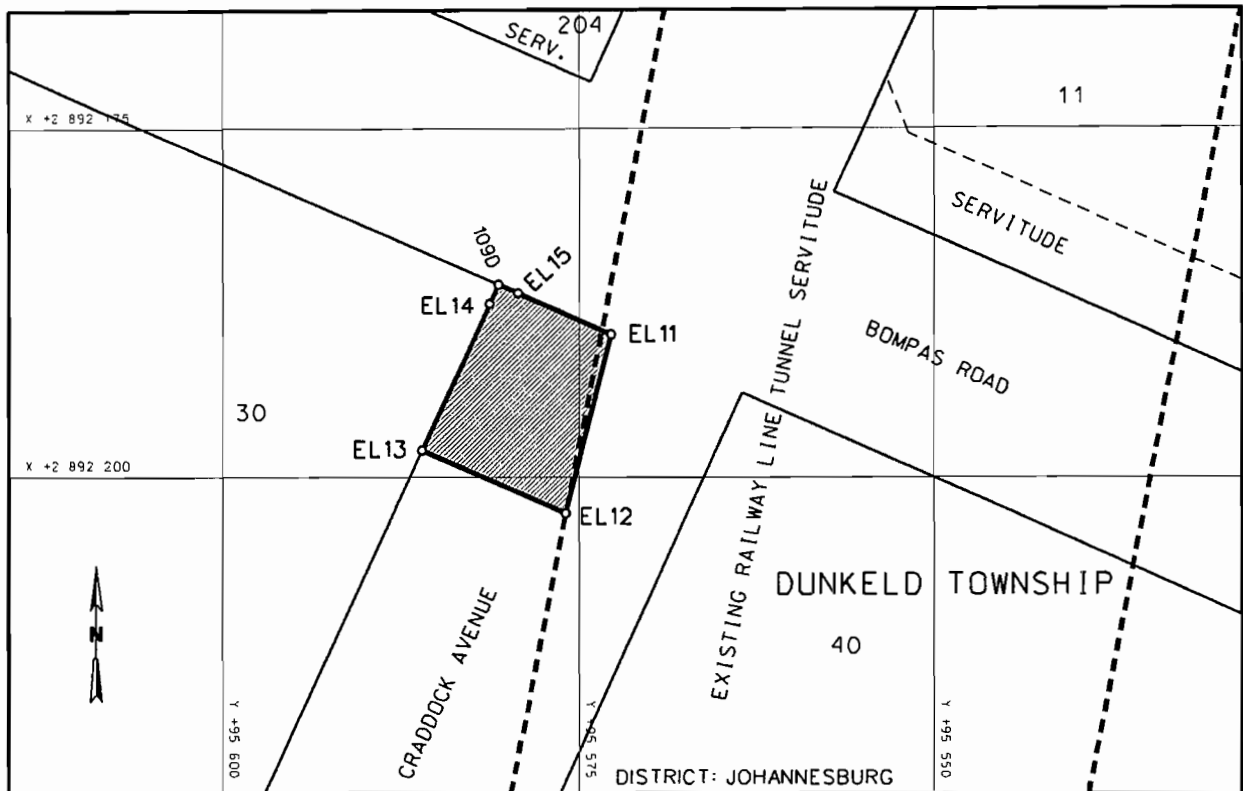


NOTICE 998 OF 2011**PROCLAMATION OF A PROVINCIAL RAILWAY LINE IN CONNECTION WITH THE GAUTRAIN RAPID RAIL LINK BETWEEN PRETORIA, JOHANNESBURG AND THE O R TAMBO INTERNATIONAL AIRPORT**

In terms of section 11(1)(b) of the Gauteng Transport Infrastructure Act, 2001 (Act No. 8 of 2001) the MEC hereby proclaims that a provincial railway line with varying widths exists on the land as described and indicated by the figure on the accompanying sketch plan.

In terms of section 23(6) of the aforementioned act it is hereby stated that plan GRP 03/38/04 Exp which indicates the land encroached upon by the railway line in detail, is available for inspection at the office of the Department of Roads and Transport, First Floor, South Tower, Sage Life Building, 41 Simmonds Street, Johannesburg.

Reference: 2/1/7/8 - Gautrain



REFERENCE / VERWYSINGS

PROCLAIMED RAILWAY LINE (SHAFT E5)



THE FIGURE : EL11 - EL14, 109D, EL15, EL11.

REPRESENTS THE PROCLAMATION OF THE PORTION CONCERNED OF THE RAILWAY LINE (SHAFT E5) OVER A PORTION OF CRADDOCK AVENUE IN DUNKELD AS INTENDED BY THE PUBLICATION THEREOF IN THE PROVINCIAL GAZETTE AND SHOWN IN DETAIL ON PLAN GRP 03/38/04Exp.

FILE NO. 2/1/7/8-GAUTRAIN

CO-ORDINATE LIST WG 29° CONST. Y= +/- 0.00 X= +2 800 000.00

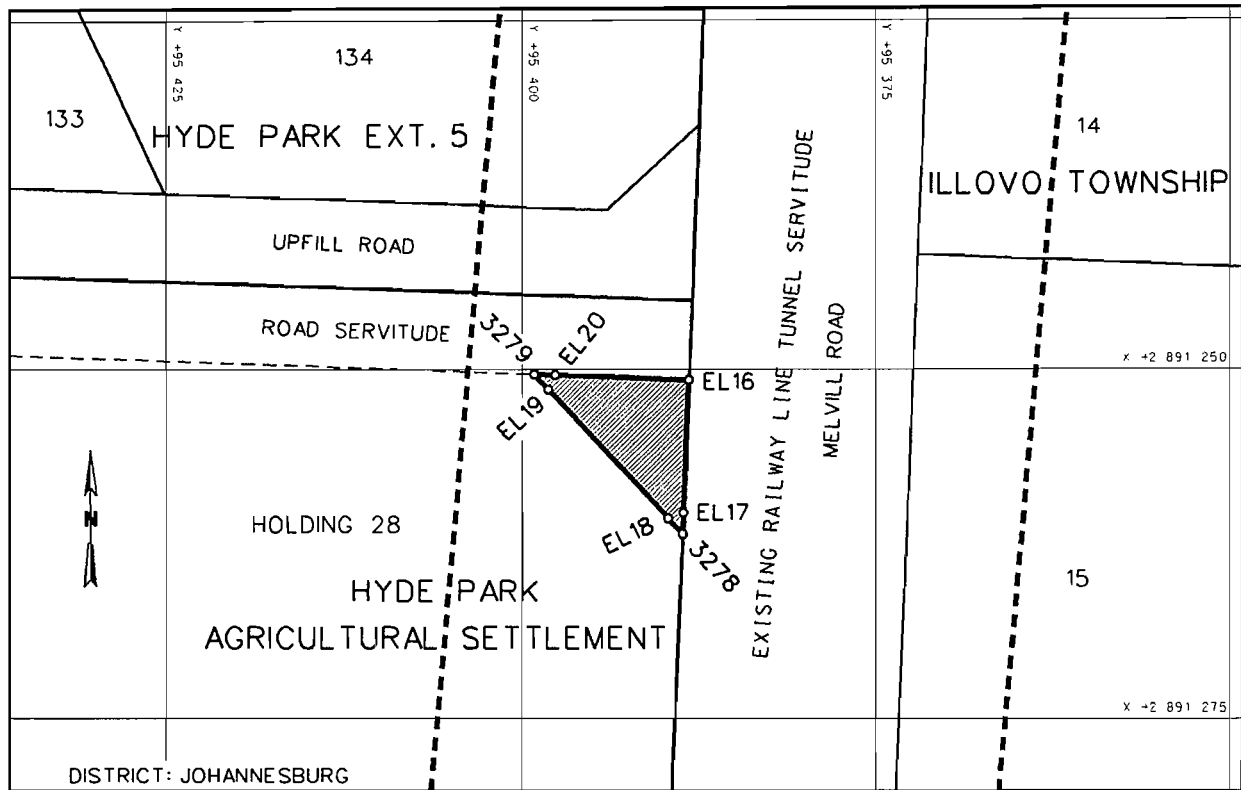
EL 11	+95572.723	+92189.802	EL 13	+95585.999	+92198.089	EL 15	+95579.304	+92186.846
EL 12	+95575.909	+92202.622	EL 14	+95581.287	+92187.600	109D	+95580.672	+92186.231

NOTICE 999 OF 2011**PROCLAMATION OF A PROVINCIAL RAILWAY LINE IN CONNECTION WITH THE GAUTRAIN RAPID RAIL LINK BETWEEN PRETORIA, JOHANNESBURG AND THE O R TAMBO INTERNATIONAL AIRPORT**

In terms of section 11(1)(b) of the Gauteng Transport Infrastructure Act, 2001 (Act No. 8 of 2001) the MEC hereby proclaims that a provincial railway line with varying widths exists on the land as described and indicated by the figure on the accompanying sketch plan.

In terms of section 23(6) of the aforementioned act it is hereby stated that plan GRP 03/38/05 Exp which indicates the land encroached upon by the railway line in detail, is available for inspection at the office of the Department of Roads and Transport, First Floor, South Tower, Sage Life Building, 41 Simmonds Street, Johannesburg.

Reference: 2/1/7/8 - Gautrain



REFERENCE / VERWYSINGS

PROCLAIMED RAILWAY LINE (SHAFT E6)



THE FIGURE : EL16, EL17, 3278, EL18, EL19, 3279, EL20, EL16.

REPRESENTS THE PROCLAMATION OF THE PORTION CONCERNED OF THE RAILWAY LINE (SHAFT E6) OVER A PORTION OF A ROAD SERVITUDE (TWEEDALE ROAD) OVER HOLDING 28 IN HYDE PARK AGRICULTURAL SETTLEMENT AS INTENDED BY THE PUBLICATION THEREOF IN THE PROVINCIAL GAZETTE AND SHOWN IN DETAIL ON PLAN GRP 03/38/05Exp.

FILE NO. 2/1/7/8-GAUTRAIN

CO-ORDINATE LIST WG 29° CONST. Y= +/- 0.00 X= +2 800 000.00

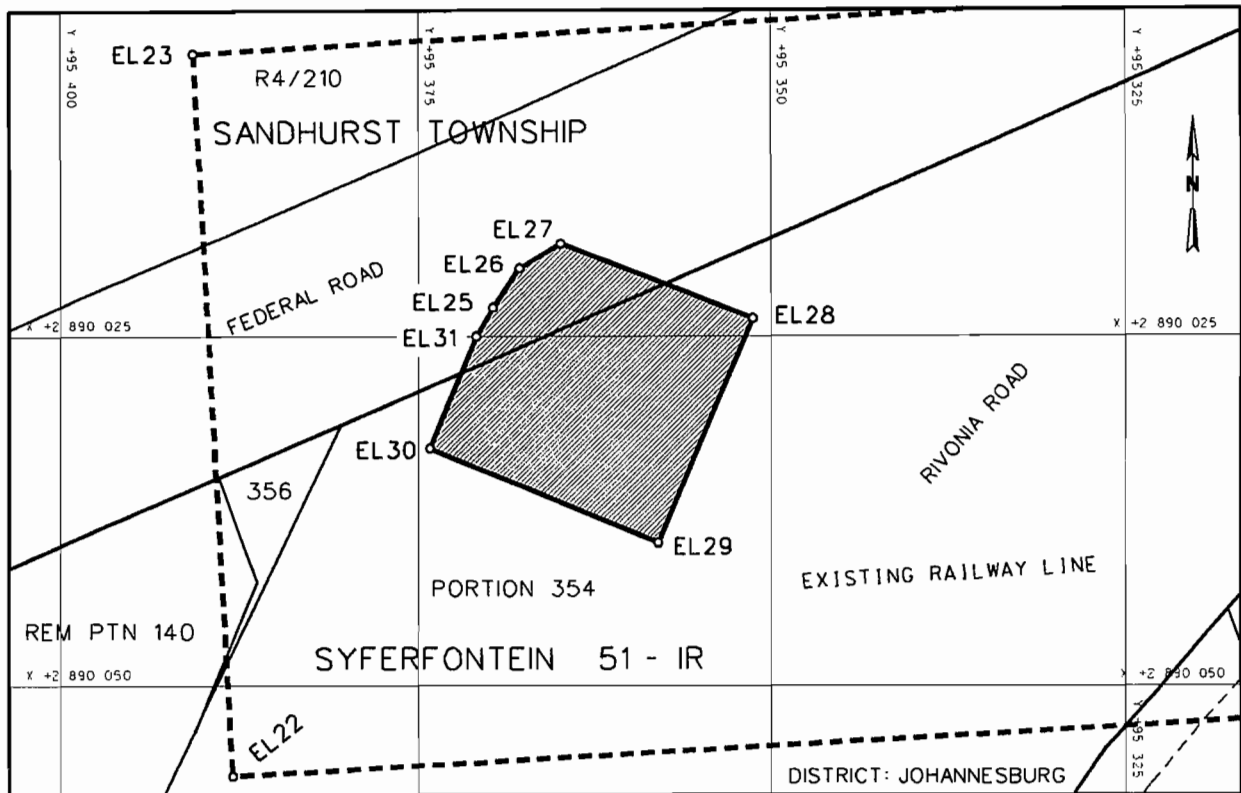
EL16	+95388.140	+91250.744	EL19	+95398.123	+91251.431	3278	+95388.583	+91261.736
EL17	+95388.523	+91260.237	EL20	+95397.643	+91250.386	3279	+95399.142	+91250.330
EL18	+95389.602	+91260.635						

NOTICE 1000 OF 2011**PROCLAMATION OF A PROVINCIAL RAILWAY LINE IN CONNECTION WITH THE GAUTRAIN RAPID RAIL LINK BETWEEN PRETORIA, JOHANNESBURG AND THE O R TAMBO INTERNATIONAL AIRPORT**

In terms of section 11(1)(b) of the Gauteng Transport Infrastructure Act, 2001 (Act No. 8 of 2001) the MEC hereby proclaims that a provincial railway line with varying widths exists on the land as described and indicated by the figure on the accompanying sketch plan.

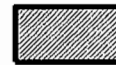
In terms of section 23(6) of the aforementioned act it is hereby stated that plan GRP 03/38/06 Exp which indicates the land encroached upon by the railway line in detail, is available for inspection at the office of the Department of Roads and Transport, First Floor, South Tower, Sage Life Building, 41 Simmonds Street, Johannesburg.

Reference: 2/1/7/8 - Gautrain



REFERENCE / VERWYSINGS

PROCLAIMED RAILWAY LINE (SHAFT E7)



THE FIGURE : EL25 - EL31, EL25.

REPRESENTS THE PROCLAMATION OF THE PORTION CONCERNED OF THE RAILWAY LINE (SHAFT E7) OVER A PORTION OF FEDERAL ROAD IN SANDHURST AND PORTION 354 (RIVONIA ROAD) OF THE FARM SYFERFONTEIN 51-IR AS INTENDED BY THE PUBLICATION THEREOF IN THE PROVINCIAL GAZETTE AND SHOWN IN DETAIL ON PLAN GRP 03/38/06Exp.

FILE NO. 2/1/7/8-GAUTRAIN

CO-ORDINATE LIST WG 29° CONST. Y= +/- 0.00 X= +2 800 000.00

EL25	+95369.731	+90022.951	EL28	+95351.282	+90023.748	EL31	+95370.889	+90025.003
EL26	+95367.867	+90020.116	EL29	+95357.987	+90039.741			
EL27	+95364.916	+90018.349	EL30	+95374.169	+90032.980			