

*THE PROVINCE OF
GAUTENG*

*DIE PROVINSIE
GAUTENG*

**Provincial Gazette Extraordinary
Buitengewone Provinsiale Koerant**

Vol. 17

PRETORIA, 6 APRIL 2011

No. 66

IMPORTANT NOTICE

The Government Printing Works will not be held responsible for faxed documents not received due to errors on the fax machine or faxes received which are unclear or incomplete. Please be advised that an "OK" slip, received from a fax machine, will not be accepted as proof that documents were received by the GPW for printing. If documents are faxed to the GPW it will be the sender's responsibility to phone and confirm that the documents were received in good order.

Furthermore the Government Printing Works will also not be held responsible for cancellations and amendments which have not been done on original documents received from clients.

CONTENTS • INHOUD

<i>No.</i>		<i>Page No.</i>	<i>Gazette No.</i>
GENERAL NOTICES			
1006	Gauteng Transport Infrastructure Act (8/2001): Proclamation of a provincial railway line in connection with the Gautrain Rapid Rail Link between Pretoria, Johannesburg and the OR Tambo International Airport.....	3	66
1007	do.: do.:.....	5	66

GENERAL NOTICES

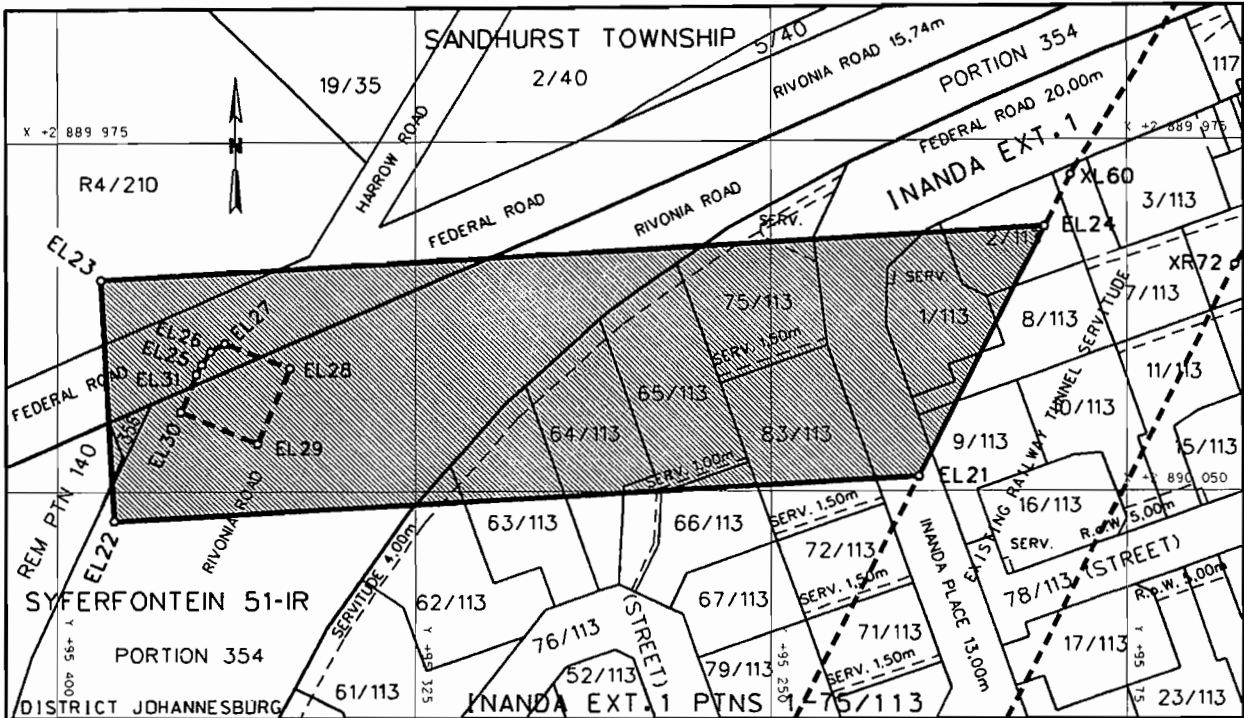
NOTICE 1006 OF 2011

PROCLAMATION OF A PROVINCIAL RAILWAY LINE IN CONNECTION WITH THE GAUTRAIN RAPID RAIL LINK BETWEEN PRETORIA, JOHANNESBURG AND THE O R TAMBO INTERNATIONAL AIRPORT

In terms of section 11(1)(b) of the Gauteng Transport Infrastructure Act, 2001 (Act No. 8 of 2001) the MEC hereby proclaims that a provincial railway line with varying widths exists in the tunnel servitude below the land as described and indicated by the figure on the accompanying sketch plan, which indicates the horizontal alignment of the railway line on the land.

In terms of section 23(6) of the aforementioned act it is hereby stated that plan GRP 03/38/06 Exp which indicates the horizontal alignment of the railway line on the land in detail, is available for inspection at the office of the Department of Roads and Transport, First Floor, South Tower, Sage Life Building, 41 Simmonds Street, Johannesburg.

Reference: 2/1/7/8 - Gautrain



REFERENCE / VERWYSINGS

PROCLAMATION OF A PORTION OF THE RAILWAY LINE



THE FIGURE : EL21, EL23, EL24, EL21.

REPRESENTS THE PROCLAMATION OF A PORTION OF THE RAILWAY LINE UNDER THE REMAINDER OF PORTION 4 OF ERF 210, A PORTION OF FEDERAL ROAD IN SANDHURST, THE REMAINDER OF PORTION 140, PORTION 354 (RIVONIA ROAD) AND PORTION 356 OF THE FARM SYFERFONTEIN 51-IR, PORTIONS 1, 2, 8, 9, 62 - 66, 75, 83 OF ERF 113 AND A PORTION OF INANDA PLACE IN INANDA EXTENSION 1 PORTIONS 1-75/113 AS INTENDED BY THE PUBLICATION THEREOF IN THE PROVINCIAL GAZETTE AND SHOWN IN DETAIL ON PLAN GRP 03/38/06Exp.

FILE NO. 2/1/7/8-GAUTRAIN

CO-ORDINATE LIST WG 29° CONST. Y= +/- 0.00 X= +2 800 000.00

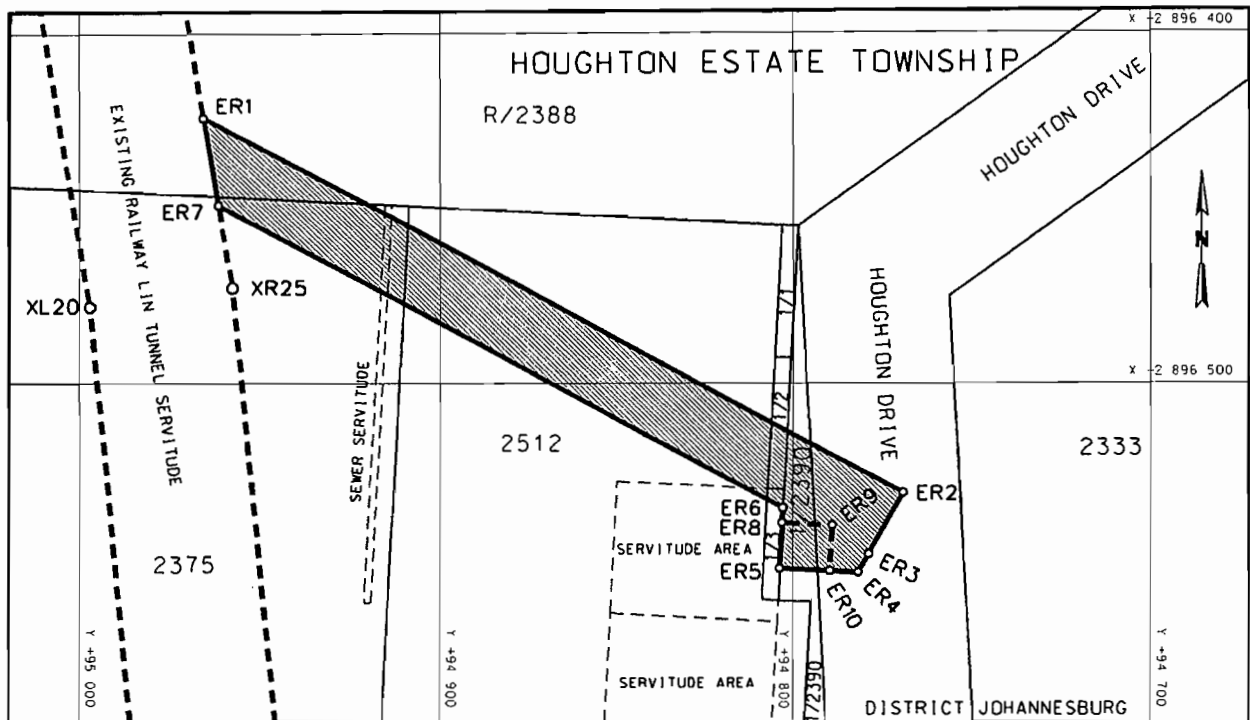
EL21	+95218.951	+90046.954	EL23	+95390.703	+90004.774
EL22	+95387.933	+90056.447	EL24	+95192.307	+89993.630

NOTICE 1007 OF 2011**PROCLAMATION OF A PROVINCIAL RAILWAY LINE IN CONNECTION WITH THE GAUTRAIN RAPID RAIL LINK BETWEEN PRETORIA, JOHANNESBURG AND THE O R TAMBO INTERNATIONAL AIRPORT**

In terms of section 11(1)(b) of the Gauteng Transport Infrastructure Act, 2001 (Act No. 8 of 2001) the MEC hereby proclaims that a provincial railway line with varying widths exists in the tunnel servitude below the land as described and indicated by the figure on the accompanying sketch plan, which indicates the horizontal alignment of the railway line on the land.

In terms of section 23(6) of the aforementioned act it is hereby stated that plan GRP 03/38/02 Exp which indicates the horizontal alignment of the railway line on the land in detail, is available for inspection at the office of the Department of Roads and Transport, First Floor, South Tower, Sage Life Building, 41 Simmonds Street, Johannesburg.

Reference: 2/1/7/8 - Gautrain



REFERENCE / VERWYSINGS

PROCLAIMED RAILWAY LINE IN TUNNEL SERVITUDE



THE FIGURE : ER1 - ER7, ER1

REPRESENTS THE PROCLAMATION OF A PORTION OF THE RAILWAY LINE IN THE TUNNEL SERVITUDE BELOW THE REMAINDER OF ERF 2388, ERF 2375, ERF 2512, PORTION 1 OF ERF 2, PORTION 1 OF ERF 3, PORTION 1 OF ERF 2390 AND A PORTION OF HOUGHTON DRIVE IN HOUGHTON ESTATE AS INTENDED BY THE PUBLICATION THEREOF IN THE PROVINCIAL GAZETTE AND SHOWN IN DETAIL ON PLAN GRP 03/38/02Exp.

FILE NO. 2/1/7/8-GAUTRAIN

CO-ORDINATE LIST WG 29° CONST. Y= +/- 0.00 X= +2 800 000.00

ER1	+94965.294	+96424.182	ER4	+94781.678	+96554.311	ER7	+94961.193	+96449.237
ER2	+94769.213	+96531.542	ER5	+94803.636	+96553.188			
ER3	+94778.817	+96549.085	ER6	+94802.755	+96535.979			