

*THE PROVINCE OF
GAUTENG*

*DIE PROVINSIE
GAUTENG*

**Provincial Gazette Extraordinary
Buitengewone Provinsiale Koerant**

Vol. 17

**PRETORIA, 19 JANUARY 2011
JANUARIE**

No. 8

IMPORTANT NOTICE

The Government Printing Works will not be held responsible for faxed documents not received due to errors on the fax machine or faxes received which are unclear or incomplete. Please be advised that an "OK" slip, received from a fax machine, will not be accepted as proof that documents were received by the GPW for printing. If documents are faxed to the GPW it will be the sender's responsibility to phone and confirm that the documents were received in good order.

Furthermore the Government Printing Works will also not be held responsible for cancellations and amendments which have not been done on original documents received from clients.

CONTENTS • INHOUD

<i>No.</i>		<i>Page No.</i>	<i>Gazette No.</i>
	GENERAL NOTICE		
114	Gauteng Transport Infrastructure Act (8/2001): Proclamation of an access road in connection with the Gautrain Rapid Rail Link between Pretoria, Johannesburg and the OR Tambo International Airport	3	8

GENERAL NOTICE

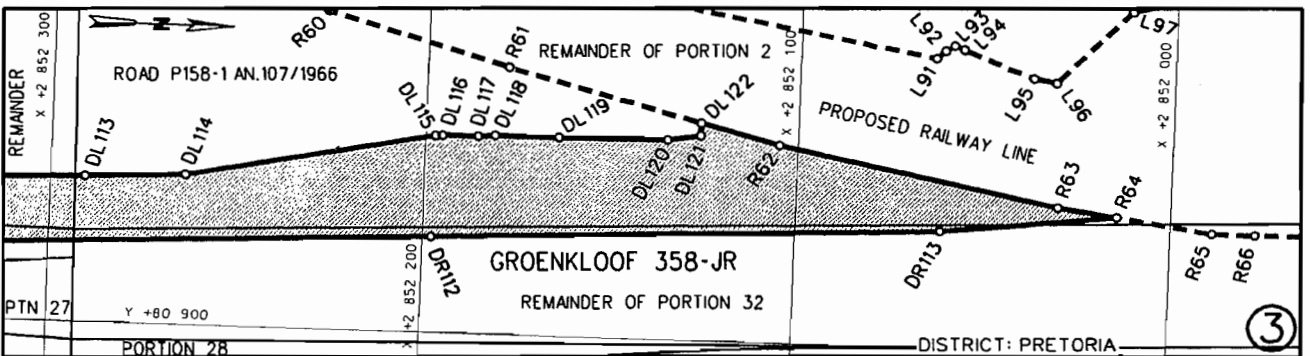
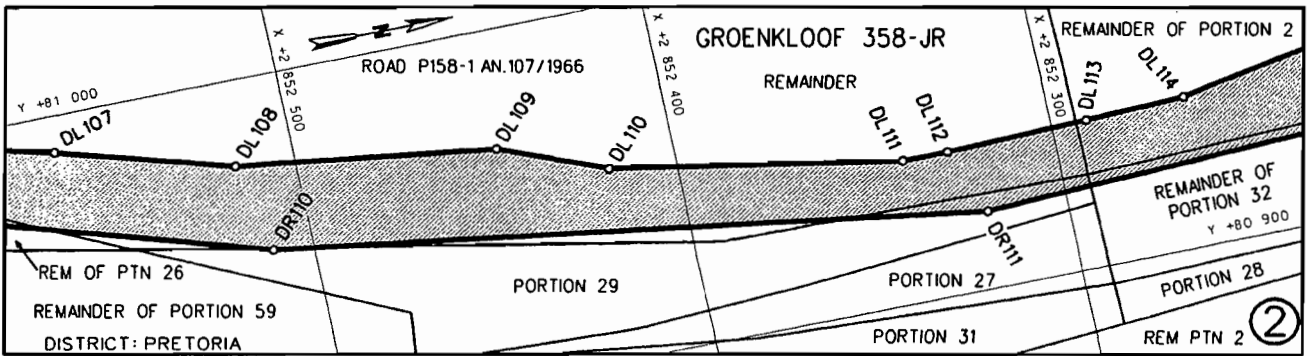
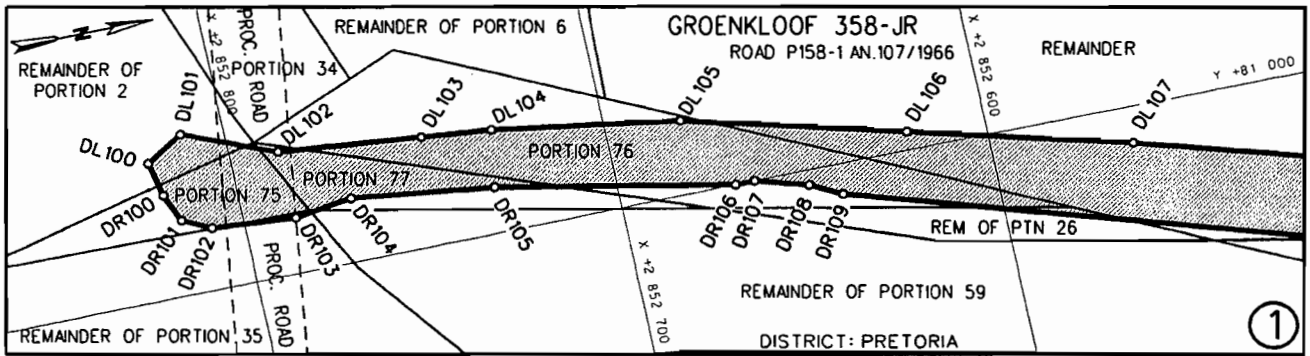
NOTICE 114 OF 2011

PROCLAMATION OF AN ACCESS ROAD IN CONNECTION WITH THE GAUTRAIN RAPID RAIL LINK BETWEEN PRETORIA, JOHANNESBURG AND THE O R TAMBO INTERNATIONAL AIRPORT

In terms of section 13 (1) of the Gauteng Transport Infrastructure Act, 2001 (Act No. 8 of 2001) the MEC hereby proclaims that an access road, with varying widths, exists on the land as described and indicated by the figure on the accompanying sketch plan.

In terms of section 23(6) of the aforementioned act it is hereby stated that plan GRP 03/38/37 Exp which indicates the land encroached upon by the access road in detail, is available for inspection at the office of the Department of Roads and Transport, First Floor, South Tower, Sage Life Building, 41 Simmonds Street, Johannesburg, during office hours.

Reference: 2/1/7/8 - Gautrain



REFERENCE

PROCLAIMED ACCESS ROAD



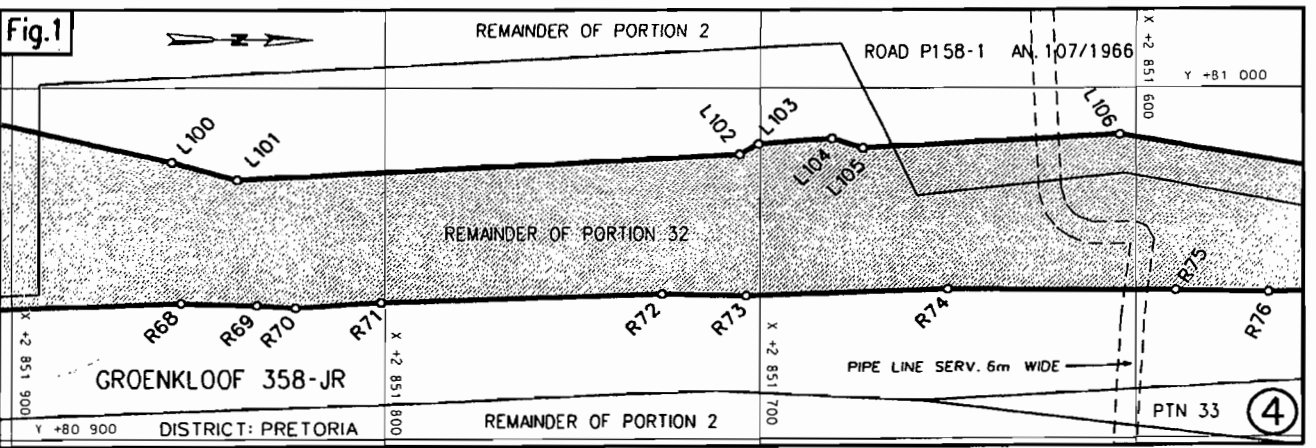
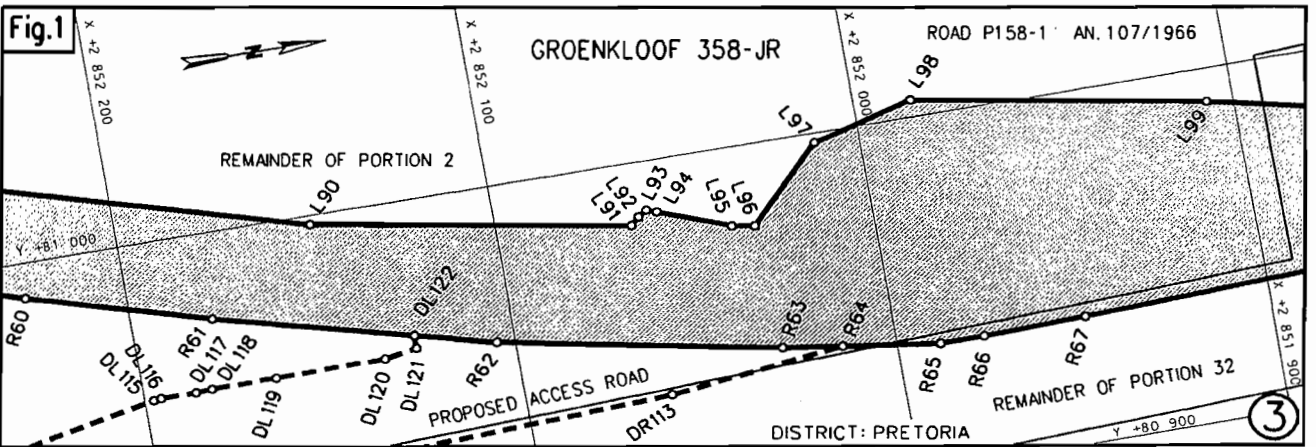
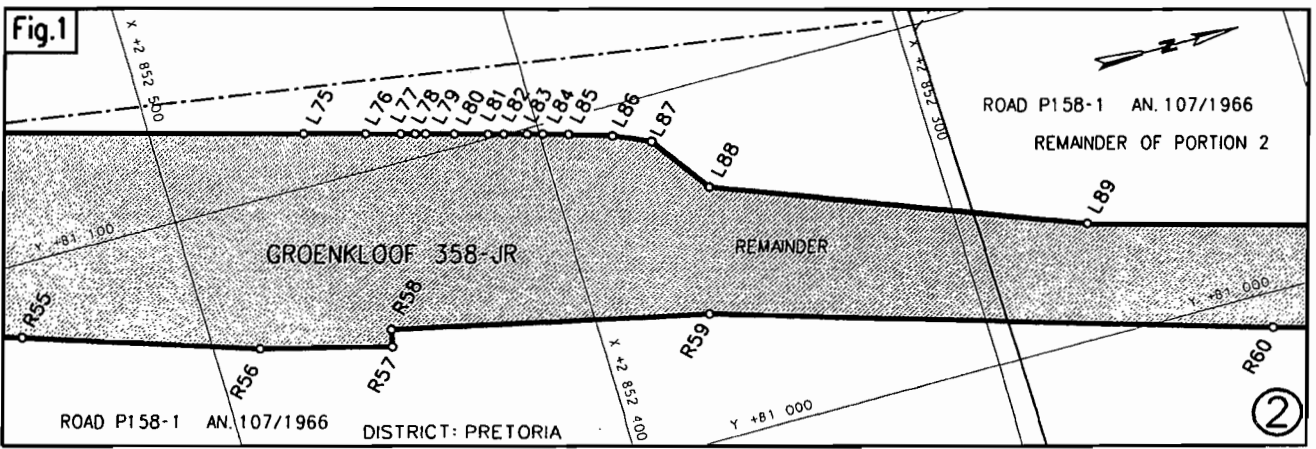
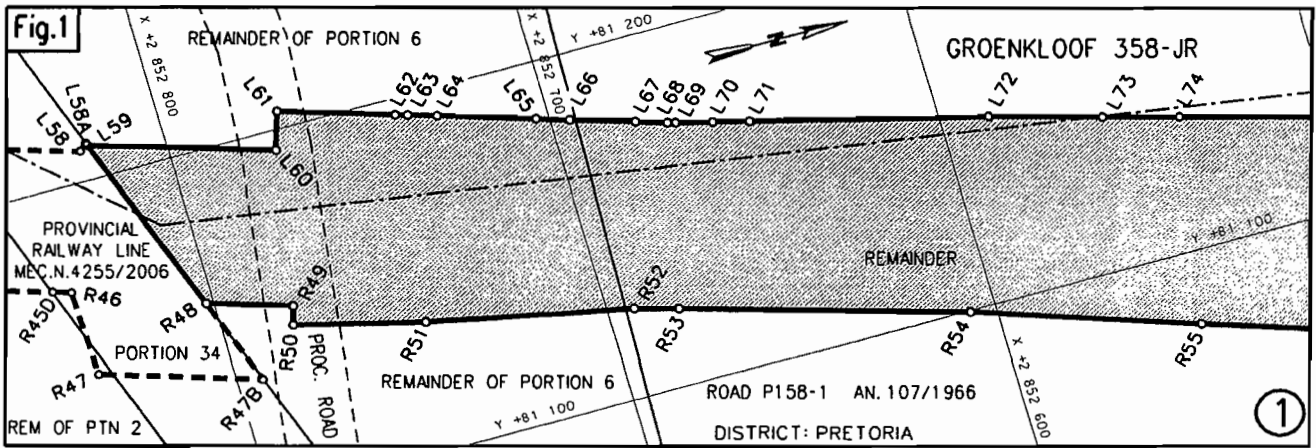
THE FIGURE : DL100 - DL122, R62, R63, R64, DR113 - DR100, DL100.

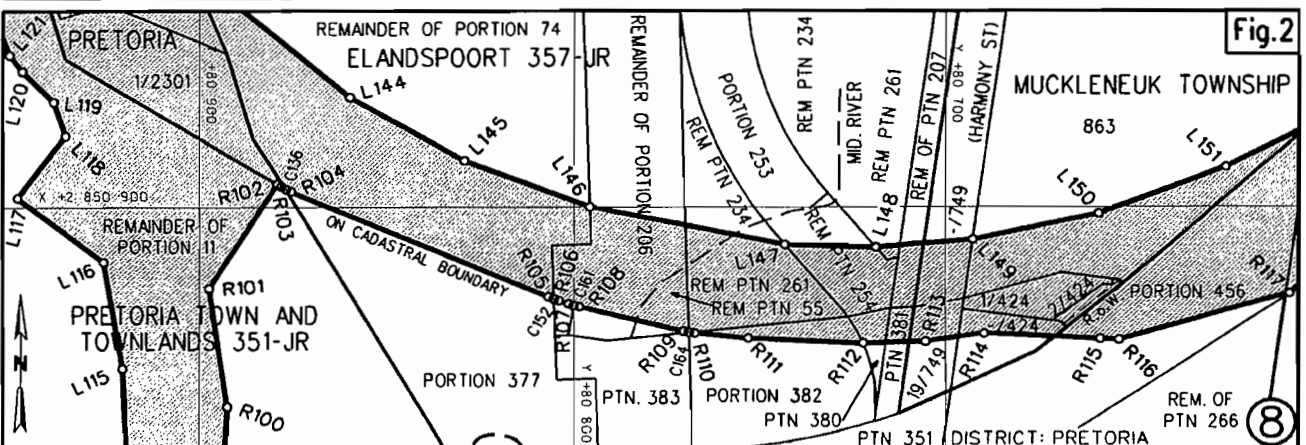
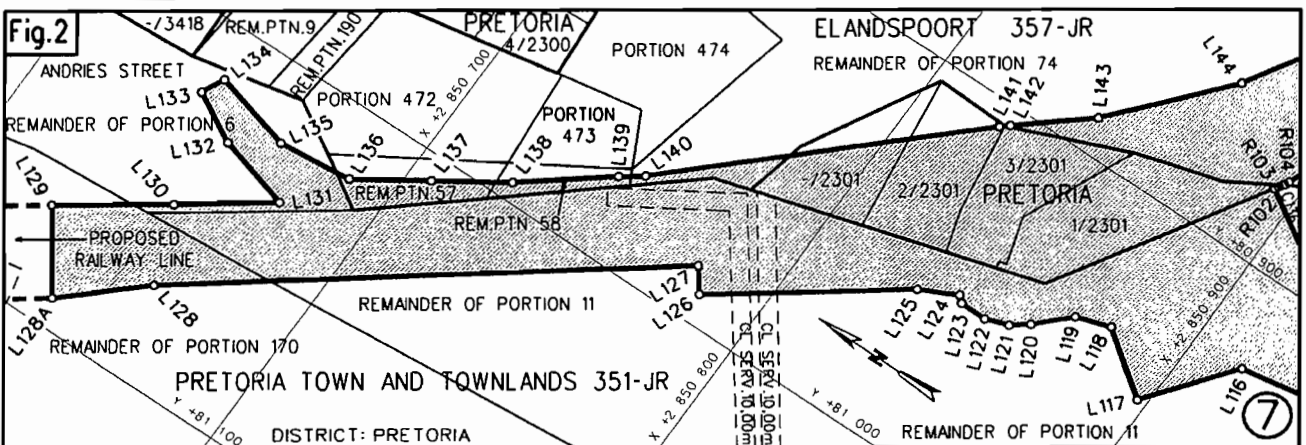
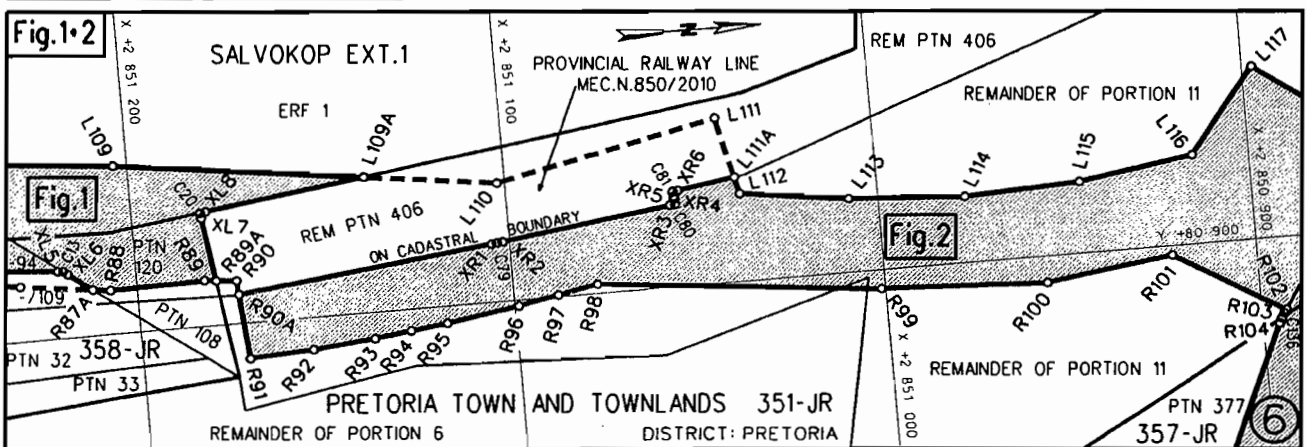
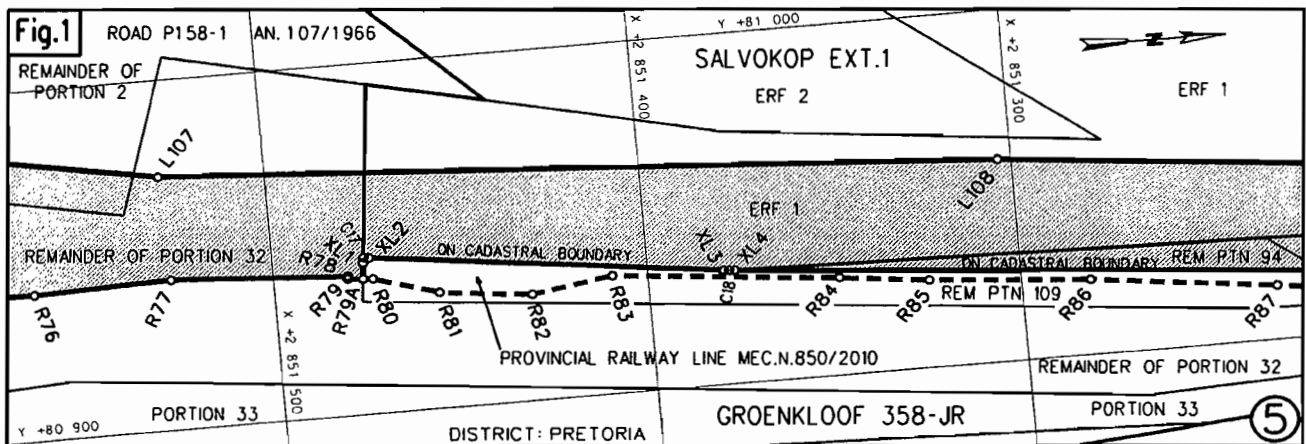
REPRESENTS THE PROCLAMATION OF AN ACCESS ROAD OVER THE REMAINDERS OF PORTIONS 2, 26, 32, 35, 59 AND THE REMAINDER OF THE FARM GROENKLOOF 358-JR AS INTENDED BY THE PUBLICATION THEREOF IN THE PROVINCIAL GAZETTE AND SHOWN IN DETAIL ON PLAN GRP 03/38/37Exp.

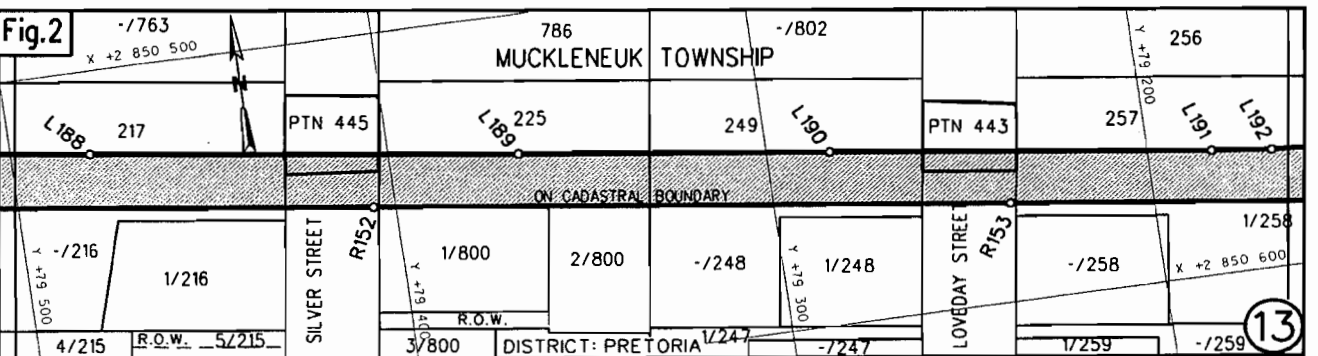
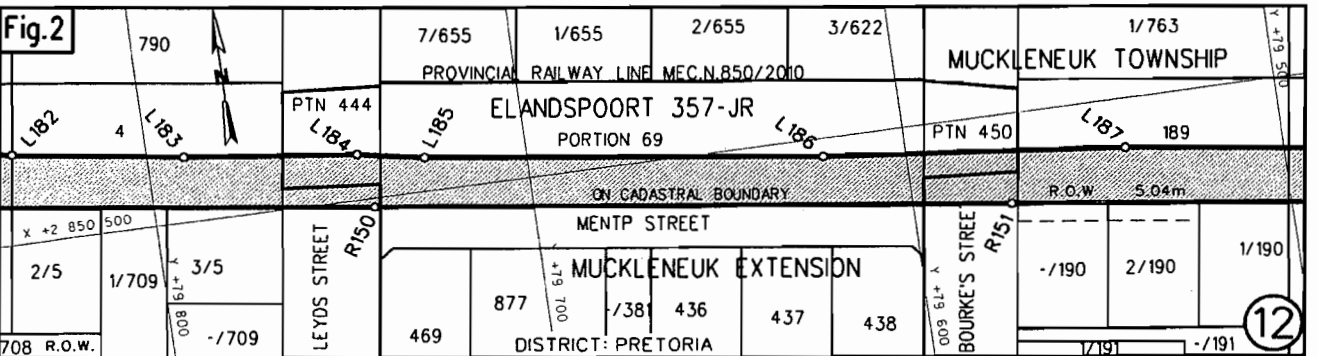
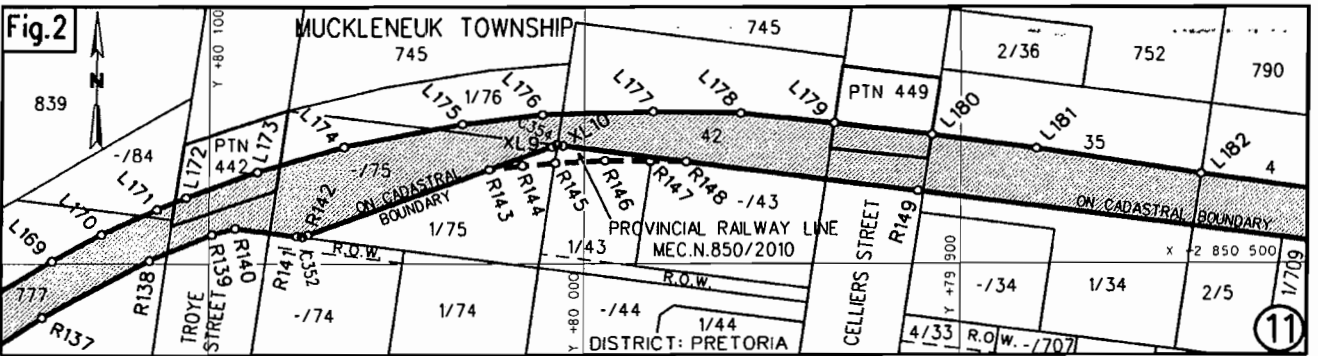
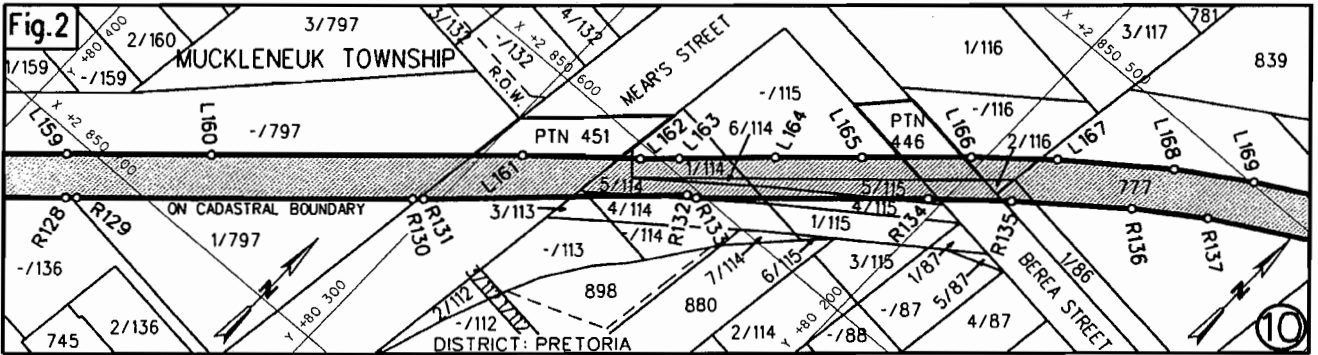
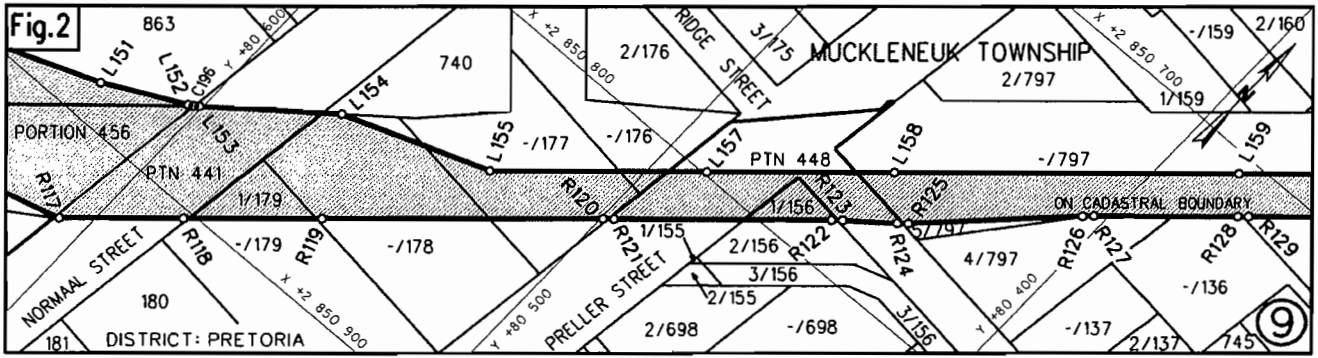
FILE NO. 2/1/7/8-GAUTRAIN

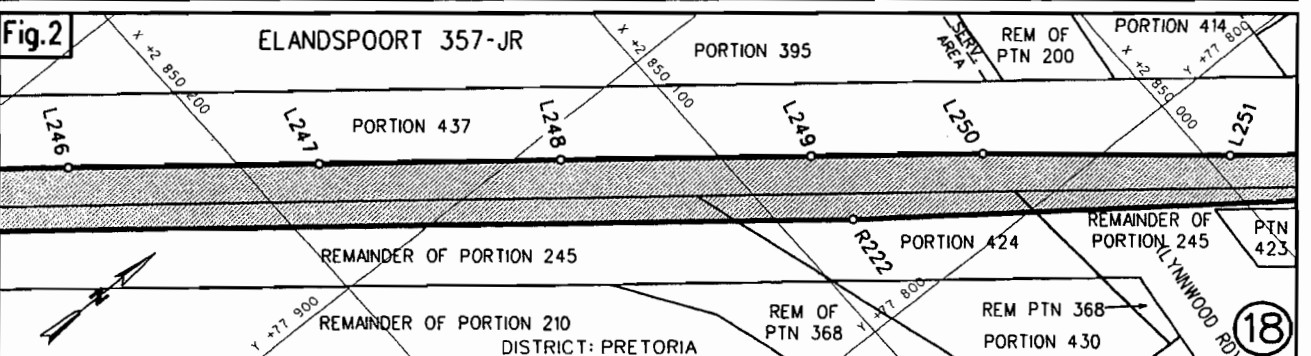
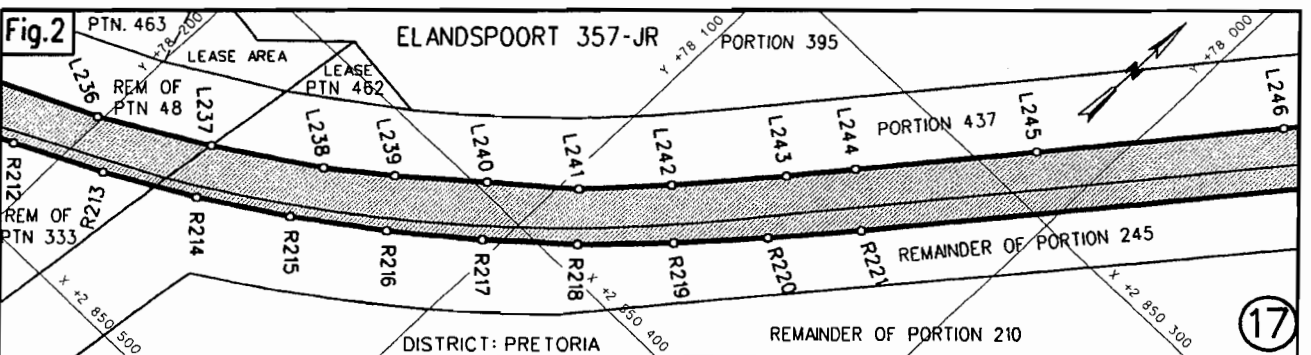
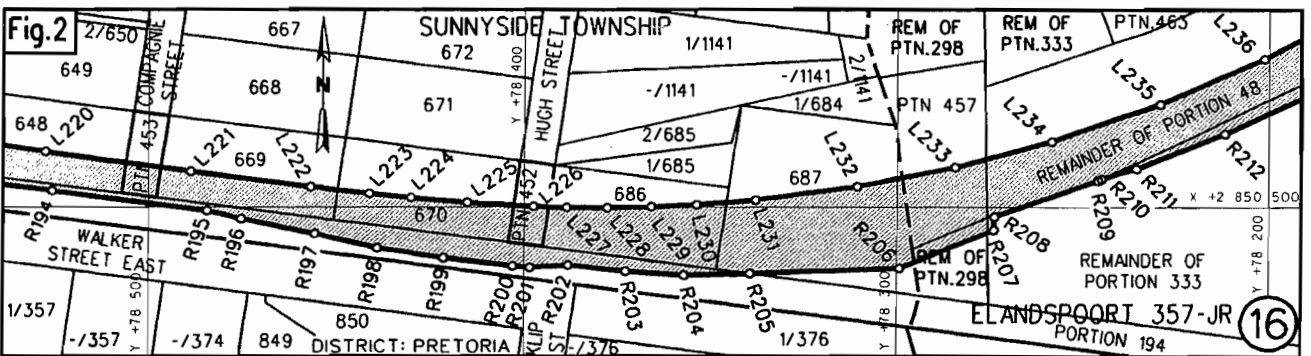
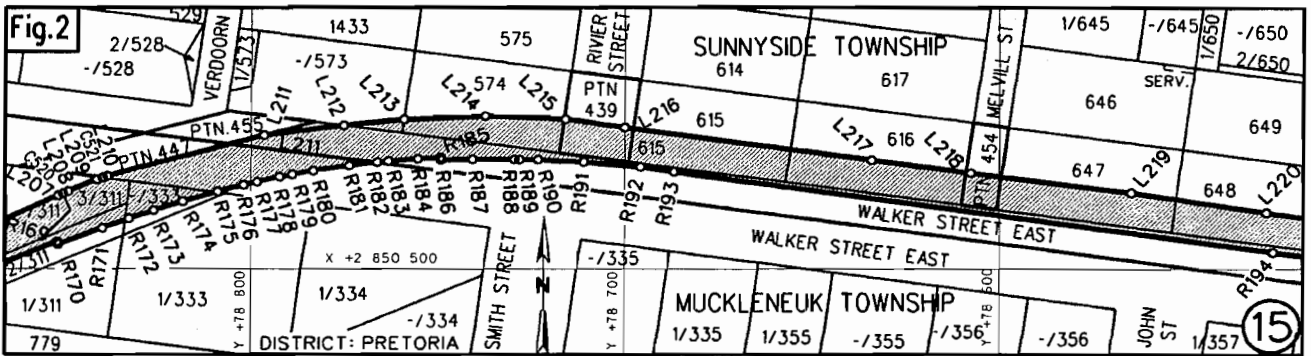
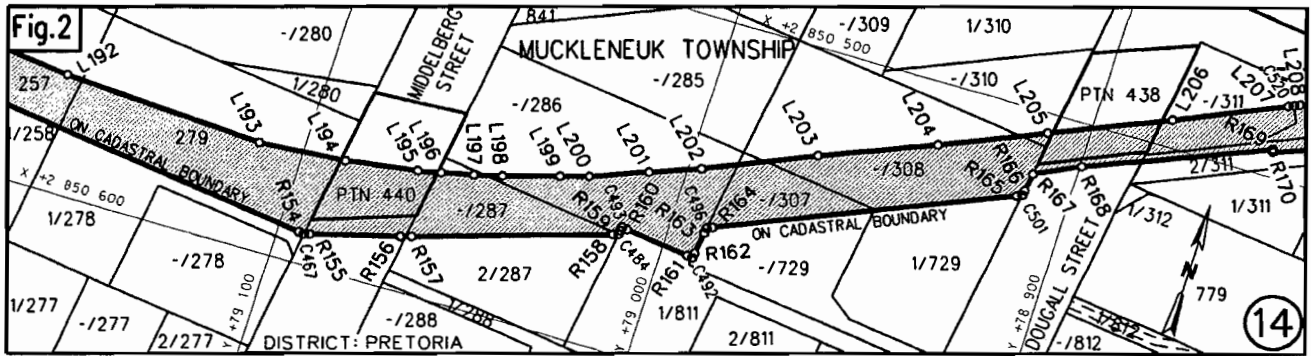
CO-ORDINATE LIST WG 29° CONSTANTS. Y= +/- 0.00 X= +2 800 000.00

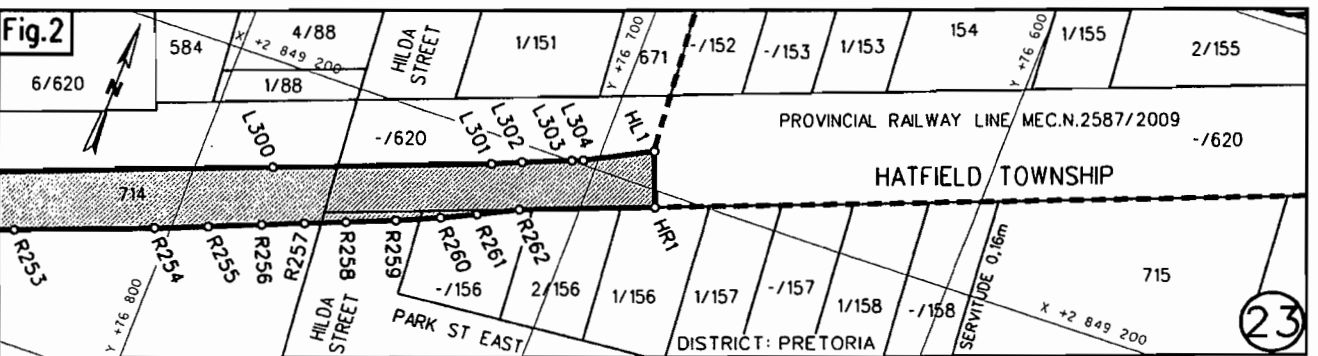
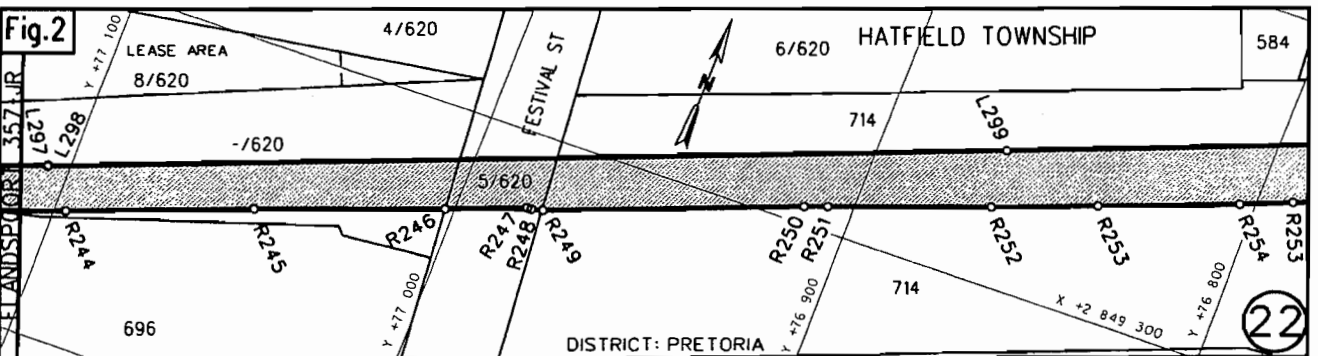
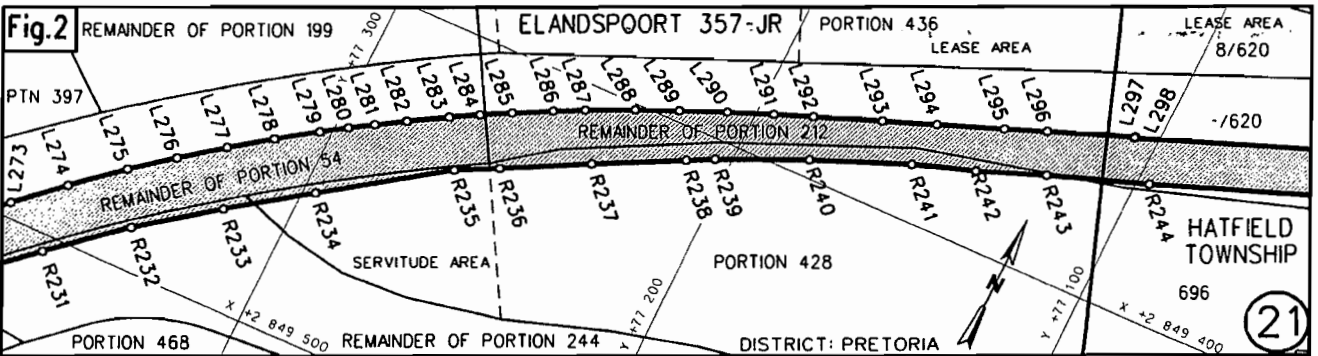
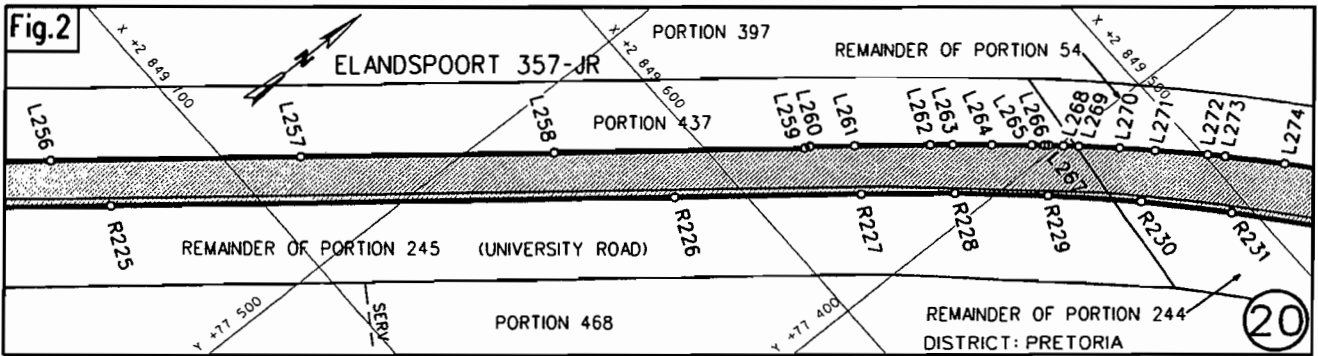
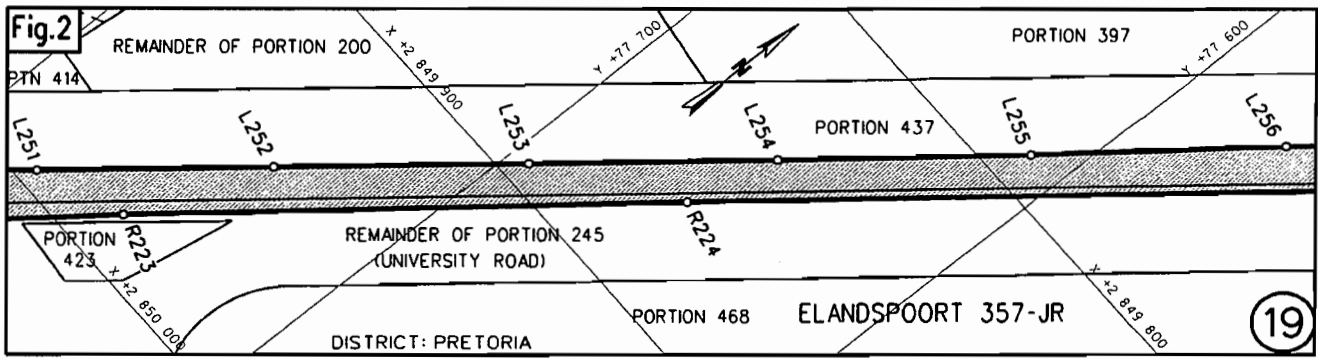
DL100	+81038.592	+52821.580	DL114	+80942.468	+52263.790	DR104	+81017.815	+52770.603
DL101	+81044.859	+52811.424	DL115	+80955.703	+52197.553	DR105	+81012.834	+52732.450
DL102	+81034.578	+52786.953	DL116	+80955.909	+52195.609	DR106	+80999.934	+52668.695
DL103	+81030.738	+52748.754	DL117	+80955.967	+52186.094	DR107	+80999.964	+52663.565
DL104	+81028.856	+52730.028	DL118	+80956.258	+52181.641	DR108	+80995.799	+52649.525
DL105	+81020.740	+52679.402	DL119	+80956.357	+52164.255	DR109	+80991.498	+52641.090
DL106	+81005.192	+52621.051	DL120	+80956.640	+52134.908	DR110	+80950.722	+52510.786
DL107	+80989.645	+52562.700	DL121	+80958.134	+52126.120	DR111	+80921.613	+52321.523
DL108	+80975.804	+52515.935	DL122	+80961.742	+52126.070	DR112	+80927.195	+52197.573
DL109	+80966.039	+52446.846				DR113	+80933.330	+52061.343
DL110	+80954.204	+52417.975	DR100	+81029.049	+52819.439			
DL111	+80940.067	+52340.833	DR101	+81021.134	+52816.181	R62	+80956.096	+52104.925
DL112	+80940.090	+52328.688	DR102	+81017.408	+52808.721	R63	+80941.267	+52030.098
DL113	+80941.383	+52290.447	DR103	+81015.552	+52786.076	R64	+80939.014	+52014.316











REFERENCE

PROCLAIMED RAILWAY LINE



THE FIGURES : (1) L59 - L109, L109A, XL8, C20, XL7, R89A, R89, R88, R87A, XL6, C13, XL5, XL4, C18, XL3, XL2, C17, XL1, R79A, R79 - R48, L59.
 (2) R90A, XR1, C79, XR2, XR3, C80, XR4, XR5, C81, XR6, L111A, L112 - L128, L128A, L129 - L152, C196, L153 - L207, C520, L208, L209, C521, L210 - L304, HL1, HR1, R262 - R166, C501, R165, R164, C496, R163, R162, C492, R161, R160, C493, R159, C484, R158 - R155, C467, R154 - R148, XL10, C354, XL9, R143, R142, C352, R141 - R110, C164, R109, R108, C161, R107, R106, C152, R105, R104, C136, R103 - R91, R90A.

REPRESENT THE PROCLAMATION OF THE PORTIONS CONCERNED OF THE RAILWAY LINE OVER THE REMAINDER, THE REMAINDERS OF PORTIONS 6, 2, 32, 94 AND PORTION 120 OF THE FARM GROENKLOOF 358-JR, ERF 1 IN SALVOKOP EXTENSION 1, THE REMAINDERS OF PORTIONS 11, 170, 6 AND A PORTION OF ANDRIES STREET OF THE FARM PRETORIA TOWN AND TOWNLANDS 351-JR, PORTIONS 1, 2, 3 AND THE REMAINDER OF ERF 2301 IN PRETORIA, THE REMAINDERS OF PORTIONS 57, 58, 74, 206, 55, 234, 261, 254, 207, PORTIONS 380, 381, 382, 456, 441, 448, 446, 442, 449, 444, 69, 450, 445, 443, 440 AND 438 OF THE FARM ELANDSPOORT 357-JR, PORTION 19 AND THE REMAINDER OF ERF 749 (HARMONY STREET), PORTIONS 1, 2 AND THE REMAINDER OF ERF 424, ERF 863, PORTION 1 OF ERF 179, THE REMAINDERS OF ERVEN 178, 177, 176, PORTION 1 OF ERF 156, THE REMAINDER OF ERF 797, PORTION 3 OF ERF 113, PORTIONS 1, 3, 4, 5, 6 OF ERF 114, PORTIONS 4, 5 AND THE REMAINDER OF ERF 115, PORTION 1 OF ERF 86, PORTION 2 AND THE REMAINDER OF ERF 116, ERF 777, THE REMAINDER OF ERF 75, PORTION 1 OF ERF 76, ERVEN 42, 35, 4, 189, 217, 225, 249, 257, 279, THE REMAINDERS OF ERVEN 287, 286, 307, 308, PORTIONS 2, 3 AND THE REMAINDER OF ERF 311, THE REMAINDER OF ERF 333, AND PORTIONS OF THE STREETS NORMAAL, PRELLER, RIDGE, MEAR'S, BERA, TROYE, CELLIERS, LEYDS, BOURKE'S, SILVER, LOVEDAY, MIDDELBERG, DOUGALL AND WALKER STREET EAST IN MUCKLENEUK, THE REMAINDER OF ERF 573, ERVEN 574, 615, 616, 647, 648, 669, 670, 686, 687 AND A PORTION OF WALKER STREET EAST IN SUNNYSIDE, PORTIONS 439, 454, 453, 452, 457, 437, 424, 248 AND THE REMAINDERS OF PORTIONS 48, 298, 333, 245, 54, 244, 212 OF THE FARM ELANDSPOORT 357-JR, PORTION 5 (FESTIVAL ST), THE REMAINDER OF LOT 620, LOT 714, THE REMAINDER OF LOT 156 AND A PORTION OF HILDA STREET IN HATFIELD AS INTENDED BY THE PUBLICATION THEREOF IN THE PROVINCIAL GAZETTE AND SHOWN IN DETAIL ON PLANS GRP 03/38/37Exp - 40Exp.

FILE NO. 2/1/7/8-GAUTRAIN

CO-ORDINATE LIST WG 29° CONSTANTS. Y= +/- 0.00 X= +2 800 000.00

L59	+81209.598	+52820.527	L228	+78377.543	+50500.187	R137	+80144.525	+50515.250
L60	+81194.335	+52772.252	L229	+78365.604	+50499.947	R138	+80115.641	+50499.214
L61	+81204.887	+52768.916	L230	+78353.435	+50499.338	R139	+80099.131	+50491.853
L62	+81195.353	+52739.078	L231	+78337.661	+50497.991	R140	+80092.948	+50490.091
L63	+81194.341	+52735.909	L232	+78310.548	+50494.077	R141	+80076.645	+50492.323
L64	+81191.968	+52728.482	L233	+78284.454	+50488.614	R142	+80073.760	+50491.985
L65	+81183.975	+52703.469	L234	+78258.817	+50481.291	R143	+80025.401	+50473.234
L66	+81181.242	+52694.915	L235	+78229.729	+50470.546	R144	+80016.644	+50472.138
L67	+81175.854	+52678.062	L236	+78201.333	+50457.558	R145	+80007.853	+50471.379
L68	+81173.265	+52669.950	L237	+78173.936	+50442.091	R146	+79994.461	+50470.708
L69	+81172.597	+52667.861	L238	+78148.211	+50425.336	R147	+79982.351	+50470.755
L70	+81170.096	+52658.291	L239	+78133.277	+50413.565	R148	+79972.805	+50470.945
L71	+81167.594	+52648.721	L240	+78114.615	+50397.457	R149	+79911.328	+50479.360
L72	+81151.401	+52587.195	L241	+78095.771	+50381.345	R150	+79742.120	+50502.522
L73	+81143.051	+52558.189	L242	+78078.808	+50362.834	R151	+79574.025	+50525.532
L74	+81137.474	+52538.825	L243	+78058.857	+50339.257	R152	+79405.930	+50548.542
L75	+81114.808	+52460.108	L244	+78047.157	+50324.893	R153	+79237.835	+50571.551
L76	+81110.265	+52444.330	L245	+78016.605	+50287.288	R154	+79094.384	+50591.188
L77	+81107.678	+52435.345	L246	+77974.383	+50235.211	R155	+79091.452	+50590.992
L78	+81106.625	+52431.688	L247	+77932.217	+50183.361	R156	+79068.254	+50584.594
L79	+81105.848	+52428.991	L248	+77891.670	+50133.190	R157	+79065.379	+50583.739
L80	+81103.735	+52421.653	L249	+77849.361	+50081.163	R158	+79013.764	+50567.282
L81	+81101.296	+52413.181	L250	+77820.632	+50045.728	R159	+79012.186	+50565.734
L82	+81100.123	+52409.140	L251	+77777.196	+49994.695	R160	+79010.550	+50564.845
L83	+81098.398	+52403.118	L252	+77737.290	+49945.473	R161	+78992.934	+50567.257
L84	+81097.232	+52399.069	L253	+77694.676	+49893.071	R162	+78991.245	+50565.974
L85	+81095.339	+52392.492	L254	+77652.621	+49841.356	R163	+78990.380	+50559.663
L86	+81091.594	+52381.295	L255	+77610.605	+49789.056	R164	+78988.801	+50557.580
L87	+81087.310	+52371.719	L256	+77569.084	+49735.778	R165	+78913.871	+50525.088
L88	+81070.452	+52360.365	L257	+77527.094	+49683.829	R166	+78912.287	+50523.005
L89	+81032.653	+52266.492	L258	+77484.854	+49631.728	R167	+78911.589	+50518.004
L90	+80997.318	+52148.177	L259	+77442.747	+49579.550	R168	+78899.568	+50512.064
L91	+80982.207	+52064.030	L260	+77442.156	+49578.069	R169	+78851.881	+50492.233
L92	+80984.343	+52061.719	L261	+77434.637	+49568.823	R170	+78851.575	+50493.001
L93	+80985.910	+52059.384	L262	+77422.026	+49553.367	R171	+78839.591	+50488.362
L94	+80984.900	+52056.790	L263	+77418.178	+49548.738	R172	+78832.369	+50485.718
L95	+80977.426	+52037.604	L264	+77411.574	+49540.861	R173	+78825.814	+50483.440

CO-ORDINATE LIST WG 29° CONSTANTS. Y= +/- 0.00 X= +2 800 000.00

L96	+80976.355	+52031.646	L265	+77404.679	+49532.825	R174	+78818.046	+50480.906
L97	+80997.132	+52011.981	L266	+77402.442	+49530.301	R175	+78808.804	+50478.153
L98	+81004.835	+51984.765	L267	+77401.737	+49529.510	R176	+78801.887	+50476.296
L99	+80990.509	+51907.140	L268	+77399.116	+49526.584	R177	+78798.295	+50475.405
L100	+80978.758	+51856.679	L269	+77396.401	+49523.578	R178	+78792.285	+50474.032
L101	+80973.837	+51839.281	L270	+77388.945	+49515.500	R179	+78788.907	+50473.326
L102	+80981.038	+51705.432	L271	+77382.640	+49509.027	R180	+78783.336	+50472.265
L103	+80983.913	+51700.467	L272	+77372.701	+49499.148	R181	+78773.842	+50470.748
L104	+80985.535	+51680.931	L273	+77369.292	+49495.907	R182	+78766.504	+50469.824
L105	+80982.823	+51672.573	L274	+77357.413	+49485.031	R183	+78763.562	+50469.514
L106	+80986.476	+51604.259	L275	+77344.656	+49474.092	R184	+78755.701	+50468.853
L107	+80972.638	+51528.263	L276	+77334.349	+49465.696	R185	+78749.548	+50468.505
L108	+80957.693	+51303.576	L277	+77323.487	+49457.401	R186	+78749.461	+50469.202
L109	+80947.729	+51203.699	L278	+77313.242	+49449.905	R187	+78741.156	+50468.968
L109A	+80938.658	+51137.146	L279	+77303.104	+49442.931	R188	+78729.885	+50469.037
L110	+80933.870	+51102.026	L280	+77296.712	+49438.656	R189	+78728.558	+50469.075
L111	+80947.039	+51042.048	L281	+77290.760	+49434.840	R190	+78723.449	+50469.101
L111A	+80929.853	+51038.082	L282	+77283.627	+49430.428	R191	+78711.092	+50469.777
L112	+80925.035	+51036.968	L283	+77273.888	+49424.582	R192	+78695.713	+50471.237
L113	+80920.982	+51007.809	L284	+77266.810	+49420.577	R193	+78686.614	+50472.676
L114	+80918.900	+50976.869	L285	+77259.269	+49416.437	R194	+78526.066	+50495.265
L115	+80920.392	+50945.977	L286	+77249.656	+49411.363	R195	+78484.686	+50501.010
L116	+80925.493	+50915.524	L287	+77241.955	+49407.538	R196	+78475.496	+50503.323
L117	+80949.144	+50897.266	L288	+77229.775	+49401.713	R197	+78455.745	+50507.666
L118	+80936.017	+50879.810	L289	+77219.029	+49396.968	R198	+78439.164	+50511.692
L119	+80939.191	+50870.227	L290	+77207.091	+49391.904	R199	+78421.454	+50514.458
L120	+80947.785	+50861.657	L291	+77195.592	+49387.299	R200	+78403.017	+50516.763
L121	+80951.330	+50856.938	L292	+77185.834	+49383.480	R201	+78398.335	+50517.229
L122	+80953.624	+50850.619	L293	+77168.563	+49376.856	R202	+78387.989	+50516.506
L123	+80953.440	+50843.078	L294	+77155.120	+49371.731	R203	+78372.525	+50518.289
L124	+80951.890	+50841.199	L295	+77138.485	+49365.387	R204	+78356.806	+50519.367
L125	+80956.960	+50831.016	L296	+77127.822	+49361.319	R205	+78339.067	+50518.929
L126	+80991.737	+50783.775	L297	+77105.937	+49352.971	R206	+78299.200	+50517.462
L127	+80985.248	+50778.840	L298	+77105.937	+49353.192	R207	+78274.326	+50506.617
L128	+81073.116	+50662.482	L299	+76867.619	+49262.095	R208	+78274.165	+50502.806
L128A	+81091.947	+50641.872	L300	+76780.428	+49228.647	R209	+78246.041	+50492.388
L129	+81070.777	+50626.813	L301	+76726.417	+49208.150	R210	+78245.057	+50491.898
L130	+81051.690	+50653.888	L302	+76718.870	+49204.845	R211	+78235.910	+50488.883
L131	+81035.051	+50676.732	L303	+76706.592	+49199.958	R212	+78211.988	+50479.043
L132	+81029.123	+50655.735	L304	+76703.682	+49198.800	R213	+78188.944	+50467.677
L133	+81021.467	+50641.607				R214	+78166.265	+50455.086
L134	+81014.986	+50644.733	R48	+81157.710	+52802.032	R215	+78144.717	+50441.243
L135	+81021.139	+50667.397	R49	+81150.700	+52779.866	R216	+78123.729	+50426.028
L136	+81019.024	+50688.159	R50	+81145.486	+52781.328	R217	+78104.011	+50409.704
L137	+81006.971	+50706.302	R51	+81136.661	+52747.305	R218	+78084.940	+50392.432
L138	+80994.918	+50724.445	R52	+81125.107	+52692.796	R219	+78066.826	+50373.885
L139	+80977.231	+50746.909	R53	+81121.789	+52681.280	R220	+78050.033	+50355.113
L140	+80973.001	+50752.708	R54	+81099.584	+52606.870	R221	+78033.713	+50335.938
L141	+80907.191	+50822.615	R55	+81079.412	+52548.720	R222	+77828.406	+50084.059
L142	+80905.194	+50824.852	R56	+81058.703	+52487.868	R223	+77752.398	+49984.750
L143	+80889.913	+50842.918	R57	+81049.661	+52454.019	R224	+77658.864	+49867.477
L144	+80859.778	+50868.960	R58	+81054.536	+52452.904	R225	+77548.815	+49731.421
L145	+80829.339	+50886.878	R59	+81035.409	+52370.219	R226	+77454.372	+49614.933
L146	+80795.666	+50899.861	R60	+80990.121	+52227.118	R227	+77422.961	+49576.170
L147	+80743.002	+50910.637	R61	+80975.698	+52178.332	R228	+77407.107	+49557.070
L148	+80718.574	+50911.435	R62	+80956.096	+52104.925	R229	+77390.776	+49538.716
L149	+80692.753	+50909.232	R63	+80941.267	+52030.098	R230	+77373.700	+49521.003
L150	+80658.966	+50901.927	R64	+80939.014	+52014.316	R231	+77355.674	+49504.614
L151	+80624.758	+50888.733	R65	+80935.152	+51988.475	R232	+77336.717	+49488.490
L152	+80603.255	+50877.667	R66	+80935.119	+51976.782	R233	+77316.955	+49473.450
L153	+80600.752	+50876.041	R67	+80935.831	+51949.303	R234	+77296.693	+49459.088
L154	+80571.248	+50852.299	R68	+80939.113	+51854.056	R235	+77266.216	+49437.743
L155	+80531.116	+50837.724	R69	+80938.511	+51833.810	R236	+77255.499	+49432.218
L157	+80487.798	+50799.111	R70	+80937.857	+51823.564	R237	+77233.798	+49420.729
L158	+80450.771	+50766.024	R71	+80939.384	+51800.987	R238	+77211.240	+49409.075
L159	+80382.503	+50705.021	R72	+80941.748	+51726.135	R239	+77204.321	+49405.590
L160	+80353.668	+50679.254	R73	+80941.210	+51703.708	R240	+77181.486	+49395.099
L161	+80292.000	+50623.824	R74	+80943.017	+51650.019	R241	+77156.198	+49384.743
L162	+80267.830	+50603.419	R75	+80942.473	+51589.409	R242	+77140.025	+49379.373
L163	+80260.273	+50596.469	R76	+80941.828	+51564.615	R243	+77122.560	+49372.642
L164	+80241.387	+50579.190	R77	+80943.036	+51527.302	R244	+77096.835	+49363.450
L165	+80224.409	+50563.887	R78	+80939.965	+51480.127	R245	+77050.064	+49345.821
L166	+80202.857	+50544.429	R79	+80939.248	+51480.127	R246	+77002.430	+49328.501
L167	+80185.303	+50529.628	R79A	+80938.879	+51476.161	R247	+76982.062	+49320.736
L168	+80160.612	+50511.065	R80	+80938.632	+51473.513	R248	+76980.913	+49320.776
L169	+80142.023	+50499.415	R81	+80933.124	+51456.282	R249	+76977.884	+49320.063
L170	+80128.540	+50491.860	R82	+80930.404	+51431.493	R250	+76912.647	+49295.179
L171	+80113.729	+50484.769	R83	+80933.889	+51409.473	R251	+76906.689	+49293.050
L172	+80106.071	+50481.309	R84	+80927.917	+51348.380	R252	+76865.923	+49278.529
L173	+80087.172	+50473.963	R85	+80925.101	+51324.594	R253	+76839.340	+49268.662
L174	+80064.140	+50466.785	R86	+80921.560	+51281.619	R254	+76804.028	+49255.389
L175	+80032.648	+50460.315	R87	+80915.535	+51231.800	R255	+76790.892	+49250.107
L176	+80011.353	+50457.538	R87A	+80912.921	+51211.916	R256	+76777.756	+49244.825

CO-ORDINATE LIST WG 29° CONSTANTS. Y= +/- 0.00 X= +2 800 000.00

L177	+79981.663	+50456.651	R88	+80912.302	+51207.198	R257	+76767.202	+49240.577
L178	+79958.201	+50457.155	R89	+80912.927	+51181.984	R258	+76756.919	+49236.483
L179	+79933.405	+50459.979	R89A	+80912.611	+51178.791	R259	+76744.685	+49231.612
L180	+79907.620	+50463.333	R90	+80912.079	+51173.384	R260	+76733.818	+49226.877
L181	+79879.821	+50467.194	R90A	+80908.136	+51173.042	R261	+76725.163	+49222.719
L182	+79836.079	+50474.502	R91	+80889.812	+51171.456	R262	+76715.046	+49217.547
L183	+79790.211	+50481.400	R92	+80890.891	+51154.457	HL1	+76686.572	+49189.987
L184	+79744.751	+50487.030	R93	+80892.534	+51137.935	HR1	+76681.011	+49204.602
L185	+79727.035	+50490.508	R94	+80893.830	+51128.186	XL1	+80943.537	+51475.713
L186	+79621.786	+50505.178	R95	+80895.127	+51118.438	XL2	+80944.841	+51474.082
L187	+79542.018	+50513.973	R96	+80898.320	+51099.010	XL3	+80932.819	+51379.438
L188	+79478.503	+50523.230	R97	+80900.447	+51088.187	XL4	+80932.500	+51376.456
L189	+79365.502	+50539.081	R98	+80902.574	+51077.364	XL5	+80918.985	+51221.260
L190	+79283.218	+50550.449	R99	+80894.597	+51001.153	XL6	+80917.950	+51218.569
L191	+79182.904	+50564.511	R100	+80892.368	+50956.842	XL7	+80930.766	+51181.425
L192	+79166.958	+50566.465	R101	+80897.371	+50923.192	XL8	+80932.464	+51180.155
L193	+79111.946	+50570.093	R102	+80879.131	+50893.486	XL9	+80008.721	+50466.762
L194	+79088.534	+50568.290	R103	+80878.115	+50894.119	XL10	+80005.836	+50466.423
L195	+79069.358	+50565.427	R104	+80875.466	+50895.511	XR1	+80916.501	+51104.855
L196	+79063.210	+50564.169	R105	+80806.751	+50925.529	XR2	+80916.862	+51101.880
L197	+79054.740	+50562.175	R106	+80803.966	+50926.640	XR3	+80923.306	+51056.052
L198	+79047.382	+50560.282	R107	+80801.381	+50927.576	XR4	+80924.999	+51054.774
L199	+79032.385	+50555.690	R108	+80798.515	+50928.448	XR5	+80925.669	+51054.868
L200	+79024.826	+50553.497	R109	+80770.355	+50935.433	XR6	+80927.389	+51053.595
L201	+79009.699	+50547.540	R110	+80767.407	+50935.947	C13	+80918.855	+51219.766
L202	+78996.476	+50542.477	R111	+80752.943	+50937.433	C17	+80945.030	+51475.570
L203	+78967.817	+50529.871	R112	+80721.913	+50938.880	C18	+80932.630	+51377.950
L204	+78938.137	+50517.491	R113	+80705.360	+50938.418	C20	+80932.250	+51181.640
L205	+78911.150	+50505.603	R114	+80689.749	+50936.102	C79	+80916.684	+51103.366
L206	+78880.509	+50492.264	R115	+80658.682	+50937.629	C80	+80923.514	+51054.566
L207	+78851.594	+50479.267	R116	+80653.513	+50937.883	C81	+80927.154	+51055.076
L208	+78848.845	+50478.067	R117	+80607.436	+50924.698	C136	+80876.841	+50894.911
L209	+78840.991	+50474.739	R118	+80582.604	+50902.367	C152	+80805.376	+50926.129
L210	+78838.166	+50473.749	R119	+80555.232	+50877.752	C161	+80799.971	+50928.087
L211	+78796.466	+50462.053	R120	+80499.446	+50827.584	C164	+80768.899	+50935.794
L212	+78775.307	+50459.249	R121	+80497.211	+50825.583	C196	+80601.921	+50876.981
L213	+78759.265	+50457.581	R122	+80453.991	+50787.089	C352	+80075.159	+50492.527
L214	+78737.727	+50456.642	R123	+80451.699	+50785.155	C354	+80007.322	+50466.220
L215	+78716.071	+50457.451	R124	+80440.463	+50776.177	C467	+79092.898	+50591.391
L216	+78700.025	+50459.856	R125	+80438.221	+50774.190	C484	+79012.335	+50566.826
L217	+78633.963	+50469.182	R126	+80405.164	+50741.728	C492	+78991.448	+50567.460
L218	+78607.425	+50472.923	R127	+80402.975	+50739.678	C493	+79012.036	+50564.642
L219	+78564.452	+50478.572	R128	+80374.515	+50714.265	C496	+78990.177	+50558.177
L220	+78527.821	+50484.103	R129	+80372.278	+50712.266	C501	+78912.495	+50524.491
L221	+78488.895	+50489.687	R130	+80305.481	+50652.524	C520	+78850.226	+50478.652
L222	+78456.974	+50494.155	R131	+80303.264	+50650.503	C521	+78839.419	+50474.184
L223	+78441.376	+50496.110	R132	+80251.809	+50602.666			
L224	+78430.227	+50497.341	R133	+80249.396	+50601.675			
L225	+78415.338	+50498.702	R134	+80203.406	+50560.738			
L226	+78397.431	+50499.805	R135	+80186.627	+50546.445			
L227	+78388.489	+50500.096	R136	+80161.307	+50526.626			