

**THE PROVINCE OF
GAUTENG**



**DIE PROVINSIE
GAUTENG**

Provincial Gazette Extraordinary Buitengewone Provinsiale Koerant

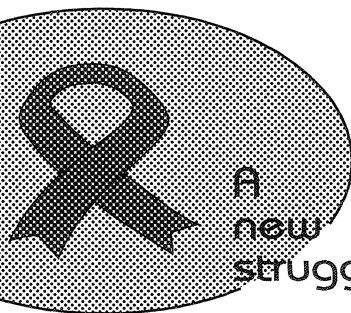
Vol. 18

PRETORIA, 24 JULY 2012
JULIE 2012

No. 211

We all have the power to prevent AIDS

AIDS
affects
us all



A
new
struggle

**AIDS
HELPLINE**

0800 012 322

DEPARTMENT OF HEALTH

Prevention is the cure

N.B. The Government Printing Works will not be held responsible for the quality of "Hard Copies" or "Electronic Files" submitted for publication purposes



IMPORTANT NOTICE

The Government Printing Works will not be held responsible for faxed documents not received due to errors on the fax machine or faxes received which are unclear or incomplete. Please be advised that an "OK" slip, received from a fax machine, will not be accepted as proof that documents were received by the GPW for printing. If documents are faxed to the GPW it will be the sender's responsibility to phone and confirm that the documents were received in good order.

Furthermore the Government Printing Works will also not be held responsible for cancellations and amendments which have not been done on original documents received from clients.

CONTENTS • INHOUD*No.**Page
No. Gazette
 No.***GENERAL NOTICE**

1856	Gauteng Transport Infrastructure Act (8/2001): Proclamation of the increase and reduction of the width of portions of the provincial railway line in respect of the Gautrain Rapid Rail link between Pretoria, Johannesburg and the OR Tambo International Airport: District Kempton Park	3	211
------	---	---	-----

GENERAL NOTICE

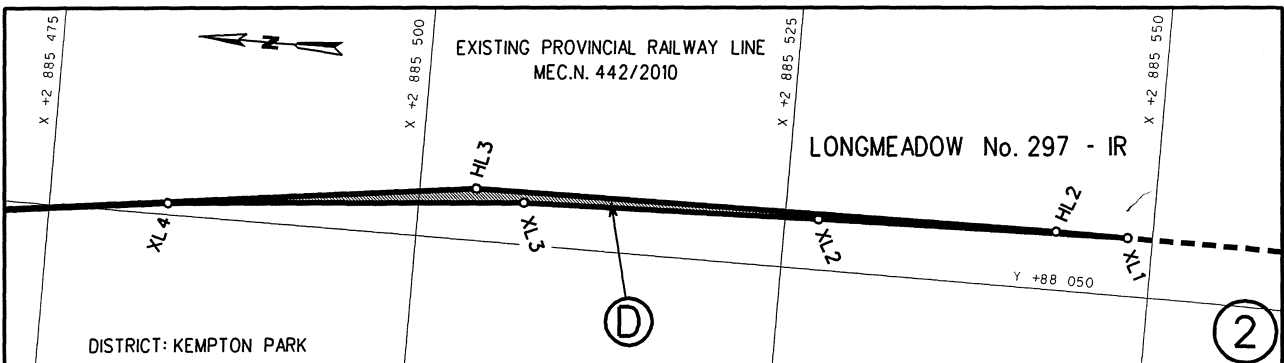
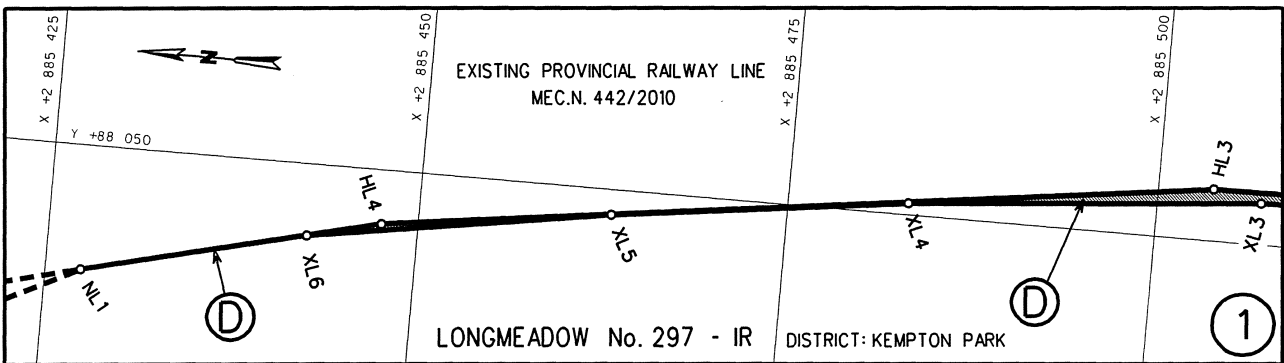
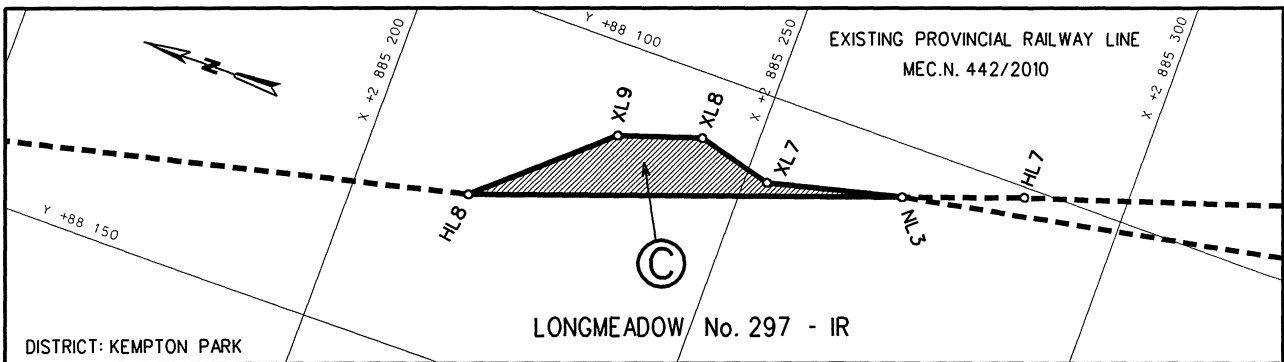
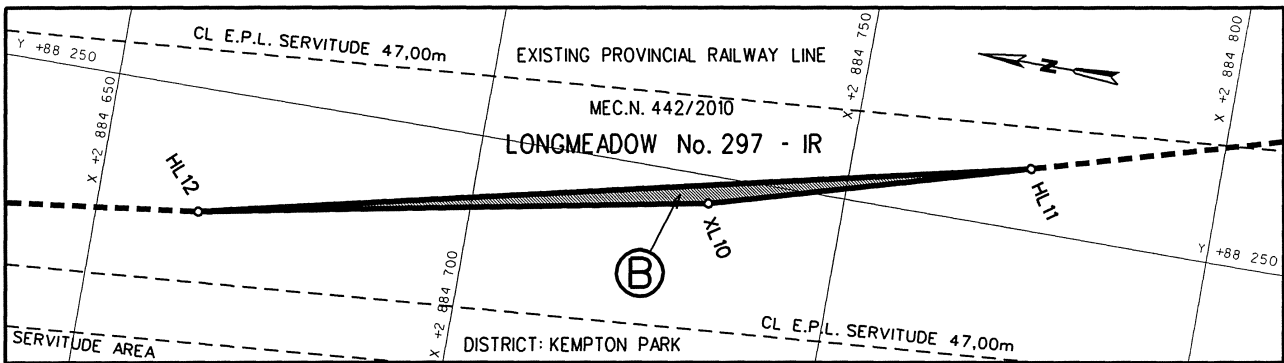
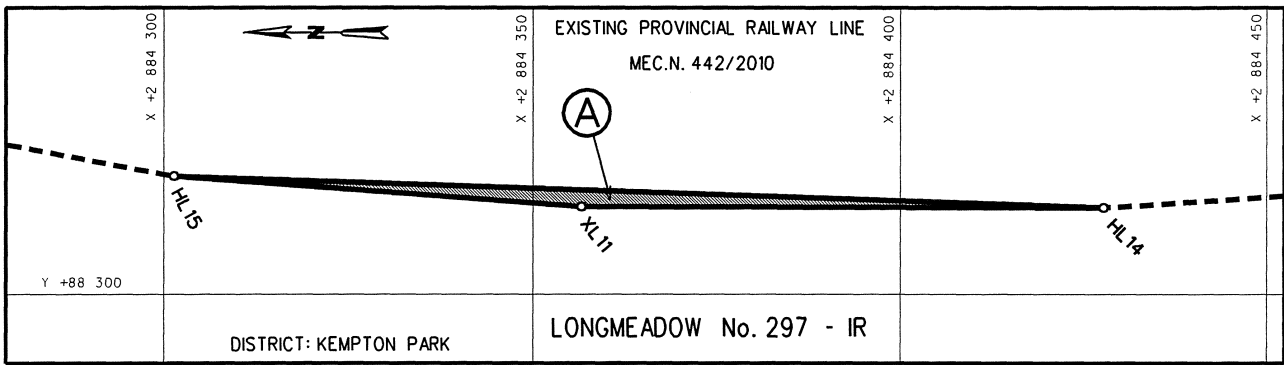
NOTICE 1856 OF 2012

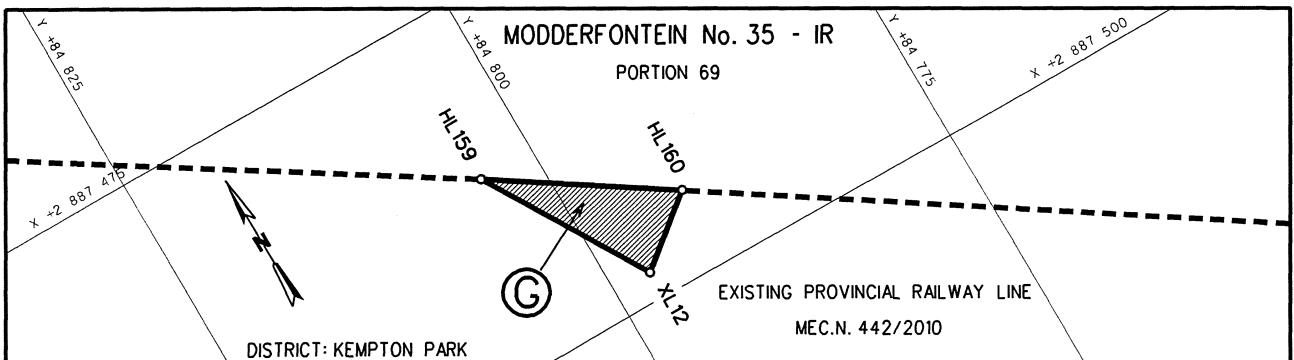
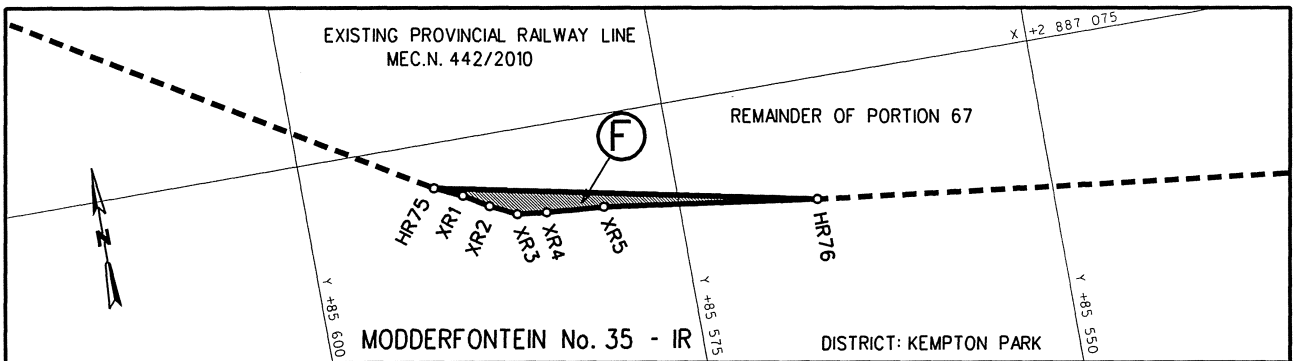
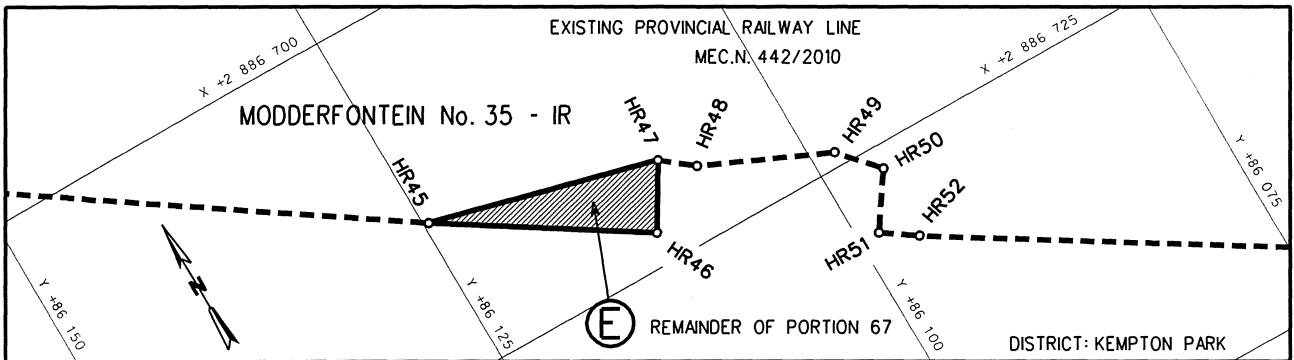
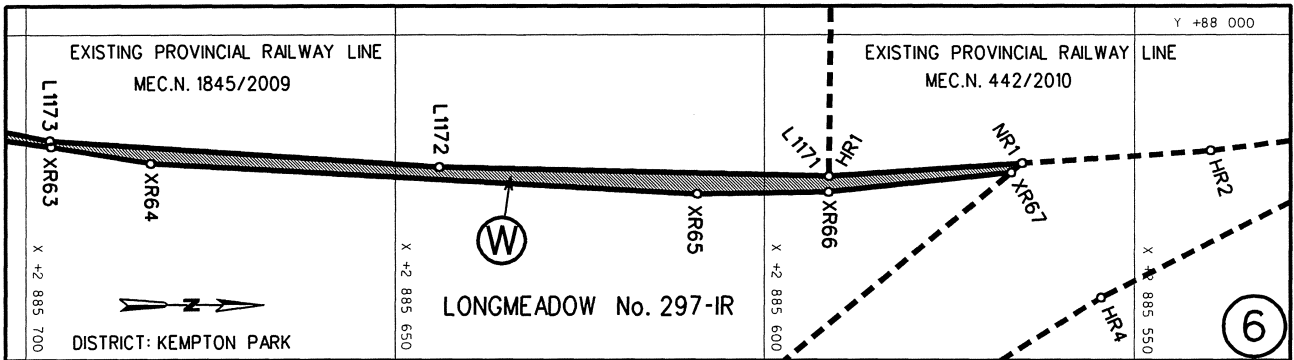
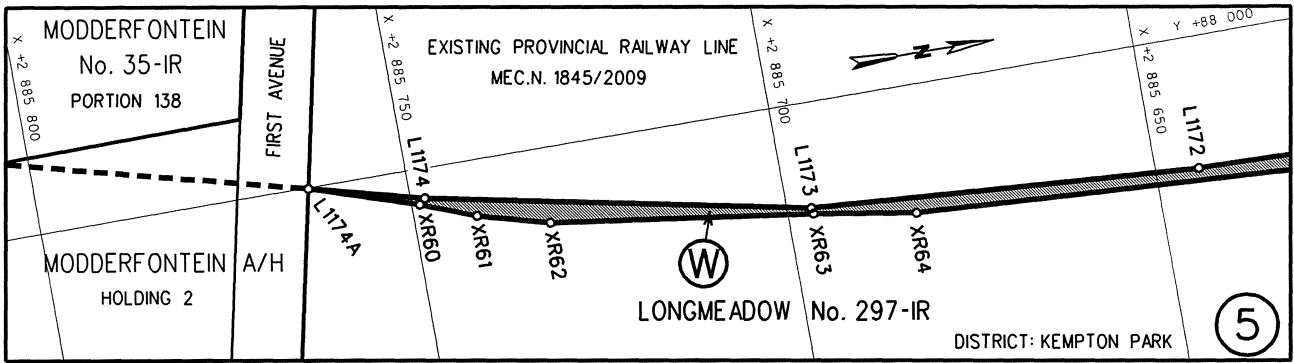
PROCLAMATION OF THE INCREASE AND REDUCTION OF THE WIDTH OF PORTIONS OF THE PROVINCIAL RAILWAY LINE IN RESPECT OF THE GAUTRAIN RAPID RAIL LINK BETWEEN PRETORIA, JOHANNESBURG AND THE O R TAMBO INTERNATIONAL AIRPORT : DISTRICT KEMPTON PARK

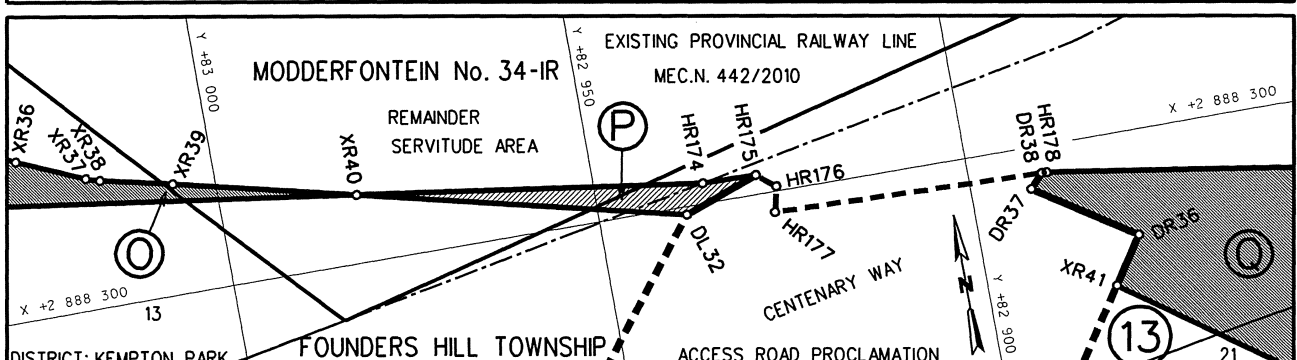
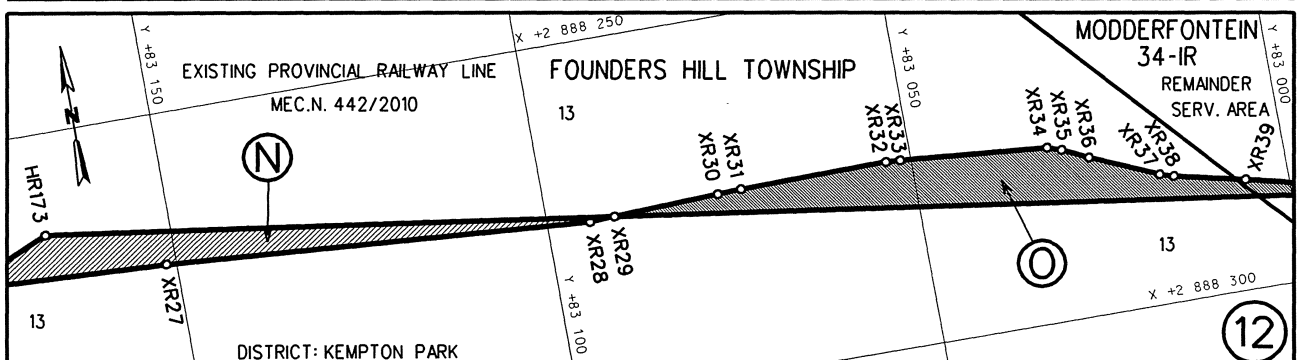
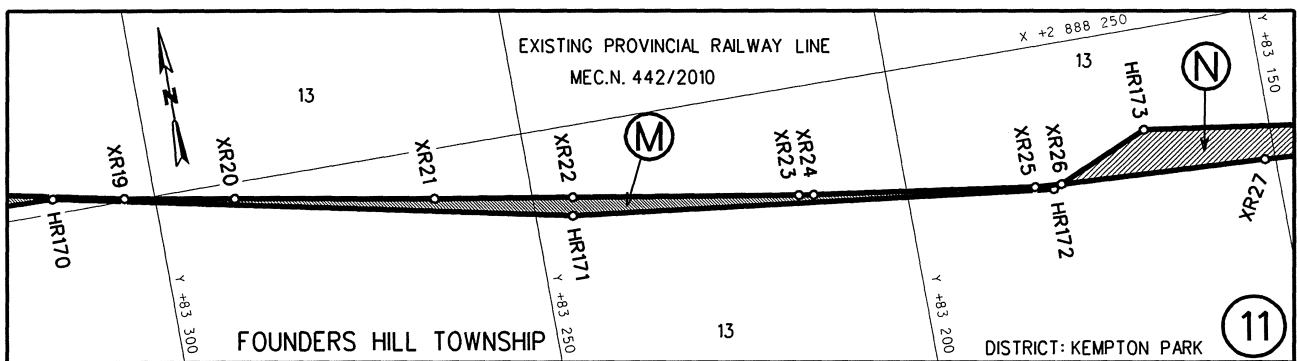
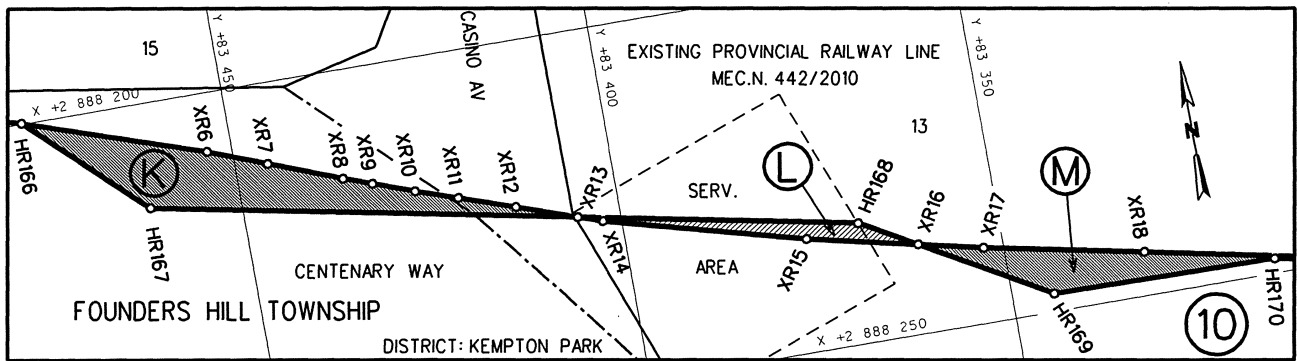
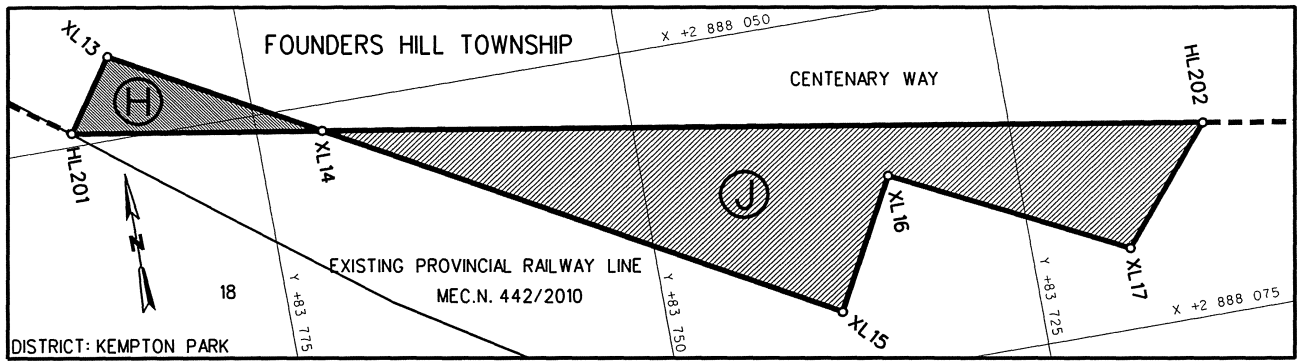
In terms of section 11(2) of the Gauteng Transport Infrastructure Act, 2001 (Act No. 8 of 2001) the MEC hereby proclaims the increase and reduction respectively of the width of portions of the provincial railway line on the land as described and indicated on the accompanying sketch plan.

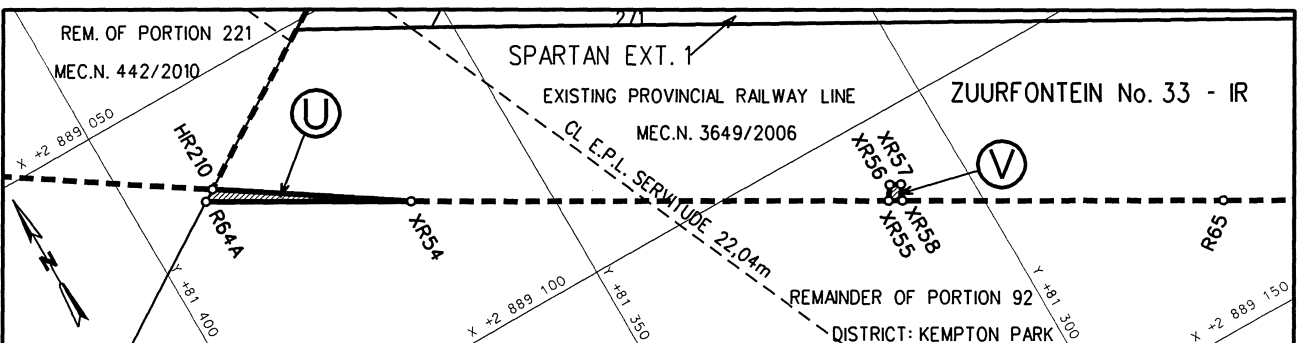
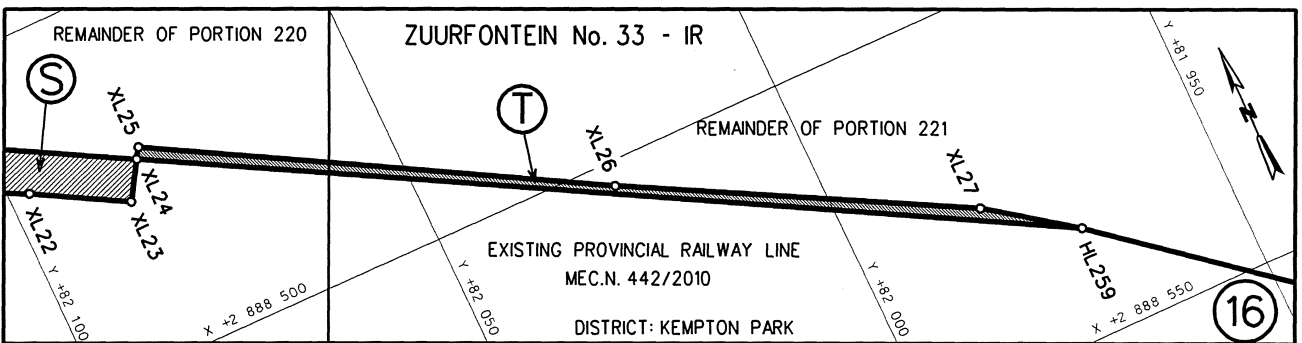
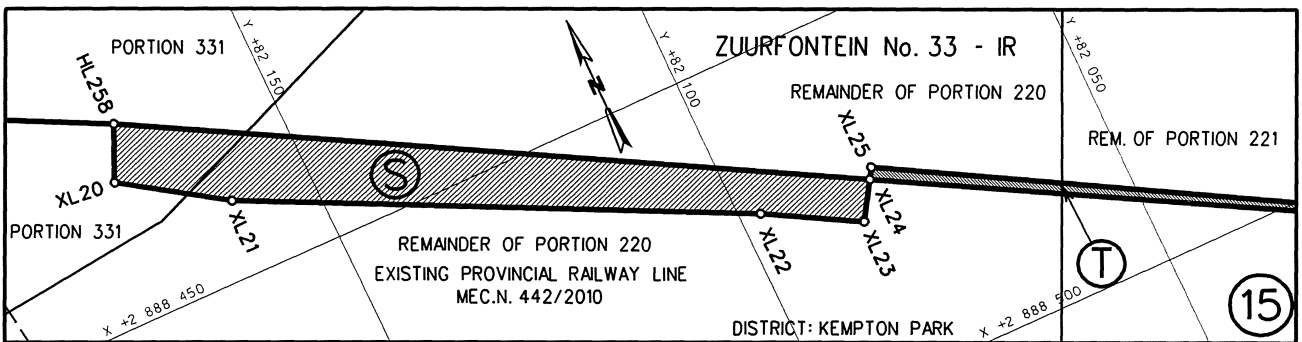
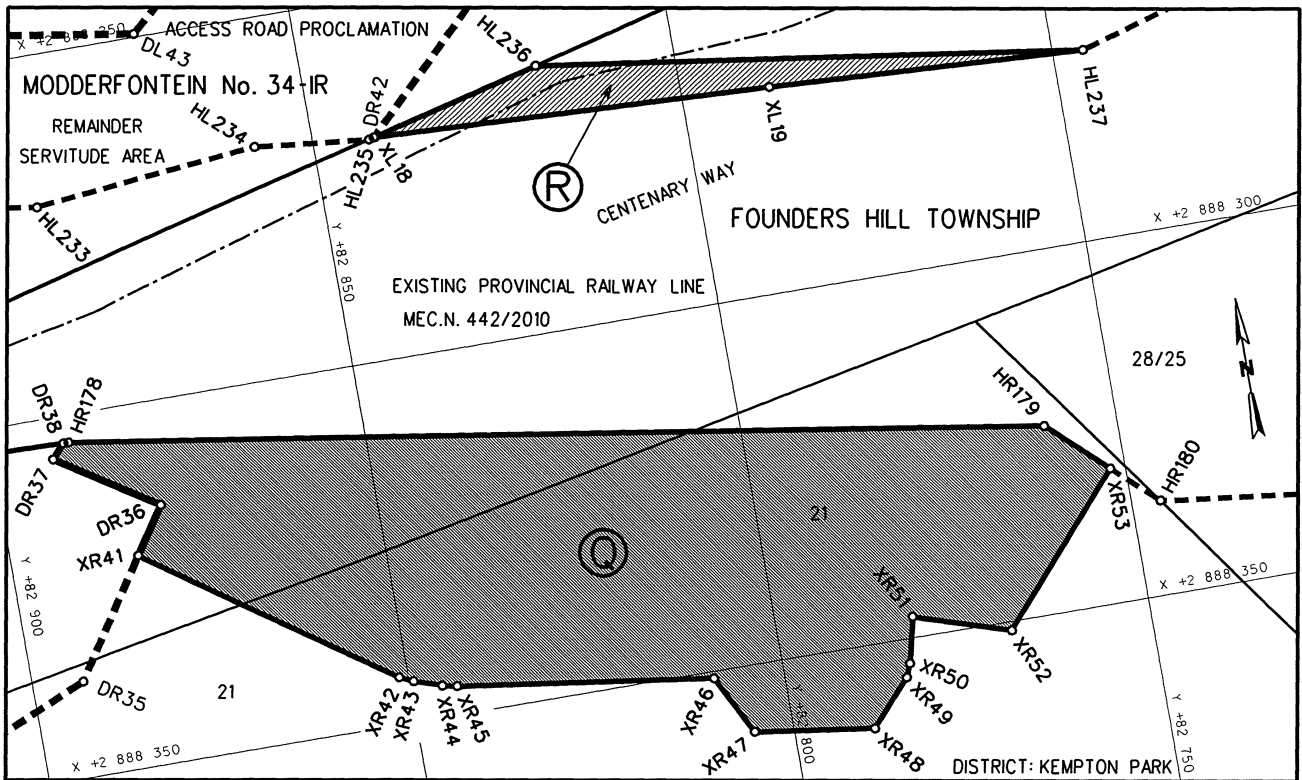
In terms of section 23(6) of the aforementioned act it is hereby stated that plans GRP 03/38/12 Exp – 15 Exp and 19 Exp which indicate the land affected by the increase and reduction of the width of portions of the railway line in detail, are available for inspection at the office of the Department of Roads and Transport, First Floor, South Tower, Sage Life Building, 41 Simmonds Street, Johannesburg, during office hours.

Reference: 2/1/7/8 - Gautrain



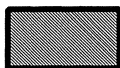




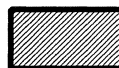


REFERENCE

PROCLAMATION OF THE INCREASE IN WIDTH OF THE RAILWAY LINE



PROCLAMATION OF THE REDUCTION OF THE WIDTH OF THE RAILWAY LINE



EXISTING RAILWAY LINE



THE FIGURES : (A) HL15, HL14, XL11, HL15. (B) HL12, HL11, XL10, HL12. (C) HL8, XL9, XL8, XL7, NL3, HL8. (D) NL1, HL4, HL3, HL2, XL1 - XL6, NL1. (E) HR45, HR47, HR46, HR45. (F) HR75, HR76, XR5 - XR1, HR75. (G) HL159, HL160, XL12, HL159. (H) HL201, XL13, XL14, HL201. (J) XL14, HL202, XL17, XL16, XL15, XL14. (K) HR166, XR6 - XR13, HR167, HR166. (L) XR13, HR168, XR16 - XR13. (M) XR16 - XR26, HR172 - HR169, XR16. (N) XR26, HR173, XR29 - XR26. (O) XR29 - XR40, XR29. (P) XR40, HR174, HR175, DL32, XR40. (Q) DR38, HR178, HR179, XR53 - XR41, DR36, DR37, DR38. (R) XL18, HL236, HL237, XL19, XL18. (S) HL258, XL24 - XL20, HL258. (T) XL24 - XL27, HL259, XL24. (U) HR210, XR54, R64A, HR210. (V) XR55, XR56, XR57, XR58, XR55. (W) L1174A, L1174 - L1172, HR1, NR1, XR67 - XR60, L1174A.

REPRESENT THE PROCLAMATION OF THE INCREASE AND THE REDUCTION RESPECTIVELY OF THE WIDTH OF THE RAILWAY LINE OVER THE FARM LONGMEADOW 297-IR, THE REMAINDER OF PORTION 67 AND PORTION 69 OF THE FARM MODDERFONTEIN 35-IR, PORTIONS OF CENTENARY WAY, ERF 13 AND ERF 21 IN FOUNDERS HILL, THE REMAINDER OF THE FARM MODDERFONTEIN 34-IR, PORTION 331, THE REMAINDERS OF PORTIONS 220, 221 AND 92 OF THE FARM ZUURFONTEIN 33-IR AS INTENDED BY THE PUBLICATION THEREOF IN THE PROVINCIAL GAZETTE AND SHOWN IN DETAIL ON PLANS GRP 03/38/12Exp. - 15Exp AND 19Exp.

FILE NO. 2/1/7/8-GAUTRAIN

CO-ORDINATE LIST WG 29° CONST. Y= +/- 0.00 X= +2 800 000.00

XL1	+88045.983	+85548.303	XR20	+83289.443	+88252.246	HL15	+88283.705	+84301.398
XL2	+88046.501	+85527.272	XR21	+83263.092	+88256.903	HL159	+84803.965	+87486.746
XL3	+88047.125	+85507.133	XR22	+83244.641	+88259.966	HL160	+84792.541	+87494.250
XL4	+88049.213	+85483.128	XR23	+83214.352	+88264.994	HL201	+83787.344	+88049.087
XL5	+88051.748	+85463.067	XR24	+83212.386	+88265.297	HL202	+83711.962	+88061.586
XL6	+88054.965	+85442.580	XR25	+83182.992	+88269.358	HL236	+82818.741	+88263.254
XL7	+88111.387	+85253.040	XR26	+83179.344	+88269.597	HL237	+82745.847	+88273.659
XL8	+88108.604	+85242.697	XR27	+83151.391	+88270.972	HL258	+82170.881	+88423.074
XL9	+88112.232	+85231.715	XR28	+83094.205	+88275.105	HL259	+81970.845	+88535.086
XL10	+88253.798	+84731.957	XR29	+83090.780	+88274.959			
XL11	+88287.940	+84356.589	XR30	+83076.421	+88274.346	HR1	+87980.494	+85591.294
XL12	+84797.268	+87498.080	XR31	+83073.225	+88274.228	HR45	+86124.645	+86714.441
XL13	+83784.005	+88044.217	XR32	+83053.414	+88273.877	HR46	+86111.563	+86722.770
XL14	+83770.656	+88051.854	XR33	+83051.448	+88273.987	HR47	+86109.008	+86718.478
XL15	+83738.223	+88070.409	XR34	+83031.721	+88275.670	HR75	+85591.198	+87078.065
XL16	+83733.604	+88061.566	XR35	+83029.831	+88276.315	HR76	+85565.724	+87083.326
XL17	+83718.336	+88069.391	XR36	+83026.299	+88278.017	HR166	+83477.555	+88199.912
XL18	+82841.876	+88269.358	XR37	+83017.251	+88281.983	HR167	+83462.229	+88214.662
XL19	+82788.126	+88271.564	XR38	+83015.353	+88282.575	HR168	+83368.616	+88233.300
XL20	+82174.185	+88430.429	XR39	+83005.739	+88284.744	HR169	+83344.343	+88247.519
XL21	+82160.878	+88439.384	XR40	+82981.676	+88290.571	HR170	+83313.836	+88247.956
XL22	+82097.223	+88471.018	XR41	+82882.740	+88320.878	HR171	+83245.051	+88262.508
XL23	+82085.101	+88477.864	XR42	+82851.213	+88343.504	HR172	+83180.484	+88270.108
XL24	+82081.980	+88472.855	XR43	+82849.436	+88344.384	HR173	+83166.974	+88264.056
XL25	+82081.092	+88471.430	XR44	+82845.729	+88345.623	HR174	+82935.283	+88297.210
XL26	+82025.255	+88503.328	XR45	+82843.784	+88346.068	HR175	+82928.071	+88297.309
XL27	+81982.146	+88526.805	XR46	+82809.414	+88350.946	HR178	+82889.461	+88303.767
			XR47	+82805.258	+88359.210	HR179	+82759.886	+88324.064
			XR48	+82789.320	+88361.492	HR210	+81388.952	+89064.356
			XR49	+82783.937	+88355.258			
XR1	+85589.360	+87078.920	XR50	+82783.176	+88353.434	NL1	+88058.601	+85427.465
XR2	+85587.696	+87079.938	XR51	+82781.704	+88347.121	NL3	+88106.963	+85270.869
XR3	+85585.969	+87080.800	XR52	+82769.042	+88351.225			
XR4	+85583.972	+87081.029	XR53	+82752.033	+88331.444	NR1	+87982.252	+85565.349
XR5	+85580.085	+87081.333	XR54	+81366.841	+89079.061			
XR6	+83453.357	+88208.239	XR55	+81311.054	+89111.116	DL32	+82938.120	+88301.118
XR7	+83445.644	+88211.295	XR56	+81309.850	+89109.258			
XR8	+83436.071	+88215.087	XR57	+81308.501	+89109.991	DR36	+82878.565	+88314.491
XR9	+83432.323	+88216.486	XR58	+81309.454	+89112.036	DR37	+82891.917	+88305.697
XR10	+83426.859	+88218.525				DR38	+82890.167	+88303.749
XR11	+83421.289	+88220.475	HL2	+88045.982	+85543.358			
XR12	+83413.831	+88223.085	HL3	+88046.442	+85503.828	L1172	+87981.740	+885644.099
XR13	+83405.865	+88225.884	HL4	+88053.743	+85447.513	L1173	+87985.371	+885696.695
XR14	+83402.568	+88227.042	HL8	+88126.786	+85215.277	L1174	+87995.841	+885748.030
XR15	+83375.832	+88234.292	HL11	+88241.534	+84774.122	L1174A	+87999.875	+885763.248
XR16	+83361.191	+88237.650	HL12	+88266.915	+84663.864			
XR17	+83352.656	+88239.607	HL14	+88288.102	+84427.613	R64A	+81390.584	+89065.415
XR18	+83331.273	+88243.959						
XR19	+83304.089	+88249.655						

5/5