

**THE PROVINCE OF
GAUTENG**



**DIE PROVINSIE
GAUTENG**

Provincial Gazette Extraordinary Buitengewone Provinsiale Koerant

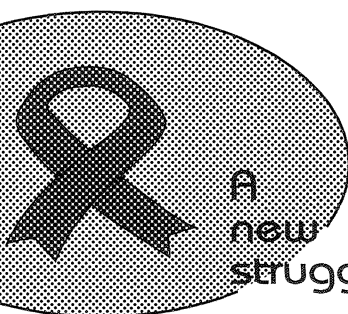
Vol. 18

PRETORIA, 16 NOVEMBER 2012

No. 341

We all have the power to prevent AIDS

AIDS
affects
us all



A
new
struggle

**AIDS
HELPLINE**

0800 012 322

DEPARTMENT OF HEALTH

Prevention is the cure

N.B. The Government Printing Works will not be held responsible for the quality of "Hard Copies" or "Electronic Files" submitted for publication purposes



9771682452005

IMPORTANT NOTICE

The Government Printing Works will not be held responsible for faxed documents not received due to errors on the fax machine or faxes received which are unclear or incomplete. Please be advised that an "OK" slip, received from a fax machine, will not be accepted as proof that documents were received by the GPW for printing. If documents are faxed to the GPW it will be the sender's responsibility to phone and confirm that the documents were received in good order.

Furthermore the Government Printing Works will also not be held responsible for cancellations and amendments which have not been done on original documents received from clients.

CONTENTS • INHOUD*No.**Page
No. Gazette
 No.***GENERAL NOTICE**

3124	Gauteng Transport Infrastructure Act (8/2001): Proclamation of the widening of Provincial Road P4-1 (K133) between Nederveen Road (R103) and Leondale Fordick Road (R554) to Barry Marais Road: District Ekurhuleni.....	3	341
------	--	---	-----

GENERAL NOTICE

NOTICE 3124 OF 2012

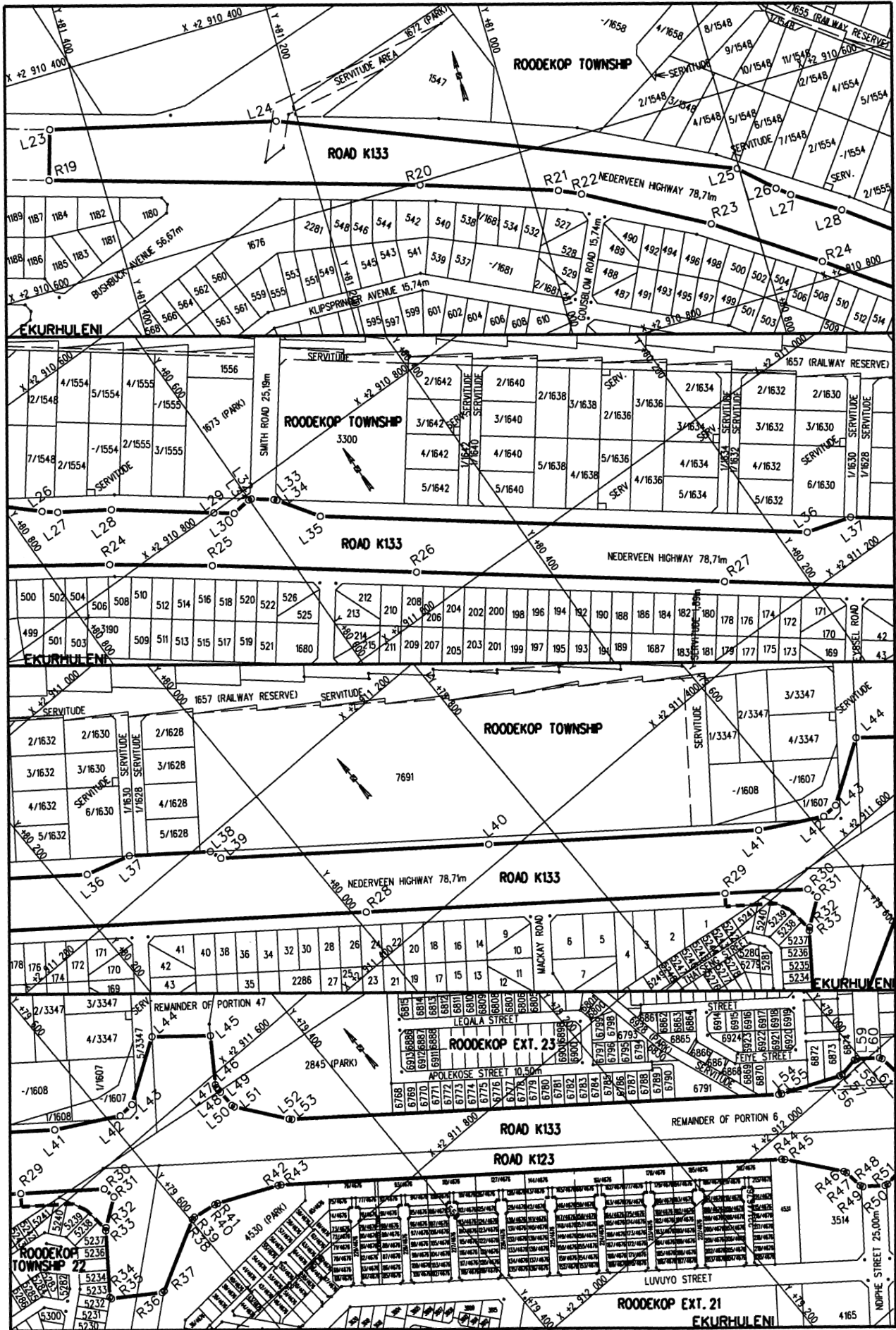
PROCLAMATION OF THE WIDENING OF PROVINCIAL ROAD P4-1 (K133) BETWEEN NEDERVEEN ROAD (R103) AND LEONDALE FORDICK ROAD (R554) TO BARRY MARAIS ROAD: DISTRICT EKURHULENI

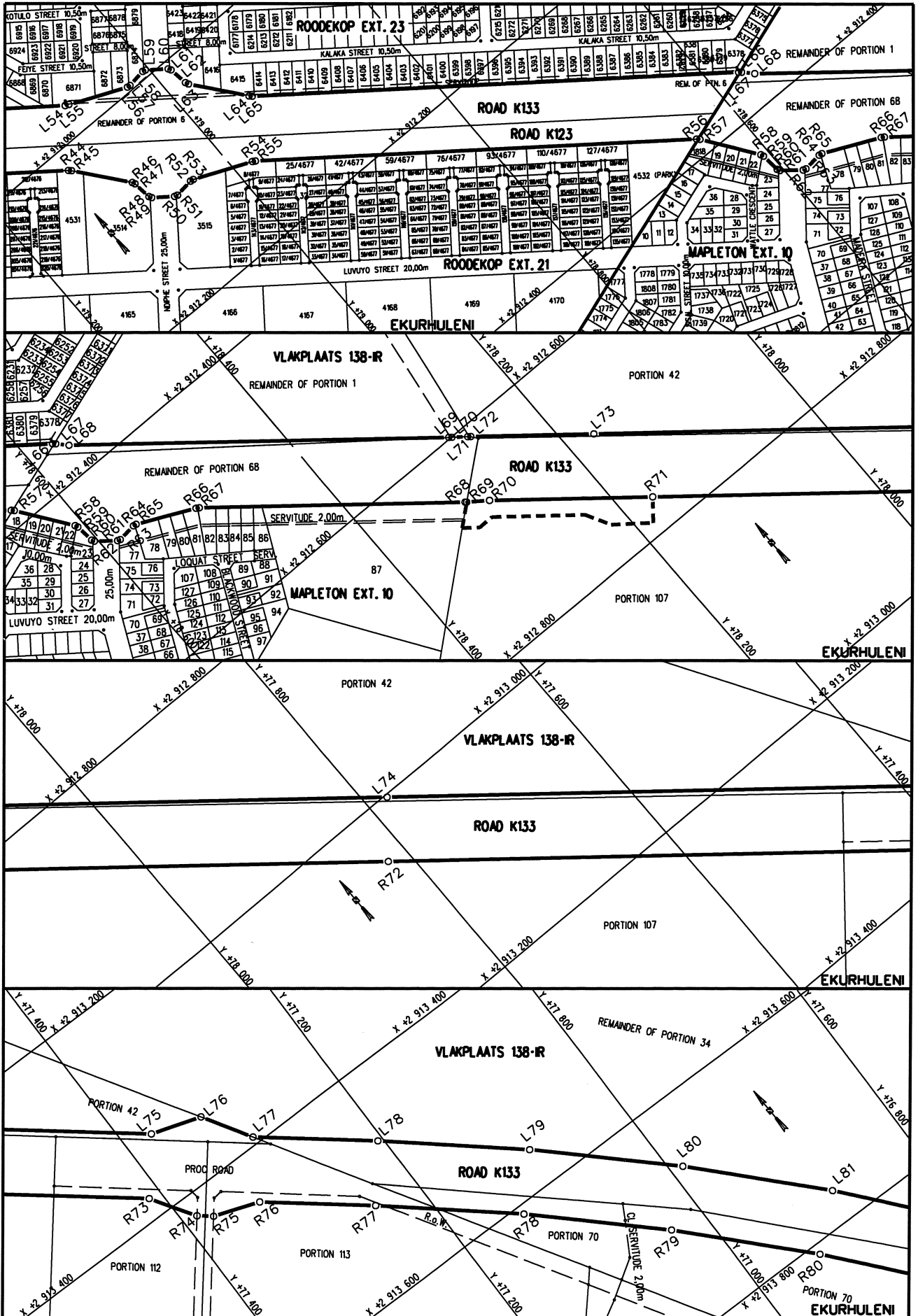
In terms of section 11(2) of the Gauteng Transport Infrastructure Act, 2001 (Act No. 8 of 2001) the MEC for Roads and Transport hereby proclaims the widening of provincial road P4-1 (K133) between Nederveen Road (R103) and Leondale Fordick Road (R554) to Barry Marais Road, as indicated on the accompanying sketch plans.

In terms of section 23(6) of the aforementioned act, it is hereby declared that boundary beacons, demarcating the widening of the road in question have been placed on the land and that plans PRS 75/42/33-39V indicating the land encroached upon by the said road in detail are available for inspection by any interested person in the Plan Room of the Department of Roads and Transport, Sage Life Building, 41 Simmonds Street, Johannesburg.

Reference: 2/1/1/2/3/1-P4-1 (K133)

MEC Resolution 007 Dated 09 November 2012





REFERENCE / VERWYSINGS

GEPROKLAAMEERDE PAD
PROCLAIMED ROAD



DIE FIGUUR : L23-L46, 1943, L47, 1010, L48, L49, 1022, L51, L52, 1021, L53, L54,
THE FIGURE : 1020, L55, L56, 1019, L57, L58, 1018, L59, L60, 1017, L61, L62, 1016,
L63, L64, 1015, L65, L66, 1014, L67, L69, 1651, L70, L71, 1650,
L72-L114, R115-R69, 646, R68, R67, 645, R66, R65, 644, R64, R63, 643,
R62, R61, 642, R60, R59, 641, R58, R57, 640, R56, R55, 2, R54, R53,
2482, R52, R51, 2484, R49, 2459, R48, R47, 2458, R46, R45, 2457, R44,
R43, 2456, R42, R41, 2455, R40, R39, 2454, R38, R37, 2465, R36, R35,
332, R34, R33, 321, R32-R19, L23.

VERTEENWOORDIG DIE PROKLAMASIE VAN DIE VERBREDING VAN DIE BETROKKE GEDEELTE VAN PROVINSIALE PAD K133 OOR NEDERVEEN HOOFWEG(K133), PROVINSIALE PAD K123(LEONDALE ROAD). RESTANT VAN GEDEELTES 47 & 6 VAN DIE PLAAS ROOIKOP 140-IR. ERWE 5239, 5240 & 5241 IN ROODEKOP UITBREIDING 22. GEDEELTES 42, 107, 112, 113, 70, 127, 57, 103, 56, 75, 55, 54, 76, 77, 65, 78, 66, 79, 81, 83 & 85. DIE RESTANT VAN GEDEELTES 68, 1, 34, 48, 47 & 46. PROVINSIALE PAAIE K155 & P140-1 VAN DIE PLAAS VLAKPLAATS 138-IR SOOS BEDOEL BY DIE AFKONDIGING DAARVAN IN DIE PROVINSIALE KOERANT EN IN DETAIL GETOON OP PLANNE PRS 75/42/33V-39V.

REPRESENTS THE PROCLAMATION OF THE WIDENING OF THE PORTION CONCERNED OF PROVINCIAL ROAD K133 OVER NEDERVEEN HIGHWAY(K133), PROVINCIAL ROAD K123(LEONDALE ROAD). REMAINDER OF PORTIONS 47 & 6 OF THE FARM ROOIKOP 140-IR. ERVEN 5239, 5240 & 5241 IN ROODEKOP EXTENSION 22. PORTIONS 42, 107, 112, 113, 70, 127, 57, 103, 56, 75, 55, 54, 76, 77, 65, 78, 66, 79, 81, 83 & 85. THE REMAINDER OF PORTIONS 68, 1, 34, 48, 47 & 46. PROVINCIAL ROADS K155 & P140-1 OF THE FARM VLAKPLAATS 138-IR AS INTENDED BY THE PUBLICATION THEREOF IN THE PROVINCIAL GAZETTE AND SHOWN IN DETAIL ON PLANS PRS 75/42/33V-39V.

BUNDEL NR. / FILE NO. 2/1/4/6/1-K133(1)

KOÖRDINATE LYS/CO-ORDINATE LIST WC 29⁰ KONST./CONST. Y= +/- 0.00 X= +2 900 000.00

L23	+81434.996	+10451.221	L50	+79498.786	+11633.880	L77	+77298.320	+13392.855
L24	+81220.947	+10504.992	L51	+79497.832	+11636.567	L78	+77204.796	+13468.542
L25	+80801.944	+10673.734	L52	+79464.208	+11680.043	L79	+77094.593	+13562.581
L26	+80770.927	+10702.394	L53	+79462.097	+11682.139	L80	+76988.201	+13663.464
L27	+80758.958	+10711.894	L54	+79083.363	+11970.481	L81	+76888.627	+13768.312
L28	+80715.203	+10740.030	L55	+79080.792	+11971.982	L82	+76793.959	+13879.031
L29	+80635.500	+10800.424	L56	+79026.728	+11995.208	L83	+76730.397	+13957.437
L30	+80619.560	+10812.503	L57	+79023.864	+11995.599	L84	+76679.177	+14004.740
L31	+80600.545	+10810.098	L58	+79005.806	+11993.151	L85	+76659.444	+14013.202
L32	+80597.861	+10810.815	L59	+79003.127	+11993.859	L86	+76610.490	+13978.311
L33	+80580.165	+10824.206	L60	+78985.623	+12007.191	L87	+76567.087	+14031.850
L34	+80578.108	+10826.339	L61	+78984.229	+12009.586	L88	+76603.397	+14082.337
L35	+80551.812	+10863.838	L62	+78981.791	+12027.634	L89	+76597.941	+14104.948
L36	+80174.429	+11150.976	L63	+78980.652	+12030.291	L90	+76572.963	+14151.639
L37	+80131.598	+11163.663	L64	+78943.868	+12076.229	L91	+76421.826	+14338.073
L38	+80068.603	+11211.335	L65	+78941.737	+12078.309	L92	+76383.626	+14361.746
L39	+80064.778	+11222.846	L66	+78572.913	+12359.111	L93	+76370.991	+14377.029
L40	+79855.160	+11381.683	L67	+78570.684	+12361.105	L94	+76350.224	+14431.954
L41	+79645.541	+11540.520	L68	+78561.874	+12370.328	L95	+76332.274	+14458.009
L42	+79588.492	+11571.202	L69	+78280.515	+12598.526	L96	+76274.529	+14550.678
L43	+79572.888	+11570.479	L70	+78278.164	+12600.390	L97	+76237.143	+14621.405
L44	+79515.790	+11533.446	L71	+78266.016	+12609.802	L98	+76223.980	+14646.308
L45	+79471.874	+11569.316	L72	+78263.664	+12611.664	L99	+76179.553	+14747.165
L46	+79498.550	+11608.415	L73	+78173.152	+12684.884	L100	+76136.122	+14871.571
L47	+79499.353	+11611.153	L74	+77780.594	+13002.568	L101	+76056.492	+15135.687
L48	+79499.272	+11614.031	L75	+77373.267	+13332.205	L102	+76047.832	+15164.410
L49	+79499.194	+11617.030	L76	+77326.336	+13347.337	L102	+76047.832	+15164.410

KOÖRDINATE LYS/CO-ORDINATE LIST WG 29 ⁰ KONST./CONST. Y= +/- 0.00 X= +2 900 000.00								
L103	+76037.729	+15197.920	R44	+79120.954	+12019.847	R80	+76934.679	+13809.824
L104	+75913.943	+15608.492	R45	+79118.823	+12021.927	R81	+76842.785	+13917.256
L105	+75902.430	+15647.241	R46	+79082.049	+12067.865	R82	+76761.556	+14017.455
L106	+75877.505	+15735.346	R47	+79080.910	+12070.522	R83	+76730.910	+14071.137
L107	+75826.283	+15935.164	R48	+79078.463	+12088.569	R84	+76731.751	+14085.980
L108	+75800.620	+15981.056	R49	+79077.068	+12090.965	R85	+76767.699	+14136.915
L109	+75750.964	+15997.651	R50	+79059.565	+12104.297	R86	+76723.824	+14191.036
L110	+75746.373	+16024.418	R51	+79056.885	+12105.004	R87	+76675.075	+14155.892
L111	+75789.406	+16038.520	R52	+79038.838	+12102.557	R88	+76661.639	+14156.586
L112	+75795.623	+16082.731	R53	+79035.973	+12102.947	R89	+76616.717	+14196.121
L113	+75728.127	+16410.860	R54	+78981.869	+12126.139	R90	+76460.818	+14388.428
L114	+75725.561	+16532.845	R55	+78979.297	+12127.639	R91	+76446.503	+14406.371
R19	+81449.116	+10497.510	R56	+78644.283	+12382.691	R92	+76426.668	+14435.558
R20	+81102.653	+10602.651	R57	+78642.216	+12384.819	R93	+76382.598	+14494.279
R21	+80974.803	+10645.179	R58	+78607.394	+12433.391	R94	+76328.284	+14581.570
R22	+80954.168	+10654.816	R59	+78606.364	+12436.102	R95	+76314.400	+14608.399
R23	+80841.170	+10717.535	R60	+78604.466	+12454.218	R96	+76279.782	+14673.328
R24	+80747.212	+10782.272	R61	+78603.144	+12456.654	R97	+76237.154	+14770.100
R25	+80666.301	+10841.072	R62	+78586.046	+12470.496	R98	+76195.483	+14889.468
R26	+80506.896	+10961.861	R63	+78583.388	+12471.283	R99	+76193.044	+14897.559
R27	+80267.787	+11143.043	R64	+78565.272	+12469.377	R100	+76115.853	+15153.584
R28	+79988.827	+11354.423	R65	+78562.420	+12469.853	R101	+76107.193	+15182.307
R29	+79709.867	+11565.802	R66	+78509.060	+12494.707	R102	+76094.203	+15225.392
R30	+79645.308	+11614.722	R67	+78506.534	+12496.284	R103	+75973.304	+15626.389
R31	+79642.966	+11626.533	R68	+78308.646	+12656.526	R104	+75969.257	+15639.881
R32	+79667.706	+11644.053	R69	+78306.264	+12658.348	R105	+75937.315	+15751.679
R33	+79669.822	+11646.126	R70	+78289.889	+12670.171	R106	+75922.954	+15805.447
R34	+79707.778	+11697.434	R71	+78169.401	+12767.678	R107	+75914.041	+15840.096
R35	+79707.420	+11699.469	R72	+77819.597	+13050.763	R108	+75912.936	+15881.773
R36	+79665.625	+11727.202	R73	+77412.269	+13380.400	R109	+75906.518	+15916.953
R37	+79663.056	+11727.318	R74	+77386.377	+13420.650	R110	+75886.356	+15955.069
R38	+79598.345	+11692.296	R75	+77374.166	+13430.533	R111	+75863.681	+16059.590
R39	+79595.546	+11691.830	R76	+77330.648	+13446.453	R112	+75792.934	+16403.525
R40	+79572.705	+11695.646	R77	+77243.799	+13516.738	R113	+75780.997	+16461.552
R41	+79569.854	+11696.500	R78	+77136.052	+13608.680	R114	+75776.766	+16482.122
R42	+79513.388	+11721.516	R79	+77033.431	+13705.916	R115	+75756.403	+16539.189
R43	+79510.823	+11723.032						

5/5