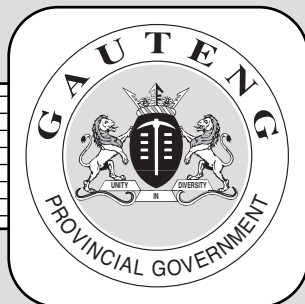


**THE PROVINCE OF  
GAUTENG**



**DIE PROVINSIE  
GAUTENG**

**Provincial Gazette Extraordinary  
Buitengewone Provinsiale Koerant**

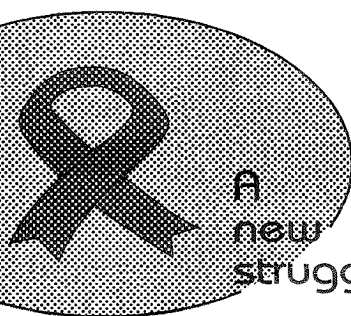
**Vol. 18**

**PRETORIA, 16 NOVEMBER 2012**

**No. 342**

**We all have the power to prevent AIDS**

AIDS  
affects  
us all



A  
new  
struggle

**AIDS  
HELPLINE**

**0800 012 322**

DEPARTMENT OF HEALTH

**Prevention is the cure**

*N.B. The Government Printing Works will not be held responsible for the quality of "Hard Copies" or "Electronic Files" submitted for publication purposes*



**IMPORTANT NOTICE**

The Government Printing Works will not be held responsible for faxed documents not received due to errors on the fax machine or faxes received which are unclear or incomplete. Please be advised that an "OK" slip, received from a fax machine, will not be accepted as proof that documents were received by the GPW for printing. If documents are faxed to the GPW it will be the sender's responsibility to phone and confirm that the documents were received in good order.

Furthermore the Government Printing Works will also not be held responsible for cancellations and amendments which have not been done on original documents received from clients.

**CONTENTS • INHOUD***No.**Page  
No.    Gazette  
No.***GENERAL NOTICE**

3125	Gauteng Transport Infrastructure Act (8/2001): Proclamation of access roads in connection with Provincial road P4-1 (K133): District Ekurhuleni .....	3	342
------	-------------------------------------------------------------------------------------------------------------------------------------------------------	---	-----

---

## GENERAL NOTICE

---

### NOTICE 3125 OF 2012

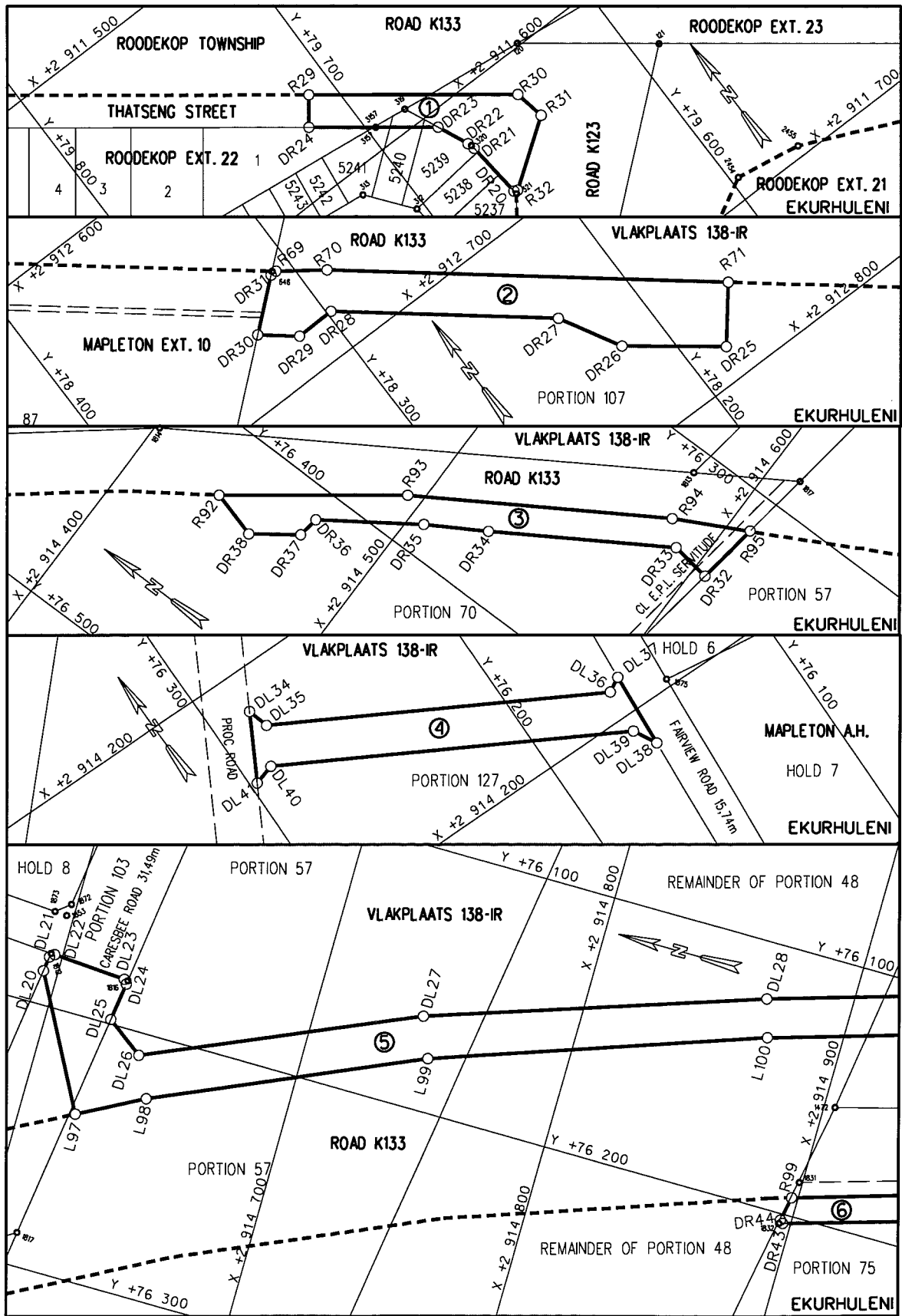
#### **PROCLAMATION OF ACCESS ROADS IN CONNECTION WITH PROVINCIAL ROAD P4-1 (K133): DISTRICT EKURHULENI**

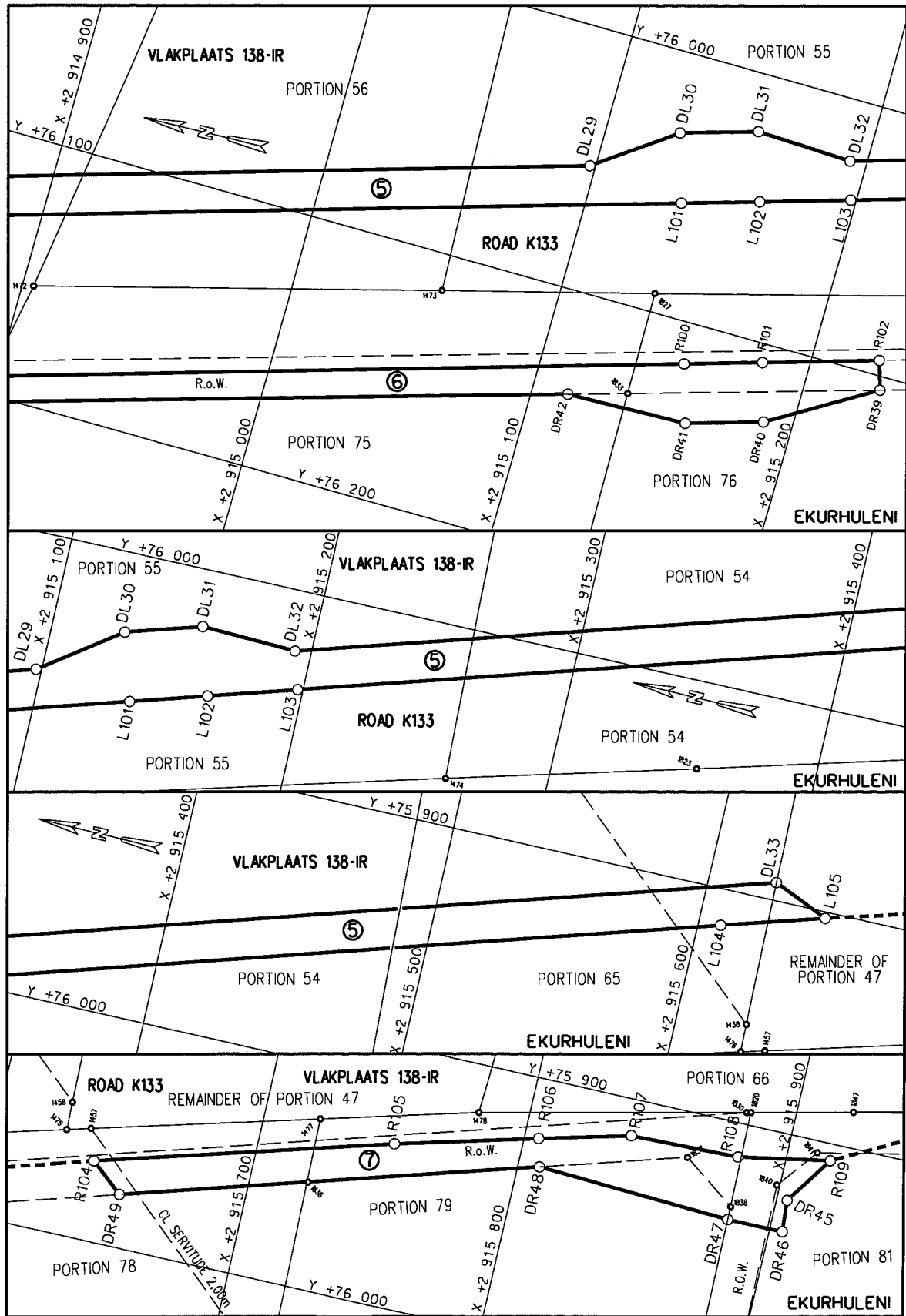
In terms of section 13(1) of the Gauteng Transport Infrastructure Act, 2001 (Act No. 8 of 2001) the MEC proclaims that access roads exists on the land as indicated on the accompanying sketch plans.

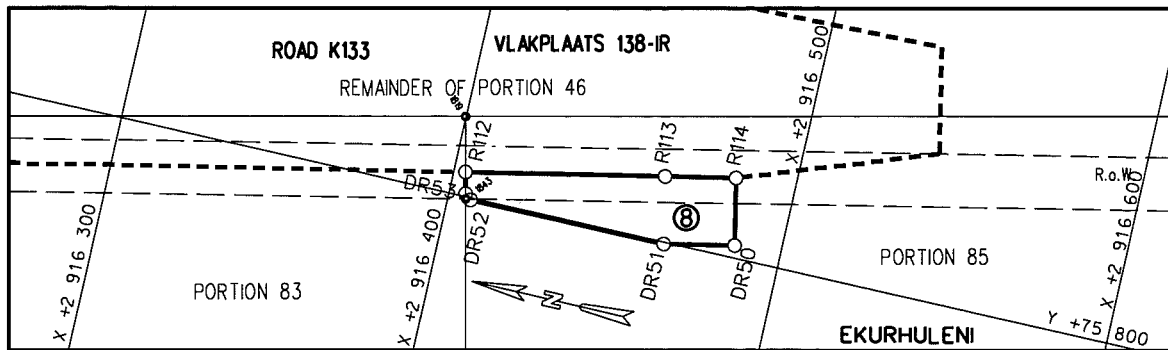
In terms of section 23(6) of the aforementioned act, it is hereby declared that boundary beacons demarcating the said access roads, have been placed and that plans PRS 75/42/33V-39V indicating the land encroached upon by virtue of the proclamation of the access roads, are available for inspection by any interested person in the Plan Room of the Department of Roads and Transport, Sage Life Building, 41 Simmonds Street, Johannesburg.

**Reference: 2/1/1/2/3/1-P4-1 (K133)**

**MEC Resolution 007 Dated 09 November 2012**

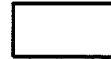






REFERENCE / VERWYSINGS

TOEGANGSPAAIE GEPROKLAAMEERDE  
ACCESS ROADS PROCLAIMED



- DIE FIGURE : (1) R29-R32, 321, DR20-DR24, R29.  
 THE FIGURES : (2) 646, R69-R71, DR25-DR30, 646.  
 (3) R92-R95, DR32-DR38, R92.  
 (4) DL34-DL41, DL34.  
 (5) DL21, 1812, DL22, DL23, 1816, DL24-DL33, L105-L97, DL19A, DL20,  
 DL21.  
 (6) R99-R102, DR39-DR43, 1832, DR44, R99.  
 (7) R104-R109, DR45-DR49, R104.  
 (8) R112-R114, DR50-DR52, 1843, DR53, R112.

VERTEENWOORDIG DIE PROKLAMASIE VAN TOEGANGSPAAIE OOR ERWE 5239, 5240 & 5241 IN ROODEKOP UITBREIDING 22. GEDEELTES 107, 70, 127, 103, 57, 56, 55, 54, 75, 76, 78, 79 & 81. DIE RESTANT VAN GEDEELTES 48 & 47 VAN DIE PLAAS VLAKPLAATS 138-IR SOOS BEDOEL BY DIE AFKONDIGING DAARVAN IN DIE PROVINSIALE KOERANT EN IN DETAIL GETOON OP PLANNE PRS 75/42/36V-39V.

REPRESENTS THE PROCLAMATION OF ACCESS ROADS OVER ERVEN 5239, 5240 & 5241 IN ROODEKOP EXTENSION 22. PORTIONS 1107, 70, 127, 103, 57, 56, 55, 54, 75, 76, 78, 79 & 81. THE REMAINDER OF PORTIONS 48 & 47 OF THE FARM VLAKPLAATS 138-IR AS INTENDED BY THE PUBLICATION THEREOF IN THE PROVINCIAL GAZETTE AND SHOWN IN DETAIL ON PLANS PRS 75/42/36V-39V.

BUNDEL NR. / FILE NO. 2/1/4/6/1-K133(1)

KOORDINATE LYS/CO-ORDINATE LIST WG 29° KONST./CONST. Y= +/- 0.00 X= +2 900 000.00

L97	+76237.143	+14621.405	R99	+76193.044	+14897.559	DL28	+76121.761	+14867.241
L98	+76223.980	+14646.308	R100	+76115.853	+15153.584	DL29	+76052.234	+15097.847
L99	+76179.553	+14747.165	R101	+76107.193	+15182.307	DL30	+76030.641	+15127.894
L100	+76136.122	+14871.571	R102	+76094.203	+15225.392	DL31	+76021.981	+15156.616
L101	+76056.492	+15135.687	R104	+75969.257	+15639.881	DL32	+76023.367	+15193.590
L102	+76047.832	+15164.410	R105	+75937.315	+15751.679	DL33	+75893.124	+15625.769
L103	+76037.729	+15197.920	R106	+75922.954	+15805.447	DL34	+76284.062	+14215.688
L104	+75913.943	+15608.492	R107	+75914.041	+15840.096	DL35	+76281.658	+14223.875
L105	+75902.430	+15647.241	R108	+75912.936	+15881.773	DL36	+76164.309	+14288.802
R29	+79709.867	+11565.802	R109	+75906.518	+15916.953	DL37	+76158.649	+14285.720
R30	+79645.308	+11614.722	R112	+75792.934	+16403.525	DL38	+76160.675	+14315.310
R31	+79642.966	+11626.533	R113	+75780.997	+16461.552	DL39	+76165.515	+14306.420
R32	+79667.706	+11644.053	R114	+75776.766	+16482.122	DL40	+76289.248	+14237.961
R69	+78306.264	+12658.348	DL20	+76187.161	+14594.393	DL41	+76297.344	+14240.339
R70	+78289.889	+12670.171	DL21	+76181.341	+14595.204	DR20	+79669.078	+11643.427
R71	+78169.401	+12767.678	DL22	+76179.957	+14596.908	DR21	+79671.302	+11621.023
R92	+76426.668	+14435.558	DL23	+76181.895	+14625.400	DR22	+79672.067	+11618.163
R93	+76382.598	+14494.279	DL24	+76183.482	+14626.689	DR23	+79677.568	+11605.975
R94	+76328.284	+14581.570	DL25	+76198.311	+14624.614	DR24	+79717.442	+11575.799
R95	+76314.400	+14608.399	DL26	+76208.679	+14638.900	DR25	+78185.128	+12787.112
R98	+76195.483	+14889.468	DL27	+76164.223	+14741.062	DR26	+78216.850	+12762.726

KOÖRDINATE LYS/CO-ORDINATE LIST WG 29° KONST./CONST. Y= +/- 0.00 X= +2 900 000.00								
DR27	+78229.993	+12739.225	DR21	+79671.302	+11621.023	DR38	+76431.771	+14453.869
DR28	+78298.399	+12683.867	DR22	+79672.067	+11618.163	DR39	+76105.224	+15228.715
DR29	+78314.018	+12684.091	DR23	+79677.568	+11605.975	DR40	+76129.214	+15188.947
DR30	+78326.790	+12673.755	DR24	+79717.442	+11575.799	DR41	+76137.874	+15160.224
DL31	+76021.981	+15156.616	DR25	+78185.128	+12787.112	DR42	+76139.315	+15113.658
DL32	+76023.367	+15193.590	DR26	+78216.850	+12762.726	DR43	+76203.487	+14896.968
DL33	+75893.124	+15625.769	DR27	+78229.993	+12739.225	DR44	+76202.439	+14895.805
DL34	+76284.062	+14215.688	DR28	+78298.399	+12683.867	DR45	+75925.018	+15904.067
DL35	+76281.658	+14223.875	DR29	+78314.018	+12684.091	DR46	+75937.147	+15904.958
DL36	+76164.309	+14288.802	DR30	+78326.790	+12673.755	DR47	+75937.267	+15883.348
DL37	+76158.649	+14285.720	DR31	+78308.627	+12658.437	DR48	+75933.559	+15808.216
DL38	+76160.675	+14315.310	DR32	+76338.598	+14605.039	DR49	+75979.732	+15652.315
DL39	+76165.515	+14306.420	DR33	+76336.371	+14589.581	DR50	+75796.356	+16486.151
DL40	+76289.248	+14237.961	DR34	+76374.977	+14527.772	DR51	+75800.587	+16465.582
DL41	+76297.344	+14240.339	DR35	+76387.947	+14506.070	DR52	+75800.630	+16406.791
			DR36	+76411.589	+14471.605	DR53	+75799.169	+16404.956
DR20	+79669.078	+11643.427	DR37	+76419.851	+14470.335			

