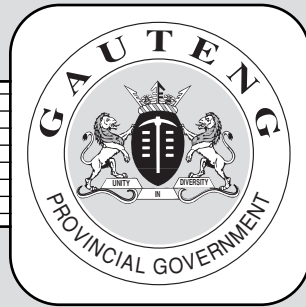


**THE PROVINCE OF
GAUTENG**



**DIE PROVINSIE
GAUTENG**

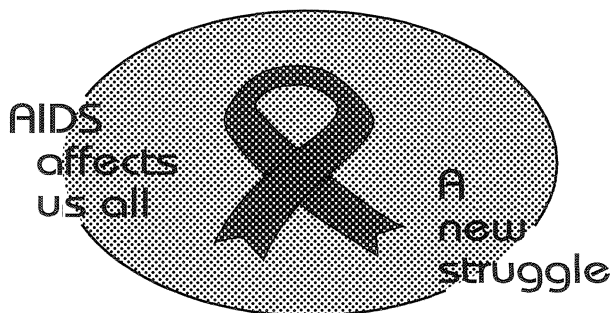
Provincial Gazette Extraordinary Buitengewone Provinsiale Koerant

Vol. 19

PRETORIA, 30 MAY
MEI 2013

No. 144

We all have the power to prevent AIDS



Prevention is the cure

**AIDS
HELPLINE**

0800 012 322

DEPARTMENT OF HEALTH

N.B. The Government Printing Works will not be held responsible for the quality of "Hard Copies" or "Electronic Files" submitted for publication purposes



IMPORTANT NOTICE

The Government Printing Works will not be held responsible for faxed documents not received due to errors on the fax machine or faxes received which are unclear or incomplete. Please be advised that an "OK" slip, received from a fax machine, will not be accepted as proof that documents were received by the GPW for printing. If documents are faxed to the GPW it will be the sender's responsibility to phone and confirm that the documents were received in good order.

Furthermore the Government Printing Works will also not be held responsible for cancellations and amendments which have not been done on original documents received from clients.

CONTENTS • INHOUD

<i>No.</i>		<i>Page No.</i>	<i>Gazette No.</i>
GENERAL NOTICE			
1397	Gauteng Transport Infrastructure Act (8/2001): Proclamation of the increase of the width of a portion of the Provincial Railway Line in respect of the Gauteng Rapid Rail Link between Pretoria, Johannesburg and the OR Tambo International Airport.....	3	144

GENERAL NOTICE

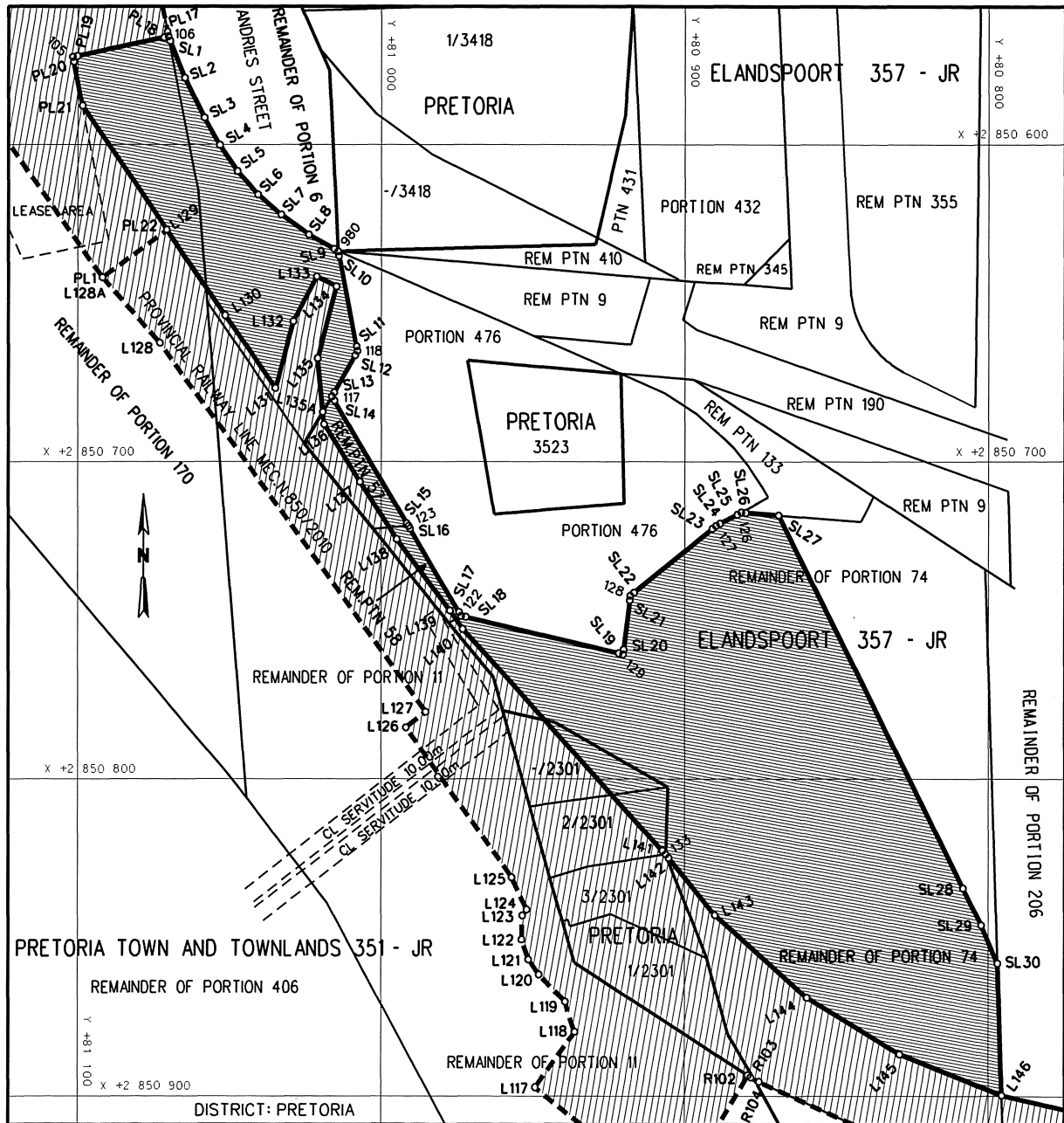
NOTICE 1397 OF 2013

PROCLAMATION OF THE INCREASE OF THE WIDTH OF A PORTION OF THE PROVINCIAL RAILWAY LINE IN RESPECT OF THE GAUTRAIN RAPID RAIL LINK BETWEEN PRETORIA, JOHANNESBURG AND THE O R TAMBO INTERNATIONAL AIRPORT

In terms of section 11(2) of the Gauteng Transport Infrastructure Act, 2001 (Act No. 8 of 2001) the MEC hereby proclaims the increase of the width of a portion of the provincial railway line on the land as described and indicated on the accompanying sketch plan.

In terms of section 23(6) of the aforementioned act it is hereby stated that plan GRP 03/38/38 Exp, which indicates the land affected by the increase of the width of a portion of the railway line in detail, is available for inspection at the office of the Department of Roads and Transport, First Floor, South Tower, Sage Life Building, 41 Simmonds Street, Johannesburg, during office hours.

Reference: 2/1/7/8 - Gautrain



REFERENCE

PROCLAMATION OF THE INCREASE
IN WIDTH OF THE RAILWAY LINE



PROVINCIAL RAILWAY LINE



THE FIGURE: 106, SL1 - SL9, 980, SL10, SL11, 118, SL12, SL13, 117, SL14, SL15, 123, SL16, SL17, 122, SL18, SL19, 129, SL20, SL121, 128, SL122, SL123, 127, SL124, SL125, 126, SL127 - SL30, L146 - L1130, PL22 - PL20, 105, PL19, PL18, 106.

REPRESENTS THE PROCLAMATION OF THE INCREASE IN WIDTH OF THE RAILWAY LINE OVER THE REMAINDER OF PORTION 170, THE REMAINDER OF PORTION 6, THE REMAINDER OF PORTION 57 AND THE REMAINDER OF PORTION 58 OF THE FARM PRETORIA TOWN AND TOWNLANDS 351-JR, THE REMAINDER AND PORTION 2 OF ERF 2301 IN PRETORIA, THE REMAINDER OF PORTION 74 OF THE FARM ELANDSPOORT 357-JR AS INTENDED BY THE PUBLICATION THEREOF IN THE PROVINCIAL GAZETTE AND SHOWN IN DETAIL ON PLAN GRP 03/38/38Exp.

FILE NO. 21/17/8-GAURTRAIN

CO-ORDINATE LIST WG 29 KONST./CONST. Y= +/- 0.00 X= +2 800 000.00								
SL1	+81069.724	+50567.377	SL23	+80890.799	+50721.077	L143	+80889.913	+50842.918
SL2	+81064.783	+50579.021	SL24	+80888.282	+50719.471	L144	+80859.778	+50868.960
SL3	+81058.474	+50591.551	SL25	+80882.698	+50716.639	L145	+80829.339	+50886.878
SL4	+81053.470	+50600.209	SL26	+80879.864	+50716.070	L146	+80795.666	+50899.861
SL5	+81047.703	+50608.378	SL27	+80869.146	+50716.862			
SL6	+81040.892	+50615.700	SL28	+80808.445	+50834.449	PL18	+81071.779	+50566.298
SL7	+81033.161	+50622.044	SL29	+80802.381	+50846.103	PL19	+81100.221	+50572.144
SL8	+81024.018	+50628.394	SL30	+80797.033	+50858.104	PL20	+81101.388	+50573.915
SL9	+81015.677	+50632.942				PL21	+81098.551	+50587.713
SL10	+81014.057	+50635.129	L130	+81051.690	+50653.888	PL22	+81070.777	+50626.813
SL11	+81008.183	+50663.621	L131	+81035.051	+50676.732			
SL12	+81008.645	+50666.380	L132	+81029.123	+50655.735	105	+81101.690	+50572.446
SL13	+81015.625	+50678.150	L133	+81021.467	+50641.607	106	+81070.310	+50565.996
SL14	+81015.598	+50680.714	L134	+81014.986	+50644.733	117	+81016.390	+50679.440
SL15	+80991.578	+50719.381	L135	+81021.139	+50667.397	118	+81007.880	+50665.090
SL16	+80990.524	+50721.080	L136	+81019.024	+50688.159	122	+80973.460	+50748.650
SL17	+80974.249	+50747.375	L137	+81006.971	+50706.302	123	+80991.050	+50720.230
SL18	+80971.997	+50748.979	L138	+80994.918	+50724.445	126	+80881.360	+50715.960
SL19	+80921.543	+50760.331	L139	+80977.231	+50746.909	127	+80889.620	+50720.150
SL20	+80919.889	+50759.172	L140	+80973.001	+50752.708	128	+80917.720	+50742.230
SL21	+80917.911	+50743.718	L141	+80907.191	+50822.615	129	+80920.080	+50760.660
SL22	+80916.541	+50741.303	L142	+80905.194	+50824.852	133	+80906.163	+50823.707
						980	+81014.360	+50633.660

