

**THE PROVINCE OF
GAUTENG**



**DIE PROVINSIE
GAUTENG**

Provincial Gazette Extraordinary Buitengewone Provinsiale Koerant

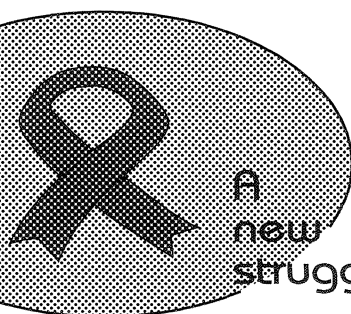
Vol. 19

PRETORIA, 28 JANUARY 2013
JANUARIE 2013

No. 16

We all have the power to prevent AIDS

AIDS
affects
us all



A
new
struggle

**AIDS
HELPLINE**

0800 012 322

DEPARTMENT OF HEALTH

Prevention is the cure

N.B. The Government Printing Works will not be held responsible for the quality of "Hard Copies" or "Electronic Files" submitted for publication purposes



IMPORTANT NOTICE

The Government Printing Works will not be held responsible for faxed documents not received due to errors on the fax machine or faxes received which are unclear or incomplete. Please be advised that an "OK" slip, received from a fax machine, will not be accepted as proof that documents were received by the GPW for printing. If documents are faxed to the GPW it will be the sender's responsibility to phone and confirm that the documents were received in good order.

Furthermore the Government Printing Works will also not be held responsible for cancellations and amendments which have not been done on original documents received from clients.

CONTENTS • INHOUD*No.**Page
No. Gazette
 No.***GENERAL NOTICE**

240	Gauteng Transport Infrastructure Act (8/2001): Proclamation of the increase in width of a portion of Provincial Road K154: District Vereeniging	3	16
-----	-------------------------------------------------------------------------------------------------------------------------------------------------------	---	----

GENERAL NOTICE

NOTICE 240 OF 2013

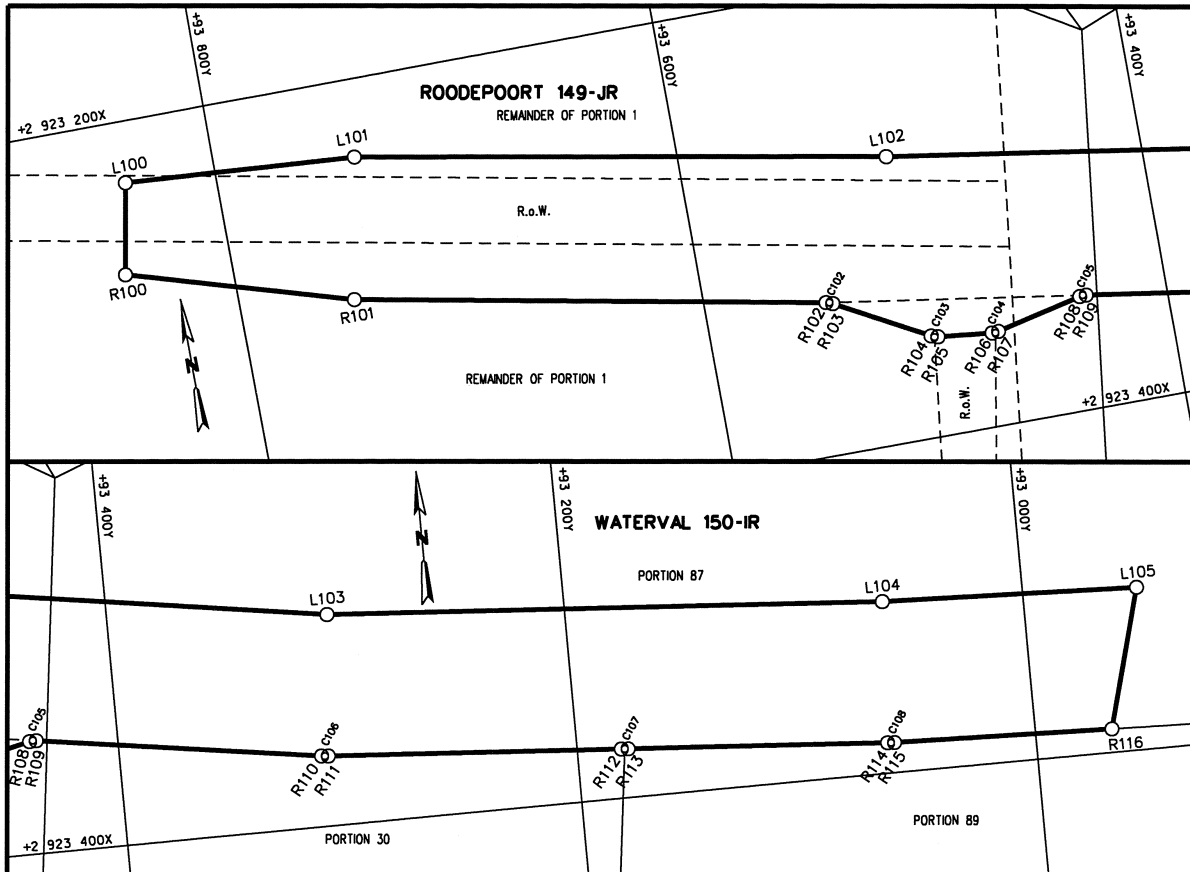
PROCLAMATION OF THE INCREASE IN WIDTH OF A PORTION OF PROVINCIAL ROAD K154: DISTRICT VEREENIGING

In terms of section 11(2) of the Gauteng Transport Infrastructure Act, 2001 (Act No. 8 of 2001) the MEC for Roads and Transport, proclaims the increase in width of a portion of provincial road K154 over the remaining extent of Portion 29 of the farm Waterval 150 IR and the remaining extent of Portion 1 of the farm Roodepoort 149 IR, as indicated on the accompanying sketch plan.

In terms of section 23 (6) of the aforementioned act, it is hereby declared that boundary beacons demarcating the said increase in width of a portion of the above-mentioned provincial road, have been placed on the land and that plan GRP 11/24/1Exp indicating the land encroached upon is available for inspection by any interested person in the Plan Room of the Department of Roads and Transport, Sage Life Building, 41 Simmonds Street, Johannesburg.

Reference: 2/1/1/2/3/1 – K154

MEC Resolution 008 dated 20 December 2012



REFERENCE / VERWYSINGS

GEPROKLAMEERDE PAD
PROCLAIMED ROAD



DIE FIGUUR : L100-L105, R116, R115, C108, R114, R113, C107, R112, R111, C106,
THE FIGURE : R110, R109, C105, R108, R107, C104, R106, R105, C103, R104, R103,
C102, R102-R100, L100.

VERTEENWOORDIG DIE PROKLAMASIE VAN DIE BETROKKE GEDEELTE VAN
PROVINSIALE PAD K154 OOR DIE RESTANT VAN GEDEELTE 1 VAN DIE PLAAS
ROODEPOORT 149-JR EN GEDEELTE 87 VAN DIE PLAAS WATERVAL 150-IR SOOS
BEDOEL BY DIE AFKONDIGING DAARVAN IN DIE PROVINSIALE KOERANT EN IN
DETAIL GETOON OP PLAN GRP 11/24/1EXP.

REPRESENTS THE PROCLAMATION OF THE PORTION CONCERNED OF PROVINCIAL
ROAD K154 OVER THE REMAINDER OF PORTION 1 OF THE FARM ROODEPOORT
149-JR AND PORTION 87 OF THE FARM WATERVAL 150-IR AS INTENDED BY THE
PUBLICATION THEREOF IN THE PROVINCIAL GAZETTE AND SHOWN IN DETAIL ON
PLAN GRP 11/24/1EXP.

BUNDEL NR. / FILE NO. 2/1/4/6/1-K154

KOÖRDINATE LYS/CO-ORDINATE LIST WG 29° KONST./CONST. Y= +/- 0.00 X= +2 900 000.00

L100	+93839.736	+23226.667	R104	+93505.157	+23355.862	R115	+93061.601	+23386.825
L101	+93739.519	+23233.755	R105	+93502.349	+23356.745	R116	+92966.579	+23389.698
L102	+93510.299	+23275.553	R106	+93478.821	+23359.355	C102	93545.930	23333.640
L103	+93304.072	+23307.499	R107	+93475.868	+23359.184	C103	93503.840	23356.580
L104	+93061.220	+23324.811	R108	+93438.272	+23350.556	C104	93477.330	23359.520
L105	+92950.215	+23328.836	R109	+93435.327	+23350.443	C105	93436.810	23350.220
R100	+93846.907	+23266.019	R110	+93312.183	+23368.969	C106	93310.700	23369.192
R101	+93750.636	+23294.750	R111	+93309.201	+23369.233	C107	93178.950	23378.520
R102	+93547.404	+23333.360	R112	+93180.446	+23378.413	C108	93063.100	23386.780
R103	+93544.613	+23334.358	R113	+93177.454	+23378.627			
			R114	+93064.596	+23386.673			

1/1