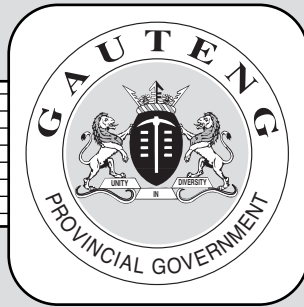


**THE PROVINCE OF
GAUTENG**



**DIE PROVINSIE
GAUTENG**

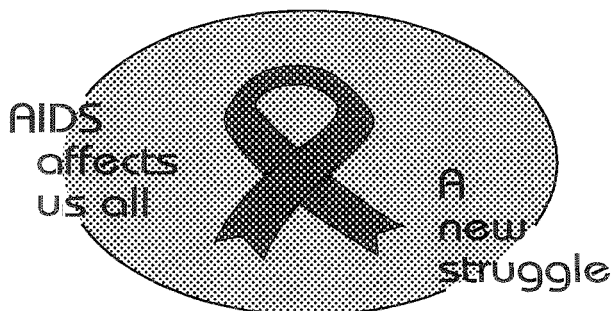
Provincial Gazette Extraordinary Buitengewone Provinsiale Koerant

Vol. 19

PRETORIA, 8 AUGUST
AUGUSTUS 2013

No. 229

We all have the power to prevent AIDS



Prevention is the cure

**AIDS
HELPLINE**

0800 012 322

DEPARTMENT OF HEALTH

N.B. The Government Printing Works will not be held responsible for the quality of "Hard Copies" or "Electronic Files" submitted for publication purposes



IMPORTANT NOTICE

The Government Printing Works will not be held responsible for faxed documents not received due to errors on the fax machine or faxes received which are unclear or incomplete. Please be advised that an "OK" slip, received from a fax machine, will not be accepted as proof that documents were received by the GPW for printing. If documents are faxed to the GPW it will be the sender's responsibility to phone and confirm that the documents were received in good order.

Furthermore the Government Printing Works will also not be held responsible for cancellations and amendments which have not been done on original documents received from clients.

CONTENTS**INHOUD**

<i>No.</i>		<i>Page No.</i>	<i>Gazette No.</i>	<i>No.</i>		<i>Bladsy No.</i>	<i>Koerant No.</i>
	GENERAL NOTICE				ALGEMENE KENNISGEWING		
2109	Local Government: Municipal Demarcation Act (27/1998): Re-determination of outer boundaries of municipalities.....	3	229	2109	Wet op Plaaslike Regering: Munisipale Afbakening (27/1998): Hervasstelling van buitengrense van munisipaliteit.....	5	229

GENERAL NOTICE

NOTICE 2109 OF 2013 MUNICIPAL DEMARCATION BOARD

NOTICE IN TERMS OF SECTION 21 OF THE LOCAL GOVERNMENT: MUNICIPAL DEMARCATION ACT 27 OF 1998

PROVINCE: GAUTENG

In terms of Section 21(3) of the Local Government: Municipal Demarcation Act 27 of 1998, the Municipal Demarcation Board has re-determined the municipal outer boundaries of the municipalities as per the attached Schedule 1.

And in terms of Section 21(4) of the Act, any person aggrieved by the redeterminations may submit written objections to:

The Municipal Demarcation Board

Private Bag X28

Hatfield

0028

Fax: 0123422480 or Fax to email: 0864008191

E-mail: info@demarcation.org.za

Written objections must reach the above within 30 days of the date of publication of this notice.

Written objections must be based on the criteria provided for in Sections 24 and 25 of the Municipal Demarcation Act 27 of 1998, and, in the case of metropolitan areas, additional criteria provided for in Section 2 of the Municipal Structures Act 117 of 1998.

The relevant reference number (DEM Number) as it appears in the 1st column of the attached schedule must be quoted in any correspondence with the Board

In the case of a discrepancy between the schedule and the map, the map shall prevail. **In the event of any inconsistency between the English version and any other translation of this notice, the English version shall prevail.**

MR LANDIWE J MAHLANGU

CHAIRPERSON: MUNICIPAL DEMARCATION BOARD

SCHEDULE

DEM Number	Affected Municipalities	Description
DEM4058_2	Randfontein Local Municipality (GT482) and Westonaria Local Municipality (GT483)	In terms of Section 21 of the Local Government: Municipal Demarcation Act 27 of 1998 the Municipal Demarcation Board has re-determined the municipal boundaries of Randfontein Local Municipality (GT482) and Westonaria Local Municipality (GT483), by amalgamating Randfontein Local Municipality (GT482) and Westonaria Local Municipality (GT483) into a single category B Local Municipality.
DEM721	Ekurhuleni Metropolitan Municipality (EKU) and City of Johannesburg Metropolitan Municipality (JHB)	In terms of Section 21 of the Local Government: Municipal Demarcation Act 27 of 1998 the Municipal Demarcation Board has re-determined the municipal boundaries of Ekurhuleni Metropolitan Municipality (EKU) and City of Johannesburg Metropolitan Municipality (JHB), by excluding a portion of the farm Elandsfontein 90 (portion of Eastgate Shopping Centre) from the municipal area of City of Johannesburg Metropolitan Municipality (JHB), and by including it into the municipal area of the Ekurhuleni Metropolitan Municipality (EKU).
DEM4059_3	Emfuleni Local Municipality (GT421), Midvaal Local Municipality (GT422), Lesedi Local Municipality (GT423), Sedibeng District Municipality (DC42) and Ekurhuleni Metropolitan Municipality (EKU),	In terms of Section 21 of the Local Government: Municipal Demarcation Act 27 of 1998, read with section 2 and 4 of the Local Government: Municipal Structures Act 117 of 1998, the Municipal Demarcation Board has re-determined the municipal boundaries of Emfuleni Local Municipality (GT421), Midvaal Local Municipality (GT422), Lesedi Local Municipality (GT423), Sedibeng District Municipality (DC42) and Ekurhuleni Metropolitan Municipality (EKU), by excluding Emfuleni Local Municipality (GT421) and Midvaal Local Municipality (GT422) from the municipal area of Sedibeng District Municipality (DC42), and by amalgamating them into a single Category A Metropolitan Municipality, and excluding Lesedi Local Municipality (GT423) from the municipal area of Sedibeng District Municipality (DC42), and by including it into the municipal area of Ekurhuleni Metropolitan Municipality (EKU).

KENNISGEWING 2109 VAN 2013**MUNISIPALE AFBAKENINGSRAAD****KENNISGEWING INGEVOLGE ARTIKEL 21 VAN DIE WET OP PLAASLIKE****REGERING: MUNISIPALE AFBAKENING 27 VAN 1998****PROVINSIE: GAUTENG**

Ingevolge artikel 21(3) van die Wet op Plaaslike Regering: Munisipale Afbakening 27 van 1998 ("die Wet") het die Munisipale Afbakeningsraad die munisipale buitengrense van die munisipaliteite volgens Bylae 1 hervasgestel.

Ingevolge artikel 21(4) van die Wet kan enigiemand wat deur die hervasstellings gegrief is skriftelik beswaar aanteken by:

Die Munisipale Afbakeningsraad

Private sak X28

Hatfield

0028

Faks: 0123422480

Faks na e-pos: 0864008191

E-pos: info@demarcation.org.za

Skriftelike besware moet bostaande adres binne 30 dae vanaf die datum van publikasie van hierdie kennisgewing bereik.

Skriftelike besware moet gegrond wees op die kriteria waarvoor voorsiening gemaak word in artikels 24 en 25 van die Wet en, in die geval van metropolitaanse gebiede, bykomende kriteria artikel 2 van die Wet op Munisipale Strukture 117 van 1998.

Die tersaaklik verwysingsnommer (DEM-nommer), soos dit in kolom 1 van die aangehegte bylae voorkom, moet in enige korrespondensie met die Raad gebruik word.

In die geval van 'n teenstrydigheid tussen die bylae en die kaart sal die kaart die deurslag gee.

MNR LANDIWE J MAHLANGU

VOORSITTER: MUNISIPALE AFBAKENINGSRAAD

BYLAE

DEM-nommer	Geraakte Munisipaliteite	Beskrywing
DEM721	Ekurhuleni Metropolitaanse Munisipaliteit (EKU) en die Stad Johannesburg Metropolitaanse Munisipaliteit (JHB)	Ingevolge artikel 21 van die Wet op Plaaslike Regering: Munisipale Afbakening 27 van 1998 het die Munisipale Afbakeningsraad die munisipale grense van Ekurhuleni Metropolitaanse Munisipaliteit (EKU) en die Stad Johannesburg Metropolitaanse Munisipaliteit (JHB) hervasgestel deur 'n gedeelte van die plaas Elandsfontein 90 (gedeelte van die Eastgate-winkelsentrum) uitgesluit van die munisipale gebied van die Stad Johannesburg Metropolitaanse Munisipaliteit (JHB) en dit ingesluit by die munisipale gebied van die Ekurhuleni Metropolitaanse Munisipaliteit (EKU).
DEM4058_2	Randfontein Plaaslike Munisipaliteit (GT482) en Westonaria Plaaslike Munisipaliteit (GT483)	Ingevolge artikel 21 van die Wet op Plaaslike Regering: Munisipale Afbakening 27 van 1998 het die Munisipale Afbakeningsraad die munisipale grense van Randfontein Plaaslike Munisipaliteit (GT482) and Westonaria Plaaslike Munisipaliteit (GT483) hervasgestel deur Randfontein Plaaslike Munisipaliteit (GT482) en Westonaria Plaaslike Munisipaliteit (GT483) te laat saamsmelt in 'n enkele kategorie B-Plaaslike Munisipaliteit.
DEM4059_3	Emfuleni Plaaslike Munisipaliteit (GT421), Midvaal Plaaslike Munisipaliteit (GT422), Lesedi Plaaslike Munisipaliteit (GT423), Sedibeng Distrik Munisipaliteit (DC42) and Ekurhuleni Metropolitaanse Munisipaliteit (EKU)	Ingevolge artikel 21 van die Wet op Plaaslike Regering: Munisipale Afbakening 27 van 1998, gelees tesamentlik met artikel 2 en 4 van die Wet op Plaaslike Regering: Munisipale Struktuur 117 van 1998, het die Munisipale Afbakeningsraad die munisipale grense van Emfuleni Plaaslike Munisipaliteit (GT421), Midvaal Plaaslike Munisipaliteit (GT422), Lesedi Plaaslike Munisipaliteit (GT423), Sedibeng Distrik Munisipaliteit (DC42) en Ekurhuleni Metropolitaanse Munisipaliteit (EKU) hervasgestel, deur Emfuleni Plaaslike Munisipaliteit (GT421) en Midvaal Plaaslike Munisipaliteit (GT422) uit te sluit van die munisipale gebied van Sedibeng Distrik Munisipaliteit (DC42), en hulle te laat saamsmelt in 'n enkele kategorie A- Plaaslike Munisipaliteit, en die uitsluit van die munisipale gebied van Lesedi Plaaslike Munisipaliteit (GT423) van die munisipale gebied van Sedibeng Distrik Munisipaliteit (DC42), en die in sluit daarvan by die munisipale gebied van Ekurhuleni Metropolitaanse Munisipaliteit (EKU).

NOTICE 2109 OF 2013**IBHODI LOKUHLUKANISWA KWEMINGCELE YOMASIPALA****ISAZISO NGOKWESAHLUKO SAMA-21 SOHULUMENI BASEKHAYA:****UMTHETHO WOKUHLUKANISWA KWEMINGCELE YOMASIPALA WAMA-27****WONYAKA WA-1998****ISIFUNDAZWE: IGAUTENG**

Ngokwesahluko sama-21(3) soHulumeni Basekhaya: uMthetho Wokuhlukaniswa Kwemingcele Yomasipala wama-27 wonyaka wa-1998, iBhodi Lokuhlukaniswa Kwemingcele Yomasipala linqumile futhi imingcele yangaphandle yomasipala njengakuSheduli efakiwe.

Nanoma ngubani onganeme ngokunqunywa kabusha angafaka isethulo esibhaliwe ngokweSahluko sama-21(4) kuleli kheli elingezansi:

IBhodi Lokuhlukaniswa Kwemingcele Yomasipala

Private Bag X28

Hatfield

0028

Ifeksi: 0123422480

Ifeksi eya ku-imeyili: 0864008191

I-imeyili: info@demarcation.org.za

Ukuphikisa okubhaliwe kufanele kufike ngenhla kungakapheli izinsuku ezingu-30 zosuku lokushicilelwa kwalesi saziso.

Ukuphikisa okubhaliwe kufanele kususelwe endleleni yokwenza ehlinzekwe kuSahluko sama-24 nesama-25 soMthetho Wokuhlukaniswa Kwemingcele wama-27 wonyaka wa-1998, futhi, esimweni sezindawo zamadolobhakazi, indlela yokwenza eyengeziwe ehlinzekelwe kuSahluko sesi-2 soMthetho Wezinhlaka Zomasipala wa-117 wonyaka wa-1998.

Inombolo yereferensi efanele (inombolo ye-DEM) njengoba ivele kukhalamu yoku-1 eseshedulini efakiwe ifanele ishiwo kunoma ikuphi ukuxhumana neBhodi.

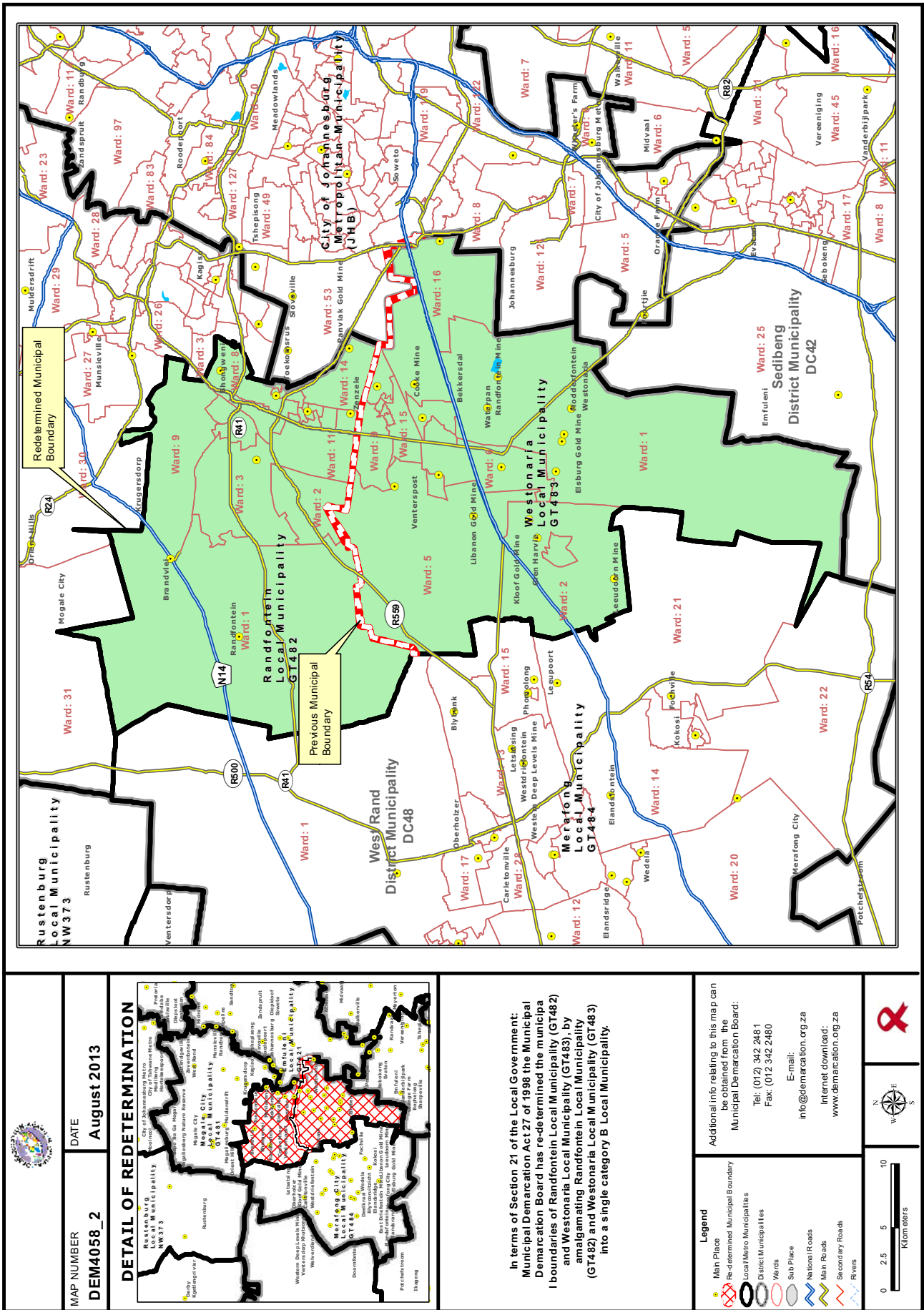
Esimweni samaphutha aphakathi kwesheduli nebalazwe, kuzosebenza ibalazwe.

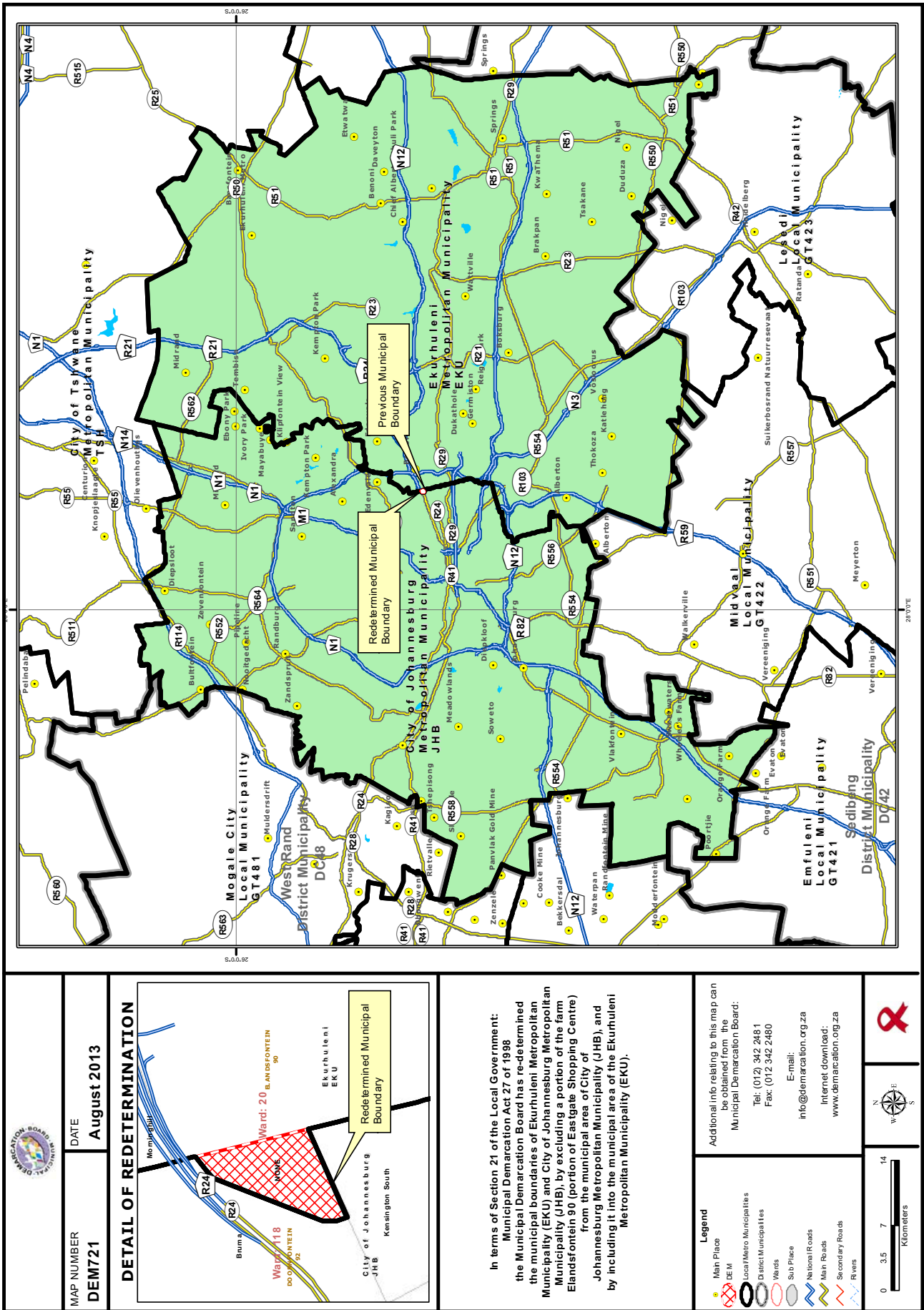
UMNU. LANDIWE J MAHLANGU

Usihlalo: IBhodi Lokuhlukaniswa Kwemingcele Yomasipala

SHEDULI

Inombolo ye-DEM	OMasipala Abathintekile	Incazelo
DEM721	UMasipala Wedolobhakazi lasEkurhuleni (EKU) kanye neMasipala Wedolobhakazi i-City of Johannesburg (JHB)	Ngokwesahluko sama-21 soHulumeni Basekhaya: uMthetho Wokuhlukaniswa Kwemingcele Yomasipala wama-27 wonyaka wa-1998, iBhodi Lokuhlukaniswa Kwemingcele Yomasipala linqumile futhi imingcele yoMasipala Wedolobhakazi lasEkurhuleni (EKU) kanye noMasipala Wedolobhakazi i-City of Johannesburg (JHB), ngokuyishiya ngaphandle izingxenye zepulazi i-Elandsfontein 90 (ingxenye ye-Eastgate Shopping Centre) kuMasipala Wedolobhakazi i-City of Johannesburg (JHB), kanye nangokuyifaka endaweni kaMasipala Wedolobhakazi lasEkurhuleni (EKU).
DEM4058_2	UMasipala Wendawo iRandfontein (GT482) kanye noMasipala Wendawo i-Westonaria (GT483)	Ngokwesahluko sama-21 soHulumeni Basekhaya: uMthetho Wokuhlukaniswa Kwemingcele Yomasipala wama-27 wonyaka wa-1998, iBhodi Lokuhlukaniswa Kwemingcele Yomasipala linqumile futhi imingcele yoMasipala Wendawo wase-Randfontein (GT482) kanye noMasipala Wendawo wase-Westonaria (GT483), ngokuhlanganisa uMasipala Wendawo wase-Randfontein (GT482) kanye noMasipala Wendawo wase-Westonaria ukuba ube nguMasipala oyedwa wendawo wohlaka B.
DEM4059_3	UMasipala Wendawo waseEmfuleni (GT421) ; uMasipala Wendawo waseMidvaal (GT422) ; uMasipala Wendawo yaseLesedi (GT423) ; uMasipala Wesifunda saseSedibeng (DC42) ; uMasipala Omkhulu wasEkurhuleni (iEKU)	Ngokwesahluko sama-21 soHulumeni Basekhaya: uMthetho Wokuhlukaniswa Kwemingcele Yomasipala wama-27 wonyaka wa-1998, iBhodi Lokuhlukaniswa Kwemingcele Yomasipala linqumile futhi imingcele yoMasipala Wendawo wasEmfuleni (GT421), uMasipala Wendawo waseMidvaal (GT422), uMasipala Wendawo waseLesedi (GT423), uMasipala Wesifunda saseSedibeng (DC42), noMasipala Omkhulu wasEkurhuleni (EKU), ngokuyishiya ngaphandle uMasipala Wendawo wasEmfuleni (GT421) noMasipala Wendawo waseMidvaal (GT422) kuMasipala Wesifunda saseSedibeng (DC42), ngokuhlanganisa uMasipala Wendawo wasEmfuleni (GT421) noMasipala Wendawo waseMidvaal (GT422) ukuba ube nguMasipala Omkhulu oyedwa wendawo wohlaka A nokuyishiya ngaphandle uMasipala Wendawo waseLesedi (GT423) kuMasipala Wesifunda saseSedibeng (DC42), nokufaka uMasipala Wendawo waseLesedi (GT423) kuMasipala Omkhulu wasEkurhuleni (EKU).

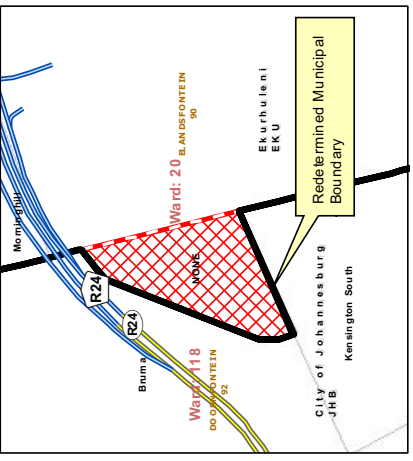




MAP NUMBER
DEM721

DATE
August 2013

DETAIL OF REDETERMINATION



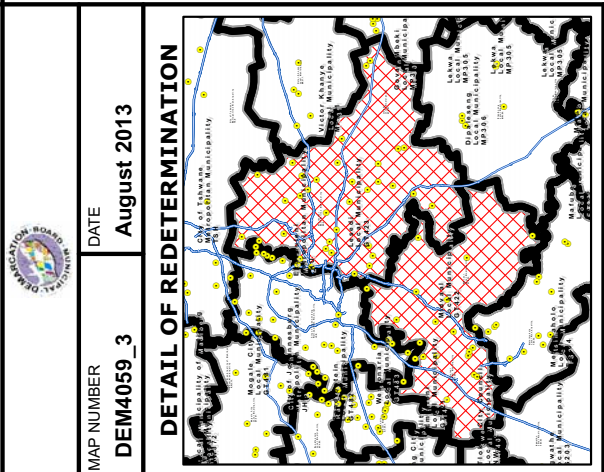
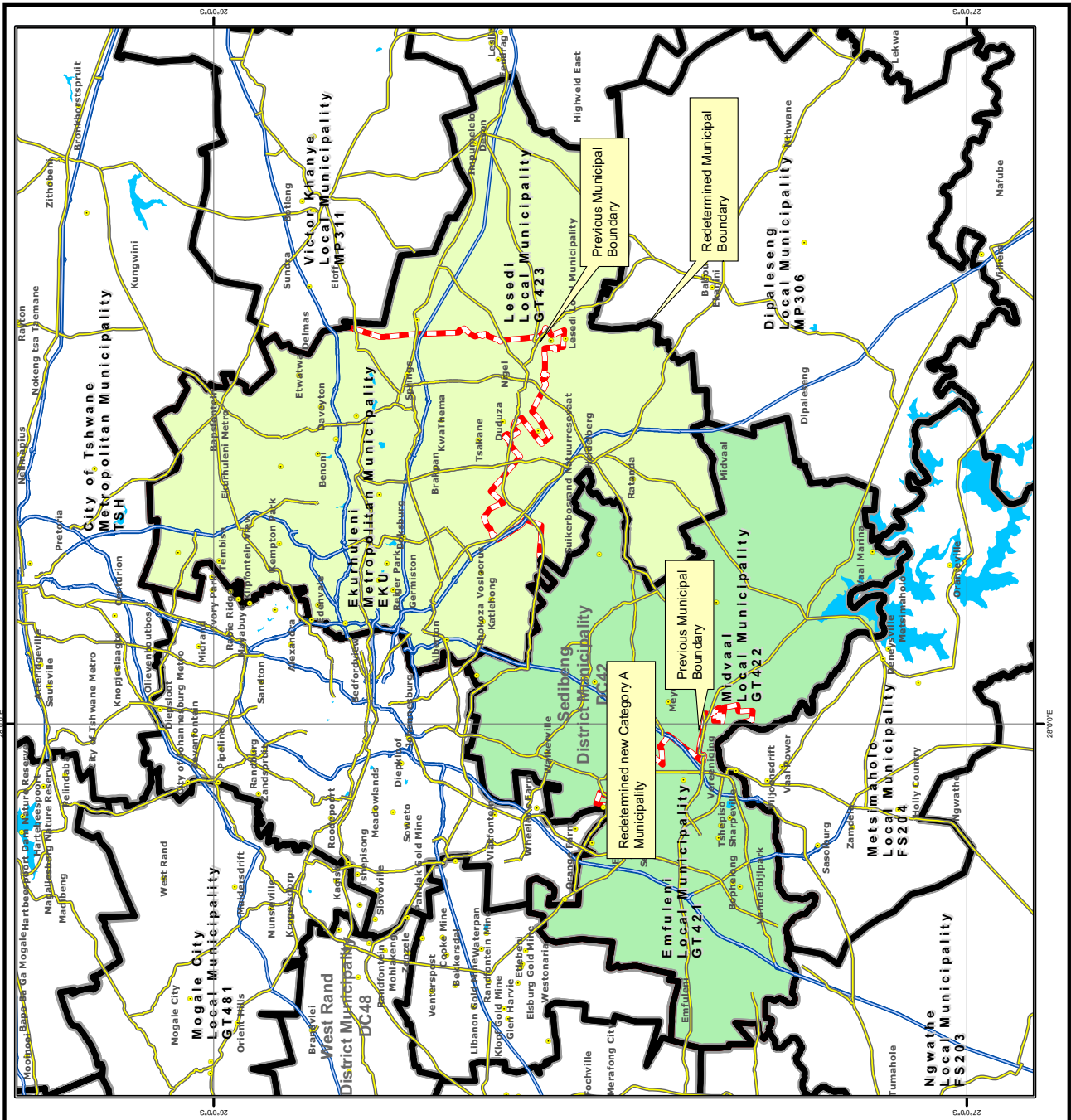
In terms of Section 21 of the Local Government Municipal Demarcation Act 27 of 1998 the Municipal Demarcation Board has re-determined the municipal boundaries of Ekurhuleni Metropolitan Municipality (EKU) and City of Johannesburg Metropolitan Municipality (JHB), by excluding a portion of the farm Elandsfontein 90 portion of Eastgate Shopping Centre) from the municipal area of City of Johannesburg Metropolitan Municipality (JHB), and by including it into the municipal area of the Ekurhuleni Metropolitan Municipality (EKU).

Legend

- Man Place
- ME/M
- Local/Metro Municipalities
- District Municipalities
- Wards
- Sub Place
- National Roads
- Main Roads
- Secondary Roads
- Rivers

Additional info relating to this map can be obtained from the Municipal Demarcation Board:
Tel: (012) 342 2481
Fax: (012) 342 2480
E-mail: info@demarcation.org.za
Internet download: www.demarcation.org.za





MAP NUMBER
DEM4059_3

DATE
August 2013

In terms of Section 21 of the Local Government: Municipal Demarcation Act of 1998:

the Municipal Demarcation Board has re-determined the municipal boundaries of Emfuleni Local Municipality (GT421), Midvaal Local Municipality (GT422), Lesedi Local Municipality (GT423), Sedibeng District Municipality (DC42) and Ekurhuleni Metropolitan Municipality (EKU), by excluding Emfuleni Local Municipality (GT421) and Midvaal Local Municipality (GT422) from the municipal area of Sedibeng District Municipality (DC42), and by amalgamating them into a new single Category A Metropolitan Municipality, and excluding Lesedi Local Municipality (GT423) from the municipal area of Sedibeng District Municipality (DC42), and by including it into the municipal area of Ekurhuleni Metropolitan Municipality (EKU).

Additional info relating to this map can be obtained from the Municipal Demarcation Board:

Tel: (012) 342 2481
Fax: (012) 342 2480

E-mail: info@demarcation.org.za
Internet download: www.demarcation.org.za

Legend

- Main Place
- Redetermined Municipal Boundary
- Municipal Demarcation Board
- Local/Metro Municipalities
- District Municipalities
- Wards
- Sub Place
- National Roads
- Main Roads
- Secondary Roads
- Rivers

