

**THE PROVINCE OF
GAUTENG**



**DIE PROVINSIE
GAUTENG**

**Provincial Gazette Extraordinary
Buitengewone Provinsiale Koerant**

Vol. 19

PRETORIA, 7 NOVEMBER 2013

No. 322

We all have the power to prevent AIDS



**AIDS
HELPLINE**

0800 012 322

DEPARTMENT OF HEALTH

Prevention is the cure

N.B. The Government Printing Works will not be held responsible for the quality of "Hard Copies" or "Electronic Files" submitted for publication purposes



IMPORTANT NOTICE

The Government Printing Works will not be held responsible for faxed documents not received due to errors on the fax machine or faxes received which are unclear or incomplete. Please be advised that an "OK" slip, received from a fax machine, will not be accepted as proof that documents were received by the GPW for printing. If documents are faxed to the GPW it will be the sender's responsibility to phone and confirm that the documents were received in good order.

Furthermore the Government Printing Works will also not be held responsible for cancellations and amendments which have not been done on original documents received from clients.

CONTENTS • INHOUD

<i>No.</i>		<i>Page No.</i>	<i>Gazette No.</i>
	GENERAL NOTICE		
3193	Gauteng Transport Infrastructure Act (8/2001): Proclamation of the increase in width of Provincial Road P126-1: District Krugersdorp	3	322

GENERAL NOTICE

NOTICE 3193 OF 2013

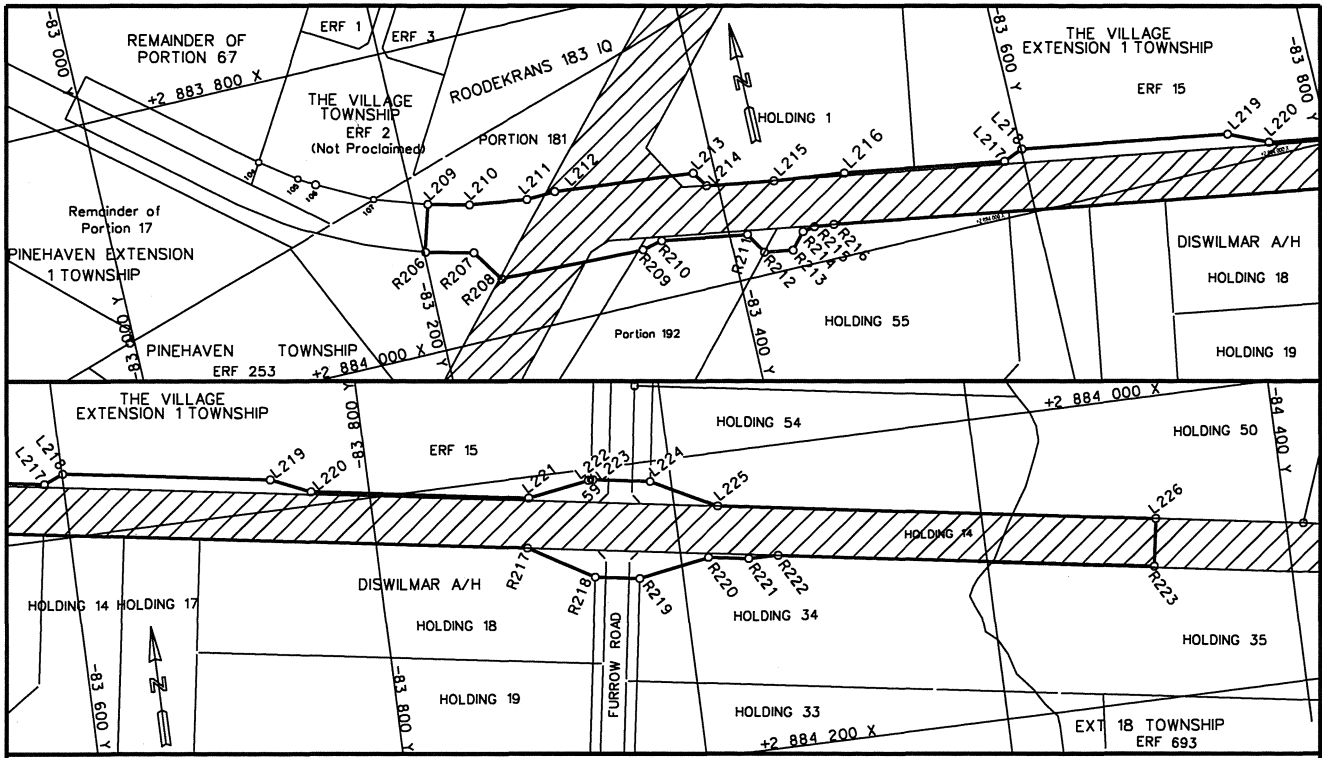
PROCLAMATION OF THE INCREASE IN WIDTH OF PROVINCIAL ROAD P126-1: DISTRICT KRUGERSDORP

In terms of section 11(2) of the Gauteng Transport Infrastructure Act, 2001 (Act No. 8 of 2001) the MEC for Roads and Transport, proclaims the increase in width of a portion of Provincial road P126-1 as indicated on the accompanying sketch plan.

In terms of section 23(6) of the aforementioned act it is hereby declared that boundary beacons demarcating the said increase in width of a portion of the above-mentioned provincial road, have been placed and plan GRP 13/07/2 EXP indicating the land encroached upon is available for inspection by any interested person in the Plan Room of the Department of Roads and Transport, Sage Life Building, 41 Simmonds Street, Johannesburg.

Reference: 2/1/1/2/3/1-P126-1

MEC Resolution 011 Dated 04 July 2013



REFERENCE

ROAD WIDENING  EXISTING ROADS 

THE FIGURE : L209-L222, 59, L223-L226, R223-R206, L209.

REPRESENT THE PROCLAMATION OF THE INCREASE IN WIDTH OF PROVINCIAL ROAD P126-1 OVER PORTION 181, PORTION 192, HOLDING 55, HOLDING 1, HOLDING 54, HOLDING 18, HOLDING 34 OF DISWILMAR AGRICULTURAL HOLDINGS, ERF 15 OF THE VILLAGE EXTENSION 1 TOWNSHIP AS INTENDED BY THE PUBLICATION THEREOF IN THE PROVINCIAL GAZETTE AND SHOWN IN DETAIL ON PLAN GRP 13/07/2Exp.

BUNDEL NR. / FILE NO. 2/1/1/2/3/1-P126-1

CO-ORDINATE LIST WG 27° CONST. Y= +/- 0.00 X= +2 800 000.00

L209	-83 209.805	+83 903.563	L222	-83 945.190	+84 007.115	R213	-83 438.593	+83 988.221
L210	-83 236.981	+83 910.224	L223	-83 948.151	+84 007.107	R214	-83 447.905	+83 977.783
L211	-83 274.683	+83 915.553	L224	-83 986.170	+84 013.180	R215	-83 455.943	+83 976.377
L212	-83 293.746	+83 914.655	L225	-84 028.235	+84 035.113	R216	-83 468.600	+83 977.780
L213	-83 386.005	+83 923.707	L226	-84 313.988	+84 080.705	R217	-83 899.767	+84 046.571
L214	-83 392.685	+83 933.937	R206	-83 200.997	+83 933.830	R218	-83 941.434	+84 071.402
L215	-83 436.883	+83 940.940	R207	-83 232.449	+83 941.532	R219	-83 971.060	+84 076.130
L216	-83 483.035	+83 946.341	R208	-83 246.526	+83 962.568	R220	-84 017.958	+84 068.181
L217	-83 587.607	+83 963.060	R209	-83 341.949	+83 965.313	R221	-84 044.265	+84 072.379
L218	-83 600.540	+83 957.782	R210	-83 355.716	+83 962.449	R222	-84 063.930	+84 072.768
L219	-83 735.911	+83 979.425	R211	-83 411.747	+83 971.390	R223	-84 309.013	+84 111.882
L220	-83 761.568	+83 990.871	R212	-83 419.908	+83 985.239	59	-83 946.670	+84 006.870
L221	-83 904.826	+84 013.783						