

**THE PROVINCE OF
GAUTENG**



**DIE PROVINSIE
GAUTENG**

Provincial Gazette Extraordinary Buitengewone Provinsiale Koerant

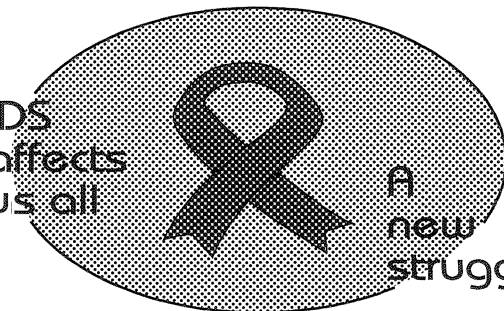
Vol. 19

PRETORIA, 19 NOVEMBER 2013

No. 338

We all have the power to prevent AIDS

AIDS
affects
us all



A
new
struggle

Prevention is the cure

**AIDS
HELPLINE**

0800 012 322

DEPARTMENT OF HEALTH

N.B. The Government Printing Works will not be held responsible for the quality of "Hard Copies" or "Electronic Files" submitted for publication purposes



IMPORTANT NOTICE

The Government Printing Works will not be held responsible for faxed documents not received due to errors on the fax machine or faxes received which are unclear or incomplete. Please be advised that an "OK" slip, received from a fax machine, will not be accepted as proof that documents were received by the GPW for printing. If documents are faxed to the GPW it will be the sender's responsibility to phone and confirm that the documents were received in good order.

Furthermore the Government Printing Works will also not be held responsible for cancellations and amendments which have not been done on original documents received from clients.

CONTENTS • INHOUD

<i>No.</i>		<i>Page No.</i>	<i>Gazette No.</i>
GENERAL NOTICES			
3410	Gauteng Transport Infrastructure Act (8/2001): Proposed Closure of a portion of Provincial Road 31: District Pretoria	3	338
3411	do.: Proposed deviation and resultant closure of an access road in connection with Provincial Road K57: District Johannesburg	5	338

GENERAL NOTICES

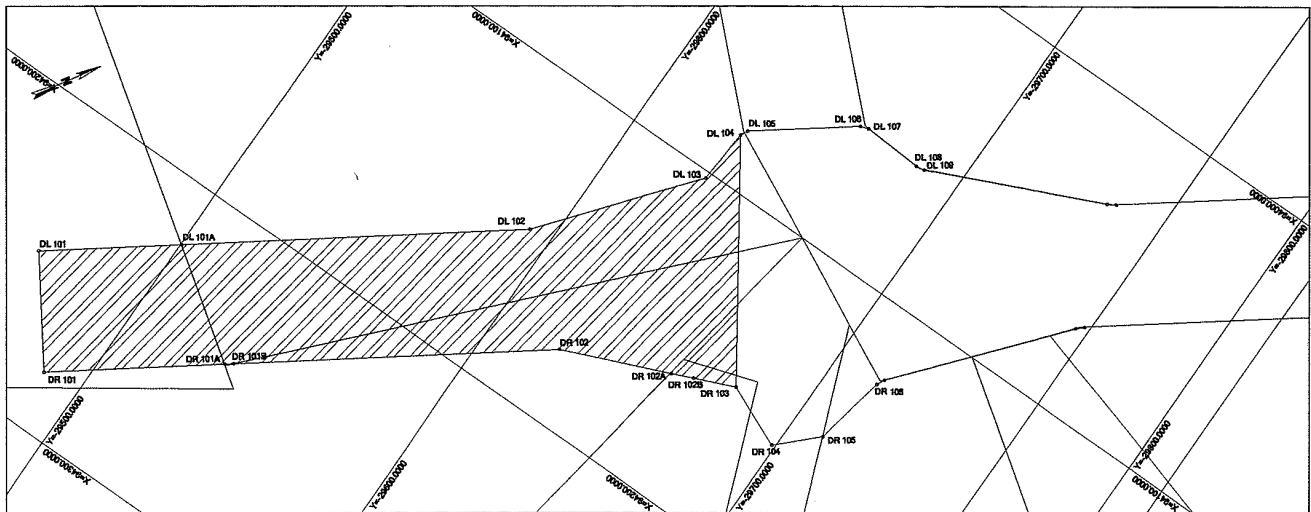
NOTICE 3410 OF 2013

PROPOSED CLOSURE OF A PORTION OF PROVINCIAL ROAD 31: DISTRICT: PRETORIA.

An application in terms of section 38(2)(a) of the Gauteng Transport Infrastructure Act, 2001, (Act No 8 of 2001) has been received from E.D.S Structural Civil and Transportation Engineers to close a portion of Provincial Road 31 as indicated on accompanying sketch plan.

In terms of Section 38(5) of the aforementioned Act interested parties are hereby requested to submit comments or objections in writing, to the Head: Department of Roads and Transport, Directorate Design, Tel No. (011) 355 7264, Private Bag X83, Marshalltown 2107, within 30(thirty) days from the date of this notice.

Reference: 2/1/1/2/3/1-31



REFERENCE / VERWYSINGS

GESLUIT
CLOSED



DIE FIGUUR: / THE FIGURE:

DL 101 - DL 104 AND DR 101 - DR103

VERTEENWOORDIG DIE SLUITING VAN DIE BETROKKE GEDEELTE VAN BESTAANDE PAD 31 OOR RESTANT VAN PORSIE 29, RESTANT VAN PORSIE 30 EN ERF 27339 VAN DIE PLAAS KRUISFONTEIN 262-JR SOOS BEDOEL BY DIE AFKONDIGING DAARVAN IN DIE PROVINSIALE KOERANT.

REPRESENTS THE CLOSURE OF THE PORTION CONCERNED TO EXISTING PROVINCIAL ROAD 31 OVER THE REMAINDER OF PORTION 29 , REMAINDER OF PORTION 30 AND ERF 27339 OF THE FARM KRUISFONTEIN 262-JR AND INTENDED BY THE PUBLICATION THEREOF IN THE PROVINCIAL GAZETTE.

DIE VOORGENOENDE SKETSE KAN BESKOU WORD OP PLAN PRS 92/88/3V BY DIE PLAN KANTOOR, GAUTENG DEPARTEMENT VAN VERVOER, 30 SIMON STRAAD, JOHANNESBURG.

THE ABOVE MENTIONED SKETCHES CAN BE SEEN IN MORE DETAIL ON PLAN PRS 92/88/33V LOCATED AT THE PLAN OFFICE, GAUTENG DEPARTMENT OF ROADS AND TRANSPORT, 30 SIMMOND STREET, JOHANNESBURG.

KOORDINATE LYS/CO-ORDINATE LIST WG 29 KONST./CONST. ± Y = 94 000.00 ± X = 2 900 000.00

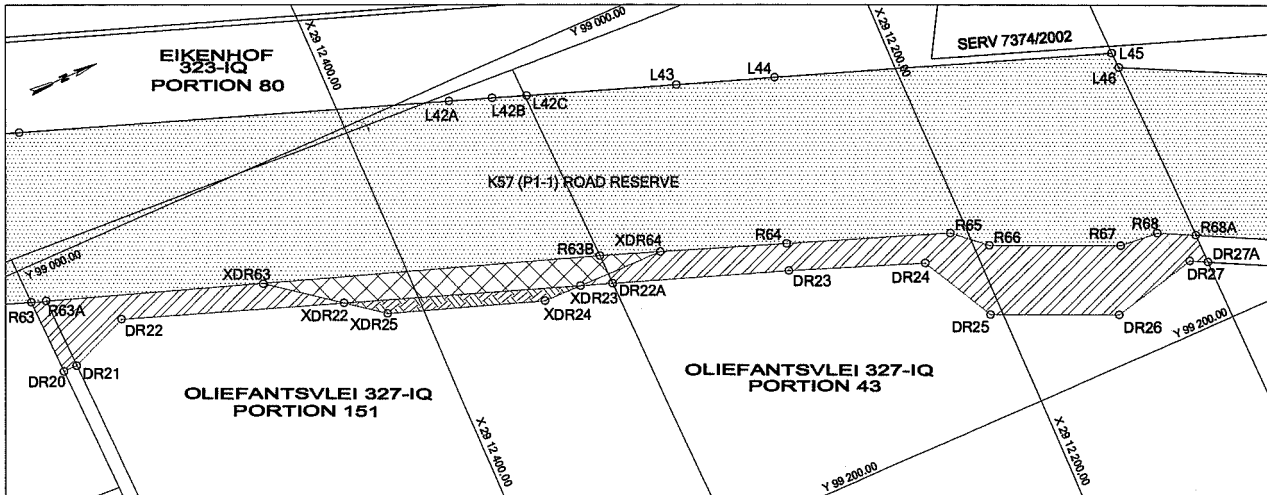
DL101	+ 94 248.67	29 462.88	DR101	+ 94 280.42	29 487.22
DL101A	+ 94 219.95	29 500.35	DR101A	+ 94 243.93	29 534.81
DL102	+ 94 149.50	29 592.24	DR101B	+ 94 242.14	29 537.15
DL103	+ 94 102.10	29 630.25	DR102	+ 94 176.38	29 622.63
DL104	+ 94 083.82	29 631.49	DR102A	+ 94 161.47	29 658.08
			DR102B	+ 94 158.57	29 664.93
			DR103	+ 94 152.99	29 678.09

NOTICE 3411 OF 2013**PROPOSED DEVIATION AND RESULTANT CLOSURE OF AN ACCESS ROAD IN CONNECTION WITH PROVINCIAL ROAD K57: DISTRICT JOHANNESBURG**

In terms of section 13(1) of the Gauteng Transport Infrastructure Act, 2001 (Act No. 8 of 2001) ("the Act") the MEC proclaims the deviation and resultant closure of an access road as described and indicated by the figures on the accompanying sketch plan.

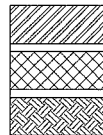
In terms of section 23(6) of the aforementioned act it is hereby stated that boundary beacons demarcating the said deviation and resultant closure of an access road, have been placed and that plan PRS72/172/5V indicating the land encroached upon by virtue of the deviation and resultant closure are available for inspection or written complaints within 30 days from the date of this notice by any interested person in the Plan Room of the Department of Roads and Transport, Sage Life Building, 41 Simmonds Street, Johannesburg.

Reference: 2/1/1/2/3/1-K57



REFERENCE / VERWYSINGS

VOORGESTELDE DIENSPAD SLUITING
 PROPOSED SERVICE ROAD CLOSURE
 BESTAANDE DIENSPAD
 EXISTING SERVICE ROAD
 VOORGESTELDE AREA GEPROKLAEMEER VIR TOEGANG
 PROPOSED AREA PROCLAIMED FOR ACCESS



BESTAANDE K57 PAD RESERVE
 EXISTING K57 ROAD RESERVE



DIE FIGUUR: / THE FIGURE:

R63, R63A, XDR63, XDR22, DR22, DR21, DR20 EN R63

VERTEENWOORDIG DIE VOORGESTELDE SLUITING VAN DIE BETROKKE GEDEELTE VAN DIENSPAD NA BESTAANDE PROVINSIALE PAD K57 (P1-1) OOR PORSIE 151 VAN DIE PLAAS OLIEFANTSVLEI 327-IQ SOOS BEDOEL BY DIE AFKONDIGING DAARVAN IN DIE PROVINSIALE KOERANT.

R63, R63A, XDR63, XDR22, DR22, DR21, DR20 AND R63

REPRESENTS THE PROPOSED CLOSURE OF THE PORTION CONCERNED OF SERVICE ROAD TO EXISTING PROVINCIAL ROAD K57 (P1-1) OVER PORTION 151 OF THE FARM OLIEFANTSVLEI 327-IQ AS INTENDED BY THE PUBLICATION THEREOF IN THE PROVINCIAL GAZETTE.

XDR64, R64-R68A, DR27A-DR22A, XDR23 EN XDR64

VERTEENWOORDIG DIE VOORGESTELDE SLUITING VAN DIE BETROKKE GEDEELTE VAN DIENSPAD NA BESTAANDE PROVINSIALE PAD K57 (P1-1) OOR PORSIE 43 EN 151 VAN DIE PLAAS OLIEFANTSVLEI 327-IQ SOOS BEDOEL BY DIE AFKONDIGING DAARVAN IN DIE PROVINSIALE KOERANT.

XDR64, R64-R68A, DR27A-DR22A, XDR23 AND XDR64

REPRESENTS THE PROPOSED CLOSURE OF THE PORTION CONCERNED OF SERVICE ROAD TO EXISTING PROVINCIAL ROAD K57 (P1-1) OVER PORTION 43 AND 151 OF THE FARM OLIEFANTSVLEI 327-IQ AS INTENDED BY THE PUBLICATION THEREOF IN THE PROVINCIAL GAZETTE.

XDR22 - XDR25 EN XDR22

VERTEENWOORDIG DIE VOORGESTELDE PROKLAEMEERING VAN 'N TOEGANGSPAD NA DIE BETROKKE GEDEELTE VAN BESTAANDE PROVINSIALE PAD K57 (P1-1) OOR PORSIE 43 EN 151 VAN DIE PLAAS OLIEFANTSVLEI 327-IQ SOOS BEDOEL BY DIE AFKONDIGING DAARVAN IN DIE PROVINSIALE KOERANT.

XDR22 - XDR25 AND XDR22

REPRESENTS THE PROPOSED PROCLAMATION OF AN ACCESS ROAD TO THE PORTION CONCERNED OF EXISTING PROVINCIAL ROAD K57 (P1-1) OVER PORTION 43 AND 151 OF THE FARM OLIEFANTSVLEI 327-IQ AS INTENDED BY THE PUBLICATION THEREOF IN THE PROVINCIAL GAZETTE.

KOORDINATE LYS/CO-ORDINATE LIST WG 29 KONST./CONST. Y= +/- 0.00 X= +2 900 000.00

R63	-99 012.91 12 534.35	DR21	-99 041.49 12 528.38	XDR64	-99 091.05 12 309.04
R63A	-99 014.78 12 528.97	DR22	-99 032.45 12 505.84	XDR22	-99 060.60 12 426.58
R63B	-99 083.52 12 330.73	DR22A	-99 094.73 12 330.46	XDR23	-99 090.66 12 341.91
R64	-99 106.49 12 264.50	DR23	-99 116.86 12 268.14	XDR24	-99 090.49 12 356.43
R65	-99 128.47 12 206.10	DR24	-99 135.08 12 219.22	XDR25	-99 070.83 12 413.13
R66	-99 138.64 12 194.45	DR25	-99 162.66 12 204.43		
R67	-99 158.56 12 148.94	DR26	-99 182.19 12 159.81		
R68	-99 159.80 12 134.44	DR27	-99 174.29 12 127.34		
R68A	-99 166.38 12 121.30	DR27A	-99 177.47 12 121.05		
DR20	-99 041.62 12 533.53	XDR63	-99 041.66 12 451.45		

