

**THE PROVINCE OF  
GAUTENG**



**DIE PROVINSIE  
GAUTENG**

# Provincial Gazette Extraordinary Buitengewone Provinsiale Koerant

Vol. 20

PRETORIA, 29 JULY 2014  
PRETORIA, 29 JULIE 2014

No. 210

**We all have the power to prevent AIDS**



**AIDS  
HELPLINE**

**0800 012 322**

DEPARTMENT OF HEALTH

**Prevention is the cure**

*N.B. The Government Printing Works will not be held responsible for the quality of "Hard Copies" or "Electronic Files" submitted for publication purposes*



**IMPORTANT NOTICE**

The Government Printing Works will not be held responsible for faxed documents not received due to errors on the fax machine or faxes received which are unclear or incomplete. Please be advised that an "OK" slip, received from a fax machine, will not be accepted as proof that documents were received by the GPW for printing. If documents are faxed to the GPW it will be the sender's responsibility to phone and confirm that the documents were received in good order.

Furthermore the Government Printing Works will also not be held responsible for cancellations and amendments which have not been done on original documents received from clients.

**CONTENTS • INHOUD**

<i>No.</i>		<i>Page No.</i>	<i>Gazette No.</i>
<b>GENERAL NOTICE</b>			
2376	Gauteng Transport Infrastructure Act (8/2001): Proclamation of a section of K60 East of Woodmead Drive (P66-1) to N1 Freeway and East of the N1 Freeway .....	3	210

---

## GENERAL NOTICE

---

### NOTICE 2376 OF 2014

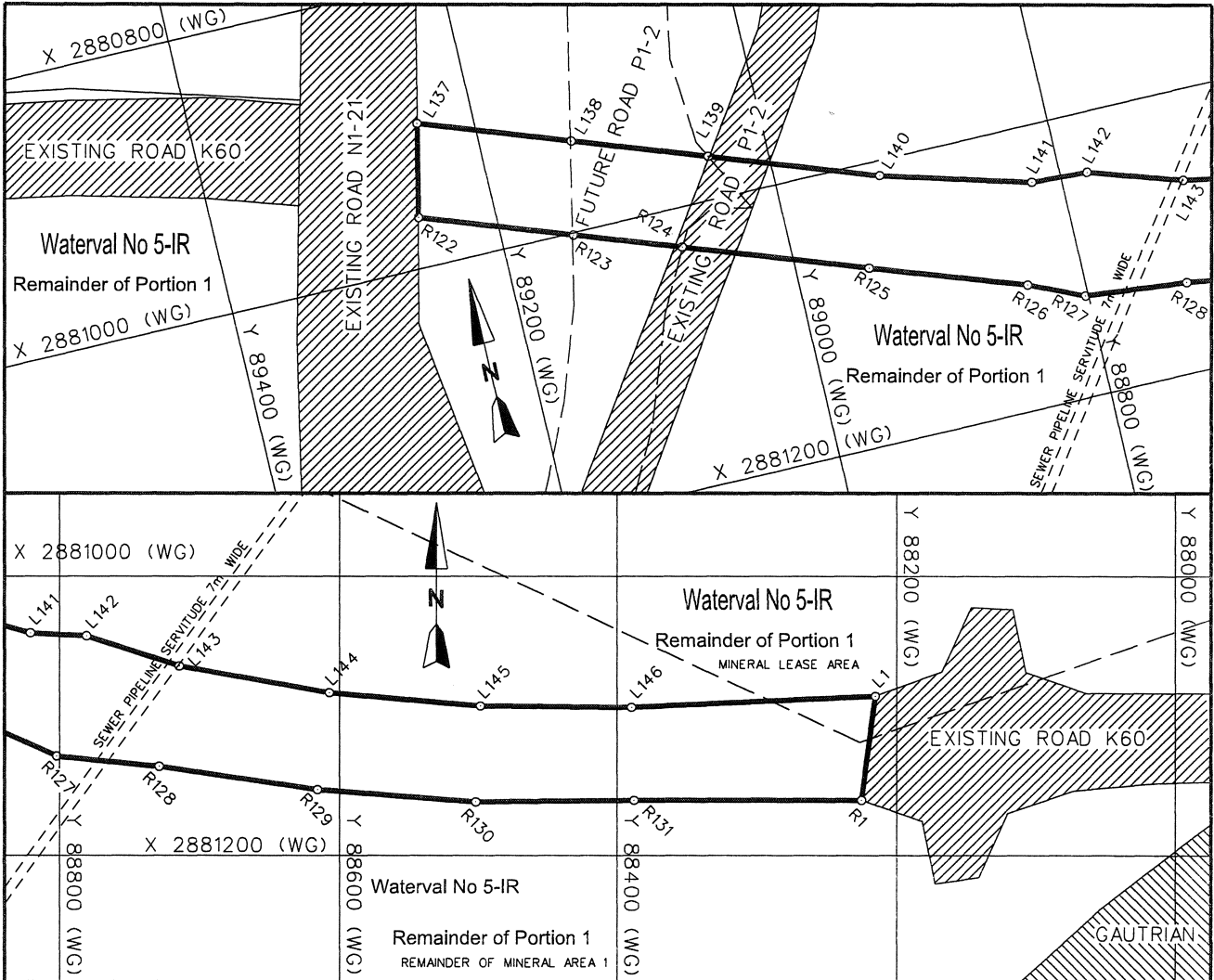
#### **PROCLAMATION OF A SECTION OF K60 EAST OF WOODMEAD DRIVE (P66-1) TO N1 FREEWAY AND EAST OF THE N1 FREEWAY**

In terms of section 11(1)(b) of the Gauteng Transport Infrastructure Act, 2001 (Act No. 8 of 2001), the MEC responsible for provincial roads, hereby proclaims that a portion of provincial road K60 with varying widths, exists on the land as described and indicated by the figures on the accompanying sketch plan.

In terms of section 23(6) of the aforementioned act it is hereby stated that plan GRP 09/05/01 Exp which indicate the land affected by the provincial road in detail, is available for inspection at the office of the Department Roads and Transport, First Floor, South Tower, Sage Life Building , 41 Simmonds Street, Johannesburg, during office hours.

MEC Resolution: 003 of 30 May 2014

Reference: 2/1/1/2/3/1-K60

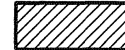


**REFERENCE / VERWYSINGS**

PAD GEPROKLAEMEER  
ROAD PROCLAIMED



BESTAANDE PAD  
EXISTING ROAD



DIE FIGUUR : L137-L146, L1, R1, R131-R122, L137.  
THE FIGURE :

VERTEENWOORDIG DIE PROKLAMASIE VAN DIE BETROKKE GEDEELTE VAN PROVINSIALE PAD K60 OOR DIE RESTAND VAN GEDEELTE 1 VAN DIE PLAAS WATERVAL 5-IR SOOS BEDOEL BY AFKONDIGING DAARVAN IN DIE PROVINSIALE KOERANT EN IN DETAIL GETOON OP PLAN GRP 09/05/01 Exp.

REPRESENTS THE PROCLAMATION OF THE PORTION CONCERNED OF PROVINCIAL ROAD K60 OVER THE REMAINDER OF PORTION 1 OF THE FARM WATERVAL 5-IR AS INTENDED BY PUBLICATION THEREOF IN THE PROVINCIAL GAZETTE AND SHOWN IN DETAIL ON PLAN GRP 09/05/01 Exp.

BUNDEL NR. / FILE NO. 10/4/1/4-K60

**KOÖRDINATE LYS/CO-ORDINATE LIST WG 29° KONST./CONST. Y= +/- 0.00 X= +2 800 000.00**

L1	+88 215.707	+81 085.529	L144	+88 607.456	+81 083.200	R125	+88 948.605	+81 073.488
L137	+89 239.874	+80 897.994	L145	+88 498.852	+81 092.665	R126	+88 840.694	+81 111.543
L138	+89 135.445	+80 935.504	L146	+88 389.846	+81 093.724	R127	+88 802.181	+81 128.689
L139	+89 041.982	+80 969.075	R1	+88 225.461	+81 160.325	R128	+88 729.001	+81 136.112
L140	+88 926.058	+81 010.715	R122	+89 254.350	+80 963.666	R129	+88 615.935	+81 152.685
L141	+88 820.985	+81 040.424	R123	+89 149.329	+81 001.389	R130	+88 502.090	+81 161.589
L142	+88 780.785	+81 042.505	R124	+89 071.725	+81 029.264	R131	+88 388.008	+81 160.498
L143	+88 714.694	+81 064.017						

DIE FIGUUR : L100, U6, L101, L102, T6, L103, L104, S6, L105, L106, R6, L107, L108, Q6, L109, L110,  
 THE FIGURE : P6, L111, L112, N6, L113, L114, M6, L115, L116, L6, L117, L118, K6, L119, L120, J6 L121,  
 L122, H6, L123-L136, R121-R100, L100.

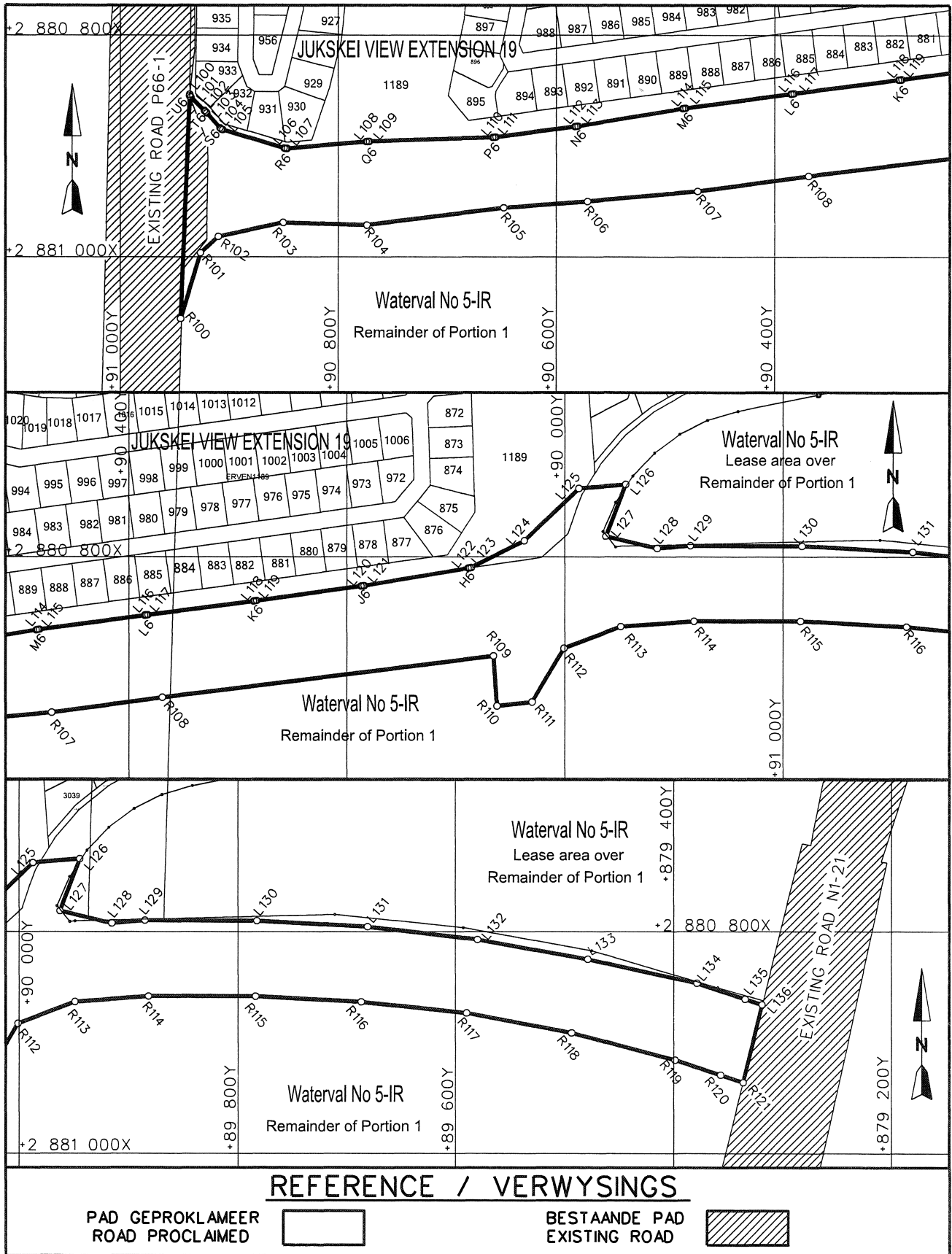
VERTEENWOORDIG DIE PROKLAMASIE VAN DIE BETROKKE GEDEELTE VAN PROVINSIALE  
 PAD K60 OOR ERF 1189 VAN JUJSKEI VIEW UITBREIDING 19, JUJSKEI DRIVE VAN  
 JUJSKEI VIEW UITBREIDING 38 EN RESTAND VAN GEDEELTE 1 VAN DIE PLAAS  
 WATERVAL 5-IR SOOS BEDOEL BY AFKONDIGING DAARVAN IN DIE PROVINSIALE  
 KOERANT EN IN DETAIL GETOON OP PLAN PRS 77/111/2V.

REPRESENTS THE PROCLAMATION OF THE PORTION CONCERNED OF PROVINCIAL ROAD  
 K60 OVER ERVEN 1189 OF JUJSKEI VIEW EXTENSION 19, JUJSKEI DRIVE OF JUJSKEI  
 VIEW EXTENSION 38 AND REMAINDER OF PORTION 1 OF THE FARM WATERVAL 5-IR AS  
 INTENDED BY PUBLICATION THEREOF IN THE PROVINCIAL GAZETTE AND SHOWN IN  
 DETAIL ON PLAN PRS 77/111/2V.

BUNDEL NR. / FILE NO. 10/4/1/4-K60

KOÖRDINATE LYS/CO-ORDINATE LIST WG 29° KONST./CONST. Y= +/- 0.00 X= +2 800 000.00

L100	+90 936.73	+80 853.37	L120	+90 187.28	+80 826.35	R102	+90 910.65	+80 981.49
L101	+90 935.68	+80 855.92	L121	+90 184.31	+80 825.90	R103	+90 851.14	+80 968.94
L102	+90 923.36	+80 867.92	L122	+90 088.56	+80 810.15	R104	+90 774.01	+80 971.24
L103	+90 921.28	+80 870.08	L123	+90 085.60	+80 809.70	R105	+90 647.97	+80 955.55
L104	+90 909.01	+80 883.52	L124	+90 037.05	+80 785.24	R106	+90 571.70	+80 949.88
L105	+90 906.56	+80 885.06	L125	+89 987.35	+80 738.06	R107	+90 470.63	+80 940.61
L106	+90 850.31	+80 901.71	L126	+89 944.41	+80 734.43	R108	+90 369.21	+80 926.91
L107	+90 847.38	+80 902.01	L127	+89 962.71	+80 781.13	R109	+90 065.25	+80 889.55
L108	+90 774.61	+80 895.86	L128	+89 915.47	+80 792.20	R110	+90 062.20	+80 934.67
L109	+90 771.61	+80 895.68	L129	+89 885.06	+80 789.62	R111	+90 030.04	+80 931.06
L110	+90 658.15	+80 892.04	L130	+89 782.92	+80 790.07	R112	+90 001.04	+80 882.73
L111	+90 655.16	+80 891.79	L131	+89 680.96	+80 795.33	R113	+89 948.86	+80 863.01
L112	+90 583.34	+80 882.31	L132	+89 579.46	+80 806.88	R114	+89 881.78	+80 858.06
L113	+90 580.37	+80 881.87	L133	+89 478.84	+80 824.67	R115	+89 784.17	+80 858.08
L114	+90 484.62	+80 866.13	L134	+89 378.71	+80 846.28	R116	+89 686.69	+80 863.08
L115	+90 481.65	+80 865.69	L135	+89 334.88	+80 860.54	R117	+89 589.57	+80 873.12
L116	+90 385.51	+80 852.83	L136	+89 319.18	+80 865.65	R118	+89 493.56	+80 891.08
L117	+90 382.53	+80 852.44				R119	+89 398.94	+80 915.39
L118	+90 286.33	+80 840.07	R100	+90 943.98	+81 056.57	R120	+89 357.15	+80 929.00
L119	+90 283.35	+80 839.67	R101	+90 926.93	+80 996.19	R121	+89 336.69	+80 935.66





**NOTICE – CHANGE OF TELEPHONE NUMBERS: GOVERNMENT PRINTING WORKS**

As the mandated government security printer, providing world class security products and services, Government Printing Works has adopted some of the highly innovative technologies to best serve its customers and stakeholders. In line with this task, Government Printing Works has implemented a new telephony system to ensure most effective communication and accessibility. As a result of this development, our telephone numbers will change with effect from 3 February 2014, starting with the Pretoria offices.

The new numbers are as follows:

- Switchboard : 012 748 6001/6002
- Advertising : 012 748 6205/6206/6207/6208/6209/6210/6211/6212
- Publications Enquiries : 012 748 6052/6053/6058 [GeneralEnquiries@gpw.gov.za](mailto:GeneralEnquiries@gpw.gov.za)
  - Maps : 012 748 6061/6065 [BookShop@gpw.gov.za](mailto:BookShop@gpw.gov.za)
  - Debtors : 012 748 6060/6056/6064 [PublicationsDebtors@gpw.gov.za](mailto:PublicationsDebtors@gpw.gov.za)
  - Subscription : 012 748 6054/6055/6057 [Subscriptions@gpw.gov.za](mailto:Subscriptions@gpw.gov.za)
- SCM : 012 748 6380/6373/6218
- Debtors : 012 748 6236/6242
- Creditors : 012 748 6246/6274

Please consult our website at [www.gpwonline.co.za](http://www.gpwonline.co.za) for more contact details.

The numbers for our provincial offices in Polokwane, East London and Mmabatho will not change at this stage.