

**THE PROVINCE OF
GAUTENG**



**DIE PROVINSIE
GAUTENG**

**Provincial Gazette Extraordinary
Buitengewone Provinsiale Koerant**

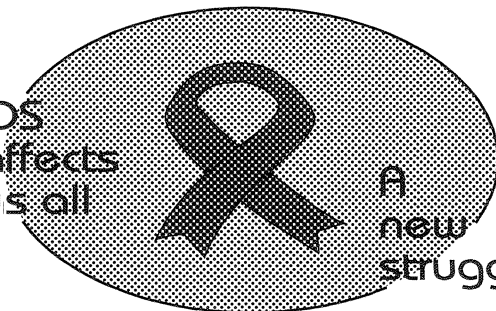
Vol. 20

**PRETORIA, 28 AUGUST
AUGUSTUS 2014**

No. 240

We all have the power to prevent AIDS

AIDS
affects
us all



A
new
struggle

Prevention is the cure

**AIDS
HELPLINE**

0800 012 322

DEPARTMENT OF HEALTH

N.B. The Government Printing Works will not be held responsible for the quality of "Hard Copies" or "Electronic Files" submitted for publication purposes



IMPORTANT NOTICE

The Government Printing Works will not be held responsible for faxed documents not received due to errors on the fax machine or faxes received which are unclear or incomplete. Please be advised that an "OK" slip, received from a fax machine, will not be accepted as proof that documents were received by the GPW for printing. If documents are faxed to the GPW it will be the sender's responsibility to phone and confirm that the documents were received in good order.

Furthermore the Government Printing Works will also not be held responsible for cancellations and amendments which have not been done on original documents received from clients.

CONTENTS • INHOUD

<i>No.</i>		<i>Page No.</i>	<i>Gazette No.</i>
GENERAL NOTICES			
2718	Gauteng Transport Infrastructure Act (8/2001): Proclamation of the increase in width of portions of Provincial Road K46 and closing of portions of existing Provincial Road P79-1, between PWV5 and Diepsloot/N14: District Johannesburg	2	240
2719	do.: Proclamation of access roads in connection with Provincial Road K46 (P79-1), District Johannesburg.....	5	240

GENERAL NOTICES**NOTICE 2718 OF 2014**

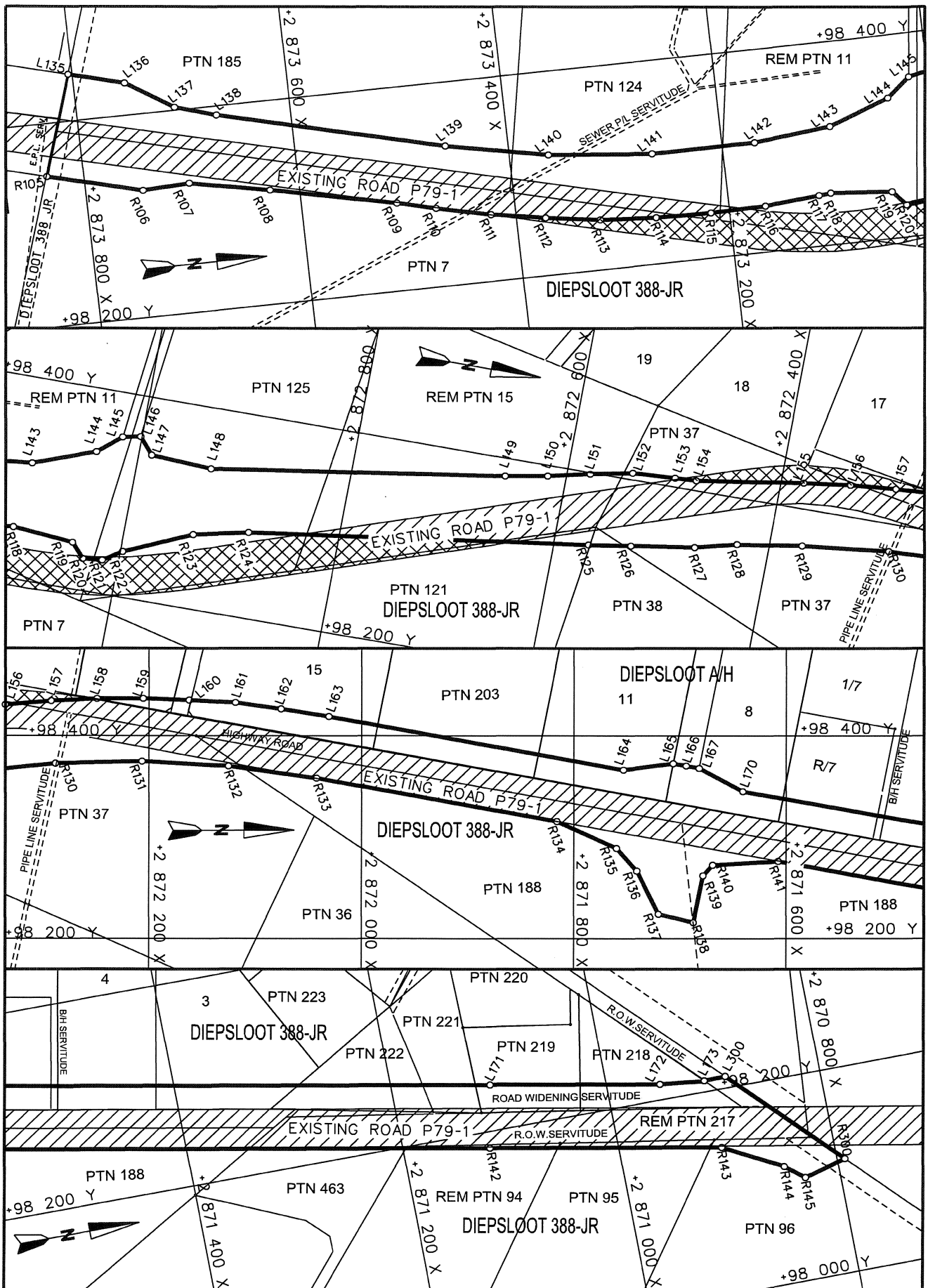
PROCLAMATION OF THE INCREASE IN WIDTH OF PORTIONS OF PROVINCIAL ROAD K46 AND CLOSING OF PORTIONS OF EXISTING PROVINCIAL ROAD P79-1 BETWEEN PWV 5 AND DIEPSLOOT / N14: DISTRICT JOHANNESBURG

In terms of sections 11(1)(b) and 11(1)(d) of the Gauteng Transport Infrastructure Act, 2001 (Act No. 8 of 2001) the MEC for Roads and Transport proclaims that a portion of provincial road K46 exists on the land as described and as indicated on the accompanying sketch plan.

In terms of section 23(6) of the aforementioned act it is hereby declared that boundary beacons demarcating the said increase in width of portions of the above-mentioned provincial road, have been placed and that plan PRS 90/101/6V-7V indicating the land encroached upon is available for inspection by any interested person in the Plan Room of the Department of Roads and Transport, Sage Life Building, 41 Simmonds Street, Johannesburg.

Reference: 2/1/1/2/3/1-K46

MEC Resolutions 012 dated 13 December 2013 and 007 dated 29 July 2014.



REFERENCE / VERWYSINGS

PAD GEPROKLAAMEER
ROAD PROCLAIMED



BESTAANDE PAD
EXISTING ROAD



PAD GESLUIT
ROAD CLOSED



DIE FIGUUR : L135-L167, L170-L173, L300, R300, R145-R105, L135
THE FIGURE :

VERTEENWOORDIG DIE PROKLAMASIE VAN DIE BETROKKE GEDEELTE VAN PROVINSIALE PAD K46 EN SLUITING VAN GEDEELTES VAN DIE BESTAANDE PROVINSIALE PAD P79-1 OOR GEDEELTES 7, 15, 37, 38, 95, 96, 121, 124, 125, 185, 188, 203, 218, 219, 221, 222, 463, RESTANT VAN GEDEELTES 11 & 94 VAN DIE PLAAS DIEPSLOOT 388-JR. HOEWES 3, 4, 8, 11, 15, 16, 17, GEDEELTE 1 VAN HOEWE 7 & RESTANT VAN HOEWE 7 VAN DIEPSLOOT LANDBOUHOEWES SOOS BEDOEL BY AFKONDIGING DAARVAN IN DIE PROVINSIALE KOERANT EN IN DETAIL GETOON OP PLANNE PRS 90/101/6V-7V.

REPRESENTS THE PROCLAMATION OF THE PORTION CONCERNED OF PROVINCIAL ROAD K46 AND CLOSURE OF PORTIONS OF EXISTING PROVINCIAL ROAD P79-1 OVER PORTIONS 7, 15, 37, 38, 95, 96, 121, 124, 125, 185, 188, 203, 218, 219, 221, 222, 463, REMAINDER OF PORTIONS 11 & 94 OF THE FARM DIEPSLOOT 388-JR. HOLDINGS 3, 4, 8, 11, 15, 16, 17, PORTION 1 OF HOLDING 7 & REMAINDER OF HOLDING 7 OF DIEPSLOOT AGRICULTURAL HOLDINGS AS INTENDED BY PUBLICATION THEREOF IN THE PROVINCIAL GAZETTE AND SHOWN IN DETAIL ON PLANS PRS 90/101/6V-7V.

BUNDEL NR. / FILE NO. 10/4/1/4-K46(2)

KOÖRDINATE LYS/CO-ORDINATE LIST WG 29° KONST./CONST. Y- +/- 0.00 X- +2 800 000.00

L135	98	445.776	73	803.703	L162	98	426.760	72	076.291	R120	98	231.468	73	033.472
L136	98	431.832	73	752.358	L163	98	419.270	72	031.115	R121	98	233.215	73	015.529
L137	98	402.998	73	708.113	L164	98	366.867	71	753.351	R122	98	244.998	72	998.117
L138	98	391.170	73	669.850	L165	98	373.251	71	706.360	R123	98	273.312	72	935.695
L139	98	337.413	73	459.177	L166	98	370.939	71	694.075	R124	98	284.673	72	884.830
L140	98	318.092	73	363.694	L167	98	368.628	71	681.791	R125	98	329.345	72	567.939
L141	98	308.447	73	266.344	L170	98	342.579	71	624.708	R126	98	335.423	72	528.404
L142	98	308.616	73	169.484	L171	98	245.043	71	107.830	R127	98	344.541	72	469.100
L143	98	316.083	73	097.242	L172	98	215.374	70	950.605	R128	98	354.573	72	430.172
L144	98	337.757	73	039.695	L173	98	210.904	70	910.741	R129	98	363.897	72	369.539
L145	98	356.078	73	019.241	L300	98	157.220	70	298.620	R130	98	372.916	72	288.047
L146	98	359.954	73	000.614						R131	98	375.025	72	206.703
L147	98	343.682	72	987.995	R105	98	348.270	73	834.726	R132	98	370.300	72	125.469
L148	98	340.331	72	930.822	R106	98	325.086	73	746.571	R133	98	358.346	72	042.611
L149	98	382.423	72	657.039	R107	98	327.299	73	702.661	R134	98	315.589	71	816.030
L150	98	389.489	72	617.656	R108	98	312.384	73	628.031	R135	98	289.231	71	759.944
L151	98	398.533	72	578.576	R109	98	286.590	73	510.768	R136	98	266.787	71	740.774
L152	98	406.587	72	539.344	R110	98	277.337	73	474.506	R137	98	224.254	71	720.307
L153	98	408.713	72	499.201	R111	98	265.728	73	423.676	R138	98	215.960	71	687.678
L154	98	409.775	72	479.129	R112	98	256.782	73	372.914	R139	98	262.169	71	678.551
L155	98	425.177	72	378.944	R113	98	249.399	73	321.866	R140	98	272.663	71	669.448
L156	98	430.929	72	335.365	R114	98	245.520	73	269.383	R141	98	276.278	71	607.706
L157	98	434.774	72	292.255	R115	98	244.320	73	217.802	R142	98	184.119	71	119.326
L158	98	436.805	72	249.004	R116	98	245.201	73	166.200	R143	98	143.695	70	905.106
L159	98	437.017	72	205.705	R117	98	249.656	73	114.783	R144	98	114.083	70	850.654
L160	98	435.411	72	162.436	R118	98	250.870	73	103.496	R145	98	099.566	70	833.040
L161	98	432.985	72	119.173	R119	98	245.763	73	045.787	R300	98	057.110	70	203.140

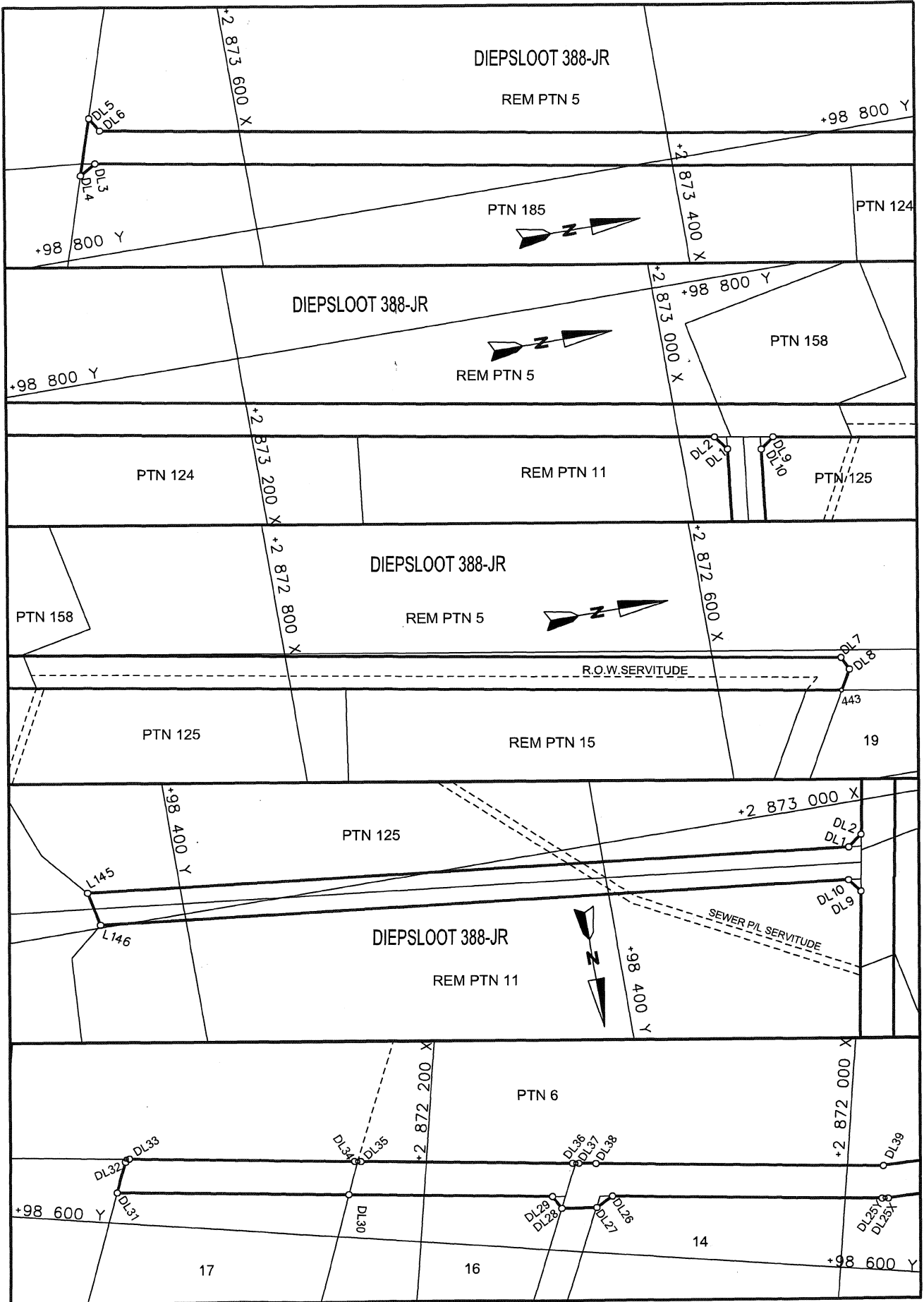
NOTICE 2719 OF 2014**PROCLAMATION OF ACCESS ROADS IN CONNECTION WITH PROVINCIAL ROAD K46 (P79-1) DISTRICT JOHANNESBURG**

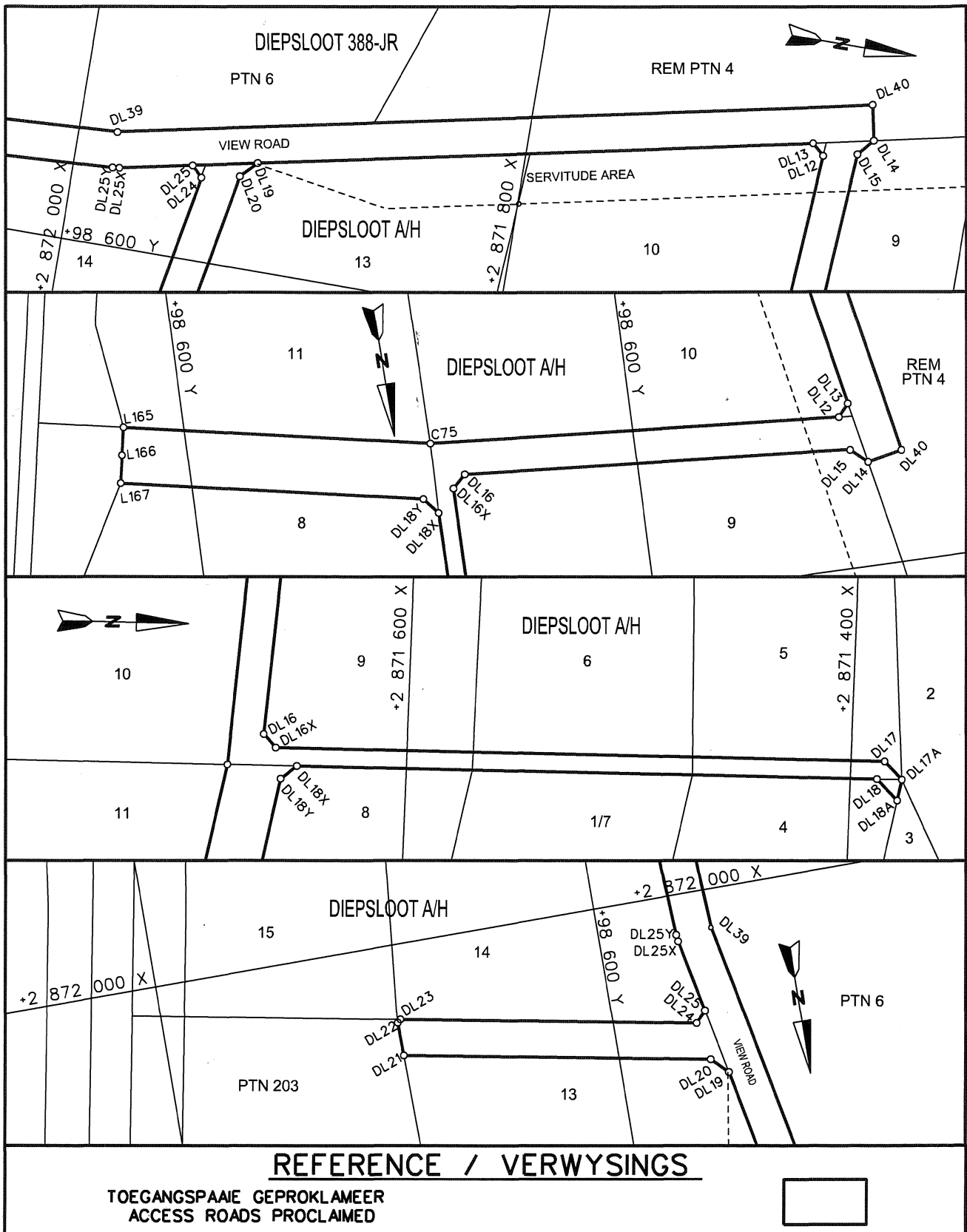
In terms of section 13(1) of the Gauteng Transport Infrastructure Act, 2001 (Act No. 8 of 2001) ("the Act") the MEC proclaims that access roads in connection with K46 exist on the land as described and indicated by the figures on the accompanying sketch plan.

In terms of section 23(6) of the aforementioned act it is hereby stated that boundary beacons demarcating the said access roads, have been placed and that plan PRS 90/101/6V-7V indicating the land encroached upon by virtue of the proclamation of the access roads, are available for inspection by any interested person in the Plan Room of the Department of Roads and Transport, Sage Life Building, 41 Simmonds Street, Johannesburg.

Reference: 2/1/1/2/3/1-K46

MEC Resolution 012 dated 13 December 2013 and 007 dated 29 July 2014





DIE FIGURE : (1) L145. DL1-DL8. 443. DL9 DL10. L146. L145.
 THE FIGURES: (2) L165. C75. DL12-DL13. DL19-DL25. DL25X. DL25Y. DL26-DL40. DL14-DL16.
 DL16X. DL17. DL17A. DL18A. DL18. DL18X. DL18Y. L166-L165.

VERTEENWOORDIG DIE PROKLAMASIE VAN TOEGANGSPAARIE NA PROVINSIALE PAD K46
 OOR GEDEELTES 6, 125, 158, 185 EN RESTANT VAN GEDEELTES 4, 5, 11 VAN
 DIE PLAAS DIEPSLOOT 388-JR. HOEWES 5, 6, 1/7, 8, 9, 10, 11, 13, 14,
 16, 17 VAN DIEPSLOOT LANDBOUHOEWES SOOS BEDOEL BY AFKONDIGING DAARVAN
 IN DIE PROVINSIALE KOERANT EN IN DETAIL GETOON OP PLANNE
 PRS 90/101/6V-7V.

REPRESENT THE PROCLAMATION OF ACCESS ROADS TO PROVINCIAL ROAD K46 OVER
 PORTIONS 6, 125, 158, 185, AND REMAINDER OF PORTIONS 4, 5, 11 OF THE
 FARM DIEPSLOOT 388-JR. HOLDINGS 5, 6, 1/7, 8, 9, 10, 11, 13, 14, 16,
 17 OF DIEPSLOOT AGRICULTURAL HOLDINGS AS INTENDED BY PUBLICATION
 THEREOF IN THE PROVINCIAL GAZETTE AND SHOWN IN DETAIL ON PLANS
 PRS 90/101/6V-7V.

BUNDEL NR. / FILE NO. 10/4/1/4-K46(2)

KOORDINATE LYS/CO-ORDINATE LIST WG. 29° KONST./CONST. Y= +/- 0.00 X= +2 800 000.00

L145	98	356.338	73	018.036	DL14	98	703.628	71	645.176	DL25Y	98	634.818	71	982.316
L146	98	359.766	73	001.563	DL15	98	696.441	71	651.472	DL26	98	627.981	72	110.500
L165	98	373.251	71	706.360	DL16	98	523.277	71	663.571	DL27	98	621.823	72	117.874
L166	98	370.939	71	694.075	DL16X	98	517.326	71	657.989	DL28	98	620.495	72	134.280
L167	98	368.628	71	681.791	DL17	98	521.480	71	385.113	DL29	98	626.154	72	139.187
					DL17A	98	513.602	71	376.989	DL30	98	621.021	72	234.848
DL1	98	716.412	72	978.499	DL18	98	513.430	71	388.303	DL31	98	615.078	72	345.756
DL2	98	723.419	72	983.753	DL18A	98	504.181	71	378.766	DL32	98	629.790	72	342.984
DL3	98	844.516	73	670.258	DL18X	98	509.457	71	649.314	DL33	98	631.344	72	341.214
DL4	98	839.842	73	677.992	DL18Y	98	503.469	71	656.423	DL34	98	637.127	72	233.301
DL5	98	866.654	73	669.429	DL19	98	647.647	71	918.454	DL35	98	637.287	72	230.305
DL6	98	859.896	73	665.346	DL20	98	640.549	71	925.442	DL36	98	642.634	72	130.676
DL7	98	661.405	72	539.974	DL21	98	504.850	71	950.980	DL37	98	643.085	72	127.724
DL8	98	655.117	72	536.978	DL22	98	504.624	71	965.808	DL38	98	643.521	72	119.545
DL9	98	718.514	72	956.150	DL23	98	506.075	71	967.031	DL39	98	650.812	71	982.858
DL10	98	713.607	72	962.711	DL24	98	637.088	71	942.375	DL40	98	719.299	71	648.317
DL12	98	693.010	71	667.503	DL25	98	641.782	71	947.143					
DL13	98	697.793	71	672.964	DL25X	98	635.198	71	979.348	C75	98	508.968	71	680.844