

**THE PROVINCE OF
GAUTENG**



**DIE PROVINSIE
GAUTENG**

Provincial Gazette Extraordinary Buitengewone Provinsiale Koerant

Vol. 21

PRETORIA, 10 JULY
JULIE 2015

No. 297

We all have the power to prevent AIDS



Prevention is the cure

**AIDS
HELPLINE**

0800 012 322

DEPARTMENT OF HEALTH

N.B. The Government Printing Works will not be held responsible for the quality of "Hard Copies" or "Electronic Files" submitted for publication purposes



9771682452005

DISCLAIMER:

Government Printing Works reserves the right to apply the 25% discount to all Legal and Liquor notices that comply with the business rules for notice submissions for publication in gazettes.

National, Provincial, Road Carrier Permits and Tender notices will pay the price as published in the Government Gazettes.

For any information, please contact the eGazette Contact Centre on 012-748 6200 or email info.egazette@gpw.gov.za

CONTENTS • INHOUD

<i>No.</i>		<i>Page No.</i>	<i>Gazette No.</i>
PROCLAMATIONS			
2	Gauteng Transport Infrastructure Act (8/2001): Proclamation of an access road in connection with Provincial Road K57 (P1-1): District Vereeniging.....	3	297
3	do.: Proclamation of the increase and reduction in width of portions of Provincial Road K50: District Pretoria.....	5	297

PROCLAMATIONS

No. 2, 2015

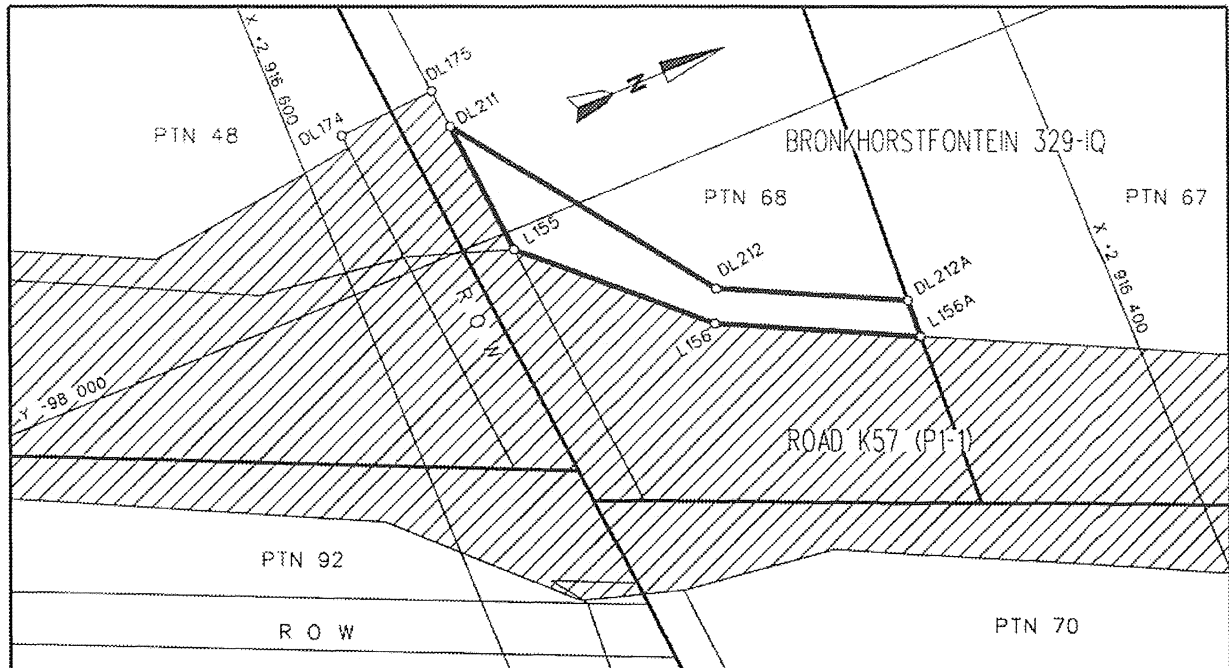
PROCLAMATION OF AN ACCESS ROAD IN CONNECTION WITH PROVINCIAL ROAD K57 (P1-1): DISTRICT VEREENIGING

In terms of section 13(1) of the Gauteng Transport Infrastructure Act, 2001 (Act No. 8 of 2001) ("the Act") the MEC proclaims that an access road in connection with K57 (P1-1) exist on the land as described and indicated by the figures on the accompanying sketch plan.

In terms of section 23(6) of the aforementioned act it is hereby stated that boundary beacons demarcating the said access roads, have been placed and that plan PRS 78/202/15V indicating the land encroached upon by virtue of the proclamation of the access road, and is available for inspection by any interested person in the Plan room of the Department of Roads and Transport, Sage Life Building, 41 Simmonds Street, Johannesburg.

Reference: 2/1/1/2/3/1-K57 (P1-1)

MEC Resolution 011 dated 29 July 2014

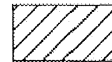


REFERENCE / VERWYSINGS

TOEGANGSPAD GEPROKLAAMEER
ACCESS ROAD PROCLAIMED



BESTAANDE PAD
EXISTING ROAD



DIE FIGUUR :
THE FIGURE: DL211, DL212, DL212A, L156A, L156, L155, DL211.

VERTEENWOORDIG DIE PROKLAMASIE VAN TOEGANGSPAD NA PROVINSIALE PAD K57(P1-1) OOR GEDEELTE 68 VAN DIE PLAAS BRONKHORSTFONTEIN 329-IQ SOOS BEDOEL BY AFKONDIGING DAARVAN IN DIE PROVINSIALE KOERANT EN IN DETAIL GETOON OP PLAN PRS 78/202/15V.

REPRESENT THE PROCLAMATION OF ACCESS ROAD TO PROVINCIAL ROAD K57(P1-1) OVER PORTION 68 OF THE FARM BRONKHORSTFONTEIN 329-IQ AS INTENDED BY PUBLICATION THEREOF IN THE PROVINCIAL GAZETTE AND SHOWN IN DETAIL ON PLAN PRS 78/202/15V.

BUNDEL NR. / FILE NO. 2/1/1/2/3/1-K57

KOORDINATE LYS/CO-ORDINATE LIST L₀ 27° KONST./CONST. Y= +/- 0.00 X= +2 900 000.00

L155	-98 006.03	+16 552.98	DL174	-97 955.72	+16 585.84	DL212	-98 137.15	+16 504.32
L156	-98 046.27	+16 508.42	DL175	-97 953.24	+16 557.64	DL212A	-98 060.89	+16 455.12
L156A	-98 071.93	+16 455.24	DL211	-97 966.31	+16 556.57			

KOORDINATE LYS/CO-ORDINATE LIST WG 27° KONST./CONST. Y= +/- 0.00 X= +2 900 000.00

L155	-97 972.03	+16 847.67	DL174	-97 921.74	+16 880.52	DL212	-98 103.15	+16 799.02
L156	-98 012.27	+16 803.12	DL175	-97 919.26	+16 852.32	DL212A	-98 026.89	+16 749.82
L156A	-98 037.93	+16 749.94	DL211	-97 932.31	+16 851.26			

No. 3, 2015**PROCLAMATION OF THE INCREASE AND REDUCTION IN WIDTH OF PORTIONS OF PROVINCIAL ROAD K50: DISTRICT PRETORIA**

In terms of section 11(2) of the Gauteng Transport Infrastructure Act, 2001 (Act No. 8 of 2001) the MEC for Roads and Transport, proclaims the increase and reduction in width of portions of Provincial road K50 as indicated on the accompanying sketch plan.

In terms of section 23(6) of the aforementioned act it is hereby declared that boundary beacons demarcating the said increase in width of portions of the above-mentioned provincial road, have been placed and that plan GRP04/17/1EXP indicating the land encroached upon is available for inspection by any interested person in the Plan Room of the Department of Roads and Transport, Sage Life Building, 41 Simmonds Street, Johannesburg.

Reference: 2/1/1/2/3/1-K50

MEC Resolution 013 Dated 30 March 2015

REFERENCE / VERWYSINGS

PAD GEPROKLAAMEER
ROAD PROCLAIMED



BESTAANDE PAD
EXISTING ROAD



DIE FIGUUR : L8-L54, R69-R50, 1056, 2400A, 2400, L8.
THE FIGURE :

VERTEENWOORDIG DIE PROKLAMASIE VAN DIE BETROKKE GEDEELTE VAN
PROVINSIALE PAD K50 OOR GEDEELTE 623 DIE RESTANT VAN GEDEELTES 152, 284
& 285 VAN DIE PLAAS GARSFONTEIN 374-JR EN GARSFONTEIN WEG VAN
GARSFONTEIN UITBREIDING 15 SOOS BEDOEL BY AFKONDIGING DAARVAN IN DIE
PROVINSIALE KOERANT EN IN DETAIL GETOON OP PLAN GRP 04/17/1E_{XP}.

REPRESENT THE PROCLAMATION OF THE PORTION CONCERNED OF PROVINCIAL ROAD
K50 OVER PORTION 623 THE REMAINDER OF PORTIONS 152, 484 & 285 OF THE
FARM GARSFONTEIN 374-JR AND GARSFONTEIN ROAD OF GARSFONTEIN EXTENSION
15 AS INTENDED BY PUBLICATION THEREOF IN THE PROVINCIAL GAZETTE AND
SHOWN IN DETAIL ON PLAN GRP 04/17/1E_{XP}.

BUNDEL NR. / FILE NO. 2/1/1/2/3/1-K50

KOÖRDINATE LYS/CO-ORDINATE LIST WG 29° KONST./CONST. Y= +/- 0.00 X= +2 800 000.00

L8	+70	261.575	+55	602.946	L32	+69	997.727	+55	892.760	R50	+70	271.372	+55	667.801
L9	+70	260.753	+55	605.373	L33	+69	996.141	+55	895.306	R51	+70	240.295	+55	716.117
L10	+70	226.243	+55	634.257	L34	+69	985.037	+55	913.128	R52	+70	239.537	+55	718.878
L11	+70	223.790	+55	635.963	L35	+69	983.451	+55	915.674	R53	+70	240.151	+55	736.260
L12	+70	171.517	+55	665.757	L36	+69	981.960	+55	918.067	R54	+70	239.029	+55	738.691
L13	+70	168.714	+55	666.520	L37	+69	980.485	+55	920.677	R55	+70	216.349	+55	756.687
L14	+70	146.634	+55	666.820	L38	+69	974.475	+55	932.451	R56	+70	213.674	+55	757.590
L15	+70	143.841	+55	667.600	L39	+69	973.111	+55	935.123	R57	+70	196.364	+55	757.258
L16	+70	124.097	+55	679.210	L40	+69	963.565	+55	953.826	R58	+70	193.609	+55	758.050
L17	+70	122.817	+55	681.470	L41	+69	962.201	+55	956.499	R59	+70	145.420	+55	789.568
L18	+70	123.001	+55	703.610	L42	+69	952.655	+55	975.202	R60	+70	143.183	+55	791.523
L19	+70	122.302	+55	706.430	L43	+69	951.291	+55	977.874	R61	+70	133.247	+55	802.985
L20	+70	093.607	+55	759.600	L44	+69	941.746	+55	996.578	R62	+70	131.374	+55	805.326
L21	+70	091.967	+55	762.098	L45	+69	940.382	+55	999.250	R63	+70	080.787	+55	873.872
L22	+70	061.643	+55	800.592	L46	+69	939.400	+56	001.174	R64	+70	079.037	+55	876.309
L23	+70	059.784	+55	802.946	L47	+69	938.212	+56	003.922	R65	+70	029.377	+55	947.441
L24	+70	043.857	+55	823.054	L48	+69	932.819	+56	018.987	R66	+69	991.554	+56	027.182
L25	+70	042.002	+55	825.412	L49	+69	931.807	+56	021.811	R67	+69	963.573	+56	110.574
L26	+70	031.530	+55	838.808	L50	+69	907.794	+56	088.877	R68	+69	933.738	+56	193.105
L26	+70	031.530	+55	838.808	L51	+69	906.835	+56	091.719					
L27	+70	029.813	+55	841.263	L52	+69	879.672	+56	177.449					
L28	+70	025.937	+55	847.484	L53	+69	878.849	+56	180.333	1056	+70	272.190	+55	666.530
L29	+70	024.351	+55	850.030	L54	+69	862.350	+56	245.235	2400	+70	273.780	+55	657.870
L30	+70	010.417	+55	872.392						2400A	+70	268.710	+55	662.430
L31	+70	008.831	+55	874.938										

