

**THE PROVINCE OF
GAUTENG**



**DIE PROVINSIE VAN
GAUTENG**

Provincial Gazette Provinsiale Koerant

EXTRAORDINARY • BUITENGEWOON

Selling price • Verkoopprys: **R2.50**
Other countries • Buitelands: **R3.25**

Vol. 22

PRETORIA
7 APRIL 2016
7 APRIL 2016

No. 124

We all have the power to prevent AIDS



Prevention is the cure

**AIDS
HELPLINE**

0800 012 322

DEPARTMENT OF HEALTH

N.B. The Government Printing Works will not be held responsible for the quality of "Hard Copies" or "Electronic Files" submitted for publication purposes

ISSN 1682-4525



9 771682 452005

00124



Government Printing Works

Notice submission deadlines

Government Printing Works has over the last few months implemented rules for completing and submitting the electronic Adobe Forms when you, the customer, submit your notice request.

In line with these business rules, GPW has revised the notice submission deadlines for all gazettes. Please refer to the GPW website www.gpwonline.co.za to familiarise yourself with the new deadlines.

CANCELLATIONS

Don't forget!

Cancellation of notice submissions are accepted by GPW according to the deadlines stated in the table above. Non-compliance to these deadlines will result in your request being failed. **Please pay special attention to the different deadlines for each gazette.**

Please note that any notices cancelled after the cancellation deadline will be published and charged at full cost.

Requests for cancellation must be sent by the original sender of the notice and must accompanied by the relevant notice reference number (N-) in the email body.

AMENDMENTS TO NOTICES

take note!

With effect **from 01 October**, GPW will not longer accept amendments to notices. The cancellation process will need to be followed and a new notice submitted thereafter for the next available publication date.

CUSTOMER INQUIRIES



Many of our customers request immediate feedback/confirmation of notice placement in the gazette from our Contact Centre once they have submitted their notice – While GPW deems it one of their highest priorities and responsibilities to provide customers with this requested feedback and the best service at all times, we are only able to do so once we have started processing your notice submission.

GPW has a **2-working day turnaround time for processing notices** received according to the business rules and deadline submissions.

Please keep this in mind when making inquiries about your notice submission at the Contact Centre.

PROOF OF PAYMENTS

REMINDER

GPW reminds you that all notice submissions **MUST** be submitted with an accompanying proof of payment (PoP) or purchase order (PO). If any PoP's or PO's are received without a notice submission, it will be failed and your notice will not be processed.

When submitting your notice request to submit.egazette@gpw.gov.za, please ensure that a purchase order (GPW Account customer) or proof of payment (non-GPW Account customer) is included with your notice submission. All documentation relating to the notice submission must be in a single email.

A reminder that documents must be attached separately in your email to GPW. (In other words, your email should have an Adobe Form plus proof of payment/purchase order – 2 separate attachments – where notice content is applicable, it should also be a 3rd separate attachment).

REMINDER OF THE GPW BUSINESS RULES

- Single notice, single email – with proof of payment or purchase order.
- All documents must be attached separately in your email to GPW.
- 1 notice = 1 form, i.e. each notice must be on a separate form
- Please submit your notice **ONLY ONCE**.
- Requests for information, quotations and inquiries must be sent to the Contact Centre **ONLY**.
- The notice information that you send us on the form is what we publish. Please do not put any instructions in the email body.

CONTENTS

	<i>Gazette</i>	<i>Page</i>
	<i>No.</i>	<i>No.</i>
PROCLAMATION • PROKLAMASIE		
33	Gauteng Transport Infrastructure Act (8/2001): Proclamation of the widening of portions of Provincial Road K46 (Rose Interchange) and the access road: District Johannesburg..... 124	4

PROCLAMATION • PROKLAMASIE

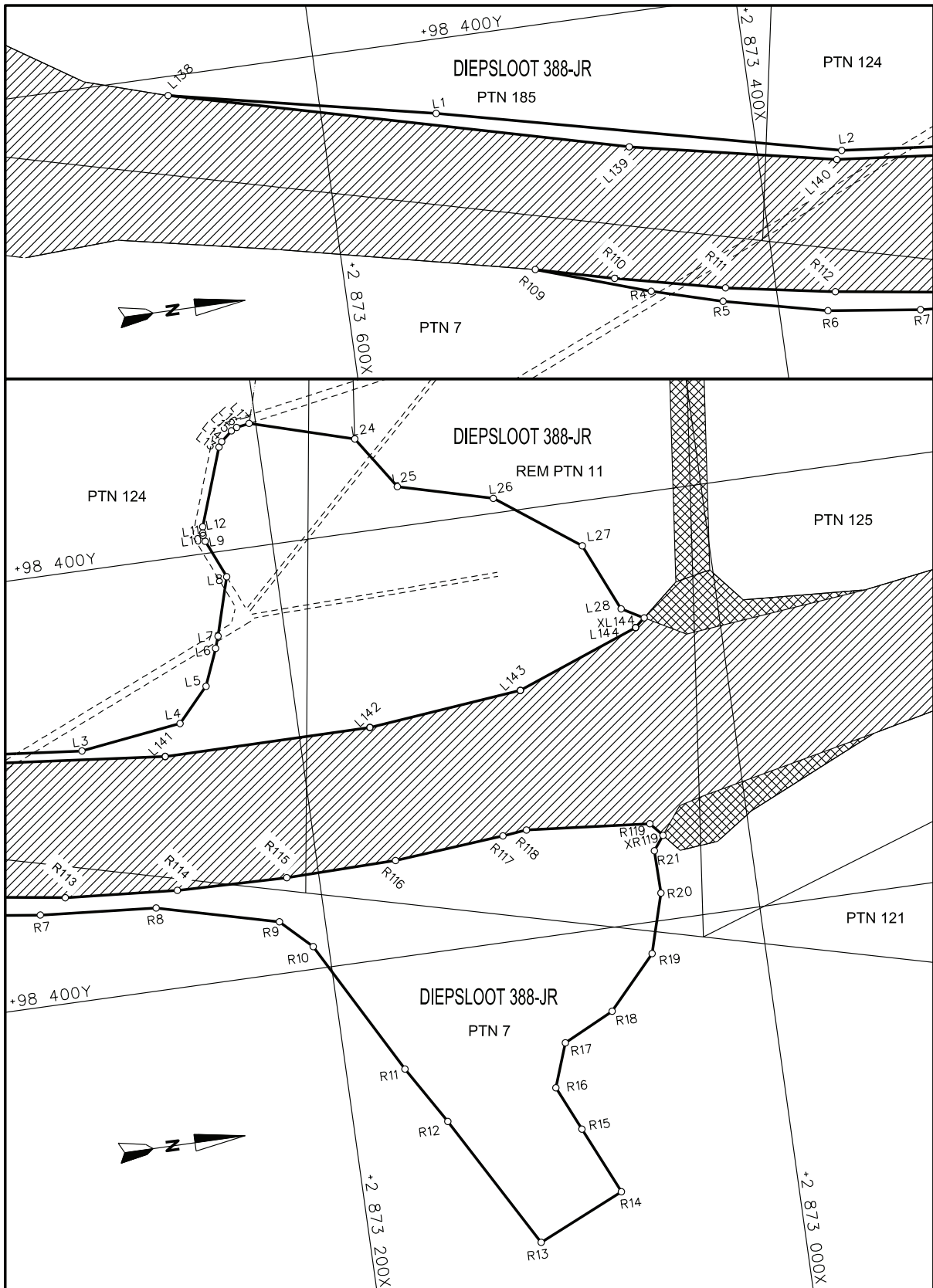
PROCLAMATION 33 OF 2016**PROCLAMATION OF THE WIDENING OF PORTIONS OF PROVINCIAL ROAD K46 (ROSE INTERCHANGE) AND THE ACCESS ROAD: DISTRICT JOHANNESBURG**

In terms of section 11(1)(b) of the Gauteng Transport Infrastructure Act, 2001 (Act 8 of 2001) (The Act) the MEC hereby proclaims the widening of Portions of Provincial Road K46 over Portions 3,124, 185 and Remainder of Portion 11 of the farm Diepsloot 388 JR and the access road over Portion 124 and the Remainder of Portion 11 of the farm Diepsloot 388 JR. It is hereby notified for general information that the portion of the aforementioned road is no longer a provincial road for the purposes of the said Act as from the date of this Notice.

Details in the above regard can be obtained from the offices of the Department of Roads and Transport at Sage Life Building, 41 Simmonds Street, Johannesburg or Private Bag X83, Marshalltown 2107, Tel: (011) 355 7050 Fax: (011) 355 7235.

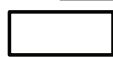
MEC Resolution 003 dated 11 February 2016

Reference: 2/1/1/2/3/1 –K46

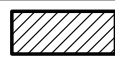


REFERENCE / VERWYSINGS

PAD GEPROKLAAMEER
ROAD PROCLAIMED



BESTAANDE PAD
EXISTING ROAD



PAD GESLUIT
ROAD CLOSED



DIE FIGURE: (1) L138, L1-L17, L24-L28, L144X, L144-L138.
THE FIGURES: (2) R109-R119, R119X, R21-R4, R109.

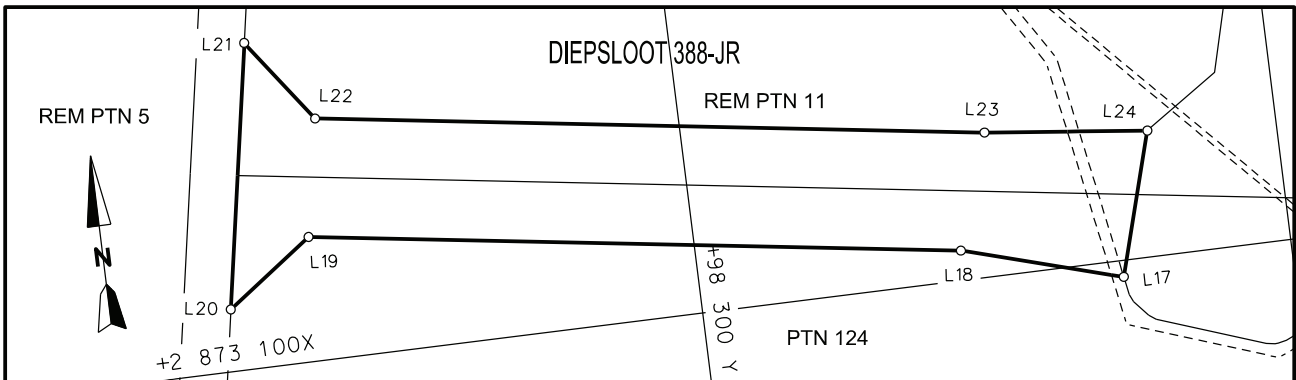
VERTEENWOORDIG DIE PROKLAMASIE VAN DIE VERBREDING VAN DIE BETROKKE GEDEELTE VAN PROVINSIALE PAD K46 OOR GEDEELTES 3, 124, 185 EN RESTANT VAN GEDEELTE 11 VAN DIE PLAAS DIEPSLOOT 388-JR. SOOS BEDOEL BY AFKONDIGING DAARVAN IN DIE PROVINSIALE KOERANT EN IN DETAIL GETOON OP PLAN PRS 90/101/6V.

REPRESENT THE PROCLAMATION OF THE WIDENING OF THE PORTION CONCERNED OF PROVINCIAL ROAD K46 OVER PORTIONS 3, 124, 185 AND REMAINDER OF PORTION 11 OF THE FARM DIEPSLOOT 388-JR. AS INTENDED BY PUBLICATION THEREOF IN THE PROVINCIAL GAZETTE AND SHOWN IN DETAIL ON PLAN PRS 90/101/6V.

BUNDEL NR. / FILE NO. 10/4/1/4-K46(2)

KOORDINATE LYS/CO-ORDINATE LIST WG 29 KONST./CONST. Y= +/- 0.00 X= +2 800 000.00

L1	98	365.379	73	546.425	L28	98	347.254	73	045.027	R14	98	076.744	73	082.699
L2	98	321.903	73	360.638	L138	98	391.170	73	669.850	R15	98	108.349	73	096.957
L3	98	316.332	73	304.423	L139	98	337.413	73	459.177	R16	98	129.235	73	106.380
L4	98	322.713	73	257.136	L140	98	318.092	73	363.694	R17	98	149.499	73	099.074
L5	98	338.287	73	242.663	L141	98	308.447	73	266.344	R18	98	161.142	73	075.270
L6	98	355.274	73	235.748	L142	98	308.616	73	169.484	R19	98	185.285	73	053.021
L7	98	360.780	73	233.828	L143	98	316.083	73	097.242	R20	98	212.837	73	044.952
L8	98	387.819	73	225.929	L144	98	337.757	73	039.695	R21	98	232.877	73	045.259
L9	98	405.641	73	233.588	XL144	98	341.790	73	035.192	R109	98	286.590	73	510.768
L10	98	408.518	73	234.231						R110	98	277.337	73	474.506
L11	98	409.634	73	234.269	R4	98	268.850	73	458.135	R111	98	265.728	73	423.676
L12	98	412.547	73	233.819	R5	98	259.566	73	425.481	R112	98	256.782	73	372.914
L13	98	448.426	73	221.126	R6	98	248.426	73	377.395	R113	98	249.399	73	321.866
L14	98	450.808	73	219.479	R7	98	242.868	73	334.375	R114	98	245.520	73	269.383
L15	98	455.192	73	214.294	R8	98	238.657	73	280.168	R115	98	244.320	73	217.802
L16	98	456.420	73	211.671	R9	98	224.208	73	223.877	R116	98	245.201	73	166.200
L17	98	457.490	73	205.575	R10	98	210.554	73	209.823	R117	98	249.656	73	114.783
L24	98	443.472	73	157.580	R11	98	147.750	73	175.150	R118	98	250.870	73	103.496
L25	98	418.548	73	140.896	R12	98	120.646	73	158.720	R119	98	245.763	73	045.787
L26	98	406.885	73	097.125	R13	98	058.463	73	123.220	XR119	98	239.388	73	040.295
L27	98	379.072	73	058.923										



REFERENCE / VERWYSINGS

TOEGANGSPAD GEPROKLAMEER
ACCESS ROAD PROCLAIMED



DIE FIGUUR : L17-L24. L17.
THE FIGURE:

VERTEENWOORDIG DIE PROKLAMASIE VAN 'n TOEGANGSPAD NA PROVINSIALE PAD K46 OOR GEDEELTE 124 EN RESTANT VAN GEDEELTE 11 VAN DIE PLAAS DIEPSLOOT 388-JR. SOOS BEDOEL BY AFKONDIGING DAARVAN IN DIE PROVINSIALE KOERANT EN IN DETAIL GETOON OP PLAN PRS 90/101/6V.

REPRESENT THE PROCLAMATION OF AN ACCESS ROAD TO PROVINCIAL ROAD K46 OVER PORTION 124, AND REMAINDER OF PORTION 11 OF THE FARM DIEPSLOOT 388-JR. AS INTENDED BY PUBLICATION THEREOF IN THE PROVINCIAL GAZETTE AND SHOWN IN DETAIL ON PLAN PRS 90/101/6V.

BUNDEL NR. / FILE NO. 10/4/1/4-K46(2)

COORDINATE LYS/CO-ORDINATE LIST WG 29 KONST./CONST. Y= +/- 0.00 X= +2 800 000.00

L17	98 457.490	73 205.575	L20	98 757.879	73 179.071	L23	98 498.102	73 151.416
L18	98 510.922	73 189.965	L21	98 742.242	73 090.393	L24	98 443.472	73 157.580
L19	98 728.805	73 158.061	L22	98 721.636	73 118.684			

Printed by the Government Printer, Bosman Street, Private Bag X85, Pretoria, 0001,
for the **Gauteng Provincial Administration**, Johannesburg.

Contact Centre Tel: 012-748 6200. eMail: info.egazette@gpw.gov.za
Publications: Tel: (012) 748 6053, 748 6061, 748 6065