

***THE PROVINCE OF
GAUTENG***

***DIE PROVINSIE VAN
GAUTENG***

**Provincial Gazette
Provinsiale Koerant**
EXTRAORDINARY • BUITENGEWOON

Selling price • Verkoopprijs: **R2.50**
Other countries • Buitelands: **R3.25**

Vol. 25

PRETORIA
24 OCTOBER 2019
24 OKTOBER 2019

No. 339

CONTENTS

Gazette *Page*
No. *No.*

PROCLAMATION • PROKLAMASIE

119	Gauteng Transport Infrastructure Act (8/2001): Proclamation of provincial road K33 between K52 (P39-1) and D1027 and the access roads: District: Johannesburg/Mogale	339	4
-----	--	-----	---

PROCLAMATION • PROKLAMASIE

PROCLAMATION 119 OF 2019**PROCLAMATION OF PROVINCIAL ROAD K33 BETWEEN K52 (P39-1) AND D1027 AND THE ACCESS ROADS: DISTRICT: JOHANNESBURG/MOGALE**

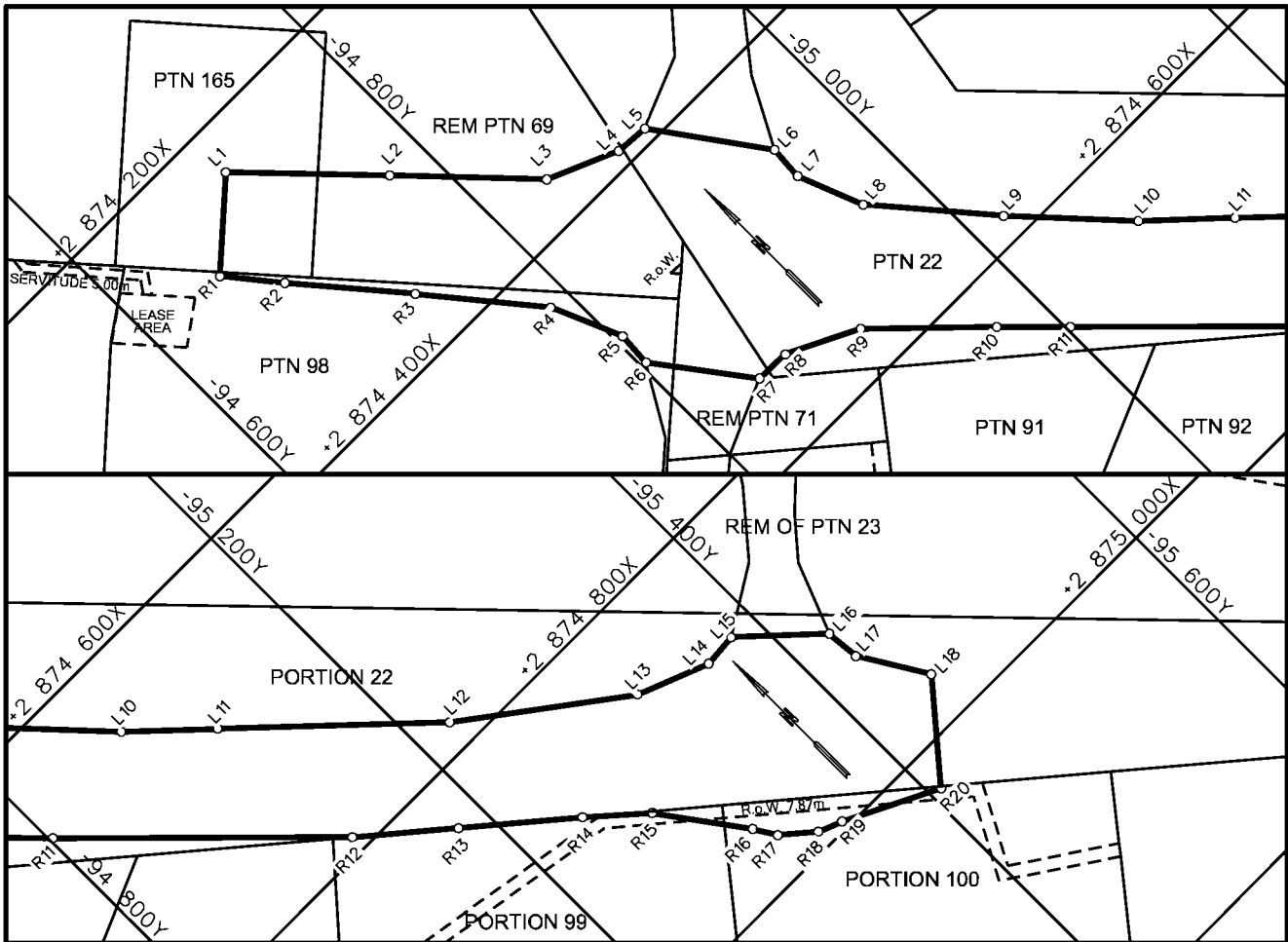
In terms of the Gauteng Transport Infrastructure Act, 2001 (Act No. 8 of 2001) the MEC responsible for provincial roads in Gauteng hereby, proclaims that the road K33 between K52 (P39-1) and D1027 will exist on the land in terms of section 11(1)(b) as a provincial road, and proclaim the access roads in connection with K33 in terms of section 13 of the Act indicated on the accompanying sketch plans.

In terms of section 23(6) of the aforementioned act it is hereby declared that boundary beacons demarcating the said increase in width and access roads of portions of the above-mentioned provincial road, have been placed and that plan GRP17/31/1Exp indicating the land encroached upon is available for inspection by any interested person in the Plan Room of the Department of Roads and Transport, 1215 Nico Smit street, Koedoespoort, Moregloed Pretoria.

Reference: 2/1/1/7/1-K33

MEC Resolution: 002

Dated: 01 October 2019



REFERENCE

ROAD PROCLAIMED



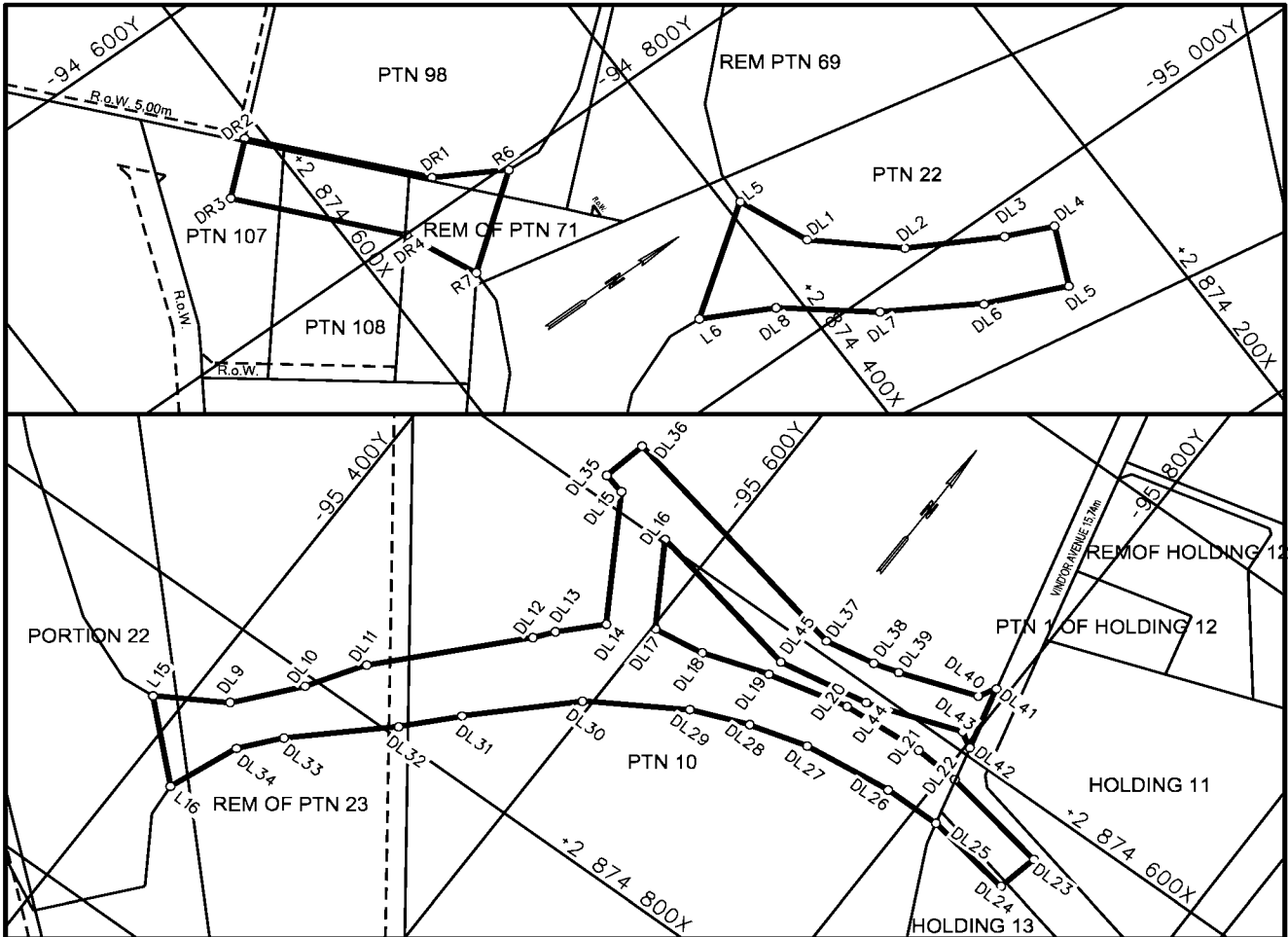
THE FIGURE : L1-L18, R20-R1, L1.

REPRESENTS THE PROCLAMATION OF THE PORTION CONCERNED OF PROVINCIAL ROAD K33 OVER PORTIONS 22, 98, 99, 100, 165, REMAINDER OF PORTIONS 69 & 71 OF THE FARM NIETGEDACHT 535-JQ AS INTENDED BY PUBLICATION THEREOF IN THE PROVINCIAL GAZETTE AND SHOWN IN DETAIL ON PLANS GRP 17/31/1EXP

BUNDEL NR. / FILE NO. 10/4/1/4-K33

KOÖRDINATE LYS/CO-ORDINATE LIST WG 27° KONST./CONST. Y= +/- 0.00 X= +2 800 000.00

L1	-94 704.474	+74 228.961	L14	-95 360.924	+74 869.337	R8	-94 867.539	+74 549.615
L2	-94 773.895	+74 301.049	L15	-95 382.067	+74 867.526	R9	-94 910.986	+74 571.205
L3	-94 839.912	+74 370.812	L16	-95 426.013	+74 908.487	R10	-94 970.610	+74 629.261
L4	-94 883.426	+74 389.666	L17	-95 427.814	+74 929.624	R11	-95 002.199	+74 661.047
L5	-94 904.292	+74 391.216	L18	-95 452.557	+74 970.094	R12	-95 131.931	+74 790.187
L6	-94 951.093	+74 456.659	R1	-94 656.886	+74 271.256	R13	-95 181.743	+74 832.111
L7	-94 949.772	+74 477.867	R2	-94 682.089	+74 302.372	R14	-95 239.890	+74 881.050
L8	-94 965.799	+74 518.476	R3	-94 733.739	+74 363.497	R15	-95 272.104	+74 909.551
L9	-95 021.431	+74 584.085	R4	-94 786.261	+74 427.861	R16	-95 308.316	+74 959.687
L10	-95 077.626	+74 644.692	R5	-94 804.943	+74 471.461	R17	-95 316.564	+74 973.177
L11	-95 120.693	+74 685.079	R6	-94 803.551	+74 492.908	R18	-95 335.680	+74 989.289
L12	-95 223.638	+74 782.403	R7	-94 845.856	+74 548.901	R19	-95 350.372	+74 995.132
L13	-95 316.848	+74 851.807				R20	-95 407.447	+75 023.618



REFERENCE

ROAD PROCLAIMED 

THE FIGURES : DR2, DR1, R6, R7, DR4-DR2.

L5, DL1-DL8, L6,L5.

L15, DL9-DL15,DL35-DL45, DL16-DL34, L16,L15.

REPRESENTS THE PROCLAMATION OF ACCESS ROADS TO PROVINCIAL ROAD K33 OVER PORTIONS 10, 22, 98, 107, 108, REMAINDER OF PORTIONS 23 & 71 OF THE FARM NIETGEDACHT 535-JQ AND HOLDING 13 OF NORTH CHAMPAGNE ESTATES A/H AS INTENDED BY PUBLICATION THEREOF IN THE PROVINCIAL GAZETTE AND SHOWN IN DETAIL ON PLANS GRP 17/31/1EXP

BUNDEL NR. / FILE NO. 10/4/1/4-K33

KOÖRDINATE LYS/CO-ORDINATE LIST WG 27° KONST./CONST. Y= +/- 0.00 X= +2 800 000.00

L5	-94 904.292	+74 391.216	DL13	-95 554.157	+74 686.501	DL32	-95 514.648	+74 793.559
L6	-94 951.093	+74 456.659	DL14	-95 576.236	+74 663.790	DL33	-95 462.877	+74 841.471
L15	-95 382.067	+74 867.526	DL15	-95 531.800	+74 589.062	DL34	-95 443.543	+74 864.411
L16	-95 426.013	+74 908.487	DL16	-95 571.828	+74 597.954	DL35	-95 518.203	+74 585.691
R6	-94 803.551	+74 492.908	DL17	-95 602.277	+74 648.276	DL36	-95 524.120	+74 557.464
R7	-94 845.856	+74 548.901	DL18	-95 634.491	+74 643.608	DL37	-95 690.685	+74 591.793
DL1	-94 948.515	+74 372.933	DL19	-95 675.522	+74 630.307	DL38	-95 722.639	+74 586.183
DL2	-94 988.435	+74 327.808	DL20	-95 726.592	+74 618.530	DL39	-95 738.514	+74 581.698
DL3	-95 018.409	+74 274.311	DL21	-95 778.837	+74 615.154	DL40	-95 786.713	+74 565.099
DL4	-95 031.160	+74 245.710	DL22	-95 808.032	+74 617.223	DL41	-95 792.691	+74 554.475
DL5	-95 067.834	+74 261.679	DL23	-95 877.812	+74 630.010	DL42	-95 802.792	+74 595.019
DL6	-95 046.541	+74 309.675	DL24	-95 872.330	+74 656.101	DL43	-95 792.963	+74 589.388
DL7	-95 012.882	+74 364.854	DL25	-95 815.614	+74 646.968	DL44	-95 734.289	+74 609.579
DL8	-94 973.177	+74 414.531	DL26	-95 779.208	+74 647.151	DL45	-95 676.535	+74 619.569
DL9	-95 422.537	+74 842.783	DL27	-95 722.440	+74 653.734	DR1	-94 779.543	+74 533.817
DL10	-95 452.826	+74 806.845	DL28	-95 685.774	+74 663.771	DR2	-94 691.210	+74 611.032
DL11	-95 474.781	+74 773.037	DL29	-95 650.603	+74 677.883	DR3	-94 717.535	+74 641.148
DL12	-95 545.446	+74 697.689	DL30	-95 594.708	+74 712.757	DR4	-94 800.598	+74 568.540
			DL31	-95 541.402	+74 764.809			