

**THE PROVINCE OF  
GAUTENG**



**DIE PROVINSIE VAN  
GAUTENG**

# Provincial Gazette Provinsiale Koerant

**EXTRAORDINARY • BUITENGEWOON**

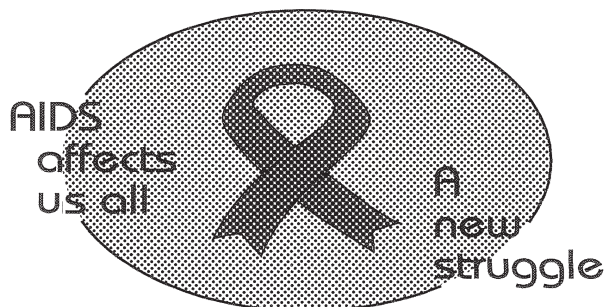
Selling price • Verkoopprys: **R2.50**  
Other countries • Buitelands: **R3.25**

Vol. 26

**PRETORIA**  
23 JULY 2020  
23 JULIE 2020

**No. 118**

**We all have the power to prevent AIDS**



**Prevention is the cure**

**AIDS  
HELPLINE**

**0800 012 322**

DEPARTMENT OF HEALTH

**N.B. The Government Printing Works will not be held responsible for the quality of "Hard Copies" or "Electronic Files" submitted for publication purposes**

ISSN 1682-4525



9 771682 452005

00118



**IMPORTANT NOTICE:**

**THE GOVERNMENT PRINTING WORKS WILL NOT BE HELD RESPONSIBLE FOR ANY ERRORS THAT MIGHT OCCUR DUE TO THE SUBMISSION OF INCOMPLETE / INCORRECT / ILLEGIBLE COPY.**

**No FUTURE QUERIES WILL BE HANDLED IN CONNECTION WITH THE ABOVE.**

**CONTENTS**

	<i>Gazette</i>	<i>Page</i>
	<i>No.</i>	<i>No.</i>
<b>PROCLAMATION • PROKLAMASIE</b>		
53		
Gauteng Transport Infrastructure Act (8/2001): This notice replace Gazette 117 published on 22 July 2020: Proclamation of provincial road K56 and access roads in connection therewith between K46 (William Nicol) and P71-1 (Main Road) (4.4km) and the extension of Erling Road from Dorothy Road to K56 (1.3km): District Johannesburg.....	118	3

---

**PROCLAMATION • PROKLAMASIE**

---

**PROCLAMATION 53 OF 2020**

*This notice to replace Gazette 117 published on 22 July 2020.*

**PROCLAMATION OF PROVINCIAL ROAD K56 AND ACCESS ROADS IN CONNECTION THEREWITH BETWEEN K46 (WILLIAM NICOL) AND P71-1 (MAIN ROAD) (4.4KM) AND THE EXTENSION OF ERLING ROAD FROM DOROTHY ROAD TO K56 (1.3KM): DISTRICT JOHANNESBURG**

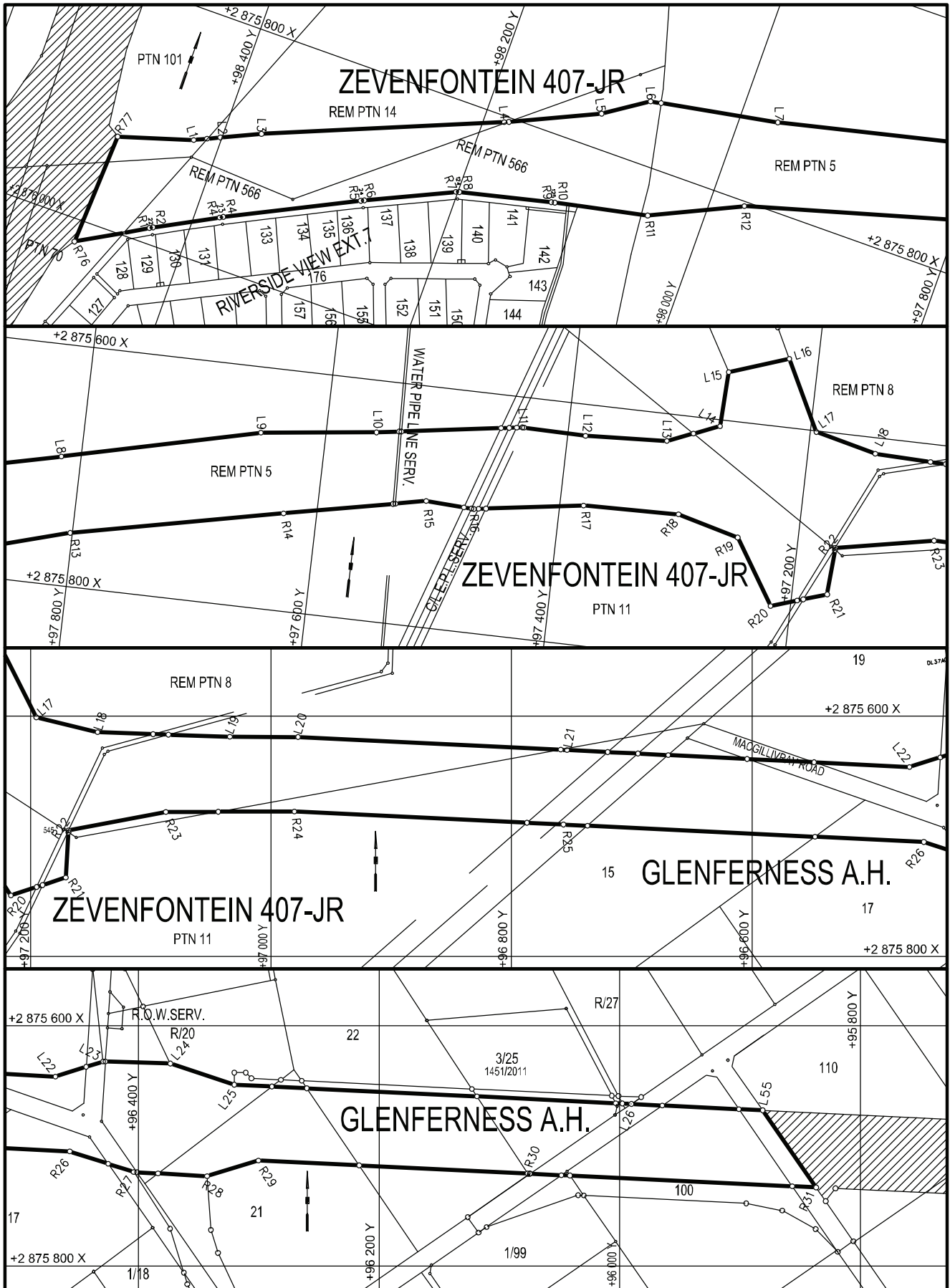
In terms of sections 11(1)(b) and 13 of the Gauteng Transport Infrastructure Act, 2001 (Act 8 of 2001) the MEC responsible for provincial roads, hereby proclaims that provincial road K56 and access roads in connection therewith between K46 (William Nicol) and P71-1 (Main road) (4.4km) and the extension of Erling road from Dorothy road to K56 (1.3km) shall exist on the land as described and indicated by the figures on the accompanying sketch plans.

In terms of section 23(6) of the aforementioned act it is hereby stated that plans GRP01/05/3 – 4 Exp which indicate the land affected by the provincial road in detail, are available for inspection at the office of the Department Roads and Transport, 1215 Nico Smit Street, Koedoespoort, Plan room, Pretoria during office hours.

**Reference: 2/1/1/2/3/1 – K56**

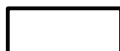
**MEC Resolution nr 002**

**Dated 31 January 2020**



**REFERENCE**

ROAD PROCLAIMED



EXISTING ROAD



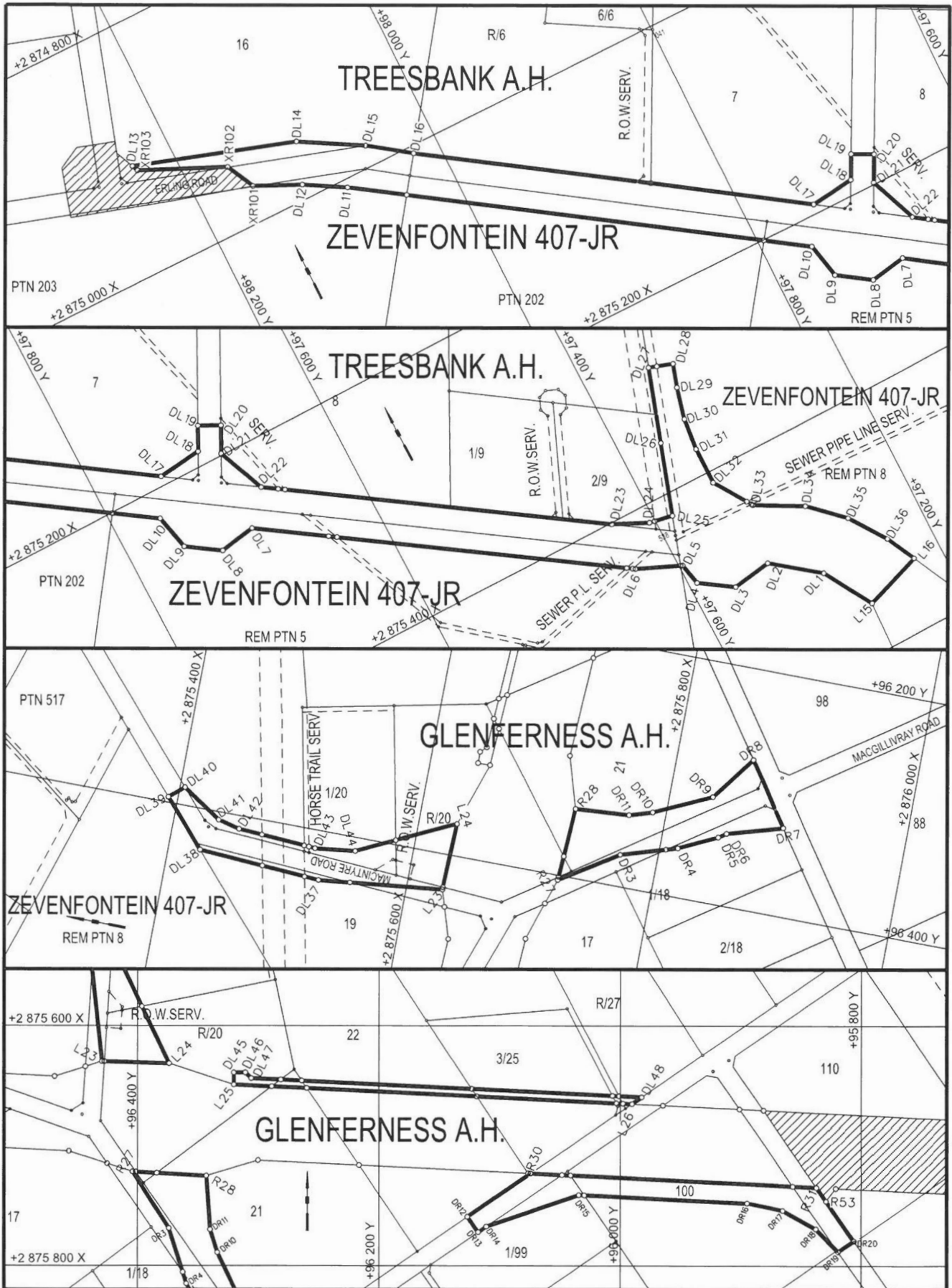
THE FIGURE : R77. L1-L26. L55. R31-R10. 125. R9. R8. 124. R7. R6. 24. R5.  
R4. 23. R3. R2. 22. R1 R76. R77.

REPRESENTS THE PROCLAMATION OF THE PORTION CONCERNED OF PROVINCIAL ROAD K56 OVER PORTIONS 11, 70, 101, REMAINDER OF PORTIONS 5, 8, 14, 566 OF THE FARM ZEVENFONTEIN 407-JR, HOLDING 15, 17, 19, 21, 22, 100, REMAINDER HOLDING 20 AND PORTION 3 OF HOLDING 25 OF GLENFERNESS A/H AS INTENDED BY PUBLICATION THEREOF IN THE PROVINCIAL GAZETTE AND SHOWN IN DETAIL ON PLANS GRP 18/13/3EXP & 4EXP

FILE NO. 1/1/12/3/1-K56

KOÖRDINATE LYS/CO-ORDINATE LIST WG 29° KONST./CONST. Y= +/- 0.00 X= +2 800 000.00

L1	+98 421.425	+75 905.715	L23	+96 429.543	+75 629.882	R17	+97 380.279	+75 683.985
L2	+98 401.303	+75 896.273	L24	+96 373.559	+75 631.564	R18	+97 301.001	+75 682.180
L3	+98 370.053	+75 882.008	L25	+96 320.346	+75 649.152	R19	+97 249.922	+75 695.708
L4	+98 183.229	+75 805.115	L26	+95 990.732	+75 665.116	R20	+97 216.290	+75 749.123
L5	+98 109.405	+75 771.252	L55	+95 881.116	+75 670.369	R21	+97 170.634	+75 734.173
L6	+98 074.434	+75 747.913				R22	+97 168.266	+75 694.916
L7	+97 968.859	+75 728.904	R1	+98 431.524	+75 986.941	R23	+97 087.442	+75 679.670
L8	+97 816.225	+75 693.041	R2	+98 428.907	+75 985.474	R24	+96 980.569	+75 679.337
L9	+97 653.781	+75 654.510	R3	+98 379.503	+75 959.136	R25	+96 756.831	+75 690.143
L10	+97 558.263	+75 643.184	R4	+98 376.835	+75 957.764	R26	+96 457.181	+75 704.614
L11	+97 438.190	+75 625.222	R5	+98 273.665	+75 906.658	R27	+96 404.036	+75 721.754
L12	+97 385.286	+75 626.202	R6	+98 270.960	+75 905.361	R28	+96 343.037	+75 725.130
L13	+97 317.707	+75 622.711	R7	+98 201.693	+75 873.241	R29	+96 300.363	+75 712.189
L14	+97 275.105	+75 605.496	R8	+98 198.872	+75 872.266	R30	+96 074.627	+75 723.091
L15	+97 272.953	+75 559.924	R9	+98 124.120	+75 854.641	R31	+95 836.667	+75 734.584
L16	+97 224.204	+75 543.166	R10	+98 121.191	+75 853.993			
L17	+97 195.061	+75 601.020	R11	+98 044.810	+75 838.176	22	+98378.179	+75 958.430
L18	+97 144.233	+75 613.424	R12	+97 971.849	+75 803.791	23	+97462.957	+75 381.360
L19	+97 034.175	+75 617.209	R13	+97 801.607	+75 755.349	24	+98272.321	+75 905.992
L20	+96 977.581	+75 617.409	R14	+97 627.288	+75 718.911	124	+98200.332	+75 872.610
L21	+96 753.840	+75 628.215	R15	+97 510.658	+75 695.163	125	+98122.660	+75 854.297
L22	+96 469.191	+75 642.356	R16	+97 470.477	+75 697.218			





**REFERENCE**

ROAD PROCLAIMED



EXISTING ROAD



- THE FIGURES :
- (1) L15,DL1-DL12, XR101-XR103, DL13-DL36, L16, L15.
  - (2) L23, DL37-DL44, L24, L23.
  - (3) R27, R28, DR11-DR3, R27.
  - (4) L25,DL45-DL48, L26, L25.
  - (5) R30, R31, R53, DR20-DR12, R30.

REPRESENTS THE PROCLAMATION OF ACCESS ROADS TO PROVINCIAL ROAD K56 OVER PORTIONS 202, 203, REMAINDER OF PORTIONS 5, 8, OF THE FARM ZEVENFONTEIN 407-JR, HOLDING 7, 8, PORTION 2 OF HOLDING 9 OF TREEBANK A/H HOLDING 19, 21, 22, 23, 100, 102, PORTION 1 OF HOLDING 18, PORTION 1 OF HOLDING 20, REMAINDER OF HOLDING 20, PORTION 3 OF HOLDING 25, REMAINDER OF HOLDING 27, PORTION 1 OF HOLDING 99 OF GLENFERNESS A/H AS INTENDED BY PUBLICATION THEREOF IN THE PROVINCIAL GAZETTE AND SHOWN IN DETAIL ON PLANS GRP 18/13/1EXP, 2EXP & 4EXP

FILE NO. 1/1/12/3/1-K56

**KOÖRDINATE LYS/CO-ORDINATE LIST WG 29° KONST./CONST. Y= +/- 0.00 X= +2 800 000.00**

L15	+97 272.953	+75 559.924	DL12	+98 116.162	+74 988.094	DL40	+96 385.321	+75 404.215
L16	+97 224.204	+75 543.166	DL13	+98 234.963	+74 911.394	DL41	+96 406.763	+75 436.529
L23	+96 429.543	+75 629.882	DL14	+98 104.665	+74 953.837	DL42	+96 411.115	+75 454.464
L24	+96 373.559	+75 631.564	DL15	+98 054.711	+74 982.672	DL43	+96 415.454	+75 519.119
L25	+96 320.346	+75 649.152	DL16	+98 021.910	+75 006.281	DL44	+96 411.482	+75 552.426
L26	+95 990.732	+75 665.116	DL17	+97 744.879	+75 192.334	DL45	+96 320.336	+75 639.140
R27	+96 404.036	+75 721.754	DL18	+97 708.241	+75 187.934	DL46	+96 310.831	+75 639.140
R28	+96 343.037	+75 725.130	DL19	+97 698.507	+75 168.928	DL47	+96 306.140	+75 643.830
R30	+96 074.627	+75 723.091	DL20	+97 681.691	+75 177.539	DL48	+95 982.106	+75 659.480
R31	+95 836.667	+75 734.584	DL21	+97 692.430	+75 198.512	DR3	+96 373.708	+75 768.885
R53	+95 235.955	+75 023.896	DL22	+97 675.988	+75 238.628	DR4	+96 359.456	+75 815.008
XR101	+98 153.233	+74 970.727	DL23	+97 433.432	+75 401.203	DR5	+96 344.383	+75 846.021
XR102	+98 164.873	+74 947.191	DL24	+97 404.870	+75 414.746	DR6	+96 340.045	+75 852.212
XR103	+98 232.663	+74 916.482	DL25	+97 385.427	+75 418.448	DR7	+96 326.622	+75 897.751
DL1	+97 296.619	+75 519.012	DL26	+97 365.856	+75 360.233	DR8	+96 275.419	+75 862.758
DL2	+97 333.967	+75 490.045	DL27	+97 345.606	+75 300.096	DR9	+96 312.019	+75 835.532
DL3	+97 366.652	+75 495.337	DL28	+97 326.187	+75 306.635	DR10	+96 333.972	+75 788.974
DL4	+97 393.261	+75 477.476	DL29	+97 332.564	+75 325.591	DR11	+96 339.886	+75 769.909
DL5	+97 397.246	+75 459.026	DL30	+97 339.294	+75 351.661	DR12	+96 126.289	+75 759.272
DL6	+97 433.219	+75 443.372	DL31	+97 342.221	+75 378.426	DR13	+96 117.401	+75 772.123
DL7	+97 698.677	+75 265.255	DL32	+97 342.769	+75 409.628	DR14	+96 110.718	+75 767.491
DL8	+97 728.702	+75 270.515	DL33	+97 322.341	+75 441.467	DR15	+96 034.547	+75 741.043
DL9	+97 755.273	+75 252.682	DL34	+97 284.158	+75 462.505	DR16	+95 894.710	+75 747.799
DL10	+97 761.781	+75 222.901	DL35	+97 257.450	+75 487.874	DR17	+95 864.851	+75 753.836
DL11	+98 083.690	+75 006.853	DL36	+97 236.718	+75 518.323	DR18	+95 837.104	+75 769.197
			DL37	+96 441.020	+75 526.783	DR19	+95 818.672	+75 788.194
			DL38	+96 434.126	+75 426.047	DR20	+95 805.701	+75 779.273
			DL39	+96 395.715	+75 392.346			

Printed by the Government Printer, Bosman Street, Private Bag X85, Pretoria, 0001,  
for the **Gauteng Provincial Administration**, Johannesburg.

Contact Centre Tel: 012-748 6200. eMail: [info.egazette@gpw.gov.za](mailto:info.egazette@gpw.gov.za)  
Publications: Tel: (012) 748 6053, 748 6061, 748 6065