

***THE PROVINCE OF
GAUTENG***

***DIE PROVINSIE VAN
GAUTENG***

**Provincial Gazette
Provinsiale Koerant**
EXTRAORDINARY • BUITENGEWOON

Selling price • Verkoopprijs: **R2.50**
Other countries • Buitelands: **R3.25**

Vol. 26

PRETORIA
13 FEBRUARY 2020
13 FEBRUARIE 2020

No. 38

CONTENTS

Gazette *Page*
No. *No.*

PROCLAMATION • PROKLAMASIE

| | | | |
|----|------------------------------------------------------------------------------------------------------------------------------------------------------------------------------------------------------------|----|---|
| 19 | Gauteng Infrastructure Act (8/2001): Proclamation of access roads in connection with Provincial Roads K54 and P154-1 (K22) over the Farms Donkerhoek 370 JR, Barendshoek 630 JR and Mooiplaats 367 JR..... | 38 | 4 |
| 20 | Gauteng Transport Infrastructure Act (8/2001): Proclamation of K133 intersection with K148 in terms of Gauteng Transport Infrastructure Act..... | 38 | 7 |

PROCLAMATION • PROKLAMASIE

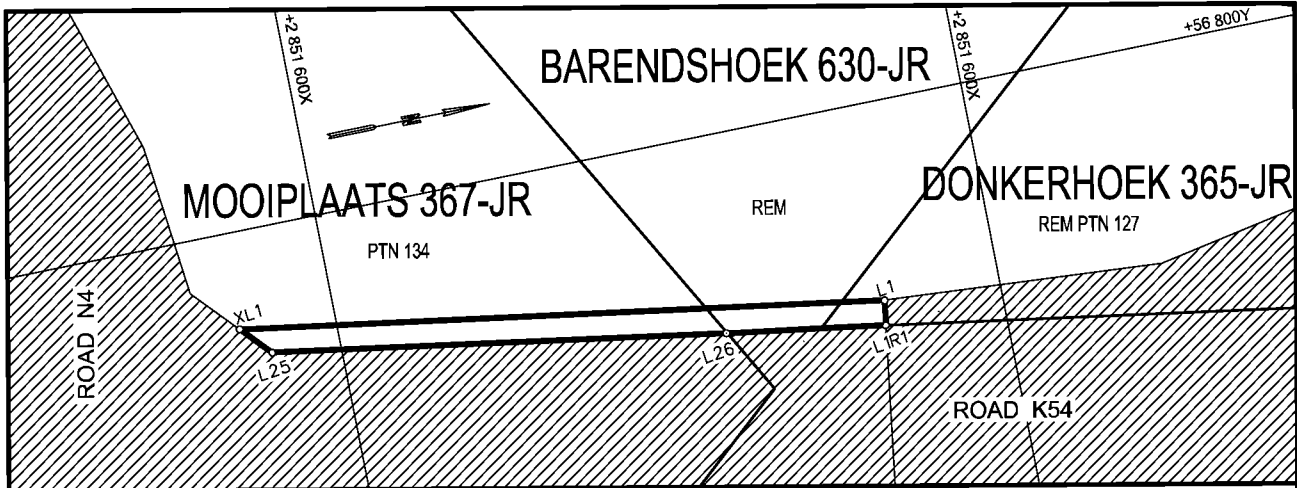
PROCLAMATION 19 OF 2020**PROCLAMATION OF ACCESS ROADS IN CONNECTION WITH PROVINCIAL ROADS K54 AND P154-1 (K22) OVER THE FARMS DONKERHOEK 370 JR, BARENDSHOEK 630 JR AND MOOIPLAATS 367 JR.**

In terms of section 13(1) of the Gauteng Transport Infrastructure Act, 2001 (Act No. 8 of 2001) the MEC proclaims that access roads in connection with Provincial Roads K54 and P154-1 (K22) shall exist over the farms Donkerhoek 370 JR, Barendshoek 630 JR and Mooiplaats 367 JR as indicated on the accompanying sketch plans.

In terms of section 23(6) of the aforementioned act, it is hereby declared that boundary beacons demarcating the said access roads, have been placed and that plans PRS90/144/2V(1) and PRS86/153/10V(1) indicating the land encroached upon by virtue of the proclamation of the access road, is available for inspection by any interested person in the Plan Room of the Department of Roads and Transport, 1215 Nico Smit street, Koedoespoort, Pretoria, during office hours.

Reference: 2/1/1/2/3/1-K54

**MEC Resolution 003
Dated 10/10/2019**



REFERENCE

ROAD PROCLAIMED 

EXISTING ROAD 

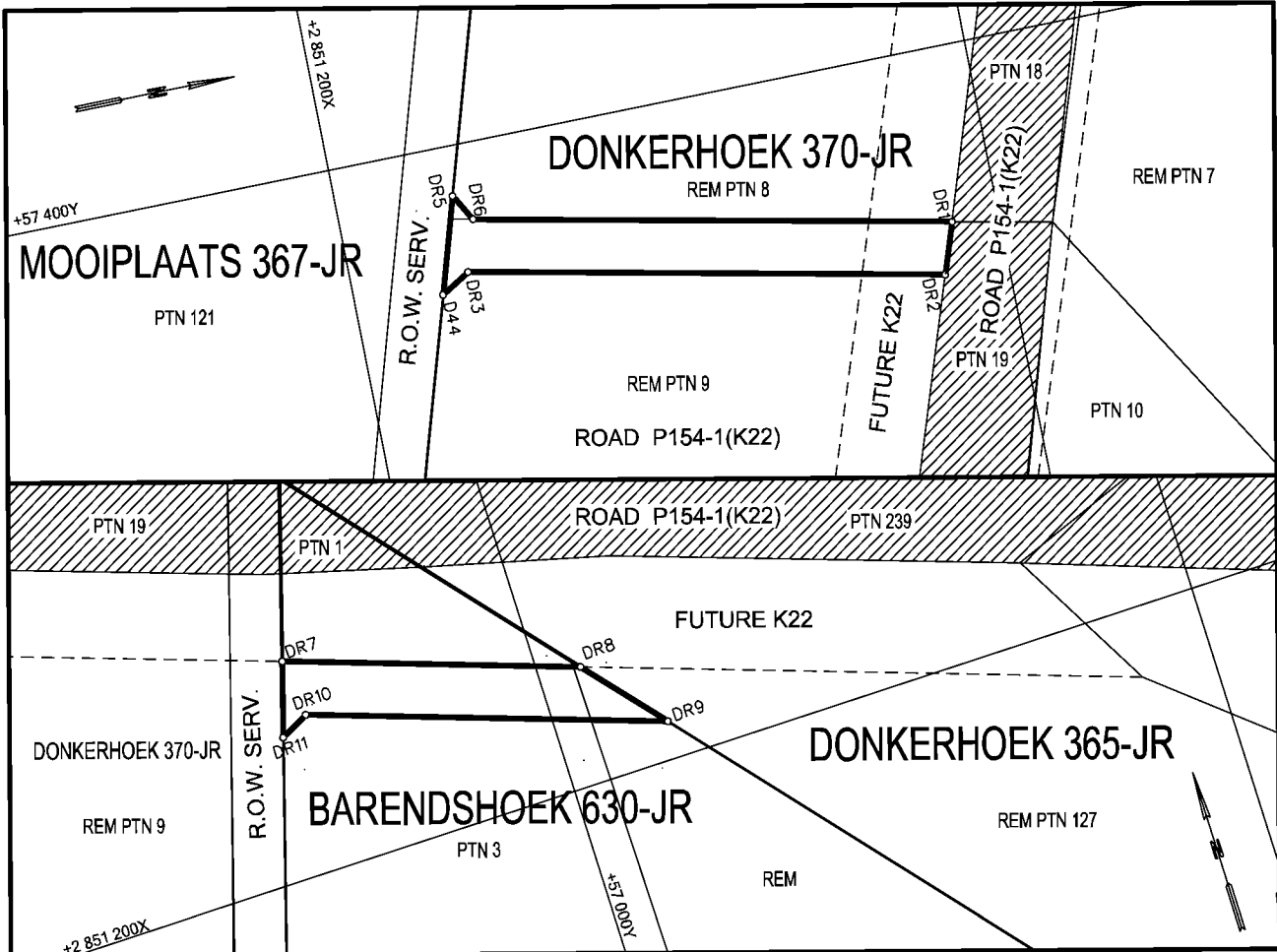
THE FIGURES : XL1, L1, L1R1, L26, L25, XL1.

REPRESENTS THE PROCLAMATION OF PROVINCIAL ROAD K54 OVER PORTION 134 OF THE FARM MOOIPLAATS 367 - JR, REMAINDER OF THE FARM BARENDSHOEK 630 - JR, REMAINDER PORTION 127 OF THE FARM DONKERHOEK 365 - JR AS INTENDED BY PUBLICATION THEREOF IN THE PROVINCIAL GAZETTE AND SHOWN IN DETAIL ON PLANS PRS 86/153/10V(1)

FILE NO. 12/1/8/1-K54

CO-ORDINATE LIST WG 29° CONST. Y= +/- 0.00 X= +2 800 000.00

| | | | | | | | | |
|------|-------------|-------------|-----|-------------|-------------|-----|-------------|-------------|
| L1 | +56 741.156 | +51 435.382 | L25 | +56 762.470 | +51 620.790 | XL1 | +56 771.233 | +51 629.111 |
| L1R1 | +56 733.772 | +51 436.430 | L26 | +56 741.020 | +51 484.378 | | | |



REFERENCE

ROAD PROCLAIMED  EXISTING ROAD 

THE FIGURES : (1) DR1-DR6, DR1.
(2) DR7-DR11, DR7.

REPRESENTS THE PROCLAMATION OF ACCESS ROADS TO PROVINCIAL ROAD K22 OVER REMAINDER OF PORTIONS 8 & 9 OF THE FARM DONKERHOEK 370 - JR & PORTION 3 & REMAINDER OF THE FARM BARENDSHOEK 630 - JR AS INTENDED BY PUBLICATION THEREOF IN THE PROVINCIAL GAZETTE AND SHOWN IN DETAIL ON PLANS PRS 90/144/2V(1)

FILE NO. 12/1/8/1-K22

CO-ORDINATE LIST WG 29° CONST. Y= +/- 0.00 X= +2 800 000.00

| | | | | | | | | |
|-----|-------------|-------------|-----|-------------|-------------|------|-------------|-------------|
| DR1 | +57 346.949 | +51 014.501 | DR5 | +57 384.917 | +51 164.064 | DR9 | +56 966.144 | +51 188.660 |
| DR2 | +57 331.684 | +51 019.701 | DR6 | +57 376.808 | +51 159.253 | DR10 | +57 071.888 | +51 152.453 |
| DR3 | +57 361.437 | +51 163.934 | DR7 | +57 073.836 | +51 134.874 | DR11 | +57 080.555 | +51 156.881 |
| DR4 | +57 356.155 | +51 172.829 | DR8 | +56 986.707 | +51 164.707 | | | |

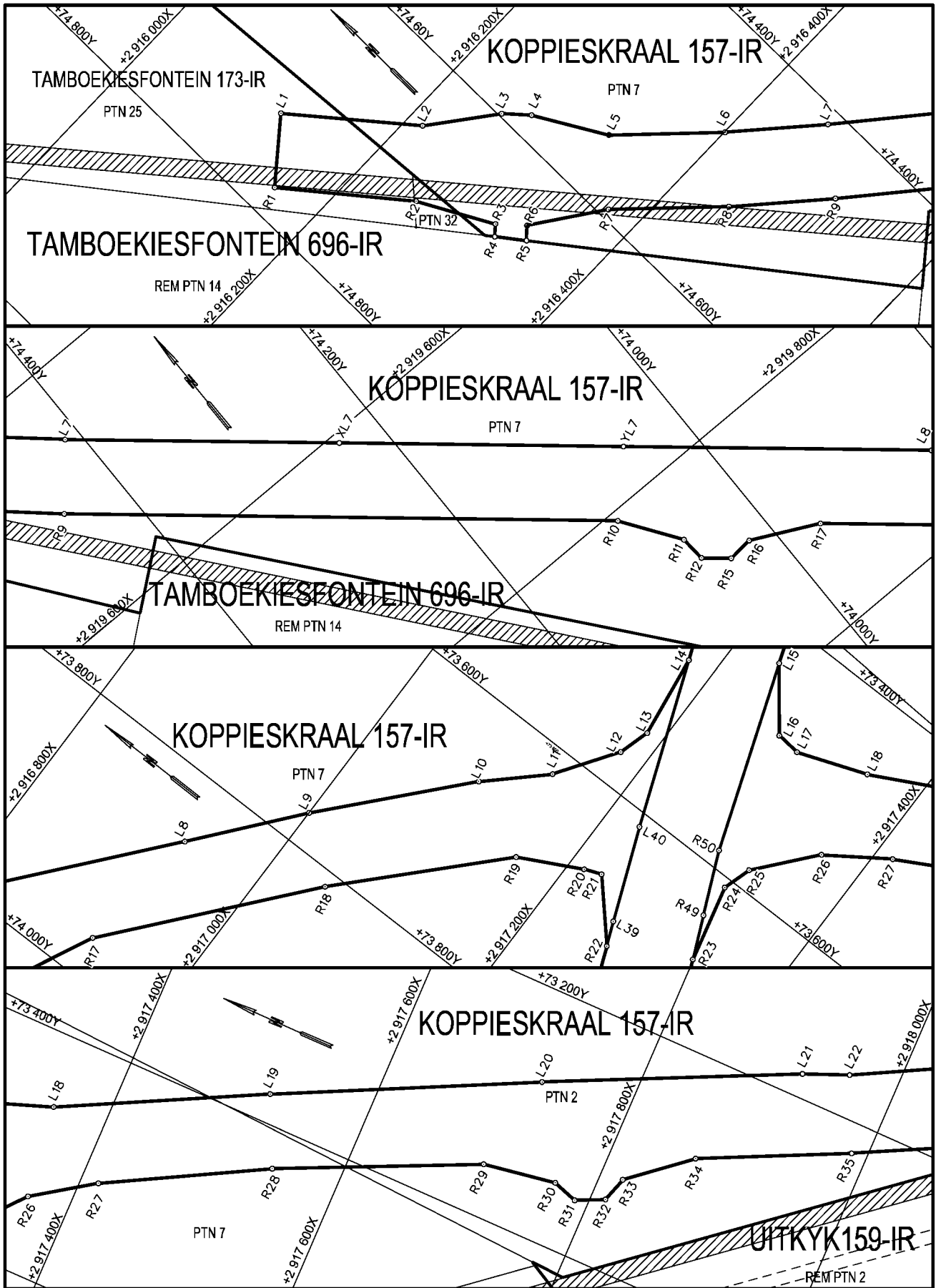
PROCLAMATION 20 OF 2020**PROCLAMATION OF K133 INTERSECTION WITH K148 IN TERMS OF
GAUTENG TRANSPORT INFRASTRUCTURE ACT. 2001, ACT 8 OF 2001
("THE ACT")**

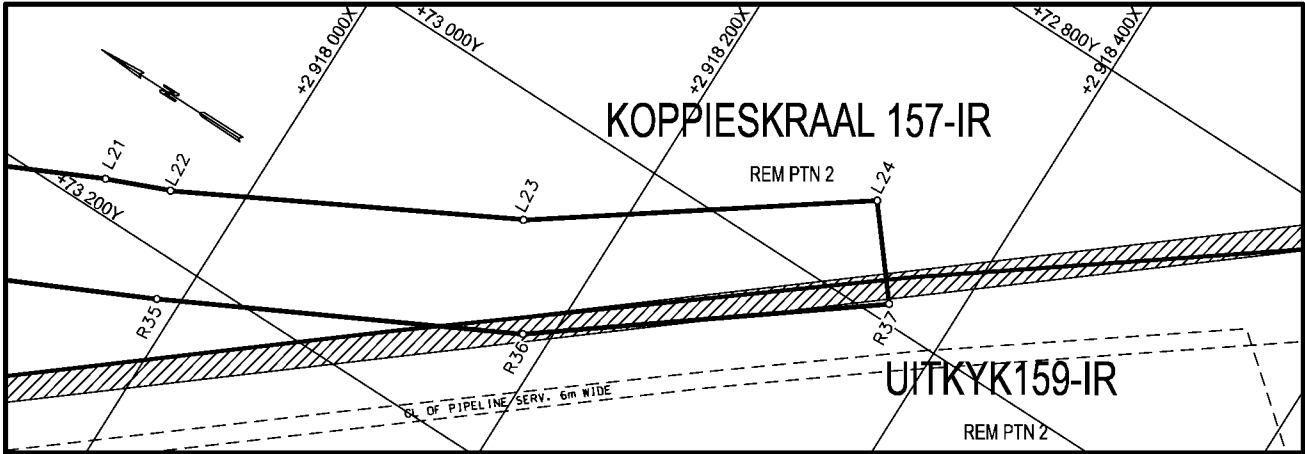
In terms of section 11(1)(b) of the Gauteng Transport Infrastructure Act, 2001 (Act No. 8 of 2001), the MEC responsible for provincial roads, hereby proclaims that provincial road K133 intersection with K148, exists on the land as described and indicated by the figures on the accompanying sketch plan.

In terms of section 23(6) of the aforementioned act it is hereby stated that plan PRS93/47/1V – 3V which indicate the land affected by the provincial road in detail, is available for inspection at the Plan room of the Department Roads and Transport, 1215 Nico Smit street, Koedoespoort, Pretoria, during office hours.

Reference: 2/1/1/2/3/1-K133

**MEC Resolution: 001
Dated 31/01/2020**





REFERENCE

ROAD PROCLAIMED 

EXISTING ROAD 

THE FIGURES : (1) L1-L7, XL7, YL7, L8-L14, L40, L39, R22-R15, R12-R1, L1.
 (2) L15-L24, R37-R23, R49, R50, L15.

REPRESENTS THE PROCLAMATION OF THE PORTION CONCERNED OF PROVINCIAL ROAD K133 OVER PORTIONS 25 & 32 OF THE FARM TAMBOEKIESFONTEIN 173- IR, PORTIONS 2 & 7 OF THE FARM KOPPIESKRAAL 157-IR & REMAINDER OF THE FARM UITKYK 159-IR AS INTENDED BY PUBLICATION THEREOF IN THE PROVINCIAL GAZETTE AND SHOWN IN DETAIL ON PLANS PRS 93/47/IV - 3V

FILE NO. 1/1/12/3/1-K133

KOÖRDINATE LYS/CO-ORDINATE LIST WG 29° KONST./CONST. Y= +/- 0.00 X= +2 800 000.00

| | | | | | | | | |
|-----|-------------|-------------|-----|-------------|-------------|-----|-------------|-------------|
| L1 | +74 726.773 | +19 120.039 | L24 | +72 941.485 | +21 322.363 | R18 | +73 812.412 | +20 048.268 |
| L2 | +74 651.206 | +19 213.257 | L39 | +73 687.316 | +20 259.017 | R19 | +73 694.765 | +20 161.107 |
| L3 | +74 597.618 | +19 254.253 | L40 | +73 611.460 | +20 228.653 | R20 | +73 667.893 | +20 212.988 |
| L4 | +74 580.934 | +19 273.319 | XL7 | +74 236.040 | +19 608.224 | R21 | +73 662.185 | +20 227.229 |
| L5 | +74 547.527 | +19 331.693 | YL7 | +74 052.900 | +19 763.336 | R22 | +73 707.035 | +20 267.178 |
| L6 | +74 477.650 | +19 400.782 | R1 | +74 774.935 | +19 159.081 | R23 | +73 671.659 | +20 331.546 |
| L7 | +74 412.615 | +19 458.672 | R2 | +74 700.145 | +19 252.929 | R24 | +73 607.736 | +20 316.512 |
| L8 | +73 854.498 | +19 931.373 | R3 | +74 667.290 | +19 314.335 | R25 | +73 583.724 | +20 324.012 |
| L9 | +73 771.687 | +20 000.200 | R4 | +74 675.334 | +19 321.272 | R26 | +73 536.435 | +20 364.643 |
| L10 | +73 663.965 | +20 097.890 | R5 | +74 659.073 | +19 342.696 | R27 | +73 502.657 | +20 414.725 |
| L11 | +73 621.144 | +20 143.616 | R6 | +74 649.731 | +19 334.401 | R28 | +73 432.552 | +20 544.180 |
| L12 | +73 571.480 | +20 178.103 | R7 | +74 592.326 | +19 374.553 | R29 | +73 357.523 | +20 706.215 |
| L13 | +73 545.406 | +20 186.244 | R8 | +74 520.000 | +19 446.064 | R30 | +73 347.394 | +20 767.748 |
| L14 | +73 475.985 | +20 177.352 | R9 | +74 452.686 | +19 505.983 | R31 | +73 354.166 | +20 788.608 |
| L15 | +73 431.644 | +20 239.441 | R10 | +74 096.023 | +19 808.062 | R32 | +73 343.109 | +20 812.140 |
| L16 | +73 479.271 | +20 276.025 | R11 | +74 062.984 | +19 855.701 | R33 | +73 322.249 | +20 818.912 |
| L17 | +73 481.148 | +20 296.218 | R12 | +74 061.233 | +19 876.841 | R34 | +73 281.402 | +20 868.222 |
| L18 | +73 459.685 | +20 354.684 | R15 | +74 042.156 | +19 892.999 | R35 | +73 224.465 | +20 987.048 |
| L19 | +73 376.442 | +20 517.806 | R16 | +74 021.015 | +19 891.247 | R36 | +73 123.475 | +21 184.525 |
| L20 | +73 275.195 | +20 723.881 | R17 | +73 965.535 | +19 918.579 | R37 | +72 989.649 | +21 361.405 |
| L21 | +73 180.733 | +20 922.571 | R49 | +73 636.953 | +20 316.221 | R50 | +73 586.105 | +20 293.899 |
| L22 | +73 165.636 | +20 959.406 | | | | | | |
| L23 | +73 065.869 | +21 148.392 | | | | | | |