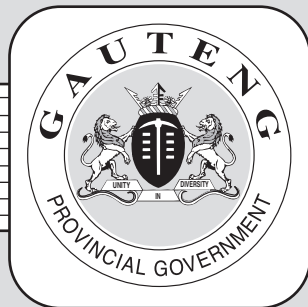


**THE PROVINCE OF
GAUTENG**



**DIE PROVINSIE VAN
GAUTENG**

Provincial Gazette Provinsiale Koerant

EXTRAORDINARY • BUITENGEWOON

Selling price • Verkoopprijs: **R2.50**
Other countries • Buitelands: **R3.25**

Vol: 27

PRETORIA
17 NOVEMBER 2021
17 NOVEMBER 2021

No: 408

We all have the power to prevent AIDS



**AIDS
HELPLINE**

0800 012 322

DEPARTMENT OF HEALTH

Prevention is the cure

N.B. The Government Printing Works will not be held responsible for the quality of "Hard Copies" or "Electronic Files" submitted for publication purposes

ISSN 1682-4520



9 771682 452005



0 0 4 0 8

IMPORTANT NOTICE:

THE GOVERNMENT PRINTING WORKS WILL NOT BE HELD RESPONSIBLE FOR ANY ERRORS THAT MIGHT OCCUR DUE TO THE SUBMISSION OF INCOMPLETE / INCORRECT / ILLEGIBLE COPY.

No FUTURE QUERIES WILL BE HANDLED IN CONNECTION WITH THE ABOVE.

Contents

<i>No.</i>	GENERAL NOTICES • ALGEMENE KENNISGEWINGS	<i>Gazette No.</i>	<i>Page No.</i>
1418	Gauteng Transport Infrastructure Act, 2001 (Act No 8 of 2001): Revoking a portion of Notice 1379 date 21 November 1979, by closing an access roads in connection with Provincial Roads P73-1 (K45): District Westonia Westonia	408	3

GENERAL NOTICES • ALGEMENE KENNISGEWINGS**GENERAL NOTICE 1418 OF 2021****REVOKING A PORTION OF NOTICE 1379 DATE 21 NOVEMBER 1979, BY CLOSING AN ACCESS ROADS IN CONNECTION WITH PROVINCIAL ROADS P73-1 (K45): DISTRICT WESTONARIA**

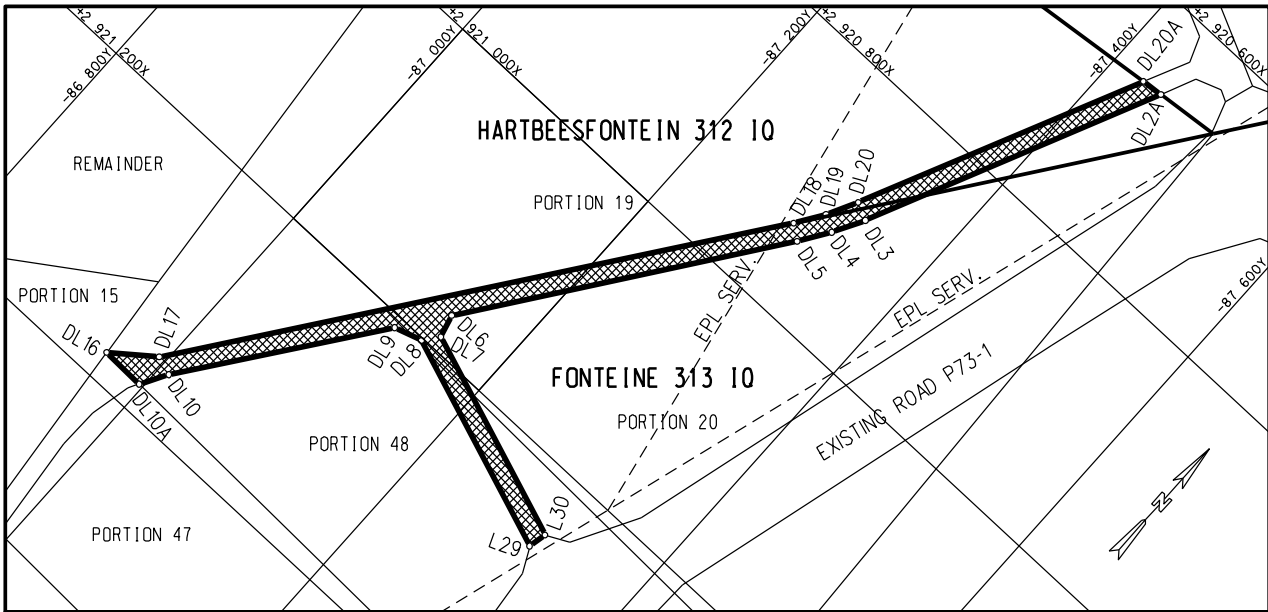
In terms of section 38(5) and section 16(1)(C) of the Gauteng Transport Infrastructure Act, 2001 (Act No 8 of 2001) the MEC hereby proclaim the closure of access roads in respect of Provincial Road P73-1 (K45) over portions 20 and 48 of the farm Fonteine 313 IQ and portion 19 of the farm Hertebeesfontein 312 IQ as described and indicated by the figure on the accompanying sketch.

Boundary beacons, demarcating the aforementioned closure of the road, have been placed on the land concerned and a plan, PRS75/100/12V, indicating the closure of the road in detail is available for inspection by any interested person during office hours at the office of the Department of Roads and Transport, 1215 Nico Smit Street, Koedoespoort, Pretoria or by email petro.janjetich@gauteng.gov.za.

MEC Resolution 006

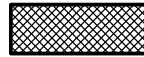
Dated 1 October 2019

Reference: 2/1/1/2/3/1 –P73-1 (K45)



REFERENCE

ACCESS ROAD CLOSED



THE FIGURE : DL2A, DL3-DL7, L30, L29, DL8-DL10, DL10A, DL16-DL20, DL20A, DL2A.

REPRESENTS THE CLOSURE OF THE ACCESS ROAD TO ROAD P73-1 OVER PORTIONS 20 AND 48 OF THE FARM FONTEINE 313-1Q AND PORTION 19 OF THE FARM HARTBEEFONTEIN 312-1Q AS INTENDED BY THE PUBLICATION THEREOF IN THE PROVINCIAL GAZETTE AND SHOWN IN DETAIL ON PLAN PRS 75/100/12V

FILE NO. (2/1/3)2/1/1/2/3/P162-1(1)

CO-ORDINATE LIST CAPE Lo 27° CONSTAND Y = +/- 0.00 X= +2 900 000.00

L29	-87 310.93	+21 263.30	DL6	-87 143.21	+21 172.86	DL16	-86 959.51	+21 379.01
L30	-87 314.67	+21 248.72	DL7	-87 148.24	+21 190.27	DL17	-86 993.46	+21 353.13
DL2A	-87 451.39	+20 658.02	DL8	-87 138.83	+21 202.86	DL18	-87 299.30	+20 932.81
DL3	-87 340.80	+20 892.09	DL9	-87 116.68	+21 209.33	DL19	-87 314.47	+20 909.73
DL4	-87 327.38	+20 917.38	DL10	-87 008.28	+21 358.33	DL20	-87 327.24	+20 885.68
DL5	-87 311.43	+20 941.63	DL10A	-86 996.27	+21 379.86	DL20A	-87 433.83	+20 660.07

1/1 V1.0

Printed by the Government Printer, Bosman Street, Private Bag X85, Pretoria, 0001,
for the **Gauteng Provincial Administration**, Johannesburg.

Contact Centre Tel: 012-748 6200. eMail: info.egazette@gpw.gov.za
Publications: Tel: (012) 748 6053, 748 6061, 748 6065

This gazette is also available free online at www.gpwonline.co.za