

LIMPOPO PROVINCE  
LIMPOPO PROVINSIE  
XIFUNDZANKULU XA LIMPOPO  
PROFENSE YA LIMPOPO  
VUNDU LA LIMPOPO  
IPHROVINSI YELIMPOPO

**Provincial Gazette • Provinsiale Koerant • Gazete ya Xifundzankulu  
Kuranta ya Profense • Gazethe ya Vundu**

*(Registered as a newspaper) • (As 'n nuusblad geregistreer)  
(Yi rhijistarwile tanihi Nyuziphapha)  
(E ngwadisitšwe bjalo ka Kuranta)*

**POLOKWANE,**

7 NOVEMBER 2008  
7 NOVEMBER 2008  
7 HUKURI 2008  
7 NOFEMERE 2008  
7 LARA 2008

**Vol. 15**

**Extraordinary**

**Ku katsa na Tigazete to  
Hlawuleka hinkwato**

**No. 1563**

**Buitengewoon**

**Hu tshi katelwa na  
Gazethe dza Nyingo**

---

**CONTENTS • INHOUD**

<i>No.</i>		<i>Page No.</i>	<i>Gazette No.</i>
<b>PROVINCIAL NOTICES</b>			
10	Northern Province Roads Agency (Pty) Limited and Provincial Roads Act (7/1998): Closure and deviation of portion of an unnumbered public road over portion of farm Bushmanskraal 33 KQ.....	3	1563
11	do.: Closure and deviation of an access road over the farm Rhyностerfontein 583 LR.....	5	1563

---

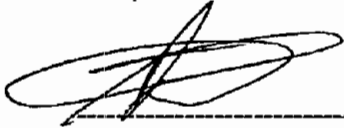
---

**PROVINCIAL NOTICES**

---

**No. 10****7 November 2008****NOTICE FOR THE CLOSURE AND DEVIATION OF A PORTION OF  
AN UNNUMBERED PUBLIC ROAD OVER PORTION OF THE FARM  
BUSHMANSKRAAL 33 KQ**

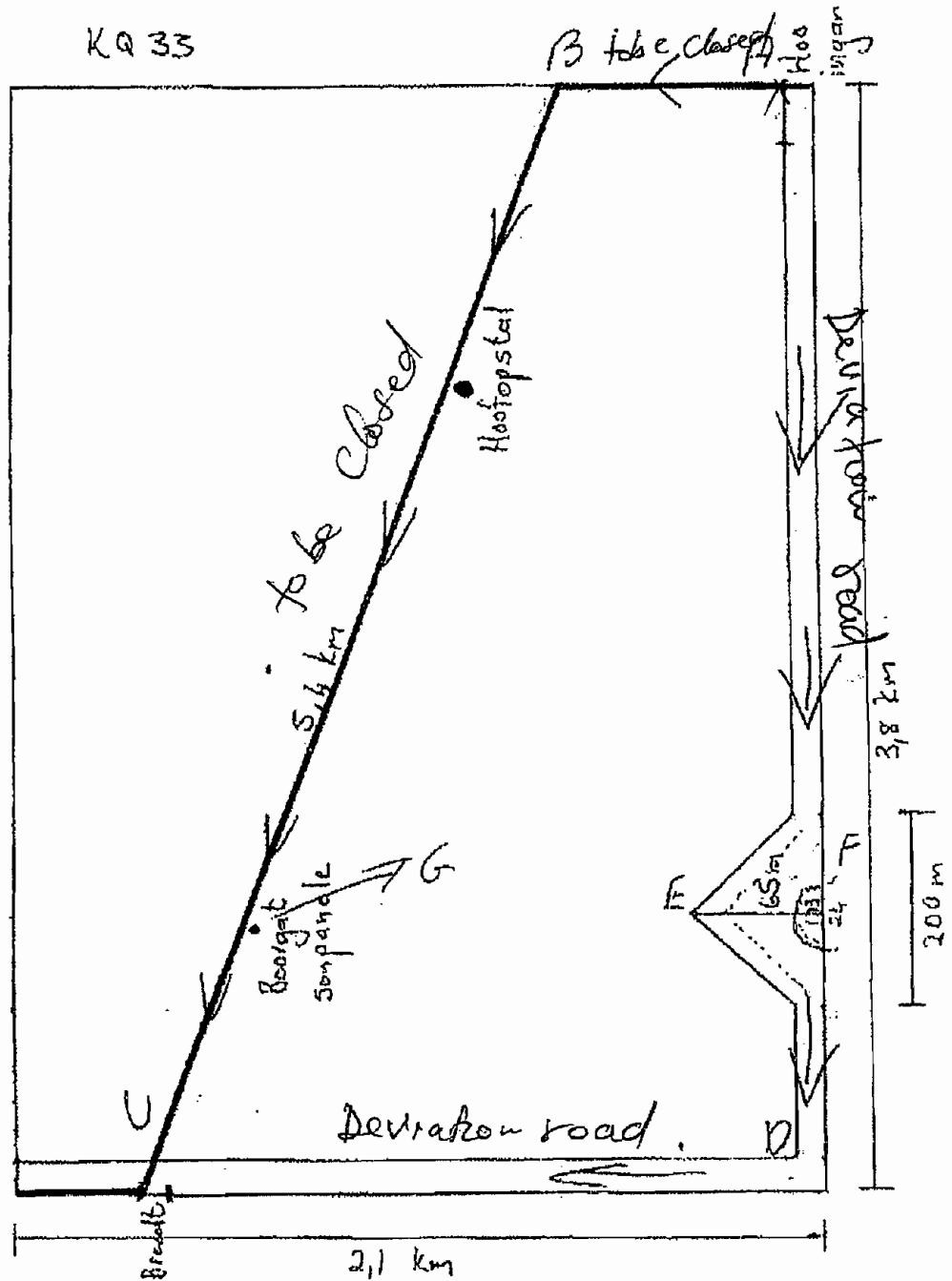
*I, Justice Pitso, Member of the Executive Council for Roads and Transport Limpopo Province, hereby give notice in terms of Section 44 Sub-section (1) and (2) of the Northern Province Roads Agency (Pty) Limited and Provincial Roads Act, 1998 Act No 7 of 1998, declare a portion of an unnumbered public road over a portion of the farm Bushmanskraal 33 KQ as closed and deviated thereof to the boundary of a portion the farm in Thabazimbi area in the Waterberg district.*



-----  
**J. Pitso**  
**MEC for Roads and Transport**

**10/10/08**

-----  
**Date**



Gedeelte van waterpan in bushmanskraal gedeelte 24m x 13 m  
 Naaste gedeelte van nuwe pad ± 48m vanaf pan  
 Heining is 17m vanaf grensdraad om nuwe pad af te span.  
 Nuwe pad is 4m wyd gestraap  
 Grond wat verloor word binne gang ± 10 ha  
 Ekstra heining van ongeveer 5,9 km

No. 11

7 November 2008

**NOTICE FOR THE CLOSURE AND DEVIATION OF AN ACCESS ROAD OVER THE FARM RHYNOSTERFONTEIN 583 LR**

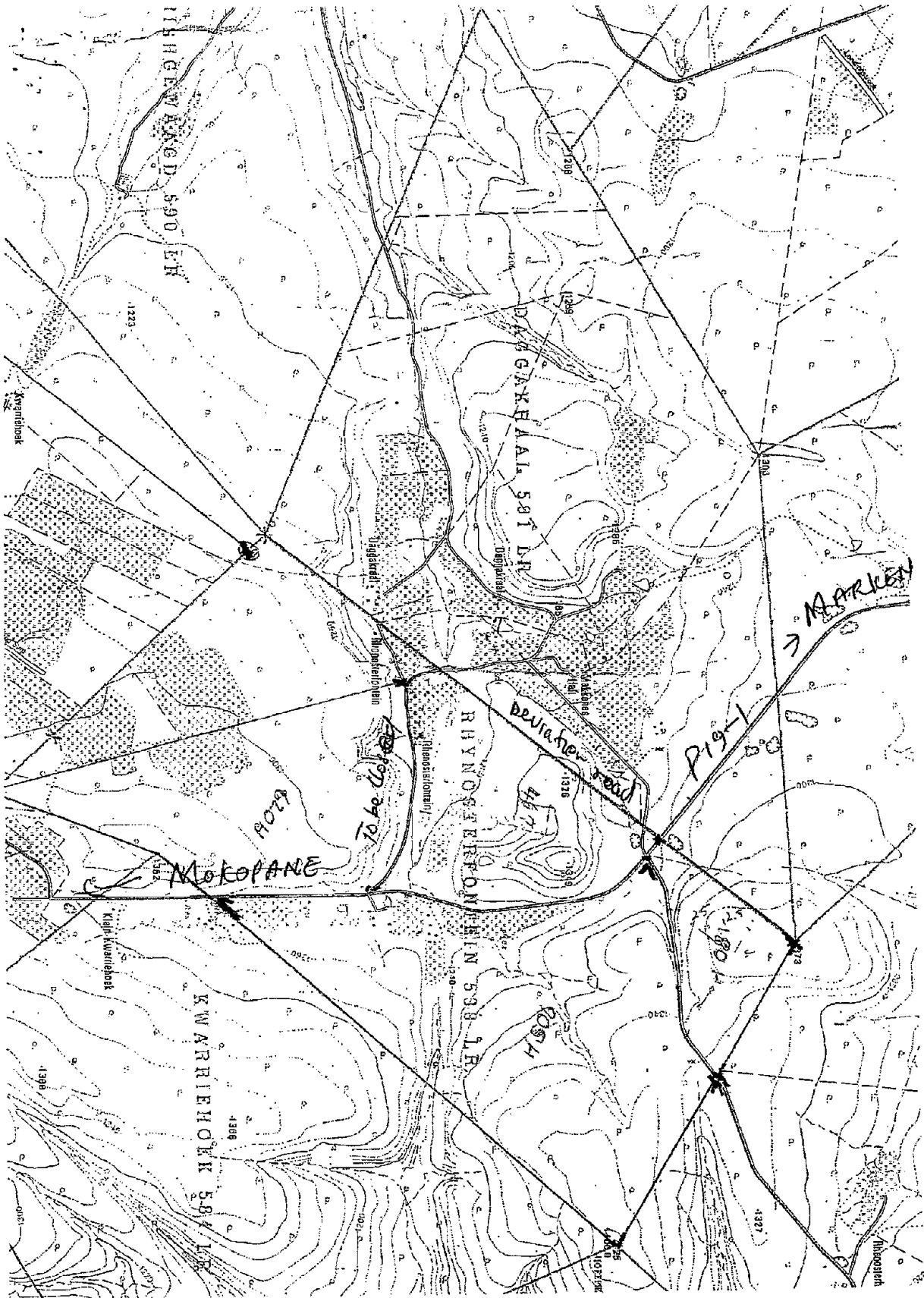
*I Justice Pitso, Member of the Executive Council for Roads and Transport Limpopo Province, hereby give notice in terms of Section 44 Sub-section (1) and (2) of the Northern Province Roads Agency (Pty) Limited and Provincial Roads Act, 1998 Act No 7 of 1998, declare an access road over the farm Rhynosterfontein 583 LR at km 66,908 as closed and be deviated to km 71,846 on road P19-1 in the Waterberg district.*



**J. Pitso**  
**MEC for Roads and Transport**

10/10/08

**Date**



1 : 50 000