

LIMPOPO PROVINCE  
LIMPOPO PROVINSIE  
XIFUNDZANKULU XA LIMPOPO  
PROFENSE YA LIMPOPO  
VUNDU LA LIMPOPO  
IPHROVINSI YELIMPOPO

**Provincial Gazette • Provinsiale Koerant • Gazete ya Xifundzankulu  
Kuranta ya Profense • Gazethe ya Vundu**

*(Registered as a newspaper) • (As 'n nuusblad geregistreer)*  
*(Yi rhijistariwile tanihi Nyuziphepha)*  
*(E ngwadisitšwe bjalo ka Kuranta)*  
*(Yo redzhistariwa sa Nyusiphepha)*

**POLOKWANE,**

23 JULY 2010  
23 JULIE 2010  
23 MAWUWANI 2010  
23 JULAE 2010  
23 FULWANA 2010

**Vol. 17**  
**Extraordinary**

**Ku katsa na Tigazete to  
Hlawuleka hinkwato**

**No. 1818**  
**Buitengewoon**  
**Hu tshi katelwa na  
Gazethe dza Nyingo**

**IMPORTANT NOTICE**

The Government Printing Works will not be held responsible for faxed documents not received due to errors on the fax machine or faxes received which are unclear or incomplete. Please be advised that an "OK" slip, received from a fax machine, will not be accepted as proof that documents were received by the GPW for printing. If documents are faxed to the GPW it will be the sender's responsibility to phone and confirm that the documents were received in good order.

Furthermore the Government Printing Works will also not be held responsible for cancellations and amendments which have not been done on original documents received from clients.

**CONTENTS • INHOUD**

<i>No.</i>	<i>Page No.</i>	<i>Gazette No.</i>
<b>GENERAL NOTICE</b>		
225 Northern Province Roads Agency (Pty) Limited and Provincial Roads Act (7/1998): Notice for the declaration of sections of Roads D1675 (Steenbokspan Road) and D2001 as provincial roads in Lephalale Area in the Waterberg District .....	3	1818

---

**GENERAL NOTICE**

---

**NOTICE 225 OF 2010****NOTICE FOR THE DECLARATION OF SECTIONS OF ROADS D1675  
(STEENBOKPAN ROAD) AND D2001 AS PROVINCIAL ROADS IN LEPHALALE  
AREA IN THE WATERBERG DISTRICT**

I Pinky Kekana, Member of the Executive Council for Roads and Transport Limpopo Province, hereby give notice in terms of Section 40 Sub-section (1) and (2) of the Northern Province Roads Agency (Pty) Limited and Provincial Roads Act, 1998 (Act no 7 of 1998), that the deviated sections of roads D1675 from KM 15,763 to KM 25,000 and D2001 from KM 25,144 to the junction with road D1675 be declared as provincial roads as shown on the attached diagrams.



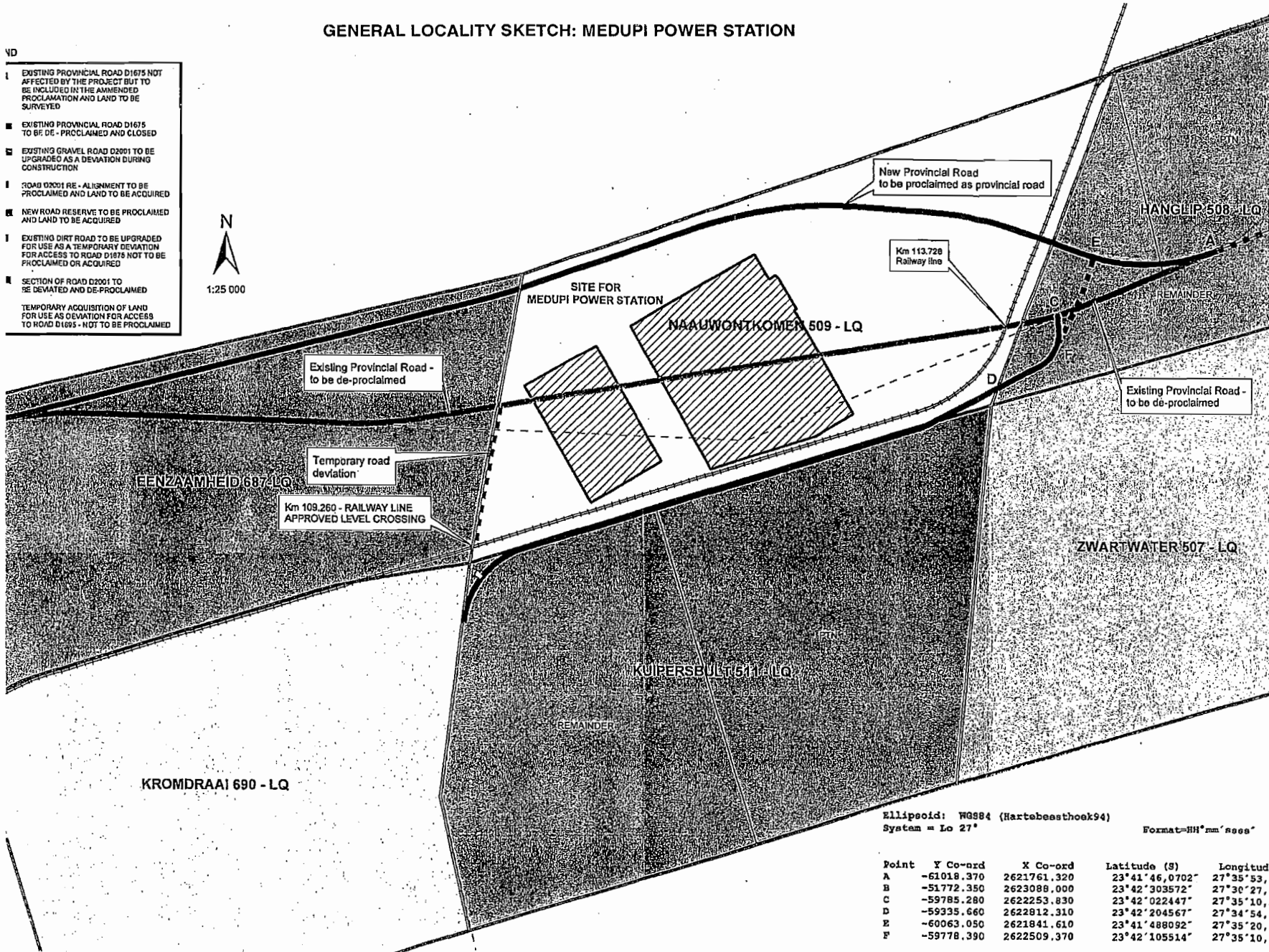
-----  
**P. Kekana**  
**MEC for Roads and Transport**

29/06/2010

-----  
**Date**

GENERAL LOCALITY SKETCH: MEDUPI POWER STATION

- ND
- 1 EXISTING PROVINCIAL ROAD D1675 NOT AFFECTED BY THE PROJECT BUT TO BE INCLUDED IN THE AMENDED PROCLAMATION AND LAND TO BE SURVEYED
  - EXISTING PROVINCIAL ROAD D1675 TO BE DE-PROCLAIMED AND CLOSED
  - EXISTING GRAVEL ROAD D2001 TO BE UPGRADED AS A DEVIATION DURING CONSTRUCTION
  - 1 ROAD D2001 RE-ALIGNMENT TO BE PROCLAIMED AND LAND TO BE ACQUIRED
  - NEW ROAD RESERVE TO BE PROCLAIMED AND LAND TO BE ACQUIRED
  - 1 EXISTING DIRT ROAD TO BE UPGRADED FOR USE AS A TEMPORARY DEVIATION FOR ACCESS TO ROAD D1675 NOT TO BE PROCLAIMED OR ACQUIRED
  - SECTION OF ROAD D2001 TO BE DEVIATED AND DE-PROCLAIMED
- TEMPORARY ACQUISITION OF LAND FOR USE AS DEVIATION FOR ACCESS TO ROAD D1675 - NOT TO BE PROCLAIMED



Ellipsoid: WGS84 (Hartebeesthoek94)  
 System = Lo 27°  
 Format=HH°mm'secs"

Point	Y Co-ord	X Co-ord	Latitude (S)	Longitude
A	-61018.370	2621761.320	23°41'46.0702"	27°35'53.10"
B	-51772.350	2623088.000	23°42'303572"	27°30'27.10"
C	-59785.280	2622253.830	23°42'022447"	27°35'10.10"
D	-59335.660	2622812.310	23°42'204567"	27°34'54.10"
E	-60063.050	2621841.610	23°41'488092"	27°35'20.10"
F	-59778.390	2622509.370	23°42'105514"	27°35'10.10"

## REFERENCE / VERWYSING

ROAD DEVIATION



PAD VERLÊ

ROAD CLOSED



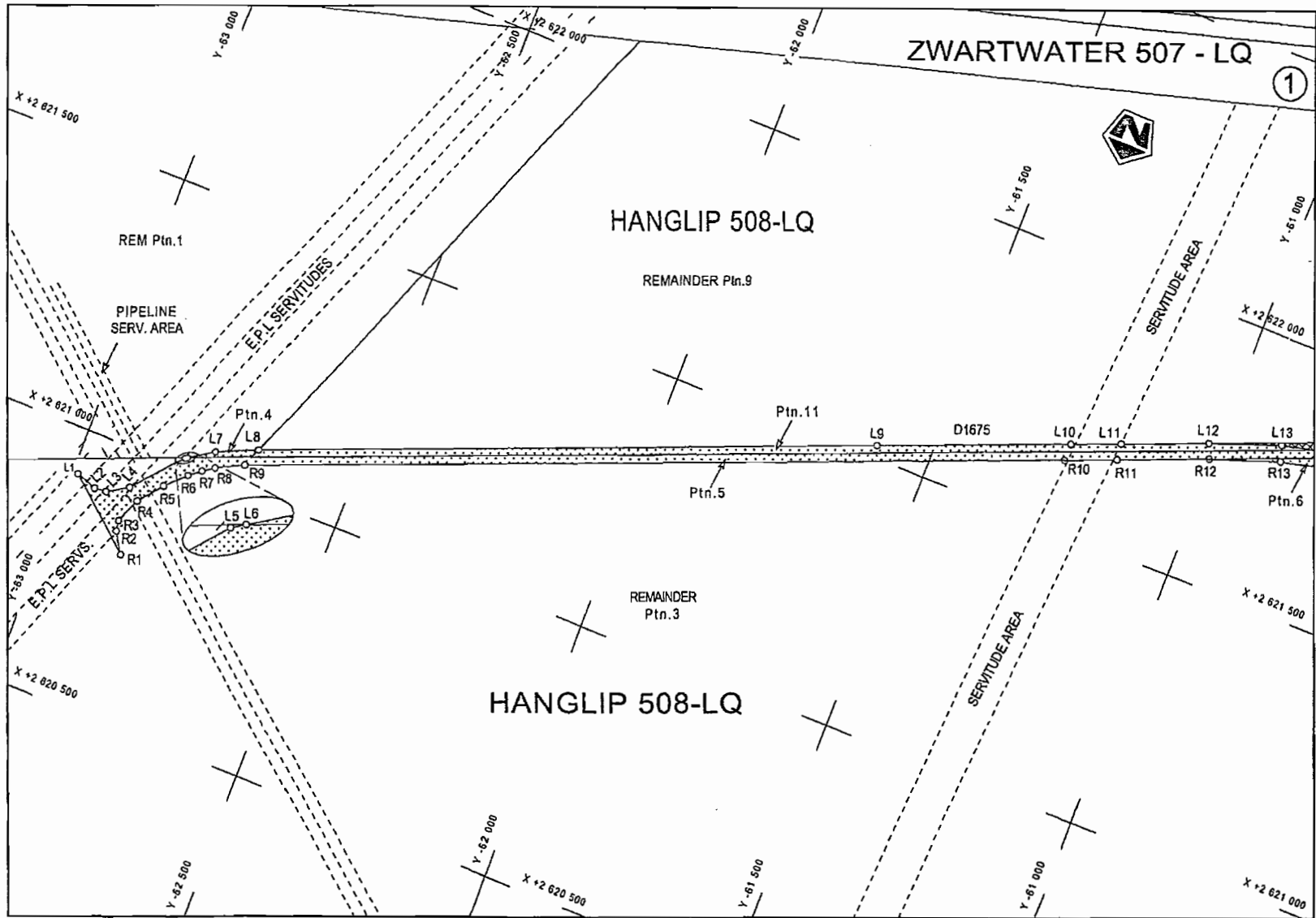
PAD GESLUIT

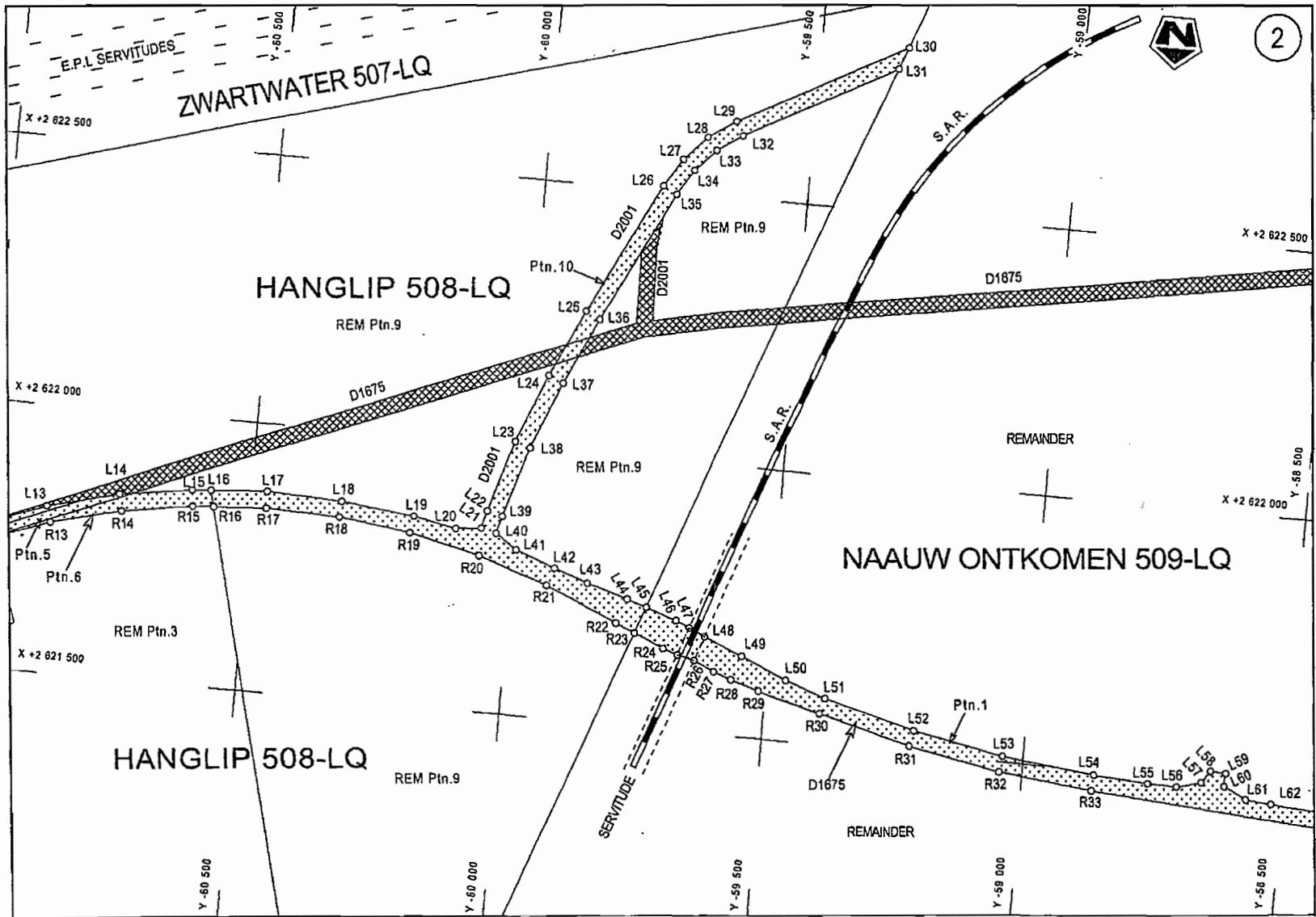
THE FIGURE: L1 - L21, L40 - L84 AND R1 TO R54 REPRESENTS THE PROCLAMATION OF THE DEVIATION OF PORTION CONCERNED OF PROVINCIAL DISTRICT ROAD D1675 OVER PORTIONS 4, 5, 6, 10 & 11 OF THE FARM HANGLIP 508 - LQ, PORTION 1 OF THE FARM NAAUW ONTKOMEN 509 - LQ AND PORTION 1 OF THE FARM EENZAAMHEID 687 - LQ AS INTENDED BY PUBLICATION THEREOF IN THE PROVINCIAL GAZETTE AND SHOWN IN DETAIL ON THE SUBJOINED PLANS.

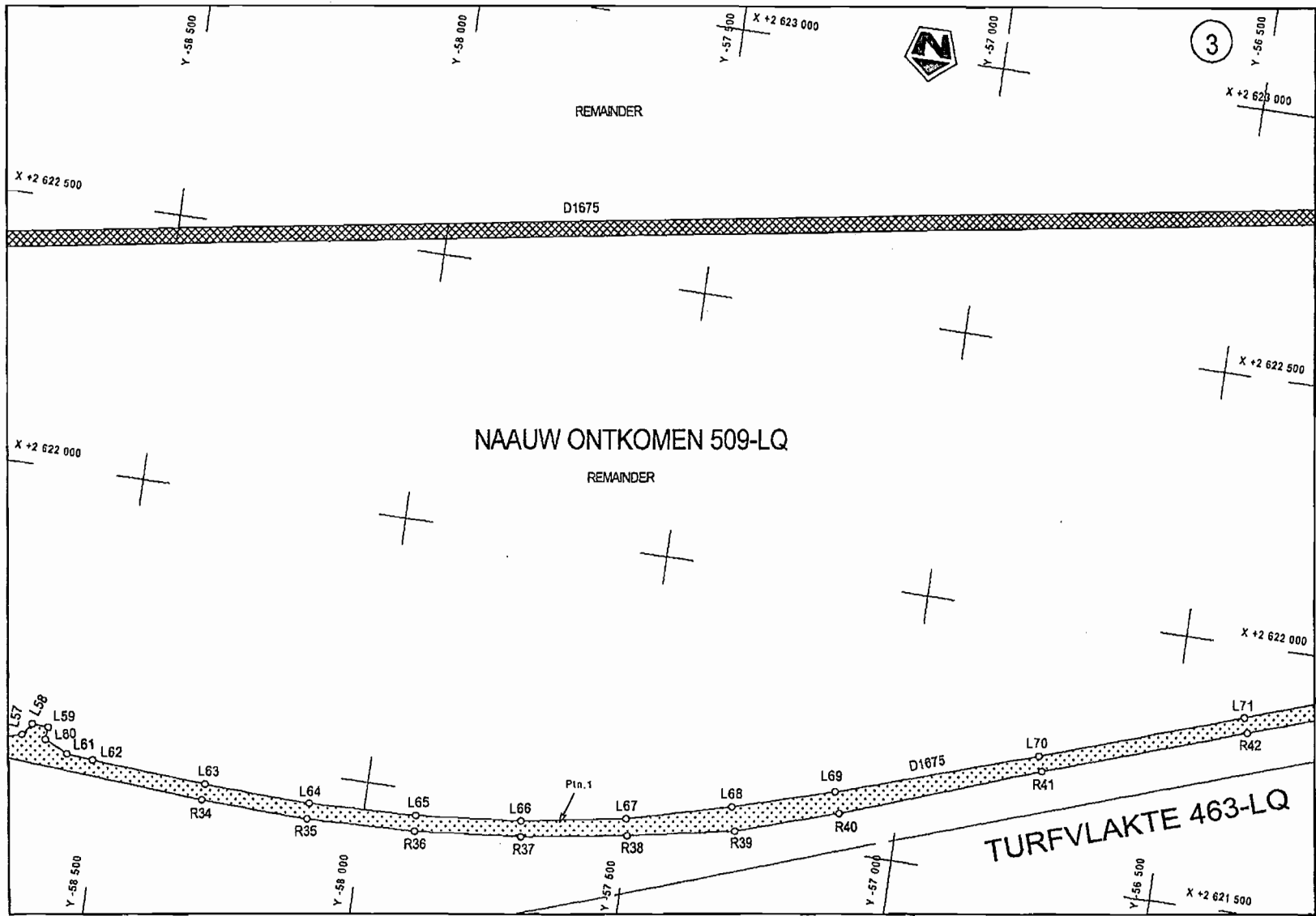
DIE FIGUUR: L1 - L21, L40 - L84 EN R1 TOT R54 VERTEENWOORDIG DIE PROKLAMASIE VAN DIE VERLEGGING VAN DIE BETROKKE GEDEELTE VAN PROVINSIALE DISTRIKSPAD D1675 OOR GEDEELTES 4, 5, 6, 10 & 11 VAN DIE PLAAS HANGLIP 508 - LQ, GEDEELTE 1 VAN DIE PLAAS NAAUW ONTKOMEN 509 - LQ EN GEDEELTE 1 VAN DIE PLAAS EENZAAMHEID 687 - LQ SOOS BEDOEL DEUR DIE PUBLIKASIE DAARVAN IN DIE PROVINSIALE KOERANT EN GETOON IN DETAIL OP DIE AANGEHEGTE PLANNE.

THE FIGURE: L21 TO L40 REPRESENTS THE PROCLAMATION OF THE DEVIATION OF THE APPLICABLE PORTION OF PROVINCIAL DISTRICT ROAD D2001 OVER THE PORTION 10 OF THE FARM HANGLIP 508 - LQ AS INTENDED BY PUBLICATION THEREOF IN THE PROVINCIAL GAZETTE AND SHOWN IN DETAIL ON THE SUBJOINED PLANS.

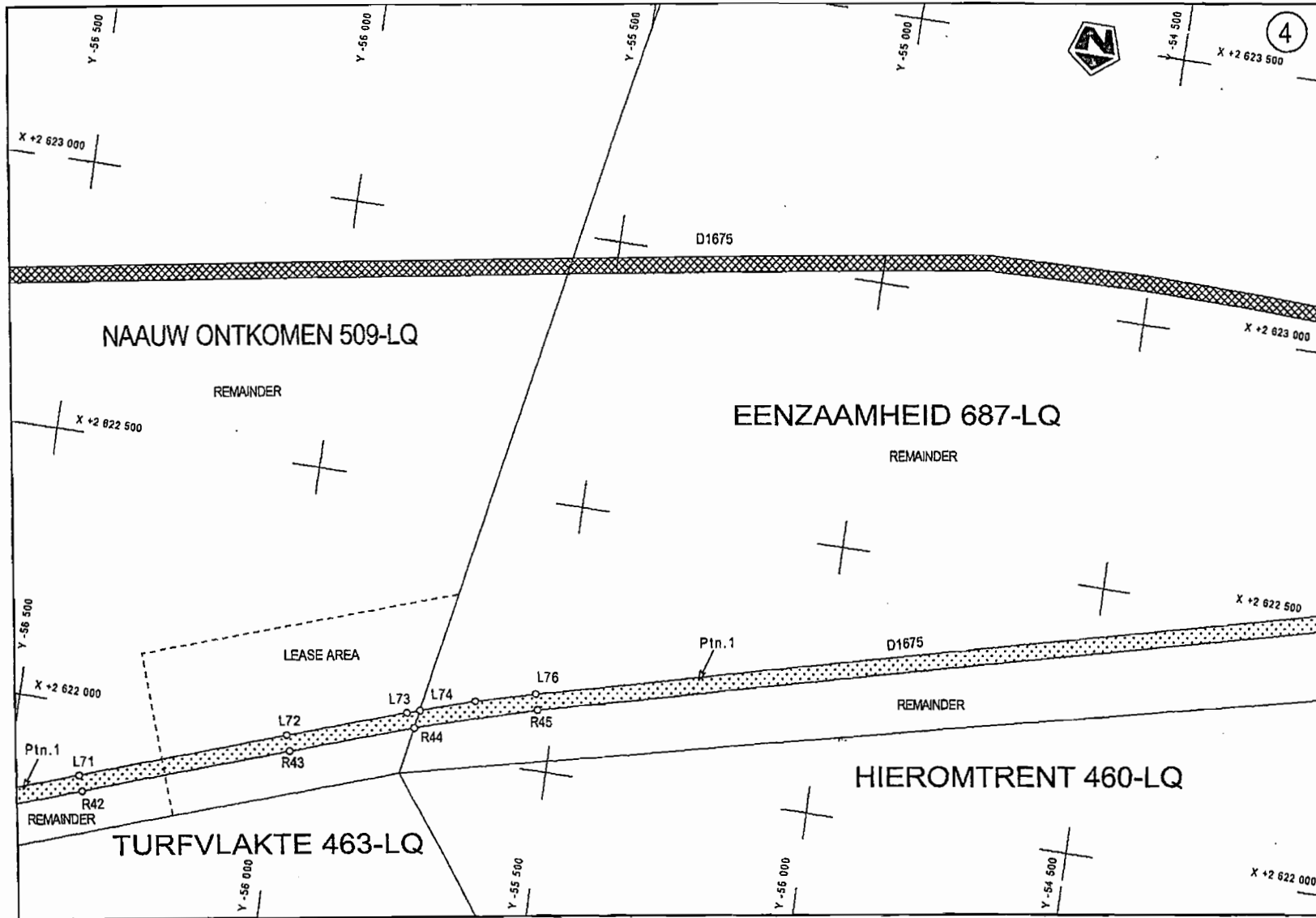
DIE FIGUUR: L21 TOT L40 VERTEENWOORDIG DIE PROKLAMASIE VAN DIE VERLEGGING VAN DIE BETROKKE GEDEELTE VAN PROVINSIALE DISTRIKSPAD D2001 OOR GEDEELTE 10 VAN DIE PLAAS HANGLIP 508 - LQ SOOS BEDOEL DEUR DIE PUBLIKASIE DAARVAN IN DIE PROVINSIALE KOERANT EN GETOON IN DETAIL OP DIE ANGEHEGTE PLANNE.

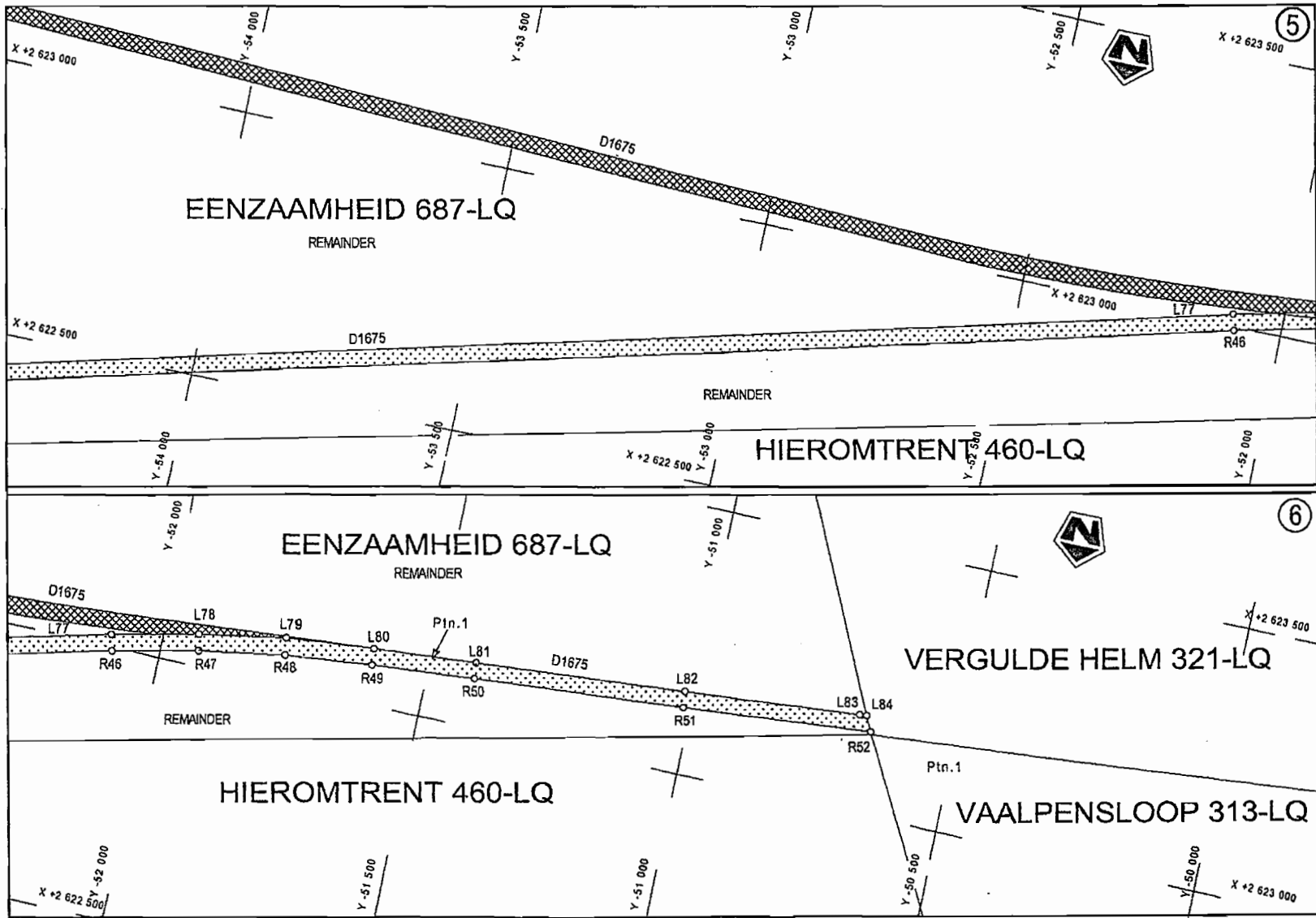




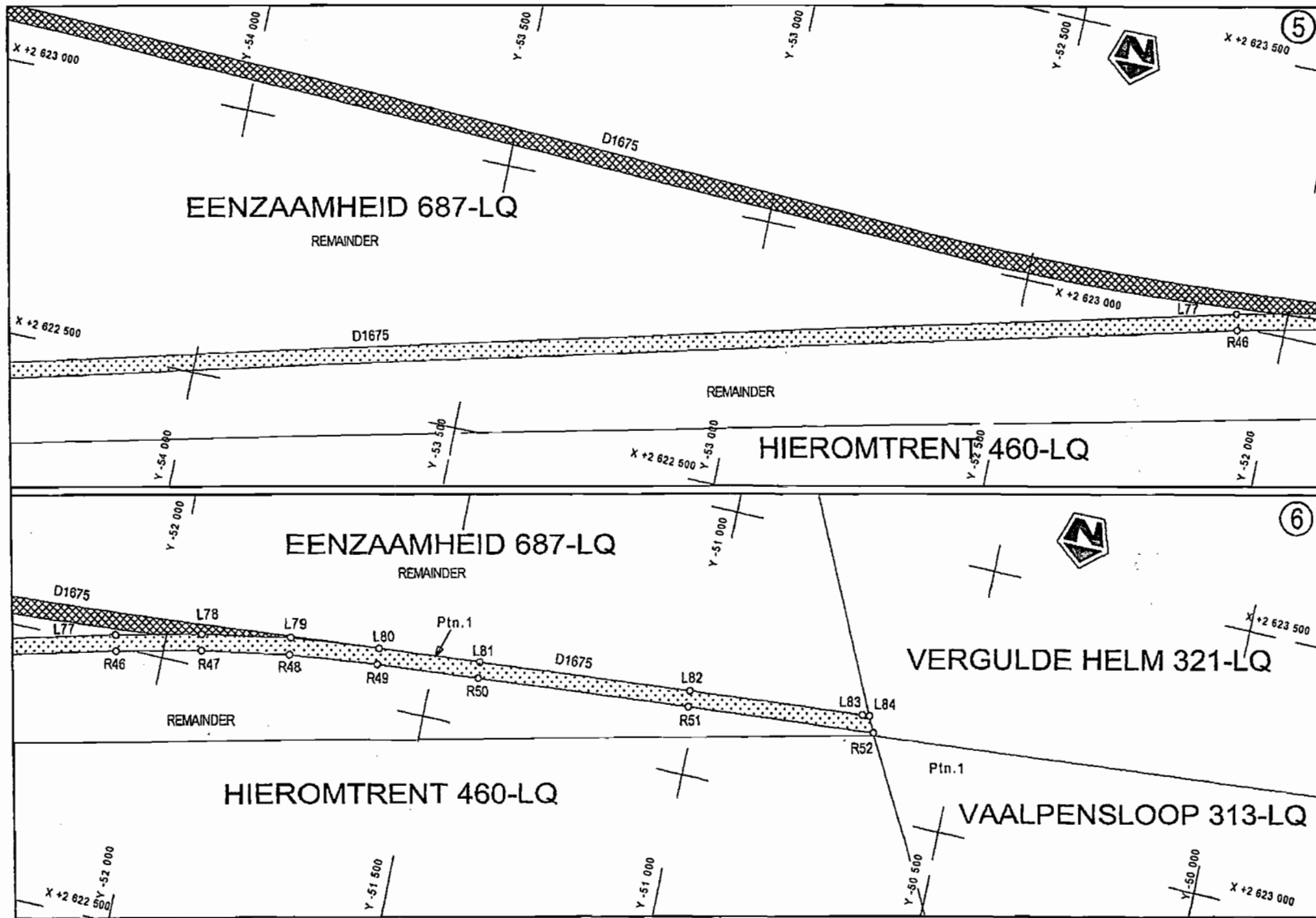








Coetsee Nel Incorporated - Lydenburg



Coetsee Nel Incorporated (013) 235 2791

PADRESERWE KOÖRDINATE / ROAD RESERVE CO-ORDINATES						
LINKERKANT/LEFT HAND SIDE			REGTERKANT/RIGHT HAND SIDE			
	Y	X	WG 27°		Y	X
L1	-62 989.80	2 620 914.41		R1	-62 857.56	2 620 803.62
L2	-62 949.86	2 620 900.22		R2	-62 881.69	2 620 841.50
L3	-62 927.56	2 620 903.01		R3	-62 884.60	2 620 861.73
L4	-62 887.62	2 620 926.98		R4	-62 865.02	2 620 908.50
L5	-62 808.69	2 621 018.23		R5	-62 827.92	2 620 952.75
L6	-62 805.45	2 621 020.42		R6	-62 791.88	2 620 989.71
L7	-62 758.54	2 621 051.25		R7	-62 769.81	2 621 007.08
L8	-62 684.39	2 621 085.20		R8	-62 748.01	2 621 022.07
L9	-61 603.75	2 621 523.77		R9	-62 696.96	2 621 047.74
L10	-61 261.73	2 621 663.01		R10	-61 261.91	2 621 629.88
L11	-61 173.44	2 621 698.48		R11	-61 169.57	2 621 667.47
L12	-61 018.37	2 621 761.32		R12	-61 007.11	2 621 733.59
L13	-60 886.47	2 621 809.36		R13	-60 877.38	2 621 779.19
L14	-60 750.27	2 621 843.58		R14	-60 744.03	2 621 812.75
L15	-60 611.31	2 621 863.60		R15	-60 608.12	2 621 833.77
L16	-60 576.04	2 621 866.16		R16	-60 568.67	2 621 836.18
L17	-60 471.33	2 621 873.69		R17	-60 470.87	2 621 842.18
L18	-60 331.05	2 621 867.75		R18	-60 333.38	2 621 837.80
L19	-60 191.59	2 621 851.86		R19	-60 196.95	2 621 820.77
L20	-60 111.12	2 621 836.31		R20	-60 062.73	2 621 790.43
L21	-60 063.05	2 621 841.61		R21	-59 933.06	2 621 746.64
L22	-60 054.10	2 621 874.67		R22	-59 796.82	2 621 688.33
L23	-60 012.83	2 622 008.32		R23	-59 760.46	2 621 673.39
L24	-59 962.46	2 622 138.88		R24	-59 704.18	2 621 650.31
L25	-59 903.04	2 622 265.62		R25	-59 675.95	2 621 640.62
L26	-59 778.39	2 622 509.37		R26	-59 642.05	2 621 633.27
L27	-59 744.39	2 622 562.07		R27	-59 602.31	2 621 615.43
L28	-59 700.41	2 622 607.23		R28	-59 567.88	2 621 604.14
L29	-59 648.12	2 622 642.39		R29	-59 513.30	2 621 587.29
L30	-59 335.66	2 622 812.31		R30	-59 394.45	2 621 556.65
L31	-59 351.47	2 622 769.89		R31	-59 220.69	2 621 512.58
L32	-59 633.89	2 622 616.14		R32	-59 044.27	2 621 480.97
L33	-59 681.11	2 622 584.22		R33	-58 866.16	2 621 462.02
L34	-59 720.88	2 622 543.42		R34	-58 305.24	2 621 422.43
L35	-59 751.60	2 622 495.64		R35	-58 103.31	2 621 414.97
L36	-59 876.33	2 622 251.97		R36	-57 901.36	2 621 421.02
L37	-59 934.83	2 622 127.12		R37	-57 700.27	2 621 440.65
L38	-59 984.50	2 621 998.49		R38	-57 500.69	2 621 472.49
L39	-60 025.14	2 621 866.77		R39	-57 301.55	2 621 509.89
L40	-60 034.03	2 621 834.05		R40	-57 108.86	2 621 571.97
L41	-59 994.65	2 621 807.30		R41	-56 737.89	2 621 707.84
L42	-59 920.75	2 621 779.80		R42	-56 359.69	2 621 838.06
L43	-59 857.25	2 621 757.71		R43	-55 981.50	2 621 968.36
L44	-59 779.34	2 621 734.83		R44	-55 755.98	2 622 045.62
L45	-59 742.07	2 621 722.61		R45	-55 531.42	2 622 112.90
L46	-59 683.94	2 621 703.61		R46	-52 089.47	2 622 993.14
L47	-59 656.65	2 621 692.40		R47	-51 929.60	2 623 029.40
L48	-59 625.26	2 621 678.85		R48	-51 767.92	2 623 056.83
L49	-59 551.18	2 621 649.18		R49	-51 605.09	2 623 075.31
L50	-59 462.94	2 621 611.97		R50	-51 413.94	2 623 091.70
L51	-59 386.04	2 621 585.46		R51	-51 014.94	2 623 125.93

Vel Sheet	3	Van of	4
--------------	---	-----------	---

PADRESERWE KOÖRDINATE / ROAD RESERVE CO-ORDINATES						
LINKERKANT/LEFT HAND SIDE				REGTERKANT/RIGHT HAND SIDE		
	Y	X	WG 27°		X	
L52	-59 214.38	2 621	541.92	R52	-50 661.41	2 623 156.14
L53	-59 040.05	2 621	510.64			
L54	-58 864.06	2 621	491.92			
L55	-58 761.33	2 621	485.52			
L56	-58 705.64	2 621	483.98			
L57	-58 659.69	2 621	496.20			
L58	-58 642.98	2 621	519.63			
L59	-58 613.06	2 621	517.54			
L60	-58 614.76	2 621	493.37			
L61	-58 571.12	2 621	472.63			
L62	-58 521.37	2 621	467.71			
L63	-58 303.16	2 621	452.31			
L64	-58 103.23	2 621	444.92			
L65	-57 903.29	2 621	450.97			
L66	-57 704.19	2 621	470.38			
L67	-57 507.07	2 621	504.31			
L68	-57 313.65	2 621	554.65			
L69	-57 122.40	2 621	611.33			
L70	-56 747.68	2 621	736.20			
L71	-56 369.48	2 621	866.44			
L72	-55 991.28	2 621	996.72			
L73	-55 773.50	2 622	071.68			
L74	-55 749.65	2 622	079.32			
L75	-55 649.33	2 622	111.45			
L76	-55 538.85	2 622	141.96			
L77	-52 096.91	2 623	022.22			
L78	-51 935.40	2 623	058.83			
L79	-51 772.35	2 623	088.00			
L80	-51 607.69	2 623	105.20			
L81	-51 416.73	2 623	121.56			
L82	-51 018.29	2 623	155.75			
L83	-50 688.79	2 623	184.12			
L84	-50 672.79	2 623	185.52			

Vel	4	Van	4
Sheet		of	