



THE PROVINCE OF MPUMALANGA
DIE PROVINSIE MPUMALANGA

**Provincial Gazette Extraordinary
Buitengewone Provinsiale Koerant**

(Registered as a newspaper) • (As 'n nuusblad geregistreer)

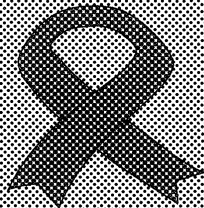
Vol. 21

NELSPRUIT, 22 MAY
MEI 2014

No. 2302

We all have the power to prevent AIDS

AIDS
affects
us all



A
new
struggle

Prevention is the cure

**AIDS
HELPLINE**

0800 012 322

DEPARTMENT OF HEALTH

N.B. The Government Printing Works will not be held responsible for the quality of "Hard Copies" or "Electronic Files" submitted for publication purposes



IMPORTANT NOTICE

The Government Printing Works will not be held responsible for faxed documents not received due to errors on the fax machine or faxes received which are unclear or incomplete. Please be advised that an "OK" slip, received from a fax machine, will not be accepted as proof that documents were received by the GPW for printing. If documents are faxed to the GPW it will be the sender's responsibility to phone and confirm that the documents were received in good order.

Furthermore the Government Printing Works will also not be held responsible for cancellations and amendments which have not been done on original documents received from clients.

CONTENTS • INHOUD

<i>No.</i>		<i>Page No.</i>	<i>Gazette No.</i>
GENERAL NOTICE			
185	Mpumalanga Nature Conservation Act (10/1998): Proclamation in terms of the Act: Amendments of Provincial Nature Reserves	3	2302

GENERAL NOTICE

NOTICE 185 OF 2014

MPUMALANGA TOURISM AND PARKS AGENCY

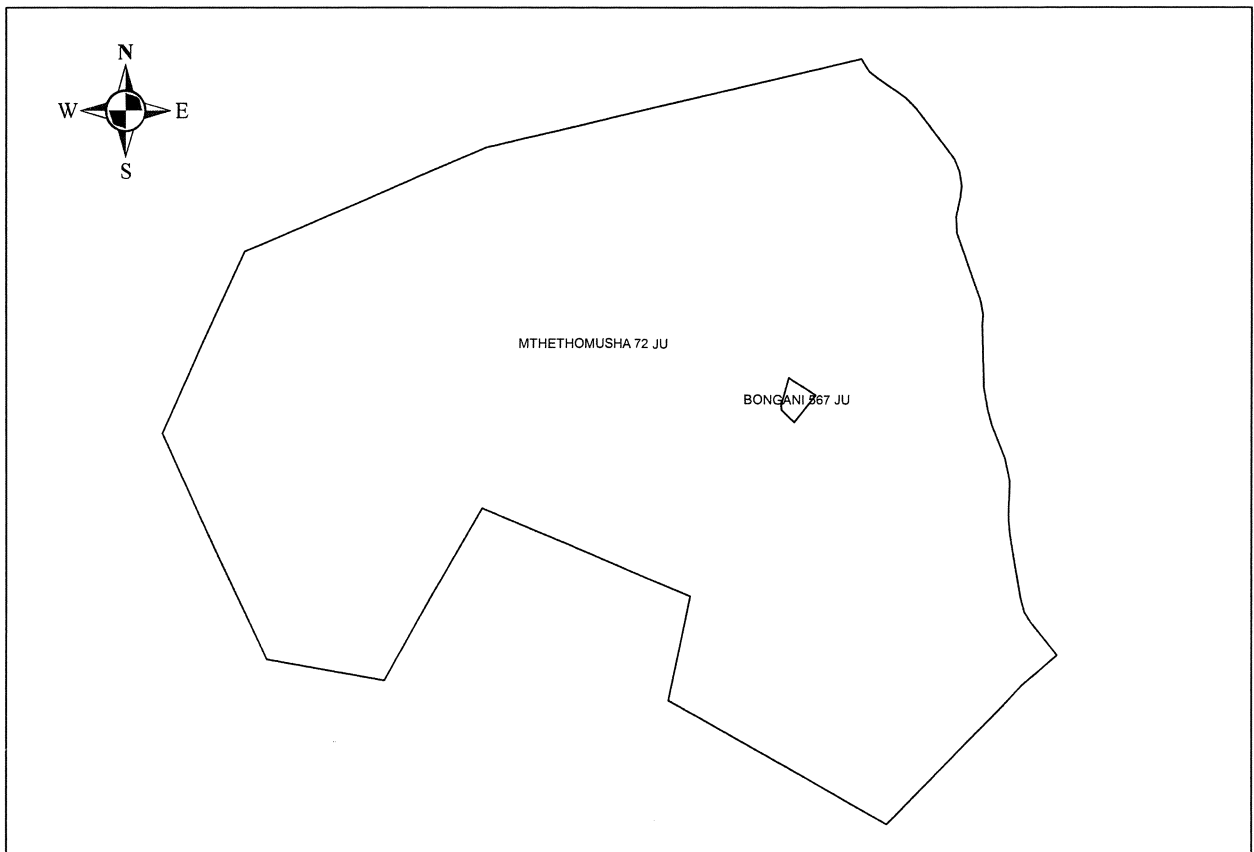
PROCLAMATION IN TERMS OF THE MPUMALANGA NATURE CONSERVATION ACT, 1998 (ACT NO. 10 OF 1998)

Take note that by the power vested in me by section 85 (a) of the Mpumalanga Nature Conservation Act, 1998, Act 10 of 1998, I hereby amend the definition of the geographical areas comprising the Provincial Nature Reserves, referred to in the schedules hereto. The Provincial Nature Reserves, their amended descriptions and names appear from Schedules 1 to 5 to this notice.

SCHEDULE 1:**DESCRIPTION OF PROVINCIAL NATURE RESERVES, MPUMALANGA PROVINCE****MTHETHOMUSHA NATURE RESERVE**

The Mthethomusha Nature Reserve situated in the Mpumalanga province; measuring 7501.4848 hectares in extent and defined as follows:

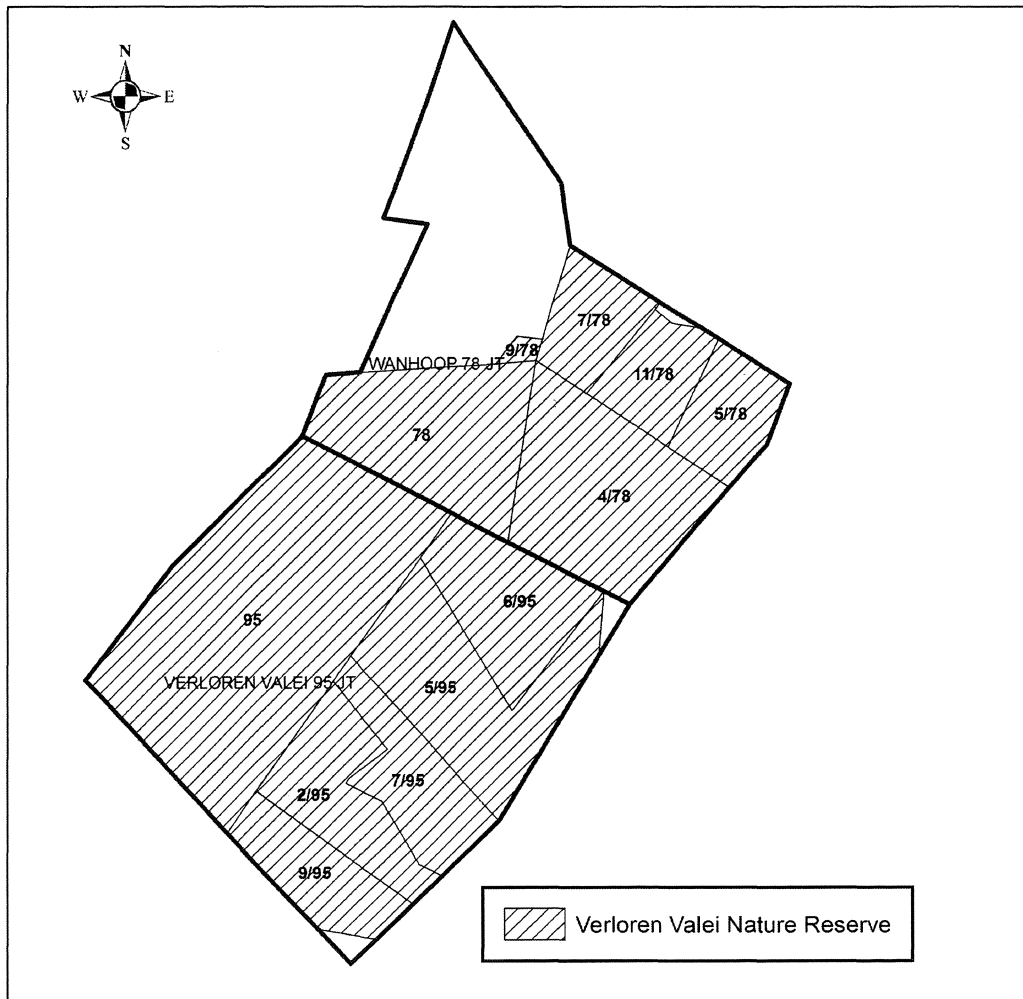
- 1) The farm Mthethomusha No. 71, Situated in the Mbombela Local Municipality, Division of JU, Mpumalanga Province; In extent: 7485.4758 hectares; Held by Deed of Transfer T149745/1999.
- 2) The farm Bongani No. 567, Situated in the Mbombela Local Municipality, Division of JU, Mpumalanga Province; In extent: 16.0090 hectares; Held by Deed of Transfer T140685/1999.



SCHEDULE 2:**DESCRIPTION OF PROVINCIAL NATURE RESERVES – MPUMALANGA PROVINCE****VERLOREN VALEI NATURE RESERVE**

The Verloren Valei Nature Reserve situated in the Mpumalanga Province, measuring in extent 6 022.2256 hectares and defined as follows:

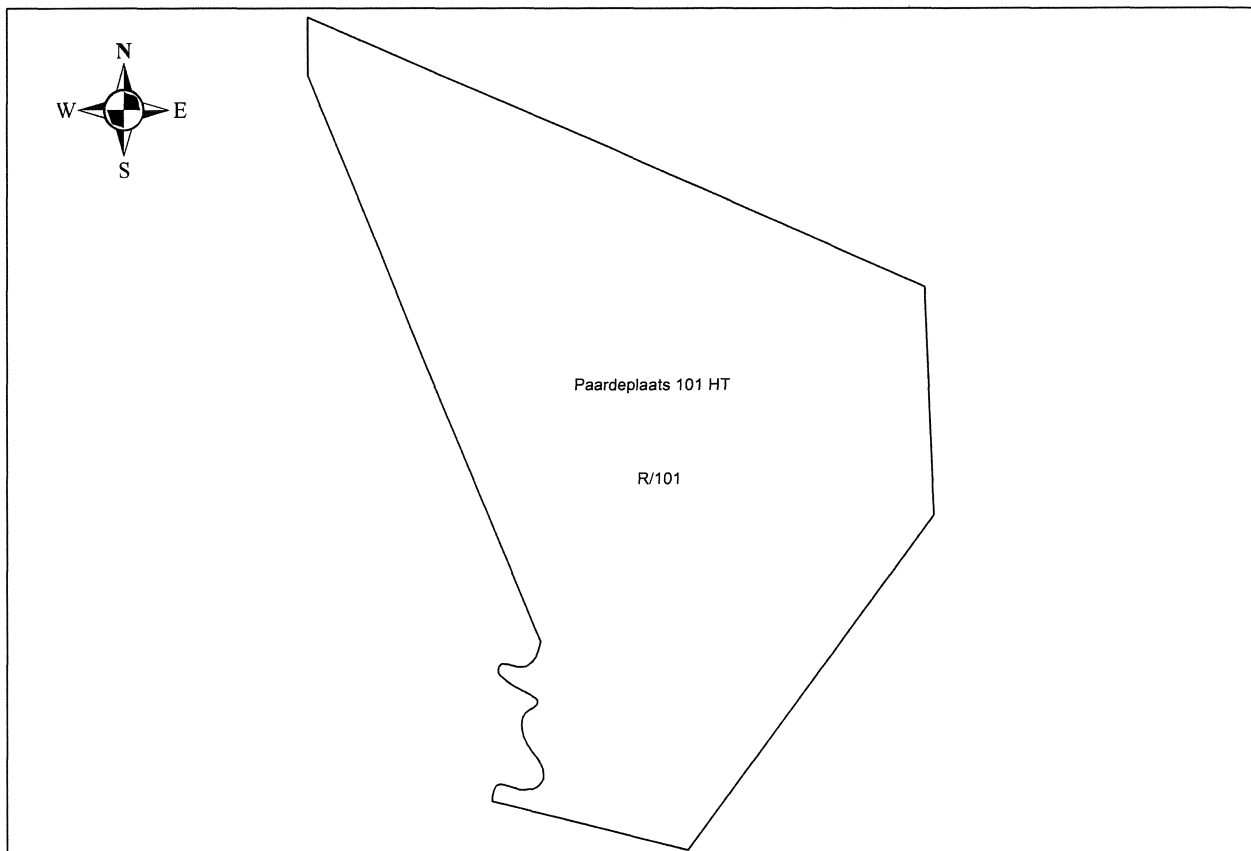
- 1) Portion 4 of the farm Wanhoop No. 78, Situated in the Thaba Chweu Local Municipality, Division of JT, Mpumalanga Province; In extent: 744.2521 hectares; Held by Deed of Transfer T25144/1984.
- 2) Portion 5 of the farm Wanhoop No. 78, Situated in the Thaba Chweu Local Municipality, Division of JT, Mpumalanga Province; In extent: 254.9013 hectares; Held by Deed of Transfer T1525/1985.
- 3) Portion 7 of the farm Wanhoop No. 78, Situated in the Thaba Chweu Local Municipality, Division of JT, Mpumalanga Province; In extent: 246.8971 hectares; Held by Deed of Transfer T17157/84.
- 4) Portion 9 of the farm Wanhoop No. 78, Situated in the Thaba Chweu Local Municipality, Division of JT, Mpumalanga Province; In extent: 20.2433 hectares; Held by Deed of Transfer T32965/1984.
- 5) Portion 11 of the farm Wanhoop No. 78, Situated in the Thaba Chweu Local Municipality, Division of JT, Mpumalanga Province; In extent: 235.6797 hectares; Held by Deed of Transfer T5726/1986.
- 6) The Remainder of the farm Wanhoop No. 78, Situated in the Thaba Chweu Local Municipality, Division of JT, Mpumalanga Province; In extent: 671.5769 hectares; Held by Deed of Transfer T32965/1984.
- 7) The Remainder of the farm Verloren Valei No. 95, Situated in the Thaba Chweu Local Municipality, Division of JT, Mpumalanga Province; In extent: 1731.3153 hectares; Held by Deed of Transfer T50848/84 and T57573/1984.
- 8) Portion 2 of the farm Verloren Valei No. 95, Situated in the Thaba Chweu Local Municipality, Division of JT, Mpumalanga Province; In extent: 389.7084 hectares; Held by Deed of Transfer T57573/1984.
- 9) Portion 5 of the farm Verloren Valei No. 95, Situated in the Thaba Chweu Local Municipality, Division of JT, Mpumalanga Province; In extent: 656.8644 hectares; Held by Deed of Transfer T51677/1984.
- 10) Portion 6 of the farm Verloren Valei No. 95, Situated in the Thaba Chweu Local Municipality, Division of JT, Mpumalanga Province; In extent: 428.2660 hectares; Held by Deed of Transfer T20653/84.
- 11) Portion 7 of the farm Verloren Valei No. 95, Situated in the Thaba Chweu Local Municipality, Division of JT, Mpumalanga Province; In extent: 342.6128 hectares; Held by Deed of Transfer T14411/1987.
- 12) Portion 9 of the farm Verloren Valei No. 95, Situated in the Thaba Chweu Local Municipality, Division of JT, Mpumalanga Province; In extent: 299.9083 hectares; Held by Deed of Transfer T37104/1985.



SCHEDULE 3:**DESCRIPTION OF PROVINCIAL NATURE RESERVES – MPUMALANGA PROVINCE****PAARDEPLAATS NATURE RESERVE**

The Paardeplaats Nature Reserve situated in the Mpumalanga Province, measuring in extent 2 441.0419 hectares and defined as follows:

- 1) The farm Paardeplaats No. 101, Situated in the Pixley ka Seme Local Municipality, Division of HT, Mpumalanga Province; In extent: 2441.0419 hectares; Held by Deed of Transfer T 6226/1998.

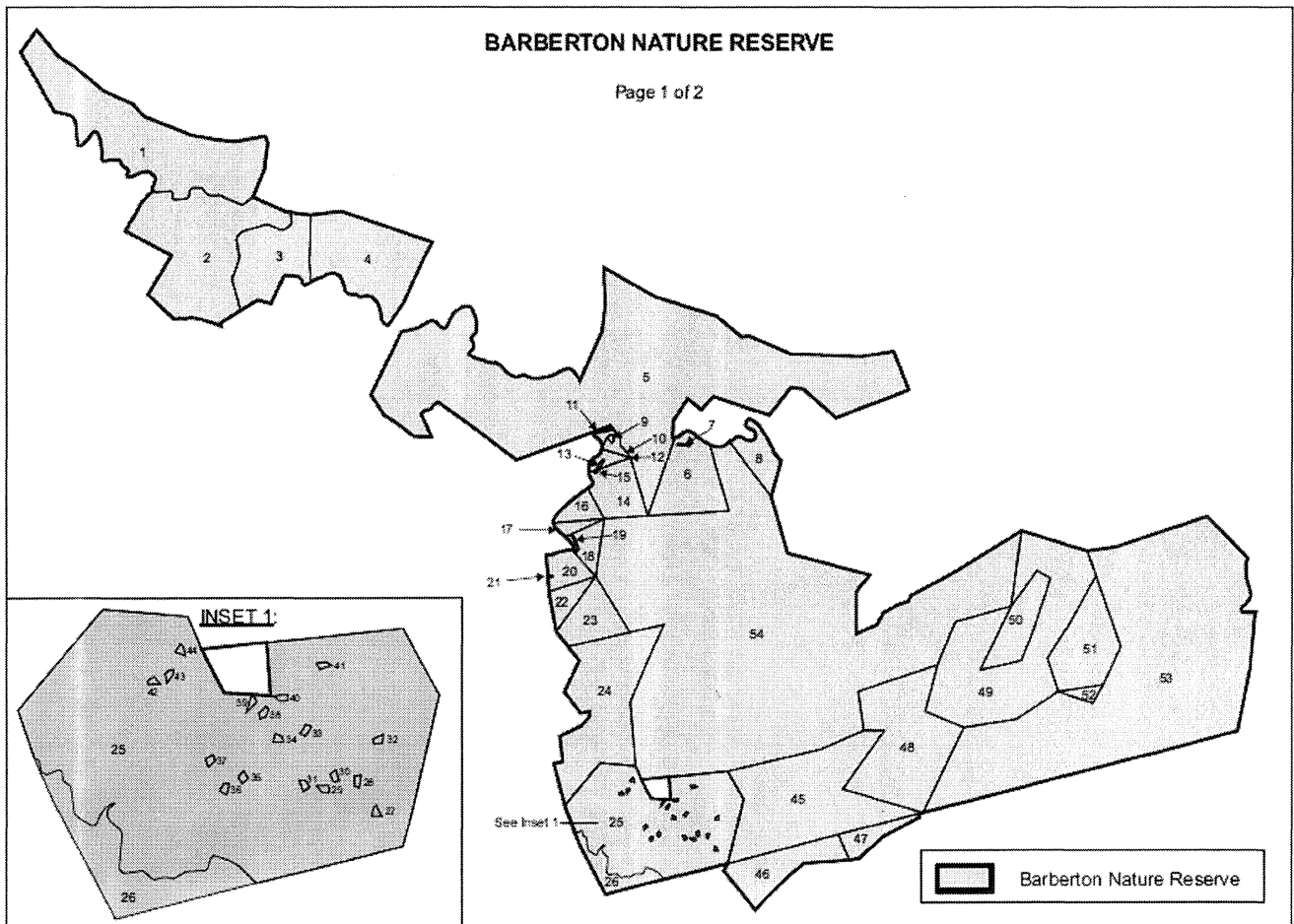


SCHEDULE 4:

DESCRIPTION OF PROVINCIAL NATURE RESERVES – MPUMALANGA PROVINCE

BARBERTON NATURE RESERVE

The Barberton Nature Reserve situated in the Mpumalanga province, measuring in extent 27 808.4725 hectares and defined as follows:



BARBERTON NATURE RESERVE

Page 2 of 2

Ref	Description	Ptn	Size (Ha)	Ref	Description	Ptn	Size (Ha)
1	HILLSIDE 459 JT	na	1 330.0790	28	DYCEDALE 368 JU	8/368	1.0617
2	BARBERTON NATURE RESERVE 1015 IT	na	1 620.3380	29	DYCEDALE 368 JU	9/368	1.0835
3	BARBERTON NATURE RESERVE 1016 JT	na	445.8430	30	DYCEDALE 368 JU	10/368	1.0451
4	BARBERTON NATURE RESERVE 955 JU	na	783.9820	31	DYCEDALE 368 JU	11/368	1.0822
5	BARBERTON NATURE RESERVE 954 JU	na	4 297.2370	32	DYCEDALE 368 JU	12/368	1.0576
6	SAFFRAAN 562 JU	R/562	407.6480	33	DYCEDALE 368 JU	13/368	1.0830
7	SAFFRAAN 562 JU	1/562	2.0800	34	DYCEDALE 368 JU	14/368	1.0138
8	KAMEELSPoor 563 JU	R/563	157.9930	35	DYCEDALE 368 JU	15/368	1.0208
9	DUBLIN 302 JU	4/302	3.1270	36	DYCEDALE 368 JU	16/368	1.0613
10	DUBLIN 302 JU	R/302	28.4340	37	DYCEDALE 368 JU	17/368	1.0906
11	DUBLIN 302 JU	1/302	15.2810	38	DYCEDALE 368 JU	18/368	1.0557
12	RAASBLAAR 561 JU	R/561	40.7590	39	DYCEDALE 368 JU	19/368	1.0304
13	RAASBLAAR 561 JU	1/561	2.6950	40	DYCEDALE 368 JU	20/268	1.0932
14	FLAMBOYANT 560 JU	R/560	239.8210	41	DYCEDALE 368 JU	21/368	1.0714
15	FLAMBOYANT 560 JU	1/560	0.8990	42	DYCEDALE 368 JU	22/368	1.0062
16	MOEPEL 559 JU	na	90.3510	43	DYCEDALE 368 JU	23/268	1.0208
17	MANDARIN 558 JU	na	38.6210	44	DYCEDALE 368 JU	24/368	1.0425
18	HAYWARD 310 JU	R/310	101.6960	45	WONDER SCHEUR 362 JU	na	1 188.2660
19	HAYWARD 310 JU	1/310	3.5240	46	TWELLO 373 JU	2/373	121.0200
20	MIMOSA 557 JU	R/557	121.6480	47	TWELLO 373 JU	3/373	343.3170
21	MIMOSA 557 JU	1/557	1.0270	48	COLOMBO 365 JU	na	954.8470
22	BRAMBER OOS 314 JU	na	95.6540	49	LANCASTER 359 JU	3/359	1 401.9760
23	WORRALL 352 JU	na	251.2490	50	LANCASTER 359 JU	1/359	264.0960
24	BICKENHALL 346 JU	R/346	934.4060	51	LANCASTER 359 JU	2/359	447.4530
25	DYCEDALE 368 JU	25/368	1 380.0512	52	LANCASTER 359 JU	R/359	36.0320
26	DYCEDALE 368 JU	26/368	147.2571	53	MHLAHLE 948 JU	na	4 043.1400
27	DYCEDALE 368 JU	7/368	1.0524	54	SHEBA 949 JU	na	6 447.6540

TOTAL 27 808.4735

SCHEDULE 5:

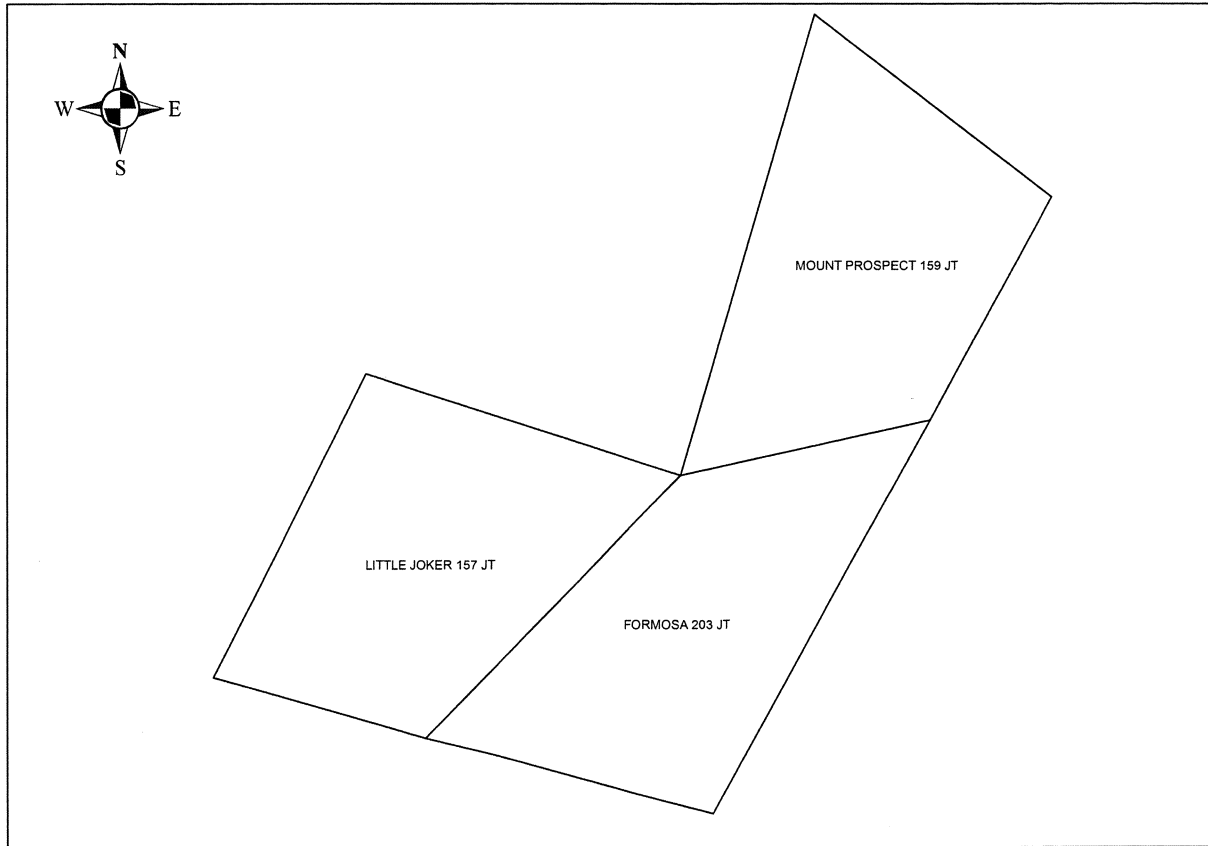
DESCRIPTION OF PROVINCIAL NATURE RESERVES – MPUMALANGA PROVINCE

LITTLE JOKER – FORMOSA – MOUNT PROSPECT NATURE RESERVE

The Little Joker-Formosa-Mount Prospect Nature Reserve situated in the Mpumalanga province and measuring 1284.11. hectares in extent and defined as follows:

- 1) The farm Formosa No. 203, Situated in the Thaba Chweu Local Municipality, Division of JT, Mpumalanga Province; In extent: 428.1561 hectares; Held by Deed of Transfer T 6982/1978.
- 2) The farm Mount Prospect No. 159, Situated in the Thaba Chweu Local Municipality, Division of JT, Mpumalanga Province; In extent: 428.2503 hectares.

- 3) The farm Little Joker No. 157, Situated in the Thaba Chweu Local Municipality, Division of JT, Mpumalanga Province; In extent: 427.7036 hectares; Held by Deed of Transfer T 6981/1978.



NOTICE – CHANGE OF TELEPHONE NUMBERS: GOVERNMENT PRINTING WORKS

As the mandated government security printer, providing world class security products and services, Government Printing Works has adopted some of the highly innovative technologies to best serve its customers and stakeholders. In line with this task, Government Printing Works has implemented a new telephony system to ensure most effective communication and accessibility. As a result of this development, our telephone numbers will change with effect from 3 February 2014, starting with the Pretoria offices.

The new numbers are as follows:

- Switchboard : 012 748 6001/6002
- Advertising : 012 748 6205/6206/6207/6208/6209/6210/6211/6212
- Publications Enquiries : 012 748 6052/6053/6058 GeneralEnquiries@gpw.gov.za
 - Maps : 012 748 6061/6065 BookShop@gpw.gov.za
 - Debtors : 012 748 6060/6056/6064 PublicationsDebtors@gpw.gov.za
 - Subscription : 012 748 6054/6055/6057 Subscriptions@gpw.gov.za
- SCM : 012 748 6380/6373/6218
- Debtors : 012 748 6236/6242
- Creditors : 012 748 6246/6274

Please consult our website at www.gpwonline.co.za for more contact details.

The numbers for our provincial offices in Polokwane, East London and Mmabatho will not change at this stage.