



THE PROVINCE OF MPUMALANGA
DIE PROVINSIE MPUMALANGA

**Provincial Gazette Extraordinary
Buitengewone Provinsiale Koerant**

(Registered as a newspaper) • (As 'n nuusblad geregistreer)

Vol. 22

NELSPRUIT, 7 JULY 2015
JULIE 2015

No. 2506

We all have the power to prevent AIDS

AIDS
affects
us all



A
new
struggle

Prevention is the cure

**AIDS
HELPLINE**

0800 012 322

DEPARTMENT OF HEALTH

N.B. The Government Printing Works will not be held responsible for the quality of "Hard Copies" or "Electronic Files" submitted for publication purposes



DISCLAIMER:

Government Printing Works reserves the right to apply the 25% discount to all Legal and Liquor notices that comply with the business rules for notice submissions for publication in gazettes.

National, Provincial, Road Carrier Permits and Tender notices will pay the price as published in the Government Gazettes.

For any information, please contact the eGazette Contact Centre on 012-748 6200 or email info.egazette@gpw.gov.za

CONTENTS • INHOUD

<i>No.</i>		<i>Page No.</i>	<i>Gazette No.</i>
GENERAL NOTICE • ALGEMENE KENNISGEWING			
425	Local Government: Municipal Demarcation Act (27/1998): Determination or re-determination of municipal boundaries	3	2506
425	Wet op Plaaslike Regering: Munisipale Afbakening (27/1998): Bepaling of herbepaling van munisipale grense	5	2506

GENERAL NOTICE ALGEMENE KENNISGEWING

NOTICE 425 OF 2015

MUNICIPAL DEMARCATION BOARD DETERMINATION OR RE-DETERMINATION OF MUNICIPAL BOUNDARIES NOTICE IN TERMS OF SECTION 21 OF THE LOCAL GOVERNMENT: MUNICIPAL DEMARCATION ACT, 1998 (Mpumalanga)

In terms Section 21 of the Local Government: Municipal Demarcation Act, 1998 (Act No. 27 of 1998) the Municipal Demarcation Board (MDB) has determined or re-determined the municipal boundaries of the municipalities referred to in the Schedule.

Any person aggrieved by a determination or re-determination may submit objections in writing to:

The Municipal Demarcation Board
Private Bag X 123,
CENTURION 0046
Fax: 086 524 8643
E-mail: fazel@demarcation.org.za

Objections must reach the office of the MDB within 30 days of publication of this notice, and must, if possible, be based on the criteria provided for in section 24 and 25 of the Demarcation Act, 1998.

The reference number (**DEM number**) appearing in the first column of the Schedule must be quoted in any correspondence with the Board.

A copy of this notice, MDB Circular 8/2015, and maps can be downloaded from the MDB website www.demarcation.org.za or can be requested by sending an email to daniel@demarcation.org.za

In the case of a discrepancy between the Schedule and the map, the map shall prevail, and in the event of any inconsistency between the English version and any other translation of this notice, the English version shall prevail.

JANE THUPANA
CHAIRPERSON: MUNICIPAL DEMARCATION BOARD

SCHEDULE

Reference number	Affected municipalities	Section 21 determination or re-determination
DEM4537	Umjindi Local Municipality (MP323) and Mbombela Local Municipality (MP322)	In terms of section 21 of the Local Government: Municipal Demarcation Act, 1998, the MDB has: <ul style="list-style-type: none">• re-determined the municipal boundaries of Umjindi Local Municipality (MP323) and Mbombela Local Municipality (MP322) by amalgamating their municipal areas; and• determined the municipal boundaries of the new category B municipal area as reflected by the attached map.

KENNISGEWING 425 VAN 2015**MUNISIPALE AFBAKENINGSRAAD
KENNISGEWING INGEVOLGE ARTIKEL 21 VAN DIE WET OP PLAASLIKE
REGERING: MUNISIPALE AFBAKENING, 1998
(Mpumalanga)**

Die Munisipale Afbakeningsraad het ingevolge artikel 21 van die Wet op Plaaslike Regering: Munisipale Afbakening, 1998 (Wet No. 27 van 1998), die munisipale grense van die munisipaliteite waarna in die Bylae verwys word, bepaal of herbepaal.

Enige persoon wat gegrief is deur 'n bepaling of herbepaling mag skriftelike besware stuur aan:

Die Munisipale Afbakeningsraad
Privaatsak X 123,
CENTURION 0046
Faks: 086 524 8643
E-pos: fazel@demarcation.org.za

Skriftelike besware moet die Raad bereik binne 30 dae vanaf die datum van publikasie van hierdie kennisgewing, en, waar moontlik, moet die besware gebaseer wees op die kriteria waarvoor in Artikels 24 en 25 van die Afbakeningswet, 1998, voorsiening gemaak word.

Die verwysingsnommer (**DEM nommer**) wat in die eerste kolom van die Bylae verskyn, moet verstrek word in enige korrespondensie met die Raad.

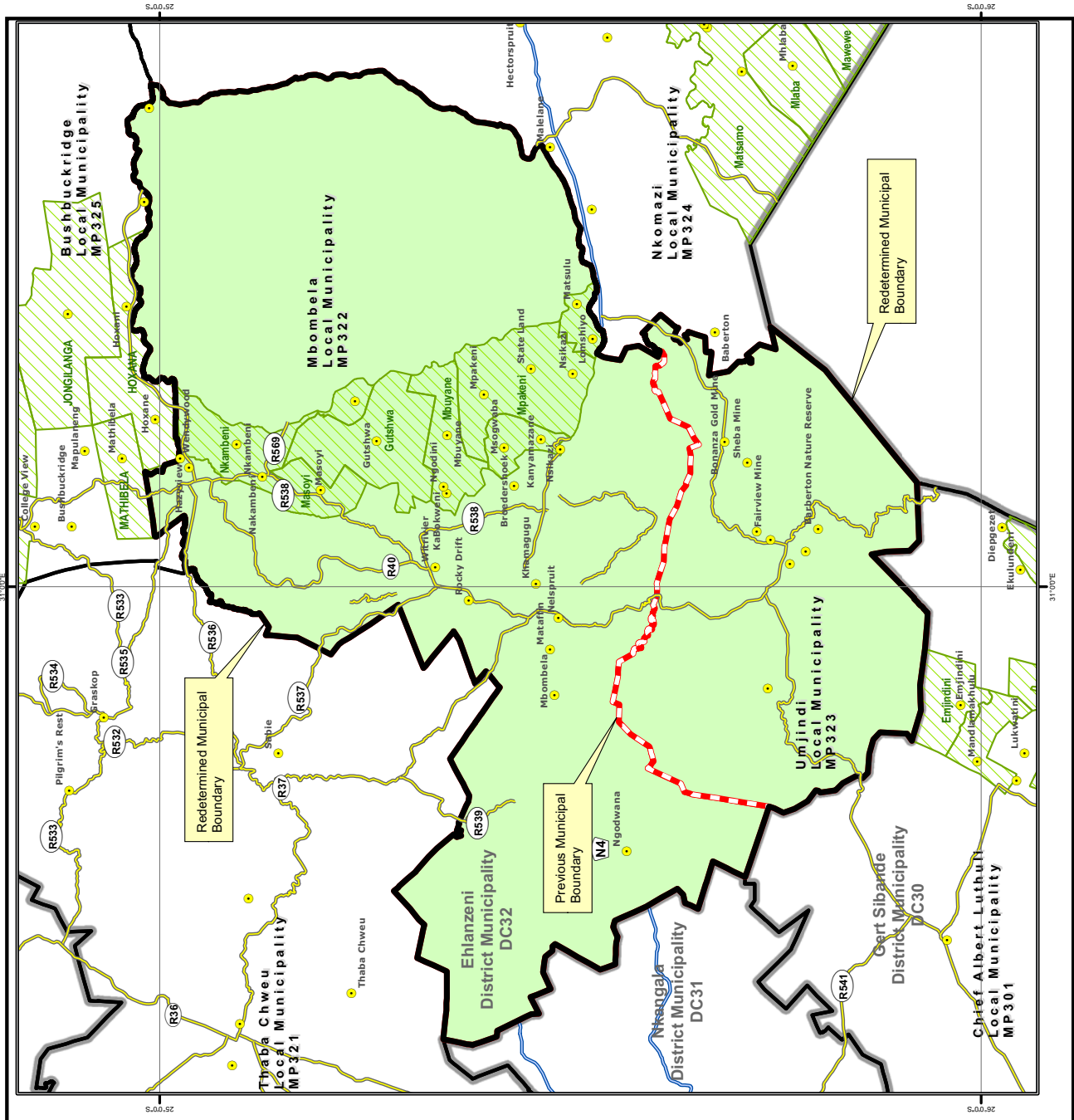
'n Afskrif van hierdie kennisgewing, die Raad se Omsendskrywe 8/2015, en kaarte kan afgelaai word van die Raad se webwerf www.demarcation.org.za of kan aangevra word deur 'n e-pos te stuur aan daniel@demarcation.org.za

Indien daar 'n verskil is tussen die Bylae en die kaart, sal die kaart geld, en sou enige vertaling van hierdie kennisgewing verskil van die Engelse weergawe, sal laasgenoemde geld.

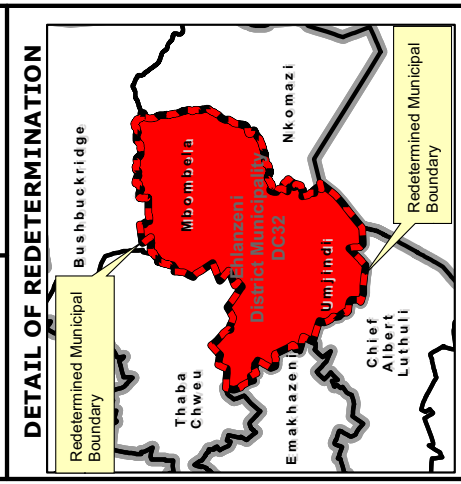
JANE THUPANA
VOORSITSTER: MUNISIPALE AFBAKENINGSRAAD

BYLAE

Verwysingsnommer	Geaffekteerde munisipaliteite	Artikel 21 bepaling of herbepaling
DEM4537	Umjindi Plaaslike Munisipaliteit (MP323) en Mbombela Plaaslike Munisipaliteit (MP322)	Ingevolge artikel 21 van die Wet op Plaaslike Regering, 1998, het die Munisipale Afbakeningsraad: <ul style="list-style-type: none">• die munisipale grense van Umjindi Plaaslike Munisipaliteit (MP323) en Mbombela Plaaslike Munisipaliteit (MP322) herbepaal deur hul munisipale gebiede te amalgameer; en• die munisipale grense van die nuwe Kategorie B munisipale gebied, bepaal, soos aangedui op die bygaande kaart.

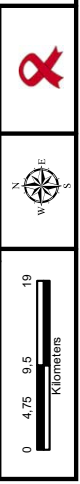
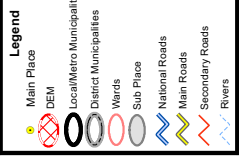


	MAP NUMBER	DATE
	DEM4537	June 2015



In terms of Section 21 of the Local Government: Municipal Demarcation Act 27 of 1998 the Municipal Demarcation Board has re-determined the municipal boundaries of Mbombela Local Municipality (MP322) and Umjindi Local Municipality (MP323), by amalgamating their municipal areas; and determined the municipal boundaries of the new category B municipal area

Additional info relating to this map can be obtained from the Municipal Demarcation Board:
 Tel: (012) 342 2481
 Fax: (012) 342 2480
 E-mail: info@demarcation.org.za
 Internet download: www.demarcation.org.za



Printed by and obtainable from the Government Printer, Bosman Street, Private Bag X85, Pretoria, 0001. Tel. (012) 748 6052, 748 6053, 748 6058
Also available at the **Provincial Legislature: Mpumalanga**, Private Bag X11289, Room 114, Civic Centre Building, Nel Street, Nelspruit, 1200. Tel. (01311) 5-2133
Gedruk deur en verkrygbaar by die Staatsdrukker, Bosmanstraat, Privaat Sak X85, Pretoria, 0001. Tel. (012) 748 6052, 748 6053, 748 6058
Ook verkrygbaar by die **Provinsiale Wetgewer: Mpumalanga**, Privaat Sak X11289, Kamer 114, Burgersentrum, Nelstraat, Nelspruit, 1200. Tel. (01311) 5-2133