

**NORTHERN CAPE PROVINCE**

**PROFENSI YA KAPA-BOKONE**



**NOORD-KAAP PROVINSIE**

**IPHONDO LOMNTLA KOLONI**

**Provincial Gazette  
Kasete ya Profensi**

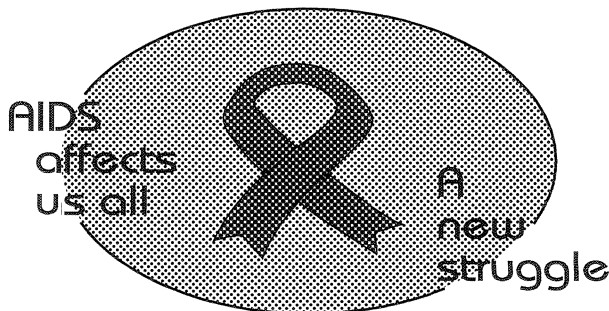
**iGazethi YePhondo  
Provinsiale Koerant**

**Vol. 20**

**KIMBERLEY, 11 FEBRUARY 2013  
FEBRUARIE**

**No. 1668**

**We all have the power to prevent AIDS**



**AIDS  
HELPLINE**

**0800 012 322**

**DEPARTMENT OF HEALTH**

**Prevention is the cure**

*N.B. The Government Printing Works will not be held responsible for the quality of "Hard Copies" or "Electronic Files" submitted for publication purposes*



**IMPORTANT NOTICE**

The Government Printing Works will not be held responsible for faxed documents not received due to errors on the fax machine or faxes received which are unclear or incomplete. Please be advised that an "OK" slip, received from a fax machine, will not be accepted as proof that documents were received by the GPW for printing. If documents are faxed to the GPW it will be the sender's responsibility to phone and confirm that the documents were received in good order.

Furthermore the Government Printing Works will also not be held responsible for cancellations and amendments which have not been done on original documents received from clients.

**CONTENTS • INHOUD**

*No.*

*Page  
No.      Gazette  
            No.*

**MUNICIPAL NOTICE**

4 Municipal Ordinance (20/1974): Ubuntu Municipality: Closing of portion of Remainder Erf 1553, Victoria West (public place) adjoining Remainder Erf 1, Victoria West .....	3	1668
---	---	------

---

## MUNICIPAL NOTICE

---

### MUNICIPAL NOTICE 4

#### Ubuntu Municipality

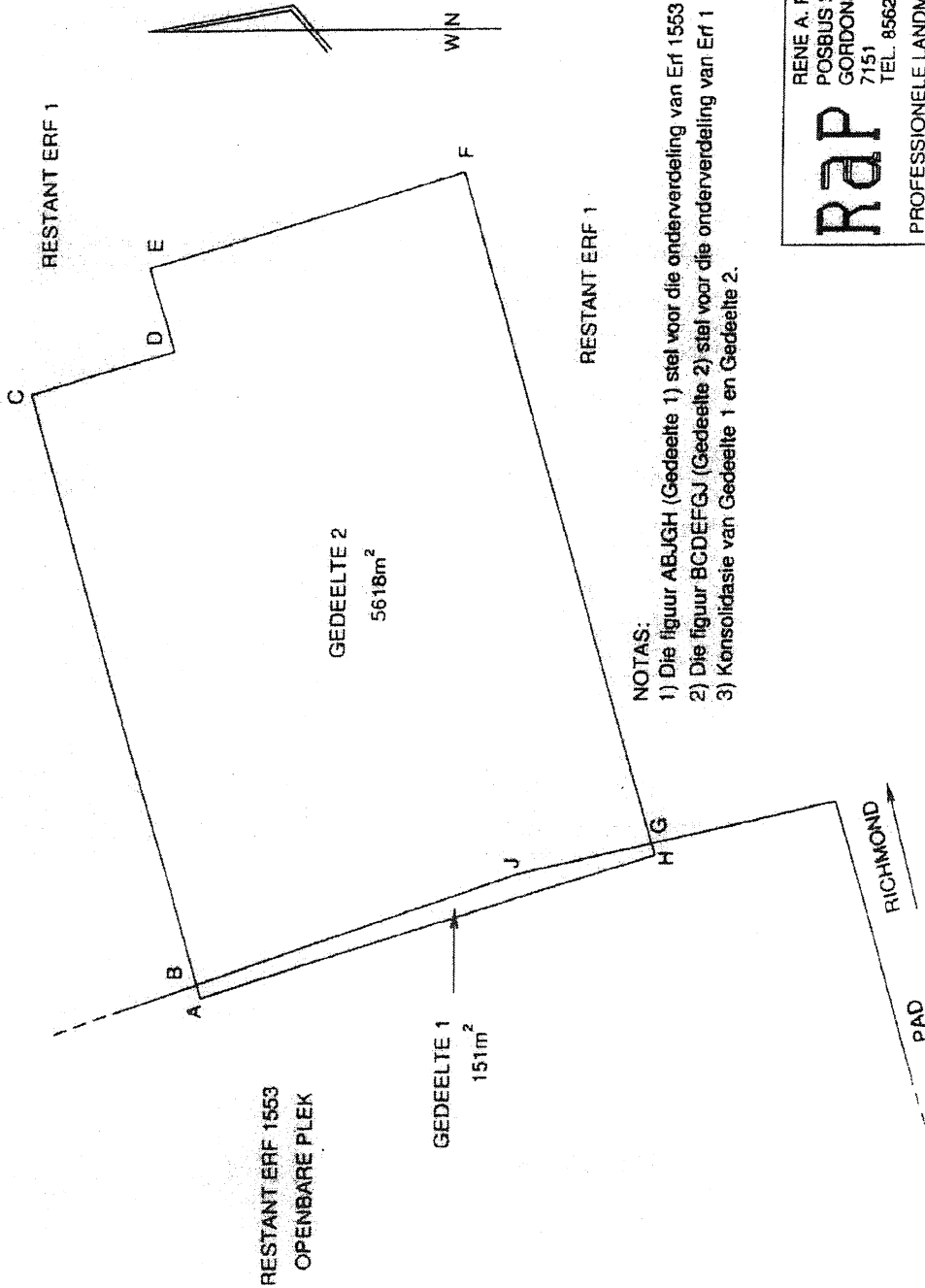
#### CLOSING OF PORTION OF REMAINDER ERF 1553 VICTORIA WEST (PUBLIC PLACE) ADJOINING REMAINDER ERF 1 VICTORIA WEST

Notice is hereby given in terms of section 137(1) of the Municipal Ordinance No 20 of 1974 that the Council has closed a portion of Remainder erf 1553 Victoria West as shown on Plan/Sketch RAP.

**MUNICIPAL MANAGER  
UBUNTU MUNICIPALITY**

VOORGESTELDE ONDERVERDELING VAN ERWE 1 EN 1553 (OPENBARE PLEK) VICTORIA WES

SKAAL 1:750



- NOTAS:
- 1) Die figuur ABJGH (Gedeelte 1) stel voor die onderverdeling van Erf 1553
  - 2) Die figuur BCDEFGJ (Gedeelte 2) stel voor die onderverdeling van Erf 1
  - 3) Konsolidasie van Gedeelte 1 en Gedeelte 2.

**RAP**  
 RENE A. PESCH  
 POSBUS 319  
 GORDONSBAAI  
 7151  
 TEL. 8562971  
 PROFESSIONELE LANDMETER

Printed by and obtainable from the Government Printer, Bosman Street, Private Bag X85, Pretoria, 0001. Tel: (012) 334-4507, 334-4511, 334-4509, 334-4515  
 Also available at the Northern Cape Provincial Legislature, Private Bag X5066, Nobengula Extension, Kimberley, 8301.  
 Tel. (direct line): (053) 839-8073. Fax: (053) 839-8094  
 Gedruk deur en verkrygbaar by die Staatsdrukker, Bosmanstraat, Privaat Sak X85, Pretoria, 0001. Tel: (012) 334-4507, 334-4511, 334-4509, 334-4515  
 Ook verkrygbaar by die Noord-Kaap Provinsiale Wetgewer, Privaatsak X5066, Nobengula-uitbreiding, Kimberley, 8301.  
 Tel. (direkte lyn): (053) 839-8073. Faks: (053) 839-8094