

**KWAZULU-NATAL PROVINCE
KWAZULU-NATAL PROVINSIE
ISIFUNDAZWE SAKWAZULU-NATALI**

**Provincial Gazette • Provinsiale Koerant • Igazethi Yesifundazwe
GAZETTE EXTRAORDINARY—BUITENGEWONE KOERANT—IGAZETHI EYISIPESHELI**

*(Registered at the post office as a newspaper) • (As 'n nuusblad by die poskantoor geregistreer)
(Irejistiwee njengephephandaba eposihhovisi)*

Vol. 2

PIETERMARITZBURG,

30 MAY 2008
30 MEI 2008
30 UNHLABA 2008

No. 107

CONTENTS

<i>No.</i>		<i>Page</i>
	PROVINCIAL NOTICE • PROVINSIALE KENNISGEWING	
102	Local Government: Municipal Demarcation Act (27/1998) and Local Government: Municipal Structures Act (117/1998) (KwaZulu-Natal): Municipal Demarcation Board: Notice in terms of section 21	3
102	Wet op Plaaslike Regering: Munisipale Afbakening (27/1998) en Wet op Plaaslike Regering: Munisipale Strukture (117/1998) (KwaZulu-Natal): Munisipale Afbakeningsraad: Kennisgewing ingevolge artikel 21	4

PROVINCIAL NOTICE—PROVINSIALE KENNISGEWING

No. 102**30 May 2008**

**MUNICIPAL DEMARCATION BOARD
NOTICE IN TERMS OF SECTION 21 OF THE LOCAL GOVERNMENT: MUNICIPAL
DEMARCATION ACT, 1998, READ WITH SECTION 2 & 4 OF THE LOCAL
GOVERNMENT: MUNICIPAL STRUCTURES ACT, 1998
(KwaZulu-Natal)**

Notice is hereby given in terms of section 21 of the Local Government: Municipal Demarcation Act, 1998 (Act No. 27 of 1998), read with section 2 and 4 of the Local Government: Municipal Structures Act (Act 117 of 1998) that the Municipal Demarcation Board's has:

- a) re-determined the boundaries of Umgungundlovu District Municipality (DC22) by excluding the municipal area of The Msunduzi Local Municipality (KZN225) from the district area;
- b) determined that the area within the current boundaries of The Msunduzi Local Municipality must have a category A municipality.

Members of the public are invited to submit written representations and views to:

**The Municipal Demarcation Board
Private Bag X 28
Hatfield
0028
Fax: 012-3422480
E-mail: robert@demarcation.org.za**

Objections must reach the above office *within 30 days of the date of publication of this notice*.

Objections must be based on the criteria provided for in Section 2 of the Structures Act, 1998, and Sections 24 and 25 of the Demarcation Act, 1998.

Reference number **DEM386** must be quoted in any correspondence with the Board.

**VUYO MLOKOTI
CHAIRPERSON: MUNICIPAL DEMARCATION BOARD
Reference: DEM386**

No. 102

30 Mei 2008

MUNISIPALE AFBAKENINGSRAAD
KENNISGEWING INGEVOLGE ARTIKEL 21 VAN DIE WET OP PLAASLIKE
REGERING: MUNISIPALE AFBAKENING, 1998, SAAMGELEES MET
ARTIKELS 2 EN 4 VAN DIE WET OP PLAASLIKE REGERING: MUNISIPALE
STRUKTURE, 1998
(KwaZulu-Natal)

Ingevolge artikel 21 van die Wet op Plaaslike Regering: Munisipale Afbakening, 1998 (Wet No. 27 van 1998), saamgelees met artikels 2 en 4 van die Wet op Plaaslike Regering: Munisipale Strukture, 1998 (Wet No. 117 van 1998) word hiermee kennis gegee dat die Munisipale Afbakeningraad:

- a) die munisipale grense van Umgungundluvu Distriksmunisipaliteit (DC22) herbepaal het deur die munisipale gebied van The Msunduzi Plaaslike Munisipaliteit (KZN225) uit te sluit van die distriksgebied;
- b) bepaal het dat die gebied binne die bestaande grense van The Msunduzi Plaaslike Munisipaliteit (KZN225) 'n Kategorie A munisipaliteit moet hê.

Die publiek word hiermee uitgenooi om skriftelike besware te stuur aan:

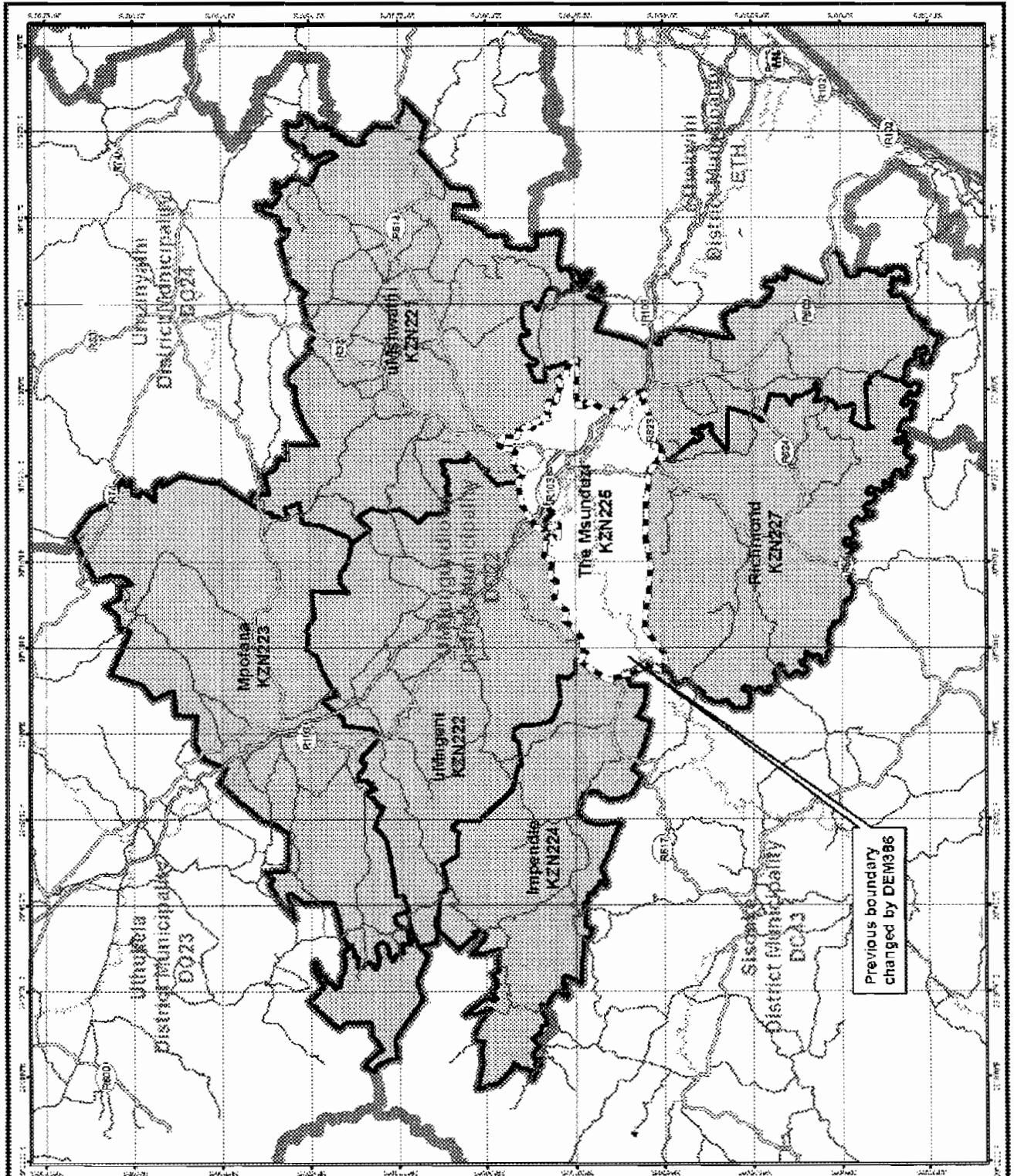
Die Munisipale Afbakeningsraad
Privaatsak X 28
HATFIELD
0028
Faks: 012-3422480
E-pos: robert@demarcation.org.za

Skriftelike besware moet die Raad bereik ***binne 30 dae vanaf die datum van publikasie van hierdie kennisgewing.***

Besware moet gebaseer wees op die kriteria waarvoor in Artikel 2 van die Strukturewet, 1998, en in Artikels 24 en 25 van die Afbakeningswet, 1998, voorsiening gemaak word.

Verwysingsnommer DEM 386 moet asseblief verstrek word in enige korrespondensie met die Raad.

VUYO MLOKOTI
VOORSITTER: MUNISIPALE AFBAKENINGSRAAD
Verwysing: DEM386



Previous boundary
changed by DEM386



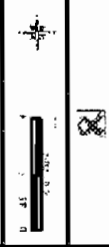
MAP NUMBER
DEM386_A

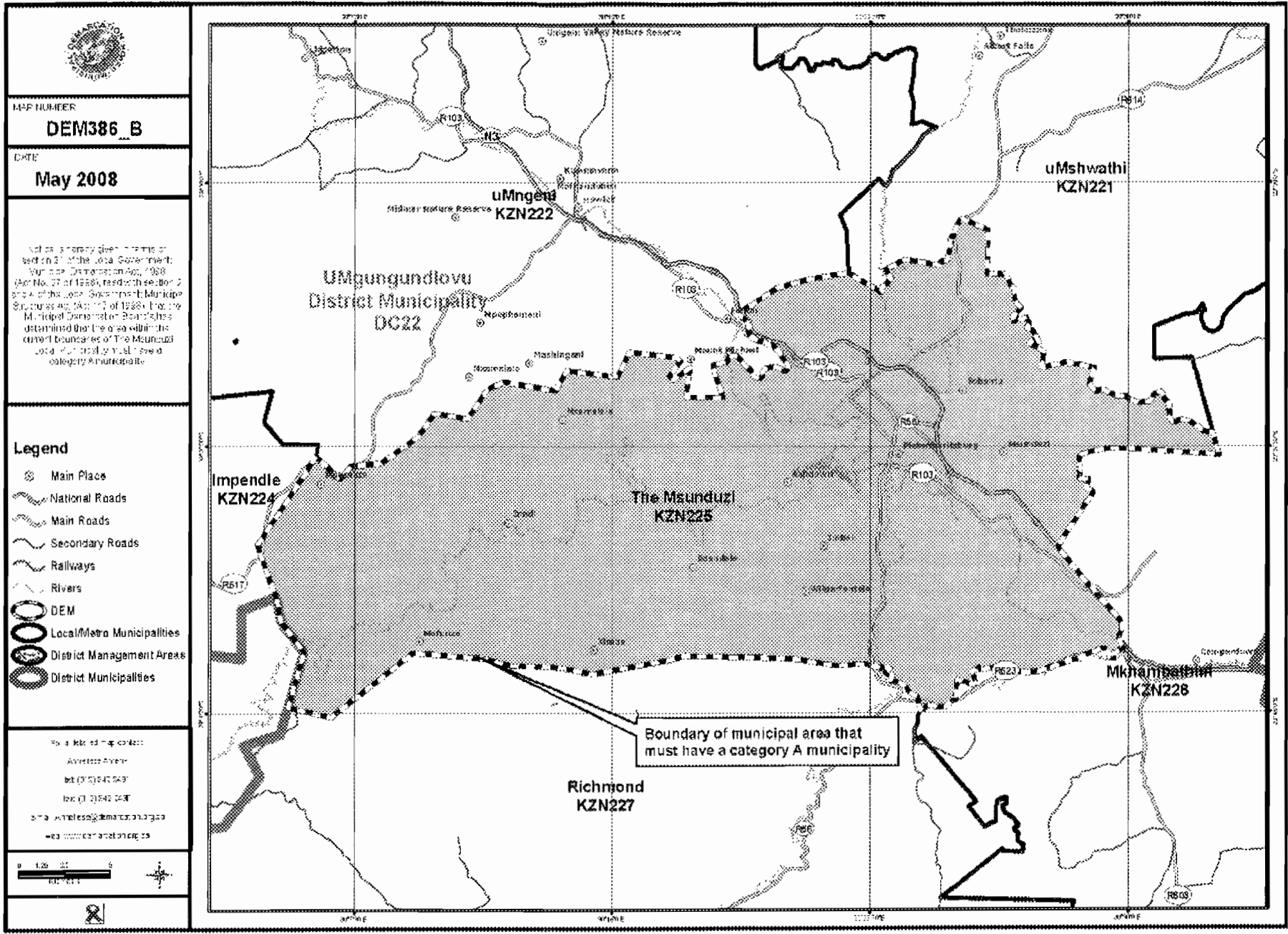
DATE
May 2008


1. The boundaries shown on this map are the boundaries of the Local/Metro Municipalities and District Municipalities of KwaZulu-Natal as defined in the Local Government Act, 1998 (Act No. 107 of 1998) and the Local Government Amendment Act, 2002 (Act No. 25 of 2002). The boundaries of the Local/Metro Municipalities and District Municipalities shown on this map are the boundaries of the Local/Metro Municipalities and District Municipalities of KwaZulu-Natal as defined in the Local Government Act, 1998 (Act No. 107 of 1998) and the Local Government Amendment Act, 2002 (Act No. 25 of 2002).

- Legend**
- Main Place
 - National Roads
 - Main Roads
 - Secondary Roads
 - Railways
 - Rivers
 - DEM
 - Local/Metro Municipalities
 - District Management Areas
 - District Municipalities

Scale 1:500 000
 0 10 20 30 40 50 60 70 80 90 100
 Kilometres






MAP NUMBER DEM386_B
DATE May 2008
<p>Not a statutory document in terms of section 21 of the Local Government Municipal Demarcation Act, 1998 (Act No. 27 of 1998), read together with section 2 of the Local Government Municipal Structures Act, No. 11 of 1998. For the Municipal Demarcation Board's findings determined that the area within the dotted boundaries of The Msunduzi Local Municipality must have a category A municipality.</p>
Legend <ul style="list-style-type: none"> Main Place National Roads Main Roads Secondary Roads Railways Rivers DEM Local/Metro Municipalities District Management Areas District Municipalities
<p>For a detailed map contact: Address: E-mail: info@kzn.gov.za Tel: (033) 442 5697 Fax: (033) 442 5698 e-mail: wholesale@kzn.gov.za web: www.kzn.gov.za</p>
<p>0 1 2 3 4 5 Kilometers</p> 