



KWAZULU-NATAL PROVINCE
KWAZULU-NATAL PROVINSIE
ISIFUNDAZWE SAKWAZULU-NATALI

Provincial Gazette • Provinsiale Koerant • Igazethi Yesifundazwe

GAZETTE EXTRAORDINARY—BUITENGEWONE KOERANT—IGAZETHI EYISIPESHELI

(Registered at the post office as a newspaper) • (As 'n nuusblad by die poskantoor geregistreer)
(Irejistiwee njengephephandaba eposihhovisi)

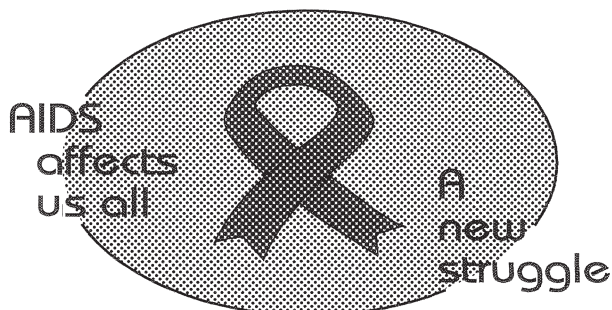
PIETERMARITZBURG

Vol. 9

27 JULY 2015
27 JULIE 2015
27 KUNTULIKAZI 2015

No. 1420

We all have the power to prevent AIDS



**AIDS
HELPLINE**

0800 012 322

DEPARTMENT OF HEALTH

Prevention is the cure

N.B. The Government Printing Works will not be held responsible for the quality of "Hard Copies" or "Electronic Files" submitted for publication purposes

ISSN 1994-4558



9 771994 455008

01420



IMPORTANT

Information

from Government Printing Works

Dear Valued Customers,

Government Printing Works has implemented rules for completing and submitting the electronic Adobe Forms when you, the customer, submits your notice request.

Please take note of these guidelines when completing your form.



GPW Business Rules

1. No hand written notices will be accepted for processing, this includes Adobe forms which have been completed by hand.
2. Notices can only be submitted in Adobe electronic form format to the email submission address submit.egazette@gpw.gov.za. This means that any notice submissions not on an Adobe electronic form that are submitted to this mailbox will be **rejected**. National or Provincial gazette notices, where the Z95 or Z95Prov must be an Adobe form but the notice content (body) will be an attachment.
3. Notices brought into GPW by "walk-in" customers on electronic media can only be submitted in Adobe electronic form format. This means that any notice submissions not on an Adobe electronic form that are submitted by the customer on electronic media will be **rejected**. National or Provincial gazette notices, where the Z95 or Z95Prov must be an Adobe form but the notice content (body) will be an attachment.
4. All customers who walk in to GPW that wish to submit a notice that is not on an electronic Adobe form will be routed to the Contact Centre where the customer will be taken through the completion of the form by a GPW representative. Where a customer walks into GPW with a stack of hard copy notices delivered by a messenger on behalf of a newspaper the messenger must be referred back to the sender as the submission does not adhere to the submission rules.
5. All notice submissions that do not comply with point 2 will be charged full price for the notice submission.
6. The current cut-off of all Gazette's remains unchanged for all channels. (Refer to the GPW website for submission deadlines – www.gpwonline.co.za)
7. Incorrectly completed forms and notices submitted in the wrong format will be rejected to the customer to be corrected and resubmitted. Assistance will be available through the Contact Centre should help be required when completing the forms. (012-748 6200 or email info.egazette@gpw.gov.za)
8. All re-submissions by customers will be subject to the above cut-off times.
9. All submissions and re-submissions that miss the cut-off will be rejected to the customer to be submitted with a new publication date.
10. Information on forms will be taken as the primary source of the notice to be published. Any instructions that are on the email body or covering letter that contradicts the notice form content will be ignored.

You are therefore advised that effective from **Monday, 18 May 2015** should you not comply with our new rules of engagement, all notice requests will be rejected by our new system.

Furthermore, the fax number **012- 748 6030** will also be **discontinued** from this date and customers will only be able to submit notice requests through the email address submit.egazette@gpw.gov.za.

DISCLAIMER:

Government Printing Works reserves the right to apply the 25% discount to all Legal and Liquor notices that comply with the business rules for notice submissions for publication in gazettes.

National, Provincial, Road Carrier Permits and Tender notices will pay the price as published in the Government Gazettes.

For any information, please contact the eGazette Contact Centre on 012-748 6200 or email info.egazette@gpw.gov.za

Table of Contents

<i>No.</i>		<i>Gazette No.</i>	<i>Page No.</i>
PROVINCIAL NOTICES • PROVINSIALE KENNISGEWINGS			
64	Local Government: Municipal Structures Act (117/1998): Nqutu Local Municipality: KZN242.....	1420	4
64	Wet Op Plaaslike Regering: Munisipale Strukture (117/1998): Munisipale Afbakeningsraad: Afbakening van munisipale wyke: Nqutu Local Municipality	1420	5

PROVINCIAL NOTICES • PROVINSIALE KENNISGEWINGS

PROVINCIAL NOTICE 64 OF 2015**MUNICIPAL DEMARCATION BOARD : DELIMITATION OF
MUNICIPAL WARDS IN TERMS OF THE LOCAL
GOVERNMENT : MUNICIPAL STRUCTURES ACT, 1998.****Nqutu Local Municipality
KZN242**

In terms of Item 5 (1) of Schedule 1 to the Local Government: Municipal Structures Act, 1998 (Act No. 117 of 1998) (the Act) the Municipal Demarcation Board hereby publishes its delimitation of wards for the above-mentioned municipality. Particulars of the delimitation are listed in the Schedule.

In terms of Item 5 (2) of Schedule 1 to the Act, any person aggrieved by the delimitation may, within 14 days of publication of this notice, submit objections in writing to:

The Municipal Demarcation Board
Private Bag X123
Centurion
0046

Fax: 086 5248643
Email: wards@demarcation.org.za

The attached form MDB 5 must please be used to object. The form is also available on www.demarcation.org.za

**MS JANE THUPANA
CHAIRPERSON: MUNICIPAL DEMARCATION BOARD****SCHEDULE**

In terms of section 18(3) of the Local Government: Municipal Structures Act, 1998 (Act 117 of 1998), the MEC responsible for local government has determined that the municipal council consists of 33 councillors.

After having consulted the Independent Electoral Commission, The Municipal Demarcation Board has delimited the municipality into 17 wards in terms of Schedule 1 of the Act.

The number of registered voters in each ward does not vary by more than fifteen percent from the norm. The norm was determined by dividing the total number of voters on the municipal segment of the national common voters roll, namely 71144 voters on 5 March 2014, by the number of wards in the municipality.

An overview map of the boundary of the municipality, with the boundaries of the wards within the municipality, and a map of each ward are attached. In case of a discrepancy between the map and this schedule, the map will prevail. The ward numbers, the voting districts and voting stations in each ward, and the number of voters are as follows:

PROVINSIALE KENNISGEWING 64 VAN 2015**MUNISIPALE AFBAKENINGSRAAD :
AFBAKENING VAN MUNISIPALE WYKE INGEVOLGE DIE WET OP
PLAASLIKE REGERING: MUNISIPALE STRUKTURE, 1998****Nqutu Local Municipality****KZN242**

Ingevolge Item 5(1) van Bylae 1 van die Wet op Plaaslike Regering: Munisipale Strukture, 1998 (Wet No. 117 van 1998) (die Wet) publiseer die Munisipale Afbakeningsraad hiermee sy afbakening van wyke vir die bogenaaamde munisipaliteit. Besonderhede van die afbakening is vervat in die Bylae.

Ingevolge item 5(2) van Bylae 1 van die Wet, kan enige persoon wat gegrief is deur 'n afbakening binne 14 dae vanaf publikasie van hierdie kennisgewing skriftelike besware voorlê aan:

Die Munisipale Afbakeningsraad
Privaatsak X123
Centurion
0046

Faks: 086 5248643
E-pos: wards@demarcation.org.za

Die aangehegte vorm MDB5 moet asseblief gebruik word om beswaar aan te teken. Die vorm is ook beskikbaar op www.demarcation.org.za

**MS JANE THUPANA
VOORSITTER : MUNISIPALE AFBAKENINGSRAAD****BYLAE**

Ingevolge artikel 18(3) van die Wet op Plaaslike Regering: Munisipale Strukture, 1998 (Wet 117 van 1998) het die LUR vir plaaslike regering bepaal dat die munisipale raad bestaan uit 33 raadslede.

Na oorlegpleging met die Onafhanklike Verkiesingskommissie het die Munisipale Afbakeningsraad die munisipaliteit in 17 wyke afgebaken ingevolge Bylae 1 van die Wet.

Die getal geregistreerde kiesers in elke wyk, wyk nie meer as vyftien persent van die norm af nie. Die norm is bepaal deur die getal geregistreerde kiesers op die munisipale segment van die nasionale gemeenskaplike kieserslys, naamlik 71144 kiesers op 5 Maart 2014, deur die getal wyke in die munisipaliteit te deel.

'n Oorsigkaart van die munisipale grens met die grense van die wyke binne die munisipale grens, en 'n kaart van elke wyk, is aangeheg. Ingeval van 'n verskil tussen 'n kaart en hierdie bylae, sal die kaart geld.

Die wyknommers, die stemdistrikte en stemlokale in elke wyk, en die getal kiesers is as volg:

Ward 1 comprises of a total of 4513 registered voters.
Wyk 1 bestaan uit 'n totaal van 4513 geregistreerde kiesers.
 MIN VOTERS/KIESER 3557 NORM 4185 MAX VOTERS/KIESER 4813

VOTING DISTRICT No. STEMDISTRIK No.	VOTING STATION NAME STEMLOKAAL NAAM	NUMBER OF VOTERS GETAL KIESERS	SPLIT VD VERDEELDE SD
43621017	NTABASIBAHLE PRIMARY SCHOOL	561	
43624885	GWIIJA SCHOOL	659	
43620869	MATSHANA PRIMARY SCHOOL	363	
43620858	KWANGQULU PRIMARY SCHOOL	884	
43621006	VULINDLELA TRIBAL COURT	675	
43621073	MANGENI SCHOOL	632	
43621084	HLALELE COMBINED PRIMARY SCHOOL	739	

Ward 2 comprises of a total of 4523 registered voters.
Wyk 2 bestaan uit 'n totaal van 4523 geregistreerde kiesers.
 MIN VOTERS/KIESER 3557 NORM 4185 MAX VOTERS/KIESER 4813

VOTING DISTRICT No. STEMDISTRIK No.	VOTING STATION NAME STEMLOKAAL NAAM	NUMBER OF VOTERS GETAL KIESERS	SPLIT VD VERDEELDE SD
43622872	SIBIYA MILLS	358	
43625752	KLWAYISI SCHOOL	224	
43625392	SHESHANI PRIMARY SCHOOL	193	
43622883	MAGOGO SCHOOL	540	
43622692	NKUNYANA SCHOOL	595	
43625448	REFORMED CHURCH	234	
43621062	MBOKODWEBOMVU TRIBAL AUTHORITY	635	
43621051	ZAMOKWAKHE SCHOOL	367	
43621141	MFEKA PRIMARY SCHOOL	541	
43625213	KWANDWALANE SCHOOL PRIMARY	364	
43621185	ISILUTSHANA PRIMARY SCHOOL	472	

Ward 3 comprises of a total of 3809 registered voters.
Wyk 3 bestaan uit 'n totaal van 3809 geregistreerde kiesers.
 MIN VOTERS/KIESER 3557 NORM 4185 MAX VOTERS/KIESER 4813

VOTING DISTRICT No. STEMDISTRIK No.	VOTING STATION NAME STEMLOKAAL NAAM	NUMBER OF VOTERS GETAL KIESERS	SPLIT VD VERDEELDE SD
43621231	ZONDI TRIBAL COURT	464	
43501070	SICELIMFUNDO COMBINED PRIMARY SCHOOL	1085	

43624920	NHLENGILE SCHOOL	529
43503588	KLWANA SCHOOL	505
43503577	SHEKELELA SCHOOL	340
43504196	MAGOGO STORE	244
43625415	FAHLAZA SCHOOL	301
43621242	NOMDUMO HIGH SCHOOL	341

Ward 4	comprises of a total of 3990	registered voters.
Wyk 4	bestaan uit 'n totaal van 3990	geregistreerde kiesers.
MIN VOTERS/KIESER 3557	NORM 4185	MAX VOTERS/KIESER 4813

VOTING DISTRICT No. STEMDISTRIK No.	VOTING STATION NAME STEMLOKAAL NAAM	NUMBER OF VOTERS GETAL KIESERS	SPLIT VD VERDEELDE SD
43621523	NHLABAMKHOSI SCHOOL	982	
43621163	JAMA TRIBAL COURT	1108	
43500080	MACHITSHANA PRIMARY SCHOOL	905	
43625651	BATHWA SCHOOL	391	
43501069	NHLOPHENI SCHOOL	279	
43624784	ZWELISHA PRIMARY SCHOOL	325	

Ward 5	comprises of a total of 3567	registered voters.
Wyk 5	bestaan uit 'n totaal van 3567	geregistreerde kiesers.
MIN VOTERS/KIESER 3557	NORM 4185	MAX VOTERS/KIESER 4813

VOTING DISTRICT No. STEMDISTRIK No.	VOTING STATION NAME STEMLOKAAL NAAM	NUMBER OF VOTERS GETAL KIESERS	SPLIT VD VERDEELDE SD
43622850	NYAKAZA SCHOOL	835	
43625279	EKUKHANYENI SCHOOL	526	
43625921	BUHLEBUYEZA PRIMARY SCHOOL	225	
43621309	HWANQANA INTERMEDIATE COMBINED SCHOOL	502	
43625471	NOMASHAKA SCHOOL	270	
43624795	SIYATHUTHUKA SEWING ROOM	547	
43621174	HLINZEKA HIGHER PRIMARY SCHOOL	662	

Ward 6	comprises of a total of 4097	registered voters.
Wyk 6	bestaan uit 'n totaal van 4097	geregistreerde kiesers.
MIN VOTERS/KIESER 3557	NORM 4185	MAX VOTERS/KIESER 4813

VOTING DISTRICT No. STEMDISTRIK No.	VOTING STATION NAME STEMLOKAAL NAAM	NUMBER OF VOTERS GETAL KIESERS	SPLIT VD VERDEELDE SD
43624919	LANGAZELA HIGH SCHOOL	1546	

43621512	SIZAMILE TRIBAL COURT	910
43625730	BAMBUHLANGA CRECHE	315
43625268	SIYACATHULA SCHOOL	669
43621534	SIYABUSWA SCHOOL	657

Ward 7 comprises of a total of 3611 registered voters.
Wyk 7 bestaan uit 'n totaal van 3611 geregistreerde kiesers.

MIN VOTERS/KIESER 3557 NORM 4185 MAX VOTERS/KIESER 4813

VOTING DISTRICT No. STEMDISTRIK No.	VOTING STATION NAME STEMLOKAAL NAAM	NUMBER OF VOTERS GETAL KIESERS	SPLIT VD VERDEELDE SD
43621466	HLOMISA SCHOOL	563	
43625763	NSEKWINI CRECHE	205	
43621488	MADULADULA SCHOOL	916	
43625741	THUTHUKANI CRECHE	165	
43621422	MHLUNGWANA HALL	811	
43621501	MPHONDI LOWER PRIMARY SCHOOL	512	
43625617	MANDLENYOSI SCHOOL	439	

Ward 8 comprises of a total of 3900 registered voters.
Wyk 8 bestaan uit 'n totaal van 3900 geregistreerde kiesers.

MIN VOTERS/KIESER 3557 NORM 4185 MAX VOTERS/KIESER 4813

VOTING DISTRICT No. STEMDISTRIK No.	VOTING STATION NAME STEMLOKAAL NAAM	NUMBER OF VOTERS GETAL KIESERS	SPLIT VD VERDEELDE SD
43626056	CASSINO PRIMARY SCHOOL	254	
43621376	MBEWUNYE SCHOOL	550	
43621365	VEZINHLANHLA PRIMARY SCHOOL	839	
43621332	MAHOLELA COMBINED PRIMARY SCHOOL	220	
43621310	PATSOANA SCHOOL	669	
43626045	LESEDI CRECHE	251	
43621219	MABULULWANA COMBINED PRIMARY SCHOOL	395	
43621499	KHIPHINKUNZI TRIBAL COURT	722	

Ward 9 comprises of a total of 4363 registered voters.
Wyk 9 bestaan uit 'n totaal van 4363 geregistreerde kiesers.

MIN VOTERS/KIESER 3557 NORM 4185 MAX VOTERS/KIESER 4813

VOTING DISTRICT No. STEMDISTRIK No.	VOTING STATION NAME STEMLOKAAL NAAM	NUMBER OF VOTERS GETAL KIESERS	SPLIT VD VERDEELDE SD
43621444	PHAKATHWAYO HIGH SCHOOL	689	

43625460	CEBELIHLE SCHOOL	375
43622579	NTANYANDLOVU SCHOOL	1229
43621264	GADELENI HIGH SCHOOL	486
43621253	BUHLEBAMANGWE PRIMARY SCHOOL	550
43625404	DUTCH REFORMED CHURCH	575
43625235	MANGWEBUTHANANI TRIBAL COURT	459

Ward 10	comprises of a total of 4618	registered voters.
Wyk 10	bestaan uit 'n totaal van 4618	geregistreeerde kiesers.
MIN VOTERS/KIESER	3557	NORM 4185
		MAX VOTERS/KIESER 4813

VOTING DISTRICT No. STEMDISTRIK No.	VOTING STATION NAME STEMLOKAAL NAAM	NUMBER OF VOTERS GETAL KIESERS	SPLIT VD VERDEELDE SD
43621196	MASOTSHENI PRIMARY SCHOOL	654	
43621118	BUZUBONA SCHOOL	1084	
43625437	MATHUTSHANA PRIMARY SCHOOL	312	
43621107	NHLOYA PRIMARY SCHOOL	344	
43621433	NGEDLA HIGHER PRIMARY SCHOOL	685	
43625202	MHLAZANE SCHOOL	799	
43621275	NCEPHENI HIGHER PRIMARY SCHOOL	740	

Ward 11	comprises of a total of 4366	registered voters.
Wyk 11	bestaan uit 'n totaal van 4366	geregistreeerde kiesers.
MIN VOTERS/KIESER	3557	NORM 4185
		MAX VOTERS/KIESER 4813

VOTING DISTRICT No. STEMDISTRIK No.	VOTING STATION NAME STEMLOKAAL NAAM	NUMBER OF VOTERS GETAL KIESERS	SPLIT VD VERDEELDE SD
43621343	ETHEMBENI STORE	560	
43621400	THULASIZWE COMBINED PRIMARY SCHOOL	1475	
43625459	MEHLOKAZULU PRE-SCHOOL	590	
43625246	GOODSHEPERD CHURCH	744	
43622580	BATSHE SCHOOL	252	
43625066	VUKA STORE	745	

Ward 12	comprises of a total of 4605	registered voters.
Wyk 12	bestaan uit 'n totaal van 4605	geregistreeerde kiesers.
MIN VOTERS/KIESER	3557	NORM 4185
		MAX VOTERS/KIESER 4813

VOTING DISTRICT No. STEMDISTRIK No.	VOTING STATION NAME STEMLOKAAL NAAM	NUMBER OF VOTERS GETAL KIESERS	SPLIT VD VERDEELDE SD
43625628	DALALA SCHOOL	146	

43622524	JABAVU PRIMARY SCHOOL	753
43621398	PHUMLANI SCHOOL	635
43625190	PHILANI SCHOOL	564
43621321	SPRINGLAKE HIGH SCHOOL	1568
43621208	NCOME PRIMARY SCHOOL	939

Ward 13 comprises of a total of 4330 registered voters.
Wyk 13 bestaan uit 'n totaal van 4330 geregistreerde kiesers.

MIN VOTERS/KIESER 3557 NORM 4185 MAX VOTERS/KIESER 4813

VOTING DISTRICT No. STEMDISTRIK No.	VOTING STATION NAME STEMLOKAAL NAAM	NUMBER OF VOTERS GETAL KIESERS	SPLIT VD VERDEELDE SD
43621477	ZICOLE SENIOR SECONDARY SCHOOL	1090	
43625178	MOLEFE TRIBAL COURT	498	
43621455	NHLALAKAHLE SECONDARY SCHOOL	755	
43621354	QEDUSIZI SENIOR PRIMARY SCHOOL	916	
43625639	QEDIPHIKA SCHOOL	567	
43625640	MAFIHLENG SCHOOL	504	

Ward 14 comprises of a total of 4708 registered voters.
Wyk 14 bestaan uit 'n totaal van 4708 geregistreerde kiesers.

MIN VOTERS/KIESER 3557 NORM 4185 MAX VOTERS/KIESER 4813

VOTING DISTRICT No. STEMDISTRIK No.	VOTING STATION NAME STEMLOKAAL NAAM	NUMBER OF VOTERS GETAL KIESERS	SPLIT VD VERDEELDE SD
43621387	LUVISI SCHOOL	1171	
43625257	MGAZI SCHOOL	1208	
43625189	ZION CHURCH	826	
43624908	MAGISTRATE COURT	1503	

Ward 15 comprises of a total of 4587 registered voters.
Wyk 15 bestaan uit 'n totaal van 4587 geregistreerde kiesers.

MIN VOTERS/KIESER 3557 NORM 4185 MAX VOTERS/KIESER 4813

VOTING DISTRICT No. STEMDISTRIK No.	VOTING STATION NAME STEMLOKAAL NAAM	NUMBER OF VOTERS GETAL KIESERS	SPLIT VD VERDEELDE SD
43626067	KWADOPHI SCHOOL	365	
43625785	SIYABONGA PRIMARY SCHOOL	199	
43621635	MKHONJANE COMBINED PRIMARY SCHOOL	266	
43621646	BUHLEBUZOVANA PRIMARY SCHOOL	1042	
43621624	NQUTU LUTHERAN COMBINED SCHOOL	702	

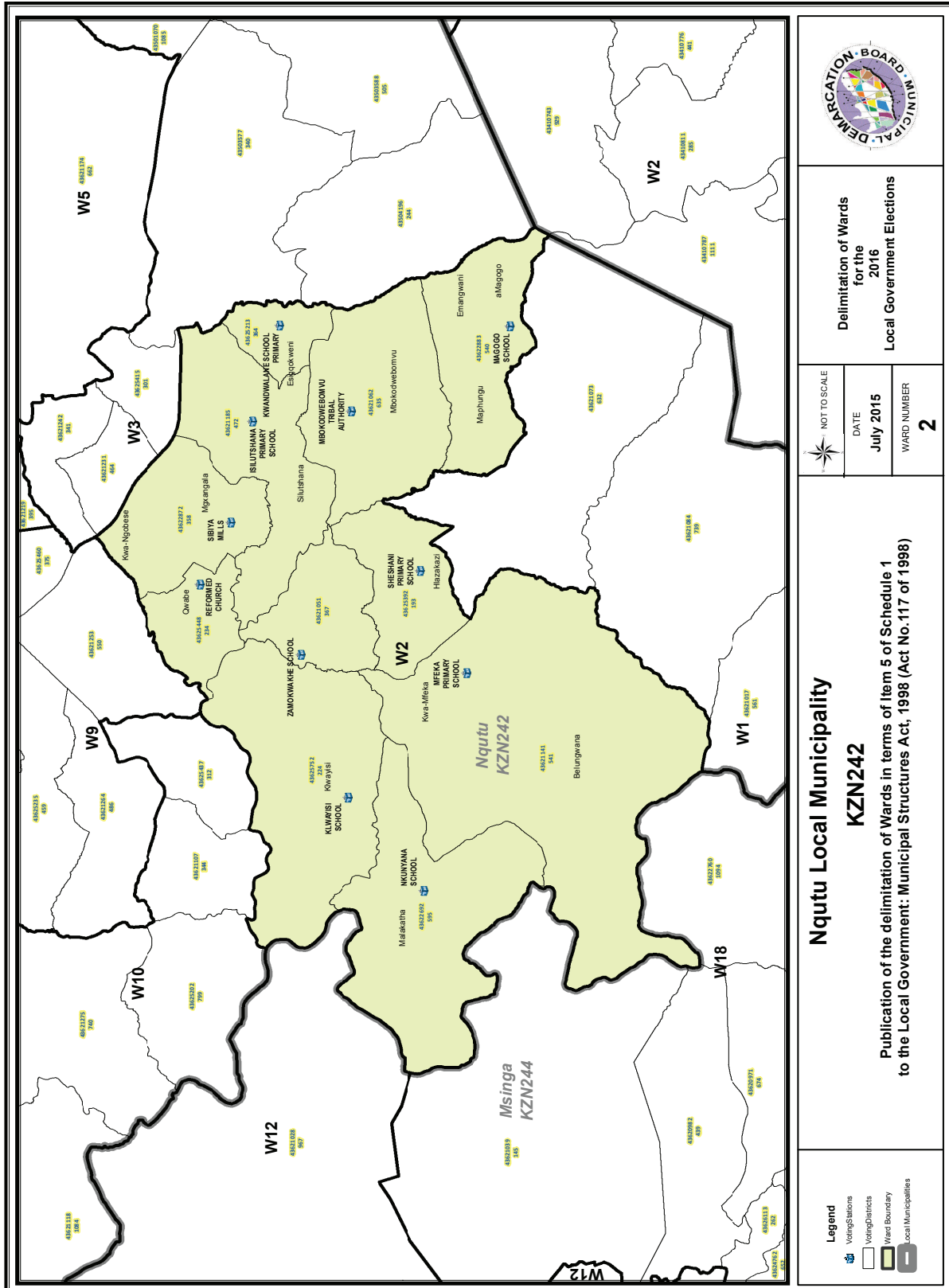
43625796	MUNYWANA PRIMARY SCHOOL	226
43622591	BLOODRIVER COMBINED PRIMARY SCHOOL	279
43625527	LINDOKUHLE SCHOOL	498
43621411	ISIBUKOSABASHA COMBINED PRIMARY SCHOOL	1010

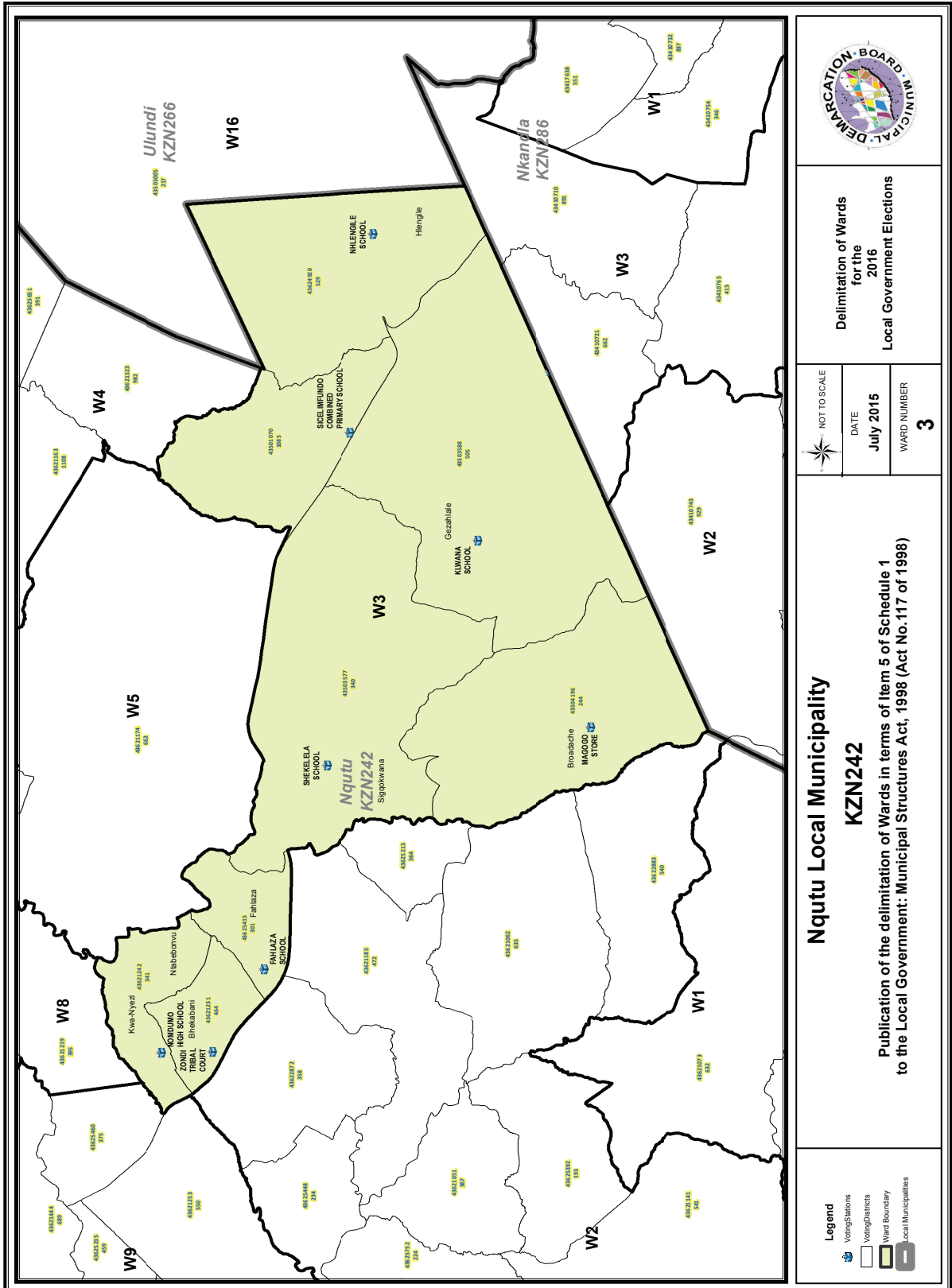
Ward 16 comprises of a total of 3694 registered voters.
Wyk 16 bestaan uit 'n totaal van 3694 geregistreerde kiesers.
 MIN VOTERS/KIESER 3557 NORM 4185 MAX VOTERS/KIESER 4813

VOTING DISTRICT No. STEMDISTRIK No.	VOTING STATION NAME STEMLOKAAL NAAM	NUMBER OF VOTERS GETAL KIESERS	SPLIT VD VERDEELDE SD
43625426	THEMBEKILE SCHOOL	576	
43621770	LENEHA TUMISA SENIOR SECONDARY SCHOOL	922	
43621567	CELUMUSA SENIOR SECONDARY SCHOOL	679	
43625774	SIYAMTHANDA PRIMARY SCHOOL	249	
43621613	MPHAZIMA PRIMARY SCHOOL	398	
43621602	NDATSHANA PRIMARY SCHOOL	560	
43626078	EKWANDENI REFORMED CHURCH	310	

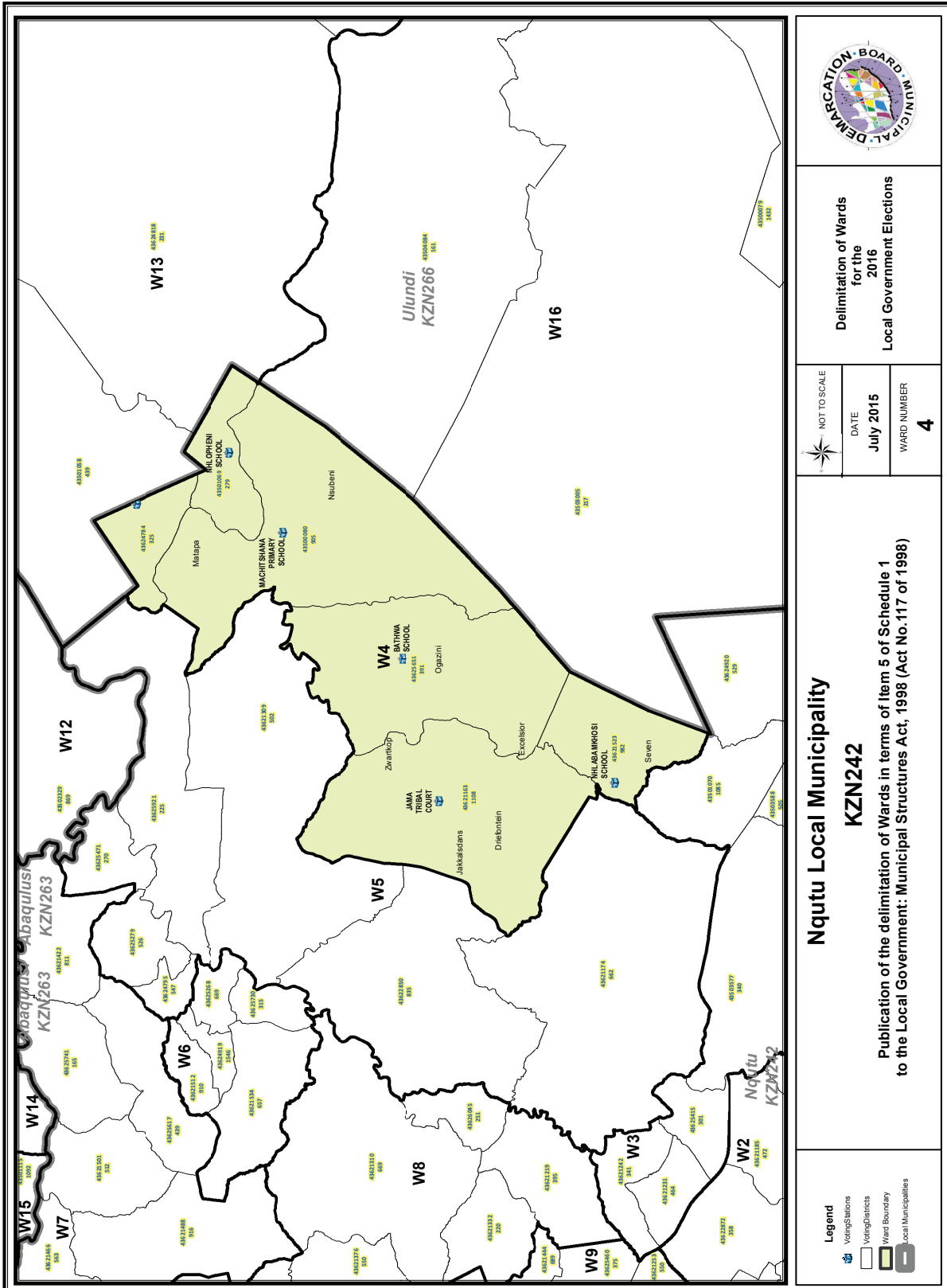
Ward 17 comprises of a total of 3863 registered voters.
Wyk 17 bestaan uit 'n totaal van 3863 geregistreerde kiesers.
 MIN VOTERS/KIESER 3557 NORM 4185 MAX VOTERS/KIESER 4813

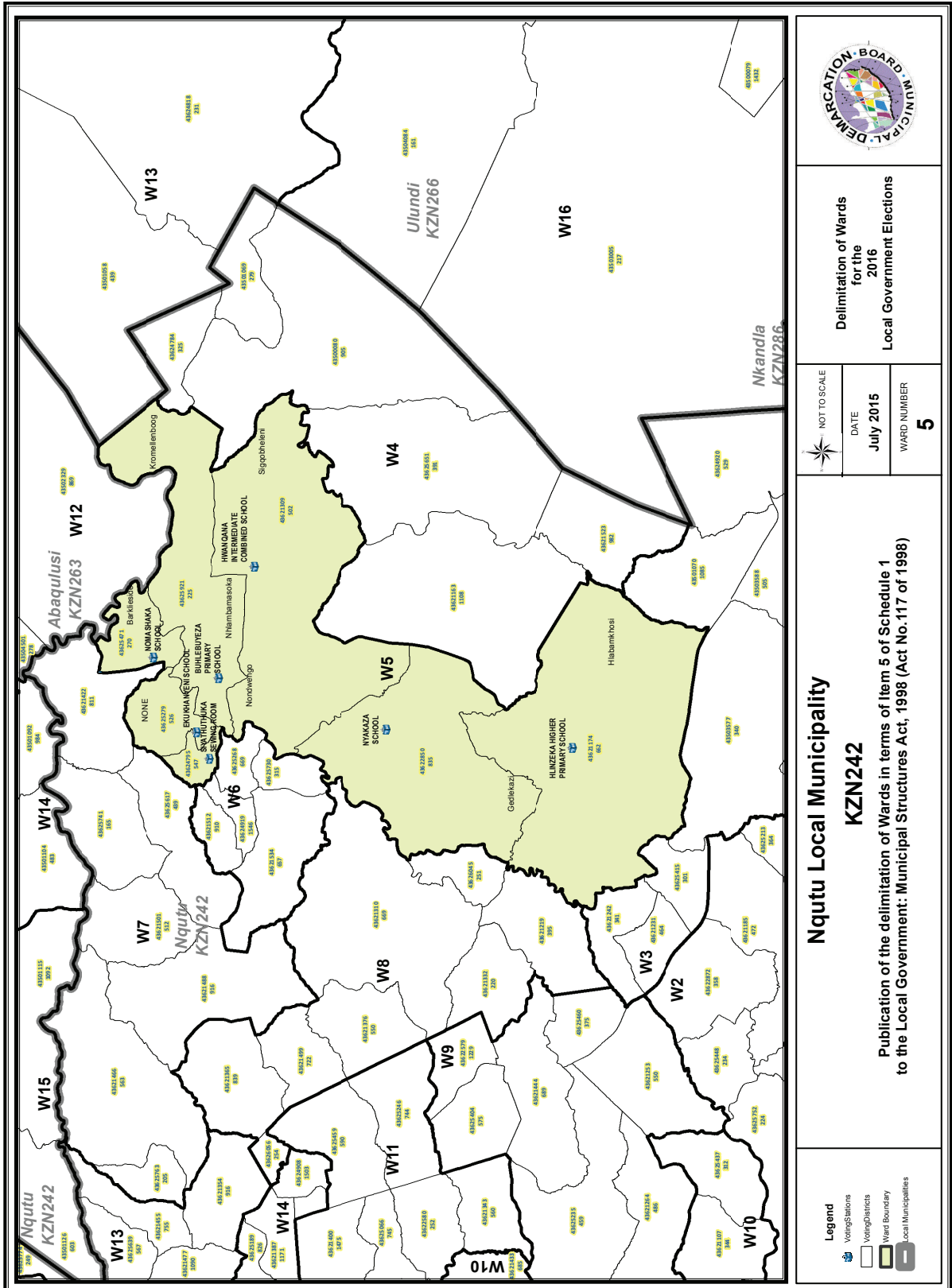
VOTING DISTRICT No. STEMDISTRIK No.	VOTING STATION NAME STEMLOKAAL NAAM	NUMBER OF VOTERS GETAL KIESERS	SPLIT VD VERDEELDE SD
43625516	TLOKOENG LOWER PRIMARY SCHOOL	351	
43625224	NKANDE SCHOOL	676	
43622603	NHLOKOMO SCHOOL	485	
43621590	NDLANGAMANDLA JUNIOR SECONDARY SCHOOL	1495	
43621589	NTSHANGASE PRIMARY SCHOOL	856	

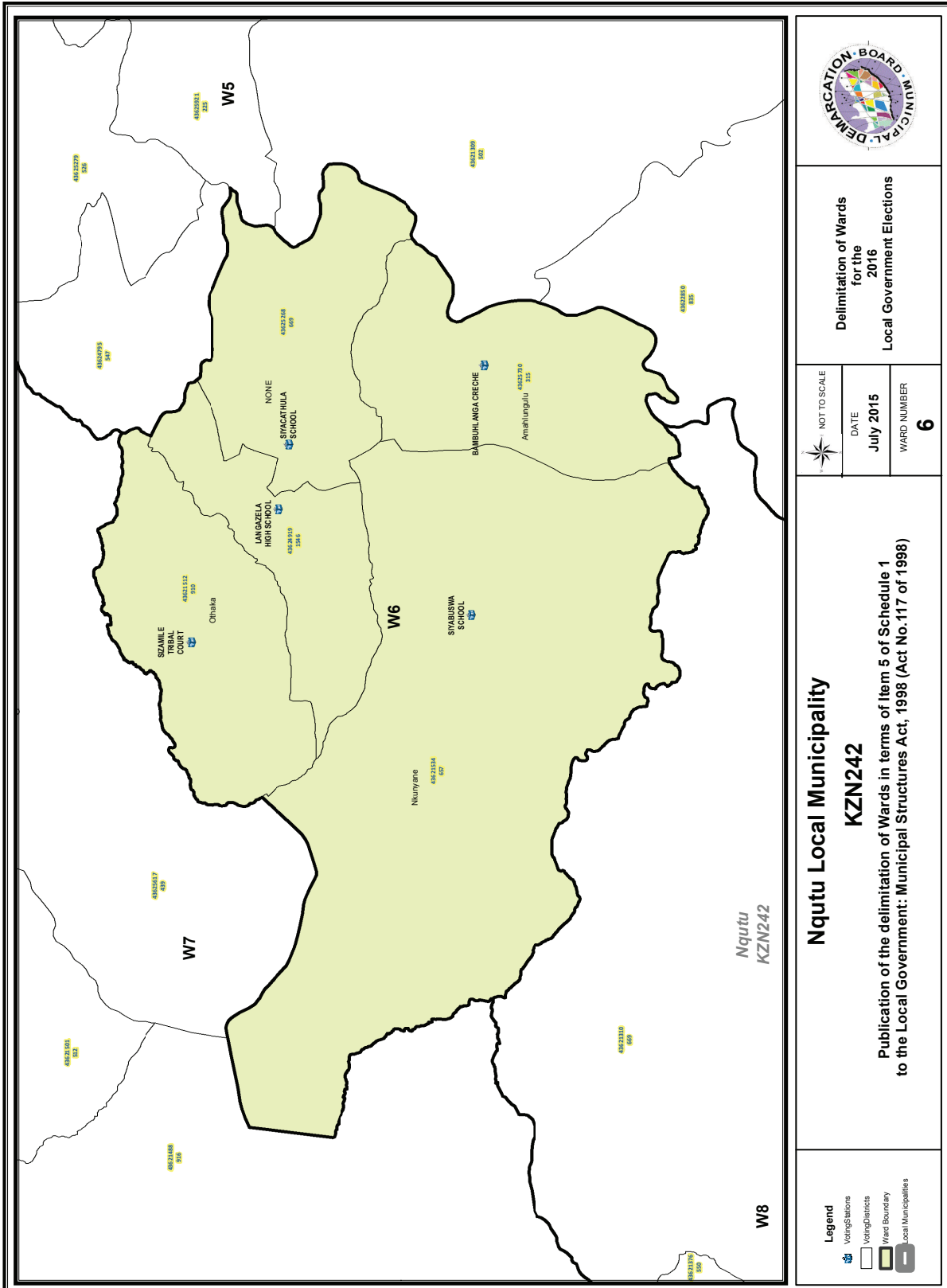




	Delimitation of Wards for the 2016 Local Government Elections	
	NOT TO SCALE DATE July 2015	WARD NUMBER 3
Nqutu Local Municipality KZN242 Publication of the delimitation of Wards in terms of Item 5 of Schedule 1 to the Local Government: Municipal Structures Act, 1998 (Act No.117 of 1998)		
Legend Voting Stations Voting Districts Ward Boundary Local Municipalities		







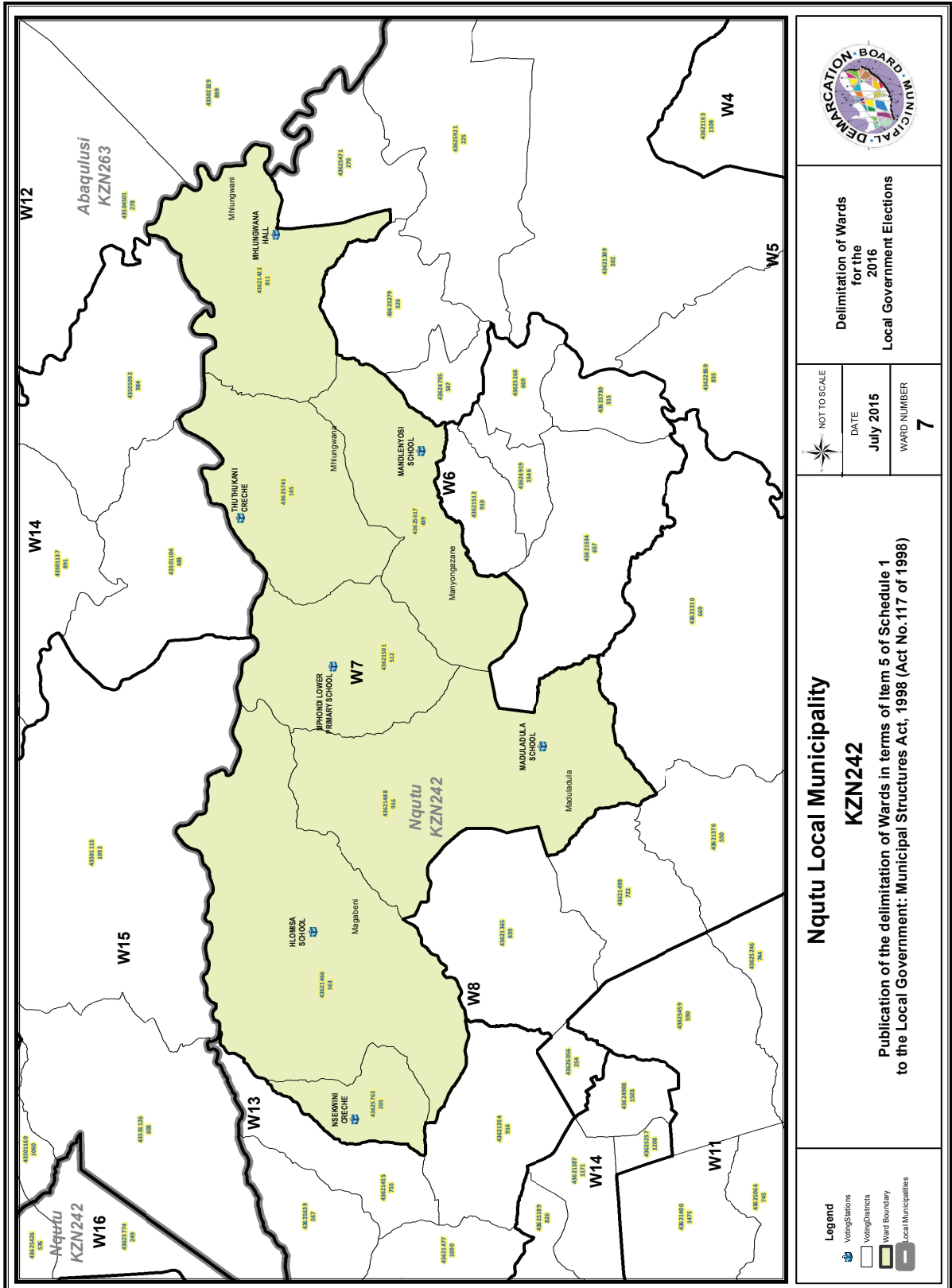
Delimitation of Wards
for the
2016
Local Government Elections

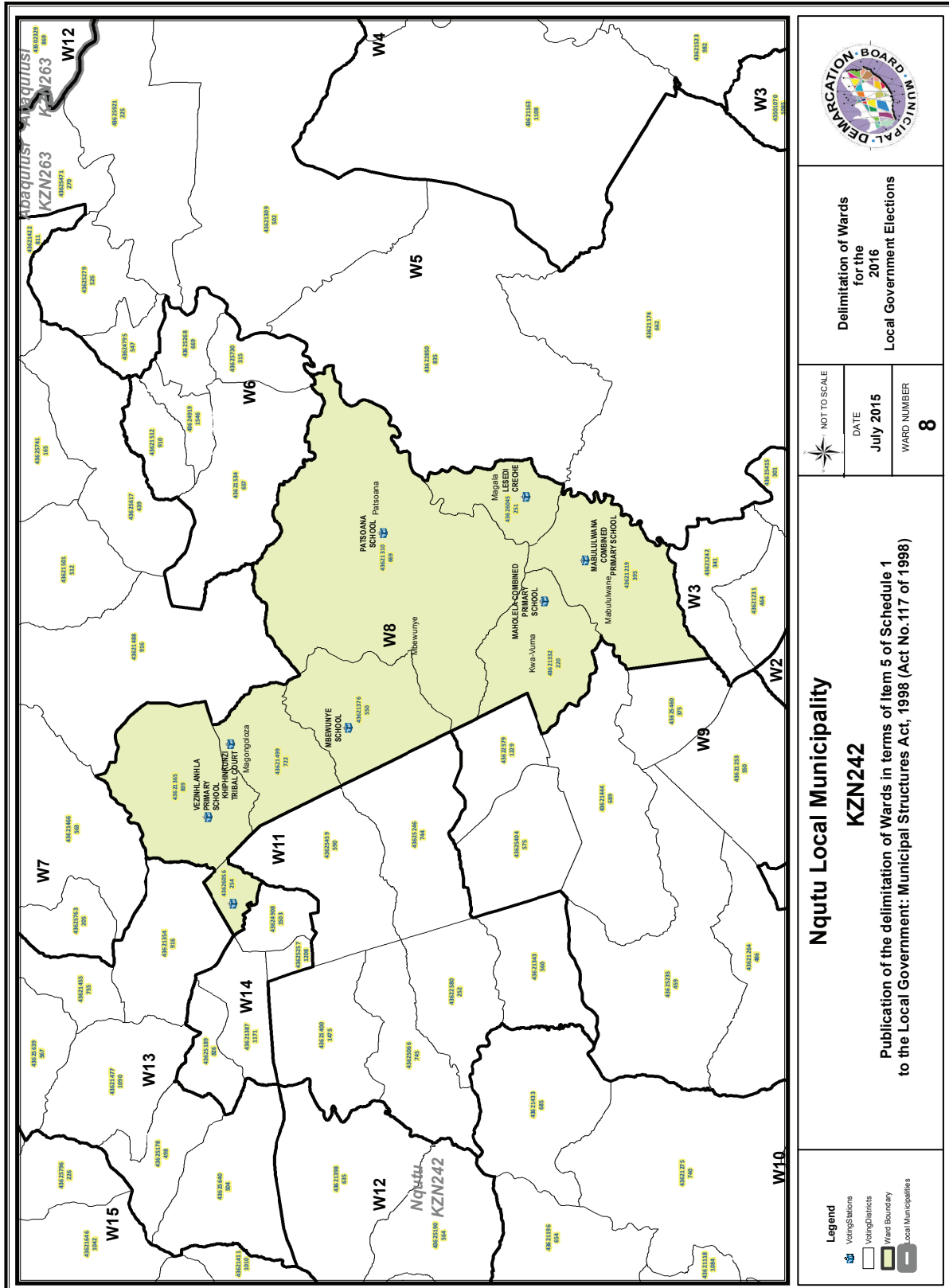
NOT TO SCALE
DATE
July 2015
WARD NUMBER
6

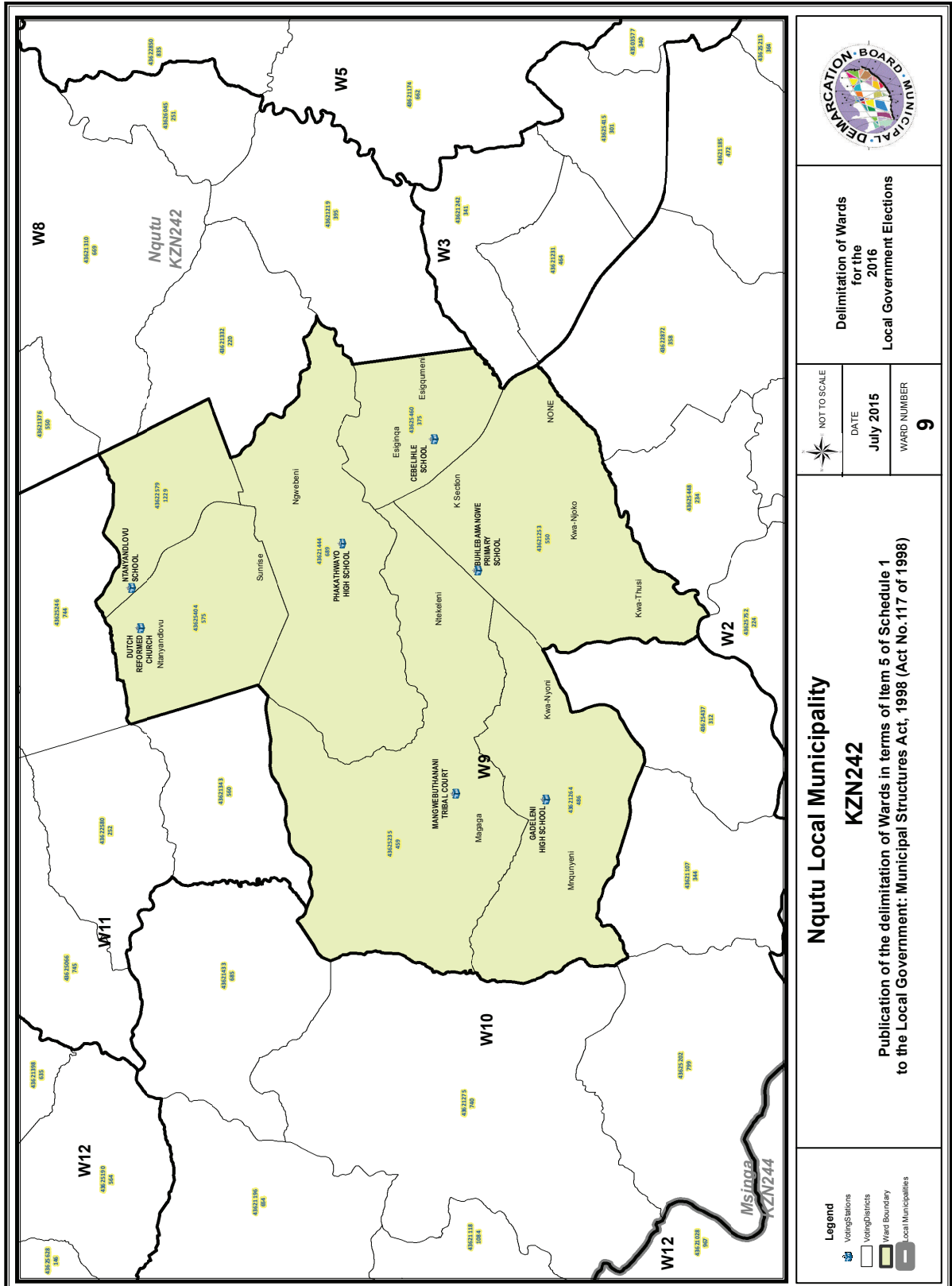
**Nqutu Local Municipality
KZN242**

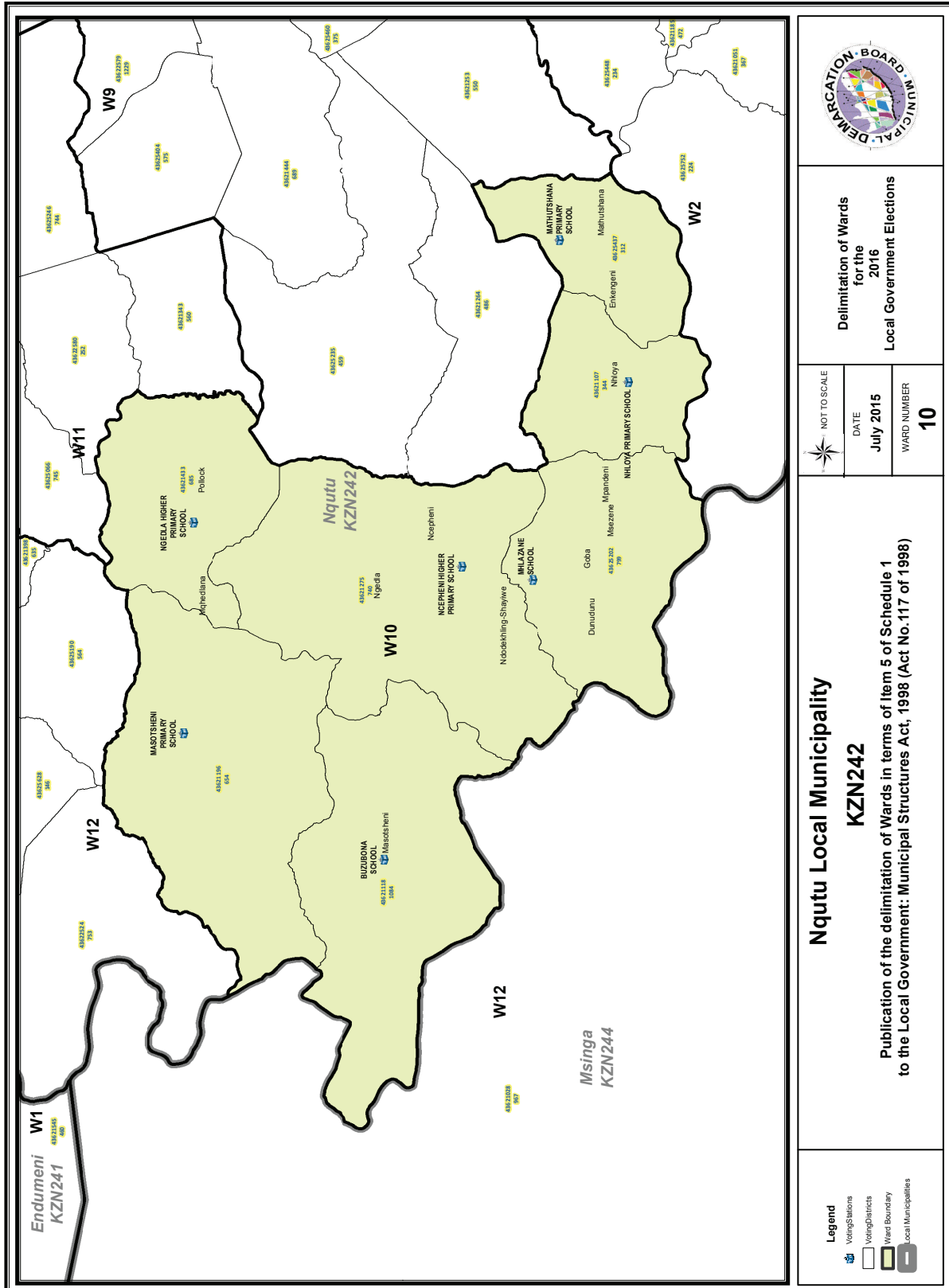
Publication of the delimitation of Wards in terms of Item 5 of Schedule 1
to the Local Government: Municipal Structures Act, 1998 (Act No.117 of 1998)

- Legend**
- Voting Stations
 - Voting Districts
 - Ward Boundary
 - Local Municipalities









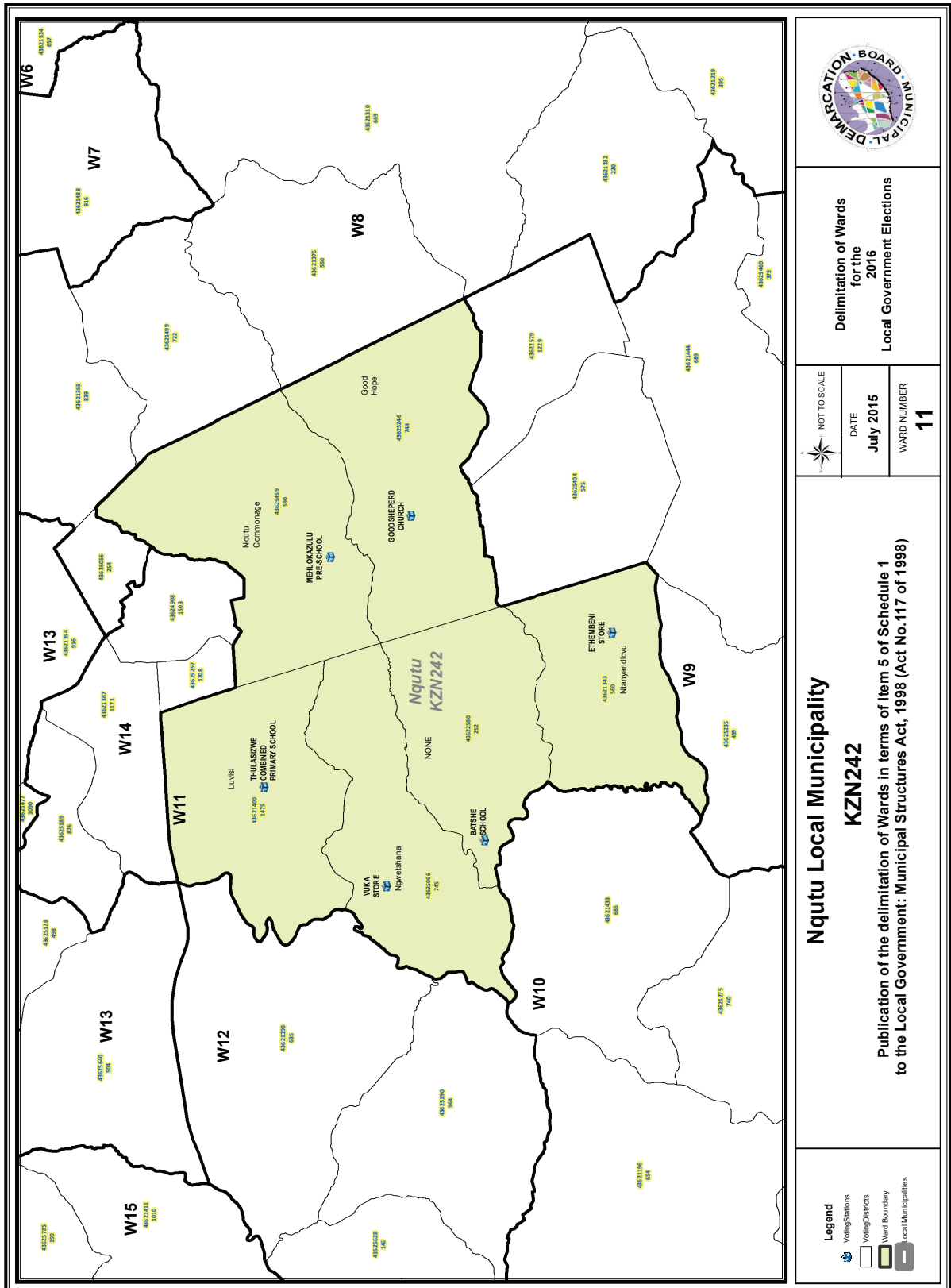
**Delimitation of Wards
for the
2016
Local Government Elections**

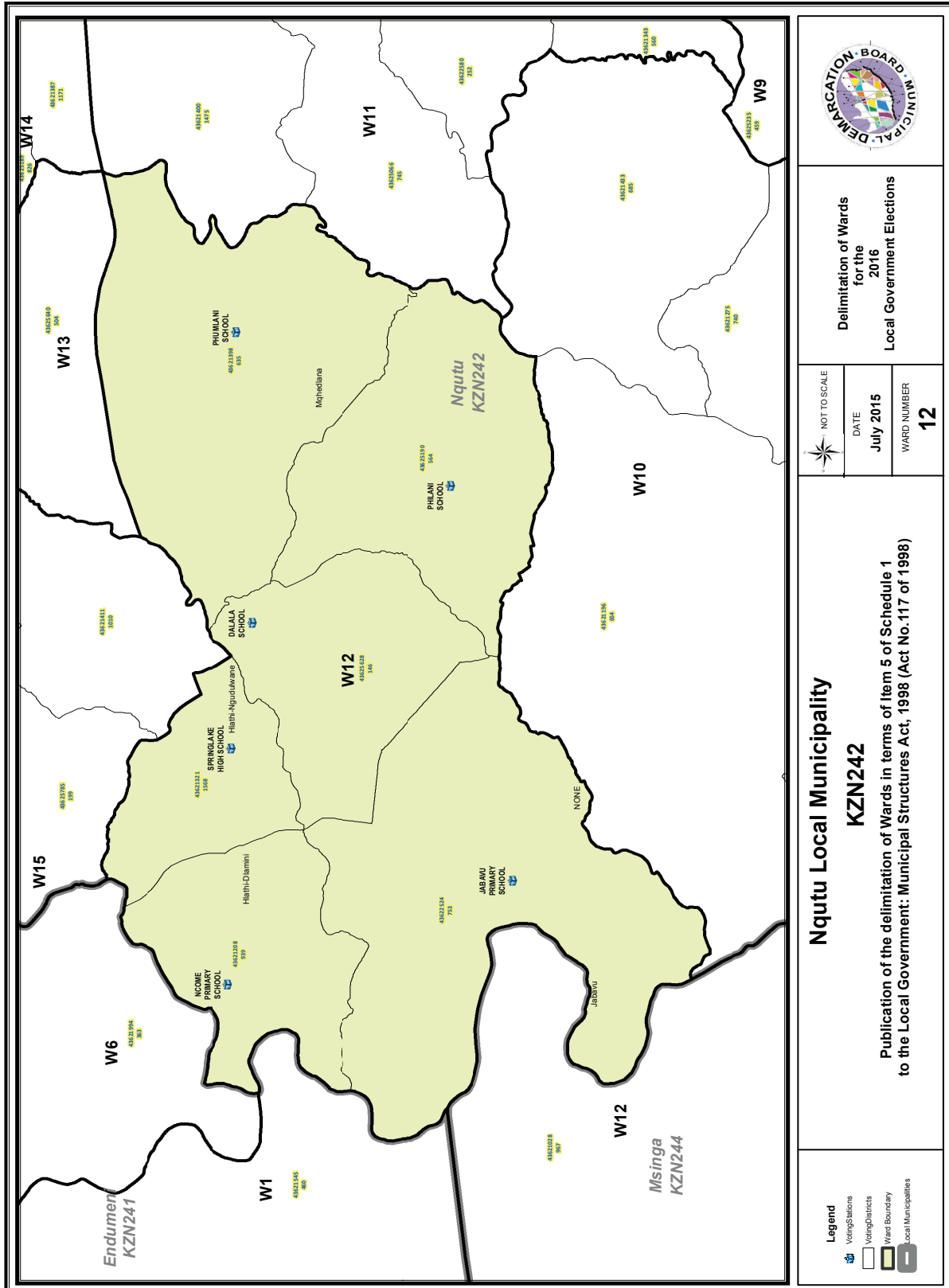
NOT TO SCALE
DATE
July 2015
WARD NUMBER
10

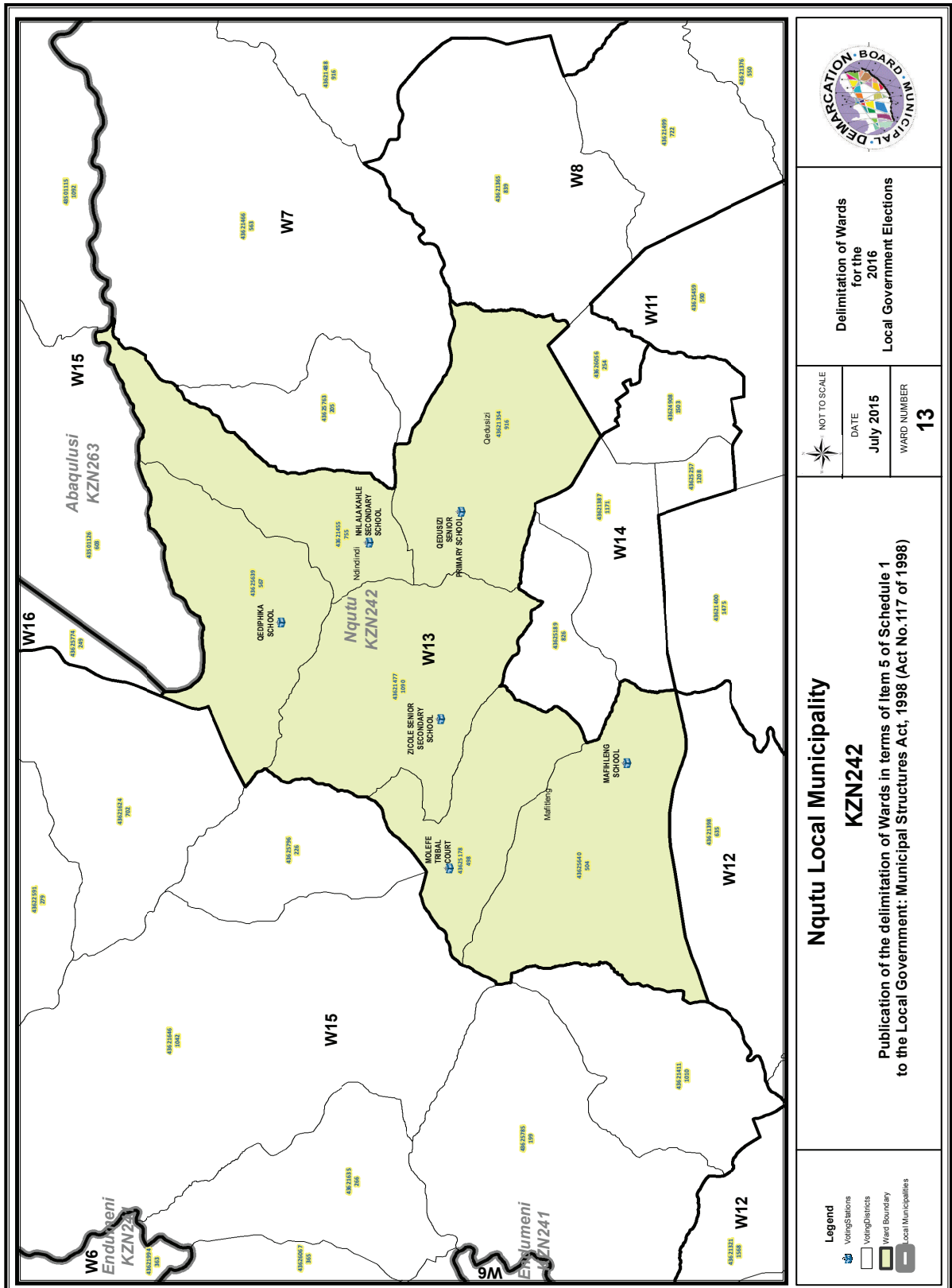
**Nqutu Local Municipality
KZN242**

**Publication of the delimitation of Wards in terms of Item 5 of Schedule 1
to the Local Government: Municipal Structures Act, 1998 (Act No.117 of 1998)**

- Legend**
- Voting Stations
 - Voting Districts
 - Ward Boundary
 - Local Municipalities









**Delimitation of Wards
for the
2016
Local Government Elections**

NOT TO SCALE



DATE
July 2015

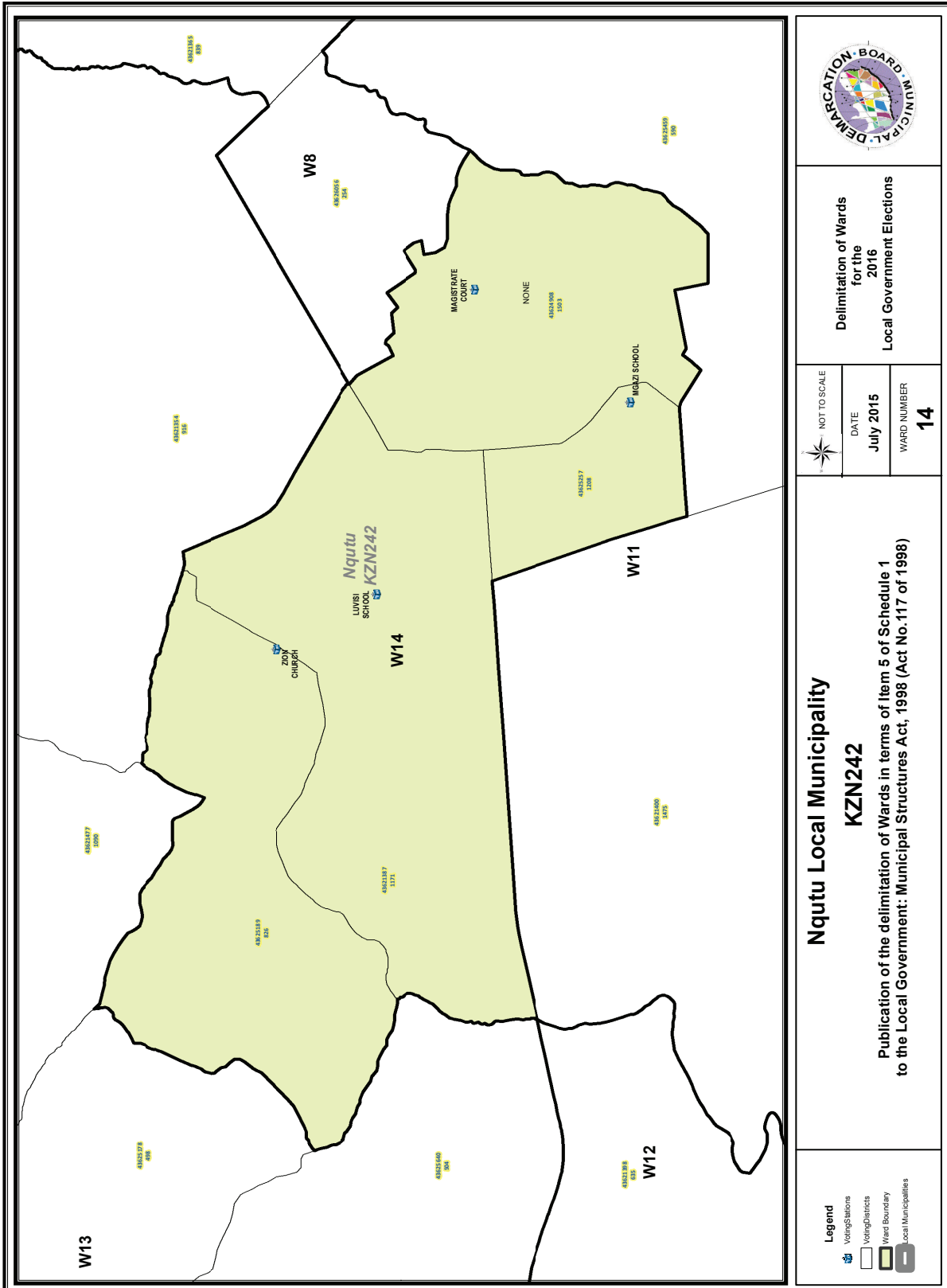
WARD NUMBER
13

**Nqutu Local Municipality
KZN242**

Publication of the delimitation of Wards in terms of Item 5 of Schedule 1
to the Local Government: Municipal Structures Act, 1998 (Act No.117 of 1998)

Legend

-  Voting Stations
-  Voting Districts
-  Ward Boundary
-  Local Municipalities

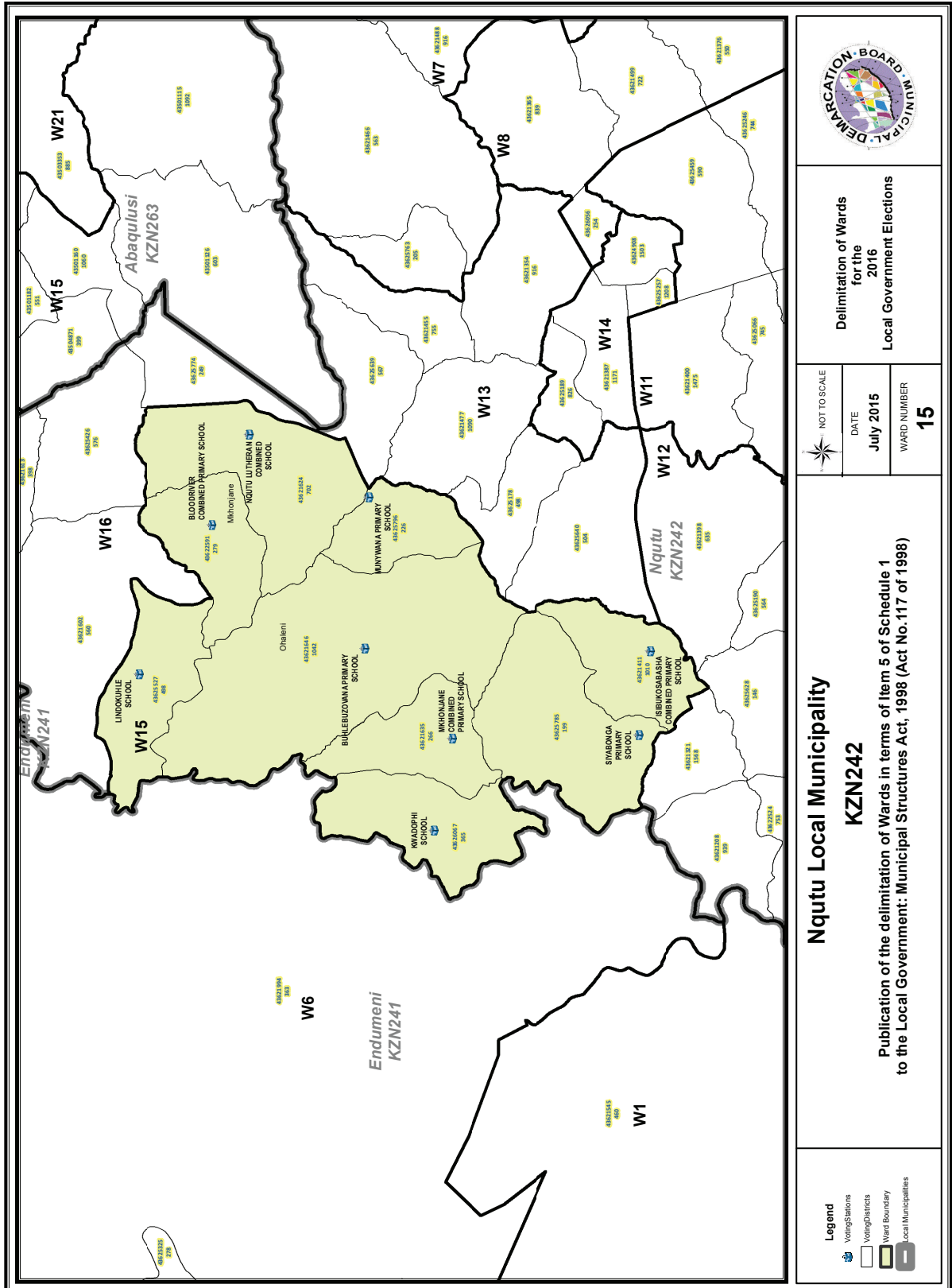


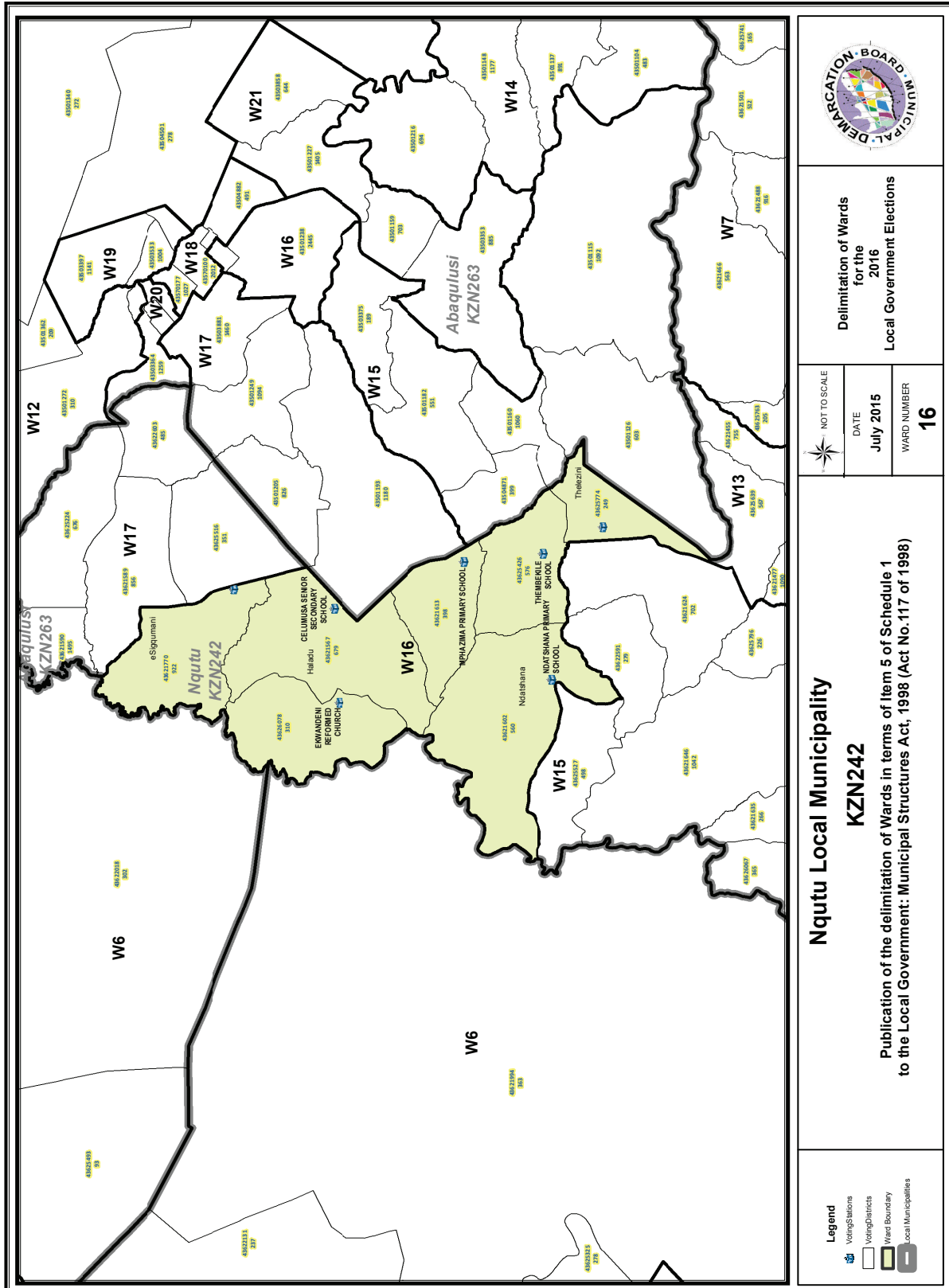
Delimitation of Wards
for the
2016
Local Government Elections

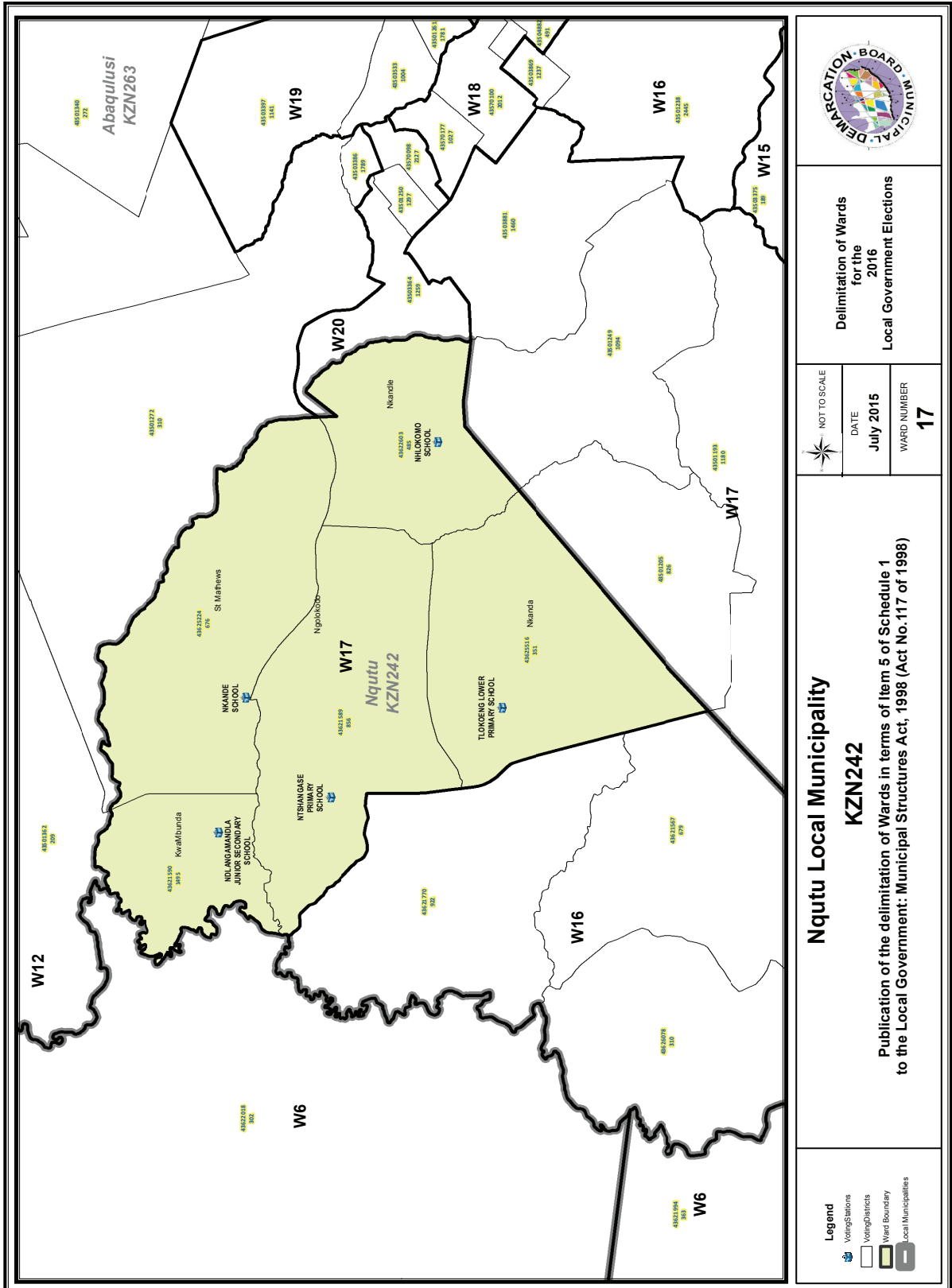
NOT TO SCALE
DATE
July 2015
WARD NUMBER
14

Nqutu Local Municipality
KZN242
Publication of the delimitation of Wards in terms of Item 5 of Schedule 1
to the Local Government: Municipal Structures Act, 1998 (Act No. 117 of 1998)

- Legend**
- Voting Stations
 - Voting Districts
 - Ward Boundary
 - Local Municipalities







FORM/VORM MDB5

WARD DELIMITATION/

WYKSAFBAKENING

**OBJECTION IN TERMS OF ITEM 5(2) OF SCHEDULE 1 TO THE LOCAL GOVERNMENT:
MUNICIPAL STRUCTURES ACT, 1998**

**BESWAAR INGEVOLGE ITEM 5(2) VAN BYLAE 1 VAN DIE WET OP PLAASLIKE REGERING:
MUNISIPALE STRUKTURE, 1998**

Name of municipality/ Naam van Munisipaliteit :.....

Code/Kode :.....

**Name of aggrieved person/institution/Naam van beswaarde persoon/instelling :
.....**

**Contact person in case of an institution/ Kontak persoon in geval van 'n instelling:
.....**

Address/Adres:.....

Tel. number/ Tel. nommer:.....Cell number/ Selfoonnommer:

Email address:.....

PLEASE USE ADDITIONAL PAGE SHOULD THE ALTERNATIVE PROPOSALS BE MORE THAN THE FOLLOWING SPACE AVAILABLE.

I request the Municipal Demarcation Board to consider the following alternative proposals/ Ek versoek die Munisipale Afbakeningsraad om die volgende alternatiewe voorstelle te oorweeg:

Ward number/ Wyk nommer	The ward should comprise of the following voting districts (Provide voting district number and the number of voters in brackets e.g. VD1123456(1500)+VD345678(2500)=4000)/ Die wyk moet bestaan uit die volgende stemdistrikte: (Voorsien die stemdistriknommer en die getal geregistreerde kiesers as volg VD1123456(1500)+VD345678(2500)=4000)	Motivation /Motivering

I confirm that/ Ek bevestig dat:

- each cluster of voting districts form a contiguous ward/ die saamgevoegde stemdistrikte vorm 'n aaneenlopende wyk;
- the number of voters in each ward fall within the minimum and maximum of voters allowed per ward/ die getal kiesers in elke wyk is binne die minimum en maksimum getal wat per wyk toegelaat word;
- the proposed ward boundaries comply, in general, with the criteria/ die voorgestelde wyke voldoen in die algemeen aan die kriteria.

SIGNATURE

NAME AND SURNAME

DATE

IMPORTANT

Information

from Government Printing Works

Dear Valued Customers,

Government Printing Works has implemented rules for completing and submitting the electronic Adobe Forms when you, the customer, submits your notice request.

Please take note of these guidelines when completing your form.

GPW Business Rules

1. No hand written notices will be accepted for processing, this includes Adobe forms which have been completed by hand.
2. Notices can only be submitted in Adobe electronic form format to the email submission address submit.egazette@gpw.gov.za. This means that any notice submissions not on an Adobe electronic form that are submitted to this mailbox will be **rejected**. National or Provincial gazette notices, where the Z95 or Z95Prov must be an Adobe form but the notice content (body) will be an attachment.
3. Notices brought into GPW by "walk-in" customers on electronic media can only be submitted in Adobe electronic form format. This means that any notice submissions not on an Adobe electronic form that are submitted by the customer on electronic media will be **rejected**. National or Provincial gazette notices, where the Z95 or Z95Prov must be an Adobe form but the notice content (body) will be an attachment.
4. All customers who walk in to GPW that wish to submit a notice that is not on an electronic Adobe form will be routed to the Contact Centre where the customer will be taken through the completion of the form by a GPW representative. Where a customer walks into GPW with a stack of hard copy notices delivered by a messenger on behalf of a newspaper the messenger must be referred back to the sender as the submission does not adhere to the submission rules.
5. All notice submissions that do not comply with point 2 will be charged full price for the notice submission.
6. The current cut-off of all Gazette's remains unchanged for all channels. (Refer to the GPW website for submission deadlines – www.gpwonline.co.za)
7. Incorrectly completed forms and notices submitted in the wrong format will be rejected to the customer to be corrected and resubmitted. Assistance will be available through the Contact Centre should help be required when completing the forms. (012-748 6200 or email info.egazette@gpw.gov.za)
8. All re-submissions by customers will be subject to the above cut-off times.
9. All submissions and re-submissions that miss the cut-off will be rejected to the customer to be submitted with a new publication date.
10. Information on forms will be taken as the primary source of the notice to be published. Any instructions that are on the email body or covering letter that contradicts the notice form content will be ignored.

You are therefore advised that effective from **Monday, 18 May 2015** should you not comply with our new rules of engagement, all notice requests will be rejected by our new system.

Furthermore, the fax number **012- 748 6030** will also be **discontinued** from this date and customers will only be able to submit notice requests through the email address submit.egazette@gpw.gov.za.



Printed by and obtainable from the Government Printer, Bosman Street, Private Bag X85, Pretoria, 0001.
 Contact Centre Tel: 012-748 6200. eMail: info.egazette@gpw.gov.za