



KwAZULU-NATAL PROVINCE
KwAZULU-NATAL PROVINSIE
ISIFUNDAZWE SA KwAZULU-NATALI

Provincial Gazette • Provinsiale Koerant • Igazethi Yesifundazwe

GAZETTE EXTRAORDINARY—BUITENGEWONE KOERANT—IGAZETHI EYISIPESHELI

(Registered at the post office as a newspaper) • (As 'n nuusblad by die poskantoor geregistreer)
(Irejistiwee njengephephandaba eposihhovisi)

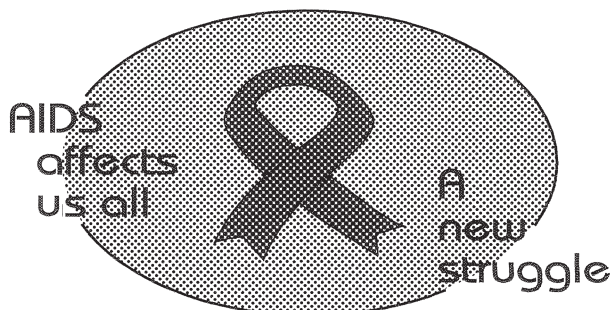
PIETERMARITZBURG

Vol. 9

27 JULY 2015
27 JULIE 2015
27 KUNTULIKAZI 2015

No. 1432

We all have the power to prevent AIDS



**AIDS
HELPLINE**

0800 012 322

DEPARTMENT OF HEALTH

Prevention is the cure

N.B. The Government Printing Works will not be held responsible for the quality of "Hard Copies" or "Electronic Files" submitted for publication purposes

ISSN 1994-4558



9 771994 455008

01432



IMPORTANT

Information

from Government Printing Works

Dear Valued Customers,

Government Printing Works has implemented rules for completing and submitting the electronic Adobe Forms when you, the customer, submits your notice request.

Please take note of these guidelines when completing your form.



GPW Business Rules

1. No hand written notices will be accepted for processing, this includes Adobe forms which have been completed by hand.
2. Notices can only be submitted in Adobe electronic form format to the email submission address submit.egazette@gpw.gov.za. This means that any notice submissions not on an Adobe electronic form that are submitted to this mailbox will be **rejected**. National or Provincial gazette notices, where the Z95 or Z95Prov must be an Adobe form but the notice content (body) will be an attachment.
3. Notices brought into GPW by "walk-in" customers on electronic media can only be submitted in Adobe electronic form format. This means that any notice submissions not on an Adobe electronic form that are submitted by the customer on electronic media will be **rejected**. National or Provincial gazette notices, where the Z95 or Z95Prov must be an Adobe form but the notice content (body) will be an attachment.
4. All customers who walk in to GPW that wish to submit a notice that is not on an electronic Adobe form will be routed to the Contact Centre where the customer will be taken through the completion of the form by a GPW representative. Where a customer walks into GPW with a stack of hard copy notices delivered by a messenger on behalf of a newspaper the messenger must be referred back to the sender as the submission does not adhere to the submission rules.
5. All notice submissions that do not comply with point 2 will be charged full price for the notice submission.
6. The current cut-off of all Gazette's remains unchanged for all channels. (Refer to the GPW website for submission deadlines – www.gpwonline.co.za)
7. Incorrectly completed forms and notices submitted in the wrong format will be rejected to the customer to be corrected and resubmitted. Assistance will be available through the Contact Centre should help be required when completing the forms. (012-748 6200 or email info.egazette@gpw.gov.za)
8. All re-submissions by customers will be subject to the above cut-off times.
9. All submissions and re-submissions that miss the cut-off will be rejected to the customer to be submitted with a new publication date.
10. Information on forms will be taken as the primary source of the notice to be published. Any instructions that are on the email body or covering letter that contradicts the notice form content will be ignored.

You are therefore advised that effective from **Monday, 18 May 2015** should you not comply with our new rules of engagement, all notice requests will be rejected by our new system.

Furthermore, the fax number **012- 748 6030** will also be **discontinued** from this date and customers will only be able to submit notice requests through the email address submit.egazette@gpw.gov.za.

DISCLAIMER:

Government Printing Works reserves the right to apply the 25% discount to all Legal and Liquor notices that comply with the business rules for notice submissions for publication in gazettes.

National, Provincial, Road Carrier Permits and Tender notices will pay the price as published in the Government Gazettes.

For any information, please contact the eGazette Contact Centre on 012-748 6200 or email info.egazette@gpw.gov.za

Table of Contents

<i>No.</i>		<i>Gazette No.</i>	<i>Page No.</i>
PROVINCIAL NOTICES • PROVINSIALE KENNISGEWINGS			
76	Local Government: Municipal Structures Act (117/1998): Municipal Demarcation Board: Delimitation of municipal wards: Mandeni Local Municipality (KZN291).....	1432	4
76	Wet Op Plaaslike Regering: Munisipale Strukture (117/1998: Munisipale Afbakeningsraad: Afbakening van munisipale wyke: Mandeni Local Municipality (KZN291).....	1432	5

PROVINCIAL NOTICES • PROVINSIALE KENNISGEWINGS

PROVINCIAL NOTICE 76 OF 2015**MUNICIPAL DEMARCATION BOARD : DELIMITATION OF
MUNICIPAL WARDS IN TERMS OF THE LOCAL
GOVERNMENT : MUNICIPAL STRUCTURES ACT, 1998.****Mandeni Local Municipality
KZN291**

In terms of Item 5 (1) of Schedule 1 to the Local Government: Municipal Structures Act, 1998 (Act No. 117 of 1998) (the Act) the Municipal Demarcation Board hereby publishes its delimitation of wards for the above-mentioned municipality. Particulars of the delimitation are listed in the Schedule.

In terms of Item 5 (2) of Schedule 1 to the Act, any person aggrieved by the delimitation may, within 14 days of publication of this notice, submit objections in writing to:

The Municipal Demarcation Board
Private Bag X123
Centurion
0046

Fax: 086 5248643
Email: wards@demarcation.org.za

The attached form MDB 5 must please be used to object. The form is also available on www.demarcation.org.za

**MS JANE THUPANA
CHAIRPERSON: MUNICIPAL DEMARCATION BOARD****SCHEDULE**

In terms of section 18(3) of the Local Government: Municipal Structures Act, 1998 (Act 117 of 1998), the MEC responsible for local government has determined that the municipal council consists of 35 councillors.

After having consulted the Independent Electoral Commission, The Municipal Demarcation Board has delimited the municipality into 18 wards in terms of Schedule 1 of the Act.

The number of registered voters in each ward does not vary by more than fifteen percent from the norm. The norm was determined by dividing the total number of voters on the municipal segment of the national common voters roll, namely 69735 voters on 5 March 2014, by the number of wards in the municipality.

An overview map of the boundary of the municipality, with the boundaries of the wards within the municipality, and a map of each ward are attached. In case of a discrepancy between the map and this schedule, the map will prevail. The ward numbers, the voting districts and voting stations in each ward, and the number of voters are as follows:

PROVINSIALE KENNISGEWING 76 VAN 2015**MUNISIPALE AFBAKENINGSRAAD :
AFBAKENING VAN MUNISIPALE WYKE INGEVOLGE DIE WET OP
PLAASLIKE REGERING: MUNISIPALE STRUKTURE, 1998****Mandeni Local Municipality****KZN291**

Ingevolge Item 5(1) van Bylae 1 van die Wet op Plaaslike Regering: Munisipale Strukture, 1998 (Wet No. 117 van 1998) (die Wet) publiseer die Munisipale Afbakeningsraad hiermee sy afbakening van wyke vir die bogenoemde munisipaliteit. Besonderhede van die afbakening is vervat in die Bylae.

Ingevolge item 5(2) van Bylae 1 van die Wet, kan enige persoon wat gegrief is deur 'n afbakening binne 14 dae vanaf publikasie van hierdie kennisgewing skriftelike besware voorlê aan:

Die Munisipale Afbakeningsraad
Privaatsak X123
Centurion
0046

Faks: 086 5248643
E-pos: wards@demarcation.org.za

Die aangehegte vorm MDB5 moet asseblief gebruik word om beswaar aan te teken. Die vorm is ook beskikbaar op www.demarcation.org.za

MS JANE THUPANA
VOORSITTER : MUNISIPALE AFBAKENINGSRAAD

BYLAE

Ingevolge artikel 18(3) van die Wet op Plaaslike Regering: Munisipale Strukture, 1998 (Wet 117 van 1998) het die LUR vir plaaslike regering bepaal dat die munisipale raad bestaan uit 35 raadslede.

Na oorlegpleging met die Onafhanklike Verkiesingskommissie het die Munisipale Afbakeningsraad die munisipaliteit in 18 wyke afgebaken ingevolge Bylae 1 van die Wet.

Die getal geregistreerde kiesers in elke wyk, wyk nie meer as vyftien persent van die norm af nie. Die norm is bepaal deur die getal geregistreerde kiesers op die munisipale segment van die nasionale gemeenskaplike kieserslys, naamlik 69735 kiesers op 5 Maart 2014, deur die getal wyke in die munisipaliteit te deel.

'n Oorsigkaart van die munisipale grens met die grense van die wyke binne die munisipale grens, en 'n kaart van elke wyk, is aangeheg. Ingeval van 'n verskil tussen 'n kaart en hierdie bylae, sal die kaart geld.

Die wyknommers, die stembedstrikte en stemlokale in elke wyk, en die getal kiesers is as volg:

Ward 1 comprises of a total of 4179 registered voters.
Wyk 1 bestaan uit 'n totaal van 4179 geregistreerde kiesers.
 MIN VOTERS/KIESER 3293 NORM 3874 MAX VOTERS/KIESER 4455

VOTING DISTRICT No. STEMDISTRIK No.	VOTING STATION NAME STEMLOKAAL NAAM	NUMBER OF VOTERS GETAL KIESERS	SPLIT VD VERDEELDE SD
43412004	AMATIGULU HIGH SCHOOL	1059	
43411991	EBENDLE SCHOOL	914	
43412015	THEKELIMFUNDO PRIMARY SCHOOL	982	
43417559	INGOBAMAKHOSI SCHOOL	684	
43417447	MANGQAKAZA COMMUNITY HALL	540	

Ward 2 comprises of a total of 4001 registered voters.
Wyk 2 bestaan uit 'n totaal van 4001 geregistreerde kiesers.
 MIN VOTERS/KIESER 3293 NORM 3874 MAX VOTERS/KIESER 4455

VOTING DISTRICT No. STEMDISTRIK No.	VOTING STATION NAME STEMLOKAAL NAAM	NUMBER OF VOTERS GETAL KIESERS	SPLIT VD VERDEELDE SD
43418156	SAKHESETHU SCHOOL	664	
43411946	EMTHALENI SCHOOL	777	
43411924	SIKHUTHELE SCHOOL	1466	
43411979	EMHLUBULWENI SCHOOL	1054	
43417560	TEMPORARY VOTING STATION (OPEN SPACE)	40	Yes/Ja

Ward 3 comprises of a total of 4455 registered voters.
Wyk 3 bestaan uit 'n totaal van 4455 geregistreerde kiesers.
 MIN VOTERS/KIESER 3293 NORM 3874 MAX VOTERS/KIESER 4455

VOTING DISTRICT No. STEMDISTRIK No.	VOTING STATION NAME STEMLOKAAL NAAM	NUMBER OF VOTERS GETAL KIESERS	SPLIT VD VERDEELDE SD
43415210	NEW LIFE CHRISTIAN SCHOOL	760	
43460018	TUGELA SECONDARY SCHOOL	810	
43460029	MANDINI ACADEMY	1631	
43417560	TEMPORARY VOTING STATION (OPEN SPACE)	125	Yes/Ja
43417458	LOMO SUPERITE STORE	224	
43415535	IFALETHU SCHOOL	313	
43460119	GLOBAL DESTINY OUTREACH CHURCH	592	

Ward 4 comprises of a total of 3920 registered voters.
Wyk 4 bestaan uit 'n totaal van 3920 geregistreerde kiesers.
 MIN VOTERS/KIESER 3293 NORM 3874 MAX VOTERS/KIESER 4455

VOTING DISTRICT No. STEMDISTRIK No.	VOTING STATION NAME STEMLOKAAL NAAM	NUMBER OF VOTERS GETAL KIESERS	SPLIT VD VERDEELDE SD
43580976	NORVAS FARM	221	
43460096	PADINAGAR PARK	1295	
43582237	NEWARK SCHOOL	2404	

Ward 5 comprises of a total of 4137 registered voters.
Wyk 5 bestaan uit 'n totaal van 4137 geregistreerde kiesers.

MIN VOTERS/KIESER 3293 NORM 3874 MAX VOTERS/KIESER 4455

VOTING DISTRICT No. STEMDISTRIK No.	VOTING STATION NAME STEMLOKAAL NAAM	NUMBER OF VOTERS GETAL KIESERS	SPLIT VD VERDEELDE SD
43411867	MATHONSI PRIMARY SCHOOL	56	Yes/Ja
43411878	IWETANE PRIMARY SCHOOL	1323	
43411799	ENEMBE PRIMARY SCHOOL	1783	
43417469	ZAMOKUHLESTORE	395	
43411788	DENDETHU SCHOOL	580	

Ward 6 comprises of a total of 3753 registered voters.
Wyk 6 bestaan uit 'n totaal van 3753 geregistreerde kiesers.

MIN VOTERS/KIESER 3293 NORM 3874 MAX VOTERS/KIESER 4455

VOTING DISTRICT No. STEMDISTRIK No.	VOTING STATION NAME STEMLOKAAL NAAM	NUMBER OF VOTERS GETAL KIESERS	SPLIT VD VERDEELDE SD
43415513	SIKHONYANE SCHOOL	535	
43411698	NKOMIDLI PRIMARY SCHOOL	865	
43411700	NKWENKWEZI SCHOOL	948	
43412138	EVUTHA SCHOOL	1405	

Ward 7 comprises of a total of 4445 registered voters.
Wyk 7 bestaan uit 'n totaal van 4445 geregistreerde kiesers.

MIN VOTERS/KIESER 3293 NORM 3874 MAX VOTERS/KIESER 4455

VOTING DISTRICT No. STEMDISTRIK No.	VOTING STATION NAME STEMLOKAAL NAAM	NUMBER OF VOTERS GETAL KIESERS	SPLIT VD VERDEELDE SD
43416299	ETHEL MTHIYANE SPECIAL SCHOOL	1030	Yes/Ja
43411801	IMPOQABULUNGA SCHOOL	3415	

Ward 8 comprises of a total of 4265 registered voters.
Wyk 8 bestaan uit 'n totaal van 4265 geregistreerde kiesers.

MIN VOTERS/KIESER 3293 NORM 3874 MAX VOTERS/KIESER 4455

VOTING DISTRICT No. STEMDISTRIK No.	VOTING STATION NAME STEMLOKAAL NAAM	NUMBER OF VOTERS GETAL KIESERS	SPLIT VD VERDEELDE SD
--	--	-----------------------------------	--------------------------

43411968	MGOVUZU SCHOOL	667
43411980	SOMSHOKO SCHOOL	898
43415524	LAMBOTI SCHOOL	995
43418178	LOKOTHWAYO SCHOOL	562
43415018	ISINYABUSI SCHOOL	1143

Ward 9 comprises of a total of 4418 registered voters.
Wyk 9 bestaan uit 'n totaal van 4418 geregistreerde kiesers.

MIN VOTERS/KIESER 3293 NORM 3874 MAX VOTERS/KIESER 4455

VOTING DISTRICT No. STEMDISTRIK No.	VOTING STATION NAME STEMLOKAAL NAAM	NUMBER OF VOTERS GETAL KIESERS	SPLIT VD VERDEELDE SD
43418167	GINA STORE	348	
43411957	NKUNZEMALUNDA SCHOOL	949	
43417515	ST PATRICKS CATHOLIC CHURCH	366	
43411935	NDONDAKUSUKA HIGH SCHOOL	1717	
43418785	MACAMBINI BAPTIST CHURCH	611	
43416020	THE NAZARENE CHURCH	427	

Ward 10 comprises of a total of 3762 registered voters.
Wyk 10 bestaan uit 'n totaal van 3762 geregistreerde kiesers.

MIN VOTERS/KIESER 3293 NORM 3874 MAX VOTERS/KIESER 4455

VOTING DISTRICT No. STEMDISTRIK No.	VOTING STATION NAME STEMLOKAAL NAAM	NUMBER OF VOTERS GETAL KIESERS	SPLIT VD VERDEELDE SD
43418796	KHENAN SHELTER	137	
43418808	APOSTOLIC CHURCH	1014	
43415546	MATHONSI CRECHE	1132	
43411654	MANDENI SCHOOL	1479	

Ward 11 comprises of a total of 3606 registered voters.
Wyk 11 bestaan uit 'n totaal van 3606 geregistreerde kiesers.

MIN VOTERS/KIESER 3293 NORM 3874 MAX VOTERS/KIESER 4455

VOTING DISTRICT No. STEMDISTRIK No.	VOTING STATION NAME STEMLOKAAL NAAM	NUMBER OF VOTERS GETAL KIESERS	SPLIT VD VERDEELDE SD
43411823	AFRICAN GOSPEL CHURCH	1729	Yes/Ja
43411890	AMAGUNDANENI COMMUNITY HALL	959	
43414804	MCATSHANGELWA SCHOOL	918	

Ward 12	comprises of a total of 4429	registered voters.
Wyk 12	bestaan uit 'n totaal van 4429	geregistreerde kiesers.
MIN VOTERS/KIESER	3293	NORM 3874 MAX VOTERS/KIESER 4455

VOTING DISTRICT No.	VOTING STATION NAME	NUMBER OF VOTERS	SPLIT VD
STEMDISTRIK No.	STEMLOKAAL NAAM	GETAL KIESERS	VERDEELDE SD
43411867	MATHONSI PRIMARY SCHOOL	600	Yes/Ja
43411856	MATHONSI TRIBAL COURT	2725	
43417009	THANDANANI	1104	

Ward 13	comprises of a total of 3293	registered voters.
Wyk 13	bestaan uit 'n totaal van 3293	geregistreerde kiesers.
MIN VOTERS/KIESER	3293	NORM 3874 MAX VOTERS/KIESER 4455

VOTING DISTRICT No.	VOTING STATION NAME	NUMBER OF VOTERS	SPLIT VD
STEMDISTRIK No.	STEMLOKAAL NAAM	GETAL KIESERS	VERDEELDE SD
43460074	SUNDUMBILI LIBRARY	632	Yes/Ja
43460052	SIYAVIKELWA H.P.SCHOOL	2661	

Ward 14	comprises of a total of 3343	registered voters.
Wyk 14	bestaan uit 'n totaal van 3343	geregistreerde kiesers.
MIN VOTERS/KIESER	3293	NORM 3874 MAX VOTERS/KIESER 4455

VOTING DISTRICT No.	VOTING STATION NAME	NUMBER OF VOTERS	SPLIT VD
STEMDISTRIK No.	STEMLOKAAL NAAM	GETAL KIESERS	VERDEELDE SD
43460074	SUNDUMBILI LIBRARY	659	Yes/Ja
43460063	SUNDUMBILI PRIMARY SCHOOL	52	Yes/Ja
43460041	UBUHLEBESUNDUMBILI P. SCHOOL	2632	

Ward 15	comprises of a total of 3394	registered voters.
Wyk 15	bestaan uit 'n totaal van 3394	geregistreerde kiesers.
MIN VOTERS/KIESER	3293	NORM 3874 MAX VOTERS/KIESER 4455

VOTING DISTRICT No.	VOTING STATION NAME	NUMBER OF VOTERS	SPLIT VD
STEMDISTRIK No.	STEMLOKAAL NAAM	GETAL KIESERS	VERDEELDE SD
43460085	THUKELA SECONDARY SCHOOL	1011	
43460063	SUNDUMBILI PRIMARY SCHOOL	2240	Yes/Ja
43416299	ETHEL MTHIYANE SPECIAL SCHOOL	143	Yes/Ja

Ward 16	comprises of a total of 3704	registered voters.
Wyk 16	bestaan uit 'n totaal van 3704	geregistreerde kiesers.
MIN VOTERS/KIESER	3293	NORM 3874 MAX VOTERS/KIESER 4455

VOTING DISTRICT No.	VOTING STATION NAME	NUMBER OF VOTERS	SPLIT VD
STEMDISTRIK No.	STEMLOKAAL NAAM	GETAL KIESERS	VERDEELDE SD

43411913	HLANGANANI HP SCHOOL	774
43412161	EKUVUKENI SCHOOL	893
43418820	SWEDISH CHURCH	871
43415557	LINDAYIPHI PRIMARY SCHOOL	1166

Ward 17 comprises of a total of 3338 registered voters.
Wyk 17 bestaan uit 'n totaal van 3338 geregistreerde kiesers.

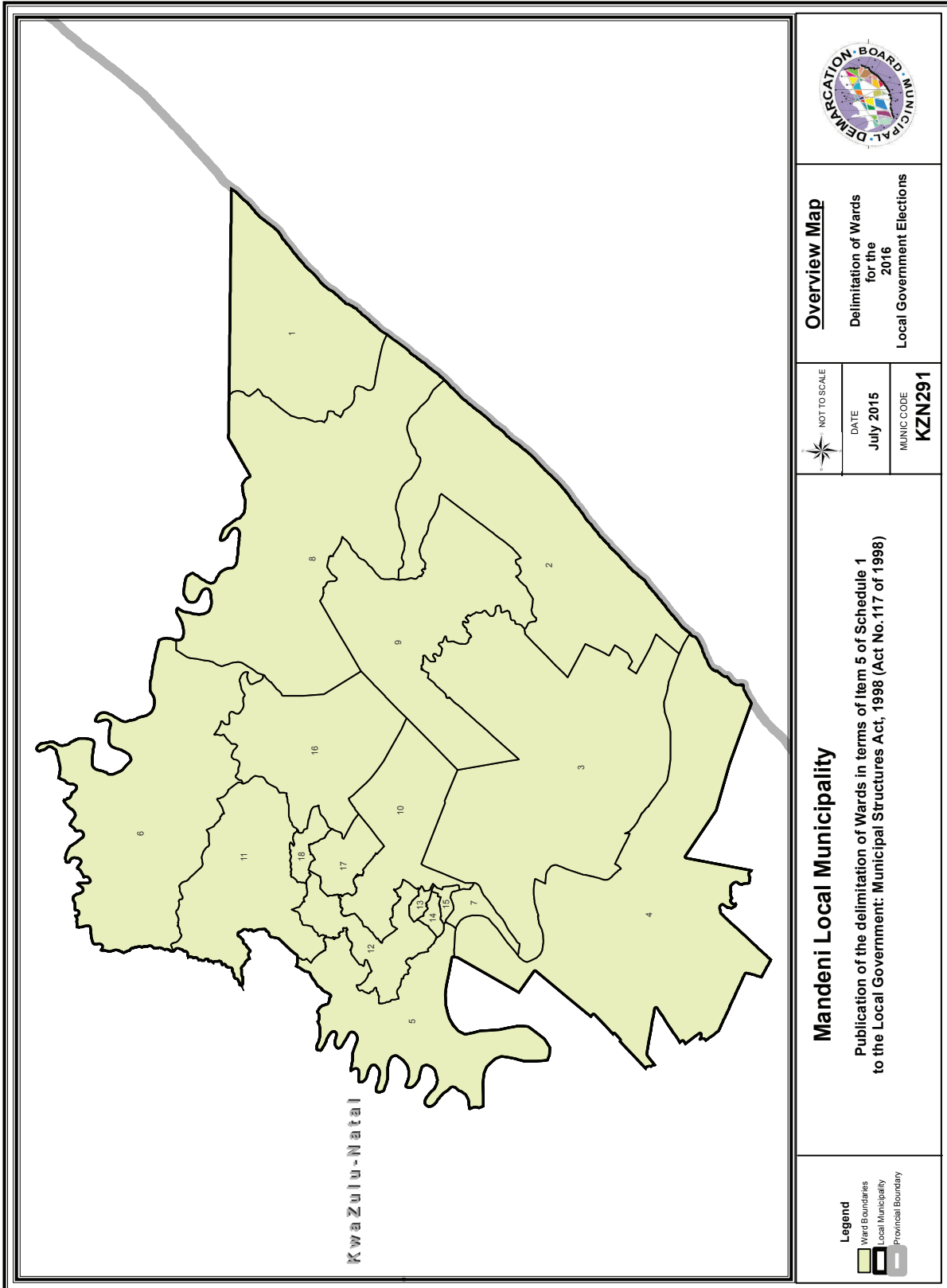
MIN VOTERS/KIESER 3293 NORM 3874 MAX VOTERS/KIESER 4455

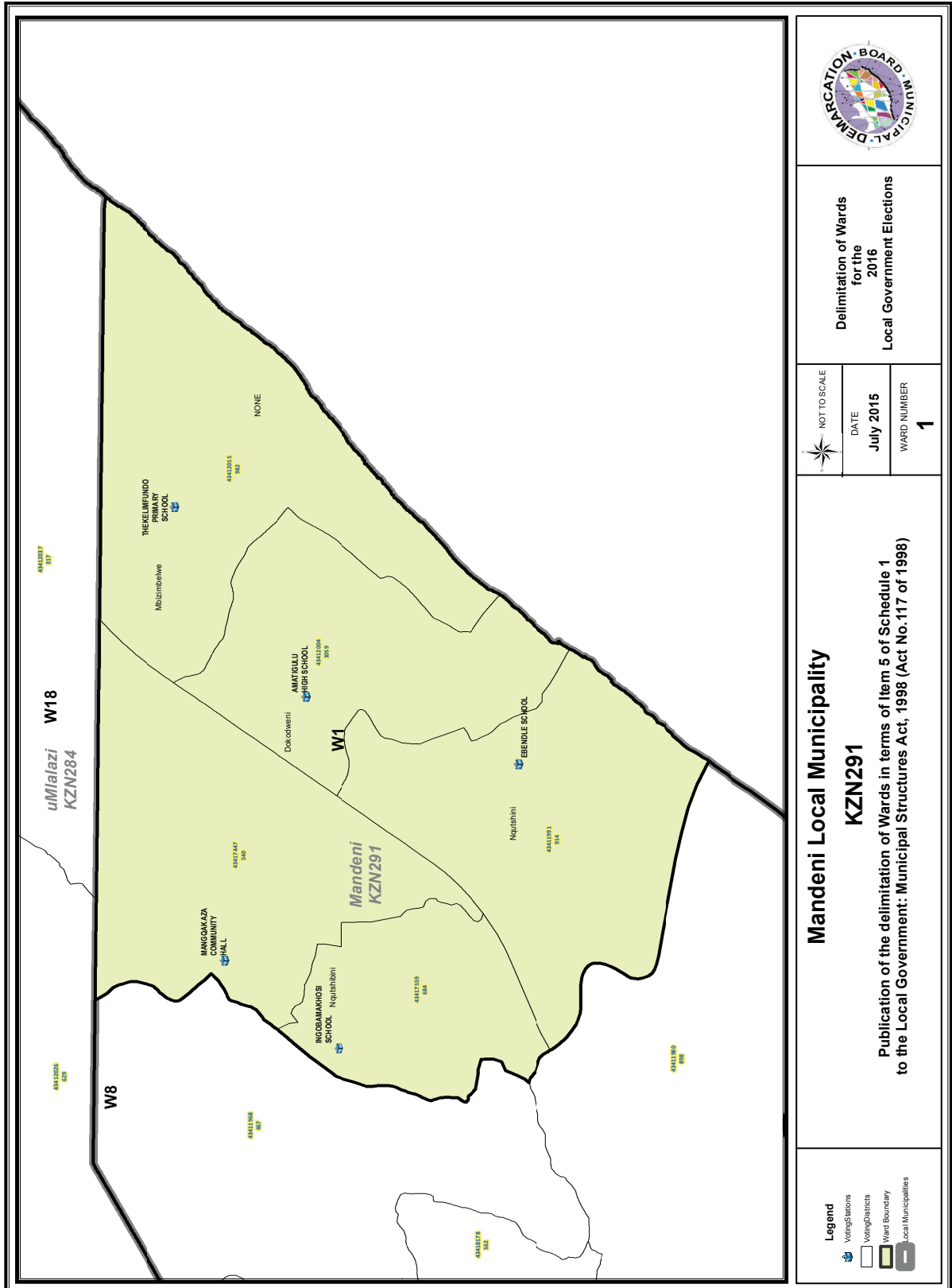
VOTING DISTRICT No. STEMDISTRIK No.	VOTING STATION NAME STEMLOKAAL NAAM	NUMBER OF VOTERS GETAL KIESERS	SPLIT VD VERDEELDE SD
43414747	ISITHEBE PRIMARY SCHOOL	2495	
43418831	KHAYALAMI STORE	843	

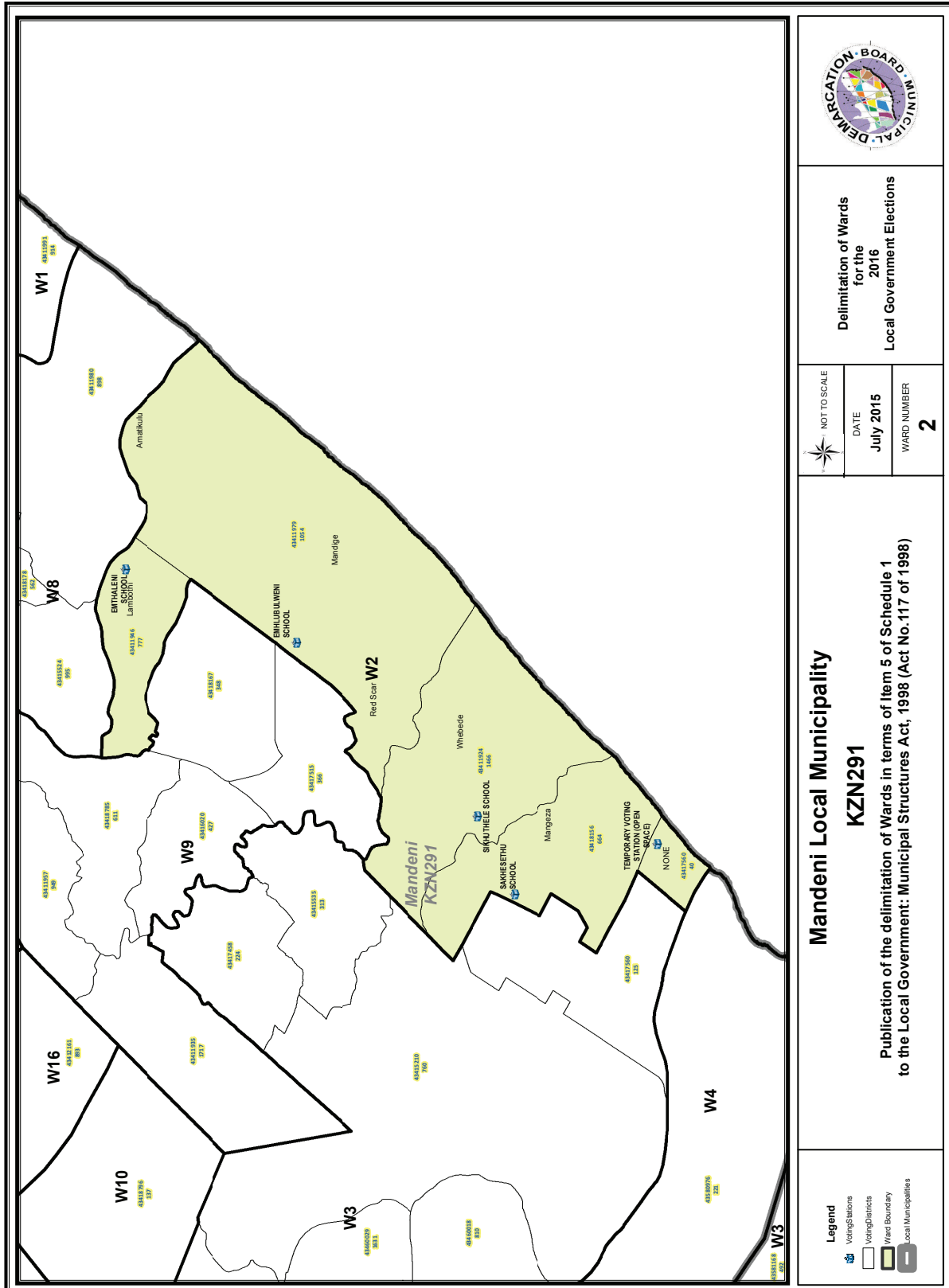
Ward 18 comprises of a total of 3293 registered voters.
Wyk 18 bestaan uit 'n totaal van 3293 geregistreerde kiesers.

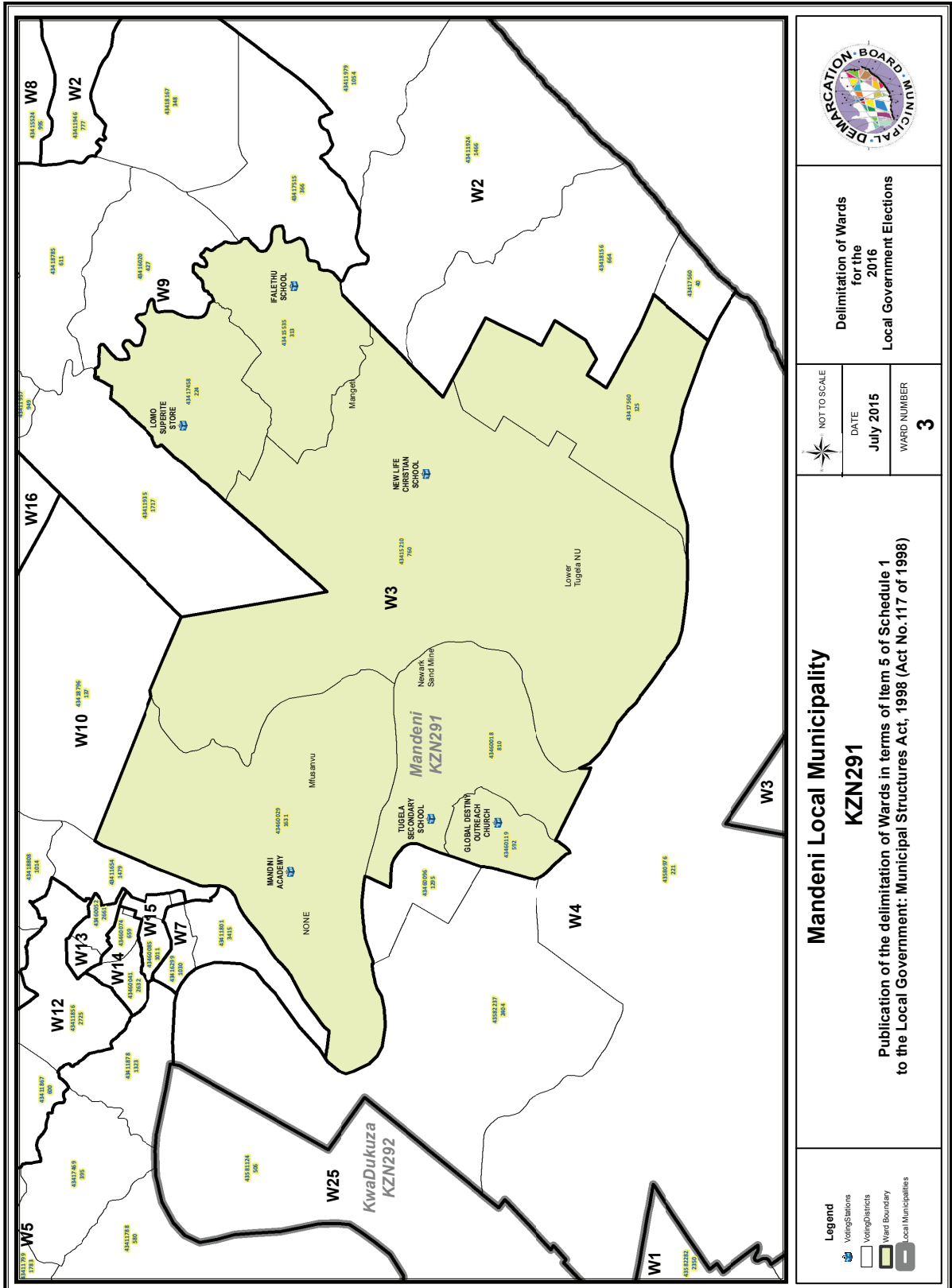
MIN VOTERS/KIESER 3293 NORM 3874 MAX VOTERS/KIESER 4455

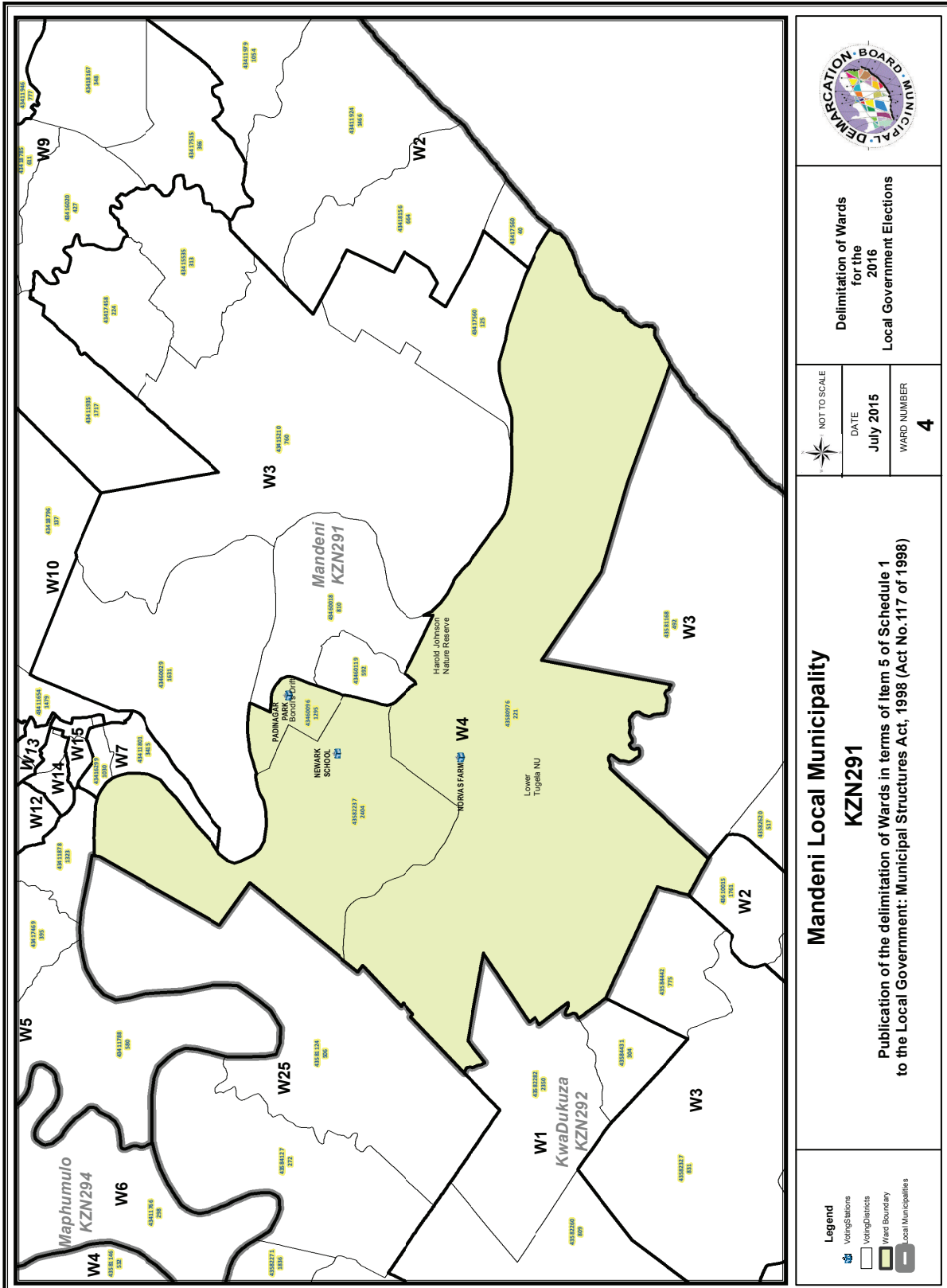
VOTING DISTRICT No. STEMDISTRIK No.	VOTING STATION NAME STEMLOKAAL NAAM	NUMBER OF VOTERS GETAL KIESERS	SPLIT VD VERDEELDE SD
43418819	APOSTOLIC FAITH MISSION	473	
43411823	AFRICAN GOSPEL CHURCH	814	Yes/Ja
43417010	SHANDUS CRECHE	2006	

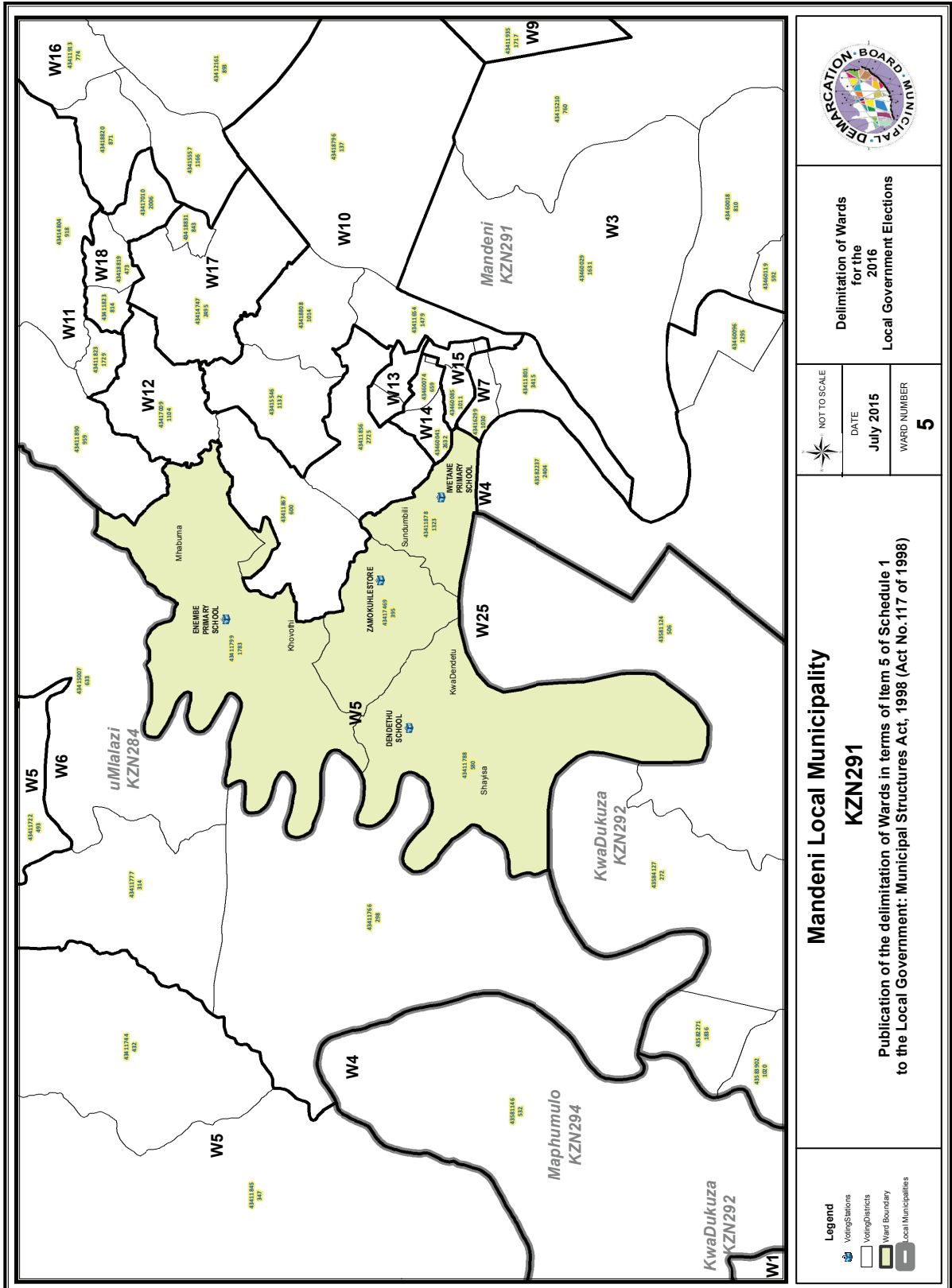


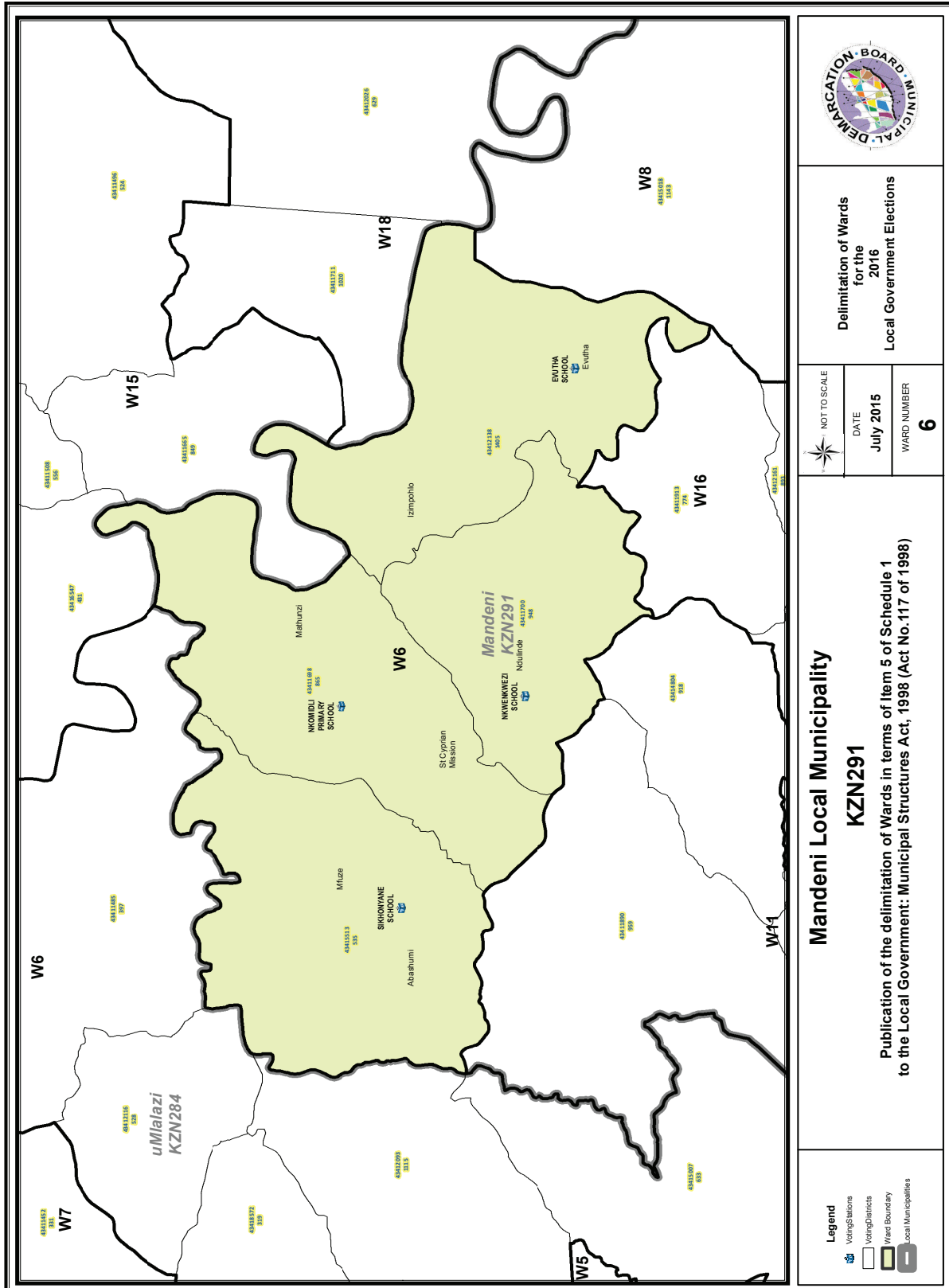










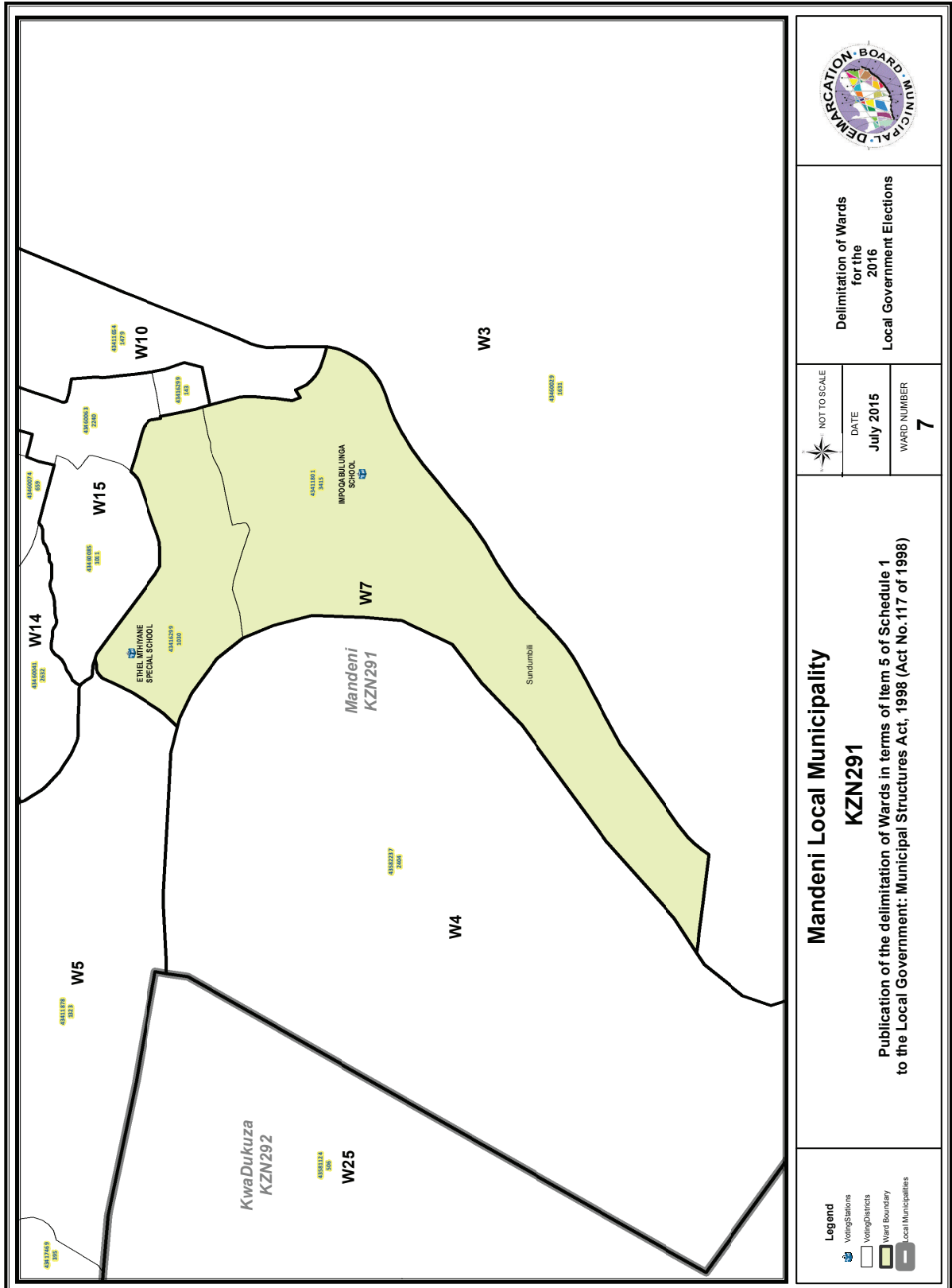


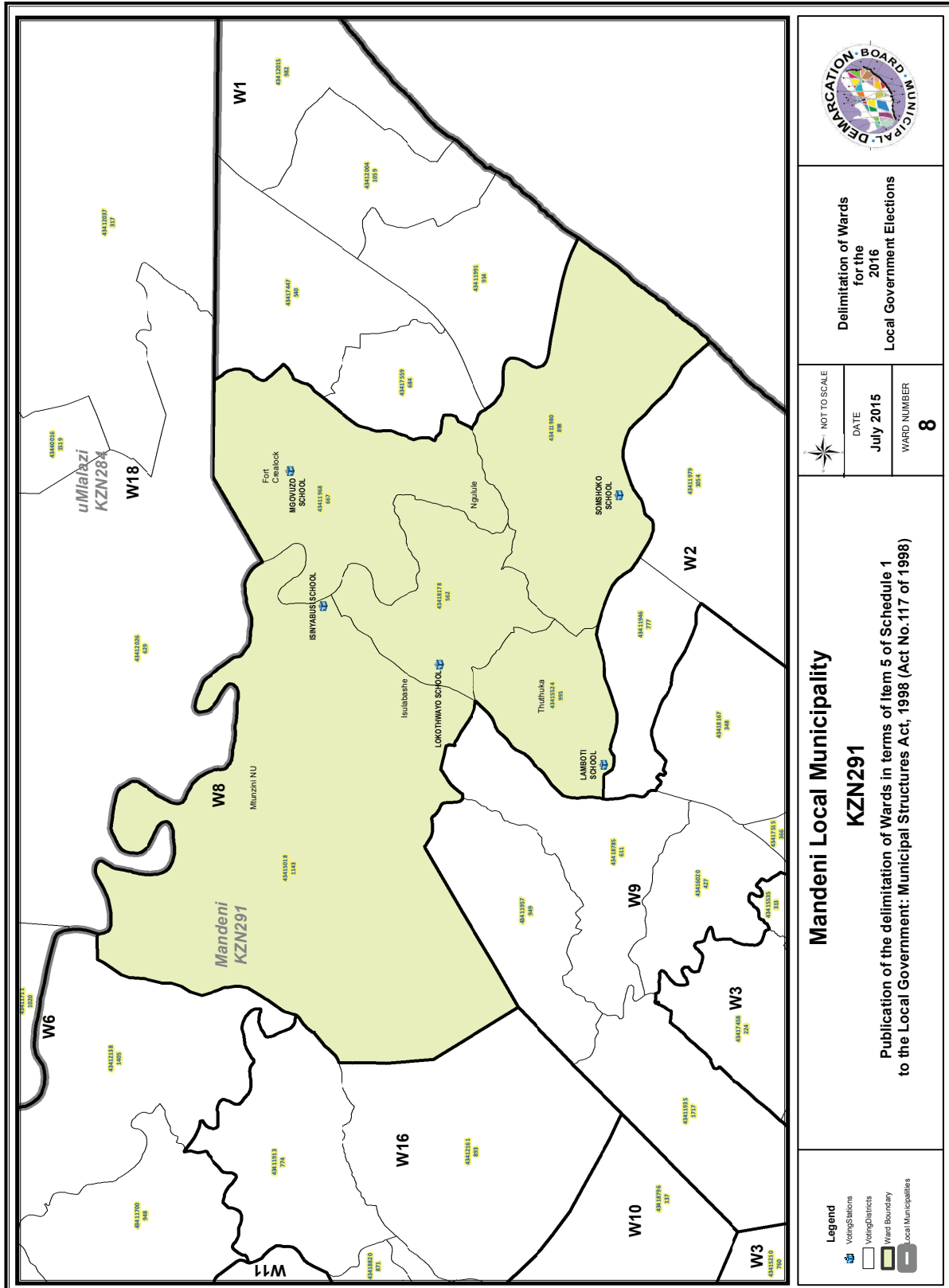
**Delimitation of Wards
for the
2016
Local Government Elections**

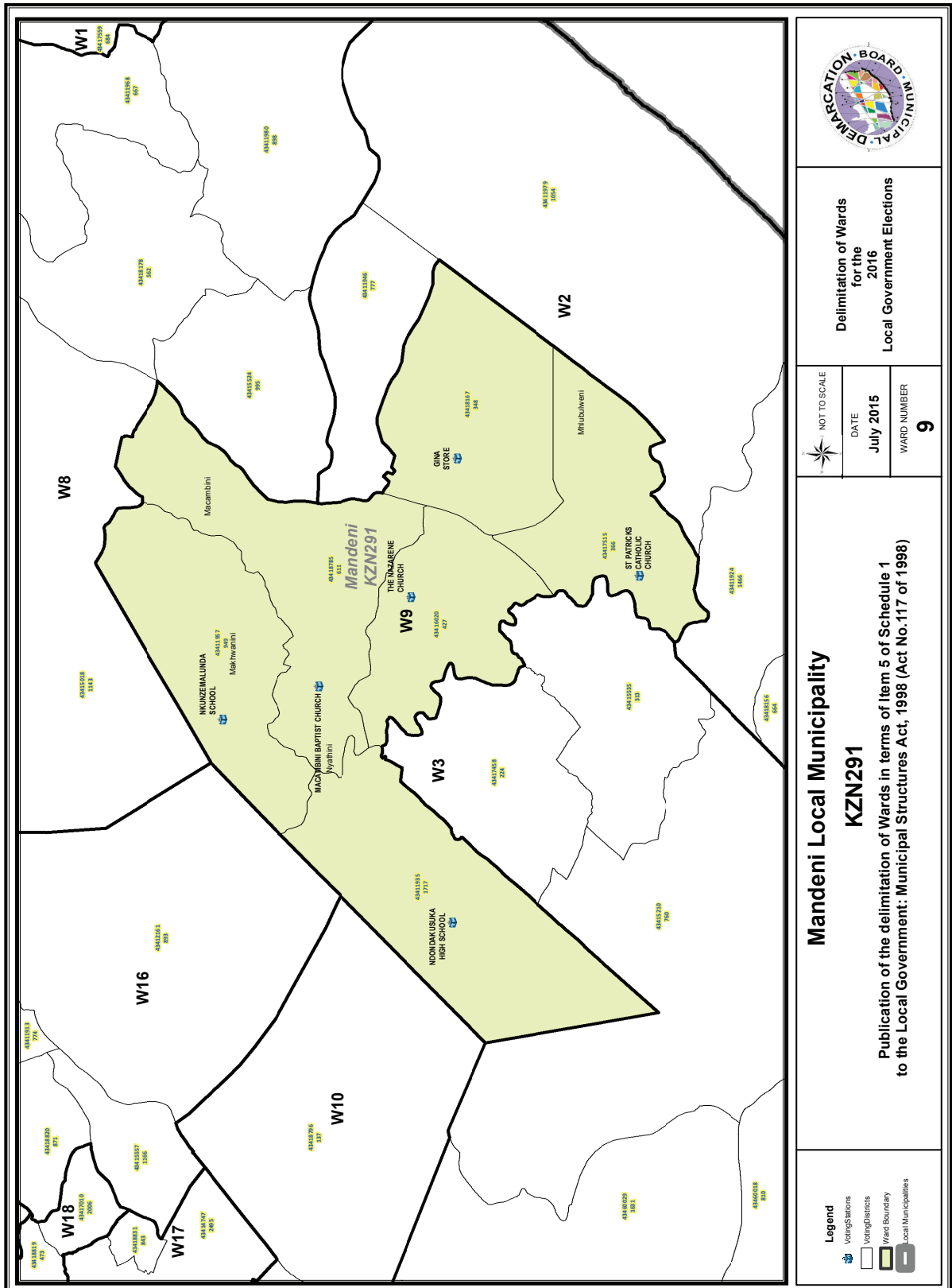
NOT TO SCALE
DATE
July 2015
WARD NUMBER
6

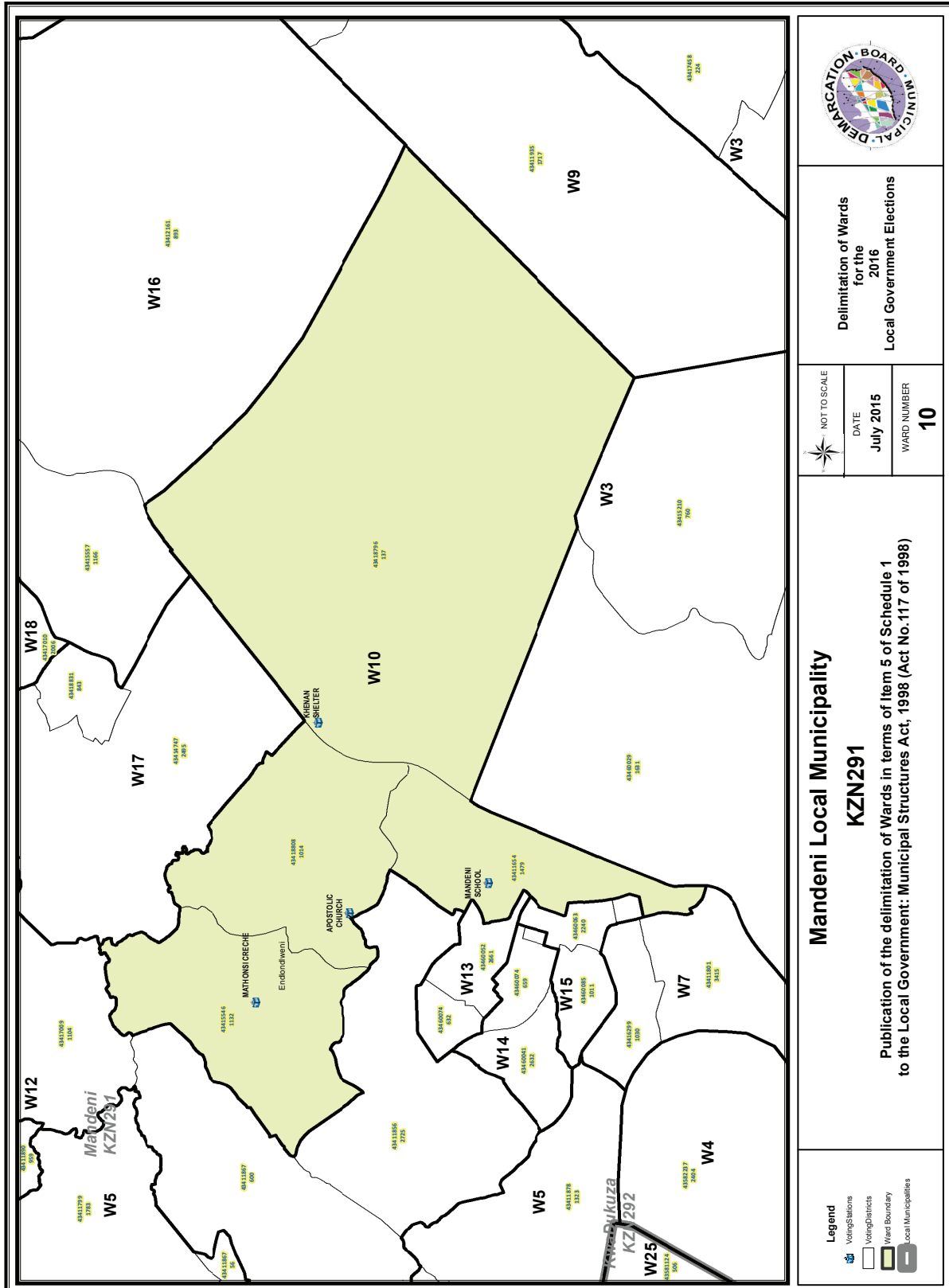
**Mandeni Local Municipality
KZN291**
Publication of the delimitation of Wards in terms of Item 5 of Schedule 1
to the Local Government: Municipal Structures Act, 1998 (Act No.117 of 1998)

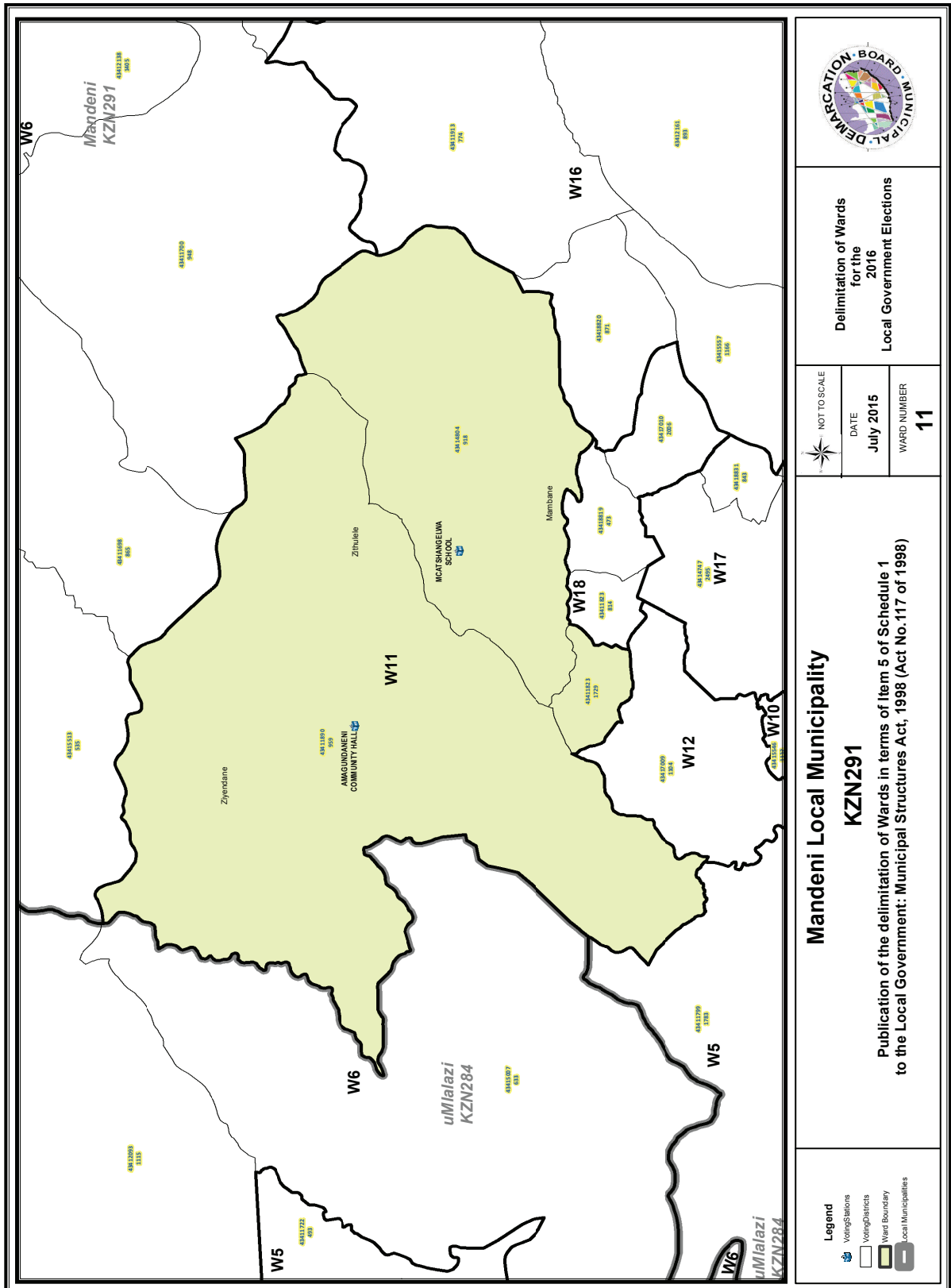
- Legend**
- Voting Stations
 - Voting Districts
 - Ward Boundary
 - Local Municipalities

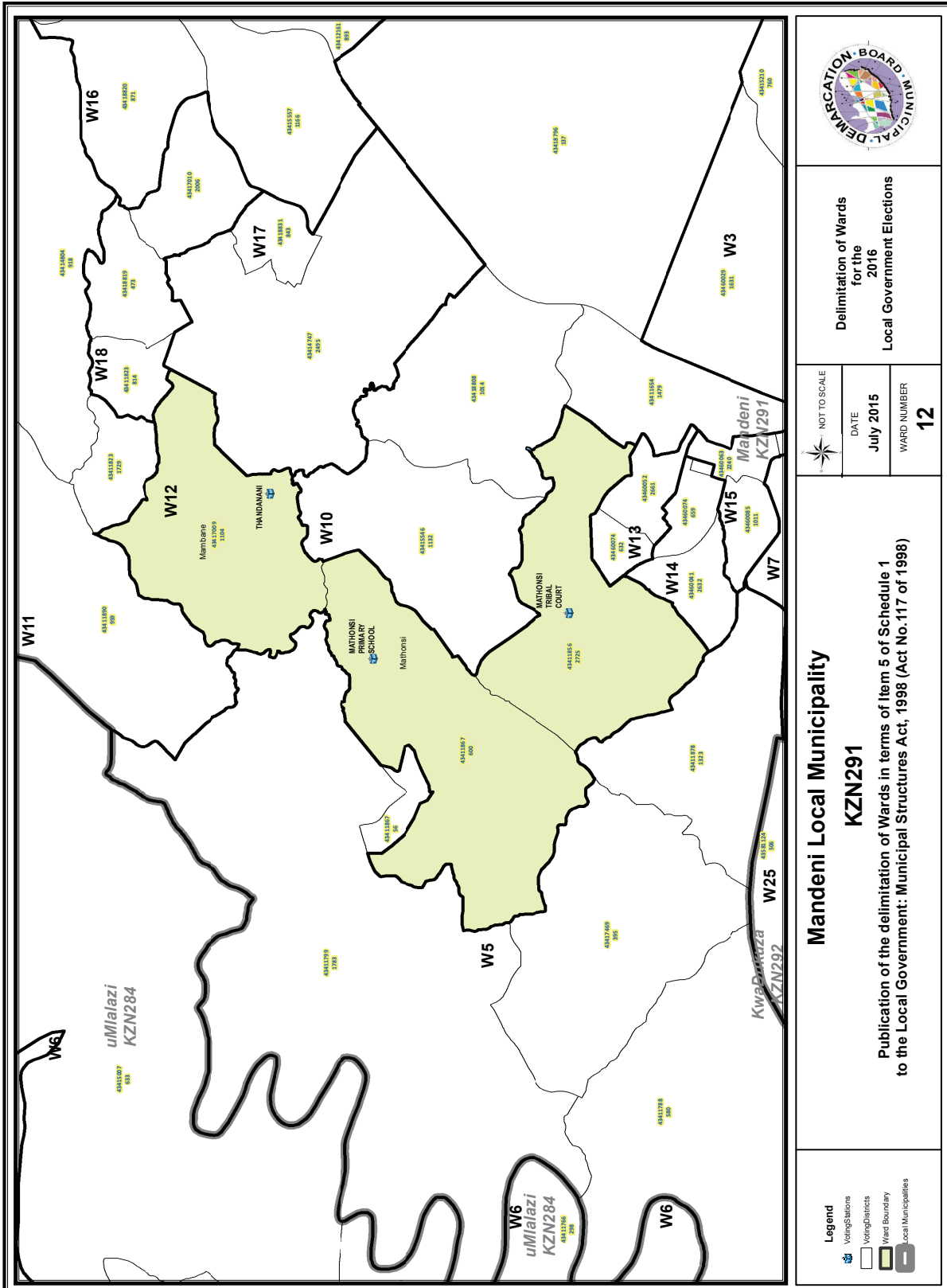


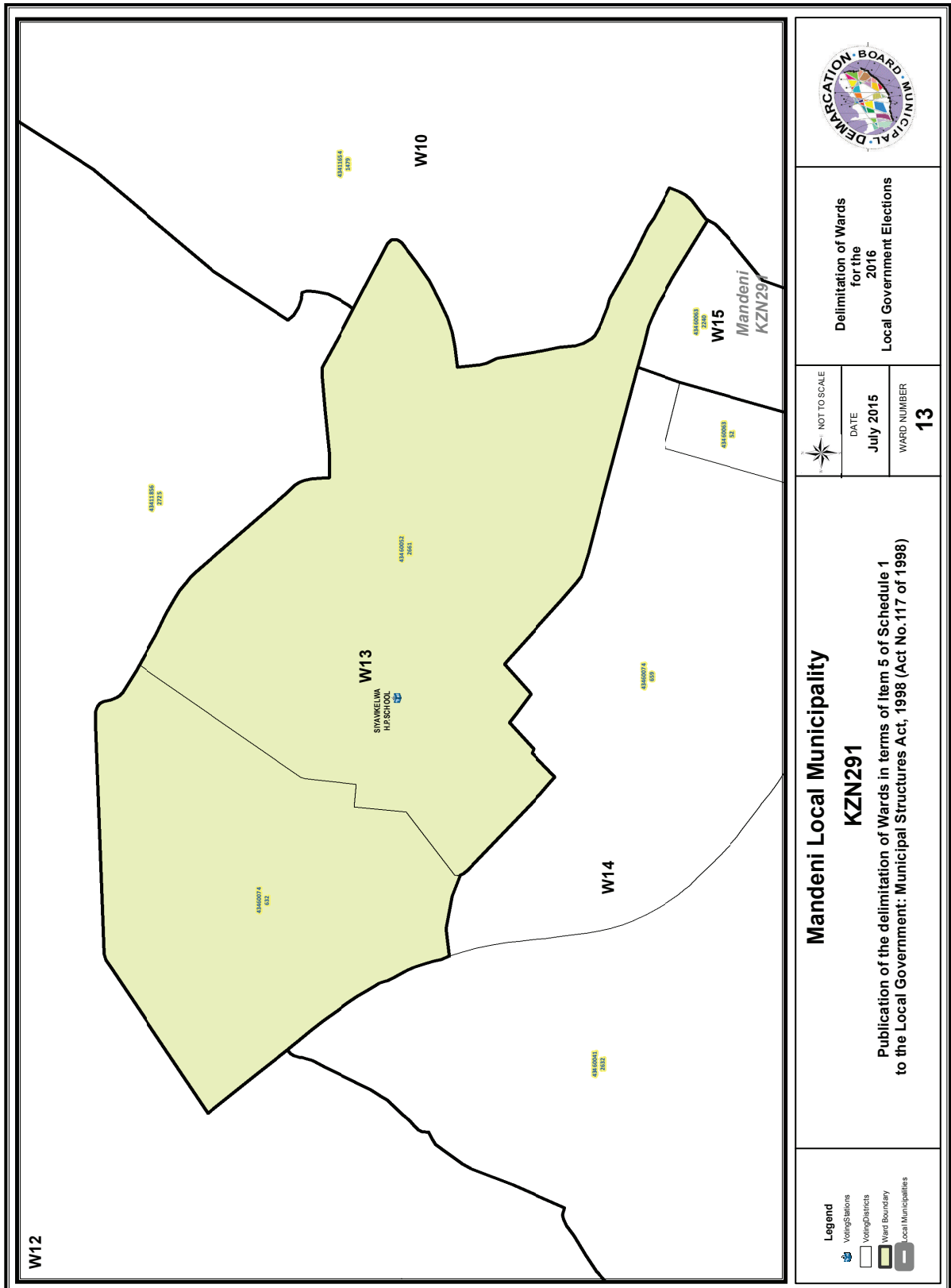


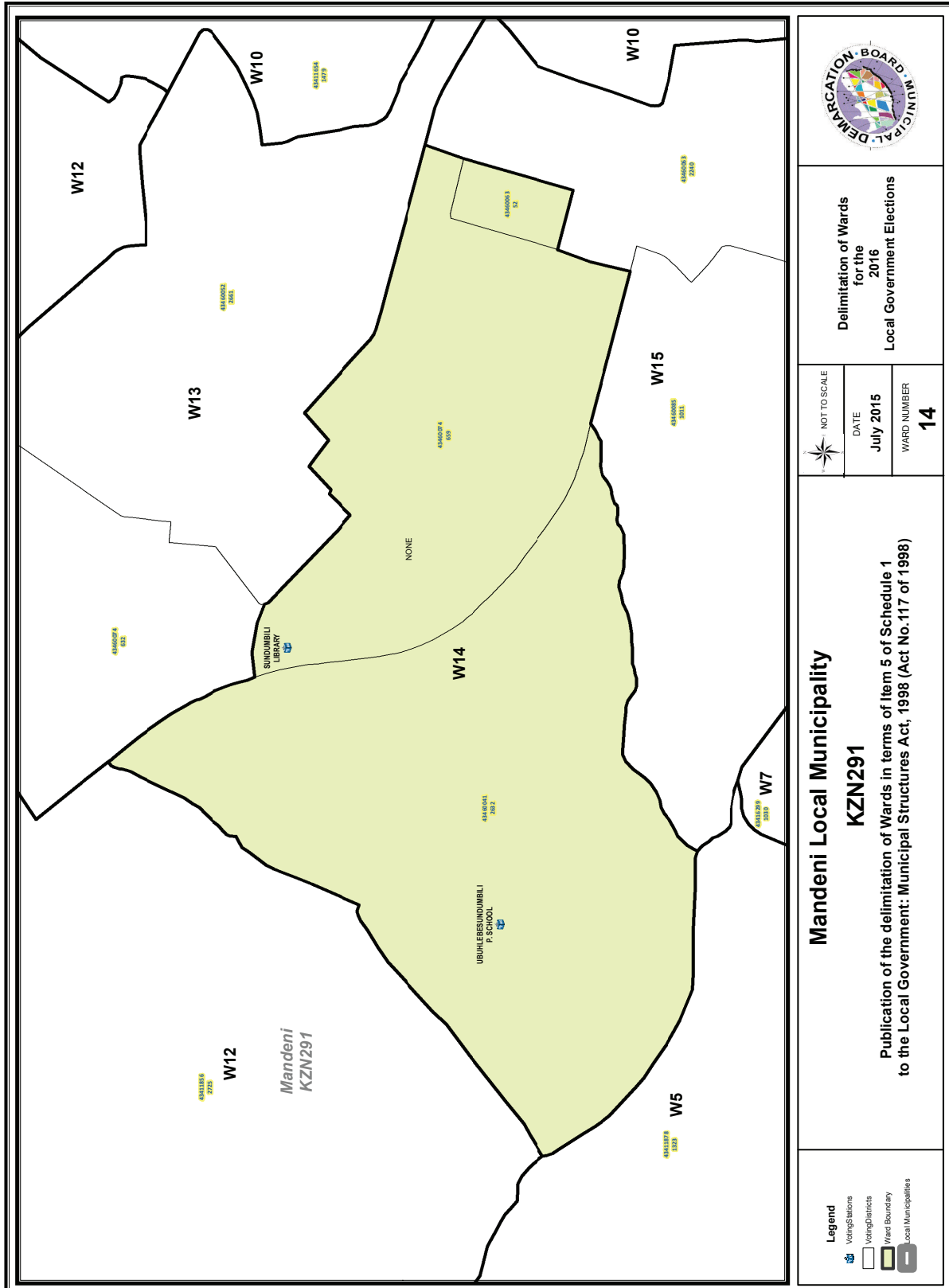


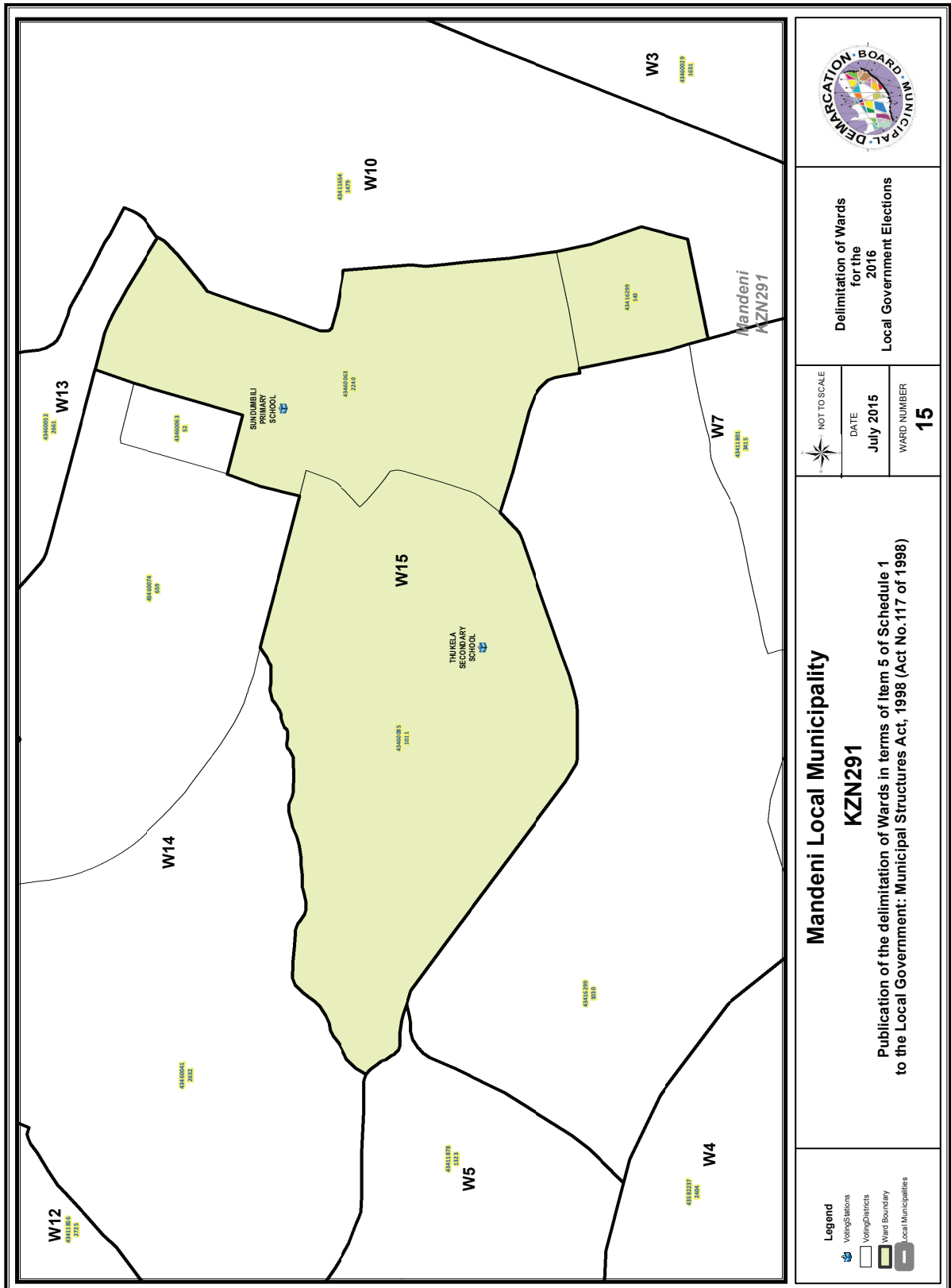


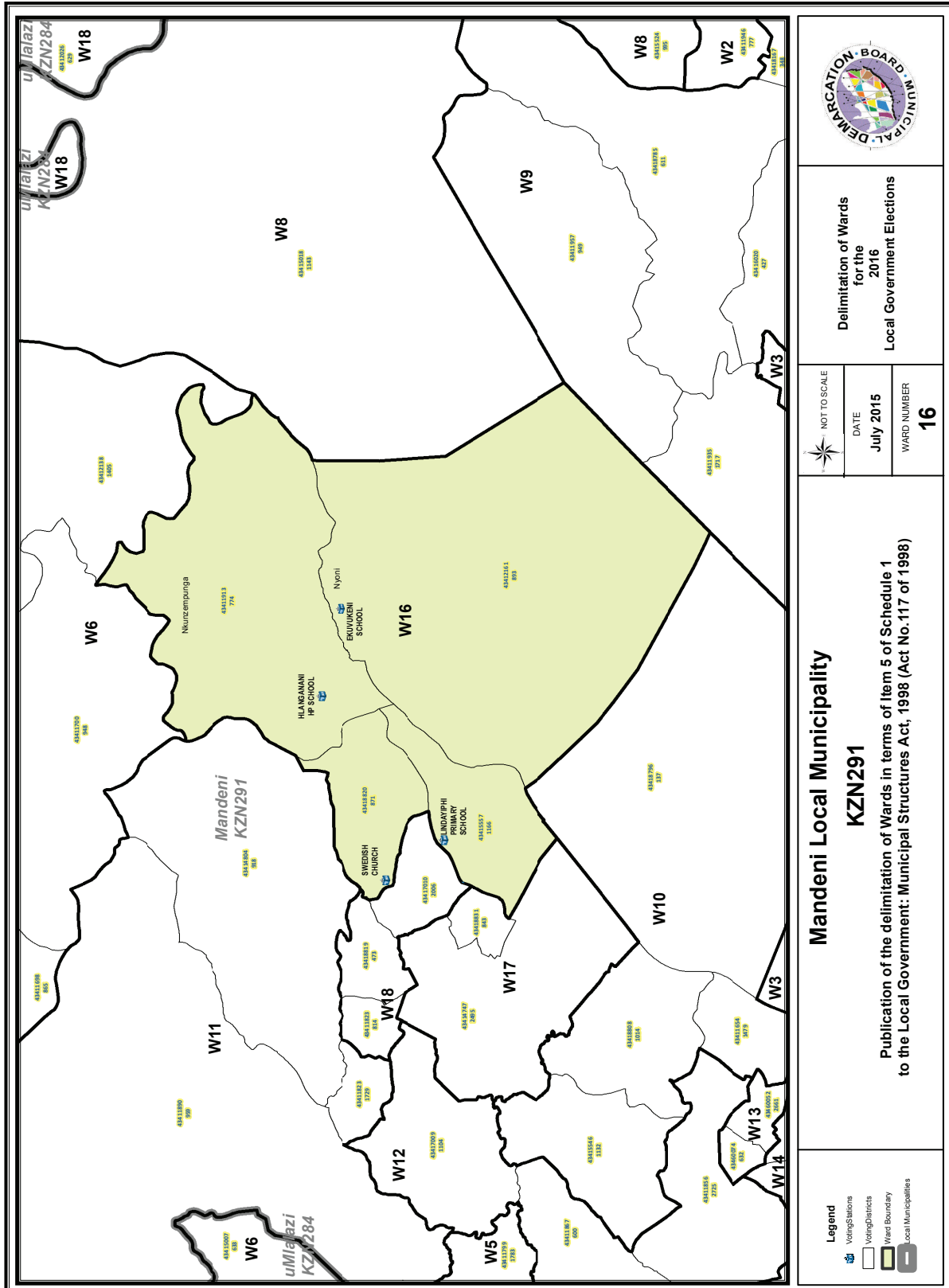


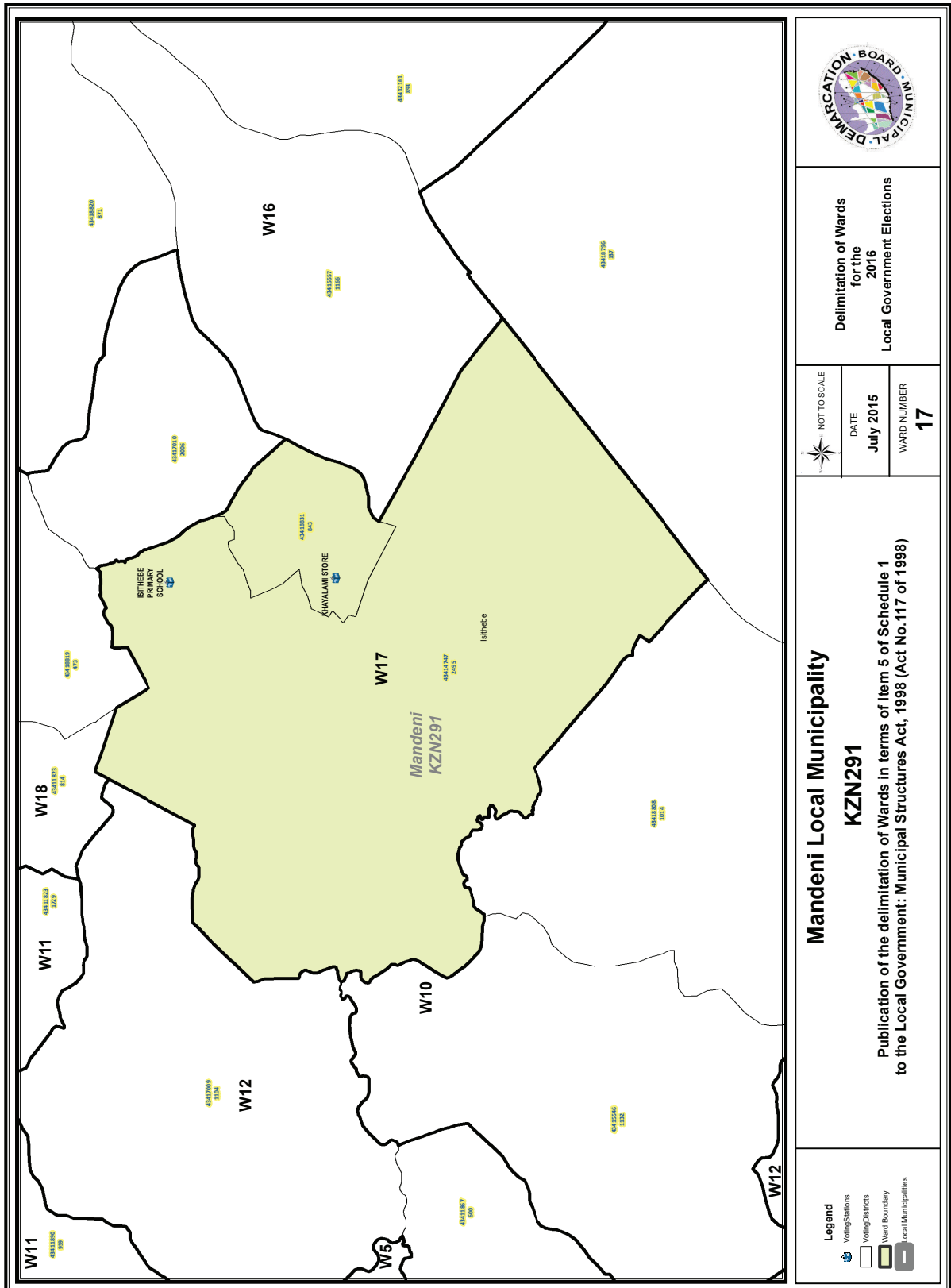


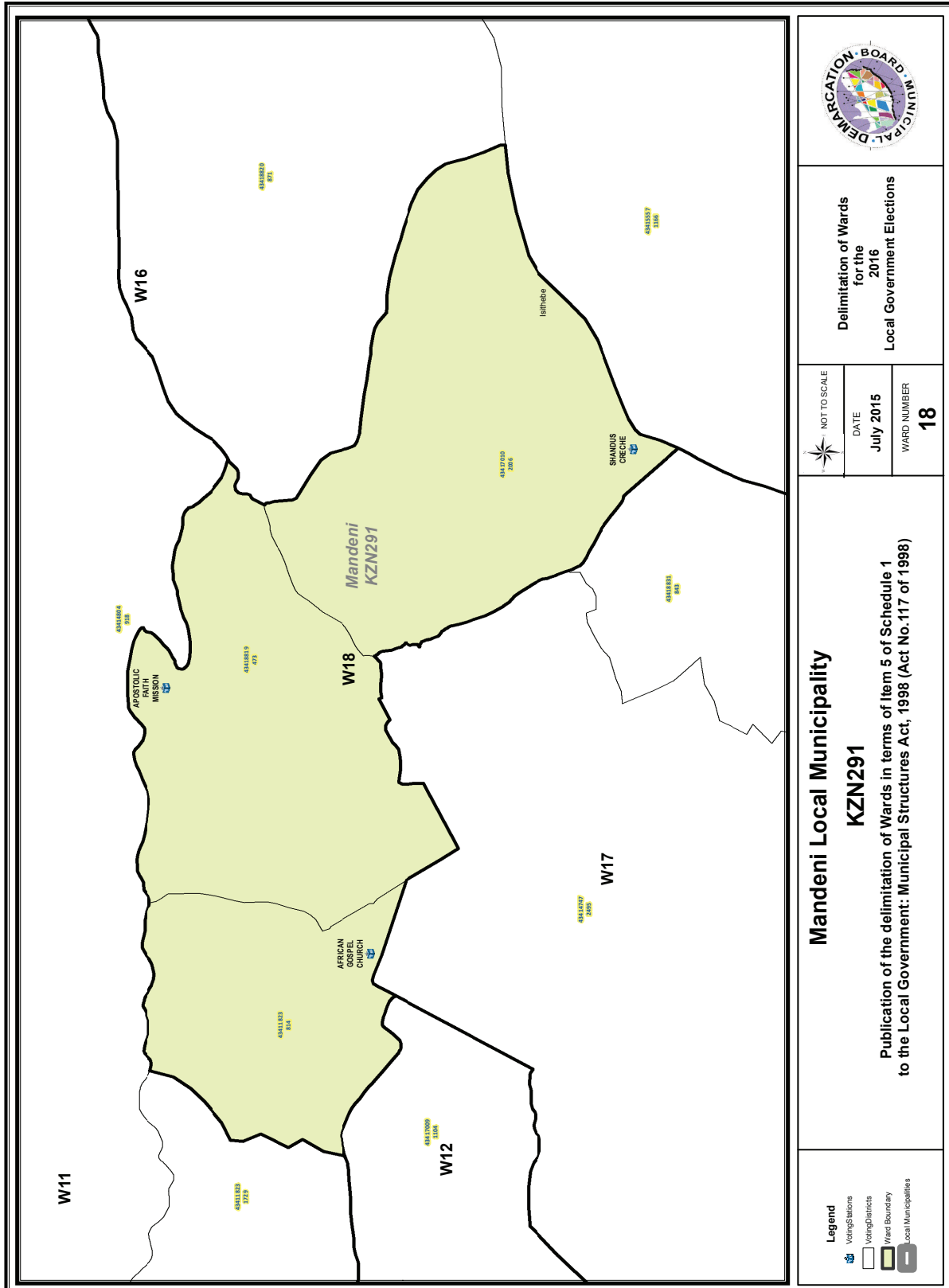












FORM/VORM MDB5

WARD DELIMITATION/

WYKSAFBAKENING

**OBJECTION IN TERMS OF ITEM 5(2) OF SCHEDULE 1 TO THE LOCAL GOVERNMENT:
MUNICIPAL STRUCTURES ACT, 1998**

**BESWAAR INGEVOLGE ITEM 5(2) VAN BYLAE 1 VAN DIE WET OP PLAASLIKE REGERING:
MUNISIPALE STRUKTURE, 1998**

Name of municipality/ Naam van Munisipaliteit :

Code/Kode :

**Name of aggrieved person/institution/Naam van beswaarde persoon/instelling :
.....**

**Contact person in case of an institution/ Kontak persoon in geval van 'n instelling:
.....**

Address/Adres:

Tel. number/ Tel. nommer:.....Cell number/ Selfoonnommer:

Email address:

PLEASE USE ADDITIONAL PAGE SHOULD THE ALTERNATIVE PROPOSALS BE MORE THAN THE FOLLOWING SPACE AVAILABLE.

I request the Municipal Demarcation Board to consider the following alternative proposals/ Ek versoek die Munisipale Afbakeningsraad om die volgende alternatiewe voorstelle te oorweeg:

Ward number/ Wyk nommer	The ward should comprise of the following voting districts (Provide voting district number and the number of voters in brackets e.g. VD1123456(1500)+VD345678(2500)=4000)/ Die wyk moet bestaan uit die volgende stemdistrikte: (Voorsien die stemdistriknommer en die getal geregistreerde kiesers as volg VD1123456(1500)+VD345678(2500)=4000)	Motivation /Motivering

I confirm that/ Ek bevestig dat:

- each cluster of voting districts form a contiguous ward/ die saamgevoegde stemdistrikte vorm 'n aaneenlopende wyk;
- the number of voters in each ward fall within the minimum and maximum of voters allowed per ward/ die getal kiesers in elke wyk is binne die minimum en maksimum getal wat per wyk toegelaat word;
- the proposed ward boundaries comply, in general, with the criteria/ die voorgestelde wyke voldoen in die algemeen aan die kriteria.

SIGNATURE

NAME AND SURNAME

DATE

IMPORTANT

Information

from Government Printing Works

Dear Valued Customers,

Government Printing Works has implemented rules for completing and submitting the electronic Adobe Forms when you, the customer, submits your notice request.

Please take note of these guidelines when completing your form.

GPW Business Rules

1. No hand written notices will be accepted for processing, this includes Adobe forms which have been completed by hand.
2. Notices can only be submitted in Adobe electronic form format to the email submission address submit.egazette@gpw.gov.za. This means that any notice submissions not on an Adobe electronic form that are submitted to this mailbox will be **rejected**. National or Provincial gazette notices, where the Z95 or Z95Prov must be an Adobe form but the notice content (body) will be an attachment.
3. Notices brought into GPW by "walk-in" customers on electronic media can only be submitted in Adobe electronic form format. This means that any notice submissions not on an Adobe electronic form that are submitted by the customer on electronic media will be **rejected**. National or Provincial gazette notices, where the Z95 or Z95Prov must be an Adobe form but the notice content (body) will be an attachment.
4. All customers who walk in to GPW that wish to submit a notice that is not on an electronic Adobe form will be routed to the Contact Centre where the customer will be taken through the completion of the form by a GPW representative. Where a customer walks into GPW with a stack of hard copy notices delivered by a messenger on behalf of a newspaper the messenger must be referred back to the sender as the submission does not adhere to the submission rules.
5. All notice submissions that do not comply with point 2 will be charged full price for the notice submission.
6. The current cut-off of all Gazette's remains unchanged for all channels. (Refer to the GPW website for submission deadlines – www.gpwonline.co.za)
7. Incorrectly completed forms and notices submitted in the wrong format will be rejected to the customer to be corrected and resubmitted. Assistance will be available through the Contact Centre should help be required when completing the forms. (012-748 6200 or email info.egazette@gpw.gov.za)
8. All re-submissions by customers will be subject to the above cut-off times.
9. All submissions and re-submissions that miss the cut-off will be rejected to the customer to be submitted with a new publication date.
10. Information on forms will be taken as the primary source of the notice to be published. Any instructions that are on the email body or covering letter that contradicts the notice form content will be ignored.

You are therefore advised that effective from **Monday, 18 May 2015** should you not comply with our new rules of engagement, all notice requests will be rejected by our new system.

Furthermore, the fax number **012- 748 6030** will also be **discontinued** from this date and customers will only be able to submit notice requests through the email address submit.egazette@gpw.gov.za.

