

**NORTH WEST
NOORDWES
EXTRAORDINARY
PROVINCIAL GAZETTE
BUITENGEWONE
PROVINSIALE KOERANT**

Vol. 253

20 **MAY**
MEI 2010

No. 6778

IMPORTANT NOTICE

The Government Printing Works will not be held responsible for faxed documents not received due to errors on the fax machine or faxes received which are unclear or incomplete. Please be advised that an "OK" slip, received from a fax machine, will not be accepted as proof that documents were received by the GPW for printing. If documents are faxed to the GPW it will be the sender's responsibility to phone and confirm that the documents were received in good order.

Furthermore the Government Printing Works will also not be held responsible for cancellations and amendments which have not been done on original documents received from clients.

CONTENTS • INHOUD

<i>No.</i>	<i>Page No.</i>	<i>Gazette No.</i>
PREMIER'S NOTICE • PREMIERSKENNISGEWING		
3 Road Ordinance (22/1957): Construction of Provincial Road P115/1 (Western Bypass) a link road from the N4 to Sun City. Bojanala District–Rustenburg	3	6778
3 Pad Ordonnansie (22/1957): Konstruksie van Provinsiale Pad P115/1 (Westelike Verbypad) 'n verbindingspad vanaf die N4 na Sun City. Bojanala District–Rustenburg	3	6776

PREMIER'S NOTICE PREMIERSKENNISGEWING

No. 3

20 May 2010

CONSTRUCTION OF PROVINCIAL ROAD P 115/1 (WESTERN BYPASS) A LINK ROAD FROM THE N4 TO SUN CITY. BOJANALA DISTRICT - RUSTENBURG.

In terms of section 3 and section 5 of the Road Ordinance, 22 of 1957, the Premier hereby declares that Provincial Road P 115/1 (Western Bypass) with varying widths, shall exist over the Farms Rietvly 271JQ, Goedgedacht 267JQ, Morgenzon 261JQ, Boekenhoutfontein 260JQ and Beerfontein 263JQ, as indicated on the subjoined sketch plans which also indicates the general direction and situation of the road with appropriate co-ordinates of boundary beacons.

In terms of section 48 of the said Ordinance it is hereby declared that access roads with varying widths shall exist over the farms Rietvly 271JQ, Boekenhoutfontein 260JQ and Beerfontein 263JQ as indicated on the subjoined sketch plan which also indicates the general directions and situations of the access roads with appropriate co-ordinates of boundary beacons.

In terms of section 7(1) of the Advertising on Roads and Ribbon Development Act, 1940 (Act 21 of 1940) the road described in the subjoined Schedule shall, as from the date hereof, be a building restriction road for the purpose of the said Act.

The requirements in terms of section 5A(3) of the said Ordinance have been complied with and the land taken up has physically been demarcated. No proclaimed mining land is affected. Plan NWTR 129/07AFR/KP/01/0 indicating the land taken up by the roads, is available for inspection by any interested person at the office of the Director, Department Public Works, Roads and Transport, Waterval Avenue, Rustenburg.

Resolution: R20/2010 of 29 April 2010
Reference: R42-10/4/2/4 – P 115/1 (Western Bypass)

No. 3

20 Mei 2010

KONSTRUKSIE VAN PROVINSIALE PAD P115/1 (WESTELIKE VERBYPAD) 'n VERBINDINGSPAD VANAF DIE N4 NA SUN CITY. BOJANALA DISTRICT - RUSTENBURG

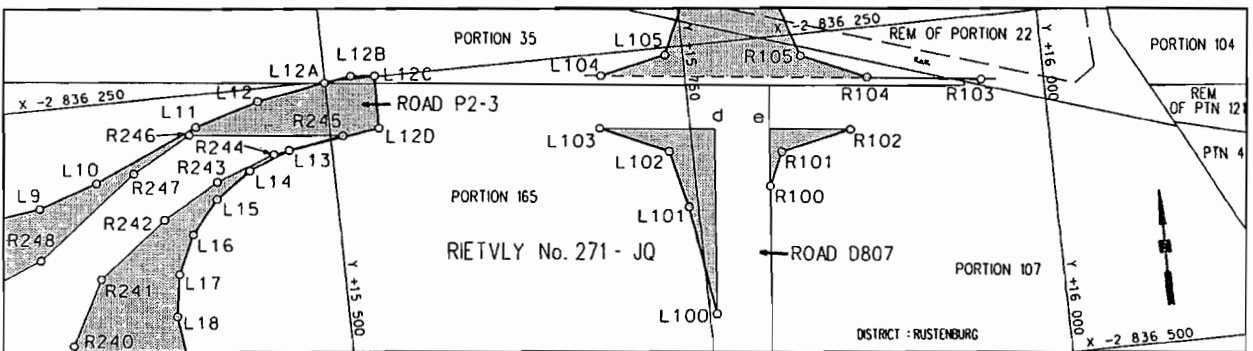
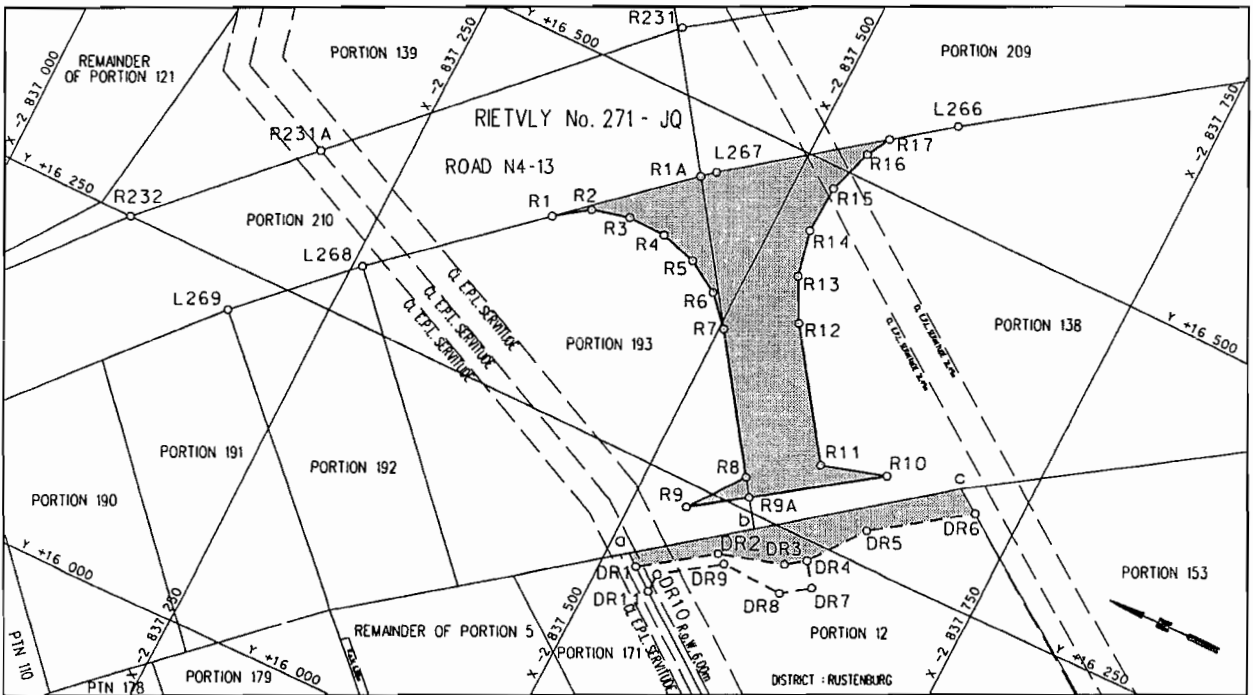
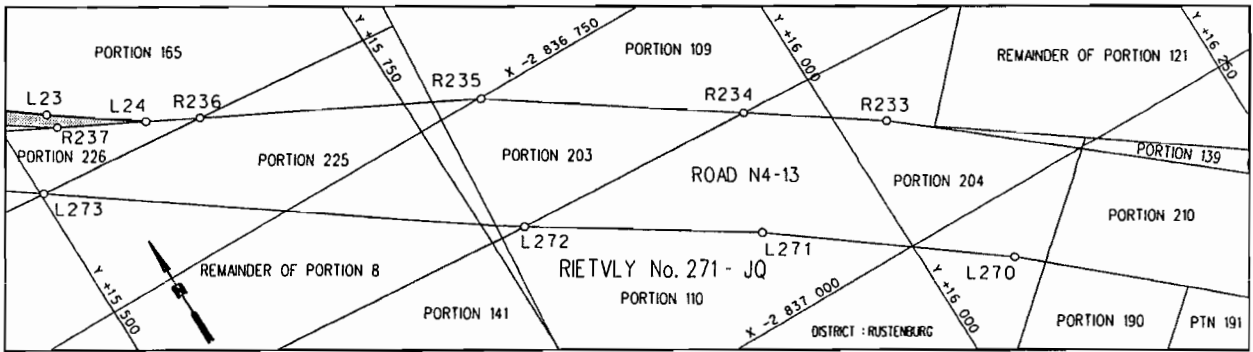
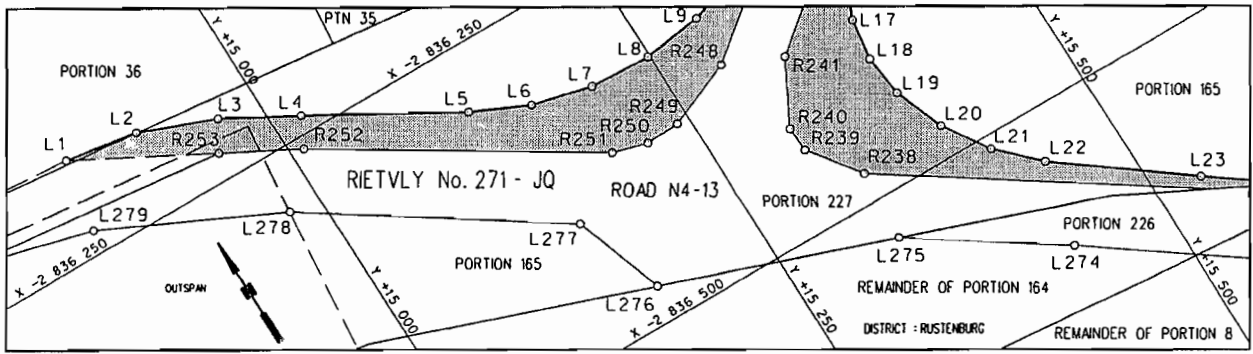
Kragtens artikel 3 en 5 van die Pad Ordonnansie, 22 van 1957, verklaar die Premier hierby dat Provinsiale Pad P 115/1 (Westelike Verbypad) gebou word met wissellende breedtes oor die plase, Rietvly 271JQ, Goedgedacht 267JQ, Morgenzon 261JQ, Boekenhoutfontein 260JQ en Beerfontein 263 JQ, soos aangedui op bygaande sketsplan wat ook die algemene rigting en ligging van die pad met toepaslike koördinate van grensbakens aandui.

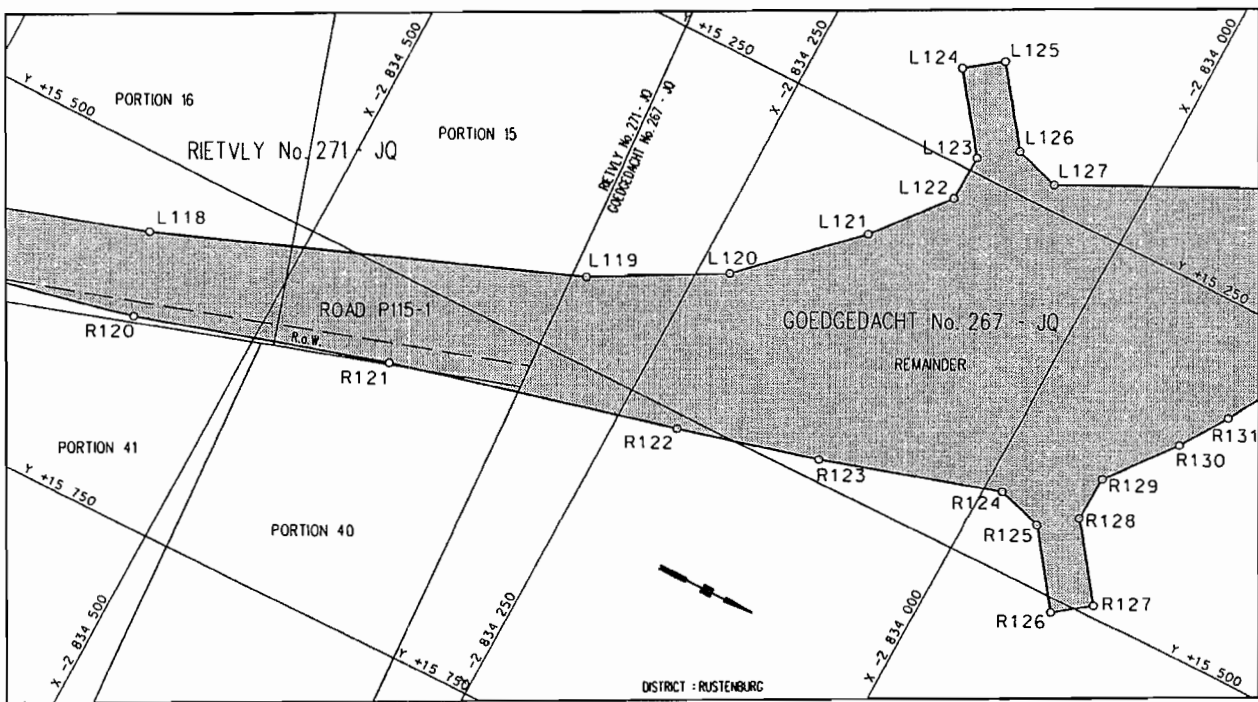
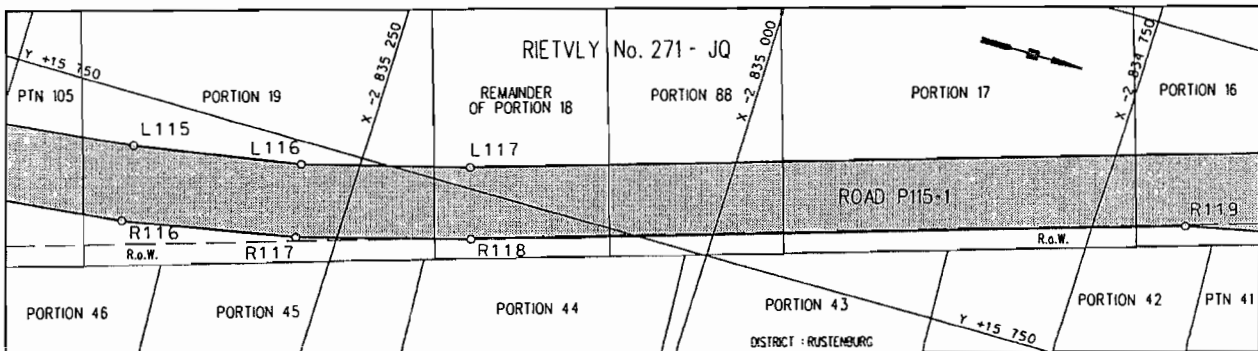
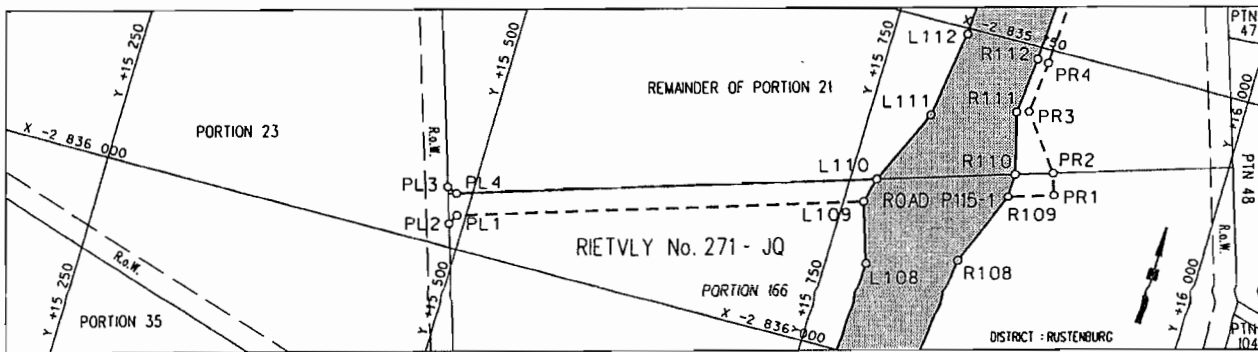
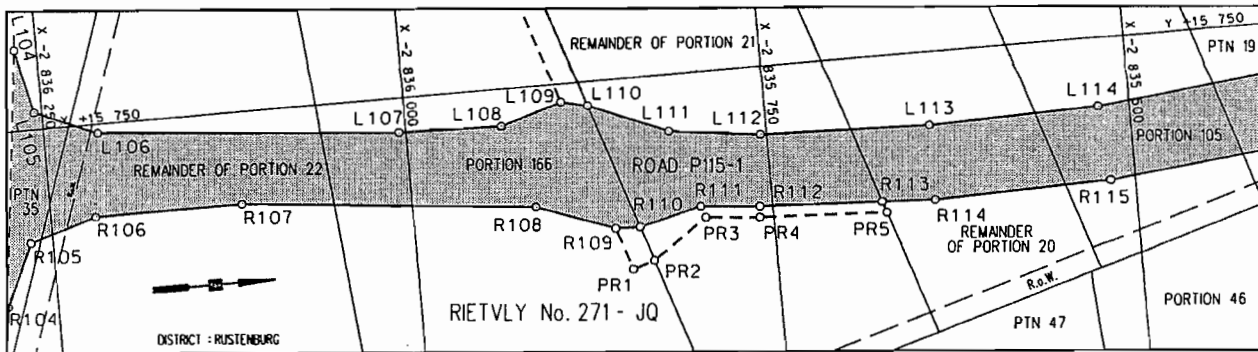
Kragtens artikel 48 van gemelde Ordonnansie, word hierby verklaar dat toegangspaaie met wissellende breedtes, bestaan oor die plase, Rietvly 271JQ, Boekenhoutfontein 260JQ en Beerfontein 263JQ soos aangedui op bygaande sketsplan wat ook die algemene rigting en ligging van die toegangspaaie met toepaslike koördinate van grensbakens aandui.

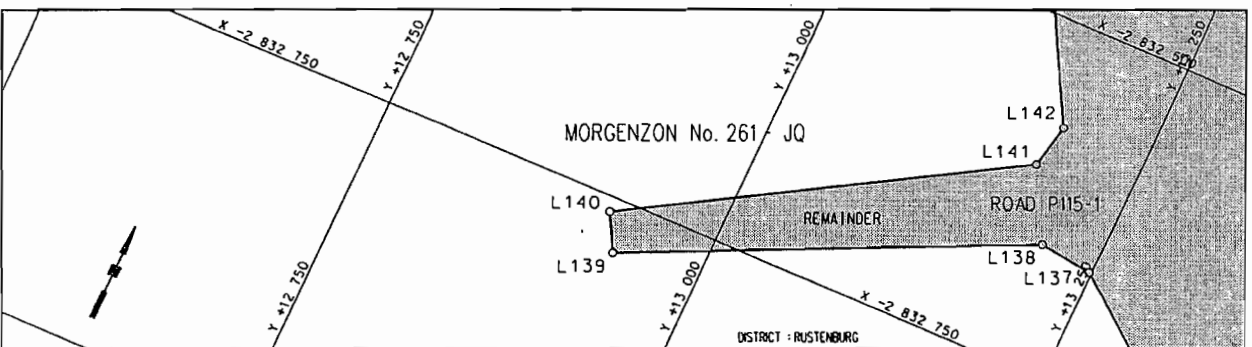
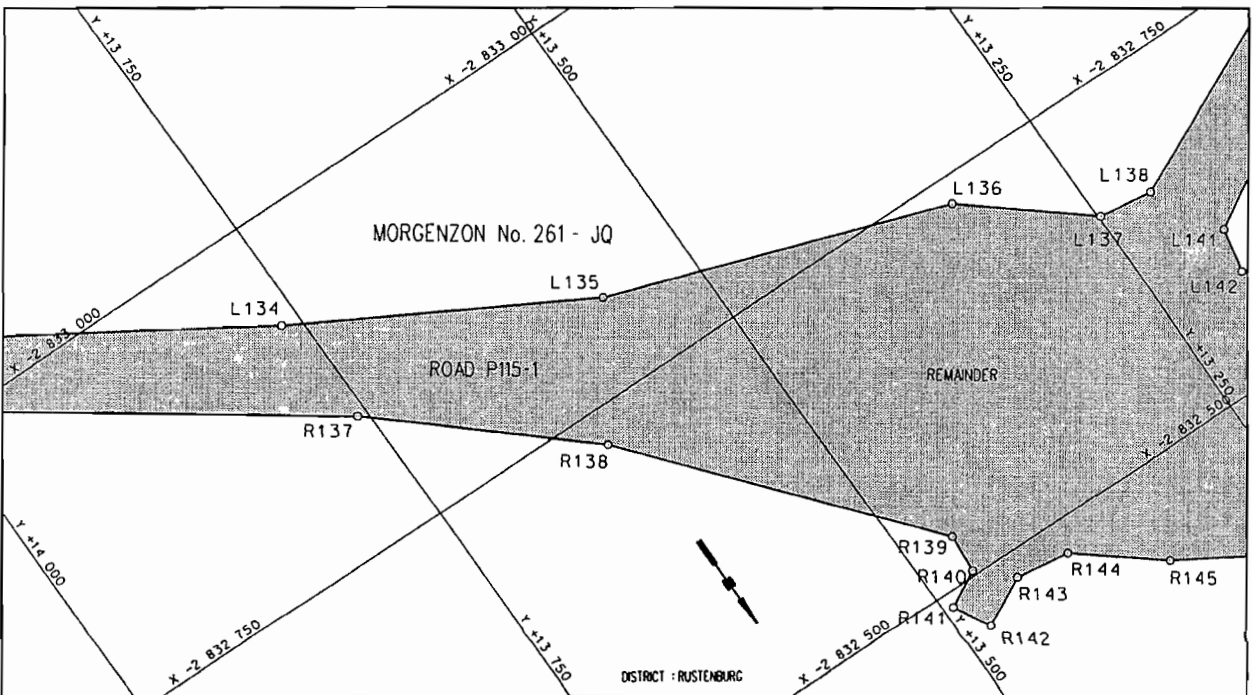
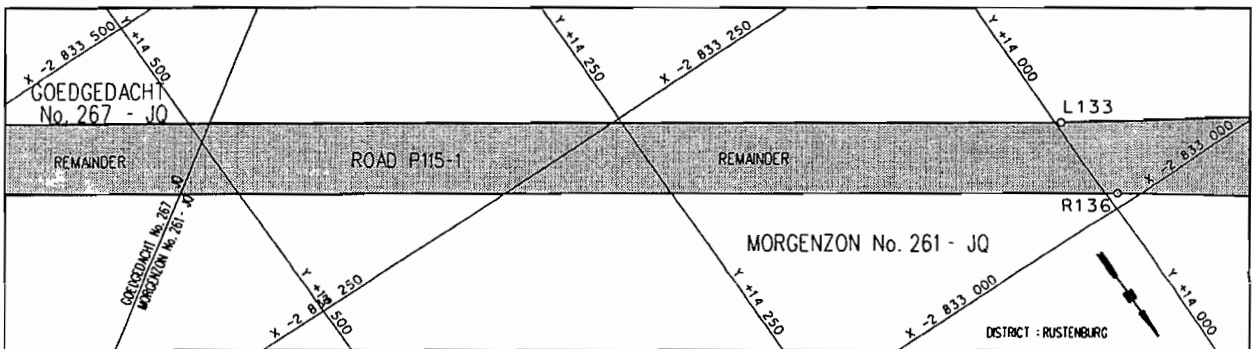
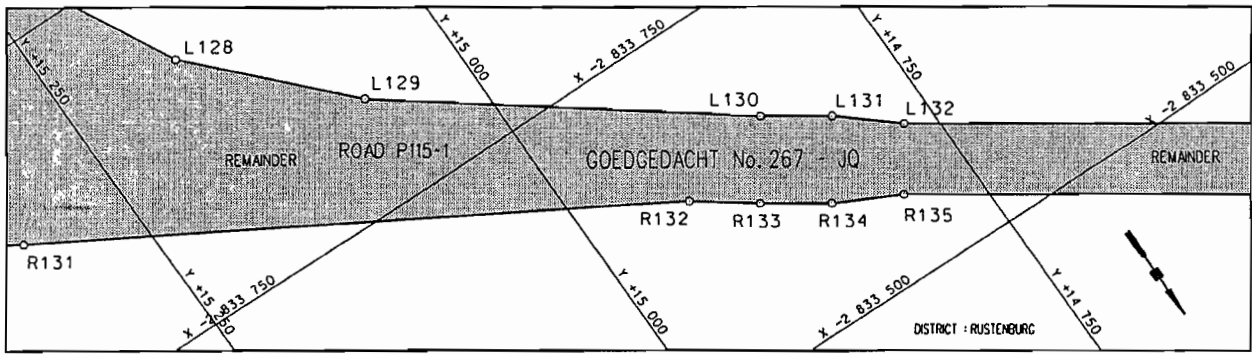
In terme van Artikel 7(1) van die Wet op Adverteer langs en Toeboou van Paaie, 1940 (Wet 21 van 1940) die pad soos beskryf op meegaande skedule as boubeperkings pad verklaar word met ingang van hierdie datum, met die oog op die vermelde Wet.

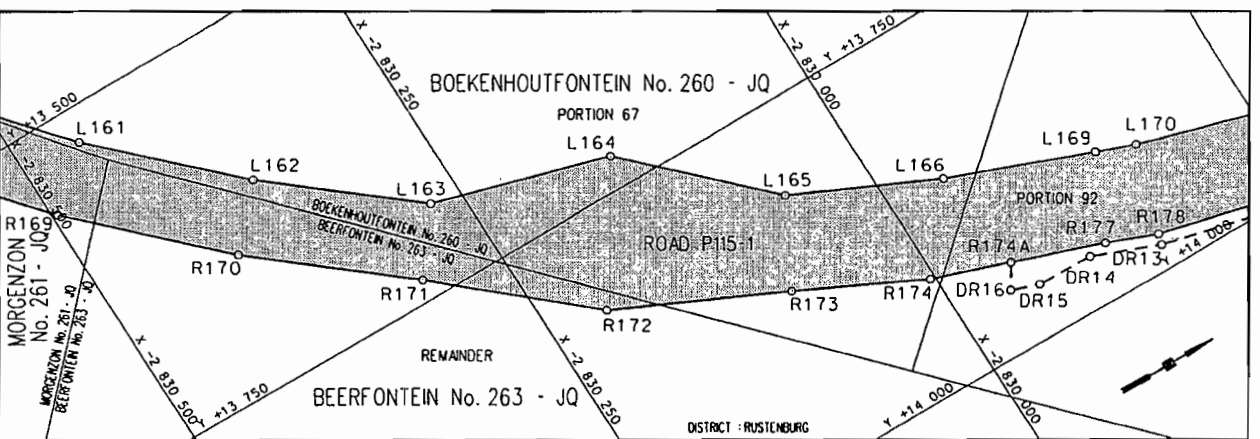
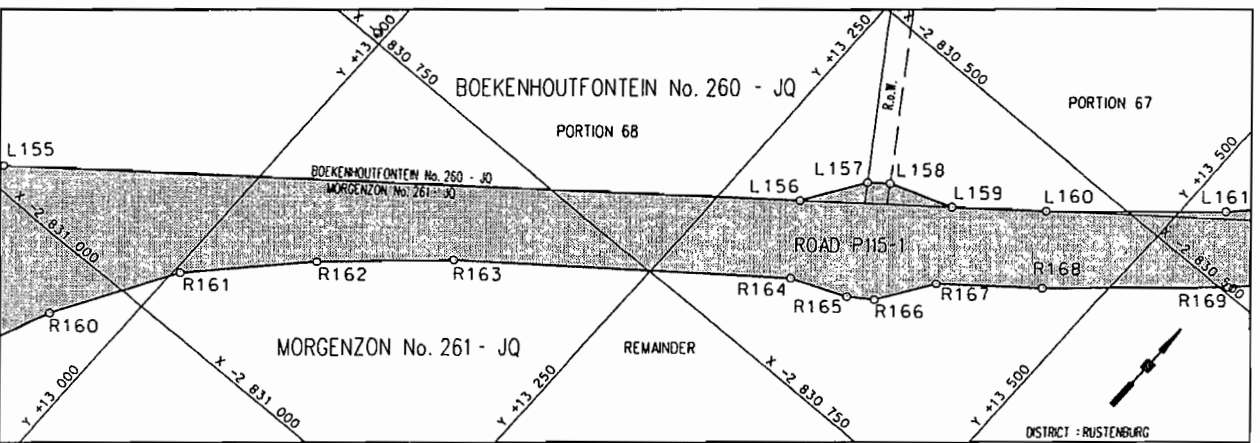
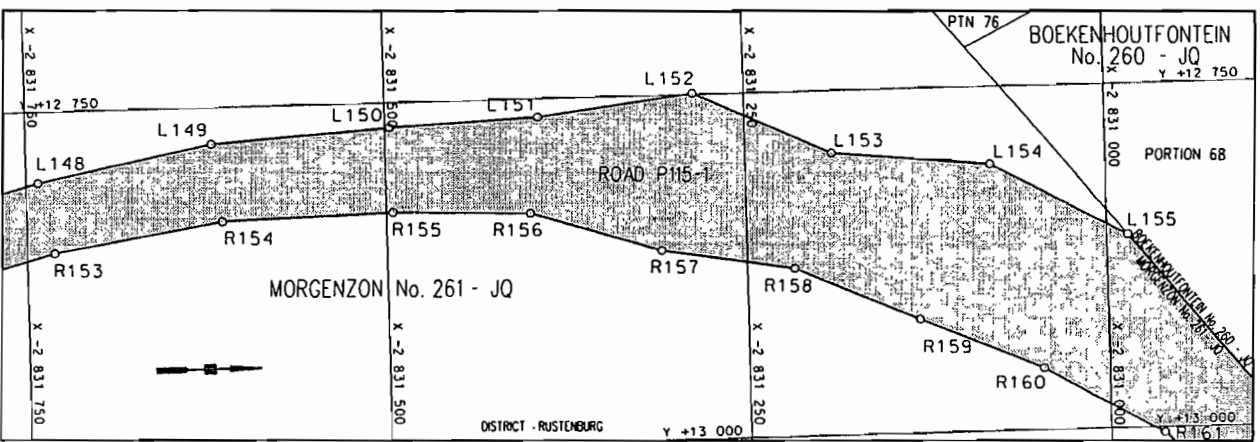
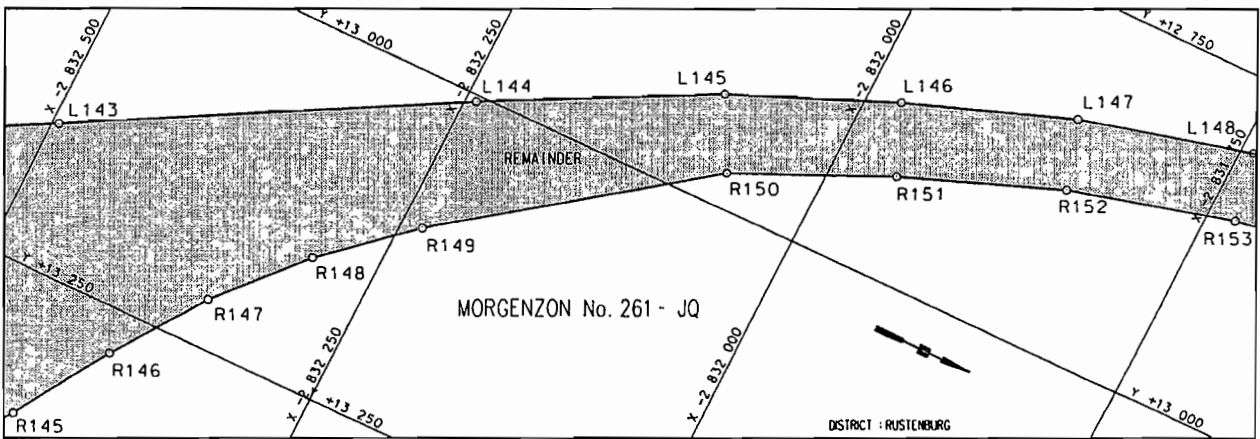
Met verwysing na artikel 5A(3) van gemelde Ordonnansie word hierby verklaar dat die grond wat deur die paaie in beslag geneem is, fisies afgebaken is en dat plan No NWTR/129/07AFR/KP/01/0 wat grond, wat deur die pad reelings in beslag geneem is aandui, by die kantoor van die Direkteur, Departement Openbare Werke, Paaie en Vervoer, Watervallaan, Rustenburg, ter insae vir enige belanghebbende persoon beskikbaar is.

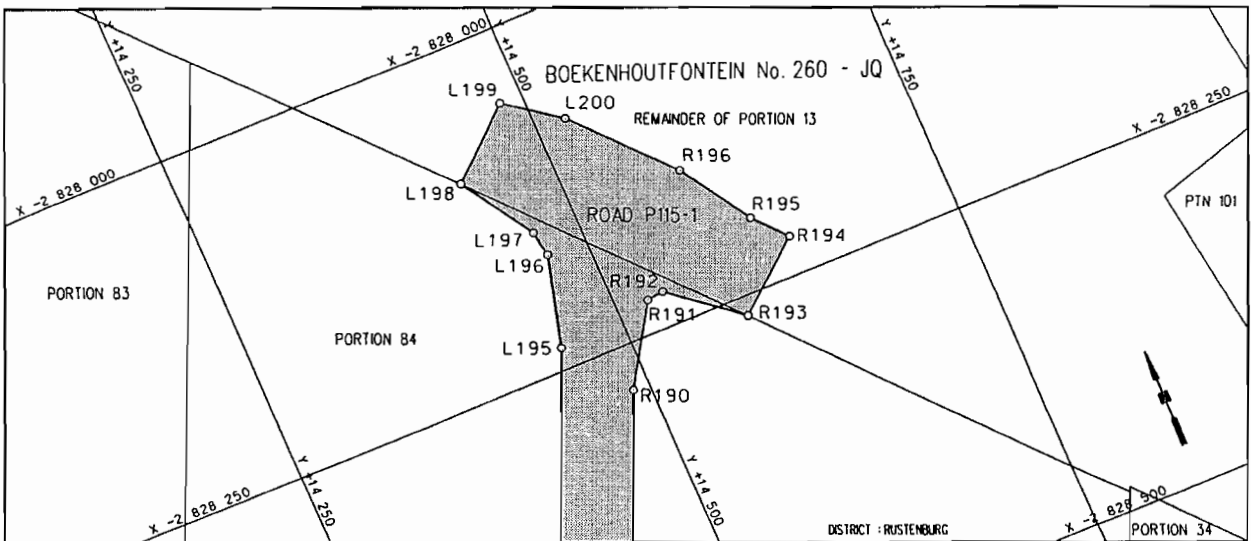
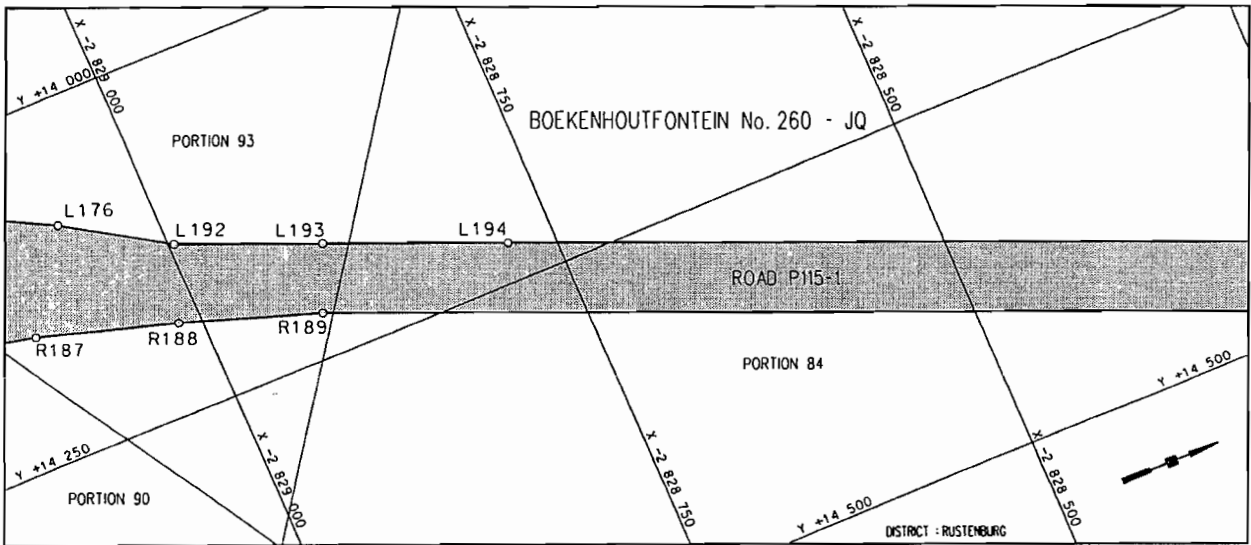
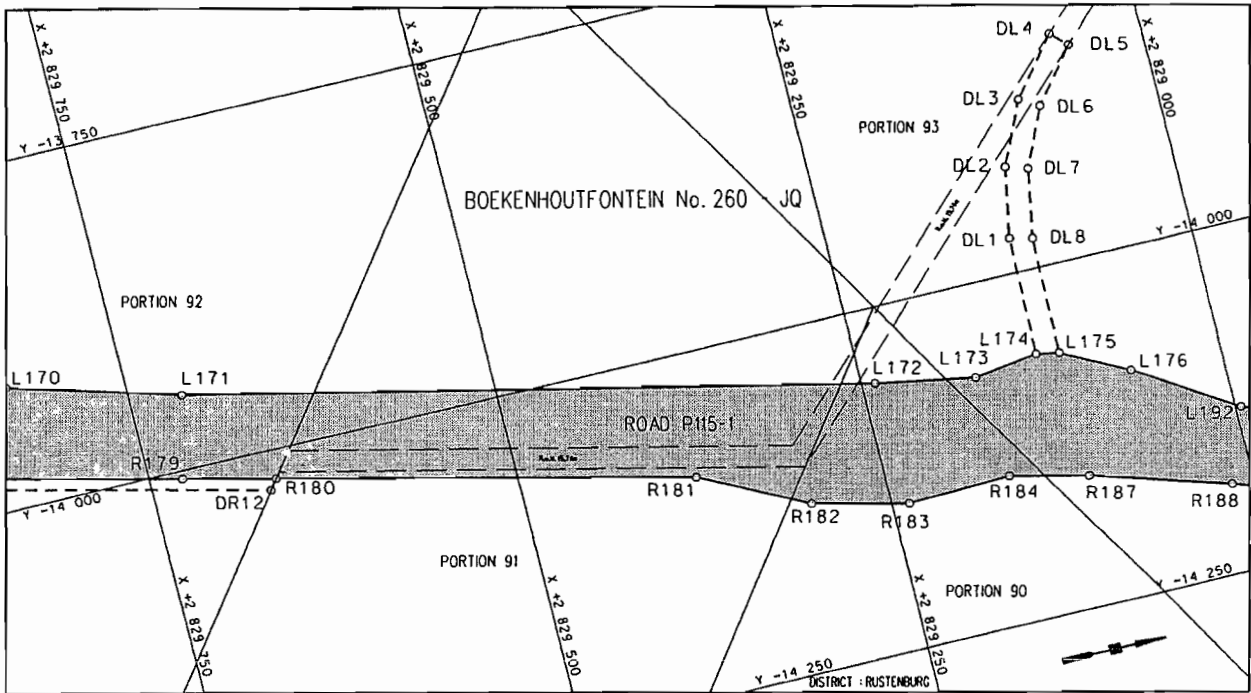
UK Besluit · R20/2010 van 29 April 2010
Verwysing: R42-10/4/2/4- P 115/1 (Westelike Verbypad).











REFERENCE / VERWYSINGS

**ROAD PROCLAMATION
PADPROKLAMASIE**

**ROAD DECLARED
PAD VERKLAAR**



**ROAD WIDENED TO VARYING WIDTHS
PAD WISSELEND VERBREED**

**EXISTING ROAD
BESTAANDE PAD**



**4B.4m WIDE
4B.4m WYD**

The Figures : L1 - L12, L12A, L12B, L12C, L12D, L13 - L24, R237 - L253,
Die Figure : and R1 - R9, R9A, R10-R17, L267, R1A and L103, d. L100-L102 and
e. R102, R101, R100 and L104-L176, L192-L200, R196-R187,
R184-R177, R174A, R174-R103 and a, b, c, DR6, DR5, DR4, DR3, DR2, DR1

REPRESENTS THE PROCLAMATION OF THE PORTIONS CONCERNED OF THE ROAD OVER
THE FARMS RIETVLY No. 271-JQ, BOEKENHOUTFONTEIN No. 260-JQ MORGENZON No. 261-JQ,
GOEDGEDACHT No. 267-JQ AND BEERFONTEIN No. 259-JQ AS INTENDED BY THE PUBLICATION
THEREOF IN THE PROVINCIAL GAZETTE AND SHOWN IN DETAIL ON PLANS:

VERTEENWOORDIG DIE PROKLAMASIE VAN DIE BETROKKE GEDEELTES VAN DIE PAD
OOR DIE PLASE RIETVLY No. 271-JQ, BOEKENHOUTFONTEIN No. 260-JQ, MORGENZON No. 261-JQ,
GOEDGEDACHT No. 267-JQ EN BEERFONTEIN No. 259-JQ SOOS BEDOEL BY DIE AFKONDIGING
DAAR VAN IN DIE PROVINSIALE KOERANT EN DIE DETAIL GETOON OP PLANNE:

Resolution Number : R20/2010
Resolusie Nommer : R20/2010

Dated : 29 APRIL 2010
Datum : 29 APRIL 2010

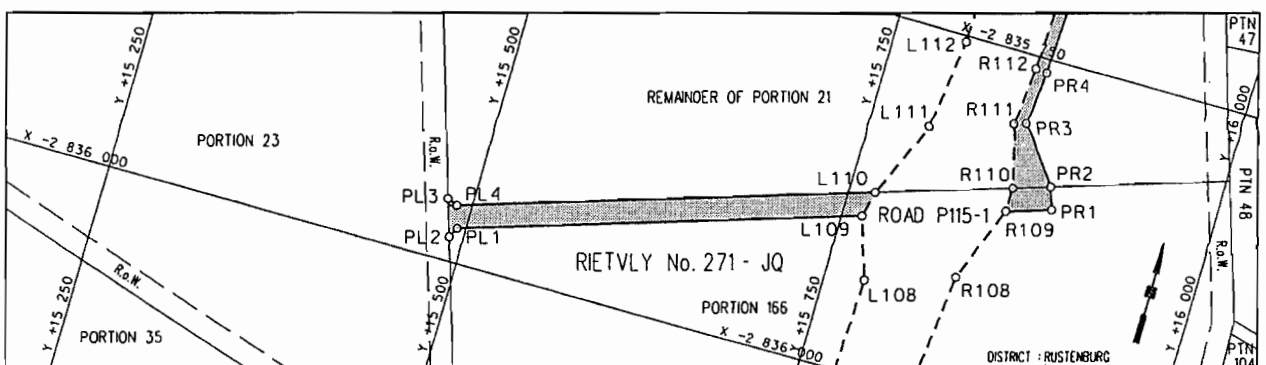
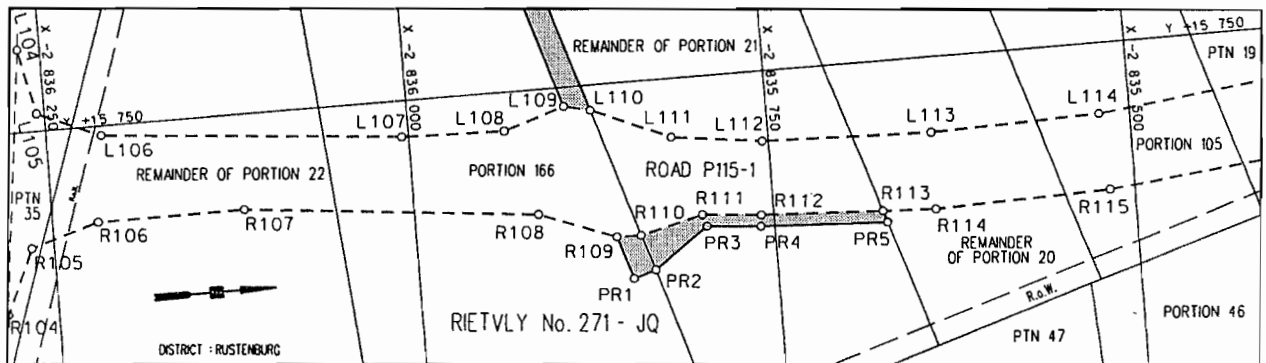
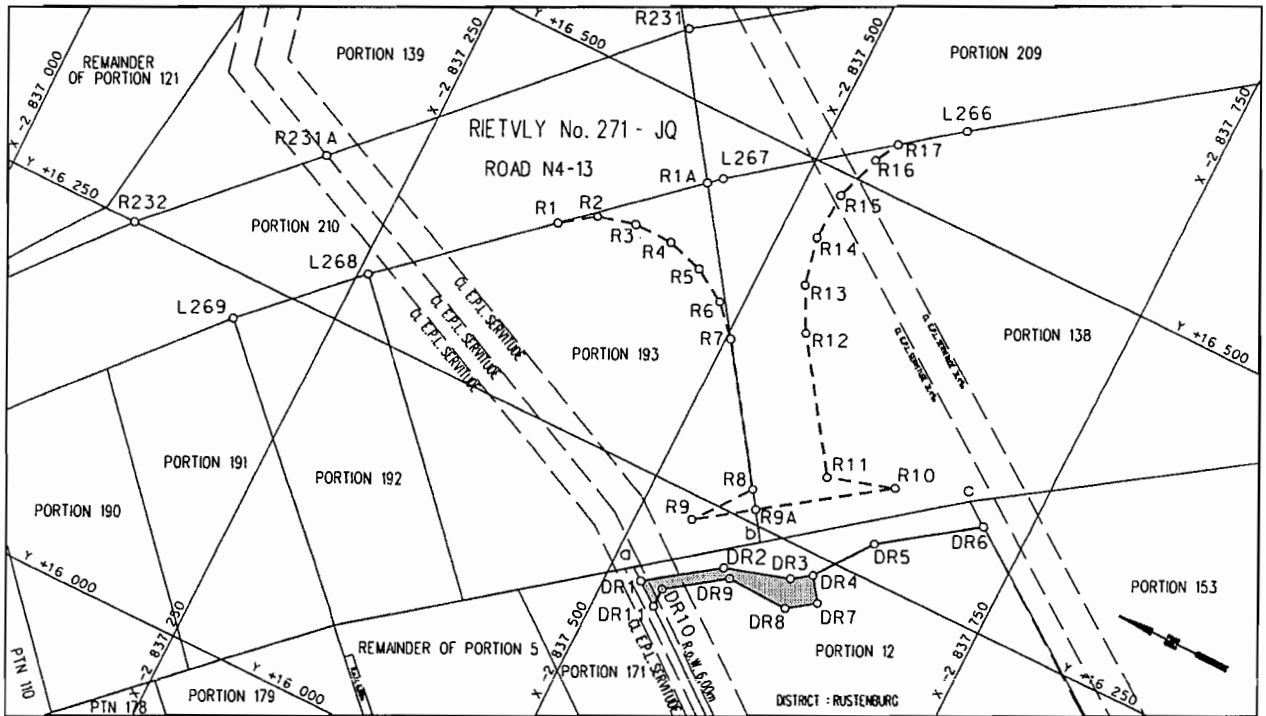
FILE NO. / BUNDEL NR: R42-10/4/2/4-P115/1 (Western Bypass)

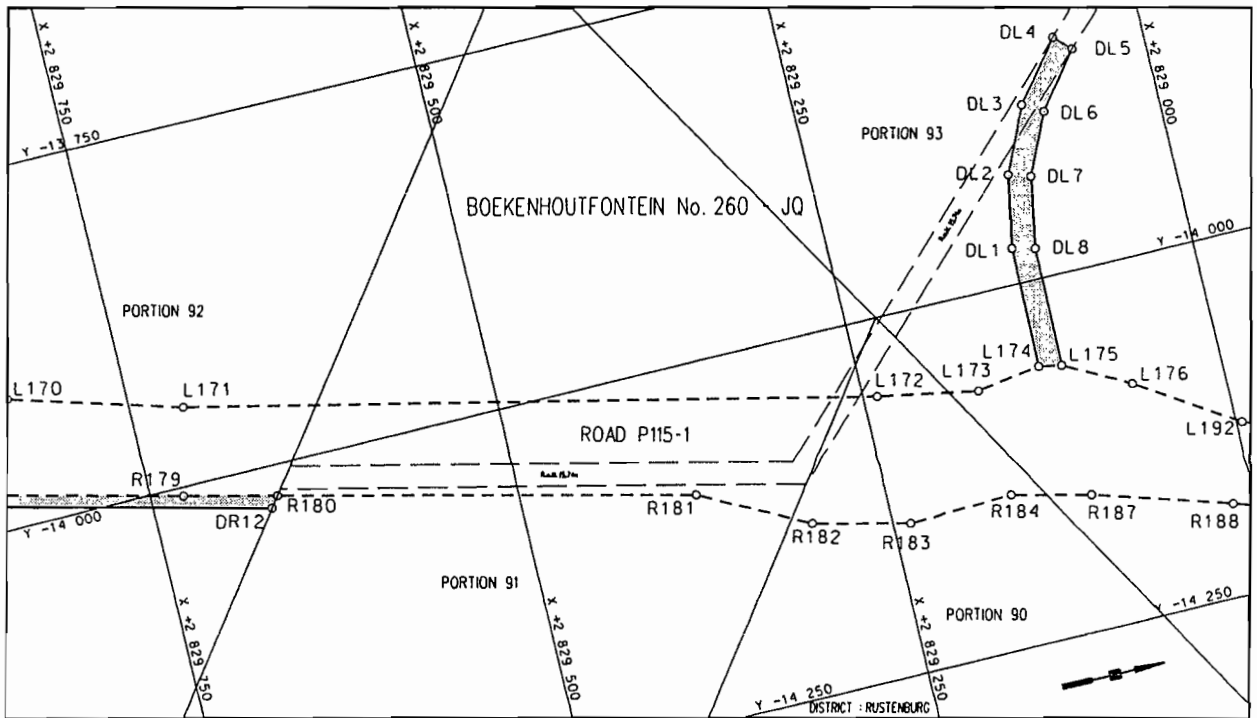
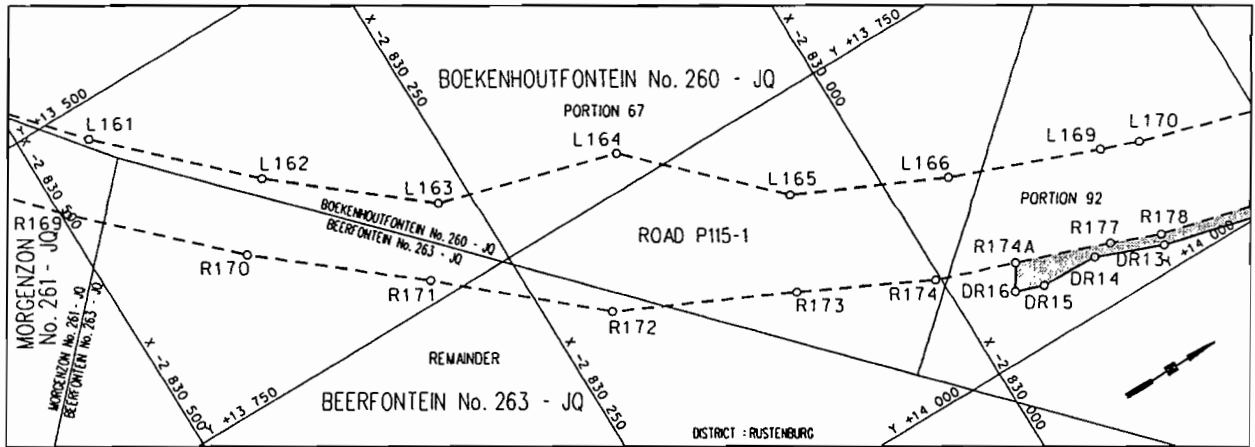
CO-ORDINATE LIST/KOORDINAATLYS WG 29° CONST./KONST. Y = 0.00 X = 2 000 000.00

L1	-14863.624	836179.065	L117	-15735.315	835176.534	L162	-13611.377	830367.383
L2	-14915.974	836187.523	L118	-15552.423	834600.197	L163	-13690.727	830271.916
L3	-14970.029	836208.785	L119	-15441.713	834316.419	L164	-13726.324	830147.024
L4	-15020.619	836237.191	L120	-15393.285	834228.854	L165	-13814.974	830058.362
L5	-15121.107	836295.858	L121	-15323.776	834156.868	L166	-13862.418	829957.880
L6	-15161.281	836314.425	L122	-15273.049	834116.550	L169	-13901.022	829857.296
L7	-15204.251	836325.025	L123	-15240.119	834115.990	L170	-13910.711	829831.314
L8	-15248.451	836327.272	L124	-15188.210	834154.491	L171	-13945.745	829713.400
L9	-15292.274	836321.085	L125	-15170.356	834130.382	L172	-14053.933	829240.410
L10	-15334.126	836306.688	L126	-15222.346	834091.881	L173	-14066.800	829170.886
L11	-15406.954	836273.565	L127	-15232.304	834059.619	L174	-14060.260	829125.790
L12	-15452.004	836259.557	L128	-15164.863	833925.137	L175	-14063.353	829109.832
L12A	-15499.774	836251.155	L129	-15072.595	833827.892	L176	-14087.290	829065.163
L12B	-15518.148	836247.921	L130	-14850.309	833661.058	L179	-13917.817	829145.368
L12C	-15534.899	836249.402	L131	-14808.963	833632.941	L180	-13905.121	829130.046
L12D	-15533.956	836287.475	L132	-14770.829	833600.102	L181	-13916.207	829118.868
L13	-15470.306	836296.838	L133	-13996.361	833073.542	L182	-13932.755	829135.280
L14	-15441.578	836308.529	L134	-13763.160	832924.490	L183	-13941.813	829156.799
L15	-15416.599	836326.752	L135	-13567.127	832813.359	L184	-13968.336	829219.812
L16	-15397.265	836350.882	L136	-13328.443	832730.906	L185	-13979.788	829240.166
L17	-15384.928	836379.235	L137	-13248.359	832664.560	L186	-13995.120	829256.968
L18	-15380.449	836409.828	L138	-13210.065	832659.588	L187	-14014.316	829270.257
L19	-15384.141	836440.527	L139	-12938.181	832787.397	L188	-14031.595	829279.495
L20	-15397.853	836477.014	L140	-12923.990	832760.966	L189	-14053.933	829240.410
L21	-15419.019	836509.743	L141	-13182.038	832607.385	L190	-14062.859	829191.217
L22	-15446.670	836537.215	L142	-13188.556	832575.037	L191	-14082.664	829069.031
L23	-15533.391	836602.791	L143	-13145.728	832495.193	L192	-14131.620	828996.043
L24	-15590.221	836643.364	L144	-13004.516	832242.603	L193	-14171.740	828901.152
L100	-15754.928	836446.836	L145	-12923.769	832089.685	L194	-14222.211	828781.813
L101	-15743.504	836366.388	L146	-12875.453	831976.487	L195	-14453.719	828234.443
L102	-15733.769	836324.891	L147	-12832.771	831860.837	L196	-14471.417	828168.136
L103	-15686.899	836303.562	L148	-12801.675	831741.206	L197	-14468.393	828149.614
L104	-15691.592	836265.712	L149	-12776.922	831620.150	L198	-14435.323	828096.971
L105	-15737.696	836255.431	L150	-12768.375	831496.648	L199	-14483.655	828053.297
L106	-15756.640	836212.161	L151	-12763.466	831393.956	L200	-14521.615	828081.242
L107	-15775.269	836004.642	L152	-12749.198	831285.793			
L108	-15777.260	835933.385	L153	-12795.822	831189.464			
L109	-15763.451	835890.556	L154	-12806.988	831079.779			
L110	-15767.710	835872.419	L155	-12859.714	830985.703			
L111	-15791.275	835817.732	L156	-13295.528	830642.575			
L112	-15799.452	835754.249	L157	-13322.624	830602.151			
L113	-15803.283	835637.346	L158	-13335.014	830592.364			
L114	-15799.834	835520.528	L159	-13378.849	830576.956			
L115	-15786.145	835404.498	L160	-13430.170	830536.568			
L116	-15766.238	835289.319	L161	-13524.525	830455.611			

CO-ORDINATE LIST/KOÖRDINAATLYS WG 29° CONST./KONST. Y = ± 0.00 X = + 2 000 000.00

R1	-16379.649	837358.606	R163	-13141.455	830832.614
R1A	-16451.290	837439.190	R164	-13327.563	830689.521
R2	-16396.034	837381.364	R165	-13366.317	830674.275
R3	-16402.744	837407.851	R166	-13388.222	830654.420
R4	-16402.183	837435.169	R166	-13388.222	830654.420
R5	-16394.389	837461.358	R167	-13407.136	830626.379
R6	-16379.924	837484.538	R168	-13465.040	830580.790
R7	-16359.650	837503.206	R169	-13562.202	830496.164
R8	-16271.406	837564.850	R170	-13652.480	830404.454
R9	-16233.605	837536.338	R171	-13734.748	830305.477
R9A	-16259.554	837573.129	R172	-13820.583	830207.783
R11	-16302.040	837607.780	R173	-13876.447	830090.487
R10	-16315.887	837652.998	R174	-13919.912	830003.625
R12	-16386.751	837548.594	R174A	-13938.996	829949.372
R13	-16417.084	837532.805	R177	-13961.201	829886.241
R14	-16450.454	837525.338	R178	-13974.726	829852.286
R15	-16484.622	837526.693	R179	-14005.961	829727.508
R16	-16517.296	837536.779	R180	-14021.343	829664.169
R17	-16534.007	837545.905	R181	-14090.581	829379.072
R100	-15801.750	836357.002	R182	-14128.891	829304.615
R101	-15812.130	836333.315	R183	-14145.099	829237.875
R102	-15861.624	836322.435	R184	-14142.704	829165.120
R103	-15956.399	836295.456	R187	-14155.789	829110.568
R104	-15877.263	836285.865	R188	-14185.293	829015.221
R105	-15832.242	836265.751	R189	-14217.827	828920.531
R106	-15817.193	836218.793	R190	-14487.995	828281.762
R107	-15817.087	836117.027	R191	-14522.624	828226.072
R108	-15837.758	835914.192	R192	-14534.486	828224.393
R109	-15858.312	835860.461	R193	-14582.960	828264.015
R110	-15858.705	835843.551	R194	-14632.766	828222.001
R111	-15847.565	835799.874	R195	-14612.447	828199.011
R112	-15851.243	835758.899	R196	-14580.209	828147.436
R113	-15855.450	835674.581	a	-16185.800	837515.085
R114	-15857.280	835637.895	b	-16240.503	837586.412
R115	-15853.704	835516.794	c	-16330.540	837703.415
R116	-15840.540	835396.357	DR1	-16179.128	837523.701
R117	-15817.868	835277.344	DR2	-16213.028	837571.357
R118	-15784.879	835160.805	DR3	-16226.890	837616.720
R119	-15635.250	834689.288	DR4	-16236.165	837629.758
R120	-15611.423	834581.474	DR5	-16274.472	837657.732
R121	-15560.439	834408.915	DR6	-16318.754	837719.981
R122	-15510.103	834209.207			
R123	-15484.773	834111.052			
R124	-15447.011	833987.722			
R125	-15457.472	833955.088			
R126	-15509.661	833916.439			
R127	-15491.807	833892.330			
R128	-15439.618	833930.979			
R129	-15406.898	833930.256			
R130	-15360.460	833895.044			
R131	-15327.277	833873.969			
R132	-14925.947	833638.484			
R133	-14885.710	833608.998			
R134	-14844.364	833580.882			
R135	-14799.507	833557.929			
R136	-13993.054	833009.536			
R137	-13756.971	832841.182			
R138	-13624.155	832724.286			
R139	-13464.528	832532.163			
R140	-13466.812	832503.585			
R141	-13493.244	832489.394			
R142	-13479.053	832462.963			
R143	-13443.811	832481.884			
R144	-13404.698	832476.269			
R145	-13349.286	832431.529			
R146	-13280.880	832389.967			
R147	-13216.144	832345.330			
R148	-13156.975	832293.537			
R149	-13104.161	832235.278			
R150	-12974.706	832063.016			
R151	-12925.206	831955.502			
R152	-12882.355	831845.164			
R153	-12851.994	831730.419			
R154	-12832.680	831613.546			
R155	-12829.528	831495.543			
R156	-12832.885	831400.387			
R157	-12861.927	831309.725			
R158	-12877.360	831216.998			
R159	-12916.534	831130.525			
R160	-12954.746	831045.157			
R161	-13003.998	830963.684			
R162	-13070.443	830895.498			





REFERENCE / VERWYSINGS

ROAD PROCLAMATION
PADPROKLAMASIE

ACCESS ROAD DECLARED
TOEGANGS PAD VERKLAAR



ROAD WIDENED TO VARYING WIDTHS
PAD WISSELEND VERBREED

EXISTING ROAD
BESTAANDE PAD



48.4m WIDE
48.4m WYD

The Figures : DR1-DR4, DR7-DR11 and R109-R113, PR5, PR4, PR3, PR2, PR1
Die Figure : and L110, L109, PL1-PL4 and L174, DL1-DL8, L175
and R174A, R177-R180, DR12-DR16

REPRESENTS THE PROCLAMATION OF THE PORTIONS CONCERNED OF THE ACCESS
ROADS OVER THE FARMS RIETVLY No. 271-JQ, BOEKENHOUTFONTEIN No. 260-JQ
AND BEERFONTEIN No. 259-JQ AS INTENDED BY THE PUBLICATION
THEREOF IN THE PROVINCIAL GAZETTE AND SHOWN IN DETAIL ON PLANS:

VERTEENWOORDIG DIE PROKLAMASIE VAN DIE BETROKKE GEDEELTES VAN DIE TOEGANGS
PAAJE OOR DIE PLASE RIETVLY No. 271-JQ, BOEKENHOUTFONTEIN No. 260-JQ,
EN BEERFONTEIN No. 259-JQ SOOS BEDOEL BY DIE AFKONDIGING
DAAR VAN IN DIE PROVINSIALE KOERANT EN DIE DETAIL GETOON OP PLANNE:

Resolution Number : R20/2010 Dated : 29 APRIL 2010
Resolusie Nommer : R20/2010 Datum : 29 APRIL 2010

FILE NO. / BUNDEL NR: R42-10/4/2/4-P115/1 (Western Bypass)

CO-ORDINATE LIST/KOÖRDINAATLYS WG 29° CONST./KONST. Y • 0.00 X • 2 000 000.00

DR1	-16179.128	837523.701
DR2	-16213.028	837571.357
DR3	-16226.890	837616.720
DR4	-16236.165	837629.758
DR5	-16274.472	837657.732
DR8	-16206.535	837622.609
DR9	-16208.248	837578.439
DR10	-16180.673	837539.674
DR11	-16166.974	837539.396
DR12	-14028.706	829669.585
DR13	-13982.408	829854.543
DR14	-13964.215	829900.312
DR15	-13963.014	829940.743
DR16	-13956.268	829960.096
DL1	-13974.709	829124.279
DL2	-13923.700	829114.640
DL3	-13877.396	829093.803
DL4	-13835.975	829061.465
DL5	-13847.059	829050.289
DL6	-13885.618	829080.074
DL7	-13928.513	829099.471
DL8	-13978.531	829108.482
PL1	-15494.124	835975.999
PL2	-15490.347	835983.259
PL3	-15482.264	835957.788
PL4	-15489.478	835960.687
PR1	-15888.794	835850.791
PR2	-15883.942	835835.544
PR3	-15855.833	835797.251
PR4	-15859.217	835759.620
PR5	-15863.588	835671.999
d	-15766.908	836312.341
e	-15805.445	836316.104