



Western Cape Government • Wes-Kaapse Regering • URhulumente weNtshona Koloni

PROVINCE OF THE WESTERN CAPE

PROVINSIE WES-KAAP

Provincial Gazette Extraordinary

7942

Friday, 15 June 2018

Buitengewone Provinsiale Koerant

7942

Vrydag, 15 Junie 2018

Registered at the Post Office as a Newspaper

CONTENTS

*(*Reprints are obtainable at Room M21, Provincial Legislature Building, 7 Wale Street, Cape Town 8001.)*

No

Page

PROVINCIAL NOTICE

91	Municipal Demarcation Board: Notice in Terms of Section 21 of Local Government: Municipal Demarcation Act, 1998 (Western Cape)	2
----	--	---

PROVINCIAL NOTICE

The following Provincial Notice is published for general information.

ADV. B. GERBER,
DIRECTOR-GENERAL

Provincial Legislature Building,
Wale Street,
Cape Town.

PROVINSIALE KENNISGEWING

Die volgende Provinsiale Kennisgewing word vir algemene inligting gepubliseer.

ADV. B. GERBER,
DIREKTEUR-GENERAAL

Provinsiale Wetgewer-gebou,
Waalstraat,
Kaaipstad.

ISAZISO SEPHONDO

Esi saziso silandelayo sipapashelwe ukunika ulwazi ngokubanzi.

ADV. B. GERBER,
UMLAWULI-JIKELELE

ISakhiwo sePhondo,
Wale Street,
eKapa.

PROVINCIAL NOTICE

P.N. 91/2018

15 June 2018



**MUNICIPAL DEMARCATION BOARD
NOTICE IN TERMS OF SECTION 21 OF LOCAL GOVERNMENT:
MUNICIPAL DEMARCATION ACT, 1998
(Western Cape)**

In terms of Section 21 of Local Government: Municipal Demarcation Act, 1998 (Act No.27 of 1998) the Municipal Demarcation Board has re-determined the boundaries of municipalities listed in the Schedule.

Any person aggrieved by the re-determinations listed in the Schedule may submit objections within 30 days of publication of this notice to:

The Municipal Demarcation Board
Private Bag x123
Centurion
0046
South Africa
Fax: 012-3422480
E-mail: registry@demarcation.org.za

Objections must be based on the criteria provided for in Sections 24 and 25 of Demarcation Act and must include the Names, and contact details of person or organisation making representations. The relevant reference number (DEM No.) must please be used in any correspondence with the MDB.

A map for each DEM Number can be downloaded from the MDB's web-site (www.demarcation.org.za), or on request from the MDB by sending an email to daniel@demarcation.org.za or by calling Fazel at 012 342 2481 for more information on how to acquire maps.

The relevant reference number (DEM number) must please be used in any correspondence with the Board.

Where there is a discrepancy between the description and the map, the map will prevail.

**MS JANE THUPANA
CHAIRPERSON: MUNICIPAL DEMARCATION BOARD**

SCHEDULE

DEM NO	AFFECTED MUNICIPALITIES	DESCRIPTION
DEM6300	Theewaterskloof Local Municipality (WC031), Cape Agulhas Local Municipality (WC033)	In terms of Section 21 of the Local Government: Municipal Demarcation Act, 1998 (Act No. 27 of 1998) the Municipal Demarcation Board has re-determined the municipal boundaries of Theewaterskloof Local Municipality (WC031) and Cape Agulhas Local Municipality (WC033) by (1) excluding a portion of Farm Brakfontein 991 from the municipal area of Cape Agulhas Local Municipality (WC033), and by including it into the municipal area of Theewaterskloof Local Municipality (WC031); (2) excluding a portion of Farm Karne Melk Rivier 614 from the municipal area of Theewaterskloof Local Municipality (WC031) and by including it into the municipal area of Cape Agulhas Local Municipality (WC033).
DEM6303	Swartland Local Municipality (WC015), West Coast District Municipality (DC01), Drakenstein Local Municipality (WC023), Cape Winelands District Municipality (DC02)	In terms of Section 21 of the Local Government: Municipal Demarcation Act, 1998 (Act No. 27 of 1998) the Municipal Demarcation Board has re-determined the municipal boundaries of Swartland Local Municipality (WC015), West Coast District Municipality (DC01), Drakenstein Local Municipality (WC023) and Cape Winelands District Municipality (DC02) by excluding a portion of Farm Boter Kloof 851 from the municipal areas of Drakenstein Local Municipality (WC023), Cape Winelands District Municipality (DC02) and by including it into the municipal areas of Swartland Local Municipality (WC015) and West Coast District Municipality (DC01).
DEM6306	City of Cape Town Metropolitan Municipality (CPT), Drakenstein Local Municipality (WC023), Cape Winelands District Municipality (DC02)	In terms of Section 21 of the Local Government: Municipal Demarcation Act, 1998 (Act No. 27 of 1998) the Municipal Demarcation Board has re-determined the municipal boundaries of City of Cape Town Metropolitan Municipality (CPT), Drakenstein Local Municipality (WC023) and Cape Winelands District Municipality (DC02) by excluding a portion of Farm Leeukuil 936 from the municipal areas of Drakenstein Local Municipality (WC023), Cape Winelands District Municipality (DC02) and by including it into the municipal area of City of Cape Town Metropolitan Municipality (CPT).

DEM6309	Stellenbosch Local Municipality (WC024), Cape Winelands District Municipality (DC02), City of Cape Town Metropolitan Municipality (CPT)	In terms of Section 21 of the Local Government: Municipal Demarcation Act, 1998 (Act No. 27 of 1998) the Municipal Demarcation Board has re-determined the municipal boundaries of Stellenbosch Local Municipality (WC024), Cape Winelands District Municipality (DC02) and City of Cape Town Metropolitan Municipality (CPT) by excluding a portion of Farm Bank Jonker 155 from the municipal area of City of Cape Town Metropolitan Municipality (CPT) and by including it into the municipal areas of Stellenbosch Local Municipality (WC024) and Cape Winelands District Municipality (DC02).
DEM6317	City of Cape Town Metropolitan Municipality (CPT), Swartland Local Municipality (WC015), West Coast District Municipality (DC01)	In terms of Section 21 of the Local Government: Municipal Demarcation Act, 1998 (Act No. 27 of 1998) the Municipal Demarcation Board has re-determined the municipal boundaries of City of Cape Town Metropolitan Municipality (CPT), Swartland Local Municipality (WC015) and West Coast District Municipality (DC01) by excluding a portion of Farm Modderfontein 27 from the municipal areas of Swartland Local Municipality (WC015), West Coast District Municipality (DC01) and by including it into the municipal area of City of Cape Town Metropolitan Municipality (CPT).
DEM6318	City of Cape Town Metropolitan Municipality (CPT), Swartland Local Municipality (WC015), West Coast District Municipality (DC01)	In terms of Section 21 of the Local Government: Municipal Demarcation Act, 1998 (Act No. 27 of 1998) the Municipal Demarcation Board has re-determined the municipal boundaries of City of Cape Town Metropolitan Municipality (CPT), Swartland Local Municipality (WC015) and West Coast District Municipality (DC01) by excluding a portion of Farm Mosselbank 906 from the municipal area of City of Cape Town Metropolitan Municipality (CPT) and by including it into the municipal areas of Swartland Local Municipality (WC015), West Coast District Municipality (DC01).
DEM6320	City of Cape Town Metropolitan Municipality (CPT), Swartland Local Municipality (WC015), West Coast District Municipality (DC01)	In terms of Section 21 of the Local Government: Municipal Demarcation Act, 1998 (Act No. 27 of 1998) the Municipal Demarcation Board has re-determined the municipal boundaries of City of Cape Town Metropolitan Municipality (CPT), Swartland Local Municipality (WC015) and West Coast District Municipality (DC01) by excluding a portion of Farm 1092 from the municipal area of City of Cape Town

		Metropolitan Municipality (CPT) and by including it into the municipal areas of Swartland Local Municipality (WC015) and West Coast District Municipality (DC01).
DEM6321	City of Cape Town Metropolitan Municipality (CPT), Drakenstein Local Municipality (WC023), Cape Winelands District Municipality (DC02)	In terms of Section 21 of the Local Government: Municipal Demarcation Act, 1998 (Act No. 27 of 1998) the Municipal Demarcation Board has re-determined the municipal boundaries of City of Cape Town Metropolitan Municipality (CPT), Drakenstein Local Municipality (WC023) and Cape Winelands District Municipality (DC02) by excluding portions of Farms Boerfontein 919 and Keerdweder 1122 from the municipal areas of Drakenstein Local Municipality (WC023), Cape Winelands District Municipality (DC02) and by including it in the municipal area of City of Cape Town Metropolitan Municipality (CPT).
DEM6322	City of Cape Town Metropolitan Municipality (CPT), Drakenstein Local Municipality (WC023), Cape Winelands District Municipality (DC02)	In terms of Section 21 of the Local Government: Municipal Demarcation Act, 1998 (Act No. 27 of 1998) the Municipal Demarcation Board has re-determined the municipal boundaries of City of Cape Town Metropolitan Municipality (CPT), Drakenstein Local Municipality (WC023) and Cape Winelands District Municipality (DC02) by (1) excluding portions of Farms Romance 1370, 1369, Matjeskuil 733 and Joostenbergs Vlakte 727 from the municipal areas of Drakenstein Local Municipality (WC023), Cape Winelands District Municipality (DC02) and by including them into the municipal area of City of Cape Town Metropolitan Municipality (CPT); (2) excluding portions of farms Weltevreden 719 and Lourensford Annex 730 from the municipal area of City of Cape Town Metropolitan Municipality (CPT) and by including them into the municipal areas of Drakenstein Local Municipality (WC023) and Cape Winelands District Municipality (DC02).
DEM6323	City of Cape Town Metropolitan Municipality (CPT), Drakenstein Local Municipality (WC023), Cape Winelands District Municipality (DC02)	In terms of Section 21 of the Local Government: Municipal Demarcation Act, 1998 (Act No. 27 of 1998) the Municipal Demarcation Board has re-determined the municipal boundaries of City of Cape Town Metropolitan Municipality (CPT), Drakenstein Local Municipality (WC023) and Cape Winelands District Municipality (DC02) by excluding portion 1 of Farm Schinderkuil 444 from the municipal areas of

		Drakenstein Local Municipality (WC023), Cape Winelands District Municipality (DC02) and by including it into the municipal area of City of Cape Town Metropolitan Municipality (CPT).
DEM6324	Stellenbosch Local Municipality (WC024), Cape Winelands District Municipality (DC02), City of Cape Town Metropolitan Municipality (CPT)	In terms of Section 21 of the Local Government: Municipal Demarcation Act, 1998 (Act No. 27 of 1998) the Municipal Demarcation Board has re-determined the municipal boundaries of Stellenbosch Local Municipality (WC024), Cape Winelands District Municipality (DC02) and City of Cape Town Metropolitan Municipality (CPT) by (1) excluding a portion of Farm 1565 from the municipal area of City of Cape Town Metropolitan Municipality (CPT) and by including it into the municipal areas of Stellenbosch Local Municipality (WC024) and Cape Winelands District Municipality (DC02); (2) excluding a portion of Farm Fairview 245 from the municipal areas of Stellenbosch Local Municipality (WC024), Cape Winelands District Municipality (DC02) and by including it into the municipal area of City of Cape Town Metropolitan Municipality (CPT).
DEM6325	Stellenbosch Local Municipality (WC024), Cape Winelands District Municipality (DC02), City of Cape Town Metropolitan Municipality (CPT)	In terms of Section 21 of the Local Government: Municipal Demarcation Act, 1998 (Act No. 27 of 1998) the Municipal Demarcation Board has re-determined the municipal boundaries of Stellenbosch Local Municipality (WC024), Cape Winelands District Municipality (DC02) and City of Cape Town Metropolitan Municipality (CPT) by (1) excluding a portion of Farm 1565 from the municipal area of City of Cape Town Metropolitan Municipality (CPT) and by including it into the municipal areas of Stellenbosch Local Municipality (WC024) and Cape Winelands District Municipality (DC02); (2) excluding a portion of Farm Fairview 245 from the municipal areas of Stellenbosch Local Municipality (WC024), Cape Winelands District Municipality (DC02) and by including it into the municipal area of City of Cape Town Metropolitan Municipality (CPT).
DEM6331	Stellenbosch Local Municipality (WC024), Cape Winelands District Municipality (DC02), City of Cape Town Metropolitan Municipality (CPT)	In terms of Section 21 of the Local Government: Municipal Demarcation Act, 1998 (Act No. 27 of 1998) the Municipal Demarcation Board has re-determined the municipal boundaries of Stellenbosch Local Municipality (WC024), Cape Winelands District Municipality (DC02) and City

		of Cape Town Metropolitan Municipality (CPT) by aligning the municipal boundary of City of Cape Town Metropolitan Municipality (CPT) and Stellenbosch Local Municipality (WC024), Cape Winelands District Municipality (DC02) to the southern boundary of Erf 222 of Raithby of Stellenbosch Allotment area.
DEM6333	Stellenbosch Local Municipality (WC024), Cape Winelands District Municipality (DC02), City of Cape Town Metropolitan Municipality (CPT)	In terms of Section 21 of the Local Government: Municipal Demarcation Act, 1998 (Act No. 27 of 1998) the Municipal Demarcation Board has re-determined the municipal boundaries of Stellenbosch Local Municipality (WC024), Cape Winelands District Municipality (DC02) and City of Cape Town Metropolitan Municipality (CPT) by (1) excluding a portion of Farm Koopmanskloof Noord 216 from the municipal area of City of Cape Town Metropolitan Municipality (CPT) and by including it into the municipal areas of Stellenbosch Local Municipality (WC024) and Cape Winelands District Municipality (DC02); (2) excluding a portion of Farm Koopmans Kloof 221 from the municipal areas of Stellenbosch Local Municipality (WC024), Cape Winelands District Municipality (DC02) and by including it into the municipal area of City of Cape Town Metropolitan Municipality (CPT).
DEM6334	Stellenbosch Local Municipality (WC024), Cape Winelands District Municipality (DC02), City of Cape Town Metropolitan Municipality (CPT)	In terms of Section 21 of the Local Government: Municipal Demarcation Act, 1998 (Act No. 27 of 1998) the Municipal Demarcation Board has re-determined the municipal boundaries of Stellenbosch Local Municipality (WC024), Cape Winelands District Municipality (DC02) and City of Cape Town Metropolitan Municipality (CPT) by excluding a portion of Farm Koopmans Kloof 221 from the municipal areas of Stellenbosch Local Municipality (WC024), Cape Winelands District Municipality (DC02) and by including it into the municipal area of City of Cape Town Metropolitan Municipality (CPT).
DEM6335	Stellenbosch Local Municipality (WC024), Cape Winelands District Municipality (DC02), City of Cape Town Metropolitan Municipality (CPT)	In terms of Section 21 of the Local Government: Municipal Demarcation Act, 1998 (Act No. 27 of 1998) the Municipal Demarcation Board has re-determined the municipal boundaries of Stellenbosch Local Municipality (WC024), Cape Winelands District Municipality (DC02) and City of Cape Town Metropolitan Municipality (CPT) by excluding a portion of portion 29 of Farm

		Klein Bottelary 17 from the municipal area of City of Cape Town Metropolitan Municipality (CPT) and by including it into the municipal areas of Stellenbosch Local Municipality (WC024) and Cape Winelands District Municipality (DC02).
DEM6336	Stellenbosch Local Municipality (WC024), Cape Winelands District Municipality (DC02), City of Cape Town Metropolitan Municipality (CPT)	In terms of Section 21 of the Local Government: Municipal Demarcation Act, 1998 (Act No. 27 of 1998) the Municipal Demarcation Board has re-determined the municipal boundaries of Stellenbosch Local Municipality (WC024), Cape Winelands District Municipality (DC02) and City of Cape Town Metropolitan Municipality (CPT) by excluding a portion of Farm Klein Bottelary 17 from the municipal areas of Stellenbosch Local Municipality (WC024), Cape Winelands District Municipality (DC02) and by including it into the municipal area of City of Cape Town Metropolitan Municipality (CPT).
DEM6338	Stellenbosch Local Municipality (WC024), Cape Winelands District Municipality (DC02), City of Cape Town Metropolitan Municipality (CPT)	In terms of Section 21 of the Local Government: Municipal Demarcation Act, 1998 (Act No. 27 of 1998) the Municipal Demarcation Board has re-determined the municipal boundaries of Stellenbosch Local Municipality (WC024), Cape Winelands District Municipality (DC02) and City of Cape Town Metropolitan Municipality (CPT) by excluding portions 99, 105, 106 and 112 of the farm Haasendal 222 from the municipal areas of Stellenbosch Local Municipality (WC024), Cape Winelands District Municipality (DC02) and by including them into the municipal area of the City of Cape Town Metropolitan Municipality (CPT).
DEM6339	Stellenbosch Local Municipality (WC024), Cape Winelands District Municipality (DC02), City of Cape Town Metropolitan Municipality (CPT)	In terms of Section 21 of the Local Government: Municipal Demarcation Act, 1998 (Act No. 27 of 1998) the Municipal Demarcation Board has re-determined the municipal boundaries of Stellenbosch Local Municipality (WC024), Cape Winelands District Municipality (DC02) and City of Cape Town Metropolitan Municipality (CPT) by (1) excluding a portion of Farm Fairview 245 from the municipal areas of Stellenbosch Local Municipality (WC024), Cape Winelands District Municipality (DC02) and by including it into the municipal area of City of Cape Town Metropolitan Municipality (CPT); (2) excluding a portion of Farm 250 from the municipal area of City of Cape Town Metropolitan Municipality

		(CPT) and by including it into the municipal areas of Stellenbosch Local Municipality (WC024) and Cape Winelands District Municipality (DC02).
DEM6340	Stellenbosch Local Municipality (WC024), Cape Winelands District Municipality (DC02), City of Cape Town Metropolitan Municipality (CPT)	In terms of Section 21 of the Local Government: Municipal Demarcation Act, 1998 (Act No. 27 of 1998) the Municipal Demarcation Board has re-determined the municipal boundaries of Stellenbosch Local Municipality (WC024), Cape Winelands District Municipality (DC02) and City of Cape Town Metropolitan Municipality (CPT) by excluding Farm 1528 from the municipal areas of Stellenbosch Local Municipality (WC024), Cape Winelands District Municipality (DC02) and by including it into the municipal area of City of Cape Town Metropolitan Municipality (CPT).
DEM6341	Stellenbosch Local Municipality (WC024), Cape Winelands District Municipality (DC02), City of Cape Town Metropolitan Municipality (CPT)	In terms of Section 21 of the Local Government: Municipal Demarcation Act, 1998 (Act No. 27 of 1998) the Municipal Demarcation Board has re-determined the municipal boundaries of Stellenbosch Local Municipality (WC024), Cape Winelands District Municipality (DC02) and City of Cape Town Metropolitan Municipality (CPT) by (1) excluding portions of Farms Vredenburg 692 and Vredenburg 696 from the municipal areas of Stellenbosch Local Municipality (WC024), Cape Winelands District Municipality (DC02) and by including it into the municipal area of City of Cape Town Metropolitan Municipality (CPT); (2) excluding a portion of Farm Vredenburg 696 from the municipal area of City of Cape Town Metropolitan Municipality (CPT) and by including it into the municipal areas of Stellenbosch Local Municipality (WC024), Cape Winelands District Municipality (DC02).
DEM6342	Stellenbosch Local Municipality (WC024), Cape Winelands District Municipality (DC02), City of Cape Town Metropolitan Municipality (CPT)	In terms of Section 21 of the Local Government: Municipal Demarcation Act, 1998 (Act No. 27 of 1998) the Municipal Demarcation Board has re-determined the municipal boundaries of Stellenbosch Local Municipality (WC024), Cape Winelands District Municipality (DC02) and City of Cape Town Metropolitan Municipality (CPT) by excluding a portion of Farm 1531, Farm Driksberg 717 and Farm Drie Wagte 1325 from the municipal area of City of Cape Town Metropolitan Municipality (CPT) and by including

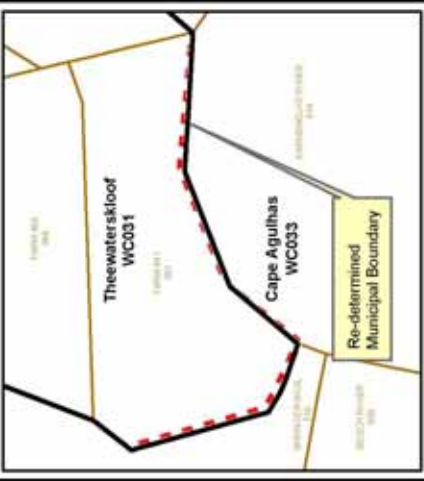
		them into the municipal areas of Stellenbosch Local Municipality (WC024) and Cape Winelands District Municipality (DC02).
DEM6343	Stellenbosch Local Municipality (WC024), Cape Winelands District Municipality (DC02), City of Cape Town Metropolitan Municipality (CPT)	In terms of Section 21 of the Local Government: Municipal Demarcation Act, 1998 (Act No. 27 of 1998) the Municipal Demarcation Board has re-determined the municipal boundaries of Stellenbosch Local Municipality (WC024), Cape Winelands District Municipality (DC02) and City of Cape Town Metropolitan Municipality (CPT) by excluding a portion of Farm Helfor 721 from the municipal areas of Stellenbosch Local Municipality (WC024), Cape Winelands District Municipality (DC02) and by including it into the municipal area of City of Cape Town Metropolitan Municipality (CPT).
DEM6347	City of Cape Town Metropolitan Municipality (CPT), Theewaterskloof Local Municipality (WC031), Overberg District Municipality (DC03)	In terms of Section 21 of the Local Government: Municipal Demarcation Act, 1998 (Act No. 27 of 1998) the Municipal Demarcation Board has re-determined the municipal boundaries of City of Cape Town Metropolitan Municipality (CPT), Theewaterskloof Local Municipality (WC031) and Overberg District Municipality (DC03) by excluding a portion of Farm Weltevreden 93 from the municipal area of City of Cape Town Metropolitan Municipality (CPT) and by including it into the municipal areas of Theewaterskloof Local Municipality (WC031) and Overberg District Municipality (DC03).
DEM6349	Theewaterskloof Local Municipality (WC031), Cape Agulhas Local Municipality (WC033)	In terms of Section 21 of the Local Government: Municipal Demarcation Act, 1998 (Act No. 27 of 1998) the Municipal Demarcation Board has re-determined the municipal boundaries of Theewaterskloof Local Municipality (WC031) and Cape Agulhas Local Municipality (WC033) by excluding a portion of Farm Bosch Rivier 609, a portion of Farm 793 and a portion of Farm 1003 from the municipal area of Cape Agulhas Local Municipality (WC033), and by including them into the municipal area of Theewaterskloof Local Municipality (WC031).
DEM6350	Drakenstein Local Municipality (WC023), Stellenbosch Local Municipality (WC024)	In terms of Section 21 of the Local Government: Municipal Demarcation Act, 1998 (Act No. 27 of 1998) the Municipal Demarcation Board has re-determined the municipal boundaries of Drakenstein Local Municipality (WC023) and Stellenbosch Local Municipality (WC024) by excluding a portion of Farm Boschendal 1674

		from the municipal area of Drakenstein Local Municipality (WC023) and by including it into the municipal area of Stellenbosch Local Municipality (WC024).
--	--	---



MAP NUMBER
DEM6300

DATE
May 2018



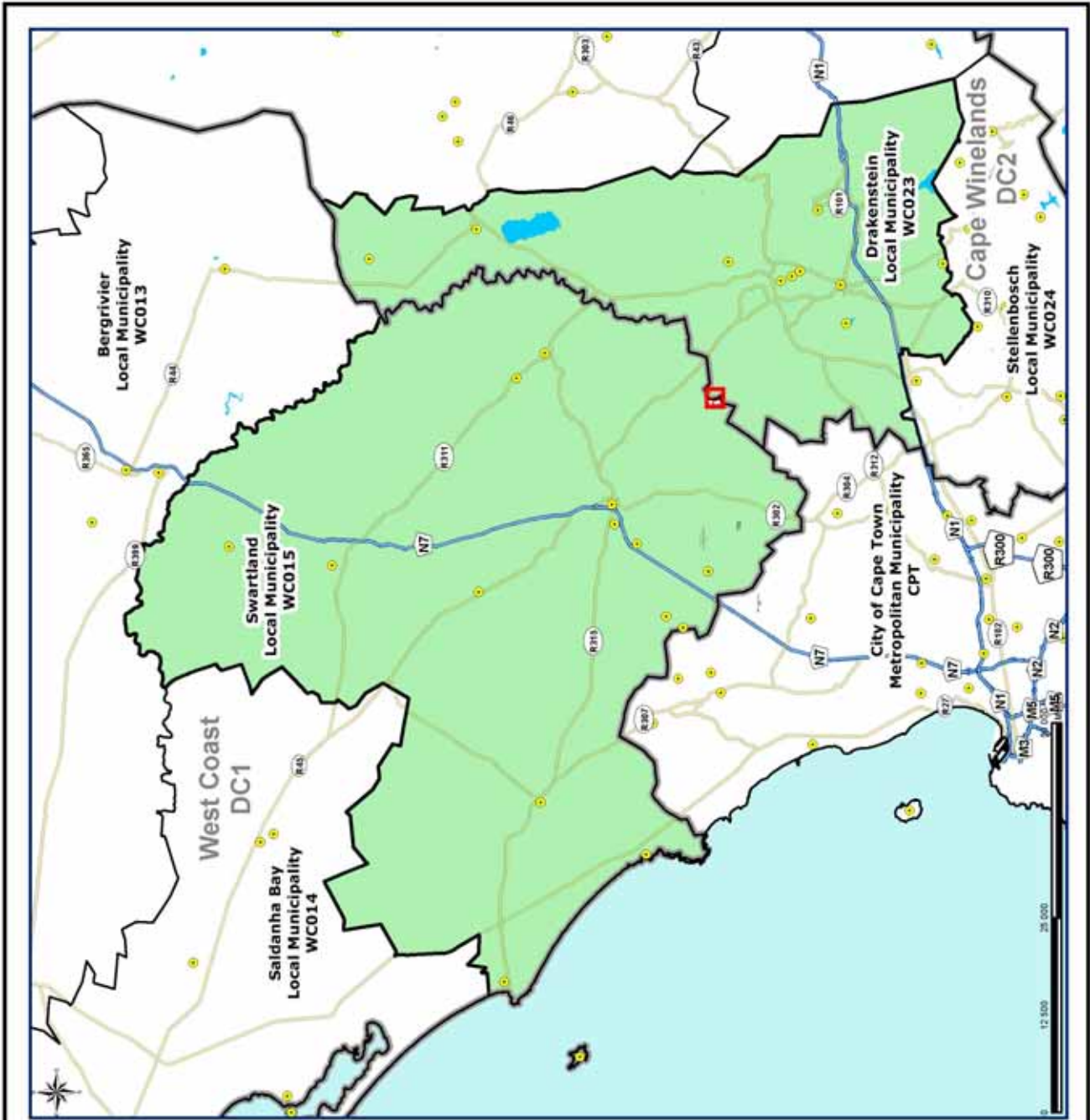
In terms of Section 21 of the Local Government: Municipal Demarcation Act, 1998 (Act No. 27 of 1998) the Municipal Demarcation Board has re-determined the municipal boundaries of Theewaterskloof Local Municipality (WC031) and Cape Agulhas Local Municipality (WC033) by (1) excluding a portion of Farm Brakfontein 991 from the municipal area of Cape Agulhas Local Municipality (WC033), and by including it into the municipal area of Theewaterskloof Local Municipality (WC031); (2) excluding a portion of Farm Kame Melk Rivier 614 from the municipal area of Theewaterskloof Local Municipality (WC031) and by including it into the municipal area of Cape Agulhas Local Municipality (WC033).

Previous Boundary	Wards	Rivers
Local/Metro Municipalities	Sub-Phase	National Roads
District Municipalities	Parent Farms	Main Roads
Dams	Subdivision	Main Phase

For more info regarding this map, you may contact:

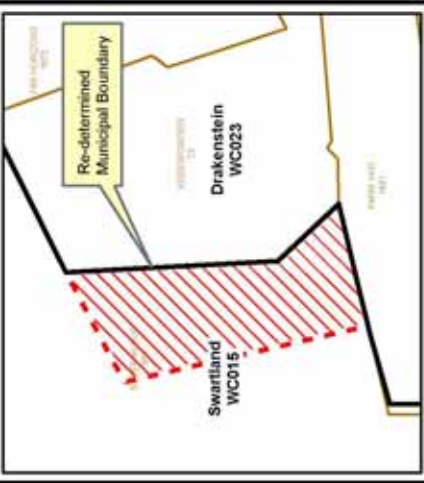
Daniël Sebake
 Tel: (021) 342 2481
 Fax: (021) 342 2480
 e-mail: danie@demarcation.org.za

Where there is a discrepancy between the description and the map, the map will prevail.



MAP NUMBER
DEM6303

DATE
May 2018



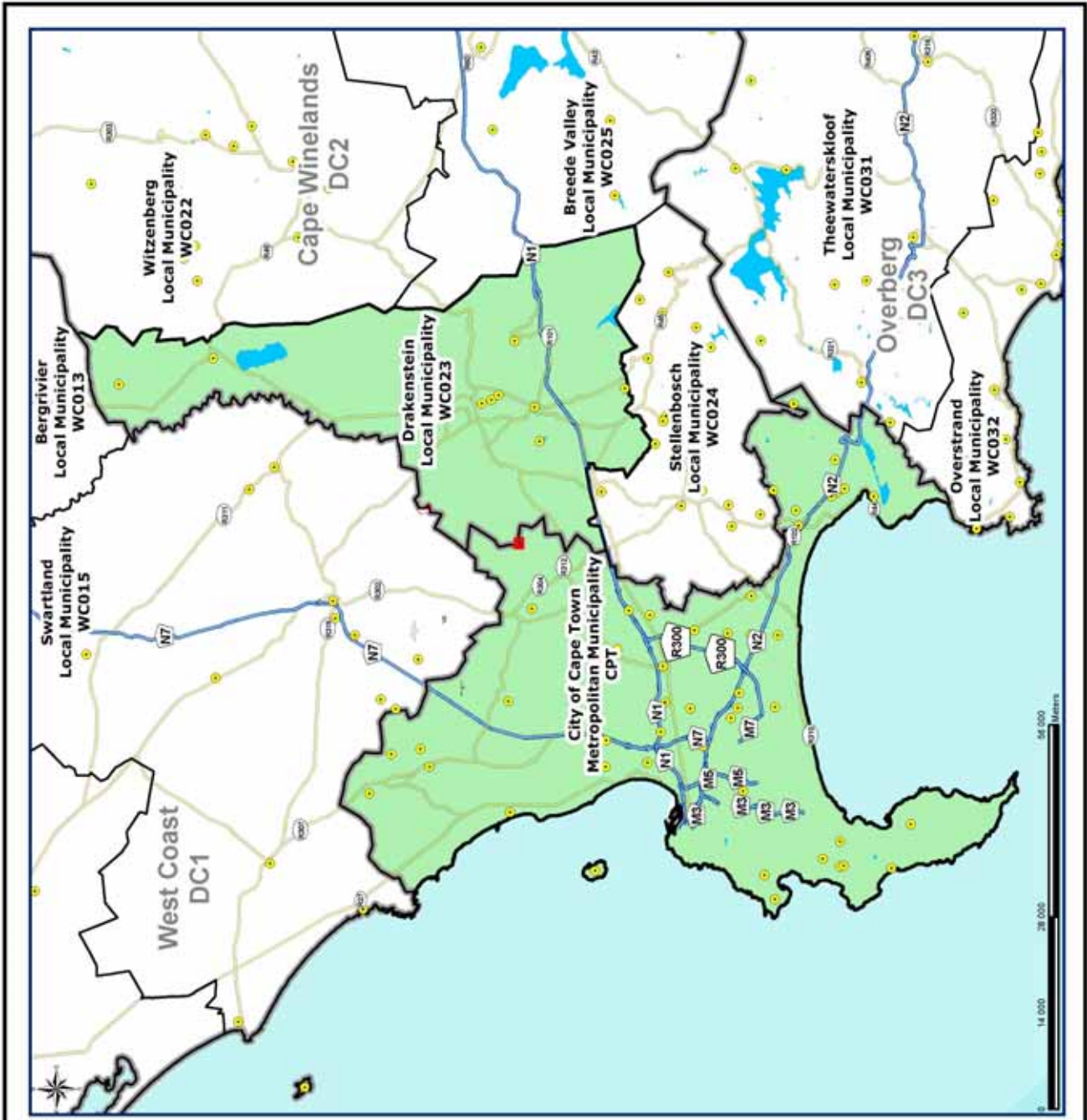
In terms of Section 21 of the Local Government: Municipal Demarcation Act, 1998 (Act No. 27 of 1998) the Municipal Demarcation Board has re-determined the municipal boundaries of Swartland Local Municipality (WC015), West Coast District Municipality (DC01), Drakenstein Local Municipality (WC023) and Cape Winelands District Municipality (DC02) by excluding a portion of Farm Boter Kloof 851 from the municipal areas of Drakenstein Local Municipality (WC023), Cape Winelands District Municipality (DC02) and by including it into the municipal areas of Swartland Local Municipality (WC015) and West Coast District Municipality (DC01).

	Previous Boundary		Werts		Rivers
	Local/Metro Municipality		Sub-Phase		National Roads
	District Municipality		Parent Farms		Main Roads
	Dams		Subdivision		Main Phase

For more info regarding this map, you may contact:

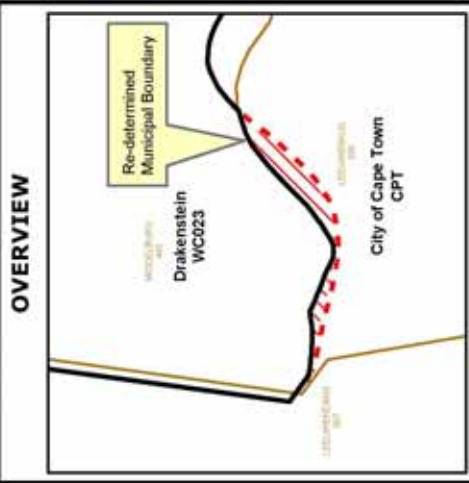
Daniel Sebake
Tel: (021) 342 2481
Fax: (021) 342 2480
e-mail: daniel@demarcation.org.za

Where there is a discrepancy between the description and the map, the map will prevail.



MAP NUMBER
DEM6306

DATE
May 2018



In terms of Section 21 of the Local Government Municipal Demarcation Act, 1998 (Act No. 27 of 1998) the Municipal Demarcation Board has re-determined the municipal boundaries of City of Cape Town Metropolitan Municipality (CPT), Drakenstein Local Municipality (WC023) and Cape Winelands District Municipality (DC02) by excluding a portion of Farm Leeuukuil 936 from the municipal areas of Drakenstein Local Municipality (WC023), Cape Winelands District Municipality (DC02) and by including it into the municipal area of City of Cape Town Metropolitan Municipality (CPT).

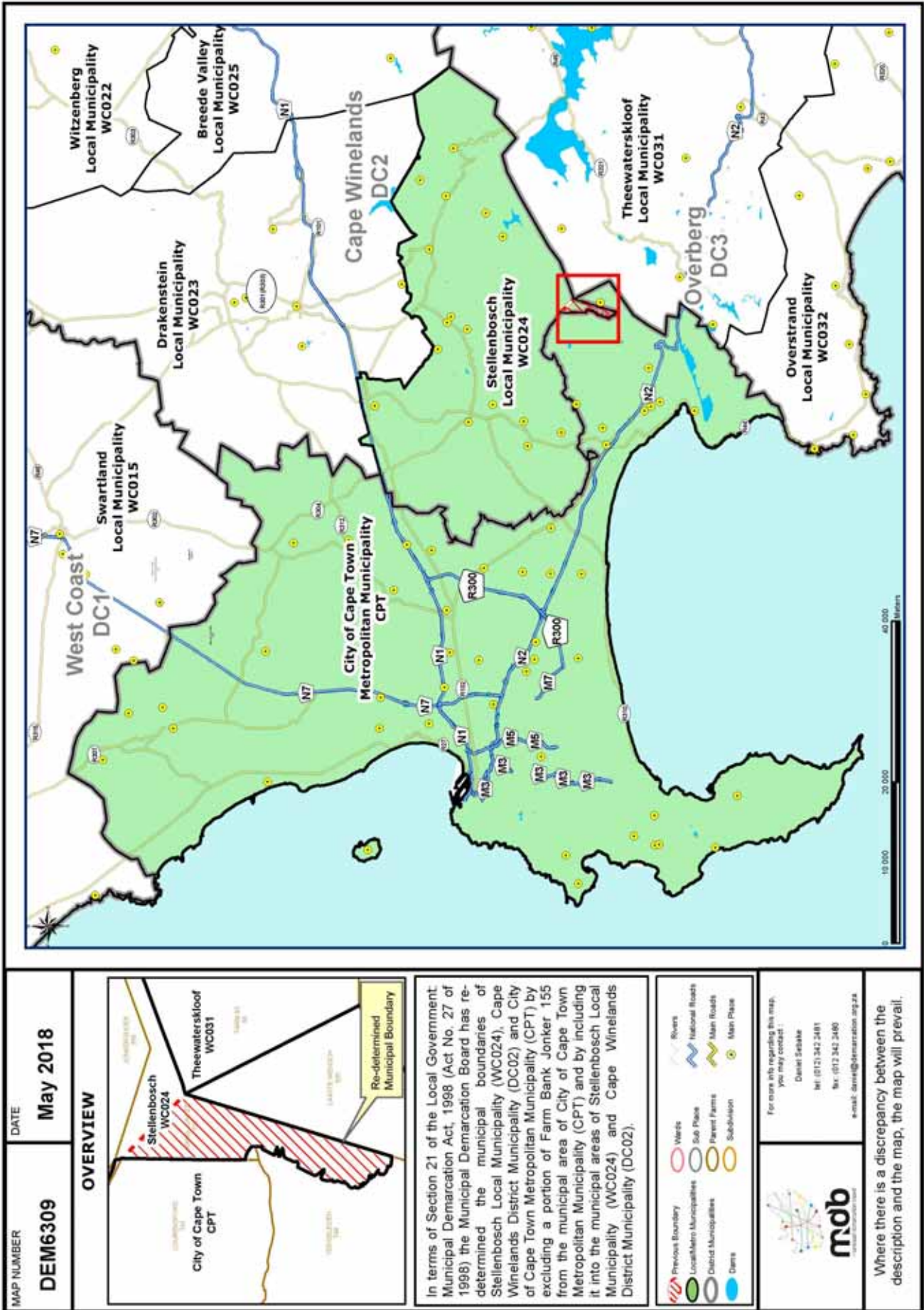
- Previous Boundary
- Local/Metro Municipalities
- District Municipalities
- Dams
- Wards
- Sub-Phase
- Rivers
- National Roads
- Main Roads
- Main Phase
- Parent Farms
- Sub-Phase



For more info regarding this map, you may contact:

Daniël Sebake
 Tel: (021) 342 2481
 Fax: (021) 342 2480
 e-mail: danie@demarcation.org.za

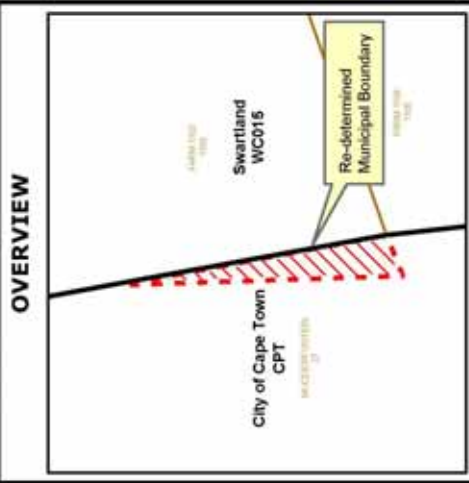
Where there is a discrepancy between the description and the map, the map will prevail.





MAP NUMBER
DEM6317

DATE
May 2018



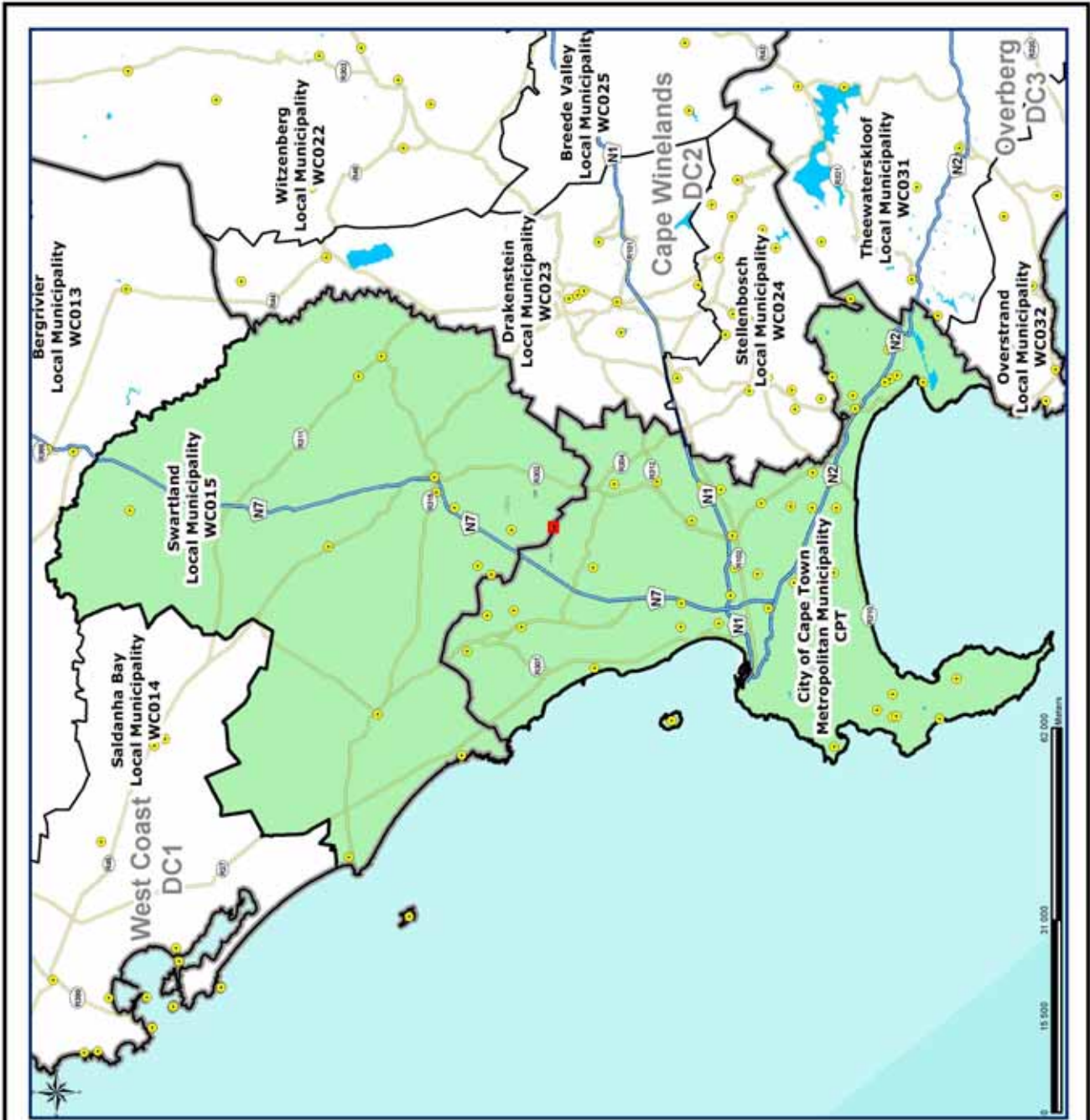
In terms of Section 21 of the Local Government Municipal Demarcation Act, 1998 (Act No. 27 of 1998) the Municipal Demarcation Board has re-determined the municipal boundaries of City of Cape Town Metropolitan Municipality (CPT), Swartland Local Municipality (WC015) and West Coast District Municipality (DC01) by excluding a portion of Farm Modderfontein 27, from the municipal areas of Swartland Local Municipality (WC015), West Coast District Municipality (DC01) and by including it into the municipal area of City of Cape Town Metropolitan Municipality (CPT).

- Previous Boundary
- Local/Metro Municipalities
- District Municipalities
- Rivers
- National Roads
- Main Roads
- Wards
- Sub-Phase
- Parent Farms
- Sub-division
- Main Phase

For more info regarding this map, you may contact:

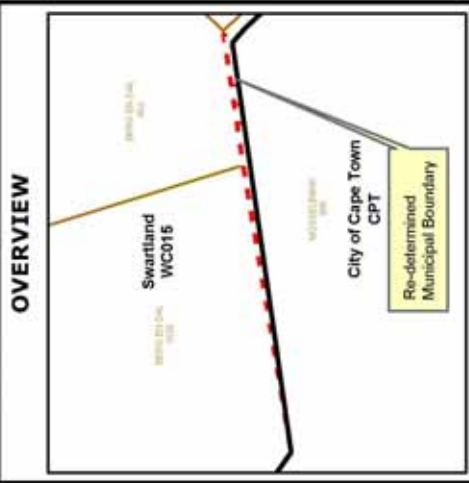
Daniel Sebake
Tel: (021) 342 2481
Fax: (021) 342 2480
e-mail: daniel@demarcation.org.za

Where there is a discrepancy between the description and the map, the map will prevail.



MAP NUMBER
DEM6318

DATE
May 2018



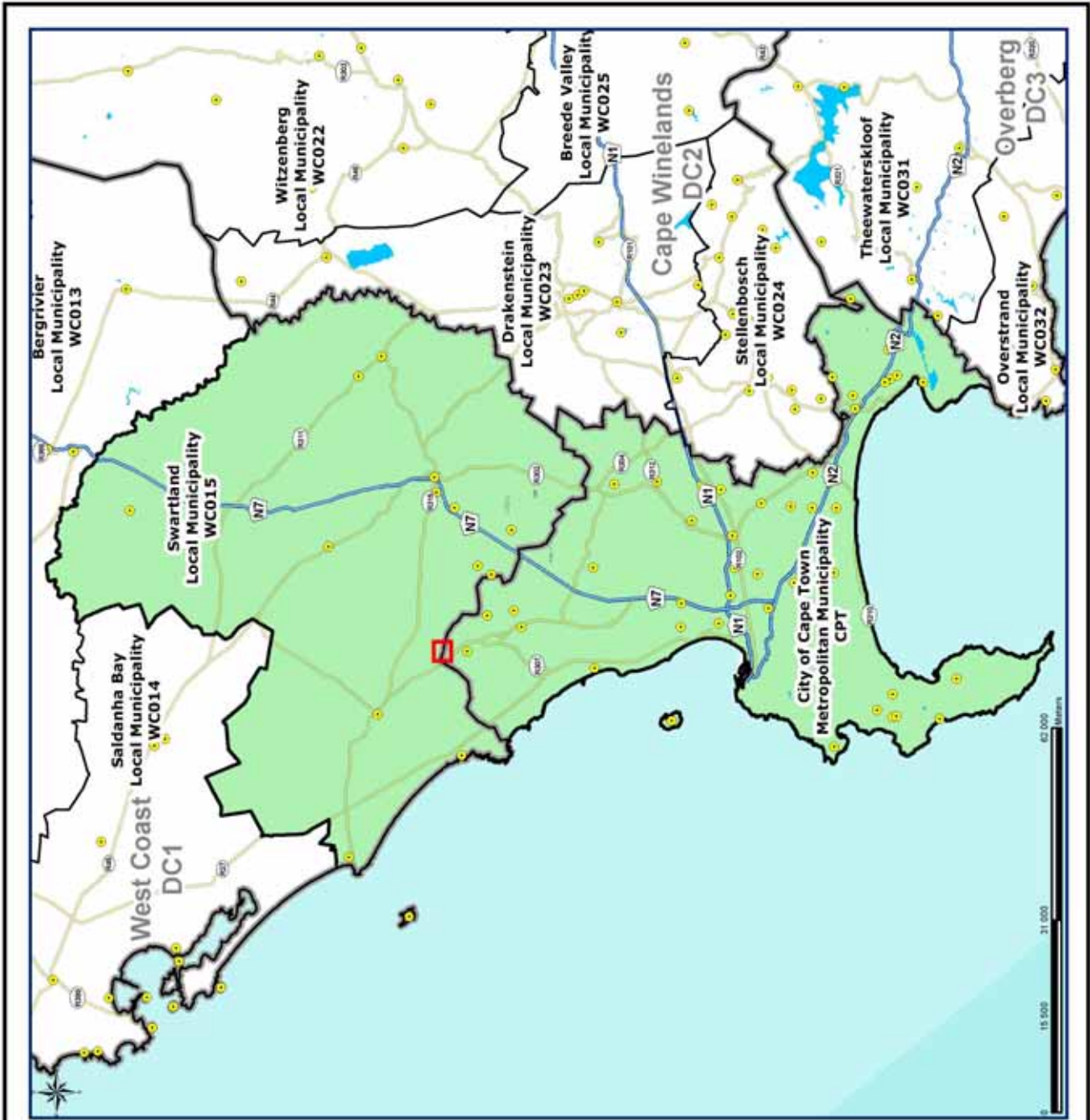
In terms of Section 21 of the Local Government Municipal Demarcation Act, 1998 (Act No. 27 of 1998) the Municipal Demarcation Board has re-determined the municipal boundaries of City of Cape Town Metropolitan Municipality (CPT), Swartland Local Municipality (WC015) and West Coast District Municipality (DC01) by excluding a portion of Farm Mosselbank 906 from the municipal area of City of Cape Town Metropolitan Municipality (CPT) and by including it into the municipal areas of Swartland Local Municipality (WC015), West Coast District Municipality (DC01).

- Previous Boundary
- Local/Metro Municipalities
- District Municipalities
- Dams
- Wards
- Sub-Phase
- Parent Farms
- Subdivision
- Rivers
- National Roads
- Main Roads
- Main Phase

For more info regarding this map, you may contact:

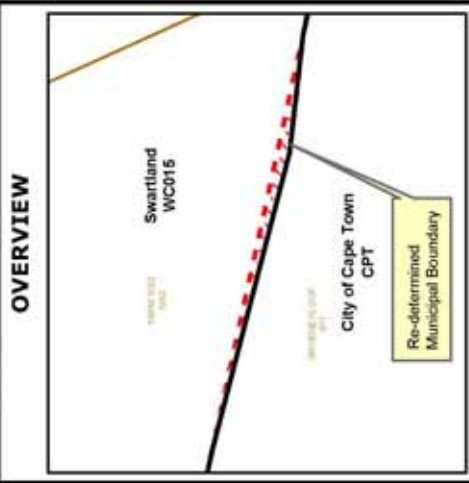
Daniël Sebake
 Tel: (021) 342 2481
 Fax: (021) 342 2480
 e-mail: danie@demarcation.org.za

Where there is a discrepancy between the description and the map, the map will prevail.



MAP NUMBER
DEM6320

DATE
May 2018



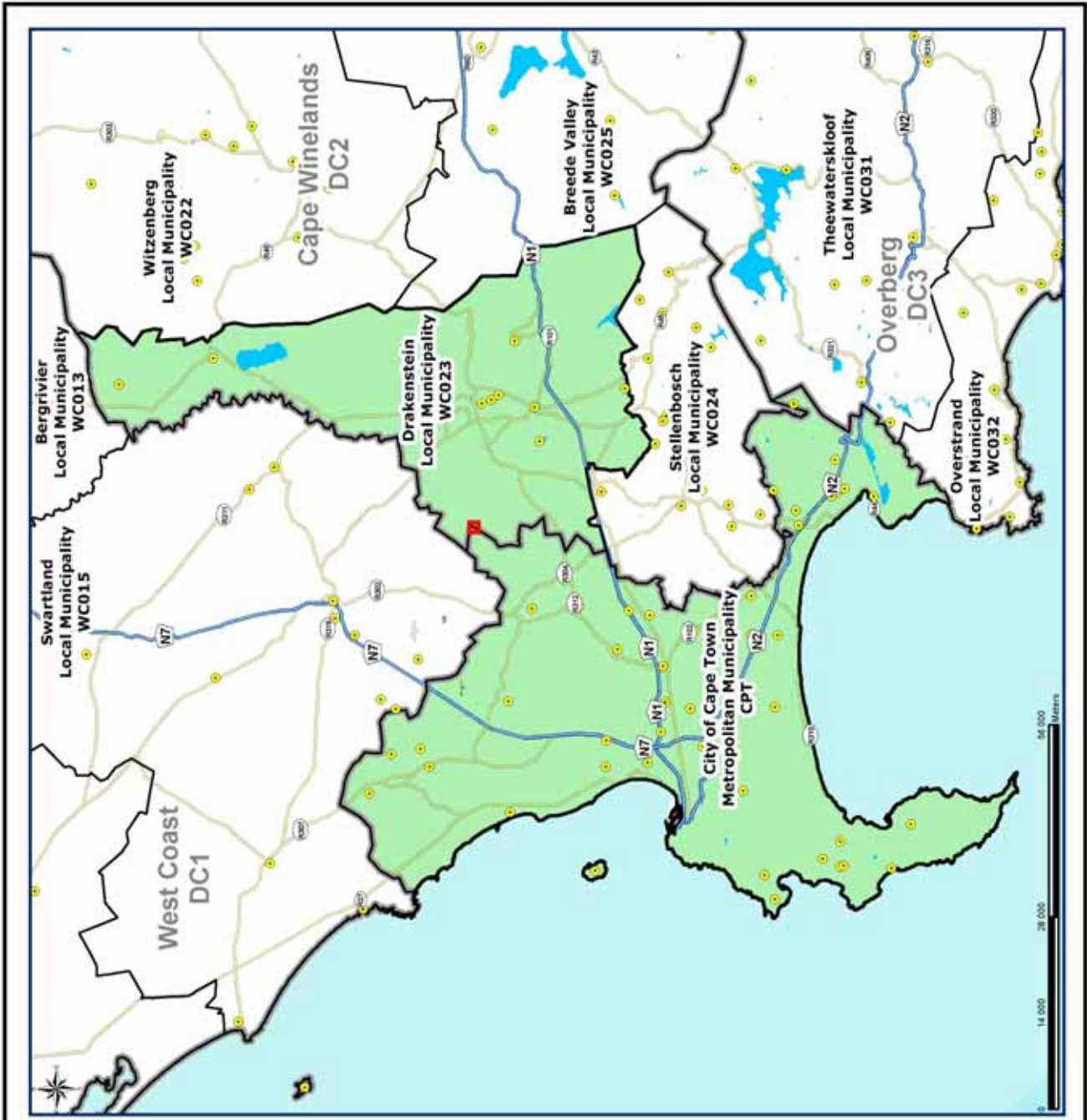
In terms of Section 21 of the Local Government Municipal Demarcation Act, 1998 (Act No. 27 of 1998) the Municipal Demarcation Board has re-determined the municipal boundaries of City of Cape Town Metropolitan Municipality (CPT), Swartland Local Municipality (WC015) and West Coast District Municipality (DC01) by excluding a portion of Farm 1092 from the municipal area of City of Cape Town Metropolitan Municipality (CPT) and by including it into the municipal areas of Swartland Local Municipality (WC015) and West Coast District Municipality (DC01).

- Previous Boundary
- Local/Metro Municipalities
- District Municipalities
- Dams
- Wards
- Sub-Phase
- Parent Farms
- Sub-division
- Rivers
- National Roads
- Main Roads
- Main Phase

For more info regarding this map, you may contact:

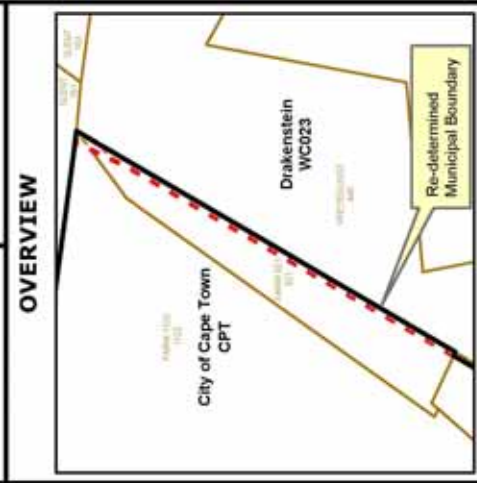
Daniel Sebake
Tel: (021) 342 2481
Fax: (021) 342 2480
e-mail: daniel@demarcation.org.za

Where there is a discrepancy between the description and the map, the map will prevail.



MAP NUMBER
DEM6321

DATE
May 2018



In terms of Section 21 of the Local Government Municipal Demarcation Act, 1998 (Act No. 27 of 1998) the Municipal Demarcation Board has re-determined the municipal boundaries of City of Cape Town Metropolitan Municipality (CPT), Drakenstein Local Municipality (WC023) and Cape Winelands District Municipality (DC02) by excluding portions of Farms Boerfontein 919 and Keerdrwerder 1122 from the municipal areas of Drakenstein Local Municipality (WC023), Cape Winelands District Municipality (DC02) and by including it in the municipal area of City of Cape Town Metropolitan Municipality (CPT).

Previous Boundary	Wards	Rivers
Local/Metro Municipalities	Sub-Phase	National Roads
District Municipalities	Parent Farms	Main Roads
Dams	Subdivision	Main Phase

For more info regarding this map, you may contact:

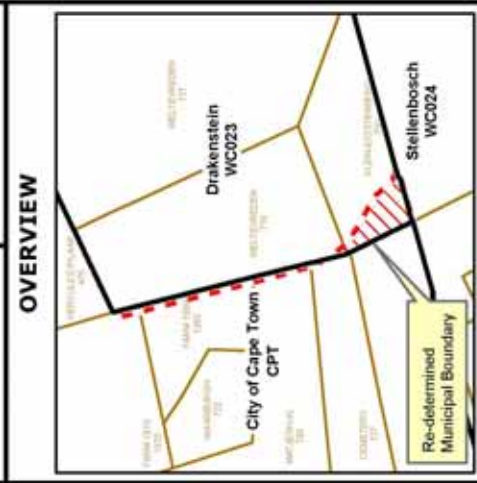
Daniël Sebake
 Tel: (021) 342 2481
 Fax: (021) 342 2480
 e-mail: danie@demarcation.org.za

Where there is a discrepancy between the description and the map, the map will prevail.



MAP NUMBER
DEM6322

DATE
May 2018



In terms of Section 21 of the Local Government: Municipal Demarcation Act, 1998 (Act No. 27 of 1998), the Municipal Demarcation Board has re-determined the municipal boundaries of City of Cape Town Metropolitan Municipality (CPT), Drakenstein Local Municipality (WC023) and Cape Winelands District Municipality (DC02) by (1) excluding portions of Farms Romanoo 1370, 1369, Mofjeskool 733 and Joubertseberg Vloete 727 from the municipal areas of Drakenstein Local Municipality (WC023), Cape Winelands District Municipality (DC02) and by including them into the municipal area of City of Cape Town Metropolitan Municipality (CPT); (2) excluding portions of farms Weltevreden 719 and Lourensford Annex 730 from the municipal area of City of Cape Town Metropolitan Municipality (CPT) and by including them into the municipal areas of Drakenstein Local Municipality (WC023) and Cape Winelands District Municipality (DC02).

- Previous Boundary
- Local/Metro Municipalities
- District Municipalities
- Dams
- Werts
- Sub Phase
- Parent Farms
- Subdivision
- Rivers
- National Roads
- Main Roads
- Main Phase

For more info regarding this map, you may contact:

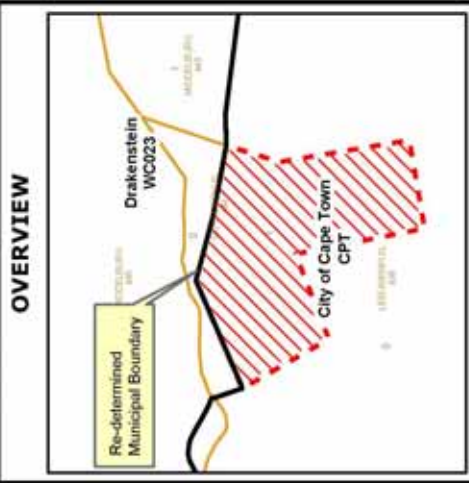
Daniel Sebake
Tel: (012) 342 2481
Fax: (012) 342 2480
e-mail: daniel@demarcation.org.za

Where there is a discrepancy between the description and the map, the map will prevail.



MAP NUMBER
DEM6323

DATE
May 2018



In terms of Section 21 of the Local Government Municipal Demarcation Act, 1998 (Act No. 27 of 1998) the Municipal Demarcation Board has re-determined the municipal boundaries of City of Cape Town Metropolitan Municipality (CPT), Drakenstein Local Municipality (WC023) and Cape Winelands District Municipality (DC02) by excluding portion 1 of Farm Schinderkuil 444 from the municipal areas of Drakenstein Local Municipality (WC023), Cape Winelands District Municipality (DC02) and by including it into the municipal area of City of Cape Town Metropolitan Municipality (CPT).

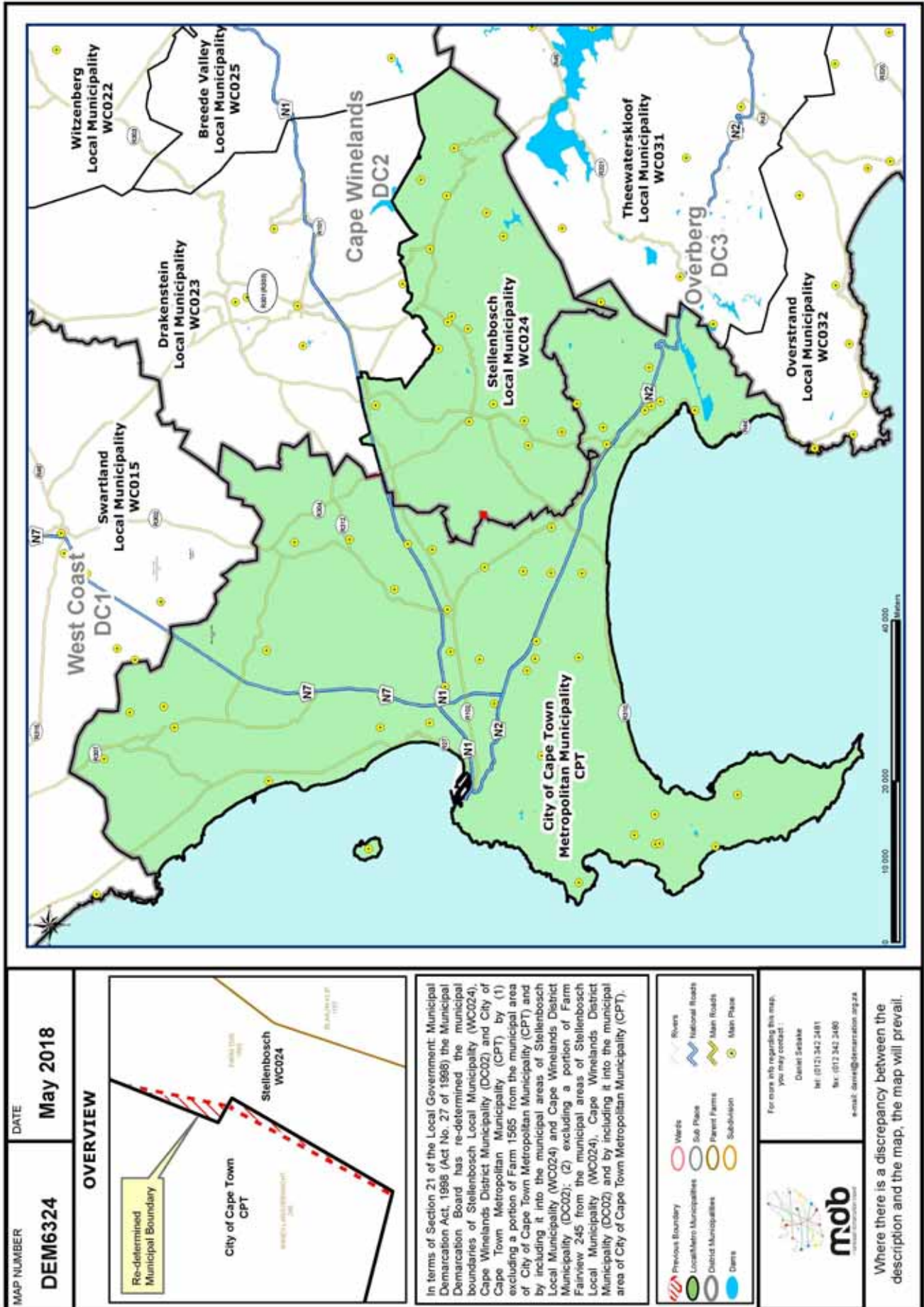
- | | | |
|----------------------------|--------------|----------------|
| Previous Boundary | Wards | Rivers |
| Local/Metro Municipalities | Sub Phase | National Roads |
| District Municipalities | Parent Farms | Main Roads |
| Dams | Subdivision | Main Phase |

For more info regarding this map, you may contact:

Daniël Sebake
 Tel: (021) 342 2481
 Fax: (021) 342 2480
 e-mail: danie@demarcation.org.za

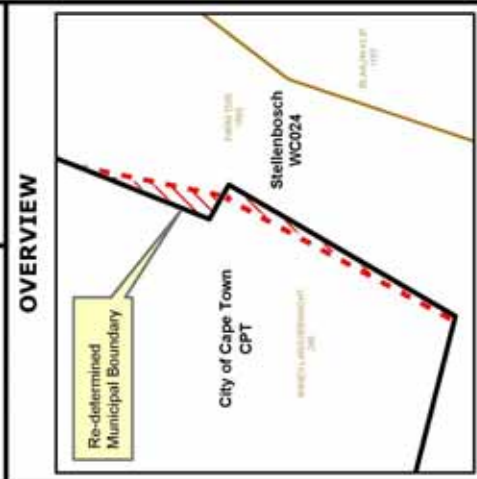


Where there is a discrepancy between the description and the map, the map will prevail.



MAP NUMBER
DEM6324

DATE
May 2018



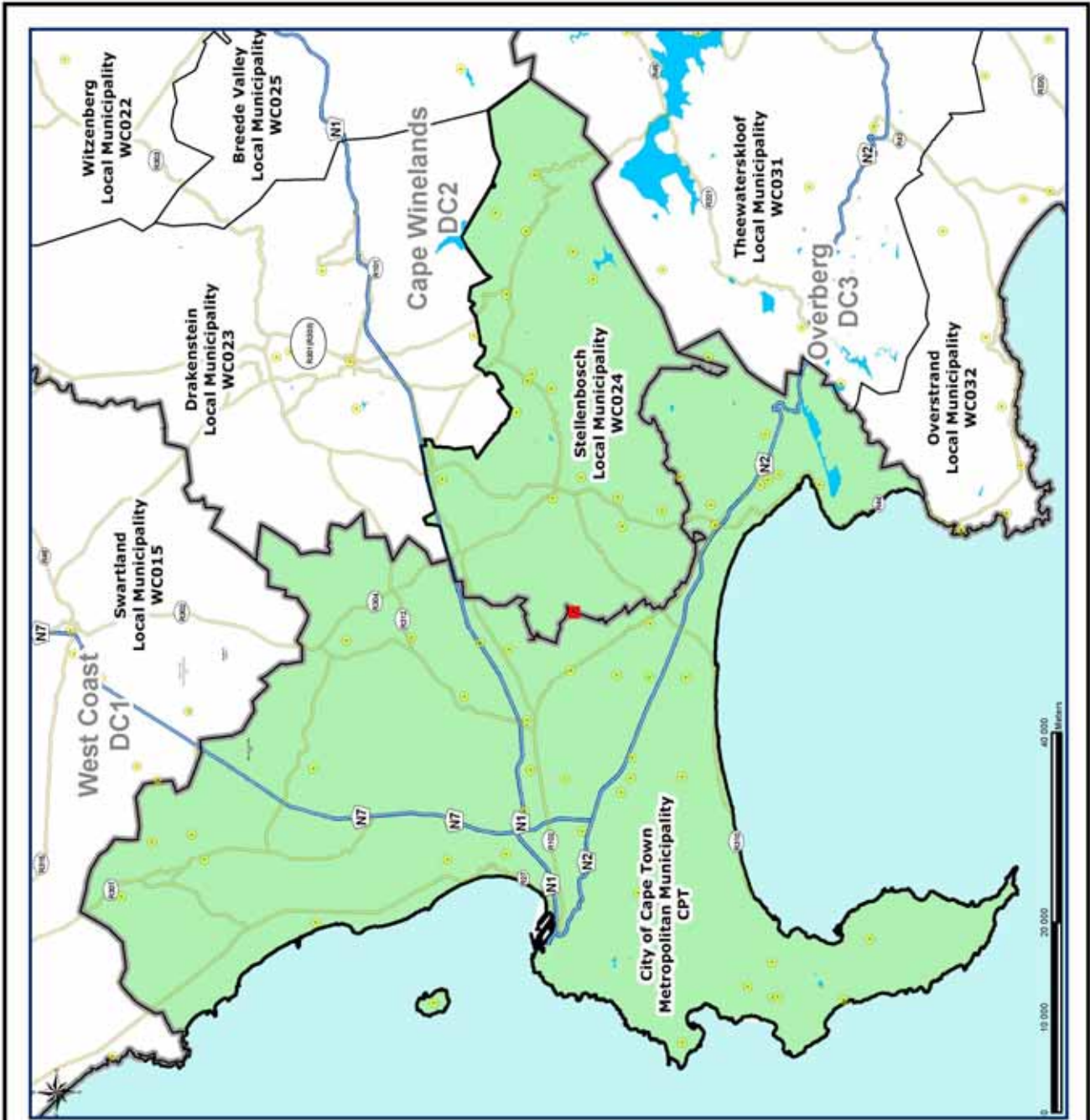
In terms of Section 21 of the Local Government: Municipal Demarcation Act, 1998 (Act No. 27 of 1998) the Municipal Demarcation Board has re-determined the municipal boundaries of Stellenbosch Local Municipality (WC024), Cape Winelands District Municipality (DC02) and City of Cape Town Metropolitan Municipality (CPT) by (1) excluding a portion of Farm 1565 from the municipal area of City of Cape Town Metropolitan Municipality (CPT) and by including it into the municipal areas of Stellenbosch Local Municipality (WC024) and Cape Winelands District Municipality (DC02); (2) excluding a portion of Farm Fairview 245 from the municipal areas of Stellenbosch Local Municipality (WC024), Cape Winelands District Municipality (DC02) and by including it into the municipal area of City of Cape Town Metropolitan Municipality (CPT).

Previous Boundary	Werts	Rivers
Local/Metro Municipalities	Sub Phase	National Roads
District Municipalities	Parent Farms	Main Roads
Dams	Subdivision	Main Phase

For more info regarding this map, you may contact:

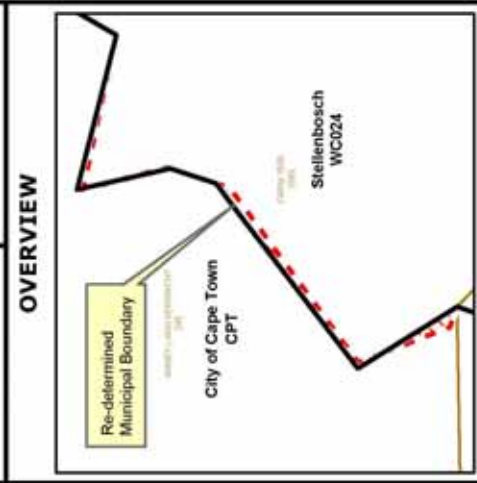
Daniël Sebake
 Tel: (021) 342 2481
 Fax: (021) 342 2480
 e-mail: danie@demarcation.org.za

Where there is a discrepancy between the description and the map, the map will prevail.



MAP NUMBER
DEM6325

DATE
May 2018



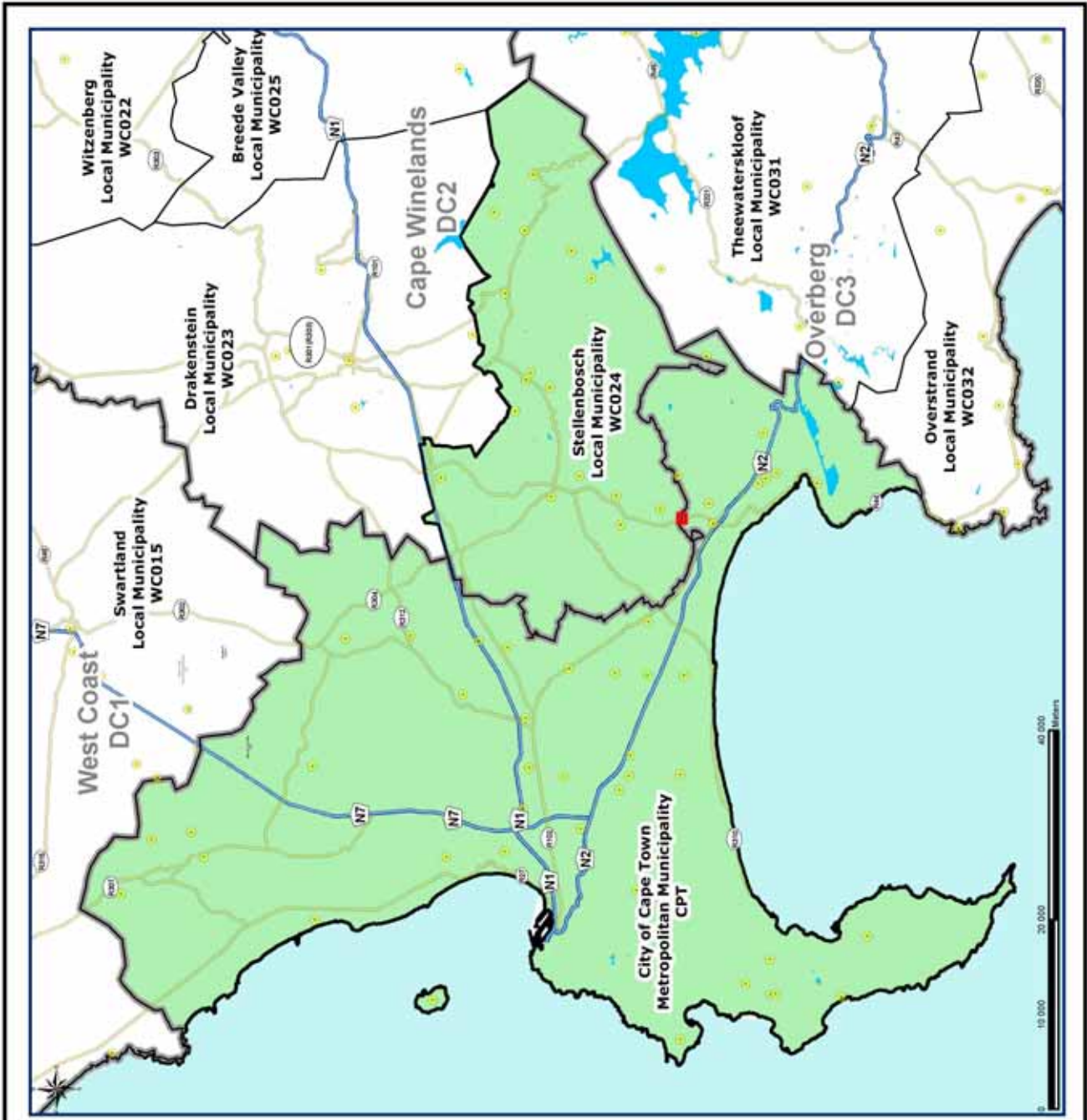
In terms of Section 21 of the Local Government: Municipal Demarcation Act, 1998 (Act No. 27 of 1998) the Municipal Demarcation Board has re-determined the municipal boundaries of Stellenbosch Local Municipality (WC024), Cape Winelands District Municipality (DC02) and City of Cape Town Metropolitan Municipality (CPT) by (1) excluding a portion of Farm 1565 from the municipal area of City of Cape Town Metropolitan Municipality (CPT) and by including it into the municipal areas of Stellenbosch Local Municipality (WC024) and Cape Winelands District Municipality (DC02); (2) excluding a portion of Farm Fairview 245 from the municipal areas of Stellenbosch Local Municipality (WC024), Cape Winelands District Municipality (DC02) and by including it into the municipal area of City of Cape Town Metropolitan Municipality (CPT).

- Previous Boundary
- Local/Metro Municipalities
- District Municipalities
- Dams
- Wards
- Sub-Phase
- Parent Farms
- Subdivision
- Rivers
- National Roads
- Main Roads
- Main Phase

For more info regarding this map, you may contact:

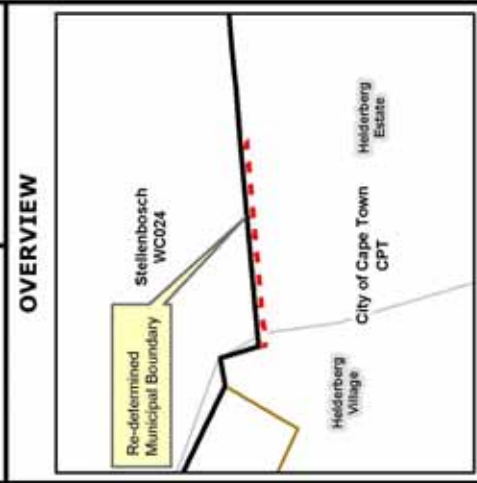
Daniël Sebake
Tel: (021) 342 2481
Fax: (021) 342 2480
e-mail: danie@demarcation.org.za

Where there is a discrepancy between the description and the map, the map will prevail.



MAP NUMBER
DEM6331

DATE
May 2018



In terms of Section 21 of the Local Government Municipal Demarcation Act, 1998 (Act No. 27 of 1998) the Municipal Demarcation Board has re-determined the municipal boundaries of Stellenbosch Local Municipality (WC024), Cape Winelands District Municipality (DC02) and City of Cape Town Metropolitan Municipality (CPT) by aligning the municipal boundary of City of Cape Town Metropolitan Municipality (CPT) and Stellenbosch Local Municipality (WC024), Cape Winelands District Municipality (DC02) to the southern boundary of Erf 222 of Raithby of Stellenbosch Allotment area.

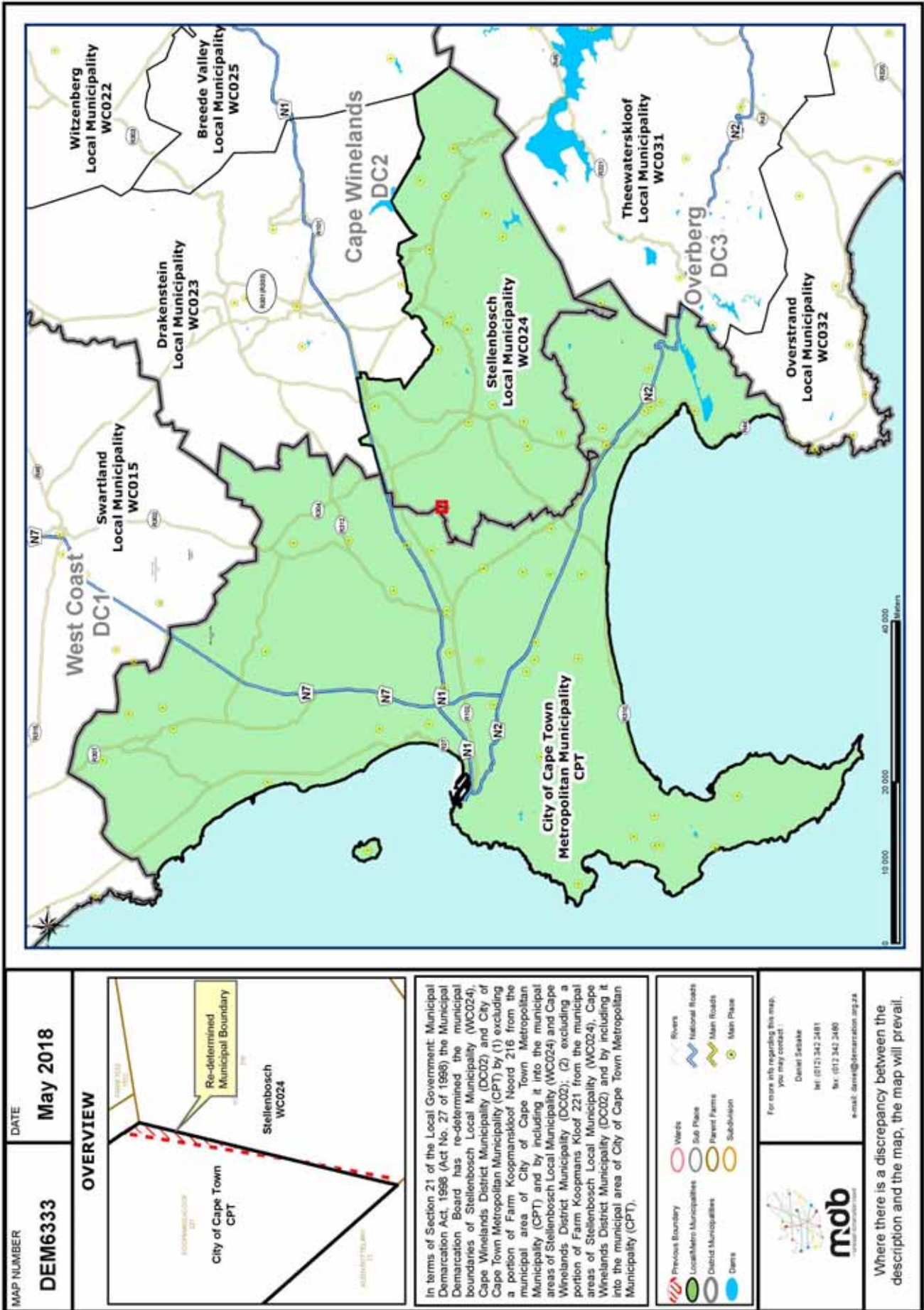
- Previous Boundary
- Local/Metro Municipalities
- District Municipalities
- Rivers
- Werts
- Sub Phase
- Parent Farms
- Subdivision
- National Roads
- Main Roads
- Main Phase
- Dams

For more info regarding this map, you may contact:

Daniël Sebake
 Tel: (021) 342 2481
 Fax: (021) 342 2480
 e-mail: danie@demarcation.org.za

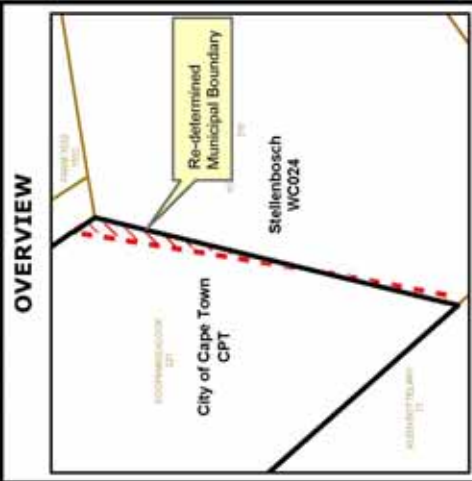


Where there is a discrepancy between the description and the map, the map will prevail.



MAP NUMBER
DEM6333

DATE
May 2018



In terms of Section 21 of the Local Government: Municipal Demarcation Act, 1998 (Act No. 27 of 1998), the Municipal Demarcation Board has re-determined the municipal boundaries of Stellenbosch Local Municipality (WC024), Cape Winelands District Municipality (DC02) and City of Cape Town Metropolitan Municipality (CPT) by (1) excluding a portion of Farm Koogmanskloof Noord 216 from the municipal area of City of Cape Town Metropolitan Municipality (CPT), and by including it into the municipal areas of Stellenbosch Local Municipality (WC024) and Cape Winelands District Municipality (DC02); (2) excluding a portion of Farm Koogmans Kloof 221 from the municipal areas of Stellenbosch Local Municipality (WC024), Cape Winelands District Municipality (DC02), and by including it into the municipal area of City of Cape Town Metropolitan Municipality (CPT).

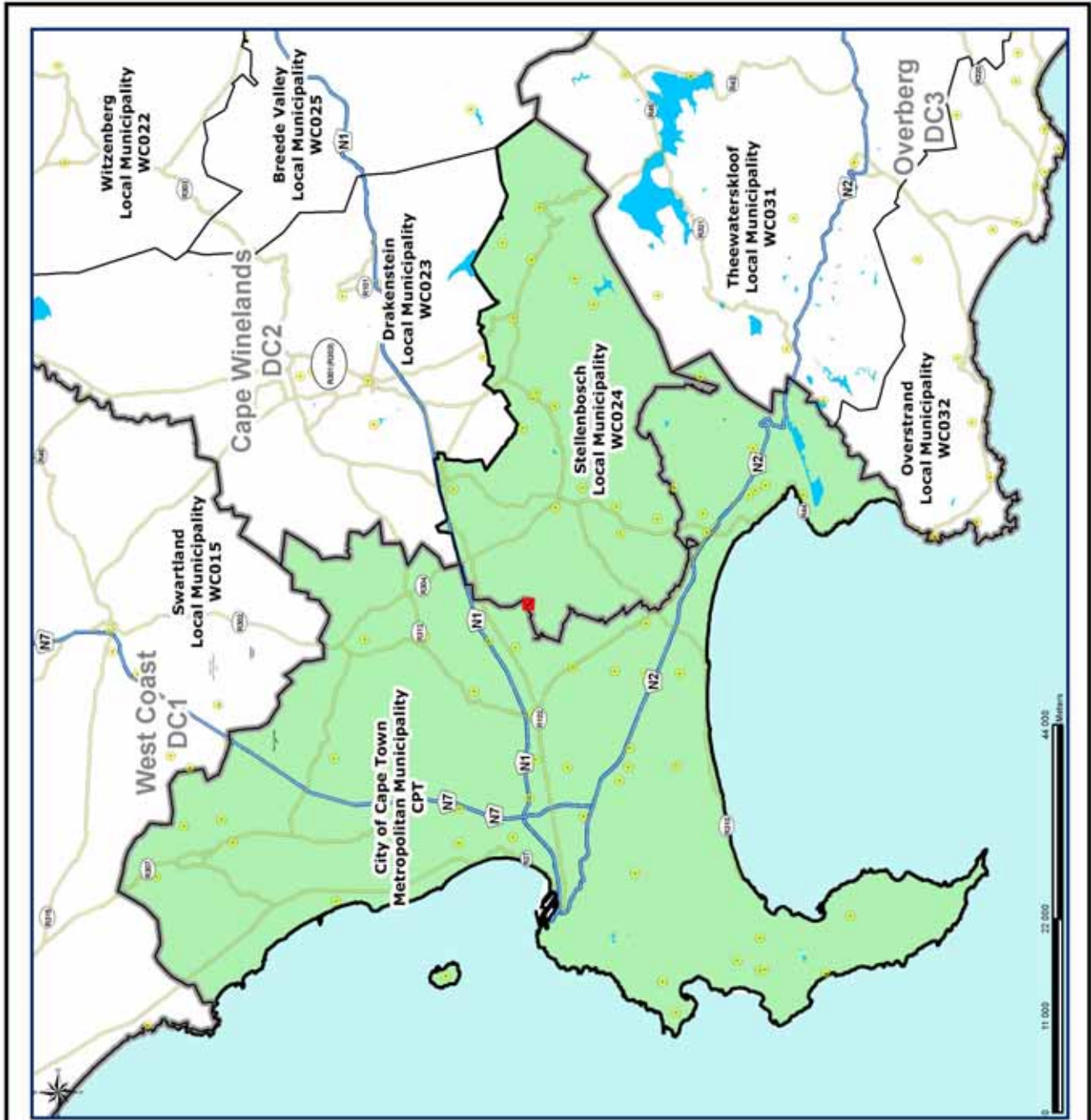
Previous Boundary	Wards	Rivers
Local/Metro Municipalities	Sub-Phase	National Roads
District Municipalities	Parent Farms	Main Roads
Dams	Subdivision	Main Phase

For more info regarding this map, you may contact:

mbd
Municipal Demarcation Board

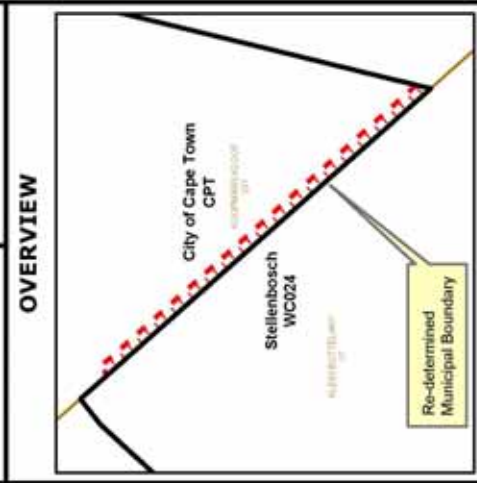
Daniël Sebake
Tel: (021) 342 2481
Fax: (021) 342 2480
e-mail: daniel@demarcation.org.za

Where there is a discrepancy between the description and the map, the map will prevail.



MAP NUMBER
DEM6334

DATE
May 2018



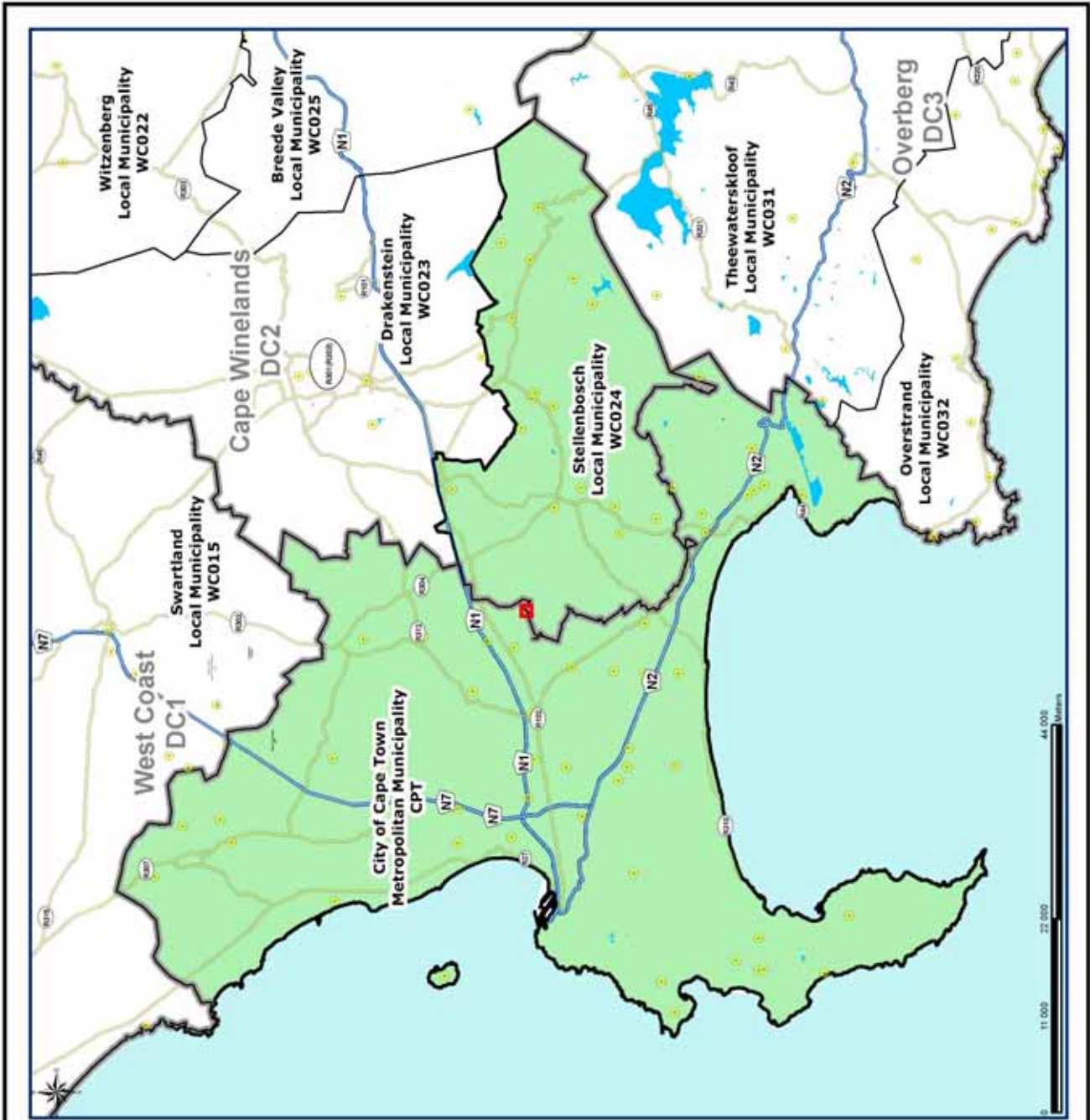
In terms of Section 21 of the Local Government Municipal Demarcation Act, 1998 (Act No. 27 of 1998) the Municipal Demarcation Board has re-determined the municipal boundaries of Stellenbosch Local Municipality (WC024), Cape Winelands District Municipality (DC02) and City of Cape Town Metropolitan Municipality (CPT) by excluding a portion of Farm Koopmans Kloof 221 from the municipal areas of Stellenbosch Local Municipality (WC024), Cape Winelands District Municipality (DC02) and by including it into the municipal area of City of Cape Town Metropolitan Municipality (CPT).

- Previous Boundary
- Local/Metro Municipalities
- District Municipalities
- Dams
- Wards
- Sub-Phase
- Parent Farms
- Subdivision
- Rivers
- National Roads
- Main Roads
- Main Phase

For more info regarding this map, you may contact:

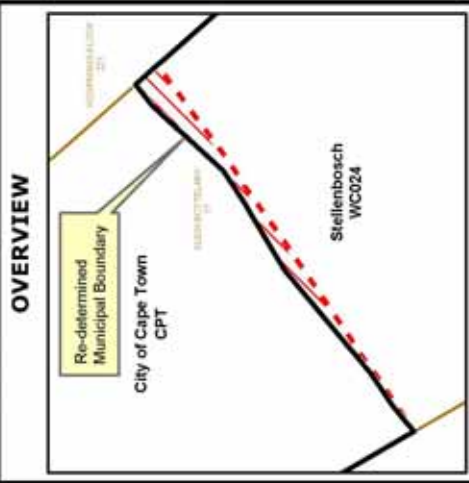
Daniël Sebake
Tel: (021) 342 2481
Fax: (021) 342 2480
e-mail: danie@demarcation.org.za

Where there is a discrepancy between the description and the map, the map will prevail.



MAP NUMBER
DEM6335

DATE
May 2018



In terms of Section 21 of the Local Government Municipal Demarcation Act, 1998 (Act No. 27 of 1998) the Municipal Demarcation Board has re-determined the municipal boundaries of Stellenbosch Local Municipality (WC024), Cape Winelands District Municipality (DC02) and City of Cape Town Metropolitan Municipality (CPT) by excluding a portion of 29 of Farm Klein Bottelary 17 from the municipal area of City of Cape Town Metropolitan Municipality (CPT) and by including it into the municipal areas of Stellenbosch Local Municipality (WC024) and Cape Winelands District Municipality (DC02).

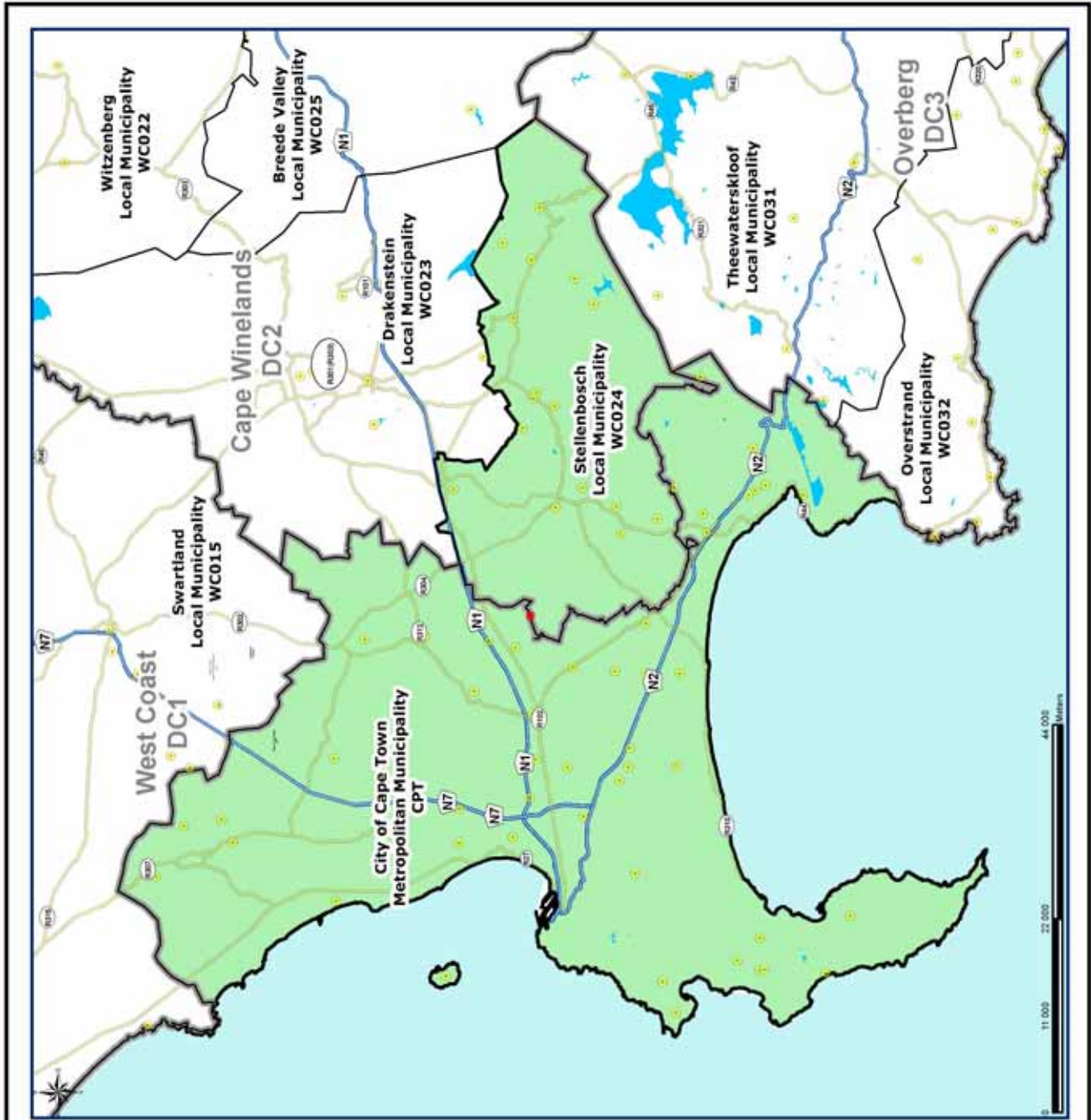
- Previous Boundary
- Local/Metro Municipalities
- District Municipalities
- Rivers
- Werts
- Local/Metro Municipalities
- District Municipalities
- Rivers
- National Roads
- Main Roads
- Main Phase
- Sub Phase
- Parent Farms
- Subdivision
- Main Phase
- Dams

For more info regarding this map, you may contact:

mbd
Municipal Demarcation Board

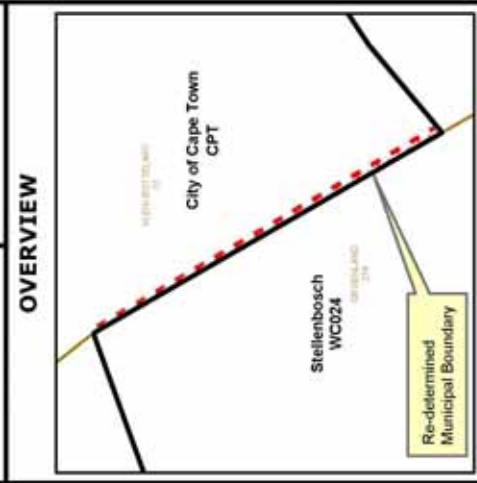
Daniel Sebake
Tel: (021) 342 2481
Fax: (021) 342 2480
e-mail: daniel@demarcation.org.za

Where there is a discrepancy between the description and the map, the map will prevail.



MAP NUMBER
DEM6336

DATE
May 2018



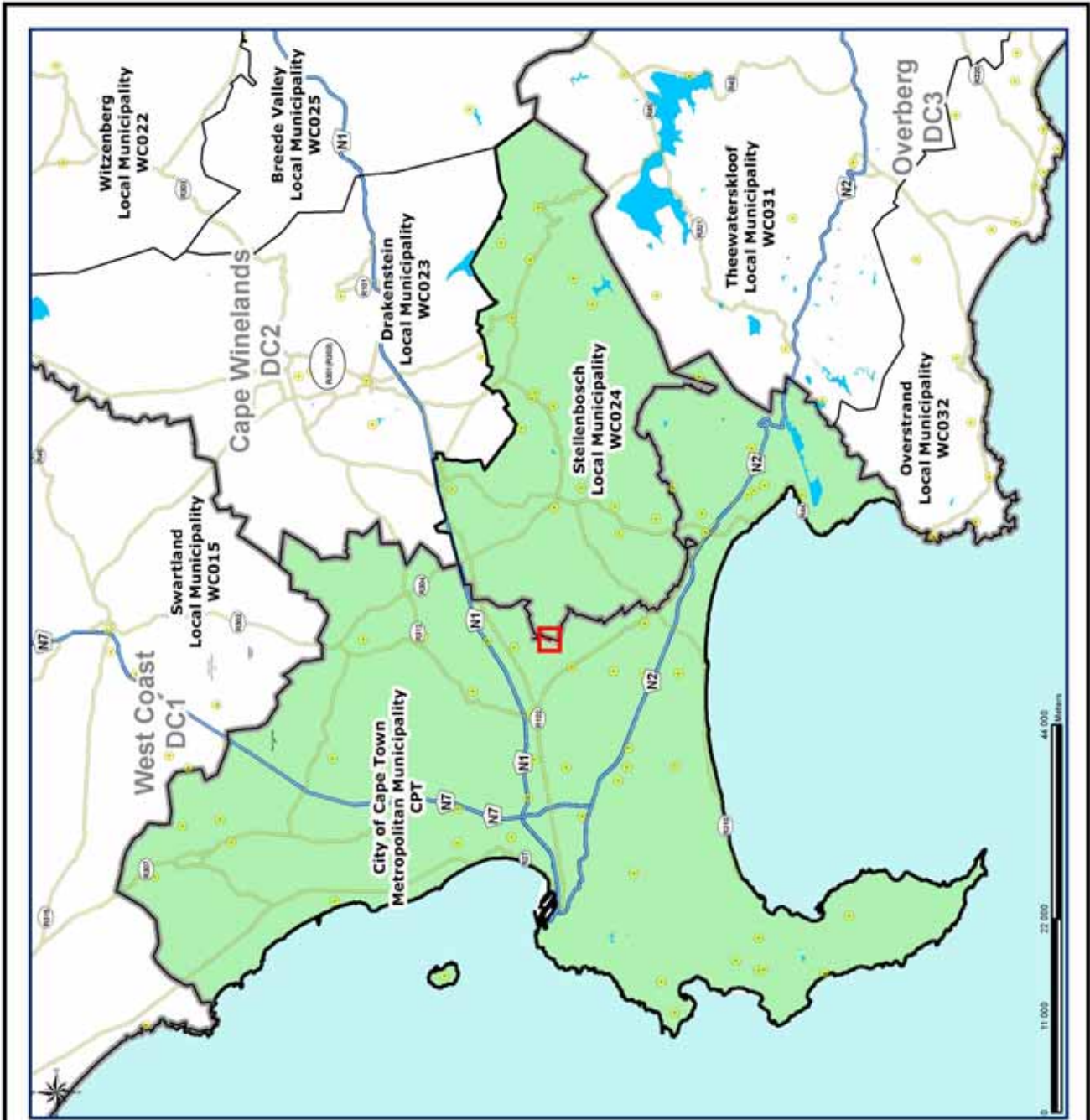
In terms of Section 21 of the Local Government Municipal Demarcation Act, 1998 (Act No. 27 of 1998) the Municipal Demarcation Board has re-determined the municipal boundaries of Stellenbosch Local Municipality (WC024), Cape Winelands District Municipality (DC02) and City of Cape Town Metropolitan Municipality (CPT) by excluding a portion of Farm Klein Bottelary 17 from the municipal areas of Stellenbosch Local Municipality (WC024), Cape Winelands District Municipality (DC02) and by including it into the municipal area of City of Cape Town Metropolitan Municipality (CPT).

- Previous Boundary
- Local/Metro Municipalities
- District Municipalities
- Dams
- Wards
- Sub-Phase
- Parent Farms
- Subdivision
- Rivers
- National Roads
- Main Roads
- Main Phase

For more info regarding this map, you may contact:

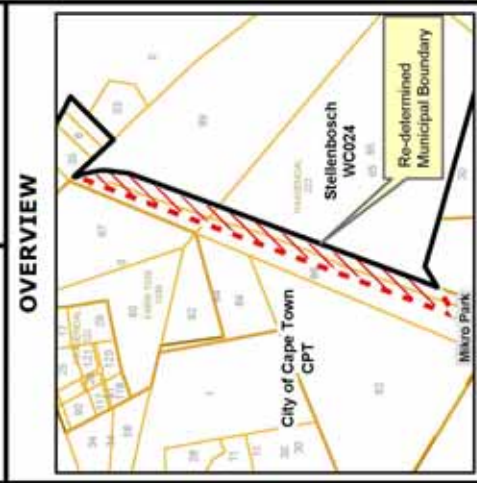
Daniël Sebake
 Tel: (021) 342 2481
 Fax: (021) 342 2480
 e-mail: danie@demarcation.org.za

Where there is a discrepancy between the description and the map, the map will prevail.



MAP NUMBER
DEM6338

DATE
May 2018



In terms of Section 21 of the Local Government Municipal Demarcation Act, 1998 (Act No. 27 of 1998) the Municipal Demarcation Board has re-determined the municipal boundaries of Stellenbosch Local Municipality (WC024), Cape Winelands District Municipality (DC02) and City of Cape Town Metropolitan Municipality (CPT) by excluding portions 99, 105, 106 and 112 of the farm Haasendal 222 from the municipal areas of Stellenbosch Local Municipality (WC024), Cape Winelands District Municipality (DC02) and by including them into the municipal area of the City of Cape Town Metropolitan Municipality (CPT).

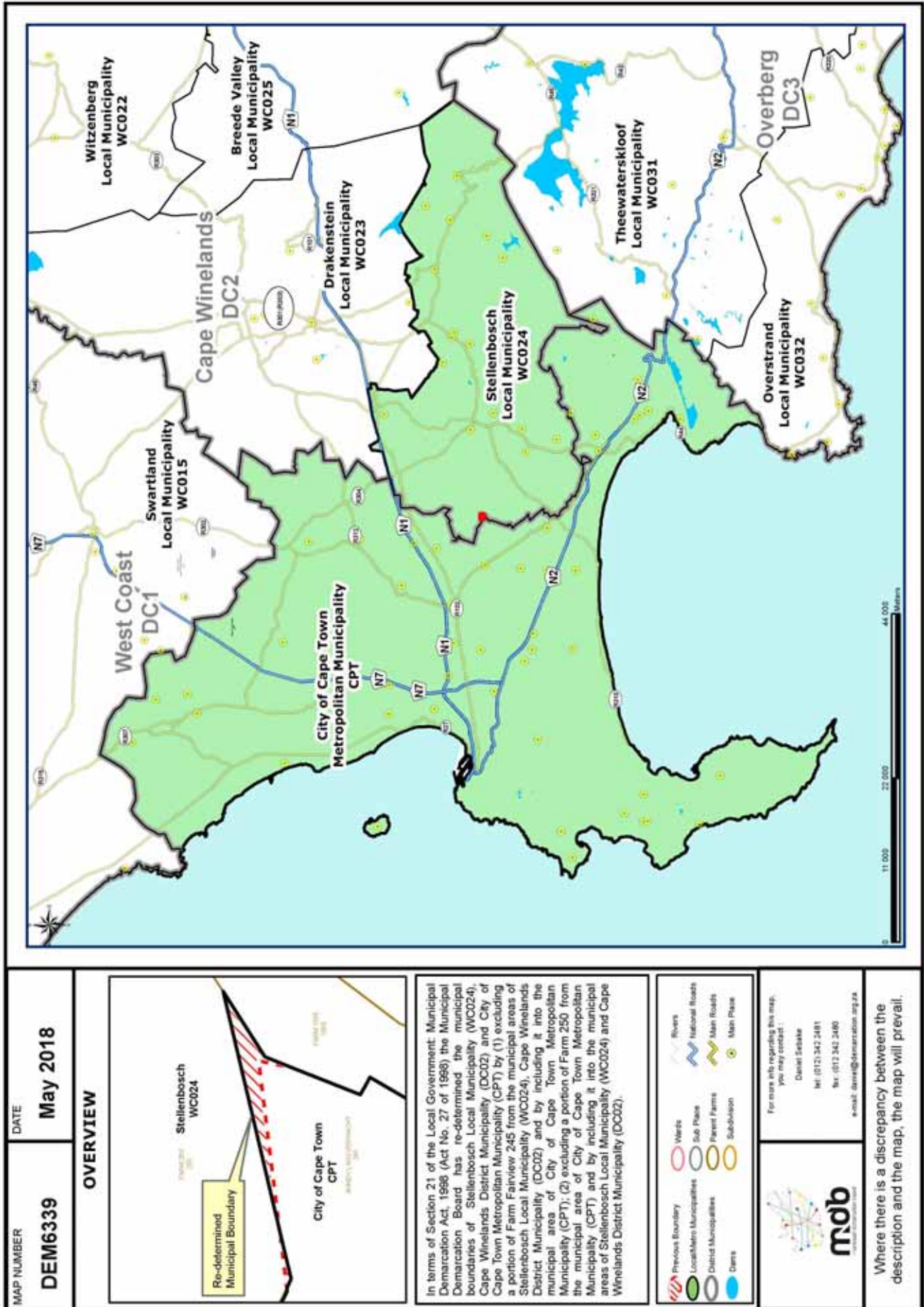
- Previous Boundary
- Local/Metro Municipalities
- District Municipalities
- Rivers
- Werts
- Sub-Phase
- National Roads
- Main Roads
- Main Phase
- Parent Farms
- Subdivision
- Dams

For more info regarding this map, you may contact:

Daniël Sebake
 Tel: (021) 342 2481
 Fax: (021) 342 2480
 e-mail: danie@demarcation.org.za

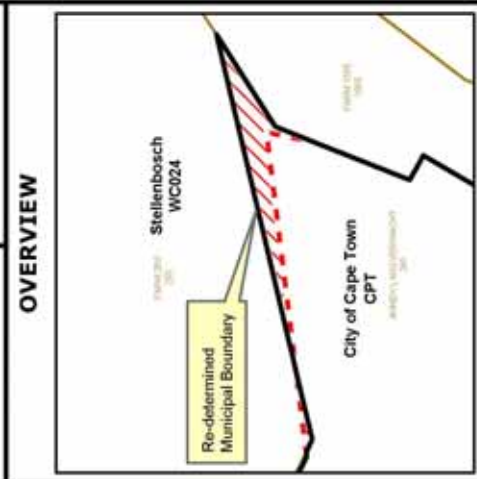


Where there is a discrepancy between the description and the map, the map will prevail.



MAP NUMBER
DEM6339

DATE
May 2018



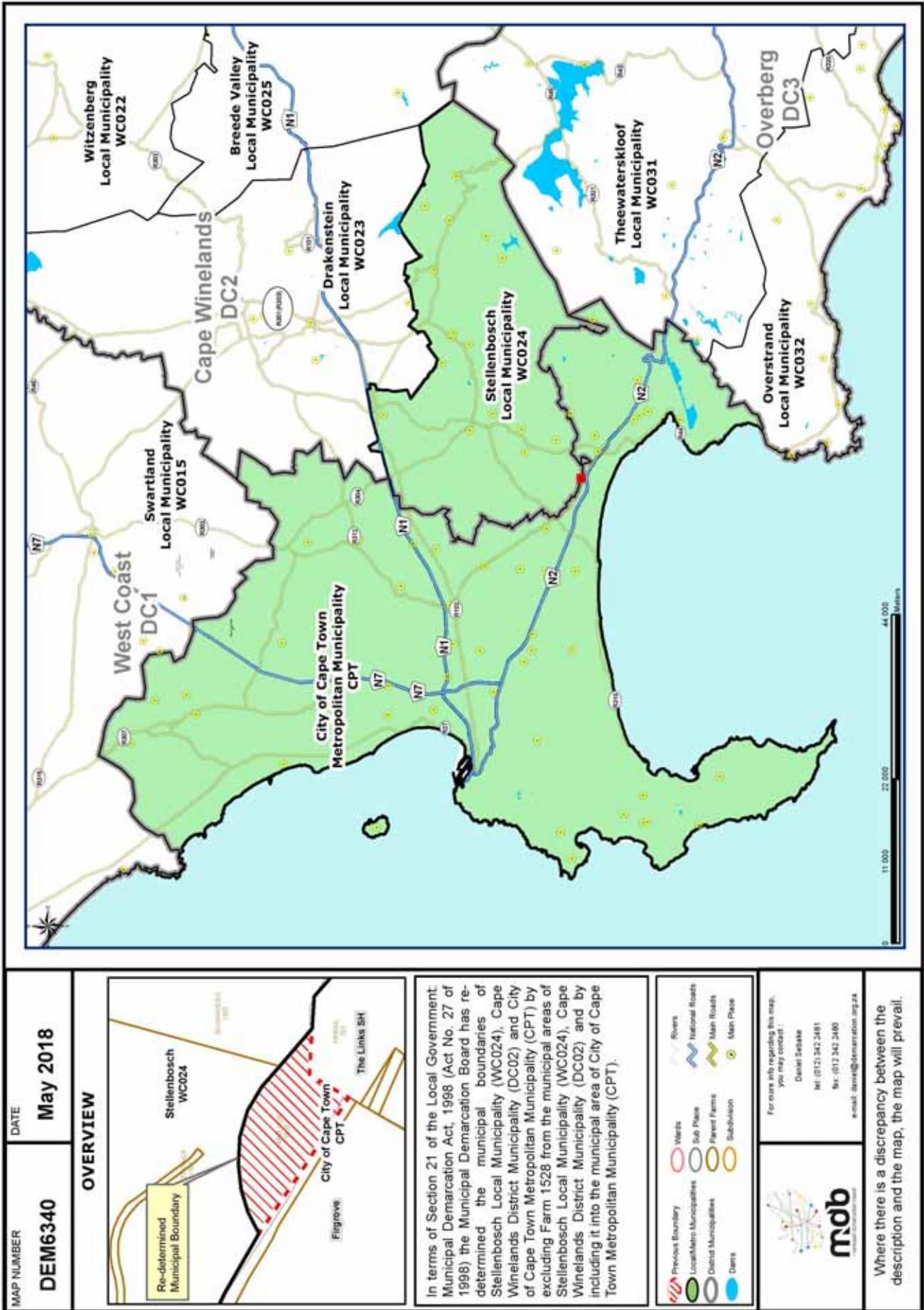
In terms of Section 21 of the Local Government: Municipal Demarcation Act, 1998 (Act No. 27 of 1998) the Municipal Demarcation Board has re-determined the municipal boundaries of Stellenbosch Local Municipality (WC024), Cape Winelands District Municipality (DC02) and City of Cape Town Metropolitan Municipality (CPT) by (1) excluding a portion of Farm Fairview 245 from the municipal areas of Stellenbosch Local Municipality (WC024), Cape Winelands District Municipality (DC02) and by including it into the municipal area of City of Cape Town Metropolitan Municipality (CPT); (2) excluding a portion of Farm 250 from the municipal area of City of Cape Town Metropolitan Municipality (CPT) and by including it into the municipal areas of Stellenbosch Local Municipality (WC024) and Cape Winelands District Municipality (DC02).

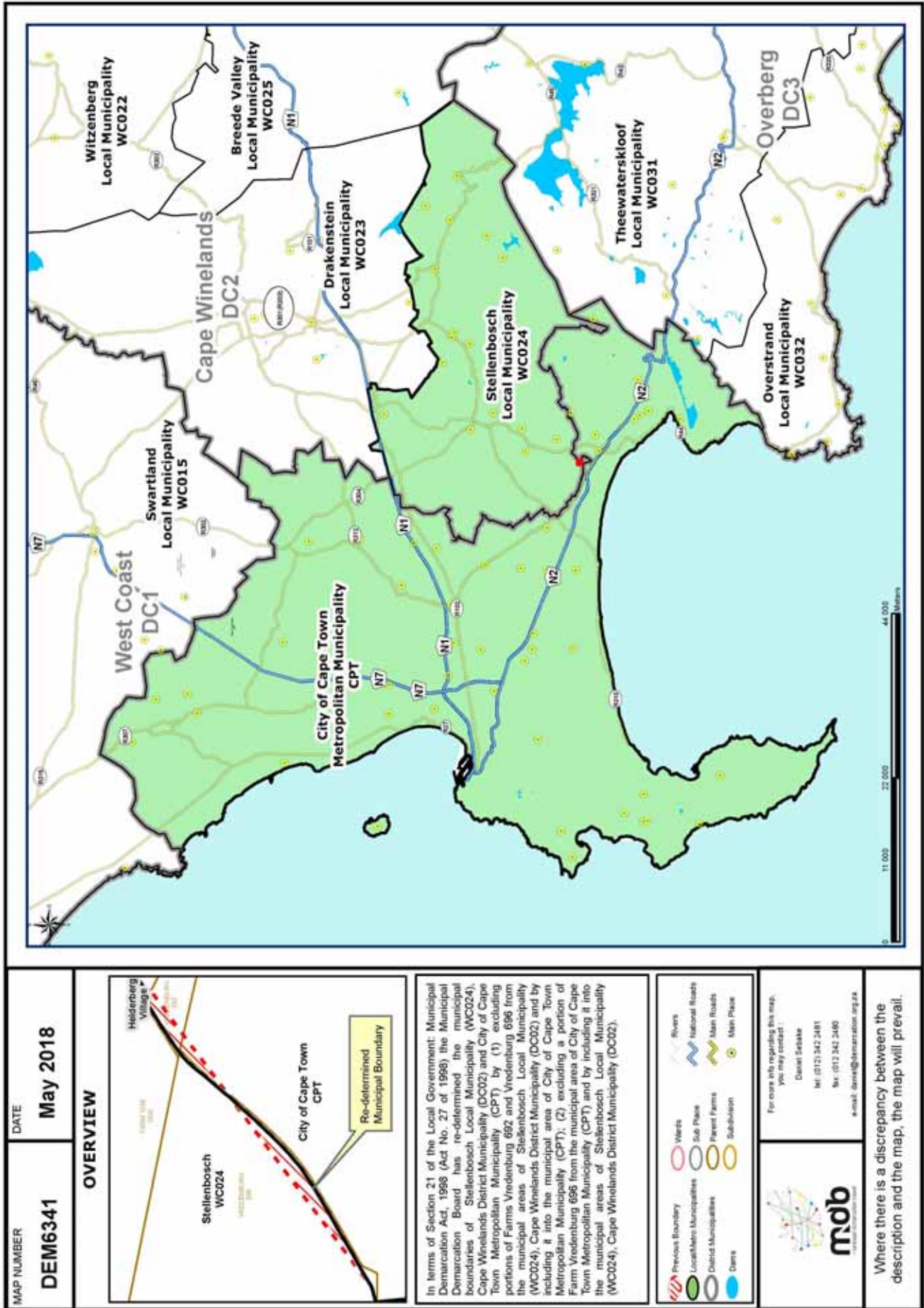
- Previous Boundary
- Local/Metro Municipalities
- District Municipalities
- Dams
- Werts
- Sub-Phase
- Parent Farms
- Sub-division
- Rivers
- National Roads
- Main Roads
- Main Phase

For more info regarding this map, you may contact:

Daniël Sebake
Tel: (021) 342 2481
Fax: (021) 342 2480
e-mail: danie@demarcation.org.za

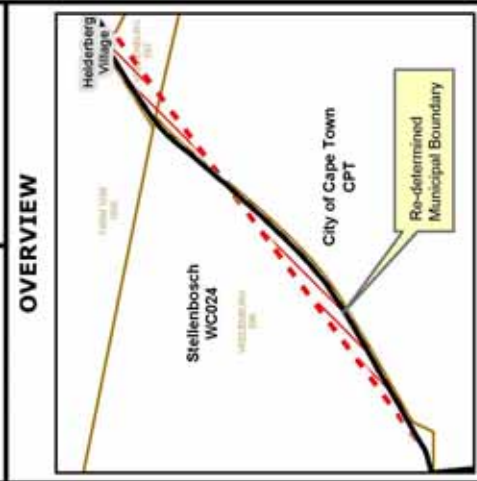
Where there is a discrepancy between the description and the map, the map will prevail.





MAP NUMBER
DEM6341

DATE
May 2018



In terms of Section 21 of the Local Government: Municipal Demarcation Act, 1998 (Act No. 27 of 1998), the Municipal Demarcation Board has re-determined the municipal boundaries of Stellenbosch Local Municipality (WC024), Cape Winelands District Municipality (DC02) and City of Cape Town Metropolitan Municipality (CPT) by (1) excluding portions of Farnis Vredenburg 692 and Vredenburg 696 from the municipal areas of Stellenbosch Local Municipality (WC024), Cape Winelands District Municipality (DC02) and by including it into the municipal area of City of Cape Town Metropolitan Municipality (CPT); (2) excluding a portion of Farm Vredenburg 696 from the municipal area of City of Cape Town Metropolitan Municipality (CPT) and by including it into the municipal areas of Stellenbosch Local Municipality (WC024), Cape Winelands District Municipality (DC02).

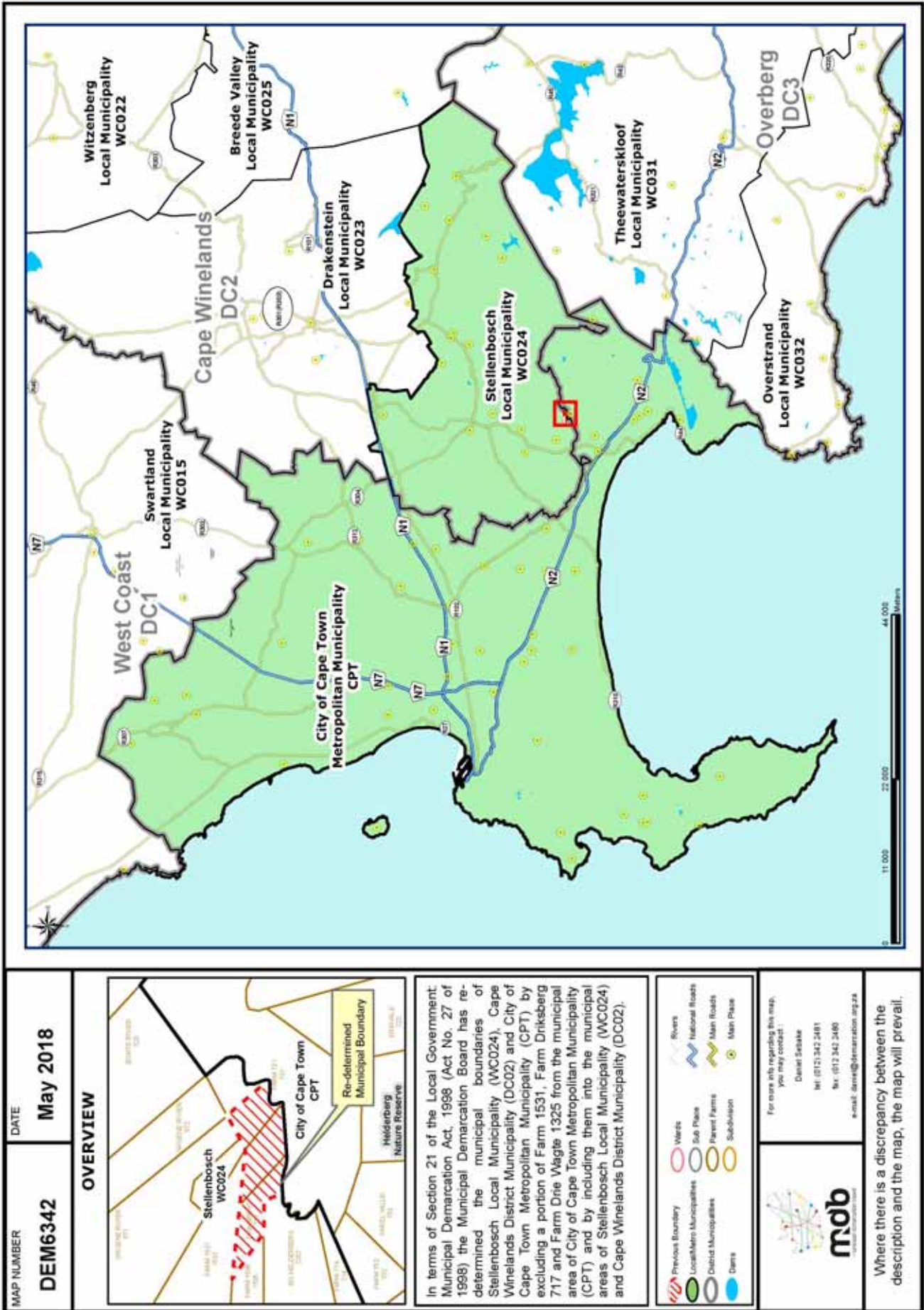
- Previous Boundary
- Local/Metro Municipalities
- District Municipalities
- Dams
- Wards
- Sub-Phase
- Rivers
- National Roads
- Main Roads
- Main Phase
- Parent Farms
- Sub-Phase

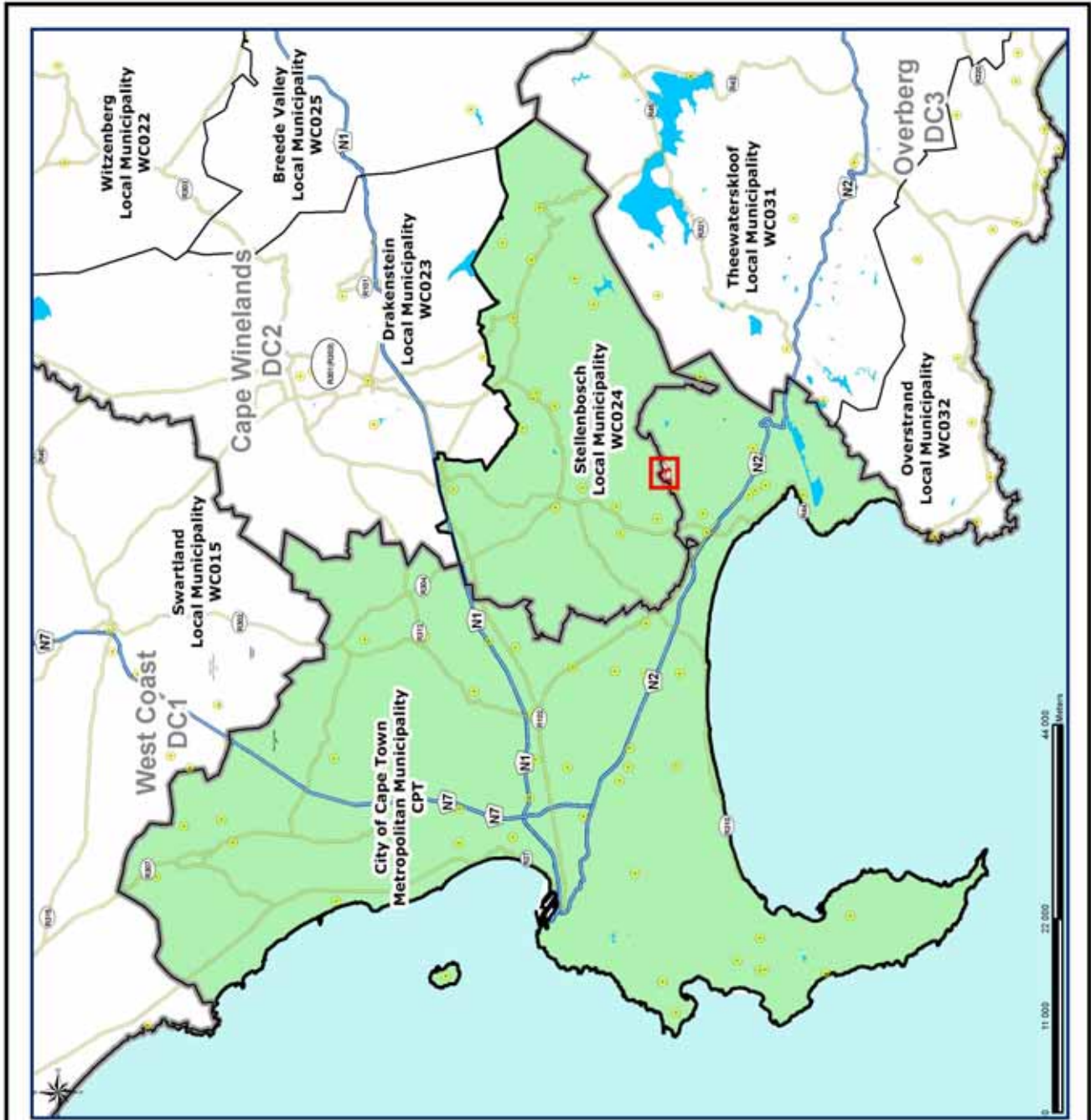
For more info regarding this map, you may contact:

Daniël Sebake
 Tel: (021) 342 2481
 Fax: (021) 342 2480
 e-mail: danie@demarcation.org.za



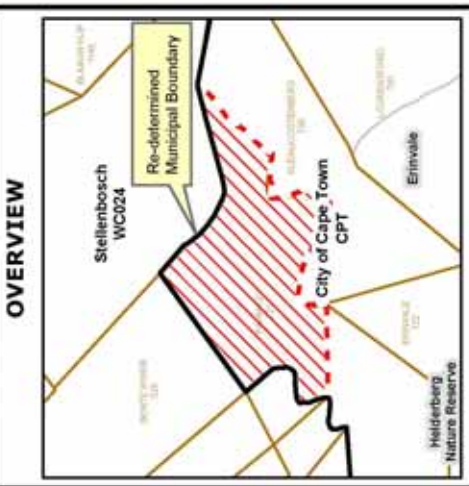
Where there is a discrepancy between the description and the map, the map will prevail.





MAP NUMBER
DEM6343

DATE
May 2018



In terms of Section 21 of the Local Government Municipal Demarcation Act, 1998 (Act No. 27 of 1998) the Municipal Demarcation Board has re-determined the municipal boundaries of Stellenbosch Local Municipality (WC024), Cape Winelands District Municipality (DC02) and City of Cape Town Metropolitan Municipality (CPT) by excluding a portion of Farm Heifor 721 from the municipal areas of Stellenbosch Local Municipality (WC024), Cape Winelands District Municipality (DC02) and by including it into the municipal area of City of Cape Town Metropolitan Municipality (CPT).

- Previous Boundary
- Local/Metro Municipalities
- District Municipalities
- Rivers
- Werts
- Sub-Phase
- Main Phase
- National Roads
- Main Roads
- Main Phase
- Parent Farms
- Subdivision
- Main Phase

For more info regarding this map, you may contact:

Daniël Sebake
 Tel: (021) 342 2481
 Fax: (021) 342 2480
 e-mail: daniel@demarcation.org.za



Where there is a discrepancy between the description and the map, the map will prevail.

