

Provincial Gazette

Provinsiale Koerant

8067

8067

Friday, 22 March 2019

Vrydag, 22 Maart 2019

Registered at the Post Office as a Newspaper

As 'n Nuusblad by die Poskantoor Geregistreer

CONTENTS

INHOUD

(*Reprints are obtainable at Room M12, Provincial Legislature Building, 7 Wale Street, Cape Town 8001.)

(*Herdrukke is verkrygbaar by Kamer M12, Provinsiale Wetgewing-gebou, Waalstraat 7, Kaapstad 8001.)

No.		Page
Provincial Notices		
34	Department of Environmental Affairs and Development Planning: Declaration of Helderberg Nature Reserve	198
35	Department of Environmental Affairs and Development Planning: Declaration of False Bay Nature Reserve	211
Tenders:		
	Notices	241
Local Authorities		
	Beaufort West Municipality: Correction Notice	252
	Breede Valley Municipality: Removal of Restrictions, Consent Use and Departure	252
	City of Cape Town (Table Bay District): Closure	255
	Department of Environmental Affairs and Development Planning: Approval Granted	245
	Department of Environmental Affairs and Development Planning: Approval Granted	246
	Department of Environmental Affairs and Development Planning: Approval Granted	248
	Department of Environmental Affairs and Development Planning: Approval Granted	249
	Department of Environmental Affairs and Development Planning: Approval Granted	251
	George Municipality: Closure	241
	Le Roux van der Merwe Incorporated: Business Notice	244
	Local Government: Municipal Structures Act, 1998	
	George Municipality: Amendment Notice	258
	Matzikama Municipality: Amendment	243
	Mossel Bay Municipality: Public Notice	242
	Stellenbosch Municipality: Public Notice	241
	Swartland Municipality: Removal of Restrictions	242
	Western Cape Gambling and Racing Board: Notice	253

Nr.		Bladsy
Provinsiale Kennisgewings		
34	Departement van Omgewingsake en Ontwikkelingsbeplanning: Verklaring van Helderberg Natuurreservaat	203
35	Departement van Omgewingsake en Ontwikkelingsbeplanning: Verklaring van Valsbaai Natuurreservaat	220
Tenders:		
	Kennisgewings	241
Plaaslike Owerhede		
	Beaufort-Wes Munisipaliteit: Regstellingskennisgewing	252
	Breedevallei Munisipaliteit: Opheffing van Beperkings, Vergunningsgebruik en Afwyking	252
	Stad Kaapstad (Tafelbaai-Distrik): Sluiting	255
	Departement van Omgewingsake en Ontwikkelingsbeplanning: Goedkeuring Toegestaan	245
	Departement van Omgewingsake en Ontwikkelingsbeplanning: Goedkeuring Toegestaan	247
	Departement van Omgewingsake en Ontwikkelingsbeplanning: Goedkeuring Toegestaan	248
	Departement van Omgewingsake en Ontwikkelingsbeplanning: Goedkeuring Toegestaan	250
	Departement van Omgewingsake en Ontwikkelingsbeplanning: Goedkeuring Toegestaan	251
	George Munisipaliteit: Sluiting	241
	Le Roux van der Merwe Incorporated: Business Notice (English only)	244
	Plaaslike Regering: Munisipale Strukture, 1998	
	George Munisipaliteit: Wysigingskennisgewing	258
	Matzikama Munisipaliteit: Wysiging	243
	Mosselbaai Munisipaliteit: Publieke Kennisgewing	242
	Stellenbosch Munisipaliteit: Openbare Kennisgewing	241
	Swartland Munisipaliteit: Opheffing van Beperkings	242
	Wes-Kaapse Raad op Dobbelaar en Wedrenne: Kennisgewing ..	254

PROVINCIAL NOTICE

The following Provincial Notices are published for general information.

ADV. B. GERBER,
DIRECTOR-GENERAL

Provincial Legislature Building,
Wale Street,
Cape Town.

PROVINSIALE KENNISGEWING

Die volgende Provinsiale Kennisgewings word vir algemene inligting gepubliseer.

ADV. B. GERBER,
DIREKTEUR-GENERAAL

Provinsiale Wetgewer-gebou,
Waalstraat,
Kaapstad.

ISAZISO SEPHONDO

Esi saziso silandelayo sipapashelwe ukunika ulwazi ngokubanzi.

ADV. B. GERBER,
UMLAWULI-JIKELELE

ISakhiwo sePhondo,
Wale Street,
eKapa.

PROVINCIAL NOTICE

P.N. 34/2019

22 March 2019

DEPARTMENT OF ENVIRONMENTAL AFFAIRS AND DEVELOPMENT PLANNING**NATIONAL ENVIRONMENTAL MANAGEMENT: PROTECTED AREAS ACT, 2003 (ACT 57 OF 2003)****DECLARATION OF HELDERBERG NATURE RESERVE**

I, Anton Bredell, Provincial Minister of Local Government, Environmental Affairs and Development Planning in the Western Cape, under section 23(1)(a)(i) of the National Environmental Management: Protected Areas Act, 2003 (Act 57 of 2003), declare a nature reserve on:—

1. Remainder of Erf 2597 Somerset West, in the City of Cape Town, Stellenbosch Division, Western Cape Province;
In extent: 269, 1007 (Two Hundred and Sixty-Nine comma One Zero Zero Seven) Hectares;
Held by Deed of Transfer No. T12588/1947;
2. Erf 2695 Somerset West, in the City of Cape Town, Stellenbosch Division, Western Cape Province;
In extent: 37, 1978 (Thirty-Seven comma One Nine Seven Eight) Hectares;
Held by Deed of Transfer No. T12588/1947; and
3. Erf 5941 Somerset West, in the City of Cape Town, Stellenbosch Division, Western Cape Province;
In extent: 4, 9336 (Four comma Nine Three Three Six) Hectares;
Held by Deed of Transfer No. T78947/2016.

I assign the name “**Helderberg Nature Reserve**” to the reserve, of which the boundaries are reflected on the Surveyor-General diagram numbers 1634/2012, 687/1908 and 3598/1972 as set out in the Schedule.

Signed at Cape Town this 11th day of March 2019.

MR AW BREDELL

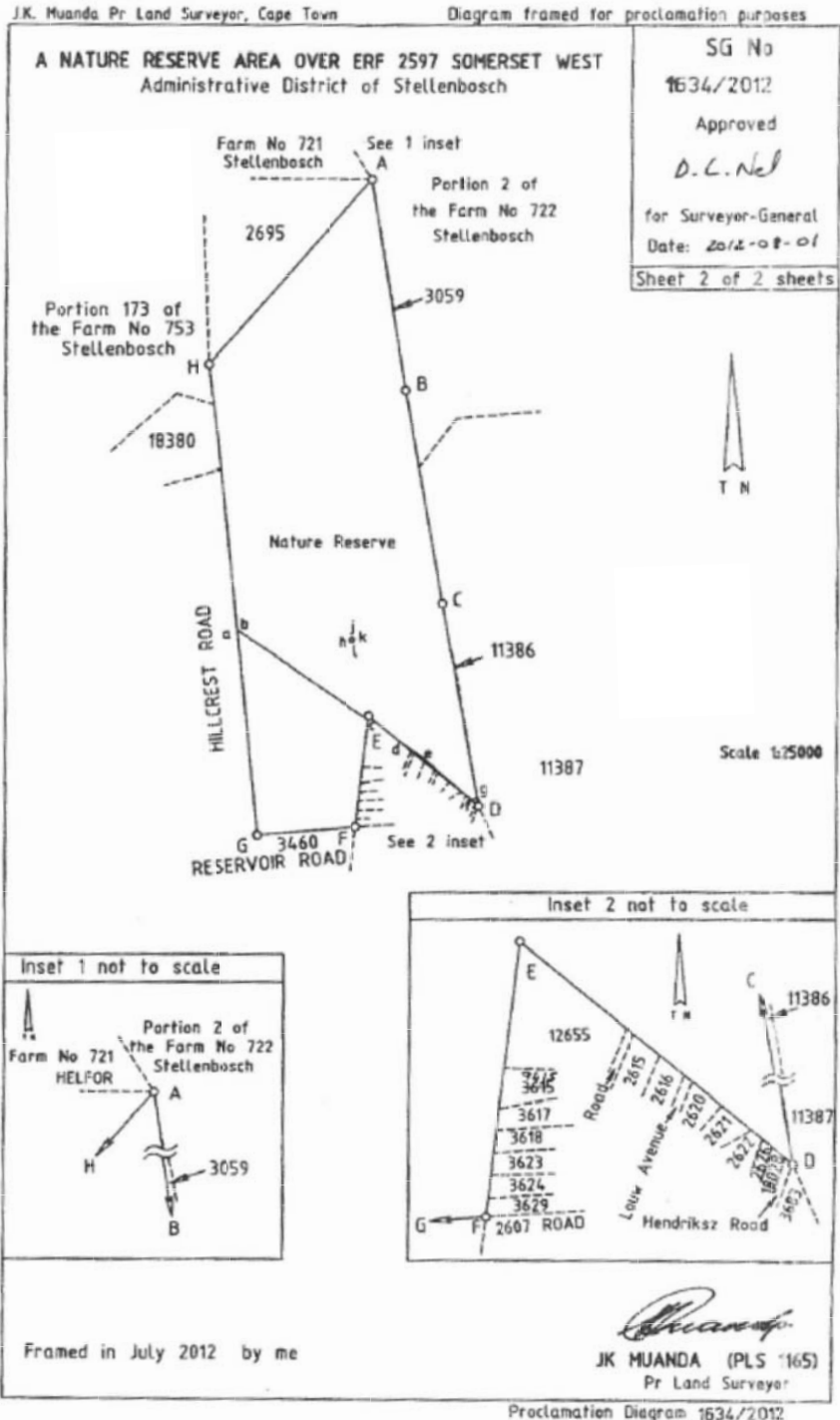
PROVINCIAL MINISTER OF LOCAL GOVERNMENT, ENVIRONMENTAL AFFAIRS AND DEVELOPMENT PLANNING

SCHEDULE

CERTIFIED COPY FOR REGISTRATION
 FOR SURVAYOR: *[Signature]*
 DATE: 01 AUG 2012

SIDES Metres		ANGLES OF DIRECTION		CO-ORDINATES Y System WG 19 80		SG No	
		Constants		+ 0.00		1634/2012	
A B	1046,06	350 51 30	A	+ 11633.81	+ 3700000.00	Approved	
B C	1071,18	350 24 00	B	+ 11467.63	+ 68323.53	<i>D.L. Nel</i>	
C D	1007,28	349 56 30	C	+ 11288.97	+ 70412.49	for Surveyor-General	
D E	689,30	129 45 40	D	+ 11113.05	+ 71404.29	2012-08-01	
E F	549,47	6 25 40	E	+ 11642.93	+ 70963.43	Sheet 1 of 2 sheets	
F G	475,74	85 08 00	F	+ 11704.44	+ 71509.45		
G H	2332,75	174 10 22	G	+ 12178.46	+ 71549.81		
H A	1196,16	220 47 40	H	+ 12415.30	+ 69229.11		
		16888 ⊕		+ 12269.44	+ 70735.86		
		23888 ⊕		+ 11153.19	+ 71491.19		
<p>Servitude Notes</p> <ol style="list-style-type: none"> The lines abc and defj represent the middle of an Electric Power Line servitude vide diagram 883/1941 Annexed to D/S 1941-333 The figure hjkl represents a Leasehold Area vide diagram 5909/1994 Annexed to D/S 							
<p>The figure A B C D E F G H represents approximately 253 Hectares of land, being A NATURE RESERVE AREA OVER ERF 2597 SOMERSET WEST Situate in the City of Cape Town Administrative District of Stellenbosch Province of the Western Cape Framed for the purposes of proclaiming a Nature Reserve in terms of Section 21-(3) of the National Environmental Management Protected Area Act, 57 of 2003 in July 2012 by me * 23 (1) <i>[Signature]</i> JK MUANDA (PLS 1165) Pr Land Surveyor</p>							
This diagram is annexed to No dated i.f.o. Registrar of Deeds		The original diagram is No 383/1893 Annexed to: Stel. Q. 19-7 -AH2BA-Y5 (M267)		SG File No S/2398/54 S.R. No. Framed Comps: AHNE-3282 (M2253) AHNE-3281 (M2252) AHNE-3253 (M2251) AHNE-3251 (M3386) AHNE-32 (M2258)			

CERTIFIED COPY FOR REGISTRATION
 FOR SURVEYOR-GENERAL
 DATE: 01 AUG 2012

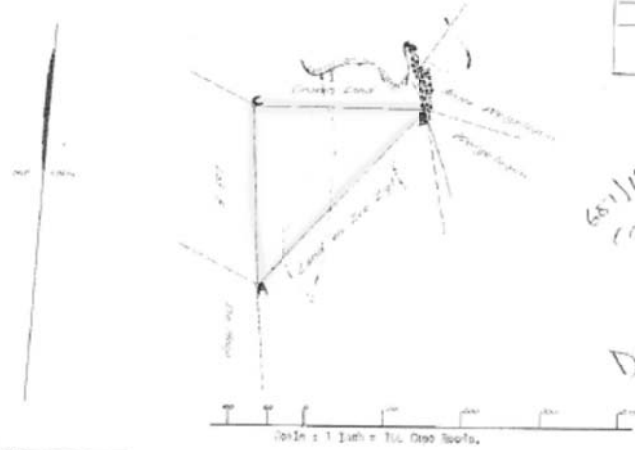


S.G. No. 601/1908

The numerical data of this plan are sufficiently accurate, (C-1.) P. C. No. 1908-100.

Sides.	Angles.
AB 316.76	A 14.35.36
BC 222.50	B 47.51.0
CA 234.23	C 77.44.36

Coordinates.	
A	+ 52.50 - 45.02
B	+ 47.55 - 412.10
C	+ 62.69 - 232.63



601/1908
 not taken
 of use 32
 Dug it up

S.G. No. 601/1908

The above plan, A.C. represents 43 Hectare 257 Square Rods of Crown Land, situate near Geyser West in the Oudtshoorn Division, being "Aank Land on the 21st".

Bound S. by Crown Land,
 E. by "Land on the 21st",
 W. by Lot F.

Diagram not bound to be accurate to scale.

(Sgt.) W. Verbeek,
 Government Land Surveyor,
 December 1897.

Copy of plan
 to Oudtshoorn 21.4.1908
 19.8.1999

100
 100

C
 2695



PROVINSIALE KENNISGEWING

P.K. 34/2019

22 Maart 2019

DEPARTEMENT VAN OMGEWINGSAKE EN ONTWIKKELINGSBEPLANNING
 "NATIONAL ENVIRONMENTAL MANAGEMENT: PROTECTED AREAS ACT, 2003" (WET 57 VAN 2003)
 VERKLARING VAN HELDERBERG NATUURRESERVAAT

Ek, Anton Bredell, Provinsiale Minister van Plaaslike Regering, Omgewingsake en Ontwikkelingsbeplanning in die Wes-Kaap, kragtens artikel 23(1)(a)(i) van die "National Environmental Management: Protected Areas Act, 2003" (Wet 57 van 2003), verklaar 'n natuurreservaat op:—

1. Restant van Erf 2597 Somerset-Wes, in die Stad Kaapstad, Afdeling Stellenbosch, Provinsie Wes-Kaap; Groot: 269, 1007 (Twee Honderd Nege en Sestig komma Een Nul Nul Sewe) Hektaar; Gehou kragtens Transportakte Nr. T12588/1947;
2. Erf 2695 Somerset-Wes, in die Stad Kaapstad, Afdeling Stellenbosch, Provinsie Wes-Kaap; Groot: 37, 1978 (Sewe en Dertig komma Een Nege Sewe Agt) Hektaar; Gehou kragtens Transportakte Nr. T12588/1947; en
3. Erf 5941 Somerset-Wes, in die Stad Kaapstad, Afdeling Stellenbosch, Provinsie Wes-Kaap; Groot: 4, 9336 (Vier komma Nege Drie Drie Ses) Hektaar; Gehou kragtens Transportakte Nr. T78947/2016.

Ek ken die naam "Helderberg Natuurreservaat" toe aan die reservaat, waarvan die grense weergegee word op die Landmeter-generaaldigramme met nommers 1634/2012, 687/1908 en 3598/1972 soos uiteengesit in die Bylae.

Geteken te Kaapstad op hede die 11de dag van Maart 2019.

MNR AW BREDELL
 PROVINSIALE MINISTER VAN PLAASLIKE REGERING, OMGEWINGSAKE EN ONTWIKKELINGSBEPLANNING

BYLAE

J.K. Muanda Pr Land Surveyor, Cape Town Diagram framed for proclamation purposes

SIDES Metres	ANGLES OF DIRECTION	CO-ORDINATES		SG No 1634/2012 Approved D.L.N.J. for Surveyor-General 2012-08-01 Sheet 1 of 2 sheets
		Y	System WG 19 0	
A B 1046.06	350 51 30	A	+ 0.00 + 370000.00	
B C 1071.18	350 24 00	B	+ 11633.81 + 68323.53	
C D 1007.28	349 56 30	C	+ 11467.63 + 69356.31	
D E 689.30	129 45 40	D	+ 11288.97 + 70412.49	
E F 549.47	6 25 40	E	+ 11113.05 + 71404.29	
F G 475.74	85 08 00	F	+ 11642.93 + 70963.43	
G H 2332.75	174 10 22	G	+ 11704.44 + 71509.45	
H A 1196.16	220 47 40	H	+ 12178.46 + 71549.81	
			+ 12415.30 + 69229.11	
			16888 ⊕ + 12269.44 + 70735.86	
			23888 ⊕ + 11153.19 + 71491.19	

Servitude Notes

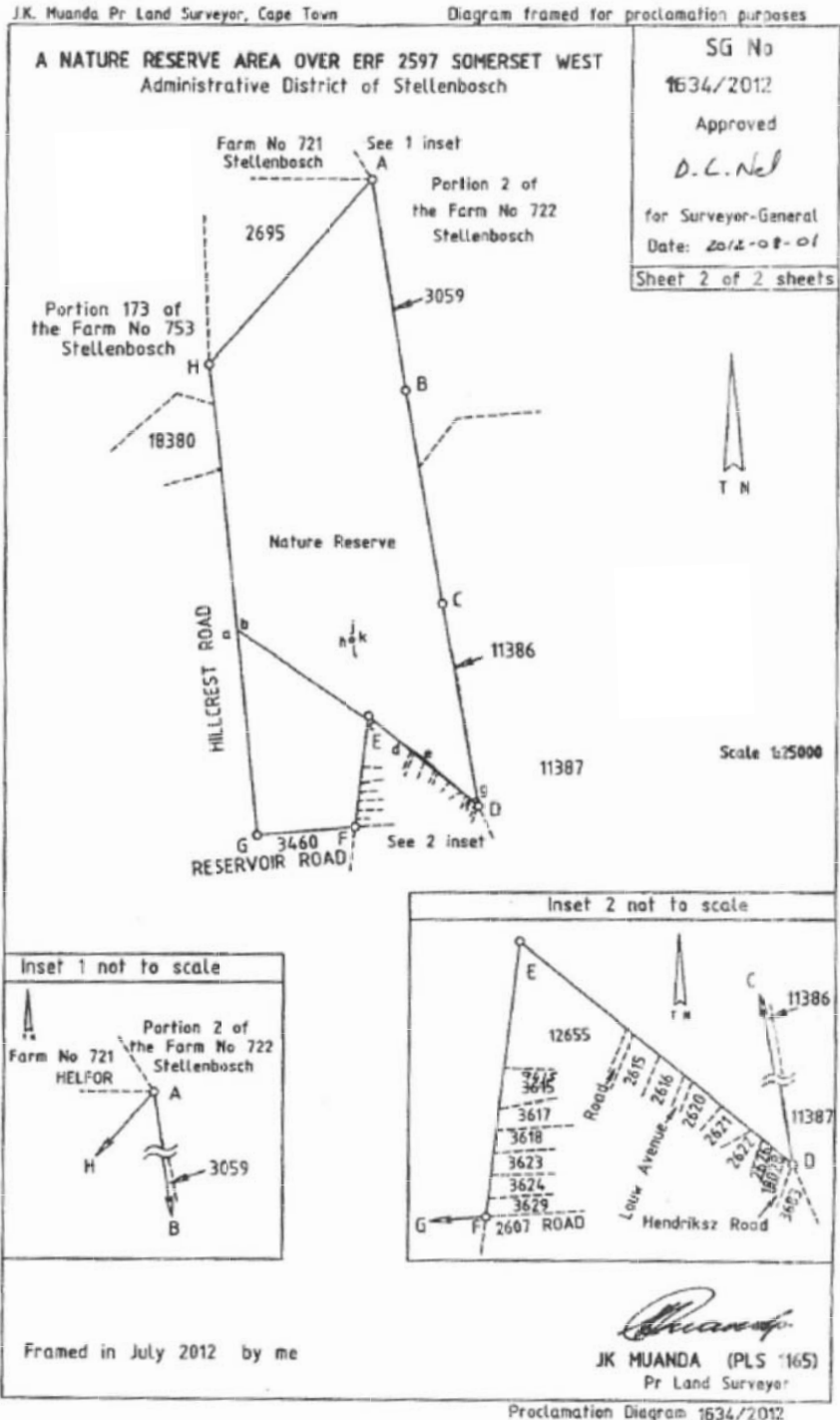
1. The lines abc and defj represent the middle of an Electric Power Line servitude vide diagram 883/1941 Annexed to D/S 1941-333
2. The figure hjkl represents a Leasehold Area vide diagram 5909/1994 Annexed to D/S

The figure A B C D E F G H represents approximately 253 Hectares of Land, being
A NATURE RESERVE AREA OVER ERF 2597 SOMERSET WEST
 Situate in the City of Cape Town Province of the Western Cape
 Administrative District of Stellenbosch
 Framed for the purposes of proclaiming a Nature Reserve in terms of Section 21(3) of the National Environmental Management Protected Area Act, 57 of 2003
 in July 2012 by me * 23 (1) JK MUANDA (PLS 1165) Pr Land Surveyor

This diagram is annexed to No dated i.f.o. Registrar of Deeds	The original diagram is No 383/1893 Annexed to: Stel. Q. 19-7 -AH28A-YS-(M267)	SG File No S/2398/54 S.R. No. Framed Comps: AHNE-3282 (M2253) AHNE-3281 (M2252) AHNE-3253 (M2254) AHNE-3251 (M3786) AHNE-32 (M2252)
---	--	---

Proclamation Diagram 1634/2012

CERTIFIED COPY FOR REGISTRATION
 FOR SURVEYOR-GENERAL
 DATE: 01 AUG 2012

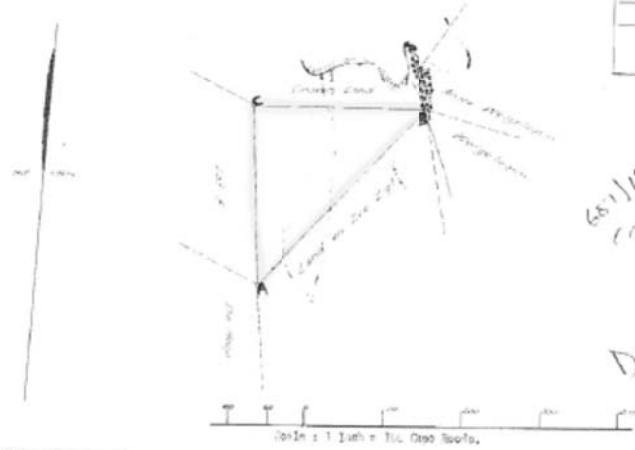


S.G. Job. No. 681/1908

The numerical data of this diagram are sufficiently accurate, (C-1.) P. C. No. 1908-100.

Sides.	Angles.
AB 316.76	A 14.35.36
BC 222.50	B 47.51.0
CA 234.23	C 77.44.36

Semi-circles.	
a	+ 52.50 = 45.02
b	+ 47.55 = 42.10
c	+ 62.63 = 22.13



1908 681/1908

The above diagram, A.C. represents 43 Hectare 257 Square Rods of Crown Land, situated near Geyser West in the Oudtshoorn Division, being "Aanker Land on the 21st".

- Boundry D. by Crown Land,
- E. by "Land on the 21st",
- W. by Lot F.

Diagram not bound to be accurate to variations.

(Sgt.) W. Verbeek,
Government Land Surveyor,
December 1907.

Date of Survey 21.4.1908
 Date of Settlement 21.4.1908
 Date of Issue 19.8.1909

D.M. 1908
 1908

C
 2695

ISAZISO SEPHONDO

I.S. 34/2019

22 kweyoKwindla 2019

ISEBE LEMICIMBI YOKUSINGQONGILEYO NOCWANGCISO LOPHUHLISO

UMTHETHO OYINATIONAL ENVIRONMENTAL MANAGEMENT: PROTECTED AREAS ACT, 2003 (UMTHETHO 57 KA-2003):

ISIBHENGEZO NGENDAWO YOLONDOLOZO LWENDALO YASEHELDERBERG

Mna, Anton Bredell, UMphathiswa wePhondo wooRhulumente beNdawo, iMicimbi yokuSingqongileyo noCwangciso loPhuhliso eNtshona Koloni, ngaphantsi kwecandelo 23(1)(a)(i) loMthetho woLawulo lokusiNgqongileyo kuZwelonke: Protected Areas Act, 2003 (uMthetho 57 ka-2003), ndibhengeza ulondolozo lwendalo kwi:—

1. Ntsalela yeSiza 2597 eSomerset West, kwiSixeko saseKapa, iCandelo leStellenbosch, kwiPhondo leNtshona Koloni; Ubungakanani: 269, 1007 (AmaKhulu amaBini anamaShumi amaThandathu aneThoba ikhoma isiNye iQanda iQanda iSixhenxe) seeHekthare; Ephantsi kweSiqinisekiso soNikezelo loMhlaba esinguNombolo-T12588/1947;
2. Siza esingunombolo-2695 eSomerset West, kwiSixeko saseKapa, iCandelo leStellenbosch, kwiPhondo leNtshona Koloni; Ubungakanani: 37, 1978 (AmaShumi amaThathu aneSixhenxe ikhoma isiNye iThoba iSixhenxe iSibhozo) seeHekthare; Ephantsi kweSiqinisekiso soNikezelo loMhlaba esinguNombolo-T12588/1947; kunye
3. Siza esingunombolo-5941 eSomerset West, kwiSixeko saseKapa, iCandelo leStellenbosch, kwiPhondo leNtshona Koloni; Ubungakanani: 4, 9336 (AmaWaka amaNe ikhoma iThoba isiThathu isiThathu) seeHekthare; Ephantsi kweSiqinisekiso soNikezelo loMhlaba esinguNombolo-T78947/2016.

Ndinikezela ngegama elithi “**Ulonolozo lweNdalo lwaseHelderberg**” kule ndawo yolondolozo, enemida eboniswe kwidayagram kaNocanda-Jikelele engunombolo 1634/2012, 687/1908 no 3598/1972 njengoko kubonisiwe kwiShedyuli.

Isayinwe eKapa ngalo mhla kwinyanga 11 kweyoKwindla 2019.

A BREDELL

UMPHATHISWA WEPHONDO WOORHULUMENTE BEDAWO, IMICIMBI YOKUSINGQONGILEYO NOPHUHLISO

KWISHEDYULI

J.K. Muanda Pr Land Surveyor, Cape Town Diagram framed for proclamation purposes

SIDES	Metres	ANGLES OF DIRECTION	CO-ORDINATES		SG No
			Y	System WG 19 0	
Constants			+ 0.00	+ 3700000.00	1634/2012
A B	1046.06	350 51 30	A + 11633.81	+ 68323.53	Approved
B C	1071.18	350 24 00	B + 11467.63	+ 69356.31	<i>D.L. Nd</i>
C D	1007.28	349 56 30	C + 11288.97	+ 70412.49	for Surveyor-General
D E	689.30	129 45 40	D + 11113.05	+ 71404.29	2012-08-01
E F	549.47	6 25 40	E + 11642.93	+ 70963.43	Sheet 1 of 2 sheets
F G	475.74	85 08 00	F + 11704.44	+ 71509.45	
G H	2332.75	174 10 22	G + 12178.46	+ 71549.81	
H A	1196.16	220 47 40	H + 12415.30	+ 69229.11	
16BB8			+ 12269.44	+ 70735.86	
23BB8			+ 11153.19	+ 71491.19	

Servitude Notes

1. The lines abc and defj represent the middle of an Electric Power Line servitude vide diagram 883/1941 Annexed to D/S 1941-333
2. The figure hjkl represents a Leasehold Area vide diagram 5909/1994 Annexed to D/S

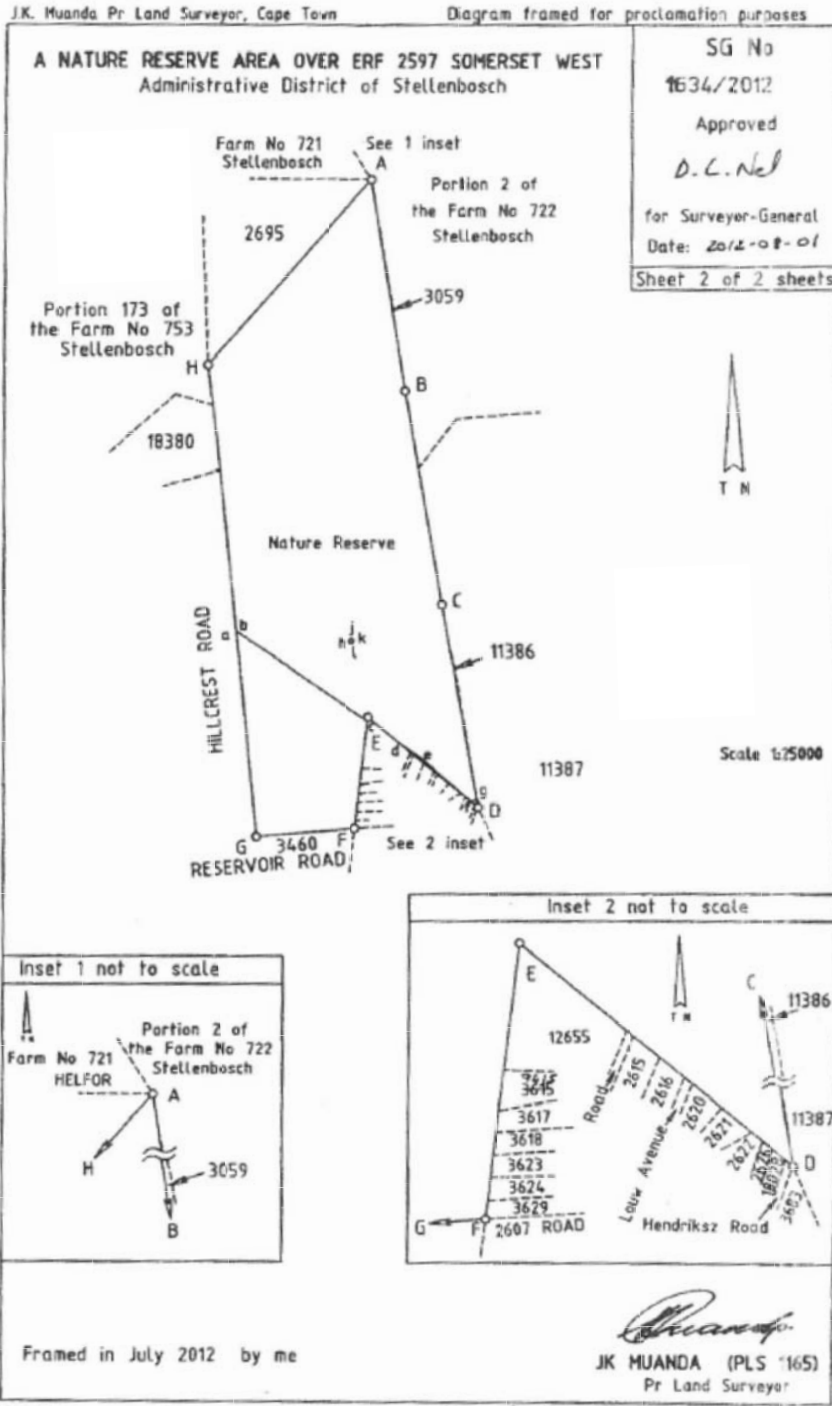
The figure A B C D E F G H represents approximately 253 Hectares of Land, being

A NATURE RESERVE AREA OVER ERF 2597 SOMERSET WEST

Situate in the City of Cape Town
 Administrative District of Stellenbosch Province of the Western Cape
 Framed for the purposes of proclaiming a Nature Reserve in terms of Section 21 (3) of the National Environmental Management Protected Area Act, 57 of 2003
 in July 2012 by me * 23 (1) *J.K. Muanda*
JK MUANDA (PLS 1165)
 Pr Land Surveyor

This diagram is annexed to No dated i.f.o. Registrar of Deeds	The original diagram is No 383/1893 Annexed to: Stel. Q. 19-7 -AH28A-Y5-(M267)	SG File No S/2398/54 S.R. No: Framed Comps: AHNE-3282 (M2253) AHNE-3281 (M2252) AHNE-3253 (M2251) AHNE-3251 (M2250) AHNE-32 (M2248)
---	--	---

Proclamation Diagram 1634/2012

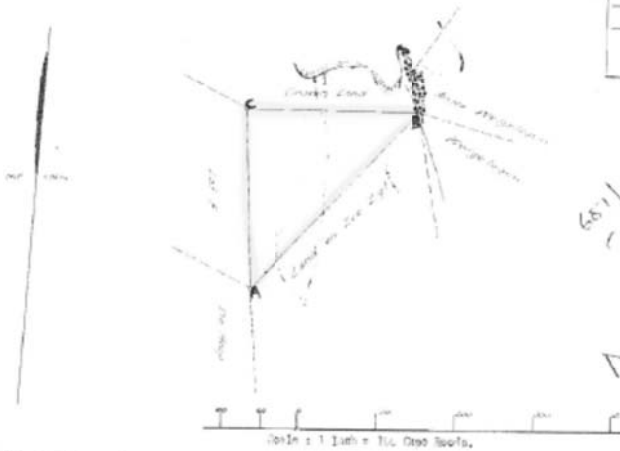


651/1908

The numerical data of this plan are sufficiently accurate.
G. L. F. C. Van
Draeken-

Sides.	Angles.
AB 316.70	A 143.35,36
BC 222.50	B 47.4, 0
CA 234.23	C 77.44,36

Coordinates.
x = 52,56 = 49,02
y = 407,35 = 412,10
z = 62,69 = 237,63



651/1908

The above diagram, A-C represents 43 Hectare 257 Square Rods of Crown Land, situate near General West in the Oudtshoorn District, being "Karoo Land on the East".

Bound S. by Crown Land,
E. by "Land on the West",
W. by Lot F.

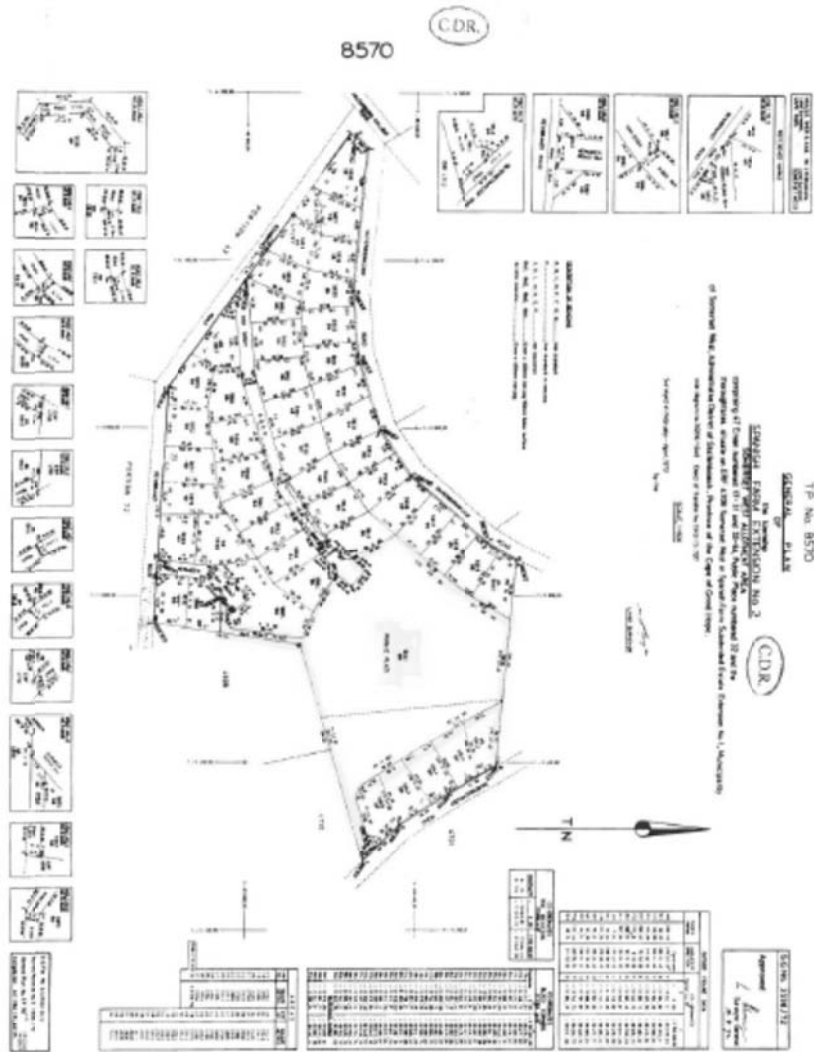
Diagram not bound to be according to regulations.

(Sgt.) W. Versfeld,
Surveyor General's Office,
Draakenburg, 1907.

Scale: 1 inch = 100 feet
 As Contained in Deed G. 23-12
 Date: 23.4.1908
 19.8.1999

651/1908

C
2695



U.S. SHEET NO. 11111

...

...

...

...

...

PROVINCIAL NOTICE

P.N. 35/2019

22 March 2019

DEPARTMENT OF ENVIRONMENTAL AFFAIRS AND DEVELOPMENT PLANNING**NATIONAL ENVIRONMENTAL MANAGEMENT: PROTECTED AREAS ACT, 2003
(ACT 57 OF 2003)****DECLARATION OF FALSE BAY NATURE RESERVE**

I, Anton Bredell, Provincial Minister of Local Government, Environmental Affairs and Development Planning in the Western Cape, under section 23(1)(a)(i) of the National Environmental Management: Protected Areas Act, 2003 (Act 57 of 2003), declare a nature reserve on:

1. Erf 115790 Cape Town, in the City of Cape Town, Cape Division, Western Cape Province;
In extent: 11,9914 (Eleven comma Nine Nine One Four) hectares;
Held by Deed of Grant (Cape Freeholds Volume 25 Folio 15 dated 27 November 1905);
2. The Farm Zeekoe Vlei West No. 846, in the City of Cape Town, Cape Division, Western Cape Province;
In extent: 26,3198 (Twenty Six comma Three One Nine Eight) hectares;
Held by Crown Grant No. G125/1953;
3. Remainder of Erf 93284 Cape Town, in the City of Cape Town, Cape Division, Western Cape Province;
In extent: 309,9528 (Three Hundred and Nine Comma Nine Five Two Eight) hectares;
Held by Deed of Grant No. G153/1954;
4. The Remainder of Erf 87374 Cape Town, in the City of Cape Town, Cape Division, Western Cape Province;
In extent: 195,5776 (One Hundred and Ninety Five comma Five Seven Seven Six) hectares;
Held by Deed of Grant No. G17/1964;
5. Remainder of Erf 87403 Cape Town, in the City of Cape Town, Cape Division, Western Cape Province;
In extent: 3942 (Three Thousand Nine Hundred and Forty Two) square metres;
Held by Crown Grant No. G5/1939;
6. The Farm Zeekoe Vlei West No. 847, in the City of Cape Town, Cape Division, Western Cape Province;
In extent: 59,4433 (Fifty Nine comma Four Four Three Three) hectares;
Held by Crown Grant No. G71/1941;
7. The Remainder of the Farm Zeekoe Vlei West No. 848, in the City of Cape Town, Cape Division, Western Cape Province;
In extent: 119,1294 (One Hundred and Nineteen comma One Two Nine Four) hectares;
Held by Crown Grant No. G71/1941;
8. Erf 62 Zeekoevlei, in the City of Cape Town, Cape Division, Western Cape Province;
In extent: 8208 (Eight Thousand Two Hundred and Eight) square metres;
Held by Deed of Transfer No. T10790/1968;

9. Erf 730 Zeekoevlei, in the City of Cape Town, Cape Division, Western Cape Province;
In extent: 3,0481 (Three comma Zero Four Eight One) hectares;
Held by Deed of Transfer No. T10790/1968;
10. Remainder of Erf 111018 Cape Town, in the City of Cape Town, Cape Division, Western Cape Province;
In extent: 9292 (Nine Thousand Two Hundred and Ninety Two) square metres;
Held by Certificate of Consolidated Title No. T11451/1985;
11. Remainder of Erf 70 Zeekoevlei, in the City of Cape Town, Cape Division, Western Cape Province;
In extent: 3003 (Three Thousand and Three) square metres;
Held by Deed of Transfer No. T11685/1976;
12. Erf 1076 Zeekoevlei (Public Place), in the City of Cape Town, Cape Division, Western Cape Province;
In extent: 4,5594 (Four comma Five Five Nine Four) hectares;
Held by Deed of Transfer No. T11685/1976;
13. Remainder of Erf 87407 Cape Town, in the City of Cape Town, Cape Division, Western Cape Province;
In extent: 2106 (Two Thousand One Hundred and Six) square metres;
Held by Deed of Transfer No. T12477/1964;
14. Erf 650 Zeekoevlei, in the City of Cape Town, Cape Division, Western Cape Province;
In extent: 9964 (Nine Thousand Nine Hundred and Sixty Four) square metres;
Held by Deed of Transfer No. T13637/1968;
15. Remainder of Erf 1834 Grassy Park, in the City of Cape Town, Cape Division, Western Cape Province;
In extent: 105,6386 (One Hundred and Five comma Six Three Eight Six) hectares;
Held by Certificate of Consolidated Title No. T1532/1966;
16. Erf 143 Zeekoevlei, in the City of Cape Town, Cape Division, Western Cape Province;
In extent: 809 (Eight Hundred and Nine) square metres;
Held by Deed of Transfer No. T1534/1966;
17. Erf 738 Zeekoevlei, in the City of Cape Town, Cape Division, Western Cape Province;
In extent: 7,1739 (Seven comma One Seven Three Nine) hectares;
Held by Deed of Transfer No. T16832/1968;
18. Erf 82287 Cape Town, in the City of Cape Town, Cape Division, Western Cape Province;
In extent: 4716 (Four Thousand Seven Hundred and Sixteen) square metres;
Held by Deed of Transfer No. T19380/1972;
19. Erf 82071 Cape Town, in the City of Cape Town, Cape Division, Western Cape Province;
In extent: 4239 (Four Thousand Two Hundred and Thirty Nine) square metres;
Held by Deed of Transfer No. T21739/1971;

20. Erf 241 Zeekoevlei, in the City of Cape Town, Cape Division, Western Cape Province;
In extent: 2827 (Two Thousand Eight Hundred and Twenty Seven) square metres;
Held by Deed of Transfer No. T22353/1965;
21. Erf 264 Zeekoevlei, in the City of Cape Town, Cape Division, Western Cape Province;
In extent: 20 (Twenty) square metres;
Held by Deed of Transfer No. T22355/1965;
22. Remainder of Erf 28079 Mitchells Plain, in the City of Cape Town, Cape Division, Western Cape Province;
In extent: 122,7367 (One Hundred and Twenty Two comma Seven Three Six Seven) hectares;
Held by Certificate of Registered Title No. T26069/1983;
23. Erf 263 Zeekoevlei, in the City of Cape Town, Cape Division, Western Cape Province;
In extent: 9,2667 (Nine comma Two Six Six Seven) hectares;
Held by Certificate of Registered Title No. T2806/1965;
24. Erf 138 Zeekoevlei (Public Place), in the City of Cape Town, Cape Division, Western Cape Province;
In extent: 1,8052 (One comma Eight Zero Five Two) hectares;
Held by Deed of Transfer No. T78879/2016;
25. Erf 262 Zeekoevlei, in the City of Cape Town, Cape Division, Western Cape Province;
In extent: 149 (One Hundred and Forty Nine) square metres;
Held by Certificate of Registered Title No. T2806/1965;
26. Remainder of Erf 7042 Grassy Park, in the City of Cape Town, Cape Division, Western Cape Province;
In extent: 1,0439 (One comma Zero Four Three Nine) hectares;
Held by Certificate of Consolidated Title No. T29272/1979;
27. Erf 82288 Cape Town, in the City of Cape Town, Cape Division, Western Cape Province;
In extent: 3969 (Three Thousand Nine Hundred and Sixty Nine) square metres;
Held by Deed of Transfer No. T29648/1970;
28. Erf 82289 Cape Town, in the City of Cape Town, Cape Division, Western Cape Province;
In extent: 3691 (Three Thousand Six Hundred and Ninety One) square metres;
Held by Deed of Transfer No. T29648/1970;
29. Remainder of Erf 82070 Cape Town, in the City of Cape Town, Cape Division, Western Cape Province;
In extent: 2061 (Two Thousand and Sixty One) square metres;
Held by Deed of Transfer No. T30142/1974;
30. Portion 37 (a Portion of Portion 2) of the Farm Grassy Park No. 844, in the City of Cape Town, Cape Division, Western Cape Province;
In extent: 90,4915 (Ninety comma Four Nine One Five) hectares;
Held by Deed of Transfer No. T37522/1990;

31. Remainder of Erf 829 Pelikan Park, in the City of Cape Town, Cape Division, Western Cape Province;
In extent: 381,1759 (Three Hundred and Eighty One comma One Seven Five Nine) hectares;
Held by Certificate of Consolidated Title No. T38419/1989;
32. Portion 31 (a Portion of Portion 2) of the Farm Grassy Park No. 844, in the City of Cape Town, Cape Division, Western Cape Province;
In extent: 27,2356 (Twenty Seven comma Two Three Five Six) hectares;
Held by Deed of Transfer No. T4739/1967;
33. Remainder Erf 1215 Mitchells Plain, in the City of Cape Town, Cape Division, Western Cape Province;
In extent: 221,8287 (Two Hundred and Twenty One comma Eight Two Eight Seven) hectares;
Held by Deed of Grant No. G260/1958;
34. Erf 212 Zeekoevlei, in the City of Cape Town, Cape Division, Western Cape Province;
In extent: 614 (Six Hundred and Fourteen) square metres;
Held by Deed of Transfer No. T50652/2002;
35. Erf 213 Zeekoevlei, in the City of Cape Town, Cape Division, Western Cape Province;
In extent: 750 (Seven Hundred and Fifty) square metres;
Held by Deed of Transfer No. T50652/2002;
36. Erf 214 Zeekoevlei, in the City of Cape Town, Cape Division, Western Cape Province;
In extent: 895 (Eight Hundred and Ninety Five) square metres;
Held by Deed of Transfer No. T50652/2002;
37. Erf 215 Zeekoevlei, in the City of Cape Town, Cape Division, Western Cape Province;
In extent: 1147 (One Thousand One Hundred and Forty Seven) square metres;
Held by Deed of Transfer No. T50652/2002;
38. Erf 216 Zeekoevlei, in the City of Cape Town, Cape Division, Western Cape Province;
In extent: 1449 (One Thousand Four Hundred and Forty Nine) square metres;
Held by Deed of Transfer No. T50652/2002;
39. Erf 217 Zeekoevlei, in the City of Cape Town, Cape Division, Western Cape Province;
In extent: 1461 (One Thousand Four Hundred and Sixty One) square metres;
Held by Deed of Transfer No. T50652/2002;
40. Erf 218 Zeekoevlei, in the City of Cape Town, Cape Division, Western Cape Province;
In extent: 1389 (One Thousand Three Hundred and Eighty Nine) square metres;
Held by Deed of Transfer No. T50652/2002;
41. Erf 219 Zeekoevlei, in the City of Cape Town, Cape Division, Western Cape Province;
In extent: 1280 (One Thousand Two Hundred and Eighty) square metres;
Held by Deed of Transfer No. T50652/2002;

42. Erf 220 Zeekoevlei, in the City of Cape Town, Cape Division, Western Cape Province;
In extent: 1461 (One Thousand Four Hundred and Sixty One) square metres;
Held by Deed of Transfer No. T50652/2002;
43. Erf 221 Zeekoevlei, in the City of Cape Town, Cape Division, Western Cape Province;
In extent: 1216 (One Thousand Two Hundred and Sixteen) square metres;
Held by Deed of Transfer No. T50652/2002;
44. Erf 223 Zeekoevlei, in the City of Cape Town, Cape Division, Western Cape Province;
In extent: 769 (Seven Hundred and Sixty Nine) square metres;
Held by Deed of Transfer No. T50652/2002;
45. Erf 224 Zeekoevlei, in the City of Cape Town, Cape Division, Western Cape Province;
In extent: 703 (Seven Hundred and Three) square metres;
Held by Deed of Transfer No. T50652/2002;
46. Erf 225 Zeekoevlei, in the City of Cape Town, Cape Division, Western Cape Province;
In extent: 655 (Six Hundred and Fifty Five) square metres;
Held by Deed of Transfer No. T50652/2002;
47. Erf 226 Zeekoevlei, in the City of Cape Town, Cape Division, Western Cape Province;
In extent: 718 (Seven Hundred and Eighteen) square metres;
Held by Deed of Transfer No. T50652/2002;
48. Erf 227 Zeekoevlei, in the City of Cape Town, Cape Division, Western Cape Province;
In extent: 598 (Five Hundred and Ninety Eight) square metres;
Held by Deed of Transfer No. T50652/2002;
49. Erf 228 Zeekoevlei, in the City of Cape Town, Cape Division, Western Cape Province;
In extent: 608 (Six Hundred and Eight) square metres;
Held by Deed of Transfer No. T50652/2002;
50. Erf 229 Zeekoevlei, in the City of Cape Town, Cape Division, Western Cape Province;
In extent: 598 (Five Hundred and Ninety Eight) square metres;
Held by Deed of Transfer No. T50652/2002;
51. Erf 230 Zeekoevlei, in the City of Cape Town, Cape Division, Western Cape Province;
In extent: 683 (Six Hundred and Eighty Three) square metres;
Held by Deed of Transfer No. T50652/2002;
52. Erf 231 Zeekoevlei, in the City of Cape Town, Cape Division, Western Cape Province;
In extent: 952 (Nine Hundred and Fifty Two) square metres;
Held by Deed of Transfer No. T50652/2002;
53. Erf 232 Zeekoevlei, in the City of Cape Town, Cape Division, Western Cape Province;
In extent: 1306 (One Thousand Three Hundred and Six) square metres;
Held by Deed of Transfer No. T50652/2002;

54. Erf 233 Zeekoevlei, in the City of Cape Town, Cape Division, Western Cape Province;
In extent: 816 (Eight Hundred and Sixteen) square metres;
Held by Deed of Transfer No. T50652/2002;
55. Erf 234 Zeekoevlei, in the City of Cape Town, Cape Division, Western Cape Province;
In extent: 1226 (One Thousand Two Hundred and Twenty Six) square metres;
Held by Deed of Transfer No. T50652/2002;
56. Erf 235 Zeekoevlei, in the City of Cape Town, Cape Division, Western Cape Province;
In extent: 938 (Nine Hundred and Thirty Eight) square metres;
Held by Deed of Transfer No. T50652/2002;
57. Erf 236 Zeekoevlei, in the City of Cape Town, Cape Division, Western Cape Province;
In extent: 892 (Eight Hundred and Ninety Two) square metres;
Held by Deed of Transfer No. T50652/2002;
58. Erf 237 Zeekoevlei, in the City of Cape Town, Cape Division, Western Cape Province;
In extent: 847 (Eight Hundred and Forty Seven) square metres;
Held by Deed of Transfer No. T50652/2002;
59. Erf 238 Zeekoevlei, in the City of Cape Town, Cape Division, Western Cape Province;
In extent: 802 (Eight Hundred and Two) square metres;
Held by Deed of Transfer No. T50652/2002;
60. Erf 239 Zeekoevlei, in the City of Cape Town, Cape Division, Western Cape Province;
In extent: 727 (Seven Hundred and Twenty Seven) square metres;
Held by Deed of Transfer No. T50652/2002;
61. Erf 240 Zeekoevlei, in the City of Cape Town, Cape Division, Western Cape Province;
In extent: 633 (Six Hundred and Thirty Three) square metres;
Held by Deed of Transfer No. T50652/2002;
62. Erf 243 Zeekoevlei, in the City of Cape Town, Cape Division, Western Cape Province;
In extent: 707 (Seven Hundred and Seven) square metres;
Held by Deed of Transfer No. T50652/2002;
63. Erf 244 Zeekoevlei, in the City of Cape Town, Cape Division, Western Cape Province;
In extent: 825 (Eight Hundred and Twenty Five) square metres;
Held by Deed of Transfer No. T50652/2002;
64. Erf 245 Zeekoevlei, in the City of Cape Town, Cape Division, Western Cape Province;
In extent: 733 (Seven Hundred and Thirty Three) square metres;
Held by Deed of Transfer No. T50652/2002;
65. Erf 246 Zeekoevlei, in the City of Cape Town, Cape Division, Western Cape Province;
In extent: 767 (Seven Hundred and Sixty Seven) square metres;
Held by Deed of Transfer No. T50652/2002;

66. Erf 247 Zeekoevlei, in the City of Cape Town, Cape Division, Western Cape Province;
In extent: 754 (Seven Hundred and Fifty Four) square metres;
Held by Deed of Transfer No. T50652/2002;
67. Erf 248 Zeekoevlei, in the City of Cape Town, Cape Division, Western Cape Province;
In extent: 697 (Six Hundred and Ninety Seven) square metres;
Held by Deed of Transfer No. T50652/2002;
68. Erf 249 Zeekoevlei, in the City of Cape Town, Cape Division, Western Cape Province;
In extent: 785 (Seven Hundred and Eighty Five) square metres;
Held by Deed of Transfer No. T50652/2002;
69. Erf 250 Zeekoevlei, in the City of Cape Town, Cape Division, Western Cape Province;
In extent: 785 (Seven Hundred and Eighty Five) square metres;
Held by Deed of Transfer No. T50652/2002;
70. Erf 251 Zeekoevlei, in the City of Cape Town, Cape Division, Western Cape Province;
In extent: 785 (Seven Hundred and Eighty Five) square metres;
Held by Deed of Transfer No. T50652/2002;
71. Erf 252 Zeekoevlei, in the City of Cape Town, Cape Division, Western Cape Province;
In extent: 785 (Seven Hundred and Eighty Five) square metres;
Held by Deed of Transfer No. T50652/2002;
72. Erf 253 Zeekoevlei, in the City of Cape Town, Cape Division, Western Cape Province;
In extent: 739 (Seven Hundred and Thirty Nine) square metres;
Held by Deed of Transfer No. T50652/2002;
73. Erf 254 Zeekoevlei, in the City of Cape Town, Cape Division, Western Cape Province;
In extent: 909 (Nine Hundred and Nine) square metres;
Held by Deed of Transfer No. T50652/2002;
74. Erf 255 Zeekoevlei, in the City of Cape Town, Cape Division, Western Cape Province;
In extent: 259 (Two Hundred and Fifty Nine) square metres;
Held by Deed of Transfer No. T50652/2002;
75. Erf 256 Zeekoevlei, in the City of Cape Town, Cape Division, Western Cape Province;
In extent: 259 (Two Hundred and Fifty Nine) square metres;
Held by Deed of Transfer No. T50652/2002;
76. Erf 257 Zeekoevlei, in the City of Cape Town, Cape Division, Western Cape Province;
In extent: 259 (Two Hundred and Fifty Nine) square metres;
Held by Deed of Transfer No. T50652/2002;
77. Erf 93374 Cape Town, in the City of Cape Town, Cape Division, Western Cape Province;
In extent: 169,0306 (One Hundred and Sixty Nine comma Zero Three Zero Six) hectares;
Held by Deed of Grant No. T5174/1975;

78. Erf 974 Schaapkraal, in the City of Cape Town, Cape Division, Western Cape Province;
In extent: 11,9567 (Eleven comma Nine Five Six Seven) hectares;
Held by Deed of Transfer No. T51679/1988;
79. Farm No. 837, in the City of Cape Town, Cape Division, Western Cape Province;
In extent: 3,4261 (Three comma Four Two Six One) hectares;
Held by Deed of Transfer No. T7147/1920;
80. Farm No. 838, in the City of Cape Town, Cape Division, Western Cape Province;
In extent: 10,7438 (Ten comma Seven Four Three Eight) hectares;
Held by Deed of Transfer No. T7147/1920;
81. The Remainder of Portion 1 of Farm No. 840, in the City of Cape Town, Cape Division,
Western Cape Province;
In extent: 198,6578 (One Hundred and Ninety Eight comma Six Five Seven Eight) hectares;
Held by Deed of Transfer No. T7147/1920;
82. Remainder of Erf 87375 Cape Town, in the City of Cape Town, Cape Division, Western
Cape Province;
In extent: 38,1817 (Thirty Eight comma One Eight One Seven) hectares;
Held by Certificate of Consolidated Title No. T7449/1998;
83. Erf 1 Capricorn, in the City of Cape Town, Cape Division, Western Cape Province;
In extent: 127,6840 (One Hundred and Twenty Seven comma Six Eight Four Zero) hectares;
Held by Certificate of Consolidated Title No. T7455/1998;
84. Remainder of Erf 82047 Cape Town, in the City of Cape Town, Cape Division, Western
Cape Province;
In extent: 4164 (Four Thousand One Hundred and Sixty Four) square metres;
Held by Deed of Transfer No. T8467/1978;
85. Erf 837 Zeekoevlei, in the City of Cape Town, Cape Division, Western Cape Province;
In extent: 1101 (One Thousand One Hundred and One) square metres;
Held by Deed of Transfer No. T9142/1971;
86. Erf 1775 Grassy Park, in the City of Cape Town, Cape Division, Western Cape Province;
In extent: 7232 (Seven Thousand Two Hundred and Thirty Two) square metres;
Held by Deed of Transfer No. T9302/1967;
87. Remainder of Erf 1212 Mitchells Plain, in the City of Cape Town, Cape Division, Western
Cape Province;
In extent: 369,1392 (Three Hundred and Sixty Nine comma One Three Nine Two) hectares;
Held by Deed of Grant No. G74/1970; and

88. Erf 174577 Cape Town, in the City of Cape Town, Cape Division, Western Cape Province;
 In extent: 2,2959 (Two comma Two Nine Five Nine) hectares;
 Held by Certificate of Registered Title No. T15982/2013.

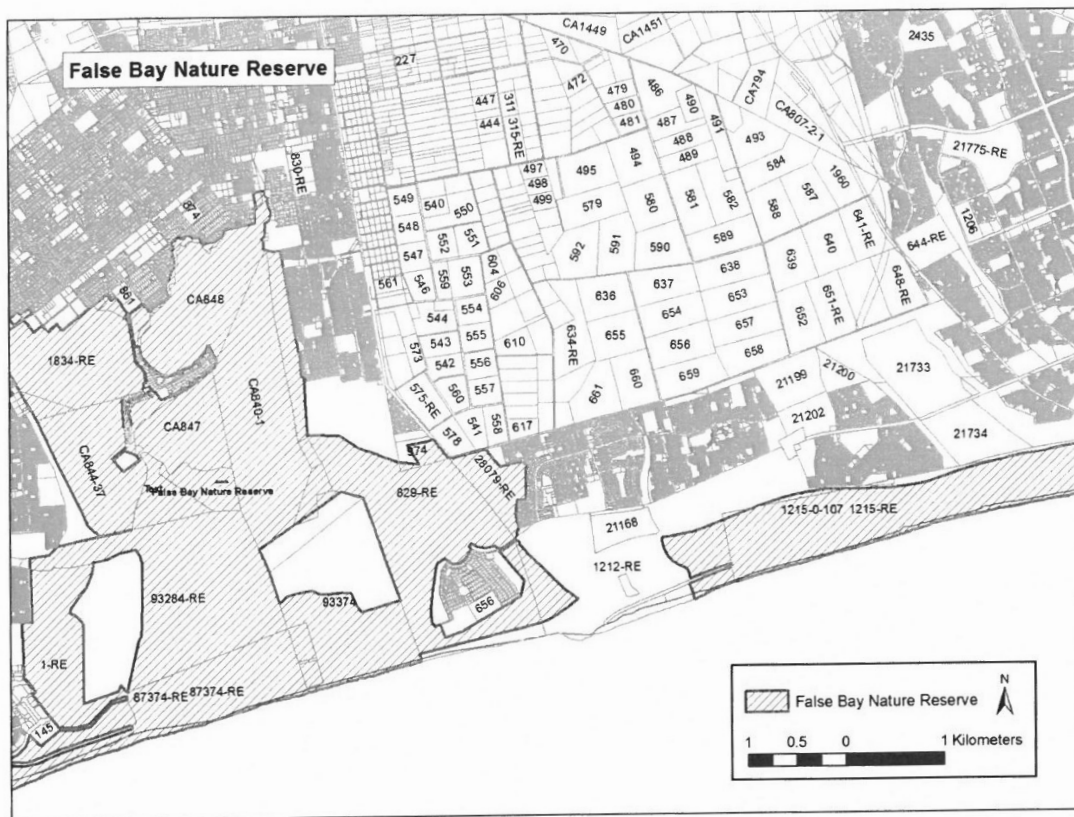
I assign the name “False Bay Nature Reserve” to the reserve, of which the boundaries are reflected on the map as set out in the Schedule.

The approved Surveyor-General diagrams in respect of the properties that comprise the False Bay Nature Reserve, with numbers 3574/1905, 6958/1952, 3603/2011, 2954/2011, 967/2012, 2720/2012, 6028/1978, 4786/1937, 957/2012, 1246/1949, 9123/1967, 3146/1981, 9688/1970, 6653/1974, 7517/1960, 5149/1943, 6507/1950, 2131/1963, 357/1968, 3465/1939, 2972/1944, 2791/1943, 2131/1963, 1629/2012, 2131/1963, 6098/1949, 2131/1963, 6271/1973, 3465/1939, 1170/1922, 3627/1942, 1437/1990, 966/2012, 7716/1965, 3915/2011, 2131/1963, 2964/2011, 4378/2011, 31/1790, 955/2012, 956/2012, 4369/2011, 4368/2011, 4766/1944, 7127/1970, 8876/1918, 5439/1961, 3911/2011, 3912/2011, 3913/2011, 3914/2011 and 1454/2012, are available for inspection at CapeNature’s head office, cnr. Bosduif and Volstruis Streets, Bridgetown, Athlone.

Signed at Cape Town this 11th day of March 2019.

A BREDELL
PROVINCIAL MINISTER OF LOCAL GOVERNMENT, ENVIRONMENTAL AFFAIRS
AND DEVELOPMENT PLANNING

SCHEDULE



PROVINSIALE KENNISGEWING

P.K. 35/2019

22 Maart 2019

DEPARTEMENT VAN OMGEWINGSAKE EN ONTWIKKELINGSBEPLANNING

**“NATIONAL ENVIRONMENTAL MANAGEMENT: PROTECTED AREAS ACT, 2003”
(WET 57 VAN 2003)**

VERKLARING VAN VALSBAAI NATUURRESERVAAT

Ek, Anton Bredell, Provinsiale Minister van Plaaslike Regering, Omgewingsake en Ontwikkelingsbeplanning in die Wes-Kaap, kragtens artikel 23(1)(a)(i) van die “National Environmental Management: Protected Areas Act, 2003” (Wet 57 van 2003), verklaar ’n natuureservaat op:

1. Erf 115790 Kaapstad, in die Stad Kaapstad, Afdeling Kaap, Provinsie Wes-Kaap;
Groot: 11,9914 (Elf komma Nege Nege Een Vier) hektaar;
Gehou kragtens Grondbrief (Kaapse Eiendomsbriewe Band 25 Folio 15 gedateer 27 November 1905);
2. Die Plaas Zeekoe Vlei West Nr. 846, in die Stad Kaapstad, Afdeling Kaap, Provinsie Wes-Kaap;
Groot: 26,3198 (Ses en Twintig komma Drie Een Nege Ag) hektaar;
Gehou kragtens Kroongrondbrief Nr. G125/1953;
3. Restant van Erf 93284 Kaapstad, in die Stad Kaapstad, Afdeling Kaap, Provinsie Wes-Kaap;
Groot: 309,9528 (Drie Honderd en Nege komma Nege Vyf Twee Ag) hektaar;
Gehou kragtens Grondbrief Nr. G153/1954;
4. Restant van Erf 87374 Kaapstad, in die Stad Kaapstad, Afdeling Kaap, Provinsie Wes-Kaap;
Groot: 195,5776 (Een Honderd Vyf en Neëntig komma Vyf Sewe Sewe Ses) hektaar
Gehou kragtens Grondbrief Nr. G17/1964;
5. Restant van Erf 87403 Kaapstad, in die Stad Kaapstad, Afdeling Kaap, Provinsie Wes-Kaap;
Groot: 3942 (Drie Duisend Nege Honderd Twee en Veertig) vierkantemeter;
Gehou kragtens Kroongrondbrief Nr. G5/1939;
6. Die Plaas Zeekoe Vlei West No. 847, in die Stad Kaapstad, Afdeling Kaap, Provinsie Wes-Kaap;
Groot: 59,4433 (Nege en Vyftig komma Vier Vier Drie Drie) hektaar;
Gehou kragtens Kroongrondbrief Nr. G71/1941;
7. Restant van die Plaas Zeekoe Vlei West No. 848, in die Stad Kaapstad, Afdeling Kaap, Provinsie Wes-Kaap;
Groot: 119,1294 (Een Honderd en Negentien komma Een Twee Nege Vier) hektaar;
Gehou kragtens Kroongrondbrief Nr. G71/1941;
8. Erf 62 Zeekoevlei, in die Stad Kaapstad, Afdeling Kaap, Provinsie Wes-Kaap;
Groot: 8208 (Agt Duisend Twee Honderd en Agt) vierkantemeter;
Gehou kragtens Transportakte Nr. T10790/1968;

9. Erf 730 Zeekoevlei, in die Stad Kaapstad, Afdeling Kaap, Provinsie Wes-Kaap;
Groot: 3,0481 (Drie komma Nul Vier Agt Een) hektaar;
Gehou kragtens Transportakte Nr. T10790/1968;
10. Restant van Erf 111018 Kaapstad, in die Stad Kaapstad, Afdeling Kaap, Provinsie Wes-Kaap;
Groot: 9292 (Nege Duisend Twee Honderd Twee en Neëntig) vierkantemeter;
Gehou kragtens Sertifikaat van Verenigde Titel Nr. T11451/1985;
11. Restant van Erf 70 Zeekoevlei, in die Stad Kaapstad, Afdeling Kaap, Provinsie Wes-Kaap;
Groot: 3003 (Drie Duisend en Drie) vierkantemeter;
Gehou kragtens Transportakte Nr. T11685/1976;
12. Erf 1076 Zeekoevlei (Openbare Plek), in die Stad Kaapstad, Afdeling Kaap, Provinsie Wes-Kaap;
Groot: 4,5594 (Vier komma Vyf Vyf Nege Vier) hektaar;
Gehou kragtens Transportakte Nr. T11685/1976;
13. Restant van Erf 87407 Kaapstad, in die Stad Kaapstad, Afdeling Kaap, Provinsie Wes-Kaap;
Groot: 2106 (Twee Duisend Een Honderd en Ses) vierkantemeter;
Gehou kragtens Transportakte Nr. T12477/1964;
14. Erf 650 Zeekoevlei, in die Stad Kaapstad, Afdeling Kaap, Provinsie Wes-Kaap;
Groot: 9964 (Nege Duisend Nege Honderd Vier en Sestig) vierkantemeter;
Gehou kragtens Transportakte Nr. T13637/1968;
15. Restant van Erf 1834 Grassy Park, in die Stad Kaapstad, Afdeling Kaap, Provinsie Wes-Kaap;
Groot: 105,6386 (Een Honderd en Vyf komma Ses Drie Agt Ses) hektaar;
Gehou kragtens Sertifikaat van Verenigde Titel Nr. T1532/1966;
16. Erf 143 Zeekoevlei, in die Stad Kaapstad, Afdeling Kaap, Provinsie Wes-Kaap;
Groot: 809 (Agt Honderd en Nege) vierkantemeter;
Gehou kragtens Transportakte Nr. T1534/1966;
17. Erf 738 Zeekoevlei, in die Stad Kaapstad, Afdeling Kaap, Provinsie Wes-Kaap;
Groot: 7,1739 (Sewe komma Een Sewe Drie Nege) hektaar;
Gehou kragtens Transportakte Nr. T16832/1968;
18. Erf 82287 Kaapstad, in die Stad Kaapstad, Afdeling Kaap, Provinsie Wes-Kaap;
Groot: 4716 (Vier Duisend Sewe Honderd en Sestien) vierkantemeter;
Gehou kragtens Transportakte Nr. T19380/1972;
19. Erf 82071 Kaapstad, in die Stad Kaapstad, Afdeling Kaap, Provinsie Wes-Kaap;
Groot: 4239 (Vier Duisend Twee Honderd Nege en Dertig) vierkantemeter;
Gehou kragtens Transportakte Nr. T21739/1971;

20. Erf 241 Zeekoevlei, in die Stad Kaapstad, Afdeling Kaap, Provinsie Wes-Kaap;
Groot: 2827 (Twee Duisend Agt Honderd Sewe en Twintig) vierkantemeter;
Gehou kragtens Transportakte Nr. T22353/1965;
21. Erf 264 Zeekoevlei, in die Stad Kaapstad, Afdeling Kaap, Provinsie Wes-Kaap;
Groot: 20 (Twintig) vierkantemeter;
Gehou kragtens Transportakte Nr. T22355/1965;
22. Restant van Erf 28079 Mitchells Plain, in die Stad Kaapstad, Afdeling Kaap, Provinsie Wes-Kaap;
Groot: 122,7367 (Een Honderd Twee en Twintig komma Sewe Drie Ses Sewe) hektaar;
Gehou kragtens Sertifikaat van Geregistreerde Titel Nr. T26069/1983;
23. Erf 263 Zeekoevlei, in die Stad Kaapstad, Afdeling Kaap, Provinsie Wes-Kaap;
Groot: 9,2667 (Nege komma Twee Ses Ses Sewe) hektaar;
Gehou kragtens Sertifikaat van Geregistreerde Titel Nr. T2806/1965;
24. Erf 138 Zeekoevlei (Openbare Plek), in die Stad Kaapstad, Afdeling Kaap, Provinsie Wes-Kaap;
Groot: 1,8052 (Een komma Agt Nul Vyf Twee) hektaar;
Gehou kragtens Transportakte Nr. T78879/2016;
25. Erf 262 Zeekoevlei, in die Stad Kaapstad, Afdeling Kaap, Provinsie Wes-Kaap;
Groot: 149 (Een Honderd Nege en Veertig) vierkantemeter;
Gehou kragtens Sertifikaat van Geregistreerde Titel Nr. T2806/1965;
26. Restant van Erf 7042 Grassy Park, in die Stad Kaapstad, Afdeling Kaap, Provinsie Wes-Kaap;
Groot: 1,0439 (Een komma Nul Vier Drie Nege) hektaar;
Gehou kragtens Sertifikaat van Verenigde Titel Nr. T29272/1979;
27. Erf 82288 Kaapstad, in die Stad Kaapstad, Afdeling Kaap, Provinsie Wes-Kaap;
Groot: 3969 (Drie Duisend Nege Honderd Nege en Sestig) vierkantemeter;
Gehou kragtens Transportakte Nr. T29648/1970;
28. Erf 82289 Kaapstad, in die Stad Kaapstad, Afdeling Kaap, Provinsie Wes-Kaap;
Groot: 3691 (Drie Duisend Ses Honderd Een en Neëntig) vierkantemeter;
Gehou kragtens Transportakte. T29648/1970;
29. Restant van Erf 82070 Kaapstad, in die Stad Kaapstad, Afdeling Kaap, Provinsie Wes-Kaap;
Groot: 2061 (Twee Duisend Een en Sestig) vierkantemeter;
Gehou kragtens Transportakte Nr. T30142/1974;
30. Gedeelte 37 ('n Gedeelte van Gedeelte 2) van die Plaas Grassy Park Nr. 844, in die Stad Kaapstad, Afdeling Kaap, Provinsie Wes-Kaap;
Groot: 90,4915 (Neëntig komma Vier Nege Een Vyf) hektaar;
Gehou kragtens Transportakte Nr. T37522/1990;

31. Restant van Erf 829 Pelikan Park, in die Stad Kaapstad, Afdeling Kaap, Provinsie Wes-Kaap;
Groot: 381,1759 (Drie Honderd Een en Tagtig komma Een Sewe Vyf Nege) hektaar;
Gehou kragtens Sertifikaat van Verenigde Titel Nr. T38419/1989;
32. Gedeelte 31 ('n Gedeelte van Gedeelte 2) van die Plaas Grassy Park Nr. 844, in die Stad Kaapstad, Afdeling Kaap, Provinsie Wes-Kaap;
Groot: 27,2356 (Sewe en Twintig komma Twee Drie Vyf Ses) hektaar;
Gehou kragtens Transportakte Nr. T4739/1967;
33. Restant van Erf 1215 Mitchells Plain, in die Stad Kaapstad, Afdeling Kaap, Provinsie Wes-Kaap;
Groot: 221,8287 (Twee Honderd Een en Twintig komma Agt Twee Agt Sewe) hektaar;
Gehou kragtens Grondbrief Nr. G260/1958;
34. Erf 212 Zeekoevlei, in die Stad Kaapstad, Afdeling Kaap, Provinsie Wes-Kaap;
Groot: 614 (Ses Honderd en Veertien) vierkantemeter;
Gehou kragtens Transportakte Nr. T50652/2002;
35. Erf 213 Zeekoevlei, in die Stad Kaapstad, Afdeling Kaap, Provinsie Wes-Kaap;
Groot: 750 (Sewe Honderd en Vyftig) vierkantemeter;
Gehou kragtens Transportakte Nr. T50652/2002;
36. Erf 214 Zeekoevlei, in die Stad Kaapstad, Afdeling Kaap, Provinsie Wes-Kaap;
Groot: 895 (Agt Honderd Vyf en Neëntig) vierkantemeter;
Gehou kragtens Transportakte Nr. T50652/2002;
37. Erf 215 Zeekoevlei, in die Stad Kaapstad, Afdeling Kaap, Provinsie Wes-Kaap;
Groot: 1147 (Een Duisend Een Honderd Sewe en Veertig) vierkantemeter;
Gehou kragtens Transportakte Nr. T50652/2002;
38. Erf 216 Zeekoevlei, in die Stad Kaapstad, Afdeling Kaap, Provinsie Wes-Kaap;
Groot: 1449 (Een Duisend Vier Honderd Nege en Veertig) vierkantemeter;
Gehou kragtens Transportakte Nr. T50652/2002;
39. Erf 217 Zeekoevlei, in die Stad Kaapstad, Afdeling Kaap, Provinsie Wes-Kaap;
Groot: 1461 (Een Duisend Vier Honderd Een en Sestig) vierkantemeter;
Gehou kragtens Transportakte Nr. T50652/2002;
40. Erf 218 Zeekoevlei, in die Stad Kaapstad, Afdeling Kaap, Provinsie Wes-Kaap;
Groot: 1389 (Een Duisend Drie Honderd Nege en Tagtig) vierkantemeter;
Gehou kragtens Transportakte Nr. T50652/2002;
41. Erf 219 Zeekoevlei, in die Stad Kaapstad, Afdeling Kaap, Provinsie Wes-Kaap;
Groot: 1280 (Een Duisend Twee Honderd en Tagtig) vierkantemeter;
Gehou kragtens Transportakte Nr. T50652/2002;

42. Erf 220 Zeekoevlei, in die Stad Kaapstad, Afdeling Kaap, Provinsie Wes-Kaap;
Groot: 1461 (Een Duisend Vier Honderd Een en Sestig) vierkantemeter;
Gehou kragtens Transportakte Nr. T50652/2002;
43. Erf 221 Zeekoevlei, in die Stad Kaapstad, Afdeling Kaap, Provinsie Wes-Kaap;
Groot: 1216 (Een Duisend Twee Honderd en Sestien) vierkantemeter;
Gehou kragtens Transportakte Nr. T50652/2002;
44. Erf 223 Zeekoevlei, in the Stad Kaapstad, Afdeling Kaap, Provinsie Wes-Kaap;
Groot: 769 (Sewe Honderd Nege en Sestig) vierkantemeter;
Gehou kragtens Transportakte No. T50652/2002;
45. Erf 224 Zeekoevlei, in die Stad Kaapstad, Afdeling Kaap, Provinsie Wes-Kaap;
Groot: 703 (Sewe Honderd en Drie) vierkantemeter;
Gehou kragtens Transportakte Nr. T50652/2002;
46. Erf 225 Zeekoevlei, in die Stad Kaapstad, Afdeling Kaap, Provinsie Wes-Kaap;
Groot: 655 (Ses Honderd Vyf en Vyftig) vierkantemeter;
Gehou kragtens Transportakte Nr. T50652/2002;
47. Erf 226 Zeekoevlei, in die Stad Kaapstad, Afdeling Kaap, Provinsie Wes-Kaap;
Groot: 718 (Sewe Honderd en Agtien) vierkantemeter;
Gehou kragtens Transportakte Nr. T50652/2002;
48. Erf 227 Zeekoevlei, in die Stad Kaapstad, Afdeling Kaap, Provinsie Wes-Kaap;
Groot: 598 (Vyf Honderd Agt en Neëntig) vierkantemeter;
Gehou kragtens Transportakte Nr. T50652/2002;
49. Erf 228 Zeekoevlei, in die Stad Kaapstad, Afdeling Kaap, Provinsie Wes-Kaap;
Groot: 608 (Ses Honderd en Agt) vierkantemeter;
Gehou kragtens Transportakte Nr. T50652/2002;
50. Erf 229 Zeekoevlei, in die Stad Kaapstad, Afdeling Kaap, Provinsie Wes-Kaap;
Groot: 598 (Vyf Honderd Agt en Neëntig) vierkantemeter;
Gehou kragtens Transportakte Nr. T50652/2002;
51. Erf 230 Zeekoevlei, in die Stad Kaapstad, Afdeling Kaap, Provinsie Wes-Kaap;
In extent: 683 (Ses Honderd Drie en Tagtig) vierkantemeter;
Gehou kragtens Transportakte Nr. T50652/2002;
52. Erf 231 Zeekoevlei, in die Stad Kaapstad, Afdeling Kaap, Provinsie Wes-Kaap;
Groot: 952 (Nege Honderd Twee en Vyftig) vierkantemeter;
Gehou kragtens Transportakte Nr. T50652/2002;
53. Erf 232 Zeekoevlei, in die Stad Kaapstad, Afdeling Kaap, Provinsie Wes-Kaap;
Groot: 1306 (Een Duisend Drie Honderd en Ses) vierkantemeter;
Gehou kragtens Transportakte Nr. T50652/2002;

54. Erf 233 Zeekoevlei, in die Stad Kaapstad, Afdeling Kaap, Provinsie Wes-Kaap;
Groot: 816 (Agt Honderd en Sestien) vierkantemeter;
Gehou kragtens Transportakte Nr. T50652/2002;
55. Erf 234 Zeekoevlei, in die Stad Kaapstad, Afdeling Kaap, Provinsie Wes-Kaap;
Groot: 1226 (Een Duisend Twee Honderd Ses en Twintig) vierkantemeter;
Gehou kragtens Transportakte Nr. T50652/2002;
56. Erf 235 Zeekoevlei, in die Stad Kaapstad, Afdeling Kaap, Provinsie Wes-Kaap;
Groot: 938 (Nege Honderd Agt en Dertig) vierkantemeter;
Gehou kragtens Transportakte Nr. T50652/2002;
57. Erf 236 Zeekoevlei, in die Stad Kaapstad, Afdeling Kaap, Provinsie Wes-Kaap;
Groot: 892 (Agt Honderd Twee en Neëntig) vierkantemeter;
Gehou kragtens Transportakte Nr. T50652/2002;
58. Erf 237 Zeekoevlei, in die Stad Kaapstad, Afdeling Kaap, Provinsie Wes-Kaap;
Groot: 847 (Agt Honderd Sewe en Veertig) vierkantemeter;
Gehou kragtens Transportakte Nr. T50652/2002;
59. Erf 238 Zeekoevlei, in die Stad Kaapstad, Afdeling Kaap, Provinsie Wes-Kaap;
Groot: 802 (Agt Honderd en Twee) vierkantemeter;
Gehou kragtens Transportakte Nr. T50652/2002;
60. Erf 239 Zeekoevlei, in die Stad Kaapstad, Afdeling Kaap, Provinsie Wes-Kaap;
Groot: 727 (Sewe Honderd Sewe en Twintig) vierkantemeter;
Gehou kragtens Transportakte Nr. T50652/2002;
61. Erf 240 Zeekoevlei, in die Stad Kaapstad, Afdeling Kaap, Provinsie Wes-Kaap;
Groot: 633 (Ses Honderd Drie en Dertig) vierkantemeter;
Gehou kragtens Transportakte Nr. T50652/2002;
62. Erf 243 Zeekoevlei, in die Stad Kaapstad, Afdeling Kaap, Provinsie Wes-Kaap;
Groot: 707 (Sewe Honderd en Sewe) vierkantemeter;
Gehou kragtens Transportakte Nr. T50652/2002;
63. Erf 244 Zeekoevlei, in die Stad Kaapstad, Afdeling Kaap, Provinsie Wes-Kaap;
Groot: 825 (Agt Honderd Vyf en Twintig) vierkantemeter;
Gehou kragtens Transportakte Nr. T50652/2002;
64. Erf 245 Zeekoevlei, in die Stad Kaapstad, Afdeling Kaap, Provinsie Wes-Kaap;
Groot: 733 (Sewe Honderd Drie en Dertig) vierkantemeter;
Gehou kragtens Transportakte Nr. T50652/2002;
65. Erf 246 Zeekoevlei, in die Stad Kaapstad, Afdeling Kaap, Provinsie Wes-Kaap;
Groot: 767 (Sewe Honderd Sewe en Sestig) vierkantemeter;
Gehou kragtens Transportakte Nr. T50652/2002;

66. Erf 247 Zeekoevlei, in die Stad Kaapstad, Afdeling Kaap, Provinsie Wes-Kaap;
Groot: 754 (Sewe Honderd Vier en Vyftig) vierkantemeter;
Gehou kragtens Transportakte Nr. T50652/2002;
67. Erf 248 Zeekoevlei, in die Stad Kaapstad, Afdeling Kaap, Provinsie Wes-Kaap;
Groot: 697 (Ses Honderd Sewe en Neëntig) vierkantemeter;
Gehou kragtens Transportakte Nr. T50652/2002;
68. Erf 249 Zeekoevlei, in die Stad Kaapstad, Afdeling Kaap, Provinsie Wes-Kaap;
Groot: 785 (Sewe Honderd Vyf en Tagtig) vierkantemeter;
Gehou kragtens Transportakte Nr. T50652/2002;
69. Erf 250 Zeekoevlei, in die Stad Kaapstad, Afdeling Kaap, Provinsie Wes-Kaap;
Groot: 785 (Sewe Honderd Vyf en Tagtig) vierkantemeter;
Gehou kragtens Transportakte Nr. T50652/2002;
70. Erf 251 Zeekoevlei, in die Stad Kaapstad, Afdeling Kaap, Provinsie Wes-Kaap;
Groot: 785 (Sewe Honderd Vyf en Tagtig) vierkantemeter;
Gehou kragtens Transportakte Nr. T50652/2002;
71. Erf 252 Zeekoevlei, in die Stad Kaapstad, Afdeling Kaap, Provinsie Wes-Kaap;
Groot: 785 (Sewe Honderd Vyf en Tagtig) vierkantemeter;
Gehou kragtens Transportakte Nr. T50652/2002;
72. Erf 253 Zeekoevlei, in die Stad Kaapstad, Afdeling Kaap, Provinsie Wes-Kaap;
Groot: 739 (Sewe Honderd Nege en Dertig) vierkantemeter;
Gehou kragtens Transportakte Nr. T50652/2002;
73. Erf 254 Zeekoevlei, in die Stad Kaapstad, Afdeling Kaap, Provinsie Wes-Kaap;
Groot: 909 (Nege Honderd en Nege) vierkantemeter;
Gehou kragtens Transportakte Nr. T50652/2002;
74. Erf 255 Zeekoevlei, in die Stad Kaapstad, Afdeling Kaap, Provinsie Wes-Kaap;
Groot: 259 (Twee Honderd Nege en Vyftig) vierkantemeter;
Gehou kragtens Transportakte Nr. T50652/2002;
75. Erf 256 Zeekoevlei, in die Stad Kaapstad, Afdeling Kaap, Provinsie Wes-Kaap;
Groot: 259 (Twee Honderd Nege en Vyftig) vierkantemeter;
Gehou kragtens Transportakte Nr. T50652/2002;
76. Erf 257 Zeekoevlei, in die Stad Kaapstad, Afdeling Kaap, Provinsie Wes-Kaap;
Groot: 259 (Twee Honderd Nege en Vyftig) vierkantemeter;
Gehou kragtens Transportakte Nr. T50652/2002;
77. Erf 93374 Kaapstad, in die Stad Kaapstad, Afdeling Kaap, Provinsie Wes-Kaap;
Groot: 169,0306 (Een Honderd Nege en Sestig komma Nul Drie Nul Ses) hektaar;
Gehou kragtens Grondbrief Nr. T5174/1975;

78. Erf 974 Schaapkraal, in die Stad Kaapstad, Afdeling Kaap, Provinsie Wes-Kaap;
Groot: 11,9567 (Elf komma Nege Vyf Ses Sewe) hektaar;
Gehou kragtens Transportakte Nr. T51679/1988;
79. Plaas Nr. 837, in die Stad Kaapstad, Afdeling Kaap, Provinsie Wes-Kaap;
Groot: 3,4261 (Drie komma Vier Twee Ses Een) hektaar;
Gehou kragtens Transportakte Nr. T7147/1920;
80. Farm No. 838, in die Stad Kaapstad, Afdeling Kaap, Provinsie Wes-Kaap;
Groot: 10,7438 (Tien komma Sewe Vier Drie Agt) hektaar;
Gehou kragtens Transportakte Nr. T7147/1920;
81. Restant van Gedeelte 1 van die Plaas Nr. 840, in die Stad Kaapstad, Afdeling Kaap, Provinsie Wes-Kaap;
Groot: 198,6578 (Een Honderd Agt en Neëntig komma Ses Vyf Sewe Agt) hektaar;
Gehou kragtens Transportakte Nr. T7147/1920;
82. Restant van Erf 87375 Kaapstad, in die Stad Kaapstad, Afdeling Kaap, Provinsie Wes-Kaap;
Groot: 38,1817 (Agt en Dertig komma Een Agt Een Sewe) hektaar;
Gehou kragtens Sertifikaat van Verenigde Titel Nr. T7449/1998;
83. Erf 1 Capricorn, in die Stad Kaapstad, Afdeling Kaap, Provinsie Wes-Kaap;
Groot: 127,6840 (Een Honderd Sewe en Twintig komma Ses Agt Vier Nul) hektaar;
Gehou kragtens Sertifikaat van Verenigde Titel Nr. T7455/1998;
84. Restant van Erf 82047 Kaapstad, in die Stad Kaapstad, Afdeling Kaap, Provinsie Wes-Kaap;
Groot: 4164 (Vier Duisend Een Honderd Vier en Sestig) vierkantemeter;
Gehou kragtens Transportakte Nr. T8467/1978;
85. Erf 837 Zeekoevlei, in die Stad Kaapstad, Afdeling Kaap, Provinsie Wes-Kaap;
Groot: 1101 (Een Duisend Een Honderd en Een) vierkantemeter;
Gehou kragtens Transportakte Nr. T9142/1971;
86. Erf 1775 Grassy Park, in die Stad Kaapstad, Afdeling Kaap, Provinsie Wes-Kaap;
Groot: 7232 (Sewe Duisend Twee Honderd Twee en Dertig) vierkantemeter;
Gehou kragtens Transportakte Nr. T9302/1967;
87. Restant van Erf 1212 Mitchells Plain, in die Stad Kaapstad, Afdeling Kaap, Provinsie Wes-Kaap;
Groot: 369,1392 (Drie Honderd Nege en Sestig komma Een Drie Nege Twee) hektaar,
Gehou kragtens Grondbrief Nr. G74/1970; en
88. Erf 174577 Kaapstad, in die Stad Kaapstad, Afdeling Kaap, Provinsie Wes-Kaap;
Groot: 2,2959 (Twee komma Twee Nege Vyf Nege) hektaar;
Gehou kragtens Sertifikaat van Geregistreerde Titel Nr. T15982/2013.

Ek ken die naam “Valsbaai Natuurreservaat” toe aan die reservaat, waarvan die grense weergegee word op die kaart soos uiteengesit in die Bylae.

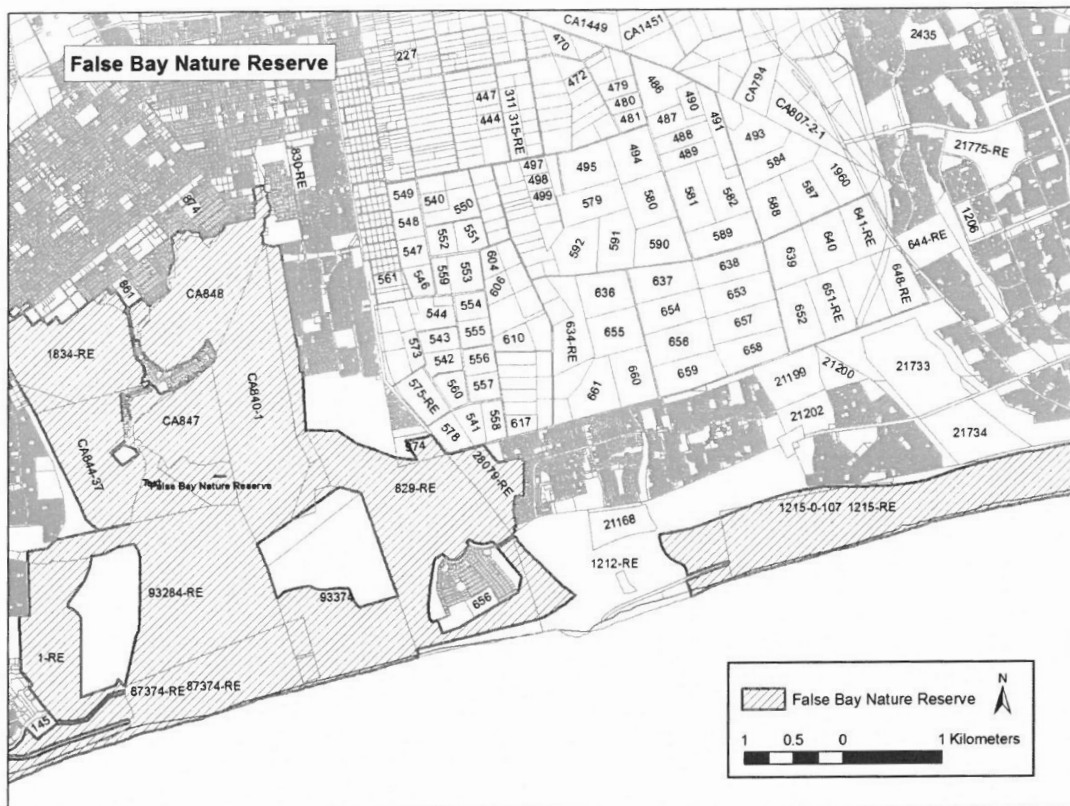
Die goedgekeurde Landmeter-generaal-diagramme ten opsigte van die eiendomme waaruit die Valsbaai Natuurreservaat bestaan, met die nommers 3574/1905, 6958/1952, 3603/2011, 2954/2011, 967/2012, 2720/2012, 6028/1978, 4786/1937, 957/2012, 1246/1949, 9123/1967, 3146/1981, 9688/1970, 6653/1974, 7517/1960, 5149/1943, 6507/1950, 2131/1963, 357/1968, 3465/1939, 2972/1944, 2791/1943, 2131/1963, 1629/2012, 2131/1963, 6098/1949, 2131/1963, 6271/1973, 3465/1939, 1170/1922, 3627/1942, 1437/1990, 966/2012, 7716/1965, 3915/2011, 2131/1963, 2964/2011, 4378/2011, 31/1790, 955/2012, 956/2012, 4369/2011, 4368/2011, 4766/1944, 7127/1970, 8876/1918, 5439/1961, 3911/2011, 3912/2011, 3913/2011, 3914/2011 en 1454/2012, is vir insae beskikbaar by CapeNature se hoofkantoor, te h.v. Bosduif- en Volstruisstraat, Bridgetown, Athlone.

Geteken te Kaapstad op hede die 11^{de} dag van Maart 2019.

A BREDELL

PROVINSIALE MINISTER VAN PLAASLIKE REGERING, OMGEWINGSAKE EN ONTWIKKELINGSBEPLANNING

BYLAE



PROVINCIAL NOTICE

I.S. 35/2019

22 kweyoKwindla 2019

ISEBE LEMICIMBI YOKUSINGQONGILEYO NOCWANGCISO LOPHUHLISO**I-NATIONAL ENVIRONMENTAL MANAGEMENT: PROTECTED AREAS ACT, 2003
(UMTHETHO 57 KA-2003):****ISIBHENGEZO SENDAWO YOLONDOLOZO LWENDALO YASEFALSE BAY**

Mna, Anton Bredell, uMphathiswa wePhondo wooRhulumente beNdawo, iMicimbi yokuSingqongileyo noCwangciso loPhuhliso eNtshona Koloni, ngaphantsi kwecandelo 23(1)(a)(i) loMthetho woLawulo lokusiNgqongileyo kuZwelonke: iiNdawo eziKhuselweyo, 2003 (uMthetho 57 ka-2003), ndibhengeze ulondolozo lwendalo kwi:

1. Isiza esingu-115790 eKapa, kwiSixeko saseKapa, iCandelo leKapa, iPhondo leNtshona Koloni;
Ubungakanani: 11,9914 (IShumi elinaNye khoma iThoba iThoba isiNye isiNe) behektare;
Ephantsi kweSiqinisekiso soBonelelo ngoMhlaba (Ivoluyumu yesi-25 yaBantu baseKapa abanomhlaba ongowabo kwiNombolo yephepha eli-15) yomhla wama-27 Novemba 1905);
2. IFama enguNombolo 846 eZeekoe Vlei West, kwisiXeko saseKapa, iCandelo leKapa, iPhondo leNtshona Koloni;
Ubungakanani: 26,3198 (AmaShumi amaThandathu khoma isiThathu isiNye iThoba isiBhozo) beeHektare;
Ephantsi kweSiqinisekiso soBonelelo ngoMhlaba esinguNombolo-G125/1953;
3. Intsalela yeSiza esingu-93284 eKapa, kwiSixeko saseKapa, iCandelo leKapa, iPhondo leNtshona Koloni;
Ubungakanani: 309,9528 (AmaKhulu amaThathu aneThoba Khoma iThoba isiHlanu isiBini isiBhozo) beeHektare;
Ephantsi kweSiqinisekiso soBonelelo ngoMhlaba esinguNombolo-G153/1954;
4. Intsalela yeSiza esingu-87374 eKapa, kwiSixeko saseKapa, iCandelo leKapa, iPhondo leNtshona Koloni;
Ubungakanani: 195,5776 (IKhulu elinamaShumi aliThoba nesiHlanu khoma isiHlanu isiXhenxe isiXhenxe isiThandathu) beeHektare
Ephantsi kweSiqinisekiso soBonelelo ngoMhlaba esinguNombolo-G17/1964;
5. Intsalela yeSiza esingu-87403 eKapa, kwiSixeko saseKapa, iCandelo leKapa, iPhondo leNtshona Koloni;
Ubungakanani: 3942 (AmaWaka amaThathu amaKhulu aliThoba anamaShumi amaNe anesiBini) eemitha zeSikwere;
Ephantsi kweSiqinisekiso soBonelelo ngoMhlaba esinguNombolo-G5/1939;
6. IFama enguNombolo 847 eZeekoe Vlei West, kwisiXeko saseKapa, iCandelo leKapa, iPhondo leNtshona Koloni;
Ubungakanani: 59,4433 (AmaShumi amaHlanu aneThoba khoma isiNe isiNe isiThathu isiThathu) beeHektare;
Ephantsi kweSiqinisekiso soBonelelo ngoMhlaba esinguNombolo-G71/1941;

7. Intsalela yeFama enguNombolo 848 eZeekoe Vlei West, kwiSixeko saseKapa, iCandelo leCaledon, iPhondo leNtshona Koloni;
Ubungakanani: 119,1294 (IKhulu neShumi elineThoba khoma isiNye isiBini iThoba isiNe) beeHektare;
Ephantsi kweSiqinisekiso soBonelelo ngoMhlaba esinguNombolo-G71/1941;
8. Isiza esingu-62 eZeekoevlei, kwiSixeko saseKapa, iCandelo leKapa, iPhondo leNtshona Koloni;
Ubungakanani: 8208 (AmaWaka asiBhozo amaKhulu amaBini anesiBhozo) Eemitha zesikwere;
Ephantsi kweSiqinisekiso soNikezelo loMhlaba esinguNombolo-T10790/1968;
9. Isiza esingu-730 eZeekoevlei, kwiSixeko saseKapa, iCandelo leKapa, iPhondo leNtshona Koloni;
Ubungakanani: 3,0481 (IsiThathu khoma iQanda isiNye isiBhozo isiNye);
Ephantsi kweSiqinisekiso soNikezelo loMhlaba esinguNombolo-T10790/1968;
10. Intsalela yesiza esingu-111018 eKapa, kwiSixeko saseKapa, iCandelo leKapa, iPhondo leNtshona Koloni;
Ubungakanani: 9292 (AmaWaka aliThoba amaKhulu amaBini amaShumi aliThoba anesiBini) Eemitha zesikwere;
Ephantsi kweSatifikethi seSiqinisekiso seTayitile eneSihlomelo esinguNombolo-T11451/1985;
11. Intsalela yeSiza esingu-70 eZeekoevlei, kwiSixeko saseKapa, iCandelo leKapa, iPhondo leNtshona Koloni;
Ubungakanani: 3003 (AmaWaka amaThathu anesiThathu) Eemitha zesikwere;
Ephantsi kweSiqinisekiso soNikezelo loMhlaba esinguNombolo-T11685/1976;
12. Isiza esingu-1076 eZeekoevlei (Indawo kaWonke-wonke), kwiSixeko saseKapa, iCandelo leKapa, iPhondo leNtshona Koloni;
Ubungakanani: 4,5594 (IsiNe khoma isiHlanu isiHlanu iThoba isiNe) beeHektare;
Ephantsi kweSiqinisekiso soNikezelo loMhlaba esinguNombolo-T11685/1976;
13. Intsalela yeSiza esingu-87407 eKapa, kwiSixeko saseKapa, iCandelo leKapa, iPhondo leNtshona Koloni;
Ubungakanani: 2106 (AmaWaka amaBini iKhulu nesiThandathu) Eemitha zesikwere;
Ephantsi kweSiqinisekiso soNikezelo loMhlaba esinguNombolo-T12477/1964;
14. Isiza esingu-650 eZeekoevlei, kwiSixeko saseKapa, iCandelo leKapa, iPhondo leNtshona Koloni;
Ubungakanani: 9964 (AmaWaka aliThoba amaKhulu aliThoba namaShumi amaThandathu anesiNe) Eemitha zesikwere;
Ephantsi kweSiqinisekiso soNikezelo loMhlaba esinguNombolo-T13637/1968;

15. Intsalela yeSiza esingu-1834 eGrassy Park, kwiSixeko saseKapa, iCandelo leKapa, iPhondo leNtshona Koloni;
Ubungakanani: 105,6386 (IKhulu elinesiHlanu khoma isiThandathu isiThathu isiBhozo isiThandathu) beeHektare;
Ephantsi kweSatifikethi seSiqinisekiso seTayitile eneSihlomelo esinguNombolo-T1532/1966;
16. Isiza esingu-143 eZeekoevlei, kwiSixeko saseKapa, iCandelo leKapa, iPhondo leNtshona Koloni;
Ubungakanani: 809 (AmaKhulu asiBhozo aneThoba) Eemitha zesikwere;
Ephantsi kweSiqinisekiso soNikezelo loMhlaba esinguNombolo-T1534/1966;
17. Isiza esingu-738 eZeekoevlei, kwiSixeko saseKapa, iCandelo leKapa, iPhondo leNtshona Koloni;
Ubungakanani: 7,1739 (IsiXhenxe khoma isiNye isiXhenxe isiThathu iThoba) beeHektare;
Ephantsi kweSiqinisekiso soNikezelo loMhlaba esinguNombolo-T16832/1968;
18. Isiza esingu-82287 eKapa, kwiSixeko saseKapa, iCandelo leKapa, iPhondo leNtshona Koloni;
Ubungakanani: 4716 (AmaWaka amane amaKhulu asiXhenxe neShumi elinesiThandathu) Eemitha zesikwere;
Ephantsi kweSiqinisekiso soNikezelo loMhlaba esinguNombolo-T19380/1972;
19. Isiza esingu-82071 eKapa, kwiSixeko saseKapa, iCandelo leKapa, iPhondo leNtshona Koloni;
Ubungakanani: 4239 (AmaWaka amane amaKhulu amaBini namaShumi amaThathu aneThoba) Eemitha zesikwere;
Ephantsi kweSiqinisekiso soNikezelo loMhlaba esinguNombolo-T21739/1971;
20. Isiza esingu-241 eZeekoevlei, kwiSixeko saseKapa, iCandelo leKapa, iPhondo leNtshona Koloni;
Ubungakanani: 2827 (AmaWaka amaBini amaKhulu asiBhozo namaShumi amaBini anesiXhenxe) Eemitha zesikwere;
Ephantsi kweSiqinisekiso soNikezelo loMhlaba esinguNombolo-T22353/1965;
21. Isiza esingu-264 eZeekoevlei, kwiSixeko saseKapa, iCandelo leKapa, iPhondo leNtshona Koloni;
Ubungakanani: 20 (AmaShumi amaBini) Eemitha zesikwere;
Ephantsi kweSiqinisekiso soNikezelo loMhlaba esinguNombolo-T22355/1965;
22. Intsalela yeSiza esingu-28079 eMitchells Plain, kwiSixeko saseKapa, iCandelo leKapa, iPhondo leNtshona Koloni;
Ubungakanani: 122,7367 (IKhulu namaShumi amaBini anesiBini khoma isiXhenxe isiThathu isiThandathu isiXhenxe) beeHektare;
Ephantsi kweSatifikethi seTayitile eBhalisiweyo enguNombolo T26069/1983;

23. Isiza esingu-263 eZeekoevlei, kwiSixeko saseKapa, iCandelo leKapa, iPhondo leNtshona Koloni;
Ubungakanani: 9,2667 (IThoba khoma isiBini isiThandathu isiThandathu isiXhenxe) beeHektare;
Ephantsi kweSatifikethi seTayitile eBhalisiweyo enguNombolo T2806/1965;
24. Isiza esingu-138 eZeekoevlei (Indawo kaWonke-wonke), kwiSixeko saseKapa, iCandelo leKapa, iPhondo leNtshona Koloni;
Ubungakanani: 1,8052 (IsiNye khoma isiBhozo iQanda isiHlanu isiBini) beeHektare;
Ephantsi kweSiqinisekiso soNikezelo loMhlaba esinguNombolo-T78879/2016;
25. Isiza esingu-262 eZeekoevlei, kwiSixeko saseKapa, iCandelo leKapa, iPhondo leNtshona Koloni;
Ubungakanani: 149 (IKhulu namaShumi amane aneThoba) eemitha zesikwere;
Ephantsi kweSatifikethi seTayitile eBhalisiweyo enguNombolo T2806/1965;
26. Intsalela yeSiza esingu-7042 eGrassy Park, kwiSixeko saseKapa, iCandelo leKapa, iPhondo leNtshona Koloni;
Ubungakanani: 1,0439 (IsiNye khoma iQanda isiNe isiThathu iThoba) beeHektare;
Ephantsi kweSatifikethi seSiqinisekiso seTayitile eneSihlomelo esinguNombolo-T29272/1979;
27. Isiza esingu-82288 eKapa, kwiSixeko saseKapa, iCandelo leKapa, iPhondo leNtshona Koloni;
Ubungakanani: 3969 (AmaWaka amaThathu anamaKhulu aliThoba namaShumi amaThandathu aneThoba) Eemitha zesikwere;
Ephantsi kweSiqinisekiso soNikezelo loMhlaba esinguNombolo-T29648/1970;
28. Isiza esingu-82289 eKapa, kwiSixeko saseKapa, iCandelo leKapa, iPhondo leNtshona Koloni;
Ubungakanani: 3691 (AmaWaka amaThathu amaKhulu amaThandathu namaShumi aliThoba anaNye) eemitha zesikwere;
Ephantsi kweSiqinisekiso soNikezelo loMhlaba esinguNombolo-T29648/1970;
29. Intsalela yeSiza esingu-82070 eKapa, kwiSixeko saseKapa, iCandelo leKapa, iPhondo leNtshona Koloni;
Ubungakanani: 2061 (AmaWaka amaBini namaShumi amaThandathu anaNye) Eemitha zesikwere;
Ephantsi kweSiqinisekiso soNikezelo loMhlaba esinguNombolo-T30142/1974;
30. ISiqendu 37 (iSiqendu seSiqendu 2) seFama iGrassy Park enguNombolo-844, kwiSixeko saseKapa, iCandelo leKapa, iPhondo leNtshona Koloni;
Ubungakanani: 90,4915 (AmaShumi aliThoba khoma isiNe iThoba isiNye isiHlanu) beeHektare;
Ephantsi kweSiqinisekiso soNikezelo loMhlaba esinguNombolo-T37522/1990;

31. Intsalela yeSiza esingu-829 ePelikan Park, eKapa, kwiSixeko saseKapa, iCandelo leKapa, iPhondo leNtshona Koloni;
Ubungakanani: 381,1759 (AmaKhulu amaThathu amaShumi asiBhozo anaNye khoma isiNye isiXhenxe isiHlanu iThoba) beehektare;
Ephantsi kweSatifikethi seSiqinisekiso seTayitile eneSihlomelo esinguNombolo-T38419/1989;
32. ISiqendu 31 (iSiqendu seSiqendu 2) seFama iGrassy Park enguNombolo-844, kwiSixeko saseKapa, iCandelo leKapa, iPhondo leNtshona Koloni;
Ubungakanani: 27,2356 (AmaShumi amaBini anesiXhenxe khona isiBini isiThathu isiHlanu isiThandathu) beeHektare;
Ephantsi kweSiqinisekiso soNikezelo loMhlaba esinguNombolo-T4739/1967;
33. Intsalela yeSiza esingu-1215 eMitchells Plain, kwiSixeko saseKapa, iCandelo leKapa, iPhondo leNtshona Koloni;
Ubungakanani: 221,8287 (AmaKhulu amaBini amaShumi amaBini anaNye khoma isiBhozo isiBini isiBhozo isiXhenxe) beeHektare;
Ephantsi kweSiqinisekiso soBonelelo ngoMhlaba esinguNombolo-G260/1958;
34. Isiza esingu-212 eZeekoevlei, kwiSixeko saseKapa, iCandelo leKapa, iPhondo leNtshona Koloni;
Ubungakanani: 614 (AmaKhulu amaThandathu neShumi elinesiNe) Eemitha zesikwere;
Ephantsi kweSiqinisekiso soNikezelo loMhlaba esinguNombolo-T50652/2002;
35. Isiza esingu-213 eZeekoevlei, kwiSixeko saseKapa, iCandelo leKapa, iPhondo leNtshona Koloni;
Ubungakanani: 750 (AmaKhulu asiXhenxe namaShumi amaHlanu) Eemitha zesikwere;
Ephantsi kweSiqinisekiso soNikezelo loMhlaba esinguNombolo-T50652/2002;
36. Isiza esingu-214 eZeekoevlei, kwiSixeko saseKapa, iCandelo leKapa, iPhondo leNtshona Koloni;
Ubungakanani: 895 (AmaKhulu asiBhozo namaShumi aliThoba anesiHlanu) eemitha zeSikwere;
Ephantsi kweSiqinisekiso soNikezelo loMhlaba esinguNombolo-T50652/2002;
37. Isiza esingu-215 eZeekoevlei, kwiSixeko saseKapa, iCandelo leKapa, iPhondo leNtshona Koloni;
Ubungakanani: 1147 (IWaka neKhulu elinamaShumi amaNe anesiXhenxe) Eemitha zesikwere;
Ephantsi kweSiqinisekiso soNikezelo loMhlaba esinguNombolo-T50652/2002;
38. Isiza esingu-216 eZeekoevlei, kwiSixeko saseKapa, iCandelo leKapa, iPhondo leNtshona Koloni;
Ubungakanani: 1449 (IWaka namaKhulu amaNe namaShumi amaNe aneThoba) Eemitha zesikwere;
Ephantsi kweSiqinisekiso soNikezelo loMhlaba esinguNombolo-T50652/2002;

39. Isiza esingu217 eZeekoevlei, kwiSixeko saseKapa, iCandelo leKapa, iPhondo leNtshona Koloni;
Ubungakanani: 1461 (IWaka namaKhulu amaNe namaShumi amaThandathu anaNye) Eemitha zesikwere;
Ephantsi kweSiqinisekiso soNikezelo loMhlaba esinguNombolo-T50652/2002;
40. Isiza esingu-218 eZeekoevlei, kwiSixeko saseKapa, iCandelo leKapa, iPhondo leNtshona Koloni;
Ubungakanani: 1389 (IWaka namaKhulu amaThathu namaShumi asiBhozo aneThoba) Eemitha zesikwere;
Ephantsi kweSiqinisekiso soNikezelo loMhlaba esinguNombolo-T50652/2002;
41. Isiza esingu-219 eZeekoevlei, kwiSixeko saseKapa, iCandelo leKapa, iPhondo leNtshona Koloni;
Ubungakanani: 1280 (IWaka eliNye amaKhulu amaBini namaShumi asiBhozo)eemitha zeSikwere;
Ephantsi kweSiqinisekiso soNikezelo loMhlaba esinguNombolo-T50652/2002;
42. Isiza esingu-220 eZeekoevlei, kwiSixeko saseKapa, iCandelo leKapa, iPhondo leNtshona Koloni;
Ubungakanani: 1461 (IWaka namaKhulu amaNe namaShumi amaThandathu anaNye) Eemitha zesikwere;
Ephantsi kweSiqinisekiso soNikezelo loMhlaba esinguNombolo-T50652/2002;
43. Isiza esingu-221 eZeekoevlei, kwiSixeko saseKapa, iCandelo leKapa, iPhondo leNtshona Koloni;
Ubungakanani: 1216 (IWaka namaKhulu amaBini neShumi elinesiThandathu)Eemitha zesikwere;
Ephantsi kweSiqinisekiso soNikezelo loMhlaba esinguNombolo-T50652/2002;
44. Isiza esingu-223 eZeekoevlei, kwiSixeko saseKapa, iCandelo leKapa, iPhondo leNtshona Koloni;
Ubungakanani: 769 (AmaKhulu asiXhenxe namaShumi amaThandathu aneThoba) Eemitha zesikwere;
Ephantsi kweSiqinisekiso soNikezelo loMhlaba esinguNombolo-T50652/2002;
45. Isiza esingu-224 eZeekoevlei, kwiSixeko saseKapa, iCandelo leKapa, iPhondo leNtshona Koloni;
Ubungakanani: 703 (AmaKhulu asiXhenxe anesiThathu) Eemitha zesikwere;
Ephantsi kweSiqinisekiso soNikezelo loMhlaba esinguNombolo-T50652/2002;
46. Isiza esingu-225 eZeekoevlei, kwiSixeko saseKapa, iCandelo leKapa, iPhondo leNtshona Koloni;
Ubungakanani: 655 (AmaKhulu amaThandathu namaShumi amaHlanu anesiHlanu) Eemitha zesikwere;
Ephantsi kweSiqinisekiso soNikezelo loMhlaba esinguNombolo-T50652/2002;

47. Isiza esingu-226 eZeekoevlei, kwiSixeko saseKapa, iCandelo leKapa, iPhondo leNtshona Koloni;
Ubungakanani: 718 (AmaKhulu asiXhenxe neShumi elinesiBhozo) Eemitha zesikwere;
Ephantsi kweSiqinisekiso soNikezelo loMhlaba esinguNombolo-T50652/2002;
48. Isiza esingu-227 eZeekoevlei, kwiSixeko saseKapa, iCandelo leKapa, iPhondo leNtshona Koloni;
Ubungakanani: 598 (AmaKhulu amaHlanu namaShumi aliThoba anesiBhozo) eemitha zeSikwere;
Ephantsi kweSiqinisekiso soNikezelo loMhlaba esinguNombolo-T50652/2002;
49. Isiza esingu-228 eZeekoevlei, kwiSixeko saseKapa, iCandelo leKapa, iPhondo leNtshona Koloni;
Ubungakanani: 608 (AmaKhulu amaThandathu anesiBhozo) Eemitha zesikwere;
Ephantsi kweSiqinisekiso soNikezelo loMhlaba esinguNombolo-T50652/2002;
50. Isiza esingu-229 eZeekoevlei, kwiSixeko saseKapa, iCandelo leKapa, iPhondo leNtshona Koloni;
Ubungakanani: 598 (AmaKhulu amaHlanu namaShumi aliThoba anesiBhozo) eemitha zeSikwere;
Ephantsi kweSiqinisekiso soNikezelo loMhlaba esinguNombolo-T50652/2002;
51. Isiza esingu-230 eZeekoevlei, kwiSixeko saseKapa, iCandelo leKapa, iPhondo leNtshona Koloni;
Ubungakanani: 683 (AmaKhulu amaThandathu namaShumi asiBhozo anesiThathu) Eemitha zesikwere;
Ephantsi kweSiqinisekiso soNikezelo loMhlaba esinguNombolo-T50652/2002;
52. Isiza esingu-231 eZeekoevlei, kwiSixeko saseKapa, iCandelo leKapa, iPhondo leNtshona Koloni;
Ubungakanani: 952 (AmaKhulu aliThoba namaShumi amaHlanu anesiBini) Eemitha zesikwere;
Ephantsi kweSiqinisekiso soNikezelo loMhlaba esinguNombolo-T50652/2002;
53. Isiza esingu-232 eZeekoevlei, kwiSixeko saseKapa, iCandelo leKapa, iPhondo leNtshona Koloni;
Ubungakanani: 1306 (IWaka namaKhulu amaThathu anesiThandathu) Eemitha zesikwere;
Ephantsi kweSiqinisekiso soNikezelo loMhlaba esinguNombolo-T50652/2002;
54. Isiza esingu-233 eZeekoevlei, kwiSixeko saseKapa, iCandelo leKapa, iPhondo leNtshona Koloni;
Ubungakanani: 816 (AmaKhulu asiBhozo neShumi elinesiThandathu) Eemitha zesikwere;
Ephantsi kweSiqinisekiso soNikezelo loMhlaba esinguNombolo-T50652/2002;
55. Isiza esingu-234 eZeekoevlei, kwiSixeko saseKapa, iCandelo leKapa, iPhondo leNtshona Koloni;
Ubungakanani: 1226 (IWaka namaKhulu amaBini namaShumi amaBini anesiThandathu) Eemitha zesikwere;
Ephantsi kweSiqinisekiso soNikezelo loMhlaba esinguNombolo-T50652/2002;

56. Isiza esingu-235 eZeekoevlei, kwiSixeko saseKapa, iCandelo leKapa, iPhondo leNtshona Koloni;
Ubungakanani: 938 (AmaKhulu aliThoba namaShumi amaThatu anesiBhozo) Eemitha zesikwere;
Ephantsi kweSiqinisekiso soNikezelo loMhlaba esinguNombolo-T50652/2002;
57. Isiza esingu-236 eZeekoevlei, kwiSixeko saseKapa, iCandelo leKapa, iPhondo leNtshona Koloni;
Ubungakanani: 892 (AmaKhulu asiBhozo namaShumi aliThoba anesiBini) Eemitha zesikwere;
Ephantsi kweSiqinisekiso soNikezelo loMhlaba esinguNombolo-T50652/2002;
58. Isiza esingu-237 eZeekoevlei, kwiSixeko saseKapa, iCandelo leKapa, iPhondo leNtshona Koloni;
Ubungakanani: 847 (AmaKhulu asiBhozo namaShumi amaNe anesiXhenxe) Eemitha zesikwere;
Ephantsi kweSiqinisekiso soNikezelo loMhlaba esinguNombolo-T50652/2002;
59. Isiza esingu-238 eZeekoevlei, kwiSixeko saseKapa, iCandelo leKapa, iPhondo leNtshona Koloni;
Ubungakanani: 802 (AmaKhulu asiBhozo anesiBini) Eemitha zesikwere;
Ephantsi kweSiqinisekiso soNikezelo loMhlaba esinguNombolo-T50652/2002;
60. Isiza esingu-239 eZeekoevlei, kwiSixeko saseKapa, iCandelo leKapa, iPhondo leNtshona Koloni;
Ubungakanani: 727 (AmaKhulu asiXhenxe namaShumi amaBini anesiXhenxe) Eemitha zesikwere;
Ephantsi kweSiqinisekiso soNikezelo loMhlaba esinguNombolo-T50652/2002;
61. Isiza esingu-240 eZeekoevlei, kwiSixeko saseKapa, iCandelo leKapa, iPhondo leNtshona Koloni;
Ubungakanani: 633(AmaKhulu amaThandathu namaShumi amaThatu anesiThatu) Eemitha zesikwere;
Ephantsi kweSiqinisekiso soNikezelo loMhlaba esinguNombolo-T50652/2002;
62. Isiza esingu-243 eZeekoevlei, kwiSixeko saseKapa, iCandelo leKapa, iPhondo leNtshona Koloni;
Ubungakanani: 707 (AmaKhulu asiXhenxe anesiXhenxe) Eemitha zesikwere;
Ephantsi kweSiqinisekiso soNikezelo loMhlaba esinguNombolo-T50652/2002;
63. Isiza esingu-244 eZeekoevlei, kwiSixeko saseKapa, iCandelo leKapa, iPhondo leNtshona Koloni;
Ubungakanani: 825 (AmaKhulu asiBhozo amaShumi amaBini anesiHlanu) Eemitha zesikwere;
Ephantsi kweSiqinisekiso soNikezelo loMhlaba esinguNombolo-T50652/2002;

64. Isiza esingu-245 eZeekoevlei, kwiSixeko saseKapa, iCandelo leKapa, iPhondo leNtshona Koloni;
Ubungakanani: 733 (AmaKhulu asiXhenxe namaShumi amaThatu anesiThatu)) Eemitha zesikwere;
Ephantsi kweSiqinisekiso soNikezelo loMhlaba esinguNombolo-T50652/2002;
65. Isiza esingu-246 eZeekoevlei, kwiSixeko saseKapa, iCandelo leKapa, iPhondo leNtshona Koloni;
Ubungakanani: 767 (AmaKhulu asiXhenxe namaShumi amaThandathu anesiXhenxe)) Eemitha zesikwere;
Ephantsi kweSiqinisekiso soNikezelo loMhlaba esinguNombolo-T50652/2002;
66. Isiza esingu-247 eZeekoevlei, kwiSixeko saseKapa, iCandelo leKapa, iPhondo leNtshona Koloni;
Ubungakanani: 754 (AmaKhulu asiXhenxe namaShumi amaHlanu anesiNe) Eemitha zesikwere;
Ephantsi kweSiqinisekiso soNikezelo loMhlaba esinguNombolo-T50652/2002;
67. Isiza esingu-248 eZeekoevlei, kwiSixeko saseKapa, iCandelo leKapa, iPhondo leNtshona Koloni;
Ubungakanani: 697(AmaKhulu amaThandathu namaShumi aliThoba anesiXhenxe) Eemitha zesikwere;
Ephantsi kweSiqinisekiso soNikezelo loMhlaba esinguNombolo-T50652/2002;
68. Isiza esingu-249 eZeekoevlei, kwiSixeko saseKapa, iCandelo leKapa, iPhondo leNtshona Koloni;
Ubungakanani: 785 (AmaKhulu asiXhenxe namaShumi asiBhozo anesiHlanu) Eemitha zeSikwere;
Ephantsi kweSiqinisekiso soNikezelo loMhlaba esinguNombolo-T50652/2002;
69. Isiza esingu-250 eZeekoevlei, kwiSixeko saseKapa, iCandelo leKapa, iPhondo leNtshona Koloni;
Ubungakanani: 785 (AmaKhulu asiXhenxe namaShumi asiBhozo anesiHlanu) Eemitha zeSikwere;
Ephantsi kweSiqinisekiso soNikezelo loMhlaba esinguNombolo-T50652/2002;
70. Isiza esingu-251 eZeekoevlei, kwiSixeko saseKapa, iCandelo leKapa, iPhondo leNtshona Koloni;
Ubungakanani: 785 (AmaKhulu asiXhenxe namaShumi asiBhozo anesiHlanu) Eemitha zeSikwere;
Ephantsi kweSiqinisekiso soNikezelo loMhlaba esinguNombolo-T50652/2002;
71. Isiza esingu-252 eZeekoevlei, kwiSixeko saseKapa, iCandelo leKapa, iPhondo leNtshona Koloni;
Ubungakanani: 785 (AmaKhulu asiXhenxe namaShumi asiBhozo anesiHlanu) Eemitha zeSikwere;
Ephantsi kweSiqinisekiso soNikezelo loMhlaba esinguNombolo-T50652/2002;

72. Isiza esingu-253 eZeekoevlei, kwiSixeko saseKapa, iCandelo leKapa, iPhondo leNtshona Koloni;
Ubungakanani: 739 (AmaKhulu asiXhenxe namaShumi amaThathu aneThoba) Eemitha zesikwere;
Ephantsi kweSiqinisekiso soNikezelo loMhlaba esinguNombolo-T50652/2002;
73. Isiza esingu-254 eZeekoevlei, kwiSixeko saseKapa, iCandelo leKapa, iPhondo leNtshona Koloni;
Ubungakanani: 909 (AmaKhulu aliThoba aneThoba) Eemitha zesikwere;
Ephantsi kweSiqinisekiso soNikezelo loMhlaba esinguNombolo-T50652/2002;
74. Isiza esingu-255 eZeekoevlei, kwiSixeko saseKapa, iCandelo leKapa, iPhondo leNtshona Koloni;
Ubungakanani: 259 (AmaKhulu amaBini namaShumi amaHlanu aneThoba) Eemitha zesikwere;
Ephantsi kweSiqinisekiso soNikezelo loMhlaba esinguNombolo-T50652/2002;
75. Isiza esingu-256 eZeekoevlei, kwiSixeko saseKapa, iCandelo leKapa, iPhondo leNtshona Koloni;
Ubungakanani: 259 (AmaKhulu amaBini namaShumi amaHlanu aneThoba) Eemitha zesikwere;
Ephantsi kweSiqinisekiso soNikezelo loMhlaba esinguNombolo-T50652/2002;
76. Isiza esingu-257 eZeekoevlei, kwiSixeko saseKapa, iCandelo leKapa, iPhondo leNtshona Koloni;
Ubungakanani: 259 (AmaKhulu amaBini namaShumi amaHlanu aneThoba) Eemitha zesikwere;
Ephantsi kweSiqinisekiso soNikezelo loMhlaba esinguNombolo-T50652/2002;
77. Isiza esingu-93374 eKapa, kwiSixeko saseKapa, iCandelo leKapa, iPhondo leNtshona Koloni;
Ubungakanani: 169,0306 (IKhulu namaShumi amaThandathu aneThoba khoma iQanda isiThathu iQanda) beeHektare;
Ephantsi kweSiqinisekiso soBonelelo ngoMhlaba esinguNombolo-T5174/1975;
78. Isiza esingu-974 eSchaapkraal, kwiSixeko saseKapa, iCandelo leKapa, iPhondo leNtshona Koloni;
Ubungakanani: 11,9567 (IShumi elinaNye khoma iThoba isiHlanu isiThandathu isiXhenxe) beeHektare;
Ephantsi kweSiqinisekiso soNikezelo loMhlaba esinguNombolo-T51679/1988;
79. IFama enguNombolo 837, kwisiXeko saseKapa, iCandelo leKapa, iPhondo leNtshona Koloni;
Ubungakanani: 3,4261 (IsiThathu khoma isiNe isiBini isiThandathu isiNye) beeHektare;
Ephantsi kweSiqinisekiso soNikezelo loMhlaba esinguNombolo-T7147/1920;

80. IFama enguNombolo 838, kwisiXeko saseKapa, iCandelo leKapa, iPhondo leNtshona Koloni;
Ubungakanani: 10,7438 (IShumi khoma isiXhenxe isiNe isiThathu isiBhozo) beeHektare;
Ephantsi kweSiqinisekiso soNikezelo loMhlaba esinguNombolo-T7147/1920;
81. Intsalela yeSiqendu 1 yeFarm enguNombolo-840, kwiSixeko saseKapa, iCandelo leKapa, iPhondo leNtshona Koloni;
Ubungakanani: 198, 6578 (IKhulu namaShumi aliThoba anesiBhozo khoma isiThandathu isiHlanu isiXhenxe isiBhozo) beeHektare;
Ephantsi kweSiqinisekiso soNikezelo loMhlaba esinguNombolo-T7147/1920;
82. Intsalela yeSiza esingu-87375 eKapa, kwiSixeko saseKapa, iCandelo leKapa, iPhondo leNtshona Koloni;
Ubungakanani: 38,1817 (AmaShumi amaThathu anesiBhozo khoma isiNye isiBhozo isiNye isiXhenxe) beeHektare;
Ephantsi kweSatifikethi seSiqinisekiso seTayitile eneSihlomelo esinguNombolo-T7449/1998;
83. Isiza esingu-1 eCapricorn, kwiSixeko saseKapa, iCandelo leKapa, iPhondo leNtshona Koloni;
Ubungakanani: 127,6840 (IKhulu namaShumi amaBini anesiXhenxe khoma isiThandathu isiBhozo isiNe iQanda) beeHektare;
Ephantsi kweSatifikethi seSiqinisekiso seTayitile eneSihlomelo esinguNombolo-T7455/1998;
84. Intsalela yeSiza esingu-82047 eKapa, kwiSixeko saseKapa, iCandelo leKapa, iPhondo leNtshona Koloni;
Ubungakanani: 4164 (AmaWaka amaNe iKhulu namaShumi amaThandathu anesiNe) Eemitha zeSikwere;
Ephantsi kweSiqinisekiso soNikezelo loMhlaba esinguNombolo-T8467/1978;
85. Isiza esingu-837 eZeekoevlei, kwiSixeko saseKapa, iCandelo leKapa, iPhondo leNtshona Koloni;
Ubungakanani: 1101 (IWaka elineKhulu nesiNye) Eemitha zesikwere;
Ephantsi kweSiqinisekiso soNikezelo loMhlaba esinguNombolo-T9142/1971;
86. Isiza esungu-1775 eGrassy Park, kwiSixeko saseKapa, iCandelo leKapa, iPhondo leNtshona Koloni;
Ubungakanani: 7232 (AmaWaka asiXhenxe amaKhulu amaBini namaShumi amaThathu anesiBini) Eemitha zeSikwere;
Ephantsi kweSiqinisekiso soNikezelo loMhlaba esinguNombolo-T9302/1967;
87. Intsalela yeSiza esingu-1212 eMitchells Plain, kwiSixeko saseKapa, iCandelo leKapa, iPhondo leNtshona Koloni;
Ubungakanani: 369,1392 (AmaKhulu amaThathu namaShumi amaThandathu aneThoba khoma isiNye isiThathu iThoba isiBini) beeHektare;
Ephantsi kweSiqinisekiso soBonelelo ngoMhlaba esinguNombolo-G74/1970; kunye

- 88. Isiza esingu-174577 eKapa, kwiSixeko saseKapa, iCandelo leKapa, iPhondo leNtshona Koloni;
 Ubungakanani: 2,2959 (IsiBini khoma isiBini iThoba isiHlanu iThoba) beeHektare;
 Ephantsi kweSatifikethi seTayile eBhalisiweyo enguNombolo T15982/2013.

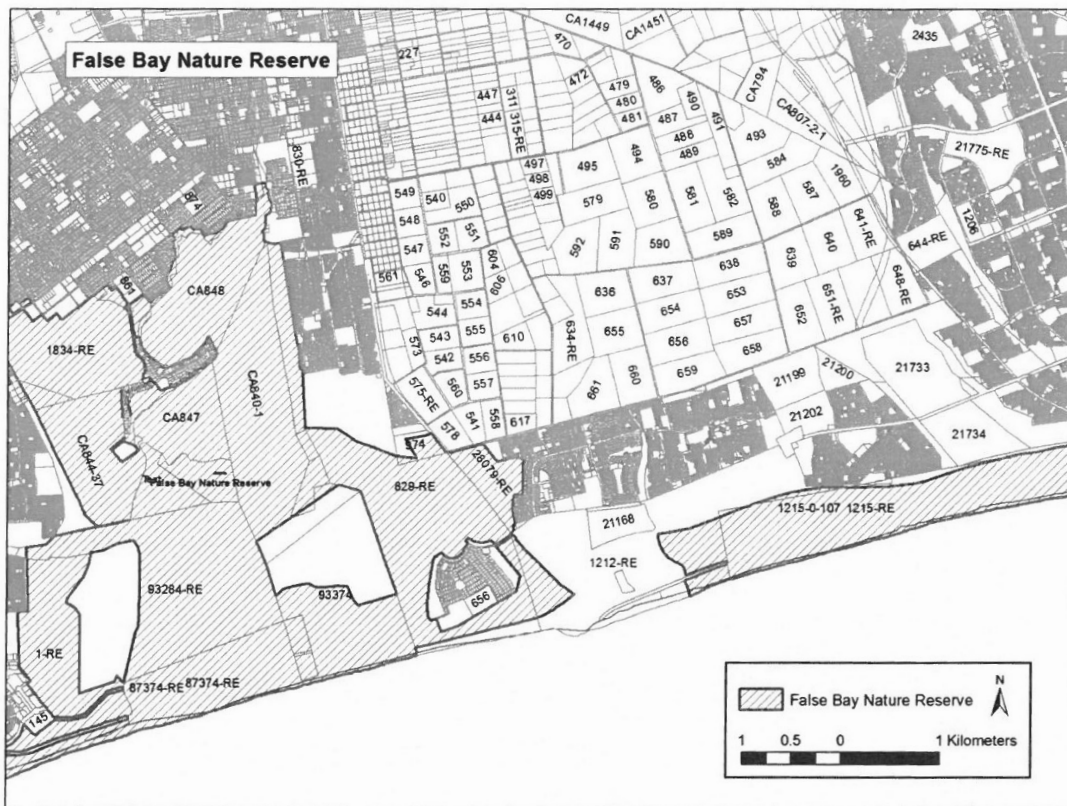
Ndinikezela ngegama elithi “ULondolozo lweNdalo iFalse Bay” kule ndawo yolondolozo, enemida eboniswe kumzobo njengoko kubonisiwe kwiShedyuli.

Iidayagram zikaNocanda-Jikelele eziphunyeziweyo ngokubhekisele kumhlaba wale mimandla yoloNdolozo lweNdalo yaseFalse Bay, ngokwezi nombolo 3574/1905, 6958/1952, 3603/2011, 2954/2011, 967/2012, 2720/2012, 6028/1978, 4786/1937, 957/2012, 1246/1949, 9123/1967, 3146/1981, 9688/1970, 6653/1974, 7517/1960, 5149/1943, 6507/1950, 2131/1963, 357/1968, 3465/1939, 2972/1944, 2791/1943, 2131/1963, 1629/2012, 2131/1963, 6098/1949, 2131/1963, 6271/1973, 3465/1939, 1170/1922, 3627/1942, 1437/1990, 966/2012, 7716/1965, 3915/2011, 2131/1963, 2964/2011, 4378/2011, 31/1790, 955/2012, 956/2012, 4369/2011, 4368/2011, 4766/1944, 7127/1970, 8876/1918, 5439/1961, 3911/2011, 3912/2011, 3913/2011, 3914/2011 yaye 1454/2012 ziyafumaneka ukuba zihlolwe kundlu-nkulu weCapeNature, okwikona. yeziTalato i-Bosduif ne-Volstruis, Bridgetown, Athlone.

Sityikitywe e-Kapa ngalo mhla-11 kwinyanga kweyoKwindla 2019.

A BREDELL
UMPHATHISWA WEPHONDO WOORHULUMENTE BENDAWO, IMICIMBI YOKUSINGQONGILEYO
NOCWANGCISO LOPHUHLISO

ISHEDYULI



TENDERS

N.B. Tenders for commodities/services, the estimated value of which exceeds R20 000, are published in the Government Tender Bulletin, which is obtainable from the Government Printer, Private Bag X85, Pretoria, on payment of a subscription.

NOTICES BY LOCAL AUTHORITIES**STELLENBOSCH MUNICIPALITY****PUBLIC NOTICE CALLING FOR INSPECTION OF THE SUPPLEMENTARY VALUATION ROLL 2018/01-04**

Notice is hereby given in terms of Section 49(1)(a)(i) read together with Section 78(2) of the Local Government: Municipal Property Rates Act, 2004 (Act 6/2004), hereinafter referred to as the "Act", that the Supplementary Valuation Roll for the financial years 1 July 2017 to 30 June 2021 is open for public inspection at the various municipal offices or at website www.stellenbosch.gov.za from **21 March 2019 to 30 April 2019**

An invitation is hereby made in terms of Section 49(1)(a)(ii) read together with Section 78(2) of the Act any owner of property or other person who so desires should lodge an objection with the municipal manager in respect of any matter reflected in, or omitted from, the Supplementary Valuation Roll within the above mentioned period.

Attention is specifically drawn to the fact that in terms of Section 50(2) of the Act an objection must be in relation to a specific individual property and not against the supplementary valuation roll as such. The prescribed form for the lodging of and objection is available on the website www.stellenbosch.gov.za or is obtainable at the municipal offices at the following addresses:

Stellenbosch Municipal Offices: Plein Street, Stellenbosch
Franschhoek Municipal Offices: Hugenote Road, Franschhoek
Pniel Municipal Offices: Main Road, Pniel

Office hours for enquiries: 08h00–16h00

The completed forms must be returned to:

M Blaauw, PO Box 17, STELLENBOSCH, (Tel:021 808 8662)
E-mail: marinda.blaauw@stellenbosch.gov.za

Notice No. 20/2019
File No.: 5/3 Property Valuations

G METTLER, MUNICIPAL MANAGER, Stellenbosch Municipality,
PO Box 17, STELLENBOSCH, 7599

22 March 2019

57676

GEORGE MUNICIPALITY**NOTICE NO. 020/2019****CLOSING OF PORTION OF SKIMMELKRANZ DRIVE ADJOINING ERF 407, HEROLD'S BAY**

Notice is hereby given in terms of Section 43(1)(f) of the Western Cape Land Use Planning Act (LUPA), 2014 (Act 3 of 2014) that the Council has closed a Portion of Skimmelkranz Drive adjoining Erf 407, Herold's Bay and that such closure will take effect from the date on which this notice appears.

(S/6018/1 v.3 p209)

T BOTHA, MUNICIPAL MANAGER, Civic Centre, York Street,
GEORGE, 6530

22 March 2019

57678

TENDERS

L.W. Tenders vir kommoditeite/dienste waarvan die beraamde waarde meer as R20 000 beloop, word in die Staatstenderbulletin gepubliseer wat by die Staatsdrukker, Privaatsak X85, Pretoria, teen betaling van 'n intekengeld verkrygbaar is.

KENNISGEWINGS DEUR PLAASLIKE OWERHEDE**STELLENBOSCH MUNISIPALITEIT****OPENBARE KENNISGEWING WAT BESWARE TEEN DIE 2018/01-04 AANVULLENDE WAARDASIELYS AANVRA**

Kennis geskied hiermee kragtens die bepalings van Artikel 49(1)(a)(i) saamgelees met Artikel 78(2) van die Plaaslike Owerhede: Munisipale Eiendomsbelasting Wet van 2004 (Wet 6/2004) hierna verwys as die "Wet" dat die Aanvullende Waardasielys vir die boekjare 1 Julie 2017 tot 30 Junie 2021 ter insae lê vir openbare inspeksie by die onderskeie munisipale kantore sowel as die raad se webwerf by www.stellenbosch.gov.za vanaf **21 Maart 2019 tot 30 April 2019**.

Geliewe kennis te neem dat enige eienaar van vaste eiendom of enige ander persoon kragtens die bepalings van Artikel 49(1)(a)(i) saamgelees met Artikel 78(2) van die Wet 'n beswaar binne bovermelde tydperk kan indien by die Munisipale Bestuurder ten op sigte van enige aangeleentheid of uitsluitel rakende die eiendomswaardasielyste.

U aandag word spesifiek gevestig op die bepalings van Artikel 50(2) van die Wet wat bepaal dat 'n beswaar na 'n spesifieke eiendom moet verwys en nie na die waardasielys per sé nie. Die voorgeskrewe beswaarvorms is beskikbaar op die webwerf www.stellenbosch.gov.za en by die onderskeie onderstaande munisipale kantore:

Stellenbosch Munisipale Kantore: Pleinstraat, Stellenbosch
Franschhoek Munisipale Kantore: Hugenotestraat, Franschhoek
Pniel Munisipale Kantore: Hoofstraat, Pniel

Kantoor ure vir navrae: 08h00–16h00

Die voltooië vorms moet gestuur word aan:

M Blaauw, Posbus 17, STELLENBOSCH, (Tel:021 808 8662)
E-Pos: marinda.blaauw@stellenbosch.gov.za

Kennisgewing Nr. 20/2019
Lêer Nr: 5/3 Eiendoms Waardasies

G METTLER, MUNISIPALE BESTUURDER, Stellenbosch Munisipaliteit,
Posbus 17, STELLENBOSCH, 7599

22 Maart 2019

57676

GEORGE MUNISIPALITEIT**KENNISGEWING NR 020/2019****SLUITING VAN GEDEELTE VAN SKIMMELKRANZWEG AANGRENSEND AAN ERF 407, HEROLDSBAAI**

Kennisgewing geskied hiermee ingevolge Artikel 43(1)(f) van die Wes-Kaapse Wet op Grondgebruikbeplanning (LUPA), 2014 (Wet 3 van 2014) dat die Raad 'n Gedeelte van Skimmelkranzweg aangrensend aan Erf 407, Heroldsbaai gesluit het en dat gemelde sluiting vanaf die datum waarop hierdie kennisgewing verskyn van krag sal wees.

(S/6018/1 v.3 p209)

T BOTHA, MUNISIPALE BESTUURDER, Burgersentrum, Yorkstraat,
GEORGE, 6530

22 Maart 2019

57678

MOSSSEL BAY MUNICIPALITY

**PUBLIC NOTICE CALLING FOR INSPECTION OF
SUPPLEMENTARY VALUATION ROLL AND
LODGING OF OBJECTIONS**

Notice is hereby given in terms of Section 49(1)(a)(i) read together with Section 78(2) of the Local Government: Municipal Property Rates Act, 2004 (Act No. 6 of 2004), hereinafter referred to as the "Act" that the Supplementary Valuation roll for the 2018/2019 financial years/year is open for public inspection 4th Floor, Valuation Division, Montagu Place Building, Montagu Street, Mossel Bay from 1 April until 30 April 2019.

An invitation is hereby extended in terms of Section 49(1)(a)(ii) read together with Section 78(2) of the Act that any owner of property or other person who so desires should lodge an objection with the municipal manager in respect of any matter reflected in, or omitted from the supplementary valuation roll within the above-mentioned period.

Attention is specifically drawn to the fact that in terms of Section 50(2) of the Act an objection must be in relation to a specific individual property and not against the supplementary valuation roll as such.

The official form for the lodging of an objection is obtainable at the following address: 4th Floor, Valuation Division, Montagu Place Building, Montagu Street, Mossel Bay or website www.mosselbay.gov.za

The completed forms must be returned to the following address: Mossel Bay Municipality, Valuation Division, PO Box 25/Private Bag X29, Mossel Bay 6500. Objections can also be lodged electronically at admin@mosselbay.gov.za. The closing date for the lodging of objections is Tuesday, 30 April 2019.

The Valuation Roll is also available on the municipal website www.mosselbay.gov.za.

For enquiries, please contact Ms. A Geduld at 044 606 5122

ADV THYS GILIOME, MUNICIPAL MANAGER

22 March 2019

57677

SWARTLAND MUNICIPALITY

NOTICE 69/2018/2019**PROPOSED REMOVAL OF RESTRICTIVE
TITLE CONDITION ON ERF 465, YZERFONTEIN**

Notice is hereby given that the Authorized Official, Alwyn Malherbe Zaayman in terms of Section 79(1) of Swartland Municipality By-Law on Municipal Land Use Planning (PG 7741 of 3 March 2017) amend condition E6(b) in Deed of Transfer No. T55296 of 2017 applicable on Erf 465, Yzerfontein as follows:

"E6(b) no building or structure or any portion thereof except boundary walls and fences, shall except with the consent of the Administrator, be erected nearer than 3 metres of the rear boundary common to any adjoining erf, provided that it is with the consent of the local authority."

JJ SCHOLTZ, MUNICIPAL MANAGER, Municipal Offices,
Private Bag X52, MALMESBURY, 7299

22 March 2019

57680

MOSSELBAAI MUNISIPALITEIT

**PUBLIEKE KENNISGEWING VIR INSPEKSIE VAN
DIE AANVULLENDE WAARDASIELYS EN
INDIEN VAN BESWARE**

Kennis word hiermee gegee in terme van Artikel 49(1)(a)(i) saamgelees met Artikel 78(2) van die Plaaslike Regering: Munisipale Eiendomsbelasting Wet, 2004 (Wet Nr 6 van 2004), hierin verwys na as die "Wet", dat die Aanvullende Waardasielys vir die boekjare 2018/2019 ter insae lê vir publieke inspeksie by: Mosselbaai Munisipale kantoor, 4de Vloer, Waardasie Afdeling, Montagu Plek Gebou, Montagustraat, Mosselbaai, vanaf 1 April tot 30 April 2019.

'n Uitnodiging word hierby gerig, in terme van Artikel 49(1)(a)(ii) saamgelees met Artikel 78(2) in die Wet, dat enige eienaar van eiendom of enige ander persoon wat dit nodig ag, 'n beswaar by die munisipale bestuurder kan indien vir enige aangeleentheid vervat of weggelaat in die waardasierol binne bogenoemde tydperk.

U aandag word spesifiek daarop gevestig dat in terme van Artikel 50(2) van die Wet 'n beswaar teen 'n spesifieke individuele eiendom ingedien moet word, en nie teen die waardasierol in sy geheel nie.

Die amptelike vorm om 'n beswaar in te dien is beskikbaar by die volgende adres: 4de Vloer, Waardasie Afdeling, Montagu Plek Gebou, Montagustraat, Mosselbaai of vanaf die webtuiste www.mosselbay.gov.za.

Die voltooidde vorms moet teruggestuur word aan die volgende adres: Mosselbaai Munisipaliteit, Waardasie Afdeling, Posbus 25/Privaatsak X29, Mosselbaai, 6500. Besware kan ook elektronies ingedien word by admin@mosselbay.gov.za. Die sluitingsdatum vir die indiening van enige beswaar is Dinsdag, 30 April 2019.

Die waardasierol is ook beskikbaar op die munisipale webblad www.mosselbay.gov.za.

Navrae kan telefonies gerig word by Me. A Geduld 044 606 5122

ADV THYS GILIOME, MUNISIPALE BESTUURDER

22 Maart 2019

57677

SWARTLAND MUNISIPALITEIT

KENNISGEWING 69/2018/2019**VOORGESTELDE OPHEFFING VAN BEPERKENDE
TITELVOORWAARDES ERF 465, YZERFONTEIN**

Kennis geskied hiermee dat die Gemagtigde Beampte, Alwyn Malherbe Zaayman in terme van Artikel 79(1) van die Swartland Munisipaliteit se Verordening op Munisipale Grondgebruikbeplanning (PG 7741 van 3 Maart 2017) wysig die voorwaarde E6(b) van toepassing op Erf 465, Yzerfontein soos vervat in Transportakte T55296 van 2017 as volg:

"E6(b) no building or structure or any portion thereof except boundary walls and fences, shall except with the consent of the Administrator, be erected nearer than 3 metres of the rear boundary common to any adjoining erf, provided that it is with the consent of the local authority."

JJ SCHOLTZ, MUNISIPALE BESTUURDER, Munisipale Kantore,
Privaatsak X52, MALMESBURY, 7299

22 Maart 2019

57680

MATZIKAMA MUNICIPALITY

NOTICE

**PROPOSED AMENDMENT TO THE SPATIAL DEVELOPMENT FRAMEWORK FOR
MATZIKAMA MUNICIPALITY, 2019/2020**

Notice is hereby given in terms of Sections 28(3) and 29 of the Local Government: Municipal Systems Act, 2000 (No. 32 of 2000) and Section 3(2)(a) of the Matzikama Municipality: Land Use Planning By-Law, 2015 that it is the intention of the Municipality to amend the Matzikama Municipality's Spatial Development Framework, 2014 (SDF, 2014). The document is open for public comment for the period of **21 March 2019 until 21 May 2019**.

A Spatial development framework spatially indicates the long term growth and development path of a municipality and is one of the core components of a municipal integrated development plan (IDP) which gives physical effect to the vision, goals and objectives therein.

Please take note that the proposed amendments to the SDF, 2014 will be presented to the public during the public meetings with regards to the IDP.

Any person who cannot write is invited to visit the office of the Municipality during normal office hours where Mr Smit will assist such person to transcribe his/her objections/comments.

Written comments, if any, should be directed to the Municipal Manager.

Any enquiries should be directed to Mnr Briaan Smit: 027 201 3481 or 027 201 3340.

Notice: K15/2019

DP LUBBE, MUNICIPAL MANAGER, Municipal Offices, PO Box 98, VREDENDAL, 8160

22 March 2019

57679

MATZIKAMA MUNISIPALITEIT

KENNISGEWING

**VOORGESTELDE WYSIGING AAN DIE RUIMTELIKE ONTWIKKELINGSRAAMWERK VIR
MATZIKAMA MUNISIPALITEIT, 2019/2020**

Hiermee word in terme van Artikels 28(3) en 29 van die Wet op Munisipale Stelsels, 2000 (Nr 32 van 2000) en Artikel 3(2)(a) van die "Matzikama Municipality: Land Use Planning By-Law, 2015" kennis gegee dat die Munisipaliteit van voorneme is om die Matzikama Munisipaliteit se Ruimtelike Ontwikkelingsraamwerk, 2014 (ROR, 2014), te wysig. Die dokument is vir kommentaar vir die periode **21 Maart 2019 tot 21 Mei 2019**, ter insae.

'n Ruimtelike ontwikkelingsraamwerk dui ruimtelik die langtermyn groei en ontwikkelingsroete van 'n munisipaliteit aan en is 'n kern komponent wat ook visueel op kaarte die visie, doelwitte en doelstellings in die munisipale geïntegreerde ontwikkelingsraamwerk (GOP), aandui.

Neem asseblief kennis dat die voorgestelde wysigings aan die ROR, 2014 saam met die publieke vergaderings ten opsigte van die GOP aan die publiek, voorgelê sal word.

Enige persoon wat nie kan skryf nie kan gedurende kantoorure bogemelde kantoor besoek waar mnr Smit sodanige persoon sal help om sy/haar versoë/kommentaar te skryf.

Skriftelike kommentaar, indien enige, moet gerig word aan die Munisipale Bestuurder.

Enige navrae kan gerig word aan mnr Briaan Smit 027 201 3481 of 027 201 3340.

Kennisgewing: K15/2019

DP LUBBE, MUNISIPALE BESTUURDER, Munisipale Kantore, Posbus 98, VREDENDAL, 8160

22 Maart 2019

57679

UMASIPALA WASEMATZIKAMA

ISAZISO

**UHLAZIYO OLUCETYWAYO LOMGAQO-SIKHOKELO WOKUNATYISWA KOKUSETYENZISWA
KOMHLABA WOMASIPALA WASEMATZIKAMA, 2019/2020**

Esi sisaziso esimalunga nenjongo kaMasipala yokuhlaziya uMgaqo-sikhokelo ka-2014 wokuNatyiswa kokuSetyenziswa koMhlaba woMasipala waseMatzikama (iSDF, 2014) nokwenziwa ngokweSiqendu sama-28(3) nesama-29 soMthetho woRhulumente beNdawo: uMthetho weeNkqubo zikaMasipala (wama-32 ka-2000) kunye nesiQendu sesi-3(2)(a) soMasipala waseMatzikama: uMthetho kaMasipala ka-2015 wokuCwangciselwa kokuSetyenziswa koMhlaba. Olu xwebhu luvulelekile ukuba uluntu lube nokulufunda luhlomle ngalo kwithuba elisukela **ngowe-21 kweyoKwindla (kuMatshi) 2019 ukuya kowe-21 kwekaCanzibe (kuMeyi) 2019**.

Umgqaqo-sikhokelo wokunatyiswa kokusetyenziswa komhlaba kamasipala ubonisa uhlumo nophuhliso lukamasipala lwexesha elide yaye uyenze yezona zinto zibalulekileyo kwisiCwangciso sikamasipala soPhuhliso oluNdindeneyo (i-IDP), nesithi sibonise iindlela ezicacileyo zokuba uza kuphunyezwa njani umbono, iinjongo zethuba elide nezethutyana ezilapho kuso.

Sicela niqaphele ukuba olu hlaziyo lweSDF, 2014 luza kuxoxwa esidlalaleni ngethuba leentlanganiso ezinxulumene neIDP eziya kuthi zibanjwe noluntu.

Kucelwa ukuba bonke abantu abangakwaziyo ukubhala batyelele iofisi kaMasipala ngethuba lomsebenzi, apho baya kuthi bancedwe ngu Mnu. Smit oya kuphulaphula oko umntu akuthethayo, aze akubhale phantsi.

Naziphi izimvo ezibhaliweyo mazithunyelwe kuMlawuli kaMasipala.

Malunga nemibuzo, ungaqhagamshelana noMnu. Briaan Smit, kwa: 027 201 3481 okanye kwa-027 201 3340.

Notice: K15/2019

DP LUBBE, MUNICIPAL MANAGER, Municipal Offices, PO Box 98, VREDENDAL, 8160

22 kweyoKwindla 2019

57679

LE ROUX VAN DER MERWE INCORPORATED
BUSINESS NOTICE

BUSINESS NOTICES

ALIENATION, SALES, CHANGES OF PARTNERSHIP, NAME, ADDRESSES, etc.

Notice is hereby given in terms of section 34 (1) of the Insolvency Act, No. 24 of 1936, to interested parties and creditors of the intention of alienation of businesses and/or goodwill, goods or property forming part of businesses, after a period of 30 days from the last publication of the relevant advertisements, and of actions, circumstances or conditions pertaining to business or parties or debtors, as mentioned therein.

- (1) Township or district:
MOSSEL BAY, WESTERN CAPE

- (2) Seller:
MOSSEL BAY FORD CC
REGISTRATION NUMBER: CK2007/235538/23

- (3) Business or trade, kind, name and/or style, and the address at which carried on:
MOSSEL BAY FORD
Distributor of new and used Motor vehicles and Spare parts
Corner of Louis Fourie and Via Apie, Voorbaai, Mossel Bay, 6500

- (4) Purpose, and intent (alienation, sale, abandonment, change or dissolution of partnership, removal or change or address, change of name, cancellation of sale, etc.); conditions, and date or period of time if other than 30 days:
AGREEMENT OF SALE, EFFECTIVE DATE: 1 MAY 2019

- (5) Purchaser, new proprietor and/or owner or partner, or contracting party:
MONVICKRIF (PTY) LTD
REGISTRATION NUMBER: 1997/009287/07

- (6) Business and address, if other than under (3); notes, comment:
MOSSEL BAY FORD
Corner of Louis Fourie and Via Apie, Voorbaai, Mossel Bay, 6500

- (7) Advertiser and/or agent, address and date
LE ROUX VAN DER MERWE INC.
P.O. BOX 1893, MOSSEL BAY, 6500
22 MARCH 2019

DEPARTMENT OF ENVIRONMENTAL AFFAIRS AND DEVELOPMENT PLANNING

LAND DEVELOPMENT APPLICATION: FARM 1101, STELLENBOSCH

Notice is hereby given that the Competent Authority, on 9 January 2019, **APPROVED** a land development application for light industrial and warehouse development on Farm 1101, Stellenbosch, in terms of Section 54(1) of the Land Use Planning Act, 2014 (Act 3 of 2014) (LUPA) read with Regulation 21(3)(b) of the Western Cape Land Use Planning Regulations, 2015.

In terms of Section 56 of LUPA and Regulation 23 of the Western Cape Land Use Planning Regulations, 2015 any person whose rights are affected by the decision may appeal the above decision to the Provincial Minister, Western Cape Ministry of Environmental Affairs and Development Planning within 21 days of the date of publication of the decision.

The prescribed Appeal Form is obtainable from the Appeal Authority at Tel. (021) 483 3721 or E-mail Jaap.DeVilliers@westerncape.gov. The Appeal Form and supporting documentation must be submitted to the address listed below:

By post: Western Cape Ministry of Local Government,
Environmental Affairs and Development Planning
Private Bag X9186
CAPE TOWN
8000

By facsimile: (021) 483 4174; or

By hand: Mr Jaap de Villiers (Tel: 021 483 3721)
Room 809, 8th Floor Utilitas Building, 1 Dorp Street,
Cape Town, 8001

Failure to comply with the above requirements and provisions within Section 56 of LUPA and Regulation 23 will result in the appeal being ruled invalid.

File reference:15/3/2/11/B4/45/FARM 1101, Stellenbosch

22 March 2019

57681

DEPARTEMENT VAN OMGEWINGSAKE EN ONTWIKKELINGSBEPLANNING

GRONDONTWIKKELINGSAANSOEK: VAN DIE PLAAS 1101, STELLENBOSCH

Kennis geskied hiermee dat die Bevoegde Gesag die grondontwikkelingsaansoek vir ligte industriële doeleindes en 'n stoorplek ontwikkeling, **GOEDGEKEUR** het op 9 Januarie 2019 op die Plaas 1101, Stellenbosch, ingevolge Artikel 54 (1) van die Wes-Kaapse Wet op Grondgebruikbeplanning, 2014 (Wet 3 van 2014) tesame gelees met Regulasie 21(3)(b) van die Wes-Kaapse Regulasies op Grondgebruikbeplanning, 2015.

Ingevolge Artikel 56 van die Wes-Kaapse Wet op Grondgebruikbeplanning, 2014 (Wet 3 van 2014) en Regulasie 23 van die Wes-Kaapse Regulasies op Grondgebruikbeplanning, 2015 kan enige persoon wie se regte deur die besluit geraak word en wat kommentaar op die aansoek ingedien het, binne 21 dae na datum van publikasie van die besluit, appèl aanteken by die Provinsiale Minister, Wes-Kaapse Ministerie van Omgewingsake en Ontwikkelingsbeplanning.

Die voorgeskrewe Appèlvorm is verkrygbaar by die Appèl-owerheid by Tel. (021) 483 3721 of e-pos Jaap.DeVilliers@westerncape.gov. Die Appèlvorm en die ondersteunende dokumentasie moet by die onderstaande adres ingedien word:

Per pos: Wes-Kaapse Ministerie van Plaaslike Regering,
Omgewingsake en Ontwikkelingsbeplanning
Privaatsak X9186
KAAPSTAD
8000

Per faks: (021) 483 4174; of

Per hand: Mnr. Jaap de Villiers (Tel: 021 483 3721)
Kamer 809, 8ste Vloer Utilitas Gebou, Dorpstraat 1,
Kaapstad, 8001

Versuim om te voldoen aan bogenoemde vereistes en bepalinge ingevolge Artikel 56 van die Wet op Grondgebruikbeplanning en Regulasie 23 sal daartoe lei dat die appèl ongeldig geag word.

Lêer verwysing: 15/3/2/11/B4/45/Plaas 1101, Stellenbosch

22 Maart 2019

57681

ISEBE LEMICIMBI YOKUSINGQONGILEYO NOCWANGCISO LOPHUHLISO

ISICELO SOPHUHLISO LOMHLABA: IPOJEKTI YOKUHLAZIYO YAMANDLA OMOYA: E-MOORREESBURG

Esi sisaziso esichaza ukuba uGunyaziwe oseMthethweni, ngomhla we-19 kweyo Msintsi (Septemba) 2018, **WASIVUMA**, isicelo sophuhliso leProjekti yohlaziyo lwezamandla omoya se Zahlulo 20,21 & 23 kunye ne Ntsalela yeZahlulo 8,11,12,13,17 & 18 seFama Zwartfontein engu Nomb. 414, iZahlulo 1 & 7 kunye neNtsalela yaSahlulo 3 seFama Zwartfontein Nomb. 416 iZahlulo 2 & 6 seFama Hartebeesfontein Nomb. 412, Fama Nomb. 1066, isahlulo 1 se Fama Tontelberg Nomb. 424 kunye neSahlulo 9 seFama Biesjesfontein Nomb. 413 senginqi yase Mooreesburg ngokweCandelo 54(1) loMthetho woCwangciso loSetyenziso loMhlaba, 2014 (uMthetho 3 ka-2014) ofundwa noMgaqo 21(3)(b) ophuma kwiMigaqo yoCwangciso loSetyenziso loMhlaba, 2015.

NgokweCandelo 56 loMthetho woCwangciso loSetyenziso loMhlaba noMgaqo 23, nabanina omalungelo akhe achatshazelwayo sesisigqibo nowayezingenisile izimva zakhe eziphatelene nesi sicelo ngaphambili, angafaka isibheno kuMphathiswa wePhondo leNtshona Koloni, kwiofisi yeMicimbi yokuSingqongileyo noPhuhliso loCwangciso zingaphelanga iintsuku ezingama-21 emva kokuba sipapashiwe esi saziso.

Ifomu elungiselelwe izibheno ifumaneka kuGunyaziwe wezibheno kule nombolo: (021) 483 3721 okanye kule imeyili: Jaap.DeVilliers@westerncape.gov. Ifomu yezibheno kunye nezinye iimpepha namaxwebhu axhasa uluvo lwakho maziye kwezi dilesi zingezantsi:

Ngeposi: Western Cape Ministry of Local Government,
Environmental Affairs and Development Planning
Private Bag X9186
CAPE TOWN
8000

Ngefeksi: (021) 483 4174; okanye

Ngesandla: Mnu Jaap de Villiers (Umnxeba: 021 483 3721)
Room 809, 8th Floor Utilitas Building, 1 Dorp Street,
eKapa

Xa yonke le miqathango ingentla namalungiselelo acatshulweyo ecandelo 56 loMthetho woCwangciso loSetyenziso loMhlaba noMgaqo 23 itha ayathotyelwa, isibheno sakho siya kukhatywa ngokupheleleyo kuba siya kube asigqibelelanga.

File reference:15/3/2/B4/45/FARM 1101, Stellenbosch

22 kweyoKwindla 2019

57681

DEPARTMENT OF ENVIRONMENTAL AFFAIRS AND DEVELOPMENT PLANNING

LAND DEVELOPMENT APPLICATION: FARM DOORNKRAAL, NO 832, MALMESBURY

Notice is hereby given that the Competent Authority, on 20 February 2019, **APPROVED** a land development application for the establishment and operation of a sand mine on Farm Doornkraal No 832, Malmesbury, in terms of Section 54(1) of the Land Use Planning Act, 2014 (Act 3 of 2014) (LUPA) read with Regulation 21(3)(b) of the Western Cape Land Use Planning Regulations, 2015.

In terms of Section 56 of LUPA and Regulation 23 of the Western Cape Land Use Planning Regulations, 2015 any person whose rights are affected by the decision may appeal the above decision to the Provincial Minister, Western Cape Ministry of Environmental Affairs and Development Planning within 21 days of the date of publication of the decision.

The prescribed Appeal Form is obtainable from the Appeal Authority at Tel. (021) 483 3721 or E-mail Jaap.DeVilliers@westerncape.gov. The Appeal Form and supporting documentation must be submitted to the address listed below:

By post: Western Cape Ministry of Local Government,
Environmental Affairs and Development Planning
Private Bag X9186
CAPE TOWN
8000

By facsimile: (021) 483 4174; or

By hand: Mr Jaap de Villiers (Tel: 021 483 3721)
Room 809, 8th Floor Utilitas Building, 1 Dorp Street,
Cape Town, 8001

Failure to comply with the above requirements and provisions within Section 56 of LUPA and Regulation 23 will result in the appeal being ruled invalid.

File reference:15/3/2/11/F5/16/FARM 832, Malmesbury

22 March 2019

57682

DEPARTEMENT VAN OMGEWINGSAKE EN ONTWIKKELINGSBEPLANNING

GRONDONTWIKKELINGSAANSOEK: VAN DIE PLAAS DOORNKRAAL, NR 832, MALMESBURY

Kennis geskied hiermee dat die Bevoegde Gesag die grondontwikkelingsaansoek vir ontwikkeling en bedryf van 'n sand myn, **GOEDGEKEUR** het op 21 Februarie 2019 op die Plaas Doornkraal Nr 832, Malmesbury, ingevolge Artikel 54 (1) van die Wes-Kaapse Wet op Grondgebruikbeplanning, 2014 (Wet 3 van 2014) tesame gelees met Regulasie 21(3)(b) van die Wes-Kaapse Regulasies op Grondgebruikbeplanning, 2015.

Ingevolge Artikel 56 van die Wes-Kaapse Wet op Grondgebruikbeplanning, 2014 (Wet 3 van 2014) en Regulasie 23 van die Wes-Kaapse Regulasies op Grondgebruikbeplanning, 2015 kan enige persoon wie se regte deur die besluit geraak word en wat kommentaar op die aansoek ingedien het, binne 21 dae na datum van publikasie van die besluit, appèl aanteken by die Provinsiale Minister, Wes-Kaapse Ministerie van Omgewingsake en Ontwikkelingsbeplanning.

Die voorgeskrewe Appèlvorm is verkrygbaar by die Appèl-owerheid by Tel. (021) 483 3721 of e-pos Jaap.DeVilliers@westerncape.gov. Die Appèlvorm en die ondersteunende dokumentasie moet by die onderstaande adres ingedien word:

Per pos: Wes-Kaapse Ministerie van Plaaslike Regering,
Omgewingsake en Ontwikkelingsbeplanning
Privaatsak X9186
KAAPSTAD
8000

Per faks: (021) 483 4174; of

Per hand: Mnr. Jaap de Villiers (Tel: 021 483 3721)
Kamer 809, 8ste Vloer Utilitas Gebou, Dorpstraat 1,
Kaaipstad, 8001

Versuim om te voldoen aan bogenoemde vereistes en bepalinge ingevolge Artikel 56 van die Wet op Grondgebruikbeplanning en Regulasie 23 sal daartoe lei dat die appèl ongeldig geag word.

Lêer verwysing: 15/3/2/11/F5/16/PLAAS 832, Malmesbury

22 Maart 2019

57682

ISEBE LEMICIMBI YOKUSINGQONGILEYO NOCWANGCISO LOPHUHLISO

ISICELO SOPHUHLISO LOMHLABA: IFAMA NOMBOLO 832, DOORNKRAAL, E MALMESBURY

Esi sisaziso esichaza ukuba uGunyaziwe oseMthethweni, ngomhla we-19 kweyo Mdumba (Februwari) 2019, **WASIVUMA**, isicelo sophuhliso lomhlaba ukuze kuvunyelwe ulwakhiwo nokusebenzisa/noqhubeka kwendawo ibe ngumgodi we santi kwiFama Nomb. 832, Doornkraal, ngokweCandelo 54(1) loMthetho woCwangciso loSetyenziso loMhlaba, 2014 (uMthetho 3 ka-2014) ofundwa kunye noMgaqo 21(3)(b) kwiMigaqo yoCwangciso loSetyenziso loMhlaba, yeNtshona Koloni, 2015.

NgokweCandelo 56 loMthetho woCwangciso loSetyenziso loMhlaba noMgaqo 23, nabanina omalungelo akhe achatshazelwayo sesisigqibo nowayezingenisile izimva zakhe eziphathelele nesi sicelo ngaphambili, angafaka isibheno kuMphathiswa wePhondo leNtshona Koloni, kwifosi yeMicimbi yokuSingqongileyo noPhuhliso loCwangciso zingaphelanga iintsuku ezingama-21 emva kokuba sipapashiwe esi saziso.

Ifomu elungiselelwe izibheno ifumaneka kuGunyaziwe wezibheno kule nombolo: (021) 483 3721 okanye kule imeyili: Jaap.DeVilliers@westerncape.gov. Ifomu yezibheno kunye nezinye iimpepha namaxwebhu axhasa uluvo lwakho maziye kwezi dilesi zingezantsi:

Ngeposi: Western Cape Ministry of Local Government,
Environmental Affairs and Development Planning
Private Bag X9186
CAPE TOWN
8000

Ngefeksi: (021) 483 4174; okanye

Ngesandla: Mnu Jaap de Villiers (Umnxeba: 021 483 3721)
Room 809, 8th Floor Utilitas Building, 1 Dorp Street,
eKapa

Room 809, 8th Floor Utilitas Building, 1 Dorp Street, eKapa

Xa yonke le miqathango ingentla namalungiselelo acatshulweyo ecandelo 56 loMthetho woCwangciso loSetyenziso loMhlaba noMgaqo 23 itha ayathotyelwa, isibheno sakho siya kukhatywa ngokupheleleyo kuba siya kube asigqibelelanga.

File reference:15/3/2/11/F5/16/FARM 832, Malmesbury

22 kweyoKwindla 2019

57682

DEPARTMENT OF ENVIRONMENTAL AFFAIRS AND DEVELOPMENT PLANNING

**LAND DEVELOPMENT APPLICATION: PORTIONS 1 AND 2 OF FARM NO. 1766, VENDOME, PAARL,
DRAKENSTEIN MUNICIPALITY**

Notice is hereby given that the Competent Authority, on 28 January 2019, **APPROVED**, a land development application on Portions 1 and 2 of Farm No. 1766, Vendome, Paarl Drakenstein Municipality, in terms of Section 54 of the Land Use Planning Act, 2014 (Act 3 of 2014) (LUPA) read with Regulasie 21(3)(b) of the Land Use Planning Regulations, 2015, in order to permit a Residential development, a Mixed use/Medical precinct and erven for agricultural purposes.

In terms of Section 56 of LUPA and Regulasie 23, any person whose rights are affected by the decision may appeal the above decision to the Provincial Minister, Western Cape Ministry of Environmental Affairs and Development Planning within 21 days of the date of publication of the decision.

The prescribed Appeal Form is obtainable from the Appeal Authority at Tel. (021) 483 3721 or E-mail Jaap.DeVilliers@westerncape.gov. The Appeal Form and supporting documentation must be submitted to the address listed below:

By post: Western Cape Ministry of Local Government,
Environmental Affairs and Development Planning
Private Bag X9186
CAPE TOWN
8000

By facsimile: (021) 483 4174; or

By hand: Mr Jaap de Villiers (Tel: 021 483 3721)
Room 809, 8th Floor Utilitas Building, 1 Dorp Street,
Cape Town, 8001

Failure to comply with the above requirements and provisions within Section 56 of LUPA and Regulasie 23 will result in the appeal being ruled invalid.

22 March 2019

57683

DEPARTEMENT VAN OMGEWINGSAKE EN ONTWIKKELINGSBEPLANNING

**GRONDONTWIKKELINGSAANSOEK: GEDEELTES 1 EN 2 VAN PLAAS NR 1766, VENDOME, PAARL,
DRAKENSTEIN MUNISIPALITEIT**

Kennis geskied hiermee dat die Bevoegde Gesag, op 28 January 2019, 'n grondontwikkelingsaansoek **GOEDGEKEUR** het op Gedeeltes 1 en 2 van Plaas Nr. 1766, Vendome, Paarl, Drakenstein Munisipaliteit, ingevolge Artikel 54 van die Wes-Kaapse Wet op Grondgebruikbeplanning, 2014 (Wet 3 van 2014) saamgelees met Regulasie 21(3)(b) van die Wes-Kaapse Regulasies op Grondgebruikbeplanning, 2015, ten einde 'n Residensiële ontwikkeling, 'n Gemengde gebruik/Mediese distrik en erwe vir landbou doeleindes toe te laat.

Ingevolge Artikel 56 van die Wes-Kaapse Wet op Grondgebruikbeplanning, 2014 (Wet 3 van 2014) en Regulasie 23, kan enige persoon wie se regte deur die besluit geraak word, binne 21 dae na datum van publikasie van die besluit, appèl aanteken by die Provinsiale Minister, Wes-Kaapse Ministerie van Omgewingsake en Ontwikkelingsbeplanning.

Die voorgeskrewe Appèlvorm is verkrygbaar by die Appèl-owerheid by Tel. (021) 483 3721 of e-pos Jaap.DeVilliers@westerncape.gov. Die Appèlvorm en die ondersteunende dokumentasie moet by die onderstaande adres ingedien word:

Per pos: Wes-Kaapse Ministerie van Plaaslike Regering,
Omgewingsake en Ontwikkelingsbeplanning
Privaatsak X9186
KAAPSTAD
8000

Per faks: (021) 483 4174; of

Per hand: Mnr. Jaap de Villiers (Tel: 021 483 3721)
Kamer 809, 8ste Vloer Utilitas Gebou, Dorpstraat 1,
Kaapstad, 8001

Versuim om te voldoen aan bogenoemde vereistes en bepalinge ingevolge Artikel 56 van die Wes-Kaapse Wet op Grondgebruikbeplanning, 2014 (Wet 3 van 2014) en Regulasie 23, sal daartoe lei dat die appèl ongeldig geag word.

22 Maart 2019

57683

ISEBE LEMICIMBI YOKUSINGQONGILEYO NOCWANGCISO LOPHUHLISO

ISICELO SOPHUHLISO LOMHLABA: IZAHLULO 1 KUNYE NO 2 SEFAMA NOMBOLO 1766, VENDOME, PAARL, KUMASIPALA WASE DRAKENSTEIN

Esi sisaziso esichaza ukuba uGunyaziwe oseMthethweni, ngomhla we-28 kweyo Mqungu, (Januwari) 2019, **WASIVUMA**, isicelo sophuhliso seza Hlulo 1 kunye no 2 seFama Nombolo 1766, Vendome, Paarl, kuMasipala wase Drakenstein, ngokweCandelo 54(1) loMthetho woCwangciso loSetyenziso loMhlaba, 2014 (uMthetho 3 ka-2014) ofundwa noMgaqo 21(3)(b) ophuma kwiMigaqo yoCwangciso loSetyenziso loMhlaba, 2015, ukuze kuvunyelwe uphuhliso lwendawo zokuhlala ezixubileyo/nendawo yezokhuselo neyokukuxilongela kunye nezahlulo zendawo ezinokusetyenziselwa indawo yokulima.

NgokweCandelo 56 loMthetho woCwangciso loSetyenziso loMhlaba noMgaqo 23, okwiMigaqo yoCwangciso loSetyenziso-MHlabha yeNtshona Koloni, 2015, nabanina omalungelo akhe achatshazelwayo seSisigqibo nowayezingenisile izimvo zakhe eziphatelene nesi sicelo ngaphambili, angafaka isibheni kuMphathiswa wePhondo leNtshona Koloni, kwiofisi yeMicimbi yokuSingqongileyo noPhuhliso loCwangciso zingaphelanga iintsuku ezingama-21 emva kokuba sipapashiwe esi saziso.

Ifomu elungiselelwe izibheni ifumaneka kuGunyaziwe wezibheni kule nombolo: (021) 483 3721 okanye kule imeyili: Jaap.DeVilliers@westerncape.gov. Ifomu yezibheni kunye nezinye iimpepha namaxwebhu axhasa uluvo lwakho maziye kwezi dilesi zingezantsi:

Ngeposi: Western Cape Ministry of Local Government,
Environmental Affairs and Development Planning
Private Bag X9186
CAPE TOWN
8000

Ngefeksi: (021) 483 4174; okanye

Ngesandla: Mnu Jaap de Villiers (Umnxeba: 021 483 3721)
Room 809, 8th Floor Utilitas Building, 1 Dorp Street,
eKapa

Xa yonke le miqathango ingentla namalungiselelo acatshulweyo ecandelo 56 loMthetho woCwangciso loSetyenziso loMhlaba noMgaqo 23 itha ayathotyelwa, isibheni sakho siya kukhatywa ngokupheleleyo kuba siya kube asigqibelelanga.

22 kweyoKwindla 2019

57683

DEPARTMENT OF ENVIRONMENTAL AFFAIRS AND DEVELOPMENT PLANNING

LAND DEVELOPMENT APPLICATION: PORTION 1 OF THE FARM VAALVLEI NO. 401, DIVISION VANRHYNSDORP, CEDERBERG MUNICIPALITY

Notice is hereby given that the Competent Authority, on 17 October 2018, **APPROVED**, a land development application on Portion 1 of the Farm Vaalvlei No. 401, Division Vanrhynsdorp, Cederberg Municipality, in terms of Section 54 of the Land Use Planning Act, 2014 (Act 3 of 2014) (LUPA) read with Regulasie 21(3)(b) of the Land Use Planning Regulations, 2015, in order to permit the establishment and operation of a quarry, subject thereto that neighbouring landowners be notified two days in advance before a scheduled blast takes place.

In terms of Section 56 of LUPA and Regulasie 23, any person whose rights are affected by the decision may appeal the above decision to the Provincial Minister, Western Cape Ministry of Environmental Affairs and Development Planning within 21 days of the date of publication of the decision.

The prescribed Appeal Form is obtainable from the Appeal Authority at Tel. (021) 483 3721 or E-mail Jaap.DeVilliers@westerncape.gov. The Appeal Form and supporting documentation must be submitted to the address listed below:

By post: Western Cape Ministry of Local Government,
Environmental Affairs and Development Planning
Private Bag X9186
CAPE TOWN
8000

By facsimile: (021) 483 4174; or

By hand: Mr Jaap de Villiers (Tel: 021 483 3721)
Room 809, 8th Floor Utilitas Building, 1 Dorp Street,
Cape Town, 8001

Failure to comply with the above requirements and provisions within Section 56 of LUPA and Regulasie 23 will result in the appeal being ruled invalid.

22 March 2019

57684

DEPARTEMENT VAN OMGEWINGSACE EN ONTWIKKELINGSBEPLANNING

GRONDONTWIKKELINGSAANSOEK: GEDEELTE 1 VAN DIE PLAAS VAALVLEI NR 401, AFDELING VANRHYNSDORP, CEDERBURG MUNISIPALITEIT

Kennis geskied hiermee dat die Bevoegde Gesag, op 17 Oktober 2018, 'n grondontwikkelingsaansoek **GOEDGEKEUR** het op Gedeelte 1 van die plaas Vaalvlei Nr. 401, Afdeling Vanrhynsdorp, Cederberg Munisipaliteit, ingevolge Artikel 54 van die Wes-Kaapse Wet op Grondgebruikbeplanning, 2014 (Wet 3 van 2014) saamgelees met Regulasie 21(3)(b) van die Wes-Kaapse Regulasies op Grondgebruikbeplanning, 2015, ten einde die vestiging en werking van 'n steengroef toe te laat, onderworpe daaraan dat omliggende grondeienaars twee dae voor die tyd in kennis gestel word voordat 'n geskeduleerde skietwerk plaasvind.

Ingevolge Artikel 56 van die Wes-Kaapse Wet op Grondgebruikbeplanning, 2014 (Wet 3 van 2014) en Regulasie 23, kan enige persoon wie se regte deur die besluit geraak word, binne 21 dae na datum van publikasie van die besluitneming, appèl aanteken by die Provinsiale Minister, Wes-Kaapse Ministerie van Omgewingsake en Ontwikkelingsbeplanning.

Die voorgeskrewe Appèlvorm is verkrygbaar by die Appèl-owerheid by Tel. (021) 483 3721 of e-pos Jaap.DeVilliers@westerncape.gov. Die Appèlvorm en die ondersteunende dokumentasie moet by die onderstaande adres ingedien word:

Per pos: Wes-Kaapse Ministerie van Plaaslike Regering,
Omgewingsake en Ontwikkelingsbeplanning
Privaatsak X9186
KAAPSTAD
8000

Per faks: (021) 483 4174; of

Per hand: Mnr. Jaap de Villiers (Tel: 021 483 3721)
Kamer 809, 8ste Vloer Utilitas Gebou, Dorpstraat 1,
Kaaipstad, 8001

Versuim om te voldoen aan bogenoemde vereistes en bepalinge ingevolge Artikel 56 van die Wes-Kaapse Wet op Grondgebruikbeplanning, 2014 (Wet 3 van 2014) en Regulasie 23 sal daartoe lei dat die appèl ongeldig geag word.

22 Maart 2019

57684

ISEBE LEMICIMBI YOKUSINGQONGILEYO NOCWANGCISO LOPHUHLISO

ISICELO SOPHUHLISO LOMHLABA: ISAHLULO SEFAMA YAE VAALVLEI NOMB. 401, KUMMANDLA WASE VANRHYNSDORP, KUMASIPALA, ECEDERBERG

Esi sisaziso esichaza ukuba uGunyaziwe oseMthethweni, ngomhla we-17 kweye Dwarha (Okthobha) 2018, **WASIVUMA** isicelo sophuhliso lweSahlulo 1 seFama Vaalvlei enguNombolo 401, ese Vanrhynsdorp, kuMaspala wase Cederberg, ngokweCandelo 54 loMthetho woCwangciso loSetyenziso loMhlaba, 2014 (uMthetho 3 ka-2014) ofundwa noMgaqo 21(3)(b) ophuma kwiMigaqo yoCwangciso loSetyenziso loMhlaba, 2015 ukuze kuvunyelwe ukusekwa kunye nokusebenzela komgodi kwekota (ikwari), ngokuxhomeke kubamelwane nabanini beziza baxelelwe/baziswe ngeentsuku ezimbini phambi kokuba oko kubhaliweyo ngogqabhuko nokuqhuma okuhleliweyo.

NgokweCandelo 56 loMthetho woCwangciso loSetyenziso loMhlaba noMgaqo 23, nabanina omalungelo akhe achatshazelwayo sesisigqibo nowayezingenisile izimva zakhe eziphatelene nesi sicelo ngaphambili, angafaka isibheno kuMphathiswa wePhondo leNtshona Koloni, kwifisi yeMicimbi yokuSingqongileyo noPhuhliso loCwangciso zingaphelanga iintsuku ezingama-21 emva kokuba sipapashiwe esi saziso.

Ifomu elungiselelwe izibheno ifumaneka kuGunyaziwe wezibheno kule nombolo: (021) 483 3721 okanye kule imeyili: Jaap.DeVilliers@westerncape.gov. Ifomu yezibheno kunye nezinye iimpepha namaxwebhu axhasa uluvo lwakho maziye kwezi dilesi zingezantsi:

Ngeposi: Western Cape Ministry of Local Government,
Environmental Affairs and Development Planning
Private Bag X9186
CAPE TOWN
8000

Ngefeksi: (021) 483 4174; okanye

Ngesandla: Mnu Jaap de Villiers (Umnxeba: 021 483 3721)
Room 809, 8th Floor Utilitas Building, 1 Dorp Street,
eKapa

Ukungathobeli ezi mfuno zibhaliweyo ngentla kunye nemigqaliselo yemfuno nezidingo acatshulweyo kwi candelo 56 loMthetho woCwangciso loSetyenziso loMhlaba noMgaqo 23 kuyakubangela ibheno silawulwe ngokungavumelekanga okanye.

22 kweyoKwindla 2019

57684

DEPARTMENT OF ENVIRONMENTAL AFFAIRS AND DEVELOPMENT PLANNING

LAND DEVELOPMENT APPLICATION: FARM 908, CALEDON

Notice is hereby given that the Competent Authority, on 22 January 2019, **APPROVED** a land development application for a Helipad on Farm 908, Caledon, in terms of Section 54(1) of the Land Use Planning Act, 2014 (Act 3 of 2014) (LUPA) read with Regulation 21(3)(b) of the Western Cape Land Use Planning Regulations, 2015.

In terms of Section 56 of LUPA and Regulation 23 of the Western Cape Land Use Planning Regulations, 2015 any person whose rights are affected by the decision may appeal the above decision to the Provincial Minister, Western Cape Ministry of Environmental Affairs and Development Planning within 21 days of the date of publication of the decision.

The prescribed Appeal Form is obtainable from the Appeal Authority at Tel. (021) 483 3721 or E-mail Jaap.DeVilliers@westerncape.gov. The Appeal Form and supporting documentation must be submitted to the address listed below:

By post: Western Cape Ministry of Local Government,
Environmental Affairs and Development Planning
Private Bag X9186
CAPE TOWN
8000

By facsimile: (021) 483 4174; or

By hand: Mr Jaap de Villiers (Tel: 021 483 3721)
Room 809, 8th Floor Utilitas Building, 1 Dorp Street,
Cape Town, 8001

Failure to comply with the above requirements and provisions within Section 56 of LUPA and Regulation 23 will result in the appeal being ruled invalid.

File reference: 15/3/2/11/E4/5/FARM 908, Caledon

22 March 2019

57685

DEPARTEMENT VAN OMGEWINGSAKE EN ONTWIKKELINGSBEPLANNING

GRONDONTWIKKELINGSAANSOEK: VAN DIE PLAAS 908, CALEDON

Kennis geskied hiermee dat die Bevoegde Gesag die grondontwikkelaarsaansoek vir 'n Helipad, **GOEDGEKEUR** het op 22 Januarie 2019 op die Plaas 908, Caledon, ingevolge Artikel 54 (1) van die Wes-Kaapse Wet op Grondgebruikbeplanning, 2014 (Wet 3 van 2014) tesame gelees met Regulasie 21(3)(b) van die Wes-Kaapse Regulasies op Grondgebruikbeplanning, 2015.

Ingevolge Artikel 56 van die Wes-Kaapse Wet op Grondgebruikbeplanning, 2014 (Wet 3 van 2014) en Regulasie 23 van die Wes-Kaapse Regulasies op Grondgebruikbeplanning, 2015 kan enige persoon wie se regte deur die besluit geraak word en wat kommentaar op die aansoek ingedien het, binne 21 dae na datum van publikasie van die besluit, appèl aanteken by die Provinsiale Minister, Wes-Kaapse Ministerie van Omgewingsake en Ontwikkelingsbeplanning.

Die voorgeskrewe Appèlvorm is verkrygbaar by die Appèl-owerheid by Tel. (021) 483 3721 of e-pos Jaap.DeVilliers@westerncape.gov. Die Appèlvorm en die ondersteunende dokumentasie moet by die onderstaande adres ingedien word:

Per pos: Wes-Kaapse Ministerie van Plaaslike Regering,
Omgewingsake en Ontwikkelingsbeplanning
Privaatsak X9186
KAAPSTAD
8000

Per faks: (021) 483 4174; of

Per hand: Mnr. Jaap de Villiers (Tel: 021 483 3721)
Kamer 809, 8ste Vloer Utilitas Gebou, Dorpstraat 1,
Kaapstad, 8001

Versuim om te voldoen aan bogenoemde vereistes en bepalinge ingevolge Artikel 56 van die Wet op Grondgebruikbeplanning en Regulasie 23 sal daartoe lei dat die appèl ongeldig geag word.

Lêer verwysing: 15/3/2/11/E4/5/FARM 908, Caledon

22 Maart 2019

57685

ISEBE LEMICIMBI YOKUSINGQONGILEYO NOCWANGCISO LOPHUHLISO

ISICELO SOPHUHLISO LOMHLABA: IFAMA 908, CALEDON

Esi sisaziso esichaza ukuba uGunyaziwe oseMthethweni, ngomhla we-22 kweyo Mqungu, (Januari) 2019, **WASIVUMA**, isicelo sophuhliso seHelipadi seFama 908, Caledon, ngokweCandelo 54(1) loMthetho woCwangciso loSetyenziso loMhlaba, 2014 (uMthetho 3 ka-2014) ofundwa noMgaqo 21(3)(b) ophuma kwiMigaqo yoCwangciso loSetyenziso loMhlaba, 2015.

NgokweCandelo 56 loMthetho woCwangciso loSetyenziso loMhlaba noMgaqo 23, okwiMigaqo yoCwangciso loSetyenziso-Mhlaba yeNtshona Koloni, 2015, nabanina omalungelo akhe achatshazelwayo sesisigqibo nowayezingenisile izimvo zakhe eziphatelene nesi sicelo ngaphambili, angafaka isibheno kuMphathiswa wePhondo leNtshona Koloni, kwiofisi yeMicimbi yokuSingqongileyo noPhuhliso loCwangciso zingaphelanga iintsuku ezingama-21 emva kokuba sipapashiwe esi saziso.

Ifomu elungiselelwe izibheno ifumaneka kuGunyaziwe wezibheno kule nombolo: (021) 483 3721 okanye kule imeyili: Jaap.DeVilliers@westerncape.gov. Ifomu yezibheno kunye nezinye iimpepha namaxwebhu axhasa uluvo lwakho maziye kwezi dilesi zingezantsi:

Ngeposi: Western Cape Ministry of Local Government,
Environmental Affairs and Development Planning
Private Bag X9186
CAPE TOWN
8000

Ngefeksi: (021) 483 4174; okanye

Ngesandla: Mnu Jaap de Villiers (Umnxeba: 021 483 3721)
Room 809, 8th Floor Utilitas Building, 1 Dorp Street,
eKapa

Xa yonke le miqathango ingentla namalungiselelo acatshulweyo ecandelo 56 loMthetho woCwangciso loSetyenziso loMhlaba noMgaqo 23 itha ayathotyelwa, isibheno sakho siya kukhatywa ngokupheleleyo kuba siya kube asigqibelelanga.

File reference:15/3/2/11/E4/5/FARM 908, Caledon

22 kweyoKwindla 2019

57685

BEAUFORT WEST MUNICIPALITY

CORRECTION NOTICE**NOTICE NO. 33/2019****REMOVAL OF RESTRICTIVE CONDITIONS: ERF 7427,
34 STANBRIDGE STREET: BEAUFORT WEST**

Notice is hereby given in terms of Section 63 of the By-Law on Municipal Land Use Planning for Beaufort West that the referral to Title Deed T23130/2018 published under Notice 24/2019 in the Provincial Gazette No. 8047 dated 22 February 2019, is hereby corrected to refer to Title Deed T23136/2018.

Ref. No. 12/4/6/3/2; 12/4/1; Erf: 7427 [Beaufort West]

22 March 2019

57691

BEAUFORT-WES MUNISIPALITEIT

REGSTELLINGSKENNISGEWING**KENNISGEWING NR 33/2019****OPHEFFING VAN VOORWAARDES: ERF 7427,
STANBRIDGESTRAAT 34: BEAUFORT-WES**

Kennis geskied hiermee ingevolge Artikel 63 van die Verordening op Munisipale Grondgebruikbeplanning vir Beaufort-Wes Munisipaliteit dat die verwysing na Titelakte T23130/2018 soos gepubliseer per Kennisgewing 24/2019 in Provinsiale Koerant Nr 8047 dateer 22 Februarie 2019, reggestel word deur te verwys na Titelakte T23136/2018.

Verw. Nr 12/4/6/3/2; 12/4/1; Erf: 7427 [Beaufort-Wes]

22 Maart 2019

57691

BREDE VALLEY MUNICIPALITY

**APPLICATION FOR REMOVAL OF RESTRICTIVE
TITLE CONDITIONS, CONSENT USE (ADDITIONAL
DWELLING) AND DEPARTURE, ERF 3620,
43 LYONS STREET WORCESTER****OWNER(S): CV LEICHER AND M VAN GRAAN**

Application was received for the removal of restrictive title conditions and consent use (additional dwelling) and departure on Erf 3620, 43 Lyons Street, Worcester in terms of Section 13 of the Breede Valley Municipality: Municipal Land Use Planning By-Law in order to allow the owner to erect an additional dwelling on the property and to encroach on the side building line.

NOTICE IS HEREBY GIVEN in terms of Sections 44 and 45 of the Breede Valley Municipal Land Use Planning By-Law that above-mentioned application has been received.

Full particulars of the application are available at the office of the Manager: Municipal Planning and Building Control, 3rd Floor, Civic Centre, Worcester, during office hours.

Objections and/or comments in terms of Section 49 of the Municipal Land Use Planning By-Law, should be submitted in writing to the Municipal Manager, Private Bag X3046, Worcester, 6849 on or before 23 April 2019. Any objections received after the 30 day period will be considered invalid.

Any enquiries may be directed to Ms. N. Gayiya, (023) 348 2631.

BVM Reference Number: 10/3/3/873

Notice Number: 06/2019

D Mc Thomas, MUNICIPAL MANAGER

22 March 2019

57692

BREDEVALLEI MUNISIPALITEIT

**AANSOEK OM OPHEFFING VAN BEPERKINGS,
VERGUNNINGSGEBRUIK (ADDISIONELE
WOONEENHEID) EN AFWYKING, ERF 3620,
LYONSSTRAAT 43, WORCESTER****EIENAAR(S): CV LEICHER EN M VAN GRAAN**

Aansoek is ontvang vir die opheffing van beperkings, vergunningsgebruik (addisionele wooneenheid) en afwyking op Erf 3620, Lyonsstraat 43, Worcester in terme van Artikel 13 van die Breede Vallei Munisipale Grondgebruiksbeplanning Verordening ten einde die eienaar in staat te stel om 'n addisionele wooneenheid op te rig en die kantboulyn te oorskry.

KENNIS GESKIED HIERMEE in terme van Artikels 44 en 45 van die Breede Vallei Munisipale Grondgebruikbeplanning Verordening dat bogenoemde aansoek ontvang is.

Volledige besonderhede van die aansoek is beskikbaar by die kantoor van die Bestuurder: Munisipale Beplanning en Boubeheer, 3de Vloer, Burgersentrum, Worcester, gedurende kantoorure.

Besware en/of kommentare in terme van Artikel 49 van die Munisipale Grondgebruiksbeplanning Verordeninge, moet skriftelik gerig word aan die Munisipale Bestuurder, Privaatsak X3046, Worcester, 6849 voor of op 23 April 2019. Enige besware ontvang na die 30 dae periode sal geag word as ongeldig.

Navrae kan gerig word aan Mej. N. Gayiya, (023) 348 2631.

BVM Verwysingsnommer: 10/3/3/873

Kennisgewingnommer: 06/2019

D Mc Thomas, MUNISIPALE BESTUURDER

22 Maart 2019

57692

WESTERN CAPE GAMBLING AND RACING BOARD

NOTICE

IN TERMS OF THE PROVISIONS OF SECTION 32(2) OF THE WESTERN CAPE GAMBLING AND RACING ACT, 1996 (ACT 4 OF 1996) (“THE ACT”), AS AMENDED, THE WESTERN CAPE GAMBLING AND RACING BOARD HEREBY GIVES NOTICE THAT THE FOLLOWING APPLICATION FOR A BOOKMAKER PREMISES LICENCE, AS PROVIDED FOR IN SECTIONS 27(kA) AND 55(A) OF THE ACT HAS BEEN RECEIVED.

Applicant for a new bookmaker premises licence: DCC Company (Pty) Ltd t/a Supabets
—A South African registered company

Registration number: 2015/197431/07

Business address of proposed bookmaker premises: Shop 243
227 Main Road
Wynberg
7824

Erf number: 172879

Section 33 of the Western Cape Gambling and Racing Act, 1996 (hereinafter “the Act”) requires the Western Cape Gambling and Racing Board (hereinafter “the Board”) to ask the public to submit comments and/or objections to gambling licence applications that are filed with the Board. The conduct of gambling operations is regulated in terms of both the Act and the National Gambling Act, 2004. This notice serves to notify members of the public that they may lodge objections and/ or comments to the above application on or before the closing date at the below-mentioned address and contacts. Since licensed gambling constitutes a legitimate business operation, moral objections for or against gambling will not be considered by the Board. An objection that merely states that one is opposed to gambling without much substantiation will not be viewed with much favour. You are hereby encouraged to read the Act and learn more about the Board’s powers and the matters pursuant to which objections may be lodged. These are outlined in Sections 28, 30, 31 and 35 of the Act. Members of the public can obtain a copy of the objection guidelines, which are an explanatory guide through the legal framework governing the lodgement of objections and the Board’s adjudication procedures. The objection guidelines are accessible from the Board’s website at www.wcgrb.co.za and copies can also be made available on request. The Board will consider all comments and objections lodged on or before the closing date during the adjudication of the application.

In the case of written objections to an application, the grounds on which such objections are founded must be furnished. Where comment in respect of an application is furnished, full particulars and facts to substantiate such comment must be provided. The name, address and telephone number of the person submitting the objection or offering the comment must also be provided. Comments or objections must reach the Board by no later than **16:00 on Friday, 12 April 2019.**

Postal address:

The Chief Executive Officer
Western Cape Gambling and Racing Board
PO Box 8175
ROGGEBAAI
8012

Street address:

The Chief Executive Officer
Western Cape Gambling and Racing Board
Seafare House
68 Orange Street
Gardens
CAPE TOWN

Fax No.: +27 (0)21 422 2602

E-mail to: Objections.Licensing@wcgrb.co.za

22 March 2019

57688

WES-KAAPSE RAAD OP DOBBELARY EN WEDRENNE

KENNISGEWING

INGEVOLGE DIE BEPALINGS VAN ARTIKEL 32(2) VAN DIE WES-KAAPSE WET OP DOBBELARY EN WEDRENNE, 1996 (WET 4 VAN 1996) (“DIE WET”), SOOS GEWYSIG, GEE DIE WES-KAAPSE RAAD OP DOBBELARY EN WEDRENNE HIERMEE KENNIS DAT DIE VOLGENDE AANSOEK OM ’N BOEKMAKERSPERSEELLISENSIE, SOOS WAARVOOR VOORSIENING GEMAAK WORD IN ARTIKELS 27(k) EN 55(A) VAN DIE WET, ONTVANG IS.

Aansoeker vir ’n nuwe boekmakerperseellisensie: DCC Company (Edms) Bpk h/a Supabets
—’n Suid-Afrikaans geregistreerde maatskappy

Registrasienuommer: 2015/197431/07

Besigheidsadres van voorgenome boekmakerperseel: Winkel 243
Hoofweg 227
Wynberg
7824

Erfnommer: 172879

Artikel 33 van die Wes-Kaapse Wet op Dobbeldary en Wedrenne, 1996 (hierna “die Wet” genoem) bepaal dat die Wes-Kaapse Raad op Dobbeldary en Wedrenne (hierna “die Raad” genoem) die publiek moet vra om kommentaar te lewer op en/of besware aan te teken teen dobbellisensie-aansoeke wat by die Raad ingedien word. Dobbeldersaamhede word kragtens die Wet sowel as die Nasionale Wet op Dobbeldary, 2004 geregleer. Hierdie kennisgewing dien om lede van die publiek in kennis te stel dat hulle voor die sluitingsdatum by ondergemelde adres en kontakte beswaar kan aanteken teen en/of kommentaar kan lewer op bogenoemde aansoek. Aangesien gelisensieerde dobbeldary ’n wettige besigheidsbedryf uitmaak, word morele besware ten gunste van of teen dobbeldary nie deur die Raad oorweeg nie. ’n Beswaar wat bloot meld dat iemand teen dobbeldary gekant is sonder veel staving sal nie gunstig oorweeg word nie. U word hiermee aangemoedig om die Wet te lees en meer inligting te verkry oor die Raad se magte en die aangeleenthede op grond waarvan besware ingedien kan word. Dit word in artikel 28, 30, 31 en 35 van die Wet uitgestippel. Lede van die publiek kan ’n afskrif van die riglyne vir besware bekom, wat ’n gids is wat die werking verduidelik van die regsraamwerk wat die indiening van besware, publieke verhore en die Raad se beoordelingsprosedures reguleer. Die riglyne vir besware is verkrygbaar op die Raad se webwerf by www.wcgrb.co.za en afskrifte kan ook op versoek beskikbaar gestel word. Die Raad sal alle kommentaar en besware oorweeg wat op of voor die sluitingsdatum tydens die beoordeling van die aansoek ingedien word.

In die geval van skriftelike besware teen ’n aansoek moet die gronde waarop sodanige besware berus, verskaf word. Waar kommentaar ten opsigte van ’n aansoek gegee word, moet volle besonderhede en feite om sodanige kommentaar te staaf, verskaf word. Die persoon wat die beswaar of kommentaar indien se naam, adres en telefoonnommer moet ook verstrek word. Kommentaar of besware moet die Raad bereik nie later nie as **16:00 op Vrydag, 12 April 2019**.

Posadres:

Die Uitvoerende Hoofbeampte
Wes-Kaapse Raad op Dobbeldary en Wedrenne
Posbus 8175
ROGGEBAAI
8012

Straatadres:

Die Hoof Uitvoerende Beampte
Wes-Kaapse Raad op Dobbeldary en Wedrenne
Seafare Huis
Oranjestraat 68
Tuine
KAAPSTAD

Faks Nr: +27 (0)21 422 2602

Eposadres: Objections.Licensing@wcgrb.co.za

22 Maart 2019

57688

CITY OF CAPE TOWN (TABLE BAY DISTRICT)

CLOSURE

- Portion of Rifle Abutting Erven 62502-62504 Cape Town,

(CT14/3/4/3/512/A00) (Sketch Plan STC 1240/1)

Notice is hereby given, in terms of Section 4 of the City of Cape Town's Immovable Property By-Law 2015 to the Director of Local Government, that the City of Cape Town has closed a Portion of Rifle Road Abutting Erven 62502-62504, Cape Town as depicted by the figure AB curve CDE on sketch plan STC 1240/1.

Such closure is effective from the date of publication of this notice.

(S.G. Ref. S/10834/8/ p176)

LUNGELO MBANDAZAYO, CITY MANAGER

STAD KAAPSTAD (TAFELBAAI-DISTRIK)

SLUITING

- Gedeelte van Rifleweg aangrensend aan Erwe 62502-62504 Kaapstad,

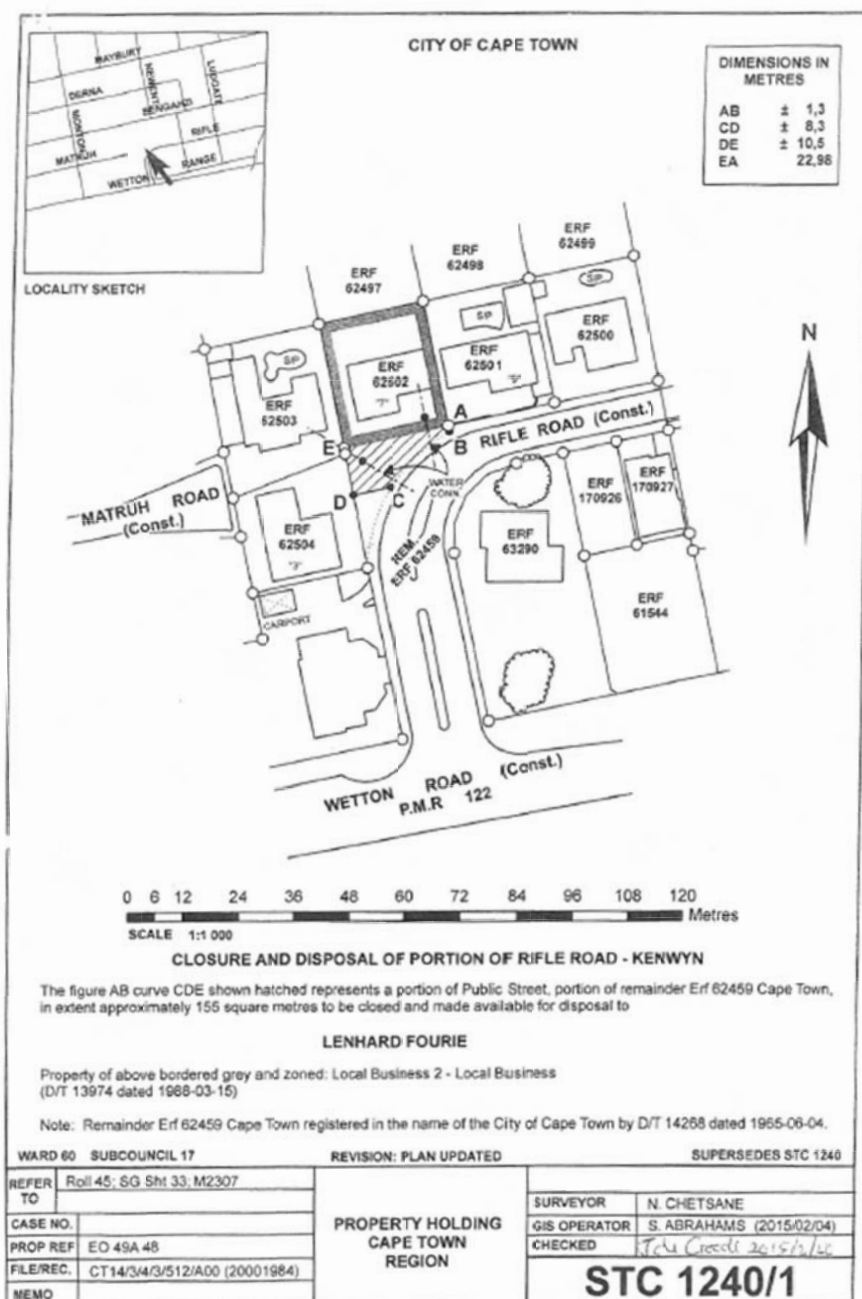
(CT14/3/4/3/512/A00) (Sketsplan STC 1240v1)

Kennisgewing geskied hiermee kragtens Artikel 4 van die Stad Kaapstad Verordening op Onroerende Eiendom, 2015, aan die direkteur van plaaslike regering, dat die Stad Kaapstad 'n gedeelte van Rifleweg wat grens aan Erwe 62502-62504, Kaapstad, soos aangetoon deur figuur AB kurwe CDE op sketsplan STC 1240/1, gesluit het.

Sodanige sluiting is van krag vanaf hierdie kennisgewing se publikasiedatum.

(S.G. Verw. S/10834/8/ p176)

LUNGELO MBANDAZAYO, STADSBESTUURDER



(R S A)

Tel: (021) 467 4800

Fax: (021) 465 3008

SURVEYOR-GENERAL-WESTERN CAPE
PRIVATE BAG X9028
CAPE TOWN
8000

STEPHEN OLD
PROFESSIONAL LAND SURVEYOR
97 ADAM TAS AVENUE
BOTHASIG
7441

2018-09-12

MY REF: S/10834/8 p176

Your ref:
Dated: 2018-09-11

Note: THIS STATUS REPORT IS
VALID FOR 3 YEARS

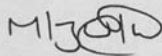
Attention: Stephen Old

Sir

**STATUS REPORT: CLOSURE OF PORTION OF RIFLE ROAD ABUTTING ERVEN 62502 – 62504
CAPE TOWN.**

1. The proposed closure of land as shown on your attached plan no. **STC 1240/1 HATCHED AND LETTERED ABCDE** represents: **A PORTION OF REMAINDER ERF 62459 CAPE TOWN.**
It is shown as **PUBLIC STREET** in my records.
2. **FOR OFFICE USE** The following properties will be endorsed: **ERVEN 62502 – 62504 AND 62459 CAPE TOWN.**
3. **Endorsement fees** amount to: **R940** (Paid)
4. I require a copy of a diagram suitable for registration purposes, surveyed and framed by a land surveyor, of the following: **PORTION TO BE CLOSED.** (Received).
5. A written consent (accompanied by a sketch) is required in terms of Section 60(1)(b) of the City Of Cape Town's Municipal Planning By-Law 2015 for the amendment of : **GENERAL PLAN TP NO: N/A**

Yours faithfully



ML ZULU
For SURVEYOR-GENERAL: WESTERN CAPE

FOR OFFICE USE

Certificate	
Gazette No.	
Dated	p

(R.S.A)

Tel: (021) 467 4800

Fax: (021) 465 3008

SURVEYOR-GENERAL-WESTERN CAPE
PRIVATE BAG X9028
CAPE TOWN
8000

2018-09-12

STEPHEN OLD
PROFESSIONAL LAND SURVEYOR
97 ADAM TAS AVENUE
BOTHASIG
7441

MY REF: S/10834/8 p176
Your ref:
Dated: 2018-09-11

Attention: Stephen Old

Sir

FINAL CERTIFICATE

CLOSURE OF PORTION OF RIFLE ROAD ABUTTING ERVEN 62502 – 62504 CAPE TOWN.

It is hereby certified that all my requirements in regard to the above have been met.

NB:

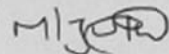
When submitting the final closure notice in terms of **Section 43(1)(f) of LUPA ACT 3/2014** or **Section 4 of City of Cape Town Municipal By-Law 2015** to the Director of Local Government, it must be accompanied by a copy of this certificate. Failure to do so, will lead to the refusal by the Director to publish the notice.

To expedite this matter please notify me after the final notice of closure has been advertised or tribunal decision ratified.

The wording must be strictly in accordance with the above heading.

NB: The Surveyor-General's reference must be quoted in the Notice of closure in the Media.

Yours faithfully



ML ZULU
For SURVEYOR-GENERAL: WESTERN CAPE

LOCAL GOVERNMENT: MUNICIPAL STRUCTURES ACT, 1998
(ACT 117 OF 1998)

THE GEORGE MUNICIPALITY (WC044) ESTABLISHMENT TENTH AMENDMENT NOTICE

In terms of Section 16 of the Local Government: Municipal Structures Act, 1998 (Act 117 of 1998), I hereby further amend the George Municipality (WC044) Establishment Notice, Provincial Notice 501/2000 published in *Provincial Gazette* 5592 dated 22 September 2000 (the principal Notice) as set out in the Schedule.

In this notice “principal Notice” means the George Municipality (WC044) Establishment Notice, Provincial Notice 501/2000 published in *Provincial Gazette* 5592 dated 22 September 2000, as amended by Provincial Notice 686/2000 published in the *Provincial Gazette* Extraordinary No. 5644 dated 4 December 2000, Provincial Notice 468/2002 published in the *Provincial Gazette* Extraordinary No. 5970 dated 19 December 2002, Provincial Notice 227/2003 published in the *Provincial Gazette* Extraordinary No. 6034 dated 24 June 2003, Provincial Notice 23/2006 published in *Provincial Gazette* Extraordinary No. 6335 dated 3 January 2006, Provincial Notice 129/2008 published in the *Provincial Gazette* No. 6511 dated 28 March 2008, Provincial Notice 66/2011 published in the *Provincial Gazette* Extraordinary No. 6854 dated 25 February 2011, Provincial Notice 286/2011 published in *Provincial Gazette* No. 6918 dated 21 October 2011, Provincial Notice 125/2016 published in *Provincial Gazette* Extraordinary No. 7599 dated 08 April 2016, Provincial Notice 63/2017 published in *Provincial Gazette* No. 7736 dated 3 March 2017 and Provincial Notice 109/2018 published in *Provincial Gazette* No. 7972 dated 24 August 2018.

Signed on this 20th day of March 2019.

AW BREDELL, PROVINCIAL MINISTER OF LOCAL GOVERNMENT, ENVIRONMENTAL AFFAIRS AND DEVELOPMENT PLANNING

SCHEDULE

Amendment of the Schedule to the Principal Notice

1. Section 9 of the principal Notice is amended by the substitution of the following subSection:

“Full-time Councillors

9. The Local Municipality may designate the following councillors as full-time councillors:—

- (a) the executive mayor;
- (b) the members of the mayoral committee;
- (c) the speaker;
- (d) a single whip appointed for Council;
- (e) Chairperson of Committee established in terms of Section 79 (“MPAC”); and
- (f) Chairperson of Committee established in terms of Section 79 (“GIPTN Committee”)

2. Short title and commencement

This Notice is called the George Municipality (WC044) Establishment Tenth Amendment Notice and comes into operation on the date of publication.

22 March 2019

57693

PLAASLIKE REGERING: WET OP MUNISIPALE STRUKTURE, 1998
(WET 117 VAN 1998)

**DIE GEORGE MUNISIPALITEIT
(WC044) INSTELLING TIENDE WYSIGINGSKENNIGSEWING**

Ingevolge Artikel 16 van die Wet op Plaaslike Regering: Munisipale Strukture, 1998 (Wet 117 van 1998), wysig ek hierby die George Munisipaliteit (WC044) Instellingskennisgewing, Provinsiale Kennisgewing 501/2000 gepubliseer in *Provinsiale Koerant* 5592 gedateer 22 September 2000 (die Hoofkennisgewing) soos uiteengesit in die Bylaag.

In hierdie kennisgewing beteken “Hoofkennisgewing” die George Munisipaliteit (WC044) Instellingskennisgewing, Provinsiale Kennisgewing 501/2000 gepubliseer in *Provinsiale Koerant* 5592 gedateer 22 September 2000, soos gewysig deur Provinsiale Kennisgewing 686/2000 gepubliseer in die Buitengewone *Provinsiale Koerant* Nr. 5644 gedateer 4 Desember 2000, Provinsiale Kennisgewing 468/2002 gepubliseer in die Buitengewone *Provinsiale Koerant* Nr. 5970 gedateer 19 Desember 2002, Provinsiale Kennisgewing 227/2003 gepubliseer in die Buitengewone *Provinsiale Koerant* No. 6034 gedateer 24 Junie 2003, Provinsiale Kennisgewing 23/2006 gepubliseer in Buitengewone *Provinsiale Koerant* Nr. 6335 gedateer 3 Januarie 2006, Provinsiale Kennisgewing 129/2008 gepubliseer in die *Provinsiale Koerant* Nr. 6511 gedateer 28 Maart 2008, Provinsiale Kennisgewing 66/2011 gepubliseer in die Buitengewone *Provinsiale Koerant* Nr. 6854 gedateer 25 Februarie 2011, Provinsiale Kennisgewing 286/2011 gepubliseer in *Provinsiale Koerant* Nr. 6918 gedateer 21 Oktober 2011, Provinsiale Kennisgewing 125/2016 gepubliseer in Buitengewone *Provinsiale Koerant* Nr. 7599 gedateer 8 April 2016, Provinsiale Kennisgewing 63/2017 gepubliseer in *Provinsiale Koerant* Nr. 7736 gedateer 3 Maart 2017 en Provinsiale Kennisgewing 109/2018 gepubliseer in *Provinsiale Koerant* Nr. 7972 gedateer 24 Augustus 2018.

Geteken op hierdie 20ste dag van Maart 2019.

AW BREDELL, PROVINSIALE MINISTER VAN PLAASLIKE REGERING, OMGEWINGSKE EN ONTWIKKELINGSBEPLANNING

BYLAE**Wysiging van die Bylaag tot die Hoofkennisgewing****1. Artikel 9 van die hoofkennisgewing word gewysig deur die vervanging deur die volgende subartikel:**

“Voltydse Raadslede

9. Die Plaaslike Munisipaliteit mag die volgende raadslede as voltydse raadslede aanwys:—
- die uitvoerende burgemeester;
 - lede van die burgemeesterskomitee;
 - die speaker;
 - 'n enkele sweep aangewys vir die Raad;
 - Voorsitter van Komitee aangestel ingevolge Artikel 79 ('MPAC'), en
 - Voorsitter van Komitee aangestel ingevolge Artikel 79 ('GIPTN Komitee')”

2. Kort titel en inwerkingtreeding

Hierdie Kennisgewing word die George Munisipaliteit (WC044) Instelling Tiende Wysigingskennisgewing genoem en tree in werking op die datum van publikasie.

22 Maart 2019

57693

URHULUMENTE WENGINQI: UMTHETHO WOBUME BOOMASIPALA
(UMTHETHO WE 117 KA 1998)

UMASIPALA WASE GEORGE (WC 044) UYILO OLUMISIWEYO LWESAZISO SESHUMI ESILUNGISIWEYO

Ngokwemigaqo yecandelo leshumi elinesithandathu ka Rhulumente wengingqi: umthetho wobume booMasipala (uMthetho 117 ka 1998), ndiyaqhubeleka ndilungisa isaziso esimisiweyo soMasipala wase George (WC044), isaziso sePhondo 501/2000 esipapashwe kwiphepha-ndaba *lePhondo elingu 5592* langomhla wamashumi amabini anesibini kweyoMsintsi nkonyaka ka 2000 (isaziso esiyintloko) njengoko siqatshelwe kuluhlu.

Kwesi saziso “isaziso esiyintloko” sithetha UMasipala wase George ((WC044) uyilo olumisiweyo lwesaziso seshumi esilungisiweyo.), isaziso sePhondo 501/2000 esipapashwe kwiphepha-ndaba *lePhondo elingu 5592* langomhla wamashumi amabini anesibini kweyoMsintsi nkonyaka ka 2000 njengoko silungisiwe sisaziso sephondo e 686/2000 esipapashwe kwiphepha-ndaba lePhondo inombolo yaso eyahlukileyo ngu 5644 sangomhla wesine kweyoMnga ku 2000, iphepha-ndaba *lePhondo elingu 468/2002* esipapashwe kwiphepha-ndaba lePhondo inombolo yaso eyahlukileyo ngu 5970 sangomhla weshumi elinethoba kweyoMnga ngo 2002, , iphepha-ndaba *lePhondo elingu 227/2003* esipapashwe kwiphepha-ndaba lePhondo inombolo yaso eyahlukileyo ngu 6034 sangomhla wamashumi amabini anane kweyeSilimela ngo 2003, isaziso sePhondo esingu 23/2006 esipapashwe kwiphepha-ndaba lePhondo inombolo yaso eyahlukileyo ngu 6335 sangomhla wesithathu kweyoMqungu ngo 2006, isaziso sePhondo esingu 129/2008 esipapashwe kwiphepha-ndaba lePhondo inombolo yaso eyahlukileyo ngu 6511 sangomhla wamashumi amabini anesibhoso kweyoKwindla ngo 2008, isaziso sePhondo esingu 66/2011 esipapashwe kwiphepha-ndaba lePhondo inombolo yaso eyahlukileyo ngu 6854 sangomhla wamashumi amabini anesihlanu kweyoMdumba ngo 2011, isaziso sePhondo esingu 228/2011 esipapashwe kwiphepha-ndaba lePhondo inombolo yaso ngu 6918 sangomhla wamashumi amabini ananye kweyeDwarha 2011, isaziso sePhondo esingu 125/2016 esipapashwe kwiphepha-ndaba lePhondo inombolo yaso eyahlukileyo ngu 7599 sangomhla wesibhozo kuTshazimpunzi ngo 2016, isaziso sePhondo esingu 63/2017 esipapashwe kwiphepha-ndaba lePhondo inombolo yaso eyahlukileyo ngu 7736 sangomhla wesithathu kweyoKwindla ngo 2017 kunye nesaziso sePhondo esingu 109/2018 esipapashwe kwiphepha-ndaba lePhondo inombolo yaso engu 7972 sangomhla wamashumi amabini anesine kweyeThupha ngo 2018.

Sityikitye ngalo mhla-20 Matshi 2019.

AW BREDELL, UMPHATHISWA WEPHONDO LOORHULUMENTE BOMMANDLA, IMICIMBI YENDALO NOCWANGCISO LOPHULISO

ULUDWE**Ukulungiswa koludwe kwisazisi esiyintloko****1. Icandelo lethoba lesazisi esiyintloko silungiswe ngokukhutshwa kweli candelwana lilandelayo:**

“Abacebisi abasisigxina

9. Umasipala wengingqi angabeka aba bacebisi balkandelayo njengabasisigxina—
- Usibonda wequmrhu;
 - Amalungu wekomiti likasibonda;
 - Isithethi;
 - Isekela elizimeleyo elinyulelwe ukucebisa;
 - Usihlalo wekomiti osungulwe ngemigaqo yecandelo lamashumi asixenxe anethoba ('MPAC'); kunye
 - Kunye nosihlalo wekomiti osungulwe ngemigaqo yecandelo lamashumi asixhenxe anethoba ('GIPTN Committee')”

2. Isihloko esifutshane kunye nokuqhubeka

Esi saziso sibizwa ngokuthi nguMasipala wase George (WC044), ukusungulwa kwesaziso seshumi esilungisiweyo esiqalise ukusebenza ngomhla woshicilelo

22 kweyoKwindla 2019

57693