

nr Watten



DIE PROVINSIE TRANSVAAL  
Buitengewone  
Offisiële Koerant.



PROVINCE OF TRANSVAAL  
Official Gazette  
Extraordinary.

(As 'n Nuusblad by die Poskantoor Geregistreer)

(Registered at the Post Office as a Newspaper)

Vol. CLXXVI.] PRYS 5c. PRETORIA, 15 MAART 1961. PRICE 5c. [No. 2891.

No. 72 (Administrateurs-), 1961.]

PROKLAMASIE

DEUR SY EDELE DIE ADMINISTRATEUR VAN DIE  
PROVINSIE TRANSVAAL.

Nademaal daar by paragraaf (d) van artikel elf van die Wildordonnansie, 1949 (Ordonnansie No. 23 van 1949), bepaal word dat die Administrateur van tyd tot tyd, na verwysing na die Raad van Advies insake Fauna en Flora, by proklamasie in die Staatskoerant enige gebied in sodanige proklamasie omskryf, tot 'n wildreserwe kan verklaar tot tyd en wyl dit gedeproklameer word;

En nademaal daar by subartikel (2) van artikel twee van die Ordonnansie op die Beskerming van Inheemse Flora, 1940 (Ordonnansie No. 9 van 1940), bepaal word dat die Administrateur van tyd tot tyd by proklamasie in die Offisiële Koerant van die Provinsie Transvaal een of meer reserwes vir inheemse flora kan instel of so 'n reserwe kan ophef, met ingang van 'n bepaalde datum af;

So is dit dat ek, kragtens en ingevolge voornoemde bevoegdhede, en na verwysing na die genoemde Raad, hierby verklaar dat elkeen van die gebiede in Bylae A hierby omskryf, met ingang van 20 Maart 1961 af beide 'n wildreserwe en 'n reserwe vir inheemse flora is waarop die bepalinge van genoemde Ordonnansies van toepassing sal wees;

En ter algemene inligting word hierby bekendgemaak dat ek die naam wat in die voormelde Bylae A hierby aangedui word, aan elkeen van die reserwes toegeken het;

En ek verklaar voorts dat die reserwes in Bylae B hierby uiteengesit, hierby gedeproklameer word as wildreserwes en opgehef word as reserwes vir inheemse flora met ingang van 20 Maart 1961 af;

En voorts herroep ek hierby Proklamasie No. 41 van 1961, gepubliseer in Buitengewone Offisiële Koerant No. 2883 van 8 Februarie 1961.

GOD BEHOEDE DIE KONINGIN.

Gegee onder my Hand te Pretoria, op hede die Sewende dag van Maart Eenduisend Negehonderd Een-en-sestig.

F. H. ODENDAAL,  
Administrateur van die Provinsie Transvaal.

F.F. 42.

BYLAE A.

VUURFONTEIN-PRIVAATNATUURRESERVAAT,  
DISTRİK BLOEMHOF.

(Grootte: 1,975 morg.)

Beginnende by die suidwestelike baken van die resterende gedeelte van die plaas Vuurfontein No. 117—H.O.; van daar in 'n noordwestelike rigting langs die westelike grens en met inbegrip van die resterende gedeelte, en gedeeltes 9 en 10 van die plaas Vuurfontein No. 117—H.O. tot by die westelike baken van gedeelte 10 daarvan; van daar in 'n noordoostelike, noordoostelike rigting langs die westelike grens en met inbegrip van gedeelte 10 van die plaas Vuurfontein No. 117—H.O. tot by die noordwestelike baken daarvan; van daar in 'n oostelike rigting langs die noordelike grens en met inbegrip van gedeeltes 10 en 9 van die plaas Vuurfontein No. 117—H.O. tot by die noordoostelike baken van laas-

A—1118676

No. 72 (Administrator's), 1961.]

PROCLAMATION

BY THE HONOURABLE THE ADMINISTRATOR OF THE  
PROVINCE OF TRANSVAAL.

Whereas it is provided in paragraph (d) of section eleven of the Game Ordinance, 1949 (Ordinance No. 23 of 1949), that the Administrator may, from time to time, after reference to the Fauna and Flora Advisory Board, by proclamation in the Gazette, declare any area defined in such proclamation to be a game reserve until it is deproclaimed;

And whereas it is provided in sub-section (2) of section two of the Native Flora Protection Ordinance, 1940 (Ordinance No. 9 of 1940), that the Administrator may from time to time by proclamation in the Provincial Gazette of the Province of Transvaal establish one or more native flora reserves or cancel any such reserve, with effect from a stipulated date;

Now, therefore, under and by virtue of the aforesaid powers, and after reference to the said Board, I do hereby declare that each of the areas defined in Schedule A hereto shall from the 20th March, 1961, be both a game reserve and a native flora reserve to which the provisions of the said Ordinances will apply;

And for general information it is hereby made known that I have assigned to each reserve the name indicated in the said Schedule A hereto;

And, I do further declare that the reserves set out in Schedule B hereto are hereby deproclaimed as game reserves and cancelled as native flora reserves from the 20th March, 1961;

And I do further hereby withdraw Proclamation No. 41 of 1961, published in Official Gazette Extraordinary No. 2883 of 8th February, 1961.

GOD SAVE THE QUEEN.

Given under my Hand at Pretoria on this Seventh day of March, One thousand Nine hundred and Sixty-one.

F. H. ODENDAAL,  
Administrator of the Province of Transvaal.

F.F. 42.

SCHEDULE A.

VUURFONTEIN-PRIVATE NATURE RESERVE,  
DISTRİK OF BLOEMHOF.

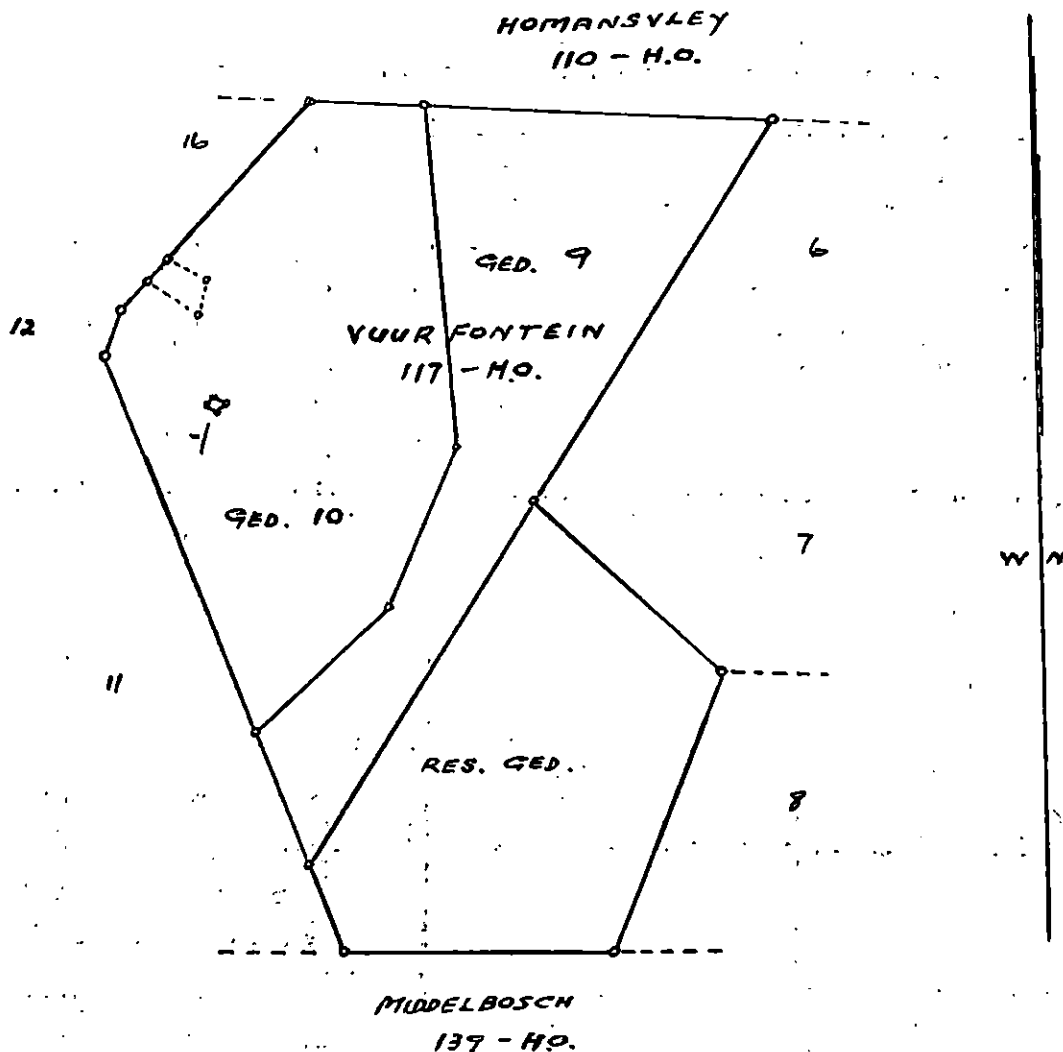
(Extent: 1,975 morgen.)

Commencing at the south-western beacon of the remaining extent of the farm Vuurfontein No. 117—H.O.; thence in a north-westerly direction along the western boundary of and including the remaining extent, and portions 9 and 10 of the farm Vuurfontein No. 117—H.O. to the western beacon of portion 10 thereof; thence in a north-easterly, north-easterly direction along the western boundary of and including portion 10 of the farm Vuurfontein No. 117—H.O. to the north-western beacon thereof; thence in an easterly direction along the northern boundary of and including portions 10 and 9 of the farm Vuurfontein No. 117—H.O. to the north-eastern beacon

genoemde gedeelte; van daar in 'n suidwestelike rigting langs die oostelike grens en met inbegrip van gedeelte 9 van die plaas Vuurfontein No. 117—H.O. tot by die noordwestelike baken van die resterende gedeelte van genoemde plaas; van daar in 'n suidoostelike rigting langs die noordelike grens en met inbegrip van die resterende gedeelte van die plaas Vuurfontein No. 117—H.O. tot by die noordoostelike baken daarvan; van daar in 'n suidwestelike rigting langs die oostelike grens en met inbegrip van die resterende gedeelte van die plaas Vuurfontein No. 117—H.O. tot by die suidoostelike baken daarvan; van daar in 'n westelike rigting langs die suidelike grens en met inbegrip van die resterende gedeelte van die plaas Vuurfontein No. 117—H.O. tot by die suidwestelike baken daarvan, die aanvangspunt.

of the last-named portion; thence in a south-westerly direction along the eastern boundary of and including portion 9 of the farm Vuurfontein No. 117—H.O. to the north-western beacon of the remaining extent of the said farm; thence in a south-easterly direction along the northern boundary of and including the remaining extent of the farm Vuurfontein No. 117—H.O. to the north-eastern beacon thereof; thence in a south-westerly direction along the eastern boundary of and including the remaining extent of the farm Vuurfontein No. 117—H.O. to the south-eastern beacon thereof; thence in a westerly direction along the southern boundary of and including the remaining extent of the farm Vuurfontein No. 117—H.O. to the south-western beacon thereof, the point of commencement.

**VUURFONTEIN-PRIVAATNATUURRESERVAAT.  
VUURFONTEIN PRIVATE NATURE RESERVE.**



SKAAL  
SCALE 1:50000

**ELANGENI-PRIVAATNATUURRESERVAAT,  
DISTRIK KRUGERSDORP.**

(Grootte: 13 morg.)

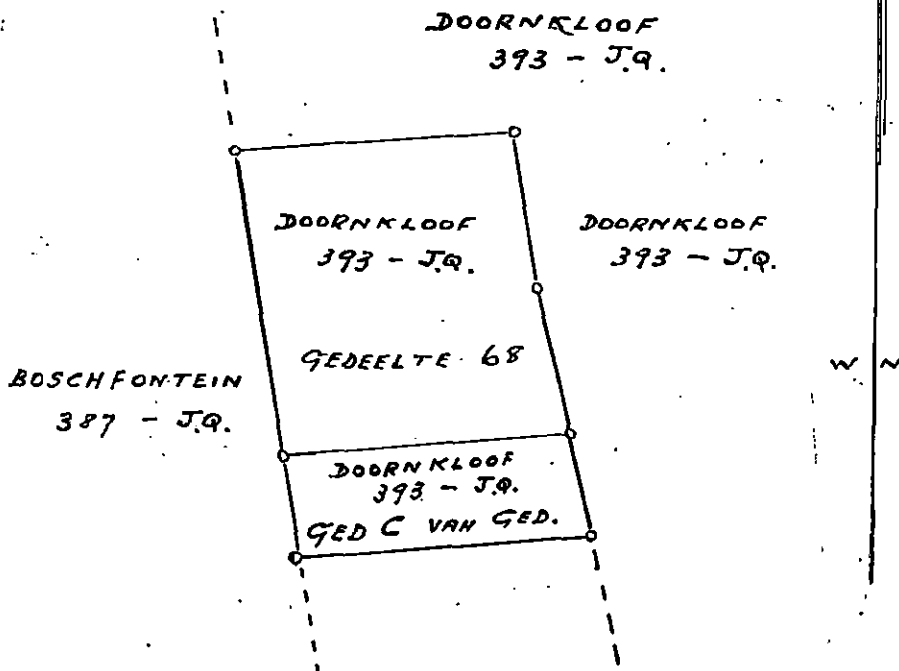
Beginnende by die suidwestelike baken van gedeelte C van gedeelte van die plaas Doornkloof No. 393—J.Q.; van daar in 'n noordwestelike rigting langs die westelike grens en met inbegrip van gedeelte C van gedeelte en gedeelte 68 van die plaas Doornkloof No. 393—J.Q. tot by die noordwestelike baken van laasgenoemde gedeelte; van daar in 'n oostelike rigting langs die noordelike grens en met inbegrip van gedeelte 68 van die plaas Doornkloof No. 393—J.Q. tot by die noordoostelike baken daarvan; van daar in 'n suidoostelike rigting langs die oostelike grens en met inbegrip van gedeelte 68 en gedeelte C van gedeelte van die plaas Doornkloof No. 393—J.Q. tot by die suidoostelike baken van laasgenoemde gedeelte; van daar in 'n westelike rigting langs die suidelike grens en met inbegrip van gedeelte C van gedeelte van die plaas Doornkloof No. 393—J.Q. tot by die suidwestelike baken daarvan, die aanvangspunt.

**ELANGENI PRIVATE NATURE RESERVE,  
DISTRICT OF KRUGERSDORP.**

(Extent: 13 morgen.)

Commencing at the south-western beacon of portion C of portion of the farm Doornkloof No. 393—J.Q.; thence in a north-westerly direction along the western boundary of and including portion C of portion and portion 68 of the farm Doornkloof No. 393—J.Q. to the north-western beacon of the last-named portion; thence in an easterly direction along the northern boundary of and including portion 68 of the farm Doornkloof No. 393—J.Q. to the north-eastern beacon thereof; thence in a south-easterly direction along the eastern boundary of and including portion 68 and portion C of portion of the farm Doornkloof No. 393—J.Q. to the south-eastern beacon of the last-named portion; thence in a westerly direction along the southern boundary of and including portion C of portion of the farm Doornkloof No. 393—J.Q. to the south-western beacon thereof, the point of commencement.

**ELANGENI-PRIVAATNATUURRESERVAAT.**  
**ELANGENI PRIVATE NATURE RESERVE.**



SKAAL 1: 7500 KAAPSE VOET.  
 SCALE 1: 7500 KAAPSE VOET.

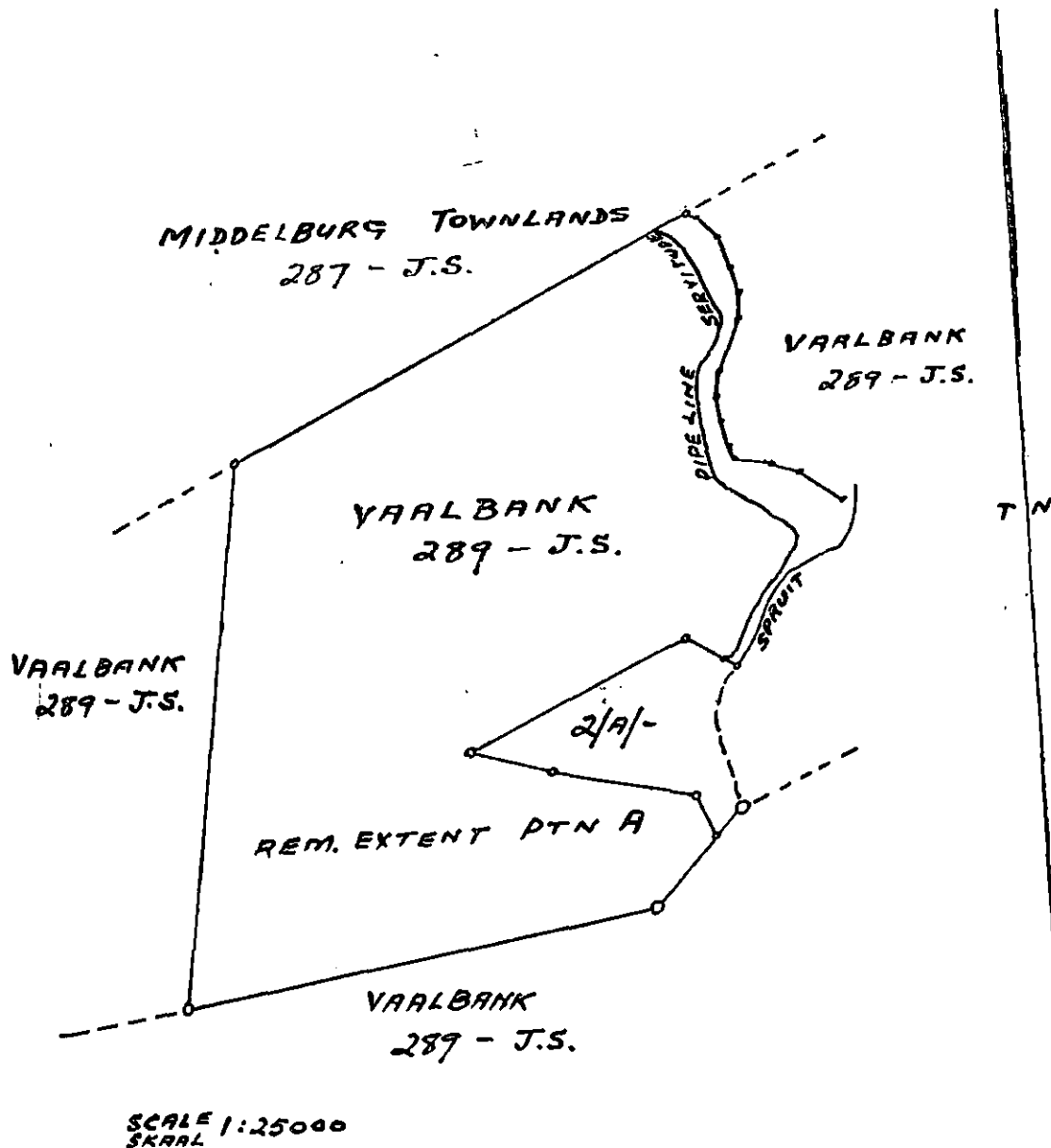
**VAALBANK-PRIVAATNATUURRESERVAAT,**  
**DISTRIK MIDDELBURG, TRANSCVAAL.**  
 (Grootte: 448 morg.)

Beginnende by die suidwestelike baken van die resterende gedeelte van gedeelte A van die plaas Vaalbank No. 289—J.S.; van daar in 'n noordoostelike rigting langs die suidelike grens en met inbegrip van genoemde gedeelte tot by die suidoostelike baken daarvan; van daar in 'n noordoostelike rigting langs die oostelike grens en met inbegrip van genoemde gedeelte tot by die suidoostelike baken van gedeelte 2 van gedeelte A van gedeelte van genoemde plaas; van daar in 'n noordwestelike, noordwestelike rigting langs die suidelike grens van gedeelte 2 van gedeelte A van gedeelte van genoemde plaas tot by die westelike baken van laasgenoemde gedeelte; van daar in 'n noordoostelike rigting langs die noordelike grens van gedeelte 2 van gedeelte A van gedeelte tot by die noordelike baken daarvan; van daar in 'n suidoostelike rigting langs die noordelike grens van gedeelte 2 van gedeelte A van gedeelte tot by die noordoostelike baken (middel van spruit) daarvan (gedeelte 2 van Gedeelte A van gedeelte uitgesluit; vandaar in 'n algemene noordoostelike rigting langs 'n denkbeeldige lyn in die middel van die spruit en met inbegrip van die resterende gedeelte van gedeelte A van die plaas Vaalbank No. 289—J.S. tot by die oostelike baken (middel van spruit) daarvan; van daar in 'n algemene noordwestelike rigting langs die oostelike grens en met inbegrip van die resterende gedeelte van gedeelte A van genoemde plaas tot by die noordoostelike baken daarvan; van daar in 'n suidwestelike rigting langs die noordelike grens en met inbegrip van die resterende gedeelte van gedeelte A van die plaas Vaalbank No. 289—J.S. tot by die noordwestelike baken daarvan; van daar in 'n suidwestelike rigting langs die westelike grens en met inbegrip van die resterende gedeelte van gedeelte A van die plaas Vaalbank No. 289—J.S. tot by die suidwestelike baken daarvan, die aanvangspunt.

**VAALBANK PRIVATE NATURE RESERVE,**  
**DISTRICT OF MIDDELBURG, TRANSCVAAL.**  
 (Extent: 448 morgen.)

Commencing at the south-western beacon of the remaining extent of portion A of the farm Vaalbank No. 289—J.S.; thence in a north-easterly direction along the southern boundary of and including the said portion to the south-eastern beacon thereof; thence in a north-easterly direction along the eastern boundary of and including the said portion to the south-eastern beacon of portion 2 of portion A of portion of the said farm; thence in a north-westerly, north-westerly direction along the southern boundary of portion 2 of portion A of portion of the said farm to the western beacon of the last-named portion; thence in a north-easterly direction along the northern boundary of portion 2 of portion A of portion to the northern beacon thereof; thence in a south-easterly direction along the northern boundary of portion 2 of portion A of portion to the north-eastern beacon (mid-stream river) thereof (portion 2 of portion A of portion to be excluded); thence generally in a north-easterly direction along an imaginary line in the middle of the river and including the remaining extent of portion A of the farm Vaalbank No. 289—J.S. to the eastern beacon (mid-stream river) thereof; thence generally in a north-westerly direction along the eastern boundary of and including the remaining extent of portion A of the said farm to the north-eastern beacon thereof; thence in a south-westerly direction along the northern boundary of and including the remaining extent of portion A of the farm Vaalbank No. 289—J.S. to the north-western beacon thereof; thence in a south-westerly direction along the western boundary of and including the remaining extent of portion A of the farm Vaalbank No. 289—J.S. to the south-western beacon thereof, the point of commencement.

VAALBANK-PRIVAATNATUURRESERVAAT.  
VAALBANK PRIVATE NATURE RESERVE.



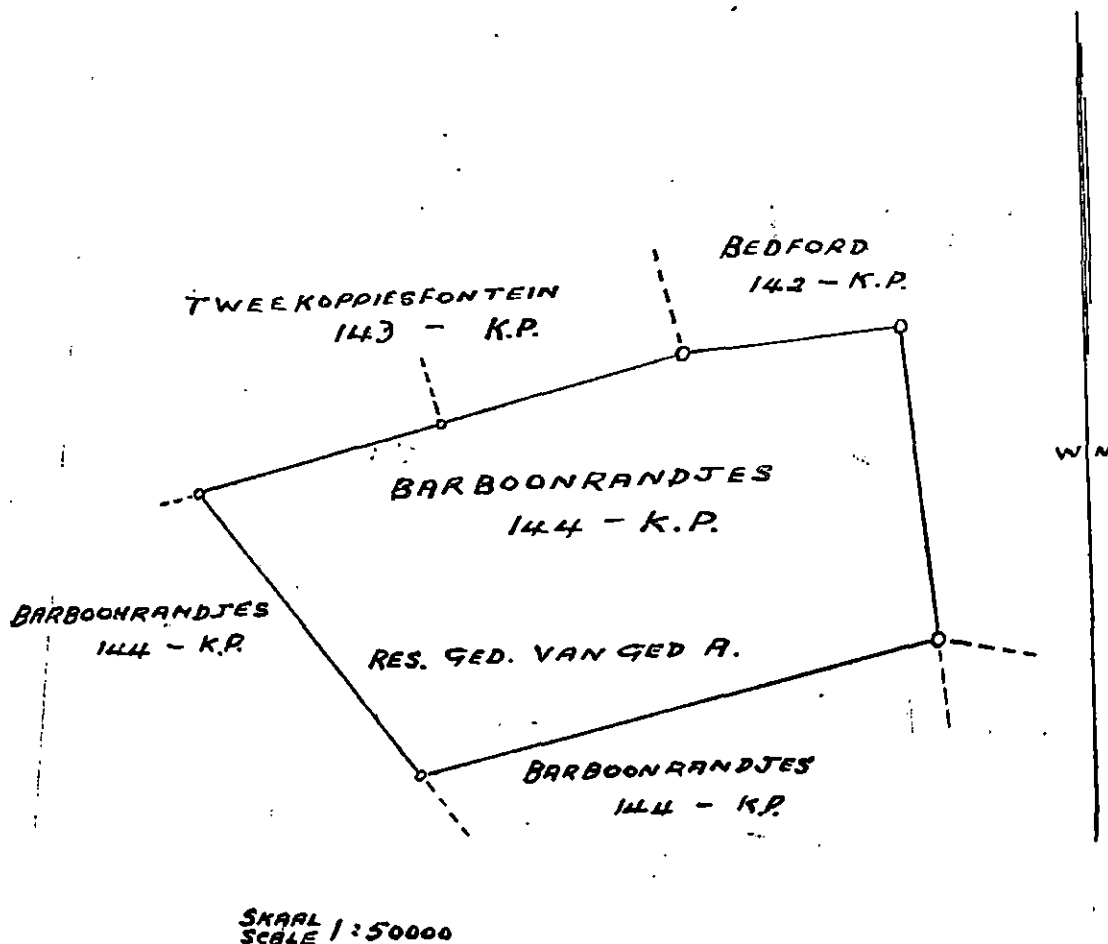
NELLIE-PRIVAATNATUURRESERVAAT,  
DISTRICK MARICO.  
(Grootte: 1,068 morg.)

Beginnende by die suidwestelike baken van die resterende gedeelte van gedeelte A van die plaas Barboonrandjes No. 144—K.P.; van daar in 'n noordwestelike rigting langs die westelike grens en met inbegrip van die resterende gedeelte van gedeelte A van die plaas Barboonrandjes No. 144—K.P. tot by die noordwestelike baken daarvan; van daar in 'n noordoostelike rigting langs die noordelike grens en met inbegrip van die resterende gedeelte van gedeelte A van die plaas Barboonrandjes No. 144—K.P. tot by die suidwestelike baken van die plaas Bedford No. 142—K.P.; van daar in 'n noordoostelike rigting langs die noordelike grens en met inbegrip van die resterende gedeelte van gedeelte A van die plaas Barboonrandjes No. 144—K.P. tot by die suidoostelike baken daarvan; van daar in 'n suidoostelike rigting langs die oostelike grens en met inbegrip van die resterende gedeelte van gedeelte A van die plaas Barboonrandjes No. 144—K.P. tot by die suidoostelike baken daarvan; vandaar in 'n suidwestelike rigting langs die suidelike grens en met inbegrip van die resterende gedeelte van gedeelte A van die plaas Barboonrandjes No. 144—K.P. tot by die suidwestelike baken daarvan, die aanvangspunt.

NELLIE PRIVATE NATURE RESERVE,  
DISTRICT OF MARICO.  
(Extent: 1,068 morgen.)

Commencing at the south-western beacon of the remaining extent of portion A of the farm Barboonrandjes No. 144—K.P.; thence in a north-westerly direction along the western boundary of and including the remaining extent of portion A of the farm Barboonrandjes No. 144—K.P. to the north-western beacon thereof; thence in a north-easterly direction along the northern boundary of and including the remaining extent of portion A of the farm Barboonrandjes No. 144—K.P. to the south-western beacon of the farm Bedford No. 142—K.P.; thence in a north-easterly direction along the northern boundary of and including the remaining extent of portion A of the farm Barboonrandjes No. 144—K.P. to the north-eastern beacon thereof; thence in a south-easterly direction along the eastern boundary of and including the remaining extent of portion A of the farm Barboonrandjes No. 144—K.P. to the south-eastern beacon thereof; thence in a south-westerly direction along the southern boundary of and including the remaining extent of portion A of the farm Barboonrandjes No. 144—K.P. to the south-western beacon thereof, the point of commencement.

**NELLIE-PRIVAATNATUURRESERVAAT.  
NELLIE PRIVATE NATURE RESERVE.**



**RED ACRES-PRIVAATNATUURRESERVAAT,  
DISTRIK NELSPRUIT.  
(Grootte: 2,406 morg.)**

**RED ACRES PRIVATE NATURE RESERVE,  
DISTRICT OF NELSPRUIT.  
(Extent: 2,406 morgen.)**

Beginnende by die suidoostelike baken van die resterende gedeelte van die plaas Goed Geluk No. 444—J.T.; van daar in 'n noordwestelike rigting langs die suidelike grens en met inbegrip van genoemde gedeelte vir 'n afstand van ongeveer 3,251 jaarts tot by 'n baken; van daar in 'n noordoostelike rigting en met inbegrip van genoemde gedeelte vir 'n afstand van ongeveer 3,312 jaarts tot by 'n baken; van daar in 'n suidwestelike rigting en met inbegrip van genoemde gedeelte vir 'n afstand van ongeveer 2,303 jaarts tot by 'n baken; van daar in 'n suidwestelike rigting en met inbegrip van genoemde gedeelte vir 'n afstand van ongeveer 2,000 jaarts tot by 'n baken; van daar in 'n noordwestelike rigting en met inbegrip van genoemde gedeelte vir 'n afstand van ongeveer 1,009 jaarts tot by 'n baken; van daar in 'n westelike rigting en met inbegrip van genoemde gedeelte vir 'n afstand van ongeveer 278 jaarts tot by 'n baken; van daar in 'n noordelike rigting langs die oostelike grens van genoemde gedeelte vir 'n afstand van ongeveer 1,232 jaarts tot by die noordwestelike baken daarvan; van daar in 'n noordoostelike rigting langs die noordelike grens van genoemde gedeelte vir 'n afstand van ongeveer 3,054 jaarts tot by 'n baken; van daar in 'n noordoostelike rigting langs die noordelike grens en met inbegrip van genoemde gedeelte vir 'n afstand van ongeveer 2,164 jaarts tot by 'n baken; van daar in 'n suidoostelike rigting langs die noordelike grens en met inbegrip van genoemde gedeelte vir 'n afstand van ongeveer 1,319 jaarts tot by 'n baken; van daar in 'n noordelike rigting langs 'n denkbeeldige lyn in die middel van die Elandsrivier en met inbegrip van genoemde gedeelte tot by 'n baken op die noordelike grens van die plaas Goed Geluk No. 444—J.T.; van daar in 'n oostelike rigting vir 'n afstand van 136 jaarts tot by die noordwestelike baken van gedeelte A van die plaas Goed Geluk No. 444—J.T.; van daar in 'n suidelike rigting langs die westelike grens van gedeelte A vir 'n afstand van ongeveer 415 jaarts tot by die suidwestelike

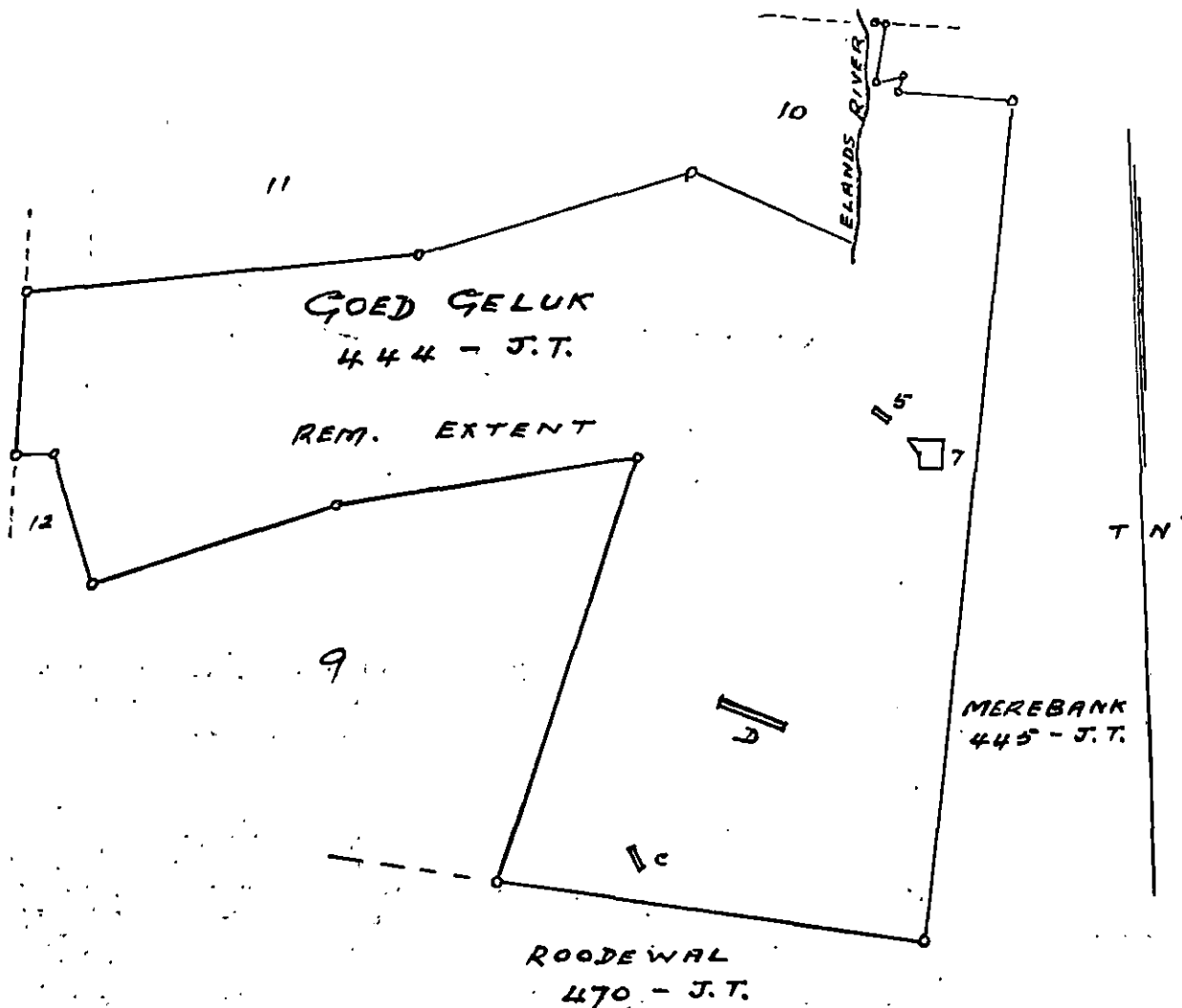
Commencing at the south-eastern beacon of the remaining extent of the farm Goed Geluk No. 444—J.T.; thence in a north-westerly direction along the southern boundary of and including the said portion for a distance of approximately 3,251 yards to a beacon; thence in a north-easterly direction and including the said portion for a distance of approximately 3,312 yards to a beacon; thence in a south-westerly direction and including the said portion for a distance of approximately 2,303 yards to a beacon; thence in a south-westerly direction and including the said portion for a distance of approximately 2,000 yards to a beacon; thence in a north-westerly direction and including the said portion for a distance of approximately 1,009 yards to a beacon; thence in a westerly direction and including the said portion for a distance of approximately 278 yards to a beacon; thence in a northerly direction along the eastern boundary of the said portion for a distance of approximately 1,232 yards to the north-western beacon thereof; thence in a north-easterly direction along the northern boundary of the said portion for a distance of approximately 3,054 yards to a beacon; thence in a north-easterly direction along the northern boundary of and including the said portion for a distance of approximately 2,164 yards to a beacon; thence in a south-easterly direction along the northern boundary of and including the said portion for a distance of approximately 1,319 yards to a beacon; thence in a northerly direction along an imaginary line in the middle of the Elands River and including the said portion to a beacon on the northern boundary of the farm Goed Geluk No. 444—J.T.; thence in an easterly direction for a distance of 136 yards to the north-western beacon of portion A of the farm Goed Geluk No. 444—J.T.; thence in a southerly direction along the western boundary of portion A for a distance of approximately 415 yards to the south-western beacon thereof; thence in a north-easterly direction along the southern boundary of

baken daarvan; van daar in 'n noordoostelike rigting langs die suidelike grens van gedeelte A tot by die suidoostelike baken daarvan; van daar in 'n suidelike rigting vir 'n afstand van ongeveer 169 jaarts tot by 'n baken; van daar in 'n oostelike rigting en met inbegrip van die resterende gedeelte van die plaas Goed Geluk No. 444—J.T. vir 'n afstand van ongeveer 835 jaarts tot by die noordoostelike baken daarvan; van daar in 'n suidwestelike rigting langs die oostelike grens en met inbegrip van die resterende gedeelte van die plaas vir 'n afstand van 6,349 jaarts tot by die suidoostelike baken daarvan, die aanvangspunt.

portion A to the south-eastern beacon thereof; thence in a southerly direction for a distance of approximately 169 yards to a beacon; thence in an easterly direction including the remaining extent of the farm Goed Geluk No. 444—J.T. for a distance of approximately 835 yards to the north-eastern beacon thereof; thence in a south-westerly direction along the eastern boundary of and including the remaining extent of the farm for a distance of 6,349 yards to the south-eastern beacon thereof, the point of commencement.

**RED ACRES-PRIVAATNATUURRESERVAAT.**

**RED ACRES PRIVATE NATURE RESERVE.**



SCALE 1:50000  
SKAAL

**J. W. VAN NIEKERK-PRIVAATNATUUR-RESERVAAT, DISTRIK POTGIETERSRUS.**

(Grootte: 667 morg.)

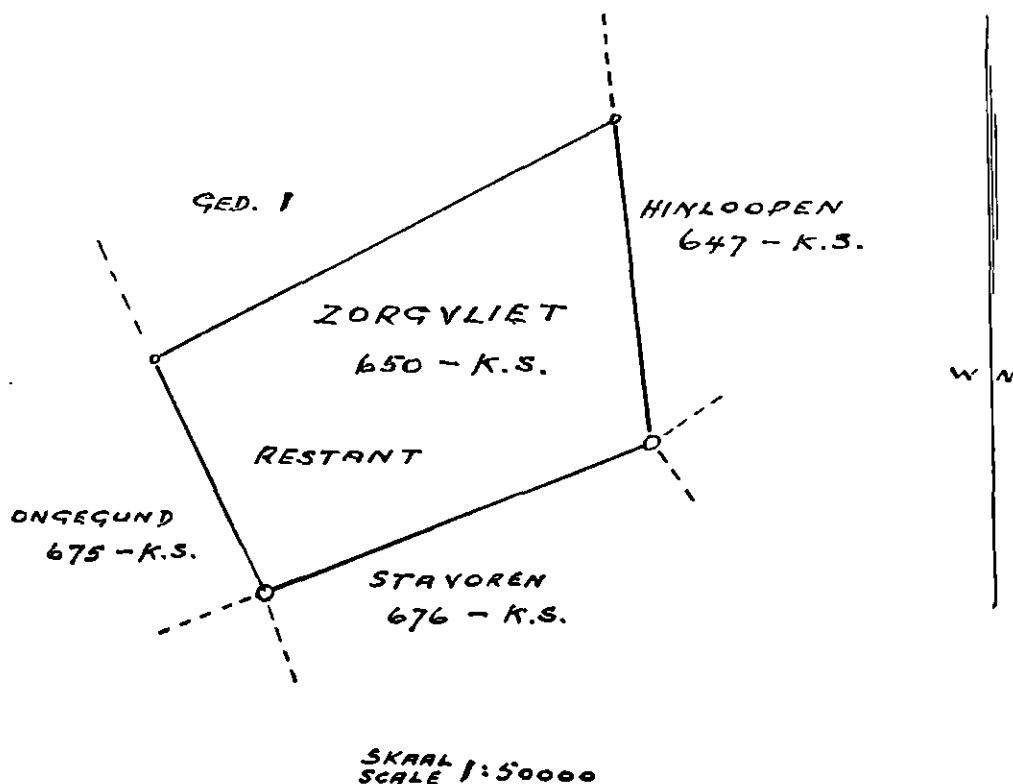
Beginnende by die suidwestelike baken van die resterende gedeelte van die plaas Zorgvliet No. 650—K.S.; van daar in 'n noordwestelike rigting langs die westelike grens en met inbegrip van die resterende gedeelte van die plaas Zorgvliet No. 650—K.S. tot by die noordwestelike baken daarvan; van daar in 'n noordoostelike rigting langs die noordelike grens en met inbegrip van die resterende gedeelte van die plaas Zorgvliet No. 650—K.S. tot by die noordoostelike baken daarvan; van daar in 'n suidoostelike rigting langs die oostelike grens en met inbegrip van die resterende gedeelte van die plaas Zorgvliet No. 650—K.S. tot by die suidoostelike baken daarvan; van daar in 'n suidwestelike rigting langs die suidelike grens en met inbegrip van die resterende gedeelte van die plaas Zorgvliet No. 650—K.S. tot by die suidwestelike baken daarvan, die aanvangspunt.

**J. W. VAN NIEKERK PRIVATE NATURE RESERVE, DISTRICT OF POTGIETERSRUS.**

(Extent: 667 morgen.)

Commencing at the south-western beacon of the remaining extent of the farm Zorgvliet No. 650—K.S.; thence in a north-westerly direction along the western boundary of and including the remaining extent of the farm Zorgvliet No. 650—K.S. to the north-western beacon thereof; thence in a north-easterly direction along the northern boundary of and including the remaining extent of the farm Zorgvliet No. 650—K.S. to the north-eastern beacon thereof; thence in a south-easterly direction along the eastern boundary of and including the remaining extent of the farm Zorgvliet No. 650—K.S. to the south-eastern beacon thereof; thence in a south-westerly direction along the southern boundary of and including the remaining extent of the farm Zorgvliet No. 650—K.S. to the south-western beacon thereof, the point of commencement.

**J. W. VAN NIEKERK-PRIVAATNATUURRESERVAAT.  
J. W. VAN NIEKERK PRIVATE NATURE RESERVE.**



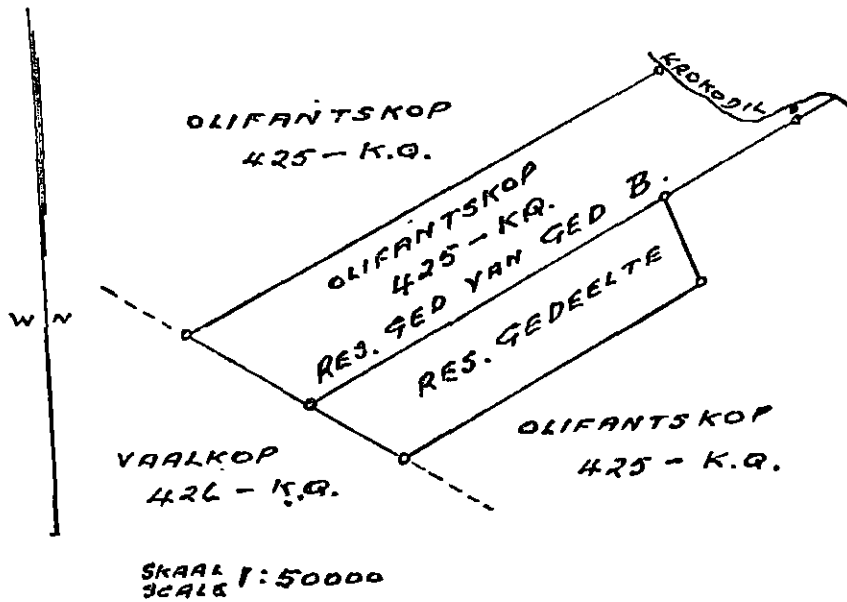
**OLIFANTSKOP-PRIVAATNATUURRESERVAAT,  
DISTRIK RUSTENBURG.  
(Grootte: 523 morg.)**

Beginnende by die suidwestelike baken van die resterende gedeelte van die plaas Olifantskop No. 425—K.Q.; van daar in 'n noordwestelike rigting langs die westelike grens en met inbegrip van die resterende gedeelte en die resterende gedeelte van gedeelte B van die plaas Olifantskop No. 425—K.Q. tot by die noordwestelike baken van laasgenoemde gedeelte; van daar in 'n noordoostelike rigting langs die noordelike grens en met inbegrip van die resterende gedeelte van gedeelte B van die plaas Olifantskop No. 425—K.Q. tot by die noordoostelike baken (middel van Krokodilrivier) daarvan; van daar in 'n suidoostelike rigting langs 'n denkbeeldige lyn in die middel van die Krokodilrivier en met inbegrip van die resterende gedeelte van gedeelte B van die plaas Olifantskop No. 425—K.Q. tot by 'n punt in die middel van die Krokodilrivier; van daar in 'n suidelike rigting en met inbegrip van die resterende gedeelte van gedeelte B van die plaas Olifantskop No. 425—K.Q. tot by die suidoostelike baken daarvan; van daar in 'n suidwestelike rigting langs die suidelike grens en met inbegrip van die resterende gedeelte van gedeelte B van die plaas Olifantskop No. 425—K.Q. tot by die noordoostelike baken van die resterende gedeelte van genoemde plaas; van daar in 'n suidoostelike rigting langs die oostelike grens en met inbegrip van die resterende gedeelte van die plaas Olifantskop No. 425—K.Q. tot by die suidoostelike baken daarvan; van daar in 'n suidwestelike rigting langs die suidelike grens en met inbegrip van die resterende gedeelte van die plaas Olifantskop No. 425—K.Q. tot by die suidwestelike baken daarvan; die aanvangspunt.

**OLIFANTSKOP PRIVATE NATURE RESERVE,  
DISTRICT OF RUSTENBURG.  
(Extent: 523 morgen.)**

Commencing at the south-western beacon of the remaining extent of the farm Olifantskop No. 425—K.Q.; thence in a north-westerly direction along the western boundary of and including the remaining extent and the remaining extent of portion B of the farm Olifantskop No. 425—K.Q. to the north-western beacon of the last-named portion; thence in a north-easterly direction along the northern boundary of and including the remaining extent of portion B of the farm Olifantskop No. 425—K.Q. to the north-eastern beacon (midstream Crocodile River) thereof; thence in a south-easterly direction along an imaginary line in the middle of the Crocodile River and including the remaining extent of portion B of the farm Olifantskop No. 425—K.Q. to a point in the middle of the Crocodile River; thence in a southerly direction and including the remaining extent of portion B of the farm Olifantskop No. 425—K.Q. to the south-eastern beacon thereof; thence in a south-westerly direction along the southern boundary of and including the remaining extent of portion B of the farm Olifantskop No. 425—K.Q. to the north-eastern beacon of the remaining extent of the said farm; thence in a south-easterly direction along the eastern boundary of and including the remaining extent of the farm Olifantskop No. 425—K.Q. to the south-eastern beacon thereof; thence in a south-westerly direction along the southern boundary of and including the remaining extent of the farm Olifantskop No. 425—K.Q. to the south-western beacon thereof, the point of commencement.

**OLIFANTSKOP-PRIVAATNATUURRESERVAAT.  
OLIFANTSKOP PRIVATE NATURE RESERVE.**



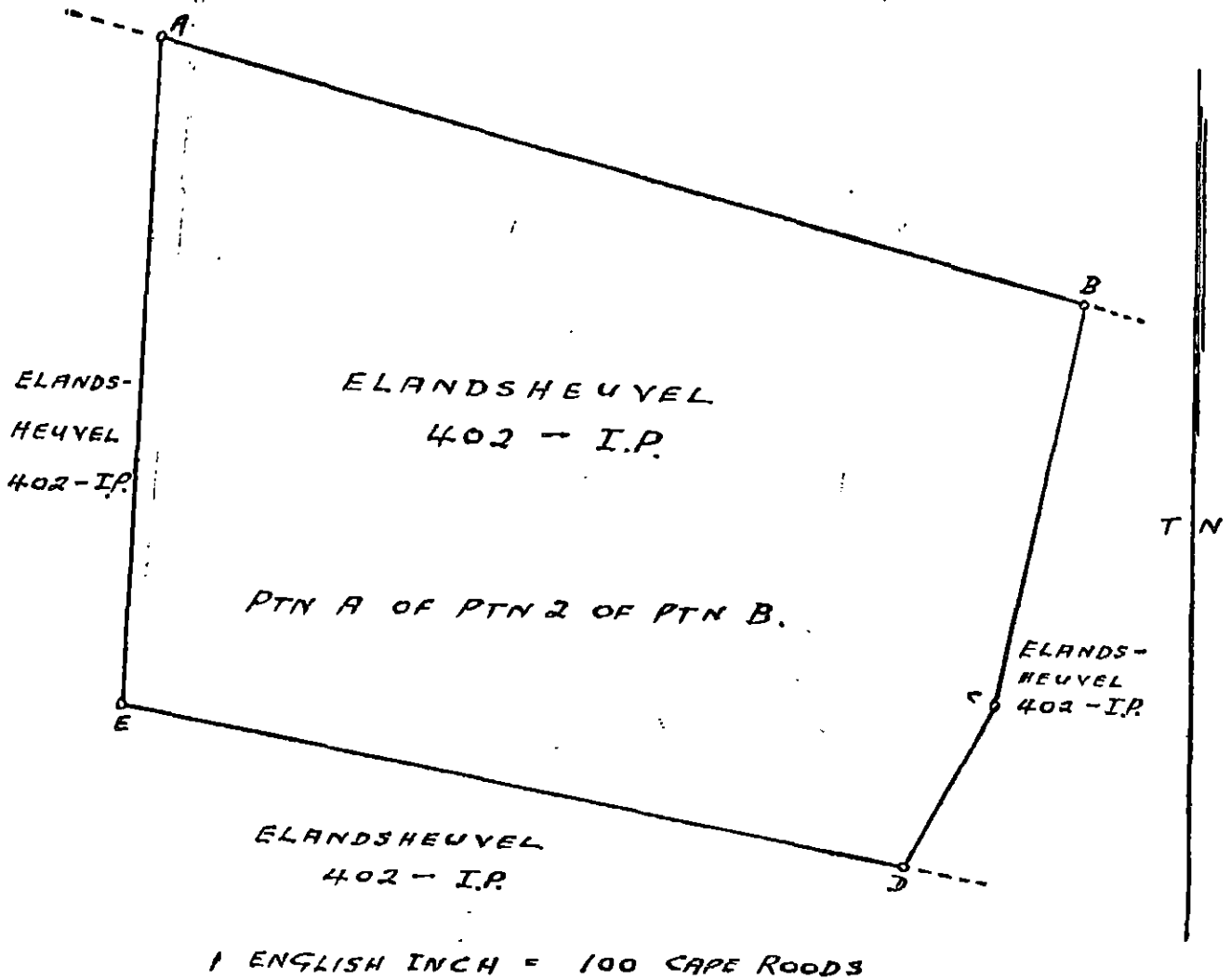
**NORTH HILLS-PRIVAATNATUURRESERVAAT,  
DISTRIK KLERKSDORP.  
(Grootte: 295 morg.)**

Die reservaat bestaan uit gedeelte a van daardie gedeelte (2) van gedeelte B van die plaas Elandsheuvel No. 402—I.P. met 'n grootte van 295 morg 109 vierkante roedes in die distrik Klerksdorp soos voorgestel in die tekening onder geletter A.B.C.D.E.

**NORTH HILLS PRIVATE NATURE RESERVE,  
DISTRICT OF KLERKSDORP.  
(Extent: 295 morgen.)**

The reserve comprises portion a of that portion (2) of portion B of the farm Elandsheuvel No. 402—I.P. in extent 295 morgen 109 square roods in the district of Klerksdorp as represented in the figure below lettered A.B.C.D.E.

**NORTH HILLS-PRIVAATNATUURRESERVAAT.  
NORTH HILLS PRIVATE NATURE RESERVE.**





**BLESBOKFONTEIN-PRIVAATNATUUR-RESERVAAT, DISTRIK PIETERSBURG.**

(Grootte: 300 morg.)

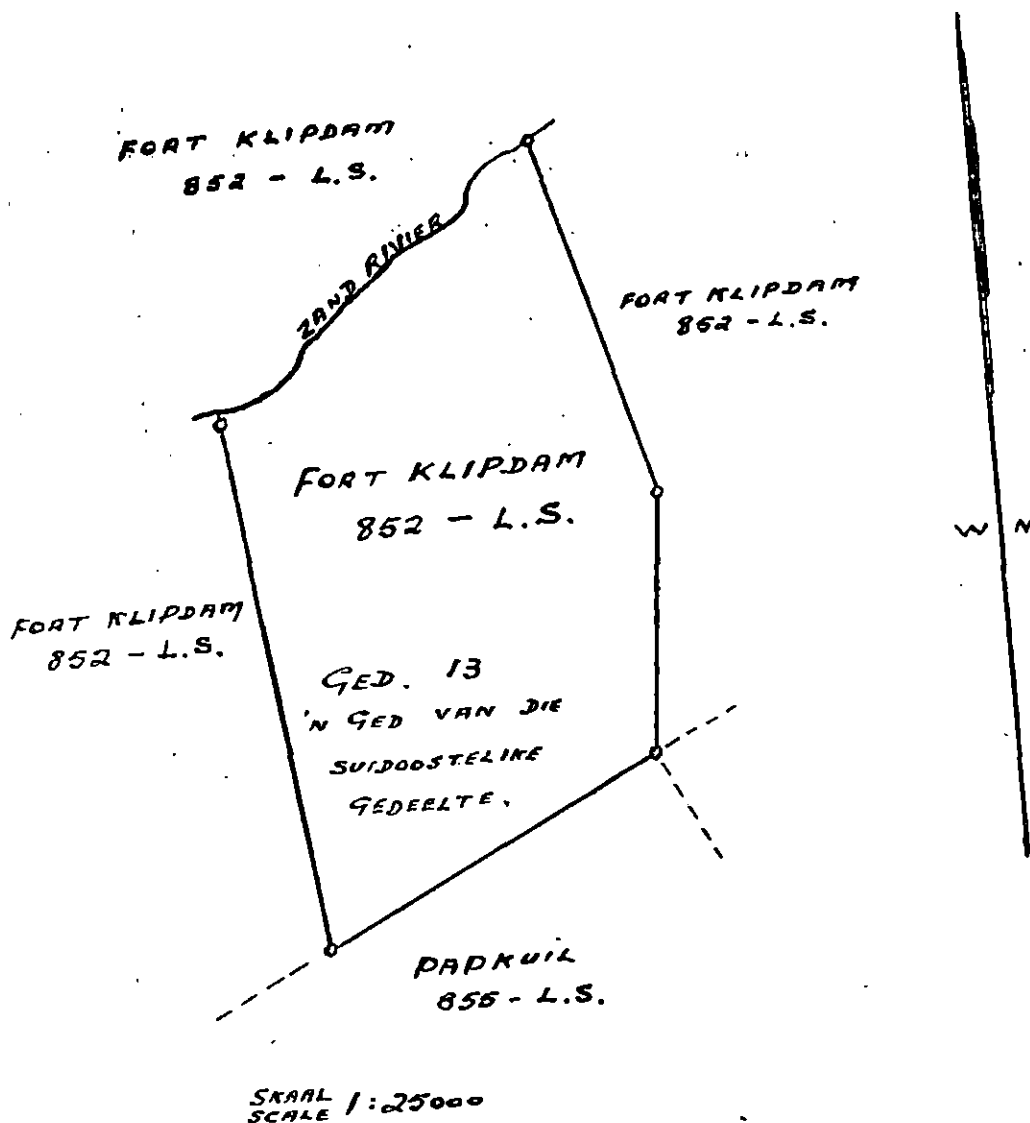
Beginnende by die suidwestelike baken van gedeelte 13 ('n gedeelte van die suidoostelike gedeelte) van die plaas Fort Klipdam No. 852—L.S., van daar in 'n noordwestelike rigting langs die westelike grens en met inbegrip van gedeelte 13 van die plaas Fort Klipdam No. 852—L.S. tot by die noordwestelike baken (middel van Zandrivier) daarvan; van daar in 'n noordoostelike rigting langs 'n denkbeeldige lyn in die middel van die Zandrivier en met inbegrip van gedeelte 13 van die plaas Fort Klipdam No. 852—L.S. tot by die noordoostelike baken (middel van Zandrivier) daarvan; van daar in 'n suidoostelike rigting langs die oostelike grens en met inbegrip van gedeelte 13 van die plaas Fort Klipdam No. 852—L.S. tot by die oostelike baken daarvan; van daar in 'n suidwestelike rigting langs die oostelike grens en met inbegrip van gedeelte 13 van die plaas Fort Klipdam No. 852—L.S. tot by die suidoostelike baken daarvan; van daar in 'n suidwestelike rigting langs die suidelike grens en met inbegrip van gedeelte 13 van die plaas Fort Klipdam No. 852—L.S. tot by die suidwestelike baken daarvan, die aanvangspunt.

**BLESBOKFONTEIN PRIVATE NATURE RESERVE, DISTRICT OF PIETERSBURG.**

(Extent: 300 morgen.)

Commencing at the south-western beacon of portion 13 (a portion of the south-eastern portion) of the farm Fort Klipdam No. 852—L.S.; thence in a north-westerly direction along the western boundary of and including portion 13 of the farm Fort Klipdam No. 852—L.S. to the north-western beacon (midstream Zand River) thereof; thence in a north-easterly direction along an imaginary line in the middle of the Zand River and including portion 13 of the farm Fort Klipdam No. 852—L.S. to the north-eastern beacon (midstream Zand River) thereof; thence in a south-easterly direction along the eastern boundary of and including portion 13 of the farm Fort Klipdam No. 852—L.S. to the eastern beacon thereof; thence in a south-westerly direction along the eastern boundary of and including portion 13 of the farm Fort Klipdam No. 852—L.S. to the south-eastern beacon thereof; thence in a south-westerly direction along the southern boundary of and including portion 13 of the farm Fort Klipdam No. 852—L.S. to the south-western beacon thereof, the point of commencement.

**BLESBOKFONTEIN-PRIVAATNATUURRESERVAAT.  
BLESBOKFONTEIN PRIVATE NATURE RESERVE.**



**W. W. BEZUIDENHOUT-PRIVAATNATUUR-RESERVAAT, DISTRIK POTGIETERSRUS.**

(Grootte: 2,588 morg.)

Beginnende by die suidwestelike baken van die plaas Doornpoort No. 578—K.S.; van daar in 'n noordwestelike rigting langs die westelike grens en met inbegrip van die plaas Doornpoort No. 578—K.S. tot by die noordwestelike baken daarvan; van daar in 'n noordoostelike rigting langs die noordelike grens en met inbegrip van die plaas Doornpoort No. 578—K.S. tot by die noordoostelike baken daarvan; van daar in 'n noordoostelike rigting langs die noordelike grens en met inbegrip van die resterende gedeelte van die plaas Klipheuwel No. 573—K.S. tot by die noordoostelike baken daarvan; van daar in 'n suidoostelike rigting langs die oostelike grens en met inbegrip van die resterende gedeelte van die plaas Klipheuwel No. 573—K.S. tot by baken C; van daar in 'n oostelike rigting in 'n reguit lyn tot 'n punt in die middel van die Olifantsrivier; van daar in 'n algemene suidelike rigting langs 'n denkbeeldige lyn in die middel van die Olifantsrivier en met inbegrip van die resterende gedeelte van die plaas Klipheuwel No. 573—K.S. tot by die suidelike baken (middel van Olifantsrivier) daarvan; van daar in 'n noordwestelike rigting langs die suidelike grens en met inbegrip van die resterende gedeelte van die plaas Klipheuwel No. 573—K.S. tot by die suidoostelike baken van die plaas Doornpoort No. 578—K.S.; van daar in 'n suidwestelike rigting langs die suidelike grens en met inbegrip van die plaas Doornpoort No. 578—K.S. tot by die suidwestelike baken daarvan, die aanvangspunt.

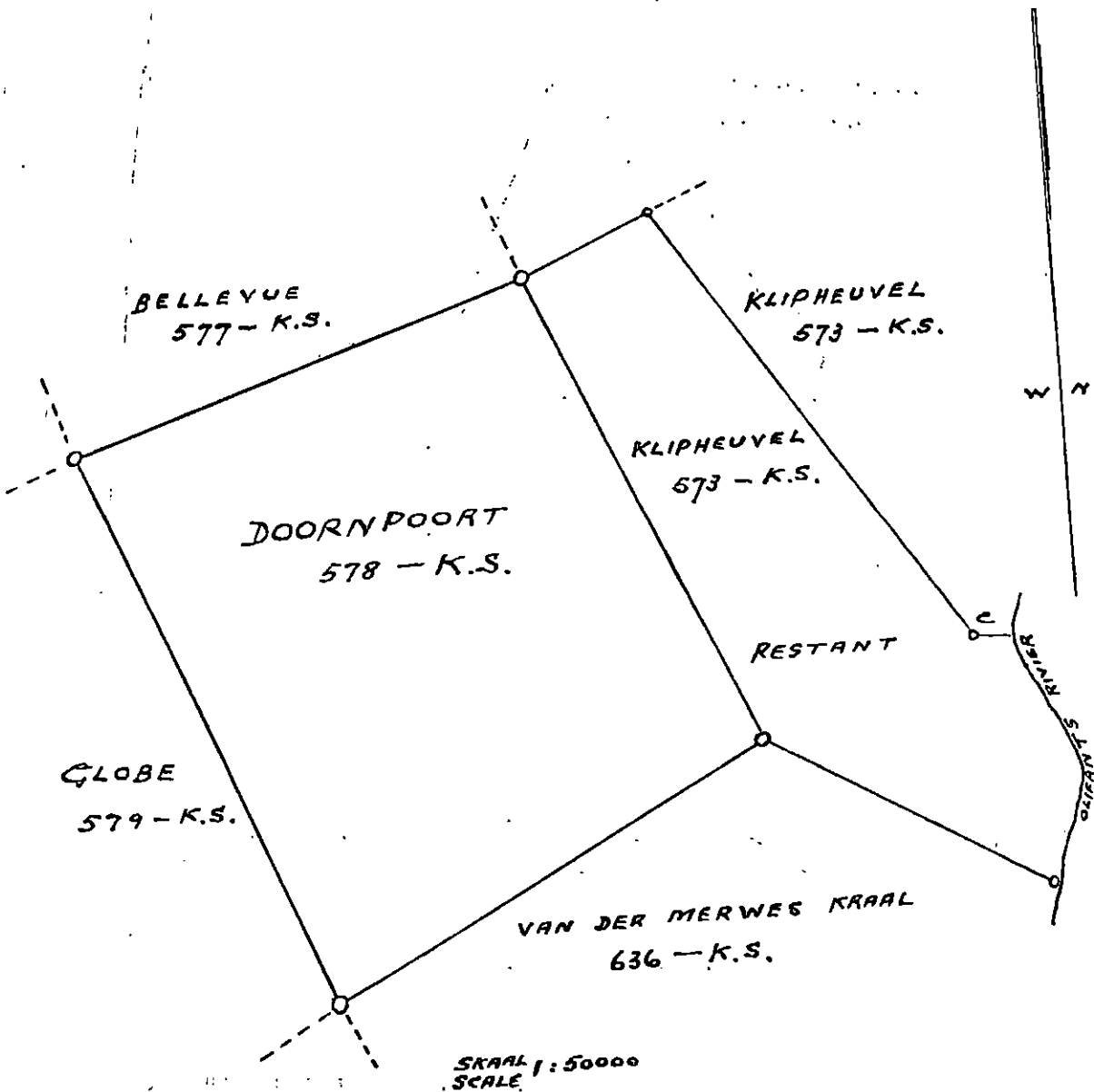
**W. W. BEZUIDENHOUT PRIVATE NATURE RESERVE, DISTRICT OF POTGIETERSRUS.**

(Extent: 2,588 morgen.)

Commencing at the south-western beacon of the farm Doornpoort No. 578—K.S.; thence in a north-westerly direction along the western boundary of and including the farm Doornpoort No. 578—K.S. to the north-western beacon thereof; thence in a north-easterly direction along the northern boundary of and including the farm Doornpoort No. 578—K.S. to the north-eastern beacon thereof; thence in a north-easterly direction along the northern boundary of and including the remaining extent of the farm Klipheuwel No. 573—K.S. to the north-eastern beacon thereof; thence in a south-easterly direction along the eastern boundary of and including the remaining extent of the farm Klipheuwel No. 573—K.S. to beacon C; thence in an easterly direction in a straight line to a point mid-stream in the Olifants River; thence generally in a southerly direction along an imaginary line in the middle of the Olifants River and including the remaining extent of the farm Klipheuwel No. 573—K.S. to the southern beacon (midstream Olifants River) thereof; thence in a north-westerly direction along the southern boundary of and including the remaining extent of the farm Klipheuwel No. 573—K.S. to the south-eastern beacon of the farm Doornpoort No. 578—K.S.; thence in a south-westerly direction along the southern boundary of and including the farm Doornpoort No. 578—K.S. to the south-western beacon thereof, the point of commencement.

**W. W. BEZUIDENHOUT-PRIVAATNATUURRESERVAAT.**

**W. W. BEZUIDENHOUT PRIVATE NATURE RESERVE.**



**KASTROL-PRIVAATNATUURRESERVAAT,  
DISTRIK RUSTENBURG.**

(Grootte: 872 morg.)

Beginnende by die suidwestelike baken van gedeelte 1 van die plaas Colchester No. 17—K.Q.; van daar in 'n noordwestelike rigting langs die westelike grens en met inbegrip van gedeelte 1 van die plaas Colchester No. 17—K.Q. tot by die noordwestelike baken daarvan; van daar in 'n noordoostelike rigting langs die noordelike grens en met inbegrip van gedeelte 1 van die plaas Colchester No. 17—K.Q. tot by die noordoostelike baken (middel van Matlabasrivier) daarvan; van daar in 'n suid-oostelike rigting langs 'n denkbeeldige lyn in die middel van die Matlabasrivier en met inbegrip van gedeelte 1 van die plaas Colchester No. 17—K.Q. tot by die suidoostelike baken (middel van Matlabasrivier) daarvan; van daar in 'n suidwestelike rigting langs die suidelike grens en met inbegrip van gedeelte 1 van die plaas Colchester No. 17—K.Q. tot by die suidwestelike baken daarvan, die aanvangspunt.

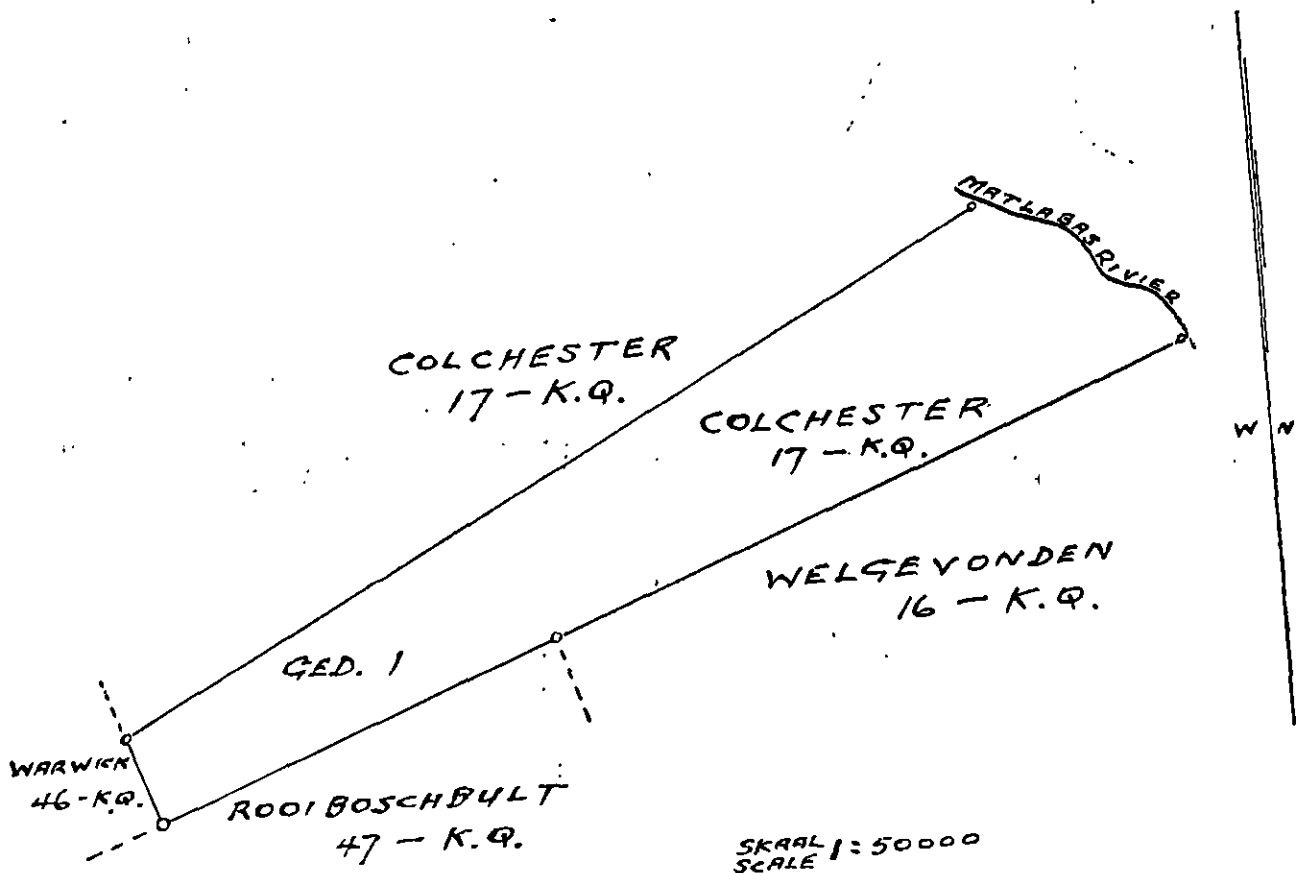
**KASTROL PRIVATE NATURE RESERVE,  
DISTRICT OF RUSTENBURG.**

(Extent: 872 morgen.)

Commencing at the south-western beacon of portion 1 of the farm Colchester No. 17—K.Q.; thence in a north-westerly direction along the western boundary of and including portion 1 of the farm Colchester No. 17—K.Q. to the north-western beacon thereof; thence in a north-easterly direction along the northern boundary of and including portion 1 of the farm Colchester No. 17—K.Q. to the north-eastern beacon (midstream Matlabas River) thereof; thence in a south-easterly direction along an imaginary line in the middle of the Matlabas River and including portion 1 of the farm Colchester No. 17—K.Q. to the south-eastern beacon (midstream Matlabas River) thereof; thence in a south-westerly direction along the southern boundary of and including portion 1 of the farm Colchester No. 17—K.Q. to the south-western beacon thereof, the point of commencement.

**KASTROL-PRIVAATNATUURRESERVAAT.**

**KASTROL PRIVATE NATURE RESERVE.**



**BLOUSLOOT-PRIVAATNATUURRESERVAAT,  
DISTRIK RUSTENBURG.**

(Grootte: 1,000 morg.)

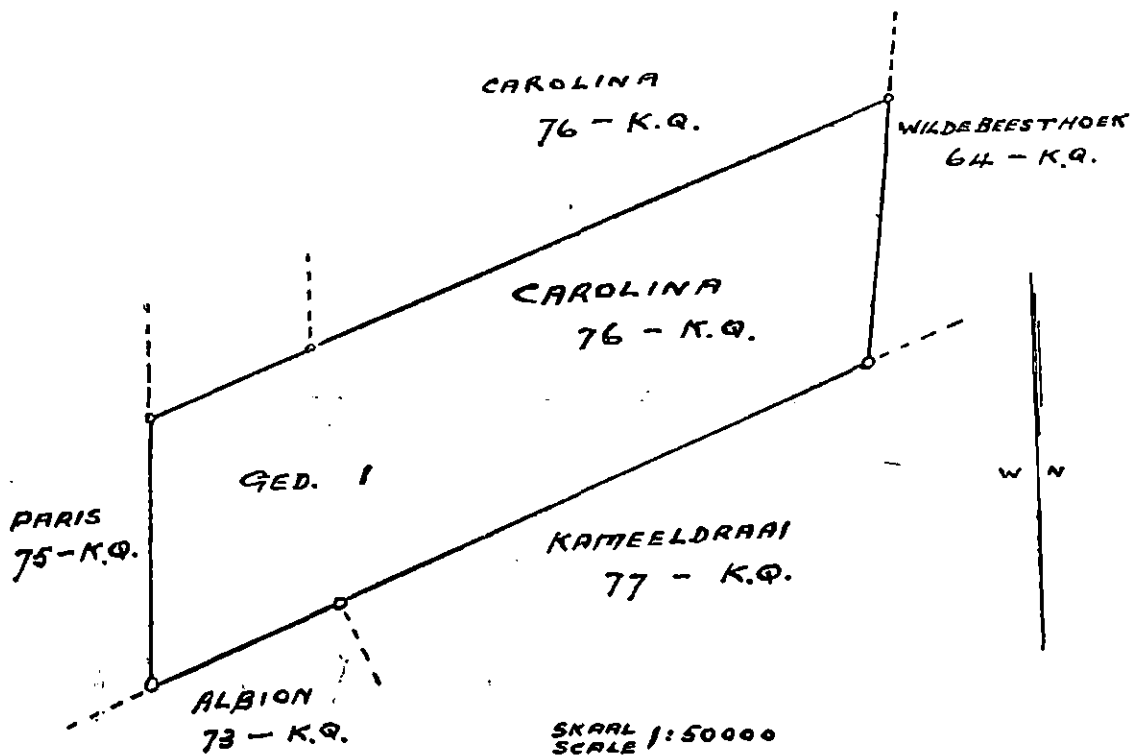
Beginnende by die suidwestelike baken van gedeelte 1 van die plaas Carolina No. 76—K.Q.; van daar in 'n noordelike rigting langs die westelike grens en met inbegrip van gedeelte 1 van die plaas Carolina No. 76—K.Q. tot by die noordwestelike baken daarvan; van daar in 'n noordoostelike rigting langs die noordelike grens en met inbegrip van gedeelte 1 van die plaas Carolina No. 76—K.Q. tot by die noordoostelike baken daarvan; van daar in 'n suidelike rigting langs die oostelike grens en met inbegrip van gedeelte 1 van die plaas Carolina No. 76—K.Q. tot by die suidoostelike baken daarvan; van daar in 'n suidwestelike rigting langs die suidelike grens en met inbegrip van gedeelte 1 van die plaas Carolina No. 76—K.Q. tot by die suidwestelike baken daarvan, die aanvangspunt.

**BLOUSLOOT PRIVATE NATURE RESERVE,  
DISTRICT OF RUSTENBURG.**

(Extent: 1,000 morgen.)

Commencing at the south-western beacon of portion 1 of the farm Carolina No. 76—K.Q.; thence in a northerly direction along the western boundary of and including portion 1 of the farm Carolina No. 76—K.Q. to the north-western beacon thereof; thence in a north-easterly direction along the northern boundary of and including portion 1 of the farm Carolina No. 76—K.Q. to the north-eastern beacon thereof; thence in a southerly direction along the eastern boundary of and including portion 1 of the farm Carolina No. 76—K.Q. to the south-eastern beacon thereof; thence in a south-westerly direction along the southern boundary of and including portion 1 of the farm Carolina No. 76—K.Q. to the south-western beacon thereof, the point of commencement.

**BLOUSLOOT-PRIVAATNATUURRESERVAAT.  
BLOUSLOOT PRIVATE NATURE RESERVE.**



**TIERKOP-PRIVAATNATUURRESERVAAT,  
DISTRIK WÁTERBERG.  
(Grootte; 7,200 morg.)**

Beginnende by die suidwestelike baken van die resterende gedeelte van die plaas Vlakvallei No. 516—L.Q.; van daar in 'n noordwestelike rigting langs die westelike grens en met inbegrip van genoemde gedeelte tot by die noordwestelike baken daarvan; van daar in 'n noordwestelike rigting langs die westelike grens en met inbegrip van die plaas Nooitgedacht No. 514—L.Q. tot by die noordwestelike baken daarvan; van daar in 'n noordoostelike rigting langs die noordelike grens en met inbegrip van die plaas Nooitgedacht No. 514—L.Q. tot by die noordoostelike baken daarvan; van daar in 'n noordwestelike rigting langs die westelike grens en met inbegrip van die plaas Kaffirsdraai No. 513—L.Q. tot by die noordwestelike baken daarvan; van daar in 'n noordoostelike rigting langs die noordelike grens en met inbegrip van die plaas Kaffirsdraai No. 513—L.Q. tot by die noordoostelike baken daarvan; van daar in 'n noordoostelike rigting langs die noordelike grens en met inbegrip van die resterende gedeelte van die plaas Kuipersbult No. 511—L.Q. tot by die noordoostelike baken daarvan; van daar in 'n suidoostelike rigting langs die oostelike grens en met inbegrip van die resterende gedeelte van die plaas Kuipersbult No. 511—L.Q. tot by die suidoostelike baken daarvan; van daar in 'n suidwestelike rigting langs die suidelike grens en met inbegrip van die resterende gedeelte van die plaas Kuipersbult No. 511—L.Q. en die plaas Kaffirsdraai No. 513—L.Q. tot by die suidwestelike baken van laasgenoemde plaas; van daar in 'n suidoostelike rigting langs die oostelike grens en met inbegrip van die plaas Nooitgedacht No. 514—L.Q. tot by die suidoostelike baken daarvan; van daar in 'n suidwestelike rigting langs die

**TIERKOP PRIVATE NATURE RESERVE,  
DISTRICT OF WATERBERG.**

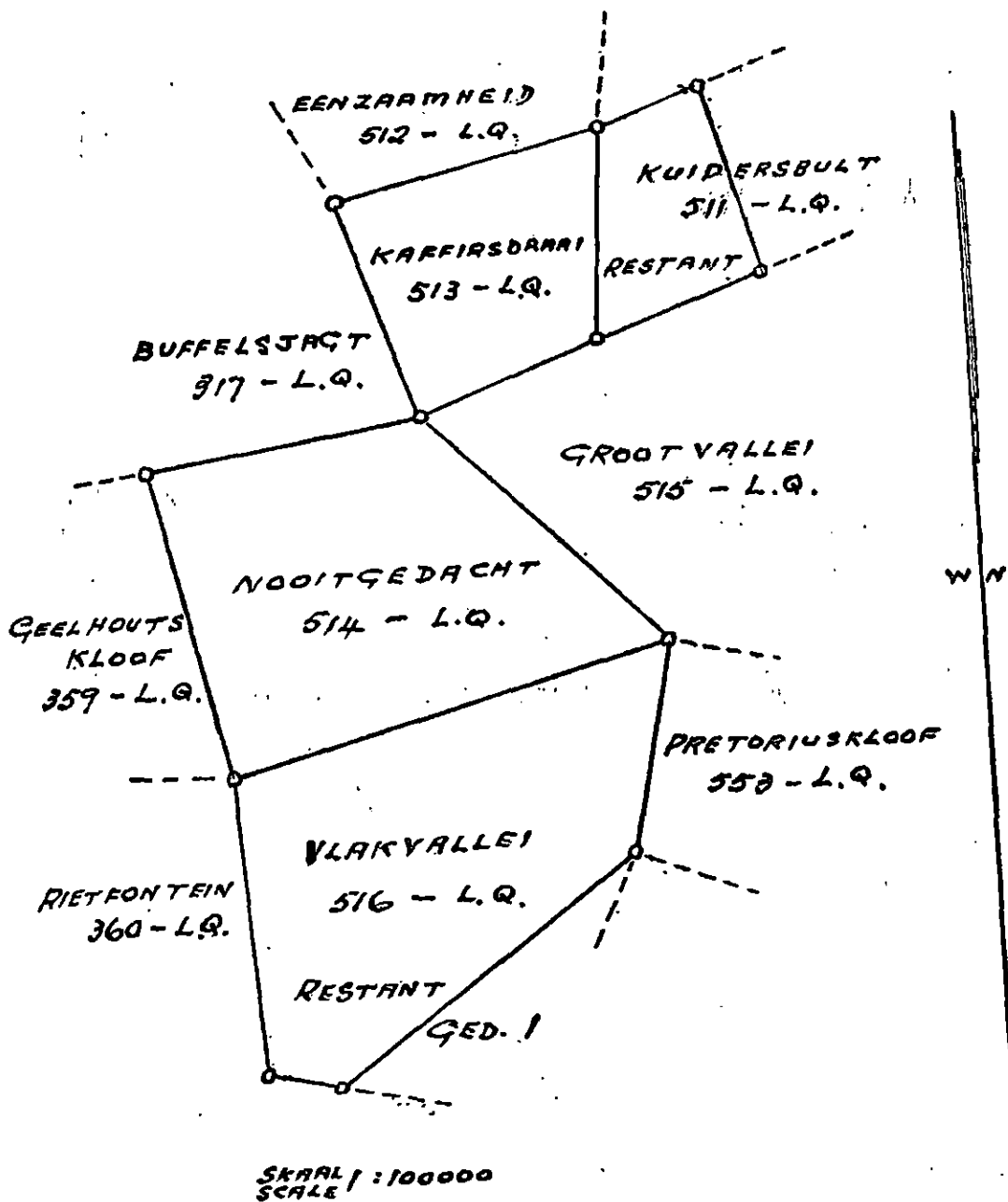
(Extent: 7,200 morgen.)

Commencing at the south-western beacon of the remaining extent of the farm Vlakvallei No. 516—L.Q.; thence in a north-westerly direction along the western boundary of and including the said portion to the north-western beacon thereof; thence in a north-westerly direction along the western boundary of and including the farm Nooitgedacht No. 514—L.Q. to the north-western beacon thereof; thence in a north-easterly direction along the northern boundary of and including the farm Nooitgedacht No. 514—L.Q. to the north-eastern beacon thereof; thence in a north-westerly direction along the western boundary of and including the farm Kaffirsdraai No. 513—L.Q. to the north-western beacon thereof; thence in a north-easterly direction along the northern boundary of and including the farm Kaffirsdraai No. 513—L.Q. to the north-eastern beacon thereof; thence in a north-easterly direction along the northern boundary of and including the remaining extent of the farm Kuipersbult No. 511—L.Q. to the north-eastern beacon thereof; thence in a south-easterly direction along the eastern boundary of and including the remaining extent of the farm Kuipersbult No. 511—L.Q. to the south-eastern beacon thereof; thence in a south-westerly direction along the southern boundary of and including the remaining extent of the farm Kuipersbult No. 511—L.Q. and the farm Kaffirsdraai No. 513—L.Q. to the south-western beacon of the last-named farm; thence in a south-easterly direction along the eastern boundary of and including the farm Nooitgedacht No. 514—L.Q. to the south-eastern beacon thereof; thence in a south-westerly direction along

oostelike grens en met inbegrip van die resterende gedeelte van die plaas Vlakvallei No. 516—L.Q. tot by die noordelike baken van gedeelte 1 van die plaas; van daar in 'n suidwestelike rigting langs die oostelike grens en met inbegrip van die resterende gedeelte van die plaas Vlakvallei No. 516—L.Q. tot by die suidoostelike baken daarvan; van daar in 'n westelike rigting langs die suidelike grens en met inbegrip van die resterende gedeelte van die plaas Vlakvallei No. 516—L.Q. tot by die suidwestelike baken daarvan, die aanvangspunt.

the eastern boundary of and including the remaining extent of the farm Vlakvallei No. 516—L.Q. to the northern beacon of portion 1 of the farm; thence in a south-westerly direction along the eastern boundary of and including the remaining extent of the farm Vlakvallei No. 516—L.Q. to the south-eastern beacon thereof; thence in a westerly direction along the southern boundary of and including the remaining extent of the farm Vlakvallei No. 516—L.Q. to the south-western beacon thereof, the point of commencement.

**TIERKOP-PRIVAATNATUURRESERVAAT.  
TIERKOP PRIVATE NATURE RESERVE.**



**BENITA-PRIVAATNATUURRESERVAAT,  
DISTRIK RUSTENBURG.**

(Grootte: 2,672 morg.)

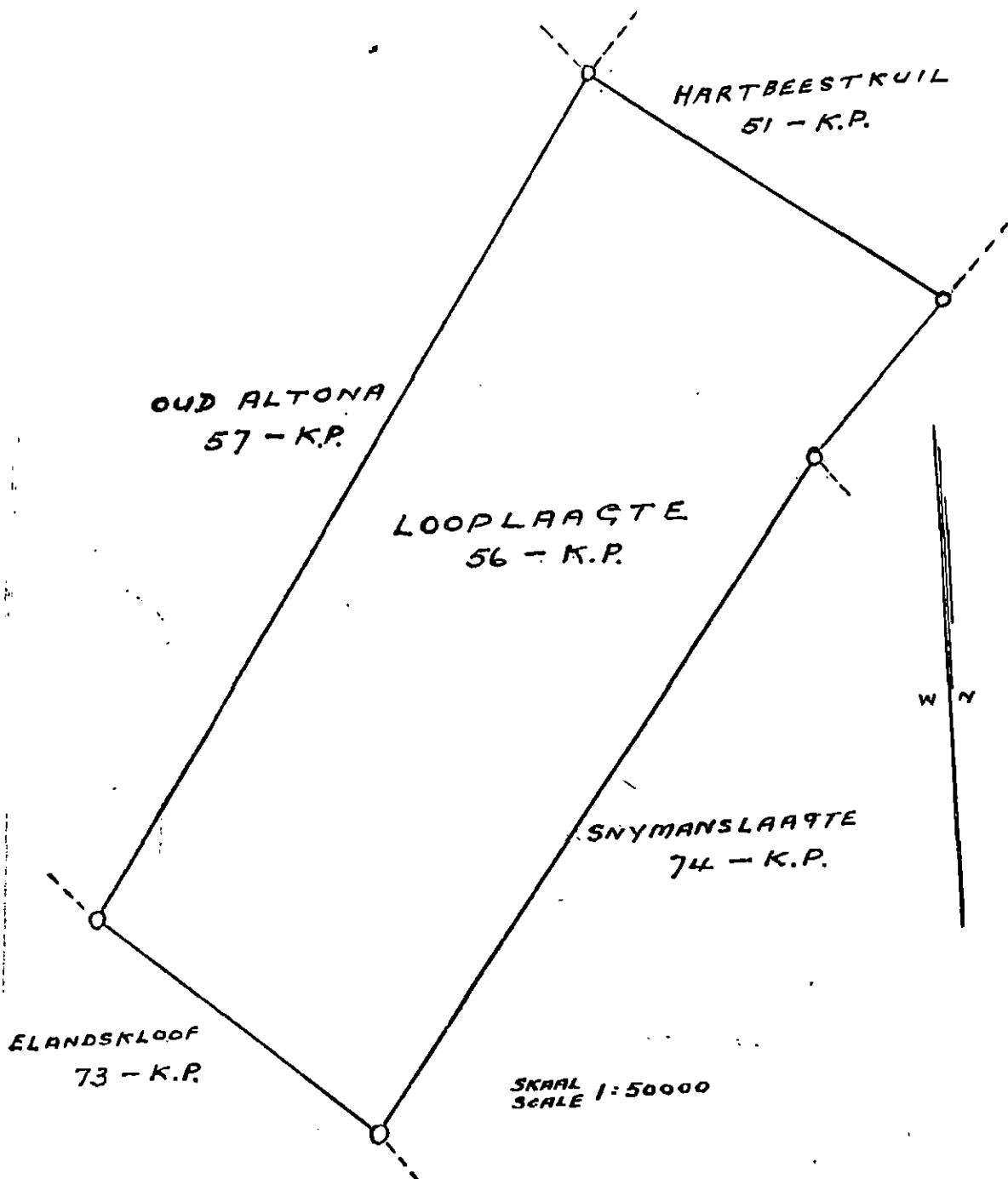
Beginnende by die suidelike baken van die plaas Looplaagte No. 56—K.P.; van daar in 'n noordwestelike rigting langs die suidelike grens en met inbegrip van die plaas Looplaagte No. 56—K.P. tot by die westelike baken daarvan; van daar in 'n noordoostelike rigting langs die westelike grens en met inbegrip van die plaas Looplaagte No. 56—K.P. tot by die noordelike baken daarvan; van daar in 'n suidoostelike rigting langs die noordelike grens en met inbegrip van die plaas Looplaagte No. 56—K.P. tot by die oostelike baken daarvan; van daar in 'n suidwestelike rigting langs die oostelike grens en met inbegrip van die plaas Looplaagte No. 56—K.P. tot by die suidelike baken daarvan, die aanvangspunt.

**BENITA PRIVATE NATURE RESERVE,  
DISTRICT OF RUSTENBURG.**

(Extent: 2,672 morgen.)

Commencing at the southern beacon of the farm Looplaagte No. 56—K.P.; thence in a north-westerly direction along the southern boundary of and including the farm Looplaagte No. 56—K.P. to the western beacon thereof; thence in a north-easterly direction along the western boundary of and including the farm Looplaagte No. 56—K.P. to the northern beacon thereof; thence in a south-easterly direction along the northern boundary of and including the farm Looplaagte No. 56—K.P. to the eastern beacon thereof; thence in a south-westerly direction along the eastern boundary of and including the farm Looplaagte No. 56—K.P. to the southern beacon thereof, the point of commencement.

**BENITA-PRIVAATNATUURRESERVAAT.  
BENITA PRIVATE NATURE RESERVE.**



**KLIPPLAAT-PRIVAATNATUURRESERVAAT,  
DISTRIK RUSTENBURG.**

(Grootte: 660 morg.)

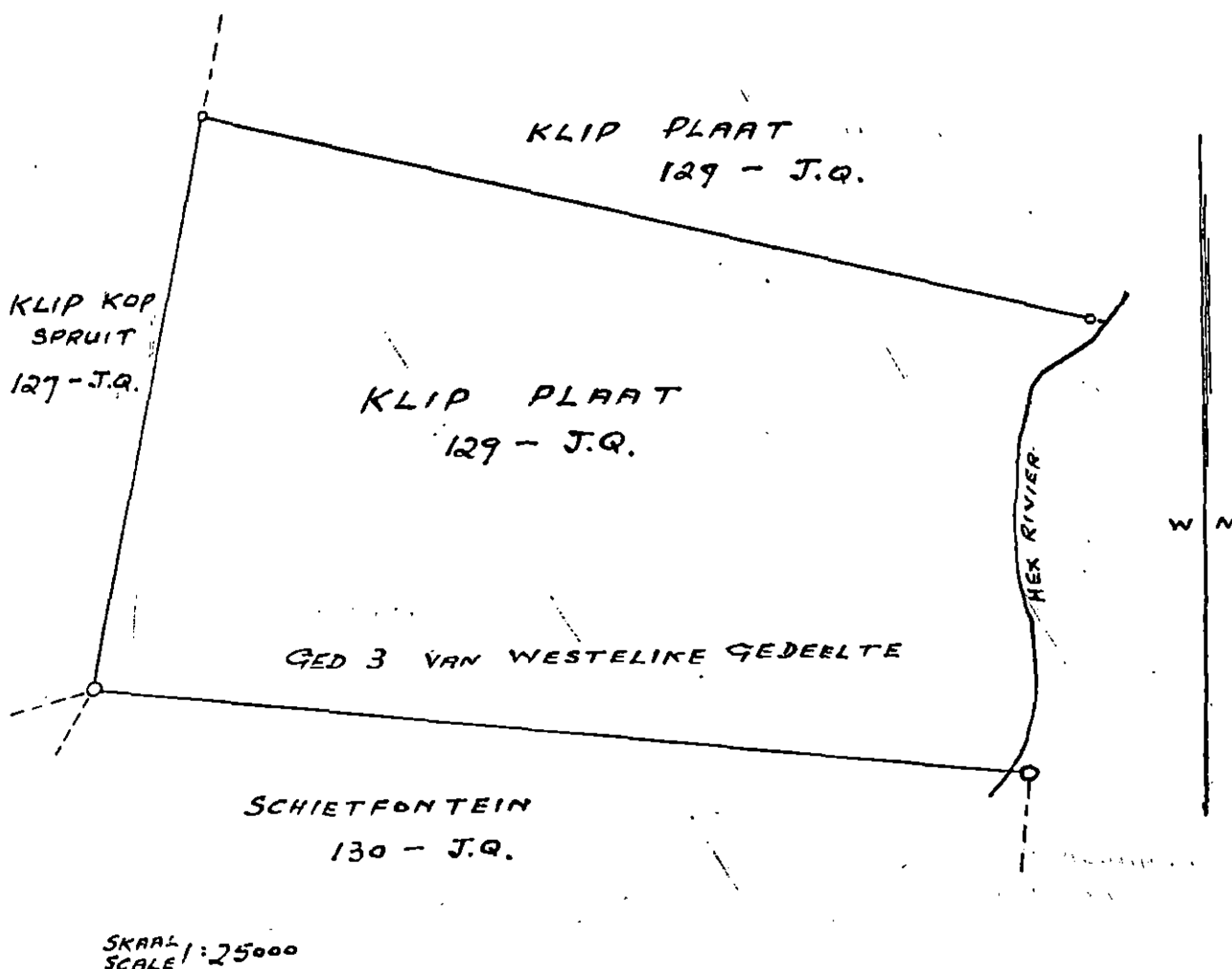
Beginnende by die suidwestelike baken van gedeelte 3 van die westelike gedeelte van die plaas Klip Plaat No. 129—J.Q.; van daar in 'n noordoostelike rigting langs die westelike grens en met inbegrip van gedeelte 3 van die westelike gedeelte van die plaas Klip Plaat No. 129—J.Q. tot by die noordwestelike baken daarvan; van daar in 'n suidoostelike rigting langs die noordelike grens en met inbegrip van gedeelte 3 van die westelike gedeelte van die plaas Klip Plaat No. 129—J.Q. tot by die noordoostelike baken (middel van Hex-rivier) daarvan; van daar in 'n suidelike rigting langs 'n denkbeeldige lyn in die middel van die Hex-rivier en met inbegrip van gedeelte 3 van die westelike gedeelte van die plaas Klip Plaat No. 129—J.Q. tot by die suidoostelike baken (middel van Hex-rivier) daarvan; van daar in 'n noordwestelike rigting langs die suidelike grens en met inbegrip van gedeelte 3 van die westelike gedeelte van die plaas Klip Plaat No. 129—J.Q. tot by die suidwestelike baken daarvan, die aanvangspunt.

**KLIPPLAAT PRIVATE NATURE RESERVE,  
DISTRICT OF RUSTENBURG.**

(Extent: 660 morgen.)

Commencing at the south-western beacon of portion 3 of the western portion of the farm Klip Plaat No. 129—J.Q.; thence in a north-easterly direction along the western boundary of and including portion 3 of the western portion of the farm Klip Plaat No. 129—J.Q. to the north-western beacon thereof; thence in a south-easterly direction along the northern boundary of and including portion 3 of the western portion of the farm Klip Plaat No. 129—J.Q. to the north-eastern beacon (midstream Hex River) thereof; thence in a southerly direction along an imaginary line in the middle of the Hex River and including portion 3 of the western portion of the farm Klip Plaat No. 129—J.Q. to the south-eastern beacon (midstream Hex River) thereof; thence in a north-westerly direction along the southern boundary of and including portion 3 of the western portion of the farm Klip Plaat No. 129—J.Q. to the south-western beacon thereof, the point of commencement.

**KLIPPLAAT-PRIVAATNATUURRESERVAAT.  
KLIPPLAAT PRIVATE NATURE RESERVE.**



**DE VOOGD-PRIVAATNATUURRESERVAAT,  
DISTRIK SOUTPANSBERG.**

(Grootte: 1,100 morg.)

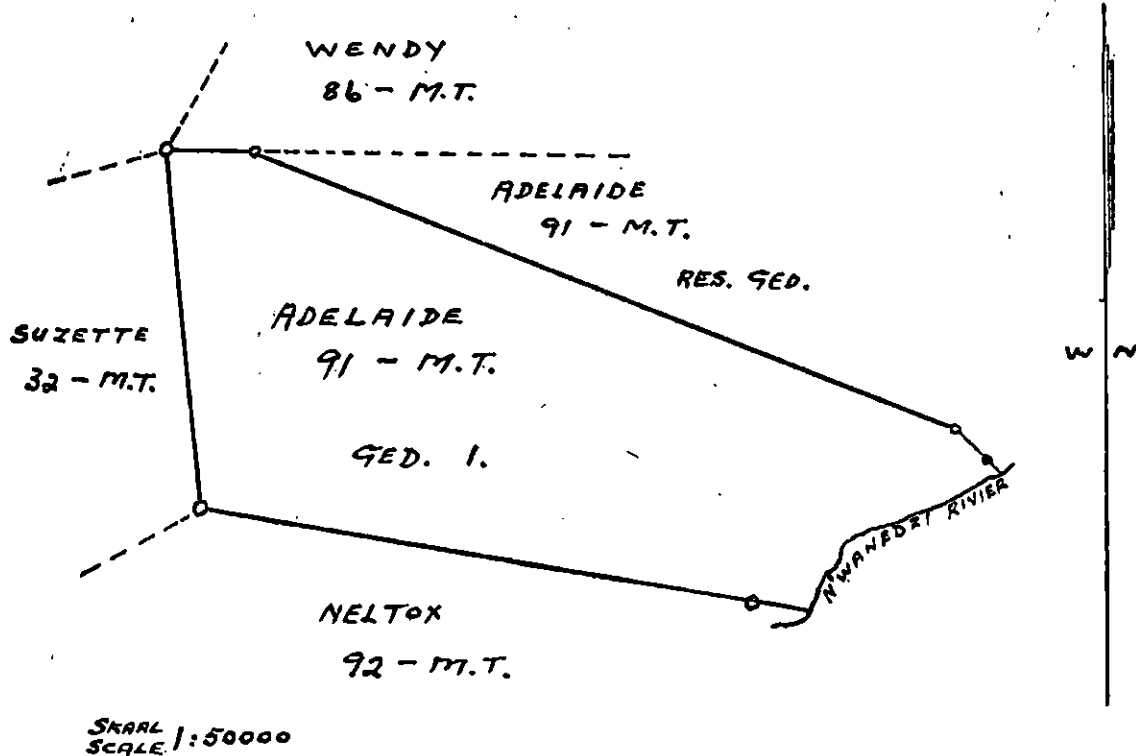
Beginnende by die suidwestelike baken van gedeelte 1 van die plaas Adelaide No. 91—M.T.; van daar in 'n noordwestelike rigting langs die westelike grens en met inbegrip van gedeelte 1 van die plaas Adelaide No. 91—M.T. tot by die noordwestelike baken daarvan; van daar in 'n oostelike rigting langs die noordelike grens en met inbegrip van gedeelte 1 van die plaas Adelaide No. 91—M.T. tot by die westelike baken van die resterende gedeelte van genoemde plaas; van daar in 'n suidoostelike, suidoostelike rigting langs die noordelike grens en met inbegrip van gedeelte 1 van die plaas Adelaide No. 91—M.T. tot by die oostelike baken (middel van N'wanedzi-rivier) daarvan; van daar in 'n suidwestelike rigting langs 'n denkbeeldige lyn in die middel van die N'wanedzi-rivier en met inbegrip van gedeelte 1 van die plaas Adelaide No. 91—M.T. tot by die suidoostelike baken (middel van N'wanedzi-rivier) daarvan; van daar in 'n noordwestelike rigting langs die suidelike grens en met inbegrip van gedeelte 1 van die plaas Adelaide No. 91—M.T. tot by die suidwestelike baken daarvan, die aanvangspunt.

**DE VOOGD PRIVATE NATURE RESERVE,  
DISTRICT SOUTPANSBERG.**

(Extent: 1,100 morgen.)

Commencing at the south-western beacon of portion 1 of the farm Adelaide No. 91—M.T.; thence in a north-westerly direction along the western boundary of and including portion 1 of the farm Adelaide No. 91—M.T. to the north-western beacon thereof; thence in an easterly direction along the northern boundary of and including portion 1 of the farm Adelaide No. 91—M.T. to the western beacon of the remaining extent of the said farm; thence in a south-easterly, south-easterly direction along the northern boundary of and including portion 1 of the farm Adelaide No. 91—M.T. to the north-eastern beacon (midstream N'wanedzi River) thereof; thence in a south-westerly direction along an imaginary line in the middle of the N'wanedzi River and including portion 1 of the farm Adelaide No. 91—M.T. to the south-eastern beacon (midstream N'wanedzi River) thereof; thence in a north-westerly direction along the southern boundary of and including portion 1 of the farm Adelaide No. 91—M.T. to the south-western beacon thereof, the point of commencement.

**DE VOOGD-PRIVAATNATUURRESERVAAT.  
DE VOOGD PRIVATE NATURE RESERVE.**



**SHARMÉ-PRIVAATNATUURRESERVAAT,  
DISTRIK RUSTENBURG.**

(Grootte: 2,542 morg.)

Beginnende by die suidwestelike baken van die plaas Vlakplaats No. 427—K.Q.; van daar in 'n noordwestelike rigting langs die westelike grens en met inbegrip van die plaas Vlakplaats No. 427—K.Q. tot by die noordwestelike baken daarvan; van daar in 'n noordoostelike rigting langs die noordelike grens en met inbegrip van die plaas Vlakplaats No. 427—K.Q. tot by die noordoostelike baken daarvan; van daar in 'n suidoostelike rigting langs die oostelike grens en met inbegrip van die plaas Vlakplaats No. 427—K.Q. tot by die suidoostelike baken daarvan; van daar in 'n suidwestelike rigting langs die suidelike grens en met inbegrip van die plaas Vlakplaats No. 427—K.Q. tot by die suidwestelike baken daarvan, die aanvangspunt.

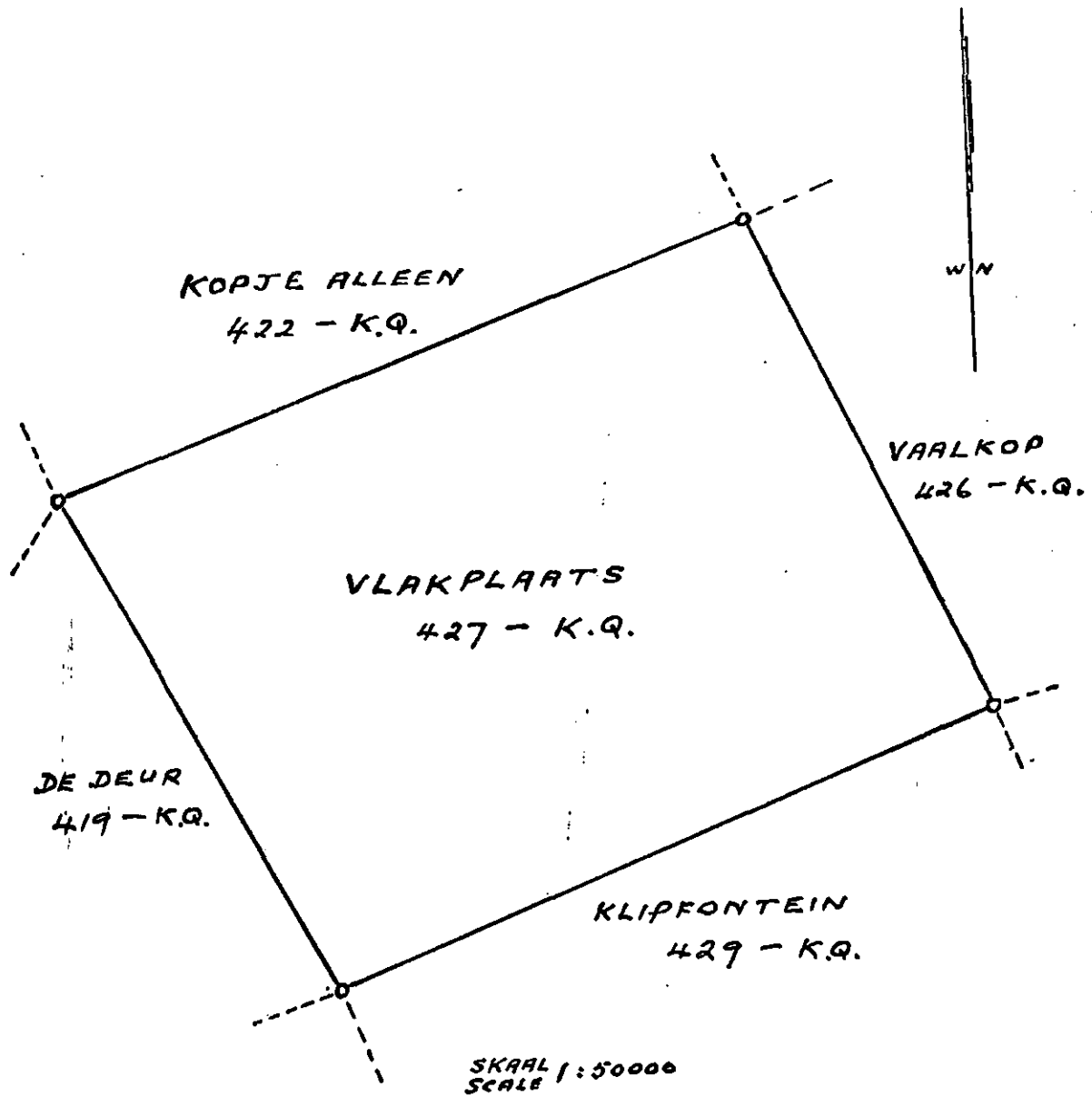
**SHARMÉ PRIVATE NATURE RESERVE,  
DISTRICT OF RUSTENBURG.**

(Extent: 2,542 morgen.)

Commencing at the south-western beacon of the farm Vlakplaats No. 427—K.Q.; thence in a north-westerly direction along the western boundary of and including the farm Vlakplaats No. 427—K.Q. to the north-western beacon thereof; thence in a north-easterly direction along the northern boundary of and including the farm Vlakplaats No. 427—K.Q. to the north-eastern beacon thereof; thence in a south-easterly direction along the eastern boundary of and including the farm Vlakplaats No. 427—K.Q. to the south-eastern beacon thereof; thence in a south-westerly direction along the southern boundary of and including the farm Vlakplaats No. 427—K.Q. to the south-western beacon thereof, the point of commencement.



**SHARMÉ-PRIVAATNATUURRESERVAAT.  
SHARMÉ PRIVATE NATURE RESERVE.**



**BYLAE B.**

Naam.	Grootte.	Distrik.	Proklamasieno.
1. Schulenburg- privaatna- tuurreservaat	4,721 morg	Soutpansberg	No. 229 van 1956.
2. Mary Lavin- privaatna- tuurreservaat No. 1	2,965 morg	Soutpansberg	No. 53 van 1958.
3. Mary Lavin- privaatna- tuurreservaat No. 2	2,849 morg	Soutpansberg	No. 53 van 1958.
4. Mary Lavin- privaatna- tuurreservaat No. 3	1,674 morg	Soutpansberg	No. 53 van 1958.

**SCHEDULE B.**

Name.	Extent.	District.	Proclamation No.
1. Schulenburg Private Nature Reserve	4,721 morgen	Soutpansberg	No. 229 of 1956.
2. Mary Lavin Private Nature Reserve No. 1	2,965 morgen	Soutpansberg	No. 53 of 1958.
3. Mary Lavin Private Nature Reserve No. 2	2,849 morgen	Soutpansberg	No. 53 of 1958.
4. Mary Lavin Private Nature Reserve No. 3	1,674 morgen	Soutpansberg	No. 53 of 1958.

# DIT BETAAL U OM TE SPAAR!

## SPAAR

- ★ VIR U FAMILIE SE TOEKOMS!
- ★ VIR U EIE HUIS!
- ★ VIR U AFTREDE!
- ★ VIR ALLE GEVALLE VAN NOOD!

### POSSPAARBANK

Die Posspaarbank verdien 3% rente op die maandelikse balans, waarvan tot R100 per jaar van die rente van *Inkomstebelasting Vrygestel* is.

Die eerste belegging hoef nie meer as 10c te wees nie. So 'n rekening is baie handig in tye van nood of wanneer met vakansie, omdat stortings en terugvorderings by enige Poskantoor in die Unie gedoen kan word.

Nie meer as R4,000 mag gedurende 'n boekjaar deur een persoon ingelê word nie.

# IT PAYS YOU WELL TO SAVE!

## SAVE

- ★ FOR YOUR FAMILY'S FUTURE!
- ★ FOR YOUR OWN HOME!
- ★ FOR YOUR RETIREMENT!
- ★ FOR ALL EMERGENCIES!

### POST OFFICE SAVINGS BANK

The Post Office Savings Bank earns 3% interest on the monthly balance, of which interest up to R100 per annum is *Free of Income Tax*.

The first deposit need to be no more than 10c. Such an account is very handy in times of emergency or when on holiday, as deposits or withdrawals can be made at any Post Office in the Union.

Not more than R4,000 may be deposited by one person during a financial year.

# Publikasies

wat deur die STAATSDRUKKER uitgegee word, handel oor 'n verskeidenheid van onderwerpe wat vir Boere, Prokureurs, Onderwysers, Besigheidsmense, Nyweraars en die Algemene Publiek van groot belang is

Hierdie publikasies sluit die volgende in:—

- |  |                     |   |
|--|---------------------|---|
| <ul style="list-style-type: none"> <li>★ Offisiële Jaarboek van die Unie van Suid-Afrika</li> <li>★ Gedenkwaardighede van Suid-Afrika</li> <li>★ Die Afrikaanse Woordeboek</li> <li>★ Blomplante van Suid-Afrika</li> <li>★ Argiefjaarboek van Suid-Afrikaanse Geskiedenis</li> <li>★ Handel en Nywerheid (<i>Maandeliks</i>)</li> </ul> | <p><b>Asook</b></p> | <ul style="list-style-type: none"> <li>Geologiese Publikasies</li> <li>Wette en Regulasies</li> <li>Landkaarte</li> <li>Statistiese Verslae</li> <li>Loonvasstellings</li> <li>Gekose Komitee Verslae</li> <li>Departementele Verslae (<i>Jaarliks</i>)</li> <li>Kommissie Verslae, ens.</li> </ul> |
|--|---------------------|---|

Verdere besonderhede en pryse aangaande hierdie publikasies is verkrygbaar van die STAATSDRUKKER, -Pretoria of Kaapstad

# Publications

issued by the GOVERNMENT PRINTER deal with various subjects of great interest to Businessmen, Industrialists, Farmers, Attorneys, Teachers and the Public in General

These publications include the following:—

- |   |                    |   |
|---|--------------------|---|
| <ul style="list-style-type: none"> <li>★ Official Year Book of the Union of South Africa</li> <li>★ The Monuments of South Africa</li> <li>★ Die Afrikaanse Woordeboek</li> <li>★ Flowering Plants of Africa</li> <li>★ Archives Year Book for South African History</li> <li>★ Commerce and Industry (<i>Monthly</i>)</li> </ul> | <p><b>Also</b></p> | <ul style="list-style-type: none"> <li>Geological Publications</li> <li>Acts and Regulations</li> <li>Maps</li> <li>Statistical Reports</li> <li>Wage Determinations</li> <li>Reports of Select Committees</li> <li>Departmental Reports (<i>Annual</i>)</li> <li>Commission Reports, etc.</li> </ul> |
|---|--------------------|---|

Further particulars regarding these publications and prices are obtainable from the GOVERNMENT PRINTER, Pretoria or Cape Town

*Maak gebruik van die...*

## Posspaarbank!

Die veiligheid van u geld word deur die Staat gewaarborg en u is verseker van streng geheimhouding en ongeëwenaarde diens in verband met inlaes en opvragings

Die rente op inlaes in gewone rekening is  
3% per jaar

Op bedrae wat in Spaarbanksertifikate belê word, is die rente 4% per jaar

R20,000 kan in Spaarbanksertifikate belê word

**OPEN VANDAG 'N REKENING!**

*Use the...*

## Post Office Savings Bank

which provides

state security; strict secrecy and unrivalled facilities for deposits and withdrawals

Deposits in ordinary accounts earn interest at  
3% per annum

Amounts invested in Savings Bank Certificates  
earn 4% per annum

R20,000 may be invested in Savings Bank Certificates

**OPEN AN ACCOUNT TODAY!**