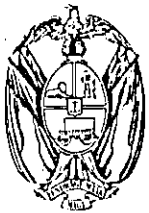




THE PROVINCE OF THE TRANSVAAL  
DIE PROVINSIE TRANSVAAL



# Official Gazette Extraordinary Buitengewone Offisiële Koerant

Selling price: R1,30 ◊ Other countries R1,70  
Verkoopprijs: R1,30 ◊ Buitelands R1,70

Vol. 236

PRETORIA, 6 JULY 1993  
PRETORIA, 6 JULIE 1993

No. 4924

## ADMINISTRATOR'S NOTICE

Administrator's Notice 310 6 July 1993

BLACK LOCAL AUTHORITIES ACT, 1982  
(ACT No. 102 OF 1982)

DEFINING OF AN AREA OUTSIDE A LOCAL AUTHORITY AREA AS CONTEMPLATED IN SECTION 2 (11) OF THE BLACK LOCAL AUTHORITIES ACT, 1982 (ACT No. 102 OF 1982)

I, Daniël Jacobus Hough, Administrator of the Province of the Transvaal, by virtue of powers vested in me by section 2 (11) of the Black Local Authorities Act, 1982 (Act No. 102 of 1982), hereby declare the areas mentioned in the Schedule hereto as defined areas.

**D. J. HOUGH,**

Administrator of the Province of the Transvaal.

### SCHEDULE

1. Dobsonville Gardens, 73,5793 ha in extent, as shown on SG Diagram No. 4525/90;
2. Doornkop Proper, 89,4255 ha in extent, as shown on SG Diagram No. 2911/67;
3. Doornkop X1, in extent of 83,6292 ha, as shown on SG Diagram No. 647/49;
4. Protea Glen Proper, 69,3087 ha in extent, as shown on SG Diagram No. 7515/90;
5. Protea Glen X1, 91,9012 ha in extent, as shown on SG Diagram No. 2215/90;
6. Protea Glen X2, 74,1931 ha in extent, as shown on SG Diagram No. 4005/91;
7. Durban Roodepoort Deep X1, 132,7278 ha in extent, as shown on SG Diagram No. 1617/91;
8. Durban Roodepoort Deep X2, 65,9461 ha in extent, as shown on SG Diagram No. 1406/91;
9. Portion 41 of the farm Doornkop 239 IQ, 25,696 ha in extent, as shown on SG Diagram No. 7632/92;

6590048—A

## ADMINISTRATEURSKENNISGEWING

Administrateurskennisgewing 310 6 Julie 1993

WET OP SWART PLAASLIKE OWERHEDE, 1982  
(WET No. 102 VAN 1982)

OMSKRYWING VAN 'N GEBIED BUITE 'N PLAASLIKE OWERHEIDSGEBIED SOOS BEOOG BY ARTIKEL 2 (11) VAN DIE WET OP SWART PLAASLIKE OWERHEDE, 1982 (WET No. 102 VAN 1982)

Ek, Daniël Jacobus Hough, Administrateur van die provinsie Transvaal, kragtens die bevoegdheid my verleen by artikel 2 (11) van die Wet op Swart Plaaslike Owerhede, 1982 (Wet No. 102 van 1982), verklaar hierby die gebiede in die Bylae hierby vermeld as omskrewe gebiede.

**D. J. HOUGH,**

Administrateur van Transvaal.

### BYLAE

1. Dobsonville Gardens, groot 73,5793 ha, soos aangetoon op LG Diagram No. 4525/90;
2. Doornkop Proper, groot 89,4255 ha, soos aangetoon op LG Diagram No. 2911/67;
3. Doornkop X1, groot 83,6292 ha, soos aangetoon op LG Diagram No. 647/49;
4. Protea Glen Proper, groot 69,3087 ha, soos aangetoon op LG Diagram No. 7515/90;
5. Protea Glen X1, groot 91,9012 ha, soos aangetoon op LG Diagram No. 2215/90;
6. Protea Glen X2, groot 74,1931 ha, soos aangetoon op LG Diagram No. 4005/91;
7. Durban Roodepoort Deep X1, groot 132,7278 ha, soos aangetoon op LG Diagram No. 1617/91;
8. Durban Roodepoort Deep X2, groot 65,9461 ha, soos aangetoon op LG Diagram No. 1406/91;
9. Gedeelte 41 van die plaas Doornkop 239 IQ, groot 25,696 ha, soos aangetoon op LG Diagram No. 7632/92;

4924—1

10. Re of Portion 1 of the farm Doornkop 239 IQ, 468,5242 ha in extent, as shown on SG Diagram No. 1/1887;
11. Portion 3 of the farm Klipriviersoog 299 IQ, 163,7936 ha in extent, as shown on SG Diagram No. 2514/06; and
12. Portion 4 of the farm Klipriviersoog 299 IQ, 265,9518 ha in extent, as shown on SG Diagram No. 3707/14.

10. Restant van Gedeelte 1 van die plaas Doornkop 239 IQ, groot 468,5242 ha, soos aangetoon op LG Diagram No. 1/1887;
11. Gedeelte 3 van die plaas Klipriviersoog 299 IQ, groot 163,7936 ha, soos aangetoon op LG Diagram No. 2514/06; en
12. Gedeelte 4 van die plaas Klipriviersoog 299 IQ, groot 265,9518 ha, soos aangetoon op LG Diagram No. 3707/14.

**Administrator's Notice 311****6 July 1993**

**BLACK LOCAL AUTHORITIES ACT, 1992  
(ACT No. 102 OF 1982)**

**DEFINING OF AN AREA OUTSIDE A LOCAL AUTHORITY AREA AS CONTEMPLATED IN SECTION 2 (11) OF THE BLACK LOCAL AUTHORITIES ACT, 1982 (ACT No. 102 OF 1982)**

I, Daniël Jacobus Hough, Administrator of the Province of the Transvaal, by virtue of the powers vested in me by section 2 (11) of the Black Local Authorities Act, 1982 (Act No. 102 of 1982), hereby declare the areas mentioned in the Schedule hereto as defined areas.

**D. J. HOUGH,**

Administrator of the Province of the Transvaal.

**Administrateurskennisgewing 311****6 Julie 1993**

**WET OP SWART PLAASLIKE OWERHEDE, 1992  
(WET No. 102 VAN 1982)**

**OMSKRYWING VAN 'N GEBIED BUIITE 'N PLAASLIKE OWERHEIDSGEBIED SOOS BEOOG BY ARTIKEL 2 (11) VAN DIE WET OP SWART PLAASLIKE OWERHEDE, 1982 (WET No. 102 VAN 1982)**

Ek, Daniël Jacobus Hough, Administrateur van die provinsie Transvaal, kragtens die bevoegdheid my verleen by artikel 2 (11) van die Wet op Swart Plaaslike Owerhede, 1982 (Wet No. 102 van 1982), verklaar hierby die gebiede in die Bylae hierby vermeld as omskrewe gebiede.

**D. J. HOUGH,**

Administrateur van Transvaal.

## APPENDIX

TOWN	LAND DESCRIPTION	APPROXIMATE SIZE	SG DIAGRAM
i) <u>Orange Farm</u> X Proper	Orange Farm Proper	70,6720ha	373/89
X1	- Po 88 Orange Farm 371 IQ - Po 89 Orange Farm 371 IQ - Po 90 Orange Farm 371 IQ -Po 143 Orange Farm 371 IQ	40,4670ha 40,4670ha 40,4670ha 176,8078ha	6131/55 6132/55 6133/55 8406/88
X2	- Po 3 Orange Farm 371 IQ - Po 51 Orange Farm 371 IQ - Po 7 Orange Farm 371 IQ	183,1575ha 40,4022ha 243,8173ha	5515/51 7234/54 5519/51
X3	- Po 87 Orange Farm 371 IQ	40,4670ha	6130/55
X6	- Po 61 Orange Farm 371 IQ - Po 62 Orange Farm 371 IQ - Po 63 Orange Farm 371 IQ - Po 64 Orange Farm 371 IQ - Po 65 Orange Farm 371 IQ - Po 66 Orange Farm 371 IQ - Po 67 Orange Farm 371 IQ - Po 68 Orange Farm 371 IQ - Po 77 Orange Farm 371 IQ - Po 78 Orange Farm 371 IQ - Po 79 Orange Farm 371 IQ - Po 80 Orange Farm 371 IQ - Po 76 Orange Farm 371 IQ	8,7352ha 8,6937ha 8,6938ha 8,7015ha 8,7170ha 8,6507ha 8,6507ha 8,6532ha 8,6507ha 8,8706ha 8,6909ha 8,7451ha 8,6507ha	6106/55 5950/55 5951/55 5952/55 6107/55 6108/55 6109/55 6110/55 6119/55 6120/55 6121/55 6122/55 6118/55
X7	- Po 67 Orange Farm 371 IQ - Po 68 Orange Farm 371 IQ - Po 69 Orange Farm 371 IQ - Po 70 Orange Farm 371 IQ - Po 71 Orange Farm 371 IQ - Po 72 Orange Farm 371 IQ - Po 73 Orange Farm 371 IQ - Po 74 Orange Farm 371 IQ - Po 75 Orange Farm 371 IQ - Po 76 Orange Farm 371 IQ	8,6507ha 8,6532ha 8,6507ha 8,6621ha 8,6672ha 8,6652ha 8,6507ha 8,6507ha 8,6507ha 8,6507ha	6109/55 6110/55 6111/55 5112/57 6113/55 6114/55 6115/55 6116/55 6117/55 6118/55

TOWN	LAND DESCRIPTION	APPROXIMATE SIZE	SG DIAGRAM
Orange Farm X7	- Po 76 Orange Farm 371 IQ - Po 79 Orange Farm 371 IQ - Po 80 Orange Farm 371 IQ - Po 81 Orange Farm 371 IQ - Po 82 Orange Farm 371 IQ - Po 83 Orange Farm 371 IQ - Po 91 Orange Farm 371 IQ - Po 92 Orange Farm 371 IQ - Po 93 Orange Farm 371 IQ - Po 99 Orange Farm 371 IQ -Po 100 Orange Farm 371 IQ -Po 101 Orange Farm 371 IQ	8,6507ha 8,6909ha 8,7541ha 8,5656ha 8,8169ha 8,7831ha 8,5650ha 8,5650ha 8,5650ha 8,5650ha 8,5650ha	6119/55 6121/55 6122/55 6123/55 6124/55 6125/55 5897/57 5898/57 6899/57 5905/57 5906/57 5907/57
X8	- Po 92 Orange Farm 371 IQ - Po 93 Orange Farm 371 IQ - Po 94 Orange Farm 371 IQ - Po 95 Orange Farm 371 IQ - Po 96 Orange Farm 371 IQ - Po 97 Orange Farm 371 IQ - Po 98 Orange Farm 371 IQ -Po 100 Orange Farm 371 IQ -Po 101 Orange Farm 371 IQ -Po 102 Orange Farm 371 IQ -Po 103 Orange Farm 371 IQ -Po 104 Orange Farm 371 IQ -Po 105 Orange Farm 371 IQ	8,5650ha 8,5650ha 8,5650ha 8,5650ha 8,5650ha 8,5650ha 8,5650ha 8,5650ha 8,5650ha 8,5650ha 8,5650ha 8,5650ha 8,5650ha	5898/57 5899/57 5900/57 5901/57 5902/57 5903/57 5904/57 5906/57 5907/57 5908/57 5909/57 5910/57 5911/57
X9	-Po 115 Orange Farm 371 IQ -Po 116 Orange Farm 371 IQ -Po 117 Orange Farm 371 IQ -Po 118 Orange Farm 371 IQ -Po 120 Orange Farm 371 IQ -Po 121 Orange Farm 371 IQ	8,5650ha 8,5650ha 8,5650ha 8,7363ha 9,2076ha 8,5650ha	5316/68 5317/68 5318/68 5319/68 5321/68 5322/68
Orange Farm X9 vervolg	-Po 123 Orange Farm 371 IQ -Po 124 Orange Farm 371 IQ -Po 125 Orange Farm 371 IQ -Po 126 Orange Farm 371 IQ -Po 127 Orange Farm 371 IQ -Po 128 Orange Farm 371 IQ -Po 129 Orange Farm 371 IQ -Po 130 Orange Farm 371 IQ	8,5650ha 8,5650ha 8,5650ha 8,5650ha 8,5650ha 8,5650ha 8,5650ha 8,5650ha	5324/68 5325/68 5326/68 5327/68 5328/68 5329/68 5330/68 5331/68
X10	-Po 106 Orange Farm 371 IQ -Po 107 Orange Farm 371 IQ -Po 108 Orange Farm 371 IQ -Po 118 Orange Farm 371 IQ -Po 119 Orange Farm 371 IQ -Po 120 Orange Farm 371 IQ	1,9029ha 4,0656ha 8,6057ha 8,7363ha 9,5840ha 9,2076ha	3560/66 3561/663 562/66 5319/68 5320/68 5321/68
ii) <u>Drieziek</u> X Proper	- Po 21 Drieziek 368 IQ	14,2068ha	5879/54

TOWN	LAND DESCRIPTION	APPROXIMATE SIZE	SG DIAGRAM
X1	- Po 1 Drieziek 368 IQ	171,3ha	2798/22
	- Po 3 Drieziek 368 IQ	43,6173ha	5597/47
	- Po 22 Drieziek 368 IQ	10,0873ha	5880/54
	- Po 23 Drieziek 368 IQ	10,2696ha	5881/54
	- Po 24 Drieziek 368 IQ	8,9919ha	5882/54
	- Po 25 Drieziek 368 IQ	8,5650ha	5883/54
	- Po 26 Drieziek 368 IQ	8,5650ha	5884/54
	- Po 27 Drieziek 368 IQ	9,2858ha	5885/54
	- Po 28 Drieziek 368 IQ	10,3478ha	5886/54
	- Po 99 Drieziek 368 IQ	8,5650ha	5905/57
	- Po 100 Drieziek 368 IQ	8,5650ha	5906/57
	- Po 101 Drieziek 368 IQ	8,5650ha	5907/57
	- Po 102 Drieziek 368 IQ	8,5650ha	5908/57
	- Po 103 Drieziek 368 IQ	8,5650ha	5909/57
	- Po 104 Drieziek 368 IQ	8,5650ha	5910/57
- Po 105 Drieziek 368 IQ	8,5650ha	5911/57	
Drieziek X2	- Po 20 Drieziek 368 IQ	8,5650ha	5876/54
X3	- Po 1 Drieziek 368 IQ	171,3ha	2798/22
	- Po 3 Drieziek 368 IQ	43,6173ha	5597/47
	- Po 11 Drieziek 369 IQ	9,2607ha	6180/50
	- Po 14 Drieziek 369 IQ	9,2607ha	6183/50
	- Res 2 Drieziek 369 IQ	9,2607ha	6184/50
	- Po 19 Drieziek 369 IQ	8,5650ha	5877/54
	- Po 30 Drieziek 369 IQ	8,5650ha	5888/54
	- Po 37 Drieziek 369 IQ	4,6848ha	10036/86
X4	- Po 1 Drieziek 368 IQ	171,3ha	2798/22
	- Po 127 Drieziek 371 IQ	8,5650ha	5328/68
	- Po 128 Drieziek 371 IQ	8,9061ha	5329/68
	- Po 129 Drieziek 371 IQ	8,5650ha	5330/68
X5	- Res Po 2 Drieziek 368 IQ	9,2607ha	4686/24
	- Po 8 Drieziek 368 IQ	9,2607ha	6177/50
	- Po 9 Drieziek 368 IQ	9,2607ha	6178/50
	- Po 10 Drieziek 368 IQ	9,2607ha	6179/50
	- Po 16 Drieziek 368 IQ	8,5650ha	5874/54
	- Po 17 Drieziek 368 IQ	8,5650ha	5875/54
	- Po 18 Drieziek 368 IQ	8,5650ha	5876/54
	- Po 30 Drieziek 368 IQ	8,5650ha	5888/54
	- Po 31 Drieziek 368 IQ	8,5650ha	5889/54
	- Po 32 Drieziek 368 IQ	8,5650ha	5890/54
	- Po 33 Drieziek 368 IQ	8,5650ha	5891/54
	- Po 34 Drieziek 368 IQ	8,5650ha	5892/54
	-Po 132 Rietfontein 336 IQ	8,5123ha	5895/54
	-Po 133 Rietfontein 336 IQ	8,5123ha	5896/54
	-Po 147 Rietfontein 336 IQ	5,1203ha	10023/86
-Po 149 Rietfontein 336 IQ	0,5855ha	10025/86	
-Po 152 Rietfontein 336 IQ	2,1018ha	10028/86	
-Po 153 Rietfontein 336 IQ	0,3755ha	10029/86	
X6	- Po 29 Drieziek 368 IQ	8,7457ha	5887/54

TOWN	LAND DESCRIPTION	APPROXIMATE SIZE	SG DIAGRAM
Drieziek X8	- Po 28 Drieziek 368 IQ	10,3478ha	5886/54
iii) <u>Lenasia</u> Deurgangskamp	-Po 129 Rietfontein 301 IQ	769,3461	7045/83
iv) <u>Ivory Park</u> X2 + 7	- Po 11 Kaalfontein 13 IR	187,2197ha	4793/87
X5 + 6 + 8- 11	- Po 5 Kaalfontein 13 IR	524,0147ha	2543/30
X12 +13	Po 58 Olifantsfontein410JR	189,2560ha	602/88
v) <u>Sunset Village</u> X Proper	- Po 4 Rietvallei 241 IQ - Po 23 Rietvallei 241 IQ - Po 40 Rietvallei 241 IQ	44,7436ha 22,4403ha 683,5405ha	3866/09 2297/45 8909/82
X1	- Po 5 en Re 9 Rietvallei 241 IQ	362,5836ha	4444/26
vi) <u>Swanenville</u> Plakkerskamp	- Po 21 Rietvallei 241 IQ	13,5234ha	2295/45
vii) <u>Poortje</u> Fase 1	- Po 4 Poortje 338 IQ	111,1492ha	811/1992
viii) <u>Stretford</u> X Proper - X8	- Re 1 Wildebeesfontein - Po 8 Wildebeesfontein - Po 8 Orange Farm - Po 10 Orange Farm	1286,7242ha 1028,8149ha 265,3217ha 71,589ha	5598/04 294/28 5520/51 5522/51

(IW423)

**BYLAE**

DORPNAAM	OMSKRYWING	GROOTTE	LG DIAGRAM
i) <u>Orange Farm</u> X Proper	Orange Farm Proper	70,6720ha	373/89
X1	- Ged 88 Orange Farm 371 IQ - Ged 89 Orange Farm 371 IQ - Ged 90 Orange Farm 371 IQ - Ged 143 Orange Farm 371 IQ	40,4670ha 40,4670ha 40,4670ha 176,8078ha	6131/55 6132/55 6133/55 8406/88
X2	- Ged 3 Orange Farm 371 IQ - Ged 51 Orange Farm 371 IQ - Ged 7 Orange Farm 371 IQ	183,1575ha 40,4022ha 243,8173ha	5515/51 7234/54 5519/51
X3	- Ged 87 Orange Farm 371 IQ	40,4670ha	6130/55
X6	- Ged 61 Orange Farm 371 IQ - Ged 62 Orange Farm 371 IQ - Ged 63 Orange Farm 371 IQ - Ged 64 Orange Farm 371 IQ - Ged 65 Orange Farm 371 IQ - Ged 66 Orange Farm 371 IQ - Ged 67 Orange Farm 371 IQ - Ged 68 Orange Farm 371 IQ - Ged 77 Orange Farm 371 IQ - Ged 78 Orange Farm 371 IQ - Ged 79 Orange Farm 371 IQ - Ged 80 Orange Farm 371 IQ - Ged 76 Orange Farm 371 IQ	8,7352ha 8,6937ha 8,6938ha 8,7015ha 8,7170ha 8,6507ha 8,6507ha 8,6532ha 8,6507ha 8,8706ha 8,6909ha 8,7451ha 8,6507ha	6106/55 5950/55 5951/55 5952/55 6107/55 6108/55 6109/55 6110/55 6119/55 6120/55 6121/55 6122/55 6118/55
X7	- Ged 67 Orange Farm 371 IQ - Ged 68 Orange Farm 371 IQ - Ged 69 Orange Farm 371 IQ - Ged 70 Orange Farm 371 IQ - Ged 71 Orange Farm 371 IQ - Ged 72 Orange Farm 371 IQ - Ged 73 Orange Farm 371 IQ - Ged 74 Orange Farm 371 IQ - Ged 75 Orange Farm 371 IQ - Ged 76 Orange Farm 371 IQ	8,6507ha 8,6532ha 8,6507ha 8,6621ha 8,6672ha 8,6652ha 8,6507ha 8,6507ha 8,6507ha 8,6507ha	6109/55 6110/55 6111/55 5112/57 6113/55 6114/55 6115/55 6116/55 6117/55 6118/55

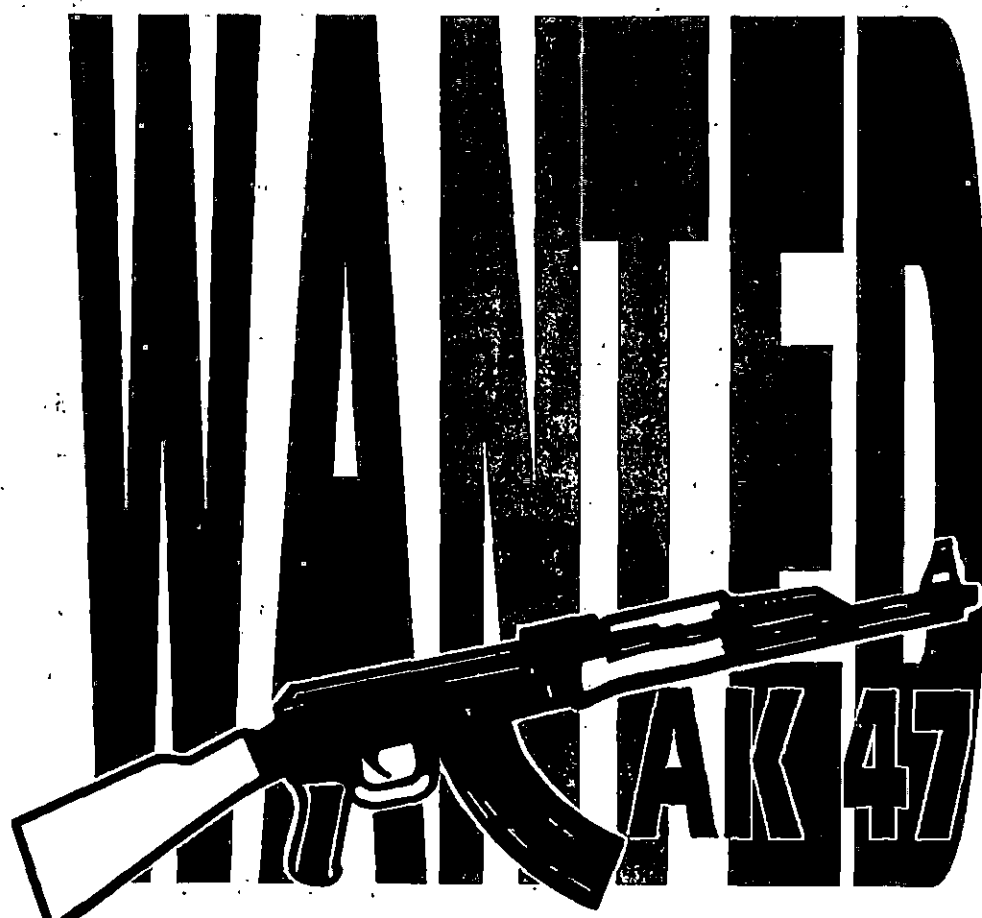
DORPNAAM	OMSKRYWING	GROOTTE	LG DIAGRAM
Orange Farm X7	- Ged 76 Orange Farm 371 IQ - Ged 79 Orange Farm 371 IQ - Ged 80 Orange Farm 371 IQ - Ged 81 Orange Farm 371 IQ - Ged 82 Orange Farm 371 IQ - Ged 83 Orange Farm 371 IQ - Ged 91 Orange Farm 371 IQ - Ged 92 Orange Farm 371 IQ - Ged 93 Orange Farm 371 IQ - Ged 99 Orange Farm 371 IQ -Ged 100 Orange Farm 371 IQ -Ged 101 Orange Farm 371 IQ	8,6507ha 8,6909ha 8,7541ha 8,5656ha 8,8169ha 8,7831ha 8,5650ha 8,5650ha 8,5650ha 8,5650ha 8,5650ha	6119/55 6121/55 6122/55 6123/55 6124/55 6125/55 5897/57 5898/57 6899/57 5905/57 5906/57 5907/57
X8	- Ged 92 Orange Farm 371 IQ - Ged 93 Orange Farm 371 IQ - Ged 94 Orange Farm 371 IQ - Ged 95 Orange Farm 371 IQ - Ged 96 Orange Farm 371 IQ - Ged 97 Orange Farm 371 IQ - Ged 98 Orange Farm 371 IQ -Ged 100 Orange Farm 371 IQ -Ged 101 Orange Farm 371 IQ -Ged 102 Orange Farm 371 IQ -Ged 103 Orange Farm 371 IQ -Ged 104 Orange Farm 371 IQ -Ged 105 Orange Farm 371 IQ	8,5650ha 8,5650ha 8,5650ha 8,5650ha 8,5650ha 8,5650ha 8,5650ha 8,5650ha 8,5650ha 8,5650ha 8,5650ha 8,5650ha 8,5650ha	5898/57 5899/57 5900/57 5901/57 5902/57 5903/57 5904/57 5906/57 5907/57 5908/57 5909/57 5910/57 5911/57
X9	-Ged 115 Orange Farm 371 IQ -Ged 116 Orange Farm 371 IQ -Ged 117 Orange Farm 371 IQ -Ged 118 Orange Farm 371 IQ -Ged 120 Orange Farm 371 IQ -Ged 121 Orange Farm 371 IQ	8,5650ha 8,5650ha 8,5650ha 8,7363ha 9,2076ha 8,5650ha	5316/68 5317/68 5318/68 5319/68 5321/68 5322/68
Orange Farm X9 vervolg	-Ged 123 Orange Farm 371 IQ -Ged 124 Orange Farm 371 IQ -Ged 125 Orange Farm 371 IQ -Ged 126 Orange Farm 371 IQ -Ged 127 Orange Farm 371 IQ -Ged 128 Orange Farm 371 IQ -Ged 129 Orange Farm 371 IQ -Ged 130 Orange Farm 371 IQ	8,5650ha 8,5650ha 8,5650ha 8,5650ha 8,5650ha 8,5650ha 8,5650ha 8,5650ha	5324/68 5325/68 5326/68 5327/68 5328/68 5329/68 5330/68 5331/68
X10	-Ged 106 Orange Farm 371 IQ -Ged 107 Orange Farm 371 IQ -Ged 108 Orange Farm 371 IQ -Ged 118 Orange Farm 371 IQ -Ged 119 Orange Farm 371 IQ -Ged 120 Orange Farm 371 IQ	1,9029ha 4,0656ha 8,6057ha 8,7363ha 9,5840ha 9,2076ha	3560/66 3561/663 562/66 5319/68 5320/68 5321/68
ii) <u>Drieziek</u> X Proper	- Ged 21 Drieziek 368 IQ	14,2068ha	5879/54



DORPNAAM	OMSKRYWING	GROOTTE	LG DIAGRAM
X1	- Ged 1 Drieziek 368 IQ - Ged 3 Drieziek 368 IQ - Ged 22 Drieziek 368 IQ - Ged 23 Drieziek 368 IQ - Ged 24 Drieziek 368 IQ - Ged 25 Drieziek 368 IQ - Ged 26 Drieziek 368 IQ - Ged 27 Drieziek 368 IQ - Ged 28 Drieziek 368 IQ - Ged 99 Drieziek 368 IQ - Ged 100 Drieziek 368 IQ - Ged 101 Drieziek 368 IQ - Ged 102 Drieziek 368 IQ - Ged 103 Drieziek 368 IQ - Ged 104 Drieziek 368 IQ - Ged 105 Drieziek 368 IQ	171,3ha 43,6173ha 10,0873ha 10,2696ha 8,9919ha 8,5650ha 8,5650ha 9,2858ha 10,3478ha 8,5650ha 8,5650ha 8,5650ha 8,5650ha 8,5650ha 8,5650ha	2798/22 5597/47 5880/54 5881/54 5882/54 5883/54 5884/54 5885/54 5886/54 5905/57 5906/57 5907/57 5908/57 5909/57 5910/57 5911/57
Drieziek X2	- Ged 20 Drieziek 368 IQ	8,5650ha	5876/54
X3	- Ged 1 Drieziek 368 IQ - Ged 3 Drieziek 368 IQ - Ged 11 Drieziek 369 IQ - Ged 14 Drieziek 369 IQ - Res 2 Drieziek 369 IQ - Ged 19 Drieziek 369 IQ - Ged 30 Drieziek 369 IQ - Ged 37 Drieziek 369 IQ	171,3ha 43,6173ha 9,2607ha 9,2607ha 9,2607ha 8,5650ha 8,5650ha 4,6848ha	2798/22 5597/47 6180/50 6183/50 6184/50 5877/54 5888/54 10036/86
X4	- Ged 1 Drieziek 368 IQ - Ged 127 Drieziek 371 IQ - Ged 128 Drieziek 371 IQ - Ged 129 Drieziek 371 IQ	171,3ha 8,5650ha 8,9061ha 8,5650ha	2798/22 5328/68 5329/68 5330/68
X5	- Res Ged 2 Drieziek 368 IQ - Ged 8 Drieziek 368 IQ - Ged 9 Drieziek 368 IQ - Ged 10 Drieziek 368 IQ - Ged 16 Drieziek 368 IQ - Ged 17 Drieziek 368 IQ - Ged 18 Drieziek 368 IQ - Ged 30 Drieziek 368 IQ - Ged 31 Drieziek 368 IQ - Ged 32 Drieziek 368 IQ - Ged 33 Drieziek 368 IQ - Ged 34 Drieziek 368 IQ - Ged 132 Rietfontein 336 IQ - Ged 133 Rietfontein 336 IQ - Ged 147 Rietfontein 336 IQ - Ged 149 Rietfontein 336 IQ - Ged 152 Rietfontein 336 IQ - Ged 153 Rietfontein 336 IQ	9,2607ha 9,2607ha 9,2607ha 9,2607ha 8,5650ha 8,5650ha 8,5650ha 8,5650ha 8,5650ha 8,5650ha 8,5650ha 8,5650ha 8,5123ha 8,5123ha 5,1203ha 0,5855ha 2,1018ha 0,3755ha	4686/24 6177/50 6178/50 6179/50 5874/54 5875/54 5876/54 5888/54 5889/54 5890/54 5891/54 5892/54 5895/54 5896/54 10023/86 10025/86 10028/86 10029/86
X6	- Ged 29 Drieziek 368 IQ	8,7457ha	5887/54

DORPNAAM	OMSKRYWING	GROOTTE	LG DIAGRAM
Drieziek X8	- Ged 28 Drieziek 368 IQ	10,3478ha	5886/54
iii) <u>Lenasia</u> Deurgangs- kamp	-Ged 129 Rietfontein 301 IQ	769,3461	7045/83
iv) <u>Ivory</u> <u>Park</u> X2 + 7	- Ged 11 Kaalfontein 13 IR	187,2197ha	4793/87
X5 + 6 + 8- 11	- Ged 5 Kaalfontein 13 IR	524,0147ha	2543/30
X12 +13	Ged 58 Olifantsfontein410JR	189,2560ha	602/88
v) <u>Sunset</u> <u>Village</u> X Proper	- Ged 4 Rietvallei 241 IQ - Ged 23 Rietvallei 241 IQ - Ged 40 Rietvallei 241 IQ	44,7436ha 22,4403ha 683,5405ha	3866/09 2297/45 8909/82
X1	- Ged 5 en Re 9 Rietvallei 241 IQ	362,5836ha	4444/26
vi) <u>Swanie-</u> <u>ville</u> Plakkerskamp	- Ged 21 Rietvallei 241 IQ	13,5234ha	2295/45
vii) <u>Poortje</u> Fase 1	- Ged 4 Poortje 338 IQ	111,1492ha	811/1992
viii) <u>Stretford</u> X Proper - X8	- Res 1 Wildebeesfontein - Ged 8 Wildebeesfontein - Ged 8 Orange Farm - Ged 10 Orange Farm	1286,7242ha 1028,8149ha 265,3217ha 71,589ha	5598/04 294/28 5520/51 5522/51

(IW422)



**STOP MURDER  
ROBBERY  
RAPE**

---

**UP TO R6000 WILL BE PAID  
FOR VALUABLE INFORMATION**

---

**SECRECY GUARANTEED**

**PHONE TOLL FREE**

**0800 11 12 13**

# WARNING

**Possession of  
illegal weapons  
could condemn**

**you to:**

**UP TO 25 YEARS IN JAIL,  
COMMUNITY AND  
FAMILY REJECTION**

**PLEASE  
HAND IT IN**

*For the sake of your community*

# IMPORTANT!!

## Placing of languages:

### *Government Gazettes*

1. Notice is hereby given that the interchange of languages in the *Government Gazette* will be effected annually from the first issue in October.
2. For the period 1 October 1992 to 30 September 1993, English is to be placed **FIRST**.
3. This arrangement is in conformity with Gazettes containing Act of Parliament etc. where the language sequence remains constant throughout the sitting of Parliament.
4. *It is therefore expected of you, the advertiser, to see that your copy is in accordance with the above-mentioned arrangement in order to avoid unnecessary style changes and editing to correspond with the correct style.*

—oO—

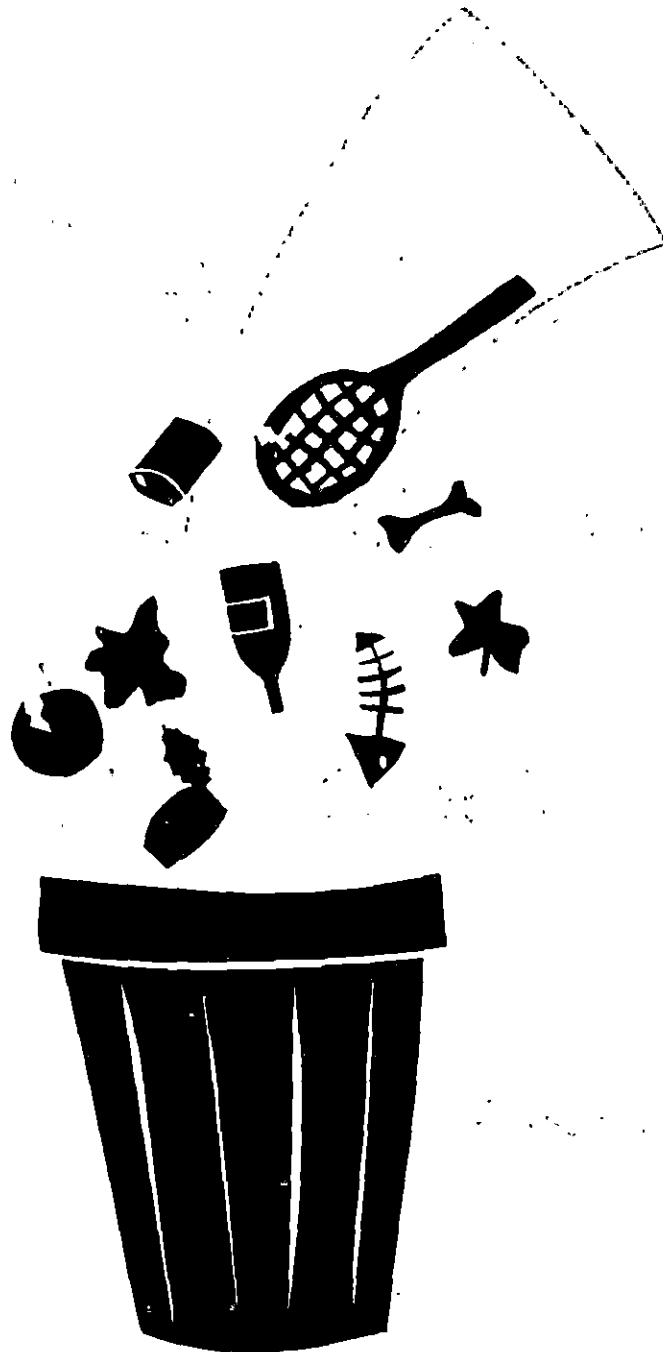
# BELANGRIK!!

## Plasing van tale:

### *Staatskoerante*

1. Hiermee word bekendgemaak dat die omruil van tale in die *Staatskoerant* jaarliks geskied met die eerste uitgawe in Oktober.
2. Vir die tydperk 1 Oktober 1992 tot 30 September 1993 word Engels **EERSTE** geplaas.
3. Hierdie reëling is in ooreenstemming met dié van die Parlement waarby koerante met Wette ens. die taalvolgorde deurgaans behou vir die duur van die sitting.
4. *Dit word dus van u, as adverteerder, verwag om u kopie met bogenoemde reëling te laat strook om onnodige omskakeling en stylredigering in ooreenstemming te bring.*

# Hou Suid-Afrika Skoon



**Gooi rommel waar dit hoort**


Use it

Don't abuse  it

*water is for everybody*

---

Werk mooi daarmee

Ons leef  daarvan

*water is kosbaar*

<b>CONTENTS</b>			<b>INHOUD</b>		
<i>No.</i>		<i>Page No.</i>	<i>Gazette No.</i>	<i>No.</i>	<i>Bladsy Koerant No. No.</i>
<b>ADMINISTRATOR'S NOTICE</b>			<b>ADMINISTRATEURSKENNISGEWING</b>		
310	Black Local Authorities Act (102/1982): Defining of area outside local authority area .....	1	4924	310	Wet op Swart Plaaslike Owerhede (102/1982): Omskrywing van gebied buite plaaslike owerheidsgebied.....
311	do.: do.....	2	4924	311	do.: do.....
					1 4924 2 4924