

# Government Gazette Staatskoerant

REPUBLIC OF SOUTH AFRICA  
REPUBLIEK VAN SUID-AFRIKA

Vol. 493

Pretoria, 7 July 2006  
Julie

**No. 28998**

**CONTENTS****INHOUD**

<i>No.</i>	<i>Page No.</i>	<i>Gazette No.</i>	<i>No.</i>	<i>Bladsy No.</i>	<i>Koerant No.</i>
<b>GOVERNMENT NOTICE</b>			<b>GOEWERMENTSKENNISGEWING</b>		
<b>Transport, Department of</b>			<b>Vervoer, Departement van</b>		
<i>Government Notice</i>			<i>Goewermentskennisgewing</i>		
668 South African National Roads Agency Limited and National Roads Act (7/1998): The South African Roads Agency Limited: Declaration amendment of National Road N4 Section 2: Amendment of Declaration No. 217 of 1982 .....	3	28998	668 Suid-Afrikaanse Nasionale Padagentskap Beperk en Nasionale Paaie Wet (7/1998): Die Suid-Afrikaanse Nasionale Padagentskap Beperk: Verklaring wysiging van Nasionale Pad N4 Seksie 2: Wysiging van Verklaring No. 217 van 1982 .....	3	28998

---

**GOVERNMENT NOTICE  
GOEWERMENTSKENNISGEWING**

---

**DEPARTMENT OF TRANSPORT  
DEPARTEMENT VAN VERVOER**

No. 668

7 July 2006

**THE SOUTH AFRICAN NATIONAL ROADS  
AGENCY LIMITED**

**DECLARATION AMENDMENT OF NATIONAL ROAD N4 SECTION 2**

AMENDMENT OF DECLARATION NO. 217 OF 1982

By virtue of Section 40(1)(b) of The South African National Roads Agency Limited and National Roads Act, 1998 (Act No 7 of 1998) I hereby amend declaration No. 217 of 1982 by substituting sheets 1 to 20 of Plan P332/82 for the subjoined sheets 1 to 32 of Plan P567/06 respectively.

**(National Road N4 Section 2: Zwartkoppies - Spitskop)**

  
\_\_\_\_\_  
**MINISTER OF TRANSPORT**

---

No. 668

7 Julie 2006

**DIE SUID AFRIKAANSE NASIONALE PADAGENTSAP  
BEPERK**

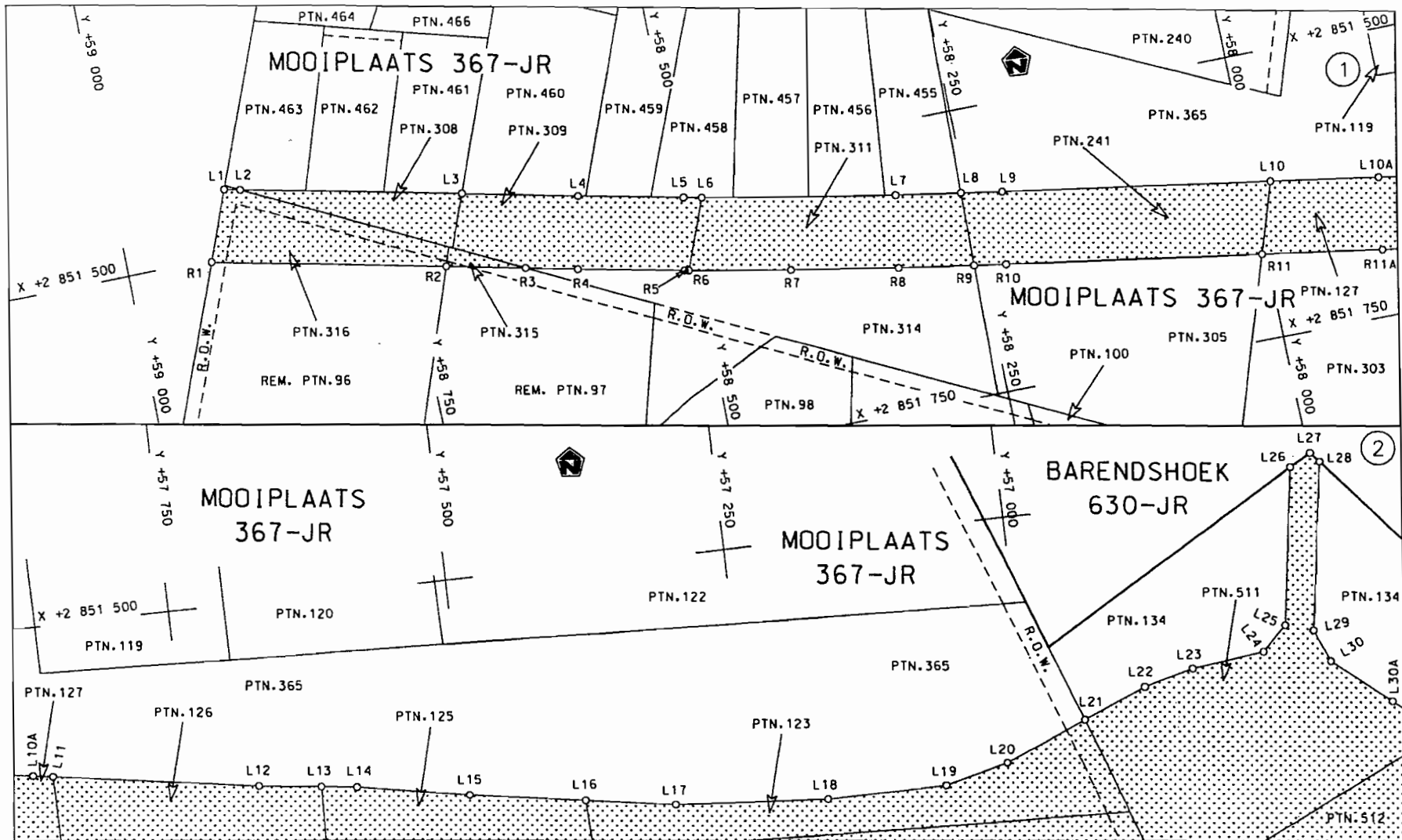
**VERKLARING WYSIGING VAN NASIONALE PAD N4 SEKSIE 2**

WYSIGING VAN VERKLARING NO. 217 VAN 1982

Kragtens artikel 40 (1)(b) van die Suid Afrikaanse Nasionale Padagentskap Beperk en Nasionale Paaie Wet (Wet No. 7 van 1998), wysig ek hiermee verklaring no. 217 van 1982 deur daarin velle 1 tot 20 van Plan P332/82 te vervang deur bygaande velle 1 tot 32 van Plan P567/06 respektiewelik.

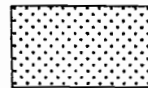
**(Nasionale Pad N4 Seksie 2: Zwartkoppies - Spitskop)**

  
\_\_\_\_\_  
**MINISTER OF TRANSPORT**



Die Suid Afrikaanse Nasionale Padagentskap Beperk  
The South African National Roads Agency Limited

Die figuur getoon  
The figure shown

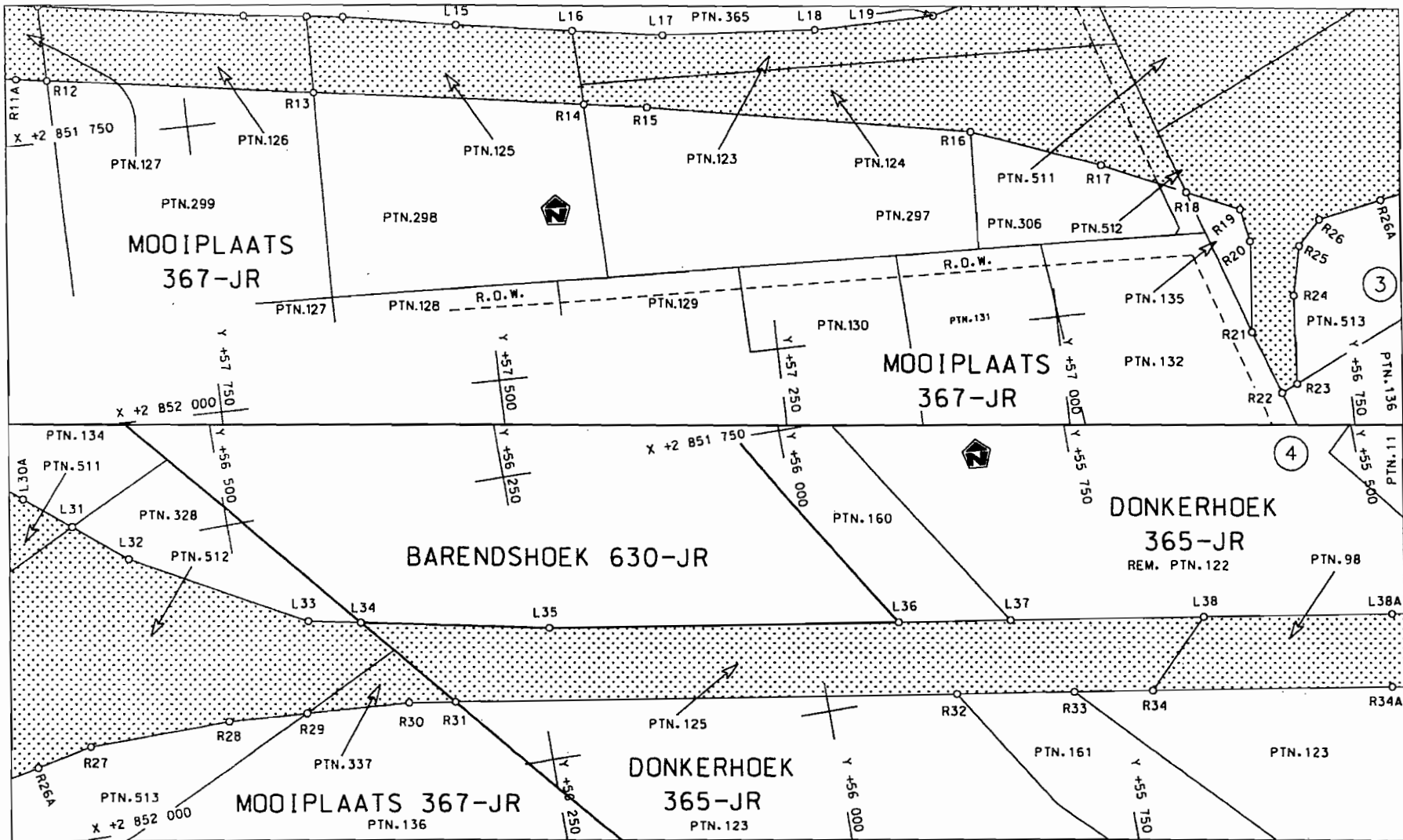


steldie padreserwe voor van 'n gedeelte  
represents the road reserve of a portion  
van Nasionale Roete N4  
of National Route N4  
Seksie 2  
Section 2

Vel  
Sheet 1 van 32  
of

Plan P567/06

D.O.9.A



Die Suid Afrikaanse Nasionale Padagentskap Beperk  
The South African National Roads Agency Limited

Die figuur getoon  
The figure shown



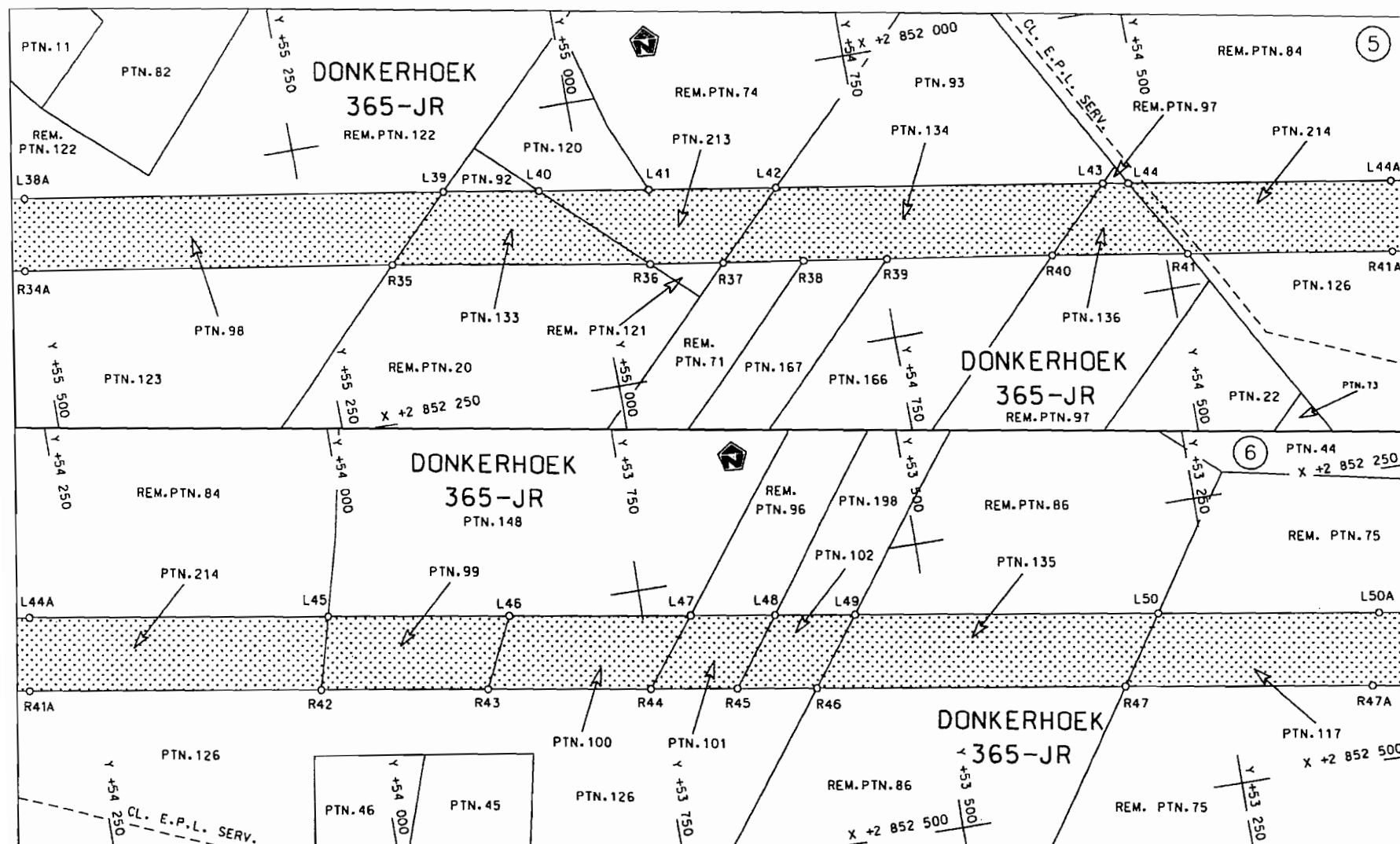
steldie padreserwe voor van 'n gedeelte  
represents the road reserve of a portion  
van Nasionale Roete N4 Sektie  
of National Route N4 Section

2

Vel  
Sheet 2 van 32

Plan P567/06

D.O.9.A



Die Suid Afrikaanse Nasionale Padagentskap Beperk  
The South African National Roads Agency Limited

Die figuur getoon  
The figure shown

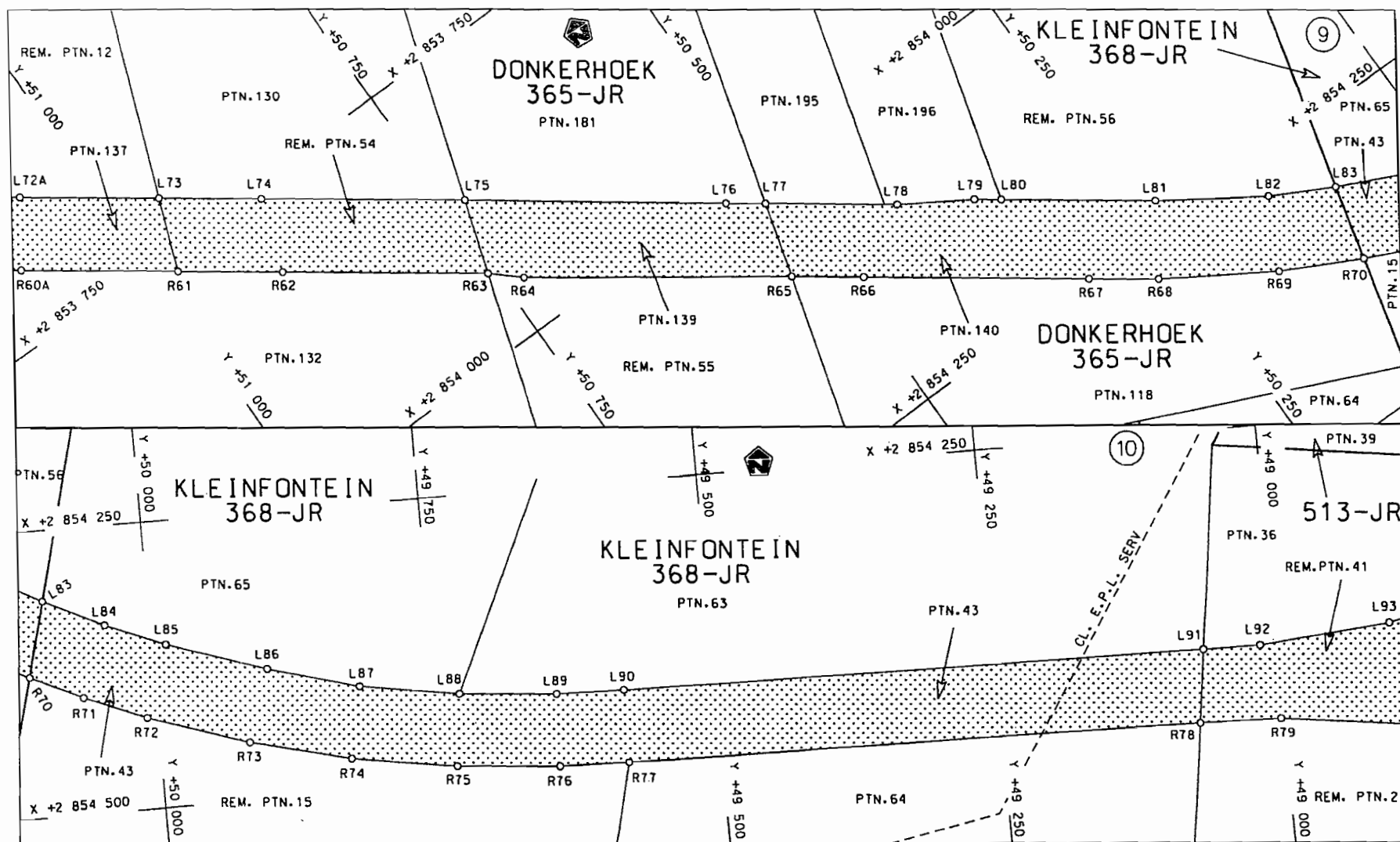


steld die padreserwe voor van 'n gedeelte  
represents the road reserve of a portion  
van Nasionale Roete N4 Seksie  
of National Route N4 Section

Vel  
Sheet 3 van 32  
Plan P567/06

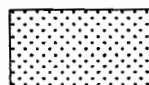
D.O.9.A





Die Suid Afrikaanse Nasionale Padagentskap Beperk  
The South African National Roads Agency Limited

Die figuur getoon  
The figure shown



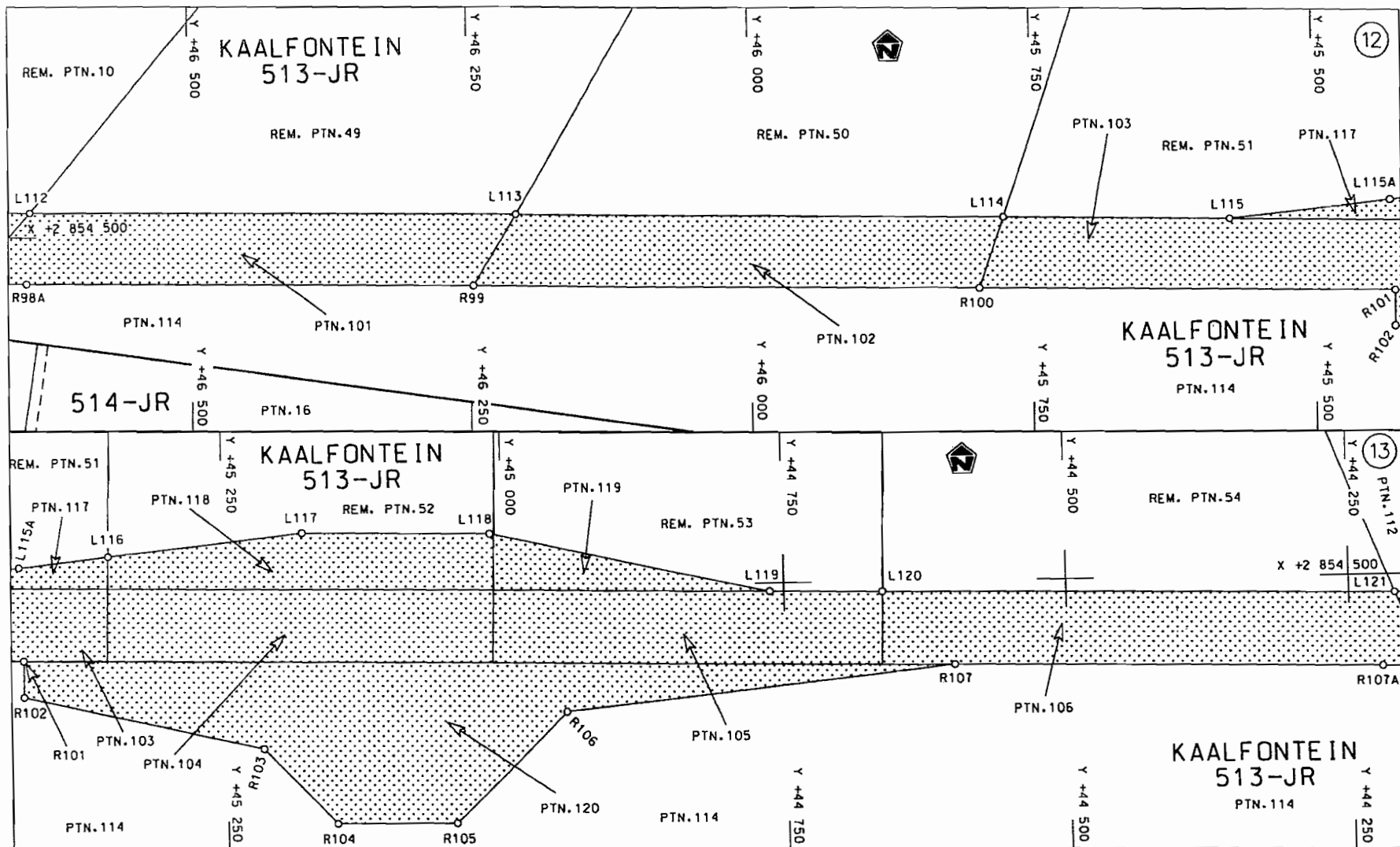
steldie padreserwe voor van 'n gedeelte  
represents the road reserve of a portion  
van Nasionale Roete N4  
of National Route N4  
Seksie 2  
Section

Vel  
Sheet 5 of 32  
Plan P567/06

D.O.9.A



D.O.9.A



Die Suid Afrikaanse Nasionale Padagentskap Beperk  
The South African National Roads Agency Limited

Die figuur getoon  
The figure shown

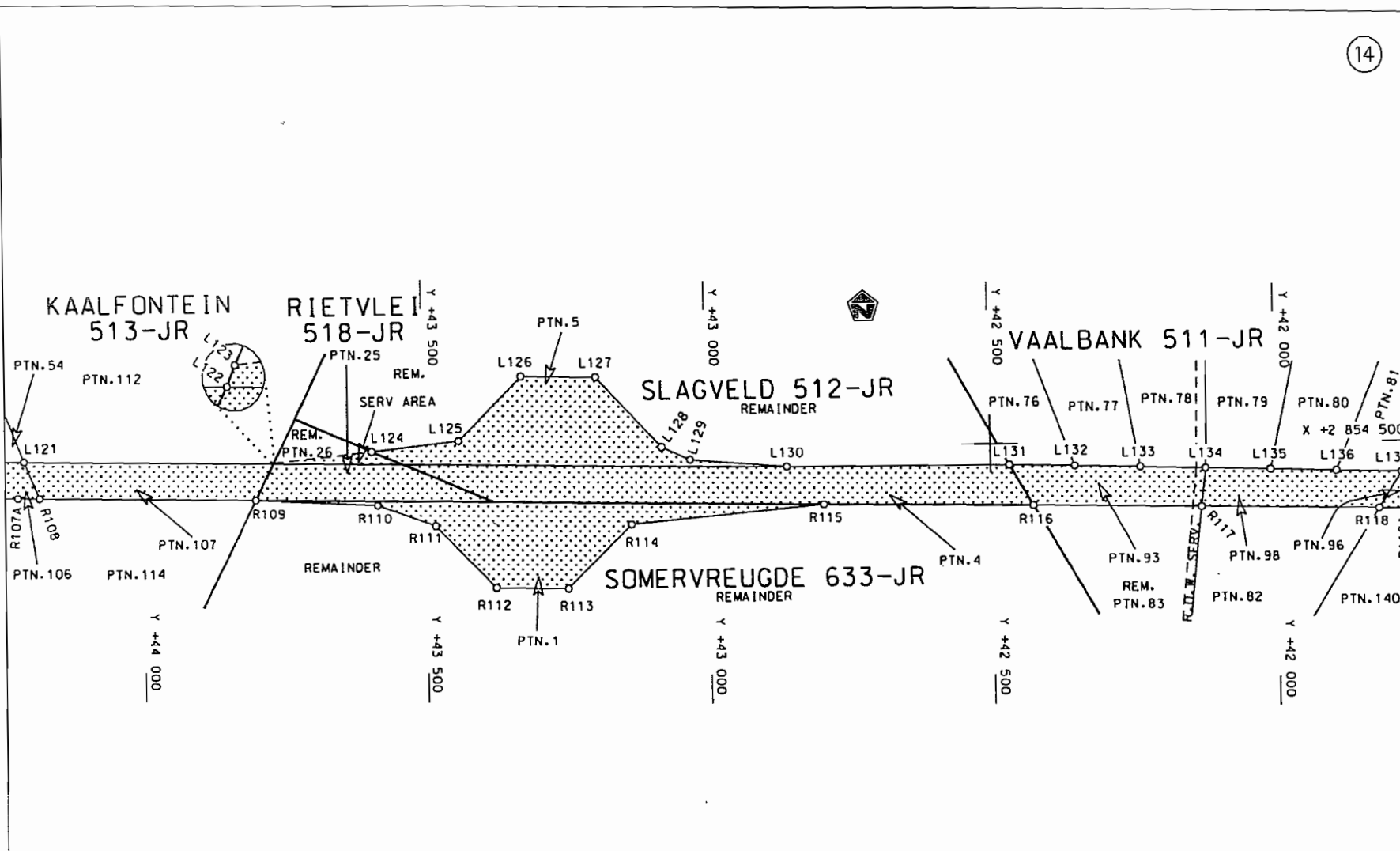


steldie padreserwe voor van 'n gedeelte  
represents the road reserve of a portion  
van Nasionale Roete N4  
of National Route N4  
Seksie  
Section

2

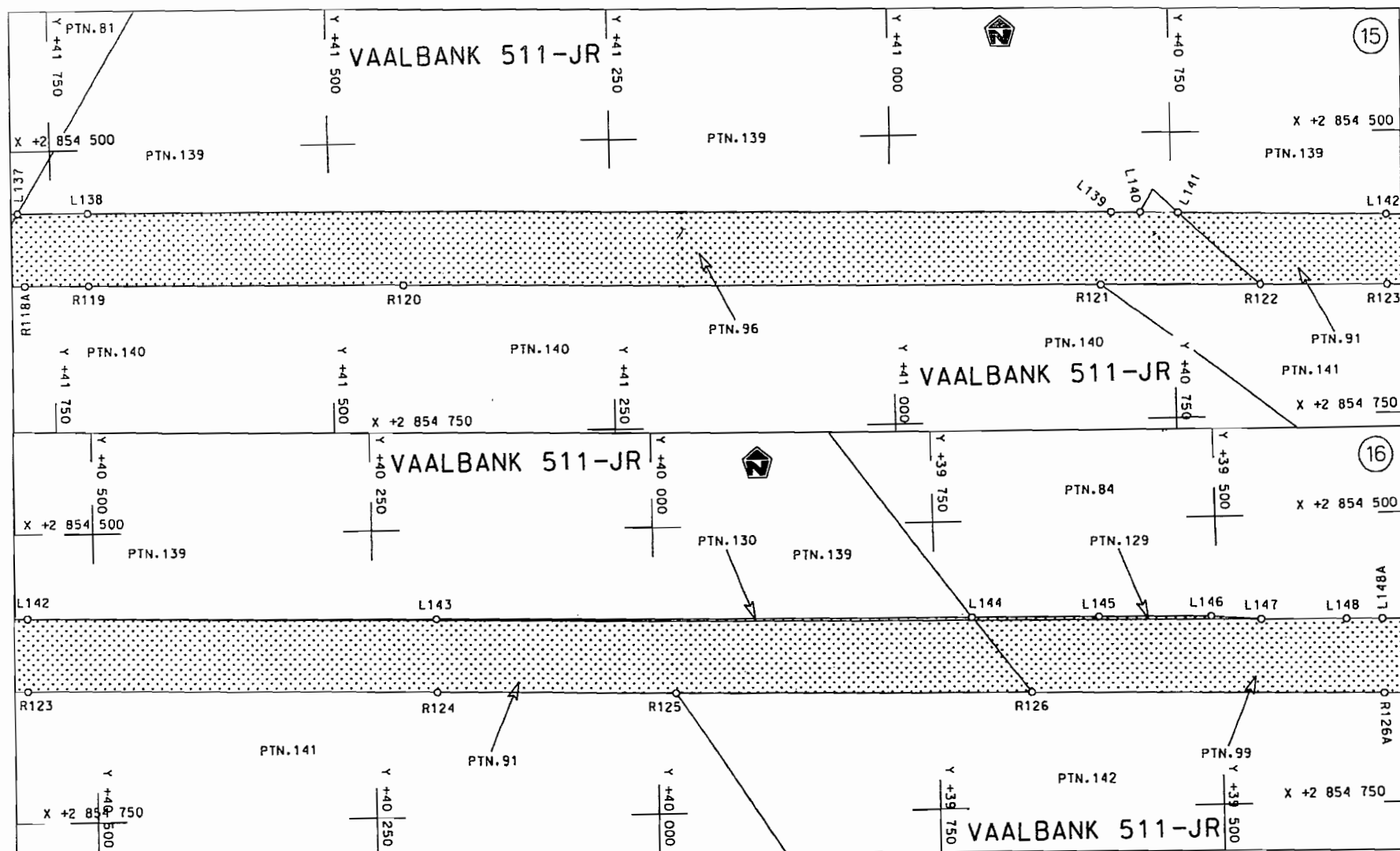
Vel  
Sheet 7 of 32  
Plan P567/06

D.O.9.A



Die Suid Afrikaanse Nasionale Padagentskap Beperk The South African National Roads Agency Limited	Die figuur getoon The figure shown	<div data-bbox="989 1259 1137 1344" data-label="Image"> </div> steldie padreserwe voor van 'n gedeelte represents the road reserve of a portion van Nasionale Roete N4 of National Route Section	Vel Sheet 8 van 32 Plan P567/06
--	---------------------------------------	---	---------------------------------------

D.O.9.A



Die Suid Afrikaanse Nasionale Padagentskap Beperk  
The South African National Roads Agency Limited

Die figuur getoon  
The figure shown



steldie padreserwe voor van 'n gedeelte  
represents the road reserve of a portion  
van Nasionale Roete N4  
of National Route N4

Seksie  
Section

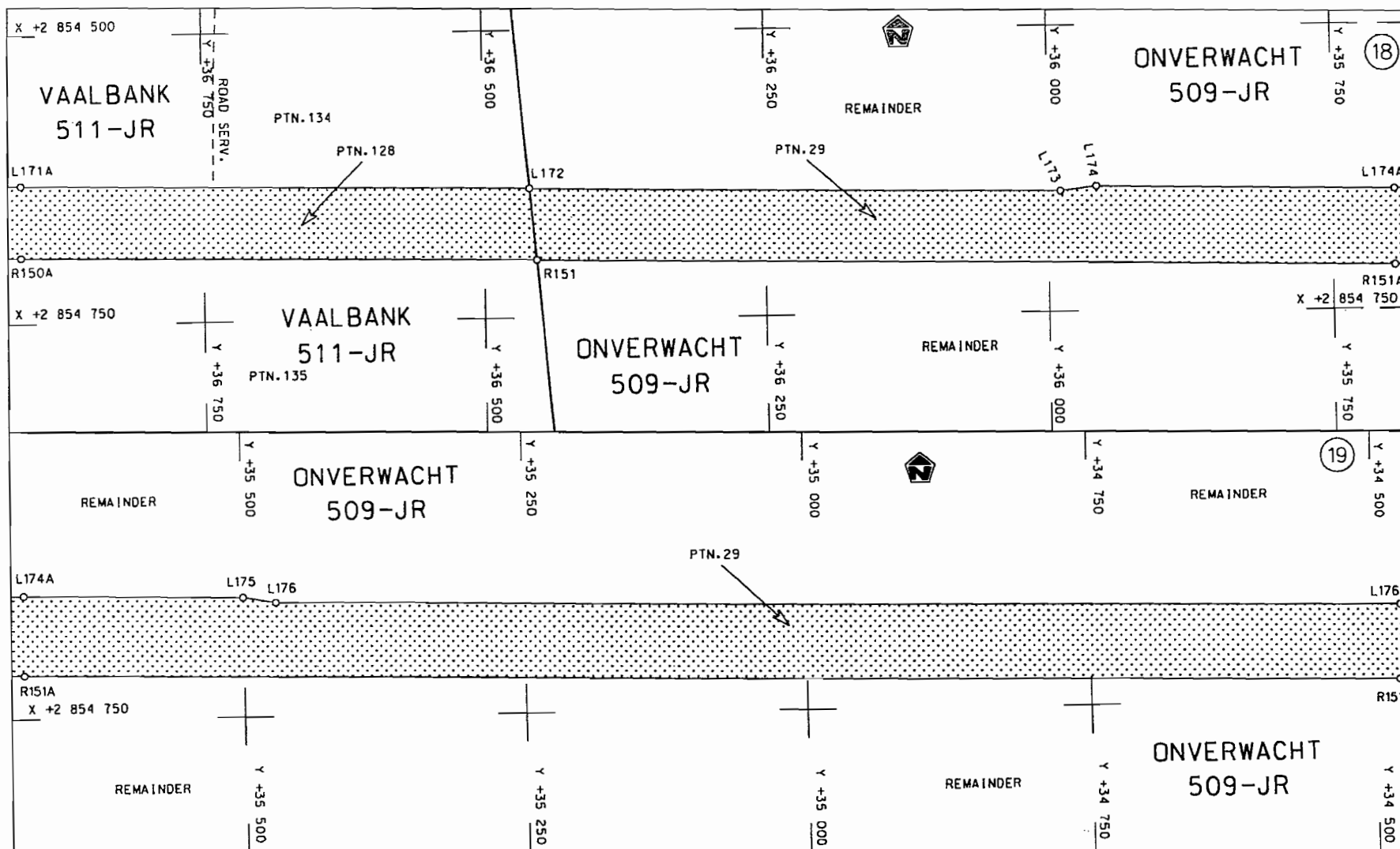
2

Vel  
Sheet 9 van  
of 32

Plan P567/06

D.O.9.A





Die Suid Afrikaanse Nasionale Padagentskop Beperk  
The South African National Roads Agency Limited

Die figuur getoon  
The figure shown

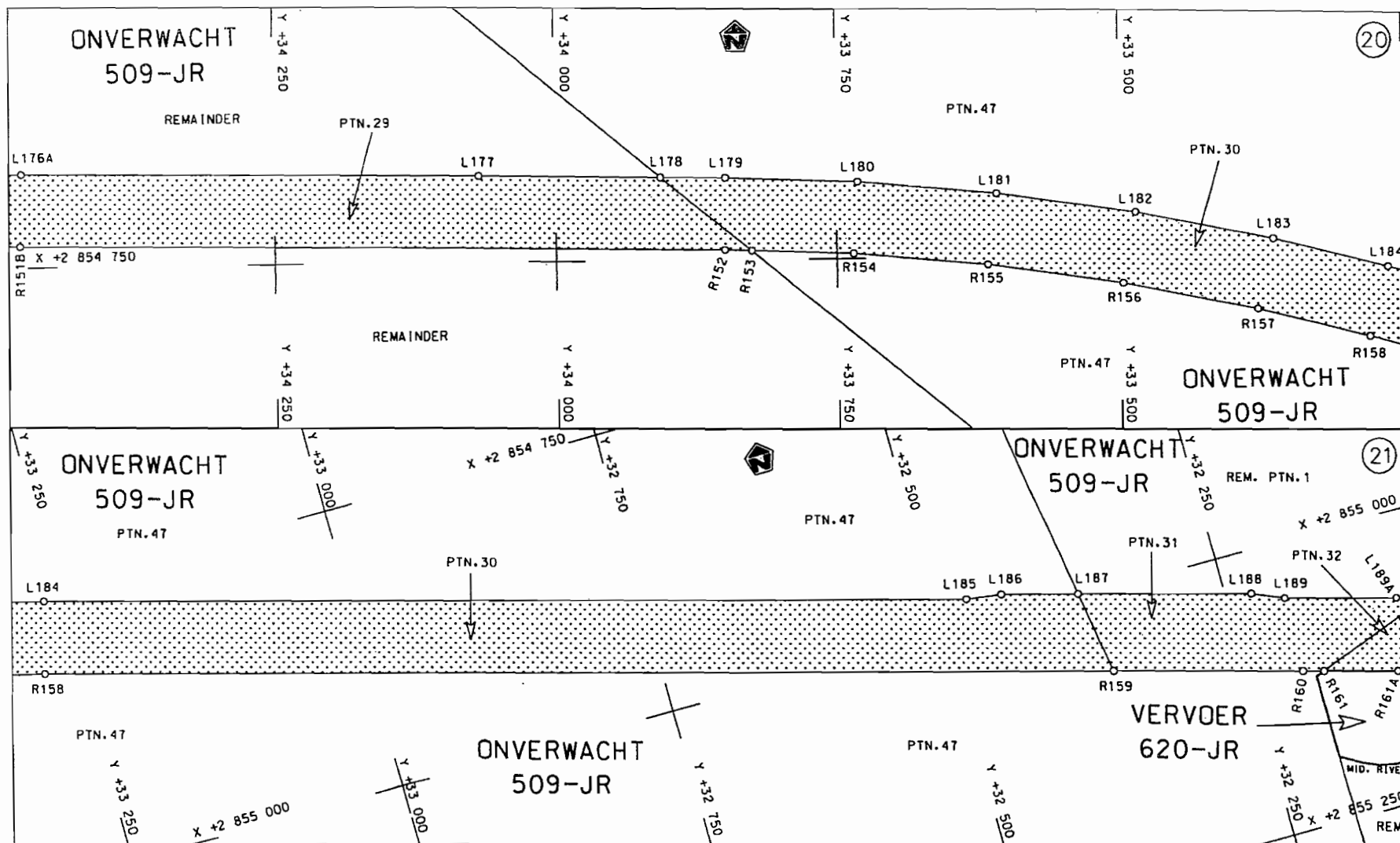


stel die padreserwe voor van 'n gedeelte  
represents the road reserve of a portion  
van Nasionale Roete N4  
of National Route N4  
Seksie  
Section

Vel  
Sheet 11 van 32  
Plan P567/06

2

D.O.9.A



Die Suid Afrikaanse Nasionale Padagentskop Beperk  
The South African National Roads Agency Limited

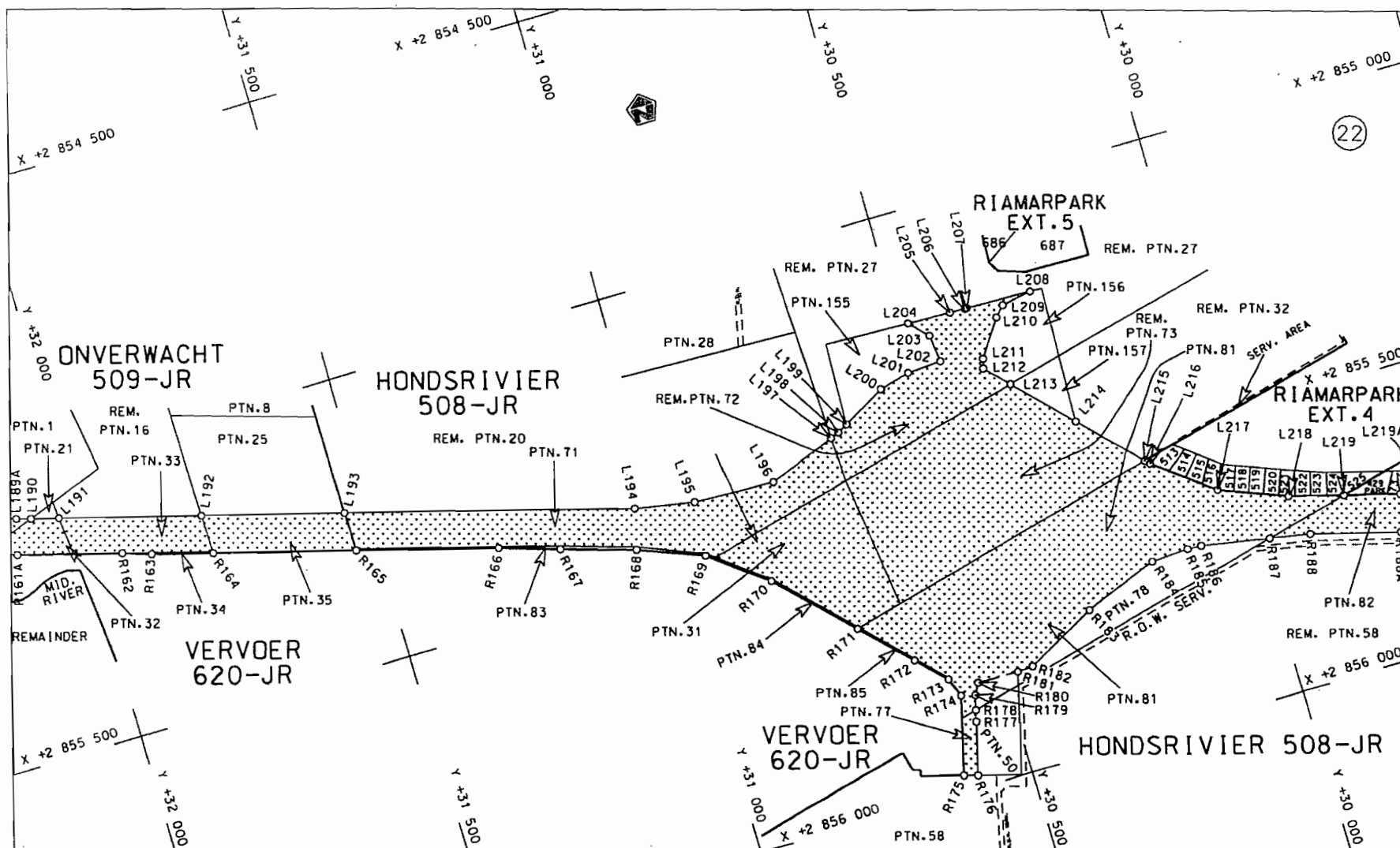
Die figuur getoon  
The figure shown



steldie padreserwe voor van 'n gedeelte  
represents the road reserve of a portion  
van Nasionale Roete N4  
of National Route N4  
Seksie 2  
Section 2

Vel  
Sheet 12 van 32  
Plan P567/06

D.O.9.A



Die figuur getoon

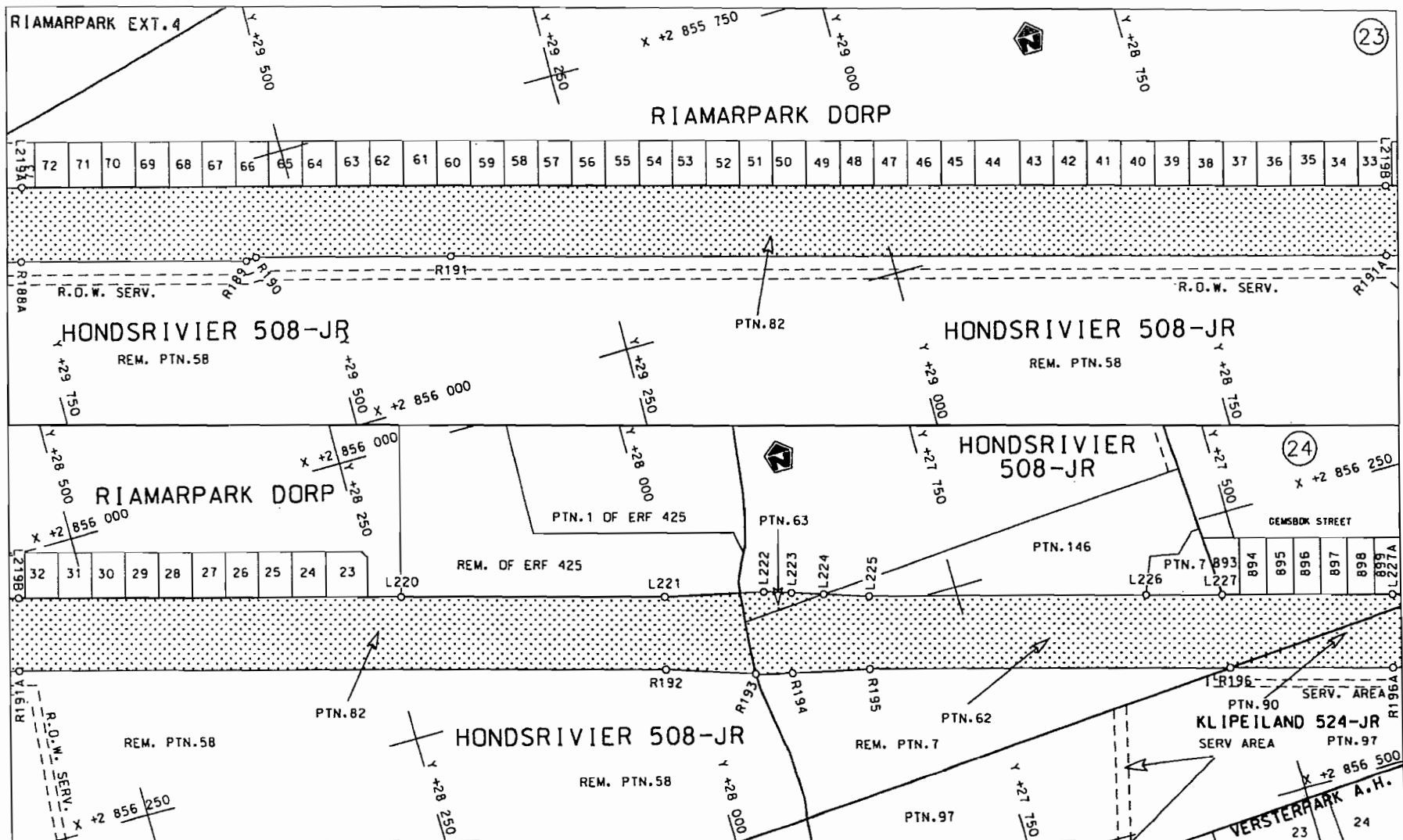
The figure shown:



N4	Seksie Section	2
----	-------------------	---

P567/06

D.O.9.A



Die Suid Afrikaanse Nasionale Padogenskop Beperk  
The South African National Roads Agency Limited

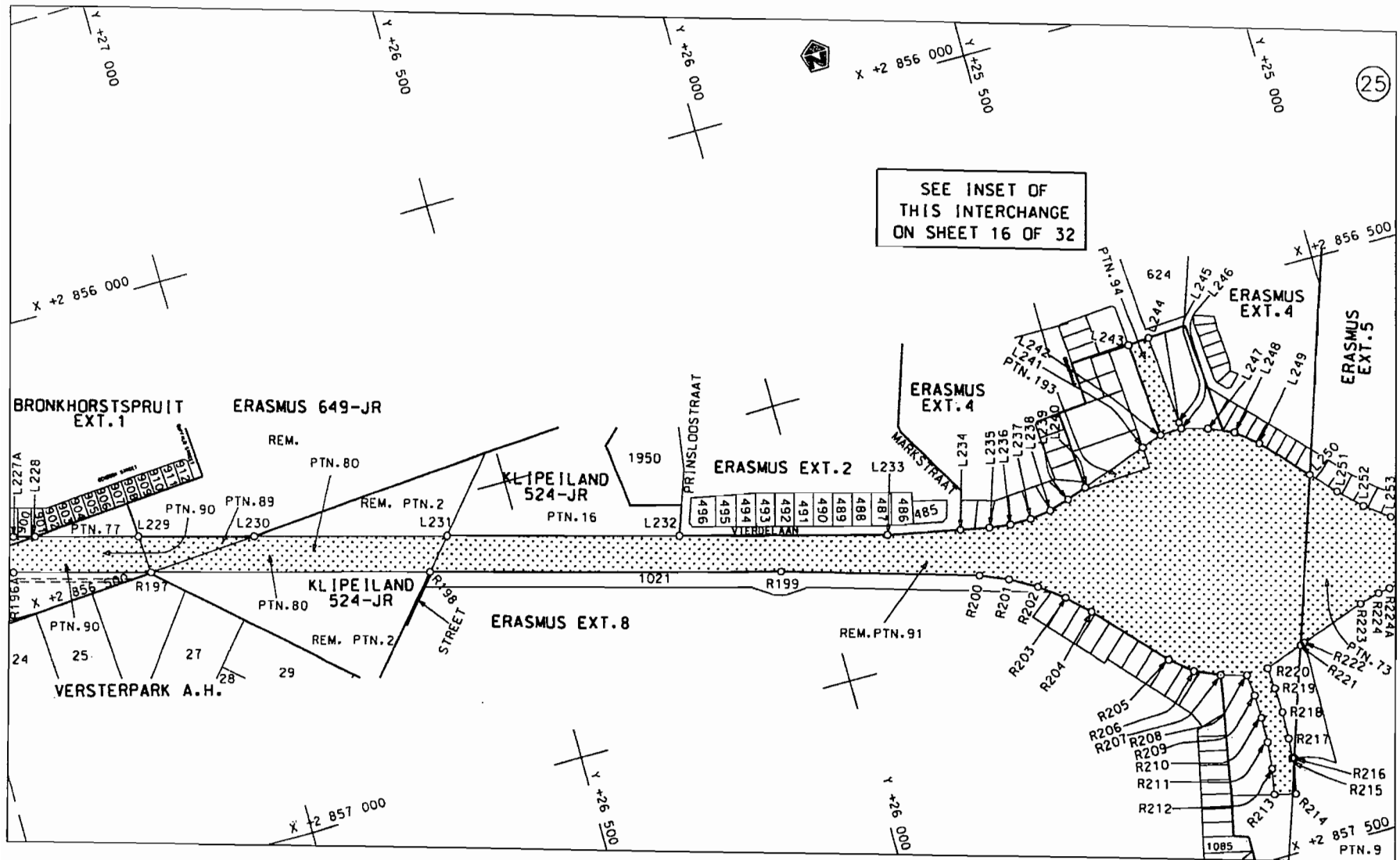
Die figuur getoon  
The figure shown



stel die padreserwe voor van 'n gedeelte  
represents the road reserve of a portion  
van Nasionale Roete N4  
of National Route N4  
Seksie 2  
Section

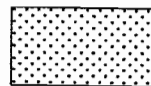
Vel Sheet 14 van 32  
Plan P567/06

D.O.9.A



Die Suid Afrikaanse Nasionale Padagentskap Beperk  
The South African National Roads Agency Limited

Die figuur getoon  
The figure shown



steldie padreserwé voor van 'n gedeelte  
represents the road reserve of a portion  
von Nasionale Roete  
of National Route

N4

Seksie  
Section

2

Vel  
Sheet

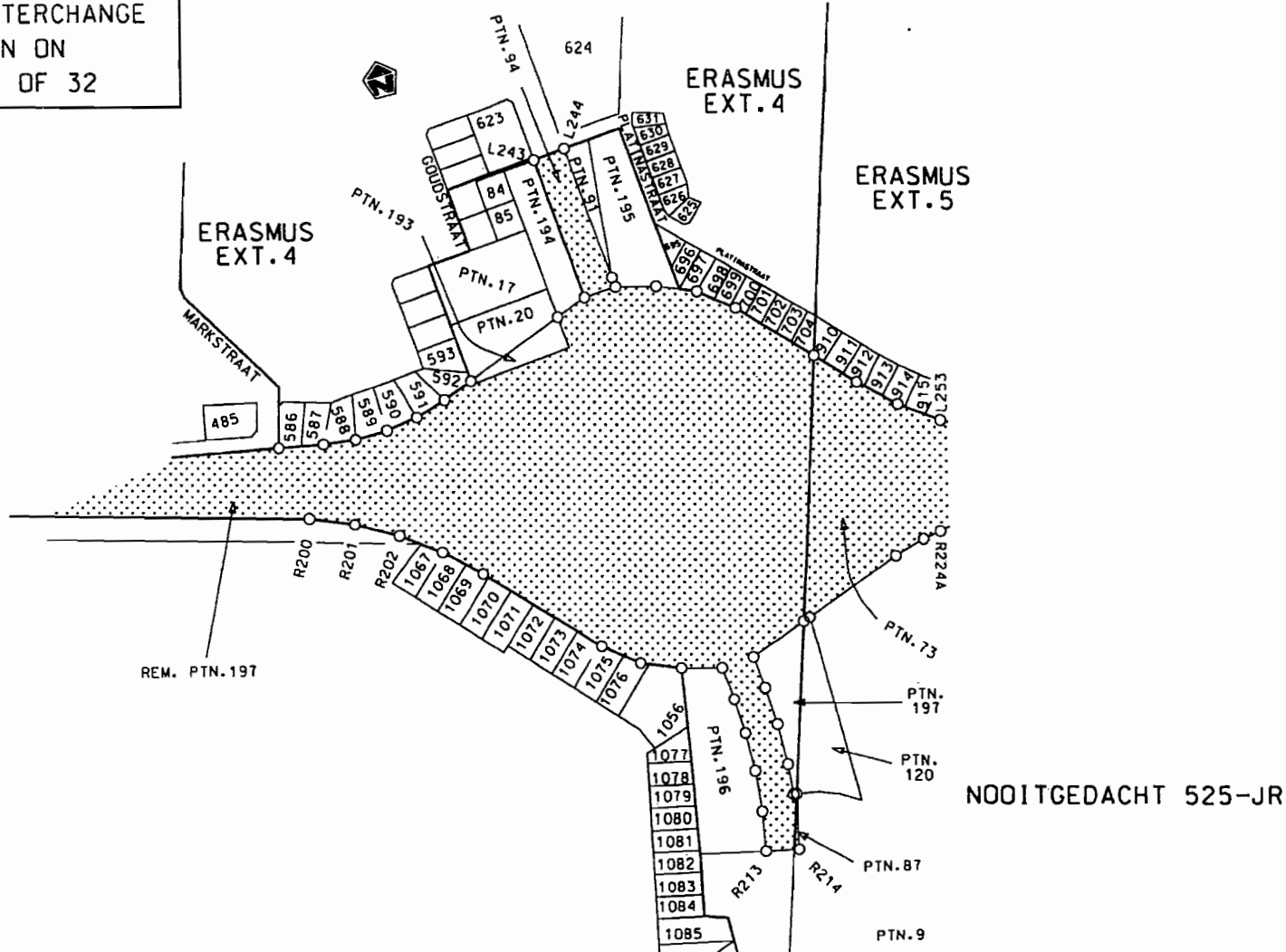
15  
of

P567/06

D.O.9.A

INSET OF INTERCHANGE  
AS SEEN ON  
SHEET 15 OF 32

(26)



Die Suid Afrikaanse Nasionale Padagentskap Beperk  
The South African National Roads Agency Limited

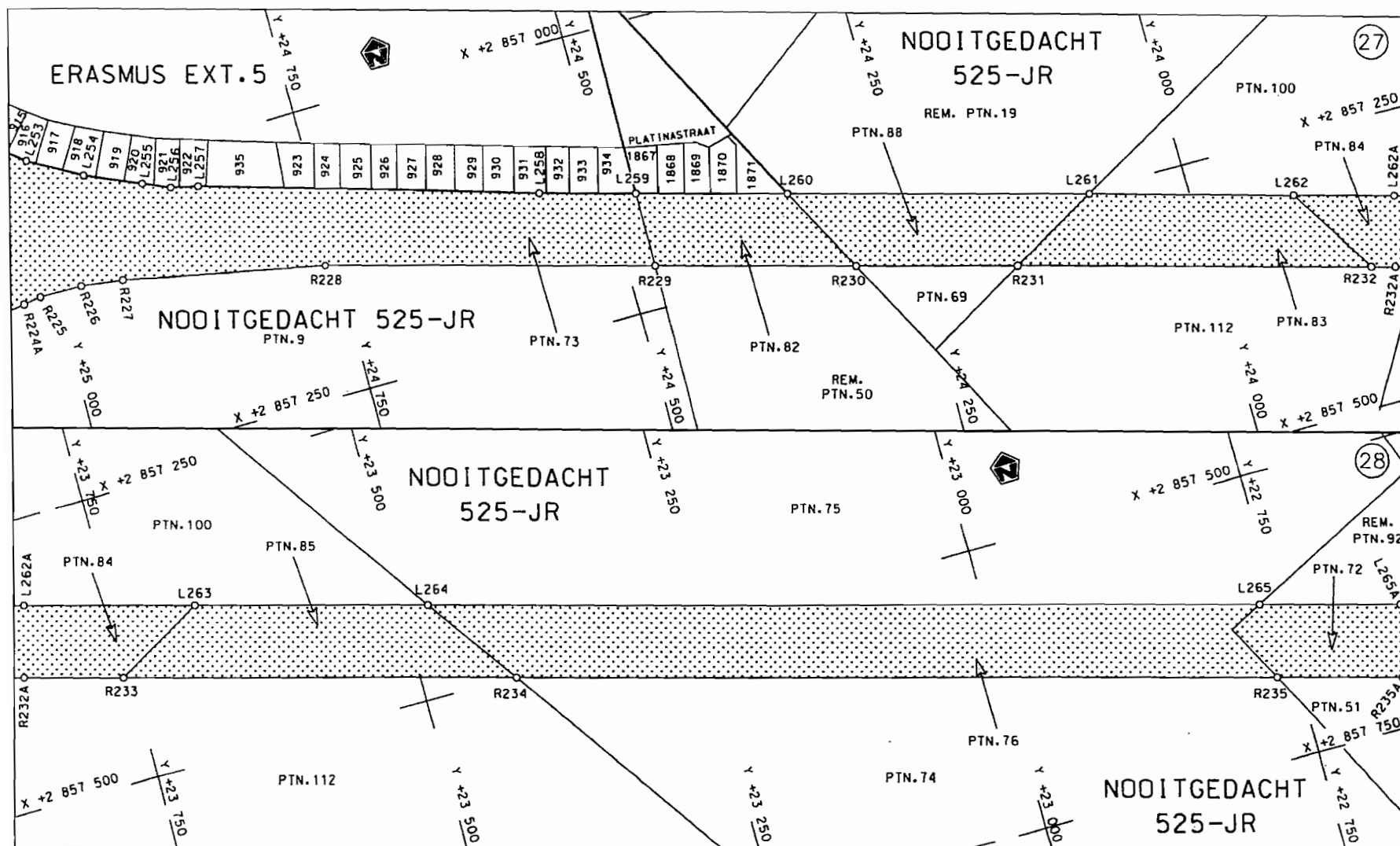
Die figuur getoon  
The figure shown



steld die padreserwe voor van 'n gedeelte  
represents the road reserve of a portion  
van Nasionale Roete of National Route N4  
Seksie Section 2

Vel  
Sheet 16 van  
of 32  
Plan P567/06

D.O.9.A



Die Suid Afrikaanse Nasionale Padagentskap Beperk  
The South African National Roads Agency Limited

Die figuur getoon  
The figure shown



stel die podreserwe voor van 'n gedeelte  
represents the road reserve of a portion  
van Nasionale Roete N4  
of National Route N4

Seksie

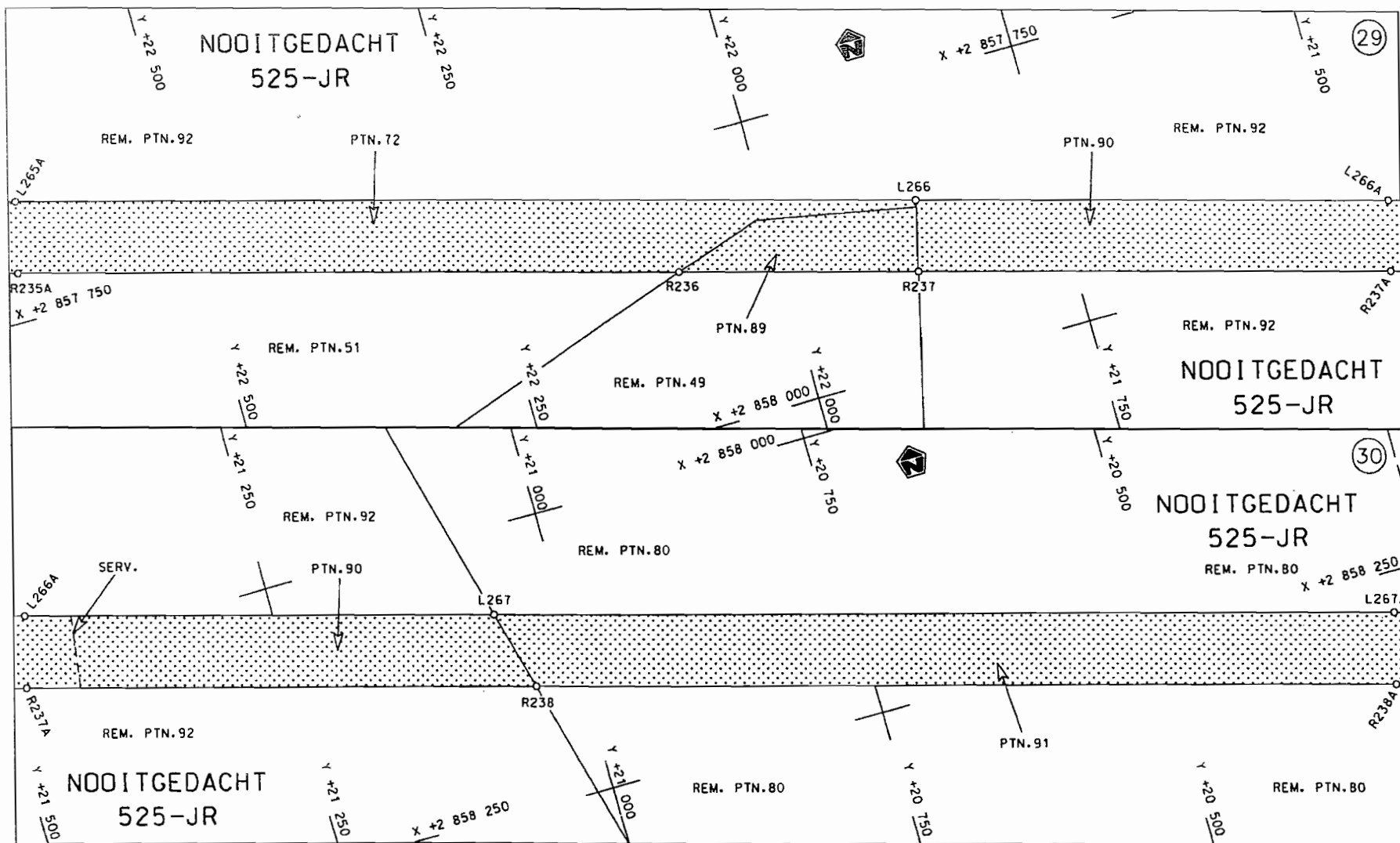
Section

2

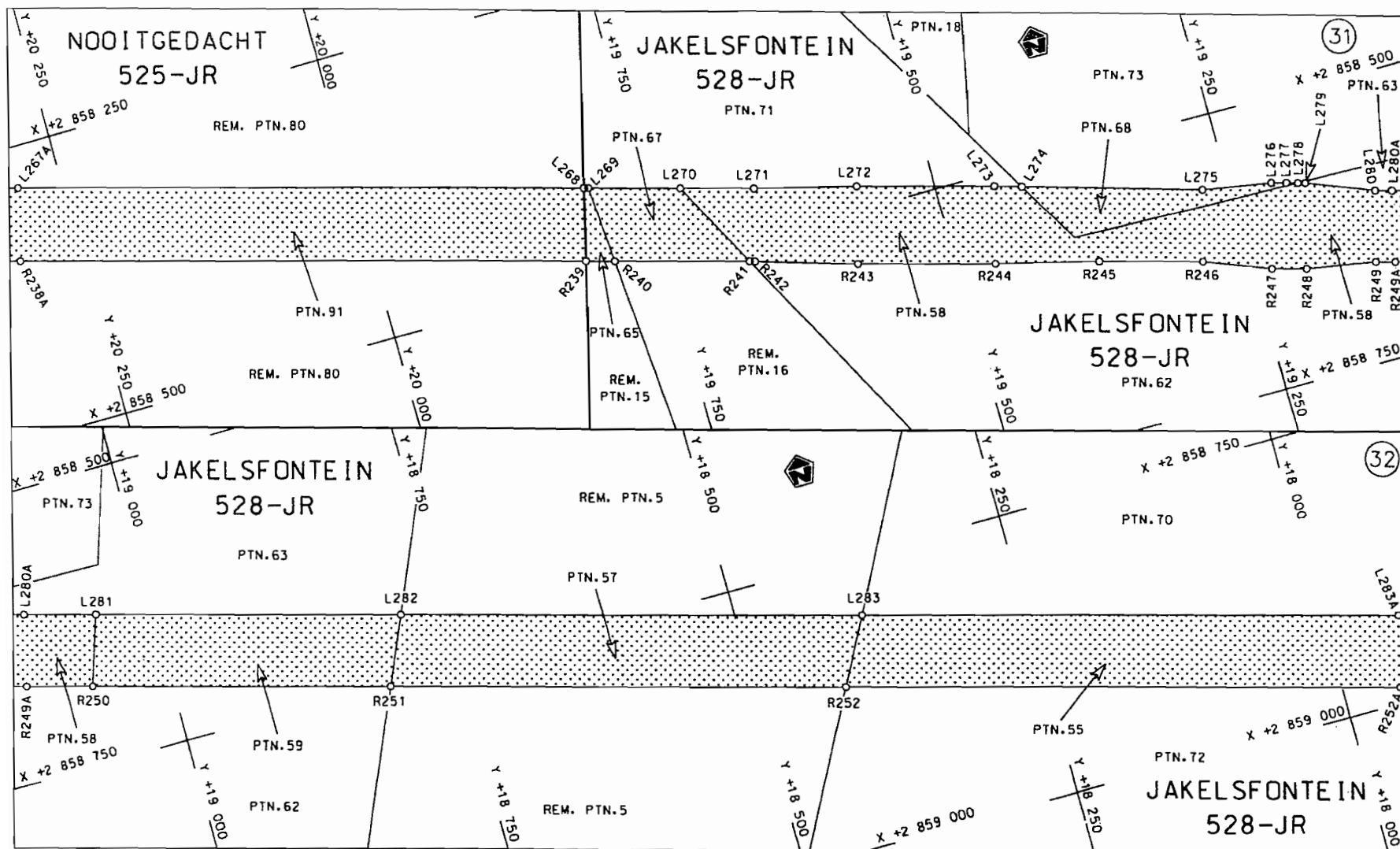
Vel  
Sheet 17 van 32

Plan  
P567/06

D.O.9.A

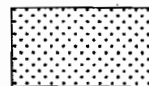


<p>Die Suid Afrikaanse Nasionale Padagentskap Beperk</p> <p>The South African National Roads Agency Limited</p>	<p>Die figuur getoon</p> <p>The figure shown</p> <div data-bbox="978 1275 1131 1358" data-label="Image"> </div>	<p>steldie padreserwe voor van 'n gedeelte</p> <p>represents the road reserve of a portion</p> <p>van Nasionale Roete N4</p> <p>of National Route N4</p> <p>Seksie 2</p> <p>Section 2</p>	<p>Vel Sheet 18 van of 32</p> <p>Plan P567/06</p>
---	---	---	---



Die Suid Afrikaanse Nasionale Padagentskop Beperk  
The South African National Roads Agency Limited

Die figuur getoon  
The figure shown



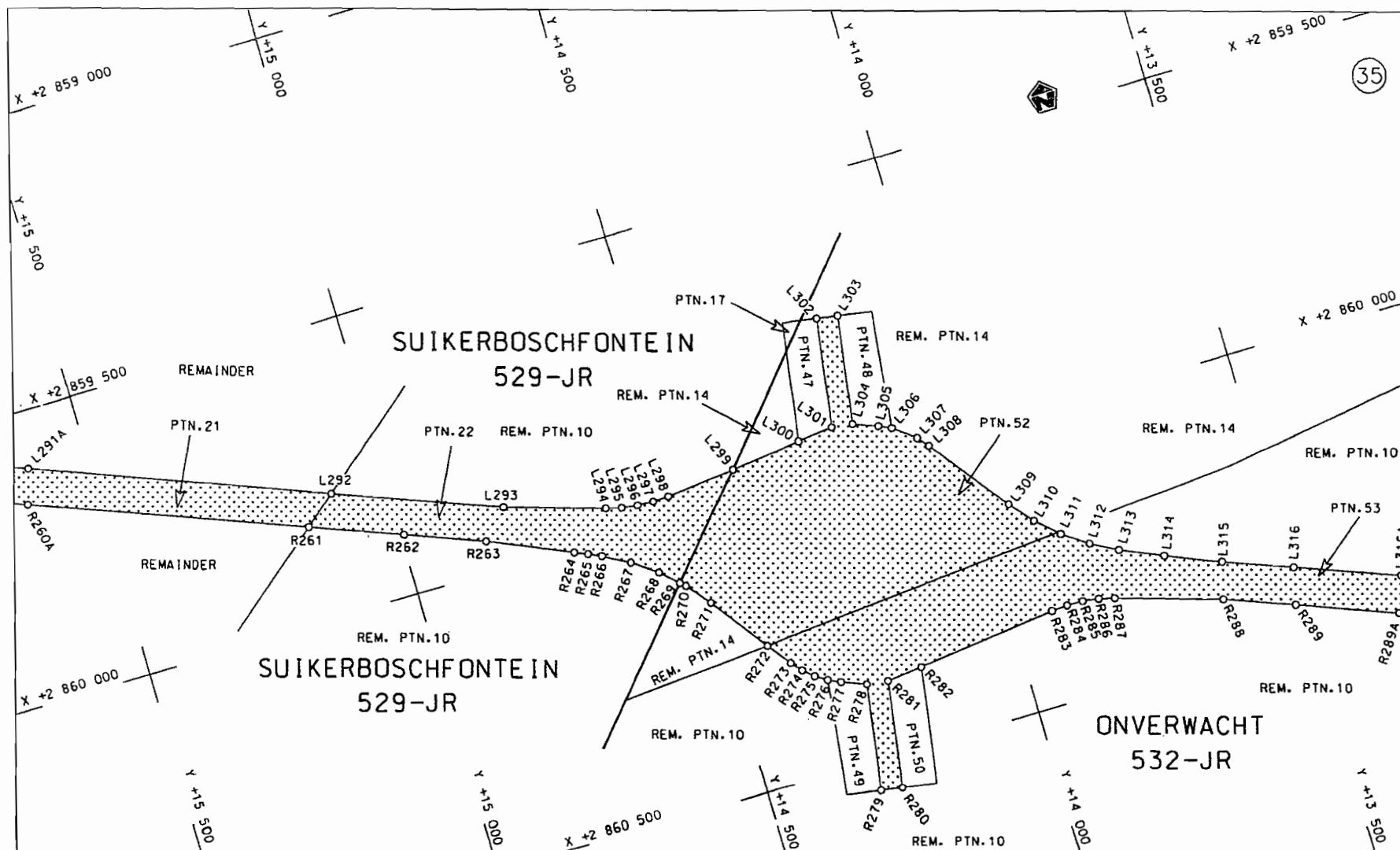
stel die padreserwe voor van 'n gedeelte  
represents the road reserve of a portion  
van Nasionale Roete N4  
of National Route N4

Seksie  
Section. 2

Vel  
Sheet 19 van 32

Plan  
P567/06





Die Suid Afrikaanse Nasionale Padagentskap Beperk  
The South African National Roads Agency Limited

Die figuur getoon  
The figure shown

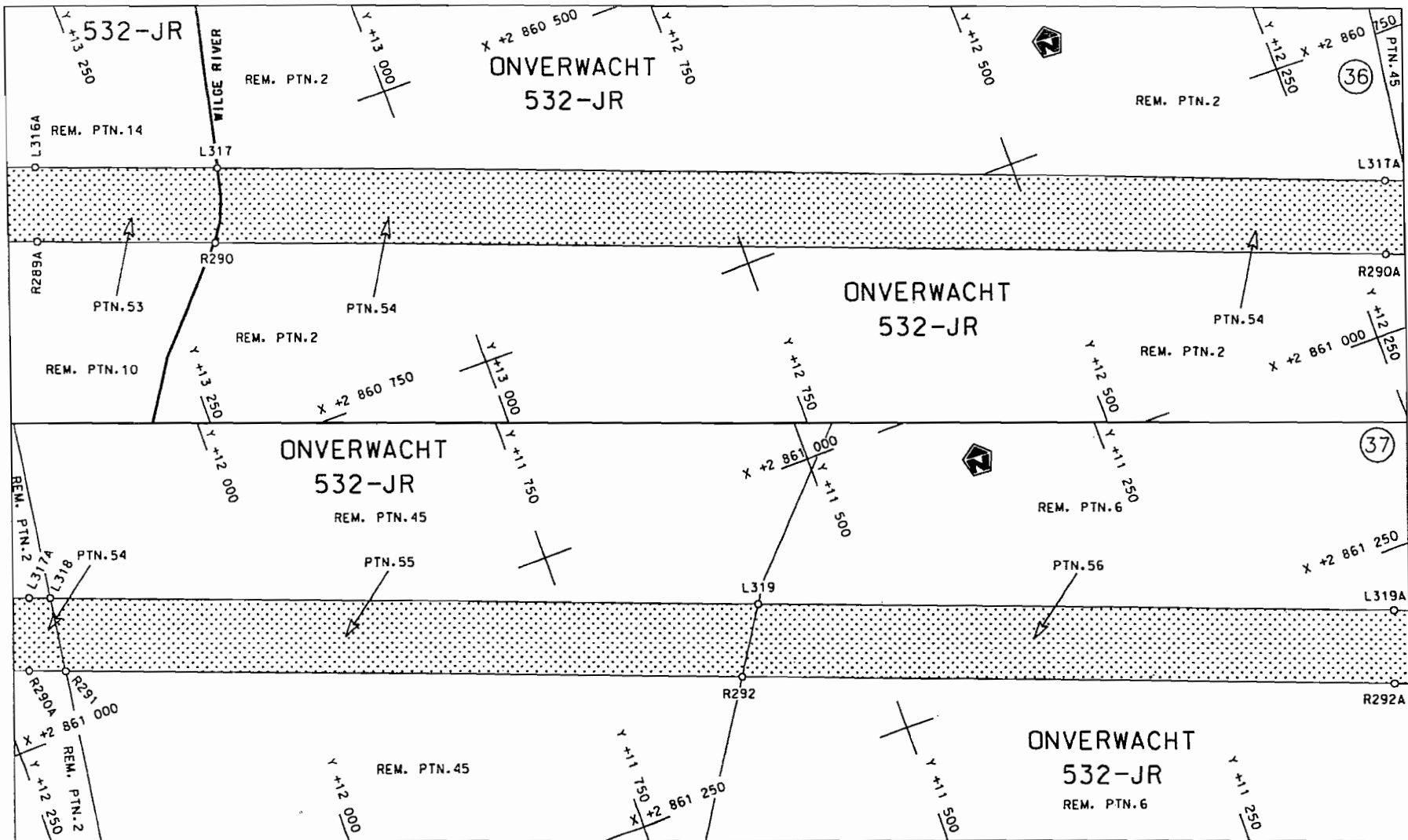


steldie padreserwe voor van 'n gedeelte  
represents the road reserve of a portion  
van Nasionale Roete N4 Seksie  
of National Route N4 Section

2

Vel  
Sheet 21 van 32  
Plan P567/06

D.O.9.A

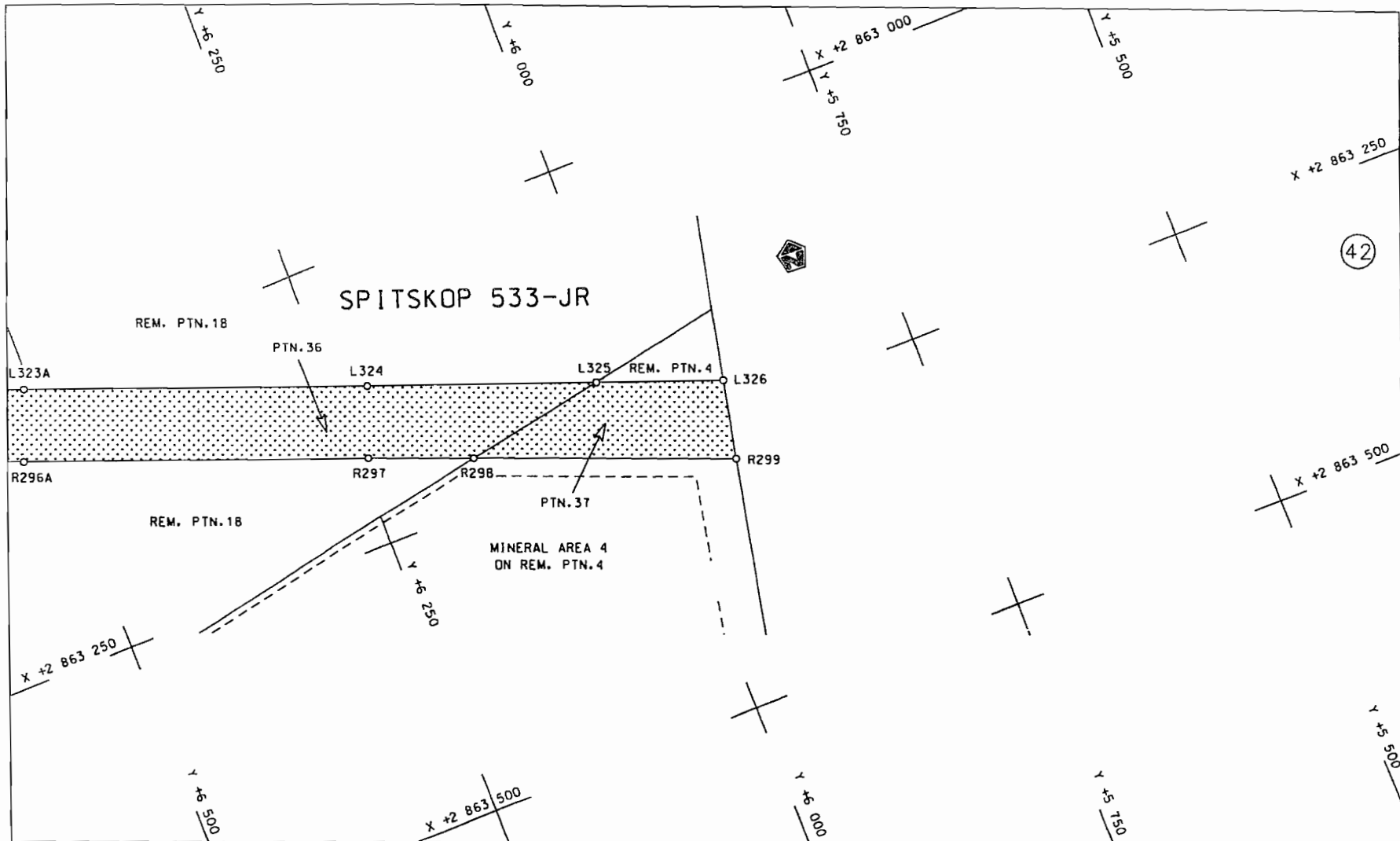


<p>Die Suid Afrikaanse Nasionale Padagentskap Beperk</p> <p>The South African National Roads Agency Limited</p>	<p>Die figuur getoon</p> <p>The figure shown</p> <div data-bbox="989 1267 1137 1347" data-label="Image"> </div>	<p>steeldie padreserwe voor van 'n gedeelte</p> <p>represents the road reserve of a portion</p> <p>van Nasionale Roete N4</p> <p>of National Route N4</p> <p>Seksie 2</p> <p>Section</p>	<p>Vel 22 van 32</p> <p>Plan P567/06</p>
---	---	--	--

D.O.9.A







Die Suid Afrikaanse Nasionale Padagentskop Beperk  
The South African National Roads Agency Limited

Die figuur getoon  
The figure shown



steldie podreserwe voor van 'n gedeelte  
represents the road reserve of a portion  
van Nasionale Roete N4  
of National Route N4

Seksie 2  
Section

Vel  
Sheet 25 van 32  
of

Plan P567/06

D.O.9.A

PADRESERWE KOÖRDINATE				/	ROAD RESERVE CO-ORDINATES			
LINKERKANT/LEFT HAND SIDE					REGTERKANT/RIGHT HAND SIDE			
	Y	X	WG	29		Y	X	
L1	58 900.79	2 851 442.56			R1	58 924.89	2 851 502.40	
L2	58 886.81	2 851 445.54			R2	58 718.50	2 851 546.59	
L3	58 691.53	2 851 487.33			R3	58 649.39	2 851 561.39	
L4	58 590.63	2 851 508.91			R4	58 603.94	2 851 571.12	
L5	58 498.09	2 851 527.99			R5	58 510.46	2 851 590.52	
L6	58 482.09	2 851 531.18			R6	58 506.46	2 851 591.29	
L7	58 312.06	2 851 562.32			R7	58 416.67	2 851 608.50	
L8	58 254.75	2 851 571.67			R8	58 322.58	2 851 625.18	
L9	58 218.54	2 851 577.71			R9	58 256.33	2 851 635.97	
L10	57 982.75	2 851 614.32			R10	58 228.28	2 851 640.58	
L11	57 870.10	2 851 631.81			R11	58 003.45	2 851 675.35	
L12	57 688.04	2 851 660.08			R12	57 869.74	2 851 696.22	
L13	57 632.13	2 851 667.07			R13	57 633.94	2 851 732.90	
L14	57 599.87	2 851 671.10			R14	57 396.45	2 851 769.85	
L15	57 500.96	2 851 689.14			R15	57 341.09	2 851 778.46	
L16	57 399.05	2 851 705.00			R16	57 057.42	2 851 830.94	
L17	57 319.65	2 851 717.36			R17	56 945.04	2 851 872.29	
L18	57 183.73	2 851 727.55			R18	56 873.57	2 851 903.65	
L19	57 078.37	2 851 726.83			R19	56 828.07	2 851 923.56	
L20	57 022.13	2 851 712.88			R20	56 822.64	2 851 952.34	
L21	56 948.75	2 851 683.12			R21	56 830.56	2 852 031.66	
L22	56 892.49	2 851 660.58			R22	56 810.81	2 852 087.32	
L23	56 848.75	2 851 649.28			R23	56 796.63	2 852 080.73	
L24	56 784.48	2 851 641.69			R24	56 790.28	2 852 003.80	
L25	56 762.47	2 851 620.79			R25	56 780.12	2 851 961.08	
L26	56 740.99	2 851 484.20			R26	56 759.47	2 851 939.87	
L27	56 721.86	2 851 473.36			R27	56 653.53	2 851 919.25	
L28	56 714.42	2 851 482.08			R28	56 528.24	2 851 918.54	
L29	56 738.17	2 851 628.08			R29	56 458.09	2 851 923.49	
L30	56 726.01	2 851 656.40			R30	56 366.97	2 851 929.86	
L31	56 636.39	2 851 728.24			R31	56 326.24	2 851 936.21	
L32	56 591.62	2 851 764.28			R32	55 886.01	2 852 004.42	
L33	56 442.94	2 851 844.44			R33	55 782.66	2 852 020.46	
L34	56 396.65	2 851 853.68			R34	55 714.23	2 852 031.13	
L35	56 232.70	2 851 886.20			R35	55 179.50	2 852 114.23	
L36	55 925.37	2 851 933.96			R36	54 952.92	2 852 151.70	
L37	55 827.50	2 851 949.21			R37	54 888.95	2 852 161.32	
L38	55 658.57	2 851 975.41			R38	54 817.37	2 852 171.89	
L39	55 122.53	2 852 058.70			R39	54 744.30	2 852 182.73	
L40	55 038.77	2 852 071.82			R40	54 599.66	2 852 204.22	
L41	54 942.13	2 852 086.79			R41	54 480.75	2 852 222.68	
L42	54 830.06	2 852 104.22			R42	54 044.05	2 852 290.46	
L43	54 543.26	2 852 148.74			R43	53 896.38	2 852 313.34	
L44	54 520.80	2 852 152.29			R44	53 753.44	2 852 335.63	
L45	54 026.93	2 852 228.87			R45	53 677.72	2 852 347.28	
L46	53 867.18	2 852 253.66			R46	53 607.23	2 852 358.36	
L47	53 708.19	2 852 278.33			R47	53 337.21	2 852 400.30	
L48	53 633.60	2 852 289.90			R48	53 027.94	2 852 448.35	
L49	53 563.03	2 852 300.85			R49	52 984.70	2 852 456.80	
L50	53 297.61	2 852 342.39			R50	52 878.15	2 852 481.60	
L51	53 035.21	2 852 383.43			R51	52 793.57	2 852 509.45	
					Vel	26	Van	32
					Sheet		of	
					P567/06			

PADRESERWE KOÖRDINATE				/	ROAD RESERVE CO-ORDINATES			
LINKERKANT/LEFT HAND SIDE					REGTERKANT/RIGHT HAND SIDE			
	Y	X	WG	29		Y	X	
L52	52 990.93	2 852 390.16		R52	52 711.33	2 852 543.90		
L53	52 974.26	2 852 392.75		R53	52 636.85	2 852 592.36		
L54	52 860.25	2 852 419.42		R54	52 567.70	2 852 634.92		
L55	52 771.23	2 852 448.69		R55	52 558.11	2 852 641.55		
L56	52 684.26	2 852 485.03		R56	52 540.47	2 852 641.10		
L57	52 601.02	2 852 528.60		R57	52 021.97	2 853 016.84		
L58	52 512.65	2 852 584.06		R58	51 964.78	2 853 058.25		
L59	52 455.15	2 852 610.03		R59	51 704.21	2 853 247.32		
L60	52 446.12	2 852 617.33		R60	51 266.17	2 853 564.98		
L61	52 448.33	2 852 633.48		R61	50 981.55	2 853 771.30		
L62	52 402.60	2 852 667.38		R62	50 905.47	2 853 826.32		
L63	52 358.94	2 852 699.75		R63	50 756.43	2 853 934.33		
L64	52 329.66	2 852 715.33		R64	50 732.39	2 853 955.77		
L65	51 892.92	2 853 031.86		R65	50 536.13	2 854 094.03		
L66	51 687.21	2 853 181.09		R66	50 483.98	2 854 131.79		
L67	51 685.31	2 853 173.84		R67	50 321.71	2 854 249.41		
L68	51 636.94	2 853 203.37		R68	50 271.42	2 854 285.23		
L69	51 506.87	2 853 301.42		R69	50 180.31	2 854 341.90		
L70	51 434.36	2 853 364.41		R70	50 111.88	2 854 376.91		
L71	51 254.52	2 853 494.63		R71	50 065.48	2 854 398.45		
L72	51 137.80	2 853 579.47		R72	50 009.65	2 854 420.69		
L73	50 957.20	2 853 710.13		R73	49 920.13	2 854 449.82		
L74	50 883.16	2 853 763.95		R74	49 829.51	2 854 471.79		
L75	50 735.29	2 853 871.06		R75	49 736.80	2 854 486.57		
L76	50 546.13	2 854 008.39		R76	49 645.18	2 854 493.93		
L77	50 517.33	2 854 029.24		R77	49 583.41	2 854 495.45		
L78	50 422.12	2 854 098.19		R78	49 074.29	2 854 504.36		
L79	50 363.19	2 854 134.57		R79	49 002.48	2 854 506.56		
L80	50 343.87	2 854 148.46		R80	48 882.24	2 854 522.08		
L81	50 232.94	2 854 228.55		R81	48 770.36	2 854 565.69		
L82	50 148.32	2 854 283.45		R82	48 576.04	2 854 678.40		
L83	50 094.52	2 854 311.66		R83	48 515.70	2 854 713.46		
L84	50 041.03	2 854 336.41		R84	48 505.13	2 854 737.38		
L85	49 987.17	2 854 357.88		R85	48 553.22	2 854 850.06		
L86	49 898.80	2 854 386.60		R86	48 519.10	2 854 867.32		
L87	49 816.96	2 854 409.31		R87	48 467.18	2 854 745.46		
L88	49 729.24	2 854 423.41		R88	48 448.75	2 854 732.53		
L89	49 642.52	2 854 430.38		R89	48 377.53	2 854 733.61		
L90	49 582.34	2 854 431.77		R90	48 306.00	2 854 704.24		
L91	49 065.11	2 854 439.96		R91	48 241.20	2 854 643.51		
L92	49 014.56	2 854 440.63		R92	48 124.89	2 854 560.20		
L93	48 898.33	2 854 431.44		R93	47 984.22	2 854 530.32		
L94	48 747.62	2 854 401.45		R94	47 868.00	2 854 522.26		
L95	48 636.21	2 854 319.22		R95	47 607.20	2 854 526.37		
L96	48 627.75	2 854 312.98		R96	47 121.52	2 854 534.06		
L97	48 608.64	2 854 293.54		R97	47 062.67	2 854 534.97		
L98	48 519.76	2 854 203.12		R98	46 698.36	2 854 540.65		
L99	48 441.26	2 854 171.72		R99	46 246.87	2 854 547.75		
L100	48 370.75	2 854 173.33		R100	45 796.66	2 854 554.82		
L101	48 352.89	2 854 159.77		R101	45 428.90	2 854 560.57		
L102	48 340.30	2 854 112.57		R102	45 429.38	2 854 591.45		
				Vel	27	Van	32	P567/06
				Sheet		of		

PADRESERWE KOÖRDINATE				/	ROAD RESERVE CO-ORDINATES			
LINKERKANT/LEFT HAND SIDE					REGTERKANT/RIGHT HAND SIDE			
	Y	X	WG 29		Y	X		
L103	48 282.57	2 853 889.66		R103	45 216.57	2 854 638.00		
L104	48 243.47	2 853 890.47		R104	45 151.11	2 854 704.67		
L105	48 315.83	2 854 167.97		R105	45 044.93	2 854 705.70		
L106	48 308.67	2 854 189.31		R106	44 945.19	2 854 609.78		
L107	48 203.72	2 854 249.54		R107	44 599.62	2 854 573.59		
L108	47 937.56	2 854 402.27		R108	44 183.16	2 854 580.12		
L109	47 900.18	2 854 420.12		R109	43 798.12	2 854 586.13		
L110	47 817.70	2 854 447.91		R110	43 583.52	2 854 597.21		
L111	47 604.68	2 854 460.73		R111	43 482.24	2 854 634.89		
L112	46 642.65	2 854 477.97		R112	43 377.33	2 854 743.41		
L113	46 208.37	2 854 484.73		R113	43 251.03	2 854 745.55		
L114	45 774.67	2 854 491.47		R114	43 136.49	2 854 634.33		
L115	45 574.16	2 854 494.55		R115	42 795.73	2 854 601.84		
L116	45 351.85	2 854 470.07		R116	42 425.70	2 854 607.64		
L117	45 178.32	2 854 450.97		R117	42 131.86	2 854 612.15		
L118	45 010.67	2 854 453.58		R118	41 820.03	2 854 617.10		
L119	44 762.45	2 854 507.15		R119	41 718.32	2 854 618.63		
L120	44 662.67	2 854 508.73		R120	41 435.68	2 854 623.04		
L121	44 209.40	2 854 515.76		R121	40 813.36	2 854 632.89		
L122	43 765.16	2 854 522.64		R122	40 672.55	2 854 634.93		
L123	43 764.70	2 854 521.51		R123	40 560.30	2 854 636.74		
L124	43 592.33	2 854 503.42		R124	40 194.60	2 854 642.44		
L125	43 438.78	2 854 487.30		R125	39 982.69	2 854 645.72		
L126	43 327.18	2 854 378.93		R126	39 666.51	2 854 650.67		
L127	43 195.33	2 854 380.87		R127	39 299.31	2 854 658.00		
L128	43 080.06	2 854 499.55		R128	39 248.08	2 854 658.98		
L129	43 030.39	2 854 521.84		R129	39 128.42	2 854 674.14		
L130	42 859.65	2 854 535.47		R130	39 025.84	2 854 714.85		
L131	42 466.50	2 854 536.45		R131	38 982.07	2 854 741.84		
L132	42 352.31	2 854 539.18		R132	38 605.96	2 854 969.31		
L133	42 238.20	2 854 542.02		R133	38 561.07	2 854 996.02		
L134	42 124.09	2 854 544.89		R134	38 496.98	2 855 035.97		
L135	42 009.26	2 854 547.75		R135	38 483.89	2 855 063.65		
L136	41 894.47	2 854 550.66		R136	38 485.67	2 855 187.51		
L137	41 779.92	2 854 553.69		R137	38 460.74	2 855 188.65		
L138	41 717.32	2 854 555.05		R138	38 458.74	2 855 064.96		
L139	40 803.05	2 854 569.22		R139	38 440.89	2 855 041.79		
L140	40 777.53	2 854 569.62		R140	38 375.28	2 855 025.20		
L141	40 744.36	2 854 570.19		R141	38 315.22	2 854 985.62		
L142	40 559.56	2 854 573.16		R142	38 196.19	2 854 839.27		
L143	40 193.83	2 854 577.65		R143	38 134.44	2 854 772.41		
L144	39 717.75	2 854 583.43		R144	38 061.70	2 854 723.88		
L145	39 604.95	2 854 585.23		R145	37 985.61	2 854 696.70		
L146	39 506.54	2 854 586.71		R146	37 909.88	2 854 687.28		
L147	39 462.22	2 854 590.27		R147	37 798.78	2 854 679.80		
L148	39 386.24	2 854 591.47		R148	37 451.28	2 854 685.35		
L149	39 094.50	2 854 595.96		R149	37 175.03	2 854 689.66		
L150	39 035.36	2 854 596.97		R150	37 147.49	2 854 689.90		
L151	38 911.94	2 854 589.78		R151	36 454.03	2 854 700.71		
L152	38 776.69	2 854 562.16		R152	33 849.60	2 854 741.30		
L153	38 661.79	2 854 483.90		R153	33 825.98	2 854 742.21		
				Vel	28	Van	32	P567/06
				Sheet		of		

PADRESERWE KOÖRDINATE				/	ROAD RESERVE CO-ORDINATES			
LINKERKANT/LEFT HAND SIDE					REGTERKANT/RIGHT HAND SIDE			
	Y	X	WG	29		Y	X	
L154	38 574.72	2 854 408.64		R154	33 735.39	2 854 745.70		
L155	38 546.39	2 854 402.19		R155	33 616.58	2 854 756.28		
L156	38 490.76	2 854 387.57		R156	33 497.22	2 854 773.37		
L157	38 472.88	2 854 367.64		R157	33 378.58	2 854 796.93		
L158	38 471.88	2 854 316.60		R158	33 279.94	2 854 821.29		
L159	38 469.33	2 854 161.19		R159	32 363.43	2 855 070.33		
L160	38 444.16	2 854 161.44		R160	32 202.14	2 855 114.15		
L161	38 446.69	2 854 317.27		R161	32 184.24	2 855 119.03		
L162	38 447.56	2 854 360.24		R162	31 940.45	2 855 185.31		
L163	38 442.14	2 854 376.29		R163	31 889.97	2 855 201.53		
L164	38 430.52	2 854 393.41		R164	31 784.60	2 855 230.09		
L165	38 371.81	2 854 429.06		R165	31 537.35	2 855 297.11		
L166	38 172.80	2 854 549.89		R166	31 292.97	2 855 363.44		
L167	38 123.05	2 854 570.42		R167	31 188.52	2 855 395.47		
L168	38 063.85	2 854 594.93		R168	31 058.59	2 855 433.53		
L169	37 948.94	2 854 609.69		R169	30 944.26	2 855 477.42		
L170	37 784.81	2 854 616.42		R170	30 843.80	2 855 552.46		
L171	37 196.42	2 854 625.66		R171	30 722.15	2 855 674.64		
L172	36 459.68	2 854 637.27		R172	30 641.76	2 855 755.50		
L173	35 988.92	2 854 644.61		R173	30 593.84	2 855 803.88		
L174	35 957.23	2 854 640.52		R174	30 581.24	2 855 837.54		
L175	35 500.01	2 854 647.67		R175	30 617.57	2 855 971.85		
L176	35 470.91	2 854 652.53		R176	30 593.35	2 855 978.89		
L177	34 067.87	2 854 674.49		R177	30 568.77	2 855 888.54		
L178	33 906.30	2 854 676.91		R178	30 563.44	2 855 868.87		
L179	33 848.64	2 854 677.77		R179	30 556.70	2 855 844.03		
L180	33 731.33	2 854 682.33		R180	30 545.35	2 855 824.29		
L181	33 608.36	2 854 693.48		R181	30 472.27	2 855 825.64		
L182	33 485.89	2 854 711.01		R182	30 444.66	2 855 824.11		
L183	33 364.57	2 854 734.99		R183	30 319.65	2 855 759.31		
L184	33 263.34	2 854 760.13		R184	30 188.21	2 855 709.12		
L185	32 471.79	2 854 975.15		R185	30 122.80	2 855 705.95		
L186	32 440.72	2 854 979.37		R186	30 098.25	2 855 706.96		
L187	32 375.04	2 854 997.23		R187	29 977.90	2 855 728.46		
L188	32 227.17	2 855 037.45		R188	29 906.79	2 855 741.17		
L189	32 199.96	2 855 048.99		R189	29 556.88	2 855 836.26		
L190	32 079.10	2 855 081.80		R190	29 547.20	2 855 835.50		
L191	32 031.26	2 855 094.79		R191	29 379.62	2 855 881.02		
L192	31 785.82	2 855 161.43		R192	28 018.39	2 856 250.96		
L193	31 538.68	2 855 228.59		R193	27 941.69	2 856 275.57		
L194	31 040.91	2 855 363.83		R194	27 909.74	2 856 283.64		
L195	30 935.75	2 855 382.61		R195	27 842.72	2 856 298.53		
L196	30 790.38	2 855 388.93		R196	27 534.38	2 856 382.30		
L197	30 670.82	2 855 344.78		R197	27 156.34	2 856 485.26		
L198	30 655.53	2 855 339.13		R198	26 671.92	2 856 616.75		
L199	30 637.90	2 855 329.70		R199	26 065.17	2 856 781.39		
L200	30 562.09	2 855 288.00		R200	25 725.49	2 856 882.50		
L201	30 508.34	2 855 274.34		R201	25 676.87	2 856 903.12		
L202	30 447.50	2 855 271.14		R202	25 631.17	2 856 929.46		
L203	30 453.48	2 855 223.36		R203	25 588.94	2 856 961.07		
L204	30 483.84	2 855 191.84		R204	25 550.82	2 856 997.56		
				Vel	29	Van	32	P567/06
				Sheet		of		

PADRESERWE KOÖRDINATE				/	ROAD RESERVE CO-ORDINATES			
LINKERKANT/LEFT HAND SIDE					REGTERKANT/RIGHT HAND SIDE			
	Y	X	WG	29		Y	X	
L205	30 407.24	2 855 194.37			R205	25 442.08	2 857 115.28	
L206	30 379.77	2 855 195.38			R206	25 404.35	2 857 145.80	
L207	30 376.07	2 855 195.50			R207	25 360.37	2 857 164.68	
L208	30 260.72	2 855 199.22			R208	25 315.40	2 857 177.50	
L209	30 313.69	2 855 208.47			R209	25 312.47	2 857 215.37	
L210	30 330.68	2 855 225.57			R210	25 311.15	2 857 255.46	
L211	30 373.84	2 855 288.25			R211	25 312.58	2 857 299.00	
L212	30 378.30	2 855 304.43			R212	25 317.77	2 857 344.99	
L213	30 339.58	2 855 344.06			R213	25 326.19	2 857 388.57	
L214	30 247.67	2 855 438.13			R214	25 288.95	2 857 397.32	
L215	30 149.56	2 855 537.25			R215	25 274.35	2 857 336.87	
L216	30 142.43	2 855 544.53			R216	25 277.90	2 857 336.23	
L217	30 042.24	2 855 621.04			R217	25 274.68	2 857 302.52	
L218	29 924.45	2 855 667.10			R218	25 273.15	2 857 255.85	
L219	29 829.52	2 855 692.89			R219	25 274.67	2 857 212.78	
L220	28 228.62	2 856 127.88			R220	25 277.29	2 857 175.69	
L221	28 001.88	2 856 189.49			R221	25 210.10	2 857 152.72	
L222	27 914.98	2 856 208.63			R222	25 202.11	2 857 149.99	
L223	27 891.21	2 856 215.97			R223	25 086.20	2 857 110.19	
L224	27 863.82	2 856 224.87			R224	25 049.84	2 857 100.34	
L225	27 825.75	2 856 237.24			R225	25 012.47	2 857 095.37	
L226	27 588.24	2 856 301.67			R226	24 974.79	2 857 095.45	
L227	27 523.60	2 856 319.21			R227	24 937.46	2 857 100.37	
L228	27 339.94	2 856 369.19			R228	24 758.76	2 857 136.30	
L229	27 160.86	2 856 418.00			R229	24 475.61	2 857 213.23	
L230	26 960.08	2 856 472.54			R230	24 302.36	2 857 260.44	
L231	26 625.10	2 856 563.54			R231	24 164.23	2 857 297.90	
L232	26 223.93	2 856 672.30			R232	23 862.62	2 857 379.90	
L233	25 863.90	2 856 770.21			R233	23 756.68	2 857 408.72	
L234	25 736.05	2 856 795.88			R234	23 417.67	2 857 500.89	
L235	25 685.18	2 856 806.14			R235	22 767.47	2 857 677.50	
L236	25 647.89	2 856 811.17			R236	22 089.77	2 857 861.89	
L237	25 610.19	2 856 811.18			R237	21 883.97	2 857 917.77	
L238	25 572.85	2 856 806.20			R238	21 041.28	2 858 146.74	
L239	25 536.43	2 856 796.38			R239	19 817.33	2 858 479.27	
L240	25 500.87	2 856 784.18			R240	19 792.55	2 858 486.00	
L241	25 382.48	2 856 743.52			R241	19 676.64	2 858 517.51	
L242	25 345.76	2 856 730.91			R242	19 672.11	2 858 518.82	
L243	25 357.07	2 856 565.49			R243	19 584.40	2 858 544.88	
L244	25 319.13	2 856 562.84			R244	19 466.83	2 858 576.76	
L245	25 308.53	2 856 718.24			R245	19 378.05	2 858 598.73	
L246	25 307.76	2 856 729.46			R246	19 290.06	2 858 622.49	
L247	25 262.09	2 856 741.93			R247	19 232.85	2 858 644.34	
L248	25 218.31	2 856 760.64			R248	19 203.44	2 858 652.36	
L249	25 181.21	2 856 790.88			R249	19 143.00	2 858 662.45	
L250	25 110.49	2 856 867.27			R250	19 069.36	2 858 682.48	
L251	25 071.87	2 856 908.97			R251	18 812.32	2 858 752.39	
L252	25 033.37	2 856 945.84			R252	18 422.10	2 858 858.40	
L253	24 991.51	2 856 977.11			R253	17 861.28	2 859 010.74	
L254	24 945.98	2 857 003.20			R254	17 632.65	2 859 072.77	
L255	24 897.17	2 857 024.05			R255	17 270.02	2 859 171.35	
					Vel 30	Van 32	P567/06	
					Sheet	of		

PADRESERWE KOÖRDINATE				/	ROAD RESERVE CO-ORDINATES			
LINKERKANT/LEFT HAND SIDE					REGTERKANT/RIGHT HAND SIDE			
	Y	X	WG	29		Y	X	
L256	24 873.58	2 857 034.04		R256	16 512.29	2 859 377.11		
L257	24 849.71	2 857 039.42		R257	16 464.09	2 859 390.09		
L258	24 557.38	2 857 125.19		R258	16 171.59	2 859 469.65		
L259	24 474.30	2 857 147.76		R259	16 017.15	2 859 515.51		
L260	24 343.36	2 857 183.36		R260	15 864.90	2 859 568.52		
L261	24 085.36	2 857 253.50		R261	15 154.41	2 859 834.54		
L262	23 911.64	2 857 300.72		R262	14 994.20	2 859 894.52		
L263	23 677.79	2 857 364.30		R263	14 857.53	2 859 945.62		
L264	23 476.01	2 857 419.16		R264	14 711.85	2 860 006.93		
L265	22 764.95	2 857 612.33		R265	14 688.79	2 860 016.46		
L266	21 868.57	2 857 856.00		R266	14 665.95	2 860 026.65		
L267	21 059.99	2 858 075.76		R267	14 619.44	2 860 051.70		
L268	19 801.44	2 858 417.75		R268	14 576.35	2 860 082.16		
L269	19 797.72	2 858 418.76		R269	14 545.92	2 860 109.70		
L270	19 718.74	2 858 440.22		R270	14 537.21	2 860 117.58		
L271	19 655.60	2 858 457.42		R271	14 502.66	2 860 157.49		
L272	19 566.75	2 858 479.36		R272	14 427.41	2 860 255.67		
L273	19 449.13	2 858 511.23		R273	14 396.42	2 860 296.10		
L274	19 426.01	2 858 518.10		R274	14 380.50	2 860 314.06		
L275	19 272.99	2 858 561.44		R275	14 362.29	2 860 329.67		
L276	19 212.64	2 858 571.23		R276	14 342.08	2 860 342.57		
L277	19 199.65	2 858 574.76		R277	14 320.23	2 860 352.55		
L278	19 189.93	2 858 577.45		R278	14 277.46	2 860 368.58		
L279	19 183.56	2 858 579.18		R279	14 306.06	2 860 552.69		
L280	19 125.90	2 858 601.28		R280	14 268.44	2 860 558.48		
L281	19 049.36	2 858 622.10		R281	14 239.98	2 860 373.42		
L282	18 786.28	2 858 693.62		R282	14 176.36	2 860 366.56		
L283	18 390.86	2 858 801.00		R283	13 926.67	2 860 339.33		
L284	17 815.22	2 858 957.38		R284	13 898.25	2 860 337.69		
L285	17 651.04	2 859 001.89		R285	13 869.73	2 860 338.86		
L286	17 145.30	2 859 139.33		R286	13 841.40	2 860 342.91		
L287	16 537.89	2 859 304.29		R287	13 813.82	2 860 349.75		
L288	16 335.62	2 859 359.16		R288	13 630.92	2 860 404.97		
L289	16 154.91	2 859 408.26		R289	13 511.07	2 860 449.79		
L290	15 997.42	2 859 454.98		R290	13 189.49	2 860 570.25		
L291	15 842.59	2 859 508.86		R291	12 185.86	2 860 946.25		
L292	15 097.02	2 859 789.15		R292	11 621.96	2 861 157.50		
L293	14 810.66	2 859 896.79		R293	10 829.56	2 861 454.36		
L294	14 635.01	2 859 948.33		R294	8 655.11	2 862 269.00		
L295	14 607.42	2 859 955.22		R295	8 154.07	2 862 456.69		
L296	14 579.07	2 859 959.18		R296	7 339.71	2 862 761.78		
L297	14 550.56	2 859 960.36		R297	6 241.02	2 863 173.39		
L298	14 522.08	2 859 958.72		R298	6 153.40	2 863 207.08		
L299	14 398.06	2 859 945.20		R299	5 935.08	2 863 291.00		
L300	14 272.52	2 859 931.52						
L301	14 208.82	2 859 924.57						
L302	14 180.24	2 859 739.51						
L303	14 142.73	2 859 745.29						
L304	14 171.36	2 859 929.42						
L305	14 128.58	2 859 945.44						
L306	14 106.77	2 859 955.42						
				Vel	31	Van	32	P567/06
				Sheet		of		

PADRESERWE KOÖRDINATE				/	ROAD RESERVE CO-ORDINATES			
LINKERKANT/LEFT HAND SIDE					REGTERKANT/RIGHT HAND SIDE			
	Y	X	WG 29		Y	X		
L307	14 068.53	2 859 984.14						
L308	14 052.31	2 860 002.45						
L309	13 946.19	2 860 140.58						
L310	13 911.56	2 860 180.49						
L311	13 872.48	2 860 215.91						
L312	13 829.19	2 860 246.44						
L313	13 782.64	2 860 271.53						
L314	13 708.75	2 860 303.60						
L315	13 614.20	2 860 342.04						
L316	13 495.83	2 860 386.80						
L317	13 164.35	2 860 511.01						
L318	12 176.27	2 860 881.28						
L319	11 585.90	2 861 102.51						
L320	10 803.12	2 861 395.85						
L321	8 456.27	2 862 275.31						
L322	8 199.42	2 862 371.56						
L323	7 350.77	2 862 689.58						
L324	6 218.72	2 863 113.79						
L325	6 027.26	2 863 183.56						
L326	5 920.29	2 863 222.54						