

CONTENTS**INHOUD**

<i>No.</i>	<i>Page No.</i>	<i>Gazette No.</i>	<i>No.</i>	<i>Bladsy No.</i>	<i>Koerant No.</i>
GOVERNMENT NOTICE			GOEWERMENSKENNISGEWING		
Transport, Department of			Vervoer, Departement van		
<i>Government Notice</i>			<i>Goewermentskennisgewing</i>		
738			738		
South African National Roads Agency Limited and the National Roads Act (7/1998): Declaration amendment of National Road N2 Section 7X: Amendment of Declaration No. 2027 of 1990 and 1539 of 1990	..	3	30180	..	4
					30180

GOVERNMENT NOTICE
GOEWERMENTSKENNIISGEWING

DEPARTMENT OF TRANSPORT
DEPARTEMENT VAN VERVOER

No. 738

17 August 2007

DEPARTMENT OF TRANSPORT
**THE SOUTH AFRICAN NATIONAL ROADS
AGENCY LIMITED**


Registration No: 98/09584/06

DECLARATION AMENDMENT OF NATIONAL ROAD N2 SECTION 7X

AMENDMENT OF DECLARATION NO'S. 2027 OF 1990 AND 1539 OF 1990.

By virtue of section 40 (1)(b) of the South African National Roads Agency Limited and the National Roads Act, 1998 (Act NO.7 of 1998), I hereby amend the following declarations by substituting (I) the whole of Declaration No. 2027 of 1990 and (II) the section of Declaration No. 1539 of 1990 from points L163 and R144 on sheet 1 up to the eastern bank of the Swartvlei on sheet 3 of Plan No. P362/89, with the subjoined sheets 1 to 19 of Plan NO.P595/06.

(National Road N2 Section 7X: George Interchange - Swartvlei)



NIS

No. 738

17 Augustus 2007

DIE SUID-AFRIKAANSE NASIONALE PADAGENTSKAPBEPERK

Registrasie No: 98/09584/06

VERKLARING WYSIGING VAN NASIONALE PAD N2 SEKSIE 7X.

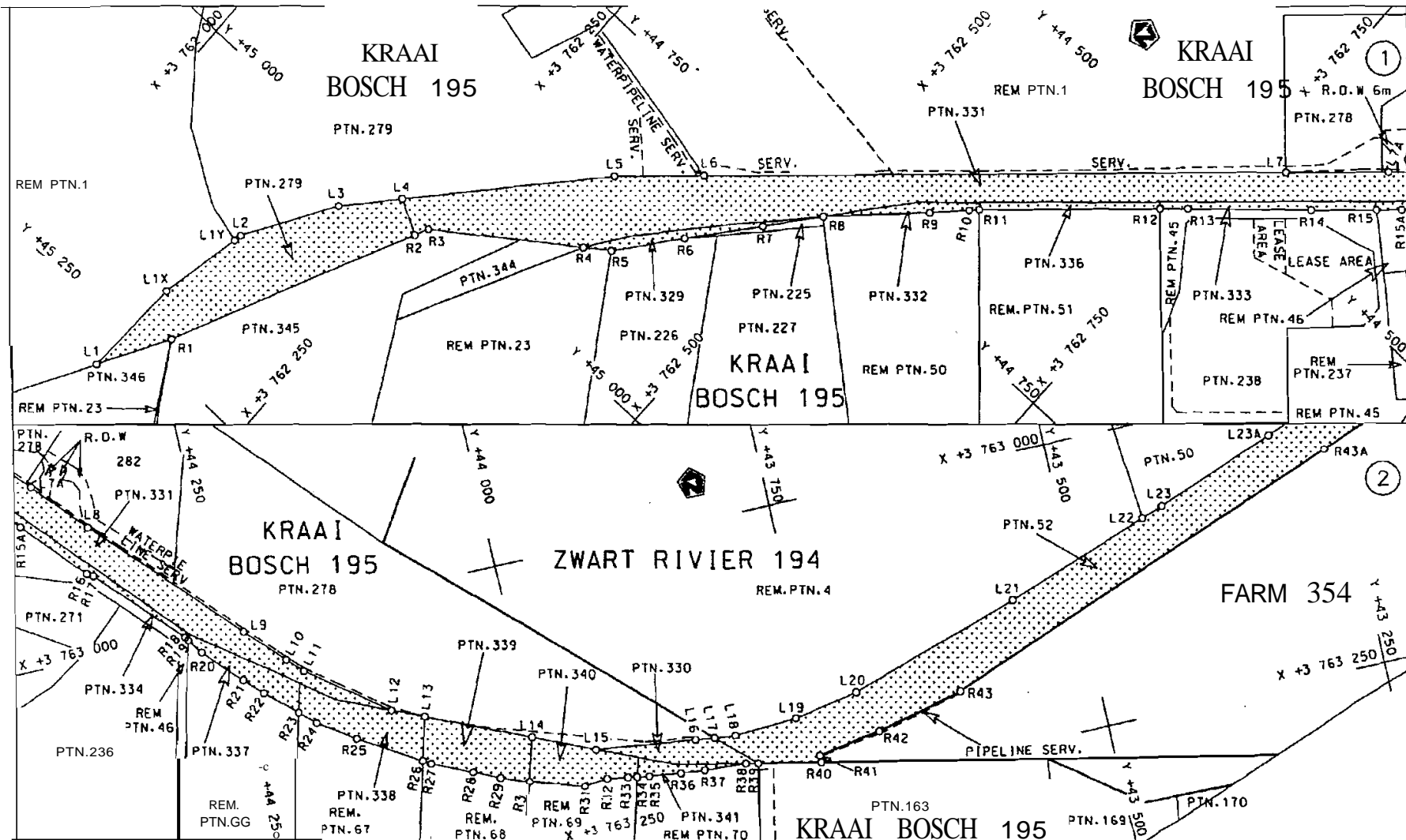
WYSIGING VAN VERKLARING NO'S. 2027 VAN 1990 EN 1539 VAN 1990.

Kragtens Artikel40(1)(b) van die Suid Afrikaanse Nasionale Padagentskap Beperk en die Nasionale Paaie Wet, 1998 (Wet No.7 van 1998), wysig ek hiermee die volgende verklarings deur (I) Verklaring No. 2027 van 1990 in geheel en (II) die gedeelte van Verklaring NO.1539 van 1990 vanaf punte L163 en R144 op vel 1 tot by die oostelike oewer *van* die Swartvlei op vel 3 van plan No. P362/89. te vervang met meegaande velie 1 tot 19 *van* Plan no. P595/06.

(Nasionale Pad N2 Seksie 7X: George Wisselaar - Swartvlei)



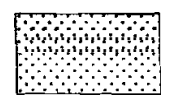
MINISTER VAN VERVOER



STATS-OERFANT, 17 AUGUSTUS 2007

Die Suid-Afrikaanse Nasionale Podogentskop Bepoel
 The South African National Roads Agency Limited

Die figuur getoon
 The figure shown

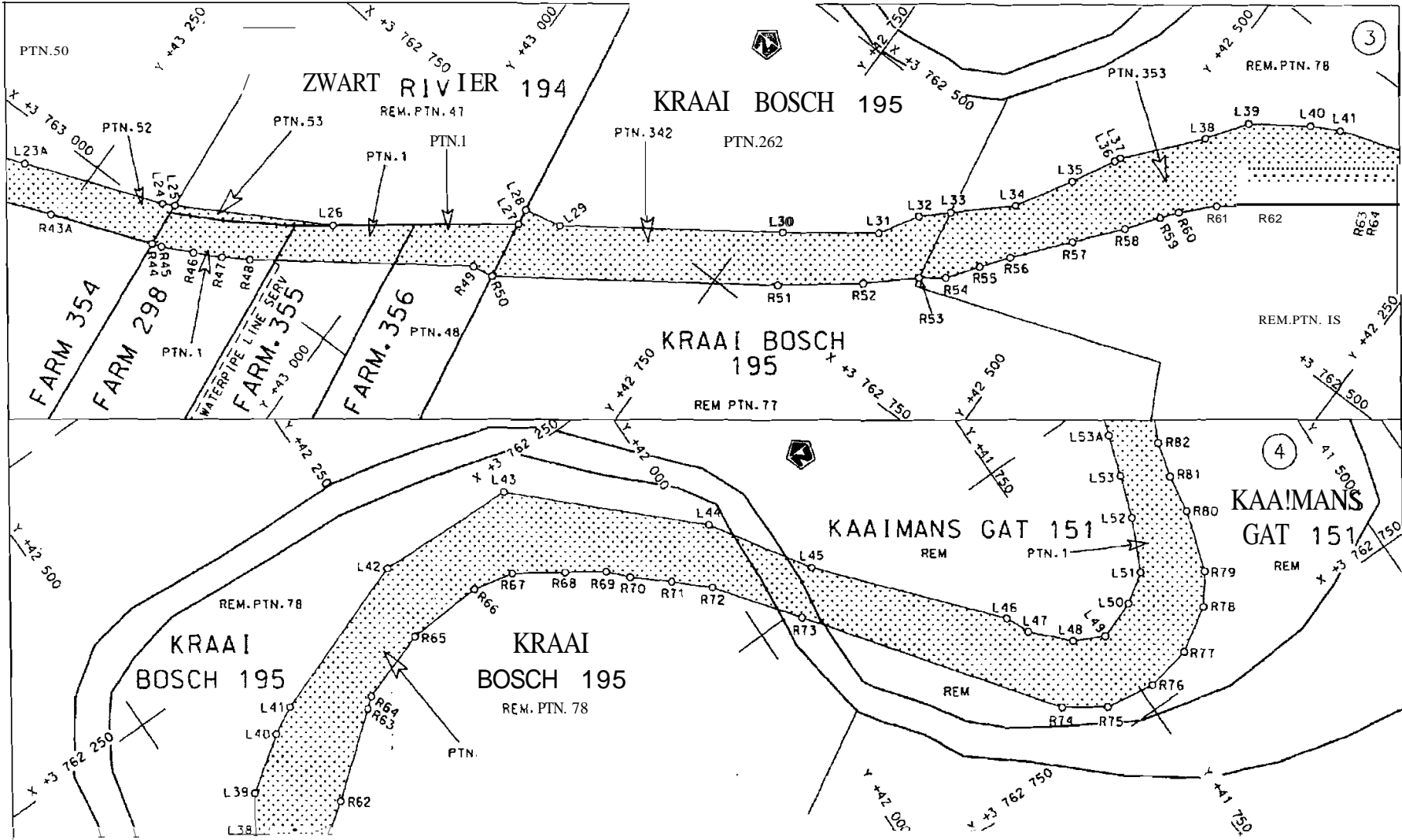


stiel die podereserve voor van 'n gedeelte
 represents the road reserve of a portion
 van Nasionale Roete N2 Seksie 7X
 of National Route

Vel Sheet 1 von 19
 Pion PS9S/06

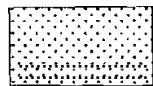
D.O.9.A

No 30180 III



Die Suid Afrikaanse Nasionale Podogentskop Beperk
 The South African National Roads Agency Limited

Die figuur getoon
 The figure shown

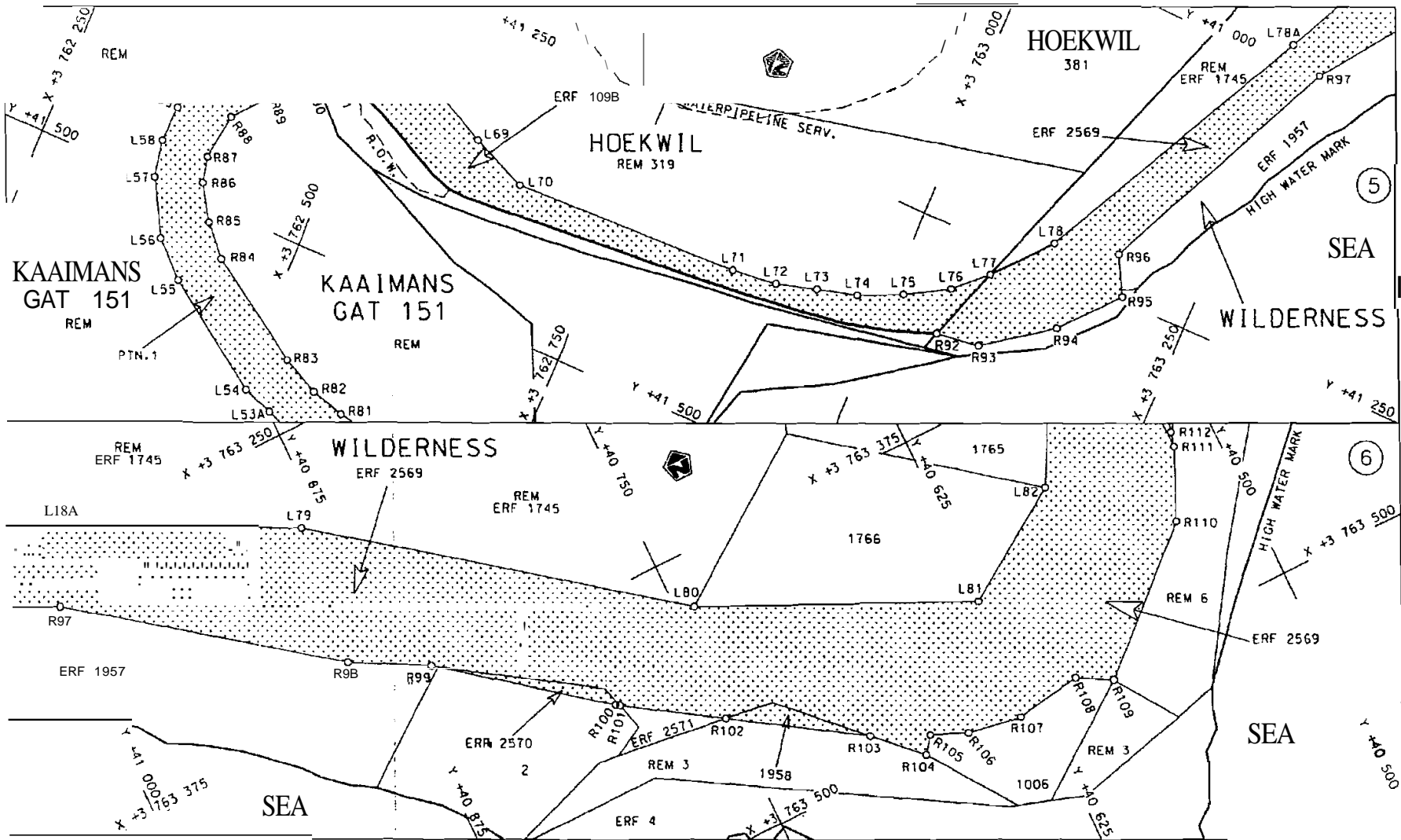


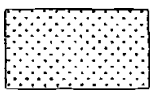
stet die podreserwe veer von 'n gedeelHe
 represents the road reserve of a portion
 von Nasionale Roete N2
 of National Route

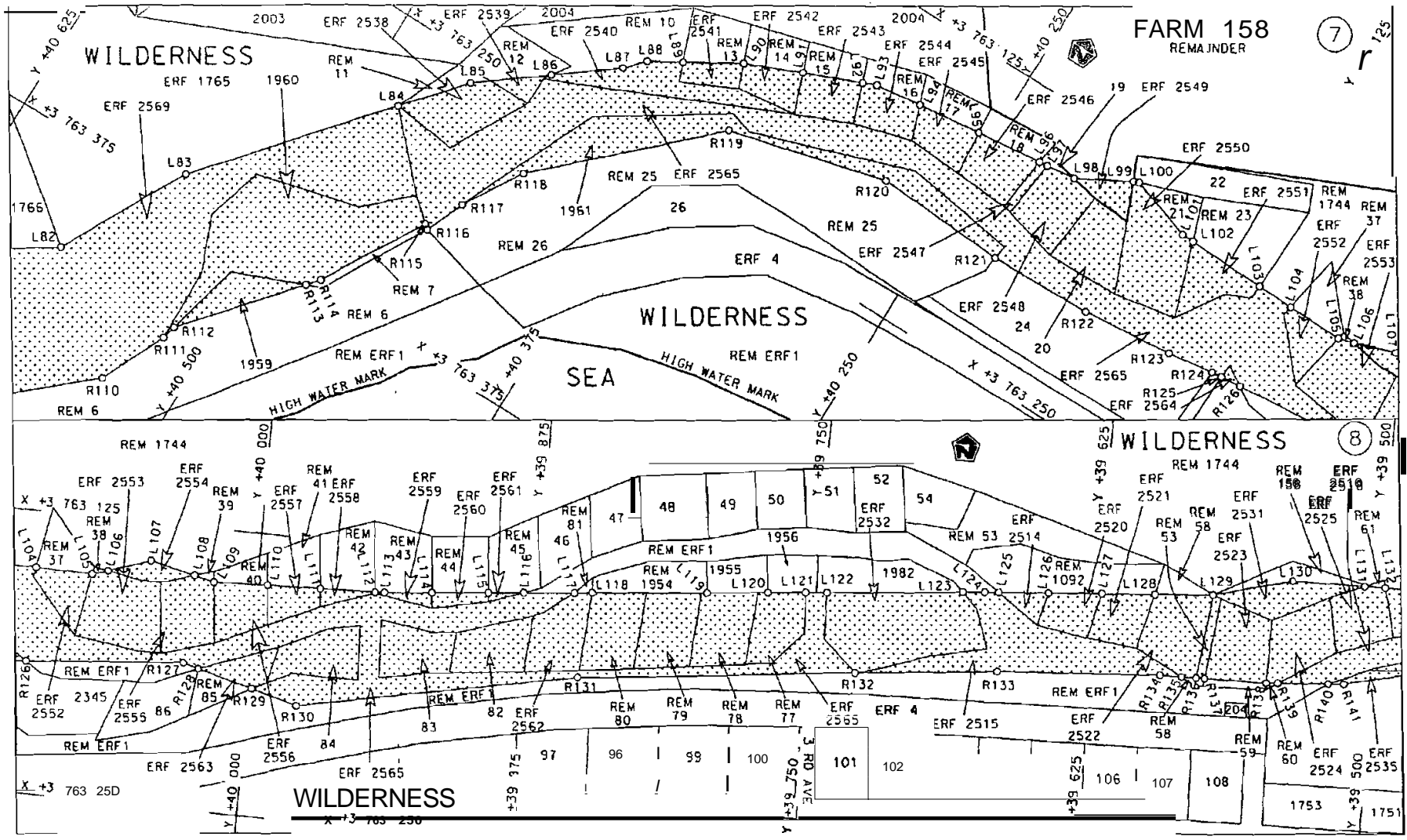
7X

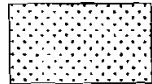
Vel Sheet 2 von 19
 of of

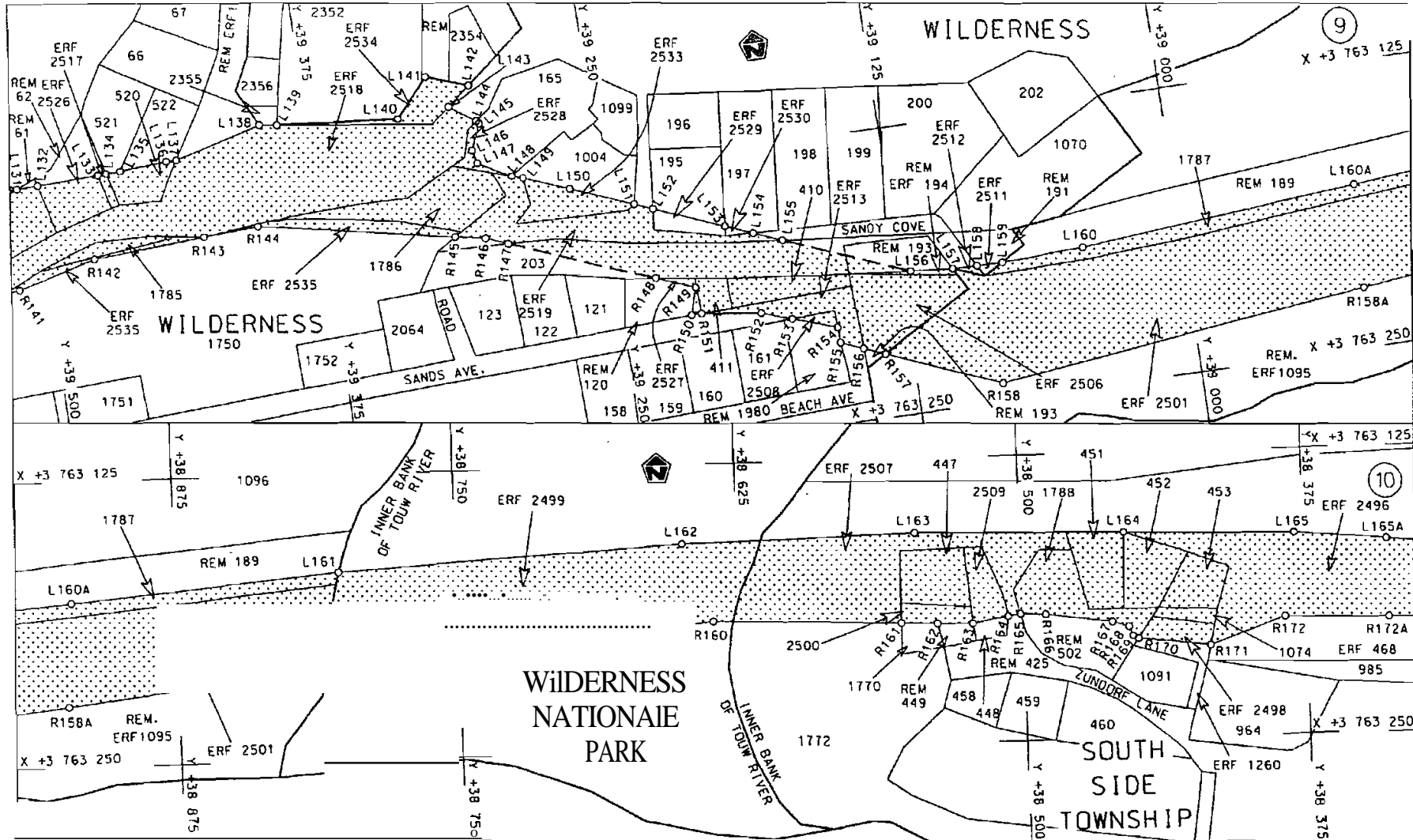
Pln P595/06



<p>Die Suid Afrikaanse Nasionale Podogenskop Beperk The South African National Roads Agency Limited</p>	<p>Die figuur getoon The figure shown</p> 	<p>stet die podreserve veer von 'n gedeelte represents the road reserve of a portion van Nostooce Roete of National Route</p> <p>N2 7X</p>	<p>Vel Sheet 3 von 01 19</p> <p>Plan P595/06</p>
---	--	---	--

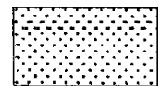


<p>Die Suid Afrikaanse Nasionale Podagenskop Bepoerk The South African National Roads Agency Limited</p>	<p>Die figuur getoon The figure shown</p> 	<p>stel die poadreserwe voor van 'o gadeette represents the road reserve of o portion van Nasionale Roe te N2 Seksie 7X of No tlcnct Route</p>	<p>Vel Sheet 4 von of 19 Plan PS9S/06</p>
--	--	--	---



Die Suid Afrikaanse Nasionale Podagentskop Beperk
The South African National Roads Agency Limited

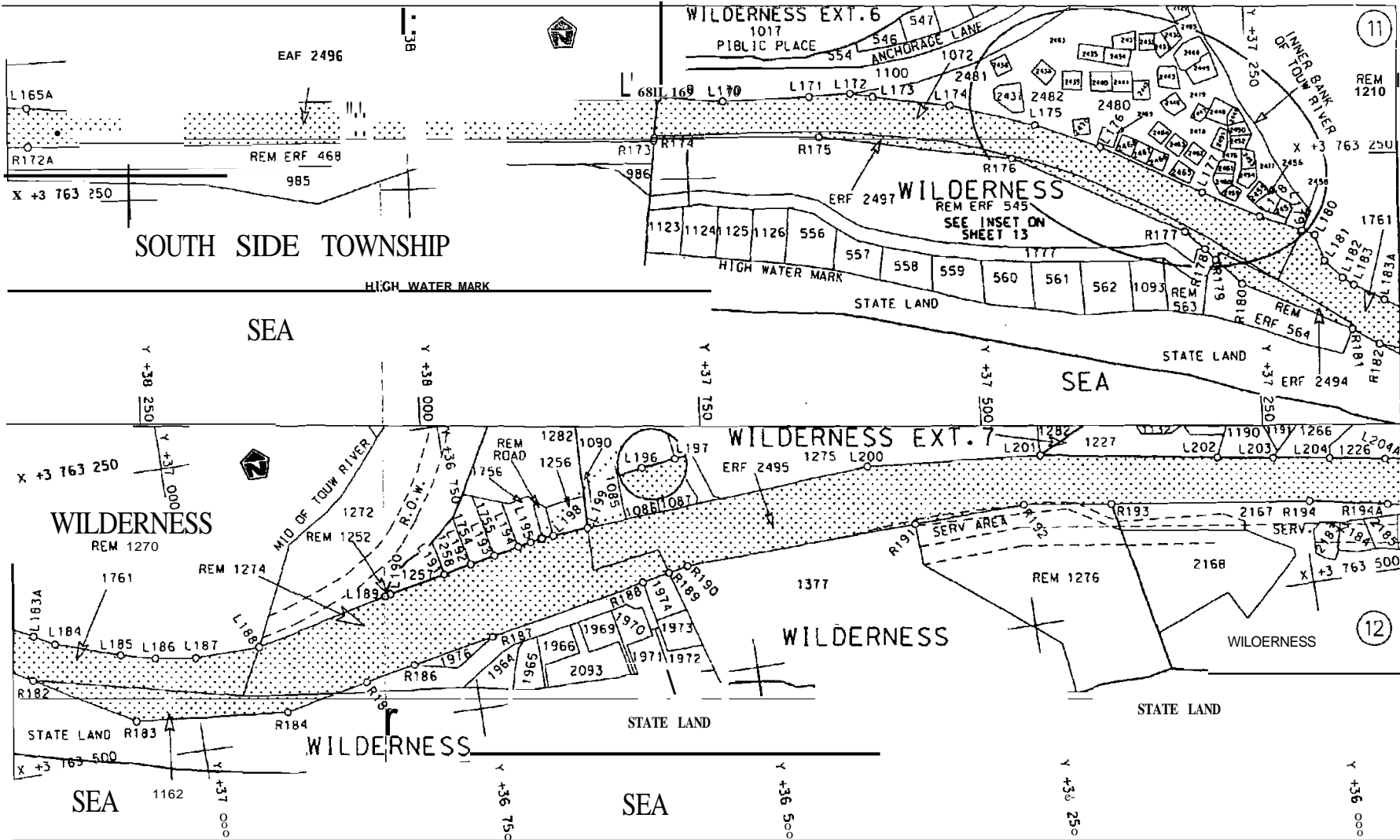
Die figuur getoon
The figure shown

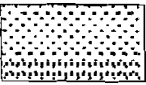


stet die podreserwe voor von 'n gedeelle
represents the road reserve of a portion
von Nasionale Roete N2 Seksie 7X
of National Route

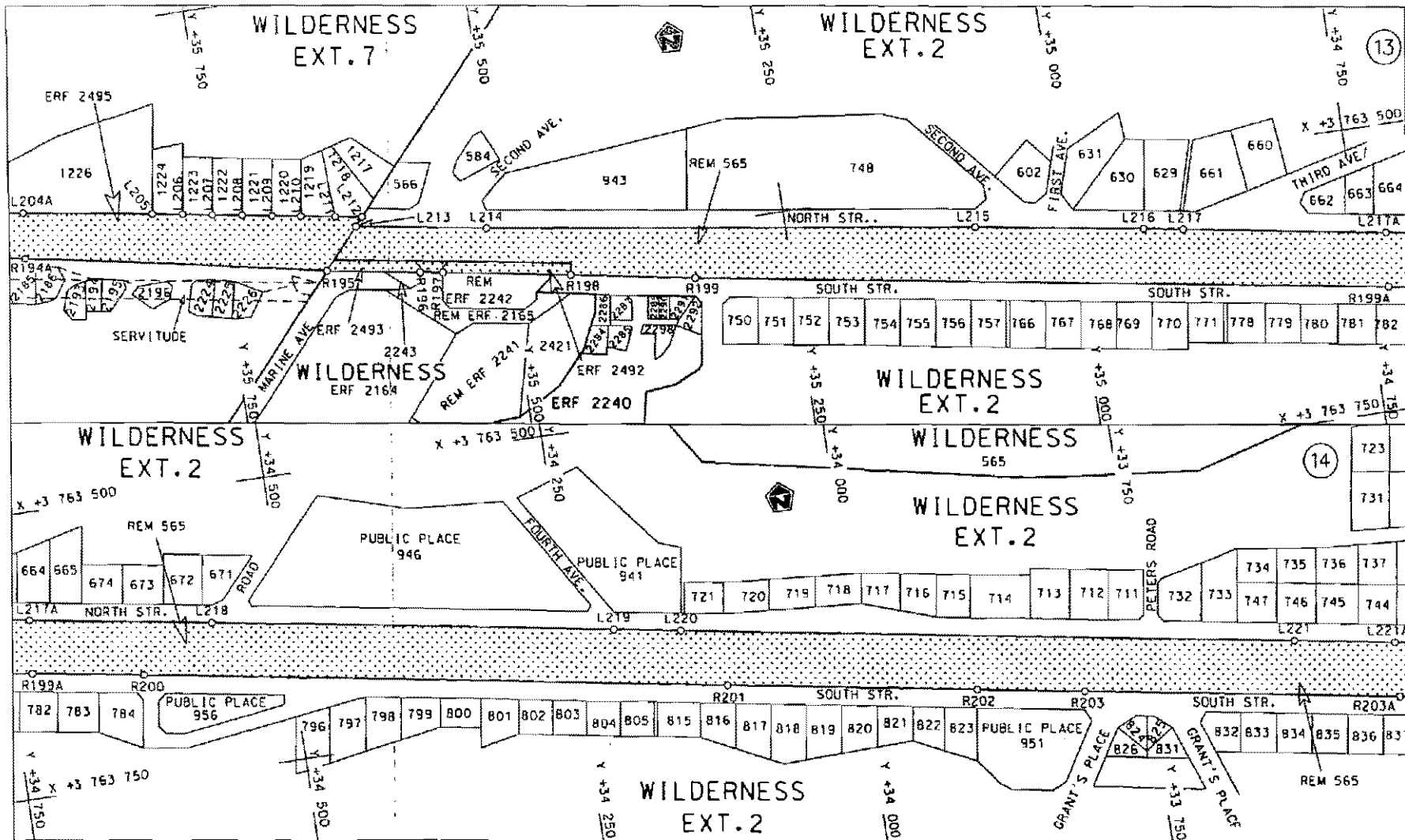
Vel Sheet	5	von of	19
Plon	P595/06		

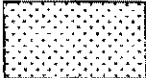
D.G.9.A



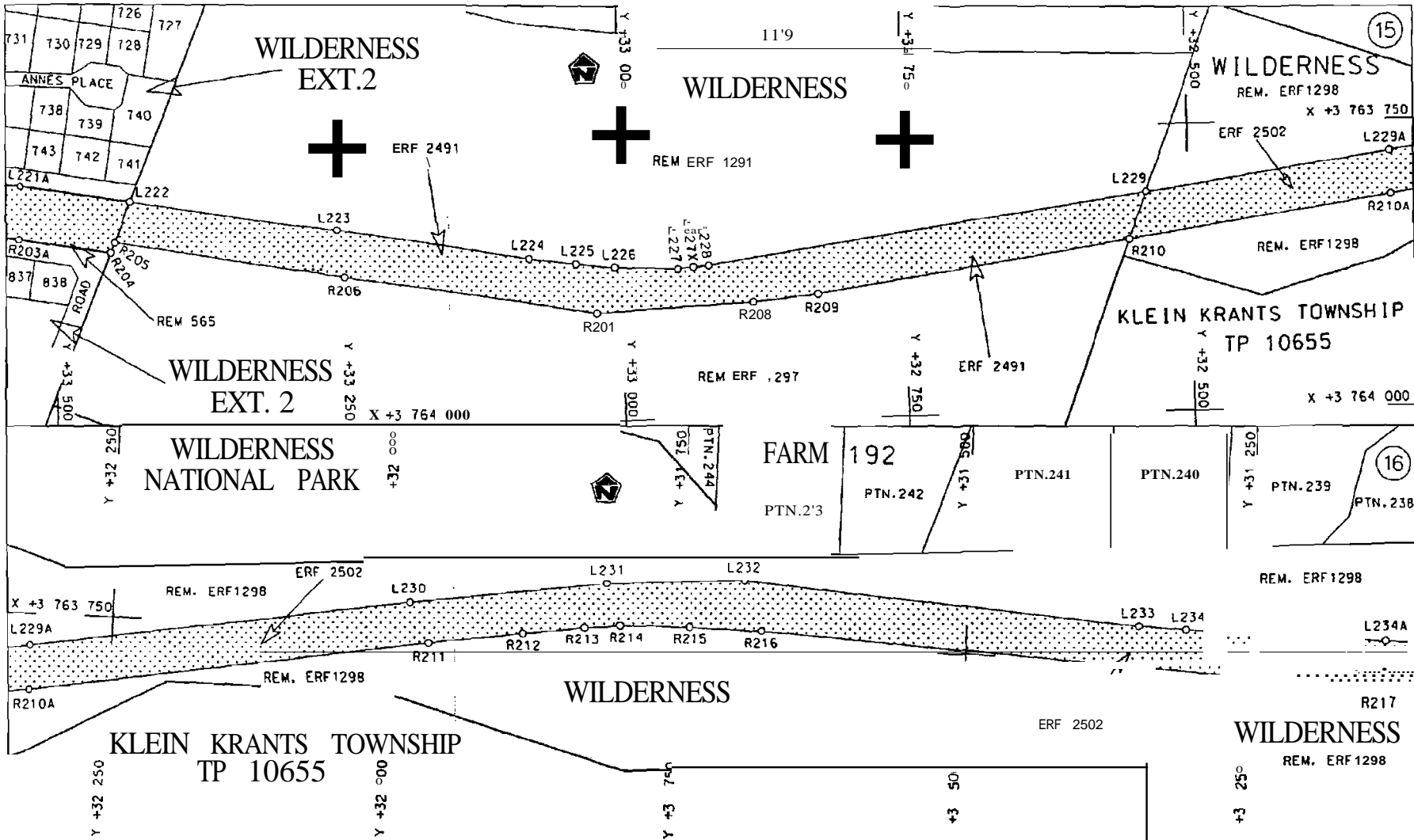
Die Suid Afrikaanse Nasionale Podogenskop Beperk	Die figuur getoos		stet die podreserwe voor von 'o gedeelte	Vel	von
The South African National Roads Agency Limited	The figure shown		represents the road reserve of a portion	van Nasionale Roete	Sheet
			of uouooot Route	Plon	P595/06

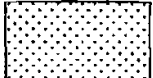
D.D.9.A

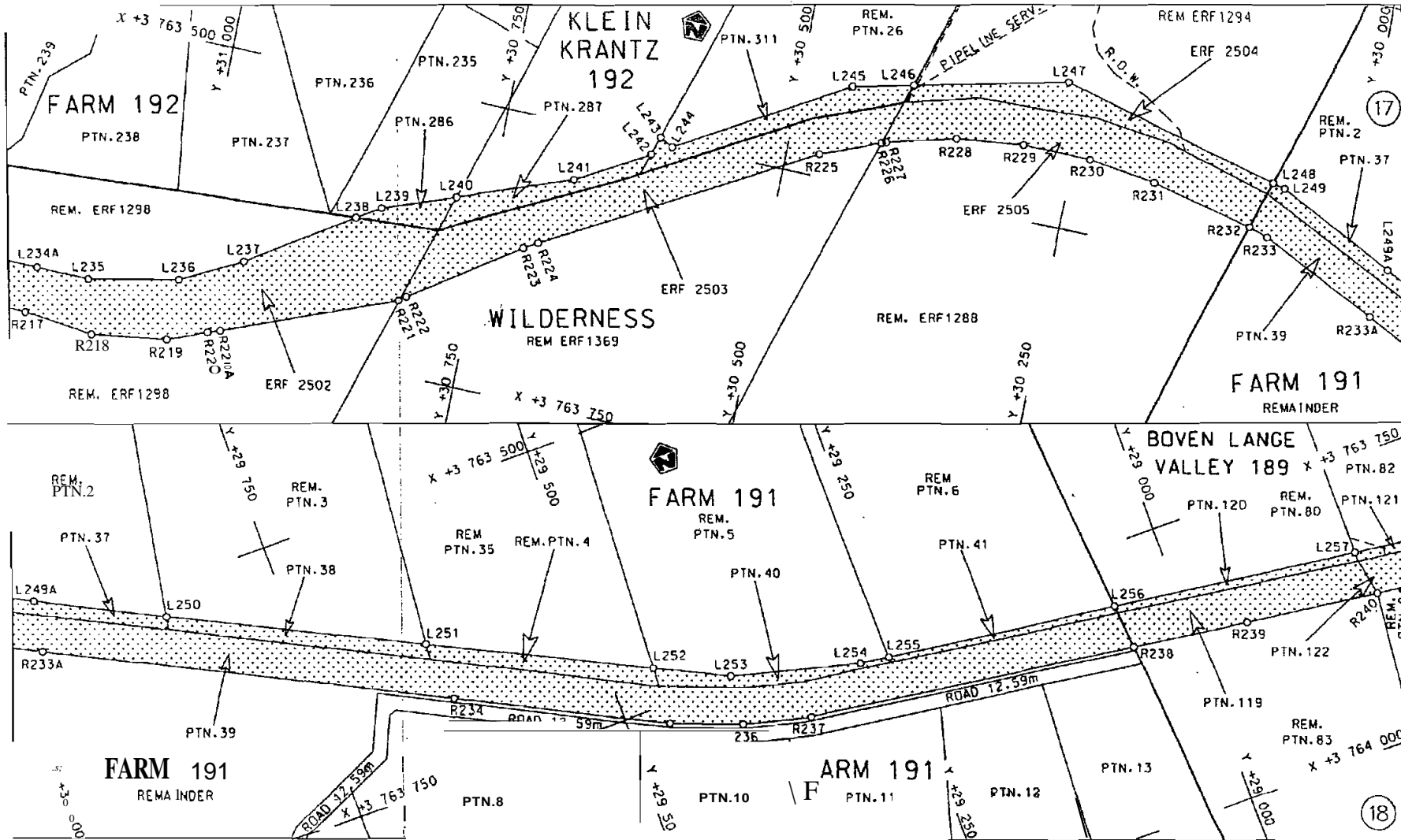


<p>Die Suid Afrikaanse Nasionale Padagentskap Beperk The South African National Roads Agency Limited</p>	<p>Die figuur getoon The figure shown</p> <div style="text-align: center;">  </div>	<p>stel die padreserwe voor van 'n gedeelte represents the road reserve of a portion van Nasionale Route N2 of National Route</p> <p style="text-align: right;">Seksie 7X</p>	<p>Vel Sheet 7 van of 19 Plan P595/06</p>
--	---	---	---

D.O.9.A

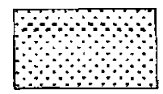


<p>Die Suid Alrikkcnae Ncalnole Pcdqcntskcp Beperk The South Afrlcon Nctionol Roods Agency Limited</p>	<p>Dië liguur getoon The figure shown</p> 	<p>stetcie pcoresere e veer von 'n gedeelte represents the road reserve of a portion von Nosionole Roete N2 of Notional Route N2</p> <p>Seksie Section 7X</p>	<p>Vet Sheet 8 von of 19 Pion PS9S/06</p>
--	--	---	---



Die Suid Afrikaanse Nasionale Podqentstky Beper'k
 The South African National Roads Agency Limited

Die figuur getoon
 The figure shown

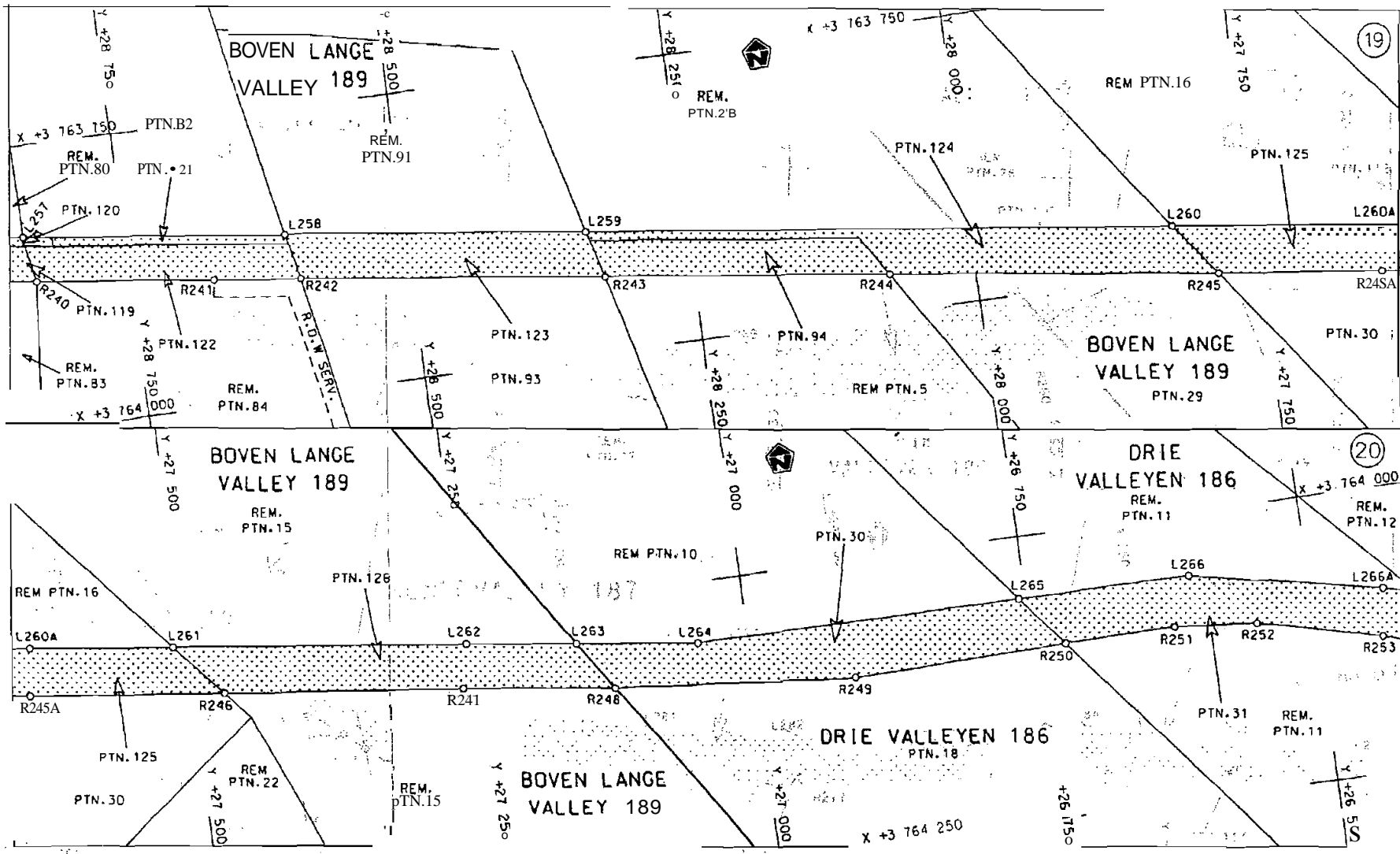


stel die pccreserwe voor van 'n gedeelte
 represents the rood reserve of 0 portion
 von Nosionole Roete N2 Sek sie
 of Notional Route Section

7X

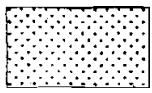
Vel Sheet 9 von of 19
 Pion P595/06

D.O.9.A



Die Suid Afrikaanse Nasionale Podqentakcp Beperk
The South African Notional Roads Agency limited

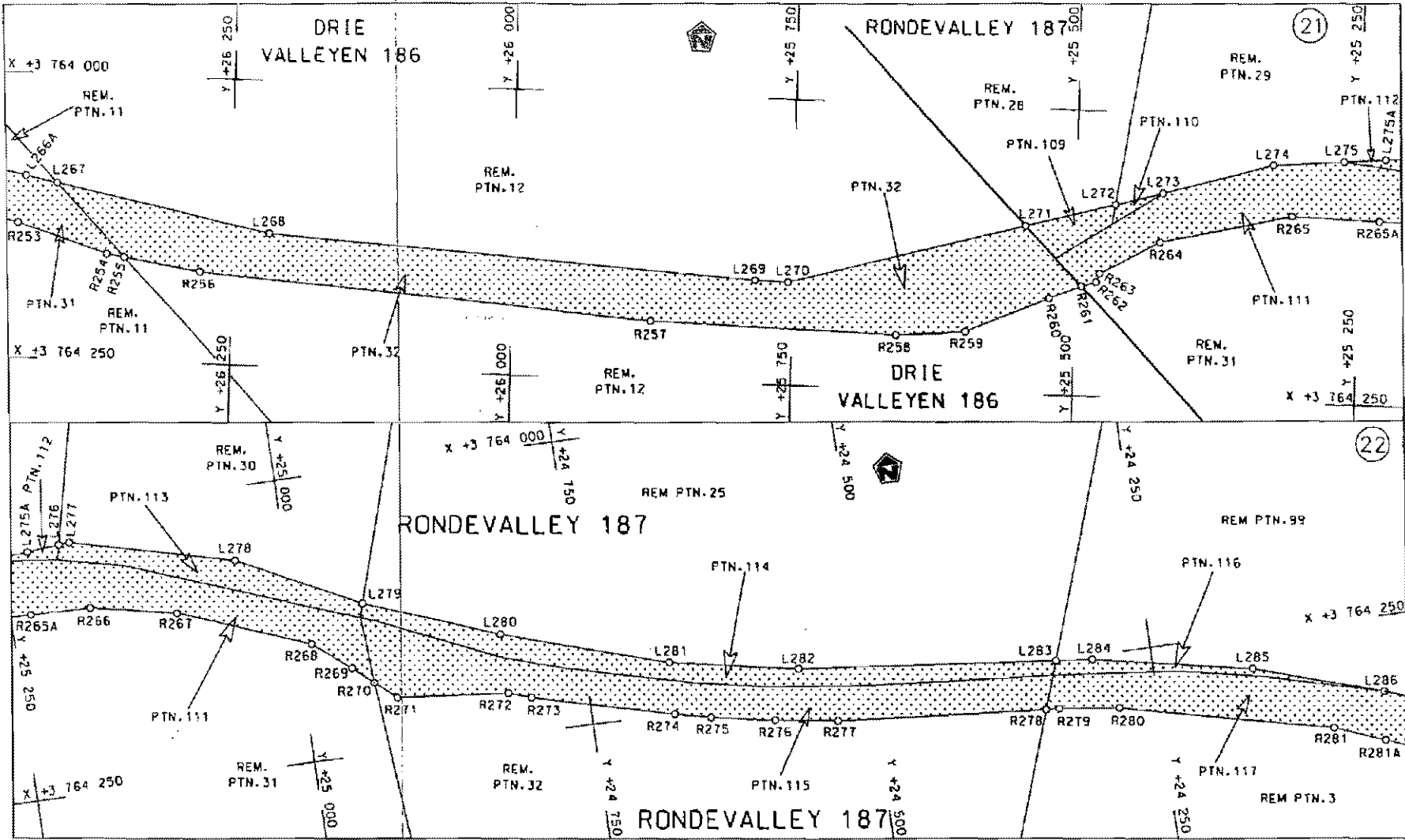
Die figuur qeloon
The figure shown



stel die podreserve voor von 'n gedeette
represents the rood reserve of a portion
von Ncslnccte Roete
of National Route: N2

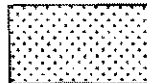
Seksie
Section 7X

Vel
Sheet 10 von
of 19
Pion
PS9S/06



Die Suid Afrikaanse Nasionale Padogenskoper Beprek
The South African National Roads Agency Limited

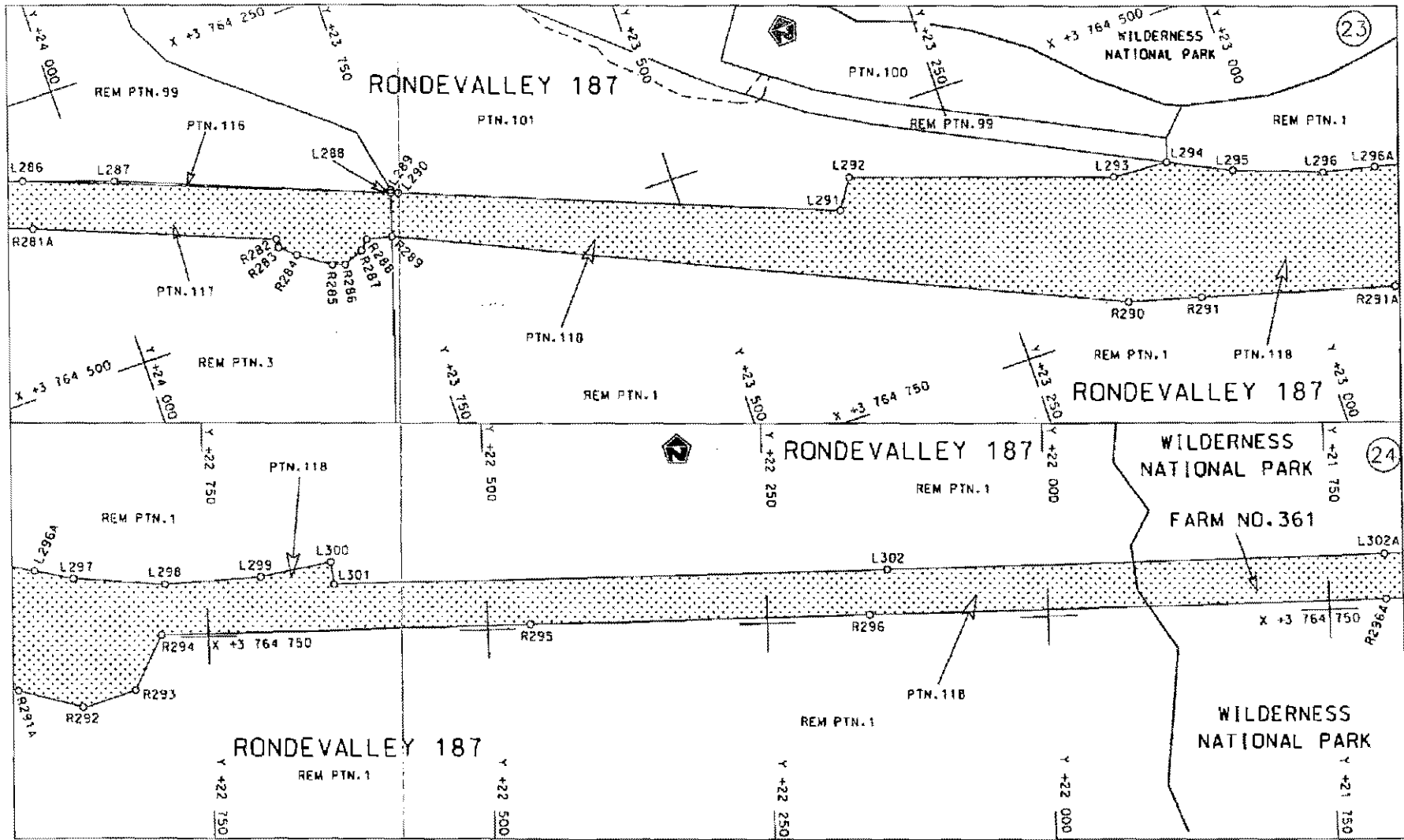
Die figuur getoon
The figure shown



staldie padreserwe voor van 'n gedeelte
represents the road reserve of a portion
van Nasionale Roete N2 Saksie Section
of National Route

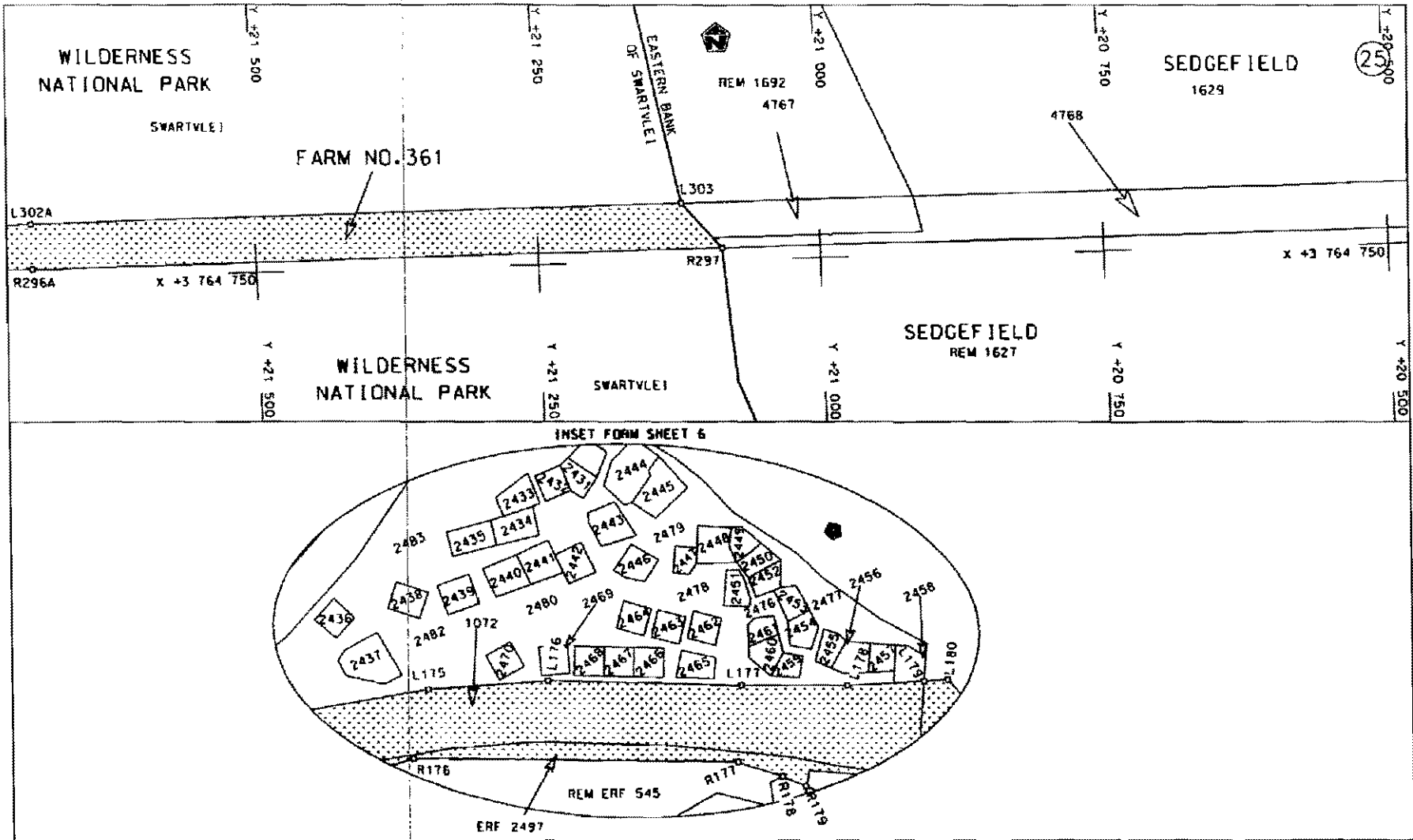
Vel Sheet	11	van of	19
Plan	P595/06		

D.O.9.A



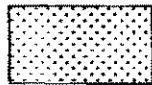
<p>Die Suid Afrikaanse Nasionale Padogenskap Beperk The South African National Roads Agency Limited</p>	<p>Die figuur getoon The figure shown</p> <div style="border: 1px solid black; width: 50px; height: 30px; background-color: #e0e0e0; margin: 5px auto;"></div>	<p>steldie padreserwe voor van 'n gedeelte represents the road reserve of a portion van Nasionale Roete N2 of National Route N2</p> <p>Seksie 7X Section</p>	<p>Vel Sheet 12 van of 19 Plan P595/06</p>
---	--	--	--

D.O.9.A



Die Suid Afrikaanse Nasionale Padagentskap Beperk
The South African National Roads Agency Limited

Die figuur getoon
The figure shown



stelt die padreserwe voor van 'n gedeelte
represents the road reserve of a portion
van Nasionale Roete N2
of National Route N2
Seksie 7X
Section

Vel
Sheet 13 van 19
Plan P595/06

D.O.9.A

PADRESERWE KOORDINATE				/	ROAD RESERVE CO-ORDINATES						
LINKERKANT/LEFT HAND SIDE					REGTERKANT/RIGHT HAND SIDE						
	y	X	WG	23 ^o	Y	X					
L1	45	180.90	3	762	123.18	R1	45	227.91	3	762	150.57
L2	45	118.29	3	762	135.44	R2	45	013.29	3	762	249.01
L3	45	039.68	3	762	182.41	R3	45	001.32	3	762	254.48
L4	44	996.98	3	762	219.68	R4	44	919.76	3	762	365.83
L5	44	854.09	3	762	344.41	R5	44	904.85	3	762	386.19
L6	44	799.79	3	762	402.44	R6	44	852.89	3	762	426.56
L7	44	448.00	3	762	778.20	R7	44	797.81	3	762	470.19
L8	44	344.64	3	762	889.04	R8	44	755.16	3	762	503.98
L9	44	230.31	3	763	007.02	R9	44	688.01	3	762	571.40
L10	44	198.77	3	763	038.83	R10	44	662.56	3	762	595.50
L11	44	185.14	3	763	052.01	R11	44	656.68	3	762	601.78
L12	44	117.31	3	763	100.92	R12	44	547.73	3	762	718.19
L13	44	090.21	3	763	112.36	R13	44	530.61	3	762	736.48
L14	44	001.74	3	763	149.71	R14	44	457.65	3	762	817.06
L15	43	947.82	3	763	172.48	R15	44	418.45	3	762	859.48
L16	43	859.96	3	763	183.02	R16	44	354.88	3	762	928.28
L17	43	843.36	3	763	184.80	R17	44	349.59	3	762	931.41
L18	43	824.79	3	763	186.94	R18	44	282.88	3	763	000.37
L19	43	768.69	3	763	183.96	R19	44	280.60	3	763	003.32
L20	43	711.28	3	763	174.21	R20	44	271.39	3	763	016.54
L21	43	557.67	3	763	126.87	R21	44	240.39	3	763	047.84
L22	43	429.90	3	763	081.90	R22	44	225.05	3	763	062.57
L23	43	410.93	3	763	075.11	R23	44	198.11	3	763	085.21
L24	43	185.00	3	762	990.63	R24	44	183.89	3	763	097.15
L25	43	175.08	3	762	985.60	R25	44	152.85	3	763	118.04
L26	43	051.41	3	762	915.53	R26	44	100.41	3	763	149.77
L27	42	919.15	3	762	815.54	R27	44	093.69	3	763	153.83
L28	42	921.34	3	762	801.71	R28	44	059.18	3	763	168.96
L29	42	888.89	3	762	794.56	R29	44	037.05	3	763	178.86
L30	42	725.82	3	762	680.42	R30	44	012.50	3	763	187.45
L31	42	657.02	3	762	629.98	R31	43	964.97	3	763	201.72
L32	42	637.21	3	762	596.96	R32	43	944.11	3	763	199.52
L33	42	616.53	3	762	577.11	R33	43	925.62	3	763	202.33
L34	42	573.64	3	762	537.76	R34	43	917.89	3	763	203.65
L35	42	546.24	3	762	490.03	R35	43	907.22	3	763	205.47
L36	42	526.88	3	762	453.28	R36	43	879.42	3	763	209.01
L37	42	524.72	3	762	448.08	R37	43	857.70	3	763	210.87
L38	42	474.62	3	762	389.17	R38	43	821.33	3	763	212.77
L39	42	451.70	3	762	355.24	R39	43	810.59	3	763	214.99
L40	42	406.26	3	762	324.06	R40	43	755.57	3	763	226.23
L41	42	382.81	3	762	311.86	R41	43	755.61	3	763	219.98
L42	42	240.44	3	762	263.89	R42	43	699.11	3	763	210.79
L43	42	116.94	3	762	267.14	R43	43	620.81	3	763	193.18
L44	41	982.63	3	762	393.90	R44	43	171.65	3	763	024.82
L45	41	929.13	3	762	476.65	R45	43	163.56	3	763	021.73
L46	41	812.36	3	762	611.68	R46	43	137.66	3	763	008.83
L47	41	803.16	3	762	632.12	R47	43	115.01	3	762	997.03
L48	41	775.22	3	762	661.12	R48	43	094.06	3	762	983.83
L49	41	749.35	3	762	674.02	R49	42	929.66	3	762	869.39
LSD	41	716.19	3	762	662.38	R50	42	911.14	3	762	866.23
L51	41	691.15	3	762	645.83	R51	42	702.53	3	762	720.34
					Vel	14	Van	19	P595/06		
					Sheet		of				

PADRESERWE KOORDINATE				ROAD RESERVE CO-ORDINATES							
LINKERKANT/LEFT HAND SIDE				REGTERKANT/RIGHT HAND SIDE							
	y	X	WG	23°	Y	X					
L52	41	669.68	3	762	602.26	R52	42	642.39	3	762	673.64
L53	41	656.92	3	762	566.34	R53	42	605.50	3	762	640.02
L54	41	635.85	3	762	505.09	R54	42	586.52	3	762	625.73
L55	41	572.01	3	762	411.91	R55	42	567.64	3	762	600.05
L56	41	544.36	3	762	383.67	R56	42	550.78	3	762	577.36
L57	41	497.20	3	762	357.80	R57	42	514.11	3	762	533.27
L58	41	464.75	3	762	351.54	R58	42	483.85	3	762	496.69
L59	41	432.53	3	762	352.97	R59	42	464.57	3	762	470.37
L60	41	405.53	3	762	360.06	R60	42	454.47	3	762	456.53
L61	41	380.68	3	762	372.39	R61	42	430.58	3	762	432.01
L62	41	358.06	3	762	387.35	R62	42	392.29	3	762	404.34
L63	41	333.37	3	762	413.03	R63	42	325.33	3	762	353.31
L64	41	318.86	3	762	452.12	R64	42	316.38	3	762	346.48
L65	41	313.34	3	762	467.00	R65	42	255.14	3	762	326.50
L66	41	309.62	3	762	491.65	R66	42	187.83	3	762	322.37
L67	41	315.12	3	762	531.40	R67	42	152.12	3	762	330.00
L68	41	323.04	3	762	553.98	R68	42	112.68	3	762	355.54
L69	41	351.79	3	762	609.96	R69	42	082.03	3	762	375.72
L70	41	373.46	3	762	659.45	R70	42	067.32	3	762	391.94
L71	41	364.41	3	762	862.95	R71	42	038.79	3	762	416.34
L72	41	360.00	3	762	902.69	R72	42	012.15	3	762	440.87
L73	41	349.31	3	762	938.30	R73	41	961.82	3	762	507.81
L74	41	339.82	3	762	973.31	R74	41	815.71	3	762	702.16
L75	41	322.79	3	763	010.35	R75	41	782.65	3	762	724.43
L76	41	301.06	3	763	047.53	R76	41	739.01	3	762	731.65
L77	41	275.51	3	763	074.82	R77	41	699.83	3	762	724.41
L78	41	227.62	3	763	116.65	R78	41	663.14	3	762	701.98
L79	40	884.32	3	763	291.05	R79	41	643.93	3	762	677.26
L80	40	742.12	3	763	397.85	R80	41	626.41	3	762	624.93
L81	40	627.12	3	763	451.40	R81	41	621.18	3	762	591.87
L82	40	578.12	3	763	420.05	R82	41	612.71	3	762	562.27
L83	40	547.12	3	763	363.65	R83	41	596.76	3	762	529.37
L84	40	482.13	3	763	286.95	R84	41	539.26	3	762	440.23
L85	40	460.22	3	763	260.67	R85	41	514.67	3	762	417.88
L86	40	431.76	3	763	238.41	R86	41	484.66	3	762	399.25
L87	40	406.37	3	763	218.55	R87	41	462.04	3	762	394.38
L88	40	398.72	3	763	210.15	R88	41	421.55	3	762	400.28
L89	40	384.83	3	763	201.82	R89	41	388.15	3	762	427.67
L90	40	361.36	3	763	187.74	R90	41	362.70	3	762	460.61
L91	40	336.60	3	763	177.34	R91	41	350.21	3	762	476.77
L92	40	311.84	3	763	166.93	R92	41	342.11	3	763	050.99
L93	40	305.93	3	763	164.45	R93	41	336.66	3	763	089.39
L94	40	285.08	3	763	162.09	R94	41	294.66	3	763	147.14
L95	40	256.09	3	763	158.81	R95	41	246.39	3	763	189.46
L96	40	225.98	3	763	155.41	R96	41	213.62	3	763	172.15
L97	40	222.15	3	763	154.98	R97	40	997.22	3	763	274.05
L98	40	209.27	3	763	153.52	R98	40	892.02	3	763	352.15
L99	40	186.22	3	763	140.63	R99	40	859.37	3	763	369.65
L100	40	183.91	3	763	139.65	RI00	40	793.37	3	763	420.91
L101	40	156.02	3	763	148.47	R101	40	791.69	3	763	421.99
LI02	40	150.59	3	763	148.58	RI02	40	751.50	3	763	447.83
				Vel	15	Van	19	<i>P595j06</i>			
				Sheet		of					

PADRESERWE KOORDINATE				/	ROAD RESERVE CO-ORDINATES			
LINKERKANT/LEFT HAND SIDE					REGTERKANT/RIGHT HAND SIDE			
	Y	X	WG	23°	y	X		
LI03	40 115.60	3 763	149.30	RI03	40 696.98	3 763	482.91	
LI04	40 099.13	3 763	149.63	RI04	40 678.38	3 763	501.24	
LI05	40 073.93	3 763	150.15	RI05	40 672.82	3 763	494.21	
LI06	40 066.91	3 763	148.09	RI06	40 656.93	3 763	501.04	
LI07	40 048.22	3 763	141.67	RI07	40 632.89	3 763	504.98	
LI08	40 028.18	3 763	146.17	RI08	40 603.39	3 763	500.12	
LI09	40 019.32	3 763	148.16	RI09	40 588.71	3 763	508.31	
L110	39 995.48	3 763	147.23	R110	40 532.71	3 763	459.04	
L111	39 971.63	3 763	146.29	R111	40 518.81	3 763	429.13	
L112	39 946.48	3 763	145.31	R112	40 517.18	3 763	422.82	
L113	39 942.43	3 763	145.15	R113	40 476.92	3 763	375.70	
L114	39 921.39	3 763	142.96	R114	40 472.16	3 763	370.15	
L115	39 896.24	3 763	140.34	R115	40 444.54	3 763	324.86	
L116	39 880.72	3 763	138.72	R116	40 442.63	3 763	326.47	
L117	39 858.31	3 763	136.39	R117	40 434.89	3 763	309.02	
L118	39 850.49	3 763	135.57	R118	40 418.96	3 763	282.90	
L119	39 798.96	3 763	130.20	R119	40 350.91	3 763	217.40	
L120	39 771.86	3 763	127.38	R120	40 279.91	3 763	199.05	
L121	39 754.87	3 763	125.62	R121	40 221.30	3 763	201.28	
L122	39 745.33	3 763	124.63	R122	40 175.06	3 763	199.49	
L123	39 685.36	3 763	118.41	R123	40 134.35	3 763	195.56	
L124	39 675.63	3 763	117.40	R124	40 113.62	3 763	192.53	
L125	39 669.26	3 763	116.84	R125	40 108.98	3 763	192.13	
L126	39 647.09	3 763	114.87	R126	40 099.98	3 763	191.36	
L127	39 623.45	3 763	112.77	R127	40 029.83	3 763	185.32	
L128	39 600.03	3 763	110.69	R128	40 022.97	3 763	187.16	
L129	39 574.22	3 763	108.40	R129	39 998.39	3 763	193.75	
L130	39 539.64	3 763	098.90	R130	39 977.88	3 763	199.25	
L131	39 507.35	3 763	098.04	R131	39 853.63	3 763	173.90	
L132	39 497.97	3 763	097.79	R132	39 729.85	3 763	158.89	
L133	39 470.79	3 763	097.06	R133	39 666.88	3 763	151.90	
L134	39 466.97	3 763	096.96	R134	39 594.64	3 763	146.15	
L135	39 460.64	3 763	096.81	R135	39 585.09	3 763	145.91	
L136	39 439.92	3 763	095.60	R136	39 578.50	3 763	145.74	
L137	39 435.53	3 763	095.56	R137	39 574.69	3 763	145.64	
L138	39 396.87	3 763	085.47	R138	39 547.44	3 763	144.95	
L139	39 389.00	3 763	086.55	R139	39 542.29	3 763	144.50	
L140	39 335.14	3 763	091.67	R140	39 519.81	3 763	142.51	
L141	39 320.25	3 763	075.11	R141	39 512.89	3 763	141.90	
L142	39 301.98	3 763	081.44	R142	39 477.94	3 763	133.25	
L143	39 312.11	3 763	089.53	R143	39 428.55	3 763	130.45	
L144	39 301.03	3 763	097.48	R144	39 404.14	3 763	129.25	
L145	39 299.89	3 763	098.65	R145	39 317.92	3 763	146.07	
L146	39 304.64	3 763	109.65	R146	39 304.64	3 763	148.65	
L147	39 303.14	3 763	115.65	R147	39 295.04	3 763	152.35	
L148	39 289.13	3 763	123.44	R148	39 232.58	3 763	176.20	
L149	39 284.22	3 763	125.04	R149	39 215.68	3 763	182.66	
L150	39 264.64	3 763	132.25	R150	39 219.26	3 763	194.36	
L151	39 237.22	3 763	142.86	R151	39 214.76	3 763	194.31	
L152	39 229.19	3 763	146.14	R152	39 188.62	3 763	197.63	
L153	39 198.77	3 763	158.05	R153	39 175.37	3 763	202.17	

Vel	16	Van	19	P595/06
Sheet		of		

PADRESERWE KOORDINATE				/ ROAD RESERVE CO-ORDINATES			
LINKERKANT/LEFT HAND SIDE				REGTERKANT/RIGHT HAND SIDE			
	Y	X	WG 23°		y	X	
L154	39 186.79	3 763 162.74		R154	39 155.99	3 763 208.76	
L155	39 174.29	3 763 167.64		R155	39 155.72	3 763 215.53	
L156	39 120.52	3 763 188.69		R156	39 146.07	3 763 219.35	
L157	39 102.11	3 763 190.24		R157	39 137.00	3 763 222.95	
L158	39 091.23	3 763 190.39		R158	39 087.43	3 763 242.64	
L159	39 079.87	3 763 190.54		R159	38 818.63	3 763 211.65	
L160	39 043.56	3 763 189.15		R160	38 636.92	3 763 194.20	
L161	38 802.17	3 763 168.39		R161	38 553.76	3 763 197.29	
L162	38 649.40	3 763 160.08		R162	38 538.02	3 763 197.82	
L163	38 546.38	3 763 158.01		R163	38 522.32	3 763 198.36	
L164	38 454.09	3 763 160.36		R164	38 506.45	3 763 195.75	
L165	38 379.05	3 763 162.42		R165	38 500.90	3 763 194.84	
L166	38 278.16	3 763 171.20		R166	38 489.57	3 763 195.34	
L167	38 157.83	3 763 168.53		R167	38 460.36	3 763 199.33	
L168	37 774.35	3 763 179.02		R168	38 453.12	3 763 201.58	
L169	37 774.26	3 763 177.41		R169	38 451.38	3 763 205.57	
L170	37 715.99	3 763 183.05		R170	38 449.02	3 763 206.74	
L171	37 638.23	3 763 181.99		R171	38 417.51	3 763 210.72	
L172	37 602.01	3 763 180.29		R172	38 384.41	3 763 198.94	
L173	37 582.06	3 763 184.05		R173	37 779.17	3 763 215.34	
L174	37 514.37	3 763 193.93		R174	37 778.84	3 763 212.89	
L175	37 439.29	3 763 214.12		R175	37 630.87	3 763 217.35	
L176	37 381.54	3 763 235.58		R176	37 460.90	3 763 242.37	
L177	37 292.64	3 763 278.77		R177	37 310.47	3 763 312.86	
L178	37 243.01	3 763 301.74		R178	37 293.06	3 763 328.79	
L179	37 206.54	3 763 316.18		R179	37 284.13	3 763 338.52	
L180	37 195.05	3 763 320.60		R180	37 261.63	3 763 360.49	
L181	37 187.99	3 763 343.35		R181	37 166.00	3 763 404.23	
L182	37 172.59	3 763 359.11		R182	37 141.98	3 763 417.77	
L183	37 162.67	3 763 365.52		R183	37 056.63	3 763 466.14	
L184	37 118.30	3 763 389.16		R184	36 921.93	3 763 477.64	
L185	37 061.74	3 763 407.18		R185	36 847.02	3 763 462.82	
L186	37 031.29	3 763 414.45		R186	36 803.04	3 763 454.02	
L187	36 995.42	3 763 419.19		R187	36 729.73	3 763 439.46	
L188	36 938.60	3 763 418.07		R188	36 590.16	3 763 411.74	
L189	36 819.29	3 763 390.61		R189	36 565.54	3 763 406.85	
L190	36 814.39	3 763 389.60		R190	36 548.24	3 763 403.38	
LIn	36 764.17	3 763 379.21		R191	36 341.11	3 763 396.84	
L192	36 739.68	3 763 374.14		R192	36 243.41	3 763 394.31	
L193	36 717.16	3 763 369.49		R193	36 166.01	3 763 405.25	
L194	36 694.64	3 763 364.83		R194	35 991.68	3 763 429.39	
L195	36 682.94	3 763 362.41		R195	35 658.87	3 763 492.69	
L196	36 673.23	3 763 360.70		R196	35 577.12	3 763 505.80	
L197	36 672.09	3 763 360.58		R197	35 557.36	3 763 508.98	
L198	36 662.15	3 763 359.49		R198	35 445.32	3 763 526.95	
L199	36 630.88	3 763 357.21		R199	35 336.36	3 763 545.48	
L200	36 374.74	3 763 340.63		R200	34 632.20	3 763 657.47	
L201	36 221.94	3 763 353.83		R201	34 119.96	3 763 739.68	
L202	36 066.18	3 763 378.94		R202	33 900.96	3 763 774.81	
L203	36 017.42	3 763 386.84		R203	33 806.75	3 763 789.89	
L204	35 968.07	3 763 394.83		R204	33 450.11	3 763 847.07	
				Vel 17 Van 19 Sheet of P595/06			

PADRESERWE KOORDINATE				/	ROAD RESERVE CO-ORDINATES			
LINKERKANT/LEFT HAND SIDE				r	REGTERKANT/RIGHT HAND SIDE			
	y	X	WG	23°		y	X	
L205	35 805.73	3 763	421.10	R205	33 446.41	3 763	838.17	
L206	35 779.07	3 763	425.42	R206	33 244.01	3 763	871.90	
L207	35 752.91	3 763	429.65	R207	33 022.66	3 763	906.84	
L208	35 726.75	3 763	433.89	R208	32 884.93	3 763	899.94	
L209	35 700.59	3 763	438.12	R209	32 827.59	3 763	894.16	
L210	35 674.43	3 763	442.35	R210	32 553.34	3 763	851.49	
L211	35 644.55	3 763	447.19	R211	31 971.20	3 763	760.97	
L212	35 620.98	3 763	451.04	R212	31 889.02	3 763	748.50	
L213	35 627.42	3 763	458.20	R213	31 835.17	3 763	740.97	
L214	35 513.18	3 763	476.53	R214	31 804.33	3 763	737.76	
L215	35 083.53	3 763	537.75	R215	31 743.65	3 763	736.96	
L216	34 935.89	3 763	560.87	R216	31 679.71	3 763	737.52	
L217	34 901.68	3 763	566.36	R217	31 135.28	3 763	765.55	
L218	34 565.13	3 763	620.38	R218	31 073.40	3 763	772.61	
L219	34 212.68	3 763	676.92	R219	31 006.97	3 763	762.86	
L220	34 153.63	3 763	686.41	R220	30 972.72	3 763	749.46	
L221	33 616.92	3 763	772.49	R221	30 812.13	3 763	686.27	
L222	33 431.51	3 763	802.28	R222	30 805.75	3 763	681.78	
L223	33 249.82	3 763	831.10	R223	30 712.72	3 763	617.45	
L224	33 082.16	3 763	858.79	R224	30 700.80	3 763	610.31	
L225	33 040.81	3 763	863.66	R225	30 470.77	3 763	480.13	
L226	33 007.00	3 763	867.31	R226	30 418.64	3 763	459.27	
L227	32 951.56	3 763	869.92	R227	30 414.80	3 763	457.74	
L228	32 924.29	3 763	867.25	R228	30 354.87	3 763	441.53	
L229	32 537.24	3 763	809.11	R229	30 295.85	3 763	433.98	
L230	31 988.46	3 763	726.57	R230	30 235.91	3 763	434.56	
L231	31 816.87	3 763	701.71	R231	30 176.38	3 763	442.50	
L232	31 696.47	3 763	694.50	R232	30 086.39	3 763	463.48	
L233	31 349.51	3 763	719.51	R233	30 069.62	3 763	469.15	
L234	31 308.16	3 763	721.16	R234	29 636.45	3 763	681.65	
L235	31 085.78	3 763	724.96	R235	29 463.46	3 763	766.32	
L236	31 006.90	3 763	708.88	R236	29 401.98	3 763	788.83	
L237	30 953.70	3 763	681.02	R237	29 342.42	3 763	803.50	
L238	30 863.07	3 763	622.24	R238	29 051.98	3 763	841.80	
L239	30 842.66	3 763	609.22	R239	28 950.18	3 763	855.22	
L240	30 779.49	3 763	585.72	R240	28 832.70	3 763	870.12	
L241	30 680.69	3 763	548.62	R241	28 675.77	3 763	890.16	
L242	30 618.12	3 763	512.16	R242	28 598.89	3 763	899.88	
L243	30 612.77	3 763	496.05	R243	28 328.87	3 763	933.49	
L244	30 600.88	3 763	502.10	R244	28 076.24	3 763	965.60	
L245	30 453.29	3 763	416.28	R245	27 786.45	3 764	004.12	
L246	30 401.11	3 763	403.89	R246	27 470.42	3 764	042.14	
L247	30 267.68	3 763	372.22	R247	27 258.58	3 764	066.60	
L248	30 073.70	3 763	420.81	R248	27 123.86	3 764	083.40	
L249	30 062.93	3 763	423.50	R249	26 909.56	3 764	103.36	
L250	29 852.48	3 763	528.39	R250	26 720.65	3 764	098.32	
L251	29 643.22	3 763	628.39	R251	26 622.80	3 764	096.87	
L252	29 460.61	3 763	715.61	R252	26 549.84	3 764	103.71	
L253	29 397.74	3 763	745.69	R253	26 441.12	3 764	130.15	
L254	29 284.52	3 763	774.13	R254	26 361.68	3 764	155.71	
L255	29 259.14	3 763	777.30	R255	26 345.84	3 764	158.24	
				Vel	18	Van	19	P595/06
				Sheet		of		

PADRESERWE KOORDINATE				/	ROAD RESERVE CO-ORDINATES			
LINKERKANT/LEFT HAND SIDE					REGTERKANT/RIGHT HAND SIDE			
	Y	X	WG	23°	y	X		
L256	29 055.50	3 763 802.69		R256	26 278.24	3 764 169.02		
L257	28 839.08	3 763 829.68		R257	25 875.83	3 764 198.59		
L258	28 607.10	3 763 858.61		R258	25 656.67	3 764 203.10		
L259	28 339.96	3 763 891.92		R259	25 595.55	3 764 197.92		
L260	27 821.10	3 763 956.63		R260	25 522.14	3 764 166.19		
1261	27 510.45	3 763 995.37		R261	25 493.82	3 764 154.13		
L262	27 250.70	3 764 027.76		R262	25 480.84	3 764 149.92		
1263	27 152.58	3 764 040.17		R263	25 477.94	3 764 142.08		
L264	27 045.35	3 764 053.74		R264	25 424.98	3 764 112.43		
L265	26 756.04	3 764 054.03		R265	25 309.05	3 764 085.17		
L266	26 604.05	3 764 054.18		R266	25 179.08	3 764 088.15		
L267	26 407.12	3 764 094.41		R267	25 102.91	3 764 103.60		
1268	26 216.96	3 764 133.26		R268	24 987.55	3 764 146.97		
1269	25 783.08	3 764 159.02		R269	24 955.38	3 764 172.64		
1270	25 753.81	3 764 159.82		R270	24 937.81	3 764 187.80		
L271	25 544.45	3 764 102.26		R271	24 919.60	3 764 203.51		
1272	25 465.37	3 764 080.52		R272	24 821.11	3 764 213.13		
1273	25 423.30	3 764 068.95		R273	24 801.05	3 764 219.58		
1274	25 326.38	3 764 040.62		R274	24 676.72	3 764 250.99		
L275	25 264.12	3 764 035.40		R275	24 645.49	3 764 258.21		
L276	25 198.93	3 764 029.88		R276	24 588.93	3 764 268.28		
L277	25 189.40	3 764 029.07		R277	24 533.45	3 764 276.48		
L278	25 045.02	3 764 065.01		R278	24 349.39	3 764 291.57		
L279	24 937.80	3 764 117.64		R279	24 337.76	3 764 292.52		
L280	24 820.58	3 764 161.21		R280	24 284.80	3 764 299.00		
L281	24 674.91	3 764 205.49		R281	24 098.87	3 764 342.03		
L282	24 561.81	3 764 226.45		R282	23 852.69	3 764 436.43		
L283	24 334.57	3 764 250.19		R283	23 853.26	3 764 443.77		
L284	24 302.44	3 764 253.54		R284	23 839.73	3 764 455.28		
L285	24 162.73	3 764 280.58		R285	23 812.48	3 764 473.50		
L286	24 050.20	3 764 316.02		R286	23 800.91	3 764 477.09		
L287	23 973.21	3 764 342.42		R287	23 782.77	3 764 470.33		
1288	23 741.93	3 764 431.46		R288	23 775.24	3 764 462.90		
L289	23 741.27	3 764 429.14		R289	23 753.56	3 764 467.86		
L290	23 735.54	3 764 433.84		R290	23 149.59	3 764 731.06		
L291	23 365.88	3 764 573.97		R291	23 086.50	3 764 748.16		
1292	23 348.93	3 764 548.89		R292	22 863.91	3 764 809.87		
1293	23 126.26	3 764 623.31		R293	22 817.09	3 764 796.48		
L294	23 077.15	3 764 625.71		R294	22 792.21	3 764 747.69		
L295	23 023.53	3 764 651.27		R295	22 462.02	3 764 745.96		
L296	22 948.20	3 764 678.59		R296	22 158.63	3 764 744.52		
L297	22 868.58	3 764 696.20		R297	21 086.80	3 764 739.09		
L298	22 787.55	3 764 703.23		R220X	30 962.04	3 763 745.70		
L299	22 701.56	3 764 698.90						
L300	22 638.50	3 764 687.12						
L301	22 636.15	3 764 706.86						
L302	22 141.47	3 764 705.36						
L303	21 121.72	3 764 699.09						
L227X	32 937.55	3 763 868.59						

Vel	19	Van	19	P595/06
Sheet		of		