

CONTENTS**INHOUD**

<i>No.</i>	<i>Page No.</i>	<i>Gazette No.</i>	<i>No.</i>	<i>B/adsy No.</i>	<i>Koerant No.</i>
GOVERNMENT NOTICE			GOEWERMENSKENNISGEWING		
Transport, Department of			Vervoer, Departement van		
<i>Government Notice</i>			<i>Goewermentskennisgewing</i>		
740			740		
South African National Roads Agency Limited and the National Roads Act (7/1996): Declaration amendment of National Road N1 Section 26X: Amendment of Declaration No. 24 of 1968			Suid-Afrikaanse Nasionale Padagentskap Beperk en die Nasionale Paaie Wet (7/1998): Verklaring wysiging van Nasionale Pad N1 Seksie 28X: Wysiging van Verklaring No. 24 van 1968.....		
	3	30182		4	30182

GOVERNMENT NOTICE
GOEWERMENSKENNISGEWING

DEPARTMENT OF TRANSPORT
DEPARTEMENT VAN VERVOER

No. 740

17 August 2007

THE SOUTH AFRICAN NATIONAL ROADS
AGENCY LIMITED

Registration No: 98/09584/06

DECLARATION AMENDMENT OF NATIONAL ROAD N1 SECTION 28X

AMENDMENT OF DECLARATION No. 24 OF 1988

By virtue of section 40 (1)(b) of the South African National Roads Agency Limited and the National Roads Act, 1998 (Act No.7 of 1998), I hereby amend Declaration No. 24 of 1998, by substituting the description, with the subjoined sheets 1to 31 of Plan *P604/06*.

(National Road N1 Section 28X: Polokwane - Louis Trichard!)

J. Radtke

No. 740

17 Augustus 2007

**DIE SUID-AFRIKAANSE NASIONALE
PADAGENTSKAP BEPERK**

Registrasie No: 98/09584/06

VERKLARING WYSIGING VAN NASIONALE PAD N1 SEKSIE 28X.

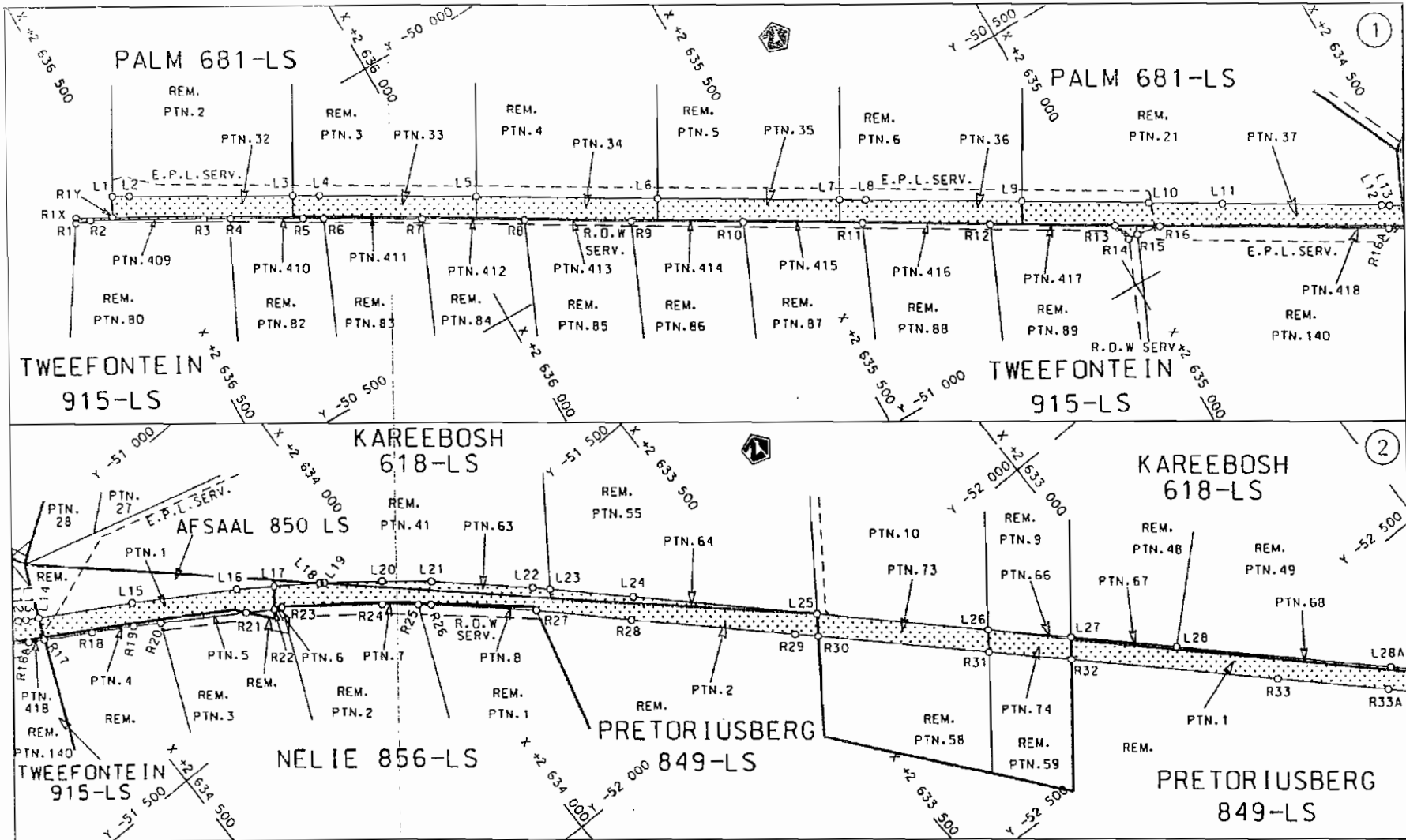
WYSIGING VAN VERKLARING NO. 24 VAN 1988


Kragtens Artikel 40(1)(b) van die Suid Afrikaanse Nasionale Padagentskap Beperk en die Nasionale Paaie Wet, 1998 (Wet NO.7 van 1998), wysig ek hiermee Verklaring No.24 van 1988, deur die beskrywing te vervang met meegaande velie 1 tot 31 van Plan No. P604/06.

(Nasionale Pad N1 Seksie 28X: Polokwane – Louis Trichardt)

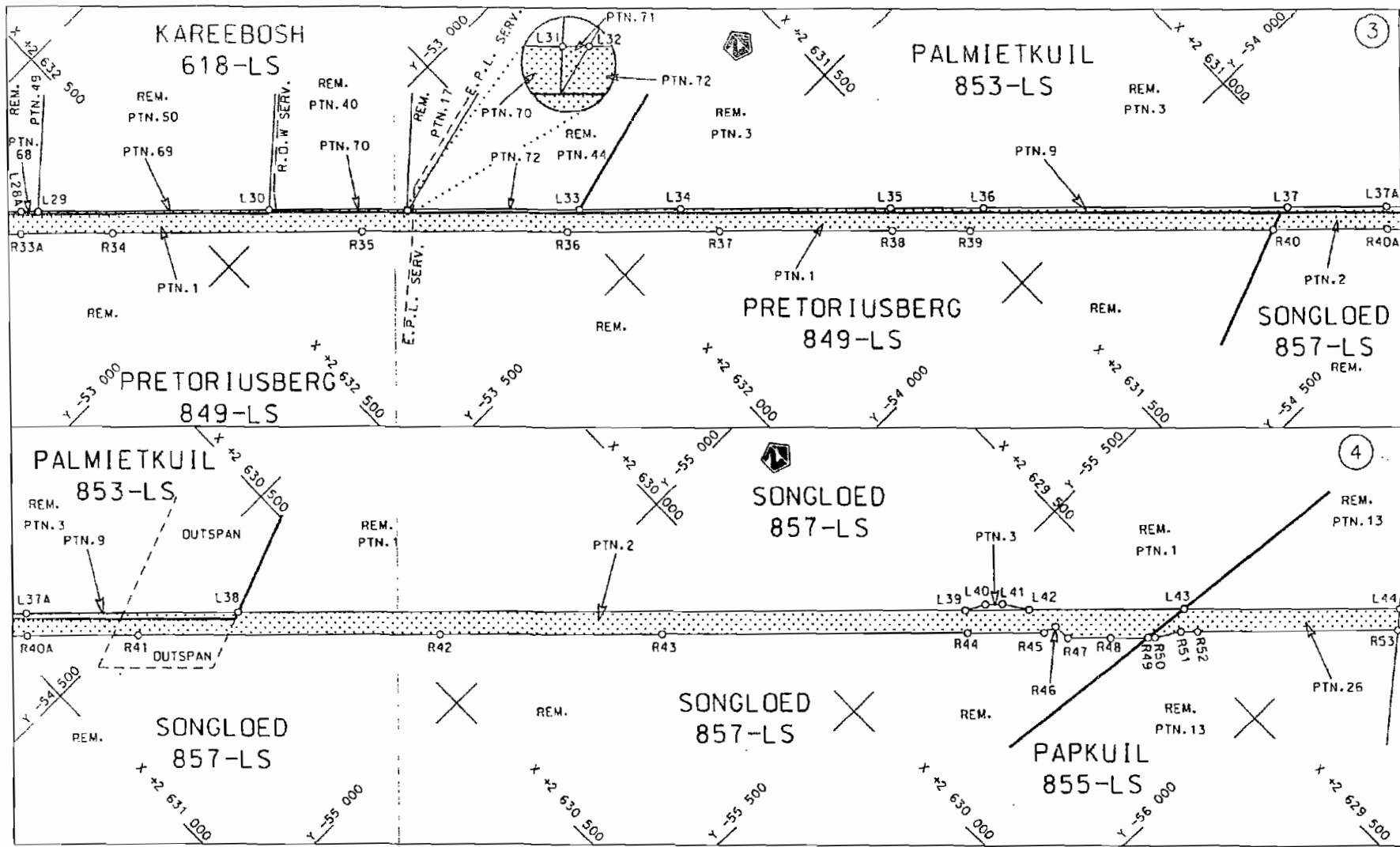


MINISTER VAN VERVOER

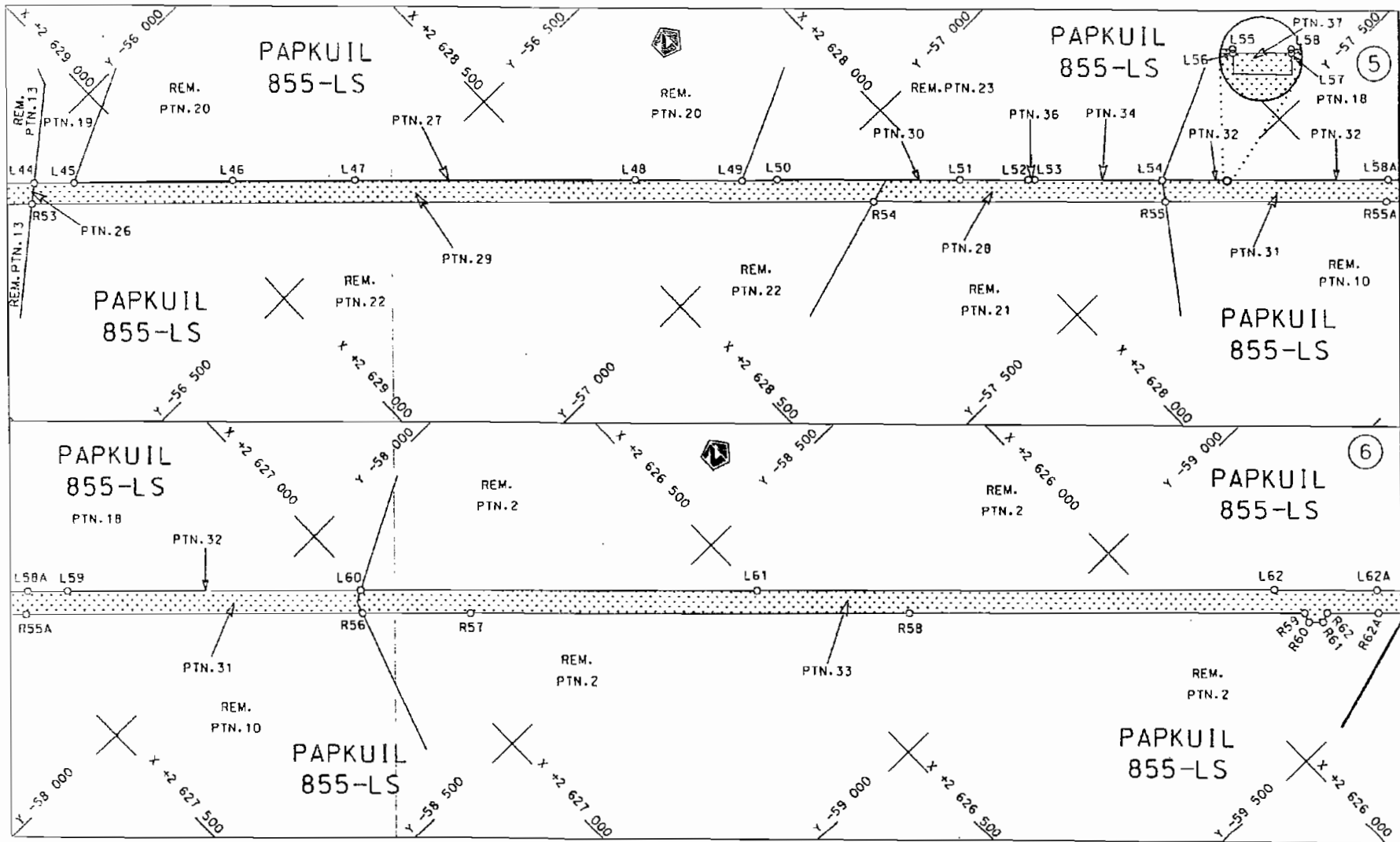


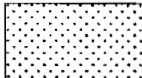
<p>Die Suid Afrikaanse Nasionale Padagentskap Beperk The South African National Roads Agency Limited</p>	<p>Die figuur getoon The figure shown</p> 	<p>steldie padreserwe voor van 'n gedeelte represents the road reserve of a portion van Nasionale Roete of National Route</p> <p>N1</p> <p>Seksie Section</p> <p>28X</p>	<p>Vel Sheet</p> <p>1 van of</p> <p>31</p> <p>Plan P604/06</p>
--	--	--	--

D.O.9.A

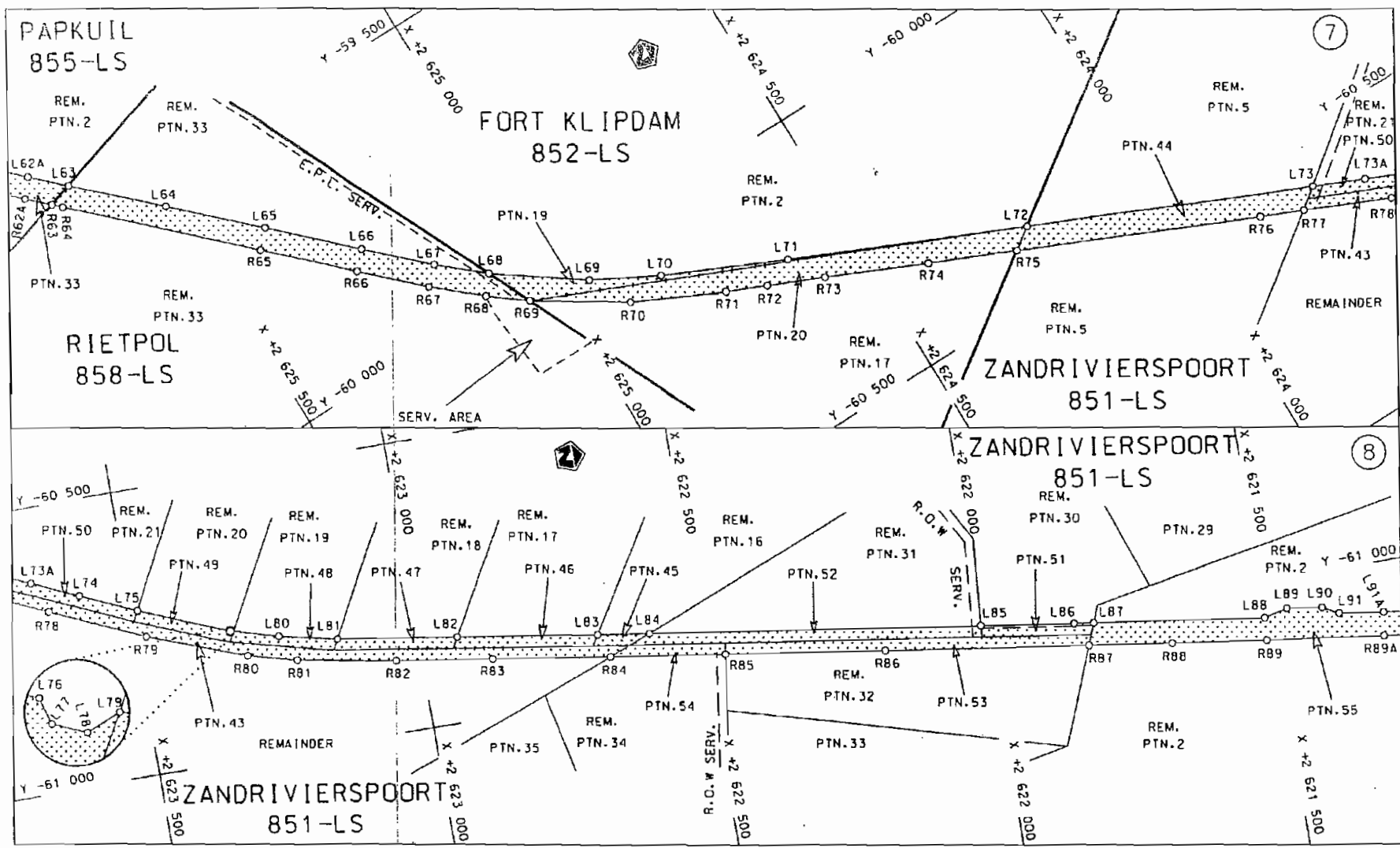


<p>Die Suid Afrikaanse Nasionale Padogentskap Beperk The South African National Roads Agency Limited</p>	<p>Die figuur getoon The figure shown</p>		<p>steldie padreserwe voor van 'n gedeelte represents the road reserve of a portion van Nasionale Roete N1 of National Route N1</p>	<p>Seksie Section 28X</p>	<p>Vel Sheet 2 van of 31 Plan P604/06</p>
--	---	--	---	-----------------------------------	---



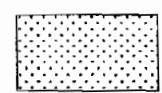
Die Suid Afrikaanse Nasionale Padagentskap Beperk The South African National Roads Agency Limited	Die figuur getoon The figure shown	 steldie padreserwe voor van 'n gedeelte represents the road reserve of a portion van Nasionale Roete N1 Seksie Section of National Route N1 Sektion Section	Vel Sheet 3 van 31 Plan P604/06
--	---------------------------------------	---	------------------------------------

D.O.9.A



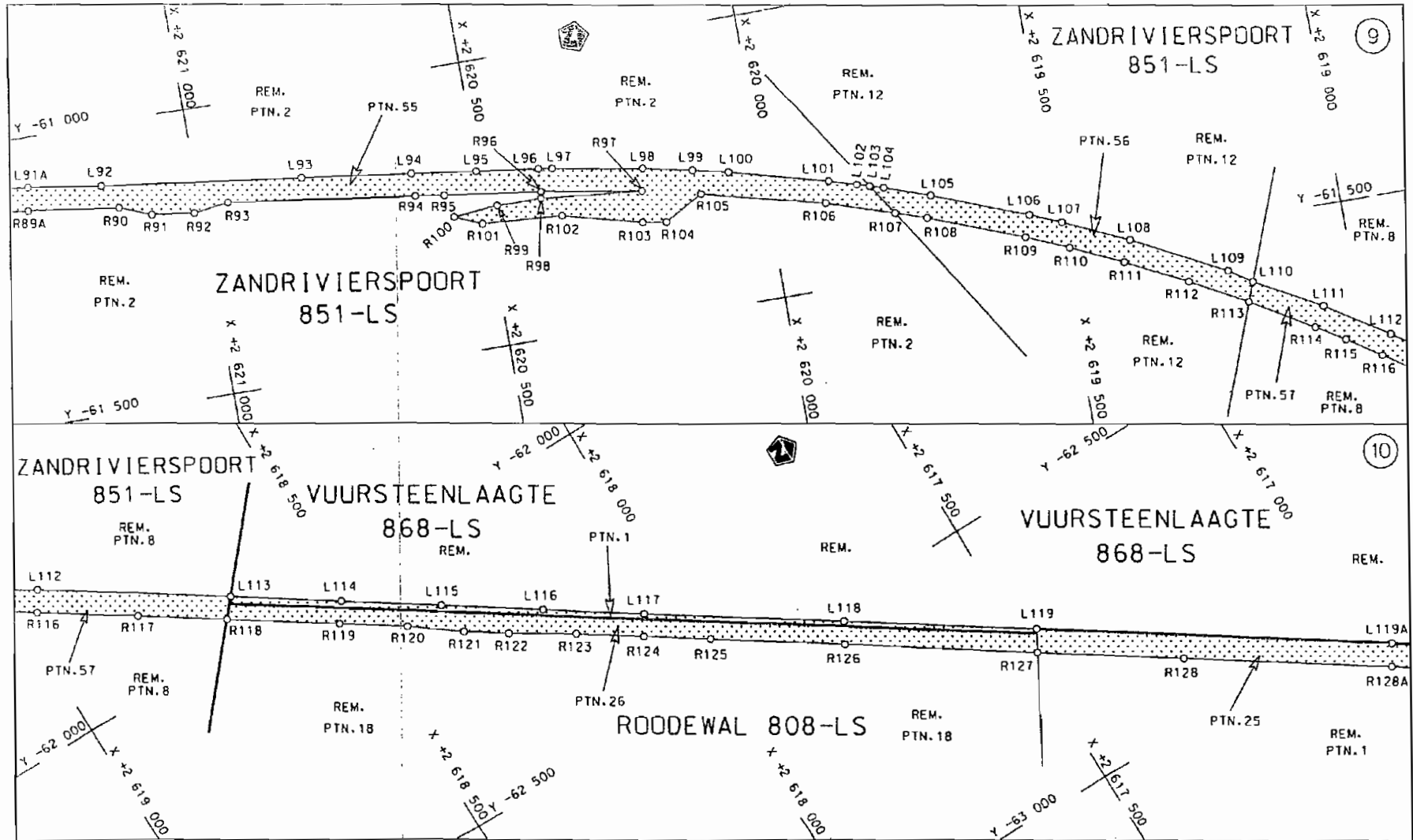
Die Suid Afrikaanse Nasionale Padagentskap Beperk
The South African National Roads Agency Limited


Die figuur getoon
The figure shown



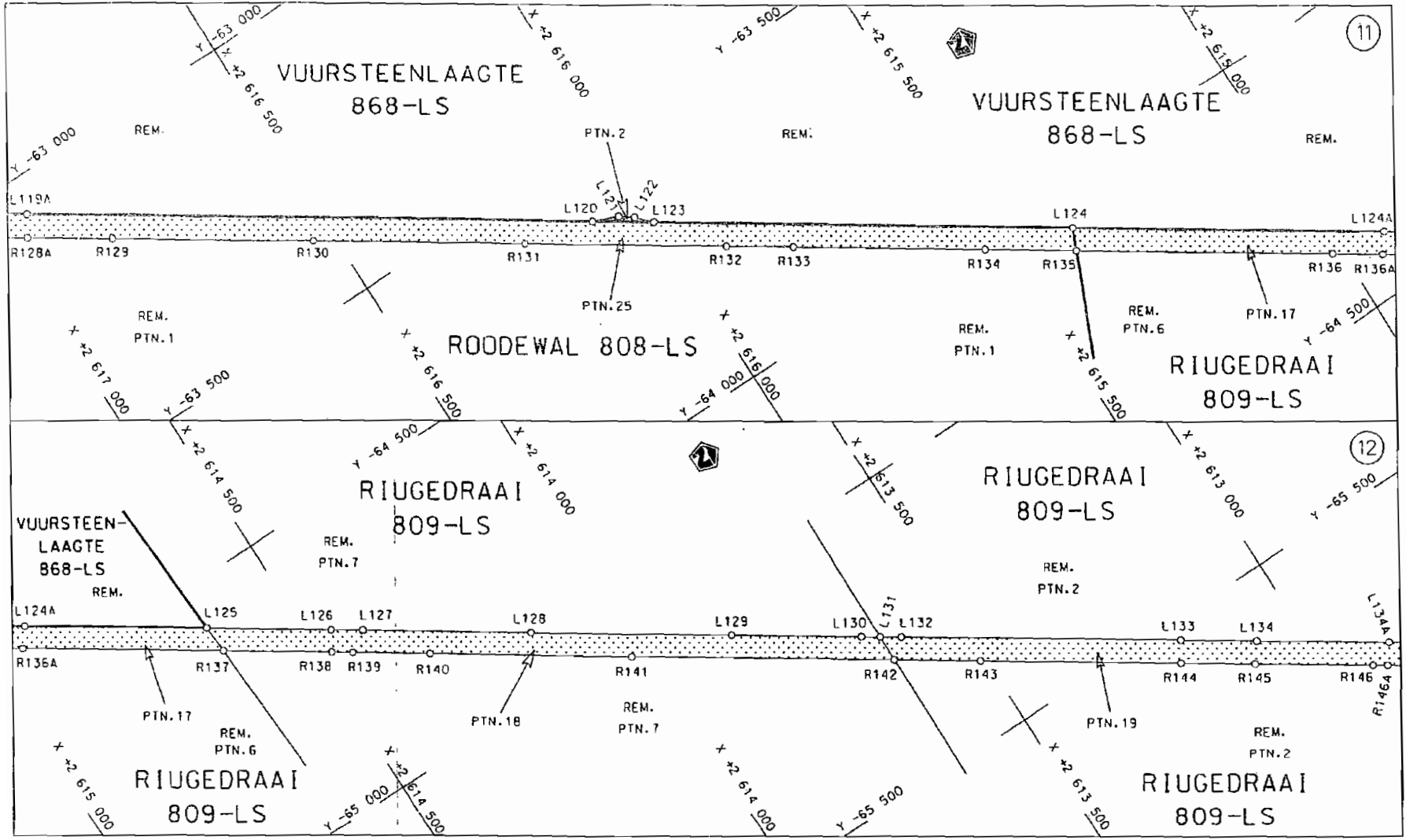
steldie padreserwe voor van 'n gedeelte
represents the road reserve of a portion
van Nasionale Roete N1 Seksie 28X
of National Route N1 Section 28X

Vel Sheet 4 van of 31
Plan P604/06



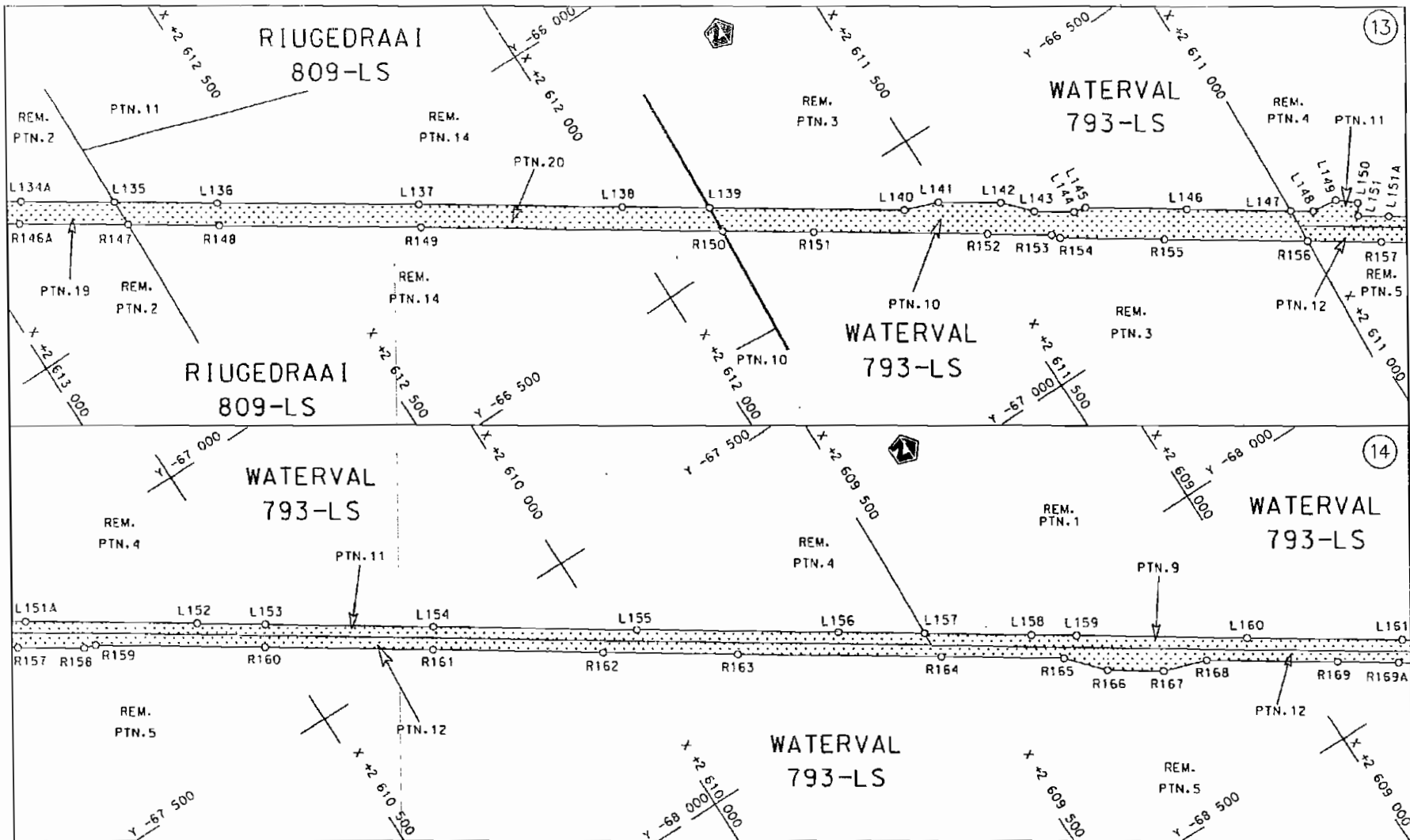
<p>Die Suid Afrikaanse Nasionale Padagentskap Beperk The South African National Roads Agency Limited</p>	<p>Die figuur getoon The figure shown</p> 	<p>steldie podreserwe voor van 'n gedeelte represents the road reserve of a portion van Nasionale Roete N1 Seksie of National Route Section 28X</p>	<p>Vel Sheet 5 van of 31 Plan P604/06</p>
--	--	---	---

D.O.9.A



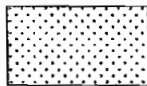
<p>Die Suid Afrikaanse Nasionale Padagentskop Beperk The South African National Roads Agency Limited</p>	<p>Die figuur getoon The figure shown</p>	<p>steldie padreserwe voor van 'n gedeelte represents the road reserve of a portion van Nasionale Roete N1 of National Route</p>	<p>Vel Sheet 6 van of 31 Plan P604/06</p>
--	---	--	---

D.O.9.A



Die Suid Afrikaanse Nasionale Padogentskop Beperk
The South African National Roads Agency Limited

Die figuur getoon
The figure shown

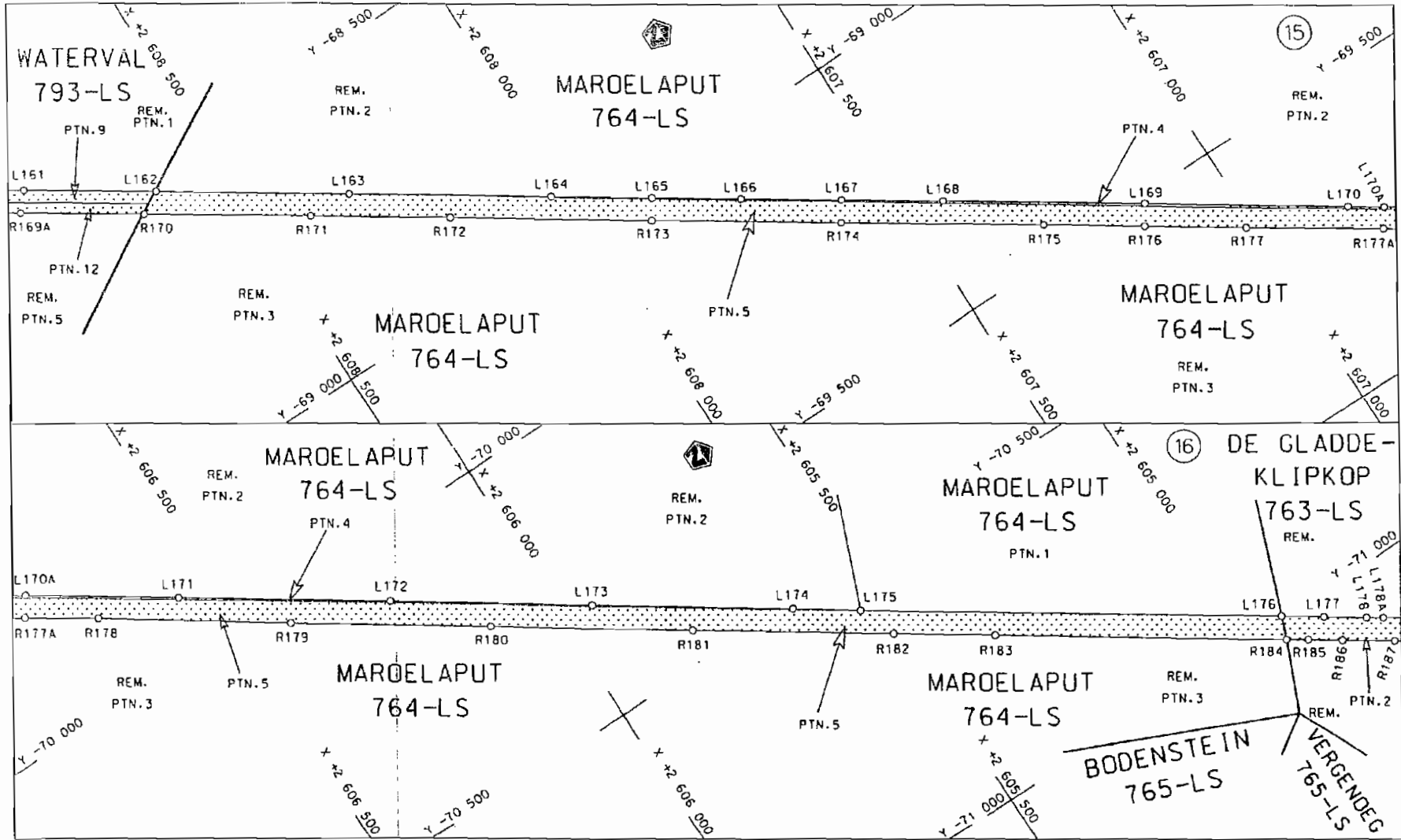


stede padreserwe voor van 'n gedeelte
represents the road reserve of a portion
van Nasionale Roete N1
of National Route N1
Seksie
Section

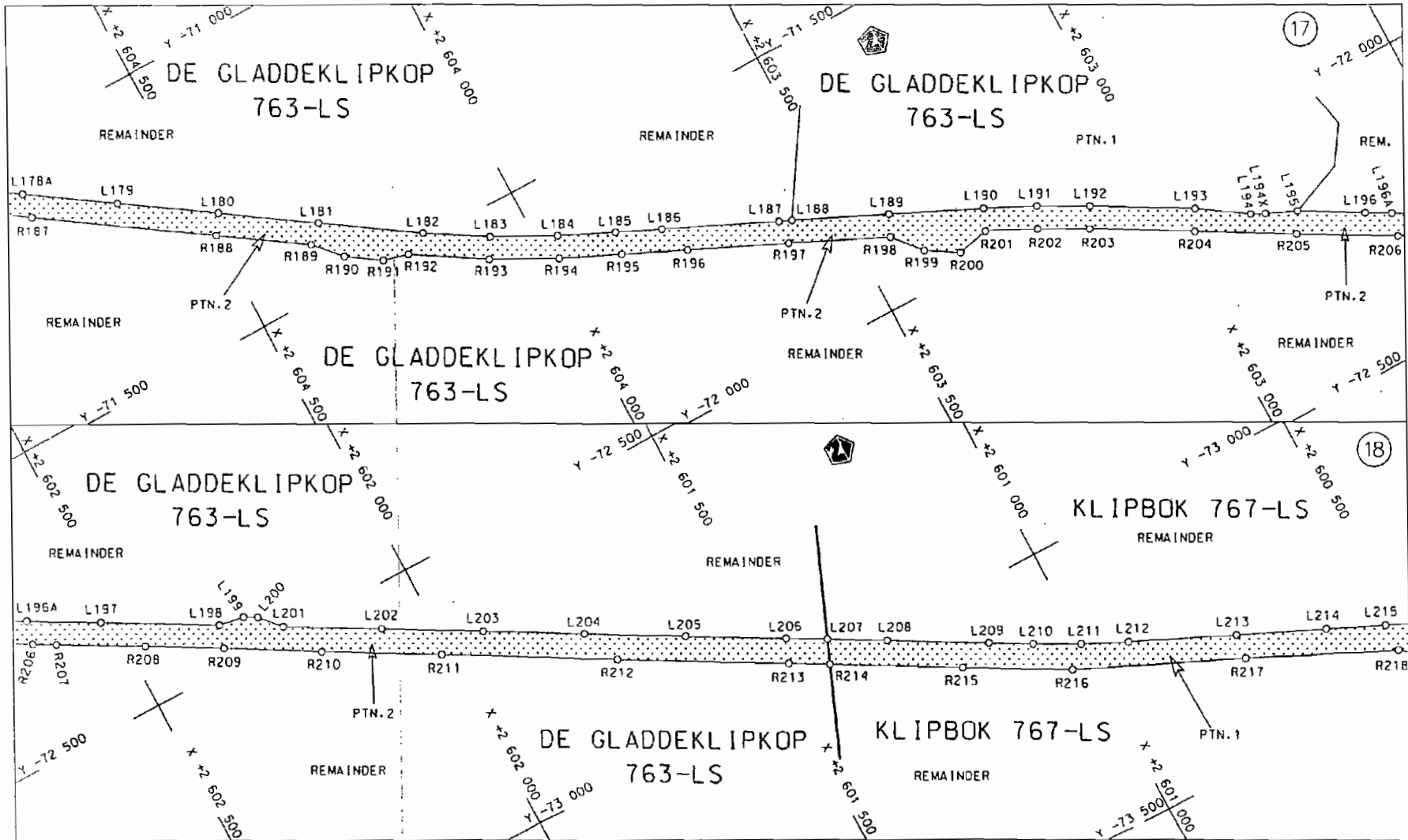
Vel
Sheet 7 von
of 31
Plan
P604/06


28X

D.O.9.A

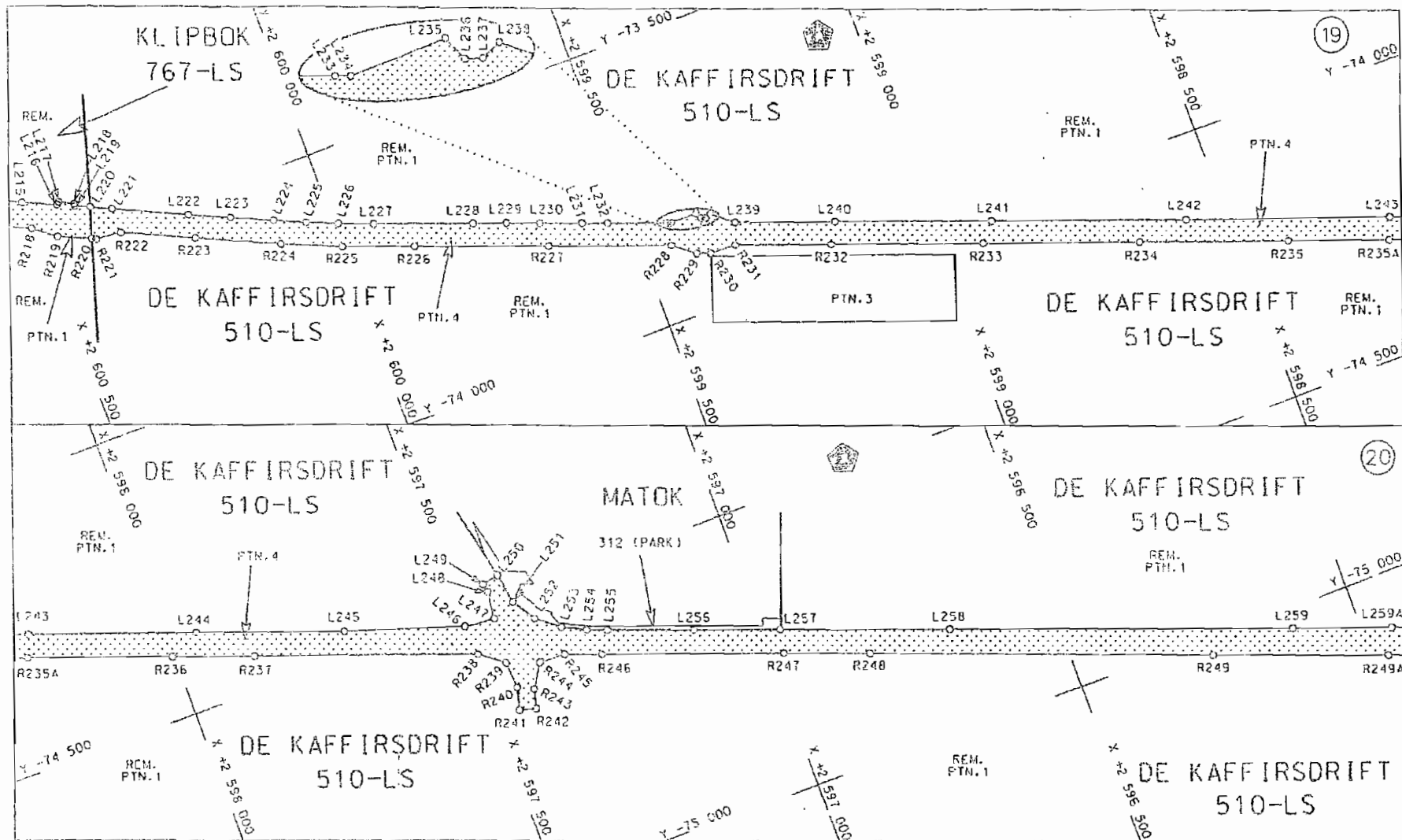


<p>Die Suid Afrikaanse Nasionale Padagentskap Beperk The South African National Roads Agency Limited</p>	<p>Die figuur getoon The figure shown</p>	<p>steldie padreserwe voor van 'n gedeelte represents the road reserve of a portion van Nasionale Roete N1 of National Route</p> <p>Seksie Section 28X</p>	<p>Vel Sheet 8 van 31 of of Plan P604/06</p>
--	---	--	--



<p>Die Suid Afrikaanse Nasionale Padagentskap Beperk The South African National Roads Agency Limited</p>	<p>Die figuur getoon The figure shown</p>		<p>steldie padreserwe voor van 'n gedeelte represents the road reserve of a portion van Nasionale Roete N1 of National Route N1</p> <p>Seksie Section</p> <p>28X</p>	<p>Vel Sheet 9 van of 31</p> <p>Plan P604/06</p>
--	---	--	--	--

D.O.9.A



Die Suid Afrikaanse Nasionale Padogentskap Beperk
The South African National Roads Agency Limited

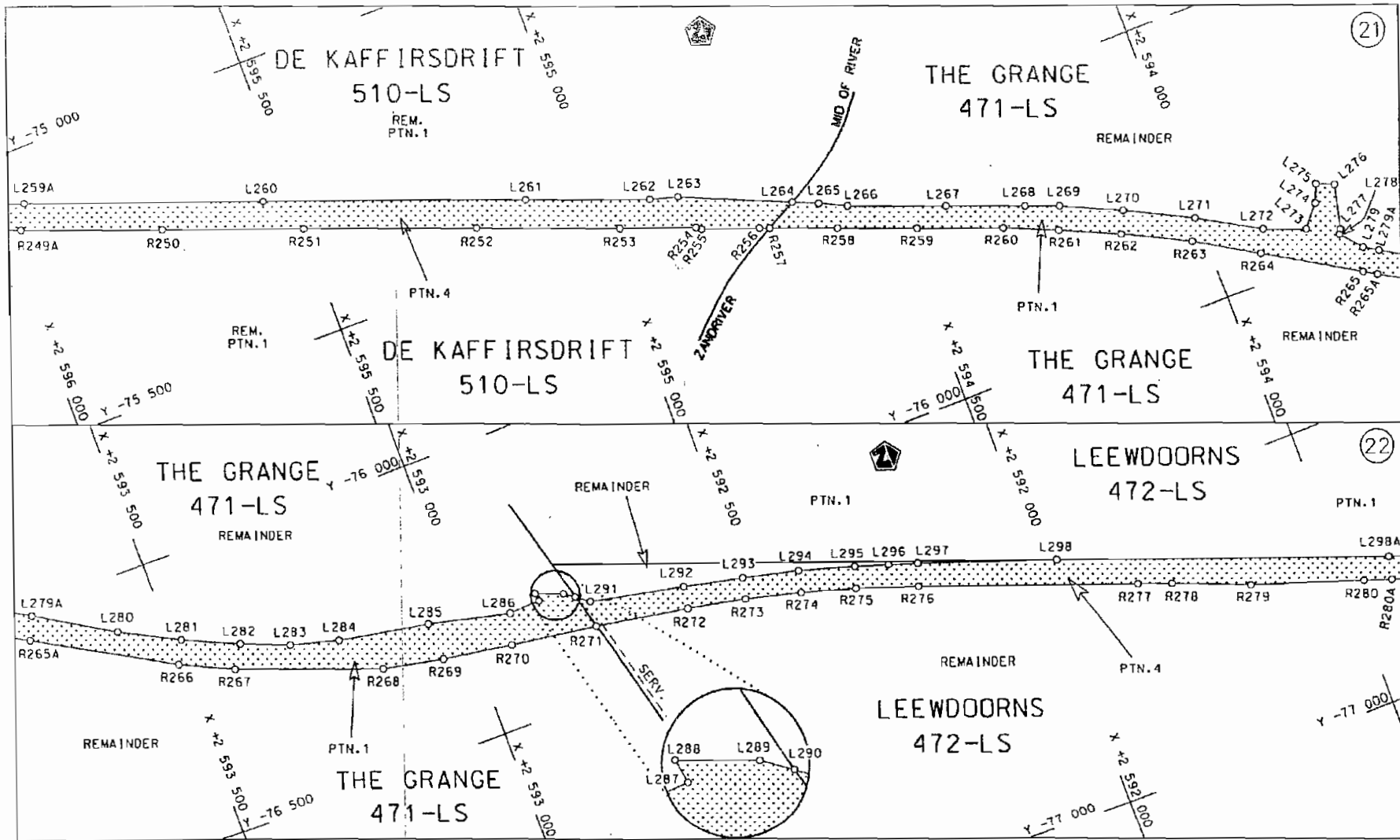
Die figuur getoon
The figure shown



stetidig padreserwe voor van 'n gedeelte
represents the road reserve of a portion
van Nasionale Roete N1 Seksie Section
of National Route 28X

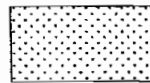
Vel van
Sheet 10 of 31

Plan P604/06



Die Suid Afrikaanse Nasionale Padagentskap Beperk
The South African National Roads Agency Limited

Die figuur getoon
The figure shown



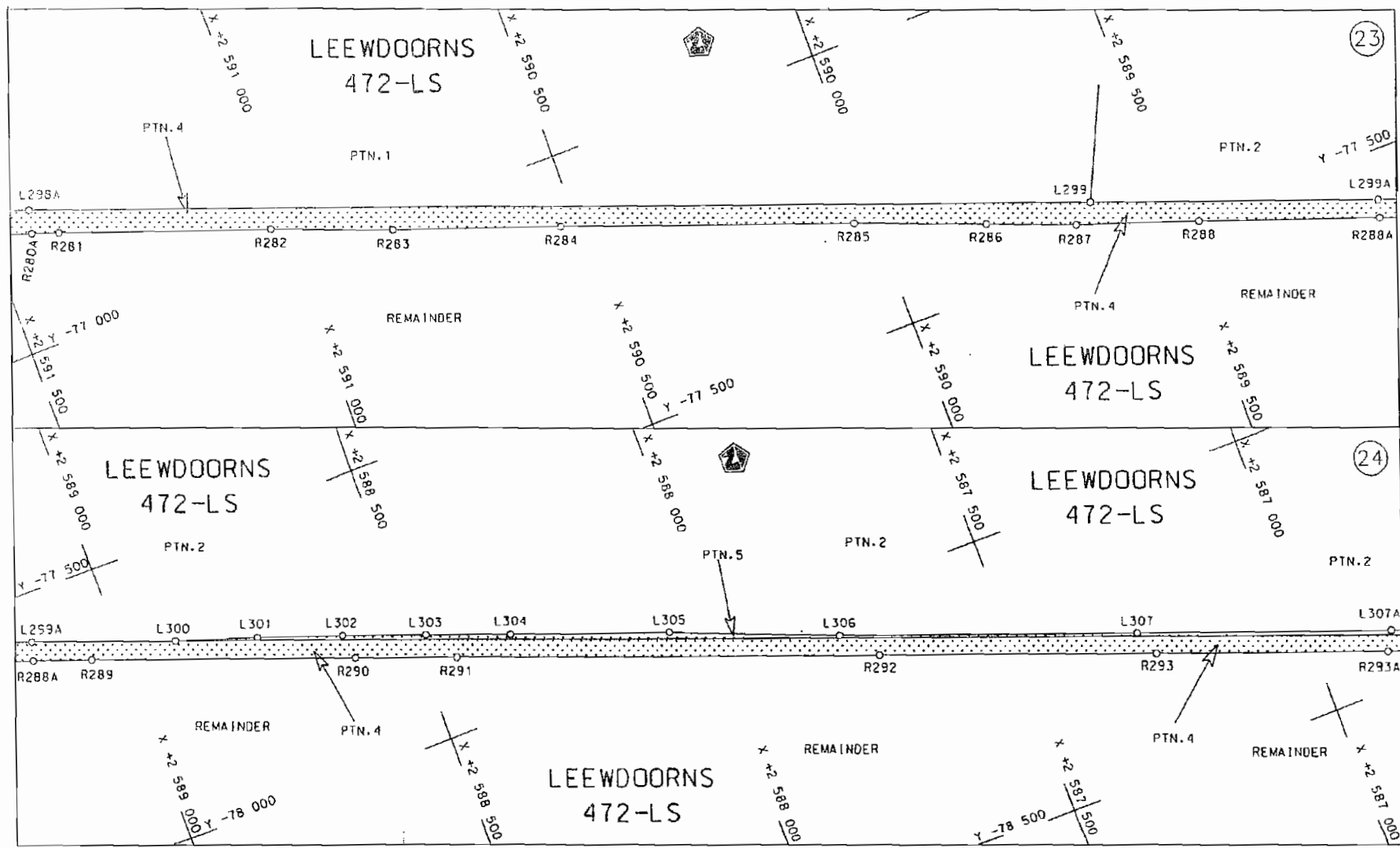
steldie padreserwe voor van 'n gedeelte
represents the road reserve of a portion
van Nasionale Roete N1 Sektie
of National Route Section


28X

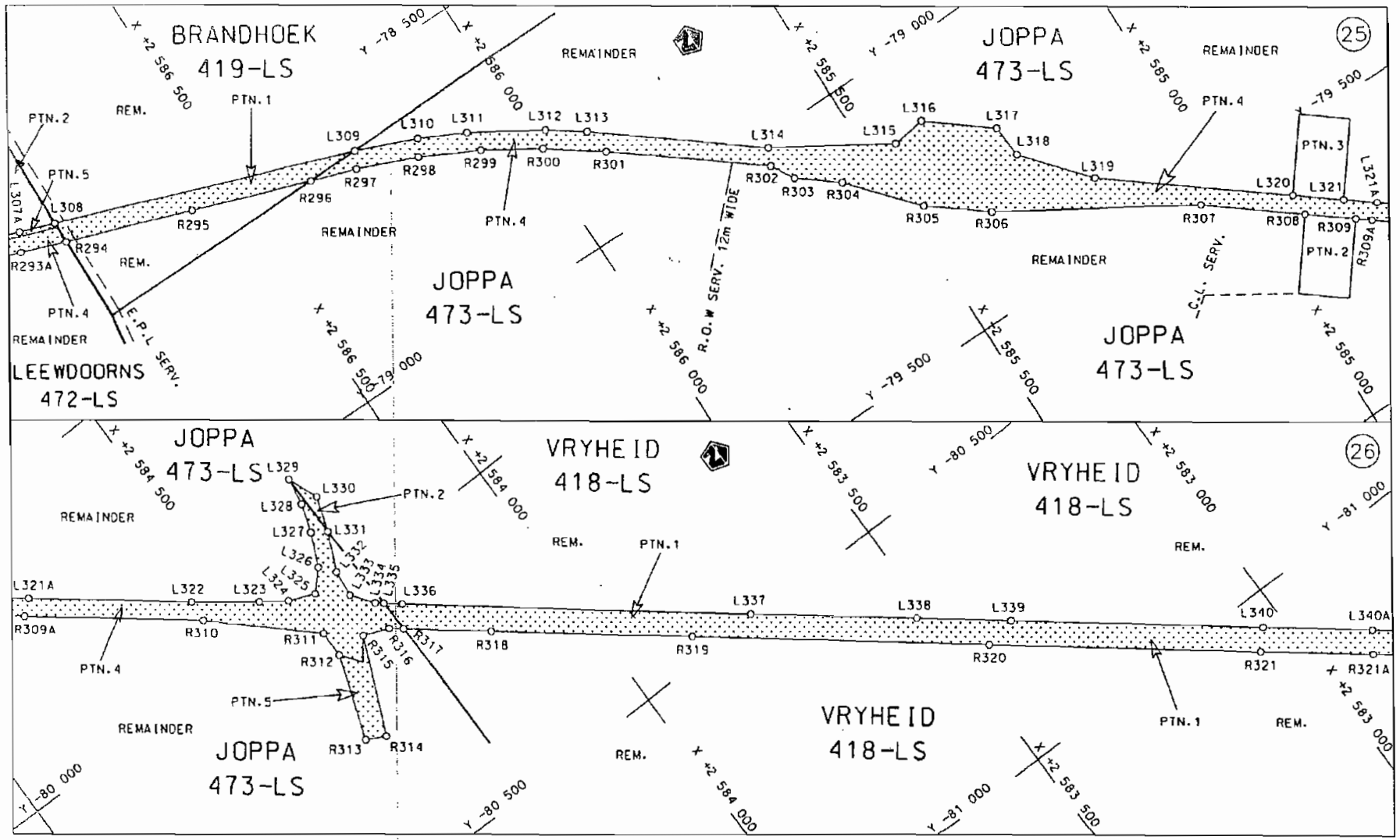
Vel
Sheet 11 of 31

Plan P604/06

D.O.9.A

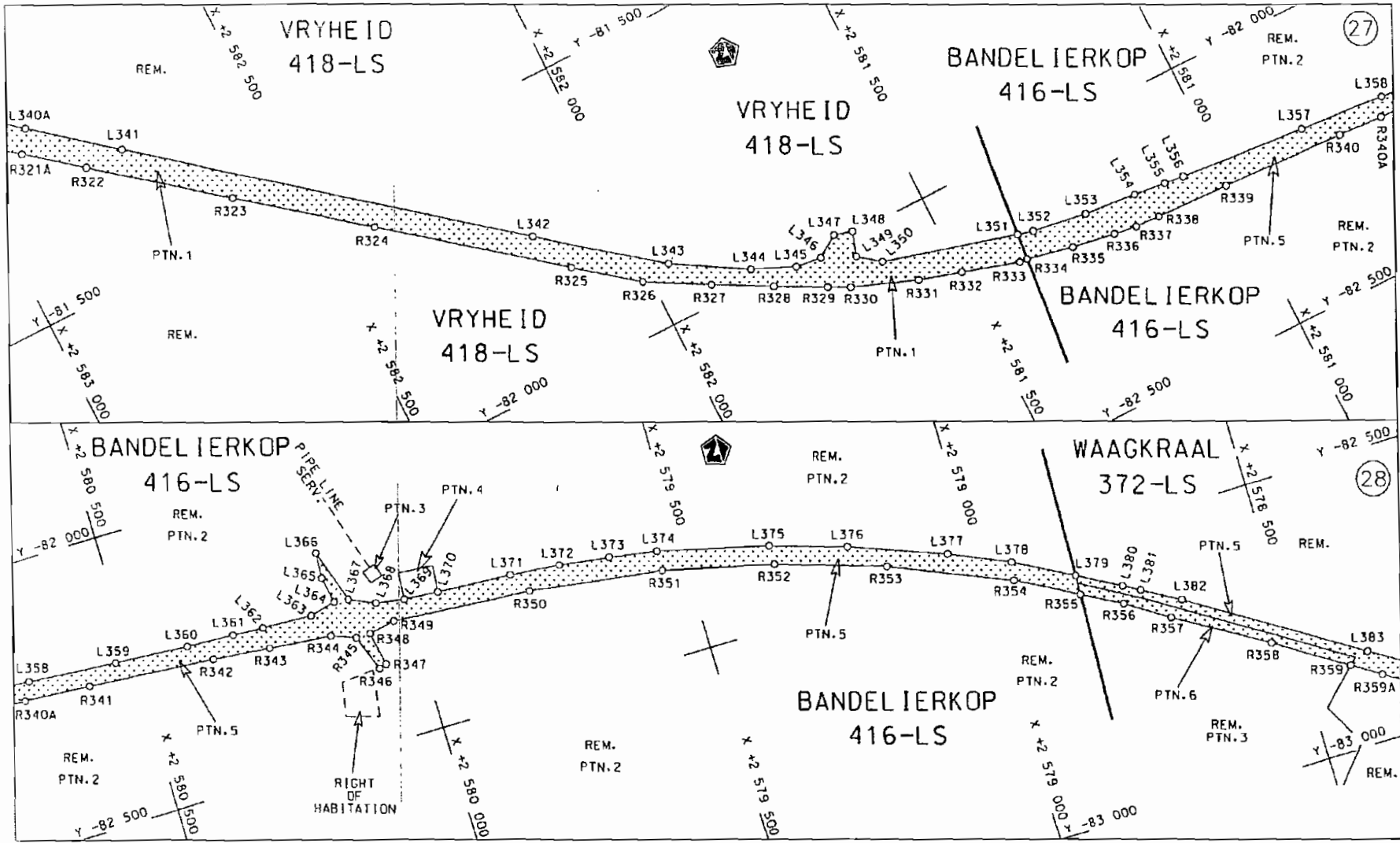



Die Suid Afrikaanse Nasionale Padagentskap Beperk	Die figuur getoon		steldie podreserwe voor van 'n gedeelte represents the road reserve of a portion van Nasionale Roete N1 Seksie of National Route Section	Vel Sheet 12 von 31 of of
The South African National Roads Agency Limited	The figure shown		N1 Seksie Section 28X	Plan P604/06

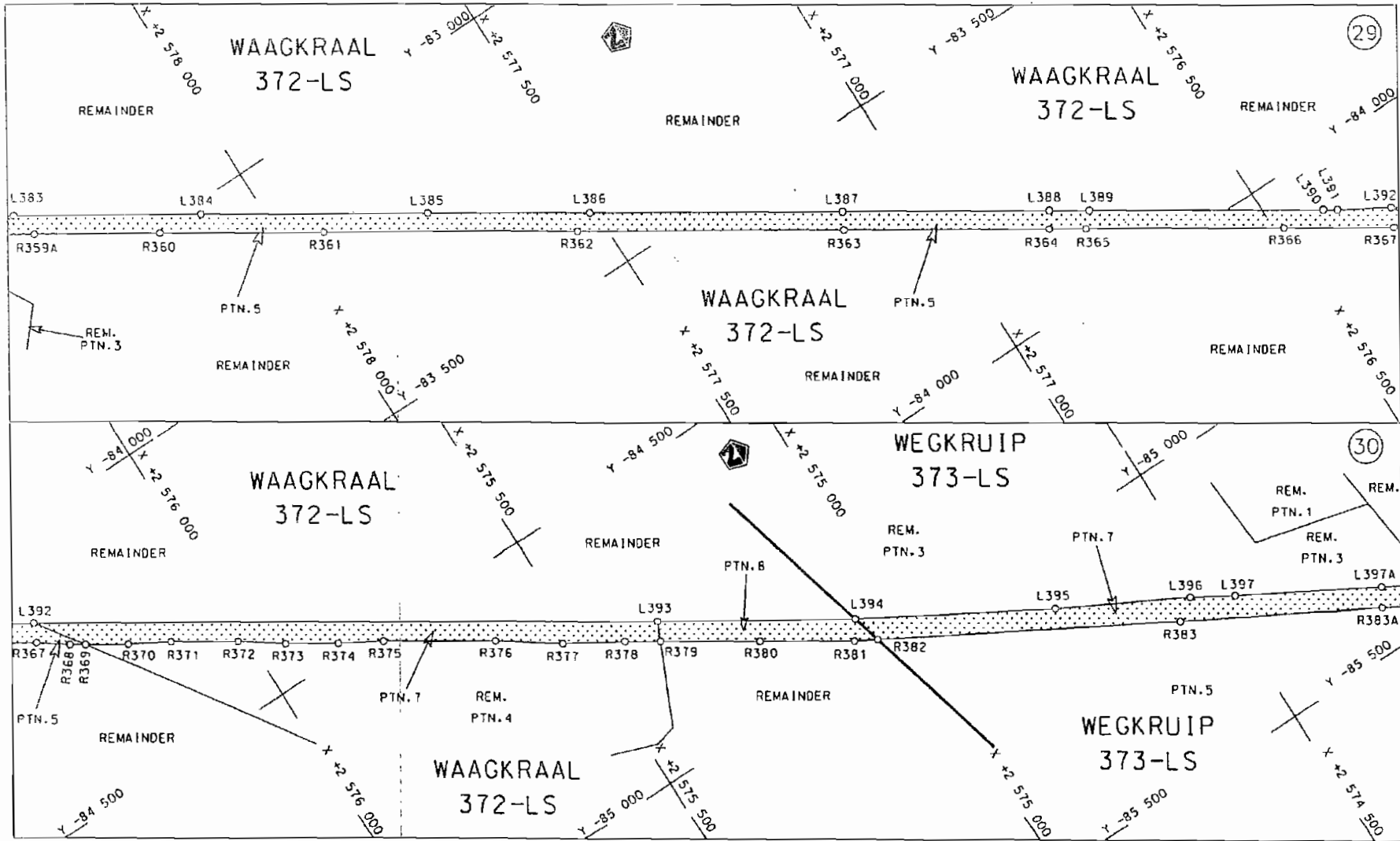


<p>Die Suid Afrikaanse Nasionale Padagentskap Beperk The South African National Roads Agency Limited</p>	<p>Die figuur getoon The figure shown</p>		<p>steldie podreserwe voor van 'n gedeelte represents the road reserve of a portion van Nasionale Roete N1 of National Route N1</p>	<p>Vel Sheet 13 von 31 of of</p>	<p>Plon P604/06</p>	<p>28X</p>	<p>Seksie Section</p>
--	---	--	---	--------------------------------------	---------------------	------------	---------------------------

D.O.9.A



<p>Die Suid Afrikaanse Nasionale Padagentskap Beperk The South African National Roads Agency Limited</p>	<p>Die figuur getoon The figure shown</p>		<p>steldie podreserwe voor van 'n gedeelte represents the road reserve of a portion van Nasionale Roete N1 Sektie 28X of National Route</p>	<p>Vel Sheet 14 van 31 Plan P604/06</p>
--	---	--	---	---



Die Suid Afrikaanse Nasionale Padagentskop Beperk
The South African National Roads Agency Limited

Die figuur getoon
The figure shown



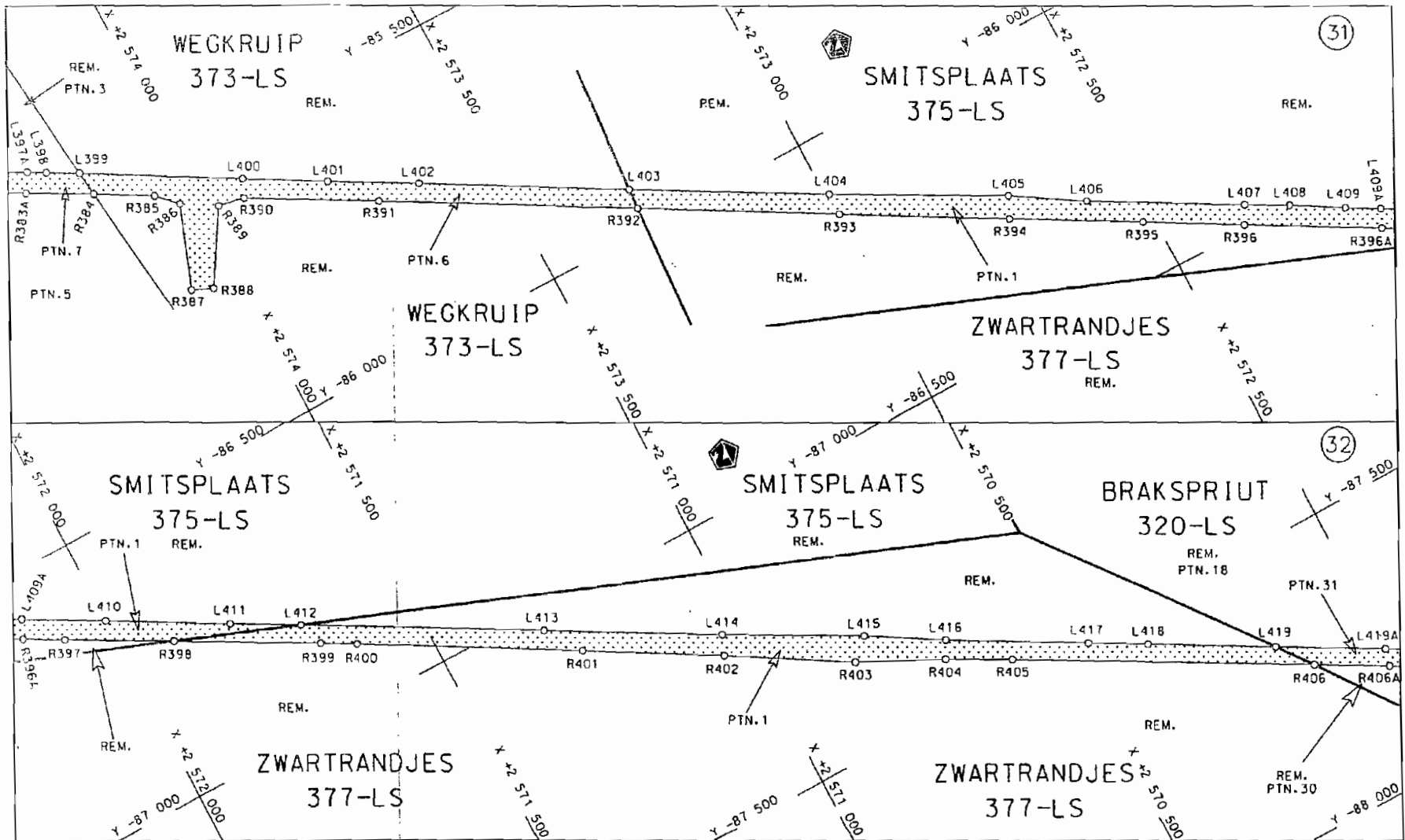
steldie padreserwe voor van 'n gedeelte
represents the road reserve of a portion
van Nasionale Roete N1
of National Route N1

Seksie 28X
Section

Vel
Sheet 15 van 31
of

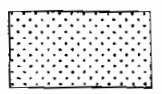
Plan P604/06

D.O.G.A



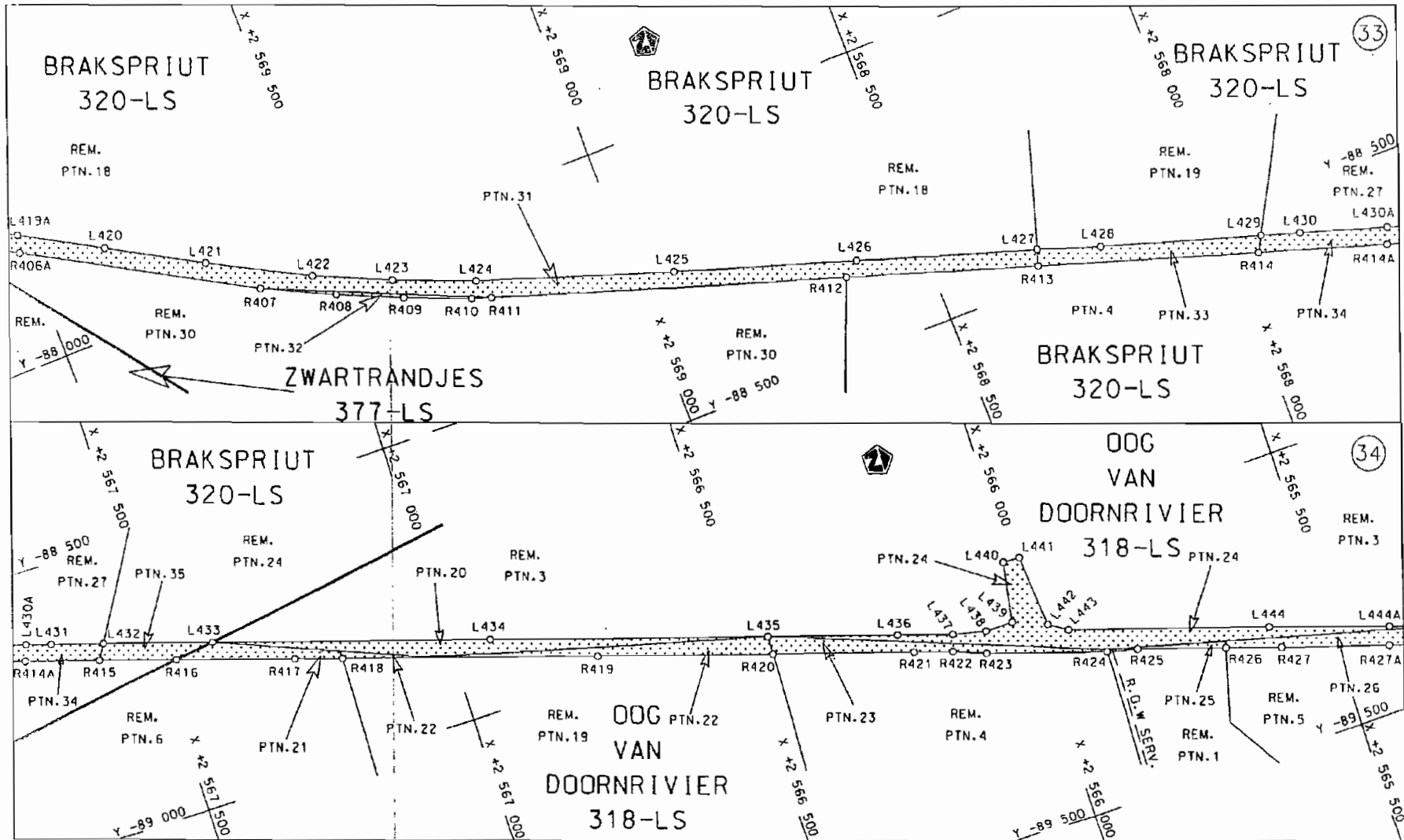
Die Suid Afrikaanse Nasionale Padagentskap Beperk
The South African National Roads Agency Limited

Die figuur getoon
The figure shown



stel die padreserwe voor van 'n gedeelte
represents the road reserve of a portion
van Nasionale Roete N1 Seksie 28X
of National Route Section

Vel 16 van 31
Sheet of
Plan P604/06



Die Suid Afrikaanse Nasionale Padagentskap Beperk
The South African National Roads Agency Limited

Die figuur getoon
The figure shown



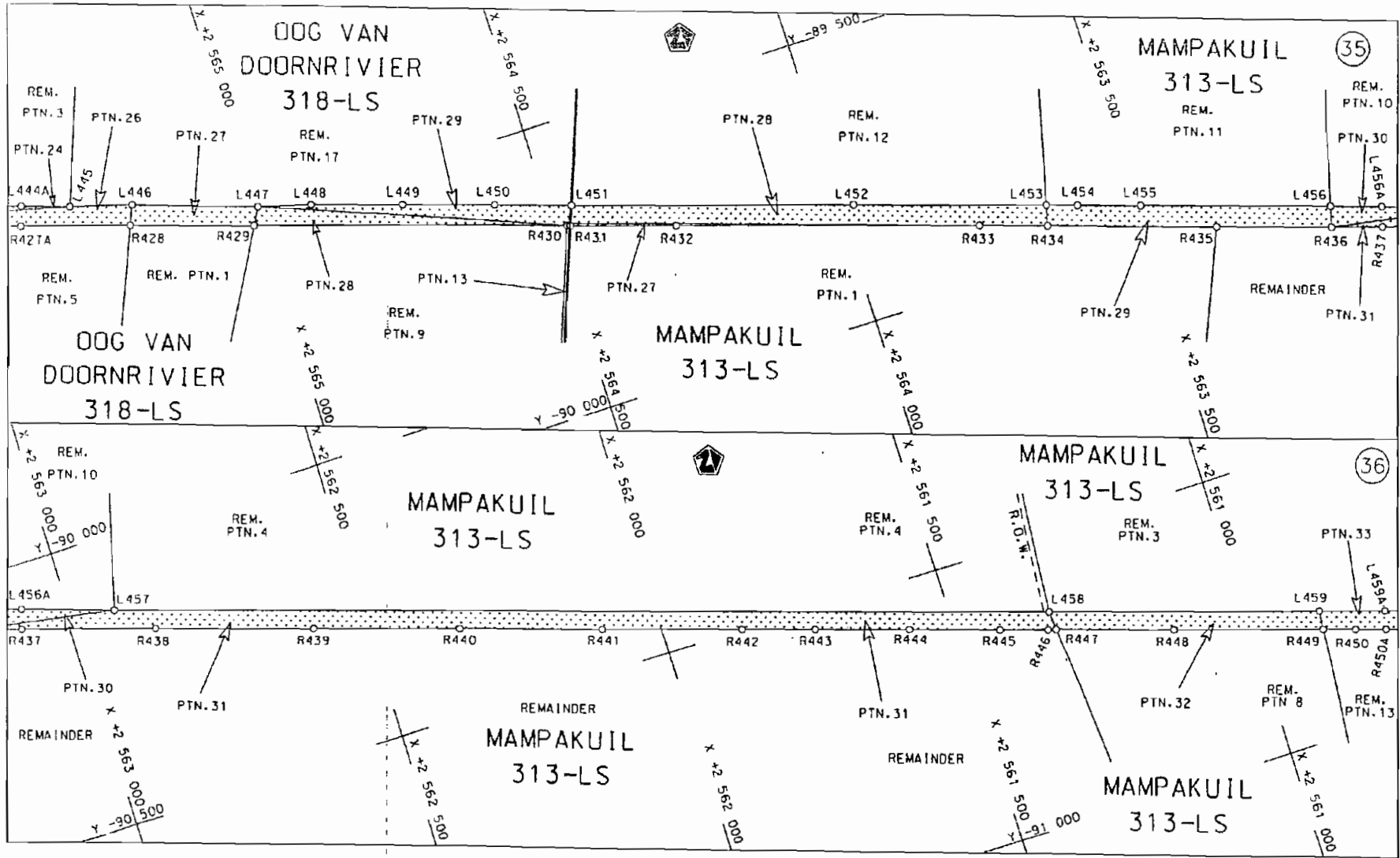
steldie padreserwe voor van 'n gedeelte
represents the road reserve of a portion
von Nasionale Roete N1 Seksie
of National Route Section

28X

Vel
Sheet 17 von
of 31

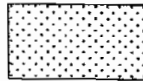
Plan P604/06

D.O.9.A



Die Suid Afrikaanse Nasionale Padagentskap Beperk
The South African National Roads Agency Limited

Die figuur getoon
The figure shown



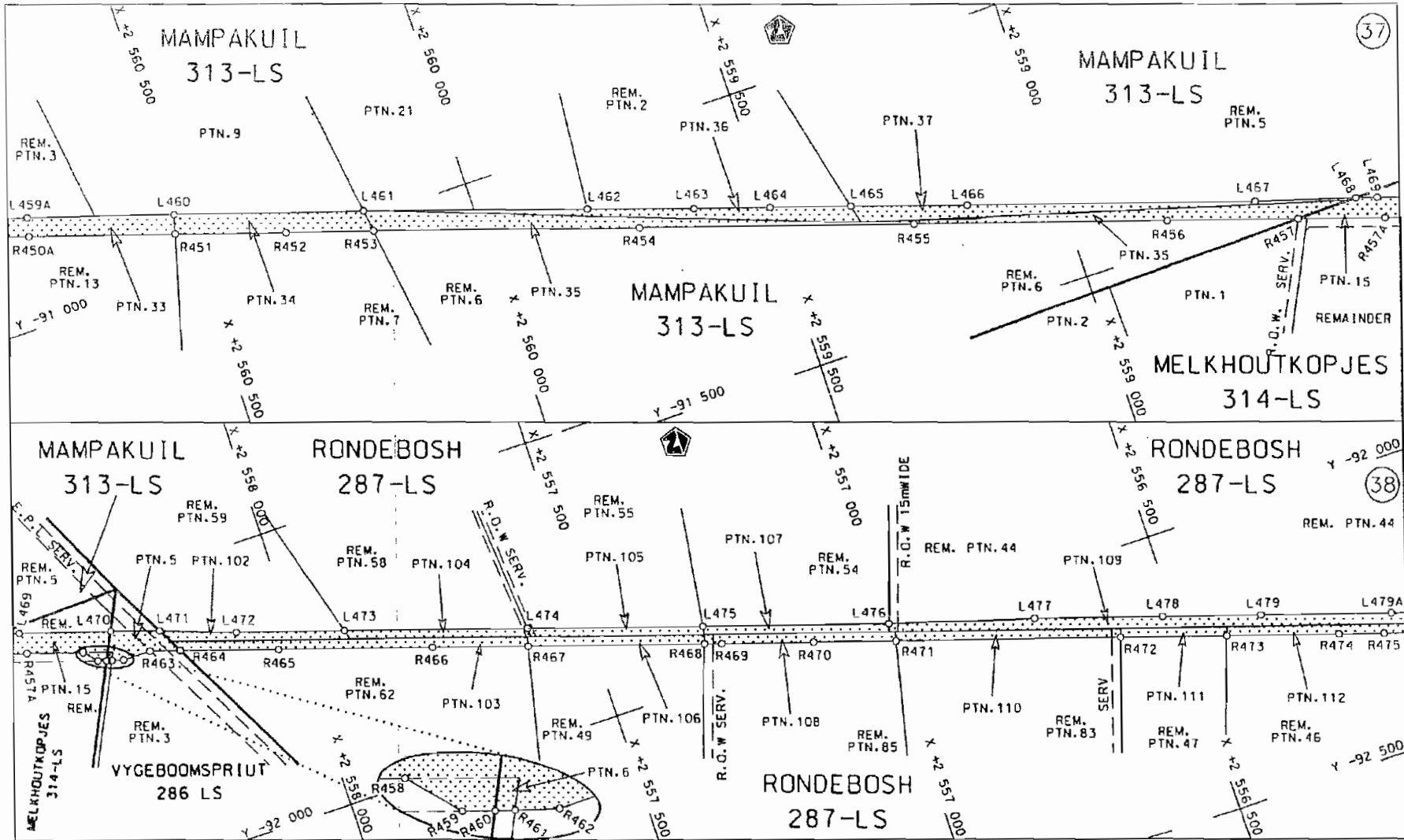
steldie padreserwe voor van 'n gedeelte
represents the road reserve of a portion
van Nasionale Roete
of National Route

N1 Seksie
Section 28X

Vel
Sheet 18 van
of 31

Plan
P604/06

D.O.9.A



Die Suid Afrikaanse Nasionale Padagentskap Beperk
The South African National Roads Agency Limited

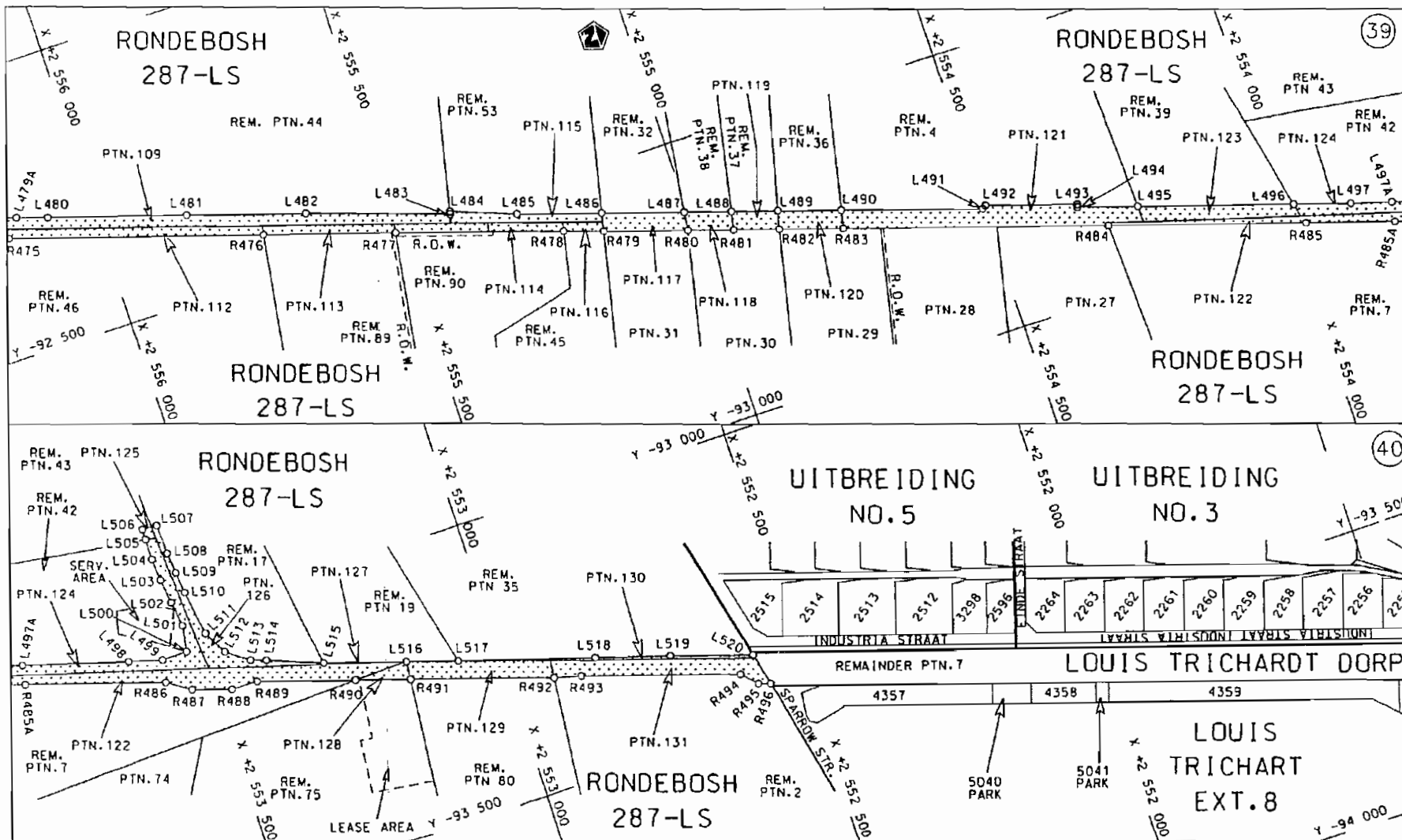
Die figuur getoon
The figure shown



steldie padreserwe voor van 'n gedeelte
represents the road reserve of a portion
van Nasionale Roete of National Route N1
Seksie Section 28X

Vel Sheet 19 of 31
Plan P604/06

D.O.9.A



<p>Die Suid Afrikaanse Nasionale Padagentskop Beperk The South African National Roads Agency Limited</p>	<p>Die figuur getoon The figure shown</p>		<p>steldie padreserwe voor van 'n gedeelte represents the road reserve of a portion van Nasionale Roete N1 of National Route</p>	<p>Vel Sheet 20 van 31 of of</p>
			<p>Seksie 28X</p>	<p>Plan P604/06</p>

PADRESERWE KOORDINATE				/	ROAD RESERVE CO-ORDINATES				
LINKERKANT/LEFT HAND SIDE					REGTERKANT/RIGHT HAND SIDE				
	Y	X	WG	29°	Y	X			
L1	-49 969.19	2 636 504.91		R1	-49 977.41	2 636 583.81			
L2	-49 983.67	2 636 478.32		R2	-49 985.91	2 636 559.19			
L3	-50 128.41	2 636 222.87		R3	-50 082.89	2 636 382.97			
L4	-50 151.79	2 636 182.11		R4	-50 106.64	2 636 341.34			
L5	-50 290.55	2 635 942.48		R5	-50 172.03	2 636 226.97			
L6	-50 452.87	2 635 662.24		R6	-50 189.82	2 636 195.83			
L7	-50 614.95	2 635 381.87		R7	-50 277.12	2 636 044.96			
L8	-50 637.92	2 635 341.73		R8	-50 368.07	2 635 887.60			
L9	-50 776.12	2 635 102.45		R9	-50 463.44	2 635 722.95			
L10	-50 888.46	2 634 909.02		R10	-50 563.47	2 635 549.68			
L11	-50 953.28	2 634 796.75		R11	-50 669.51	2 635 366.54			
L12	-51 093.89	2 634 553.29		R12	-50 782.45	2 635 171.46			
L13	-51 101.12	2 634 541.40		R13	-50 892.68	2 634 981.18			
L14	-51 112.58	2 634 521.53		R14	-50 924.60	2 634 971.73			
L15	-51 196.32	2 634 376.89		R15	-50 925.24	2 634 953.95			
L16	-51 293.89	2 634 216.96		R16	-50 932.40	2 634 912.54			
L17	-51 332.49	2 634 160.66		R17	-51 148.95	2 634 538.17			
L18	-51 379.19	2 634 093.13		R18	-51 191.56	2 634 464.16			
L19	-51 383.67	2 634 086.51		R19	-51 229.30	2 634 399.70			
L20	-51 445.68	2 634 004.66		R20	-51 254.61	2 634 359.09			
L21	-51 500.34	2 633 936.73		R21	-51 335.83	2 634 228.76			
L22	-51 620.13	2 633 802.59		R22	-51 363.54	2 634 185.48			
L23	-51 639.99	2 633 778.96		R23	-51 369.34	2 634 171.31			
L24	-51 743.65	2 633 672.04		R24	-51 476.68	2 634 029.76			
L25	-51 970.70	2 633 434.85		R25	-51 516.59	2 633 979.97			
L26	-52 180.95	2 633 215.16		R26	-51 531.12	2 633 962.24			
L27	-52 283.00	2 633 108.58		R27	-51 654.74	2 633 822.28			
L28	-52 412.41	2 632 973.10		R28	-51 772.50	2 633 699.51			
L29	-52 696.49	2 632 676.58		R29	-51 974.42	2 633 487.97			
L30	-52 980.08	2 632 379.54		R30	-52 002.89	2 633 458.15			
L31	-53 151.63	2 632 200.70		R31	-52 212.65	2 633 239.52			
L32	-53 154.18	2 632 198.03		R32	-52 313.93	2 633 133.14			
L33	-53 363.47	2 631 979.78		R33	-52 567.37	2 632 868.97			
L34	-53 488.19	2 631 848.66		R34	-52 816.13	2 632 608.37			
L35	-53 746.92	2 631 578.62		R35	-53 124.90	2 632 285.71			
L36	-53 861.04	2 631 458.96		R36	-53 377.01	2 632 022.99			
L37	-54 233.39	2 631 070.44		R37	-53 564.98	2 631 825.94			
L38	-54 615.33	2 630 670.90		R38	-53 777.03	2 631 604.10			
L39	-55 511.50	2 629 735.02		R39	-53 872.85	2 631 504.75			
L40	-55 529.45	2 629 701.62		R40	-54 243.59	2 631 116.58			
L41	-55 550.03	2 629 679.54		R41	-54 521.21	2 630 826.76			
L42	-55 589.75	2 629 652.59		R42	-54 894.32	2 630 437.39			
L43	-55 779.53	2 629 455.12		R43	-55 168.25	2 630 151.71			
L44	-56 045.65	2 629 181.31		R44	-55 542.22	2 629 759.89			
L45	-56 095.24	2 629 129.42		R45	-55 636.72	2 629 662.07			
L46	-56 288.86	2 628 922.92		R46	-55 643.43	2 629 640.06			
L47	-56 441.37	2 628 763.92		R47	-55 672.63	2 629 638.39			
L48	-56 786.79	2 628 403.00		R48	-55 725.05	2 629 583.79			
L49	-56 920.23	2 628 266.15		R49	-55 770.65	2 629 535.93			
L50	-56 961.93	2 628 219.92		R50	-55 779.20	2 629 527.13			
L51	-57 187.01	2 627 985.21		R51	-55 803.51	2 629 487.50			
					Vel	21	Van	31	P604/06
					Sheet		of		

PADRESERWE KOORDINATE				ROAD RESERVE CO-ORDINATES				
LINKERKANT/LEFT HAND SIDE				REGTERKANT/RIGHT HAND SIDE				
	y	X	WG	29°	y	X		
L52	-57 271.27	2 627	897.17	R52	-55 824.06	2 629	466.25	
L53	-57 279.67	2 627	888.34	R53	-56 069.22	2 629	210.00	
L54	-57 435.87	2 627	726.57	R54	-57 109.45	2 628	123.28	
L55	-57 511.15	2 627	646.78	R55	-57 467.07	2 627	749.75	
L56	-57 511.67	2 627	647.25	R56	-58 153.93	2 627	032.02	
L57	-57 518.37	2 627	640.24	R57	-58 286.80	2 626	893.36	
L58	-57 517.86	2 627	639.79	R58	-58 828.14	2 626	327.56	
L59	-57 760.44	2 627	385.83	R59	-59 313.50	2 625	820.52	
L60	-58 123.86	2 627	006.66	R60	-59 330.10	2 625	826.10	
L61	-58 612.51	2 626	496.31	R61	-59 347.30	2 625	808.10	
L62	-59 247.65	2 625	831.73	R62	-59 341.10	2 625	791.67	
L63	-59 425.63	2 625	647.70	R63	-59 437.71	2 625	690.49	
L64	-59 547.40	2 625	518.61	R64	-59 451.83	2 625	676.17	
L65	-59 672.10	2 625	388.35	R65	-59 700.59	2 625	416.20	
L66	-59 796.46	2 625	258.19	R66	-59 824.98	2 625	286.24	
L67	-59 887.15	2 625	163.04	R67	-59 914.83	2 625	192.01	
L68	-59 950.85	2 625	088.30	R68	-59 981.41	2 625	113.31	
L69	-60 053.53	2 624	941.52	R69	-60 028.54	2 625	050.84	
L70	-60 114.34	2 624	827.40	R70	-60 124.53	2 624	898.93	
L71	-60 210.56	2 624	618.73	R71	-60 199.29	2 624	742.68	
L72	-60 384.36	2 624	223.78	R72	-60 229.61	2 624	674.24	
L73	-60 591.96	2 623	753.21	R73	-60 271.65	2 624	578.21	
L74	-60 665.59	2 623	586.06	R74	-60 346.84	2 624	408.74	
L75	-60 708.55	2 623	488.10	R75	-60 410.83	2 624	262.46	
L76	-60 767.76	2 623	335.75	R76	-60 587.37	2 623	861.94	
L77	-60 771.56	2 623	334.64	R77	-60 619.11	2 623	789.21	
L78	-60 773.62	2 623	329.95	R78	-60 682.84	2 623	644.99	
L79	-60 771.60	2 623	325.05	R79	-60 755.19	2 623	480.10	
L80	-60 793.69	2 623	246.67	R80	-60 818.25	2 623	307.79	
L81	-60 816.84	2 623	142.17	R81	-60 841.04	2 623	221.01	
L82	-60 849.37	2 622	930.06	R82	-60 872.50	2 623	044.47	
L83	-60 886.32	2 622	683.16	R83	-60 897.60	2 622	874.47	
L84	-60 899.94	2 622	591.19	R84	-60 928.60	2 622	667.31	
L85	-60 986.71	2 622	005.73	R85	-60 959.12	2 622	462.87	
L86	-61 011.30	2 621	840.84	R86	-61 001.01	2 622	180.63	
L87	-61 016.08	2 621	806.12	R87	-61 053.85	2 621	821.71	
L88	-61 059.28	2 621	506.46	R88	-61 075.26	2 621	675.47	
L89	-61 049.51	2 621	464.65	R89	-61 098.67	2 621	510.08	
L90	-61 059.25	2 621	402.22	R90	-61 148.69	2 621	142.49	
L91	-61 074.15	2 621	374.40	R91	-61 170.60	2 621	087.93	
L92	-61 105.32	2 621	167.15	R92	-61 180.67	2 621	012.90	
L93	-61 152.58	2 620	811.51	R93	-61 172.05	2 620	950.81	
L94	-61 178.28	2 620	618.11	R94	-61 217.55	2 620	618.45	
L95	-61 193.40	2 620	504.28	R95	-61 225.23	2 620	567.23	
L96	-61 207.46	2 620	393.84	R96	-61 247.23	2 620	396.74	
L97	-61 210.90	2 620	369.96	R97	-61 275.69	2 620	219.18	
L98	-61 237.35	2 620	211.08	R98	-61 259.09	2 620	399.06	
L99	-61 255.69	2 620	123.49	R99	-61 258.61	2 620	478.30	
LIDO	-61 269.22	2 620	059.91	R100	-61 265.57	2 620	557.17	
L101	-61 314.62	2 619	887.10	R101	-61 285.73	2 620	509.71	
L102	-61 329.08	2 619	838.94	R102	-61 294.92	2 620	367.74	
				Vel	22	Van	31	P604/06
				Sheet		of		

PADRESERWE KOORDINATE				/	ROAD RESERVE CO-ORDINATES						
LINKERKANT/LEFT HAND SIDE					REGTERKANT/RIGHT HAND SIDE						
	Y	X	WG	29°	Y	X					
L103	-61	335.29	2	619	817.54	R103	-61	330.13	2	620	227.87
L104	-61	342.41	2	619	793.49	R104	-61	336.83	2	620	185.96
L105	-61	369.53	2	619	713.96	R105	-61	298.74	2	620	115.83
L106	-61	432.13	2	619	547.24	R106	-61	352.34	2	619	898.95
L107	-61	454.66	2	619	492.59	R107	-61	389.64	2	619	781.60
L108	-61	505.17	2	619	379.19	R108	-61	407.22	2	619	727.01
L109	-61	585.33	2	619	218.34	R109	-61	469.59	2	619	560.64
L110	-61	611.71	2	619	178.45	R110	-61	500.46	2	619	486.64
L111	-61	673.69	2	619	061.70	R111	-61	541.02	2	619	396.05
L112	-61	740.51	2	618	953.67	R112	-61	592.89	2	619	289.41
L113	-61	928.70	2	618	666.63	R113	-61	644.41	2	619	191.95
L114	-62	038.14	2	618	500.74	R114	-61	707.07	2	619	082.67
L115	-62	136.00	2	618	352.52	R115	-61	736.33	2	619	032.84
L116	-62	234.94	2	618	201.54	R116	-61	774.10	2	618	974.82
L117	-62	334.01	2	618	051.39	R117	-61	872.50	2	618	824.77
L118	-62	530.38	2	617	752.61	R118	-61	959.21	2	618	693.12
L119	-62	717.66	2	617	467.44	R119	-62	070.54	2	618	524.22
L120	-63	620.11	2	616	096.35	R120	-62	136.73	2	618	423.49
L121	-63	638.11	2	616	052.01	R121	-62	195.67	2	618	342.42
L122	-63	655.05	2	616	029.10	R122	-62	239.50	2	618	275.75
L123	-63	680.64	2	616	004.39	R123	-62	301.36	2	618	173.21
L124	-64	092.34	2	615	378.89	R124	-62	367.48	2	618	072.54
L125	-64	576.32	2	614	643.58	R125	-62	433.35	2	617	972.17
L126	-64	699.64	2	614	457.15	R126	-62	565.14	2	617	772.30
L127	-64	731.02	2	614	409.02	R127	-62	752.71	2	617	487.31
L128	-64	896.18	2	614	158.01	R128	-62	895.18	2	617	271.10
L129	-65	093.90	2	613	857.84	R129	-63	181.08	2	616	836.39
L130	-65	221.92	2	613	663.43	R130	-63	378.69	2	616	536.64
L131	-65	239.93	2	613	635.82	R131	-63	587.69	2	616	219.25
L132	-65	260.25	2	613	604.79	R132	-63	785.94	2	615	917.51
L133	-65	533.84	2	613	188.86	R133	-63	852.10	2	615	816.88
L134	-65	607.58	2	613	077.09	R134	-64	039.66	2	615	531.55
L135	-65	829.23	2	612	740.43	R135	-64	129.46	2	615	395.54
L136	-65	929.60	2	612	587.98	R136	-64	379.45	2	615	015.69
L137	-66	127.31	2	612	287.89	R137	-64	625.97	2	614	640.77
L138	-66	325.04	2	611	987.03	R138	-64	733.23	2	614	477.76
L139	-66	410.34	2	611	857.25	R139	-64	754.64	2	614	445.68
L140	-66	600.23	2	611	568.60	R140	-64	830.34	2	614	330.60
L141	-66	620.96	2	611	510.75	R141	-65	028.44	2	614	029.41
L142	-66	681.37	2	611	418.23	R142	-65	286.56	2	613	636.44
L143	-66	726.27	2	611	376.76	R143	-65	370.88	2	613	508.96
L144	-66	765.09	2	611	318.05	R144	-65	567.45	2	613	210.53
L145	-66	769.54	2	611	296.77	R145	-65	639.03	2	613	101.46
L146	-66	867.95	2	611	147.78	R146	-65	754.79	2	612	925.83
L147	-66	967.91	2	610	996.54	R147	-65	875.57	2	612	741.70
L148	-66	989.97	2	610	963.02	R148	-65	964.57	2	612	606.57
L149	-66	995.67	2	610	918.69	R149	-66	162.39	2	612	306.49
L150	-67	020.38	2	610	888.67	R150	-66	456.74	2	611	859.73
L151	-67	039.79	2	610	900.62	R151	-66	545.81	2	611	723.67
L152	-67	237.57	2	610	599.99	R152	-66	714.30	2	611	467.81
L153	-67	304.13	2	610	499.14	R153	-66	776.92	2	611	372.91

Vel	23	Van	31	P604/06
Sheet		of		

PADRESERWE KOORDINATE				/ ROAD RESERVE CO-ORDINATES				
LINKERKANT/LEFT HAND SIDE				REGTERKANT/RIGHT HAND SIDE				
	y	X	WG	29°	Y	X		
L154	-67 469.21	2 610	249.11	R154	-66 789.13	2 611	363.06	
L155	-67 666.65	2 609	948.43	R155	-66 890.40	2 611	209.51	
L156	-67 864.70	2 609	647.84	R156	-67 027.87	2 610	999.77	
L157	-67 947.47	2 609	521.67	R157	-67 099.72	2 610	891.02	
L158	-68 051.72	2 609	363.70	R158	-67 165.38	2 610	791.67	
L159	-68 095.66	2 609	296.69	R159	-67 172.04	2 610	771.88	
L160	-68 261.03	2 609	046.12	R160	-67 337.09	2 610	521.24	
L161	-68 411.24	2 608	816.77	R161	-67 502.02	2 610	271.25	
L162	-68 541.48	2 608	618.30	R162	-67 667.08	2 610	020.28	
L163	-68 733.69	2 608	328.09	R163	-67 799.03	2 609	819.92	
L164	-68 931.35	2 608	027.06	R164	-67 996.86	2 609	518.98	
L165	-69 030.47	2 607	876.95	R165	-68 116.79	2 609	337.00	
L166	-69 118.45	2 607	743.53	R166	-68 175.67	2 609	283.64	
L167	-69 217.02	2 607	592.62	R167	-68 230.21	2 609	200.70	
L168	-69 315.87	2 607	442.12	R168	-68 255.26	2 609	126.57	
L169	-69 514.05	2 607	141.68	R169	-68 381.77	2 608	934.09	
L170	-69 713.40	2 606	841.71	R170	-68 563.35	2 608	658.38	
L171	-69 901.53	2 606	558.76	R171	-68 727.33	2 608	409.05	
L172	-70 111.96	2 606	242.18	R172	-68 865.58	2 608	199.29	
L173	-70 311.35	2 605	942.54	R173	-69 063.36	2 607	898.67	
L174	-70 510.73	2 605	642.93	R174	-69 250.32	2 607	614.64	
L175	-70 578.69	2 605	542.38	R175	-69 448.39	2 607	313.69	
L176	-70 991.41	2 604	919.23	R176	-69 547.42	2 607	163.41	
L177	-71 033.53	2 604	857.08	R177	-69 646.95	2 607	013.49	
L178	-71 075.61	2 604	794.31	R178	-69 852.56	2 606	699.70	
L179	-71 186.43	2 604	626.95	R179	-70 045.69	2 606	414.02	
L180	-71 286.28	2 604	476.74	R180	-70 244.81	2 606	114.60	
L181	-71 385.83	2 604	327.38	R181	-70 444.57	2 605	814.30	
L182	-71 488.43	2 604	172.89	R182	-70 643.60	2 605	514.90	
L183	-71 550.69	2 604	070.39	RIB3	-70 743.40	2 605	365.20	
L184	-71 604.61	2 603	963.34	R184	-71 029.88	2 604	934.44	
L185	-71 647.25	2 603	869.43	R185	-71 051.02	2 604	901.64	
L186	-71 681.53	2 603	793.35	R186	-71 084.53	2 604	851.90	
L187	-71 767.90	2 603	602.34	R187	-71 136.36	2 604	774.03	
L188	-71 777.13	2 603	581.17	R188	-71 319.37	2 604	499.13	
L189	-71 848.12	2 603	424.16	R189	-71 413.52	2 604	357.60	
L190	-71 917.51	2 603	270.92	R190	-71 459.60	2 604	315.49	
L191	-71 957.99	2 603	186.04	R191	-71 497.90	2 604	257.86	
L192	-72 002.15	2 603	102.92	R192	-71 509.55	2 604	213.40	
L193	-72 092.54	2 602	941.15	R193	-71 584.76	2 604	090.75	
L194	-72 146.64	2 602	859.60	R194	-71 640.89	2 603	979.62	
L195	-72 180.64	2 602	784.02	R195	-71 686.73	2 603	878.30	
L196	-72 239.37	2 602	679.44	R196	-71 735.28	2 603	770.80	
L197	-72 326.99	2 602	522.58	R197	-71 810.08	2 603	605.76	
L198	-72 429.98	2 602	338.24	R198	-71 885.13	2 603	440.99	
L199	-72 437.92	2 602	293.73	R199	-71 933.58	2 603	399.19	
L200	-72 450.29	2 602	271.62	R200	-71 966.80	2 603	344.50	
L201	-72 486.29	2 602	237.56	R201	-71 954.47	2 603	287.42	
L202	-72 571.12	2 602	085.77	R202	-71 994.13	2 603	204.14	
L203	-72 658.93	2 601	928.81	R203	-72 037.33	2 603	122.44	
L204	-72 746.62	2 601	771.76	R204	-72 127.87	2 602	960.56	
				Vel	24	Van	31	P604/06
				Sheet		of		

PADRESERWE KOORDINATE				ROAD RESERVE CO-ORDINATES				
LINKERKANT/LEFT HAND SIDE				REGTERKANT/RIGHT HAND SIDE				
	Y	X	WG	29°	Y	X		
L205	-72 834.62	2 601 614.15		R205	-72 215.15	2 602 804.69		
L206	-72 922.34	2 601 457.50		R206	-72 302.66	2 602 647.76		
L207	-72 958.37	2 601 392.93		R207	-72 323.55	2 602 610.78		
L208	-73 010.11	2 601 300.13		R208	-72 400.96	2 602 471.99		
L209	-73 097.97	2 601 143.26		R209	-72 469.23	2 602 349.95		
L210	-73 135.95	2 601 075.13		R210	-72 556.77	2 602 198.66		
L211	-73 175.92	2 600 999.99		R211	-72 660.64	2 602 013.17		
L212	-73 212.08	2 600 924.21		R212	-72 812.68	2 601 740.86		
L213	-73 290.92	2 600 749.76		R213	-72 962.14	2 601 473.69		
L214	-73 356.23	2 600 604.86		R214	-72 997.94	2 601 409.31		
L215	-73 399.60	2 600 508.95		R215	-73 112.41	2 601 204.45		
L216	-73 425.02	2 600 452.20		R216	-73 206.95	2 601 034.24		
L217	-73 421.58	2 600 447.70		R217	-73 333.30	2 600 754.38		
L218	-73 434.11	2 600 423.15		R218	-73 447.99	2 600 508.96		
L219	-73 438.42	2 600 422.90		R219	-73 477.29	2 600 471.19		
L220	-73 449.61	2 600 397.77		R220	-73 502.05	2 600 415.14		
L221	-73 465.76	2 600 362.49		R221	-73 505.44	2 600 407.99		
L222	-73 522.66	2 600 237.05		R222	-73 509.62	2 600 362.38		
L223	-73 553.35	2 600 168.69		R223	-73 564.98	2 600 239.80		
L224	-73 585.03	2 600 098.78		R224	-73 627.53	2 600 101.00		
L225	-73 608.26	2 600 045.85		R225	-73 670.72	2 599 998.30		
L226	-73 630.77	2 599 990.76		R226	-73 714.98	2 599 878.00		
L227	-73 652.97	2 599 932.19		R227	-73 796.05	2 599 652.56		
L228	-73 712.95	2 599 765.72		R228	-73 870.18	2 599 446.55		
L229	-73 733.11	2 599 709.63		R229	-73 899.61	2 599 409.32		
L230	-73 753.43	2 599 653.00		R230	-73 907.98	2 599 385.78		
L231	-73 779.02	2 599 582.40		R231	-73 909.01	2 599 338.45		
L232	-73 794.26	2 599 539.93		R232	-73 967.07	2 599 177.03		
L233	-73 830.22	2 599 440.02		R233	-74 058.44	2 598 923.11		
L234	-73 832.76	2 599 432.96		R234	-74 152.55	2 598 661.99		
L235	-73 831.92	2 599 385.40		R235	-74 241.52	2 598 415.30		
L236	-73 843.63	2 599 380.01		R236	-74 391.01	2 598 003.71		
L237	-73 846.18	2 599 371.92		R237	-74 441.00	2 597 865.30		
L238	-73 842.15	2 599 362.18		R238	-74 576.54	2 597 489.19		
L239	-73 871.63	2 599 324.69		R239	-74 607.88	2 597 447.07		
L240	-73 932.22	2 599 156.68		R240	-74 655.21	2 597 443.96		
L241	-74 026.37	2 598 895.00		R241	-74 693.91	2 597 454.09		
L242	-74 143.11	2 598 570.83		R242	-74 701.50	2 597 425.07		
L243	-74 264.45	2 598 231.32		R243	-74 667.65	2 597 416.20		
L244	-74 366.16	2 597 948.24		R244	-74 627.91	2 597 390.30		
L245	-74 456.33	2 597 698.35		R245	-74 629.69	2 597 343.63		
L246	-74 522.31	2 597 493.59		R246	-74 652.08	2 597 281.13		
L247	-74 528.07	2 597 439.87		R247	-74 762.60	2 596 975.41		
L248	-74 480.82	2 597 434.72		R248	-74 816.49	2 596 831.23		
L249	-74 466.11	2 597 437.63		R249	-75 029.36	2 596 262.02		
L250	-74 460.29	2 597 408.20		R250	-75 225.04	2 595 735.32		
L251	-74 512.33	2 597 397.91		R251	-75 312.84	2 595 497.00		
L252	-74 552.55	2 597 371.95		R252	-75 419.93	2 595 208.47		
L253	-74 582.90	2 597 332.00		R253	-75 508.74	2 594 968.91		
L254	-74 602.47	2 597 291.19		R254	-75 554.94	2 594 840.76		
L255	-74 615.38	2 597 257.12		R255	-75 560.86	2 594 832.23		
				Vel	25	Van	31	P604/06
				Sheet		of		

PADRESERWE KOORDINATE				/	ROAD RESERVE CO-ORDINATES			
LINKERKANT/LEFT HAND SIDE				/	REGTERKANT/RIGHT HAND SIDE			
	Y	X	WG	29°		y	X	
L256	-74 668.48	2 597	112.04	R256	-75 595.51	2 594	734.70	
L257	-74 721.65	2 596	966.86	R257	-75 601.99	2 594	717.33	
L258	-74 825.30	2 596	683.65	R258	-75 644.46	2 594	603.54	
L259	-75 034.07	2 596	113.58	R259	-75 693.13	2 594	472.24	
L260	-75 241.26	2 595	548.14	R260	-75 746.26	2 594	328.81	
L261	-75 402.66	2 595	108.13	R261	-75 784.22	2 594	237.28	
L262	-75 478.96	2 594	899.79	R262	-75 829.35	2 594	135.40	
L263	-75 492.13	2 594	851.19	R263	-75 885.71	2 594	022.23	
L264	-75 572.89	2 594	663.07	R264	-75 947.60	2 593	916.73	
L265	-75 591.75	2 594	619.14	R265	-76 042.20	2 593	758.94	
L266	-75 613.89	2 594	572.81	R266	-76 186.97	2 593	503.12	
L267	-75 674.15	2 594	410.31	R267	-76 229.78	2 593	411.29	
L268	-75 723.12	2 594	278.33	R268	-76 321.33	2 593	163.47	
L269	-75 744.50	2 594	220.82	R269	-76 343.46	2 593	056.70	
L270	-75 791.31	2 594	117.45	R270	-76 362.98	2 592	933.20	
L271	-75 848.63	2 594	002.50	R271	-76 384.04	2 592	780.28	
L272	-75 907.99	2 593	897.12	R272	-76 412.36	2 592	615.98	
L273	-75 934.66	2 593	825.54	R273	-76 432.53	2 592	513.01	
L274	-75 897.86	2 593	793.84	R274	-76 456.7J.	2 592	415.59	
L275	-75 865.54	2 593	780.41	R275	-76 483.74	2 592	321.01	
L276	-75 878.20	2 593	749.94	R276	-76 518.64	2 592	216.63	
L277	-75 956.15	2 593	768.45	R277	-76 651.33	2 591	849.35	
L278	-75 964.72	2 593	773.61	R278	-76 671.65	2 591	792.19	
L279	-76 000.76	2 593	742.77	R279	-76 723.46	2 591	662.61	
L280	-76 095.96	2 593	584.46	R280	-76 786.22	2 591	472.04	
L281	-76 148.63	2 593	483.66	R281	-76 818.04	2 591	378.80	
L282	-76 192.08	2 593	387.07	R282	-76 944.62	2 591	020.58	
L283	-76 225.77	2 593	302.63	R283	-77 023.24	2 590	814.61	
L281	-76 248.32	2 593	219.41	R284	-77 120.87	2 590	529.83	
L285	-76 277.07	2 593	059.98	R285	-77 299.23	2 590	034.92	
L286	-76 310.02	2 592	916.04	R286	-77 382.06	2 589	815.81	
L287	-76 306.98	2 592	859.61	R287	-77 439.40	2 589	665.97	
L288	-76 291.82	2 592	861.96	R288	-77 509.46	2 589	458.30	
L289	-76 309.74	2 592	814.38	R289	-77 650.56	2 589	057.00	
L290	-76 321.88	2 592	796.99	R290	-77 811.81	2 588	610.92	
L291	-76 339.66	2 592	774.28	R291	-77 873.31	2 588	440.87	
L292	-76 372.62	2 592	608.84	R292	-78 130.83	2 587	728.44	
L293	-76 394.68	2 592	503.71	R293	-78 298.74	2 587	265.14	
L294	-76 417.90	2 592	405.79	R294	-78 466.28	2 586	799.45	
L295	-76 445.91	2 592	308.96	R295	-78 543.83	2 586	578.23	
L296	-76 463.88	2 592	251.84	R296	-78 617.82	2 586	368.27	
L297	-76 479.12	2 592	202.74	R297	-78 645.88	2 586	287.94	
L298	-76 560.20	2 591	968.89	R298	-78 688.33	2 586	183.43	
L299	-77 409.66	2 589	627.30	R299	-78 739.47	2 586	082.82	
L300	-77 671.93	2 588	904.68	R300	-78 797.74	2 585	986.92	
L301	-77 716.85	2 588	765.14	R301	-78 863.07	2 585	894.83	
L302	-77 766.96	2 588	619.91	R302	-79 046.55	2 585	660.38	
L303	-77 817.56	2 588	479.20	R303	-79 087.68	2 585	636.13	
L304	-77 868.74	2 588	336.37	R304	-79 141.54	2 585	567.32	
L305	-77 963.33	2 588	067.16	R305	-79 255.73	2 585	468.38	
L306	-78 074.45	2 587	783.03	R306	-79 330.86	2 585	372.56	
				\ Vel	26	Van	31	P604/06
				Sheet		of		

PADRESERWE KOORDINATE				/	ROAD RESERVE CO-ORDINATES			
LINKERKANT/LEFT HAND SIDE					REGTERKANT/RIGHT HAND SIDE			
	y	x	WG	29°	y	x		
L307	-78 253.19	2 587 285.13		R307	-79 523.92	2 585 051.06		
L308	-78 427.58	2 586 798.29		R308	-79 638.81	2 584 904.96		
L309	-78 616.89	2 586 272.73		R309	-79 694.36	2 584 834.14		
L310	-78 660.61	2 586 166.86		R310	-79 911.21	2 584 558.03		
L311	-78 700.27	2 586 087.11		R311	-80 060.99	2 584 397.40		
L312	-78 773.19	2 585 965.15		R312	-80 108.33	2 584 398.20		
L313	-78 815.58	2 585 904.08		R313	-80 254.41	2 584 449.54		
L314	-79 017.11	2 585 645.71		R314	-80 271.16	2 584 416.34		
L315	-79 135.75	2 585 448.64		R315	-80 106.52	2 584 342.90		
L316	-79 127.99	2 585 388.23		R316	-80 123.38	2 584 298.39		
L317	-79 211.32	2 585 282.24		R317	-80 139.50	2 584 277.81		
L318	-79 269.81	2 585 277.52		R318	-80 236.45	2 584 153.86		
L319	-79 380.55	2 585 183.15		R319	-80 458.58	2 583 868.80		
L320	-79 598.29	2 584 903.97		R320	-80 788.90	2 583 448.93		
L321	-79 653.84	2 584 833.15		R321	-81 088.49	2 583 066.22		
L322	-79 872.47	2 584 555.51		R322	-81 283.67	2 582 816.07		
L323	-79 945.25	2 584 456.73		R323	-81 446.72	2 582 605.91		
L324	-79 976.50	2 584 411.90		R324	-81 607.23	2 582 399.31		
L325	-79 994.48	2 584 365.97		R325	-81 827.19	2 582 117.22		
L326	-79 960.52	2 584 332.88		R326	-81 906.62	2 582 015.12		
L327	-79 901.84	2 584 305.50		R327	-81 966.44	2 581 907.37		
L328	-79 852.94	2 584 289.00		R328	-82 019.54	2 581 808.31		
L329	-79 805.23	2 584 281.52		R329	-82 063.90	2 581 722.56		
L330	-79 859.11	2 584 259.84		R330	-82 082.76	2 581 685.62		
L331	-79 919.20	2 584 280.25		R331	-82 125.17	2 581 571.47		
L332	-79 986.75	2 584 312.18		R332	-82 147.78	2 581 496.09		
L333	-80 033.91	2 584 317.53		R333	-82 177.91	2 581 395.81		
L334	-80 071.95	2 584 290.09		R334	-82 179.21	2 581 381.10		
L335	-80 081.56	2 584 278.08		R335	-82 196.59	2 581 298.67		
L336	-80 102.07	2 584 252.73		R336	-82 208.71	2 581 221.82		
L337	-80 488.87	2 583 759.55		R337	-82 214.92	2 581 180.91		
L338	-80 673.76	2 583 523.96		R338	-82 216.50	2 581 136.06		
L339	-80 777.84	2 583 391.48		R339	-82 222.55	2 581 004.38		
L340	-81 056.27	2 583 036.38		R340	-82 236.08	2 580 784.56		
L341	-81 284.41	2 582 745.41		R341	-82 249.94	2 580 586.85		
L342	-81 747.50	2 582 154.89		R342	-82 267.14	2 580 360.66		
L343	-81 898.76	2 581 958.66		R343	-82 276.86	2 580 258.21		
L344	-81 974.21	2 581 831.12		R344	-82 287.65	2 580 145.75		
L345	-82 006.35	2 581 756.73		R345	-82 304.45	2 580 101.07		
L346	-82 012.13	2 581 709.95		R346	-82 368.85	2 580 077.57		
L347	-81 986.59	2 581 670.36		R347	-82 364.68	2 580 064.09		
L348	-81 995.93	2 581 637.72		R348	-82 304.49	2 580 075.30		
L349	-82 038.54	2 581 652.10		R349	-82 295.08	2 580 028.39		
L350	-82 067.71	2 581 614.16		R350	-82 312.20	2 579 780.52		
L351	-82 132.29	2 581 376.34		R351	-82 344.42	2 579 541.70		
L352	-82 139.79	2 581 348.61		R352	-82 391.11	2 579 345.69		
L353	-82 153.95	2 581 250.89		R353	-82 452.30	2 579 154.00		
L354	-82 163.27	2 581 157.74		R354	-82 540.68	2 578 944.09		
L355	-82 170.11	2 581 100.34		R355	-82 598.51	2 578 838.04		
L356	-82 174.39	2 581 065.63		R356	-82 636.05	2 578 769.19		
L357	-82 196.66	2 580 840.21		R357	-82 683.91	2 578 695.30		
					Vel 27	Van 31	P604/06	
					Sheet	of		

PADRESERWE KOORDINATE				/	ROAD RESERVE CO-ORDINATES			
LINKERKANT/LEFT HAND SIDE					REGTERKANT/RIGHT HAND SIDE			
	Y	X	WG	29°	Y	X		
L358	-82 210.54	2 580	688.02	R358	-82 778.29	2 578	538.18	
L359	-82 223.49	2 580	530.69	R359	-82 856.99	2 578	415.23	
L360	-82 231.63	2 580	398.96	R360	-83 007.88	2 578	177.77	
L361	-82 235.77	2 580	314.44	R361	-83 165.78	2 577	928.46	
L362	-82 238.69	2 580	259.33	R362	-83 407.79	2 577	546.94	
L363	-82 242.72	2 580	169.18	R363	-83 663.41	2 577	143.80	
L364	-82 231.49	2 580	122.11	R364	-83 858.84	2 576	835.65	
L365	-82 184.67	2 580	131.32	R365	-83 893.32	2 576	780.99	
L366	-82 139.30	2 580	128.35	R366	-84 081.37	2 576	484.81	
L367	-82 234.64	2 580	095.38	R367	-84 186.32	2 576	319.51	
L368	-82 255.07	2 580	049.44	R368	-84 221.50	2 576	271.55	
L369	-82 263.23	2 579	999.04	R369	-84 236.42	2 576	248.14	
L370	-82 267.90	2 579	937.89	R370	-84 277.16	2 576	183.86	
L371	-82 274.92	2 579	805.28	R371	-84 314.26	2 576	117.67	
L372	-82 282.66	2 579	715.38	R372	-84 378.84	2 576	015.97	
L373	-82 294.35	2 579	626.02	R373	-84 427.97	2 575	946.32	
L374	-82 309.00	2 579	541.11	R374	-84 478.50	2 575	866.29	
L375	-82 357.37	2 579	345.26	R375	-84 518.18	2 575	796.33	
L376	-82 399.14	2 579	211.33	R376	-84 624.69	2 575	628.42	
L377	-82 462.10	2 579	043.60	R377	-84 693.07	2 575	528.97	
L378	-82 508.67	2 578	938.49	R378	-84 749.23	2 575	432.97	
L379	-82 563.60	2 578	836.45	R379	-84 783.34	2 575	379.49	
L380	-82 605.68	2 578	761.98	R380	-84 878.95	2 575	229.24	
L381	-82 621.70	2 578	733.36	R381	-84 969.80	2 575	086.40	
L382	-82 658.58	2 578	667.52	R382	-84 989.95	2 575	049.98	
L383	-82 841.13	2 578	379.50	R383	-85 252.17	2 574	580.39	
L384	-83 020.08	2 578	097.60	R384	-85 483.37	2 574	157.97	
L385	-83 237.19	2 577	755.32	R385	-85 536.89	2 574	063.57	
L386	-83 392.61	2 577	510.43	R386	-85 570.05	2 574	030.08	
L387	-83 635.13	2 577	128.34	R387	-85 714.24	2 574	084.98	
L388	-83 831.71	2 576	818.08	R388	-85 729.91	2 574	048.40	
L389	-83 869.56	2 576	758.82	R389	-85 605.68	2 573	970.43	
L390	-84 092.13	2 576	408.26	R390	-85 614.77	2 573	923.88	
L391	-84 105.51	2 576	387.26	R391	-85 734.15	2 573	710.83	
L392	-84 154.16	2 576	304.58	R392	-85 959.59	2 573	306.68	
L393	-84 750.74	2 575	364.37	R393	-86 138.75	2 572	991.15	
L394	-84 937.96	2 575	063.87	R394	-86 286.85	2 572	726.28	
L395	-85 113.62	2 574	754.72	R395	-86 402.08	2 572	519.82	
L396	-85 225.70	2 574	542.19	R396	-86 490.04	2 572	362.47	
L397	-85 266.35	2 574	473.41	R397	-86 647.25	2 572	081.77	
L398	-85 410.58	2 574	215.36	R398	-86 740.91	2 571	911.22	
L399	-85 439.51	2 574	162.92	R399	-86 867.79	2 571	680.20	
L400	-85 583.81	2 573	909.83	R400	-86 900.39	2 571	622.06	
L401	-85 660.36	2 573	776.90	R401	-87 098.93	2 571	270.85	
L402	-85 740.30	2 573	633.18	R402	-87 225.47	2 571	050.66	
L403	-85 923.98	2 573	304.40	R403	-87 346.28	2 570	847.71	
L404	-86 099.33	2 572	990.65	R404	-87 416.49	2 570	703.36	
L405	-86 249.84	2 572	708.91	R405	-87 472.92	2 570	598.25	
L406	-86 323.22	2 572	589.98	R406	-87 732.80	2 570	128.85	
L407	-86 458.76	2 572	344.91	R407	-88 009.46	2 569	632.34	
L408	-86 496.71	2 572	274.27	R408	-88 068.43	2 569	508.94	
				Vel	28	Van	31	P604/06
				Sheet		of		

PADRESERWE KOORDINATE				/	ROAD RESERVE CO-ORDINATES			
LINKERKANT/LEFT HAND SIDE					REGTERKANT/RIGHT HAND SIDE			
	Y	X	WG	29°	Y	X		
L409	-86 547.25	2 572	188.05	R409	-88 116.50	2 569	398.34	
L410	-86 651.72	2 572	001.26	R410	-88 160.82	2 569	286.00	
L411	-86 760.31	2 571	807.53	R411	-88 171.73	2 569	252.87	
L412	-86 822.32	2 571	695.72	R412	-88 363.64	2 568	645.10	
L413	-87 035.14	2 571	315.23	R413	-88 466.89	2 568	319.27	
L414	-87 191.21	2 571	035.77	R414	-88 584.64	2 567	946.59	
L415	-87 312.98	2 570	811.74	R415	-88 693.75	2 567	601.32	
L416	-87 387.06	2 570	687.00	R416	-88 734.84	2 567	470.59	
L417	-87 511.17	2 570	465.25	R417	-88 799.38	2 567	267.79	
L418	-87 562.56	2 570	373.19	R418	-88 825.18	2 567	187.54	
L419	-87 673.02	2 570	174.65	R419	-88 960.64	2 566	753.68	
L420	-87 844.78	2 569	865.91	R420	-89 055.03	2 566	453.24	
L421	-87 932.68	2 569	707.51	R421	-89 130.26	2 566	213.74	
L422	-88 021.63	2 569	536.03	R422	-89 150.63	2 566	147.91	
L423	-88 080.13	2 569	405.29	R423	-89 172.42	2 566	091.68	
L424	-88 134.07	2 569	267.28	R424	-89 237.07	2 565	886.78	
L425	-88 243.89	2 568	930.50	R425	-89 249.64	2 565	833.71	
L426	-88 342.25	2 568	617.73	R426	-89 296.68	2 565	685.37	
L427	-88 438.84	2 568	310.41	R427	-89 326.65	2 565	591.31	
L428	-88 474.41	2 568	203.29	R428	-89 442.65	2 565	220.88	
L429	-88 557.87	2 567	931.48	R429	-89 508.84	2 565	010.21	
L430	-88 578.56	2 567	865.21	R430	-89 676.43	2 564	475.64	
L431	-88 638.33	2 567	673.99	R431	-89 678.44	2 564	470.34	
L432	-88 666.43	2 567	584.58	R432	-89 735.15	2 564	289.48	
L433	-88 724.35	2 567	399.26	R433	-89 896.89	2 563	772.73	
L434	-88 873.35	2 566	926.14	R434	-89 933.83	2 563	657.02	
L435	-89 021.96	2 566	451.76	R435	-90 025.05	2 563	371.36	
L436	-89 091.73	2 566	231.63	R436	-90 085.70	2 563	177.53	
L437	-89 121.18	2 566	138.13	R437	-90 112.75	2 563	090.74	
L438	-89 134.36	2 566	080.04	R438	-90 183.59	2 562	862.16	
L439	-89 133.71	2 566	030.45	R439	-90 268.23	2 562	592.73	
L440	-89 028.27	2 566	011.48	R440	-90 347.23	2 562	342.30	
L441	-89 029.45	2 565	981.80	R441	-90 422.96	2 562	100.51	
L442	-89 157.53	2 565	971.36	R442	-90 498.17	2 561	861.57	
L443	-89 178.30	2 565	939.46	R443	-90 537.72	2 561	736.17	
L444	-89 285.03	2 565	600.30	R444	-90 587.59	2 561	576.64	
L445	-89 379.48	2 565	314.12	R445	-90 637.10	2 561	423.59	
L446	-89 410.19	2 565	206.89	R446	-90 662.57	2 561	341.75	
L447	-89 480.38	2 564	993.89	R447	-90 666.26	2 561	327.63	
L448	-89 505.86	2 564	901.64	R448	-90 729.63	2 561	128.00	
L449	-89 555.31	2 564	744.03	R449	-90 808.31	2 560	876.13	
L450	-89 604.53	2 564	587.74	R450	-90 825.47	2 560	821.56	
L451	-89 645.43	2 564	457.30	R451	-90 919.70	2 560	520.35	
L452	-89 796.12	2 563	974.44	R452	-90 980.04	2 560	330.54	
L453	-89 898.84	2 563	648.07	R453	-91 026.73	2 560	181.57	
L454	-89 915.70	2 563	595.37	R454	-91 169.22	2 559	729.59	
L455	-89 949.30	2 563	488.20	R455	-91 316.05	2 559	261.68	
L456	-90 050.11	2 563	167.68	R456	-91 451.03	2 558	832.12	
L457	-90 130.69	2 562	922.03	R457	-91 520.23	2 558	610.58	
L458	-90 632.08	2 561	330.07	R458	-91 597.20	2 558	367.69	
L459	-90 774.33	2 560	872.81	R459	-91 619.90	2 558	347.26	

PADRESERWE KOORDINATE					/ ROAD RESERVE CO-ORDINATES						
LINKERKANT/LEFT HAND SIDE					REGTERKANT/RIGHT HAND SIDE						
	Y	X	WG	29°		Y	X				
L460	-90	886.83	2	560	511.16	R460	-91	624.55	2	558	332.55
L461	-90	987.59	2	560	187.21	R461	-91	627.09	2	558	323.41
L462	-91	108.58	2	559	807.11	R462	-91	632.67	2	558	303.32
L463	-91	167.55	2	559	625.86	R463	-91	632.57	2	558	254.05
L464	-91	208.65	2	559	495.17	R464	-91	648.61	2	558	202.27
L465	-91	251.74	2	559	357.57	R465	-91	702.26	2	558	033.83
L466	-91	313.87	2	559	161.19	R466	-91	784.57	2	557	772.06
L467	-91	467.20	2	558	673.37	R467	-91	835.52	2	557	610.00
L468	-91	517.16	2	558	501.67	R468	-91	929.47	2	557	310.16
L469	-91	528.50	2	558	465.07	R469	-91	938.93	2	557	280.21
L470	-91	577.17	2	558	309.08	R470	-91	988.19	2	557	123.00
L471	-91	603.55	2	558	226.44	R471	-92	032.14	2	556	983.53
L472	-91	649.04	2	558	096.63	R472	-92	151.45	2	556	603.06
L473	-91	706.93	2	557	911.74	R473	-92	208.05	2	556	423.68
L474	-91	804.63	2	557	601.22	R474	-92	267.41	2	556	233.90
L475	-91	898.83	2	557	302.51	R475	-92	291.52	2	556	157.46
L476	-91	998.77	2	556	985.58	R476	-92	425.84	2	555	727.82
L477	-92	071.31	2	556	737.22	R477	-92	496.51	2	555	503.58
L478	-92	139.81	2	556	520.02	R478	-92	585.84	2	555	218.72
L479	-92	191.64	2	556	354.51	R479	-92	607.83	2	555	151.64
L480	-92	278.00	2	556	080.84	R480	-92	652.73	2	555	009.76
L481	-92	351.65	2	555	845.77	R481	-92	677.23	2	554	932.31
L482	-92	414.50	2	555	644.84	R482	-92	701.63	2	554	855.14
L483	-92	496.13	2	555	401.23	R483	-92	736.01	2	554	746.29
L484	-92	491.60	2	555	400.21	R484	-92	877.07	2	554	300.17
L485	-92	532.55	2	555	288.20	R485	-92	981.83	2	553	966.34
L486	-92	576.69	2	555	144.66	R486	-93	103.42	2	553	580.03
L487	-92	620.68	2	555	005.35	R487	-93	130.23	2	553	539.08
L488	-92	645.68	2	554	925.81	R488	-93	151.05	2	553	472.62
L489	-92	670.35	2	554	847.09	R489	-93	151.59	2	553	425.72
L490	-92	704.26	2	554	739.31	R490	-93	204.71	2	553	258.06
L491	-92	779.88	2	554	502.17	R491	-93	233.29	2	553	165.31
L492	-92	775.72	2	554	495.70	R492	-93	309.05	2	552	922.84
L493	-92	824.50	2	554	340.61	R493	-93	320.86	2	552	875.56
L494	-92	829.33	2	554	342.08	R494	-93	405.68	2	552	607.55
L495	-92	861.54	2	554	239.39	R495	-93	430.99	2	552	582.47
L496	-92	944.10	2	553	976.76	R496	-93	437.65	2	552	561.79
L497	-92	974.53	2	553	880.12	RIX	-49	969.78	2	636	579.36
L498	-93	047.76	2	553	630.25	RIY	-50	000.59	2	636	523.14
L499	-93	063.74	2	553	572.43						
L500	-93	063.08	2	553	526.97						
L501	-93	016.36	2	553	518.73						
L502	-92	971.07	2	553	525.23						
L503	-92	927.39	2	553	530.67						
L504	-92	887.51	2	553	533.52						
L505	-92	851.75	2	553	532.99						
L506	-92	833.80	2	553	532.72						
L507	-92	834.81	2	553	506.29						
L508	-92	885.72	2	553	503.83						
L509	-92	923.46	2	553	500.67						
L510	-92	961.35	2	553	496.57						

Vel	30	Van	31	P604/06
Sheet		of		

