

CONTENTS**INHOUD**

<i>No.</i>	<i>Page No.</i>	<i>Gazette No.</i>	<i>No.</i>	<i>Bladsy No.</i>	<i>Koerant No.</i>
GOVERNMENT NOTICE			GOEWERMENTSKENNISGEWING		
Transport, Department of			Vervoer, Departement van		
<i>Government Notice</i>			<i>Goewermentskennisgewing</i>		
748		South African National Roads Agency Limited and the National Roads Act (7/1998); The South African National Roads Agency Limited: Declaration amendment 01 National Road N3 Section 7X: Amendment 01 Declaration No. 74 of 1979, 2826 of 1990, 935 of 1989 and 61 of 1983	748		Suid-Afrikaanse Nasionale Padagentskap Beperk en die Nasionale Paaie Wet (7/1998): Die Suid-Afrikaanse Nasionale Padagentskap Beperk: Verklaring wysiging van Nasionale Pad N3 Seksie 7X: Wysiging van Verklaring No. 74 van 1979, 2826 van 1990, 935 van 1989 en 61 van 1983
	3	30197		4	30197

GOVERNMENT NOTICE
GOEWERMENSKENNISGEWING

DEPARTMENT OF TRANSPORT
DEPARTEMENT VAN VERVOER

No. 748

24 August 2007

THE SOUTH AFRICAN NATIONAL ROADS
AGENCY LIMITED

Registration No: 98/09584/06

DECLARATION AMENDMENT OF NATIONAL ROAD N3 SECTION 7X

AMENDMENT OF DECLARATION No. 74 OF 1979, 2826 OF 1990, 935 OF 1989 AND 61 OF 1983

By virtue of section 40 (1)(b) of the South African National Roads Agency Limited and the National Roads Act, 1998 (Act No.7 of 1998), I hereby amend the following declarations by substituting (I) Declaration No. 74 of 1979 (II) Declaration No. 2826 of 1990 (III) Declaration 935 of 1989 and (IV) Declaration 61 of 1983 from the words in the schedule to the declaration "commencing on Subdivision 49 of Dorps Grenden of Harrismith" as depicted on Plan P333/82 sheet 1 up to and including the words "The Willows 1049, Mill River", in the schedule and also as depicted on Plan P333/82 sheet 6 of the deciaranon, with the subjoined sheets 1 to 24 of Plan P582/06.

(National Road N3 Section 7X: Van Reenen – Meul River)


J. Radtke

DIE SUID-AFRIKAANSE NASIONALE PADAGENTSKAPBEPERK

Registrasie No: 98/09584/06

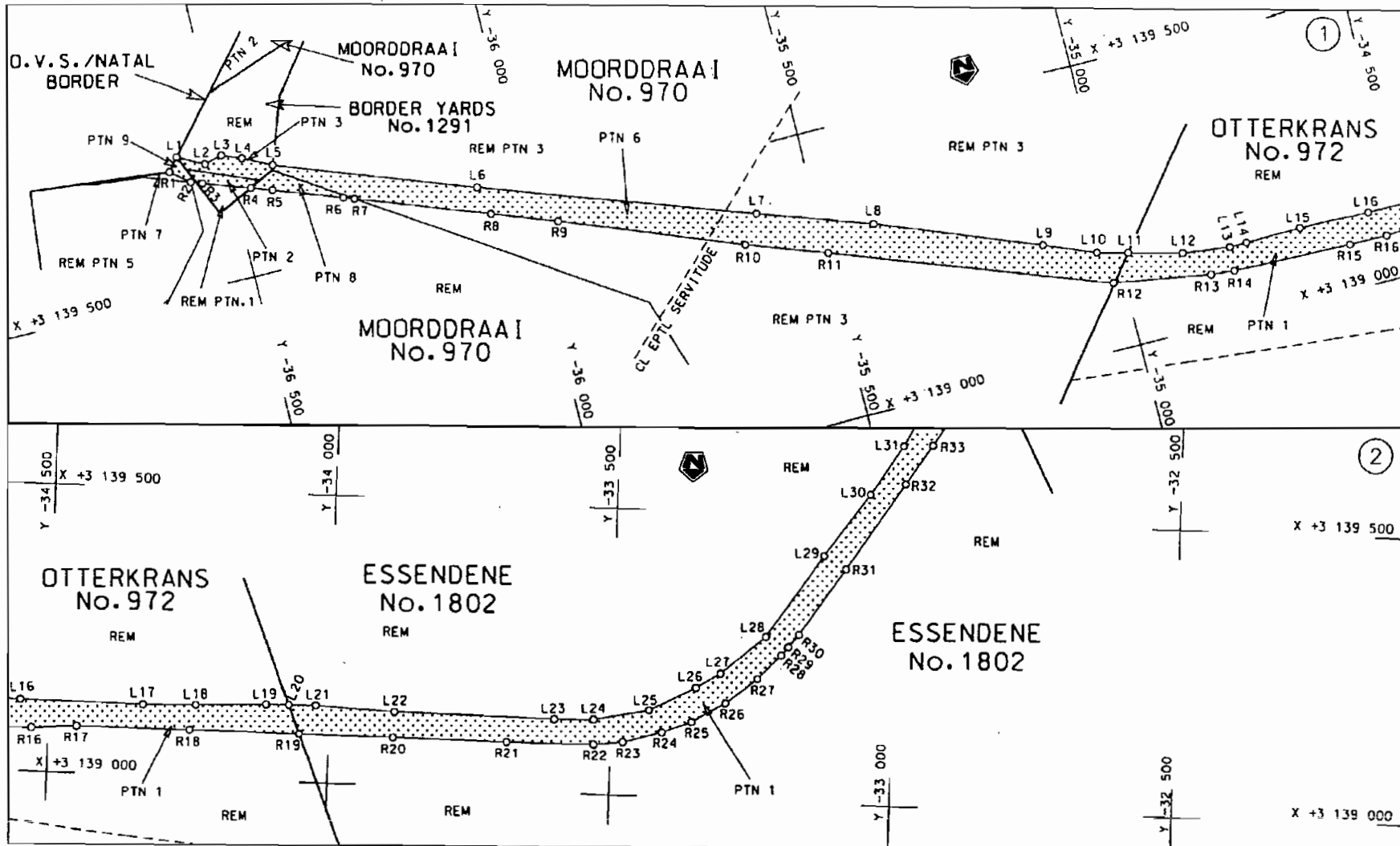
VERKLARING WYSIGING VAN NASIONALE PAD N3 SEKSIE 7X.

WYSIGING VAN VERKLARING NO. 74 VAN 1979, 2826 VAN 1990, 935 VAN 1989 EN 61 VAN 1983

Kragtens Artikel 40(1 IIb) van die Suid Afrikaanse Nasionale Padagentskap Beperk en die Nasionale Paaie Wet, 1998 (Wet No.7 van 1998), wysig ek hiermee die volgende verklarings deur (i) Verklaring No.74 van 1979, (ii) Verklaring 2826 van 1990, (iii) Verklaring No. 935 van 1989, en (iv) Verklaring No. 61 van 1983 vanaf die woorde in die bylae tot die verklaring "wat begin op Onderverdeling 49 van Dorps Gronden van Harrismith" 5005 aangedui op Plan P333/82 vel 1 tot by en insluit die woorde "The Willows 1049; Millrivier" in die bylae en ook 5005 aangedui op Plan P333/82 vel 6 van die verklaring, te vervang met meegaande velie 1 tot 24 van Plan No. P582/06.

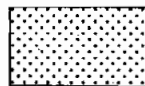
(Nasionale Pad N3 Seksie 7X: Van Reenen - Meulrivier)





Die Suid Afrikaanse Nasionale Padagentskap Beperk
The South African National Roads Agency Limited

Die figuur getoon
The figure shown

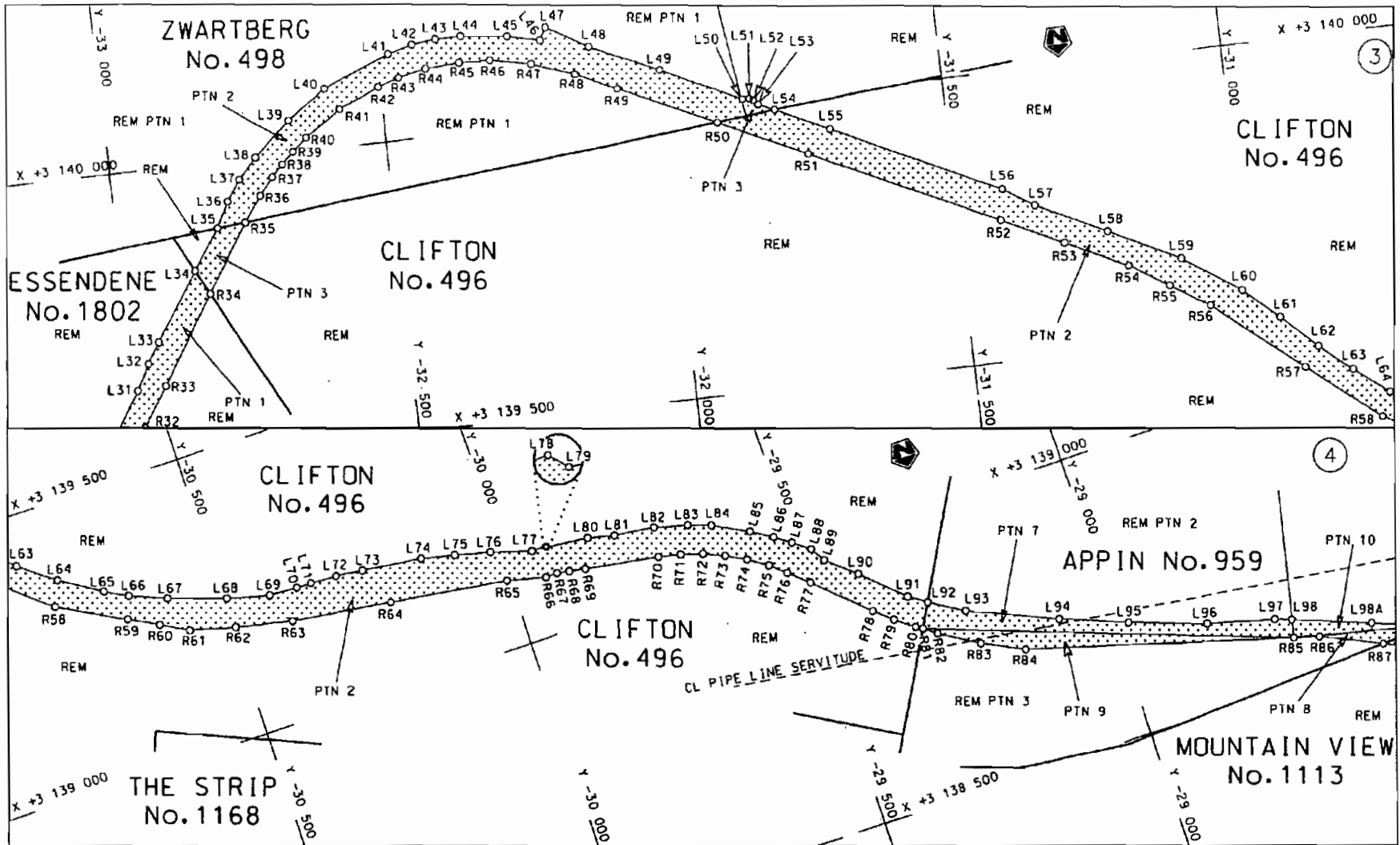


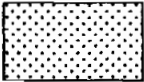
steldie padreserwe voor van 'n gedeelte
represents the road reserve of a portion
van Nasionale Roete N3
of National Route N3

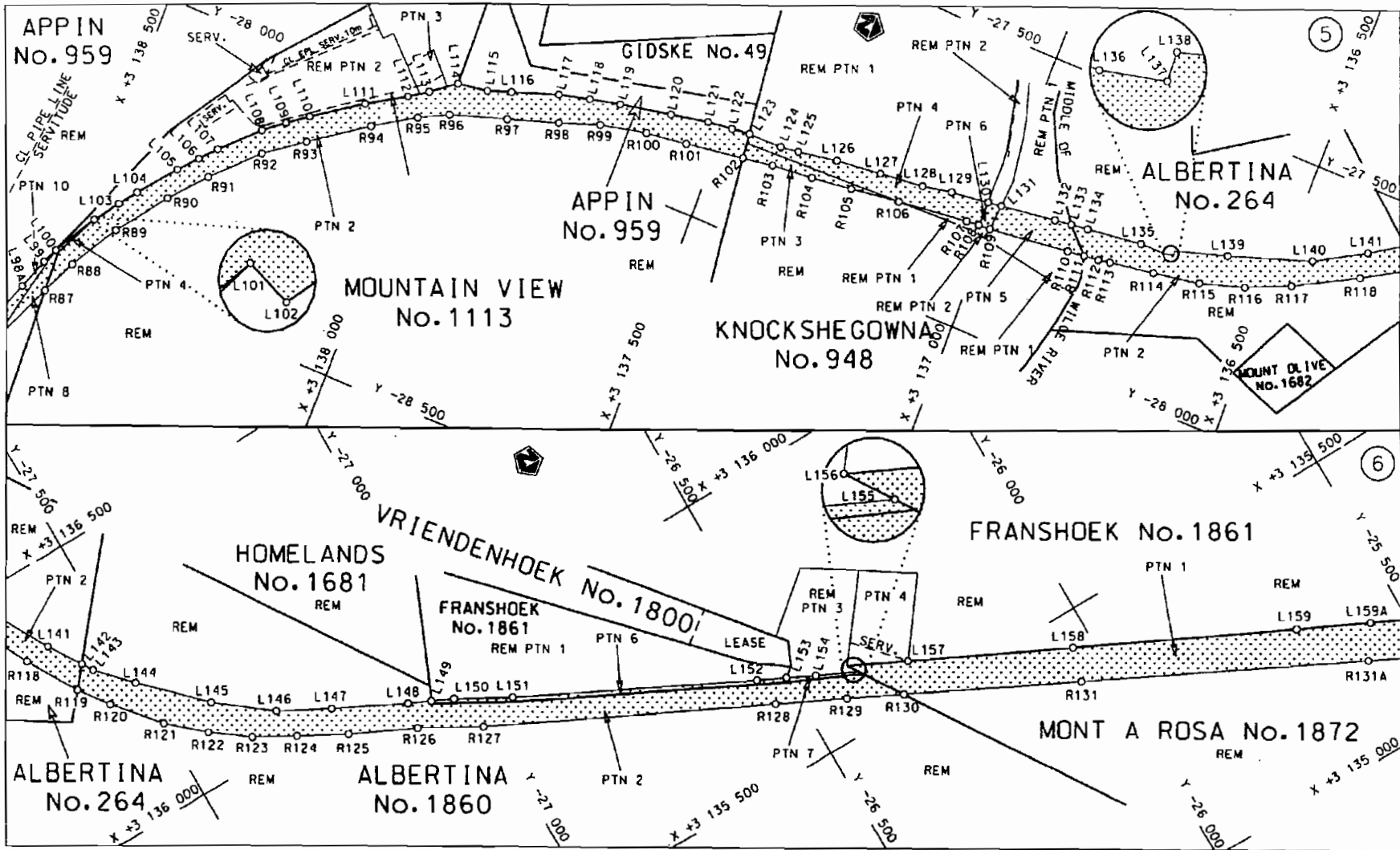
Seksie 7X

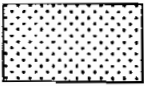
Vel Sheet 1 van of 24
Plan P582/06

D.O.9.A

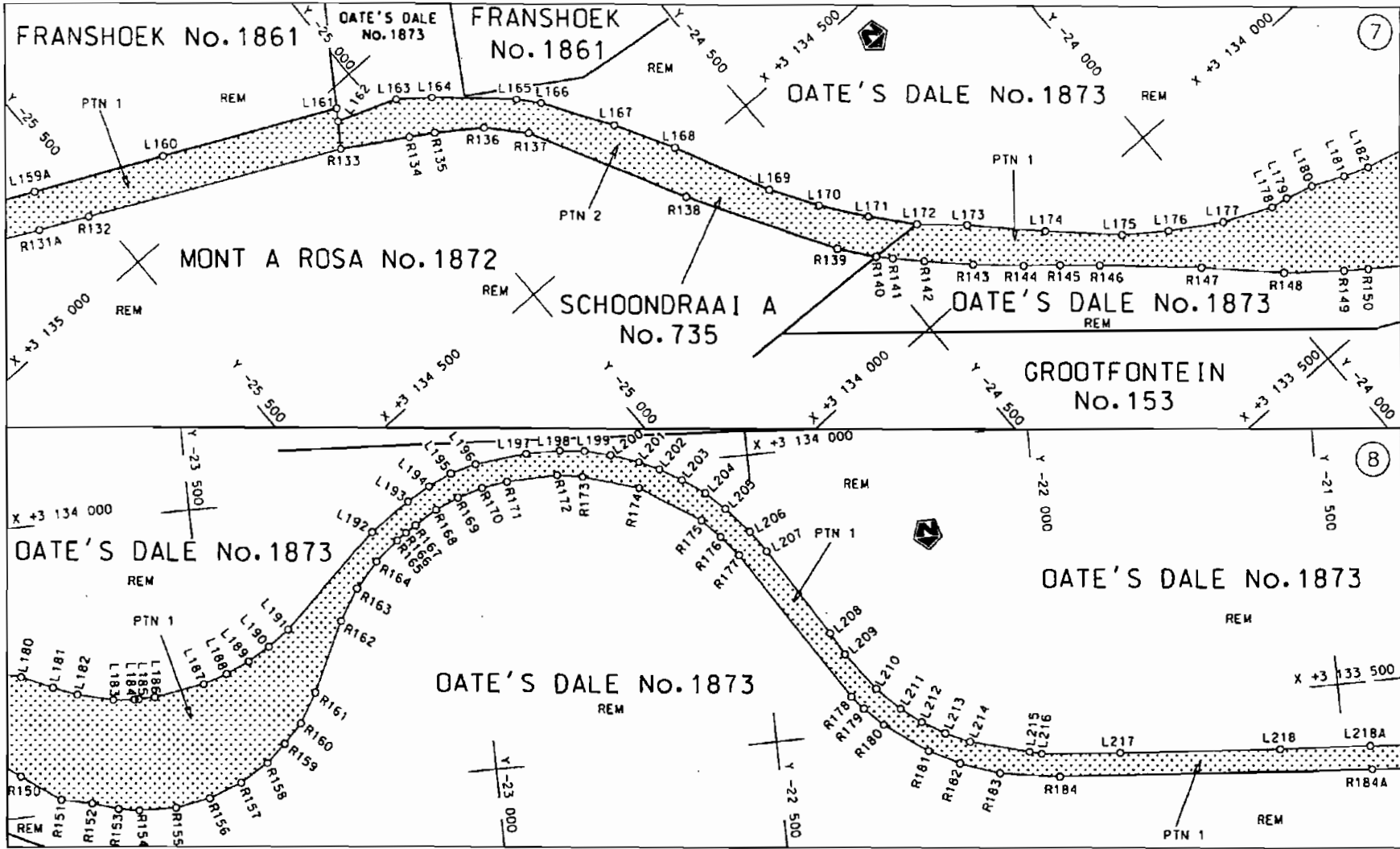


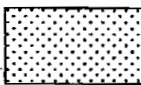
<p>Die Suid Afrikaanse Nasionale Padogentskap Beperk The South African National Roads Agency Limited</p>	<p>Die figuur getoon The figure shown</p> 	<p>steldie podreserwe voor van 'n gedeelte represents the road reserve of a portion van Nasionale Roete N3 of National Route N3</p> <p>Seksie 7X Section</p>	<p>Vel Sheet 2 van 24 of Plan P582/06</p>
--	--	--	---



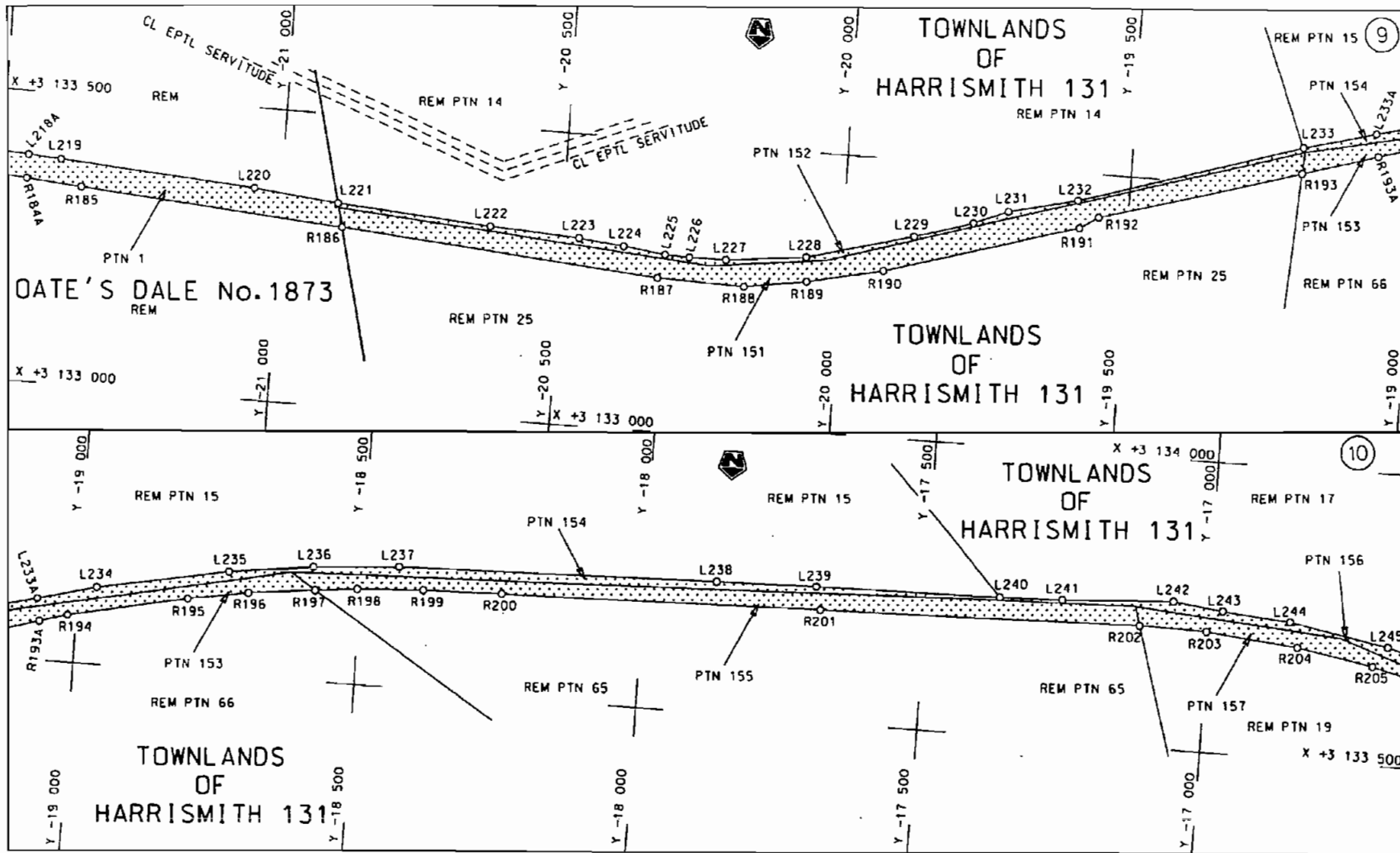
Die Suid Afrikaanse Nasionale Padagentskap Beperk The South African National Roads Agency Limited	Die figuur getoon The figure shown		steldie padreserwe voor van 'n gedeelte represents the road reserve of a portion van Nasionale Roete N3 of National Route N3 Seksie Section 7X	Vel Sheet 3 van of 24 Plan P582/06
--	---------------------------------------	--	--	---------------------------------------

D.O.9.A



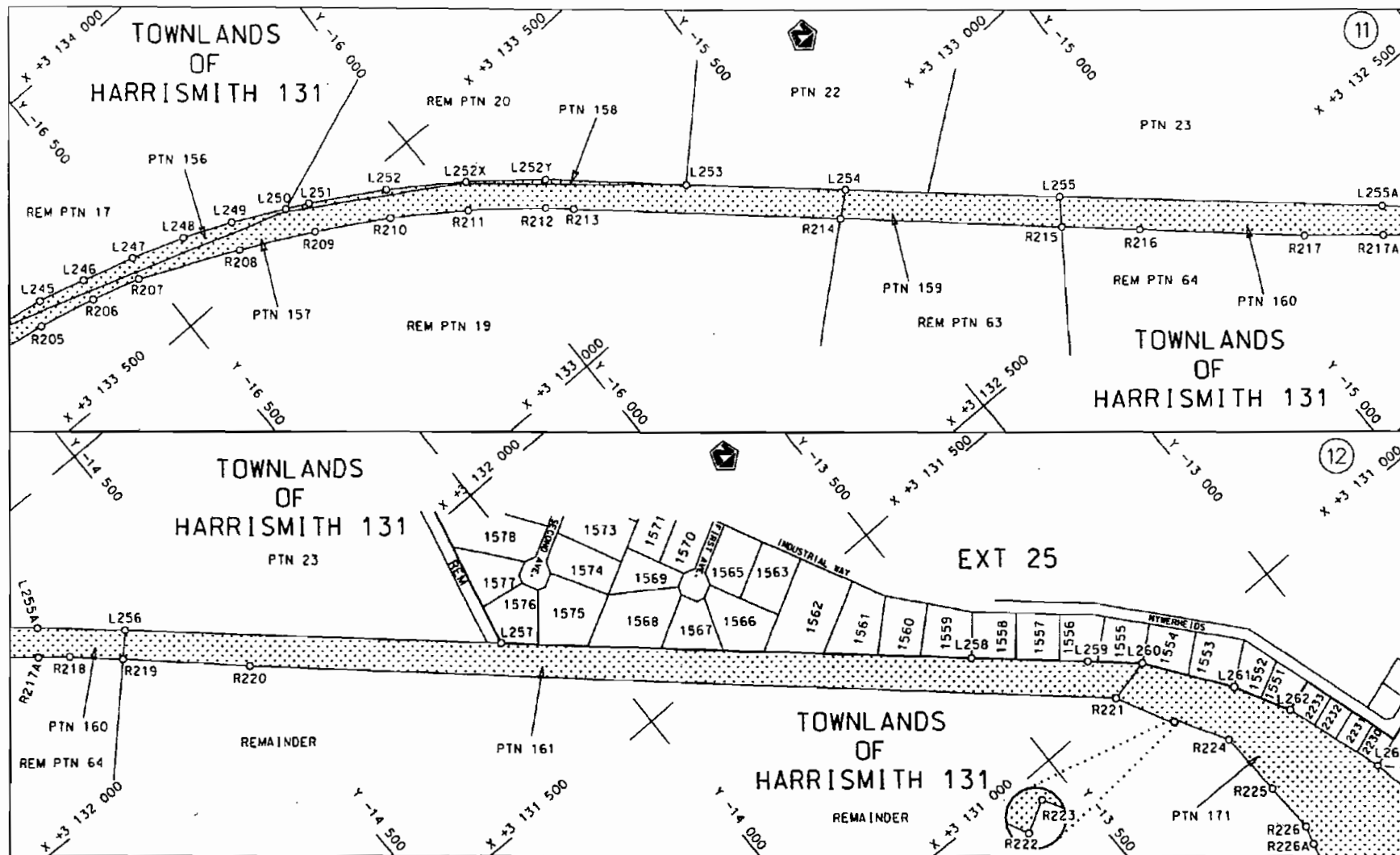
<p>Die Suid Afrikaanse Nasionale Padagentskap Beperk The South African National Roads Agency Limited</p>	<p>Die figuur getoon The figure shown</p> 	<p>steidie padreserwe voor van 'n gedeelte represents the road reserve of a portion van Nasionale Route N3 of National Route N3</p> <p>Seksie Section</p> <p>7X</p>	<p>Vet Sheet</p> <p>4 van of 24</p> <p>Plan P582/06</p>
--	--	---	---

D.O.9.A



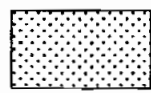
<p>Die Suid Afrikaanse Nasionale Padagentskap Beperk The South African National Roads Agency Limited</p>	<p>Die figuur getoon The figure shown</p>	<p>steldie padreserwe voor van 'n gedeelte represents the road reserve of a portion van Nasionale Roete N3 Seksie 7X of National Route</p>	<p>Vel Sheet 5 van of 24 Plan P582/06</p>
--	---	--	---

D.O.9.A



Die Suid Afrikaanse Nasionale Padogenskop Beperk
The South African National Roads Agency Limited

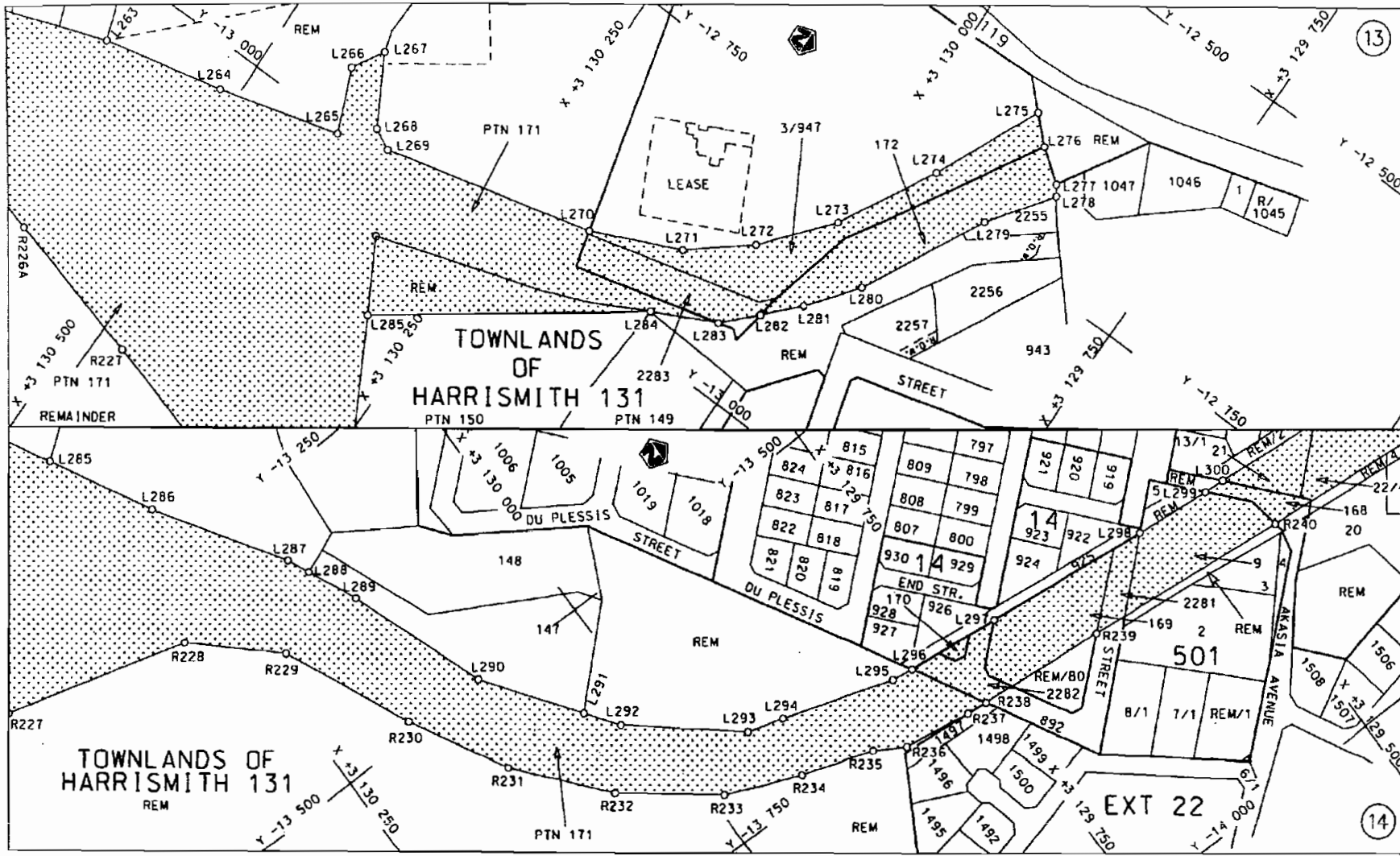
Die figuur getoon
The figure shown



steldie padreserwe voor van 'n gedeelte
represents the road reserve of a portion
van Nasionale Roete
of National Route N3

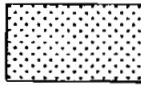
Seksie Section 7X

Vel Sheet 6 van 24
Plan P582/06



Die Suid Afrikaanse Nasionale Padogentskap Beperk
 The South African National Roads Agency Limited

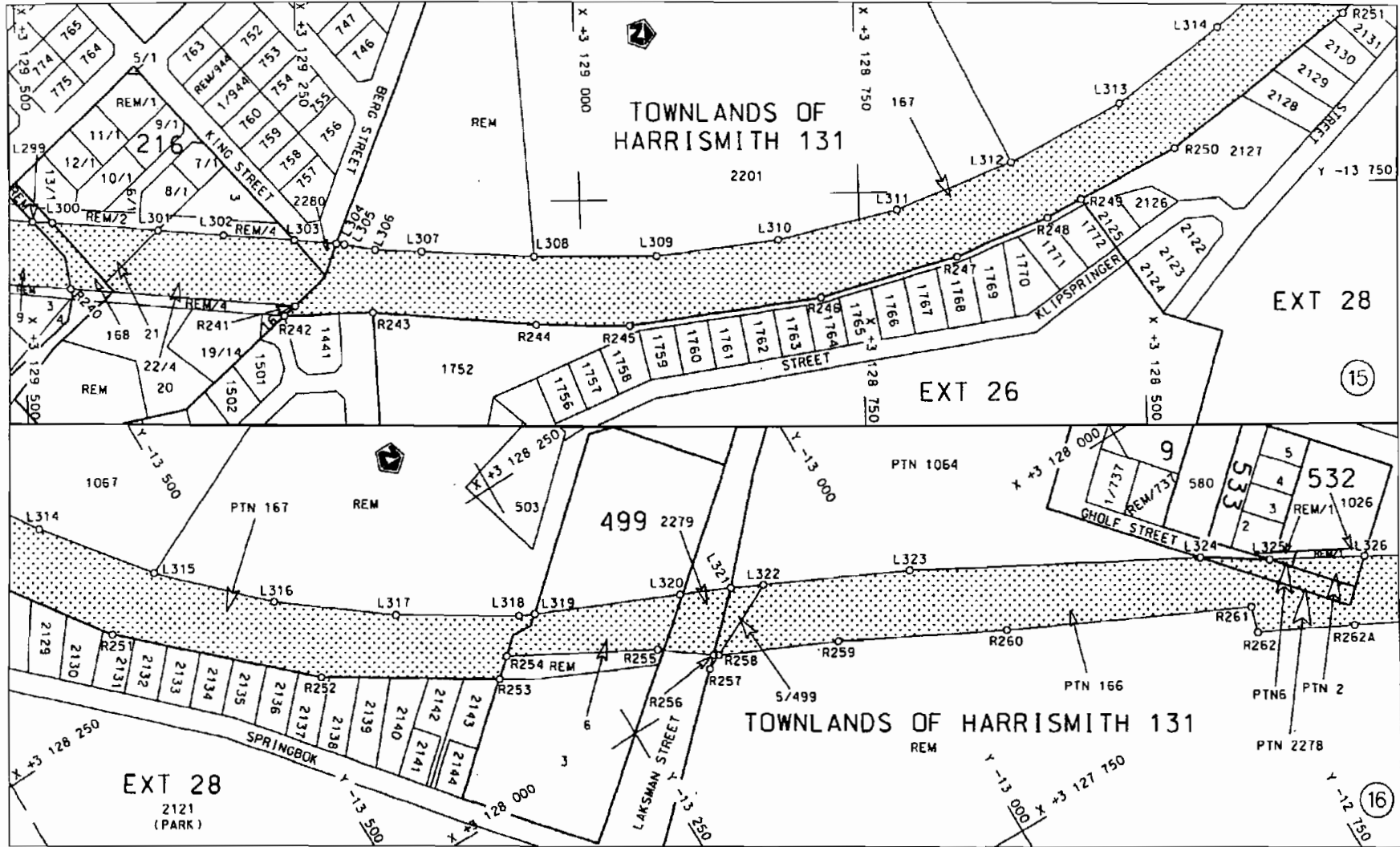
Die figuur getoon
 The figure shown




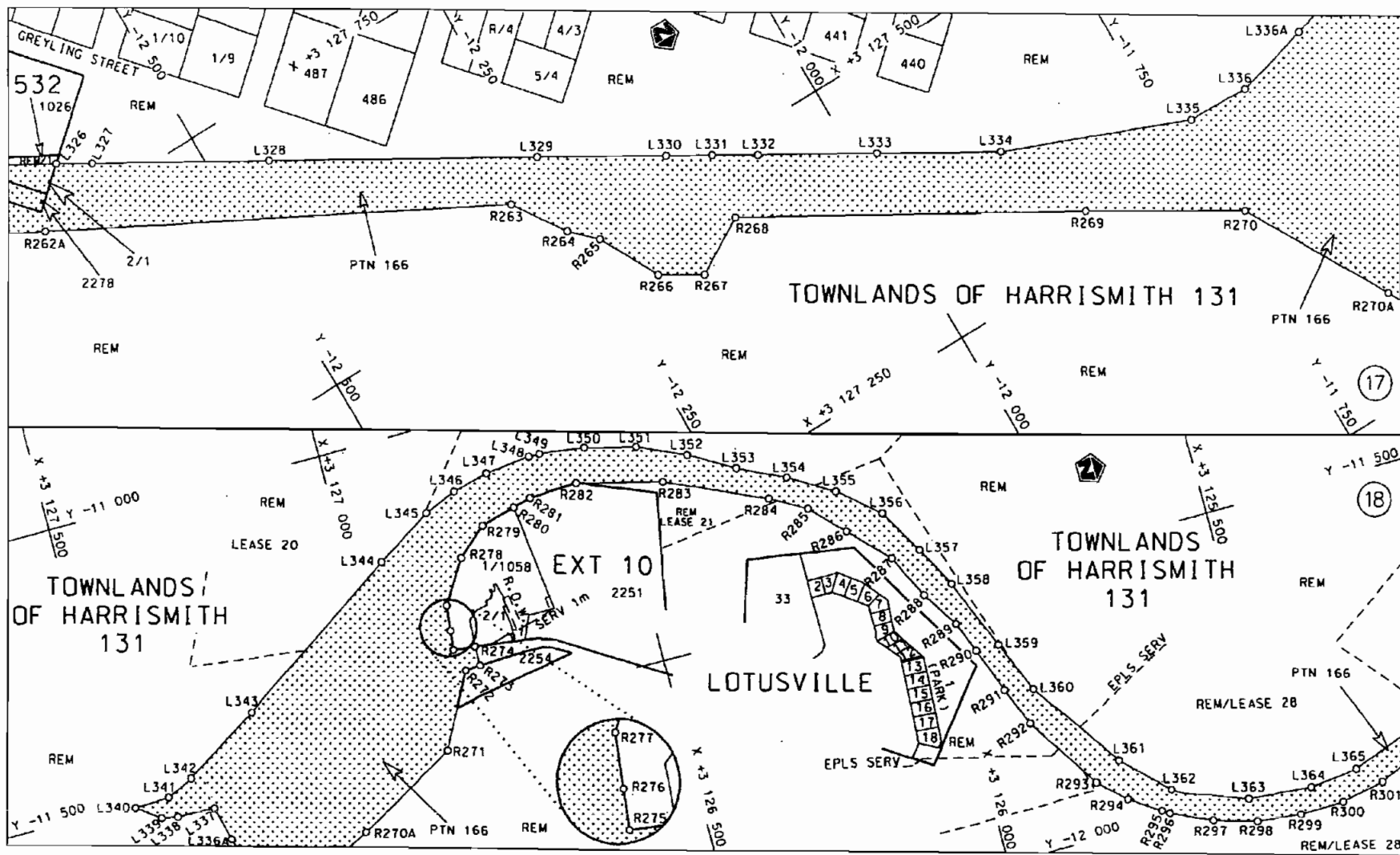
steldie padreserwe voor van 'n gedeelte
 represents the road reserve of a portion
 van Nasionale Roete N3 Seksie 7X
 of National Route

Vel Sheet 7 van 24
 Plan P582/06

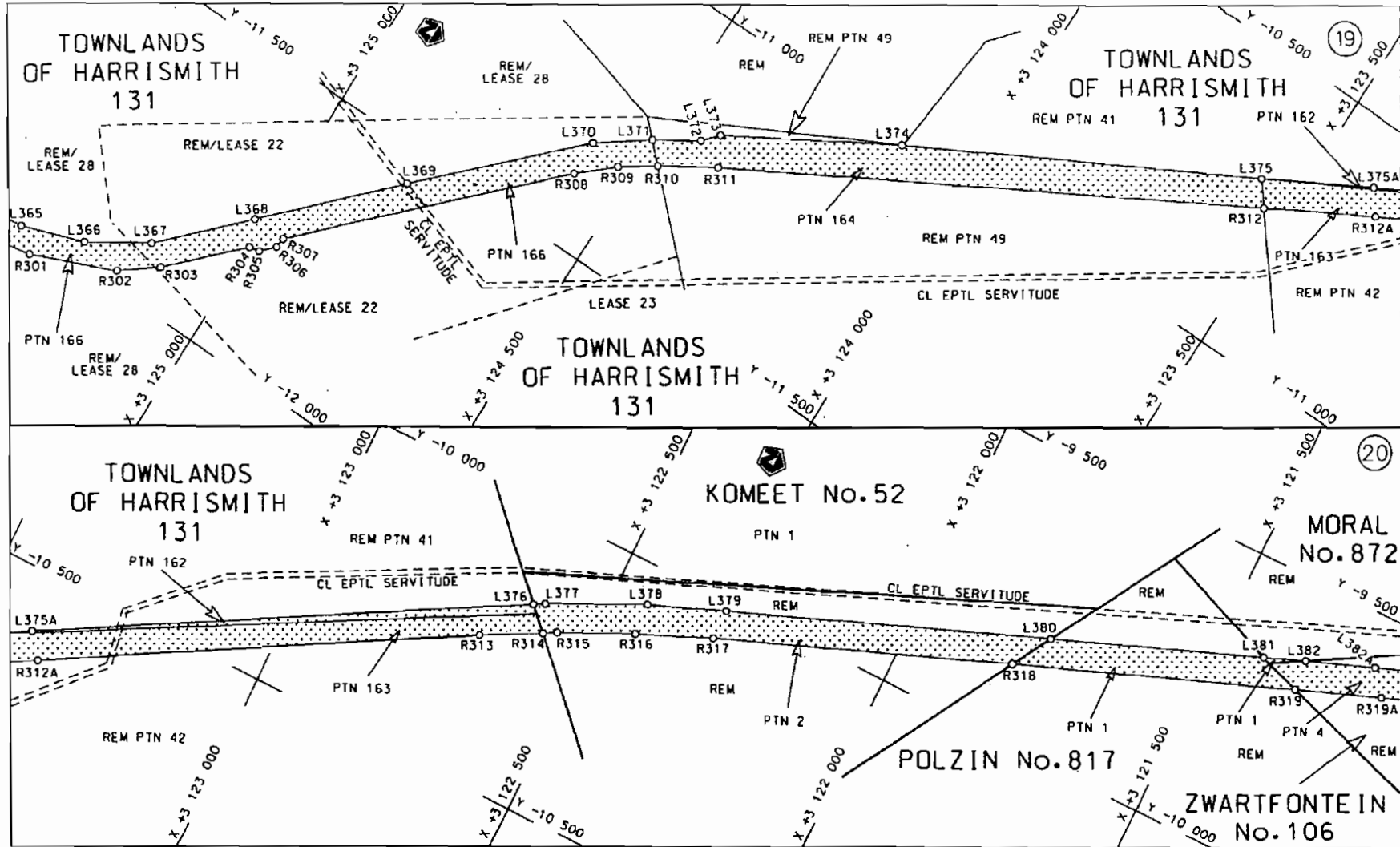
D.O.9.A



<p>Die Suid Afrikaanse Nasionale Padagentskop Beperk</p>	<p>Die figuur getoon</p>		<p>steldie padreserwe voor van 'n gedeelte represents the road reserve of a portion van Nasionale Roete N3 Seksie 7X of National Route N3 Section 7X</p>	<p>Vel Sheet 8 van of 24</p>
<p>The South African National Roads Agency Limited</p>	<p>The figure shown</p>		<p>Plan P582/06</p>	

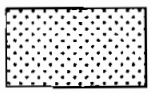


D.O.9.A



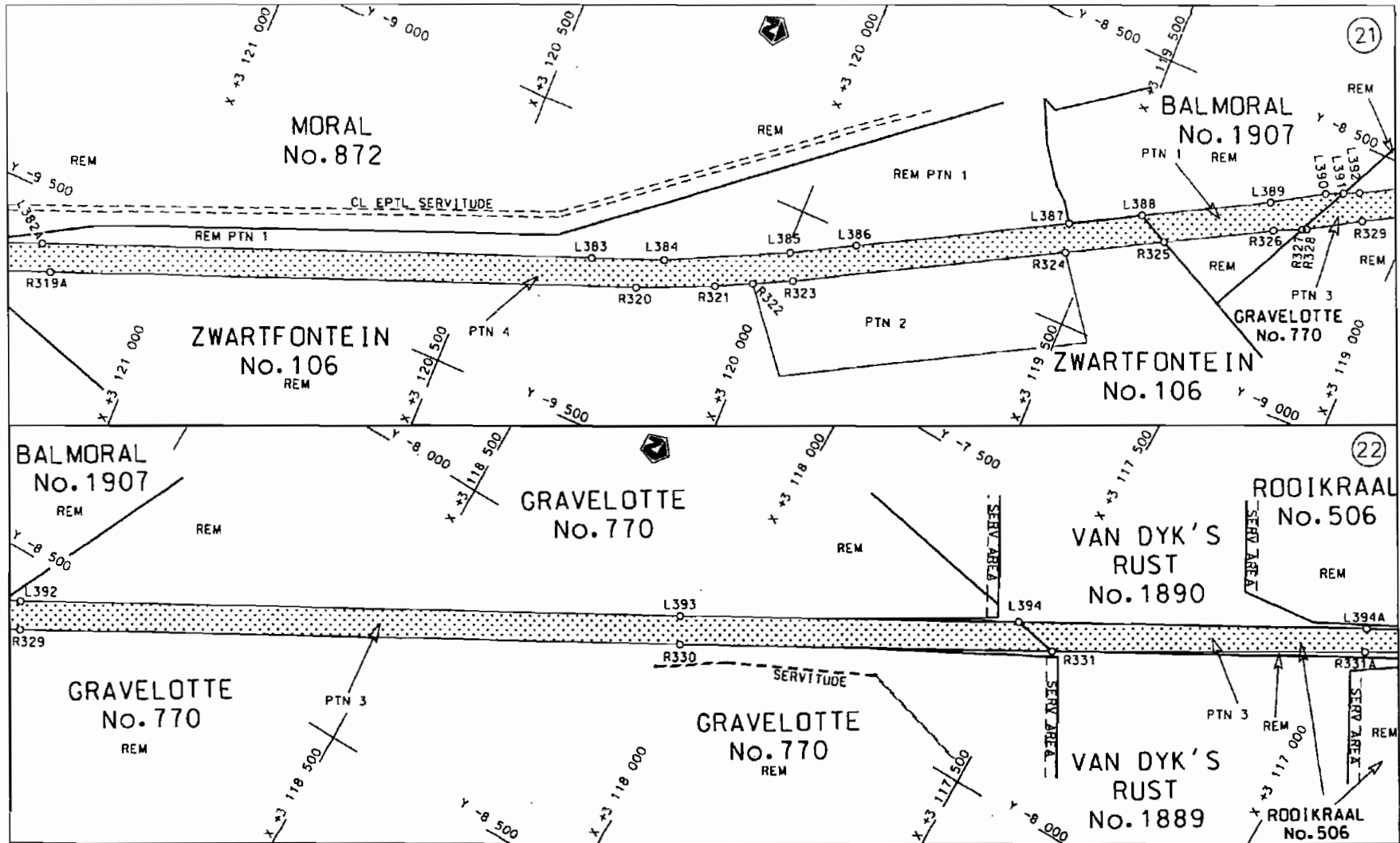
Die Suid Afrikaanse Nasionale Padagentskap Beperk
The South African National Roads Agency Limited

Die figuur getoon
The figure shown



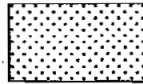
steldie padreserwe voor van 'n gedeelte
represents the road reserve of a portion
van Nasionale Roete N3 Sektie 7X
of National Route

Vel Sheet 10 van 24
Plan P582/06



Die Suid Afrikaanse Nasionale Padagentskap Beperk
The South African National Roads Agency Limited

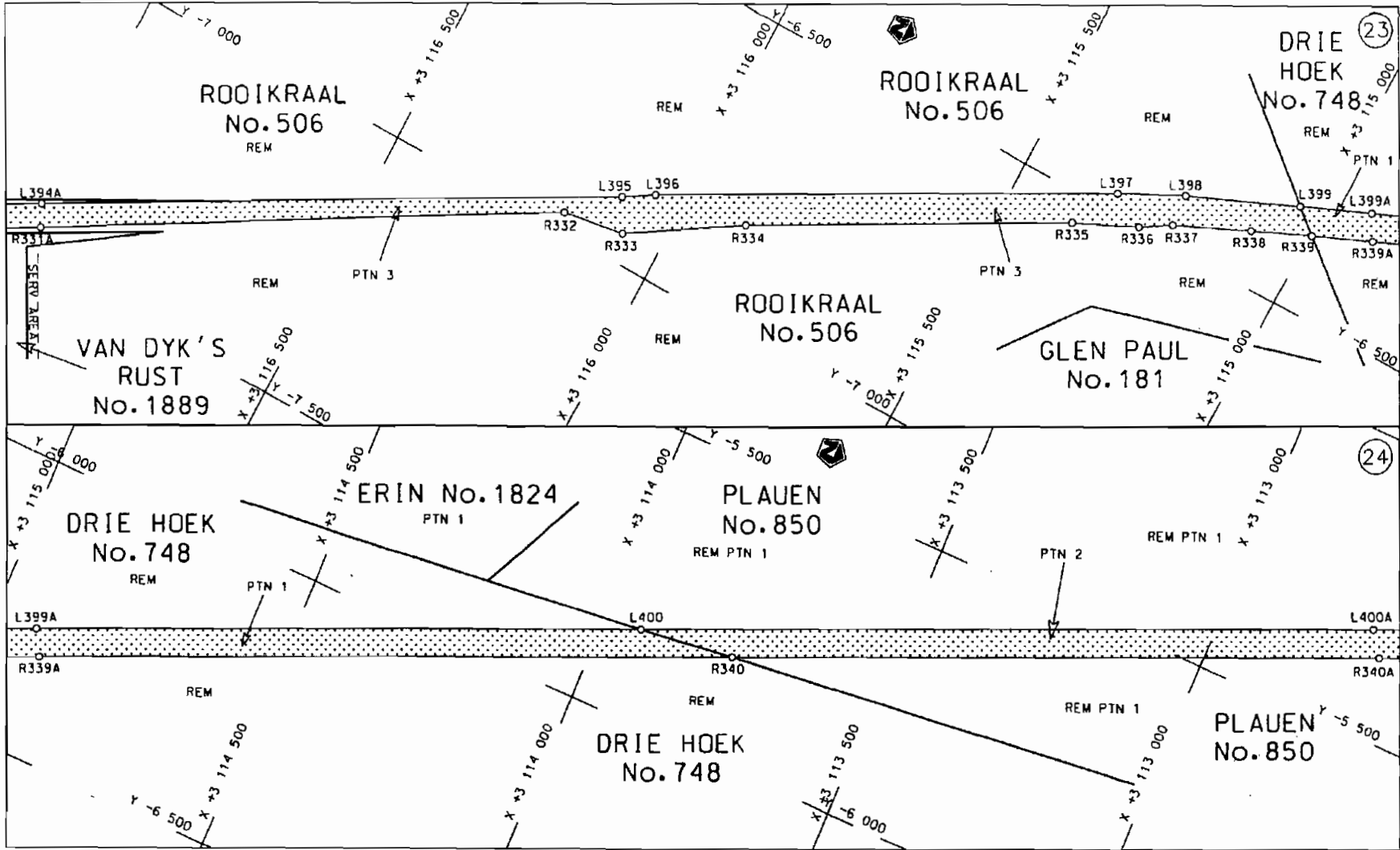
Die figuur getoon
The figure shown

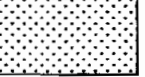


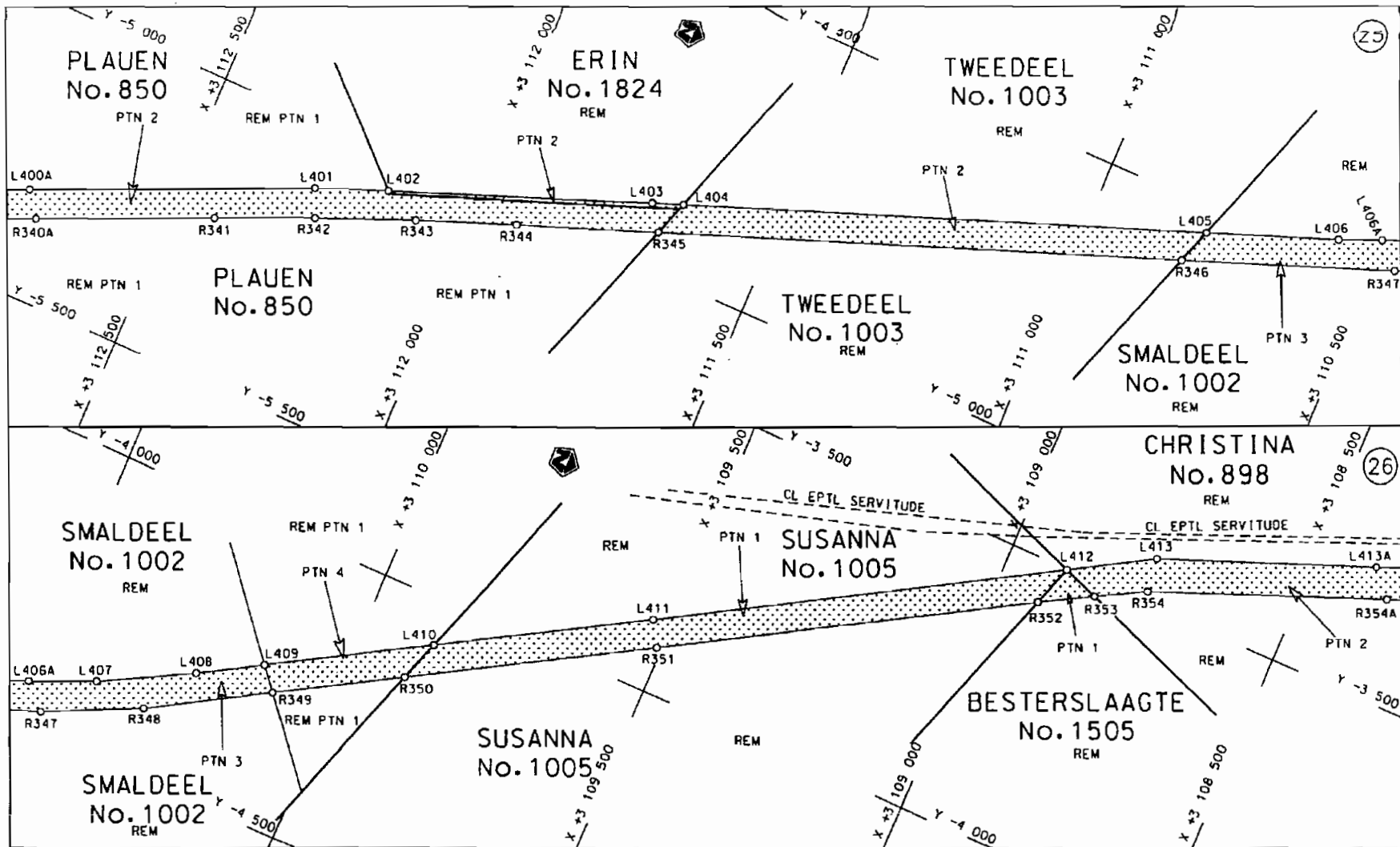
steldie padreserwe voor van 'n gedeelte
represents the road reserve of a portion
van Nasionale Roete N3 Sektie Section
of National Route 7X

Vel Sheet 11 van of 24
Plan P582/06

D.O.9.A



<p>Die Suid Afrikaanse Nasionale Padagentskap Beprek The South African National Roads Agency Limited</p>	<p>Die figuur getoon The figure shown</p>		<p>steldie padreserwe voor van 'n gedeelte represents the road reserve of a portion van Nasionale Roete N3 Seksie 7X of National Route</p>	<p>Vel Sheet 12 of 24 Plan P582/06</p>
--	---	--	--	--



Die Suid Afrikaanse Nasionale Padogentskop Beperk
The South African National Roads Agency Limited

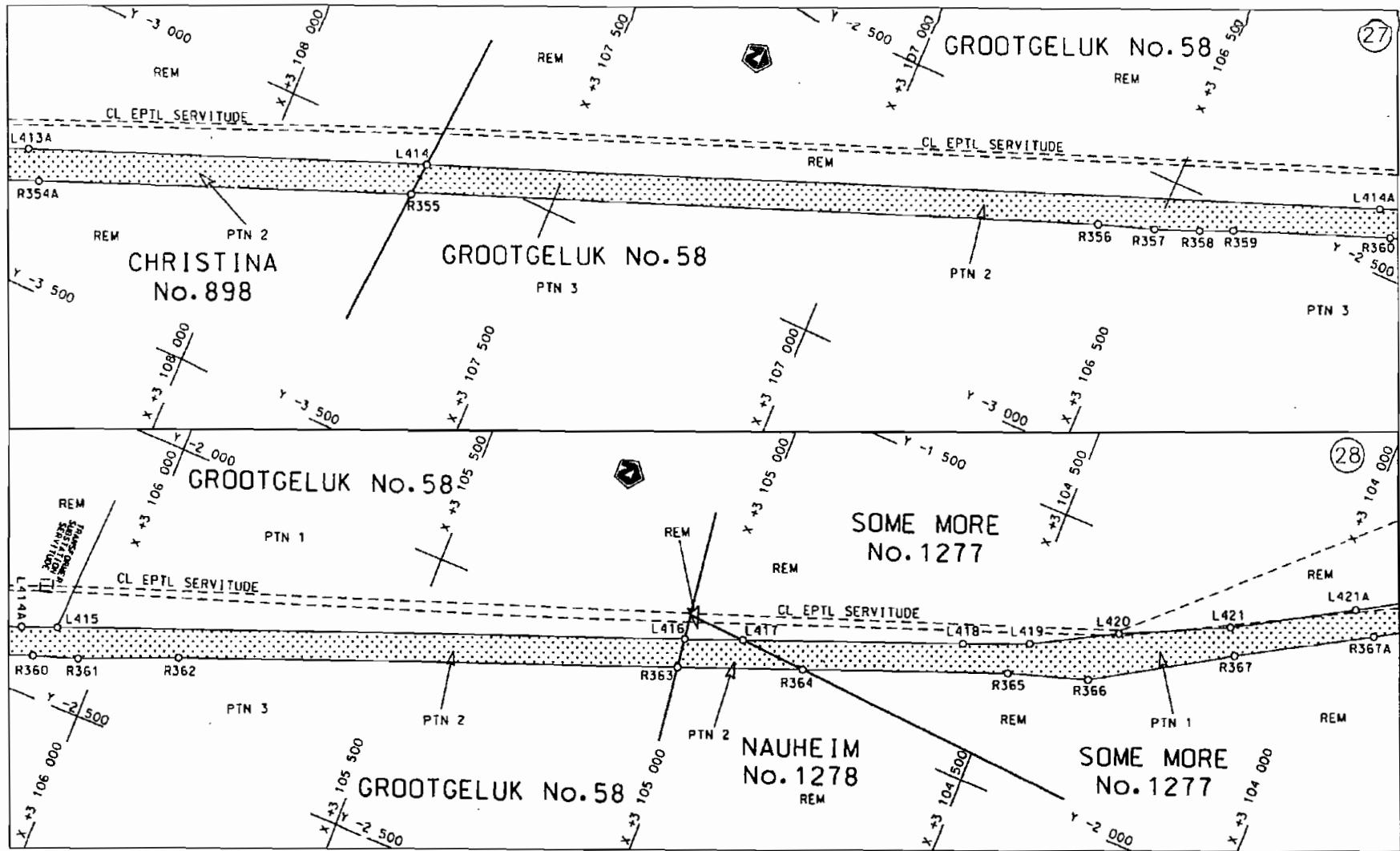
Die figuur getoon
The figure shown




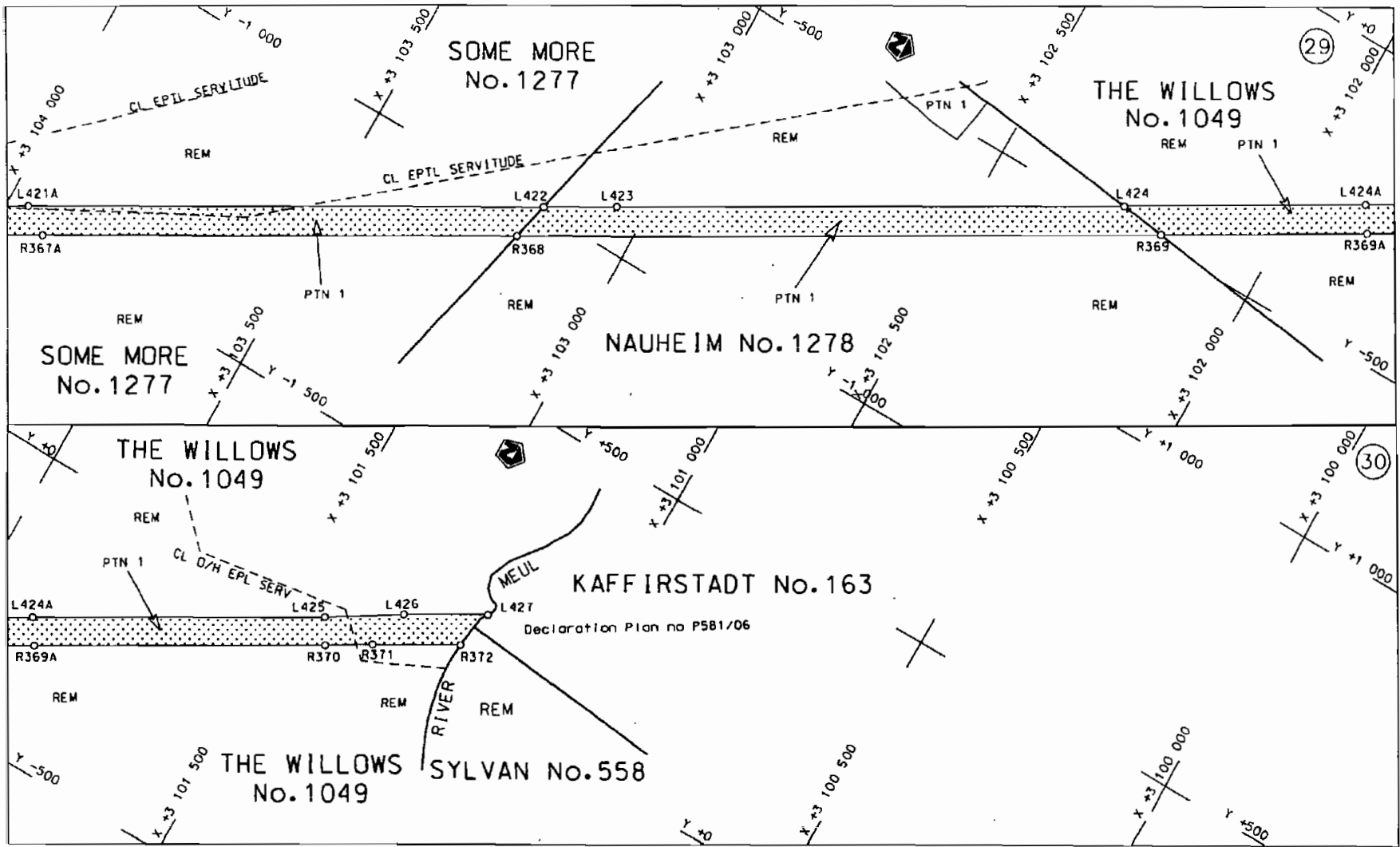
steldie padreserwe voor van 'n gedeelte
represents the road reserve of a portion
van Nasionale Roete N3 Sektie 7X
of National Route


Vel Sheet 13 van 24
Plan P582/06

D.O.9.A



<p>Die Suid Afrikaanse Nasionale Padagentskap Beperk The South African National Roads Agency Limited</p>	<p>Die figuur getoon The figure shown</p> 	<p>steldie padreserwe voor van 'n gedeelte represents the road reserve of a portion van Nasionale Roete N3 of National Route N3</p> <p>Seksie 7X</p>	<p>Vel Sheet 14 van of 24 Plan P582/06</p>
--	--	--	--



Die Suid Afrikaanse Nasionale Padagentskap Beperk The South African National Roads Agency Limited	Die figuur getoon The figure shown	 steldie podreserwe voor van 'n gedeelte represents the road reserve of a portion van Nasionale Roete N3 Seksie 7X of National Route N3 Seksie 7X	Vel 15 van 24 Sheet 15 of 24 Plan P582/06
--	---------------------------------------	--	---

D.O.9.A

PADRESERWE KOÖRDINATE				/	ROAD RESERVE CO-ORDINATES			
LINKERKANT/LEFT HAND SIDE					REGTERKANT/RIGHT HAND SIDE			
	Y	X	WG	29°	Y	X		
L1	-36 583.61	3 139	733.62	R1	-36 602.30	3 139	712.47	
L2	-36 537.82	3 139	709.59	R2	-36 570.27	3 139	686.58	
LJ	-36 505.85	3 139	716.83	R3	-36 550.75	3 139	679.18	
L4	-36 471.13	3 139	702.89	R4	-36 468.05	3 139	650.17	
L5	-36 419.27	3 139	677.96	R5	-36 430.75	3 139	637.09	
L6	-36 077.45	3 139	552.06	R6	-36 311.61	3 139	593.40	
L7	-35 604.18	3 139	387.62	R7	-36 292.98	3 139	586.46	
La	-35 406.41	3 139	318.93	R8	-36 064.93	3 139	502.12	
L ^g	-35 123.64	3 139	210.21	R9	-35 951.40	3 139	461.11	
L10	-35 033.97	3 139	174.24	R10	-35 636.82	3 139	340.58	
L11	-34 980.82	3 139	160.58	R11	-35 497.03	3 139	290.18	
L12	-34 887.06	3 139	136.69	R12	-35 018.65	3 139	116.67	
L13	-34 804.41	3 139	126.54	R13	-34 848.30	3 139	088.66	
L14	-34 774.12	3 139	127.14	R14	-34 806.89	3 139	084.88	
L15	-34 675.96	3 139	128.93	R15	-34 596.81	3 139	078.64	
L16	-34 550.77	3 139	125.96	R16	-34 529.67	3 139	078.14	
L17	-34 333.13	3 139	124.40	R17	-34 449.22	3 139	083.50	
L18	-34 240.01	3 139	126.65	R18	-34 249.60	3 139	083.88	
L19	-34 113.47	3 139	132.32	R19	-34 052.94	3 139	084.02	
L20	-34 072.73	3 139	133.10	R20	-33 886.23	3 139	084.21	
L21	-34 025.09	3 139	134.02	R21	-33 684.44	3 139	084.80	
L22	-33 885.49	3 139	128.03	R22	-33 529.69	3 139	087.36	
L23	-33 601.11	3 139	128.24	R23	-33 477.92	3 139	093.55	
L24	-33 531.29	3 139	130.39	R24	-33 408.37	3 139	112.63	
L25	-33 433.02	3 139	149.68	R25	-33 356.01	3 139	133.17	
L26	-33 350.13	3 139	192.08	R26	-33 296.36	3 139	167.58	
L27	-33 307.09	3 139	217.96	R27	-33 241.01	3 139	211.35	
L28	-33 228.46	3 139	285.38	R28	-33 200.06	3 139	253.91	
L29	-33 129.58	3 139	431.42	R29	-33 188.10	3 139	268.70	
L30	-33 050.25	3 139	540.84	R30	-33 170.08	3 139	291.05	
L31	-32 993.74	3 139	626.66	R31	-33 090.00	3 139	409.34	
L32	-32 969.60	3 139	670.67	R32	-32 988.41	3 139	561.65	
L33	-32 946.69	3 139	705.46	R33	-32 942.77	3 139	629.65	
L34	-32 867.22	3 139	817.50	R34	-32 845.05	3 139	775.97	
L35	-32 819.33	3 139	885.01	R35	-32 769.17	3 139	889.55	
L36	-32 795.87	3 139	928.83	R36	-32 737.54	3 139	932.41	
L37	-32 770.67	3 139	964.72	R37	-32 712.06	3 139	961.53	
L38	-32 737.99	3 140	000.25	R38	-32 691.97	3 139	982.19	
L39	-32 671.56	3 140	057.60	R39	-32 670.11	3 140	002.09	
L40	-32 599.59	3 140	106.84	R40	-32 643.37	3 140	023.97	
L41	-32 478.20	3 140	153.23	R41	-32 575.79	3 140	066.45	
L42	-32 434.49	3 140	163.78	R42	-32 502.98	3 140	098.35	
L43	-32 391.42	3 140	168.50	R43	-32 464.29	3 140	110.46	
L44	-32 346.08	3 140	168.82	R44	-32 414.58	3 140	120.25	
L45	-32 263.60	3 140	159.07	R45	-32 354.17	3 140	124.20	
L46	-32 205.90	3 140	146.27	R46	-32 298.98	3 140	122.03	
L47	-32 193.42	3 140	166.88	R47	-32 226.24	3 140	107.98	
L48	-32 120.64	3 140	125.70	R48	-32 150.31	3 140	081.46	
L49	-31 998.67	3 140	071.95	R49	-32 078.20	3 140	047.86	
L50	-31 856.79	3 140	003.31	R50	-31 906.53	3 139	966.99	
L51	-31 844.96	3 140	002.79	R51	-31 750.96	3 139	893.70	
				Vel	16	Van	24	P582/06
				Sheet		of		

PADRESERWE KOÖRDINATE				/	ROAD RESERVE CO-ORDINATES			
LINKERKANT/LEFT HAND SIDE					REGTERKANT/RIGHT HAND SIDE			
	Y	X	WG	29°	Y	X		
L52	-31 837.69	3 139 999.32		R52	-31 424.07	3 139 739.35		
L53	-31 829.89	3 139 990.32		R53	-31 315.27	3 139 687.99		
LS4	-31 801.90	3 139 977.17		R54	-31 205.86	3 139 636.60		
LI5	-31 706.84	3 139 932.45		R55	-31 137.21	3 139 594.35		
LI6	-31 415.41	3 139 792.85		R56	-31 070.07	3 139 553.06		
LI7	-31 360.66	3 139 757.79		R57	-30 915.25	3 139 429.41		
L58	-31 236.86	3 139 698.87		R58	-30 787.48	3 139 327.95		
L59	-31 111.89	3 139 638.55		R59	-30 671.52	3 139 266.83		
L60	-31 011.29	3 139 571.71		R60	-30 620.30	3 139 240.16		
L61	-30 949.71	3 139 519.10		R61	-30 571.69	3 139 214.26		
L62	-30 887.68	3 139 462.61		R62	-30 492.89	3 139 193.28		
L63	-30 831.10	3 139 415.44		R63	-30 393.89	3 139 171.44		
L54	-30 768.89	3 139 369.30		R64	-30 214.62	3 139 145.34		
L65	-30 696.77	3 139 325.48		R65	-30 006.27	3 139 115.13		
L66	-30 657.43	3 139 304.06		R66	-29 938.07	3 139 099.41		
L67	-30 592.71	3 139 278.44		R67	-29 917.12	3 139 099.33		
L68	-30 492.62	3 139 244.88		R68	-29 894.88	3 139 095.34		
L69	-30 419.26	3 139 225.72		R69	-29 866.55	3 139 090.52		
L70	-30 368.73	3 139 222.73		R70	-29 736.31	3 139 068.31		
L71	-30 341.67	3 139 222.11		R71	-29 696.67	3 139 059.66		
L72	-30 293.39	3 139 218.67		R72	-29 658.42	3 139 047.77		
L73	-30 245.52	3 139 212.68		R73	-29 621.53	3 139 032.17		
L74	-30 139.86	3 139 198.37		R74	-29 585.84	3 139 013.88		
L75	-30 081.11	3 139 185.36		R75	-29 551.93	3 138 991.89		
L76	-30 018.87	3 139 169.73		R76	-29 524.98	3 138 969.47		
L77	-29 947.58	3 139 148.86		R77	-29 490.59	3 138 940.90		
L78	-29 922.93	3 139 149.79		R78	-29 401.16	3 138 859.30		
L79	-29 919.61	3 139 146.16		R79	-29 369.73	3 138 833.71		
L80	-29 846.22	3 139 138.69		R80	-29 337.68	3 138 809.73		
L81	-29 799.46	3 139 128.01		R81	-29 326.57	3 138 802.71		
L82	-29 727.95	3 139 118.18		R82	-29 304.64	3 138 786.89		
L83	-29 668.84	3 139 103.24		R83	-29 236.32	3 138 745.81		
LB4	-29 628.47	3 139 088.94		R84	-29 164.19	3 138 710.48		
L85	-29 565.65	3 139 057.54		R85	-28 705.93	3 138 578.74		
L86	-29 529.04	3 139 034.52		R86	-28 661.60	3 138 566.05		
L87	-29 500.62	3 139 015.27		R87	-28 556.33	3 138 517.59		
L88	-29 471.23	3 138 993.91		R88	-28 495.64	3 138 489.66		
L89	-29 455.12	3 138 969.00		R89	-28 411.26	3 138 439.69		
L90	-29 404.91	3 138 927.63		R90	-28 324.76	3 138 376.10		
L91	-29 334.36	3 138 863.85		R91	-28 262.76	3 138 321.88		
L92	-29 303.85	3 138 843.08		R92	-28 188.23	3 138 247.56		
L93	-29 244.04	3 138 807.71		R93	-28 139.60	3 138 181.32		
L94	-29 090.69	3 138 741.58		R94	-28 071.61	3 138 084.83		
L95	-28 975.07	3 138 696.77		R95	-28 026.55	3 138 013.46		
L96	-28 843.75	3 138 650.56		R96	-28 000.25	3 137 963.25		
L97	-28 727.82	3 138 620.14		R97	-27 969.09	3 137 865.56		
L98	-28 699.17	3 138 609.26		R98	-27 939.98	3 137 778.79		
L99	-28 510.56	3 138 537.62		R99	-27 915.43	3 137 709.11		
L100	-28 483.94	3 138 525.63		RI00	-27 897.49	3 137 627.51		
L101	-28 408.09	3 138 483.16		RI01	-27 887.85	3 137 554.18		
L102	-28 408.78	3 138 481.64		RI02	-27 872.11	3 137 451.14		

PADRESERWE KOORDINATE				/	ROAD RESERVE CO-ORDINATES			
LINKERKANT/LEFT HAND SIDE					REGTERKANT/RIGHT HAND SIDE			
	Y	X	WG	29°	y	X		
L103	-28 366.34	3 138	452.05	R103	-27 863.89	3 137	397.29	
L104	-28 335.88	3 138	429.98	R104	-27 857.30	3 137	324.14	
L105	-28 271.80	3 138	377.83	R105	-27 848.61	3 137	251.98	
L106	-28 239.30	3 138	349.51	R106	-27 837.09	3 137	166.23	
L107	-28 211.46	3 138	324.42	R107	-27 823.19	3 137	041.48	
L108	-28 151.35	3 138	262.34	R108	-27 820.74	3 137	018.97	
L109	-28 123.67	3 138	227.36	R109	-27 819.72	3 136	997.80	
L110	-28 097.23	3 138	192.58	R110	-27 803.35	3 136	855.81	
L111	-28 038.88	3 138	108.67	R111	-27 799.92	3 136	826.00	
L112	-27 998.24	3 138	043.21	R112	-27 796.91	3 136	799.91	
L113	-27 976.18	3 138	011.07	R113	-27 793.21	3 136	779.51	
L114	-27 943.85	3 137	969.48	R114	-27 780.59	3 136	701.07	
L115	-27 935.98	3 137	916.63	R115	-27 766.52	3 136	619.49	
L116	-27 921.57	3 137	876.15	R116	-27 743.85	3 136	542.47	
L117	-27 893.45	3 137	797.17	R117	-27 711.20	3 136	467.53	
L118	-27 880.20	3 137	742.98	R118	-27 653.06	3 136	359.26	
L119	-27 868.61	3 137	689.61	R119	-27 600.25	3 136	270.08	
L120	-27 851.12	3 137	598.29	R120	-27 562.12	3 136	219.35	
L121	-27 837.97	3 137	532.07	R121	-27 497.62	3 136	143.51	
L122	-27 832.80	3 137	488.23	R122	-27 436.87	3 136	089.75	
L123	-27 829.00	3 137	456.03	R123	-27 373.03	3 136	042.46	
L124	-27 829.17	3 137	395.67	R124	-27 303.86	3 136	003.74	
L125	-27 824.99	3 137	363.92	R125	-27 222.90	3 135	959.77	
L126	-27 812.94	3 137	293.63	R126	-27 111.82	3 135	907.39	
L127	-27 804.55	3 137	213.66	R127	-27 010.09	3 135	850.77	
L128	-27 796.49	3 137	136.82	R128	-26 541.10	3 135	623.47	
L129	-27 786.71	3 137	085.07	R129	-26 426.92	3 135	567.15	
L130	-27 778.18	3 137	018.22	R130	-26 336.39	3 135	522.50	
L131	-27 775.07	3 136	993.79	R131	-26 053.60	3 135	383.01	
L132	-27 762.66	3 136	896.52	R132	-25 514.84	3 135	116.37	
L133	-27 758.87	3 136	866.76	R133	-25 096.86	3 134	910.18	
L134	-27 755.07	3 136	837.00	R134	-24 990.84	3 134	846.17	
L135	-27 742.67	3 136	739.75	R135	-24 951.60	3 134	822.47	
L136	-27 742.46	3 136	695.25	R136	-24 879.82	3 134	772.83	
L137	-27 738.62	3 136	679.21	R137	-24 825.05	3 134	713.98	
L138	-27 731.36	3 136	679.64	R138	-24 684.16	3 134	449.42	
L139	-27 704.74	3 136	590.42	R139	-24 537.29	3 134	206.58	
L140	-27 657.49	3 136	448.34	R140	-24 493.96	3 134	152.02	
L141	-27 607.45	3 136	362.20	R141	-24 473.41	3 134	130.83	
L142	-27 570.96	3 136	304.97	R142	-24 434.10	3 134	091.17	
L143	-27 558.82	3 136	285.87	R143	-24 371.90	3 134	030.81	
L144'	-27 505.20	3 136	228.91	R144	-24 304.58	3 133	970.56	
L145	-27 406.25	3 136	131.64	R145	-24 254.40	3 133	929.15	
L146	-27 312.93	3 136	059.19	R146	-24 201.67	3 133	883.50	
L147	-27 226.22	3 136	013.17	R147	-24 067.10	3 133	763.96	
L148	-27 104.80	3 135	952.53	R148	-23 962.09	3 133	662.87	
L149	-27 066.92	3 135	935.27	R149	-23 878.88	3 133	596.51	
L150	-27 030.33	3 135	918.59	R150	-23 844.54	3 133	571.59	
L151	-26 939.55	3 135	868.33	R151	-23 777.06	3 133	523.62	
L152	-26 548.80	3 135	675.25	R152	-23 723.04	3 133	511.58	
L153	-26 501.68	3 135	652.51	R153	-23 677.54	3 133	497.30	
				Vel	18	Van	24	<i>P582j06</i>
				Sheet		of		

PADRESERWE KOORDINATE				/	ROAD RESERVE CO-ORDINATES			
LINKERKANT/LEFT HAND SIDE					REGTERKANT/RIGHT HAND SIDE			
	y	X	WG	29'	Y	X		
LI54	-26 454.67	3 135	629.18	R154	-23 640.96	3 133	491.09	
LI55	-26 385.38	3 135	596.42	R155	-23 574.99	3 133	489.09	
LI56	-26 398.21	3 135	615.82	R156	-23 513.41	3 133	499.44	
LI57	-26 300.84	3 135	568.88	R157	-23 455.71	3 133	521.61	
LI58	-26 036.21	3 135	441.29	R158	-23 405.67	3 133	551.19	
LI59	-25 679.41	3 135	269.28	R159	-23 371.57	3 133	581.80	
LI60	-25 346.27	3 135	108.67	R160	-23 339.57	3 133	614.30	
LI61	-25 056.67	3 134	969.06	R161	-23 308.21	3 133	664.66	
LI62	-25 069.51	3 134	950.25	R162	-23 248.35	3 133	783.95	
LI63	-24 965.75	3 134	911.92	R163	-23 214.18	3 133	836.12	
LI64	-24 914.81	3 134	873.28	R164	-23 174.92	3 133	879.23	
LI65	-24 802.88	3 134	773.32	R165	-23 134.96	3 133	911.69	
LI66	-24 773.87	3 134	740.07	R166	-23 118.00	3 133	923.60	
LI67	-24 700.77	3 134	626.42	R167	-23 099.54	3 133	934.76	
LI68	-24 643.96	3 134	526.03	R168	-23 060.48	3 133	957.34	
LI69	-24 563.07	3 134	362.72	R169	-23 019.71	3 133	975.13	
LI70	-24 513.64	3 134	284.52	R170	-22 975.59	3 133	987.27	
LI71	-24 459.27	3 134	212.85	R171	-22 930.22	3 133	994.11	
LI72	-24 402.63	3 134	146.98	R172	-22 840.39	3 133	997.75	
LI73	-24 335.95	3 134	088.52	R173	-22 795.75	3 133	990.50	
LI74	-24 236.75	3 133	990.34	R174	-22 698.07	3 133	960.81	
LI75	-24 137.71	3 133	897.47	R175	-22 593.14	3 133	894.36	
LI76	-24 070.54	3 133	849.44	R176	-22 562.06	3 133	862.86	
LI77	-23 986.74	3 133	798.26	R177	-22 532.37	3 133	828.30	
LI78	-23 904.11	3 133	761.57	R178	-22 358.54	3 133	564.44	
LI79	-23 874.50	3 133	757.02	R179	-22 338.72	3 133	540.93	
LI80	-23 826.73	3 133	743.53	R180	-22 306.99	3 133	510.10	
LI81	-23 772.08	3 133	719.26	R181	-22 232.90	3 133	456.67	
LI82	-23 729.89	3 133	703.11	R182	-22 179.80	3 133	429.56	
LI83	-23 667.23	3 133	687.61	R183	-22 110.99	3 133	405.12	
LI84	-23 629.67	3 133	684.41	R184	-22 005.46	3 133	388.31	
LI85	-23 622.18	3 133	684.20	R185	-21 356.83	3 133	339.51	
LI86	-23 593.53	3 133	685.02	R186	-20 889.49	3 133	305.83	
LI87	-23 503.66	3 133	698.44	R187	-20 325.07	3 133	263.71	
LI88	-23 462.32	3 133	712.55	R188	-20 169.89	3 133	260.28	
LI89	-23 421.28	3 133	730.43	R189	-20 059.00	3 133	277.25	
LI90	-23 382.72	3 133	752.26	R190	-19 924.67	3 133	305.97	
LI91	-23 345.74	3 133	778.56	R191	-19 584.11	3 133	404.13	
LI92	-23 178.04	3 133	930.45	R192	-19 551.69	3 133	424.87	
LI93	-23 108.93	3 133	977.07	R193	-19 198.53	3 133	527.76	
LI94	-23 068.63	3 133	999.11	R194	-19 015.56	3 133	581.08	
LI95	-23 028.26	3 134	017.94	R195	-18 805.37	3 133	625.22	
LI96	-22 982.74	3 134	029.84	R196	-18 698.55	3 133	643.57	
LI97	-22 891.33	3 134	039.76	R197	-18 580.06	3 133	657.02	
LI98	-22 831.56	3 134	039.72	R198	-18 506.28	3 133	664.44	
LI99	-22 787.97	3 134	034.92	R199	-18 389.56	3 133	671.64	
LI200	-22 742.71	3 134	023.30	R200	-18 250.74	3 133	677.04	
LI201	-22 693.95	3 134	005.96	R201	-17 683.40	3 133	693.28	
LI202	-22 658.59	3 133	989.77	R202	-17 119.94	3 133	708.39	
LI203	-22 620.41	3 133	967.17	R203	-17 001.76	3 133	707.47	
LI204	-22 581.39	3 133	940.70	R204	-16 840.14	3 133	692.04	
				Vel	19	Van	24	P582/06
				Sheet		of		

PADRESERWE KOORDINATE				/ ROAD RESERVE CO-ORDINATES			
LINKERKANT/LEFT HAND SIDE				REGTERKANT/RIGHT HAND SIDE			
	Y	X	WG	29°	Y	X	
L205	-22 548.48	3 133	909.62	R205	-16 704.48	3 133	669.60
L206	-22 508.90	3 133	866.87	R206	-16 604.61	3 133	645.64
L207	-22 482.53	3 133	830.03	R207	-16 519.63	3 133	620.82
L208	-22 384.84	3 133	678.38	R208	-16 349.40	3 133	546.58
L209	-22 362.22	3 133	639.37	R209	-16 225.03	3 133	485.63
L210	-22 313.54	3 133	573.31	R210	-16 105.33	3 133	417.37
L211	-22 274.45	3 133	534.40	R211	-15 990.83	3 133	340.36
L212	-22 239.88	3 133	508.16	R212	-15 881.45	3 133	255.58
L213	-22 200.41	3 133	484.69	R213	-15 844.52	3 133	222.89
L214	-22 158.32	3 133	465.64	R214	-15 489.18	3 132	907.30
L215	-22 054.83	3 133	437.50	R215	-15 197.72	3 132	648.23
L216	-22 033.52	3 133	431.78	R216	-15 094.43	3 132	556.41
L217	-21 895.51	3 133	419.43	R217	-14 877.48	3 132	363.61
L218	-21 613.35	3 133	398.27	R218	-14 725.67	3 132	240.34
L219	-21 395.82	3 133	384.29	R219	-14 655.74	3 132	176.95
L220	-21 049.44	3 133	361.77	R220	-14 488.86	3 132	025.68
L221	-20 899.65	3 133	346.70	R221	-13 340.11	3 131	005.56
L222	-20 627.49	3 133	327.78	R222	-13 290.32	3 130	907.11
L223	-20 469.79	3 133	320.42	R223	-13 284.11	3 130	910.48
L224	-20 388.84	3 133	312.59	R224	-13 233.09	3 130	824.07
L225	-20 314.19	3 133	304.12	R225	-13 228.04	3 130	711.55
L226	-20 270.51	3 133	302.81	R226	-13 224.05	3 130	622.63
L227	-20 204.99	3 133	303.61	R227	-13 269.97	3 130	457.08
L228	-20 062.32	3 133	318.69	R228	-13 315.29	3 130	295.35
L229	-19 874.86	3 133	367.80	R229	-13 377.31	3 130	228.40
L230	-19 771.78	3 133	398.51	R230	-13 488.97	3 130	176.66
L231	-19 711.13	3 133	423.12	R231	-13 573.10	3 130	129.02
L232	-19 589.81	3 133	451.90	R232	-13 646.41	3 130	066.19
L233	-19 199.10	3 133	573.42	R233	-13 706.25	3 129	989.25
L234	-18 966.63	3 133	632.43	R234	-13 734.46	3 129	923.79
L235	-18 735.41	3 133	676.37	R235	-13 755.19	3 129	860.56
L236	-18 585.89	3 133	696.38	R236	-13 770.28	3 129	835.03
L237	-18 434.84	3 133	707.84	R237	-13 780.22	3 129	775.04
L238	-17 870.95	3 133	727.46	R238	-13 782.13	3 129	756.59
L239	-17 693.39	3 133	732.53	R239	-13 794.01	3 129	642.14
L240	-17 369.54	3 133	738.45	R240	-13 813.13	3 129	458.00
L241	-17 258.56	3 133	742.58	R241	-13 833.85	3 129	258.27
L242	-17 063.72	3 133	754.33	R242	-13 842.30	3 129	267.99
L243	-16 975.96	3 133	743.89	R243	-13 841.66	3 129	187.79
L244	-16 856.27	3 133	734.11	R244	-13 855.83	3 129	042.03
L245	-16 678.96	3 133	703.95	R245	-13 859.07	3 128	958.40
L246	-16 596.52	3 133	682.33	R246	-13 839.39	3 128	785.99
L247	-16 504.66	3 133	655.87	R247	-13 807.82	3 128	664.40
L248	-16 412.60	3 133	625.78	R248	-13 776.05	3 128	583.04
L249	-16 329.56	3 133	592.67	R249	-13 760.78	3 128	552.82
L250	-16 240.46	3 133	548.75	R250	-13 717.47	3 128	468.24
L251	-16 202.19	3 133	530.64	R251	-13 604.48	3 128	315.67
L252	-16 079.37	3 133	460.09	R252	-13 464.05	3 128	187.53
L252X	-15 961.80	3 133	380.95	R253	-13 328.32	3 128	103.69
L252Y	-15 849.42	3 133	294.00	R254	-13 312.30	3 128	117.99
L253	-15 663.33	3 133	128.53	R255	-13 193.73	3 128	053.31

Vel
Sheet

20

Van
of

24

P582/06

PADRESERWE KOORDINATE				ROAD RESERVE CO-ORDINATES			
LINKERKANT/LEFT HAND SIDE				REGTERKANT/RIGHT HAND SIDE			
	y	X	WG	29°	Y	X	
L254	-15	450.14	3	132	941.27	R256	-13 153.84 3 128 023.48
L255	-15	166.22	3	132	691.88	R257	-13 163.07 3 128 014.65
L256	-14	620.88	3	132	212.87	R258	-13 149.80 3 128 021.02
L257	-14	118.51	3	131	771.60	R259	-13 052.12 3 127 975.78
L258	-13	492.16	3	131	220.82	R260	-12 919.62 3 127 906.70
L259	-13	338.03	3	131	085.41	R261	-12 723.80 3 127 809.97
L260	-13	265.62	3	131	020.78	R262	-12 730.73 3 127 788.61
L261	-13	168.27	3	130	887.32	R263	-12 285.28 3 127 554.71
L262	-13	117.55	3	130	794.44	R264	-12 254.31 3 127 509.54
L263	-13	058.50	3	130	621.66	R265	-12 232.88 3 127 489.01
L264	-13	034.88	3	130	515.77	R266	-12 204.26 3 127 435.83
L265	-13	006.12	3	130	407.78	R267	-12 168.49 3 127 414.58
L266	-12	952.00	3	130	430.40	R268	-12 119.04 3 127 442.90
L267	-12	923.82	3	130	414.17	R269	-11 848.37 3 127 287.70
L268	-12	982.38	3	130	381.61	R270	-11 726.91 3 127 215.74
L269	-12	991.51	3	130	363.66	R271	-11 555.43 3 126 912.27
L270	-12	943.89	3	130	177.99	R272	-11 427.74 3 126 844.49
L271	-12	908.97	3	130	100.89	R273	-11 426.27 3 126 817.38
L272	-12	867.19	3	130	050.06	R274	-11 391.57 3 126 817.85
L273	-12	809.30	3	130	001.93	R275	-11 387.07 3 126 856.82
L274	-12	724.26	3	129	955.78	R276	-11 353.09 3 126 852.90
L275	-12	629.44	3	129	912.77	R277	-11 307.93 3 126 847.69
L276	-12	650.31	3	129	891.12	R278	-11 233.66 3 126 800.61
L277	-12	670.38	3	129	863.94	R279	-11 189.95 3 126 749.96
L278	-12	678.62	3	129	858.02	R280	-11 172.92 3 126 687.93
L279	-12	733.76	3	129	897.11	R281	-11 164.14 3 126 655.97
L280	-12	842.89	3	129	951.97	R282	-11 160.07 3 126 569.75
L281	-12	885.89	3	129	984.99	R283	-11 197.45 3 126 419.71
L282	-12	914.16	3	130	012.23	R284	-11 273.91 3 126 244.15
L283	-12	941.80	3	130	038.96	R285	-11 309.03 3 126 180.91
L284	-12	969.01	3	130	093.61	R286	-11 365.20 3 126 125.15
L285	-13	118.06	3	130	296.29	R287	-11 430.75 3 126 059.22
L286	-13	205.46	3	130	248.77	R288	-11 507.55 3 126 021.11
L287	-13	313.43	3	130	177.94	R289	-11 571.20 3 125 979.89
L288	-13	332.43	3	130	169.28	R290	-11 626.17 3 125 957.78
L289	-13	376.01	3	130	149.79	R291	-11 707.31 3 125 928.03
L290	-13	497.28	3	130	105.39	R292	-11 774.79 3 125 899.03
L291	-13	576.06	3	130	047.41	R293	-11 902.69 3 125 812.30
L292	-13	603.56	3	130	027.19	R294	-11 944.86 3 125 765.34
L293	-13	676.03	3	129	939.74	R295	-11 979.52 3 125 712.23
L294	-13	685.68	3	129	908.53	R296	-11 987.44 3 125 699.96
L295	-13	717.63	3	129	810.57	R297	-12 019.38 3 125 628.85
L296	-13	720.53	3	129	791.63	R298	-12 040.15 3 125 553.68
L297	-13	730.23	3	129	707.93	R299	-12 049.08 3 125 476.24
L298	-13	747.60	3	129	558.64	R300	-12 046.44 3 125 398.61
L299	-13	754.29	3	129	490.79	R301	-12 031.72 3 125 322.00
L300	-13	755.98	3	129	472.91	R302	-11 970.93 3 125 176.85
						R303	-11 923.05 3 125 115.18
						R304	-11 805.70 3 125 001.29
						R305	-11 802.43 3 124 982.77
						R306	-11 779.69 3 124 960.62

Vel	21	Van	24	P582/06
Sheet		of		

PADRESERWE KOORDINATE				ROAD RESERVE CO-ORDINATES			
LINKERKANT/LEFT HAND SIDE				REGTERKANT/RIGHT HAND SIDE			
	y	X	WG	29°	Y	X	
LJ01	-13 765.35	3 129	378.51	R307	-11 761.09	3 124	958.56
LJ02	-13 771.39	3 129	320.07	R308	-11 378.04	3 124	586.22
LJ03	-13 777.78	3 129	257.02	R309	-11 325.05	3 124	528.68
LJ04	-13 782.09	3 129	218.24	R310	-11 284.55	3 124	470.73
LJ05	-13 782.94	3 129	211.04	R311	-11 227.50	3 124	379.70
LJ06	-13 788.01	3 129	183.83	R312	-10 744.81	3 123	537.36
LJ07	-13 790.79	3 129	142.42	R313	-10 252.88	3 122	678.92
LJ08	-13 797.48	3 129	042.03	R314	-10 198.56	3 122	579.22
LJ09	-13 799.99	3 128	932.50	R315	-10 186.42	3 122	556.92
LJ10	-13 789.52	3 128	823.30	R316	-10 125.65	3 122	432.09
LJ11	-13 765.60	3 128	716.40	R317	-10 070.79	3 122	304.64
LJ12	-13 726.88	3 128	613.93	R318	-9 873.08	3 121	808.22
LJ13	-13 677.16	3 128	516.62	R319	-9 686.82	3 121	340.49
LJ14	-13 614.20	3 128	427.61	R320	-9 241.83	3 120	223.15
LJ15	-13 545.20	3 128	342.17	R321	-9 184.01	3 120	094.35
LJ16	-13 466.05	3 128	266.05	R322	-9 152.56	3 120	033.27
L117	-13 378.07	3 128	200.10	R323	-9 119.41	3 119	968.82
L118	-13 284.06	3 128	142.95	R324	-8 880.93	3 119	543.03
L119	-13 271.29	3 128	137.30	R325	-8 794.14	3 119	388.09
L120	-13 151.58	3 128	084.42	R326	-8 698.96	3 119	218.15
L121	-13 109.81	3 128	065.60	R327	-8 676.82	3 119	171.58
L122	-13 083.64	3 128	052.76	R328	-8 673.18	3 119	163.89
L123	-12 965.97	3 127	995.45	R329	-8 620.79	3 119	078.61
L124	-12 740.02	3 127	869.66	R330	-8 044.10	3 118	049.08
L125	-12 688.70	3 127	835.91	R331	-7 719.31	3 117	469.16
L126	-12 615.27	3 127	793.39	R332	-6 969.04	3 116	179.53
L127	-12 587.66	3 127	777.41	R333	-6 950.26	3 116	071.35
L128	-12 449.96	3 127	697.40	R334	-6 832.30	3 115	885.22
L129	-12 243.99	3 127	578.01	R335	-6 548.98	3 115	379.32
L130	-12 144.73	3 127	520.26	R336	-6 498.46	3 115	271.64
L331	-12 109.18	3 127	499.58	R337	-6 466.15	3 115	221.17
L332	-12 073.63	3 127	478.90	R338	-6 407.98	3 115	094.88
L333	-11 981.57	3 127	425.50	R339	-6 364.32	3 114	995.95
L334	-11 886.46	3 127	370.31	R340	-5 821.59	3 113	766.43
L335	-11 726.75	3 127	307.76	R341	-5 228.83	3 112	423.52
L336	-11 671.98	3 127	306.95	R342	-5 157.22	3 112	258.78
L337	-11 545.23	3 127	339.56	R343	-5 088.65	3 112	092.83
L338	-11 541.81	3 127	407.03	R344	-5 023.13	3 111	925.79
L339	-11 536.53	3 127	435.80	R345	-4 932.90	3 111	689.49
L340	-11 508.09	3 127	476.50	R346	-4 600.68	3 110	819.45
L341	-11 505.05	3 127	414.15	R347	-4 466.25	3 110	467.38
L342	-11 484.67	3 127	367.11	R348	-4 388.02	3 110	302.91
L343	-11 403.17	3 127	231.94	R349	-4 269.01	3 110	100.81
L344	-11 205.17	3 126	939.45	R350	-4 149.44	3 109	897.79
L345	-11 143.46	3 126	841.08	R351	-3 920.59	3 109	509.18
L346	-11 119.16	3 126	783.80	R352	-3 574.18	3 108	920.99
L347	-11 104.05	3 126	719.70	R353	-3 524.91	3 108	833.33
L348	-11 094.58	3 126	639.44	R354	-3 478.66	3 108	750.23
L349	-11 094.85	3 126	620.05	R355	-3 073.46	3 107	736.28
L350	-11 104.57	3 126	540.09	R356	-2 622.07	3 106	596.96
L351	-11 126.99	3 126	450.25	R357	-2 589.05	3 106	502.40

Vel 22 Van 24 of P582/06 Sheet of

PADRESERWE KOORDINATE				ROAD RESERVE CO-ORDINATES			
LINKERKANT/LEFT HAND SIDE'				REGTERKANT/RIGHT HAND SIDE			
	Y	X	WG	29°	Y	X	
L352	-11	163.72	3 126	365.58	R358	-2	558.81 3 106 428.36
L353	-11	208.30	3 126	286.43	R359	-2	533.99 3 106 373.51
L354	-11	247.14	3 126	203.74	R360	-2	431.46 3 106 113.11
L355	-11	292.92	3 126	124.81	R361	-2	406.16 3 106 036.72
L356	-11	351.15	3 126	054.91	R362	-2	336.16 3 105 871.22
L357	-11	429.54	3 126	007.76	R363	-2	008.95 3 105 040.72
L358	-11	501.22	3 125	968.66	R364	-1	927.67 3 104 833.69
L359	-11	626.63	3 125	917.03	R365	-1	794.06 3 104 493.30
L360	-11	718.37	3 125	877.57	R366	-1	750.82 3 104 357.52
L361	-11	876.46	3 125	763.16	R367	-1	612.67 3 104 133.52
L362	-11	948.52	3 125	686.63	R368	-1	060.68 3 103 181.22
L363	-11	998.70	3 125	558.65	R369	-	483.39 3 102 185.22
L364	-12	007.92	3 125	446.33	R370	-	38.02 3 101416.86
L365	-11	998.61	3 125	361.53	R371		5.65 3 101 344.73
L366	-11	960.32	3 125	252.75	R372		82.85 3 101 209.24
L367	-11	896.70	3 125	151.28			
L368	-11	759.88	3 125	019.84			
L369	-11	557.85	3 124	824.36			
L370	-11	315.75	3 124	588.03			
L371	-11	252.43	3 124	503.77			
L372	-11	206.47	3 124	431.00			
L373	-11	178.98	3 124	406.67			
L374	-11	012.75	3 124	129.78			
L375	-10	704.25	3 123	569.43			
L376	-10	160.06	3 122	616.97			
L377	-10	149.58	3 122	598.60			
L378	-10	069.25	3 122	435.69			
L379	-10	016.95	3 122	304.64			
L380	-9	802.68	3 121	766.59			
L381	-9	662.82	3 121	415.41			
L382	-9	634.83	3 121	345.12			
L383	-9	225.21	3 120	316.54			
L384	-9	176.83	3 120	196.06			
L385	-9	075.05	3 119	992.72			
L386	-9	016.94	3 119	888.17			
L387	-8	831.44	3 119	556.86			
L388	-8	767.28	3 119	442.28			
L389	-8	655.33	3 119	242.59			
L390	-8	603.02	3 119	157.31			
L391	-8	589.48	3 119	128.87			
L392	-8	577.17	3 119	103.02			
L393	-8	000.51	3 118	073.53			
L394	-7	705.09	3 117	546.08			
L395	-6	896.08	3 116	101.63			
L396	-6	864.24	3 116	050.75			
L397	-6	465.94	3 115	333.42			
L398	-6	410.96	3 115	225.63			
L399	-6	328.96	3 115	038.84			
L400	-5	841.42	3 113	935.25			
L401	-5	110.24	3 112	278.69			
L402	-5	062.45	3 112	156.88			

Vel	23	Van	24	P582/06
Sheet		of		

PADRESERWE KOORDINATE				/	ROAD RESERVE CO-ORDINATES			
LINKERKANT/LEFT HAND SIDE					REGTERKANT/RIGHT HAND SIDE			
	y	X	WG	29°	Y	X		
L403	-4 890.77	3	■■■				719.34	
L404	-4 871.14	3	■■■				667.93	
L405	-4 539.06	3	110				798.20	
L406	-4 455.59	3	110				579.58	
L407	-4 377.78	3	110				397.87	
L408	-4 293.61	3	110				241.11	
L409	-4 230.15	3	110				133.37	
L410	-4 076.82	3	109				873.00	
L411	-3 877.50	3	109				534.52	
L412	-3 501.50	3	108				896.56	
L413	-3 419.59	3	108				757.07	
L414	-3 015.59	3	107				731.48	
L415	-2 370.02	3	106				091.25	
L416	-1 958.90	3	105				047.41	
L417	-1 920.66	3	104				950.47	
L418	-1 777.08	3	104				586.59	
L419	-1 731.56	3	104				476.55	
L420	-1 655.27	3	104				337.40	
L421	-1 569.42	3	104				158.56	
L422	- 993.88	3	103				164.53	
L423	- 927.49	3	103				051.10	
L424	- 472.71	3	102				266.48	
L425	5.23	3	101				441.92	
L426	79.74	3	101				323.30	
L427	154.91	3	101				193.66	

Vel 24
Sheet

Van 24
of

P582/06