

**CONTENTS****INHOUD**

<i>No.</i>	<i>Page No.</i>	<i>Gazette No.</i>	<i>No.</i>	<i>Bladsy No.</i>	<i>Koerant No.</i>
<b>GOVERNMENT NOTICE</b>			<b>GOEWERMENTSKENNISGEWING</b>		
<b>Transport, Department of</b>			<b>Vervoer, Departement van</b>		
<i>Government Notice</i>			<i>Goewernmentskennisgewing</i>		
749			749		
South African National Roads Agency Limited and the National Roads Act (7/199B): The South African National Roads Agency Limited: Declaration amendment of National Road N3 Section 8X: Amendment of Declaration No. 61 of 1983	..	3	Suid-Afrikaanse Nasionale Padagentskap Beperk en die Nasionale Paaie Wet (7/1998): Die Suid-Afrikaanse Nasionale Padagentskap Beperk: Verklaring wysiging van Nasionale Pad N3 Seksie 8X: Wysiging van VerkLaring No. 61 van 1983	..	4
		30198			30198

---

**GOVERNMENT NOTICE  
GOEWERMENTSKENNISGEWING**

---

**DEPARTMENT OF TRANSPORT  
DEPARTEMENT VAN VERVOER**

No. 749

24 August 2007

**THE SOUTH AFRICAN NATIONAL ROADS  
AGENCY LIMITED**

Registration No: 98/09584/06

**DECLARATION AMENDMENT OF NATIONAL ROAD N3 SECTION 8X**

AMENDMENT OF DECLARATION No. 61 OF 1983

By virtue of section 40 (1)(b) of the South African National Roads Agency Limited and the National Roads Act, 1998 (Act NO.7 of 1998), I hereby amend Declaration No. 61 of 1983, by substituting the section from the Meul River (sheet 6 of Plan No. P333/82) up to the common boundary between the farms Hester 1590 portion 1 and Waterval 1021, (sheet 11 of Plan No. P333/82), with the subjoined sheets 1 to.s of Plan P581/06.

**(National Road N3 Section 8X: Meul River - Warden Interchange)**

J. Radtke

# DIE SUID-AFRIKAANSE NASIONALE PADAGENTSKAPBEPERK

Registrasie No: 98/09584/06

## VERKLARING WYSIGING VAN NASIONALE PAD N3 SEKSIE 8X.

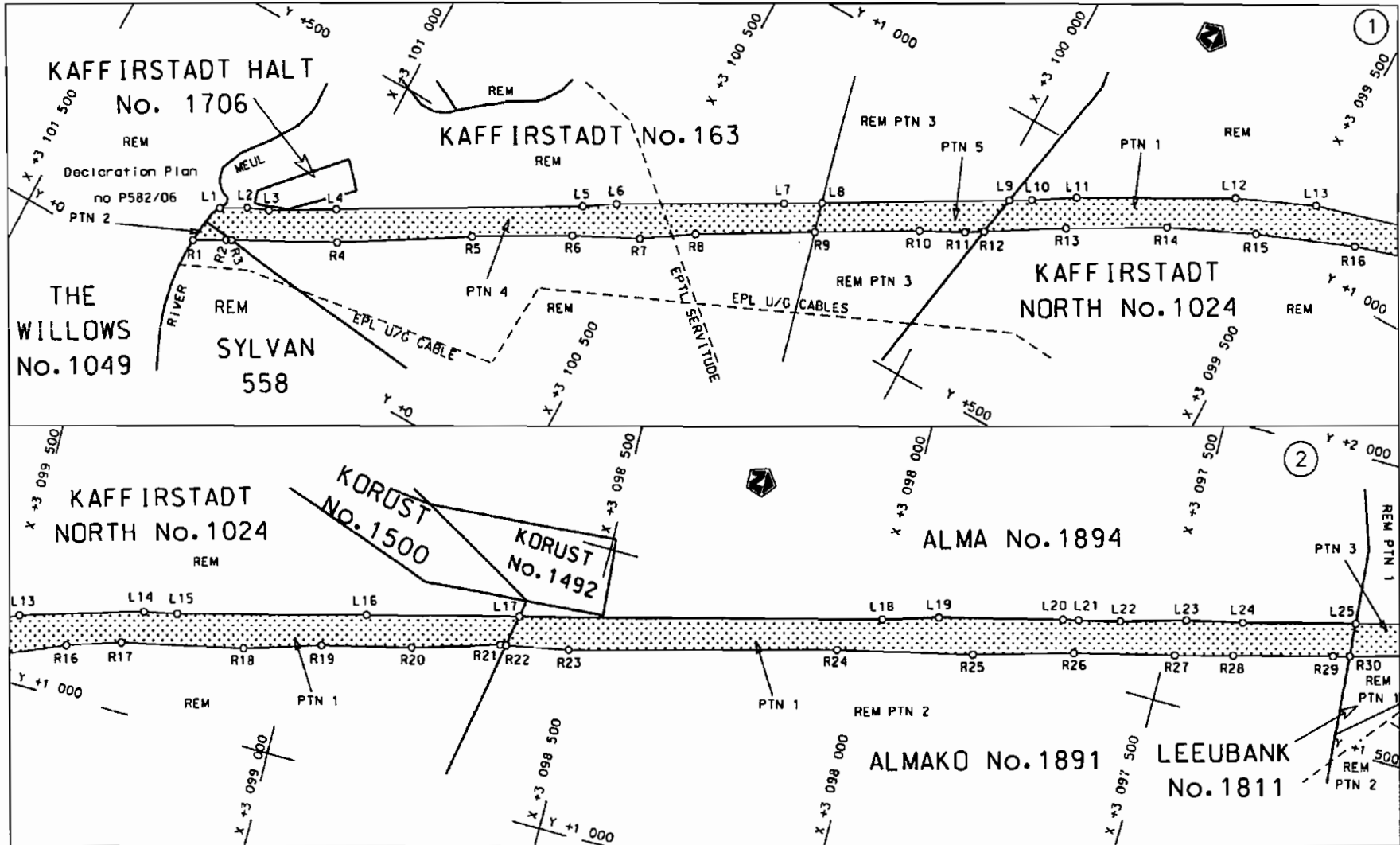
WYSIGING VAN VERKLARING NO. 61 VAN 1983

Kragtens Artikel40(1)(b) van die Suid Afrikaanse Nasionale Padagentskap Beperk en die Nasionale Paaie Wet, 1998 (Wet NO.7 van 1998), wysig ek hiermee Verklaring NO.61 van 1983, deur die gedeelte vanaf die Meul rivier (vel 6 van Plan No. P333/82) tot die gemeenskaplike grens tussen die plase Hester 1590 gedeelte 1 en Waterval 102 (vel 11 van Plan No. P333/82), te vervang met meegaande velie 1 tot 9 van Plan No. P581/06.

**(Nasionale Pad N3 Seksie 8X: Meul rivier - Warden Wissellaar)**

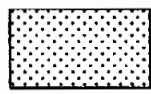
*- Radah*

**MIN TERVAN VERVOER**



Die Suid Afrikaanse Nasionale Padagentskap Beperk  
The South African National Roads Agency Limited

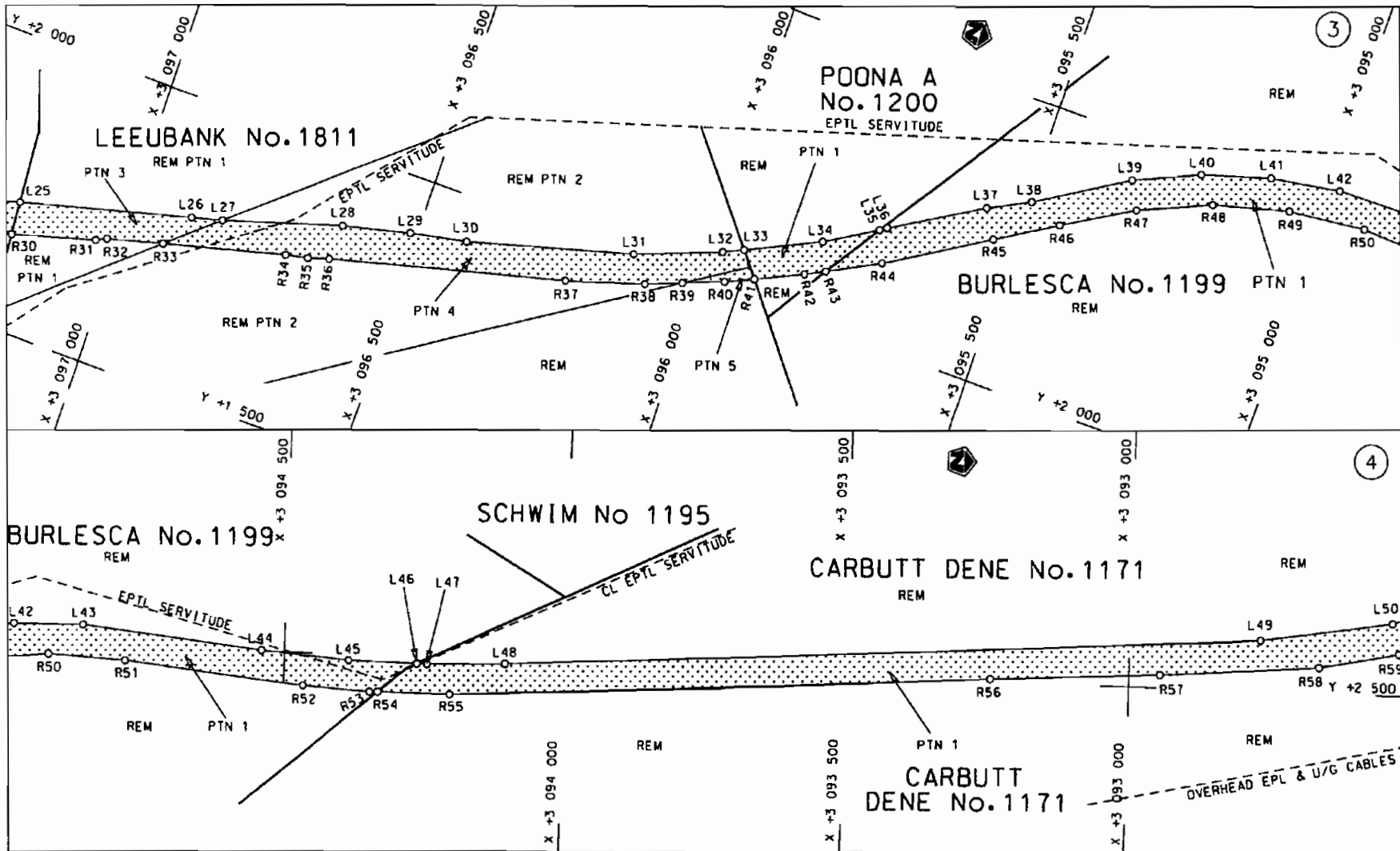
Die figuur getoon  
The figure shown

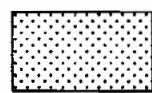


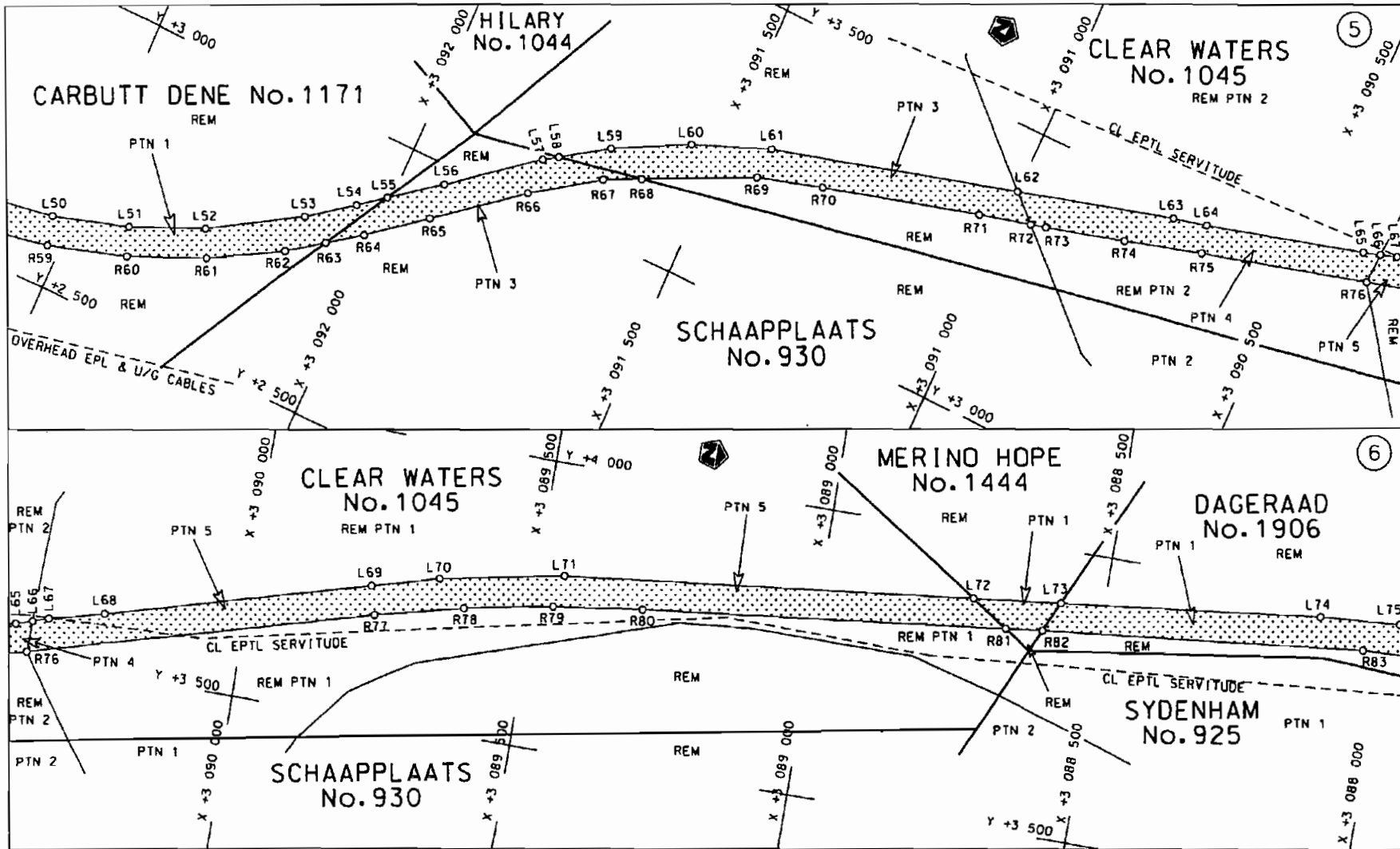
steldie padreserwe voor van 'n gedeelte  
represents the road reserve of a portion  
van Nasionale Roete N3 Sektie 8X  
of Notional Route Section

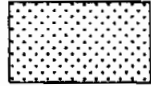
Vel Sheet 1 van 9  
Plan P581/06

D.O.9.A

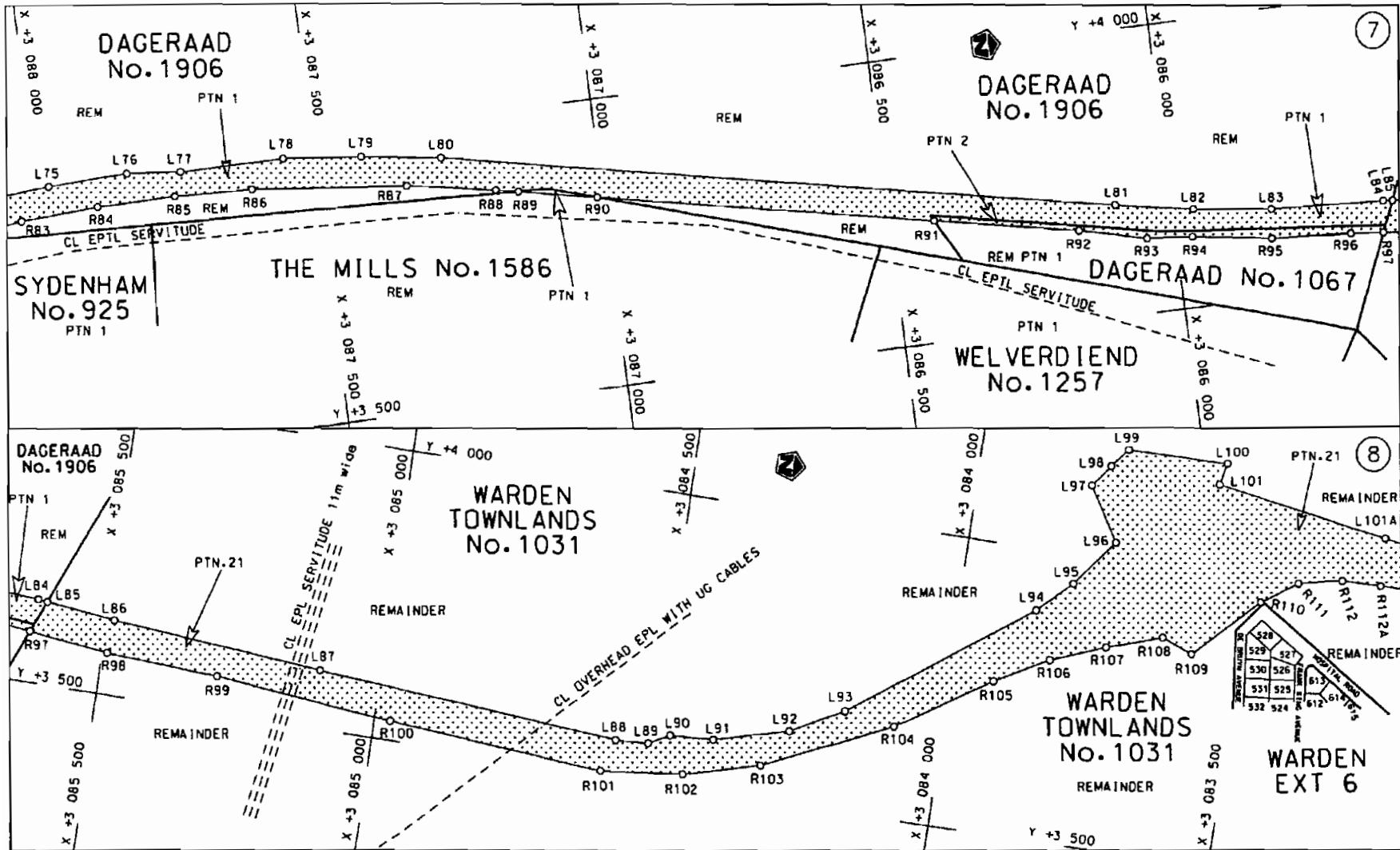


Die Suid Afrikaanse Nasionale Padogenskap Beperk	Die figuur getoon		steldie padreserwe voor van 'n gedeelte	Vel Sheet 2 van 9
The South African National Roads Agency Limited	The figure shown		represents the road reserve of a portion van Nasionale Roete N3 Seksie Section 8X	Plan P581/06



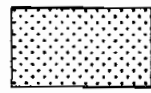
<p>Die Suid Afrikaanse Nasionale Padagentskap Beperk The South African National Roads Agency Limited</p>	<p>Die figuur getoon The figure shown</p> 	<p>steldie padreserwe voor van 'n gedeelte represents the road reserve of a portion van Nasionale Roete N3 of National Route N3</p> <p>Seksie Section 8X</p>	<p>Vel Sheet 3 van 9 of 8 Plan P581/06</p>
--	--	--	--

D.O.9.A



Die Suid Afrikaanse Nasionale Padagentskap Beperk  
The South African National Roads Agency Limited

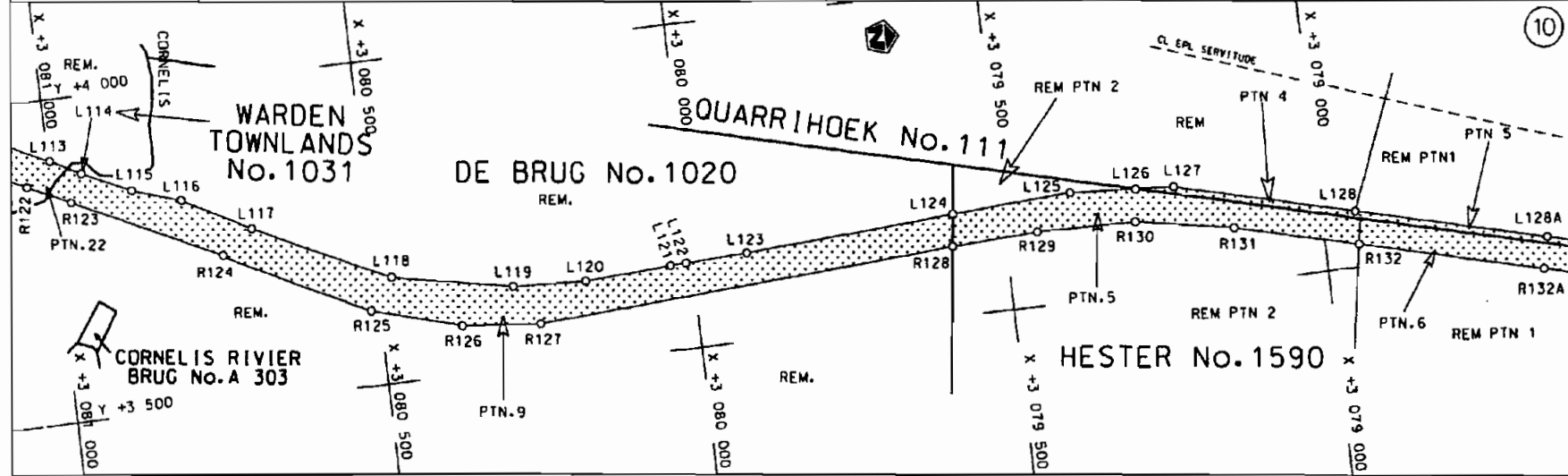
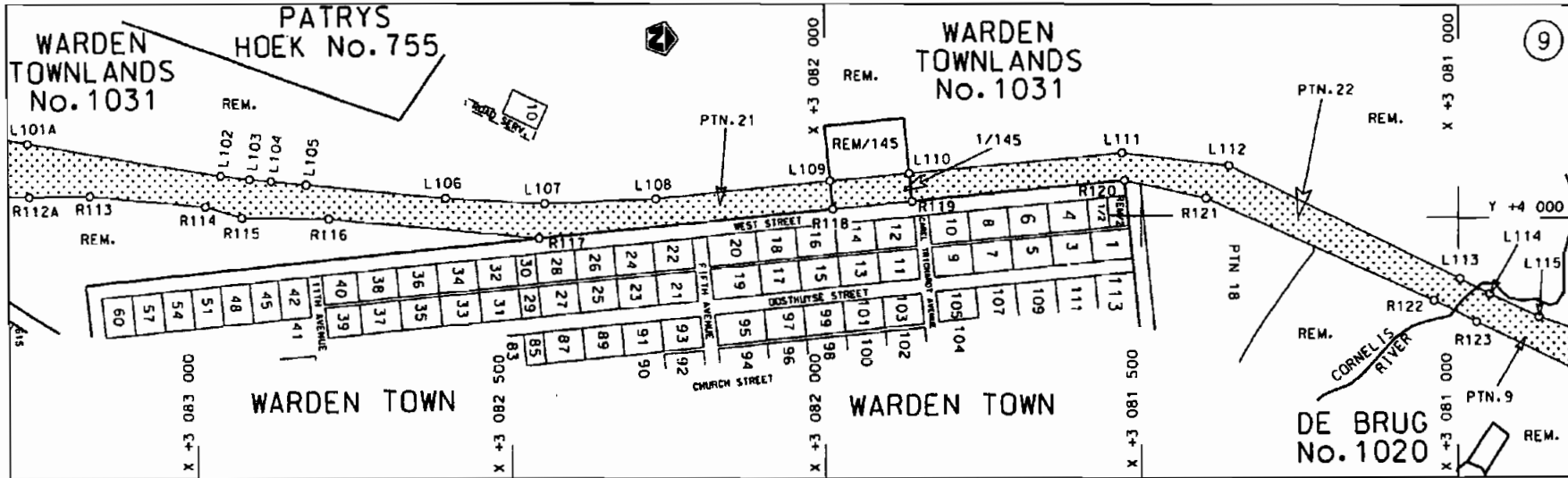
Die figuur getoon  
The figure shown




stel die padreserwe voor van 'n gedeelte  
represents the road reserve of a portion  
van Nasionale Roete N3  
of National Route N3

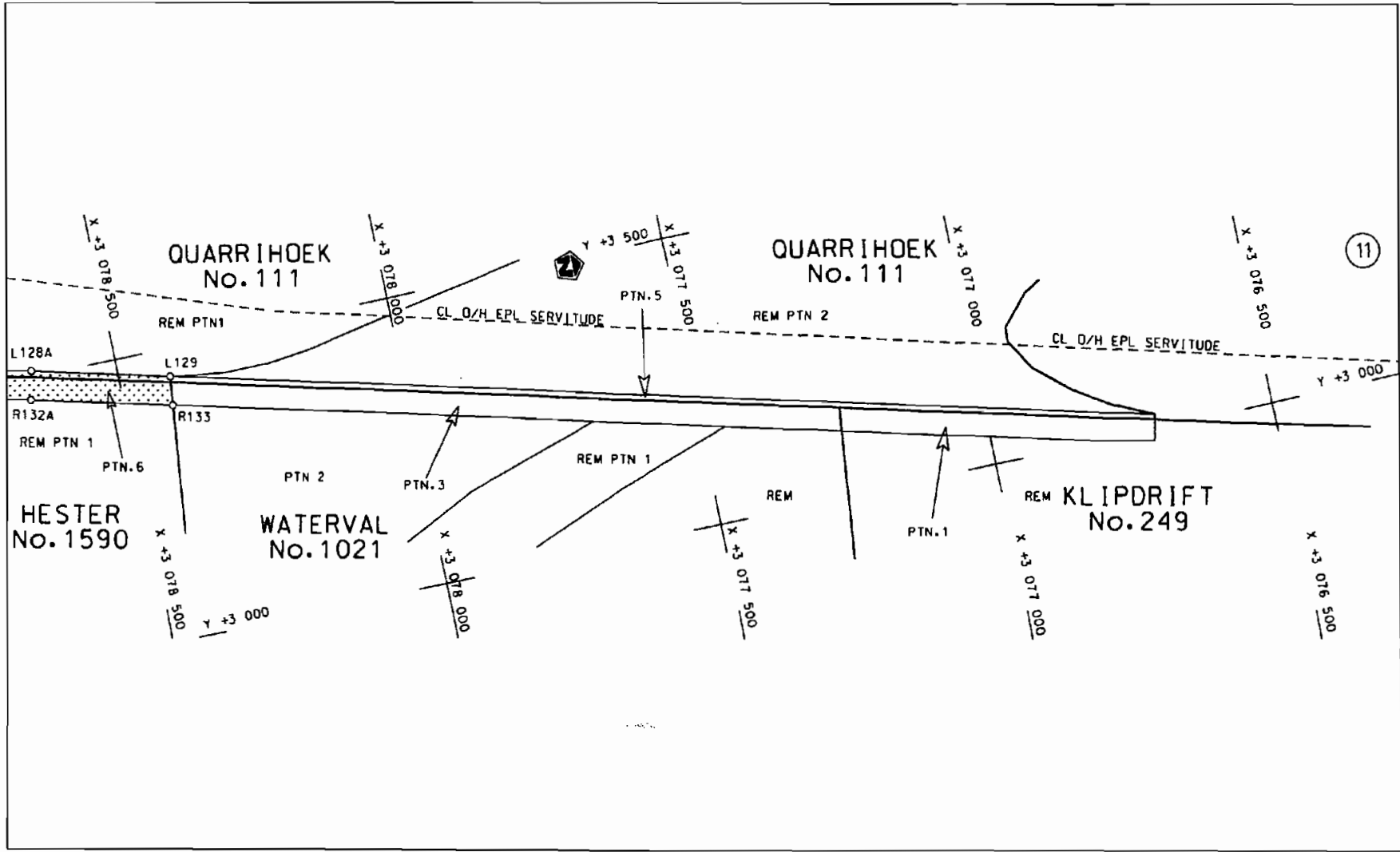
Seksie 8X  
Section 8X

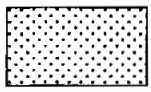
Vel Sheet 4 van 9  
Plan P581/06



<p>Die Suid Afrikaanse Nasionale Padagentskap Beperk                  The South African National Roads Agency Limited</p>	<p>Die figuur getoon                  The figure shown</p>		<p>steldie padreserwe voor van 'n gedeelte                  represents the road reserve of a portion                  van Nasionale Roete N3 Seksie Section                  of National Route N3 Section 8X</p>	<p>Vel Sheet 5 van 9                  Plon P581/06</p>
---	--	--	--	--





<p>Die Suid Afrikaanse Nasionale Padogenskap Beperk The South African National Roads Agency Limited</p>	<p>Die figuur getoon The figure shown</p>		<p>steldie padreserwe voor van 'n gedeelte represents the road reserve of a portion von Nasionale Roete N3 of National Route N3</p> <p>Seksie Section 8X</p>	<p>Vel Sheet 6 van of 9 Plan P581/06</p>
---	---	--	--	--

PADRESERWE KOORDINATE				/	ROAD RESERVE CO-ORDINATES			
LINKERKANT/LEFT HAND SIDE					REGTERKANT/RIGHT HAND SIDE			
	y	x	WG	29		y	x	
L1	154.91	3 101	193.66	R1	82.91	3 101	209.11	
L2	180.06	3 101	150.26	R2	112.43	3 101	157.31	
L3	195.78	3 101	113.15	R3	117.09	3 101	148.58	
L4	255.97	3 101	009.34	R4	206.68	3 100	980.73	
L5	476.63	3 100	628.62	R5	333.10	3 100	776.62	
L6	509.35	3 100	578.22	R6	423.39	3 100	620.86	
L7	657.18	3 100	317.15	R7	477.52	3 100	513.51	
L8	691.47	3 100	258.01	R8	533.72	3 100	430.52	
L9	857.89	3 099	970.95	R9	641.07	3 100	245.28	
L10	877.87	3 099	936.49	R10	734.29	3 100	084.43	
L11	920.52	3 099	868.76	R11	770.96	3 100	013.22	
L12	1 058.42	3 099	622.77	R12	788.84	3 099	983.90	
L13	1 116.63	3 099	492.53	R13	864.70	3 099	859.49	
L14	1 179.11	3 099	278.48	R14	954.63	3 099	703.58	
L15	1 191.32	3 099	219.67	R15	1 021.59	3 099	561.30	
L16	1 276.99	3 098	890.52	R16	1 088.07	3 099	397.90	
L17	1 345.56	3 098	627.20	R17	1 117.75	3 099	303.86	
L18	1 508.65	3 098	000.69	R18	1 164.46	3 099	088.70	
L19	1 537.85	3 097	904.40	R19	1 205.55	3 098	954.71	
L20	1 591.34	3 097	690.99	R20	1 242.98	3 098	799.10	
L21	1 597.82	3 097	663.49	R21	1 288.87	3 098	647.99	
L22	1 615.14	3 097	591.52	R22	1 290.67	3 098	637.77	
L23	1 647.65	3 097	478.30	R23	1 312.54	3 098	527.80	
L24	1 669.94	3 097	380.77	R24	1 436.39	3 098	064.00	
L25	1 720.35	3 097	187.32	R25	1 491.00	3 097	830.20	
L26	1 797.28	3 096	889.08	R26	1 540.21	3 097	657.02	
L27	1 811.04	3 096	836.32	R27	1 583.67	3 097	482.33	
L28	1 875.20	3 096	628.33	R28	1 610.22	3 097	382.61	
L29	1 903.51	3 096	511.70	R29	1 655.17	3 097	211.61	
L30	1 922.92	3 096	413.40	R30	1 663.15	3 097	182.93	
L31	2 003.92	3 096	126.67	R31	1 703.40	3 097	038.27	
L32	2 060.46	3 095	978.85	R32	1 712.30	3 097	019.91	
L33	2 076.62	3 095	944.18	R33	1 737.53	3 096	923.01	
L34	2 137.00	3 095	816.58	R34	1 792.91	3 096	710.26	
L35	2 190.57	3 095	728.13	R35	1 801.05	3 096	671.03	
L36	2 198.54	3 095	716.64	R36	1 813.09	3 096	632.81	
L37	2 290.63	3 095	562.92	R37	1 919.10	3 096	225.68	
L38	2 327.30	3 095	491.54	R38	1 961.87	3 096	090.83	
L39	2 423.26	3 095	337.33	R39	1 985.91	3 096	028.79	
L40	2 474.05	3 095	224.68	R40	2 013.01	3 095	958.84	
L41	2 509.66	3 095	106.31	R41	2 035.03	3 095	910.34	
L42	2 529.52	3 094	984.32	R42	2 073.05	3 095	829.21	
L43	2 531.84	3 094	860.91	R43	2 090.57	3 095	794.46	
L44	2 501.58	3 094	540.75	R44	2 137.90	3 095	704.98	
L45	2 490.50	3 094	382.58	R45	2 242.84	3 095	533.67	
L46	2 489.40	3 094	261.91	R46	2 305.53	3 095	431.34	
L47	2 489.24	3 094	244.04	R47	2 376.48	3 095	312.42	
L48	2 495.85	3 094	105.44	R48	2 431.28	3 095	187.97	
L49	2 586.28	3 092	768.44	R49	2 465.94	3 095	056.31	
L50	2 621.08	3 092	535.84	R50	2 480.38	3 094	921.09	
L51	2 661.73	3 092	404.86	R51	2 474.37	3 094	784.45	
				Vel	7	Van	9	P581/06
				Sheet		of		

PADRESERWE KOORDINATE				ROAD RESERVE CO-ORDINATES			
LINKERKANT/LEFT HAND SIDE				REGTERKANT/RIGHT HAND SIDE			
	y	X	WG 29		y	X	
L52	2 716.76	3 092	279.27	R52	2 444.23	3 094	465.22
L53	2 811.44	3 092	125.85	R53	2 437.87	3 094	344.10
L54	2 868.96	3 092	051.37	R54	2 438.62	3 094	329.73
L55	2 903.28	3 092	007.54	R55	2 439.18	3 094	202.64
L56	2 967.61	3 091	925.42	R56	2 504.00	3 093	243.99
L57	3 082.06	3 091	785.42	R57	2 522.25	3 092	944.54
L58	3 098.45	3 091	761.36	R58	2 543.87	3 092	663.67
L59	3 151.10	3 091	684.10	R59	2 570.64	3 092	523.25
L60	3 218.63	3 091	558.03	R60	2 612.98	3 092	386.70
L61	3 271.23	3 091	425.00	R61	2 670.39	3 092	255.78
L62	3 390.91	3 090	999.35	R62	2 742.13	3 092	132.11
L63	3 466.45	3 090	730.70	R63	2 785.43	3 092	073.58
L64	3 480.67	3 090	672.31	R64	2 826.87	3 092	017.54
L65	3 555.93	3 090	402.68	R65	2 902.04	3 091	924.00
L66	3 565.38	3 090	373.50	R66	3 016.39	3 091	784.99
L67	3 574.43	3 090	345.57	R67	3 096.39	3 091	673.61
L68	3 598.91	3 090	248.58	R68	3 126.29	3 091	611.78
L69	3 727.94	3 089	786.27	R69	3 215.57	3 091	427.20
L70	3 760.46	3 089	669.71	R70	3 249.78	3 091	313.87
L71	3 804.32	3 089	452.14	R71	3 325.00	3 091	044.22
L72	3 890.85	3 088	730.28	R72	3 348.47	3 090	954.24
L73	3 908.53	3 088	576.68	R73	3 355.30	3 090	928.04
L74	3 964.01	3 088	120.01	R74	3 392.92	3 090	793.22
L75	3 974.80	3 087	979.30	R75	3 432.48	3 090	658.94
L76	3 979.07	3 087	838.21	R76	3 511.67	3 090	375.28
L77	3 969.55	3 087	742.42	R77	3 679.78	3 089	772.84
L78	3 968.70	3 087	556.18	R78	3 718.53	3 089	618.95
L79	3 953.74	3 087	415.76	R79	3 749.13	3 089	463.28
L80	3 933.42	3 087	276.17	R80	3 771.48	3 089	306.06
L81	3 697.38	3 086	098.91	R81	3 849.05	3 088	665.53
L82	3 673.13	3 085	962.18	R82	3 856.78	3 088	600.89
L83	3 655.22	3 085	824.49	R83	3 920.18	3 088	035.98
L84	3 643.71	3 085	625.60	R84	3 927.04	3 087	897.29
L85	3 641.87	3 085	609.10	R85	3 927.73	3 0B7	758.44
L86	3 628.13	3 085	486.37	R86	3 922.16	3 087	619.70
L87	3 599.28	3 085	107.46	R87	3 892.53	3 087	343.61
L8B	3 562.66	3 084	571.24	R88	3 864.62	3 087	187.23
L89	3 565.83	3 084	512.97	R89	3 856.62	3 087	147.32
L90	3 584.89	3 084	476.29	R90	3 829.04	3 087	009.77
L91	3 589.93	3 084	399.13	R91	3 710.96	3 086	420.83
L92	3 624.15	3 084	267.97	R92	3 660.18	3 086	167.54
L93	3 673.39	3 084	174.21	R93	3 631.16	3 086	050.41
L94	3 894.19	3 083	864.07	R94	3 623.76	3 085	969.78
L95	3 949.68	3 083	805.56	R95	3 602.54	3 085	830.13
L96	4 030.19	3 083	741.58	R96	3 593.39	3 085	689.60
L97	4 123.75	3 083	797.46	R97	3 586.78	3 085	632.66
L98	4 161.40	3 083	768.90	R98	3 570.29	3 0B5	490.79
L99	4 195.07	3 083	742.61	R99	3 561.08	3 085	290.90
LI00	4 197.09	3 083	565.68	RI00	3 532.85	3 084	972.11
LI01	4 159.19	3 083	574.05	RI01	3 505.18	3 084	590.22
LI02	4 057.94	3 082	961.81	RI02	3 521.63	3 084	444.38

Vel	8	Van	9	P581/06
Sheet		of		

PADRESERWE KOORDINATE				/	ROAD RESERVE CO-ORDINATES			
LINKERKANT/LEFT HAND SIDE					REGTERKANT/RIGHT HAND SIDE			
	Y	X	WG	29	y	X		
L103	4 053.00	3 082	915.50	R103	3 558.02	3 084	310.15	
L104	4 049.73	3 082	880.11	R104	3 660.07	3 084	084.61	
L105	4 044.55	3 082	822.64	R105	3 763.67	3 083	921.58	
L106	4 023.44	3 082	603.69	R106	3 814.18	3 083	828.08	
L107	4 015.29	3 082	446.84	R107	3 850.19	3 083	733.08	
L108	4 023.64	3 082	269.25	R108	3 881.68	3 083	636.07	
L109	4 052.03	3 081	992.08	R109	3 861.17	3 083	582.05	
L110	4 064.64	3 081	866.80	R110	3 967.30	3 083	472.59	
L111	4 098.50	3 081	529.98	R111	4 009.18	3 083	411.54	
L112	4 079.50	3 081	361.69	R112	4 025.65	3 083	335.03	
L113	3 903.68	3 080	997.17	R113	4 027.18	3 083	170.53	
L114	3 879.14	3 080	949.57	R114	4 010.38	3 082	986.64	
L115	3 843.66	3 080	872.37	R115	3 993.19	3 082	928.03	
L116	3 818.76	3 080	796.35	R116	3 991.24	3 082	787.59	
L117	3 763.00	3 080	689.23	R117	3 960.83	3 082	455.89	
L118	3 662.06	3 080	475.42	R118	4 008.04	3 081	987.64	
L119	3 626.29	3 080	287.25	R119	4 020.67	3 081	862.37	
L120	3 621.61	3 080	171.38	R120	4 054.94	3 081	526.01	
L121	3 629.64	3 080	034.01	R121	4 028.01	3 081	397.61	
L122	3 631.12	3 080	009.36	R122	3 868.46	3 081	037.70	
L123	3 635.41	3 079	911.76	R123	3 835.80	3 080	970.44	
L124	3 655.66	3 079	578.83	R124	3 726.92	3 080	739.66	
L125	3 667.07	3 079	391.18	R125	3 614.98	3 080	513.63	
L126	3 660.40	3 079	287.33	R126	3 575.82	3 080	374.02	
L127	3 656.54	3 079	227.23	R127	3 564.73	3 080	250.28	
L128	3 586.13	3 078	946.82	R128	3 606.71	3 079	585.26	
L129	3 451.54	3 078	409.42	R129	3 613.44	3 079	449.57	
				R130	3 610.68	3 079	293.71	
				R131	3 583.17	3 079	140.02	
				R132	3 535.02	3 078	946.75	
				R133	3 402.51	3 078	414.85	