

CONTENTS**INHOUD**

<i>No.</i>	<i>Page No.</i>	<i>Gazette No.</i>	<i>No.</i>	<i>Bladsy No.</i>	<i>Koerant No.</i>
GOVERNMENT NOTICE			GOEWERMENTSKENNISGEWING		
Transport, Department of			Vervaer, Departement van		
<i>Government Notice</i>			<i>Goewermentskennisgewing</i>		
752		South African National Roads Agency Limited and the National Roads Act (7/1998): The South African National Roads Agency Limited: Declaration amendment of National Road N4 Section 15: Amendment of Declaration NO.1010 of 1998	3	30201	
					752 Suid-Afrikaanse Nasionale Padagentskap Beperk en die Nasionale Paale Wet (7/1998): Die Suid-Afrikaanse Nasionale Padagentskap Beperk: Verklaring wysiging van Nasionale Pad N4 Seksie 15: Wysiging van Verklaring No. 1010 van 1998
				4	30201

**GOVERNMENT NOTICE
GOEWERMENTSKENNISGEWING**

**DEPARTMENT OF TRANSPORT
DEPARTEMENT VAN VERVOER**

No. 752

24 August 2007

**THE SOUTH AFRICAN NATIONAL ROADS
AGENCY LIMITED**

Registration No: 98/09584/06

DECLARATION AMENDMENT OF NATIONAL ROAD ~~N4~~ SECTION 15

AMENDMENT OF DECLARATION No. 1010 OF 1998

By virtue of section 40 (1)(b) of the South African National Roads Agency Limited and the National Roads Act, 1998 (Act NO.7 of 1998), I hereby amend Declaration NO.1010 of 1998, by substituting the descriptive section from the farm Sterkstroom 4.11 - JP up to the farm Kameeldoorn 271 - JP with the subjoined sheets 1 to 18 of Plan P578/06.

(National Road N4 Section 15: Sterkstroom 411 - JP to Kameeldoorn 271 - JP)



HST

No. 752

24 Augustus 2007

DIE SUID-AFRIKAANSE NASIONALE PADAGENTSKAPBEPERK

Registrasie No: 98/09584/06

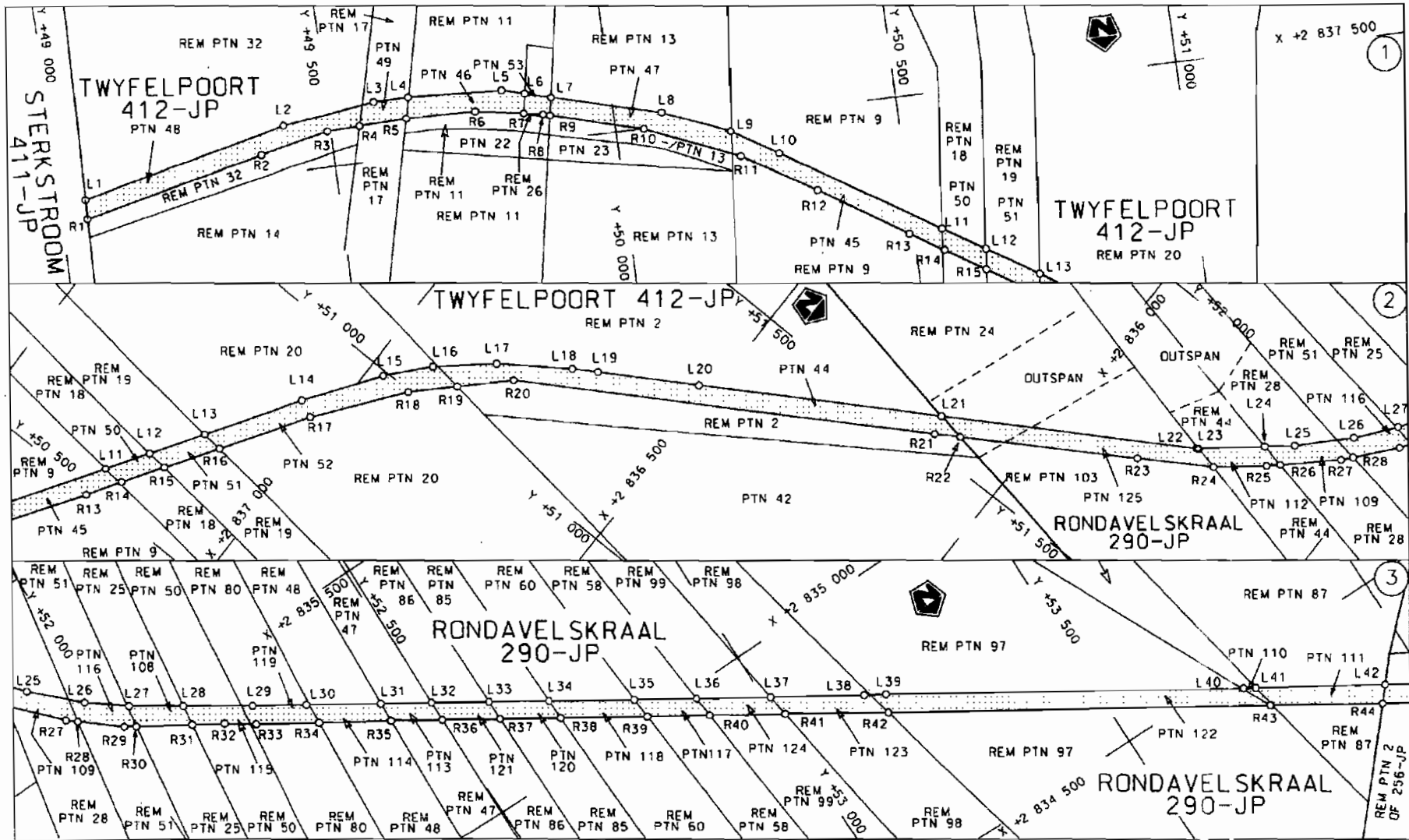
VERKLARING WYSIGING VAN NASIONALE PAD N4 SEKSIE 15.

WYSIGING VAN VERKLARING NO. 1010 VAN 1998

Kraglens Artikel40(1)(b) van die Suid Afrikaanse Nasionale Padagentskap Beperk en die Nasionale Paaie Wet, 1998 (Wel NO.7 van 1998), wysig ek hiermee Verklaring No.1010 van 1998, deur die beskrywende gedeelte vanaf die plaas Sterkslroom 411 - JP tot die plaas Kameeldoorn 271 - JP, te vervang met meegaande velie 1 l0l 18 van Plan No. P578/06.

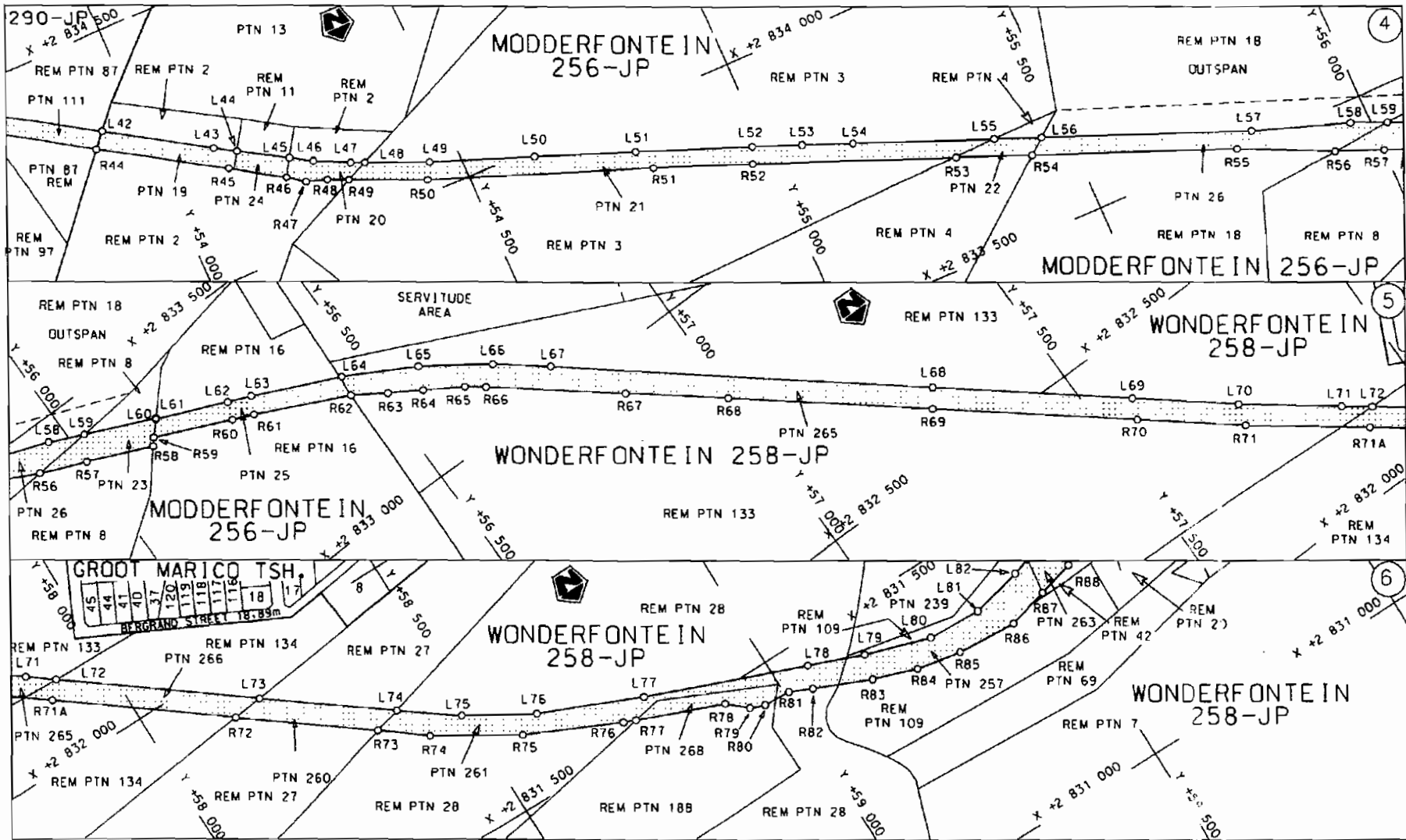
(Nasionale Pad N4 Seksie 15: Sterkstroom 411 - JP tot Kameeldoorn 271 - JP)

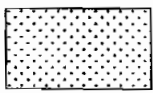

MINISTERVAN VERVOER

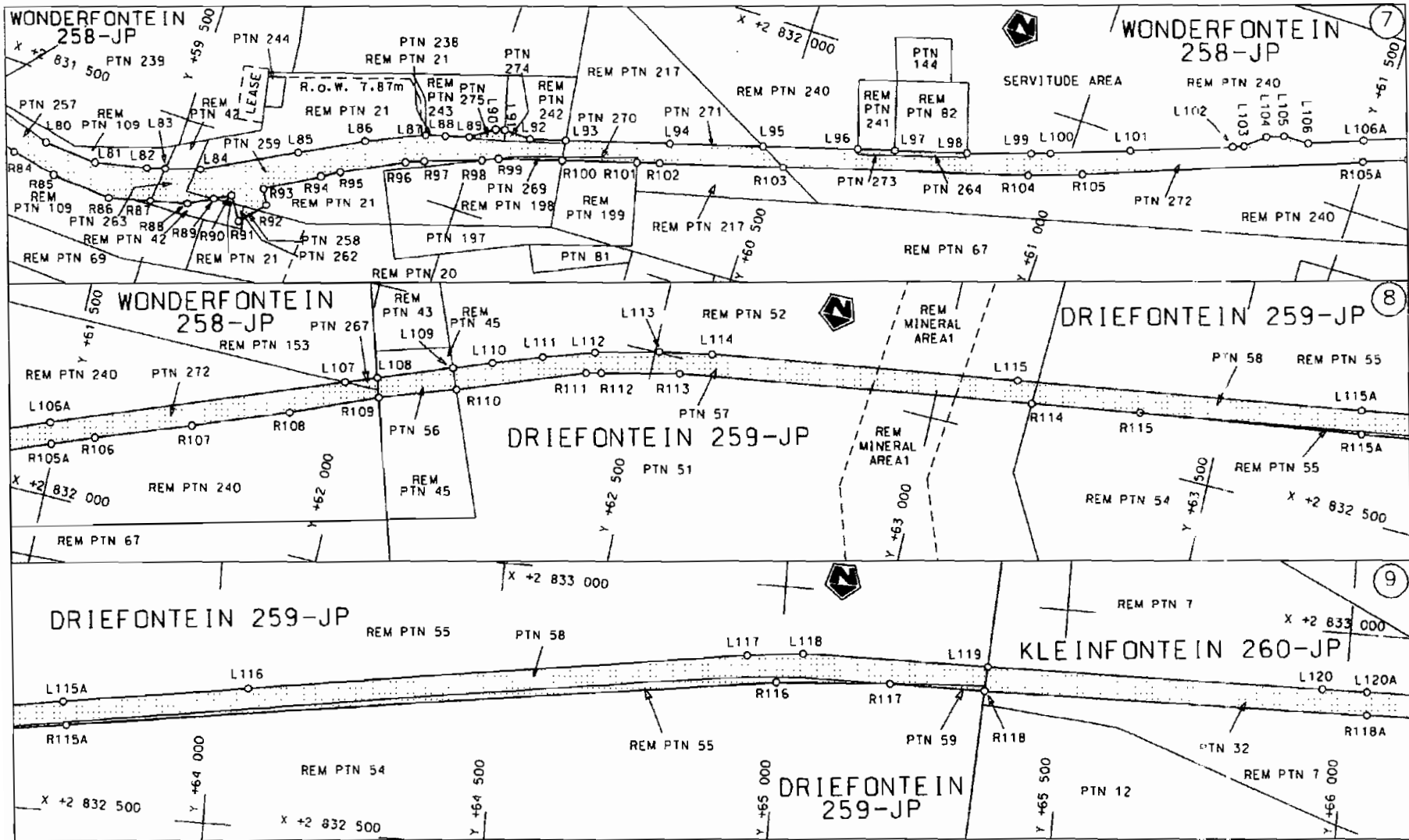


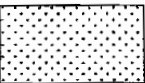
Die Suid Afrikaanse Nasionale Padogenskap Beperk	Die figuur getoon	steldie padreserwe voor van 'n gedeelte	Vel Sheet 1 van 18
The South African National Roads Agency Limited	The figure shown	represents the road reserve of a portion van Nasionale Roete N4 Seksie Section 15	Plan P578/06

D.O.G.A

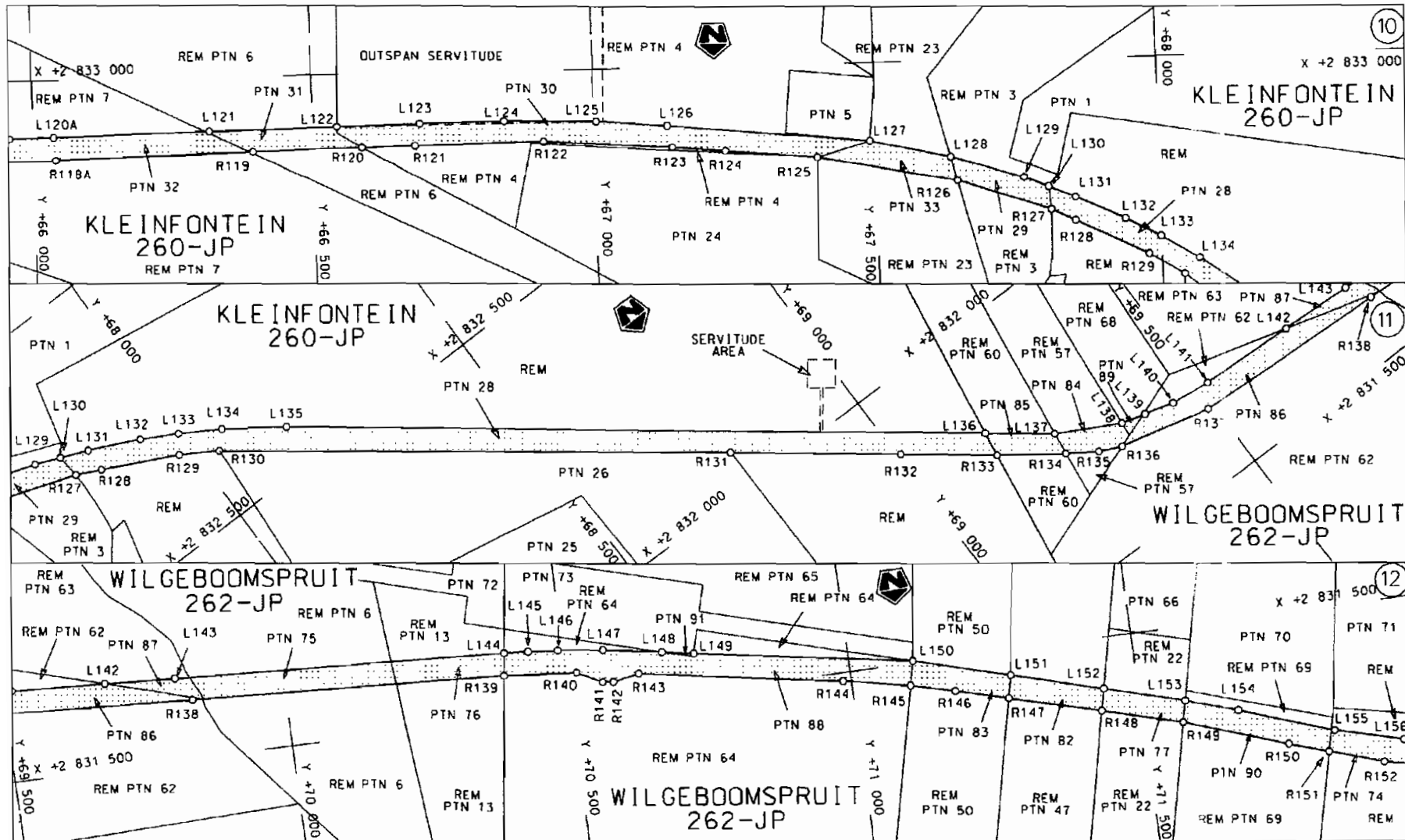



<p>Die Suid Afrikaanse Nasionale Padagentskap Beperk The South African National Roads Agency Limited</p>	<p>Die figuur getoon The figure shown</p> <div style="text-align: center;">  </div>	<p>steldie padreserve voor van 'n gedeelte represents the road reserve of a portion van Nasionale Roete N4 of National Route</p> <p style="text-align: right;">Seksie Section 15</p>	<p>Vel Sheet 2 van of 18 Plan P578/06</p>
--	---	--	---

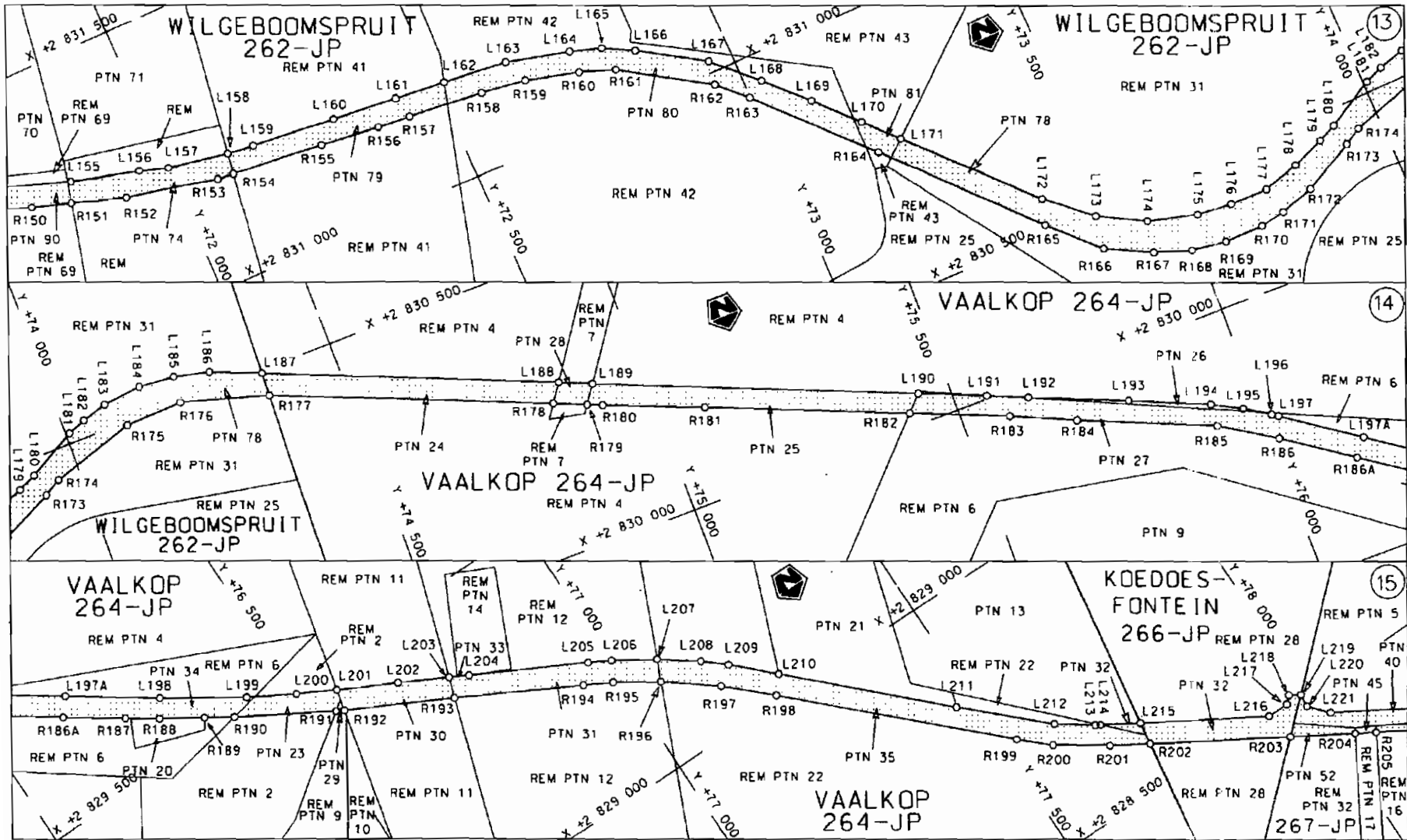


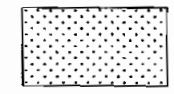
Die Suid Afrikaanse Nasionale Padagentskap Beperk The South African National Roads Agency Limited	Die figuur getoon The figure shown	 steldie padreserwe voor van 'n gedeelte represents the road reserve of a portion van Nasionale Roete N4 Seksie 15 of National Route N4 Section 15	Vel Sheet 3 van 18 Plan P578/06
--	---------------------------------------	---	------------------------------------

D.O.9.A

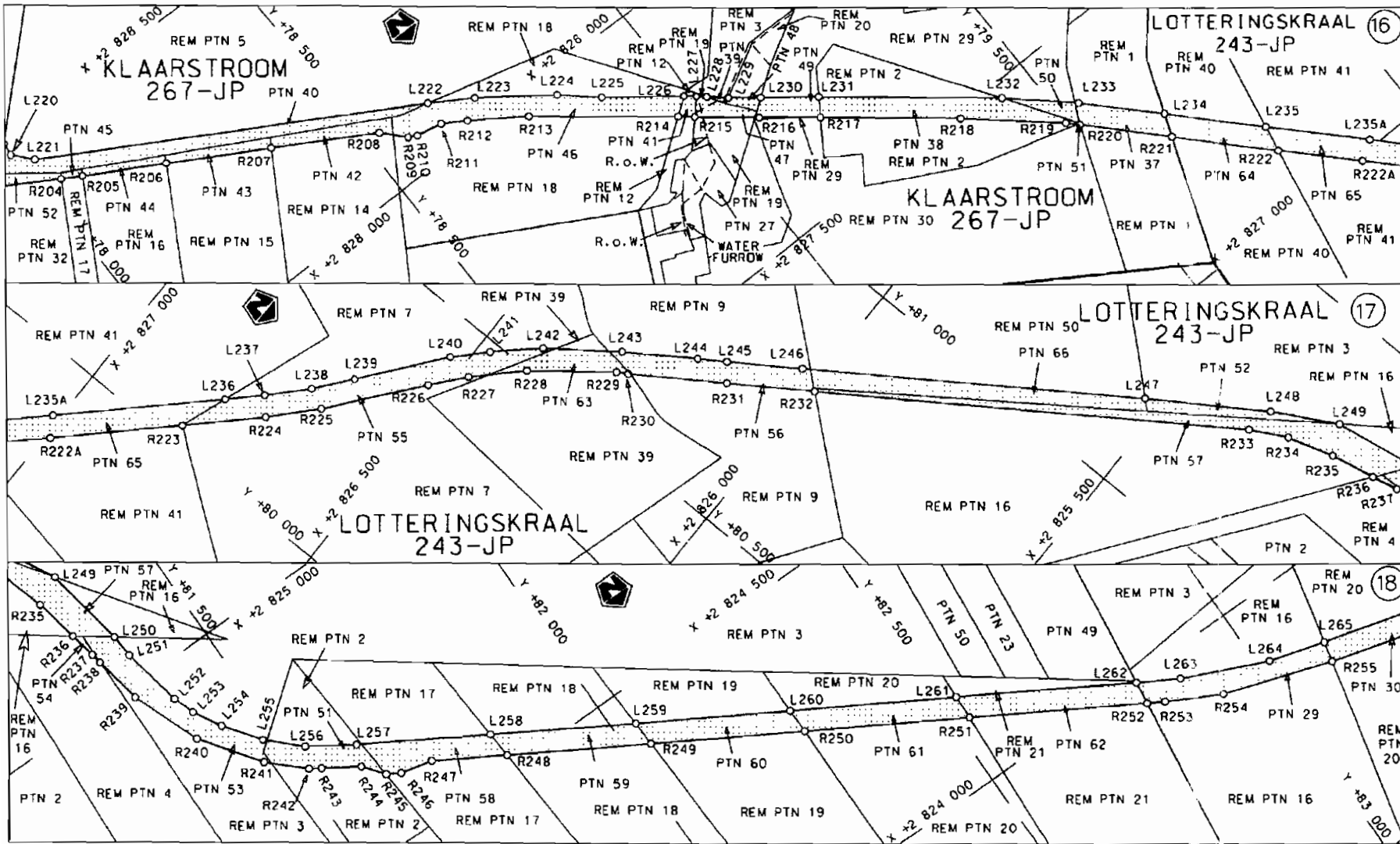



<p>Die Suid Afrikaanse Nasionale Padagentskap Beperk The South African National Roads Agency Limited</p>	<p>Die figuur getoon The figure shown</p>		<p>steldie padreserwe voor van 'n gedeelte represents the road reserve of a portion van Nasionale Roete N4 Seksie 15 of National Route Section</p>	<p>Vel van Sheet 4 of 18 Plan P578/06</p>
--	---	--	--	---

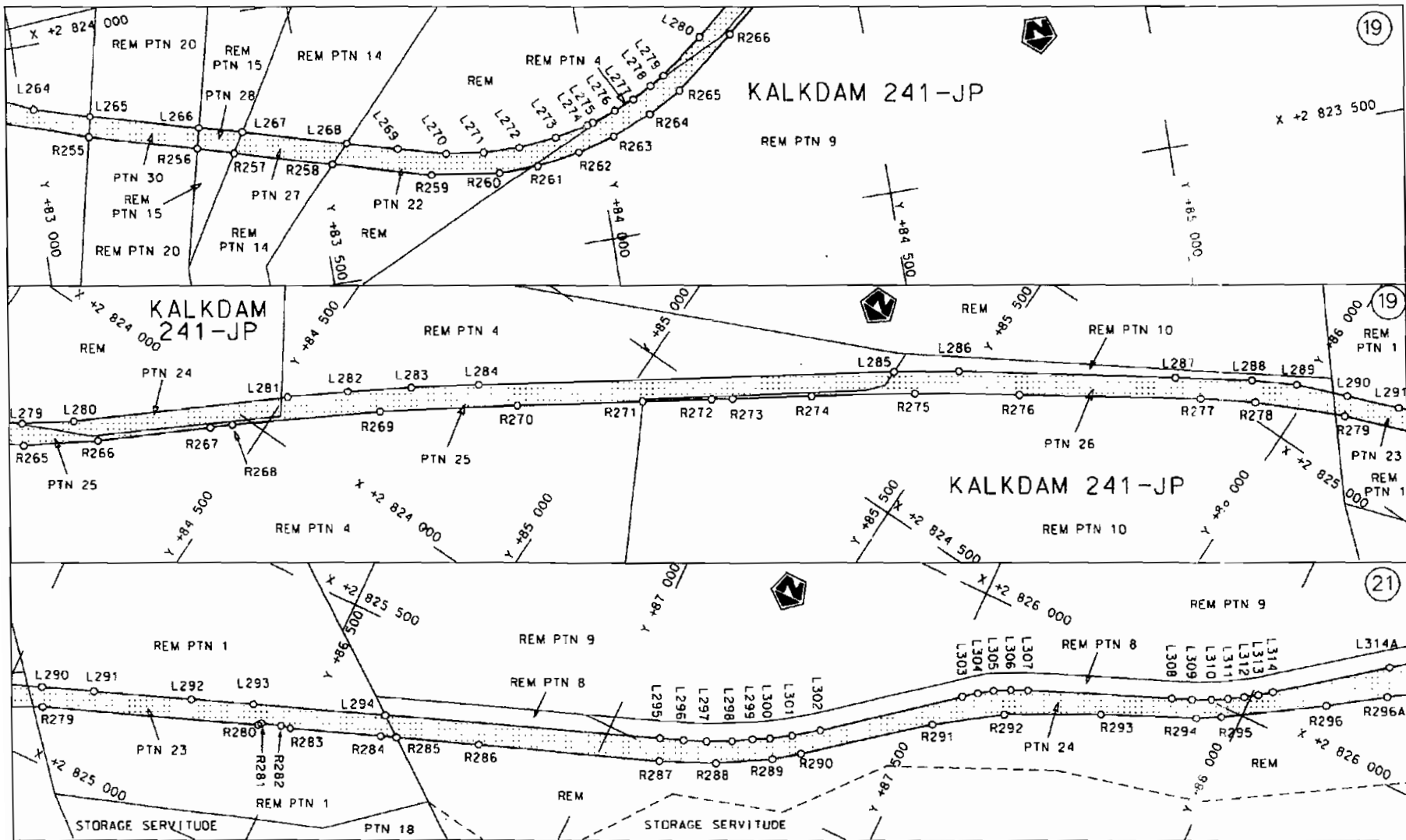


<p>Die Suid Afrikaanse Nasionale Padogenskop Beperk The South African National Roads Agency Limited</p>	<p>Die figuur getoon The figure shown</p> 	<p>steldie padreserwe voor van 'n gedeelte represents the road reserve of a portion van Nasionale Roete N4 Seksie of National Route Section 15</p>	<p>Vel Sheet 5 van of 18 Plan P578/06</p>
---	--	--	---

D.O.9.A

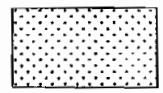


<p>Die Suid Afrikaanse Nasionale Padagentskap Beperk The South African National Roads Agency Limited</p>	<p>Die figuur getoon The figure shown</p>		<p>steldie padreserwe voor van 'n gedeelte represents the road reserve of a portion von Nasionale Roete N4 of National Route Section 15</p>	<p>Vel Sheet 6 van of 18 Plan P578/06</p>
--	---	--	---	---



Die Suid Afrikaanse Nasionale Padagentskap Beperk
The South African National Roads Agency Limited

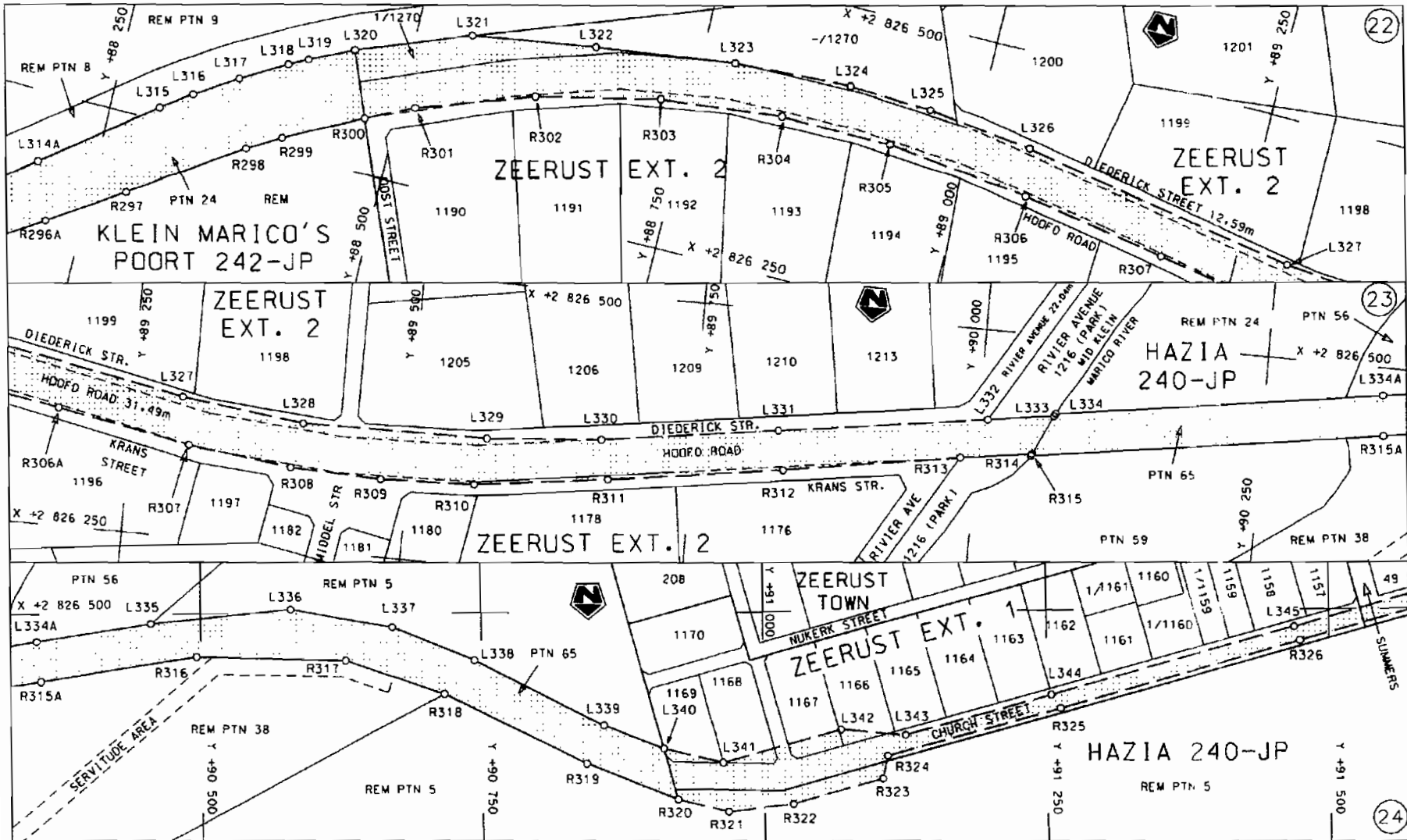
Die figuur getoon
The figure shown



steldie padreserwe voor van 'n gedeelte
represents the road reserve of a portion
van Nasionale Roete N4
of National Route Section 15

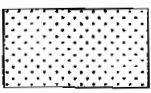
Vel Sheet 7 van of 18
Plan P578/06

D.O.G.A



Die Suid Afrikaanse Nasionale Padagentskap Beperk
The South African National Roads Agency Limited

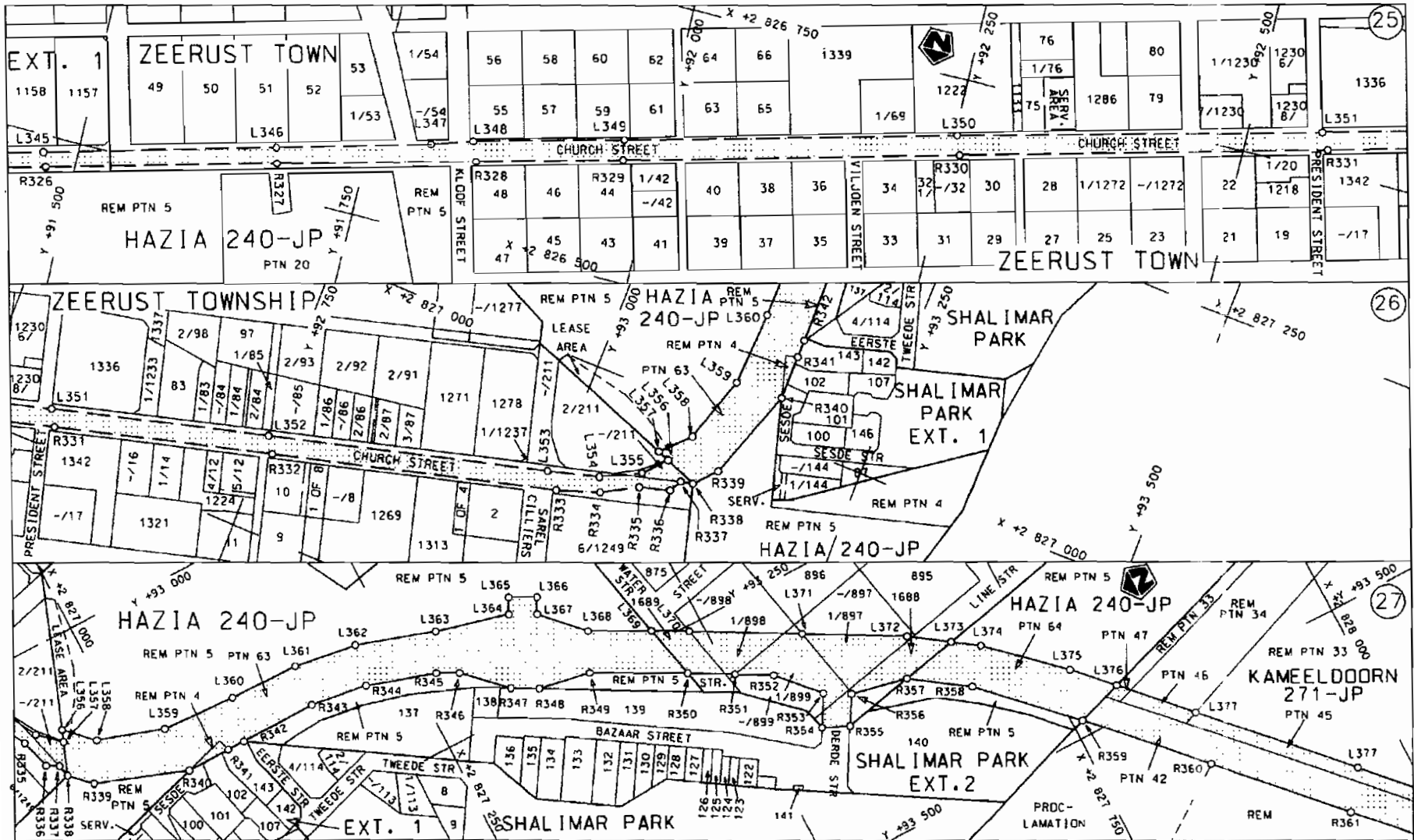
Die figuur getoon
The figure shown



steldie padreserwe voor van 'n gedeelte
represents the road reserve of a portion
van Nasionale Roete N4
of National Route N4

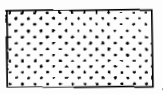
Seksie Section 15

Vel Sheet 8 van of 18
Plan P578/06



Die Suid Afrikaanse Nasionale Padagentskap Beperk
The South African National Roads Agency Limited

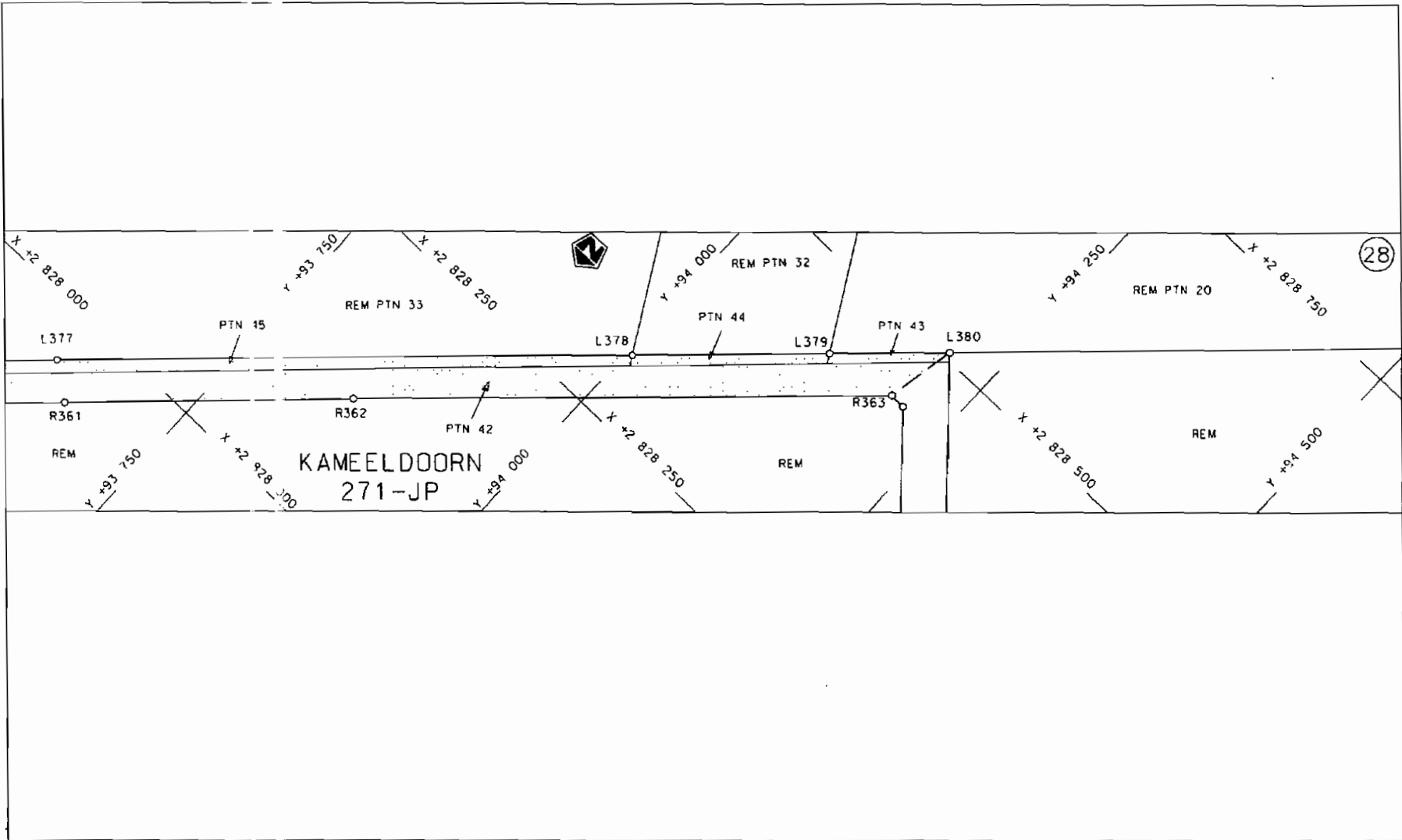
Die figuur getoon
The figure shown



steldie podreserwe voor van 'n gedeelte
represents the road reserve of a portion
van Nasionale Roete N4 Sektie
of National Route N4 Section

15

Vel Sheet 9 van 18
Plan P578/06



<p>Die Suid Afrikaanse Nasionale Padagentskap Beperk The South African National Roads Agency Limited</p>	<p>Die figuur getoon The figure shown</p>		<p>steldie padreserwe voor van 'n gedeelte represents the road reserve of a portion van Nasionale Roete N4 Seksie of National Route of National Route Section 15</p>	<p>Vel Sheet 10 van of 18 Plan P578/06</p>
--	---	--	--	--

PADRESERWE KOORDINATE / ROAD RESERVE CO-ORDINATES

L1NKERKANT/LEFT HAND SIDE			REGTERKANT/RIGHT HAND SIDE		
	Y	X	WG27°	Y	X
L1	49047.350	2837497.020	R1	49046.460	2 837 462.430
L2	49418.030	2 837 583.500	R2	49370.190	2837536.750
L3	49582.230	2837605.300	R3	49493.990	2 837 563.690
L4	49644.200	2 837 606.200	R4	49551.860	2 837 565.930
L5	49809.740	2837597.980	R5	49635.990	2837568.860
L6	49849,250	2837587.410	R6	49758.800	2837566.430
L7	49894.450	2 837 575.330	R7	49842.770	2837552.480
L8	50084.470	2837524.770	R8	49876.590	2 837 546.860
L9	50202.010	2837476.210	R9	49888.570	2 837 543.600
L10	50282.720	2 837 425.900	R10	50049.580	2837499.300
L11	50550.350	2837257.170	R11	50214.600	2 837 429.880
L12	50621.970	2837212.280	R12	50341.720	2 837 352.240
L13	50710.290	2 837 156.910	R13	50492.170	2 837254.910
L14	50867.680	2 837 057.360	R14	50549.700	2837219.140
L15	50992.050	2 836 972.480	R15	50618.110	2 837 176.270
L16	51 059.630	2836913.720	R16	50706.410	2837120.760
L17	51 134.480	2836829.500	R17	50854.200	2837027.760
L18	51 211.390	2836720.110	R18	50996.760	2836919.880
L19	51 235.780	2836681.720	R19	51 059.240	2836858.410
L20	51 328.920	2 836 528.400	R20	51 130.160	2 836 788.290
L21	51556.730	2836 158.910	R21	51524.220	2 836 148.450
L22	51794.488	2835772.161	R22	51 547.930	2836110.170
L23	51796.330	2 835 769.670	R23	51 714.660	2 835 842.670
L24	51872.240	2835681.120	R24	51 786.500	2 835 728.650
L25	51 906.680	2835641.080	R25	51 846.750	2 835 656.950
L26	51 983.120	2835568.510	R26	51 863.420	2835639.520
L27	52046.970	2835519.390	R27	51 937.710	2 835 561.210
L28	52127.400	2835466.780	R28	51954.410	2 835 547.450
L29	52230.840	2835399.360	R29	52019.200	2 835 494.370
L30	52314.620	2835347.100	R30	52038.090	2835482.740
L31	52425.650	2835277.060	R31	52122.580	2835431.190
L32	52501.500	2835229.470	R32	52171.750	2835401.190
L33	52587.420	2 835 175.500	R33	52218.760	2835369.140
L34	52677.130	2835119.200	R34	52316.020	2 835 308.980
L35	52805.240	2 835 038.930	R35	52423.950	2 835 242.020
L36	52898.240	2834 980.750	R36	52500.730	2835194.190
L37	53010.710	2 834 910.440	R37	52587.380	2835139.630
L38	53151.890	2 834 822.280	R38	52678.110	2 835 083.000
L39	53184.800	2 834 802.910	R39	52808.030	2 835 001.970
L40	53720.060	2834467.500	R40	52901.710	2 834 943.500
L41	53738.560	2 834455,920	R41	53016.320	2834871.760
L42	53932.610	2 834 336.280	R42	53170.820	2834774.020
L43	54102.730	2834229.310	R43	53743.020	2834416.500
L44	54138.700	2834207.700	R44	53910.200	2 834 311.100
L45	54219.760	2834159.220	R45	54112.500	2 834 185.790
L46	54256.850	2834137.070	R46	54200.550	2 834 129.490
L47	54318.520	2834107.110	R47	54229.540	2834107.920
L48	54341.850	2834097.040	R48	54265.950	2834096.310
L49	54446.810	2 834 051.980	R49	54303.010	2 834 079.870
L50	54620.600	2 833 986.690	R50	54430.670	2834024.00
L51	54788.890	2 833 922.620	R51	54805.360	2833883.780

Vel	11	Van	18	<i>P578/06</i>
Sheet		of		

PADRESERWE KOORDINATE / ROAD RESERVE CO-ORDINATES					
L1NKERKANT/LEFT HAND SIDE			REGTERKANT/RIGHT HAND SIDE		
	y	X	WG27	y	X
L52	54981.660	2833848.140	R52	54969.730	2 833 819.540
L53	55064.350	2833814.950	R53	55304.260	2 833 684.890
L54	55148.550	2 833 781.240	R54	55428.530	2 833 634.550
L55	55379.450	2 833 688.070	R55	55765.580	2833499.140
L56	55456.800	2833656.910	R56	55920.760	2 833 425.290
L57	55801.780	2 833 518.400	R57	56001.200	2833392.740
L58	55966.290	2 833461.360	R58	56113.690	2 833 345.520
L59	56026.880	2833435.310	R59	56123.800	2 833 357.860
L60	56147.590	2 833 383.430	R60	56256.930	2833301.610
L61	56146.180	2 833 381.910	R61	56294.110	2 833 286.480
L62	56268.620	2833331.460	R62	56456.430	2833210.930
L63	56309.400	2 833 315.440	R63	56511.430	2833176.150
L64	56460.810	2833247.700	R64	56565.490	2 833 143.600
L65	56582.830	2 833 182.200	R65	56628.880	2833105.210
L66	56692.090	2833108.150	R66	56659.450	2833082.880
L67	56773.280	2 833 045.810	R67	56854.120	2 832 929.940
L68	57301.120	2832619.760	R68	56995.950	2 832 817.590
L69	57575.030	2 832 398.580	R69	57278.850	2 832 589.680
L70	57721.980	2832280.100	R70	57559.560	2832362.790
L71	57866.090	2832 170.580	R71	57709.980	2832242.100
L72	57909.330	2832138.110	R72	58147.00	2831 912.260
L73	58201.490	2 831 918.420	R73	58352.880	2831758.170
L74	58399.510	2 831 770.530	R74	58426.280	2831 701.520
L75	58493.120	2 831 702.530	R75	58566.540	2831616.910
L76	58607.930	2 831 635.940	R76	58731.060	2 831 542.680
L77	58785.490	2 831 561.820	R77	58751.740	2831 534.330
L78	59061.870	2 831 454.870	R78	58901.100	2 831 476.220
L79	59157.920	2831 417.550	R79	58934.600	2831 446.740
L80	59273.500	2831381.170	R80	58960.010	2831 436.820
L81	59367.970	2831 376.400	R81	59008.620	2 831 433.850
L82	59458.300	2831 396.140	R82	59048.260	2831416.240
L83	59489.600	2831 405.660	R83	59146.860	2831 374.060
L84	59549.280	2831 423.920	R84	59224.150	2831 347.660
L85	59708.140	2831 508.410	R85	59303.400	2831 332.580
L86	59813.790	2 831 564.370	R86	59409.840	2831325.130
L87	59911.670	2831 608.270	R87	59481.840	2831 343.280
L88	59944.950	2831 617.980	R88	59545.700	2 831 359.250
L89	59985.090	2 831 629.690	R89	59587.290	2 831 382.400
L90	60024.920	2831 657.070	R90	59615.890	2831398.170
L91	60040.150	2 831 661.230	R91	59641.700	2831358.120
L92	60086.660	2 831 659.960	R92	59681.050	2 831 401.600
L93	60147.470	2831 678.560	R93	59667.470	2831427.150
L94	60324130	2831 732.290	R94	59758.530	2831 481.550
L95	60482.300	2831 779.750	R95	59788.600	2831 499.240
L96	60641.920	2831 828.220	R96	59892.740	2831 552.220
L97	60705.090	2831 846,680	R97	59923.380	2831 564.710
L98	60827.250	2831 882.850	R98	60018.700	2831 598.030
L99	60934.400	2831 917.900	R99	60045.270	2 831 610.010
L100	60966.730	2 831 929.390	R100	60152.380	2831 643.270
L101	61 097.860	2831 978.270	R101	60278.940	2831 682.420
L102	61266.900	2 832 042.660	R102	60317.690	2 831 694.330

Vel	12	Van	18	P578/06
Sheet		of		

PADRESERWE KOORDINATE / ROAD RESERVE CO-ORDINATES					
L1NKERKANT/LEFT HAND SIDE			REGTERKANT/RIGHT HAND SIDE		
	Y	X	WG27	Y	X
L103	61285.380	2 832 050.010	R103	60527.000	2831 756.320
L104	61 317.760	2 832 078.030	R104	60940.960	2831 879.970
L105	61 346.630	2 832 089.270	R105	61030.980	2 831 911.980
L106	61 391.480	2832090.860	R106	61567.140	2832119,140
L107	61980.060	2832318.540	R107	61730.190	2 832 179.610
L108	62033.820	2 832 339.340	R108	61 897.260	2 832 243.520
L109	62159.510	2832387.540	R109	62044.050	2 832 305.830
L110	62224.690	2832412.480	R110	62173.750	2 832 351.580
L111	62307.420	2 832 443.380	R111	62389.035	2 832 434.295
L112	62396.290	2832473.310	R112	62415.440	2832440.480
L113	62506.270	2 832 501.430	R113	62550.470	2832472.110
L114	62598.520	2832519.360	R114	63167.750	2 832 566.450
L115	63133.950	2 832 600.470	R115	63356.780	2 832 595.600
L116	64063.810	2 832740.590	R116	64995.778	2 832 830.066
L117	64941.060	2832872.590	R117	65196.780	2 832 843.890
L118	65040.070	2 832 883.680	R118	65364.600	2 832 845.530
L119	65366.970	2 832 888.200	R119	66392.250	2 832 867.320
L120	65957.930	2 832 898.690	R120	66589.630	2 832 870.270
L121	66315.730	2 832 904.280	R121	66683.840	2 832 871.050
L122	66544.100	2832907.320	R122	66910.280	2 832 873.620
L123	66692.920	2832909.450	R123	67137.970	2832859.100
L124	66842.310	2832910.850	R124	67232.800	2 832 850.400
L125	67004.310	2832907.700	R125	67395.860	2 832 835.260
L126	67130.250	2 832897.060	R126	67642.510	2 832 788.250
L127	67489.970	2 832 861.880	R127	67806.840	2832732550
L128	67631.750	2 832 830.670	R128	67849.540	2 832 712.320
L129	67760.070	2 832 791.210	R129	67977.170	2 832 650.060
L130	67803.390	2 832 773.570	R130	68038.880	2832612.660
L131	67850.770	2 832 754.060	R131	68766.760	2 832 067.530
L132	67937.820	2 832 713.530	R132	69006.470	2 831 884.050
L133	67998.980	2 832 680.840	R133	69140.930	2 831 781.280
L134	68065.619	2832640.917	R134	69241.120	2831 710.700
L135	68160.570	2 832 575.570	R135	69290.340	2831 678.290
L136	69147.560	2831 824.810	R136	69328.010	2831 660.780
L137	69246.050	2831 749.960	R137	69489.100	2831 622.560
L138	69352.380	2831 693.730	R138	69834.720	2831 602.950
L139	69394.530	2831682.110	R139	70391.590	2831572.150
L140	69445.470	2831 667.900	R140	70518.660	2831561.790
L141	69516.100	2831 659.650	R141	70562.290	2831 539740
L142	69682.550	2831 650.450	R142	70580.870	2 831 537.680
L143	69808.350	2831 643.360	R143	70627.170	2 831 546.230
L144	70397.070	2831 610.900	R144	70985.600	2 831 485.360
L145	70439.040	2831 608.490	R145	71 102.670	2 831 462.090
L146	70490.830	2 831 603.790	R146	71 179.370	2 831 442.740
L147	70570.260	2831 594.760	R147	71270.590	2831418.090
L148	70673.490	2831 577.330	R148	71 431.600	2 831 374.350
L149	70728.840	2831 567.840	R149	71 570.510	2831 335990
L150	71 112.340	2 831 503.360	R150	71749.850	2 831 273.510
L151	71279.470	2831 456.750	R151	71 818.060	2831 250.890
L152	71440.260	2831 412.020	R152	71 912.680	2831 219.560
L153	71578.990	2831 372.680	R153	72 074.760	2 831 183.740

Vel	13	Van	18	P578/06
Sheet		of		

PADRESERWE KOORDINATE / ROAD RESERVE CO-ORDINATES						
L1NKERKANTILEFT HAND SIDE				REGTERKANT/RIGHT HAND SIDE		
	Y	X	WG27		Y	X
L154	71 670.150	2831 343.440	R154	72 103.950	2 831 180.770	
L155	71832.840	2831 286.250	R155	72 269.680	2831 163.370	
L156	71953.080	2831 253.530	R156	72 375.090	2 831 150.770	
L157	72 002.800	2831 237,440	R157	72433.900	2831 145.580	
L158	72 109.330	2 831 217,490	R158	72 567.880	2831 131.940	
L159	72156.890	2831 211.600	R159	72 647.390	2831121.010	
L160	72308,440	2831 196.550	R160	72740.920	2 831 095.350	
L161	72424.620	2831 184.340	R161	72 801.770	2 831 073.350	
L162	72515.080	2 831 175.330	R162	72 951.580	2 830 978.590	
L163	72 628,460	2831163,410	R163	72 999.410	2830932.530	
L164	72 740.170	2 831 134.910	R164	73167.540	2830752050	
L165	72795.040	2831117.240	R165	73382.940	2830514.690	
L166	72 846.980	2 831 089,460	R166	73460.780	2 830 434.530	
L167	72 958.100	2831 020.150	R167	73538.930	2 830 392.860	
L168	73 030.710	2830951.010	R168	73 601.890	2 830 369.440	
L169	73097.040	2830883.380	R169	73 663.550	2 830 359.030	
L170	73162.650	2830813.060	R170	73732.460	2830359.310	
L171	73213.090	2 830 758.360	R171	73776.900	2830367.240	
L172	73 397.280	2 830 560.090	R172	73 837.680	2 830 385.560	
L173	73471.710	2 830493.420	R173	73928.830	2 830 431.270	
L174	73551.290	2 830448.600	R174	73959.400	2 830 448.640	
L175	73637.090	2 830423.960	R175	74109.920	2 830494,130	
L176	73699.130	2830416.690	R176	74212630	2830498.210	
L177	73766.640	2830416.280	R177	74366.510	2 830 453.560	
L178	73830,490	2 830434.340	R178	74833.370	2 830 263.240	
L179	73888.290	2 830 456.390	R179	74889.260	2830240.110	
L180	73921.00	2 830 471.420	R180	74914.860	2 830 229.550	
L181	74007.140	2830517.580	R181	75082,900	2830162.780	
L182	74039.730	2 830 529.530	R182	75419.400	2 830 024,180	
L183	74085.260	2 830 542.060	R183	75582.350	2829957.730	
L184	74154,570	2 830 549.490	R184	75691.630	2 829 908.950	
L185	74217.850	2 830 545.170	R185	75920.750	2829813.180	
L186	74280.070	2 830 530.270	R186	76014,700	2829754.000	
L187	74368.050	2 830495.070	R187	76223,790	2829611.080	
L188	74855.270	2 830 294.280	R188	76274.260	2829577.220	
L189	74911.360	2830271.160	R189	76341.650	2 829 534.990	
L190	75445.720	2 830 051.380	R190	76387.230	2 829 506.480	
L191	75556.970	2 830 005.260	R191	76545.620	2829414,820	
L192	75625.050	2 829 976.930	R192	76558.720	2 829 408.260	
L193	75789.780	2829909.140	R193	76734.680	2829319.200	
L194	75923.690	2 829 852.260	R194	76937.820	2829213.210	
L195	75974.220	2 829 825.020	R195	76984.910	2829188.110	
L196	76017.270	2 829 798.020	R196	77 055.920	2829143040	
L197	76027.420	2 829 791.400	R197	77141.100	2829077.950	
L198	76294.910	2829607.130	R198	77214.890	2 829 010.490	
L199	76424.800	2 829 523.580	R199	77 527,100	2828712.130	
L200	76504,190	2829478.730	R200	77 575,720	2828667.900	
L201	76567.610	2 829445.540	R201	77 659.861	2828612.301	
L202	76665.010	2 829 395.960	R202	77 721.460	2 828 576.250	
L203	76746.170	2 829 354.350	R203	77 934.850	2 828450.640	
L204	76777.640	2829337.750	R204	78033.710	2 828 392.440	

Vel 14 Van 18
Sheet of

P578/06

PADRESERWE KOQRDINATE / ROAD RESERVE CO-ORDINATES						
L1NKERKANT/LEFT HAND SIDE			REGTERKANT/RIGHT HAND SIDE			
	Y	X	WG27		Y	X
L205	76966.850	2 829 241.020		R205	78066.920	2828373.800
L206	77 003.280	2 829 221.570		R206	78199.050	2 828297.850
L207	77 071.910	2829179.410		R207	78362.370	2 828 203.570
L208	77 134.950	2 829 133.520		R208	78531.860	2828103.880
L209	77 172.790	2 829 101.180		R209	78566.660	2 828 066.850
L210	77 238.950	2 829 038.910		R210	78581.480	2 828 058.930
L211	77 469.720	2828818.260		R211	78627.570	2 828 048.840
L212	77 598.720	2 828 698.490		R212	78667,830	2 828 024.570
L213	77 658.520	2 828 656.790		R213	78757,880	2827963.930
L214	77 666.410	2 828 652.150		R214	78965.910	2827801.160
L215	77 727.390	2828616.270		R215	78989.00	2 827 782.060
L216	77 924.270	2828502.140		R216	79078.590	2827710.560
L217	77 961.730	2 828 502.680		R217	79164.220	2 827 643.000
L218	77 973.430	2828513,840		R218	79358.010	2 827488.730
L219	77991.440	2 828502.930		R219	79499.150	2827368.020
L220	77989.230	2 828480.470		R220	79517.010	2 827 350.220
L221	78017.970	2828447.960		R221	79631.430	2827232,260
L222	78630.960	2 828 091.530		R222	79764.230	2 827 097.160
L223	78702.570	2 828 047.660		R223	80035.00	2 826 821.710
L224	78821,240	2 827 962.690		R224	80140.570	2826716,100
L225	78881.190	2 827 910,620		R225	80214.520	2 826 648.180
L226	78996.790	2827822,810		R226	80368.340	2 826 526.230
L227	79014.190	2 827 808.560		R227	80424.830	2826480.170
L228	79028.090	2 827 796.920		R228	80498.910	2826407.190
L229	79057.340	2 827 771.680		R229	80598.100	2 826 283.160
L230	79102.610	2 827 736.240		R230	80608.810	2 826 265.660
L231	79 184.500	2 827 673.390		R231	80707.320	2 826 119.840
L232	79436.970	2827472.000		R232	80794.100	2825989.760
L233	79538.470	2 827 381.470		R233	81228.800	2825354.010
L234	79646190	2827272.510		R234	81 261.550	2825291.790
L235	79773.030	2827 143.600		R235	81285.920	2825211.720
L236	80118.370	2 826 791.430		R236	81 301.490	2825133.520
L237	80169.140	2826741.120		R237	81 311.520	2 825 087.300
L238	80230.840	2826683.700		R238	81 315.140	2 825 068.450
L239	80293.350	2 826633.660		R239	81 331.710	2824981.950
L240	80431.030	2 826 526.970		R240	81380.670	2824860150
L241	80482.740	2 826478.280		R241	81 455.630	2 824 759.400
L242	80547.560	2 826409.550		R242	81 515.220	2824704.710
L243	80631.980	2826297.980		R243	81534.110	2 824692.690
L244	80707.490	2 826 186.820		R244	81595.780	2 824653.550
L245	80736,710	2 826 143.350		R245	81624.280	2 824617.270
L246	80811.710	2826031.660		R246	81 647.640	2 824604.280
L247	81 154.130	2825530.080		R247	81 703.800	2824590.710
L248	81276.990	2825344.210		R248	81 819.420	2 824 522,970
L249	81 335.850	2825236.730		R249	82040.830	2 824 394.970
L250	81 361.930	2 825 089.590		R250	82276.590	2 824 257.480
L251	81365.550	2 825 048.540		R251	82528.960	2824110.810
L252	81 388.100	2 824 940.410		R252	82800.990	2823952.010
L253	81402.020	2 824 902.400		R253	82827.900	2 823 936.200
L254	81429.680	2 824 853.950		R254	82921.170	2 823 887.650
L255	81476.370	2 824 792.370		R255	83110.280	2823824.790

Vel	15	Van	18	P578/06
Sheet		of		

PADRESERWE KOORDINATE / ROAD RESERVE CO-ORDINATES					
L1NKERKANT/LEFT HAND SIDE			REGTERKANT/RIGHT HAND SIDE		
	Y	X	WG27	y	X
L256	81 531.900	2824739.930	R256	83297.270	2 823 773.280
L257	81609.920	2824689.470	R257	83360.500	2 823 754.850
L258	81815.710	2824 569.030	R258	83532.200	2 823 707.280
L259	82038.630	2 824 438.940	R259	83702.00	2 823 660.900
L260	82276.230	2824301.00	R260	83822.090	2823645.440
L261	82530.990	2 824 152.870	R261	83890.200	2 823 646.360
L262	82806.010	2823991.960	R262	83966.680	2823659.020
L263	82873.890	2823953.120	R263	84032.270	2 823 677.180
L264	83020.810	2823888.710	R264	84102.210	2823705.940
L265	83118.510	2 823 860.500	R265	84160.660	2823738.720
L266	83306.280	2 823 809.050	R266	84265.800	2 823 820.280
L267	83382.050	2 823 789.520	R267	84419.210	2 823 951.210
L268	83562.860	2823739.720	R268	84448.870	2 823 976.930
L269	83650.440	2 823 715.420	R269	84654.990	2824144.410
L270	83733.930	2 823 693.340	R270	84850.600	2 824 290.150
L271	83800.300	2 823 684.830	R271	85030.320	2 824420.520
L272	83864.080	2823683.700	R272	85129.370	2 824491.650
L273	83930.280	2 823 691.230	R273	85160.310	2824513.500
L274	83989.490	2 823 703.670	R274	85274.540	2824596.140
L275	83999.840	2 823 706.460	R275	85422.950	2 824 701.870
L276	84042.190	2 823 722.430	R276	85577.010	2 824 802.660
L277	84077.610	2823736.470	R277	85846.380	2 824 977.060
L278	84111.480	2 823754.770	R278	85929.920	2 825 025.690
L279	84137.100	2823768.810	R279	86073.930	2 825 093.500
L280	84211.210	2 823 824.050	R280	86434.640	2 825 230.580
L281	84505.680	2 824 073.960	R281	86438.870	2 825 235.800
L282	84588.270	2824141.850	R282	86472.370	2825247.440
L283	84677.400	2824210.840	R283	86489.620	2 825 250.520
L284	84774.160	2 824 282.390	R284	86640.220	2825307.390
L285	85371.110	2824713.620	R285	86666.450	2825317.440
L286	85464.850	2 824 778.300	R286	86803.730	2 825 369.130
L287	85788.750	2824982.710	R287	87103.160	2825482.310
L288	85903.620	2 825 054.600	R288	87195.430	2 825 522.330
L289	85973.340	2825091.980	R289	87282.980	2 825 572.250
L290	86058.210	2825 125.030	R290	87325.380	2825602.770
L291	86145.270	2 825 158.270	R291	87512.640	2825749.560
L292	86307.270	2 825 220.100	R292	87619.380	2 825 820.230
L293	86411.780	2 825 260.260	R293	87773.700	2825894.140
L294	86631.850	2825344.510	R294	87928.560	2825961.160
L295	87087.420	2825518.840	R295	87967.870	2825982.690
L296	87126.590	2 825 533.680	R296	88126.280	2 826 079.820
L297	87164.090	2 825 549.460	R297	88281.470	2 826 182.440
L298	87205.030	2 825 569.340	R298	88375.920	2826245.780
L299	87236.680	2825588.410	R299	88404.960	2 826262.780
L300	87264.190	2 825 602.950	R300	88473.550	2 826297.320
L301	87297.700	2825624.740	R301	88514.244	2826317.274
L302	87338.810	2 825 654.580	R302	88615.363	2 826 353.214
L303	87539.380	2825816.440	R303	88723.252	2 826 378.933
L304	87561.400	2825833.790	R304	88831.461	2 826 390.683
L305	87584.380	2 825 849.740	R305	88930.220	2 826 390.813
L306	87611.290	2825864.140	R306	89056.309	2 826 375.963

Vel 16 Van 18
Sheet of

P578/06

PADRESERWE KOORDINATE / ROAD RESERVE CO-ORDINATES					
L1NKERKANT/LEFT HAND SIDE			REGTERKANT/RIGHT HAND SIDE		
	Y	X	WG27	Y	X
L307	87639.040	2 825 876.510	R307	89303.706	2826331.334
L308	87874.520	2825973.780	R308	89395.475	2 826 320.574
L309	87907.500	2 825 987.590	R309	89477.334	2826318.024
L310	87938.830	2826002.080	R310	89559.763	2 826 321.584
L311	87964.790	2826016.650	R311	89677.512	2826337.674
L312	87989.820	2 826 031.870	R312	89831.490	2 826 360.444
L313	88010.470	2826 045.520	R313	89986.728	2 826 386.376
L314	88031.040	2 826 060.830	R314	90048.999	2 826 395.493
L315	88293.280	2 826 261.450	R315	90048.167	2826393.770
L316	88319.700	2 826 279.960	R316	90496.160	2826461.740
L317	88355.900	2 826 302.980	R317	90629.420	2 826 458.150
L318	88395.430	2826325.510	R318	90716.960	2 826429.040
L319	88411.960	2826 334.180	R319	90842.730	2826367.480
L320	88450.980	2 826 352.800	R320	90922.810	2 826 336.020
L321	88548.480	2 826391.1 D0	R321	90967.738	2826325.134
L322	88657.170	2826408.510	R322	91 025.348	2826331.394
L323	88780.290	2826425.510	R323	91 105.237	2 826 353.304
L324	88884.261	2 826 431.403	R324	91 109.637	2 826 373.193
L325	88957.500	2826428.813	R325	91 262.125	2826414.463
L326	89049.699	2826417.593	R326	91474.523	2 826 472.582
L327	89294.956	2 826 372.803	R327	91 674.601	2 826 527.022
L328	89403.495	2826359.704	R328	91 845.259	2 826 572.301
L329	89567.683	2 826 362.464	R329	91 971.057	2 826 606.371
L330	89668.862	2 826 371.473	R330	92258.534	2826.684.410
L331	89824.300	2 826 394.203	R331	92571.281	2 826 769.029
L332	90007.692	2826421.267	R332	92760.499	2 826 820.059
L333	90065.828	2 826429.780	R333	93005.176	2 826 885.678
L334	90067.105	2 826 432.185	R334	93042.056	2 826 898.848
L335	90455.580	2 826491.200	R335	93072.546	2 826 915.978
L336	90580.240	2 826 503.390	R336	93098.405	2 826 923.348
L337	90671.480	2 826 487.460	R337	93104.383	2826933.938
L338	90743.730	2 826 458.090	R338	93115.027	2 826 936.338
L339	90858.090	2826401.140	R339	93131.940	2 826 954.500
L340	90910.730	2 826 380.460	R340	93 161.128	2 827 034.944
L341	90963.268	2826367.753	R341	93161.128	2827074.193
L342	91068.067	2 826 396.603	R342	93161.128	2 827 090.043
L343	91 125.707	2 826 391.473	R343	93160.640	2 827 160.140
L344	91 253.955	2 826426.203	R344	93167.410	2827210.580
L345	91469.533	2826484.732	R345	93185.840	2 827 270.800
L346	91 670.871	2 826 540.492	R346	93195.340	2 827 289.370
L347	91803.149	2826577.191	R347	93227.990	2 827 323.220
L348	91838.879	2 826 589.161	R348	93239.890	2 827 345.210
L349	91 967.728	2 826623.921	R349	93247.730	2827391.750
L350	92252.344	2 826 700.630	R350	93287.540	2 827 468.290
L351	92563.151	2 826 782.859	R351	93307.760	2 827 505.040
L352	92751.879	2 826 833.588	R352	93324.320	2827535.140
L353	92992.047	2 826 898.228	R353	93358.960	2 827 566.990
L354	93036.636	2826910.748	R354	93385.560	2 827 551.420
L355	93070.416	2 826 928.077	R355	93395.700	2 827 574.460
L356	93087.489	2 826 946.857	R356	93371.020	2 827 588.910
L357	93077.285	2 826 950.659	R357	93381.530	2 827 639.000

Vel 17 Van 18
Sheet of

P578/06

PADRESERWE KOORDINATE / ROAD RESERVE CO-ORDINATES					
L1NKERKANT/LEFT HAND SIDE			REGTERKANT/RIGHT HAND SIDE		
	Y	X	WG27	y	X
L358	93099.890	2 826 973.960	R358	93414.550	2 827 686.930
L359	93119.030	2827032.710	R359	93485.870	2 827 759.260
L360	93122.030	2827099.160	R360	93571.850	2 827 842.970
L361	93123.230	2827 162.840	R361	93664.747	2 827 932.609
L362	93130.870	2827219.020	R362	93851.560	2 828 112.870
L363	93152.460	2827287.880	R363	94 196.500	2 828443.410
L364	93 168.590	2 827 352.340			
L365	93155.240	2827359.170			
L366	93166.630	2827381.430			
L367	93179.980	2 827 374.590			
L368	93213.830	2827407.820			
L369	93239.380	2 827457.740			
L370	93254.990	2827486.920			
L371	93303.390	2 827 574.890			
L372	93348.310	2 827656.530			
L373	93370.580	2 827688.940			
L374	93385.450	2 827 710.590			
L375	93440.720	2 827 770.481			
L376	93472.050	2 827 800.590			
L377	93525.430	2 827 851.880			
L378	94004.520	2 828 311.381			
L379	94130.610	2 828 432.530			
L380	94207.480	2 828 506.400			

Vel	18	Van	18	<i>P578/06</i>
Sheet		of		