

CONTENTS**INHOUD**

<i>No,</i>	<i>Page No,</i>	<i>Gazette No,</i>	<i>No,</i>	<i>Bladsy No,</i>	<i>Koerant No,</i>
GOVERNMENT NOTICE			GOEWERMENSKENNISGEWING		
Transport, Department of			Vervoer, Departement van		
<i>Government Notice</i>			<i>Goewermentskennisgewing</i>		
753			753		
South African National Roads Agency Limited and the National Roads Act (7/1998): The South African National Roads Agency Limited: Declaration amendment of National Road N4 Section 11: Amendment of Declaration Nos. 2447 of 1992, 1636 of 1992 and 1322 of 1989			SUIid-Afrikaanse Nasionale Padagentskap Beperk en die Nasionale Paaie Wet (7/1998): Die Suid-Afrikaanse Nasionale Padagentskap Beperk: Verklaring wysiging van Nasionale Pad N4 Seksie 11: Wysiging van Verklaring Nos. 2447 van 1992, 1636 van 1992 en 1322 van 1989		
	3	30202		4	30202

GOVERNMENT NOTICE
GOEWERMENSKENNISGEWING

DEPARTMENT OF TRANSPORT
DEPARTEMENT VAN VERVOER

No. 753

24 August 2007

THE SOUTH AFRICAN NATIONAL ROADS
AGENCY LIMITED

Registration No: 98/09584/06

DECLARATION AMENDMENT OF NATIONAL ROAD N4 SECTION 11

AMENDMENT OF DECLARATION NO'S. 2447 OF 1992, 1636 OF 1992 AND 1322 OF 1989

By virtue of section 40 (1)(b) of the South African National Roads Agency Limited and the National Roads Act, 1998 (Act No.7 of 1998), I hereby amend the following declarations by substituting (I) Declaration No. 2447 of 1992, sheets 1 and 2 of Plan No. P392/92, (II) Declaration No. 1636 of 1992 sheets 1 to 3 of Plan No. P388/92 and (III) Declaration No. 1322 of 1989 the section from Rebecca Street up to and including Portion 507 of the farm Pretoria Town and Townlands 351 -JR as referred to Administrator notices no's 70 of 1981,1921 of 1982 and 2868 of 1985 in declaration 1322 of 1989, with the subjoined sheets 1 to 9 of Plan No.P591/06.

(National Road N4 Section 11: Rebecca Street - Elandsfontein)



DIE SUID-AFRIKAANSE NASIONALE PADAGENTSKAPBEPERK

Registrasie No: 98/09584/06

VERKLARING WYSIGING VAN NASIONALE PAD N4 SEKSIE 11.

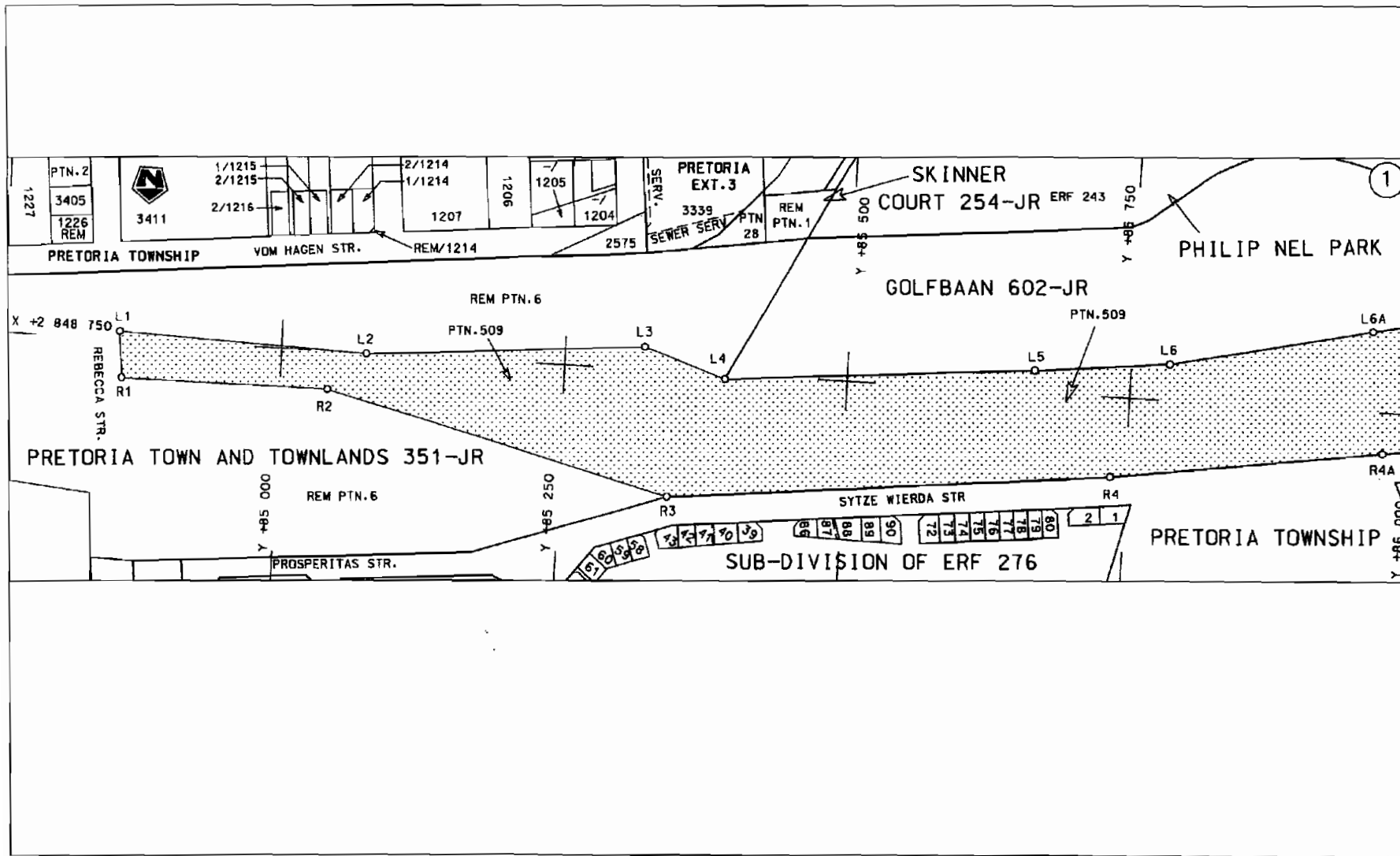
WYSIGING VAN VERKLARING NO'S. 2447 VAN 1992, 1636 VAN 1992 EN 1322 VAN 1989

Kragtens Artikel 40(1)(b) van die Suid Afrikaanse Nasionale Padagentskap Beperk en die Nasionale Paaie Wet, 1998 (Wet NO.7 van 1998), wysig ek hiermee die volgende verklarings deur **(I)** Verklaring No. 2447 van 1992, velie 1 en 2 van Plan No. P392/92, **(II)** Verklaring NO.1636 van 1992 velie 1 tot 3 van Plan No. P388/92 en **(III)** Verklaring No. 2029 van 1990, die gedeelte vanaf Rebecca straat tot en insluitende Gedeelte 507 van die plaas Pretoria Town and Townlands 351 - JR soos verwys na Administrateurs kennisgewings no's 70 van 1981, 1921 van 1982 en 2868 van 1985 in verklaring 1322 van 1989, te vervang met meegaande velie 1 tot 9 van Plan no. P591/06.

(Nasionale Pad N4 Seksie 11: Rebecca straat- Elandsfontein)

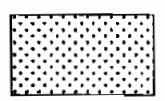


MINISTER VAN VERVOER



Die Suid Afrikaanse Nasionale Padagentskap Beperk
 The South African National Roads Agency Limited

Die figuur getoon
 The figure shown

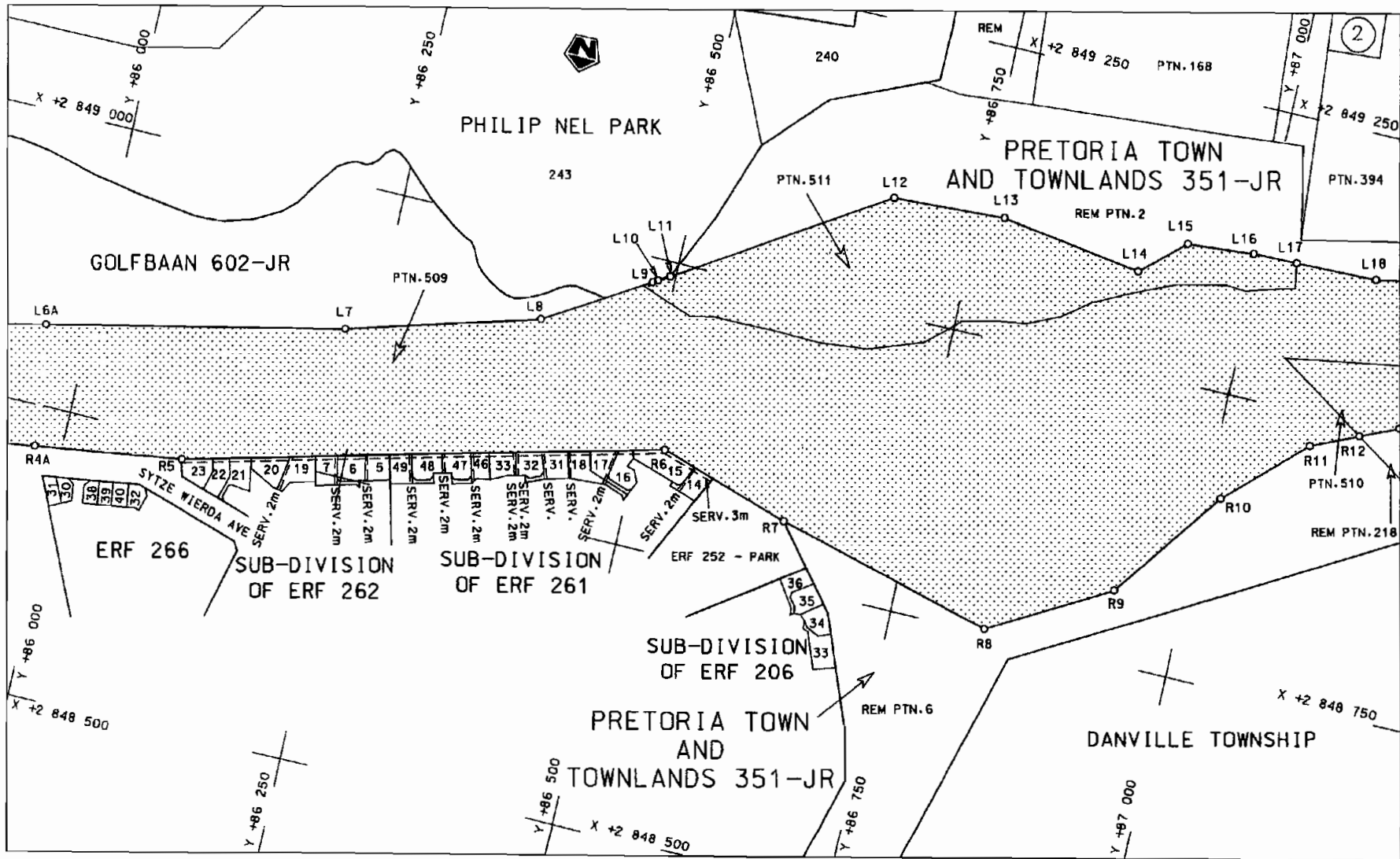


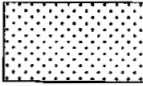
steldie padreserwe voor van 'n gedeelte
 represents the road reserve of a portion
 van Nasionale Roete N4
 of National Route N4

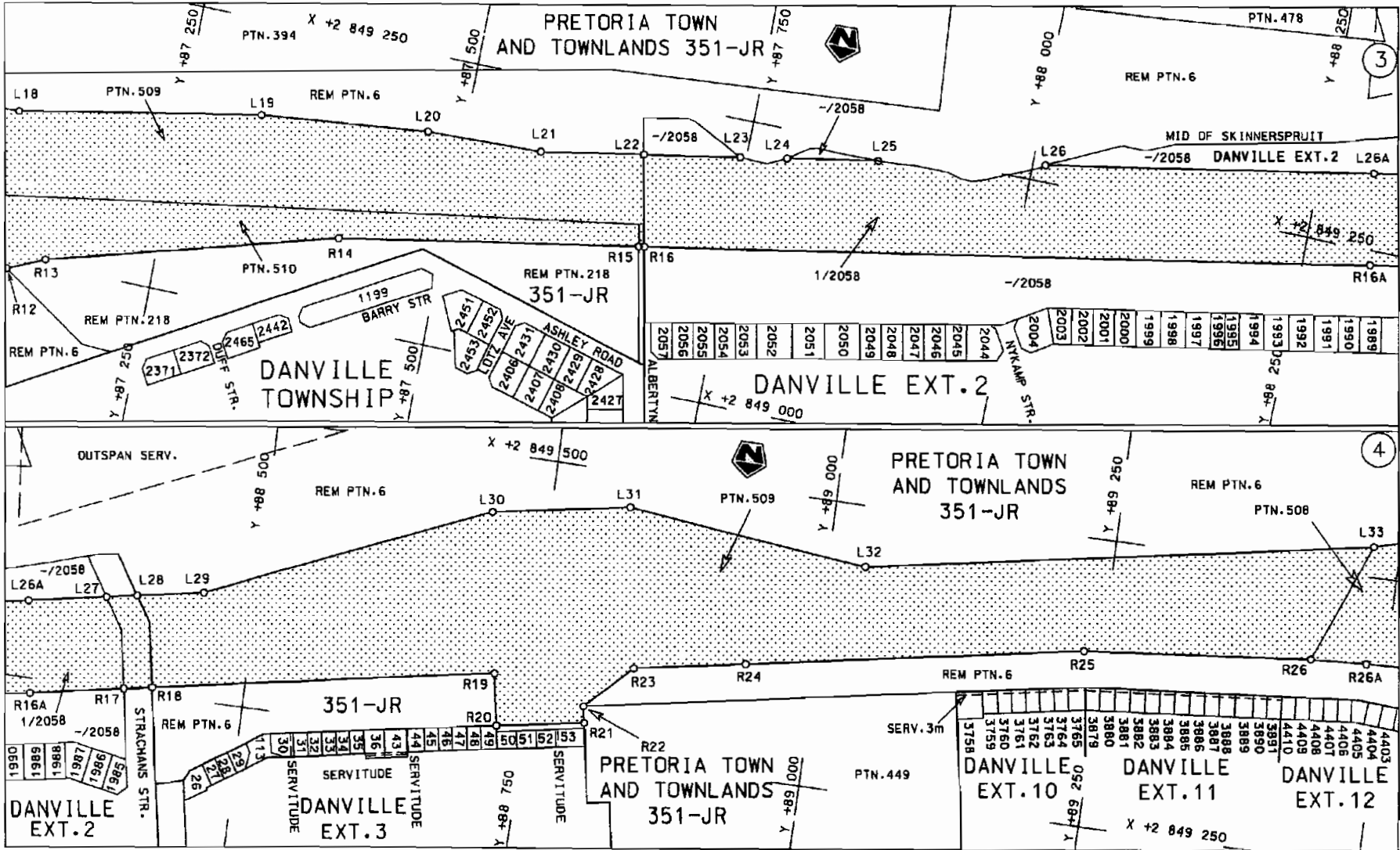
Seksie 11
 Section 11

Vel 1 van 9
 Sheet 1 of 9
 Plan P591/06

D.O.9.A

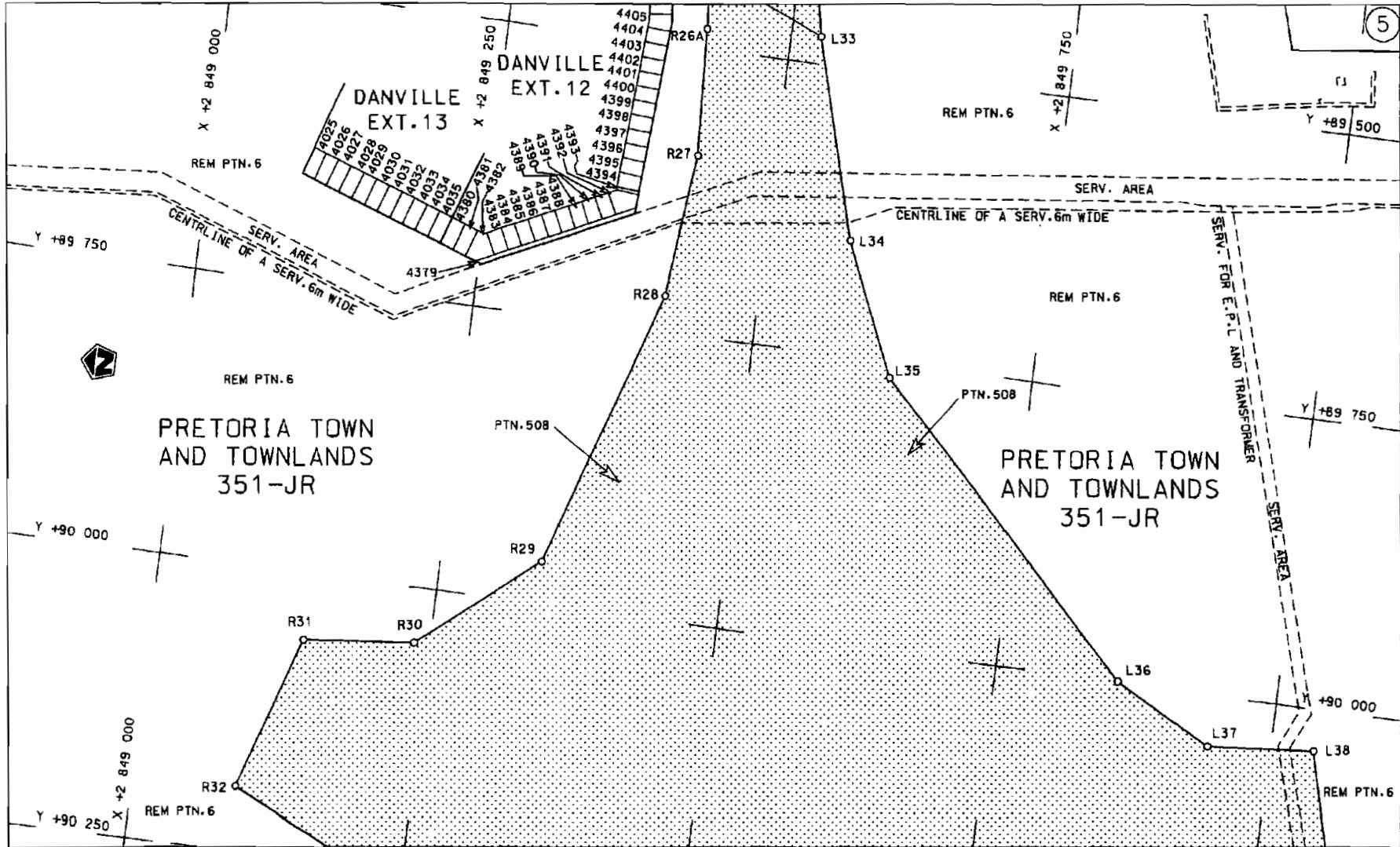


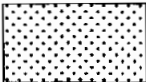
Die Suid Afrikaanse Nasionale Padagentskap Beperk The South African National Roads Agency Limited	Die figuur getoon The figure shown	 steldie padreserwe voor van 'n gedeelte represents the rood reserve of a portion van Nasionale Roete N4 Seksie of National Route Section 11	Vel Sheet 2 van of 9 Plan P591/06
--	---------------------------------------	---	--------------------------------------

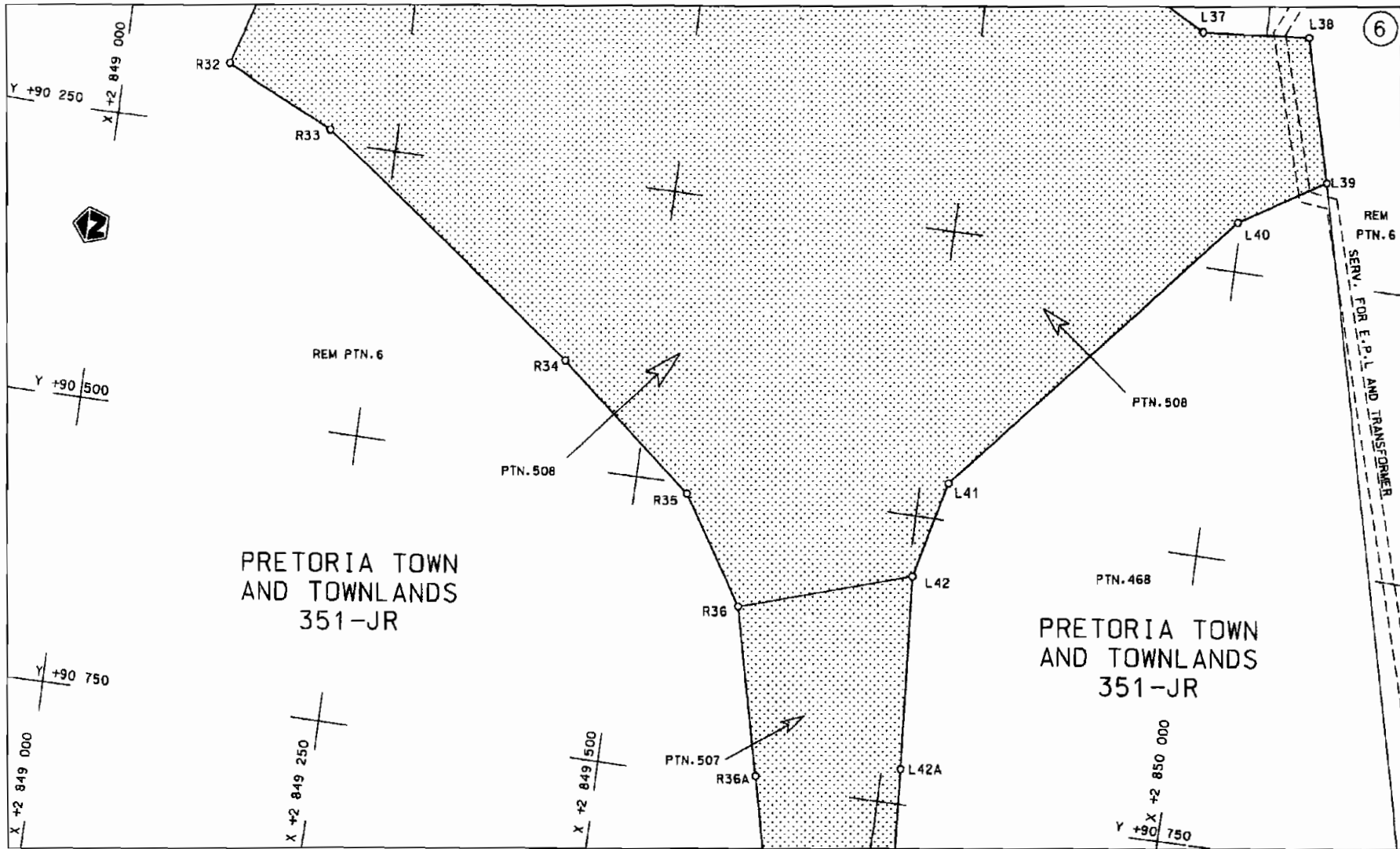


<p>Die Suid Afrikaanse Nasionale Padagentskap Beperk The South African National Roads Agency Limited</p>	<p>Die figuur getoon The figure shown</p>		<p>steldie padreserwe voor van 'n gedeelte represents the road reserve of a portion van Nasionale Roete N4 Seksie 11 of National Route Section</p>	<p>Vel Sheet 3 van 9 Plan P591/06</p>
--	---	--	--	---

D.O.9.A

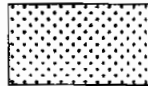


<p>Die Suid Afrikaanse Nasionale Padagentskap Beperk The South African National Roads Agency Limited</p>	<p>Die figuur getoon The figure shown</p> 	<p>steldie padreserwe voor van 'n gedeelte represents the road reserve of a portion van Nasionale Roete N4 Seksie 11 of National Route N4 Section 11</p>	<p>Vel Sheet 4 van of 9 Plan P591/06</p>
--	--	--	--



Die Suid Afrikaanse Nasionale Padagentskap Beperk
The South African National Roads Agency Limited

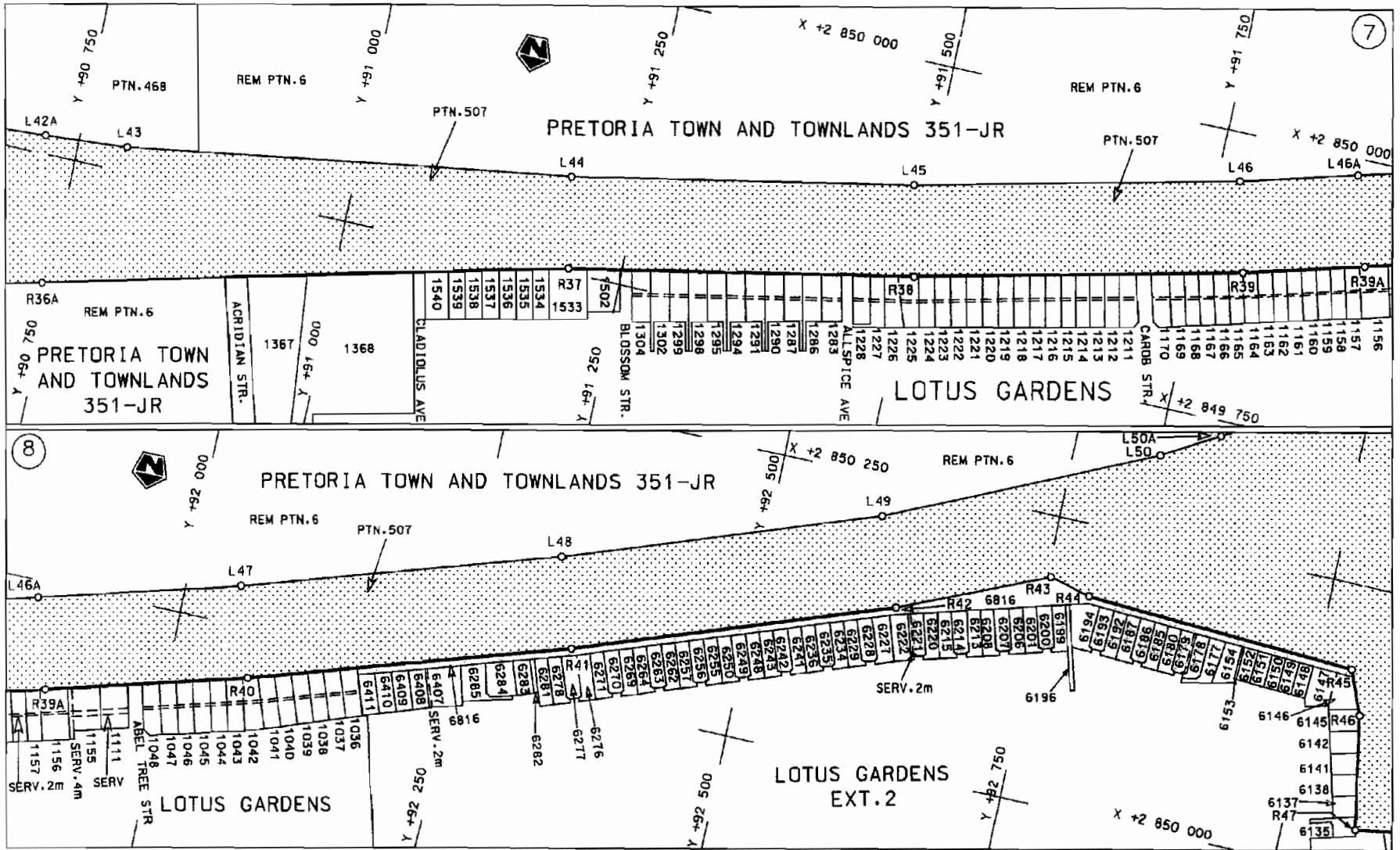
Die figuur getoon
The figure shown



steldie padreserwe voor van 'n gedeelte
represents the road reserve of a portion
van Nasionale Roete N4 Seksie Section
of National Route 11

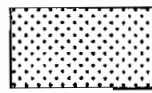
Vel Sheet 5 van of 9
Plan P591/06

D.O.9.A



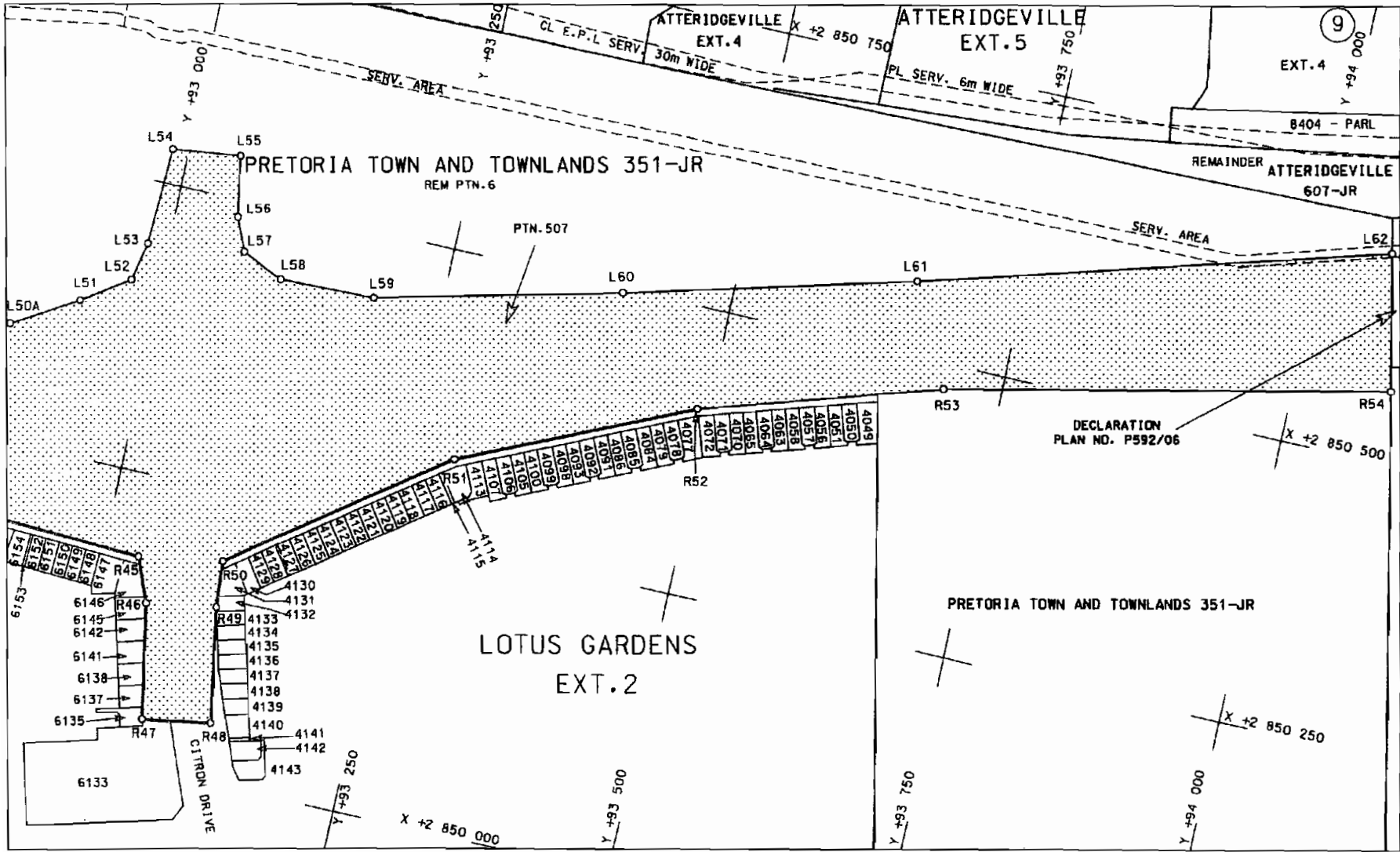
Die Suid Afrikaanse Nasionale Padagentskap Beperk
The South African National Roads Agency Limited

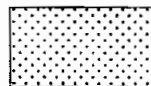
Die figuur getoon
The figure shown



steldie padreserwe voor van 'n gedeelte
represents the road reserve of a portion
van Nasionale Roete N4 Seksie 11
of National Route Section

Vel Sheet 6 van 9
Plan P591/06



Die Suid Afrikaanse Nasionale Padagentskap Beperk The South African National Roads Agency Limited	Die figuur getoon The figure shown	 steldie padreserwe voor van 'n gedeelte represents the road reserve of a portion van Nasionale Roete N4 of National Route Section 11	Vel Sheet 7 van of 9 Plan P591/06
--	---------------------------------------	--	--------------------------------------

D.O.9.A

PADRESERWE KOORDINATE / ROAD RESERVE CO-ORDINATES						
LINKERKANT/LEFT HAND SIDE				REGTERKANT/RIGHT HAND SIDE		
	Y	X	WG 29°		Y	X
L1	84853.650	2848756.516	R1	84857.133	2 848 716.548	
L2	85074.959	2848749.424	R2	85041.929	2848716.654	
L3	85320139	2848769.571	R3	85345.960	2848641.350	
L4	85 392.406	2848745.743	R4	85736206	2848680.814	
L5	85664.997	2848768908	R5	66106012	2 848 732.730	
L6	85783.537	2848781206	R6	86523.924	2848 839393	
L7	86224.537	2848876.702	R7	86640.981	2848 803.372	
L8	86391.497	2 848 924.901	R8	86833.948	2848753945	
L9	86480.851	2 848 978.858	R9	86938.782	2848 812.479	
L10	86485131	2 848 981.443	R10	87013.177	2848910.723	
L11	86494997	2 848 987.400	R11	87079.930	2 848 972.860	
L12	86673.456	2849098.371	R12	87121.052	2 848 990.889	
L13	86772.482	2849103977	R13	87154025	2849005345	
L14	86 898.152	2849086.496	R14	87408.476	2849 075.747	
L15	86936.025	2849119776	R15	87670.515	2 849 122.634	
L16	86994.571	2 849 124.722	R16	87675.224	2849 123.476	
L17	87033.322	2849 125.602	R17	88392.505	2849251.819	
L18	87105.450	2849127.241	R18	88417.359	2 849 256.266	
L19	87320.422	2849 167.467	R19	88718.441	2849310.138	
L20	87467967	2849182.915	R20	88726.420	2 849 265.070	
L21	87569.275	2849185961	R21	88803.235	2 849 278.618	
L22	87 659.561	2 849 202.084	R22	88800.814	2849 292.835	
L23	87744.370	2849217.230	R23	88840.269	2849331.925	
L24	87785.460	2 849 224.570	R24	88938756	2 849 349.456	
L25	87864.920	2849238.760	R25	89234.168	2 849 401.928	
L26	88010.880	2849264820	R26	89433.515	2849422.414	
L27	88366630	2 849 328.350	R27	89594.566	2849430.828	
L28	88393545	2 849 333.158	R28	89718.945	2849417.357	
L29	88452100	2849343615	R29	89963.541	2 849 338.922	
L30	88698041	2849448.274	R30	90047979	2 849 235.680	
L31	88 818.584	2849469381	R31	90058275	2 849 136.874	
L32	89032682	2849447.137	R32	90192620	2 849 092.598	
L33	89476263	2 849 526.427	R33	90238.632	2849 190038	
L34	89650.440	2849574.862	R34	90408.553	2849423668	
L35	89763267	2 849624.346	R35	90508584	2649 546.138	
L36	89 999.192	2 849 858.489	R36	90599.658	2849605.073	
L37	90044.803	2849944.119	R37	91 202.950	2 849 753.630	
L38	90036.594	2850037.754	R38	91 505.280	2849813.087	
U9	90162392	2 850 070.682	R39	91 789.420	2849 879.984	
L40	90207.533	2849997275	R40	92070.945	2849957.149	
L41	90467.766	2849774582	R41	92349.478	2850 044.470	
L42	90552.743	2 849 754.152	R42	92624.688	2850 141.77D	
L43	90793368	2 849 771.7D7	R43	92753.360	2850197.164	
L44	91 188.743	2849832341	R44	92790.116	2850 188.249	
L45	91488.166	2 849 891.029	R45	93031.668	2850177.170	
L46	91. 769.715	2849957.451	R46	93047.148	2 850 139.270	
L47	92 048391	2 850 033.925	R47	93065.185	2850 040.999	
L48	92324.247	2850120364	R48	93126328	2850 051.170	
L49	92596.171	2850216540	R49	93109817	2850149.759	
L50	92825.955	2850322213	R50	93107.034	2850 189.966	
L51	92932.655	2850383457	R51	93289.308	2850 322070	

Vel 8 Van 9
Sheet of

P591/06

PADRESERWE KOORDINATE / ROAD RESERVE CO-ORDINATES					
IINKERKANT/LEFT HAND SIDE			REGTERKANT/RIGHT HAND SIDE		
	y	X	WG29°	y	X
L52	92 973.561	2850411.037	R52	93490.068	2850412.870
L53	92981.531	2 850444.604	R53	93699.157	2850477676
L54	92 985568	2850530432	R54	94085.736	2850563029
L55	93047.030	2850538025			
L56	93056.106	2 850484.952			
L57	93068486	2 850456.897			
L58	93105.154	2 850 440.697			
L59	93189023	2 850 442.849			
L60	93404.076	2 850 496.105			
L61	93656571	2 850 563.333			
L62	94060.994	2850679.302			

Vel Sheet	9	Van of	9	P591/06
--------------	---	-----------	---	---------