

CONTENTS**INHOLID**

<i>No.</i>	<i>Page No.</i>	<i>Gazette No.</i>	<i>No.</i>	<i>B/adsy No.</i>	<i>Koerant No.</i>
GOVERNMENT NOTICE			GOEWERMENTSKENNISGEWING		
Transport, Department of			Vervoer, Departement van		
<i>Government Notice</i>			<i>Goewermentskennisgewing</i>		
754			754		
South African National Roads Agency Limited and the National Roads Act (7/1998): The South African National Roads Agency Limited: Declaration amendment of National Road N4 Section 14: Amendment of Declaration NO.1010 of 1998			Suid-Alrikaanse Nasionale Padagentskap Beperk en die Nasionale Paaie Wet (7/1998): Die Suid-Afrikaanse Nasionale Padagentskap Beperk: Verklaring wysiging van Nasionale Pad N4 Seksie 14: Wysiging van Verklaring No. 1010 van 1998		
	3	30203	..	4	30203

**GOVERNMENT NOTICE
GOEWERMENTSKENNISGEWING**

**DEPARTMENT OF TRANSPORT
DEPARTEMENT VAN VERVOER**

No. 754

24 August 2007

**THE SOUTH AFRICAN NATIONAL ROADS
AGENCY LIMITED**

Registration No: 98/09584/06

DECLARATION AMENDMENT OF NATIONAL ROAD ~~N~~ SECTION 14

AMENDMENT OF DECLARATION No. 1010 OF 1998

By virtue of section 40 (1)(b) of the South African National Roads Agency Limited and the National Roads Act, 1998 (Act NO.7 of 1998), I hereby amend Declaration No. 1010 of 1998, by substituting the descriptive section from the farm Rietvly 271 - JQ up to the farm Sterkstroom 411 - JP with the subjoined sheets 1 to 18 of Plan P577/06.

(National Road N4 Section 14: Rietvly - 271 - JQ to Sterkstroom 411 • JP)

J. Radby

No. 754

24 Augustus 2007

DIE SUID-AFRIKAANSE NASIONALE PADAGENTSKAPBEPERK

Registrasie No: 98/09584/06

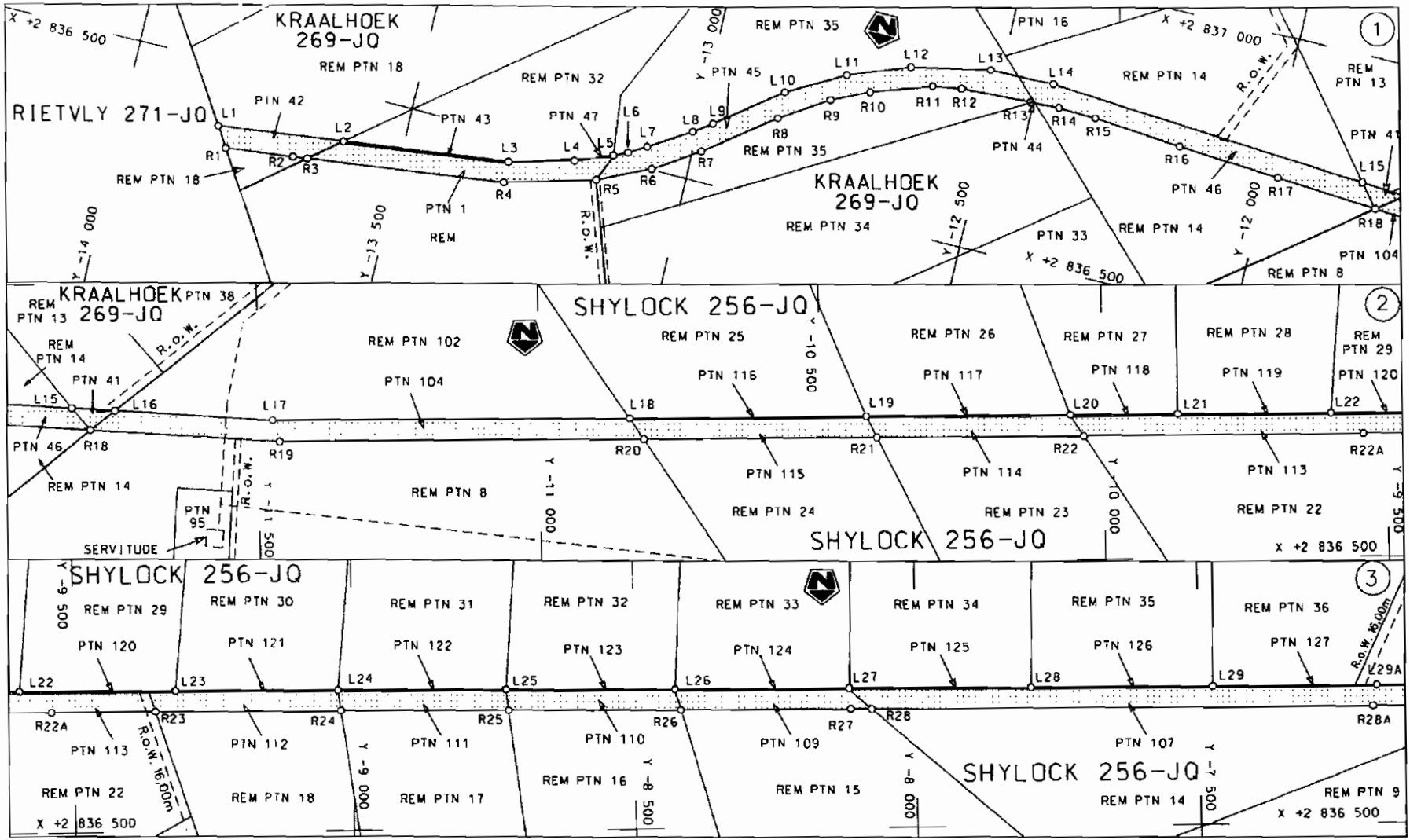
VERKLARING WYSIGING VAN NASIONALE PAD N4 SEKSIE 14.

WYSIGING VAN VERKLARING NO. 1010 VAN 1998

Kragtens Artikel40(1)(b) van die Suid Afrikaanse Nasionale Padagentskap Beperk en die Nasionale Paaie Wet, 1998 (Wet No.7 van 1998), wysig ek hiermee Verklaring No.1010 van 1998, deur die beskrywende gedeelte vanaf die plaas Rietvly 271 - JQ, tot die plaas Sterkstroom 411 - JP, te vervang met meegaande velie 1 tot 18 van Plan No. P577/06.

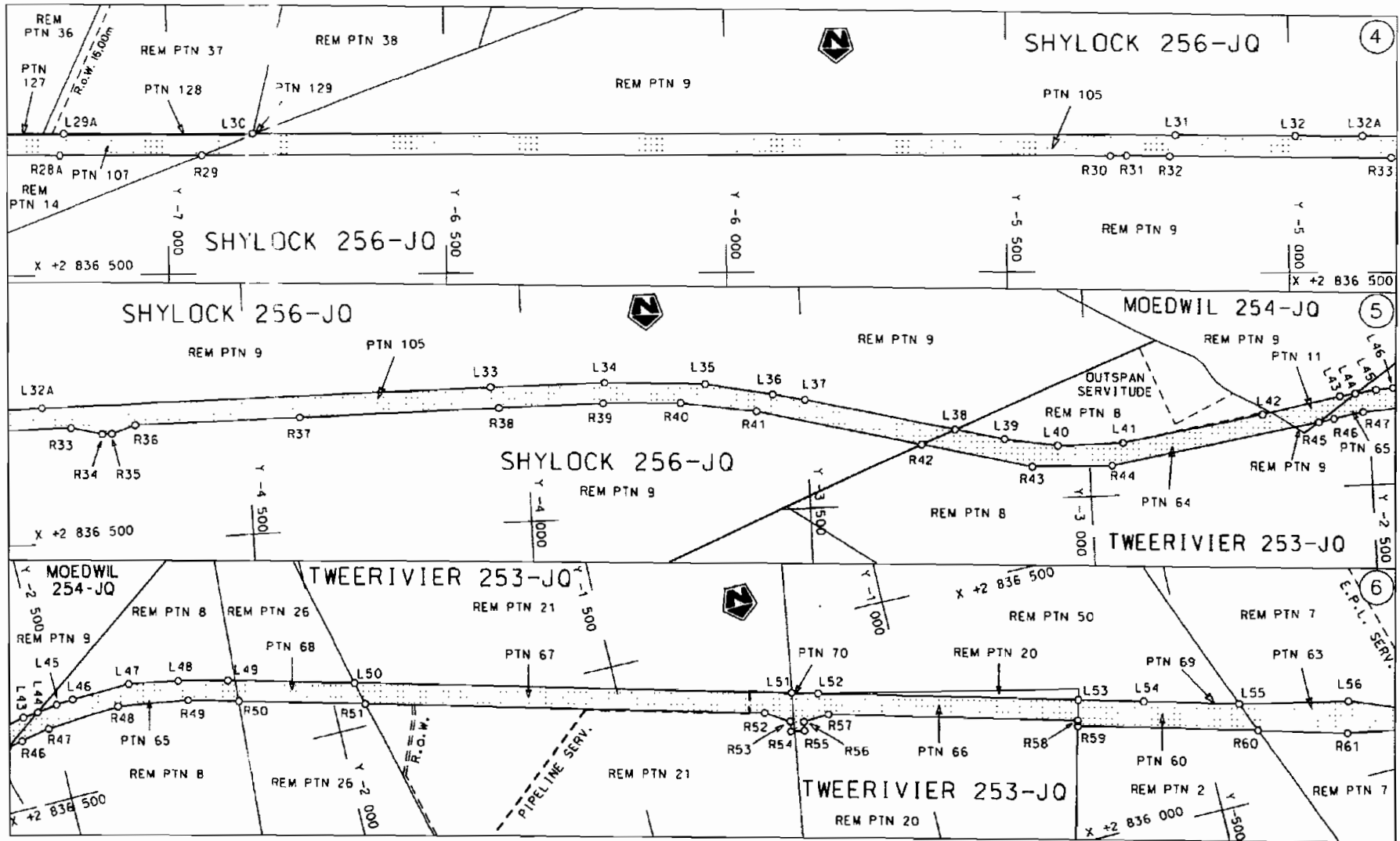
(Nasionale Pad N4 Seksie 14: Rietvly 271 - JQ tot Sterkstroom 411 . JP)



MINISTER VAN VERVOER

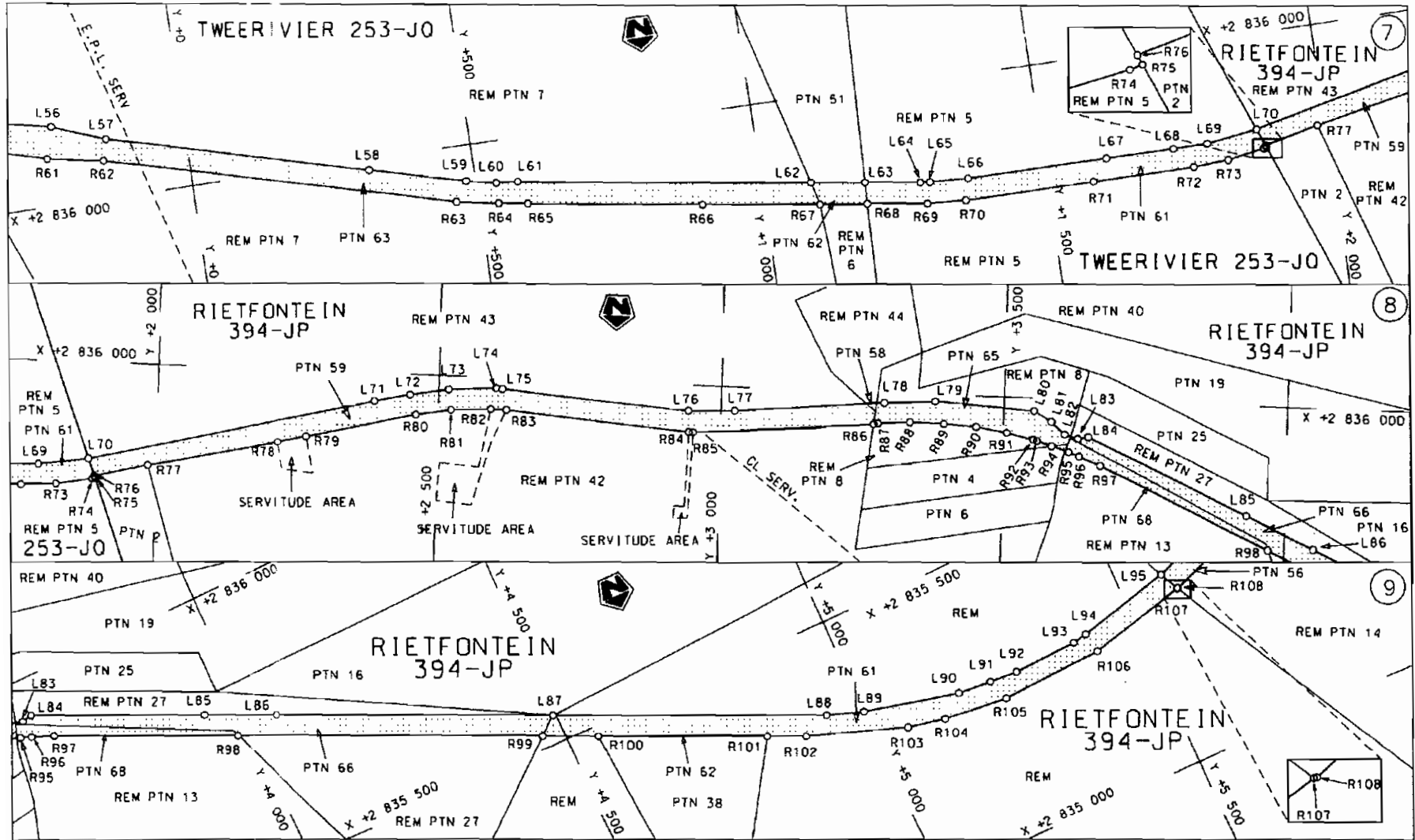


<p>Die Suid Afrikaanse Nasionale Padagentskap Beperk The South African National Roads Agency Limited</p>	<p>Die figuur getoon The figure shown</p>	<p>steldie padreserwe voor van 'n gedeelte represents the road reserve of a portion van Nasionale Roete of National Route N4</p>	<p>Vel Sheet 1 van of 18 Plan P577/06</p>
--	---	--	---

D.O.9.A



<p>Die Suid Afrikaanse Nasionale Padagentskap Beperk The South African National Roads Agency Limited</p>	<p>Die figuur getoon The figure shown</p> 	<p>steldie padreserwe voor van 'n gedeelte represents the road reserve of a portion van Nasionale Roete N4 Seksie Section of Notional Route 14</p>	<p>Vel Sheet 2 van of 18 Plan P577/06</p>
--	--	--	---



Die Suid Afrikaanse Nasionale Padagentskap Beperk
The South African National Roads Agency Limited

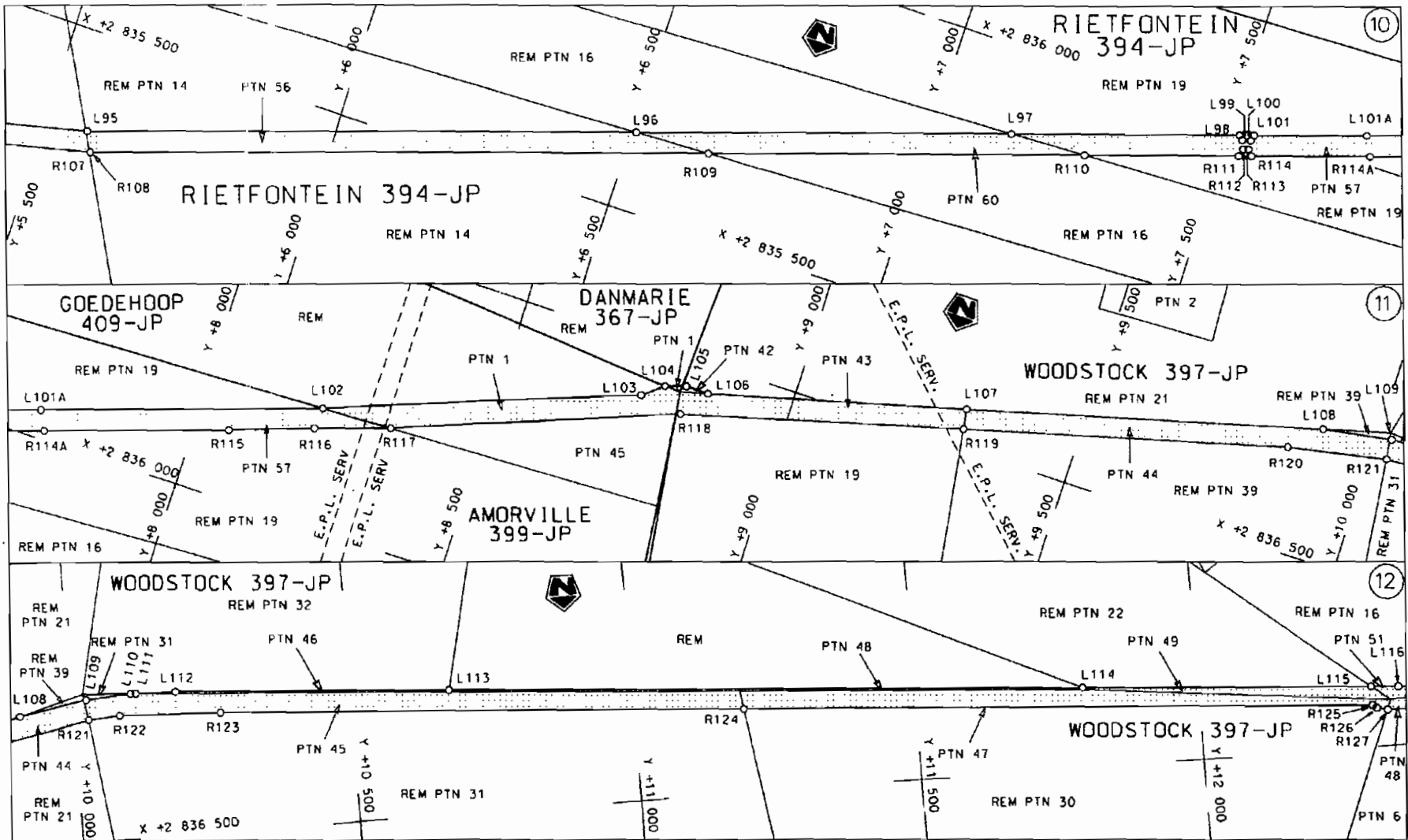
Die figuur getoon
The figure shown

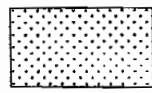


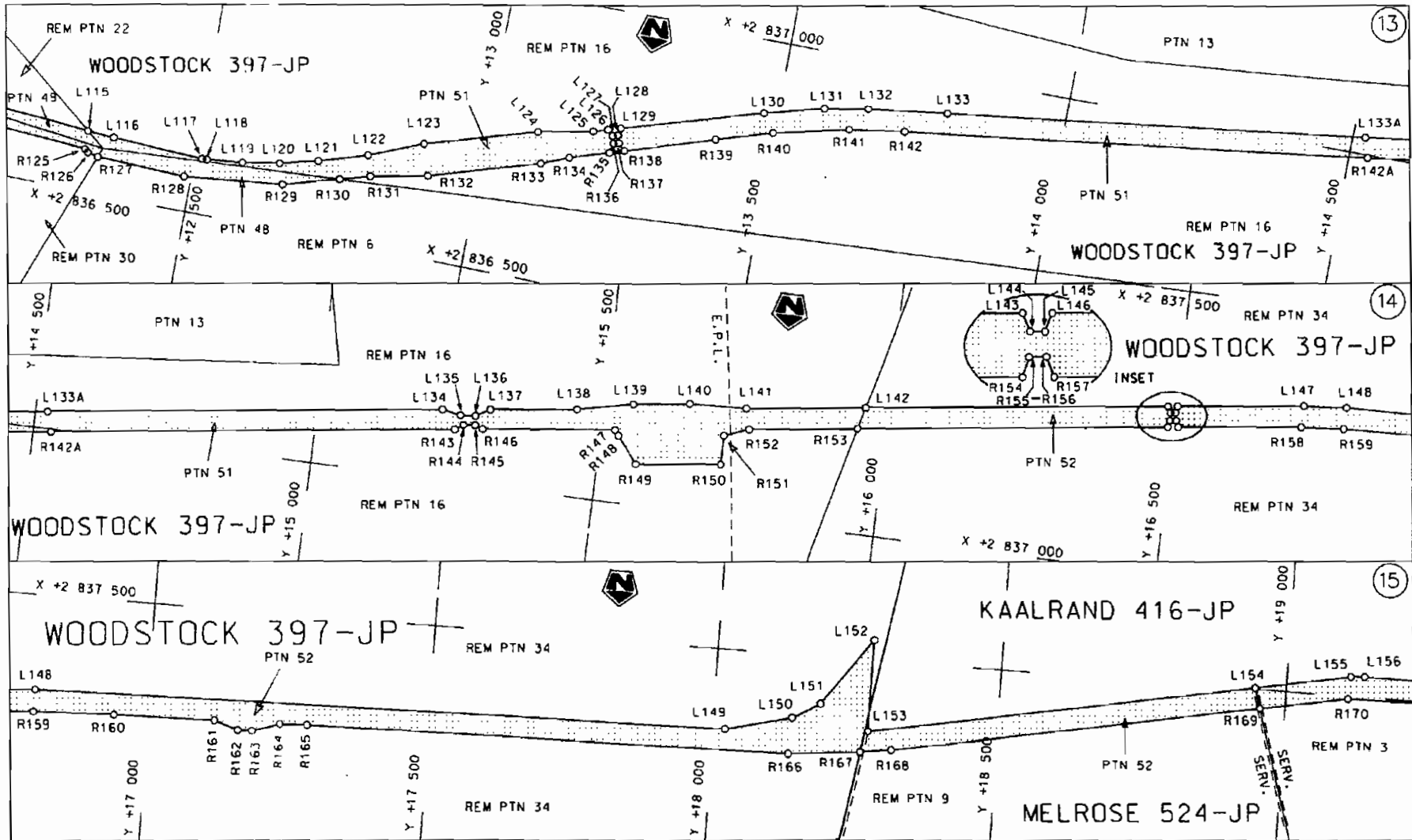
steldie padreserwe voor van 'n gedeelte
represents the road reserve of a portion
van Nasionale Roete N4 Seksie 14
of National Route Section

Vel Sheet 3 van 18
Plan P577/06

D.O.9.A

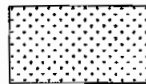


<p>Die Suid Afrikaanse Nasionale Padagentskap Beperk The South African National Roads Agency Limited</p>	<p>Die figuur getoon The figure shown</p>	 <p>steldie padreserwe voor van 'n gedeelte represents the road reserve of a portion van Nasionale Roete N4 of National Route N4</p>	<p>Vel Sheet 4 van of 18</p>
<p>14</p>			<p>Plan P577/06</p>



Die Suid Afrikaanse Nasionale Padogenskop Beperk
The South African National Roads Agency Limited

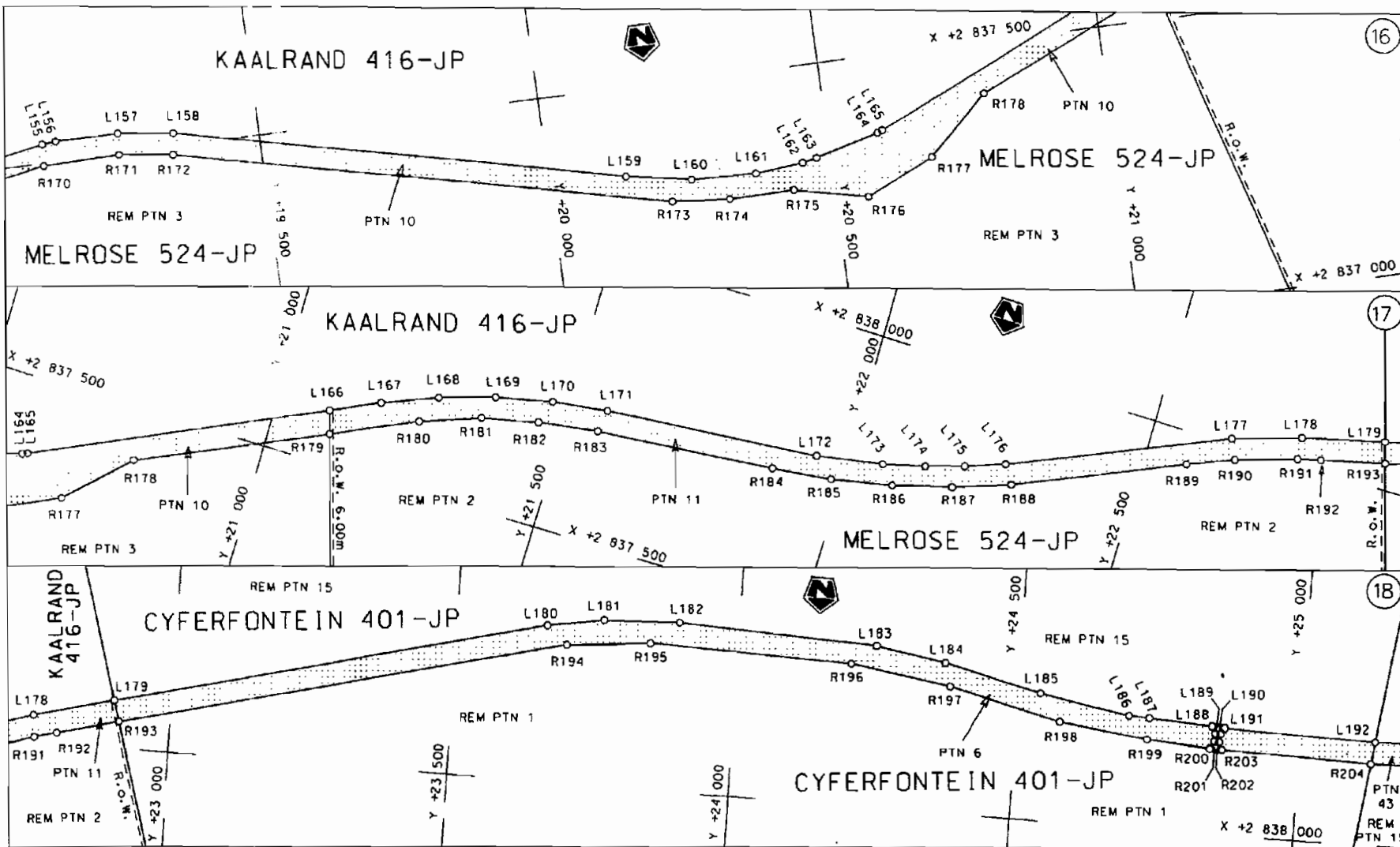
Die figuur getoon
The figure shown

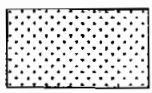


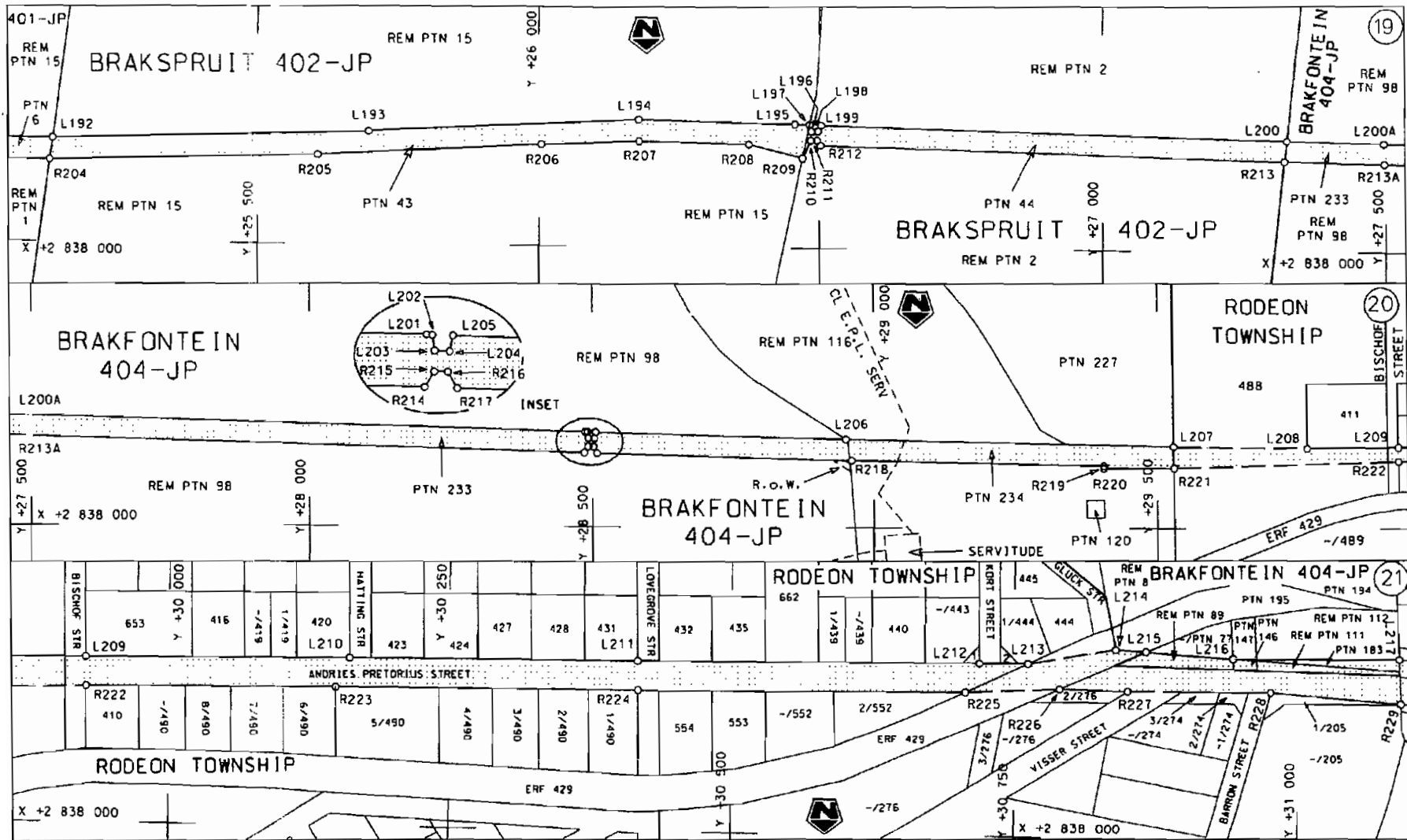
steldie padreserwe voor van 'n gedeelte
represents the road reserve of a portion
van Nasionale Roete N4 Seksie 14
of National Route Section

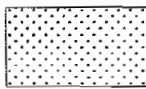
Vel Sheet 5 van of 18
Plan P577/06

D.O.9.A

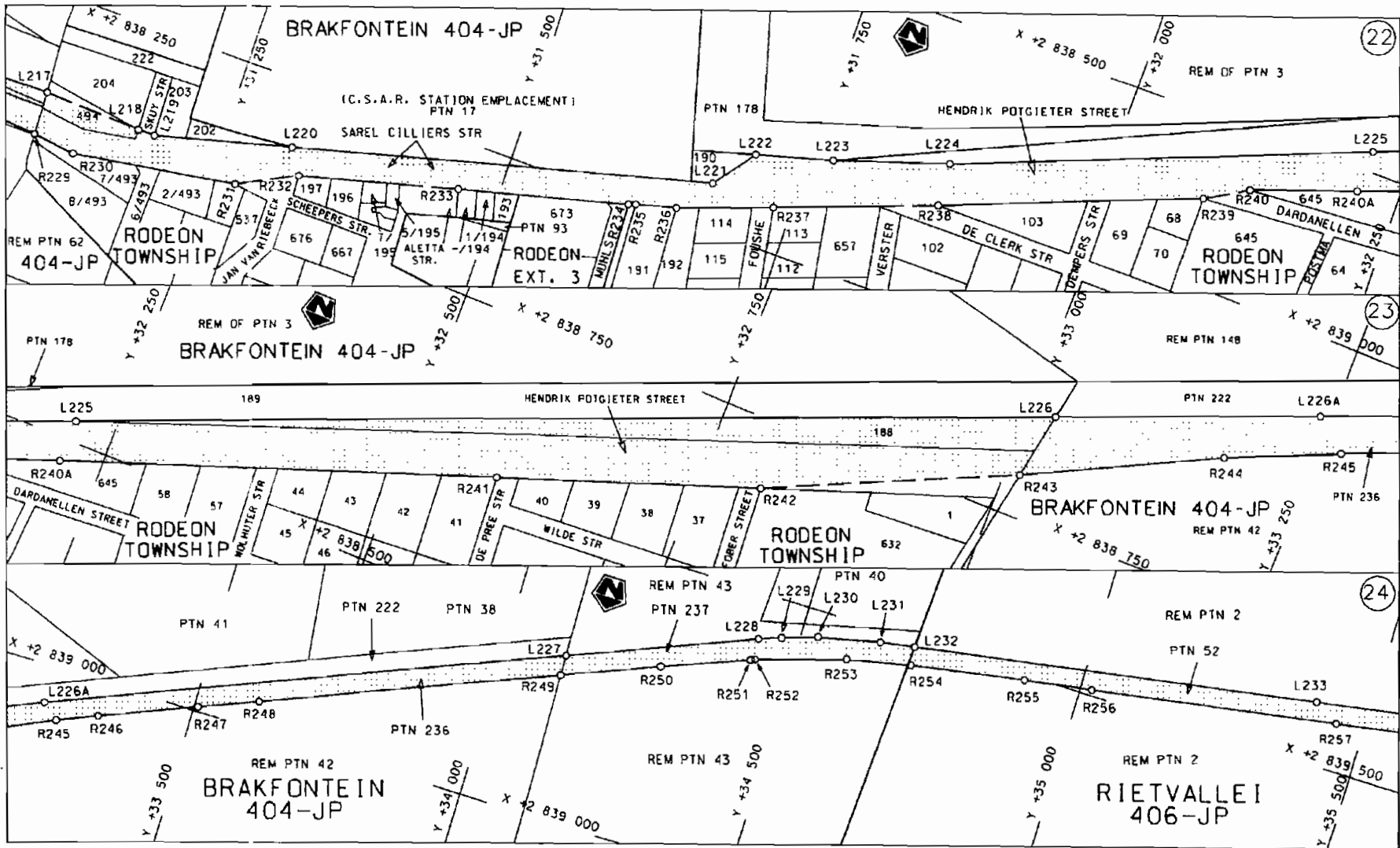


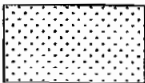
<p>Die Suid Afrikaanse Nasionale Padogenskap Beperk The South African National Roads Agency Limited</p>	<p>Die figuur getoon The figure shown</p> 	<p>steldie padreserwe voor van 'n gedeelte represents the road reserve of a portion van Nasionale Roete N4 Seksie of National Route Section</p> <p style="text-align: right;">14</p>	<p>Vel Sheet 6 van 18 of of</p> <p>Plan P577/06</p>
---	--	--	---

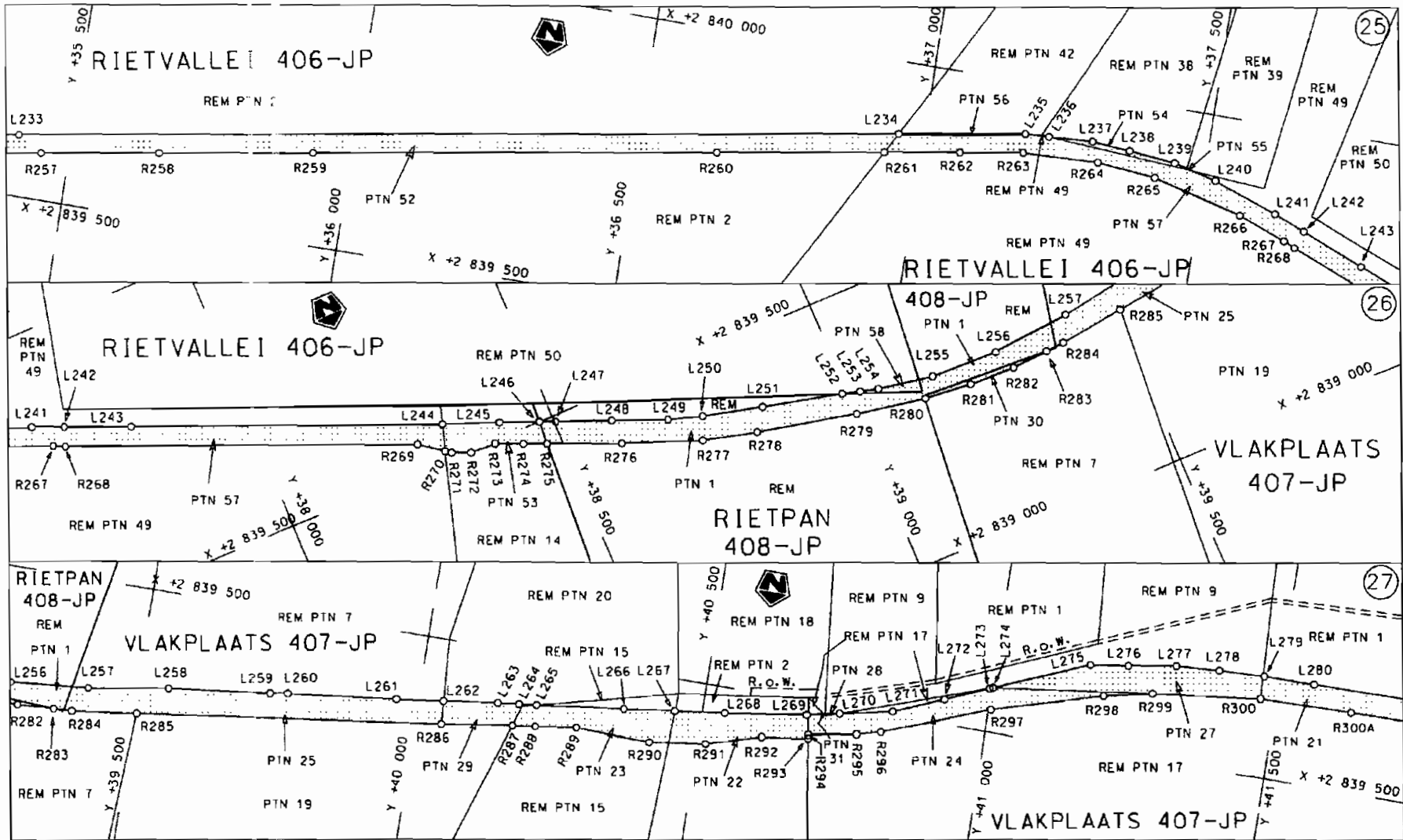


Die Suid Afrikaanse Nasionale Padogenskap Beperk	Die figuur getoon	 steldie padreserwe voor van 'n gedeelte represents the road reserve of a portion van Nasionale Roete N4 Seksie 14 of National Route	Vel Sheet 7 van 18
The South African National Roads Agency Limited	The figure shown		Plan P577/06

D.O.9.A

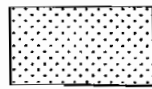


<p>Die Suid Afrikaanse Nasionale Padagentskap Beperk The South African National Roads Agency Limited</p>	<p>Die figuur getoon The figure shown</p> 	<p>steldie padreserwe voor van 'n gedeelte represents the road reserve of a portion van Nasionale Roete N4 Seksie 14 of National Route Section</p>	<p>Vol Sheet 8 van 18 of of Plan P577/06</p>
--	--	--	--



Die Suid Afrikaanse Nasionale Padogenskap Beperk
The South African National Roads Agency Limited

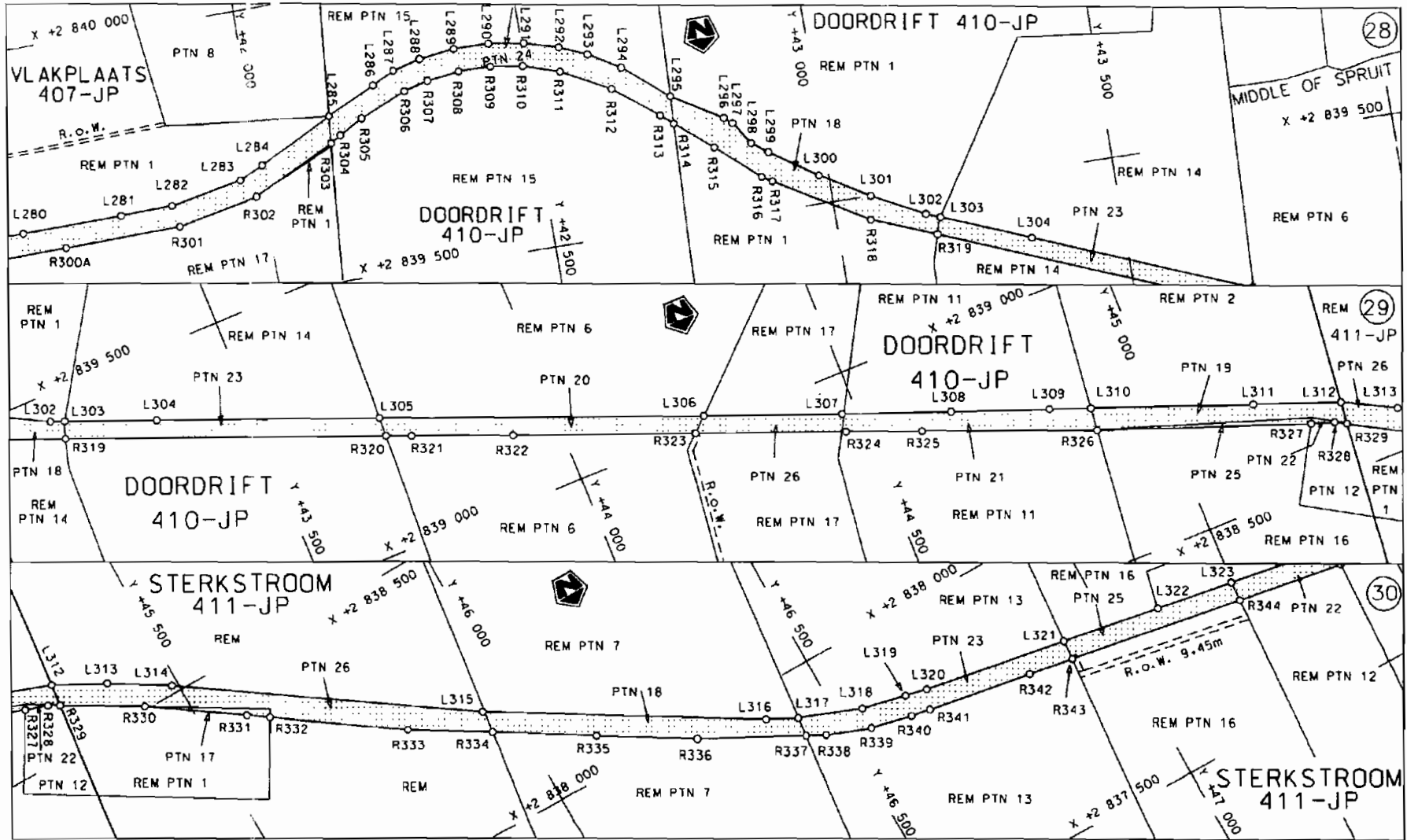
Die figuur getoon
The figure shown

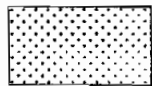


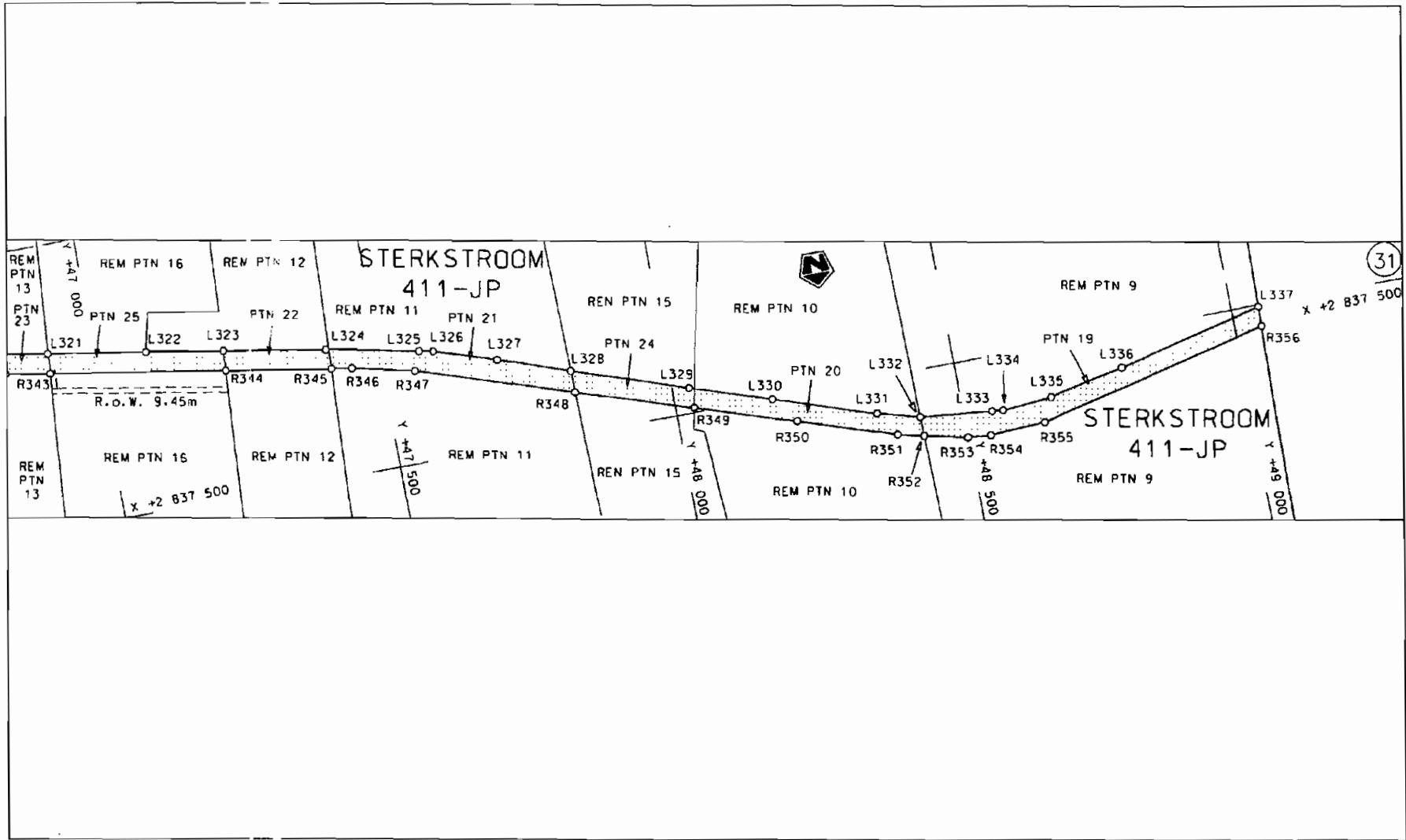
steldie padreserwe voor van 'n gedeelte
represents the road reserve of a portion
van Nasionale Roete N4 Seksie 14
of National Route N4 Section 14


Vel Sheet 9 van 18
Plan P577/06

D.O.9.A



<p>Die Suid Afrikaanse Nasionale Padogenskap Beperk The South African National Roads Agency Limited</p>	<p>Die figuur getoon The figure shown</p> 	<p>steldie podreserwe voor van 'n gedeelte represents the road reserve of a portion van Nasionale Roete N4 of National Route N4</p> <p>Seksie Section 14</p>	<p>Vel Sheet 10 van of 18 Plan P577/06</p>
---	--	--	--



<p>Die Suid Afrikaanse Nasionale Padagentskap Beperk The South African National Roads Agency Limited</p>	<p>Die figuur getoon The figure shown</p> 	<p>steldie padreserwe voor van 'n gedeelte represents the road reserve of a portion van Nasionale Roete N4 of National Route N4</p> <p>Seksie 14 Section 14</p>	<p>Vel Sheet 11 van of 18 Plan P577/06</p>
--	--	---	--

PADRESERWE KOQRDINATE / ROAD RESERVE CO-ORDINATES						
L1NKERKANT/LEFT HAND SIDE				REGTERKANT/RIGHT HAND SIDE		
	Y	X	WG27°		Y	X
L1	-13829.414	2836387.181	R1	-13807.481	2 836 352.883	
L2	-13605.535	2836415.051	R2	-13686.111	2836367.795	
L3	-13313.085	2 836 451.560	R3	-13660.992	2836370.789	
L4	-13199.003	2 836 482.389	R4	-13312.733	2 836 414.343	
L5	-13134.415	2 836 508.445	R5	-13153.599	2 836 459.652	
L6	-13110.428	2 836 518.913	R6	-13063.103	2836501.376	
L7	-13079.901	2836537.055	R7	-12 983.751	2 836 552.786	
L8	-13007.015	2 836 582.216	R8	-12864.505	2836642.350	
L9	-12974.978	2 836605.096	R9	-12780.873	2 836 695.839	
L10	-12 862.942	2836689.707	R10	-12715.593	2 836 726.271	
L11	-12762.581	2836746.022	R11	-12610.628	2 836 763.251	
L12	-12655.819	2 836 787.366	R12	-12 560.004	2836771.197	
L13	-12518.160	2 836 815.552	R13	-12436.297	2836777.081	
L14	-12404.389	2836817.887	R14	-12 385.326	2836779.513	
L15	-11834.139	2 836 779.889	R15	-12318.174	2836777.115	
L16	-11 756.665	2836774.937	R16	-12161.597	2 836 764.864	
L17	-11 473.024	2 836 755.292	R17	-11 980.881	2 836 752.952	
L18	-10 839.282	2 836 754.497	R18	-11 801.523	2836740.339	
L19	-10417.998	2 836 754.463	R19	-11461.105	2836717.622	
L20	-10 057.948	2 836 754.030	R20	-10814.916	2836717.657	
L21	-9 867.170	2 836 753.671	R21	-10 399.702	2836716.765	
L22	-9 597.587	2 836 752.326	R22	-10 034.426	2 836 716.407	
L23	-9317.605	2 836 751.642	R23	-9353.679	2 836 714.830	
L24	-9 025.554	2836750.485	R24	-9 021.046	2836713.770	
L25	-8 727.467	2 836 750.005	R25	-8 723.526	2 836 712.879	
L26	-8 427.550	2836748.843	R26	-8 417.788	2836711.843	
L27	-8117.676	2836748.217	R27	-8115.004	2 836 711,371	
L28	-7 797.296	2836747.009	R28	-8 078.105	2836710.784	
L29	-7 475.365	2836746.333	R29	-6938.155	2836707.487	
L30	-6845.733	2836744.087	R30	-5 316.601	2836702.733	
L31	-5 200.230	2836739.495	R31	-5 287.770	2 836 703.561	
L32	-4988.141	2836738.748	R32	-5 210.731	2 836 702.421	
L33	-4060.112	2836738.247	R33	-4 818.635	2 836 701.014	
L34	-3 856.266	2836738.150	R34	-4762.425	2 836 687.654	
L35	-3 676.873	2 836 727.903	R35	-4745.057	2 836 687.587	
L36	-3 557.126	2836 704.094	R36	-4702.513	2836700.598	
L37	-3 499.734	2 836 691.883	R37	-4 405.357	2 836 700.387	
L38	-3 235.400	2836627.770	R38	-4 047.721	2 836 701.011	
L39	-3148.710	2836607.280	R39	-3 860.631	2 836 701.927	
L40	-3 055.060	2836591.290	R40	-3 722.586	2 836 696.220	
L41	-2939.770	2 836 591.860	R41	-3 587.598	2836675.124	
L42	-2 688.230	2 836 632.440	R42	-3295.770	2836603.590	
L43	-2 550.108	2836659.998	R43	-3 101.910	2 836 556.030	
L44	-2 522.450	2 836 663.070	R44	-2961.100	2 836 552.240	
L45	-2 485.750	2 836 668.480	R45	-2 589.990	2836615.050	
L46	-2 455.650	2 836 670.500	R46	-2 562.570	2836620.170	
L47	-2350.030	2 836 673.500	R47	-2510.350	2836629.910	
L48	-2 262.250	2 836 658.070	R48	-2378.540	2 836 639.330	
L49	-2175.200	2 836 638.020	R49	-2253.200	2836620.130	
L50	-1 952.920	2836579.190	R50	-2164.810	2 836 596.890	
L51	-1 196.700	2836379.600	R51	-1943.100	2836538.110	

Vel	12	Van	18	P577106
Sheet		of		

PADRESERWE KOORDINATE / ROAD RESERVE CO-ORDINATES						
L1NKERKANT/LEFT HAND SIDE			REGTERKANT/RIGHT HAND SIDE			
	Y	X	WG27		Y	X
L52	- 1 150.900	2836367.580	R52	- 1 252.830	2836356.150	
L53	- 703.290	2836250.150	R53	-1211.650	2 836 330.480	
L54	- 590.580	2836220.680	R54	- 1 214.530	2836313.120	
L55	- 424.990	2836177.310	R55	- 1 190.580	2 836 308.370	
L56	- 235.610	2836137.660	R56	-1187.790	2836324.180	
L57	- 141.580	2836 102.310	R57	-1141.810	2836326.910	
L58	315.760	2 835 981.070	R58	- 712.810	2 836 213.990	
L59	483.380	2 835 937.660	R59	- 715.170	2 836 205.040	
L60	535.230	2 835 926.990	R60	- 403.710	2 836 124.040	
L61	573.350	2 835 923.630	R61	- 250.820	2 836 082.540	
L62	1087.100	2 835 848.080	R62	- 151.170	2 836 065.920	
L63	1 182.910	2 835 834.430	R63	460.980	2 835 904.640	
L64	1 278.920	2 835 820.870	R64	534.260	2 835 891.600	
L65	1 296.060	2835819.040	R65	585.460	2 835 883.960	
L66	1 363.290	2835815.980	R66	891.070	2 835 838.400	
L67	1 609.260	2835815.790	R67	1097.140	2835808.720	
L68	1 728.380	2835815.760	R68	1 181.430	2 835 797.610	
L69	1 789.300	2835816.270	R69	1 286.00	2 835 783.140	
L70	1 878.970	2835829.120	R70	1353.670	2835779.110	
L71	2386.740	2 835 949.660	R71	1 580.540	2 835 778.840	
L72	2449.190	2835963.320	R72	1759.560	2835779.190	
L73	2517610	2 835 975.100	R73	1 821.730	2 835 782.660	
L74	2601.540	2 835 980.590	R74	1887.200	2 835 793.550	
L75	2612.260	2 835 979.370	R75	1 891.820	2835794.790	
L76	2942.420	2 835 954.210	R76	1 890.530	2 835 798.280	
L77	3024.030	2 835 957.650	R77	1985.150	2 835 821.120	
L78	3289.450	2 835 981.170	R78	2218.100	2 835 870.880	
L79	3378.790	2835987.500	R79	2268.500	2 835 882.780	
L80	3553.270	2 835 977.110	R80	2460.440	2835928.130	
L81	3584.120	2 835 959.200	R81	2522.600	2 835938.780	
L82	3607.930	2 835 937.550	R82	2593.020	2 835 942.980	
L83	3631.120	2 835 930.630	R83	2620.340	2 835 942.490	
L84	3649.440	2 835 934.600	R84	2943.940	2835916.790	
L85	3931.930	2 835 806.090	R85	2951.230	2835916.540	
L86	4050.730	2835751.530	R86	3271.490	2 835 943.080	
L87	4495.360	2 835 548.450	R87	3279.260	2 835 944.800	
L88	4935.480	2835347.420	R88	3334.980	2835949.260	
L89	4998.850	2835325.760	R89	3395.160	2 835 948.540	
L90	5165.280	2 835 285.970	R90	3451.840	2 835 945.540	
L91	5223.960	2 835281.580	R91	3505.620	2 835 936.680	
L92	5272.910	2835277.990	R92	3552.920	2 835 926.500	
L93	5386.390	2835283440	R93	3559.800	2 835 924.690	
L94	5412.100	2 835 288.370	R94	3585.840	2835916.180	
L95	5576.890	2 835 327.460	R95	3615.520	2 835 906.480	
L96	6505.720	2 835 638.640	R96	3634.170	2 835 899.260	
L97	7136210	2 835 849.870	R97	3671.610	2835884.770	
L98	7517.830	2835977.720	R98	3971.380	2 835747.620	
L99	7524.930	2 835 971.030	R99	4463.200	2 835 522.610	
L100	7539.960	2835975.100	R100	4552.960	2 835 481.540	
L101	7542.620	2 835 985.820	R101	4823.820	2835357.620	
L102	8210.490	2 836 209.400	R102	4887050	2 835 328.600	

Vel	13	Van	18	P577/06
Sheet		of		

PADRESERWE KOORDINATE / ROAD RESERVE CO-ORDINATES					
L1NKERKANT/LEFT HAND SIDE			REGTERKANT/RIGHT HAND SIDE		
	Y	X	WG27	Y	X
L103	8741.240	2836409.460	R103	5058.210	2835268.370
L104	8776.690	2836437.710	R104	5123.790	2 835 254.510
L105	8812.820	2 836449.430	R105	5236.820	2835242970
L106	8853.200	2836449.150	R106	5417.840	2 835 252.440
L107	9296.400	2836567.900	R107	5593.070	2 835 294.370
L108	9905.330	2836734.070	R108	5593.770	2835294.210
L109	10025.660	2 836 754.460	R109	6638.940	2835644.310
L110	10105.730	2836758.990	R110	7269.560	2 835 855.550
L111	10115.140	2 836 758.680	R111	7527.690	2 835 942.010
L112	10185.920	2836756.310	R112	7531.790	2 835 956.070
L113	10675.530	2 836 721.830	R113	7540.960	2 835 958.880
L114	11 796.210	2 836 642.890	R114	7549.740	2 835 949.470
L115	12305.050	2836607.060	R115	8061.710	2 836 120.220
L116	12352.610	2836603.710	R116	8207.210	2836171.310
L117	12513.510	2836597.040	R117	8337.780	2836214.220
L118	12522.040	2836597.740	R118	8817.600	2 836400.080
L119	12585.840	2836604.560	R119	9301.840	2 836 532.800
L120	12653.200	2836616.710	R120	9855.710	2 836684.590
L121	12719.510	2 836633.800	R121	10027.490	2836718.710
L122	12803.420	2 836 660.280	R122	10083.590	2836721.720
L123	12896.120	2836699.470	R123	10263.730	2836713.570
L124	13088.700	2836759.070	R124	11194.970	2 836 649.890
L125	13185.220	2 836 779.630	R125	12305.510	2 836 573.960
L126	13210.450	2836787.580	R126	12311.920	2 836 568.880
L127	13220.070	2 836 778.380	R127	12330.830	2 836 564.630
L128	13229.430	2836781.200	R128	12487.460	2836560.310
L129	13231.850	2 836 794.170	R129	12665.210	2836581.140
L130	13475.930	2 836 870.120	R130	12761.940	2836609380
L131	13579.250	2 836 898.660	R131	12814.450	2836624.710
L132	13655.540	2836912.920	R132	12912.920	2 836 645.050
L133	13794.290	2 836 932.280	R133	13103.880	2 836 704.840
L134	15217.900	2837124.470	R134	13 151.690	2836725.010
L135	15250.480	2837 118.780	R135	13219.860	2836747.610
L136	15276.670	2 837 121.030	R136	13224.040	2 836765.180
L137	15300.990	2 837 135.300	R137	13233.410	2 836767.930
L138	15452.840	2837156.150	R138	13245.400	2 836 756.030
L139	15550.940	2 837 178.230	R139	13400.130	2836807.530
L140	15649.840	2 837 191.980	R140	13498.210	2 836 838.560
L141	15750.030	2 837 196.350	R141	13628.920	2 836 870.070
L142	15959.440	2837224.550	R142	13726.220	2 836 885.460
L143	16485.400	2 837 295.360	R143	15243.840	2 837 092.020
L144	16490.930	2 837 285.430	R144	15257.720	2837 101.780
L145	16499.690	2837286.380	R145	15278.170	2 837 104.240
L146	16502.520	2837297.650	R146	15291.750	2 837 098.620
L147	16721.670	2837326.730	R147	15524.310	2 837 128.090
L148	16796.620	2837332.980	R148	15531.760	2 837 118.990
L149	18020.780	2837359.710	R149	15568.190	2837073.190
L150	18 137.850	2 837 387.960	R150	15717.190	2837092.000
L151	18 186.250	2837416.240	R151	15716.690	2837 143.620
L152	18273.800	2 837 535.360	R152	15759.450	2837 159.880
L153	18273.070	2837374.800	R153	15949.690	2837185.540

Vel 14 Van 18
Sheet of

P577/06

PADRESERWE KOORDINATE / ROAD RESERVE CO-ORDINATES						
L1NKERKANT/LEFT HAND SIDE				REGTERKANT/RIGHT HAND SIDE		
	Y	X	WG27		y	X
L154	18945.330	2 837 502.380		R154	16489.630	2 837 258.350
L155	19111.952	2837533.946		R155	16492.180	2 837 270.560
L156	19135.931	2 837 535.986		R156	16502.180	2837271.970
L157	19249.350	2 837 535.655		R157	16508.140	2837260.850
L158	19347.609	2 837 522.855		R158	16721.860	2 837 288.400
L159	20136.468	2837342.881		R159	16796.170	2 837294.810
L160	20251.066	2837322.571		R160	16940.060	2837299.810
L161	20365.685	2837318.730		R161	17119.360	2 837 303.790
L162	20450.324	2 837 327.049		R162	17162.200	2 837 290.430
L163	20475.833	2 837 332.289		R163	17187.970	2837290.990
L164	20588.902	2 837 363.698		R164	17238.160	2837306.740
L165	20597.822	2837367.068		R165	17287.210	2 837 308.850
L166	21095.678	2837593.541		R166	18135.210	2 837 325.000
L167	21 182.537	2 837 633.050		R167	18261.620	2 837 336.950
L168	21277.056	2 837 670.969		R168	18316.290	2 837 345.020
L169	21372.765	2 837 700.468		R169	18955.580	2837467.490
L170	21 470.814	2 837721.897		R170	19109.060	2 837 495.390
L171	21567.993	2 837 735.476		R171	19246.050	2837497.410
L172	21945.768	2837767.473		R172	19341.800	2837484.910
L173	22061.917	2837787.382		R173	20211.870	2837287.940
L174	22135.036	2837805.541		R174	20313.670	2 837 279.300
L175	22201.385	2 837 825.831		R175	20428.060	2837280.890
L176	22269.785	2 837 850.660		R176	20557.460	2837251.800
L177	22637.571	2838010.125		R177	20678.190	2 837 308.170
L178	22754.510	2838047.104		R178	20784.020	2837409.690
L179	22897.469	2 838082.932		R179	21 106.960	2 837 553.800
L180	23659.050	2838271.760		R180	21 255.500	2837620.650
L181	23758720	2 838 289.050		R181	21 358.900	2837658.210
L182	23893.080	2 838 294.890		R182	21 456.790	2 837 679.820
L183	24244.750	2 838 282.380		R183	21 561.790	2 837 695.960
L184	24367.840	2 838 262.690		R184	21877.160	2 837 723.670
L185	24539.380	2838222.710		R185	21 982.010	2 837 734.980
L186	24697.520	2838196.170		R186	22088.820	2 837 756.140
L187	24733.550	2838195.060		R187	22190.470	2837783.720
L188	24844.900	2 838 189.800		R188	22289.470	2837818390
L189	24850.900	2838178.160		R189	22573800	2 837 943.600
L190	24860.650	2838177.890		R190	22652.950	2837976.110
L191	24867.020	2838188.840		R191	22758.090	2838009.220
L192	25132.980	2 838 184.660		R192	22797.620	2 838 019.280
L193	25699.000	2 838 201.370		R193	22908.220	2838 046.630
L194	26177.800	2838226.660		R194	23695.570	2 838 241.350
L195	26456.920	2838220.970		R195	23843.110	2 838 255.890
L196	26482.960	2838220.120		R196	24201.890	2 838 248.040
L197	26486.500	2 838 208.500		R197	24378.870	2 838 222.050
L198	26497.570	2 838 208.490		R198	24577.010	2838175.950
L199	26503.300	2838219.070		R199	24731.900	2838157710
L200	27324.590	2838198.170		R200	24843.320	2838151.140
L201	28487.020	2 838 168.600		R201	24850.400	2838163.800
L202	28491.200	2838 168.420		R202	24859.350	2838163.250
L203	28492.830	2838157.470		R203	24864.580	2838150.790
L204	28503.390	2838157.010		R204	25127.870	2838146.760

Vel	15	Van	18	P577/06
Sheet		of		

PADRESERWE KOORDINATE / ROAD RESERVE CO-ORDINATES					
L1NKERKANT/LEFT HAND SIDE			REGTERKANT/RIGHT HAND SIDE		
	Y	X	WG27	y	X
L205	28505,850	2 838 168,080	R205	25609,110	2 838 159,300
L206	28950.390	2 838 156.630	R206	26004,870	2838181.160
L207	29528.940	2 838 145,220	R207	26178,870	2 838 188,790
L208	29764.892	2838 143,121	R208	26375,030	2838185,100
L209	29925.460	2 838 144.958	R209	26470.410	2 838 160,980
L210	30161.584	2838 147.663	R210	26485.130	2 838 192,810
L211	30416.610	2838150.584	R211	26496.110	2838192.500
L212	30718.856	2838154.046	R212	26501.790	2 838 183.790
L213	30761.931	2838154.543	R213	27320.770	2 838 162.350
L214	30838.901	2838 167.735	R214	28485.500	2 838 131.860
L215	30865.480	2838166,195	R215	28492.430	2838 142.960
L216	30942.614	2838161,762	R216	28502,110	2 838 142.840
L217	31 089,326	2838163,547	R217	28508.710	2838131.210
L218	31 177.614	2838160.054	R218	28960.680	2838119.820
L219	31 192,736	2838160,083	R219	29405.840	2838111,090
L220	31 312.275	2 838 192,052	R220	29405.370	2 838 106,680
L221	31 675,792	2838290,705	R221	29529.310	2838107,540
L222	31 703,502	2838327,632	R222	29925.747	2838119,773
L223	31769.720	2 838 346.277	R223	30149.351	2 838 122.333
L224	31 867.291	2 838 378.807	R224	30416.898	2838 125,398
L225	32214.691	2838517.954	R225	30706.571	2838 128,873
L226	33023.852	2 838 846,853	R226	30789.803	2838133.037
L227	34110.300	2839289110	R227	30849.689	2 838 132,089
L228	34430.030	2839420260	R228	30975.827	2 838 133.230
L229	34469.110	2 839434.120	R229	31 090.897	2 838 124.986
L230	34530.360	2 839454.370	R230	31 129.279	2838120.630
L231	34638.520	2839478.730	R231	31 274.612	2 838 144.409
L232	34698.430	2 839488.860	R232	31326.004	2 838 170.698
L233	35405,260	2839608.910	R233	31464.948	2 838 208.279
L234	36954.650	2 839 873.460	R234	31 611.002	2 838 247.509
L235	37176.550	2 839 910.400	R235	31 616.927	2 838 249.530
L236	37218.560	2839912.590	R236	31 652,377	2 838 259,152
L237	37296.200	2839916.750	R237	31 733.760	2838289,021
L238	37362.820	2 839 911.270	R238	31 869942	2 838 340,524
L239	37445.170	2 839 903.390	R239	32087.432	2838427.152
L240	37521.190	2 839 883.990	R240	32123745	2 838 448.462
L241	37633.700	2 839 842.540	R241	32582.600	2838611.647
L242	37688.020	2 839 819.950	R242	32804.650	2838690.616
L243	37799.530	2 839773.690	R243	33012.940	2838787.140
L244	38315.810	2 839 561.880	R244	33175.030	2 838 869.330
L245	38409.940	2 839 525.840	R245	33269.670	2838911.410
L246	38475.940	2 839499.960	R246	33340.000	2 838 940.480
L247	38502.940	2 839489.350	R247	33506.760	2 839 008.530
L248	38596.050	2839452.780	R248	33607.910	2839049,070
L249	38688.620	2 839415.560	R249	34 110.990	2839253.790
L250	38748.150	2839396.780	R250	34 276,450	2839 321,160
L251	38853.230	2839369.930	R251	34 427.480	2839380.310
L252	38992.650	2 839 335.550	R252	34 434.790	2839383,310
L253	39023.510	2 839 326.960	R253	34590,170	2839431.800
L254	39054.850	2839318.450	R254	34701.350	2 839 455.870
L255	39152.200	2839301.310	R255	34900.790	2 839 490,840

Vel	16	Van	18	P577/06
Sheet		of		

PADRESERWE KOORDINATE / ROAD RESERVE CO-ORDINATES					
L1NKERKANT/LEFT HAND SIDE			REGTERKANT/RIGHT HAND SIDE		
	Y	X	WG27	Y	X
L256	39271.680	2 839 296.380	R256	35020.230	2839510.090
L257	39411.920	2 839 308.540	R257	35449.440	2 839 583.520
L258	39553.590	2 839 331.230	R258	35658.640	2839618.760
L259	39735.340	2 839 352.970	R259	35932.070	2 839 665.530
L260	39768.270	2 839 358.130	R260	36640.950	2839786.830
L261	39960.960	2 839 380.970	R261	36934.510	2 839836.540
L262	40044.160	2839391.750	R262	37066.610	2 839 858.660
L263	40139.510	2839404.790	R263	37177.730	2 839 876.400
L264	40176.580	2 839408.870	R264	37310.840	2 839 881.610
L265	40207.630	2839412.580	R265	37414.180	2 839 871.470
L266	40361.680	2839432380	R266	37573.340	2 839 829.920
L267	40451.120	2 839 443.770	R267	37656.710	2839797.220
L268	40539.510	2 839 455.350	R268	37676.870	2 839787.890
L269	40684.220	2 839 476.030	R269	38261.580	2839546.710
L270	40741.640	2839487.840	R270	38301.930	2839516.600
L271	40833.700	2839507.120	R271	38311790	2839510.090
L272	40920.500	2 839 542.940	R272	38343.800	2 839496.870
L273	40996.130	2 839 575.260	R273	38388.910	2 839494.730
L274	41 002.250	2 839 577.360	R274	38434.910	2 839475.520
L275	41166.420	2839645.940	R275	38473.830	2 839459.680
L276	41233.170	2839654.970	R276	38597.170	2 839409.340
L277	41 317.090	2 839669.060	R277	38731.850	2 839 358.450
L278	41 393.390	2839673.760	R278	38826.980	2 839 333.990
L279	41 473.050	2839676.170	R279	39003.130	2 839 294.070
L280	41561.710	2 839676.620	R280	39125.230	2 839271.140
L281	41 741.780	2 839 678.680	R281	39208.980	2 839 262.680
L282	41 835.030	2 839 681.370	R282	39290.600	2 839 259.360
L283	41962.840	2 839 705.940	R283	39355.850	2 839 262.860
L284	42005.730	2 839 725.690	R284	39388.980	2 839 264.640
L285	42139.790	2839791.780	R285	39504.830	2 839 279.350
L286	42226.910	2 839 833.180	R286	40046.620	2839351.750
L287	42266.680	2 839 852.360	R287	40170.850	2 839 370.650
L288	42316.730	2 839 864.850	R288	40211.110	2839375.810
L289	42379.570	2 839 872.690	R289	40283.240	2 839 386.090
L290	42442.240	2 839 871.970	R290	40414.770	2 839 382.950
L291	42504.360	2 839 863.150	R291	40513.900	2839396.750
L292	42564.840	2 839 846.120	R292	40610.960	2 839425.190
L293	42612.970	2839825.760	R293	40693.270	2 839 436.050
L294	42667.460	2 839 794.430	R294	40692.250	2 839 442.850
L295	42744.850	2 839 730.920	R295	40776.770	2 839457.850
L296	42832.332	2 839 677.697	R296	40818.420	2 839 468.710
L297	42846.133	2839666.251	R297	41 004.220	2 839 539.560
L298	42873.014	2 839 626.262	R298	41 198.160	2 839 595.930
L299	42900.808	2 839 605.373	R299	41 283.000	2839614.240
L300	42982.461	2839550.068	R300	41472.640	2 839 636.650
L301	43067.522	2 839 500.325	R301	41 842.300	2 839643.060
L302	43158.118	2 839453.022	R302	41 986.650	2839672.770
L303	43182.300	2 839443.690	R303	42 135.870	2 839743.900
L304	43336.220	2 839 382.590	R304	42 155.040	2 839 755.220
L305	43708.790	2 839234.480	R305	42197.190	2 839 778.830
L306	44243.870	2839021.570	R306	42280.410	2 839 814.040

Vel 17 Van 18 P577/06
Sheet of 1

PADRESERWE KOORDINATE / ROAD RESERVE CO-ORDINATES					
L1NKERKANT/LEFT HAND SIDE			REGTERKANT/RIGHT HAND SIDE		
	Y	X	WG27	Y	X
L307	44473.630	2838931.770	R307	42324.320	2 839 825.650
L308	44653.370	2838863.730	R308	42381620	2839832.770
L309	44817.170	2 838 802.670	R309	42438.930	2 839 832.270
L310	44886.190	2838776640	R310	42495.970	2 839 824.030
L311	45155.250	2838675.110	R311	42559.920	2 839 804.450
L312	45299.980	2838620.750	R312	42644.490	2 839 760.370
L313	45389.350	2838573.900	R313	42721.120	2839700140
L314	45488.820	2 838 513.800	R314	42742.990	2839682.020
L315	45952.420	2 838 201.780	R315	42807.005	2 839628.896
L316	46386.570	2837945.750	R316	42881.664	2 839 563.670
L317	46438.330	2837919.710	R317	42899.291	2 839 552.822
L318	46545.880	2837879.120	R318	43060.428	2 839 458.390
L319	46623.980	2 837 861.690	R319	43172.150	2839414.760
L320	46662130	2837853160	R320	43707.300	2 839 201.370
L321	46916.380	2837810.030	R321	43750.000	2839184.110
L322	47090.870	2 837 780.440	R322	43917.450	2 839 117.130
L323	47227.510	2837757.440	R323	44218.860	2 838 998.880
L324	47408.520	2 837 725.940	R324	44468.610	2 838 900.460
L325	47570.550	2 837692.960	R325	44593.420	2838851.340
L326	47595.060	2 837687.540	R326	44881.740	2 838 736.670
L327	47703.760	2 837 653.150	R327	45236.970	2 838 606.010
L328	47828.730	2 837611.010	R328	45276.660	2838592,800
L329	48030.060	2837544.140	R329	45295.780	2 838 582.100
L330	48172.800	2837497.370	R330	45428.550	2838505.770
L331	48350.800	2 837 438.220	R331	45580.310	2 838 403.170
L332	48424.720	2837418.510	R332	45614.410	2 838 379.730
L333	48550.810	2 837 405.240	R333	45820.250	2 838 239.250
L334	48570.290	2837403.270	R334	45950.520	2 838 162.530
L335	48659.270	2837410190	R335	46108.810	2838067.800
L336	48790.830	2837437.700	R336	46262.880	2 837 975.830
L337	49047.350	2837497.020	R337	46434.870	2837886.170
			R338	46466.580	2837869.780
			R339	46543.140	2837841.840
			R340	46615.640	2 837 825.440
			R341	46649.480	2837819.740
			R342	46835.090	2 837 788.500
			R343	46914.130	2837775.210
			R344	47225.180	2 837 722.890
			R345	47411.970	2837691.150
			R346	47447.980	2 837 685.020
			R347	47556.480	2 837 660.720
			R348	47829.420	2 837 573.220
			R349	48032.840	2837508.390
			R350	48208.730	2 837451.220
			R351	48379.730	2837 395.670
			R352	48425.220	2 837 385.210
			R353	48499.980	2 837 368.240
			R354	48541.000	2837364.510
			R355	48639.580	2 837 369.560
			R356	49046.460	2 837 462.430

Vel	18	Van	18	P577/06
Sheet		of		