

CONTENTS**INHOUD**

<i>No.</i>	<i>Page No.</i>	<i>Gazette No.</i>	<i>No.</i>	<i>Bladsy No.</i>	<i>Koerant No.</i>
GOVERNMENT NOTICE			GOEWERMENSKENNISGEWING		
Transport, Department of			Vervaer, Departement van		
<i>Government Notice</i>			<i>Goewermentskennisgewing</i>		
755			755		
South African National Roads Agency Limited and the National Roads Act (7/1998): The South African National Roads Agency Limited: Declaration amendment of National Road N4 Section 13: Amendment of Declaration No. 1010 of 1998	..	3	30204	..	4
					30204

**GOVERNMENT NOTICE
GOEWERMENTSKENNISGEWING**

**DEPARTMENT OF TRANSPORT
DEPARTEMENT VAN VERVOER**

No. 755

24 August 2007

**THE SOUTH AFRICAN NATIONAL ROADS
AGENCY LIMITED**

Registration No: 98/09584/06

DECLARATION AMENDMENT OF NATIONAL ROAD ~~N4~~ SECTION 13

AMENDMENT OF DECLARATION No. 1010 OF 1998

By virtue of section 40 (1)(b) of the South African National Roads Agency Limited and the National Roads Act, 1998 (Act NO.7 of 1998), I hereby amend Declaration No. 1010 of 1998, by substituting the descriptive section from the farm Elandsdrift 467 – JQ up to the farm Rietvly 271 - JQ with the subjoined sheets 1 to 17 of Plan P576/06.

(National Road N4 Section 13: Elandsdrift 467 - JQ to Rietvly - 271 - JQ)



MINISTER OF TRANSPORT

No. 755

24 Augustus 2007

DIE SUID-AFRIKAANSE NASIONALE PADAGENTSKAPBEPERK

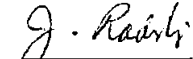
Registrasie No: 98/09584/06

VERKLARING WYSIGING VAN NASIONALE PAD N4 SEKSIE 13.

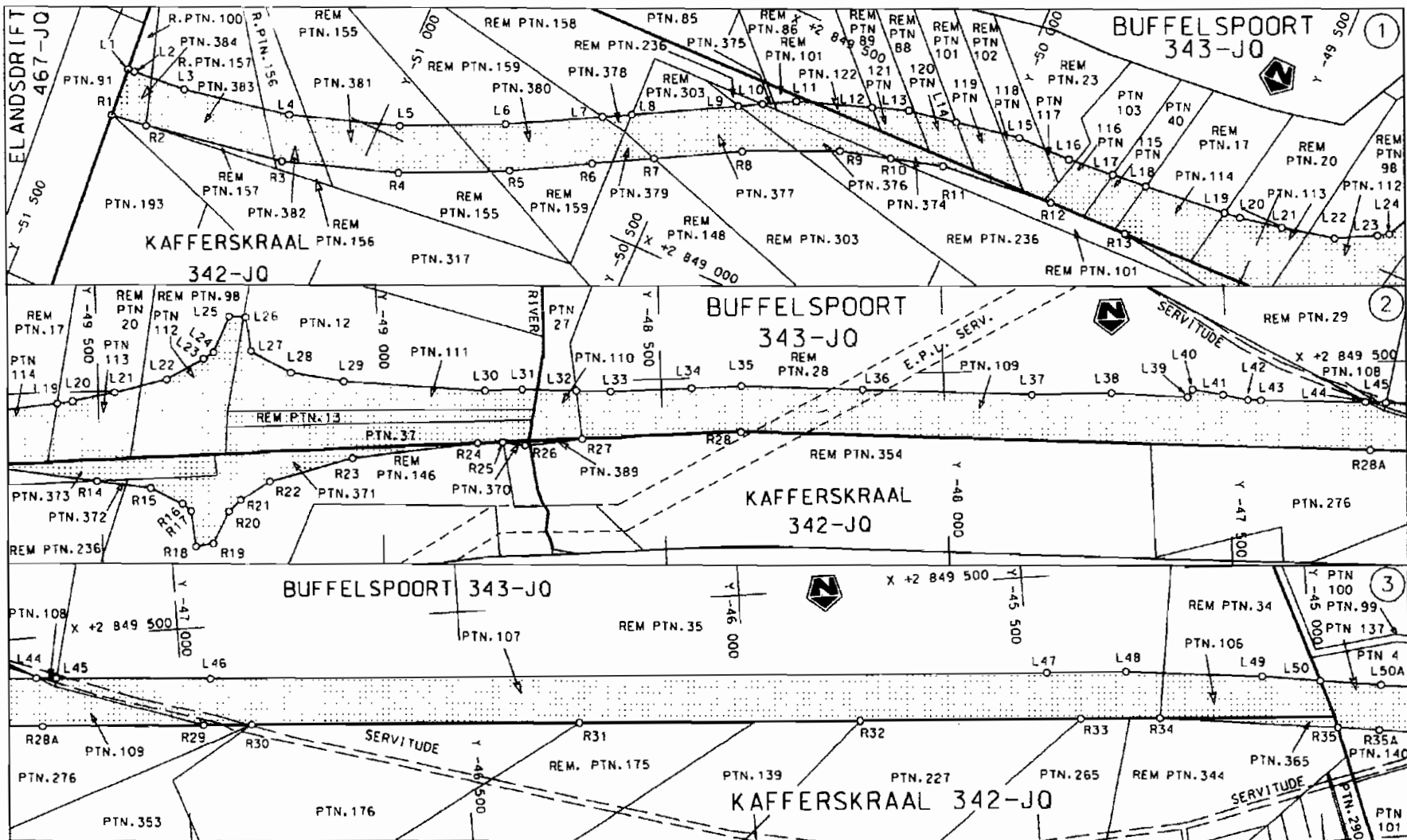
WYSIGING VAN VERKLARING NO. 1010 VAN 1998

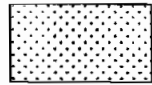
Kragtens Artikel40(1)(b) van die Suid Afrikaanse Nasionale Padagentskap Beperk en die Nasionale Paaie Wet, 1998 (Wet NO.7 van 1998), wysig ek hiermee Verklaring NO.1010 van 1998, deur die beskrywende gedeelte vanaf die plaas Elandsdrift 467 - JQ tot die plaas Rietvly 271 - JQ, te vervang met meegaande velie 1 tot 17 van Plan No. P576/06.

(Nasionale Pad N4 Seksie 13: Elandsdrift 467 - JQ tot Rietvly 271 - JQ)

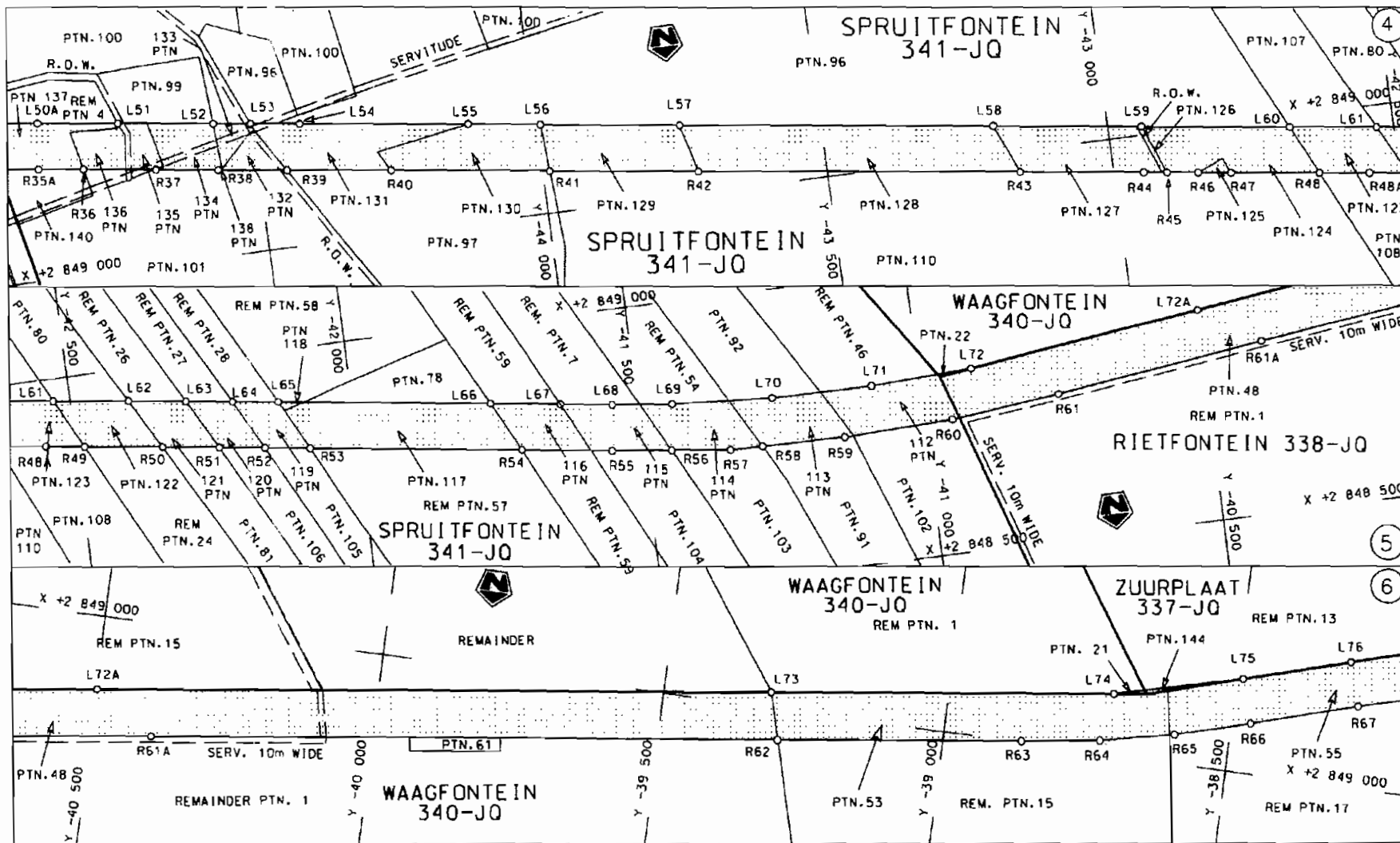



ISTE

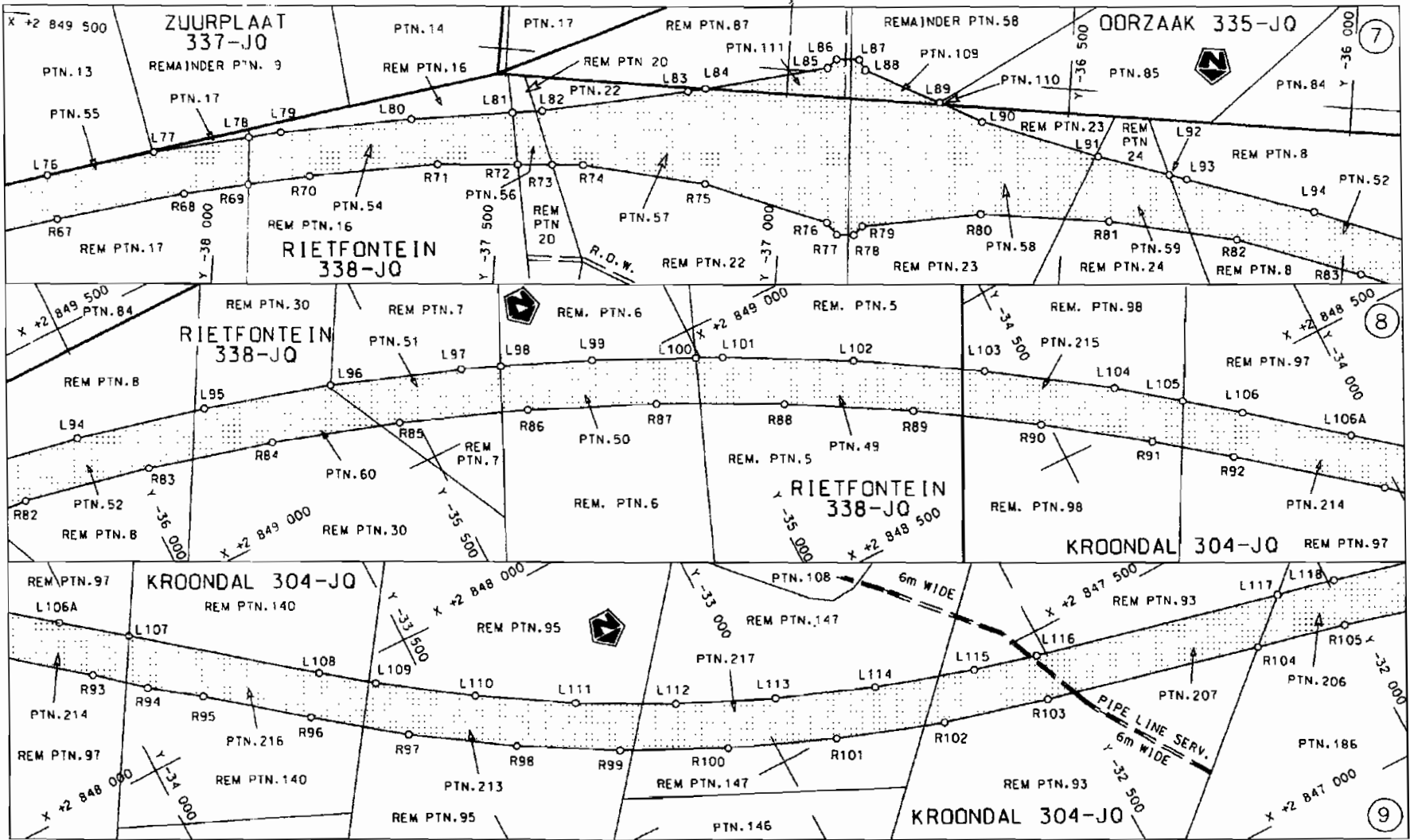


Die Suid Afrikaanse Nasionale Padagentskop Beperk	Die figuur getoon		steldie padreserwe voor van 'n gedeelte represents the road reserve of a portion	Vel Sheet 1 van of 17
The South African National Roads Agency Limited	The figure shown		van Nasionale Roete N4 Seksie 13 of National Route Section	Plan P576/06

D.O.9.A

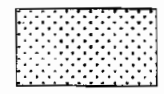


<p>Die Suid Afrikaanse Nasionale Padagentskap Beperk The South African National Roads Agency Limited</p>	<p>Die figuur getoon The figure shown</p> 	<p>steldie padreserwe voor van 'n gedeelte represents the road reserve of a portion van Nasionale Roete N4 Seksie 13 of National Route Section</p>	<p>Vel Sheet 2 van 17 Plan P576/06</p>
--	--	--	--



Die Suid Afrikaanse Nasionale Padogenskap Beperk
 The South African National Roads Agency Limited

Die figuur getoon
 The figure shown

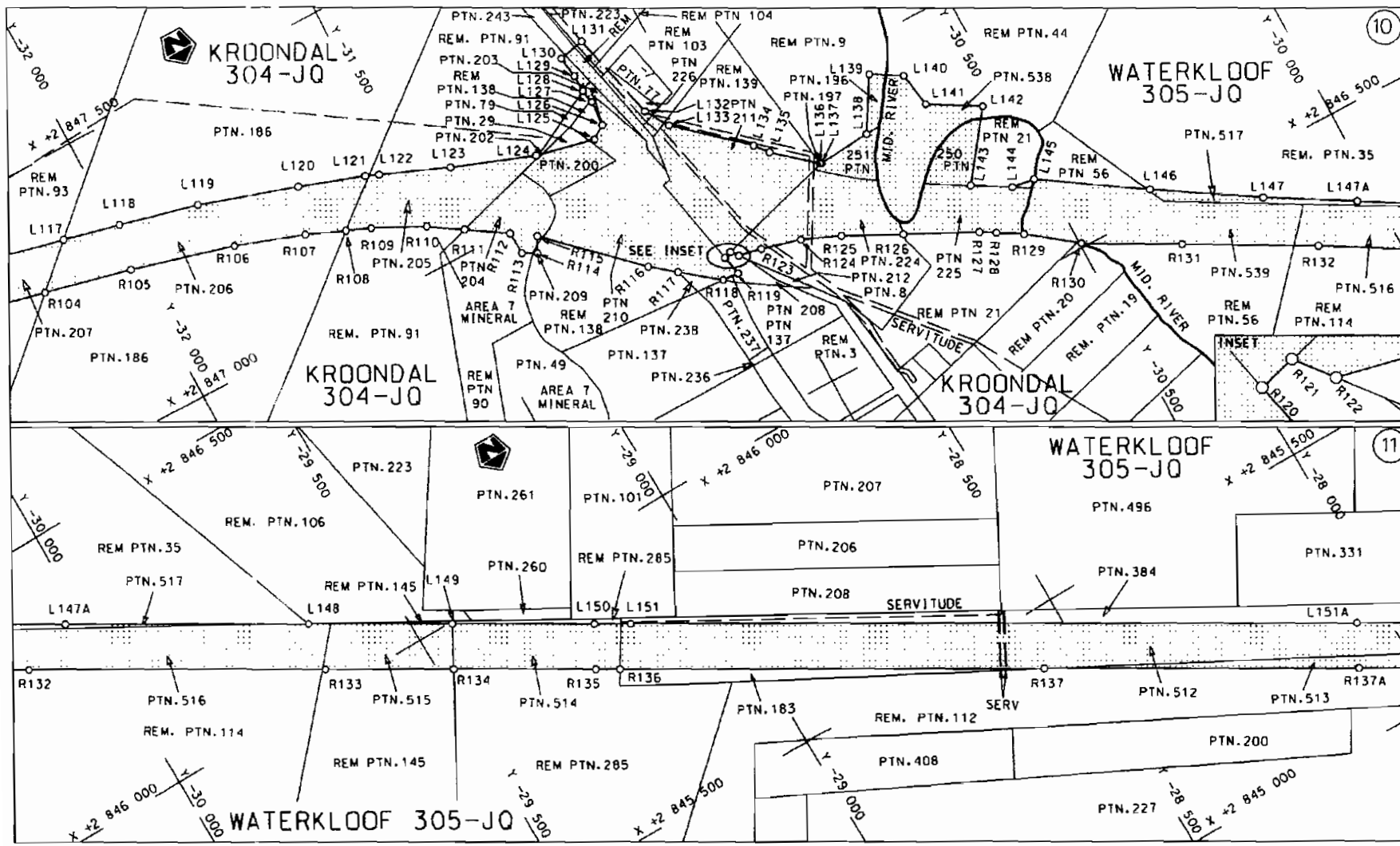


steldie padreserwe voor van 'n gedeelte
 represents the road reserve of a portion
 van Nasionale Roete N4 Seksie
 of National Route N4 Section

13

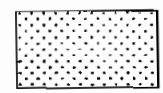
Vel Sheet 3 van 17
 Plan P576/06

D.O.9.A



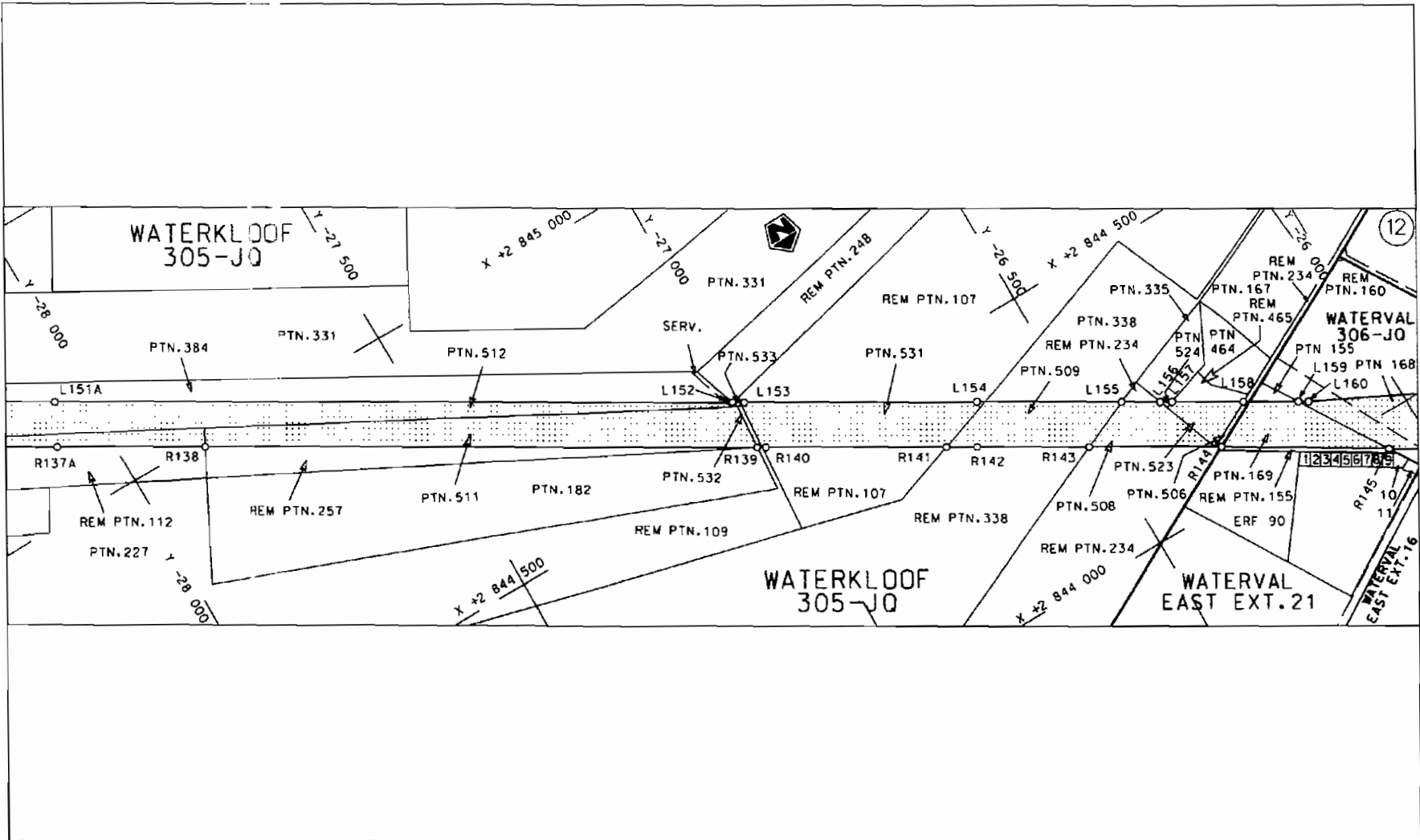
Die Suid Afrikaanse Nasionale Padagentskap Beperk
The South African National Roads Agency Limited

Die figuur getoon
The figure shown



steldie padreserwe voor van 'n gedeelte
represents the road reserve of a portion
van Nasionale Roete N4 Seksie
of National Route Section 13

Vet Sheet 4 van 17
Plan P576/06



Die Suid Afrikaanse Nasionale Padagentskap Beperk
The South African National Roads Agency Limited

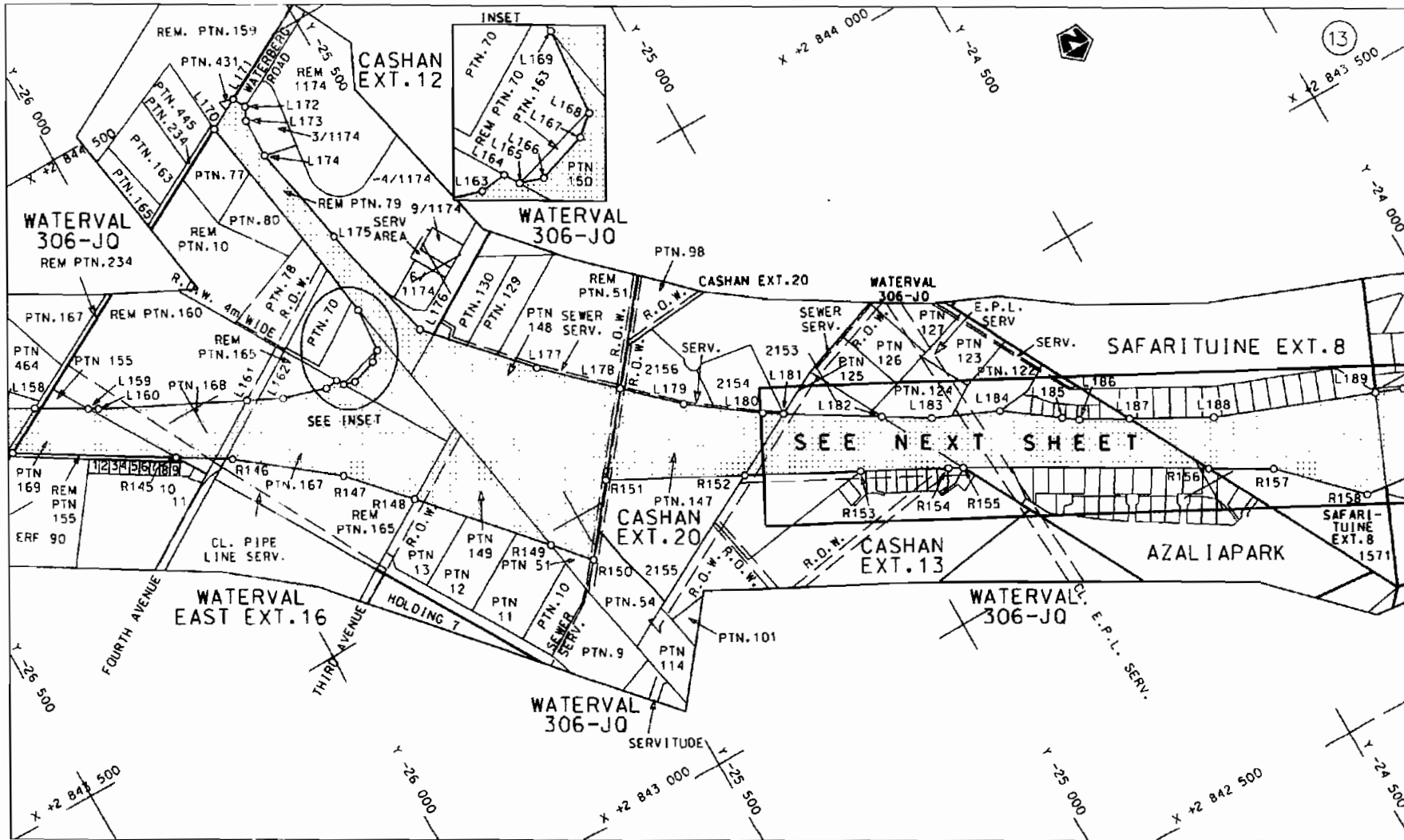
Die figuur getoon
The figure shown




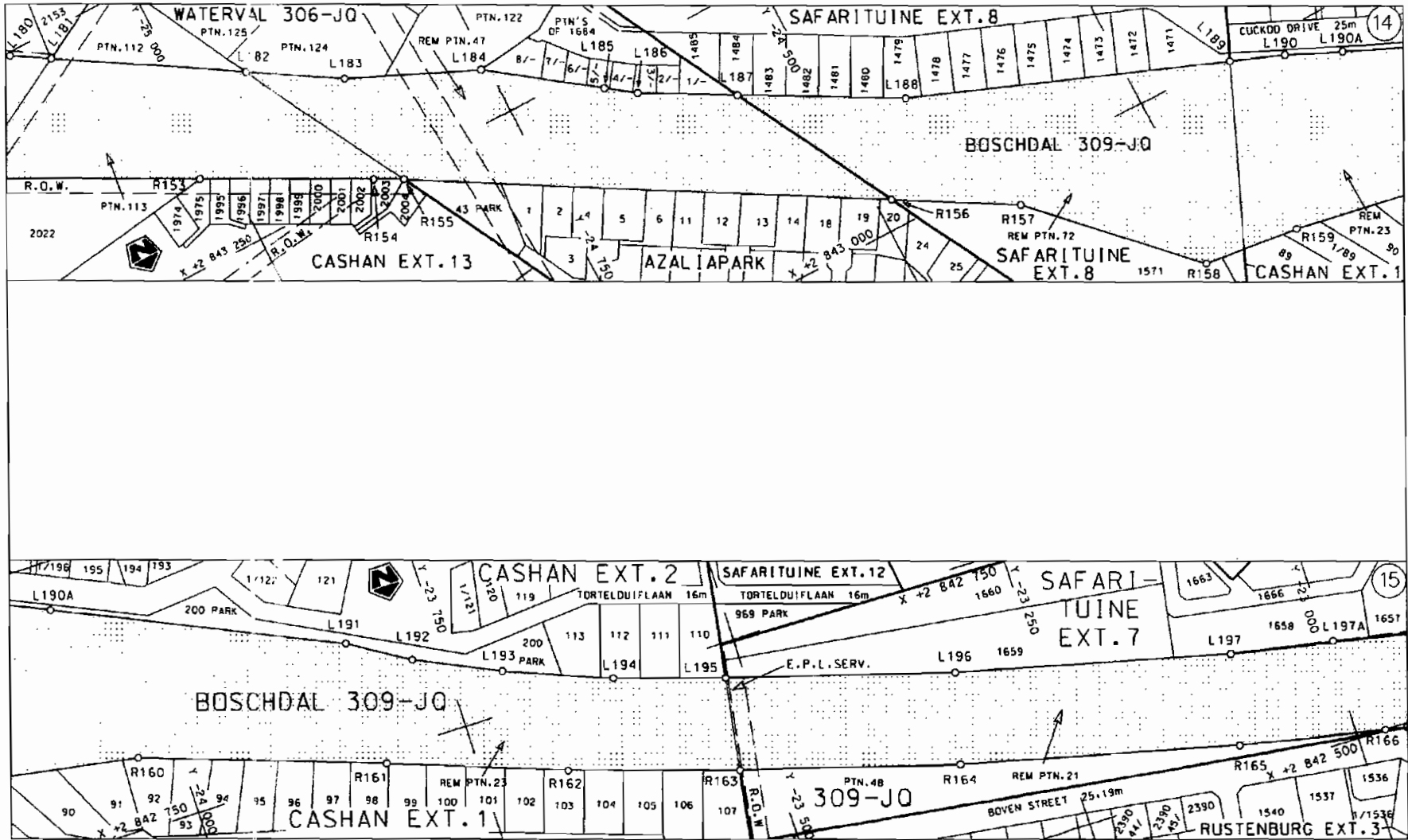
steldie padreserwe voor van 'n gedeelte
represents the road reserve of a portion
van Nasionale Roete N4 Seksie
of National Route Section 13

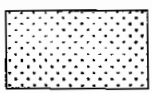
Vel 5 van 17
Sheet of
Plan P576/06

D.O.9.A

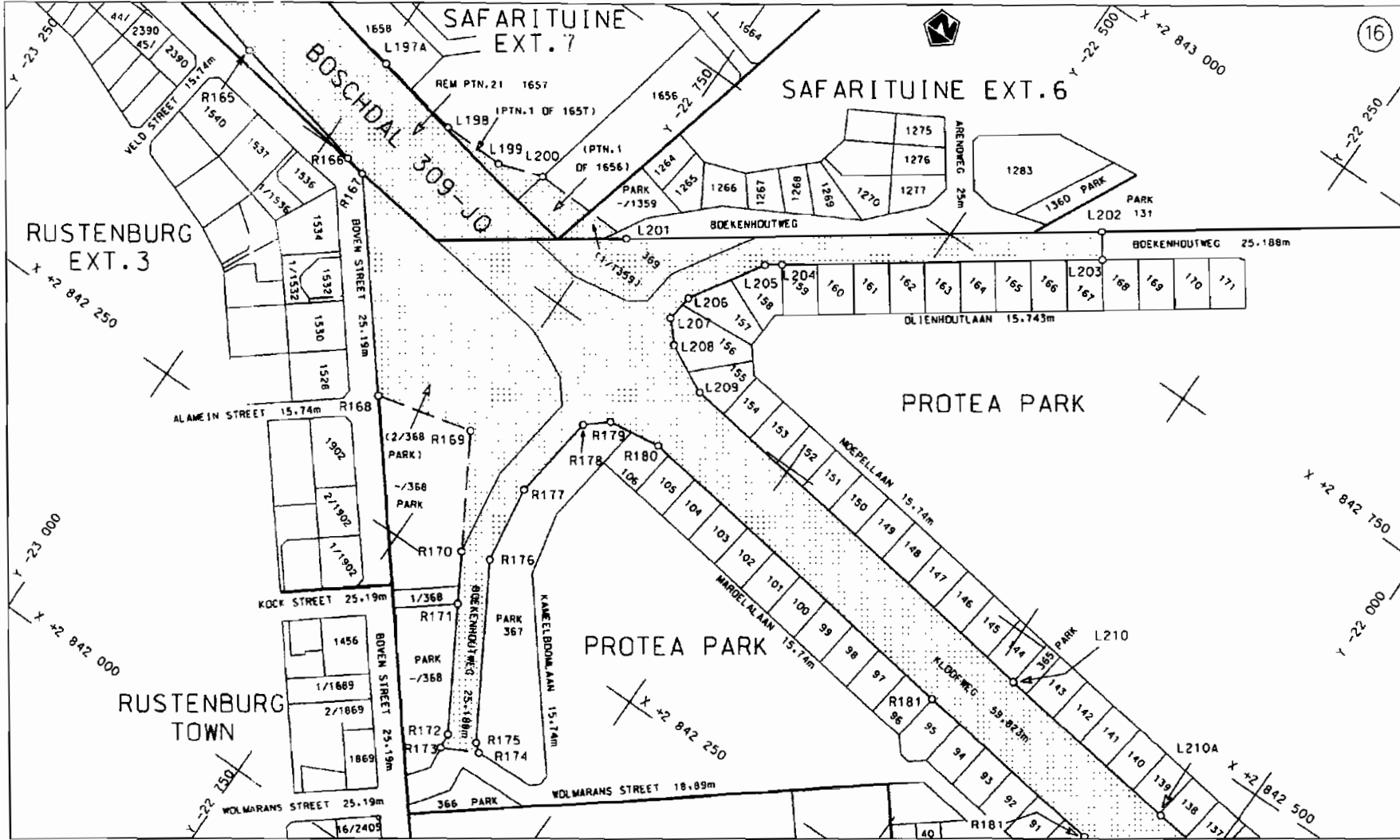



<p>Die Suid Afrikaanse Nasionale Padagentskap Beperk The South African National Roads Agency Limited</p>	<p>Die figuur getoon The figure shown</p>	<p> steldie padreserwe voor van 'n gedeelte represents the road reserve of a portion van Nasionale Roete N4 Seksie 13 of National Route Section</p>	<p>Vel Sheet 6 van of 17 Plan P576/06</p>
--	---	---	---

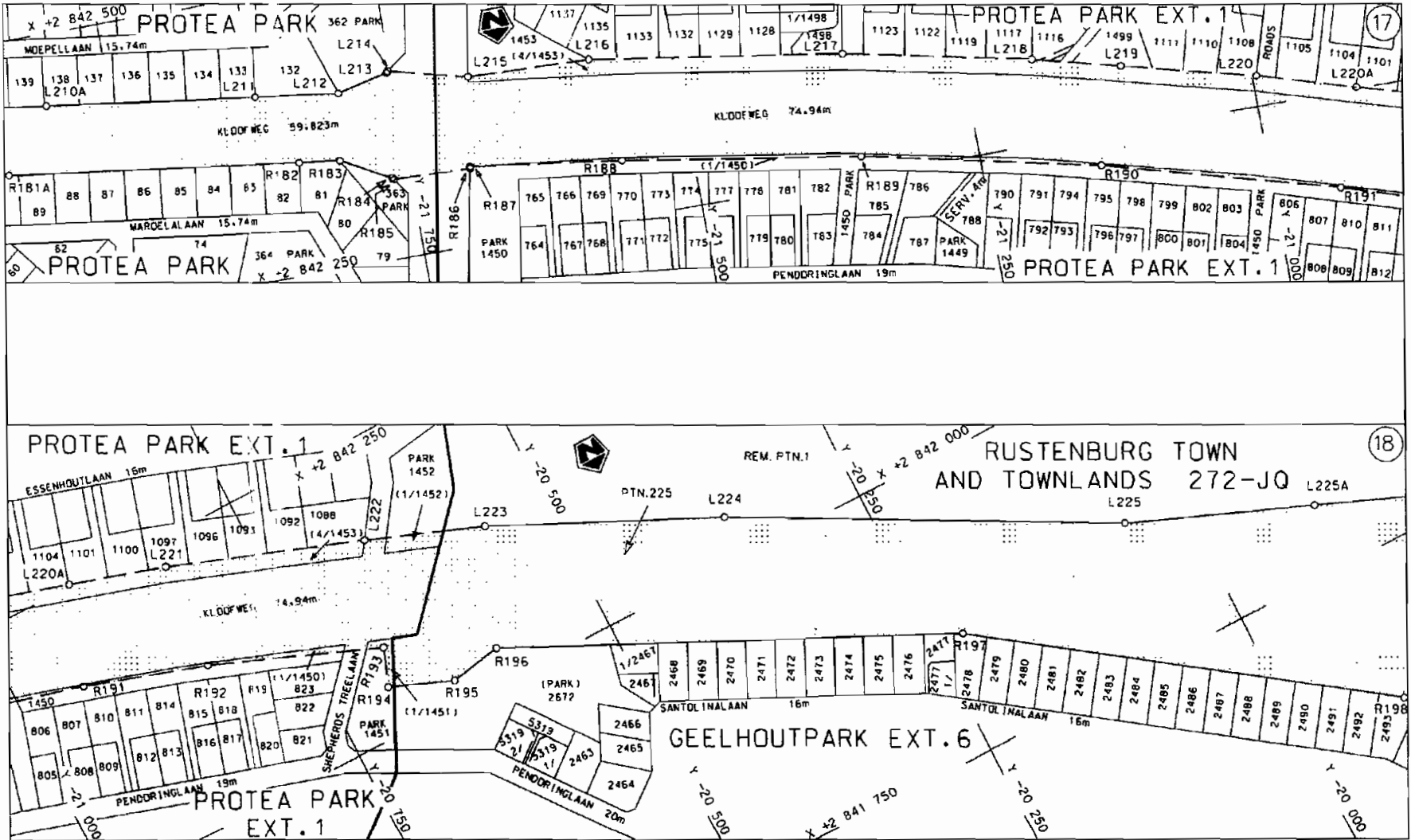


Die Suid Afrikaanse Nasionale Padogentskap Beperk The South African National Roads Agency Limited	Die figuur getoon The figure shown	 steldie padreserwe voor van 'n gedeelte represents the road reserve of a portion van Nasionale Roete N4 Seksie 13 of National Route of Section	Vel Sheet 7 van 17 Plan P576/06
--	---------------------------------------	---	------------------------------------

D.O.9.A



<p>Die Suid Afrikaanse Nasionale Padagentskap Beperk The South African National Roads Agency Limited</p>	<p>Die figuur getoon The figure shown</p> 	<p>steldie padreserwe voor van 'n gedeelte represents the road reserve of a portion van Nasionale Roete of National Route</p> <p>N4</p> <p>Seksie Section</p> <p>13</p>	<p>Vel Sheet</p> <p>8 van of 17</p> <p>Plan</p> <p>P576/06</p>
--	--	---	--



Die Suid Afrikaanse Nasionale Padagentskop Beperk
 The South African National Roads Agency Limited

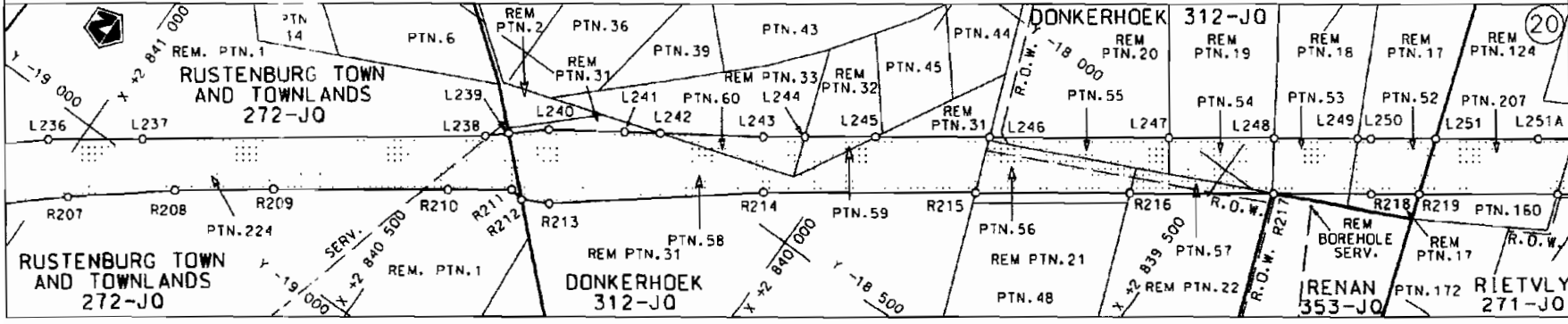
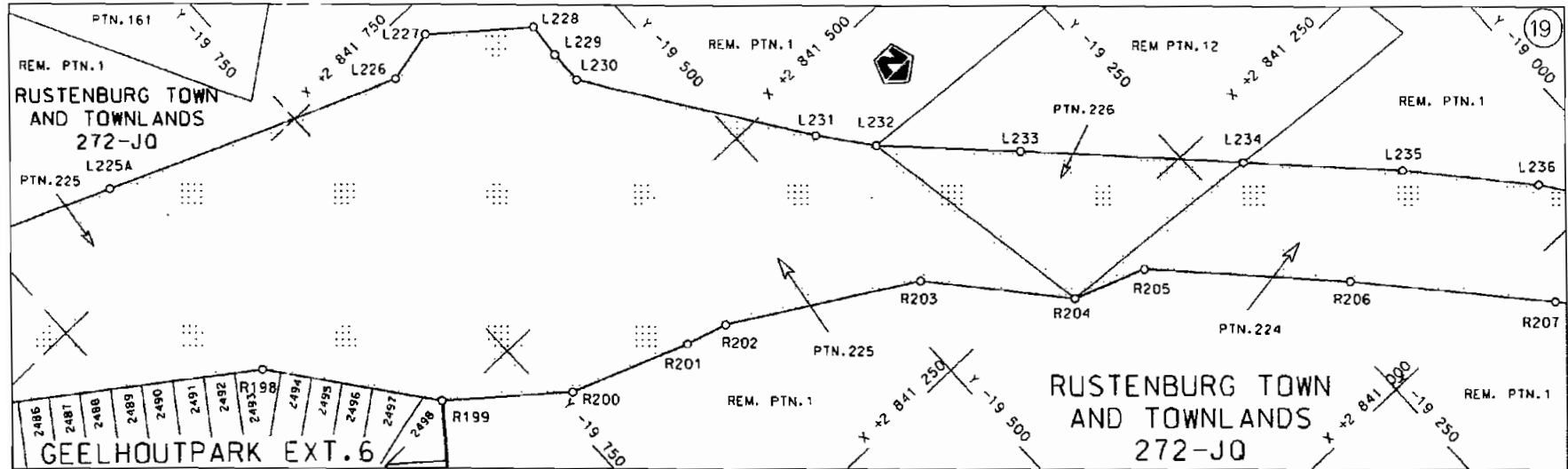
Die figuur getoon
 The figure shown



steldie padreserwe voor van 'n gedeelte
 represents the road reserve of a portion
 van Nasionale Roete N4 Seksie 13
 of National Route Section

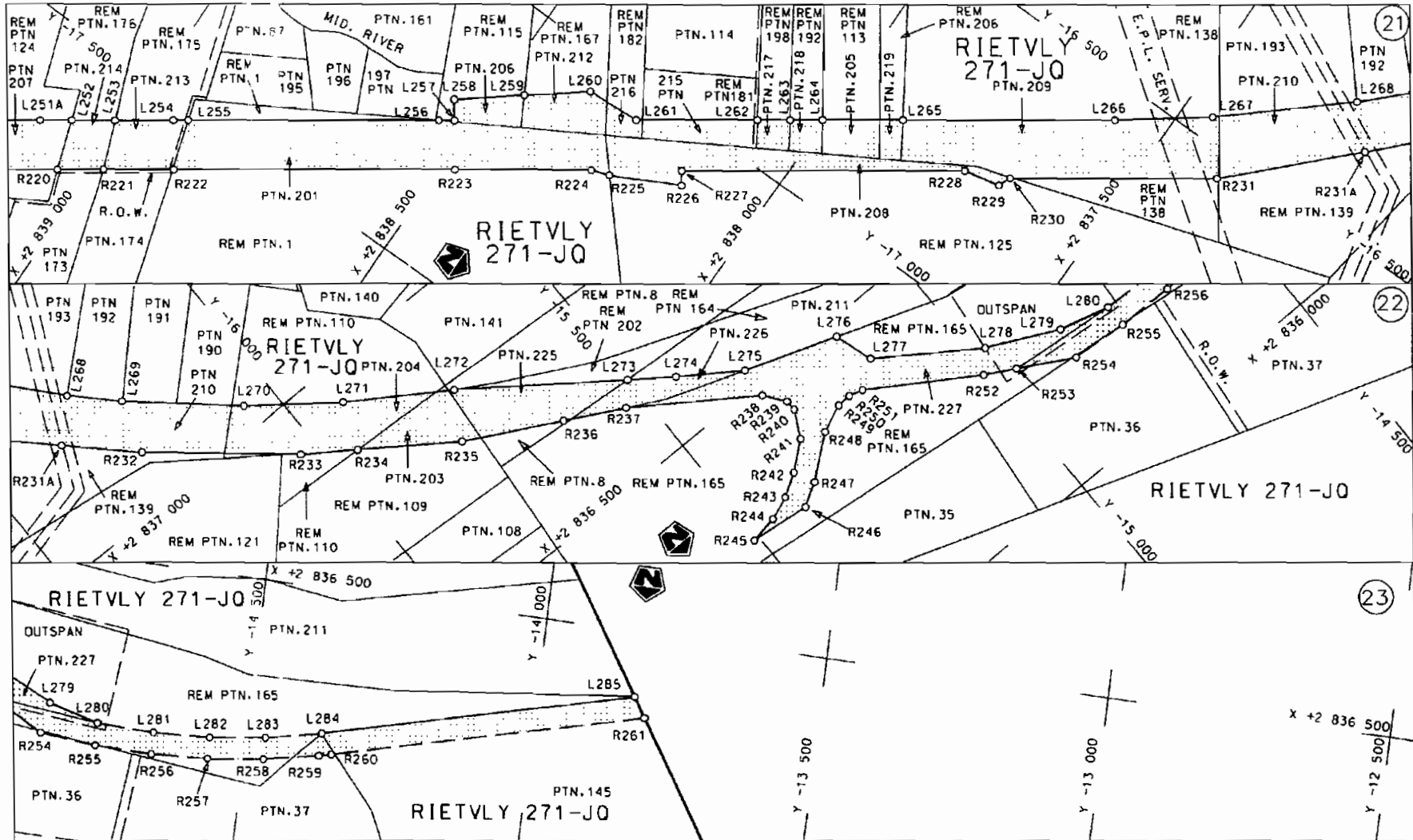
Vel Sheet 9 van 17
 Plan P576/06


D.O.9.A



<p>Die Suid Afrikaanse Nasionale Padagentskap Beperk</p>	<p>Die figuur getoon</p>		<p>steldie padreserwe voor van 'n gedeelte represents the road reserve of a portion van Nasionale Roete N4 Seksie of National Route Section</p>	<p>Vel Sheet 10 of 17</p>
<p>The South African National Roads Agency Limited</p>	<p>The figure shown</p>		<p>13</p>	<p>Plan P576/06</p>

D.O.9.A



<p>Die Suid Afrikaanse Nasionale Padagentskap Beperk The South African National Roads Agency Limited</p>	<p>Die figuur getoon The figure shown</p> 	<p>steldie padreserwe voor van 'n gedeelte represents the road reserve of a portion van Nasionale Roete of National Route</p> <p>N4 Seksie Section 13</p>	<p>Vel Sheet 11 van of 17 Plan P576/06</p>
--	--	---	--

D.O.G.A

PADRESERWE KOORDINATE / ROAD RESERVE CO-ORDINATES						
L1NKERKANT/LEFT HAND SIDE			REGTERKANTIRIGHT HAND SIDE			
	Y	X	WG27°	Y	X	
L1	- 51 447.880	2848915.460		R1	- 51 441.780	2848829.990
L2	- 51 436.260	2848916.170		R2	- 51 379.150	2848836.970
L3	- 51 343.050	2848923.490		R3	- 51 130.520	2 848 880.980
L4	- 51 151.720	2 848 961.060		R4	- 50 935.750	2848945.610
L5	- 50 966.890	2 849 022.350		R5	- 50 758.670	2 849 030.250
L6	- 50 798.120	2 849 102.080		R6	- 50 629.520	2 849 103.220
L7	- 50 645.510	2849185.840		R7	- 50 533.210	2 849 156.200
L8	- 50 600.200	2849210.710		R8	- 50 395.860	2 849 231.590
L9	- 50 434.320	2 849 301.750		R9	- 50 238.200	2 849 303.090
L10	- 50396.680	2849322.710		R10	- 50 150.460	2849327.800
L11	- 50 343.720	2849352.220		R11	- 50 061.460	2 849 352.870
L12	- 50 216.610	2 849 396.850		R12	-49861.810	2 849 371.210
L13	- 50155.570	2849418.280		R13	- 49721.000	2849374.210
L14	- 50 071.200	2 849 433.450		R14	- 49 506.750	2849341.090
L15	- 49 958.290	2849453.760		R15	- 49412.840	2849 326.580
L16	- 49863.600	2849454.120		R16	- 49357.030	2849297.750
L17	- 49 781.690	2 849 461.250		R17	- 49342.130	2849 284.340
L18	- 49720.520	2 849 466.570		R18	- 49335.010	2 849 222.200
L19	- 49573.870	2 849 480.820		R19	-49303.640	2849226.720
L20	- 49546.010	2 849 484.190		R20	-49273.450	2 849 282.250
L21	- 49 471.290	2 849 498.080		R21	- 49251.650	2849 302.230
L22	- 49378.570	2849518.420		R22	-49196.730	2849 333.040
L23	- 49311.340	2 849 553.630		R23	-49050.500	2849 371.080
L24	- 49 293.270	2849564.140		R24	-48828.890	2849 393.260
L25	- 49 262.660	2849626.780		R25	-48784.600	2849394.200
L26	- 49 232.710	2 849 624.510		R26	-48745.720	2849 387.310
L27	- 49 224.950	2849565.160		R27	-48642.530	2 849 397.230
L28	- 49153.900	2849525.310		R28	- 48361.440	2849 403.240
L29	- 49061.820	2 849 507.640		R29	- 46964.050	2849 328.620
L30	- 48813.090	2 849485.990		R30	- 46876.620	2849324.340
L31	- 48747.830	2 849 487.280		R31	- 46 297.040	2849293.260
L32	- 48 650.690	2849483.160		R32	- 45800.640	2849266.640
L33	- 48589.700	2 849 480.570		R33	- 45 413.050	2849 245.850
L34	- 48 446.740	2 849 482.850		R34	- 45 273.440	2849238.360
L35	- 48358.080	2 849484.870		R35	- 44960.480	2849201.730
L36	- 48143.420	2849473.280		R36	- 44808.610	2849181.640
L37	- 47845.360	2 849 457.420		R37	- 44 680.990	2849 164.750
L38	-47705.190	2 849 456.960		R38	-44571.740	2 849 150.300
L39	- 47570.500	2849446.760		R39	- 44 449.840	2849134.170
L40	-47561.140	2 849 459.840		R40	- 44264.830	2849 109.700
L41	- 47507.240	2849449.450		R41	- 43987.050	2 849 072.950
L42	-47463.700	2849439.090		R42	-43725.870	2 849 038.390
L43	- 47 440.800	2849437.880		R43	- 43163.550	2 848 964.000
L44	- 47 256.190	2849429.760		R44	-42948.110	2 848 935.500
L45	- 47 220.760	2849427.370		R45	-42907.250	2848930.100
L46	- 46946.740	2 849 409.690		R46	-42852.600	2 848 922.870
L47	- 45 466.520	2 849 330.900		R47	- 42795.350	2848 915.300
L48	- 45327.780	2 849 323.920		R48	- 42 640.270	2848894.790
L49	- 45087.290	2849300.470		R49	- 42 485.00	2848874.260
L50	- 44985.960	2849285.770		R50	- 42 347.810	2848856.120
L51	- 44 737.220	2849253.310		R51	- 42 248.240	2848 842.950

Vel	12	Van	17	P576/06
Sheet		of		

PADRESERWE K06RDINATE / ROAD RESERVE CO-ORDINATES						
L1NKERKANT/LEFT HAND SIDE				REGTERKANT/RIGHT HAND SIDE		
	Y	X	WG27		Y	X
L52	- 44 569.700	2849231.440	R52	- 42167.550	2 848 832.280	
L53	- 44 503.570	2849222.810	R53	- 42 086.880	2848821.610	
L54	- 44 416380	2849211.430	R54	- 41 714.870	2848772.410	
L55	-44119.130	2849171.910	R55	- 41 555.950	2 848 751.400	
L56	- 43992.570	2 849 155.080	R56	- 41 450.850	2 848739.170	
L57	- 43747.950	2849122.550	R57	- 41 346.850	2848727.060	
L58	-43199.800	2 849 049.660	R58	- 41 290.320	2848726.000	
L59	- 42940.930	2849015.240	R59	- 41 143.900	2 848 723.260	
L60	- 42 681.520	2 848 980.930	R60	- 40951.530	2 848 730.180	
L61	- 42530.030	2 848 960.900	R61	- 40 760.220	2848751.280	
L62	- 42397.190	2848943.330	R62	- 39 289.590	2 848 945.650	
L63	- 42 296.00	2 848 929.950	R63	- 38 863.020	2849002.030	
L64	- 42 214.640	2848919.190	R64	- 38725.730	2849021.910	
L65	- 42133.340	2 848 908.440	R65	- 38 596.430	2849049.600	
L66	- 41 759.340	2 848 858.980	R66	- 38 465.560	2849087.260	
L67	- 41 636.500	2848842.730	R67	- 38 280.730	2 849 142.850	
L68	- 41 545.540	2848830.700	R68	- 38 058.160	2 849203.240	
L69	- 41439.890	2848818.650	R69	- 37 944.050	2 849228.040	
L70	- 41 262.630	2848807.120	R70	- 37 835.170	2 849 250.520	
L71	- 41 085.220	2 848 806.020	R71	- 37 610.320	2849287.590	
L72	- 40907.730	2848815.210	R72	- 37468.930	2849297.470	
L73	- 39 311.230	2849027.020	R73	- 37407.560	2849301.760	
L74	- 38 711.570	2 849 106.580	R74	- 37 353.120	2 849 305.570	
L75	- 38 488.640	2849 163.890	R75	- 37135.160	2849287.600	
L76	- 38 303.370	2849219.280	R76	- 36 915.390	2 849 233.930	
L77	- 38 116.340	2849272.700	R77	- 36 896.630	2849214.680	
L78	- 37 947.910	2849311.250	R78	- 36 866.630	2849216.040	
L79	- 37 890.230	2 849 324.220	R79	- 36 852.260	2 849 232.280	
L80	- 37 661.640	2 849 363.920	R80	- 36 645.120	2 849 268.390	
L81	- 37 483.940	2 849 388.170	R81	- 36 417.310	2 849 271.330	
L82	- 37 431.320	2 849 395.350	R82	- 36189.570	2 849255.440	
L83	- 37 175.770	2849448.480	R83	- 35 966.430	2849208.470	
L84	- 37144.850	2 849455.860	R84	- 35 746.160	2849 149.990	
L85	- 36 930.710	2849507.000	R85	- 35 529.100	2 849 080.380	
L86	- 36 915.570	2 849 523.990	R86	- 35 315.630	2848999.700	
L87	- 36 875.650	2849525.980	R87	- 35 106.960	2848908.350	
L88	- 36 863.570	2 849 508.670	R88	- 34 903.110	2 848 806.380	
L89	- 36 729.980	2849459.770	R89	- 34 704.730	2848694.160	
L90	- 36 652.310	2849431.330	R90	- 34 512.280	2848571.770	
L91	- 36 443.070	2 849 384.380	R91	- 34 350.340	2848457.760	
L92	- 36 315.780	2849 360.760	R92	- 34 233.790	2848368.700	
L93	- 36 284.080	2 849 354.890	R93	- 34020.390	2848199.980	
L94	- 36 055.800	2849312.420	R94	- 33 944.590	2848134.770	
L95	- 35830.060	2849258.290	R95	- 33 863.530	2848076.000	
L96	- 35609.240	2 849 193.440	R96	- 33 709.360	2 847 954.030	
L97	- 35 388.330	2 849 116.090	R97	- 33 569.600	2847847.400	
L98	- 35 323.680	2 849 089.650	R98	- 33408.310	2847741.900	
L99	- 35173.540	2 849 028.250	R99	- 33 249.950	2 847 651.620	
L100	- 35 006.770	2 848 949.920	R100	- 33 077.070	2 847 566.870	
L101	- 34 963.520	2 848 929.600	R101	- 32898.960	2847493.110	
L102	- 34 758.680	2 648 820.280	R102	- 32 716.870	2 847 430.540	

Vel	13	Van	17	P576/06
Sheet		of		

PADRESERWE KOORDINATE / ROAD RESERVE CO-ORDINATES					
L1NKERKANT/LEFT HAND SIDE			REGTERKANT/RIGHT HAND SIDE		
	Y	X	WG27	Y	X
L103	·34559.750	2 848 700.480	R103	- 32 535.140	2847382.980
L104	·34367.230	2 848 570.830	R104	- 32 161.980	2 847 293.280
L105	- 34 270.030	2 848496.480	R105	- 32007.600	2847256.170
L106	·34184.370	2848430.950	R106	- 31 824.990	2847206170
L107	- 33 931.260	2 848 231.110	R107	- 31 703.840	2847163.660
L108	- 33 659.950	2848016.880	R108	- 31635.590	2847134.980
L109	·33578.960	2847954.780	R109	- 31 594.790	2847 117.820
L110	- 33 432.780	2 847 853.880	R110	- 31 506.530	2847073.980
L111	- 33 280.820	2847761.760	R111	- 31449.710	2 847 038.070
L112	·33123.630	2847679.170	R112	- 31 381.350	2 846 994.830
L113	·32961.870	2 847 606.030	R113	·31 379.040	2 846 954.600
L114	- 32 795.950	2 847 542.600	R114	- 31 354.260	2846941.630
L115	- 32 626.680	2847489.590	R115	- 31 340.310	2846968.140
L116	- 32 516.390	2847460.790	R116	- 31 193.010	2 846 830.030
L117	- 32 089.110	2847358.080	R117	- 31 150.600	2846797.360
L118	- 31 988.850	2847333.980	R118	·31 086.250	2846747.620
L119	- 31 849.160	2847298.910	R119	·31 057.630	2 846745.480
L120	- 31 675.730	2 847 242.500	R120	·31 065.530	2 846 780.430
L121	- 31 560.740	2 847 202.250	R121	·31 051.900	2846784.340
L122	- 31 537.850	2847 192.910	R122	- 31 041.470	2 846 771.560
L123	- 31 419.750	2847 144.530	R123	·31 000.700	2 846 763.200
L124	- 31 275.210	2 847 092.150	R124	·30931.020	2846744.370
L125	- 31 170.750	2847069.180	R125	·30864.310	2 846 716.500
L126	·31146.180	2 847 084.990	R126	- 30 766.740	2846667.920
L127	- 31 143.120	2847130.130	R127	- 30 647.480	2 846 609.010
L128	- 31 147.410	2847154.860	R128	- 30621.600	2 846 593.870
L129	- 31 147.950	2 847 185.010	R129	- 30 579.315	2 846 569.133
L130	·31 153.330	2847223.720	R130	·30497.060	2846507.536
L131	·31 106.808	2847233.905	R131	- 30 340.510	2 846 422.440
L132	·31068.415	2847071.406	R132	- 30129.690	2846307.630
L133	- 31 042.890	2 847 029.310	R133	- 29 671.620	2 846 041.200
L134	·30926.550	2846927.700	R134	- 29 474.340	2 845 926.470
L135	·30907.390	2846903.770	R135	- 29 256.520	2845799.770
L136	- 30 838.080	2 846 844.830	R136	- 29 219.800	2 845 778.390
L137	·30835.474	2 846 843.695	R137	- 28570.660	2 845400.900
L138	·30740.700	2846851.410	R138	- 27 862.050	2 844 988.820
L139	- 30685.400	2846943.310	R139	- 27 022.930	2 844 500.860
L140	- 30633.590	2 846 913.220	R140	·27009.690	2 844493.310
L141	·30624.120	2 846 849.890	R141	- 26 735.710	2844333.990
L142	- 30 537.680	2 846 799.620	R142	- 26 689.130	2 844 306.900
L143	·30622.470	2 846 686.800	R143	·26519.680	2 844 208.360
L144	- 30 559.030	2846649.910	R144	- 26 319.700	2844092.060
L145	- 30 518,097	2846 644.278	R145	- 26 069.670	2843941.106
L146	- 30 345.730	2846532.810	R146	·25983.760	2843888.780
L147	- 30 175.930	2846427.040	R147	·25824.440	2843764830
L148	·29657.100	2846125.270	R148	·25736.100	2 843 666.820
L149	- 29 435.390	2 845 996.320	R149	- 25 566.970	2 843479.440
L150	- 29 217.770	2845869.760	R150	- 25513.040	2843419.640
L151	- 29162.270	2845837.700	R151	·25424.260	2843530.570
L152	- 27 020.120	2 844 591.950	R152	- 25 206.810	2 843 417.540
L153	- 27 002.250	2 844 581.360	R153	·25023.783	2843322.380

Vel 14 Van 17
Sheet of

P576/06

PADRESERWE KOORDINATE / ROAD RESERVE CO-ORDINATES							
L1NKERKANT/LEFT HAND SIDE			REGTERKANT/RIGHT HAND SIDE				
	y	X	WG27	y	X		
L154	- 26 648.920	2 844 376.060	R154	- 24 886.210	2 843250.900		
L155	- 26 429.880	2 844 248.680	R155	- 24 862.580	2 843238.770		
L156	- 26 371.380	2 844 214.670	R156	- 24 485.940	2843024.790		
L157	- 26 353.650	2 844 204.350	R157	- 24 386.850	2 842 968.410		
L158	- 26 245.630	2 844 141.540	R158	- 24 265.060	2842846.930		
L159	- 26 163.028	2 844 093.503	R159	- 24179.600	2842837.740		
L160	- 26 147.470	2 844 084.570	R160	- 24 035.880	2842812.500		
L161	- 25909.315	2843966.414	R161	- 23826.300	2 842740.400		
L162	- 25 851.150	2 843 937.670	R162	- 23 674.930	2842686.380		
L163	- 25 774.940	2843914.930	R163	- 23530.050	2 842 640.450		
L164	- 25751.486	2843918.104	R164	- 23 341.830	2842585.590		
L165	- 25743.580	2 843 905.300	R165	- 23101.440	2 842 526.400		
L166	- 25 723.210	2 843 899.170	R166	- 22974.750	2842499.670		
L167	- 25 678.500	2 843 913.970	R167	- 22956.270	2 842 495.790		
L168	- 25 661.580	2843927.980	R168	- 22833.710	2 842 342.900		
L169	- 25 655.390	2 844 004.970	R169	- 22 749.740	2 842 363.920		
L170	- 25 722.810	2844406.140	RHO	- 22 695.630	2 842271.750		
L171	- 25 666.600	2844435.730	R171	- 22 672.590	2 842 232.330		
L172	- 25 654.960	2844413.610	R172	- 22 615.030	2 842 133.840		
L173	- 25 665.750	2844 390.970	R173	- 22 613.490	2 842 120.370		
L174	- 25 667.390	2 844 322.300	R174	- 22 583.600	2842 135.960		
L175	- 25 630.640	2844137.470	R175	- 22 590.610	2842141.970		
L176	- 25 578.200	2 843 922.350	R176	- 22671.450	2 842 280.280		
L177	- 25 432.020	2843763.330	R177	- 22 681.680	2842 348.320		
L178	- 25 321.250	2 843 659.280	R178	- 22 671.410	2842425.950		
L179	- 25 237.490	2 843 580.640	R179	- 22652.930	2 842 442.220		
L180	- 25 123.950	2843497.330	R180	- 22 606.410	2842449.110		
L181	- 25 091.910	2843477.980	R181	- 22282.110	2842406.210		
L182	- 24 942.740	2843387.710	R182	- 21 844.300	2 842 348.290		
L183	- 24 867.200	2 843 342.220	R183	- 21 808.920	2842343.610		
L184	- 24 756.430	2843293.980	R184	- 21766.180	2 842 320.550		
L185	- 24 666.390	2843229.760	R185	- 21 765.074	2 842 318.989		
L186	- 24 642.100	2843212.570	R186	- 21 696.849	2842316.970		
L187	- 24 564.390	2 843 170.540	R187	- 21 696.550	2842318.450		
L188	- 24432.650	2 843 099.290	R188	- 21 562.660	2 842 300.840		
L189	- 24162.930	2842997.180	R189	- 21 353.080	2842267.280		
L190	- 24117.240	2842979.630	R190	- 21 145.640	2 842 222.350		
L191	- 23 828.280	2 842 850.460	R191	- 20940.970	2 842 166.200		
L192	- 23 776.870	2842 819.380	R192	- 20834.450	2842132.150		
L193	- 23 703.880	2842785.900	R193	- 20 687.140	2842074.060		
L194	- 23 611.940	2 842 750.330	R194	- 20 699.620	2842041.360		
L195	- 23 517.150	2 842 720.280	R195	- 20 644.810	2 842 020.000		
L196	- 23 321.130	2 842 662.880	R196	- 20 599.010	2 842 028.460		
L197	- 23 084.080	2842604.510	R197	- 20 225.020	2841851.000		
L198	- 22 917.849	2 842 573.040	R198	- 19904.137	2 841 622.678		
L199	- 22863.350	2 842 572.000	R199	- 19814.290	2841 506.730		
L200	- 22 824.644	2 842 585.270	R200	- 19 733.270	2841441.580		
L201	- 22732.611	2 842 582.309	R201	- 19640.290	2841407.450		
L202	- 22 391.780	2 842 829.190	R202	- 19607.710	2841 397.760		
L203	- 22 377.010	2842808.810	R203	- 19469.640	2841 317.470		
L204	- 22 606.490	2842642.570	R204	- 19389.170	2841 224.790		
			Vel	15	Van	17	P576/06
			Sheet		of		

PADRESERWE KOORDINATE / ROAD RESERVE CO-ORDINATES					
L1NKERKANT/LEFT HAND SIDE			REGTERKANT/RIGHT HAND SIDE		
	Y	X	WG27	Y	X
L205	- 22 618.750	2842633.680	R205	-19332.280	2841 203.970
L206	- 22 657.840	2842570.980	R206	-19218.720	2841 086570
L207	- 22 660.930	2842547.570	R207	-19110.150	2 840 964.500
L208	- 22 645.260	2 842 529.930	R208	-19002.300	2 840 832.590
L209	- 22 603.080	2842509.010	R209	- 18 908.910	2 840 707.250
L210	- 22 231.630	2 842 459.870	R210	- 18746.000	2 840480.080
L211	- 21 872.670	2842412.380	R211	- 18686.590	2 840 398.420
L212	- 21 799.320	2 842 402.680	R212	-18690.800	2840376.730
L213	- 21 754.220	2842413.440	R213	-18669.930	2840337.760
L214	- 21 752.673	2842414.600	R214	- 18455.550	2 840 073.220
L215	- 21 683.640	2842397.670	R215	-18259.900	2 839 800.260
L216	- 21 575.310	2 842 394.550	R216	-18118.270	2 839 602.660
L217	- 21 352.710	2842360.310	R217	- 17 985.790	2839417.840
L218	- 21 188.660	2 842 326.530	R218	-17896.270	2839292.940
L219	- 21 112.680	2842307.210	R219	- 17 851990	2839231.130
L220	- 20 996.380	28422n.640	R220	- 17724710	2839053.510
L221	- 20 827.580	2 842 226.260	R221	- 17676.890	2 838 986.760
L222	- 20 658.373	2842 165.641	R222	- 17605.030	2 838 886.470
L223	-20558.010	2 842 128.280	R223	- 17 313.750	2838480070
L224	- 20 365.060	2 842 038.500	R224	- 17 173.920	2 838 284.980
L225	- 20 052.650	2841871.740	R225	- 17 162.300	2 838 253.940
L226	- 19667.240	2841717.110	R226	- 17 102.770	2 838 139.260
L227	- 19626.460	2 841 726.460	R227	- 17 081.540	2 838 154.360
L228	- 19559.420	2841672.620	R228	- 16 790.250	2837747.980
L229	- 19 561.640	2841645.520	R229	- 16 776.410	2 837 684.050
L230	- 19 562.140	2841619.710	R230	-16754.210	2 837 675.350
L231	-19451.420	2841 458.780	R231	-16542.540	2837379.410
L232	-19421.440	2 841 420.260	R232	-16250.110	2 837 095.300
L233	-19340.320	2 841 339.670	R233	- 16 031.990	2836912.710
L234	-19215.941	2841213.169	R234	- 15 949.340	2 836 855.640
L235	- 19 127400	2841 123.120	R235	- 15 797.750	2836750.990
L236	-19055.840	2841041.540	R236	- 15635.360	2 836 666.870
L237	- 18 967.560	2 840 920.240	R237	-15535.210	2836614.710
L238	- 18642.840	2 840 480.280	R238	-15334.160	2836478.720
L239	- 18618.680	2 840 452.830	R239	- 15 307.390	2836442.480
L240	- 18 576.440	2 840404.820	R240	- 15 306.540	2 836 423.800
L241	-18508.970	2 840 305.590	R241	-15330.740	2836377.210
L242	- 18 477.490	2 840 259.060	R242	-15378.580	2 836 338.180
L243	- 18 385.650	2840 123.330	R243	- 15418.120	2836314.340
L244	- 18 347.070	2 840 069.500	R244	-15459.520	2 836 298.690
L245	- 18282.090	2 839 978.840	R245	- 15 508.900	2 836 290.250
L246	- 18 177.050	2 839 832.350	R246	- 15401.750	2 836 278.670
L247	- 18 012.080	2839602.130	R247	- 15 360.650	2836302.320
L248	-17915.290	2 839 467.110	R248	- 15289.410	2836358.960
L249	- 17 838.840	2 839 360.390	R249	- 15241.100	2 836 379.500
L250	- 17 826.390	2 839 343.020	R250	- 15 216.010	2 836 380.640
L251	- 17766.930	2 839 260.050	R251	-15191.170	2 836 373.590
L252	- 17639.670	2 839 082.450	R252	- 15009.600	2 836 259.040
L253	-17595.430	2 839 019.310	R253	-14957.470	2 836 230.480
L254	- 17 535.130	2 838 936.560	R254	-14863.624	2836179.065
L255	- 17 519.490	2838914.750	R255	- 14764.030	2836170.244

Vel	16	Van	17	P576/06
Sheet		of		

PADRESERWE KOORDINATE / ROAD RESERVE CO-ORDINATES					
L1NKERKANT/LEFT HAND SIDE				REGTERKANT/RIGHT HAND SIDE	
	Y	X	WG27	Y	X
L256	- 17 259.840	2838552.480	R256	-14664.060	2836 168.593
L257	- 17 243.850	2838530.150	R257	- 14564.229	2836174.120
L258	-17213.780	2 838 551.730	R258	- 14465.052	2 836 186.798
L259	- 17 135.980	2 838 456.350	R259	-14367.041	2 836 206.561
L260	-17061.760	2838 365.340	R260	-14345.089	2836212.003
L261	- 17 055.800	2 838 271.210	R261	- 13807.481	2 836 352.883
L262	- 16 930.450	2 838 096.370			
L263	- 16 896.840	2 838 049.500			
L264	- 16 863.340	2 838 002.770			
L265	- 16780.880	2837887.730			
L266	- 16 563.580	2 837 584.550			
L267	- 16 458.870	2837447.720			
L268	-16288.910	2 837256.540			
L269	- 16219.340	2 837 186.930			
L270	- 16 056.920	2837043.610			
L271	- 15915.480	2836936.720			
L272	- 15750.130	2836829.780			
L273	-15502.090	2 836 650.670			
L274	- 15432.090	2 836 600.230			
L275	- 15 330.470	2 836 531.460			
L276	-15167.610	2 836 473.390			
L277	-15145.160	2 836406.430			
L278	- 14 977.390	2 836 293.060			
L279	-14 853.630	2 836 233.260			
L280	- 14764.930	2 836 209.600			
L281	-14664.994	2 836 206.640			
L282	-14565.145	2836211.746			
L283	- 14466.032	2 836 224.885			
L284	-14367.030	2 836 246.300			
L285	-13829.414	2836387.181			

Vel	17	Van	17	P576/06
Sheet		of		