

**CONTENTS**

<i>No.</i>	<i>Page No.</i>	<i>Gazette No.</i>
<b>GOVERNMENT NOTICE</b>		
<b>Transport, Department of</b>		
<i>Government Notice</i>		
759 South African National Roads Agency Limited and the National Roads Act (7/1998): The South African National Roads Agency Limited: Declaration amendment of National Road N12 Sections 11, 12 and 14: Amendment of Declaration No. 730 of 2005 of National Road N12 Sections 11, 12 and 14 .	3	30208

**INHOUD**

<i>No.</i>	<i>Bladsy No.</i>	<i>Koeran! No.</i>
<b>GOEWERMENTSKENNISGEWING</b>		
<b>Vervoer, Departement van</b>		
<i>Goewermentskennisgewing</i>		
759 Suid-Afrikaanse Nasionale Padagentskap Beperk en die Nasionale Paaie Wet (7/1998): Die Suid-Afrikaanse Nasionale Padagentskap Beperk: Verklaring wysiging van Nasionale Pad N12 Seksies 11, 12 en 14: Wysiging van Verklaring No. 730 van 2005 van Nasionale Pad N12 Seksies 11,12 en 14 .	4	30208

---

**GOVERNMENT NOTICE  
GOEWERMENTSKENNISGEWING**

---

**DEPARTMENT OF TRANSPORT  
DEPARTEMENT VAN VERVOER**

No. 759

**24 August 2007**

**THE SOUTH AFRICAN NATIONAL ROADS  
AGENCY LIMITED**

**DECLARATION AMENDMENT OF NATIONAL ROAD N12 SECTIONS 11, 12  
AND 14**

AMENDMENT OF DECLARATION NO. 730 OF 2005 OF NATIONAL ROAD N12 SECTIONS 11, 12 AND 14.

By virtue of Section 40(1)(b) of The South African National Roads Agency Limited and National Roads Act, 1998 (Act No 7 of 1998) I hereby amend declaration No 730 of 2005 by substituting the section from the Northern Cape/North West Provincial Border where N12 section 11 starts up to the end of portion 151 of the farm Wolmaransstad Town and Townlands 184 - HO. where N12 section 14 ends for the subjoined plans P568/06 sheets 1 to 9 for section 11, P569/06 sheets 1 to 10 for section 12 and P570/06 sheets 1 to 13 for section 14.

**(National Road N12 Sections 11, 12 and 14: Northern Cape/North West Provincial Border to Wolmaransstad.)**

---

No. 759

24 Augustus 2007

## DIE SUID AFRIKAANSE NASIONALE PADAGENTSKAP BEPERK

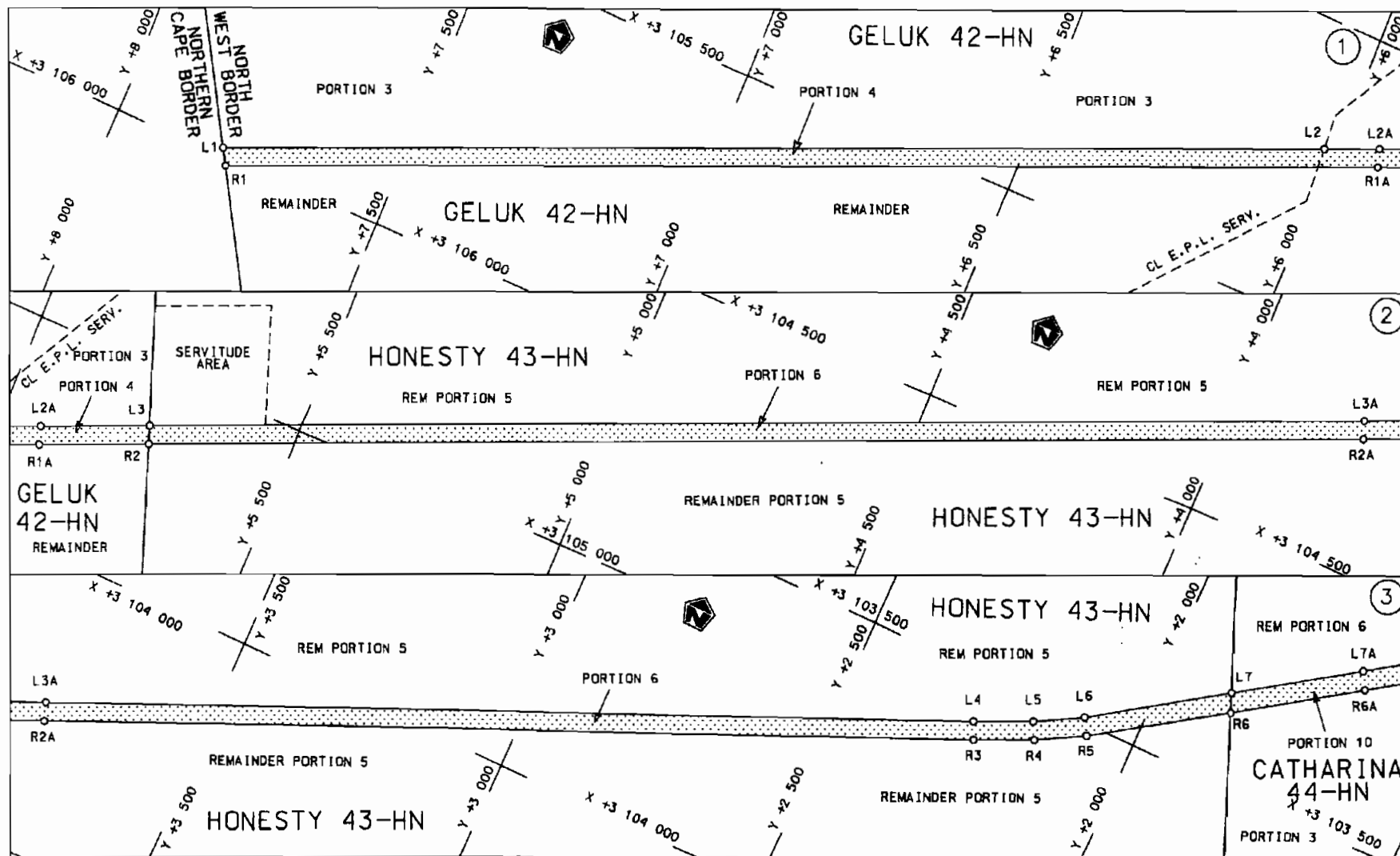
### VERKLARING WYSIGING VAN NASIONALE PAD N12 SEKSIES 11,12 EN 14

WYSIGING VAN VERKLARING NO 730 VAN 2005 VAN NASIONALE PAD N12 SEKSIES 11, 12 EN 14.

Kragtens artikel 40 (1)(b) van die Suid Afrikaanse Nasionale Padagentskap Beperk en Nasionale Paaie Wet (Wet NO.7 van 1998), wysig ek hiermee verklaring No. 730 VAN 2005 deur die gedeelte vanaf die Noord Kaap/Noord Wes Provinsiale grens waar N12 seksie 11 begin tot by die einde van gedeelte 151 van die Plaas Wolmaransstad Town and Townlands 184 - HO, waar N12 seksie 14 eindig, te vervang deur bygaande Plan P568/06 velie 1 tot 9 vir seksie 11, P569/06 velie 1 tot 10 vir seksie 12 en P570/06 velie 1 tot 13 vir seksie 14.

**(Nasionale Pad** N12 Sekstes 11, 12 en 14: Noord kaap/Noord **Wes** Provinsiale Grens tot Wolmaransstad)

  
**MINISTER OF TRANSPORT**



Die Suid Afrikaanse Nasionale Padagentskap Beperk  
The South African National Roads Agency Limited

Die figuur getoon  
The figure shown



stel die padreserwe voor van 'n gedeelte  
represents the road reserve of a portion  
van Nasionale Roete  
of National Route

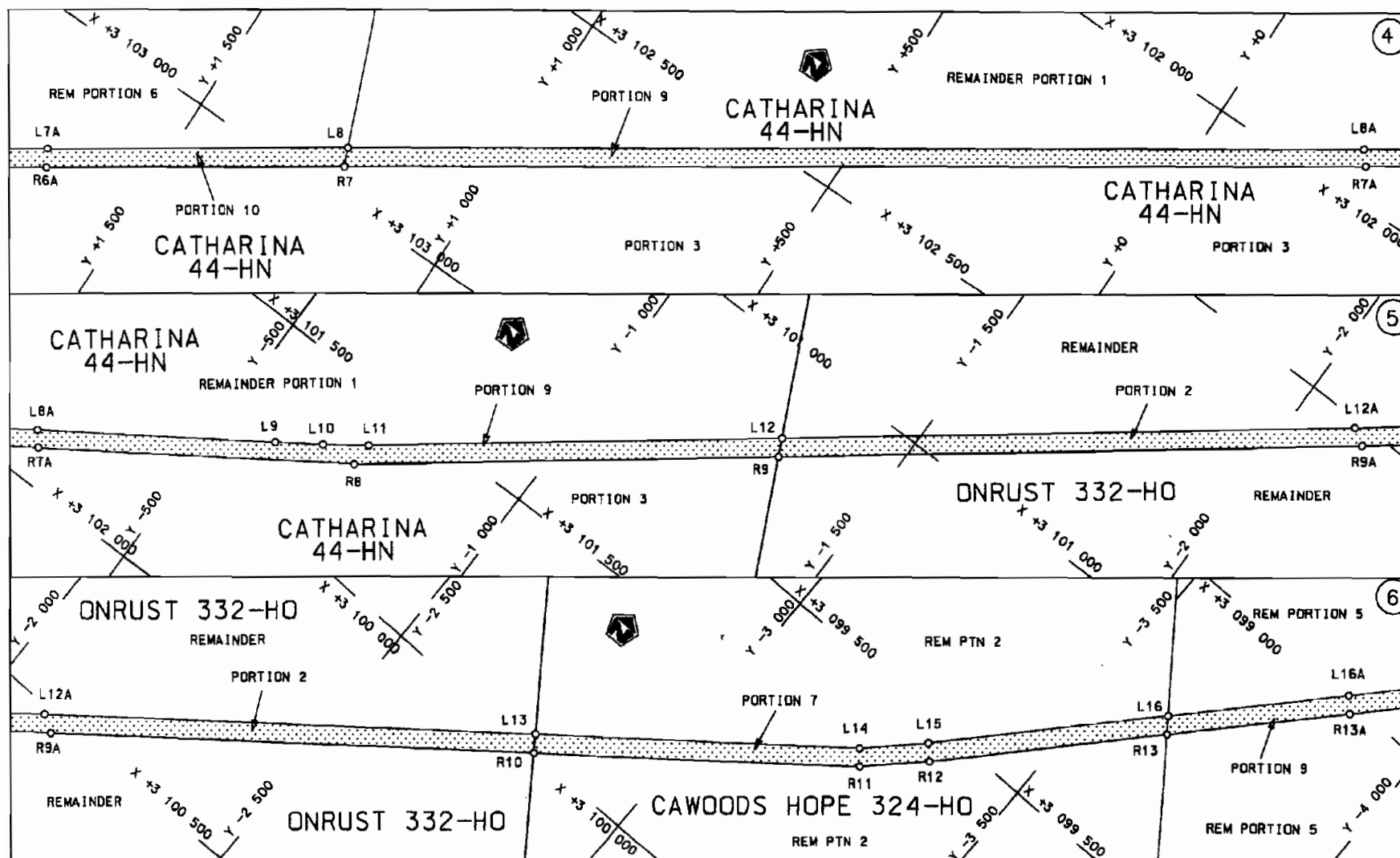
N12

Seksie  
Section

11

Vel  
Sheet 1 van 9  
Plan  
P568/06

D.O.9.A



Die Suid Afrikaanse Nasionale Padagentskap Beperk  
The South African National Roads Agency Limited

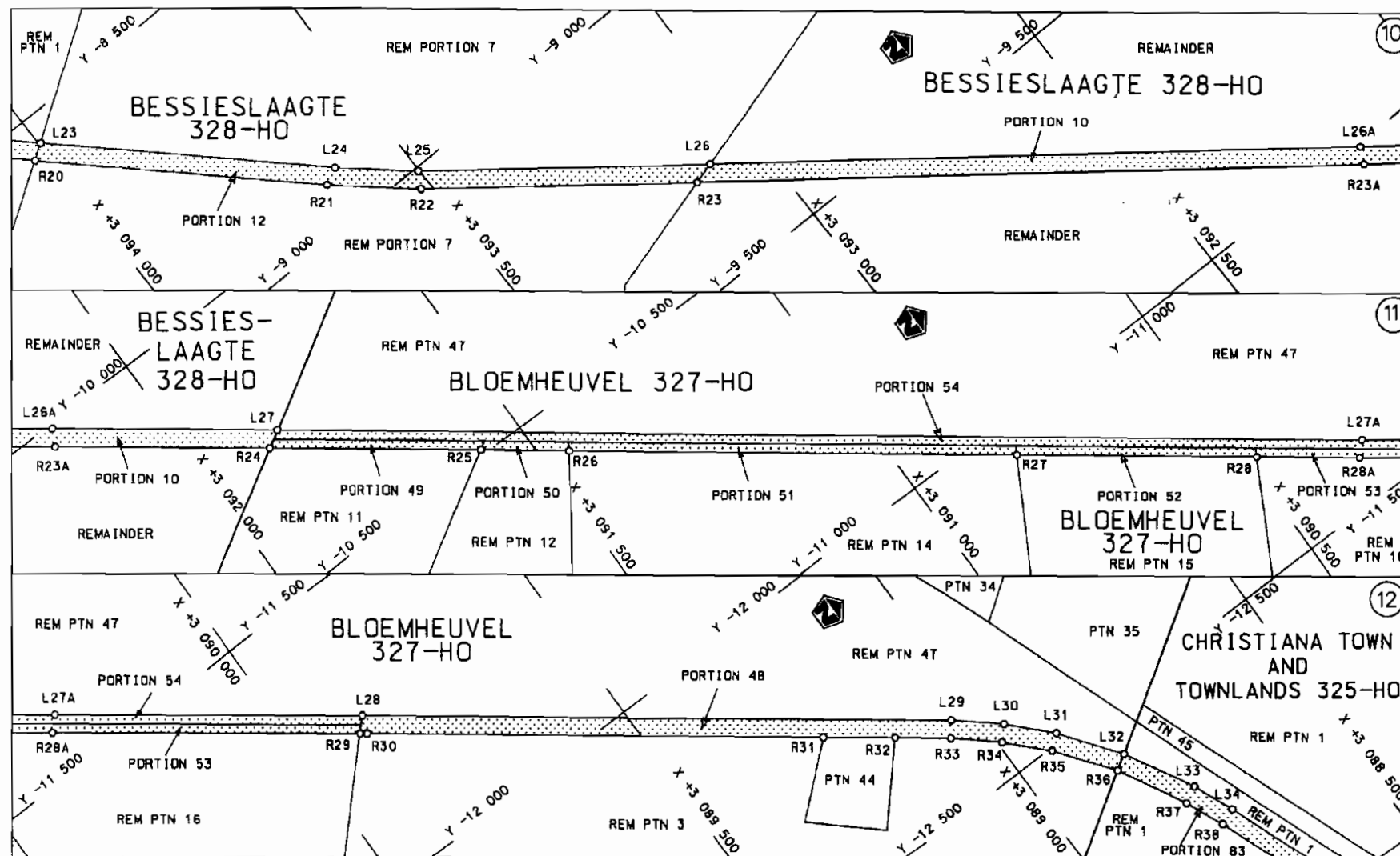
Die figuur getoon  
The figure shown



steldie padreserwe voor van 'n gedeelte  
represents the road reserve of a portion  
van Nasionale Roete N12 Sektie 11  
of National Route Section 11

Vel  
Sheet 2 van 9  
Plan P568/06





Die Suid Afrikaanse Nasionale Padagentskap Beperk  
The South African National Roads Agency Limited

Die figuur getoon  
The figure shown

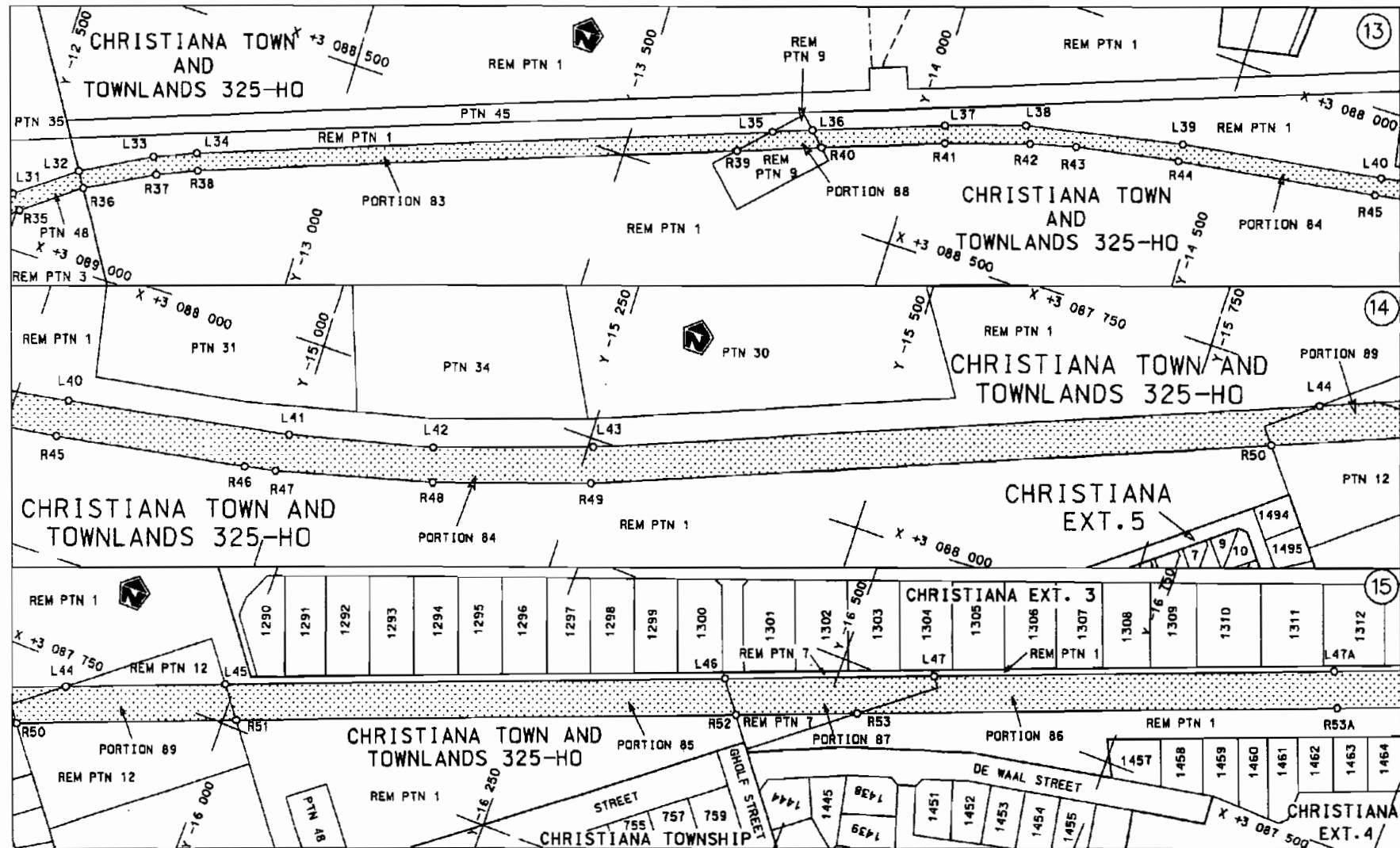


stel die padreserwe voor van 'n gedeelte  
represents the road reserve of a portion  
van Nasionale Roete  
of National Route N12

Seksie  
Section 11

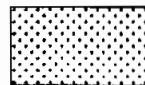
Vel  
Sheet 4 van 9  
Plan P568/06

D.O.9.A



Die Suid Afrikaanse Nasionale Padagentskap Beperk  
The South African National Roads Agency Limited

Die figuur getoon  
The figure shown



stelde padreserwe voor van 'n gedeelte  
represents the road reserve of a portion  
van Nasionale Roete  
of National Route

N12

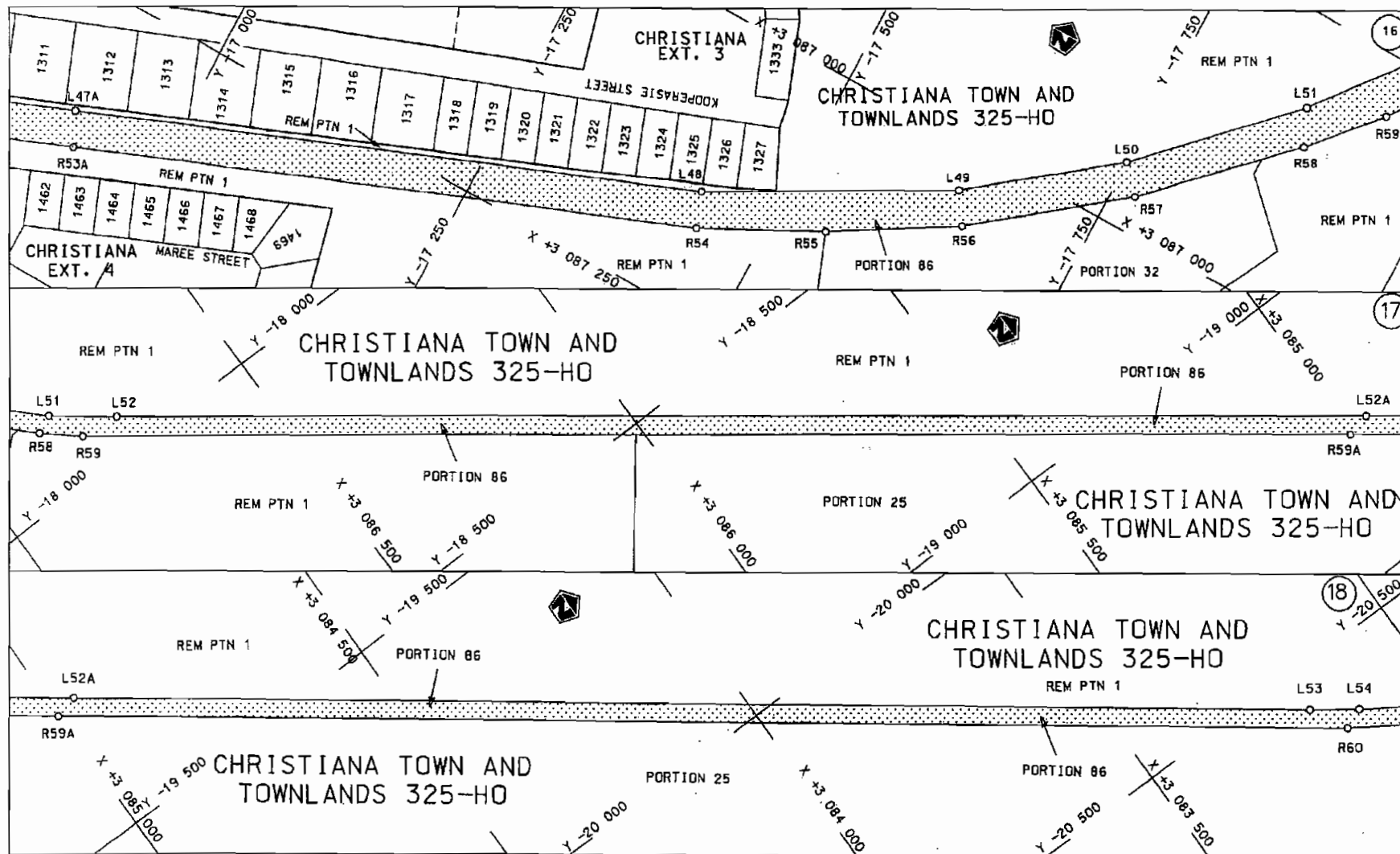
Seksie  
Section

11

Vel  
Sheet 5 van  
of 9  
Plan P568/06

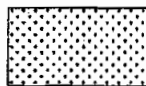
D.O.9.A





Die Suid Afrikaanse Nasionale Padagentskap Beperk  
The South African National Roads Agency Limited

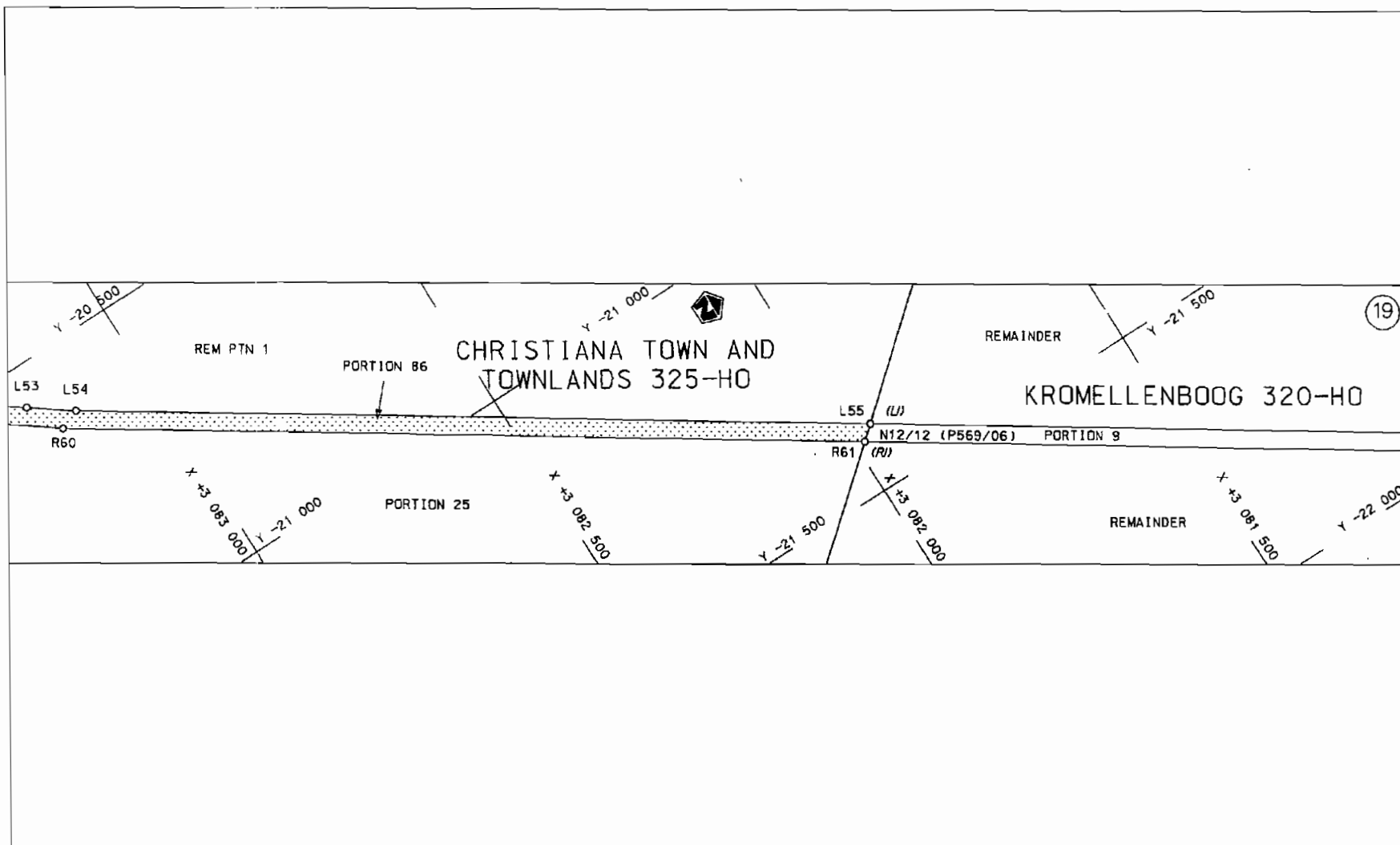
Die figuur getoon  
The figure shown



steldie padreserwe voor van 'n gedeelte  
represents the road reserve of a portion  
van Nasionale Roete N12  
of National Route Section

Vel  
Sheet 6 van 9

Plan P568/06



Die Suid Afrikaanse Nasionale Padagentskap Beperk  
The South African National Roads Agency Limited

Die figuur getoon  
The figure shown



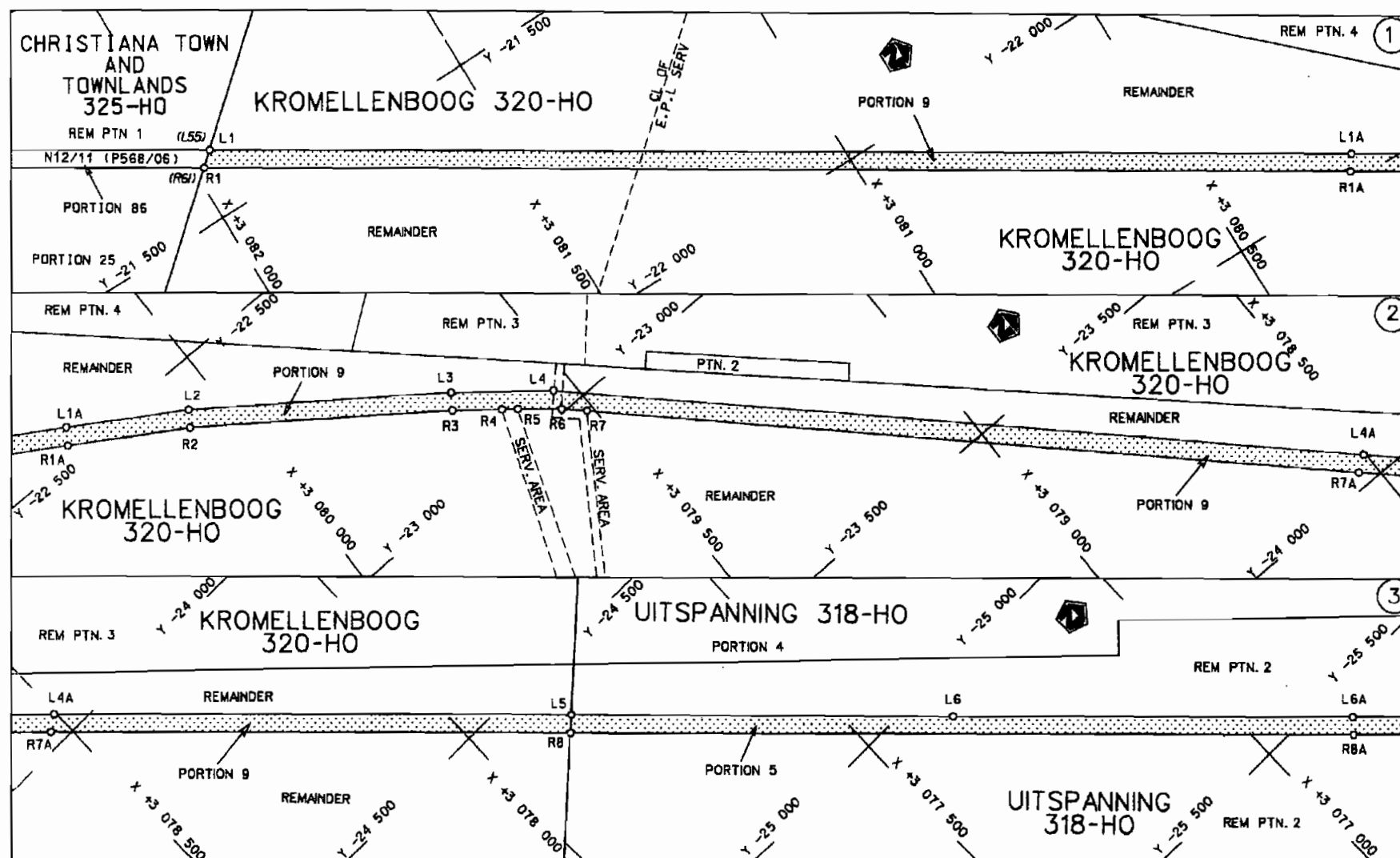
steldie padreserwe voor van 'n gedeelte  
represents the road reserve of a portion  
van Nasionale Roete N12 Seksie 11  
of National Route of National Route

Vel Sheet 7 van of 9  
Plan P568/06

D.O.9.A

PADRESERWE KOORDINATE / ROAD RESERVE CO-ORDINATES						
L1NKERKANT/LEFT HAND SIDE			REGTERKANT/RIGHT HAND SIDE			
	Y	X	WG25°		Y	X
L1	7803.608	3105986.096		R1	7787.627	3106013.119
L2	6017.672	3105212.666		R2	5738.302	3 105 126.808
L3	5749.514	3 105 096.533		R3	2259.274	3 103 608.958
L4	2272.540	3 103 580.042		R4	2161.773	3 103 563.850
L5	2176.653	3103535.917		R5	2081.111	3 103 518.811
L6	2097.274	3103491.791		R6	1 867.166	3 103 376.844
L7	1 879.802	3103345.477		R7	1228.987	3102946.706
L8	1241.378	3 102 915.948		R8	- 730.456	3 101 626.028
L9	- 595.352	3 101 680.204		R9	- 1 321.694	3101 163.226
L10	- 665.347	3 101 632.272		R10	-2805.564	3 100 000.493
L11	- 731.778	3 101 584.381		R11	- 3 259.337	3 099 644.924
L12	- 1 307.376	3 101 133.632		R12	- 3 347.038	3 099 558.851
L13	- 2 787.281	3099974.722		R13	- 3 635.646	3099252.770
L14	- 3 239.012	3 099 620.973		R14	- 4545.398	3 098 290.610
L15	-3325.316	3 099 536.064		R15	- 5 201.212	3 097 595.343
L16	- 3 616.781	3 099 226.969		R16	- 5 976.721	3096773.187
L17	- 4 528.027	3 098 264.296		R17	- 6088.742	3 096654.420
L18	- 5180.098	3097572.722		R18	- 7 479.924	3095177.412
L19	-5957.165	3096748.585		R19	- 7 766.534	3 094 873.120
L20	-6065.702	3 096 633.468		R20	- 8565.955	3 094 024.380
L21	- 7 459.171	3095153.976		R21	- 8922.742	3 093 645.582
L22	-7750.369	3 094 844.803		R22	- 9 033.909	3 093 518.569
L23	- 8 548.288	3093997.626		R23	- 9 327.467	3093127.579
L24	- 8 908.674	3093614.992		R24	- 10264.333	3091 879.765
L25	- 9 006.424	3093502.784		R25	- 10490.542	3 091 578.478
L26	- 9 316.786	3093089.440		R26	- 10 583.947	3 091 454.071
L27	-10247.137	3 091 850.387		R27	- 11 059.435	3090820.767
L28	- 11 729.499	3089876.157		R28	-11313.786	3 090 481.997
L29	-12356.014	3089042.164		R29	-11 752.070	3 089 898.246
L30	-12416.234	3 088 971.624		R30	-11 759.830	3089887.910
L31	-12484.854	3088906.341		R31	-12245.897	3089241.003
L32	- 12584.900	3088831.630		R32	- 12 321.901	3089 139.701
L33	- 12 704.168	3 088 765.595		R33	-12380.847	3 089 061.606
L34	-12775.667	3 088 736.063		R34	- 12439.599	3088993.318
L35	-13742.191	3 088 376.960		R35	- 12 504.618	3 088 930.877
L36	- 13 808.729	3 088 352.239		R36	-12601.518	3088 858.025
L37	- 14 029.396	3 088 270.252		R37	-12718.741	3 088 794.220
L38	- 14 167.288	3 088 224.865		R38	- 12786.896	3088765.147
L39	-14441.663	3088168.895		R39	- 13692.063	3 088 428.917
L40	-14796.020	3088 116.305		R40	- 13833.682	3088376.312
L41	-14994.308	3 088 081.906		R41	- 14039.152	3088299.989
L42	-15119.327	3 088 052.552		R42	- 14 184.311	3 088 253.545
L43	-15254.299	3 088 006.827		R43	- 14263.973	3 088 232.679
L44	- 15857.462	3087769.463		R44	- 14443.568	3 088 199.992
L45	- 15990.849	3 087 716.971		R45	- 14794.940	3088148.466
L46	- 16406.557	3 087 553.377		R46	- 14964.081	3088120.760
L47	- 16 580.176	3 087 485.053		R47	-14992.213	3 088 115.339
L48	-17431.810	3087149.908		R48	- 15 128.301	3088081.419
L49	-17 631.405	3087038.703		R49	- 15262.221	3 088 037.240
L50	- 17 749.266	3086945.783		R50	-15827.599	3087814.959
L51	-17 864.419	3 086 827.609		R51	-16011.125	3087742.804
			Vel	8	Van	9
			Sheet		of	
			P568/06			

[illegible]



Die Suid Afrikaanse Nasionale Padagentskap Beperk  
The South African National Roads Agency Limited

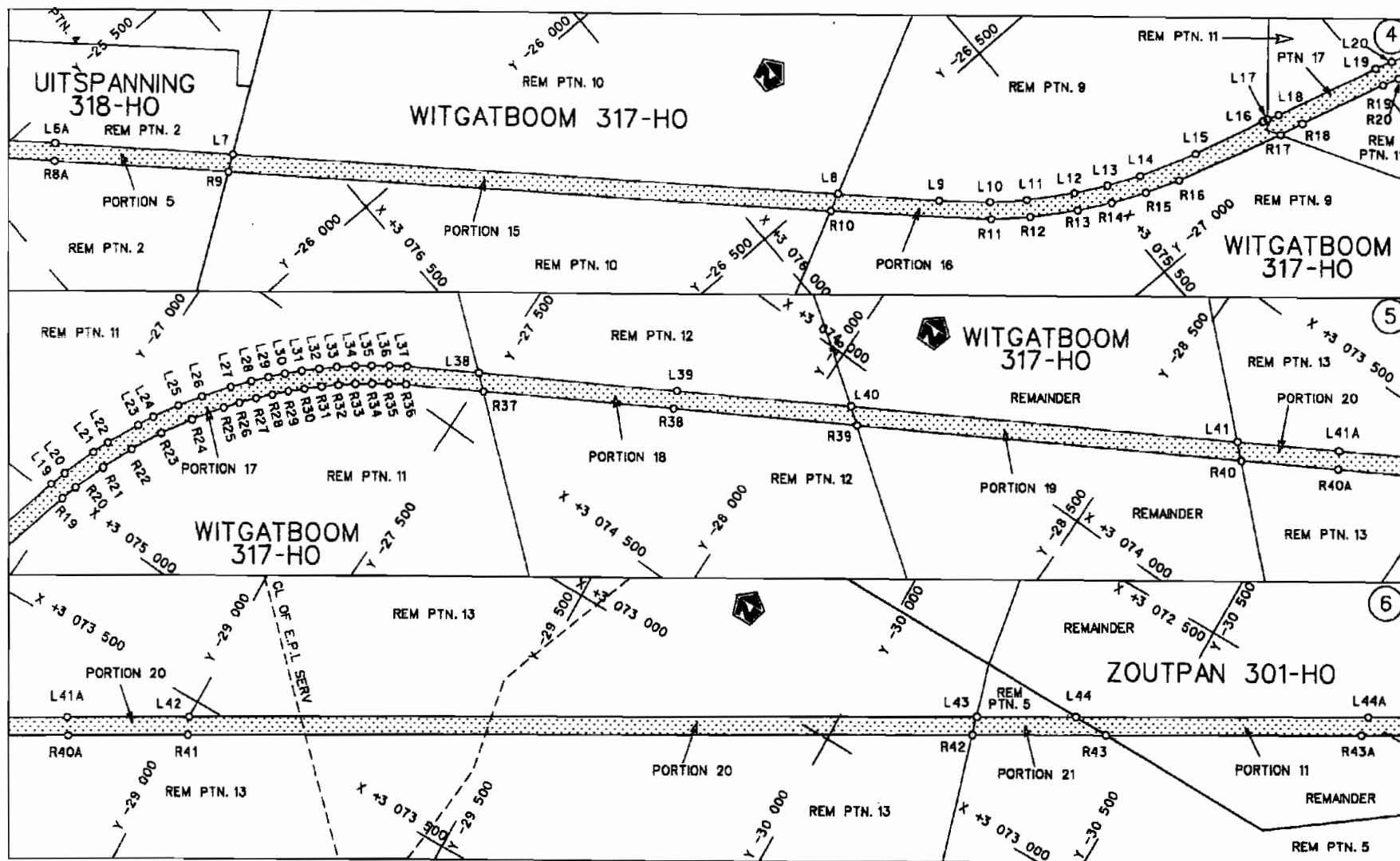
Die figuur getoon  
The figure shown



steldie padreserwe voor van 'n gedeelte  
represents the road reserve of a portion  
van Nasionale Roete N12 Saksie 12  
of National Route Section

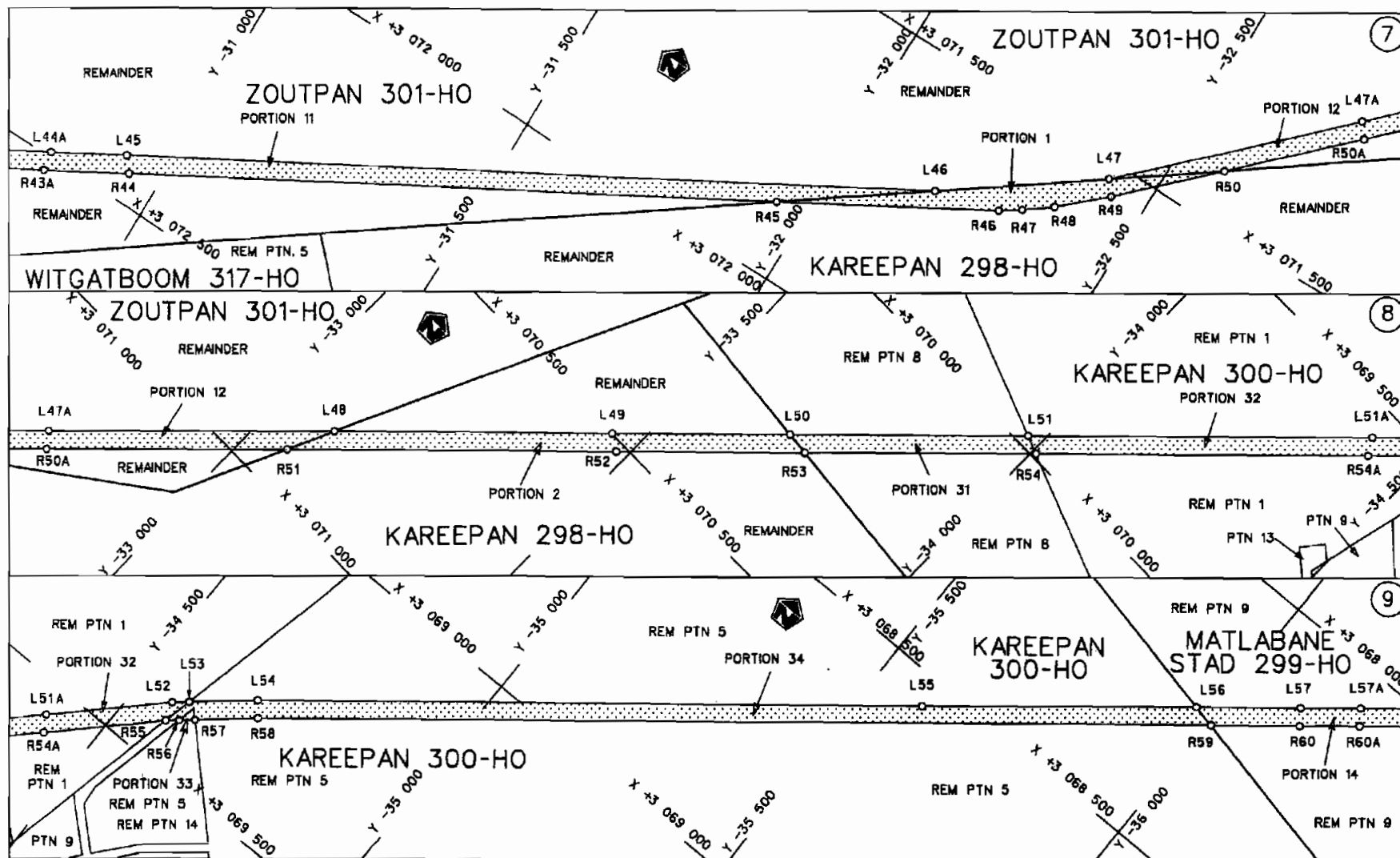
Vel  
Sheet 1 van 10  
Plan P569/06

D.O.9.A



Die Suid Afrikaanse Nasionale Padagentskap Beperk	Die figuur getoon	steeldie padreserwe voor van 'n gedeelte represents the road reserve of a portion van Nasionale Roete N12 Seksie 12	Vel Sheet 2 van of 10
The South African National Roads Agency Limited	The figure shown	of National Route N12 Seksie Section 12	Plan P569/06

D.O.9.A



Die Suid Afrikaanse Nasionale Padagentskap Beperk  
The South African National Roads Agency Limited

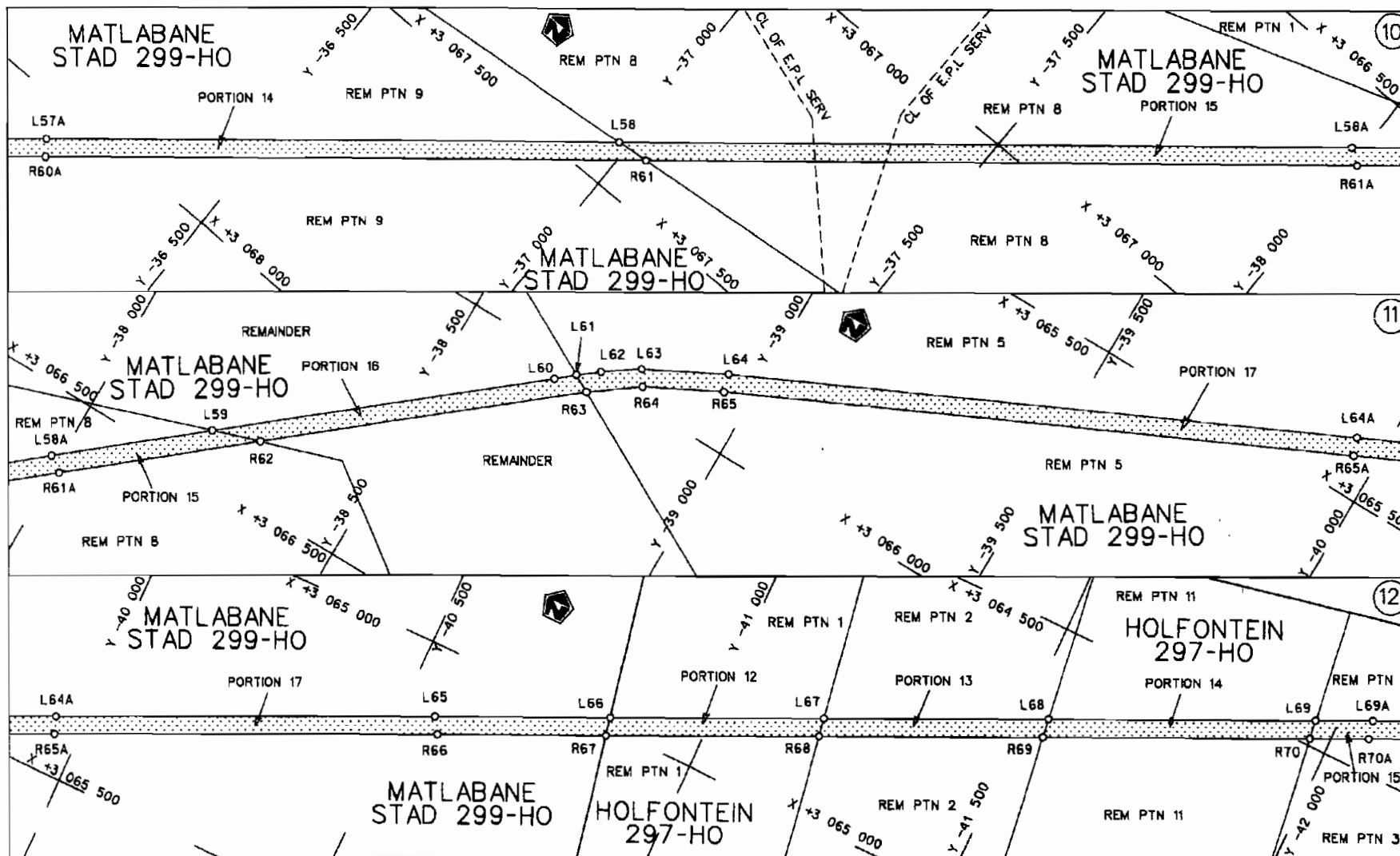
Die figuur getoon  
The figure shown



steldie padreserwe voor van 'n gedeelte  
represents the road reserve of a portion  
van Nasionale Roete N12 Seksie  
of National Route Section 12

Vel  
Sheet 3 van  
of 10  
Plan P569/06

D.O.9.A



Die Suid Afrikaanse Nasionale Padagentskap Beperk  
The South African National Roads Agency Limited

Die figuur getoon  
The figure shown

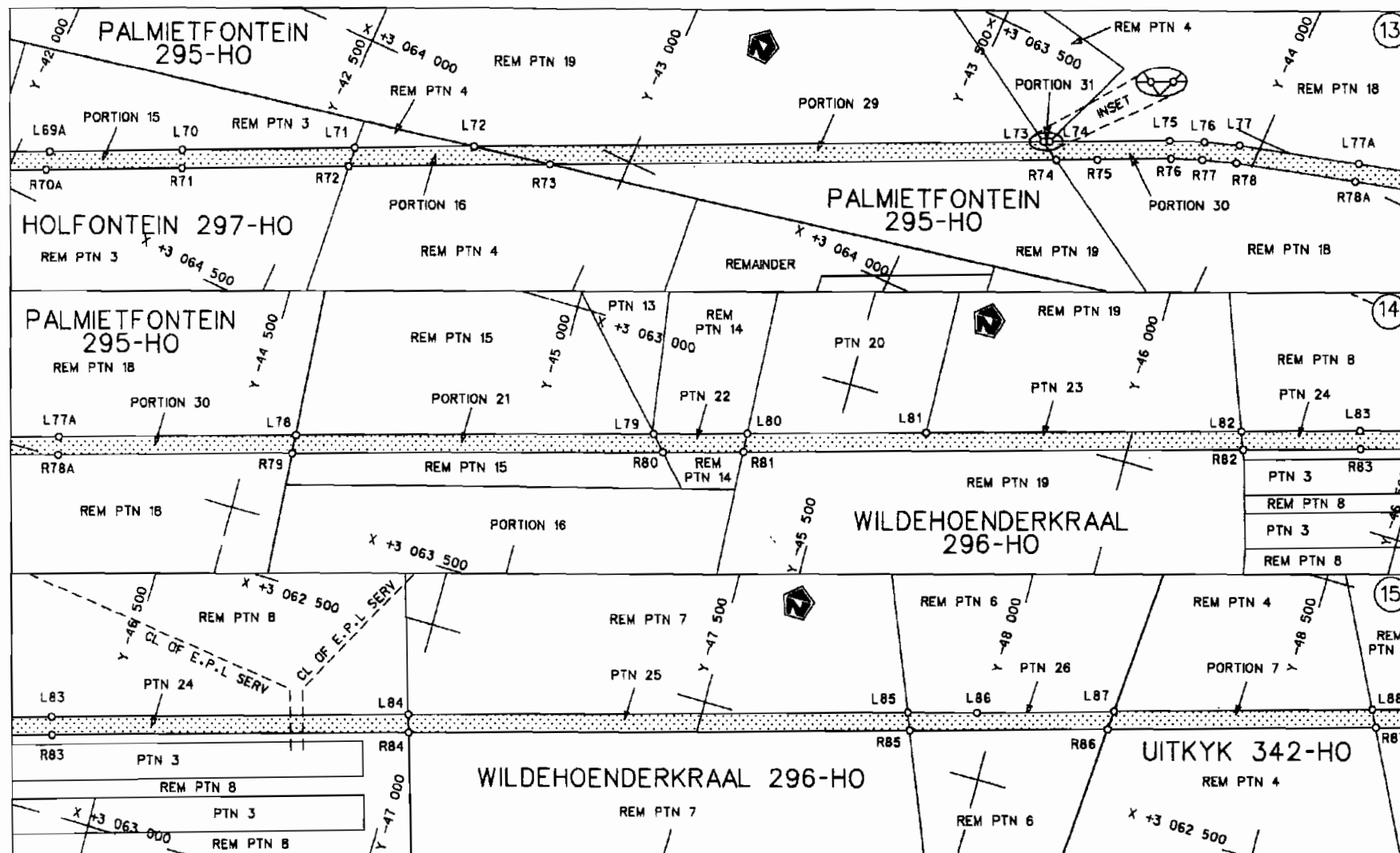


steldie padreserwe voor van 'n gedeelte  
represents the road reserve of a portion  
van Nasionale Roete N12 Seksie  
of National Route Section 12

Vel  
Sheet 4 van  
of 10  
Plan P569/06

D.O.9.A





Die Suid Afrikaanse Nasionale Padagentskap Beperk  
The South African National Roads Agency Limited

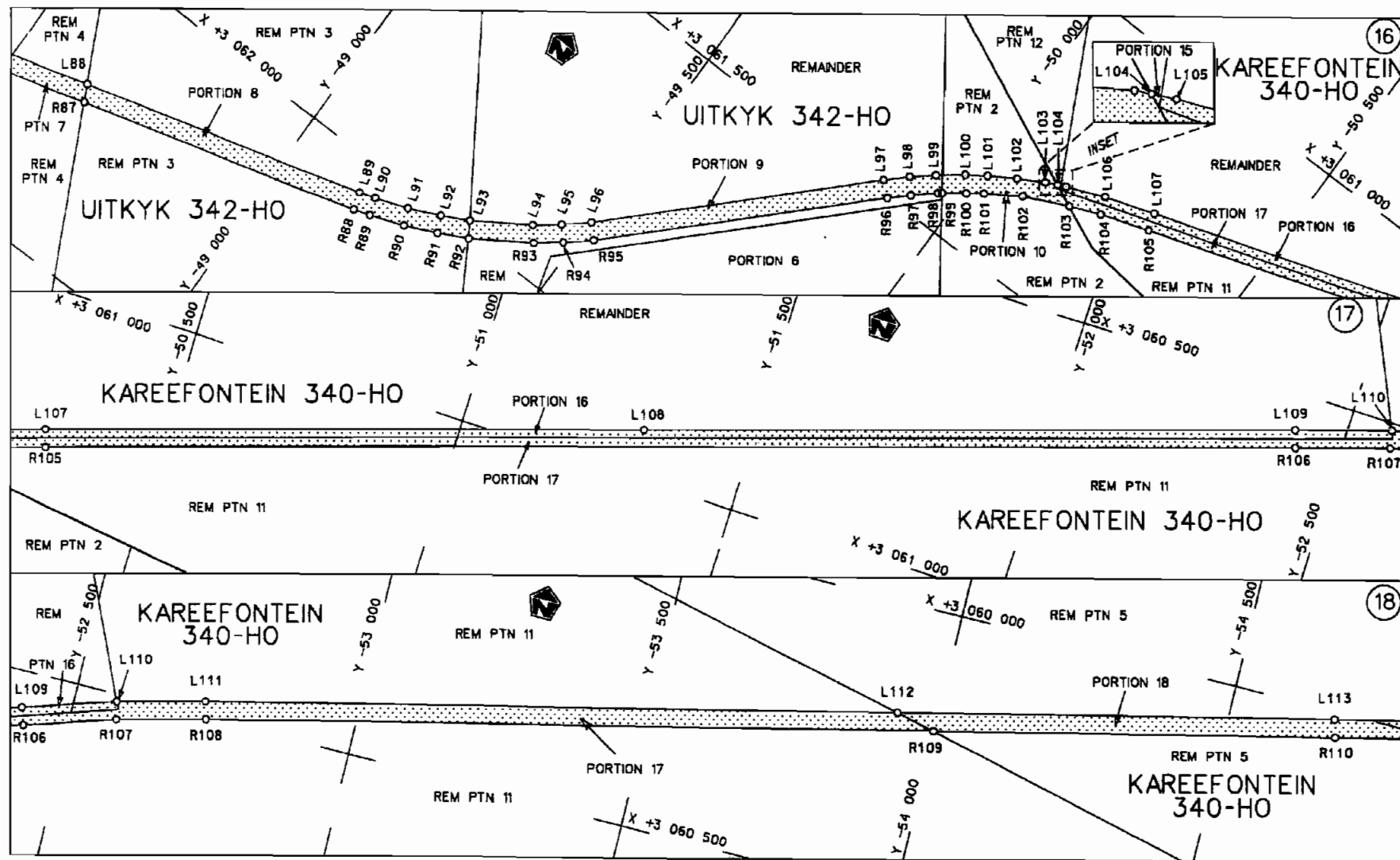
Die figuur getoon  
The figure shown



stelt die padreserwe voor van 'n gedeelte  
represents the road reserve of a portion  
van Nasionale Roete N12 Seksie 12  
of National Route Section

Vel  
Sheet 5 van 10  
Plan P569/06

D.O.9.A



Die Suid Afrikaanse Nasionale Padagentskap Beperk  
The South African National Roads Agency Limited

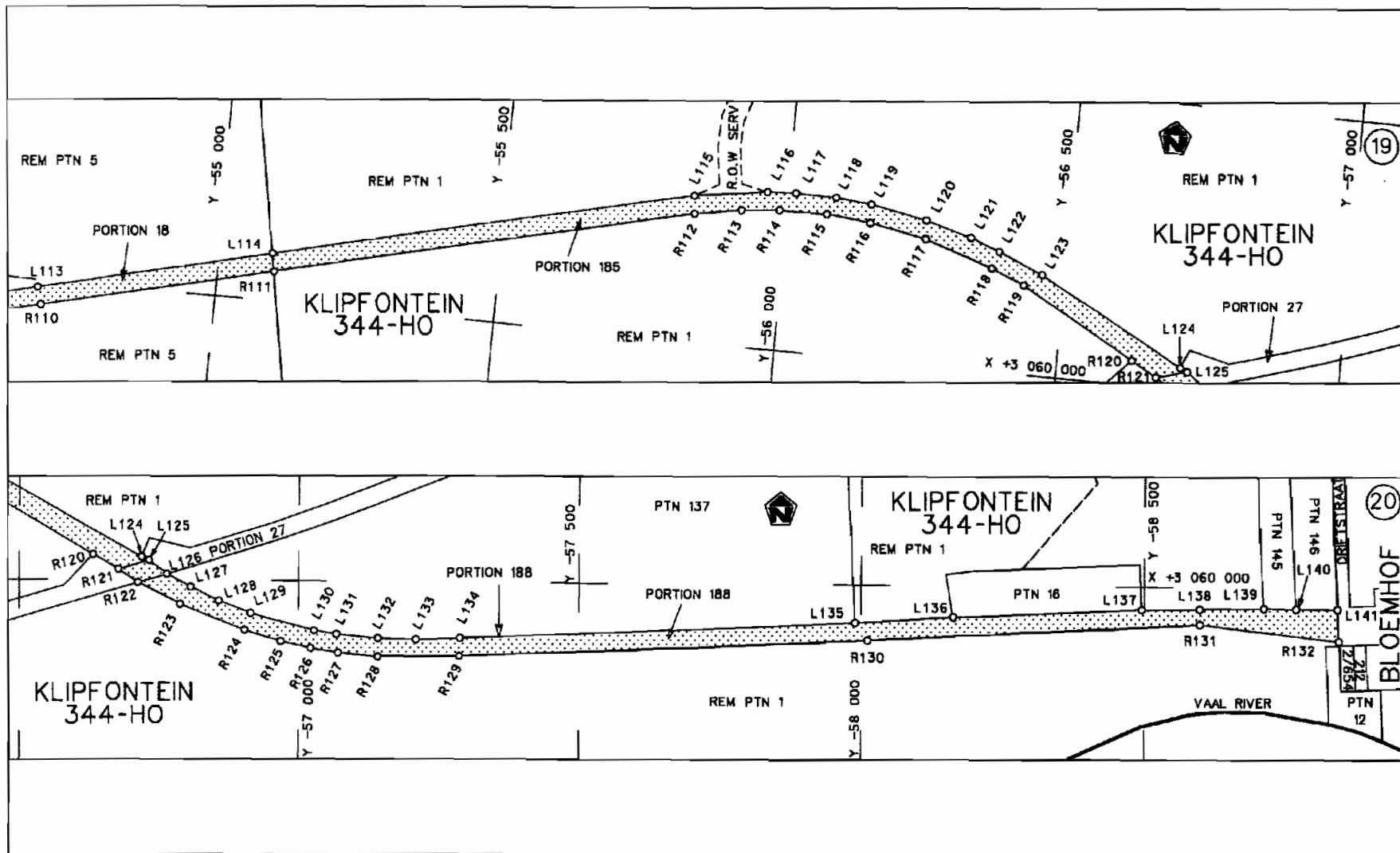
Die figuur getoon  
The figure shown



steldie padreserwe voor van 'n gedeelte  
represents the road reserve of a portion  
van Nasionale Roete N12 Seksie  
of National Route Section 12

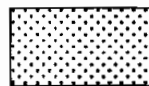
Vel  
Sheet 6 van 10  
Plan P569/06

D.O.9.A



Die Suid Afrikaanse Nasionale Padagentskap Beperk  
The South African National Roads Agency Limited

Die figuur getoon  
The figure shown



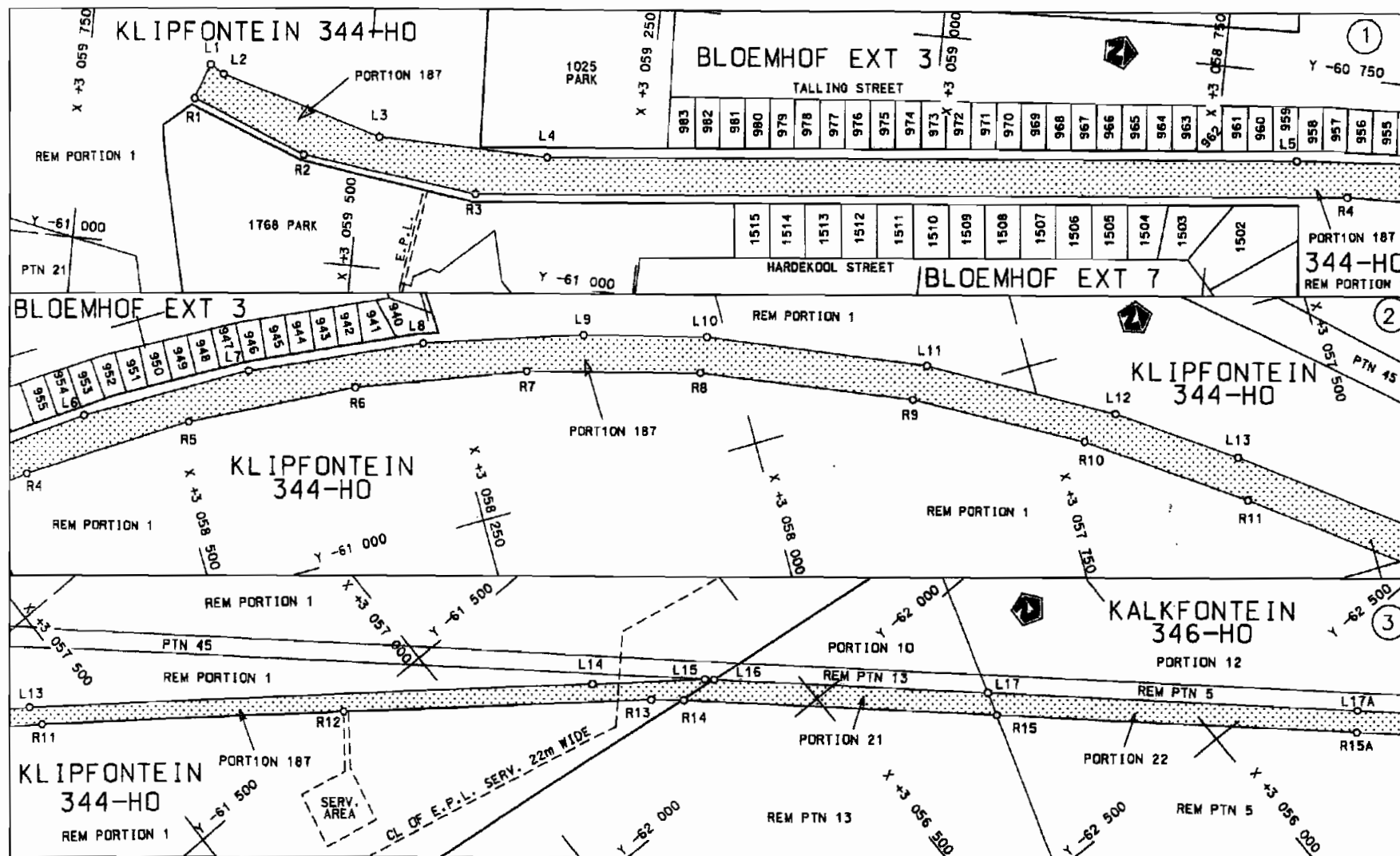
stel die padreserwe voor van 'n gedeelte  
represents the road reserve of a portion  
van Nasionale Roete N12 Sektie 12  
of National Route

Vel  
Sheet 7 van 10  
Plan P569/06

PADRESERWE KOORDINATE / ROAD RESERVE CO-ORDINATES					
L1N KERKANT/LEFT HAND SIDE			1	REGTERKANT/RIGHT HAND SIDE	
	Y	X	WG25°	Y	X
L1	- 21 387.076	3081 957.299	R1	- 21408.126	3 081 982.354
L2	- 22571.460	3 080 056.820	R2	- 22 596.844	3 080 074.680
L3	- 22847.750	3 079 676.850	R3	- 22 873.189	3 079 695.245
L4	- 22960.517	3 079 534.959	R4	- 22 927.800	3 079 626.270
L5	- 24596.293	3 077 840.296	R5	- 22945.240	3 079 604.290
L6	- 25065.599	3077 357.326	R6	- 22 994.360	3 079 544.490
L7	- 25776.946	3076620.773	R7	- 23 025.320	3 079 511.620
L8	- 26523.942	3075849.157	R8	- 24 617.971	3 077 863.539
L9	- 26648.348	3 075 720.479	R9	- 25 794.831	3 076 646.953
L10	- 26708.051	3075654.762	R10	- 26538.542	3 075 878.664
L11	- 26747.219	3075602.947	R11	- 26 732.620	3075673.124
L12	- 26792.592	3075530.824	R12	- 26 774.427	3 075 618.029
L13	- 26820.495	3075477.641	R13	- 26 819.802	3075546.161
L14	- 26844.772	3 075422.987	R14	- 26848.447	3075491.359
L15	- 26878.353	3075323.771	R15	- 26873.521	3075434.641
L16	- 26911.386	3075 196.086	R16	- 26894.925	3075376.00
L17	- 26914.140	3 075 188.034	R17	- 26949.594	3 075 188.270
L18	- 26920.926	3 075 168.197	R18	- 26959.254	3075146.153
L19	- 26971.143	3074985.340	R19	- 27001.353	3074 994.030
L20	- 26980.372	3074956.177	R20	- 27010.439	3074 965.403
L21	- 27002.323	3074898.096	R21	- 27031.599	3 074 909.736
L22	- 27014.594	3074869.706	R22	- 27055.958	3074 855.004
L23	- 27042.381	3074814.110	R23	- 27084.324	3074801.915
L24	- 27057.132	3074787.367	R24	- 27115.719	3074751.845
L25	- 27081.943	3074746.133	R25	- 27150.888	3 074703.134
L26	- 27107.796	3074709.338	R26	- 27169.399	3074680.075
L27	- 27 140.621	3074665.937	R27	- 27189.506	3074656.588
L28	- 27 165.347	3074636.810	R28	- 27 209.479	3 074635.045
L29	- 27186.350	3074613.839	R29	- 27 230.530	3074613.417
L30	- 27 208.163	3074591.714	R30	- 27 251.740	3 074 593.118
L31	- 27 230.503	3074570.214	R31	- 27 274.271	3074572.743
L32	- 27253.542	3074549.734	R32	- 27 297.189	3074553.723
L33	- 27277.230	3074529.956	R33	- 27320.302	3 074 535.483
L34	- 27302.654	3074509.796	R34	- 27344.876	3074517.795
L35	- 27326.582	3074492.514	R35	- 27369.245	3074 501.315
L36	- 27352.160	3074475.081	R36	- 27394.945	3074485.100
L37	- 27378.787	3074458.363	R37	- 27513.815	3074416.892
L38	- 27 488.935	3074395.143	R38	- 27805.718	3074249.398
L39	- 27793.228	3 074 220.490	R39	- 28089.970	3074086.463
L40	- 28062.640	3074066.038	R40	- 28678.538	3073 749.093
L41	- 28655.056	3 073 726.409	R41	- 29012.851	3073 557.463
L42	- 28 999.386	3073529.006	R42	- 30 219.462	3 072 865.697
L43	- 30 210.390	3 072 834.699	R43	- 30 423.985	3072748.442
L44	- 30 362.546	3072747.461	R44	- 30 945.796	3 072 449.281
L45	- 30 925.760	3 072 424.554	R45	- 31 944.610	3 071 876.300
L46	- 32171.910	3071 710.220	R46	- 32 284.500	3071 679.739
L47	- 32 419.143	3071 529.557	R47	- 32 318.913	3 071 656.604
L48	- 33105.690	3 070 845.596	R48	- 32 364.183	3 071 621.645
L49	- 33 454.299	3070498.710	R49	- 32 438.919	3 071 553.482
L50	- 33 677.331	3 070 276.941	R50	- 32 583.772	3 071 409.262
L51	- 33 975.556	3 069 980.404	R51	- 33 067.297	3070927.659
			Vel Sheet	8 Van 10 of	P569J06

PADRESERWE KOORDINATE / ROAD RESERVE CO-ORDINATES					
L1NKERKANT/LEFT HAND SIDE			REGTERKANT/RIGHT HAND SIDE		
	Y	X	WG25	Y	X
L52	- 34 565.247	3069394.051	R52	- 33481.177	3070515.778
L53	- 34 588.924	3069373.519	R53	- 33 717.627	3 070 280.477
L54	- 34681.229	3 069 293.477	R54	- 34 007.150	3 069 992.362
L55	- 35 595.765	3068551.349	R55	- 34576.737	3 069425.903
L56	- 35 970.045	3068245.110	R56	- 34 594.999	3069410.007
L57	-36111.148	3068130.332	R57	- 34616.529	3 069 391.266
L58	- 36 982.819	3067421426	R58	- 34 701.181	3069317.580
L59	- 38 207.769	3 066425.209	R59	- 36 009.484	3 068 253.386
L60	- 38 684.305	3 066 039.421	R60	- 36 129.961	3 068 155.388
L61	-38714.359	3 066 013.232	R61	- 37 039.041	3 067415.977
L62	- 38 748.656	3 065 986.469	R62	- 38 291.237	3 066 397.487
L63	- 38 807.655	3065945.999	R63	- 38 744.235	3066 029.036
L64	- 38 943.825	3065874.712	R64	- 38 824.332	3 065 971.163
L65	- 40558.127	3 065 115.642	R65	- 38 952.051	3 065 905.085
L66	- 40 838.946	3 064 983.639	R66	-40575.326	3065141.979
L67	- 41 180.257	3 064 823.201	R67	-40845.300	3065015.121
L68	- 41 537.434	3 064 655.305	R68	- 41185.523	3 064 855.255
L69	- 41 962.504	3 064 455.495	R69	-41541.641	3064 687.919
L70	-42267.994	3064311.895	R70	- 41 966.679	3 064 488.199
L71	-42548.287	3 064 180.091	R71	- 42 280.237	3 064 340.862
L72	- 42738.597	3 064 090.600	R72	- 42 551.024	3064213.531
L73	- 43 649.377	3063662.316	R73	- 42 872.407	3 064 062.409
L74	- 43658.384	3063658.081	R74	- 43 681.820	3063681.803
L75	- 43849.970	3063567.990	R75	- 43 747.286	3063651.019
L76	-43906.746	3063544136	R76	- 43 864.923	3 063 595.468
L77	-43965.632	3063523.846	R77	-43916.075	3 063 573.877
L78	-44 576.993	3 063 350.344	R78	- 43973.073	3 063 554.137
L79	- 45188.253	3 063 176.871	R79	- 44578.981	3063382.186
L80	- 45 347.103	3063131.789	R80	- 45 212.049	3 063 202.528
L81	- 45 651.716	3 063 045.454	R81	- 45348.750	3063163.733
L82	- 46185.834	3 062 893.866	R82	- 46196.720	3 062 923.088
L83	- 46 386.989	3062 836.776	R83	- 46396.061	3 062 866.517
L84	- 47 000.761	3 062 662.592	R84	- 47 009.715	3 062 692.385
L85	- 47 850.699	3 062 421.386	R85	- 47 862.406	3062450.422
L86	- 47968.086	3062389.414	R86	- 48196.726	3 062 355.554
L87	- 48199.385	3 062 322.469	R87	- 48 652.085	3062226448
L88	- 48 637.895	3 062 198.024	R88	- 49150.072	3062085.256
L89	-49141.026	3 062 055.240	R89	-49179.170	3 062 076.309
L90	- 49169.060	3 062 046.498	R90	- 49 238.261	3062054.412
L91	- 49 226.071	3062026.055	R91	- 49 293.411	3 062 029.899
L92	- 49 280.135	3062001.735	R92	- 49 343.541	3062004.006
L93	- 49326.784	3 061 977.245	R93	- 49 441.214	3061 940.486
L94	- 49 421.413	3 061 916.265	R94	- 49 482.520	3 061 908.422
L95	- 49 461.556	3 061 884.613	R95	- 49523.525	3061 872.264
L96	- 49 501.592	3061 849.961	R96	- 49 897.240	3061 501.135
L97	- 49 873.579	3061 479.976	R97	- 49 928.032	3061472.104
L98	- 49 907.302	3061 447.667	R98	-49963.837	3061 440.865
L99	- 49 942.777	3061417.774	R99	- 49970.053	3061436.210
L100	- 49 983.830	3061 386.017	R100	- 50 003.991	3061410.797
L101	- 50 016.243	3 061 363.970	R101	- 50 029.540	3061 392.524
L102	- 50 061.427	3 061 336.066	R102	- 50 087.562	3 061 354.773
			Vel 9 Sheet	Van 10 of	P569/06

PADRESERWE KOORDINATE / ROAD RESERVE CO-ORDINATES					
L1NKERKANT/LEFT HAND SIDE			REGTERKANT/RIGHT HAND SIDE		
	Y	X	WG25	Y	X
L103	-50105.171	3061 311.598	R103	- 50163.822	3061 319.737
L104	-50125.110	3 061 302.268	R104	- 50 217.470	3061 297.938
L105	- 50 138.835	3 061 295.846	R105	- 50 301.314	3061 269.482
L106	- 50204.995	3 061 268.343	R106	- 52 421.006	3060593.210
L107	- 50 291.953	3 061 239.554	R107	- 52 580.553	3 060 543.262
L108	- 51 311.051	3 060 915.949	R108	- 52 736.864	3060504.211
L109	- 52411.315	3060563.631	R109	- 53 9.98.245	3060207.225
L110	- 52 574.331	3060512.682	R110	- 54 691.662	3 060 043.964
L111	- 52 728.806	3060474.365	R111	- 55101.862	3059947.453
L112	- 53 928.958	3 060 191.484	R112	- 55 836.960	3059774.500
L113	- 54683.176	3060013.711	R113	- 55 919.770	3 059 760.270
L114	- 55 096.471	3059916.333	R114	- 55 987.040	3 059 754.090
L115	- 55 834.224	3059742.507	R115	- 56 071.150	3 059 752.870
L116	- 55 962.596	3 059 724.070	R116	-56149.130	3 059 760.250
L117	- 56 013.295	3059721.174	R117	- 56 248.998	3 059 778.602
L118	- 56 084.960	3 059 722.200	R118	- 56 369.660	3 059 818.250
L119	- 56148.280	3059727.930	R119	- 56428.795	3 059 842.609
L120	- 56 247.400	3059746.010	R120	- 56 631.070	3059956.681
L121	- 56 328.125	3 059 768.647	R121	- 56 676.190	3 059 981.832
L122	- 56 380.280	3059787.670	R122	- 56 711.010	3 060 004.520
L123	- 56460.010	3 059 821.230	R123	- 56 786.519	3060042.074
L124	- 56 717.610	3 059 960.773	R124	- 56 902.530	3060086.180
L125	- 56 730.481	3 059 966.273	R125	- 56 967.770	3060105070
L126	- 56 762.640	3 059 989.624	R126	- 57 021.917	3060116.766
L127	- 56 805.660	3060012.115	R127	- 57 072.382	3 060 124.839
L128	- 56 855.690	3 060 035.807	R128	- 57142.250	3060131.110
L129	- 56 913.291	3 060 056.658	R129	- 57 286.940	3060129.180
L130	- 57 027.951	3 060 085.951	R130	- 58 011.257	3 060 096.066
L131	- 57 069.391	3 060 092.402	R131	- 58598.560	3060064.122
L132	- 57 142.662	3 060 099.003	R132	- 58 844.598	3 060 092.165
L133	- 57 210.073	3 060 100.535			
L134	- 57 288.224	3 060 097.556			
L135	- 57 988.764	3 060 065.373			
L136	- 58 161.896	3 060 054.659			
L137	- 58495.266	3 060 039.490			
L138	- 58 597.907	3060037.818			
L139	- 58 711.580	3 060 035.930			
L140	- 58 768.530	3 060 036.260			
L141	- 58 842.049	3 060 036.698			
			Vel	10	Van
			Sheet		of
				10	P569/06



Die Suid Afrikaanse Nasionale Padagentskap Beperk  
The South African National Roads Agency Limited

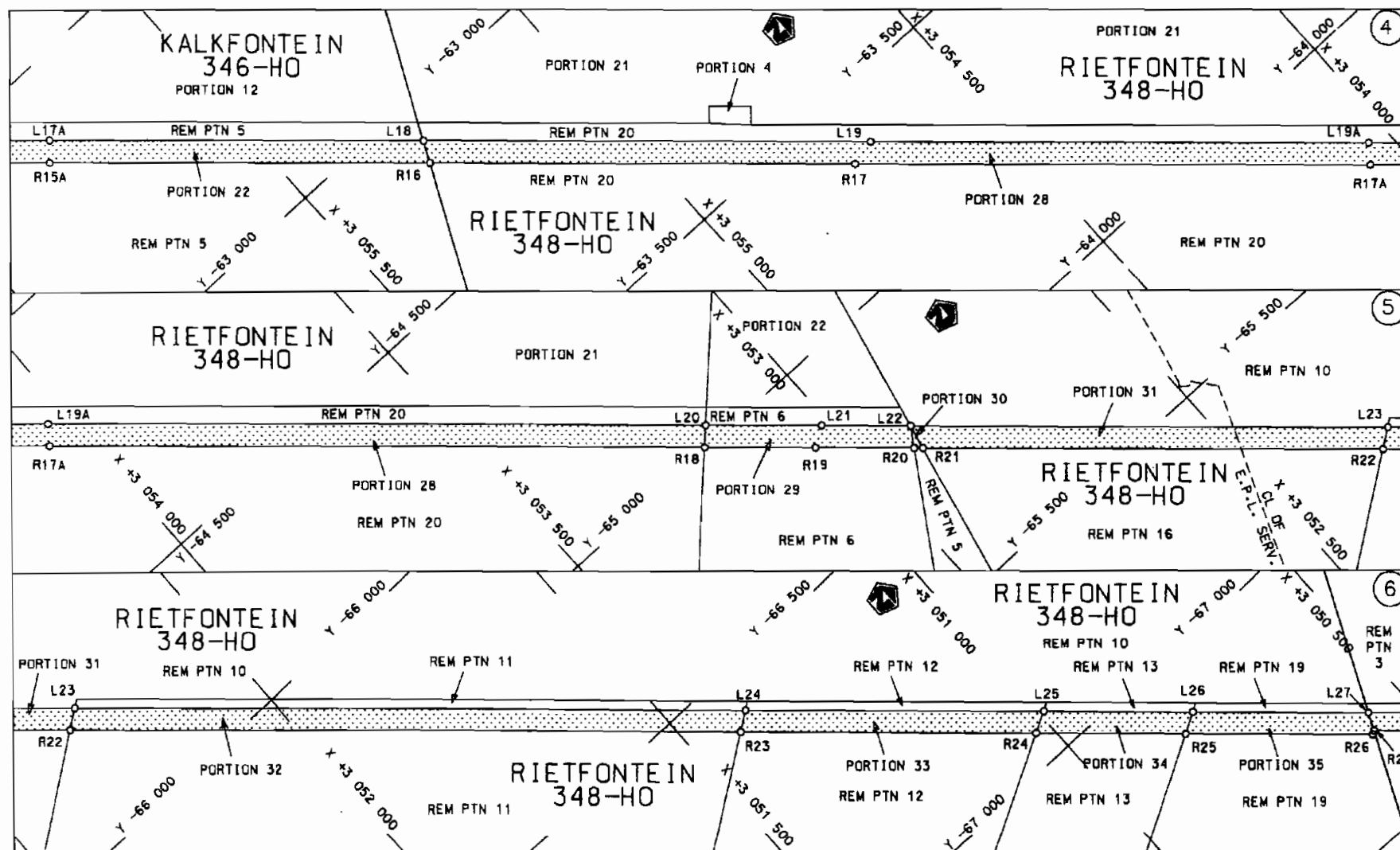
Die figuur getoon  
The figure shown




steldie padreserwe voor van 'n gedeelte  
represents the road reserve of a portion  
van Nasionale Roete N12 Seksie 14  
of National Route

Vol  
Sheet 1 van 13  
Plan P570/06

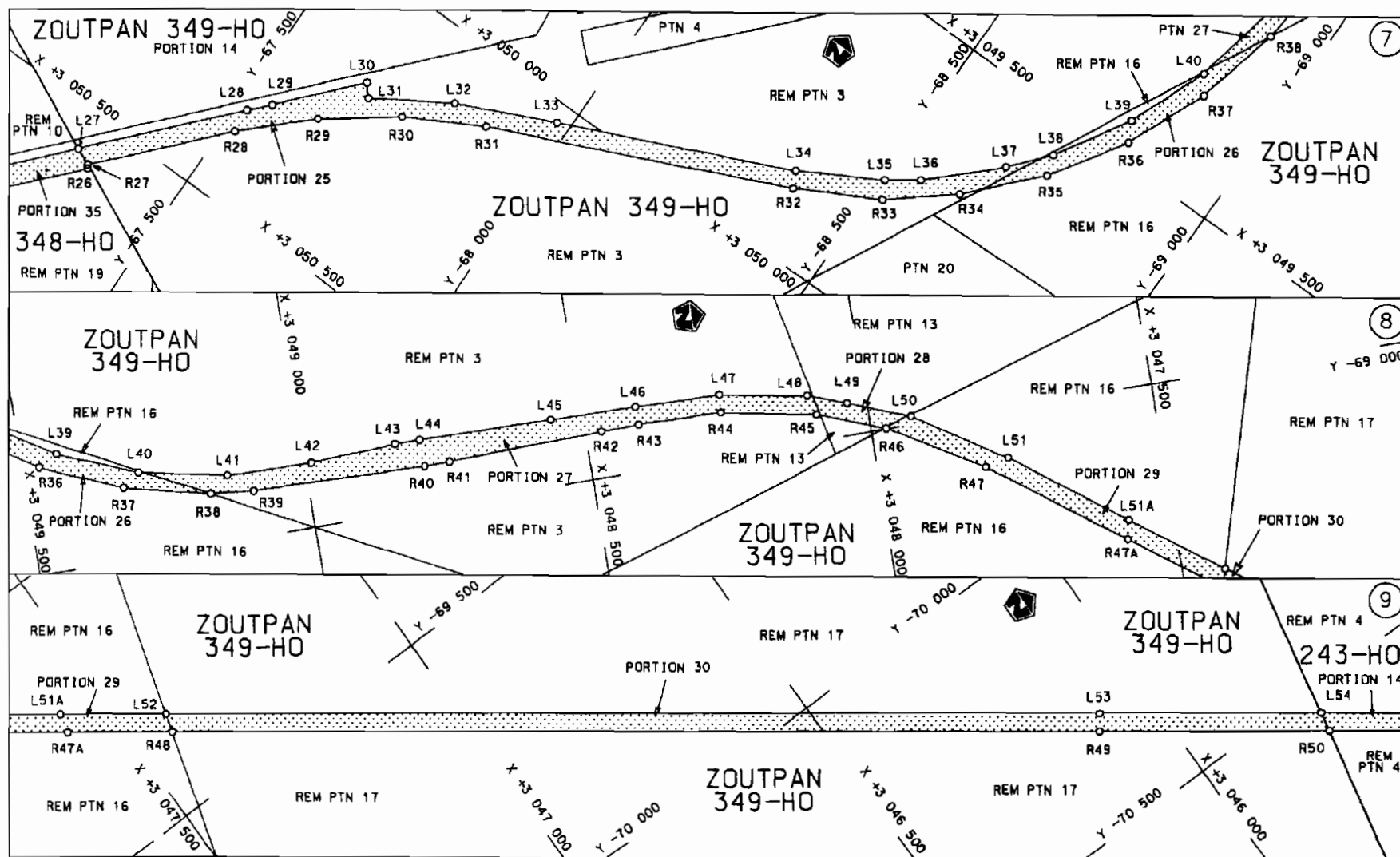
D.O.9.A



<p>Die Suid Afrikaanse Nasionale Padagentskap Beperk</p> <p>The South African National Roads Agency Limited</p>	<p>Die figuur getoon</p> <p>The figure shown</p> 	<p>steldie padreserwe voor van 'n gedeelte</p> <p>represents the road reserve of a portion</p> <p>van Nasionale Roete N17</p> <p>of National Route</p> <p>Seksie 14</p>	<p>Vel Sheet 2 van 13</p> <p>Plan P570/06</p>
---	---	---	---

D.O.9.A





Die Suid Afrikaanse Nasionale Padagentskap Beperk  
The South African National Roads Agency Limited

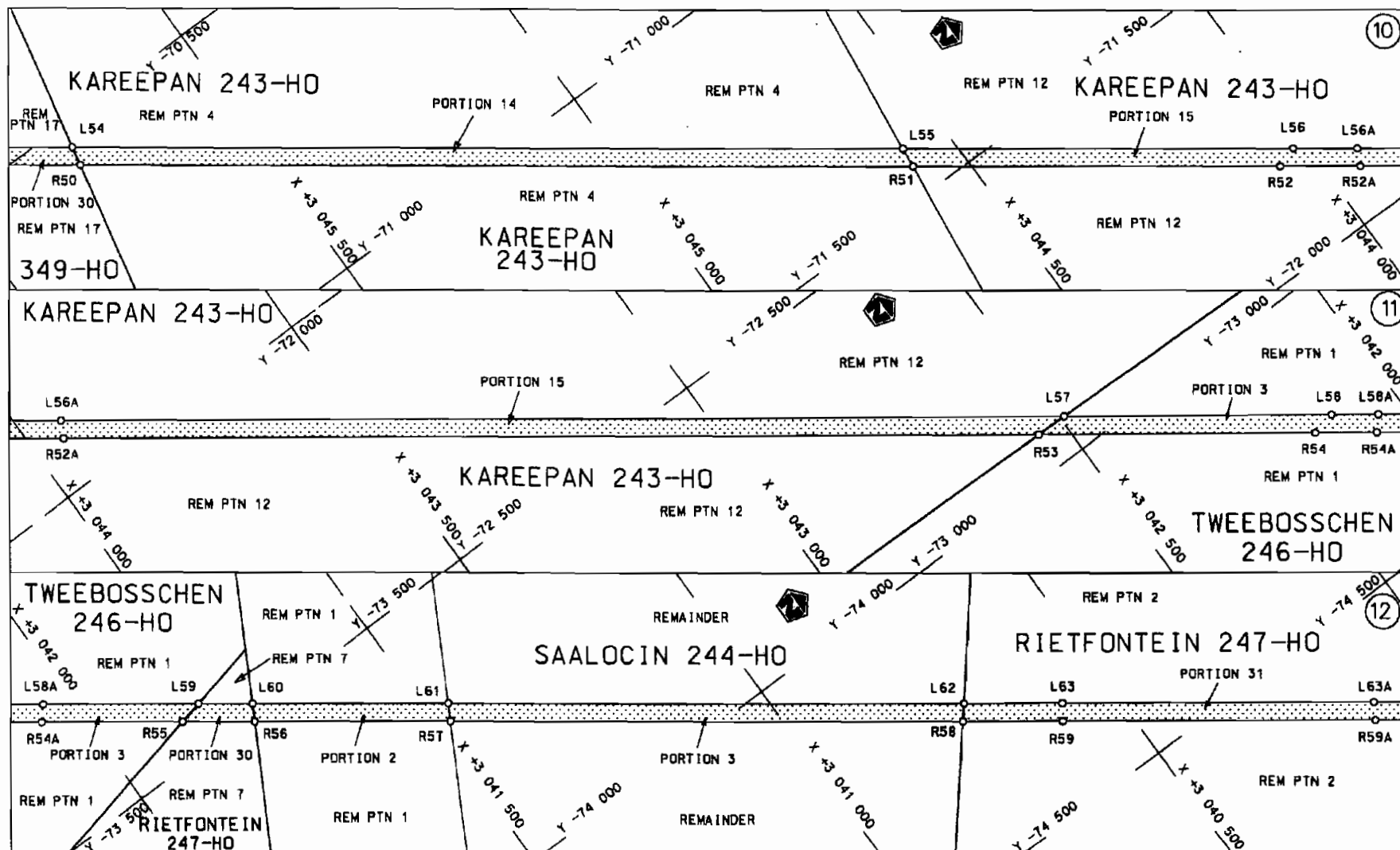
Die figuur getoon  
The figure shown

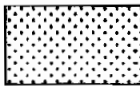


ste die padreserwe voor van 'n gedeelte  
represents the road reserve of a portion  
van Nasionale Roete N12 Seksie Section  
of National Route 14

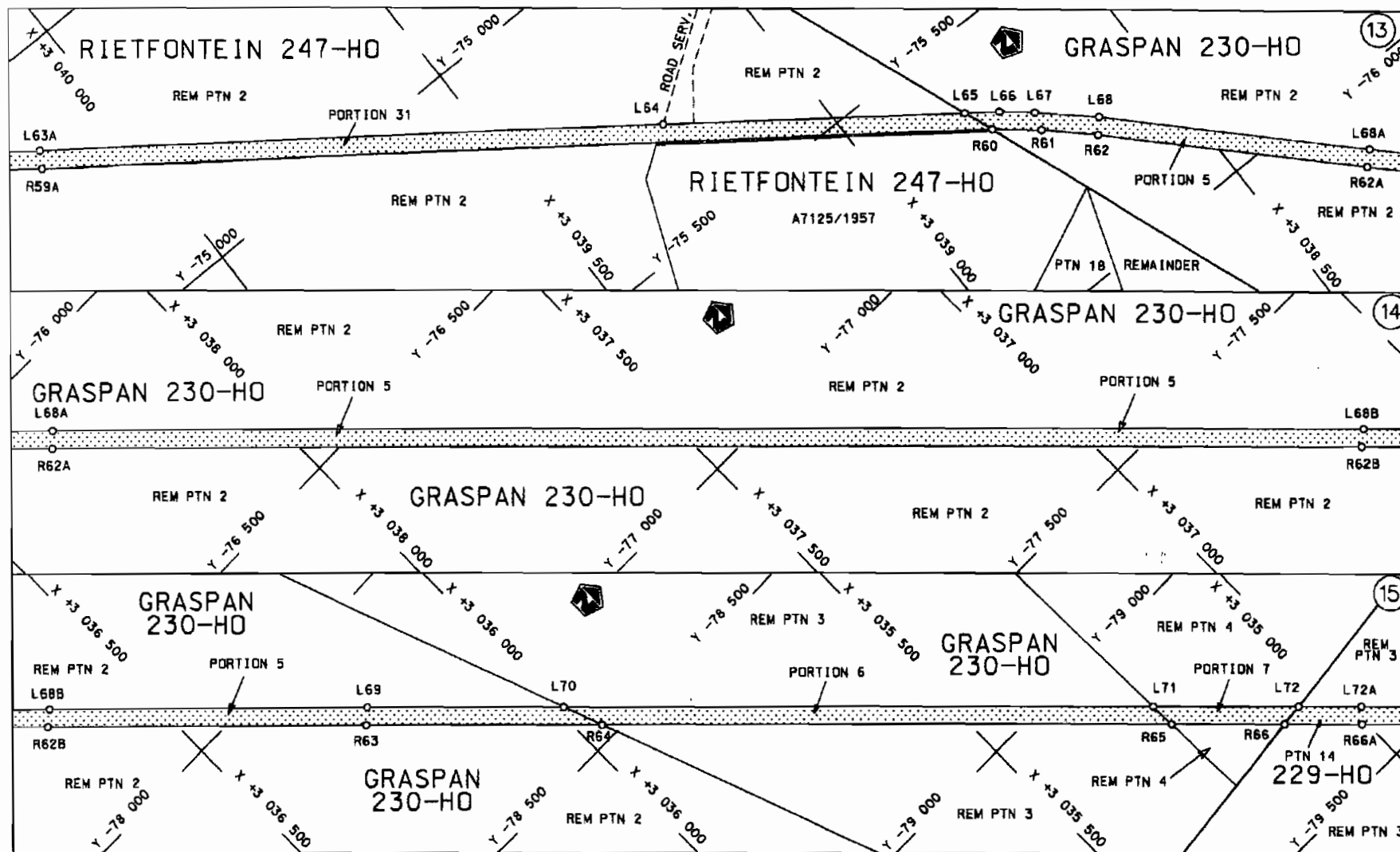
Vel Sheet 3 van of 13  
Plan P570/06

D.O.9.A



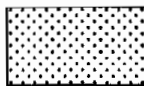
<p>Die Suid Afrikaanse Nasionale Padagentskap Beperk The South African National Roads Agency Limited</p>	<p>Die figuur getoon The figure shown</p> 	<p>ste die podreserwe voor van 'n gedeelte represents the road reserve of a portion van Nasionale Roete N12 Sektie 14 of National Route</p>	<p>Vel Sheet 4 van 13 Plan P570/06</p>
--	--	---	--

D.O.9.A



Die Suid Afrikaanse Nasionale Padagentskap Beperk  
The South African National Roads Agency Limited

Die figuur getoon  
The figure shown



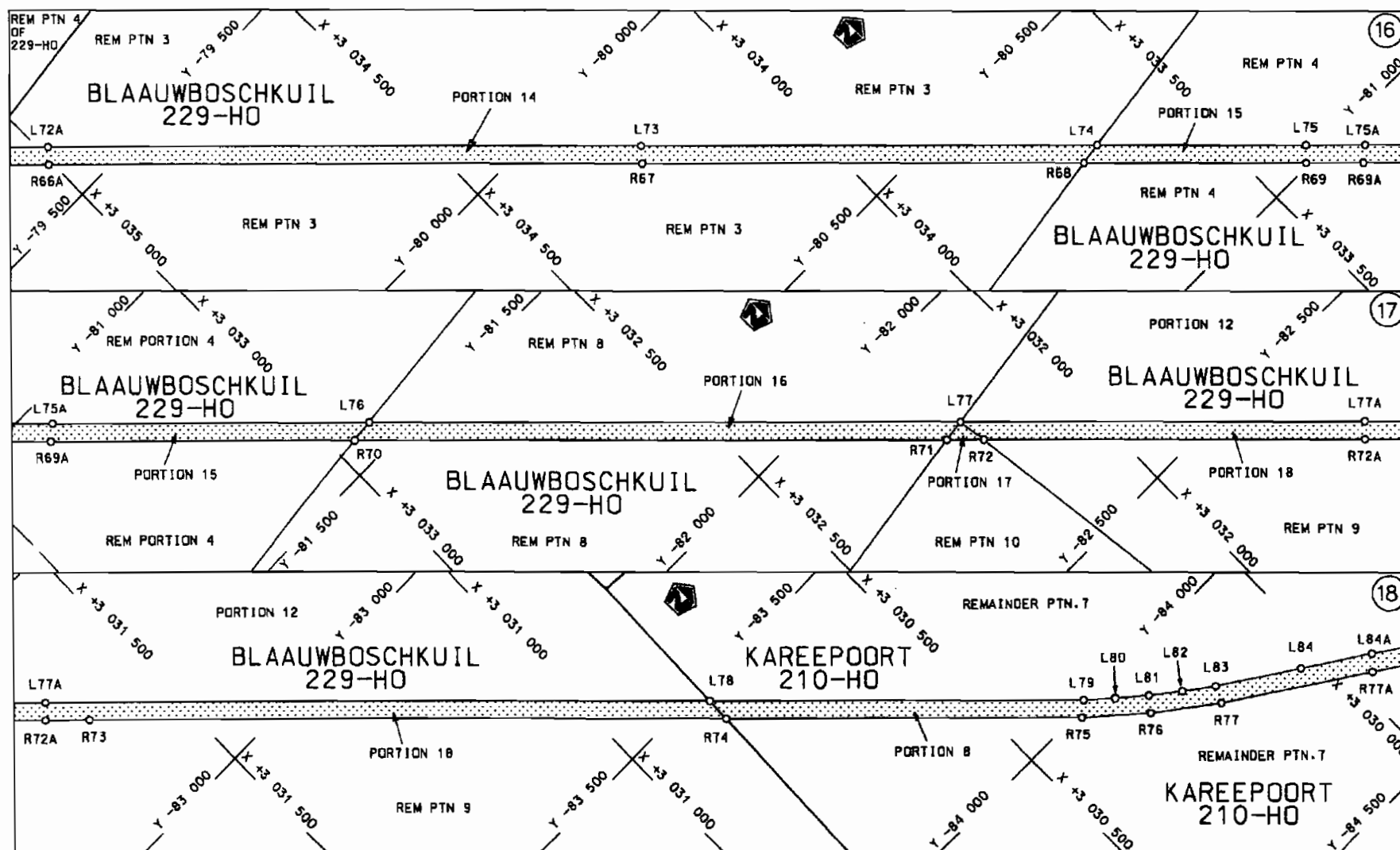
steldie padreserwe voor van 'n gedeelte  
represents the road reserve of a portion  
van Nasionale Roete N12  
of National Route N12

Seksie  
Section 14

Vel  
Sheet 5 van 13  
of

Plan P570/06

D.O.G.A



Die Suid Afrikaanse Nasionale Padagentskap Bepark  
The South African National Roads Agency Limited

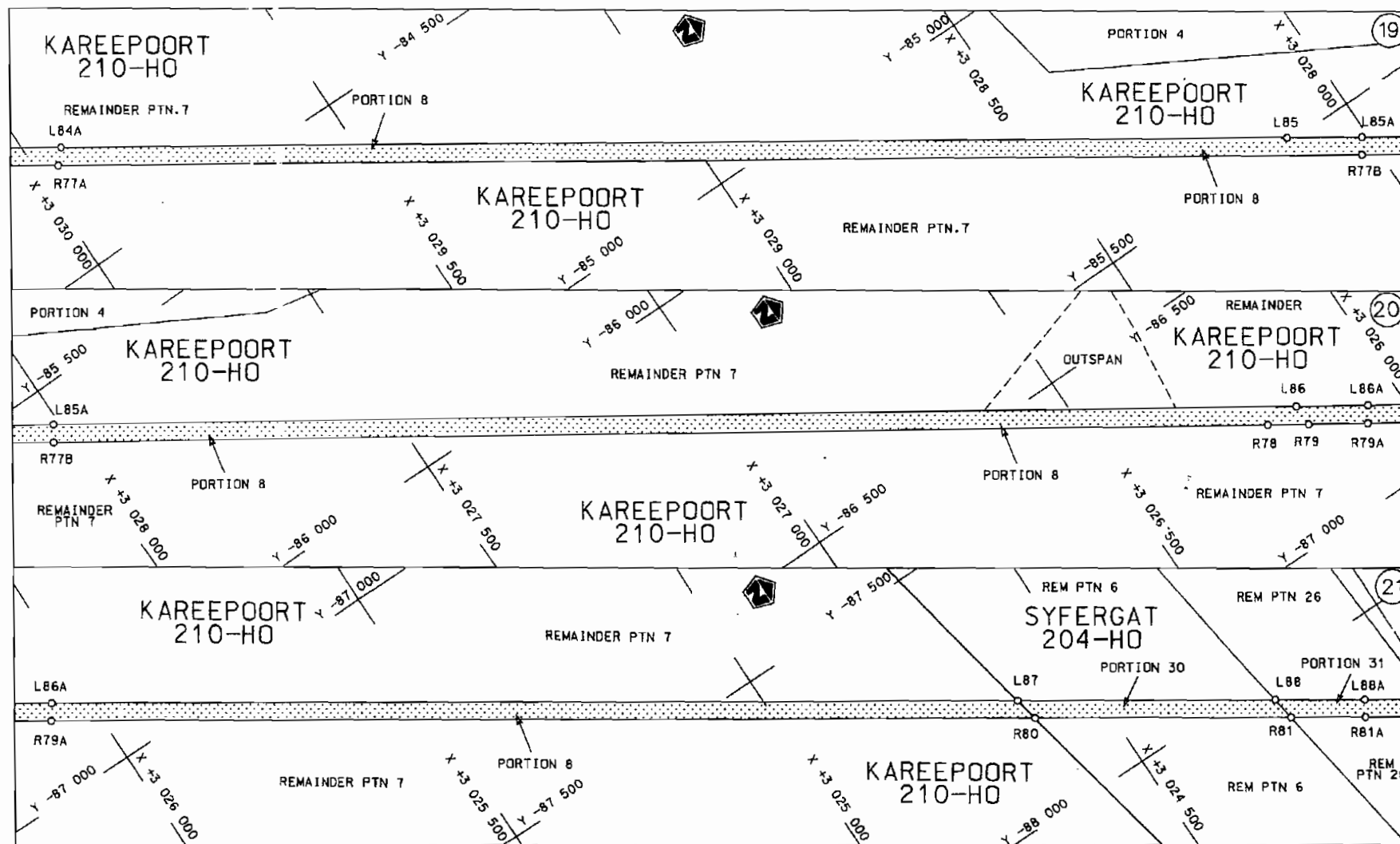
Die figuur getoon  
The figure shown



steeldie padreserwe voor van 'n gedeelte  
represents the road reserve of a portion  
van Nasionale Roete N12 Seksie 14  
of National Route Section

Vel  
Sheet 6 van 13  
Plan P570/06

D.O.9.A



Die Suid Afrikaanse Nasionale Padagentskap Beperk  
The South African National Roads Agency Limited

Die figuur getoon  
The figure shown



stelt die padreserwe voor van 'n gedeelte  
represents the road reserve of a portion  
van Nasionale Roete N12  
of National Route N12

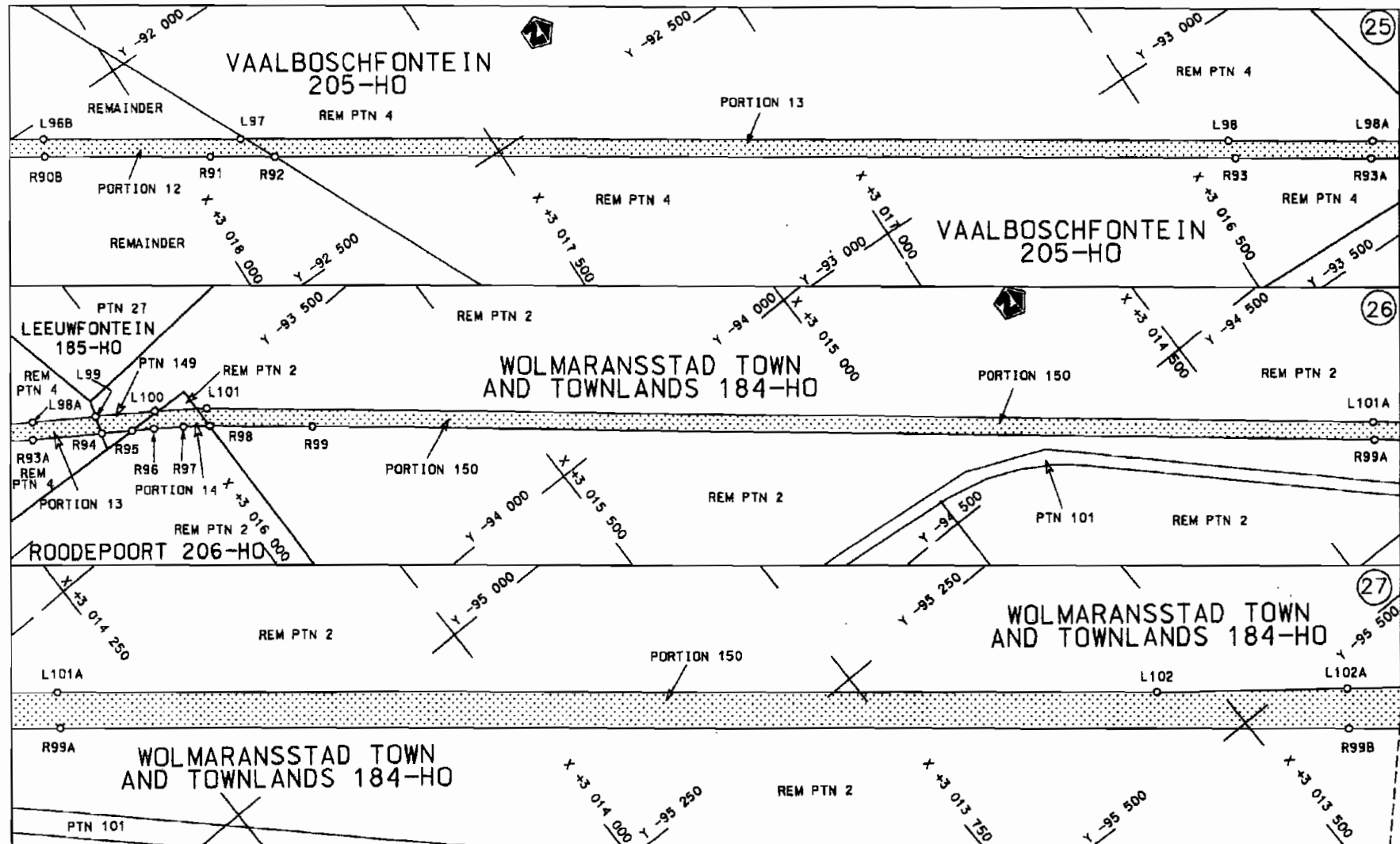
Seksie 14  
Section

Vel  
Sheet 7 van 13  
of

Plan P570/06

D.O.G.A





Die Suid Afrikaanse Nasionale Padagentskap Beperk  
The South African National Roads Agency Limited

Die figuur getoon  
The figure shown



steldie padreserwe voor van 'n gedeelte  
represents the road reserve of a portion  
van Nasionale Roete  
of National Route

N12

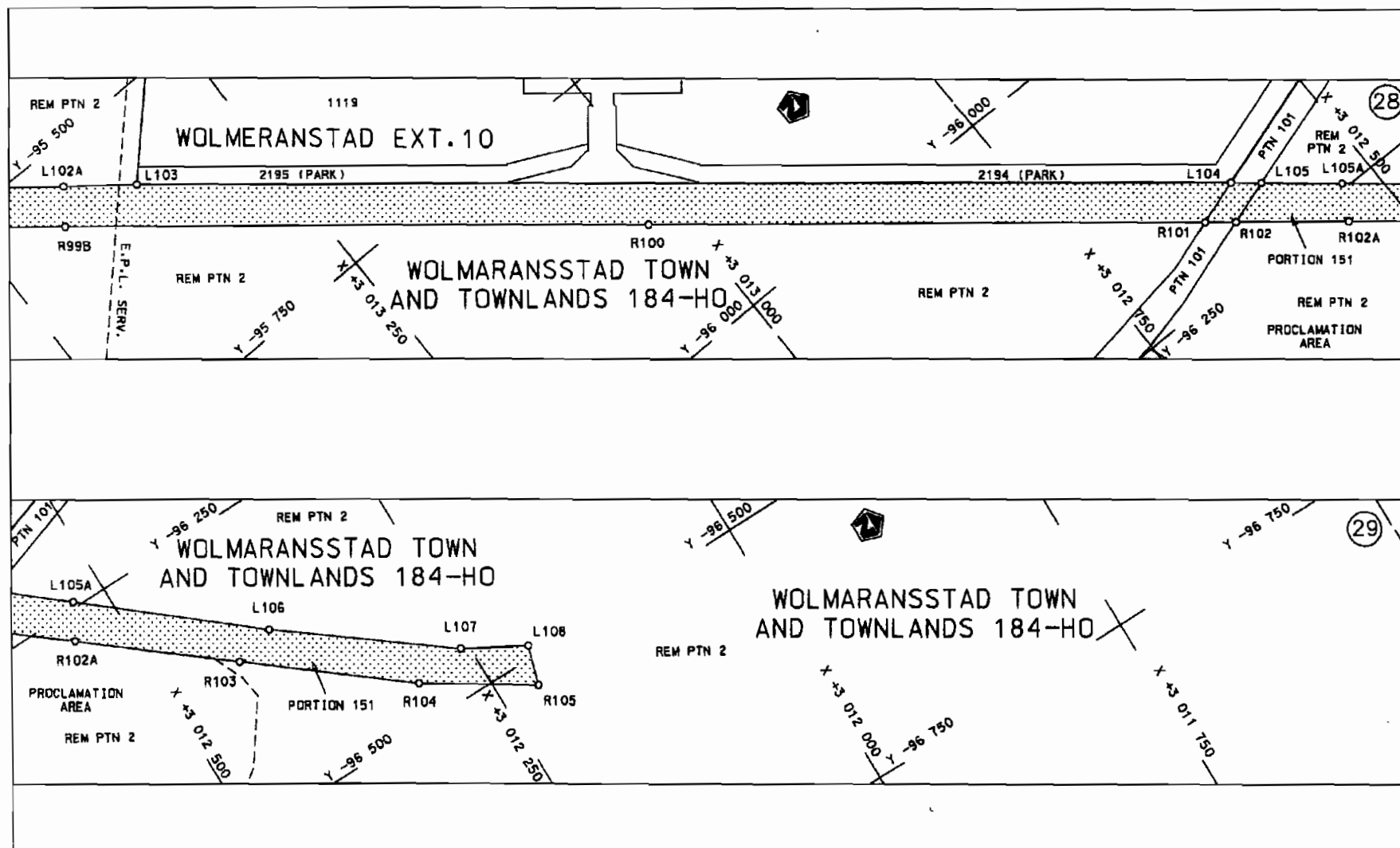
Seksie  
Section

14

Vel  
Sheet 9 van 13

Plan P570/06

D.O.9.A



Die Suid Afrikaanse Nasionale Padagentskap Beperk  
The South African National Roads Agency Limited

Die figuur getoon  
The figure shown



steldie padreserwe voor van 'n gedeelte  
represents the road reserve of a portion  
van Nasionale Roete N12 Sektie  
of National Route Section

14

Vel  
Sheet 10 van 13  
Plan P570/06

D.O.G.A



PADRESERWE KOORDINATE / ROAD RESERVE CO-ORDINATES					
L1NKERKANT/LEFT HAND SIDE			REGTERKANT/RIGHT HAND SIDE		
	y	X	WG25°	y	X
L1	-60 840.698	3 059 642.493	R1	-60870.729	3 059 653.813
L2	-60847.742	3059630.164	R2	-60909.258	3059552.416
L3	-60887.246	3 059 485.892	R3	-60927.282	3 059 396.809
L4	-60889.490	3 059 336.572	R4	-60851.332	3 058 631.469
L5	-60 824.653	3058679.112	R5	-60847.594	3 058 480.020
L6	-60 816.709	3 058 568.421	R6	-60859.236	3 058 328.109
L7	-60 819.330	3058416.767	R7	-60886.347	3 058 178.491
L8	-60 838.193	3058259.928	R8	-60927.941	3 058 031.260
L9	-60 868.926	3058121.321	R9	-61 000.733	3 057 856.327
L10	-60 899.583	3058017.110	R10	-61 076.529	3057720.141
L11	-60 975.618	3 057 836.608	R11	-61 163.078	3 057 595.622
L12	-61 060.300	3057687.604	R12	-61 487.604	3057 164.409
L13	-61 125.438	3 057 593.911	R13	-61 814.938	3056729.337
L14	-61 728.945	3056791.733	R14	-61 851.955	3056685.131
L15	-61 847.270	3056632.788	R15	-62 222.084	3056274.053
L16	-61 857.949	3 056 620.659	R16	-63 102.914	3055295.770
L17	-62181.796	3 056 261.088	R17	-63 606.717	3 054 736.228
L18	-63 066.741	3 055 278.525	R18	-64 995.061	3053 194.171
L19	-63 596.736	3 054 690.065	R19	-65127.197	3053047.406
L20	-64 967.965	3053167.273	R20	-65 243.978	3 052 917.703
L21	-65106.082	3053013.890	R21	-65254.106	3 052 906.455
L22	-65 211.576	3 052 896.968	R22	-65 797.356	3 052 303.097
L23	-65 774.953	3 052 271.653	R23	-66595.553	3051416.582
L24	-66573.554	3 051 384.507	R24	-66945.708	3051027.684
L25	-66926.640	3 050 992.056	R25	-67122.098	3050831.777
L26	-67102.516	3 050 796.894	R26	-67343.323	3050586.074
L27	-67 309.807	3050566.768	R27	-67339.642	3050580.168
L28	-67 516.809	3 050 336.963	R28	-67519.989	3 050 379.644
L29	-67548.244	3 050 303.806	R29	-67628.578	3 050275.840
L30	-67 664.282	3050173.198	R30	-67749.349	3 050 185.805
L31	-67681.783	3 050 193.958	R31	-67879.507	3 050 112.128
L32	-67811.276	3050112.362	R32	-68381.044	3049881.198
L33	-67976.779	3050032.757	R33	-68521.461	3 049 805.356
L34	-68366.980	3 049 853.369	R34	-68 626.003	3 049 718.024
L35	-68504.551	3049774.583	R35	-68 731.876	3 049 601.318
L36	-68556.284	3049737.546	R36	-68 814.991	3049470.786
L37	-68 664.389	3 049 631.872	R37	-68 875.874	3049326.916
L38	-68 719.895	3 049 565.455	R38	-68911.703	3049174.772
L39	-68797.977	3 049 436.497	R39	-68 919.716	3049098.116
L40	-68853.621	3 049 295.888	R40	-68 928.501	3048789.459
L41	-68 885.055	3049140.543	R41	-68 928.157	3048745.301
L42	-68889.103	3 048 988.662	R42	-68 921.322	3 048 472.087
L43	-68883.357	3 048 835.328	R43	-68 920.056	3048405.414
L44	-68883.043	3048791.157	R44	-68923.621	3048258.784
L45	-68886.552	3 048 556.770	R45	-68 955.286	3048091.177
L46	-68888.711	3048406.044	R46	-68 998.799	3047973.566
L47	-68 892.445	3048256.141	R47	-69 092.264	3047812.203
L48	-68919.873	3 048 102.360	R48	-69368.093	3047434.111
L49	-68944.426	3 048 034.891	R49	-70336.832	3046106.209
L50	-68985.750	3047926.608	R50	-70 574.898	3 045 779.838
L51	-69083.835	3047770.697	R51	-71 447.943	3 044 582.958
			Vel Sheet	11 Van of	13 P570/06

PADRESERWE KOORDINATE / ROAD RESERVE CO-ORDINATES					
L1NKERKANT/LEFT HAND SIDE			REGTERKANT/RIGHT HAND SIDE		
	Y	X	WG25	Y	X
L52	- 69336.180	3 047424.827	R52	- 71 829.897	3 044 059.328
L53	-70311.891	3046087.499	R53	- 72 934.114	3042547.986
L54	-70541.403	3 045 772.877	R54	- 73 222.201	3 042 153.681
L55	- 71 412.568	3 044 578.653	R55	- 73 435.429	3041 862.002
L56	-71818.241	3 044 022.543	R56	-73511.747	3041 757.605
L57	- 72 935.503	3 042 493.083	R57	- 73 717.586	3041476.036
L58	-73214.116	3 042 111.680	R58	- 74 251.765	3040745.322
L59	- 73 426.735	3041 820.823	R59	- 74 355.376	3 040 603.591
L60	- 73 484.148	3041742.284	R60	-75677.885	3 038 793.427
L61	- 73 689.981	3041 460.711	R61	- 75 732.044	3 038 726.006
L62	- 74 227.591	3 040725.278	R62	- 75 799.765	3 038 653.513
L63	- 74 329.590	3040585.745	R63	- 78177.628	3036258.981
L64	- 75310.590	3 039 242.947	R64	- 78472.569	3035961.958
L65	-75625.345	3038 813.459	R65	- 79183.315	3035246.192
L66	- 75 661.522	3038764.104	R66	-79324.071	3 035 104.443
L67	-75700.540	3038716.283	R67	-80166.786	3 034 255.776
L68	-75776.456	3 038 632.955	R68	-80717.711	3 033 700.949
L69	-78156.995	3036235.613	R69	-80994.724	3033421.974
L70	-78402.972	3035987.898	R70	-81 450.428	3032963.086
L71	-79138.234	3035247.444	R71	-82190.492	3032217.850
L72	-79319.359	3 035 065.040	R72	-82236.123	3 032 171.900
L73	- 80143.659	3034234.919	R73	-82767.179	3031637133
L74	-80712.464	3 033 662.062	R74	-83566.524	3030832.065
L75	- 80 972.613	3 033 400.059	R75	-84010.540	3030384.520
L76	- 81446.496	3032922.736	R76	- 84 091.550	3030292.160
L77	- 82185.082	3032178.788	R77	- 84 167.070	3 030 190.580
L78	- 83 524.110	3 030 830.601	R78	- 86 774.450	3 026 225.010
L79	-83990.858	3030360.441	R79	- 86 814.060	3026164.447
L80	- 84 028.474	3030318.398	R80	- 87 832.141	3024615.719
L81	-84067.221	3 030 272.390	R81	- 88 081.531	3 024 236.342
L82	-84104.104	3 030 224.905	R82	- 88 230.063	3024010.391
L83	-84 138.881	3030 176.362	R83	- 88 665.649	3023347.767
L84	-84223.300	3 030 048.150	R84	-89110.972	3 022 670.332
L85	- 85490.502	3 028 121.107	R85	- 89 327.855	3022340.406
L86	- 86 776.278	3 026 164.990	R86	- 89 538.611	3022019.773
L87	- 87789.083	3 024 624.304	R87	- 89 576.519	3021 962.102
L88	- 88 039.993	3 024 242.618	R88	- 90 253.803	3020931.716
L89	- 88 190.897	3024013.062	R89	- 90439.729	3 020 648.858
L90	- 88 625.990	3 023 351.195	R90	- 90 627.850	3020362.758
L91	- 89 070.632	3022674.804	R91	- 92 222.463	3 017 937.621
L92	- 89 302.343	3 022 322.323	R92	- 92 286.535	3017840.184
L93	- 89 535.704	3021 967.221	R93	- 93 226.875	3016410.166
L94	- 90 246.934	3 020 885.344	R94	- 93 427.802	3 016 104.424
L95	- 90445.611	3 020 583.103	R95	-93457.524	3016059.200
L96	- 90 590.854	3 020 362.226	R96	- 93 479.329	3016026.021
L97	- 92 226.578	3017 874.715	R97	- 93 509.284	3 015 982.200
L98	- 93 193.831	3016403.583	R98	- 93 537.664	3015943.721
L99	- 93 397.235	3016094.008	R99	-93653.111	3015799.198
L100	- 93 455.281	3016005.663	R100	- 95 887.111	3013027906
L101	- 93 509.606	3 015 928.653	R101	- 96194.796	3012644.537
L102	- 95 429.798	3013544.694	R102	-96211.768	3012623.336
			Vel Sheet	12 Van of	13 P570/06

Vel	13	Van	13	<i>P570106</i>
Sheet		of		