

CONTENTS**INHOUD**

<i>No.</i>	<i>Page No.</i>	<i>Gazette No.</i>	<i>No.</i>	<i>B/adsy No.</i>	<i>Koerant No.</i>
GOVERNMENT NOTICE			GOEWERMENTSKENNISGEWING		
Transport, Department of			Vervoer, Departement van		
<i>Government Notice</i>			<i>Goewermentskennisgewing</i>		
776			776		
South African National Roads Agency Limited and the National Roads Act (7/1996): The South African National Roads Agency Limited: Declaration amendment of National Road R71 Section 2: Amendment of Declaration No. 1229 of 2004			Suid-Afrikaanse Nasionale Padagentskap Beperk en die Nasionale Paaie Wet (7/1996): Die Suid-Afrikaanse Nasionale Padagentskap Beperk: Verklaring wysiging van Nasionale Pad R71 Seksie 2: Wysiging van Verklaring No. 1229 van 2004		
	.	3	30216	.	4 30216

GOVERNMENT NOTICE
GOEWERMENSKENNISGEWING

DEPARTMENT OF TRANSPORT
DEPARTEMENT VAN VERVOER

No. 778

24 August 2007

THE SOUTH AFRICAN NATIONAL ROADS
AGENCY LIMITED


RegistrationNo: 98/09584/06

DECLARATION AMENDMENT OF NATIONAL ROAD R71 SECTION 2

AMENDMENT OF DECLARATION No. 1229 OF 2004

By virtue of section 40 (1)(b) of the South African National Roads Agency Limited and the National Roads Act, 1998 (Act NO.7 of 1998), I hereby amend Declaration No. 1229 of 2004 by substituting the section from Tzaneen up to Gravelotte in paragraphs (V) and (VI) of the Annexure, with the subjoined sheets 1 to 14 of Plan NO.P593f06.

(National Road R71 Section 2: Tzaneen • Gravelotte)



MINISTER OF TRANSPORT

No. 778

24 Augustus 2007

**DIE SUID-AFRIKAANSE NASIONALE
PADAGENTSKAPBEPERK**

Registrasie No: 98109584/06

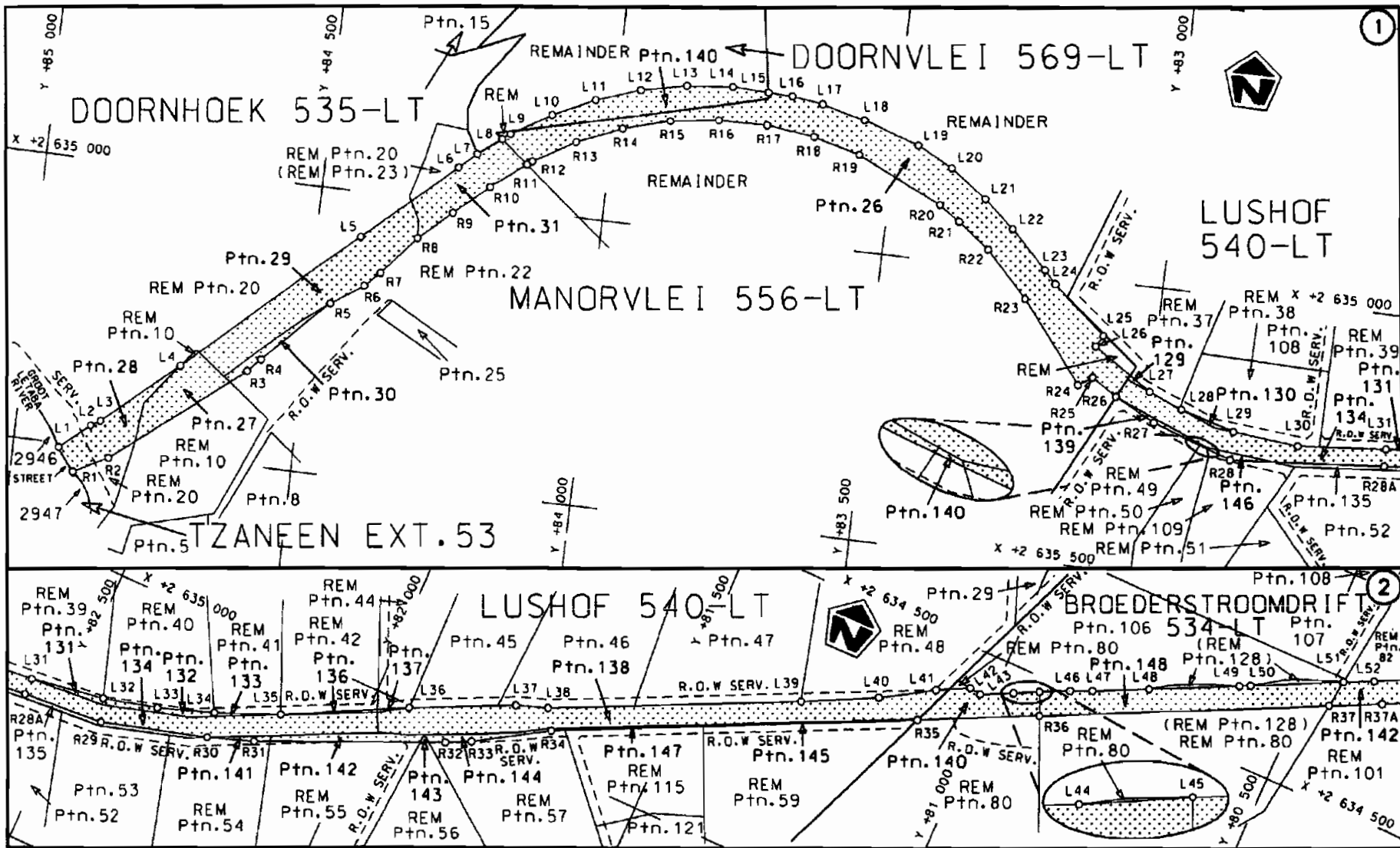
VERKLARING WYSIGING VAN NASIONALE PAD R71 SEKSIE 2.

WYSIGING VAN VERKLARING NO. 1229 VAN 2004.

Kragtens Artikel40(1 lib) van die Suid Afrikaanse Nasionale Padagentskap Beperk en die Nasionale Paaie Wet, 1998 (Wet NO.7 van 1998). wysig ek hiermee Verklaring No.1229 van 2004 deur die gedeelte vanaf Tzaneen tot Gravelott3 in paragrawe (V) en (VI) van die bylae, te vervang met meegaande velle 1 tot 14 van Plan No. P593/06.

(Nasionale Pad R71 Seksie 2: Tzaneen - Gravelotte)


MINISTER VAN VERVOER

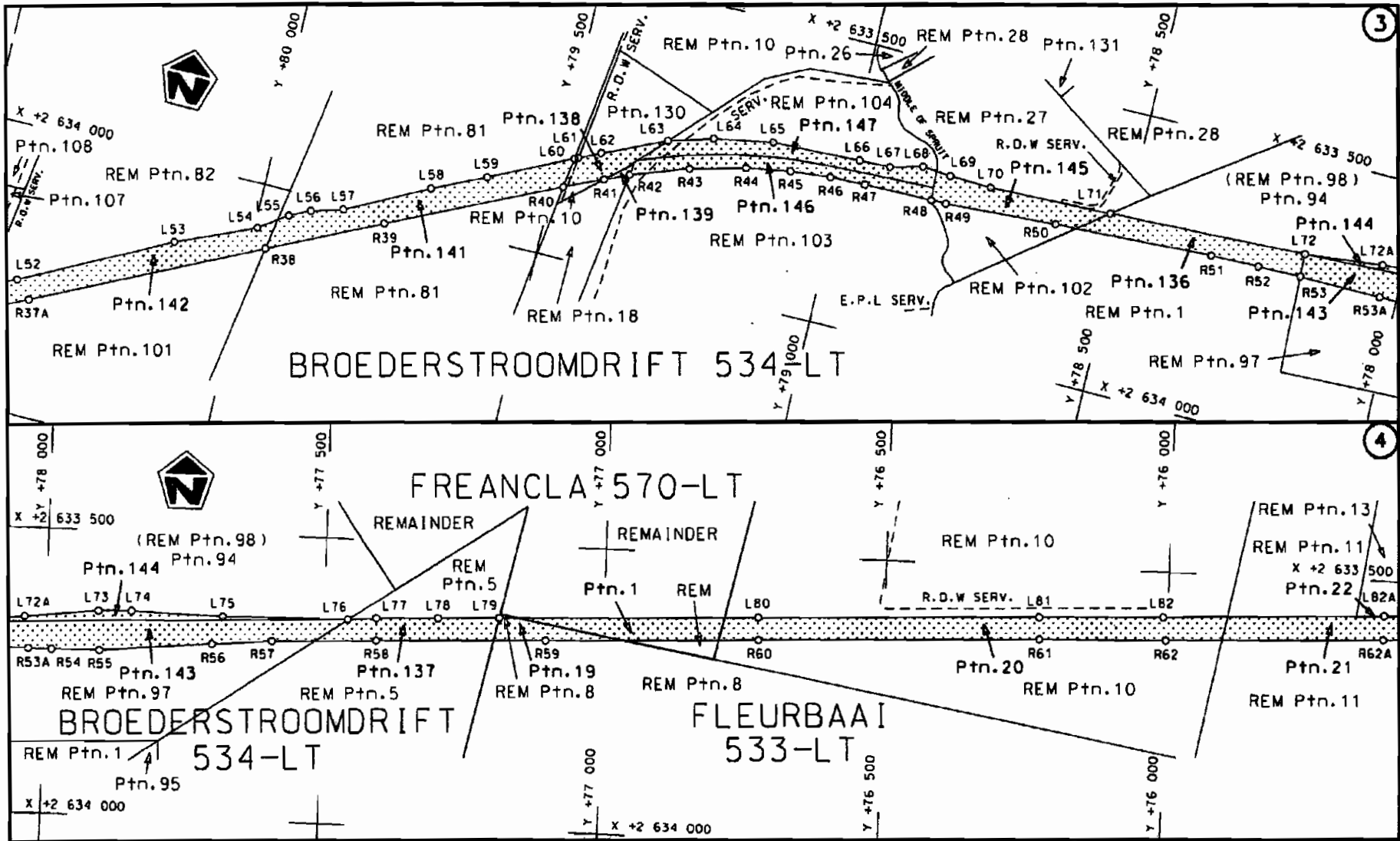


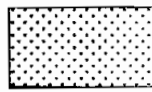
<p>Die Suid Afrikaanse Nasionale Padagentskap Beperk The South African National Roads Agency Limited</p>	<p>Die figuur getoon The figure shown</p>		<p>steldie padreserwe voor van 'n gedeelte represents the road reserve of a portion van Nasionale Roete of National Route R71</p> <p>Seksie Section 2</p>	<p>Vel Sheet 1 van 14</p> <p>Plan P593/06</p>
--	---	--	---	---

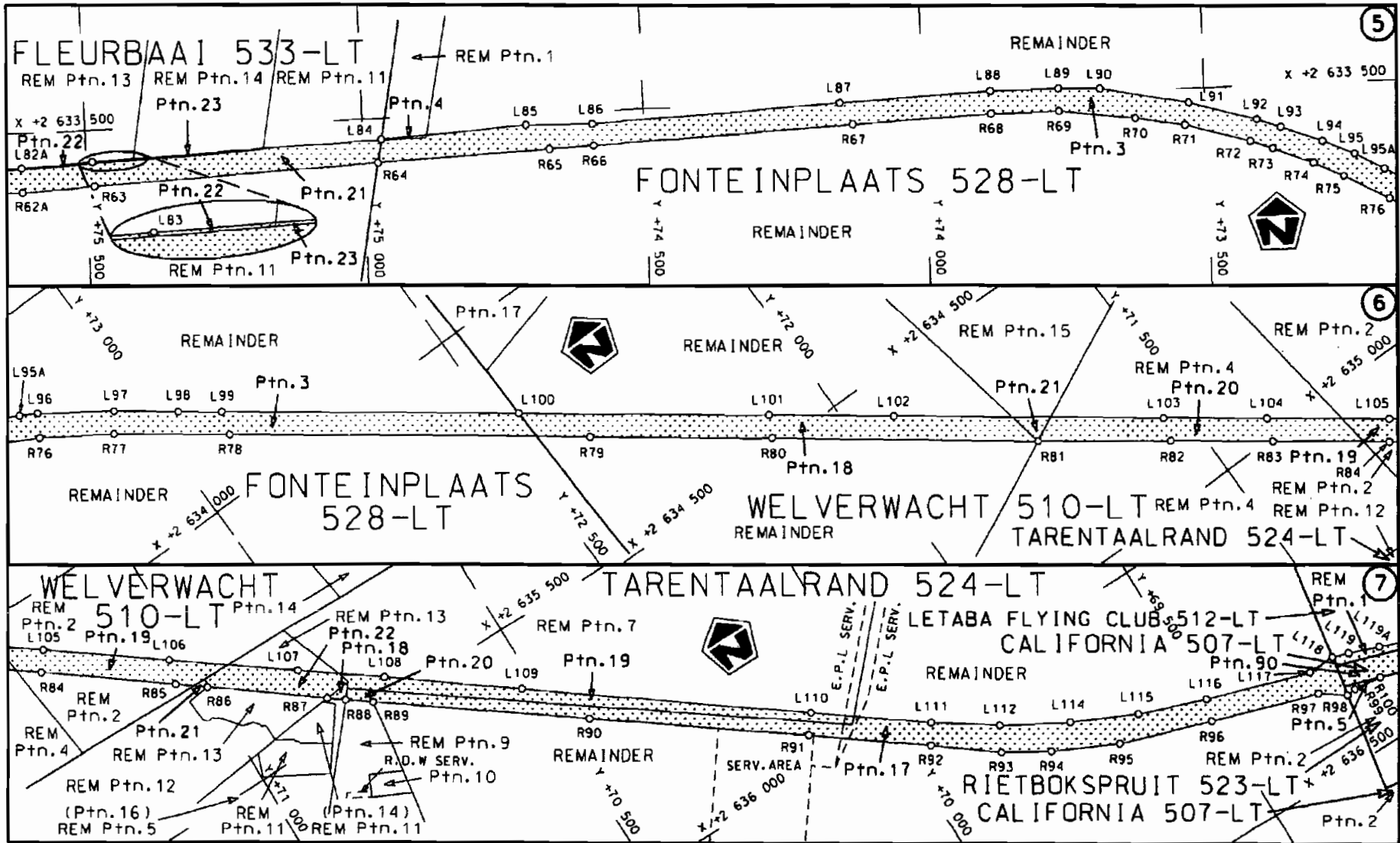
D.O.9.A

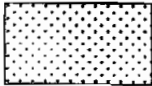
STAATSKOERANT, 24 AUGUST 2007

No. 30218 5



<p>Die Suid Afrikaanse Nasionale Padagentskap Beperk The South African National Roads Agency Limited</p>	<p>Die figuur getoon The figure shown</p> 	<p>steldie padreserwe voor van 'n gedeelte represents the road reserve of a portion van Nasionale Roete R71 Seksie Section of National Route 2</p>	<p>Vol Sheet 2 van of 14 Plan P593/06</p>
--	--	--	---

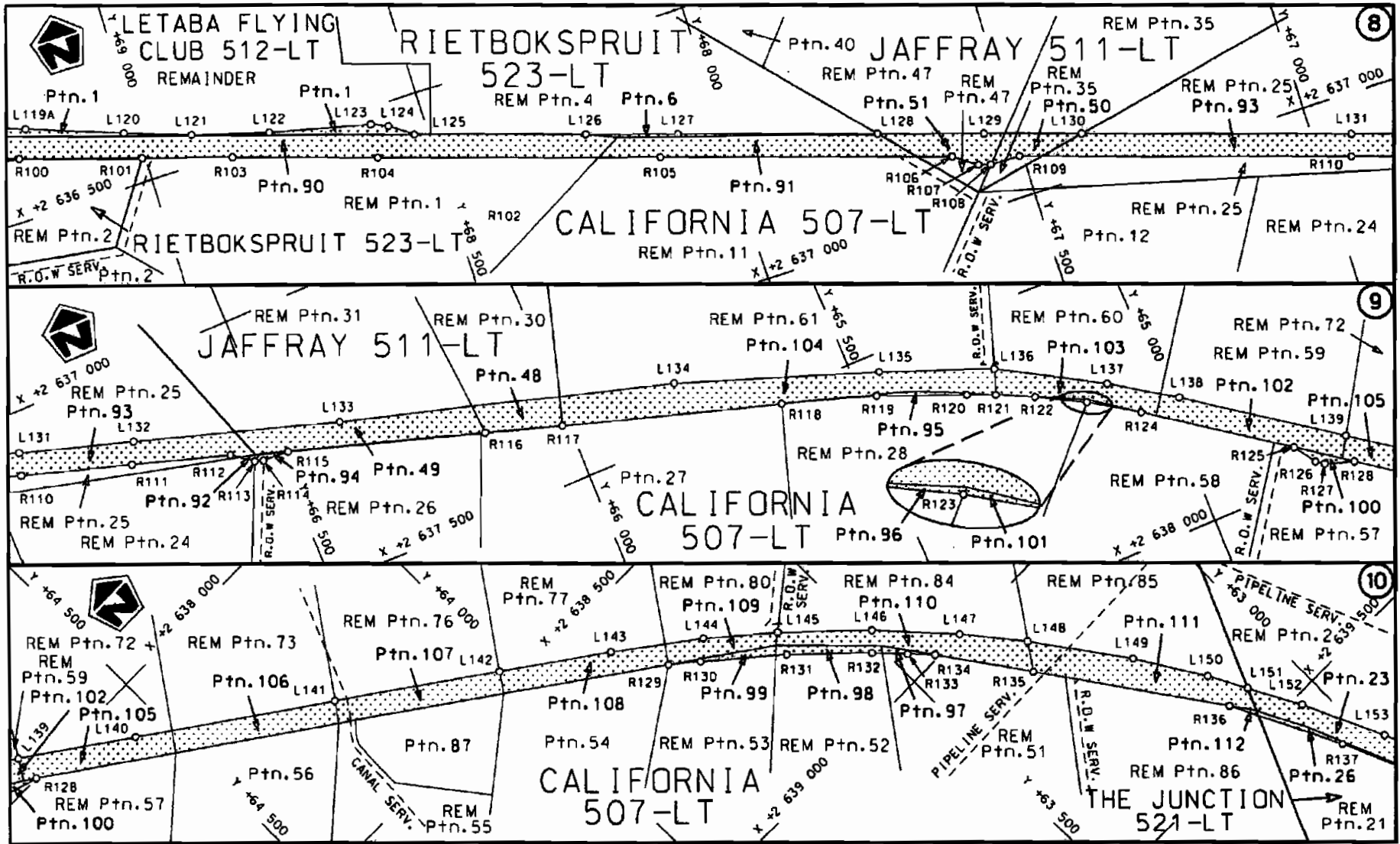


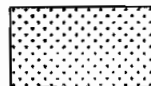
Die Suid Afrikaanse Nasionale Padogentskap Beperk The South African National Roads Agency Limited	Die figuur getoon The figure shown	 steldie padreserwe voor van 'n gedeelte represents the road reserve of a portion van Nasionale Roete R71 of National Route R71	Vel Sheet 3 van 14 of 14
R71 Seksie 2			Plan P593/06

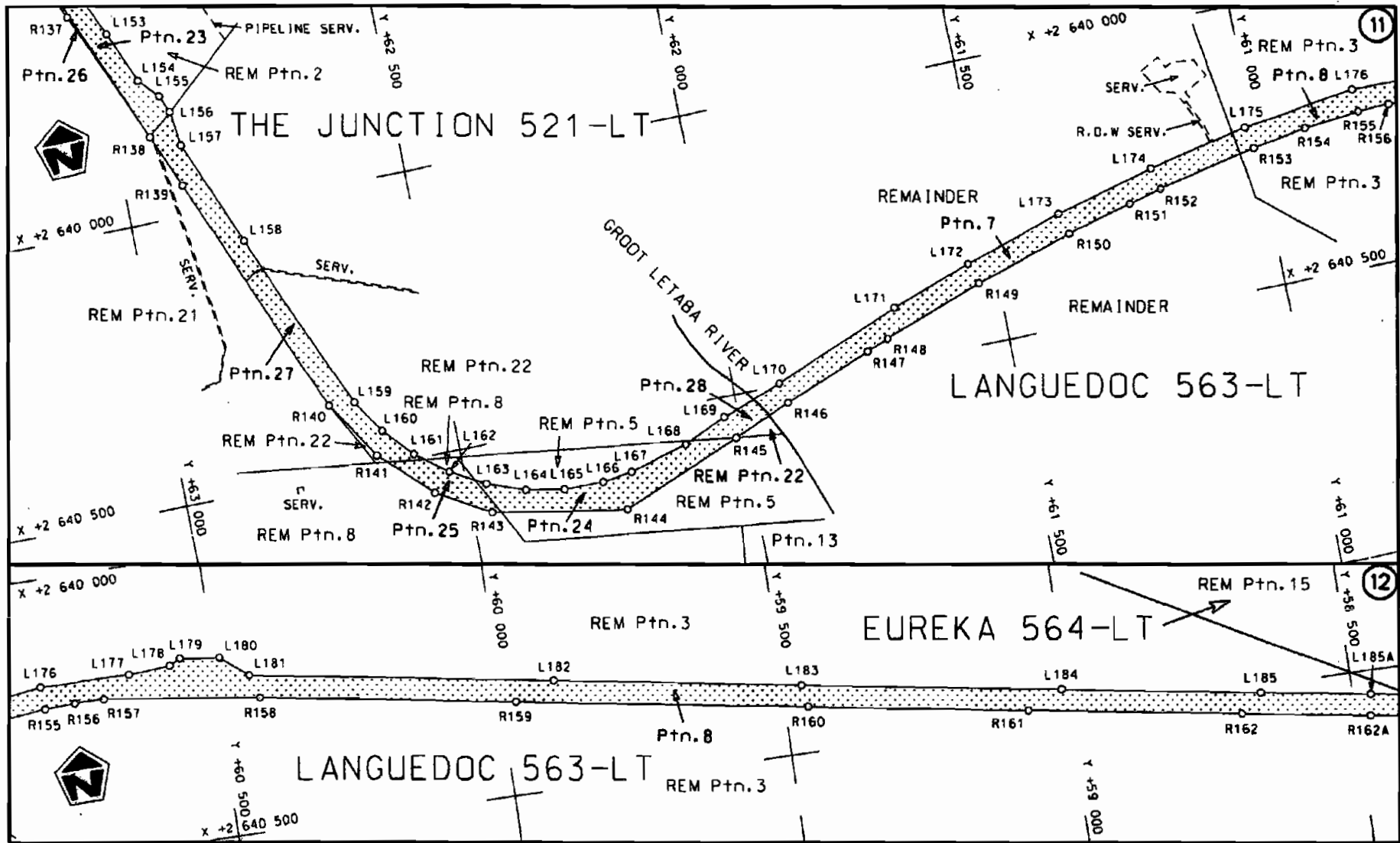
D.O.9.A

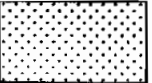
STAATSKOERANT, 24 AUGUST 2007

No. 30218 7



<p>Die Suid Afrikaanse Nasionale Padagentskap Beperk The South African National Roads Agency Limited</p>	<p>Die figuur getoon The figure shown</p> 	<p>steldie padreserwe voor van 'n gedeelte represents the road reserve of a portion van Nasionale Roete R71 of National Route</p> <p>Seksie 2</p>	<p>Vel Sheet 4 van of 14 Plan P593/06</p>
--	--	---	---

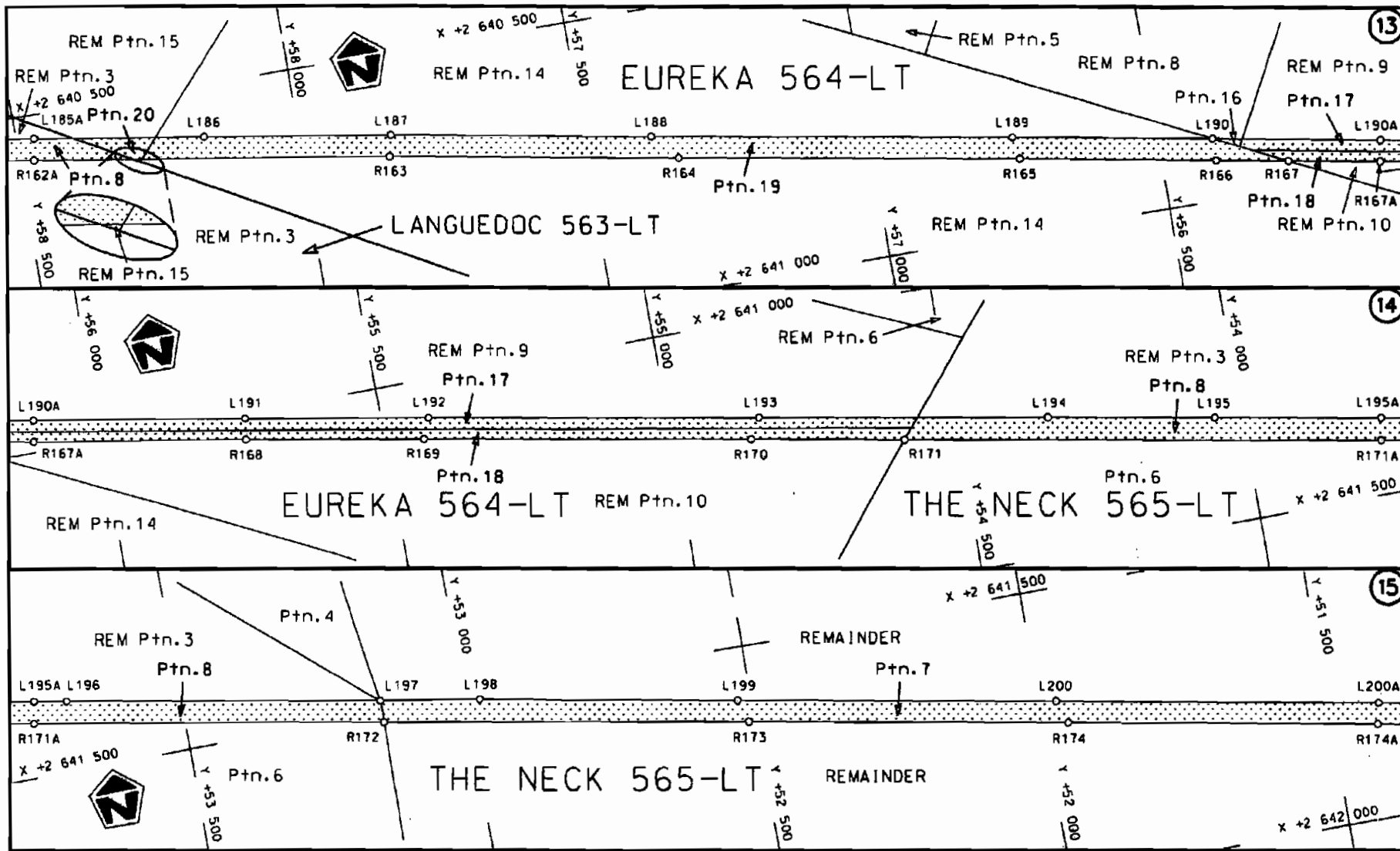


<p>Die Suid Afrikaanse Nasionale Padagentskap Beperk The South African National Roads Agency Limited</p>	<p>Die figuur getoon The figure shown</p>		<p>steldie padreserwe voor van 'n gedeelte represents the road reserve of a portion van Nasionale Roete of National Route</p> <p>R71 Seksie 2</p>	<p>Vel Sheet 5 van 14</p> <p>Plan P593/06</p>
--	---	--	---	---

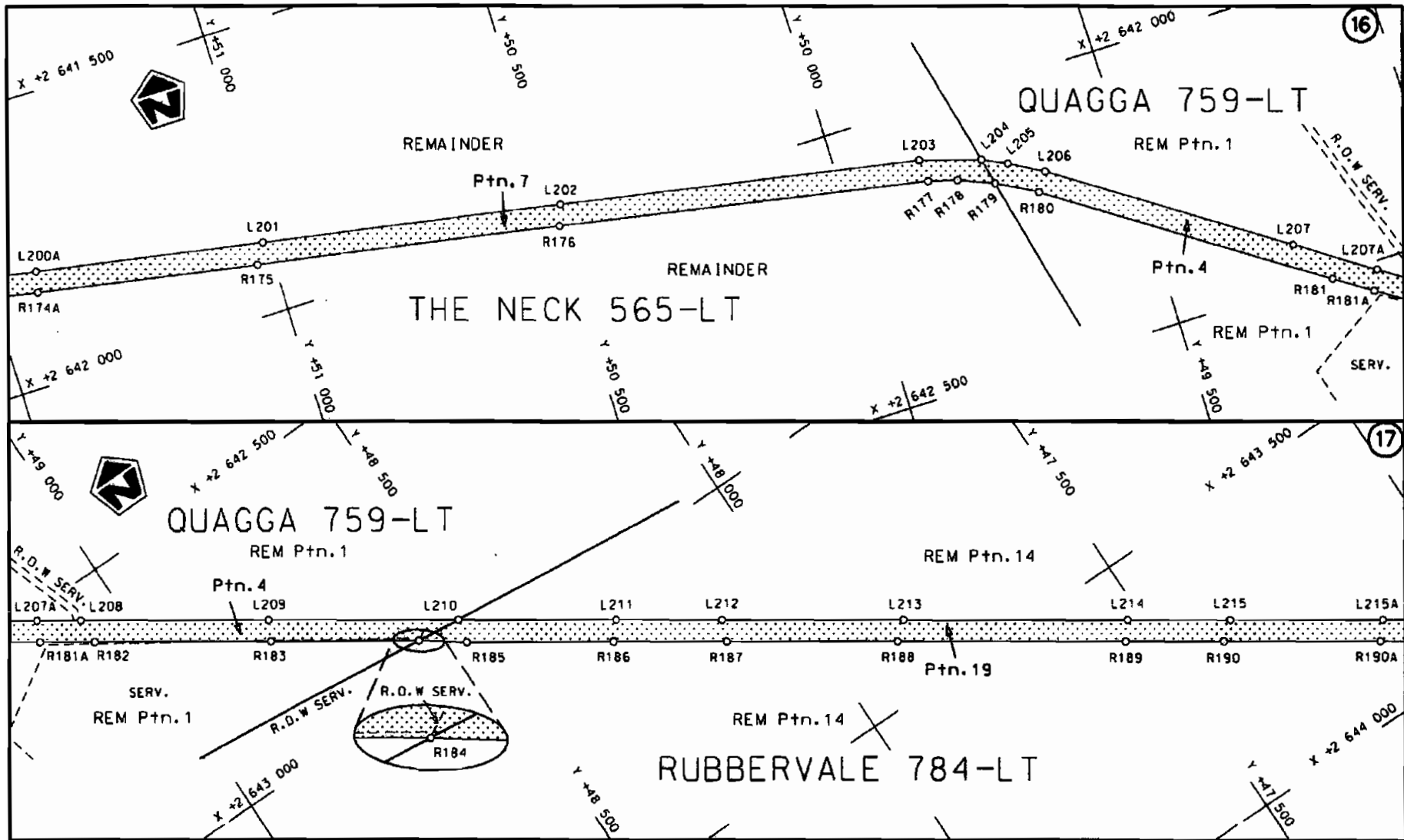
D.O.9.A

STAATSKOERANT, 24 AUGUST 2007

No. 30218 9

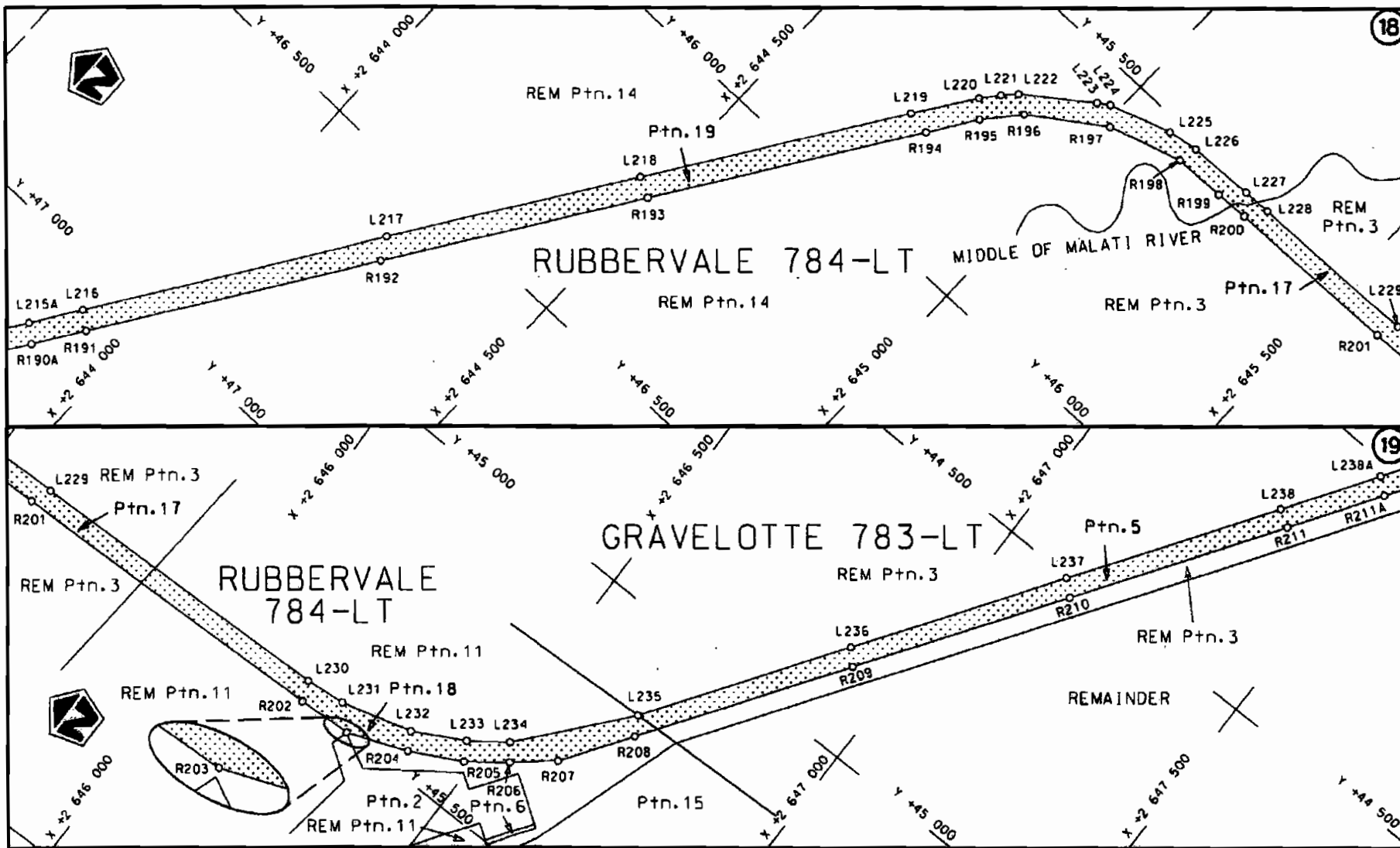



<p>Die Suid Afrikaanse Nasionale Padagentskap Beperk The South African National Roads Agency Limited</p>	<p>Die figuur getoon The figure shown</p>	<p>stel die padreserwe voor van 'n gedeelte represents the road reserve of a portion van Nasionale Roete R71 Seksie of National Route R71 Section</p>	<p>Vel Sheet 6 van of 14 Plan P593/06</p>
<p>2</p>			<p>2</p>

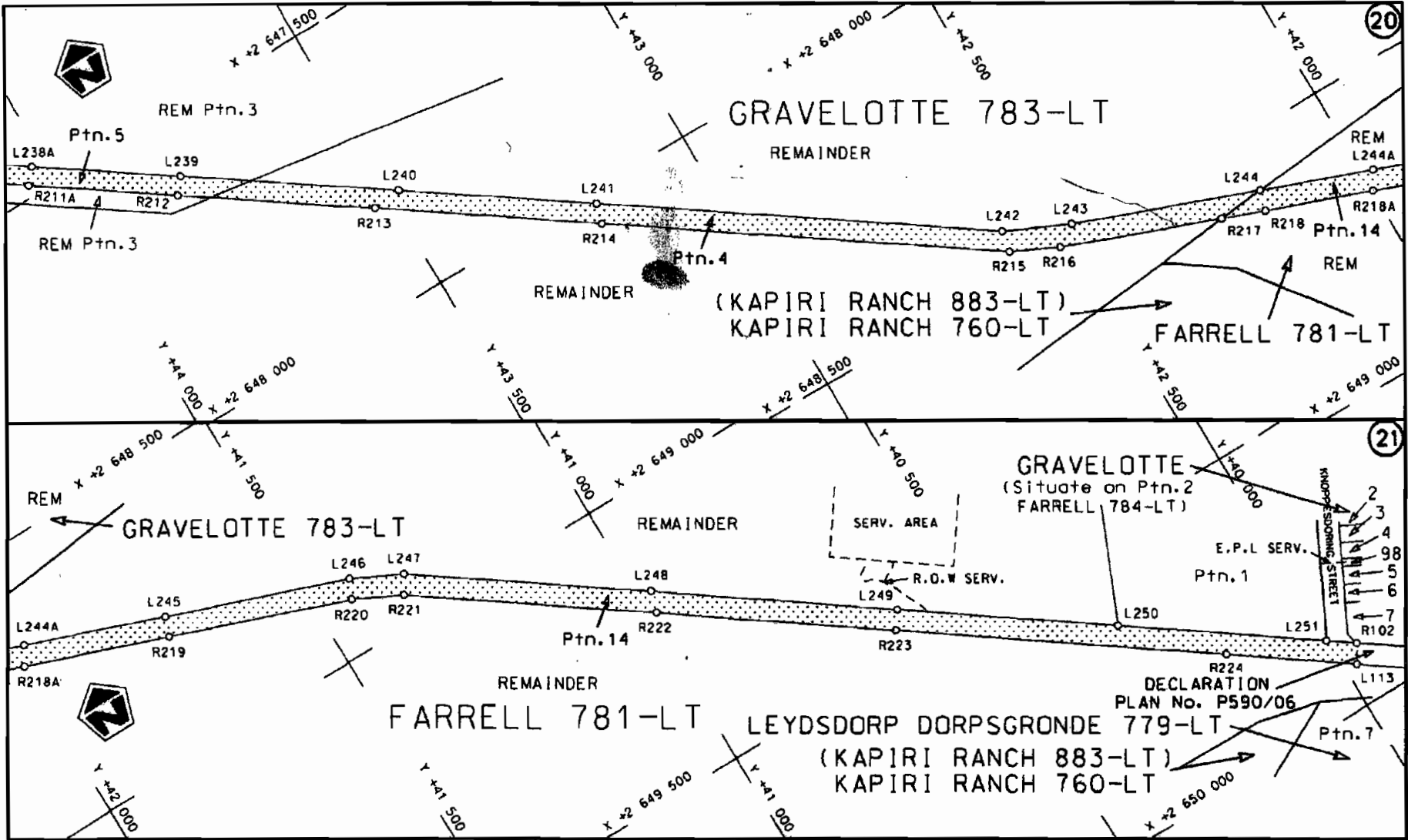


Die Suid Afrikaanse Nasionale Padagentskap Beperk	Die figuur getoon	steidie padreserwe voor van 'n gedeelte	Vel Sheet 7 van 14
The South African National Roads Agency Limited	The figure shown	represents the road reserve of a portion van Nasionale Rote R71 Sektie Section 2 of National Route	Plan P593/06

D.O.9.A



<p>Die Suid Afrikaanse Nasionale Padagentskop Beperk The South African National Roads Agency Limited</p>	<p>Die figuur getoon The figure shown</p>		<p>steldie padreserwe voor van 'n gedeelte represents the road reserve of a portion van Nasionale Roete R71 Seksie of National Route R71 Section 2</p>	<p>Vel Sheet 8 van of 14 Plan P593/06</p>
--	---	--	--	---



Die Suid Afrikaanse Nasionale Padagentskap Beperk The South African National Roads Agency Limited	Die figuur getoon The figure shown		steldie padreserwe voor van 'n gedeelte represents the road reserve of a portion van Nasionale Roete R71 Seksie of National Route Section 2	Vel Sheet 9 van of 14 Plan P593/06
--	---------------------------------------	--	--	---------------------------------------

D.O.9.A

PADRESERWE KOORDINATE				ROAD RESERVE CO-ORDINATES			
LINKERKANT/LEFT HAND SIDE				REGTERKANT/RIGHT HAND SIDE			
	Y	X	WG 31°		Y	X	
L1	+84 919,01	+2 635 507,47	R1	+84 888,65	+2 635 546,85		
L2	+84 865,78	+2 635 464,02	R2	+84 827,06	+2 635 515,82		
L3	+84 848,74	+2 635 453,97	R3	+84 597,82	+2 635 337,58		
L4	+B4 717,81	+2 635 342,77	R4	+84 575,12	+2 635 314,92		
L5	+84 422,81	+2 635 079,86	R5	+B4 462,55	+2 635 202,80		
L6	+84 264,07	+2 634 93B,27	R6	+84 406/52	+2 635 164,78		
L7	+84 233/71	+2 634 910,77	R7	+B4 380/83	+2 635 138,90		
L8	+B4 193/35	+2 634 879/69	R8	+84 321,93	+2 635 070,41		
L9	+84 179/86	+2 634 869/39	R9	+84 264,54	+2 635 018/88		
L10	+84 110/41	+2 634 826,10	R10	+84 204/38	+2 634 965/30		
L11	+84 036/31	+2 634 790/97	R11	+84 144/33	+2 634 918/52		
L12	+83 958,85	+2 634 764/40	R12	+84 135,97	+2 634 912/03		
L13	+83 878/69	+2 634 746/B2	R13	+84 061,88	+2 634 868/47		
L14	+83 797,30	+2 634 738/49	R14	+83 982,83	+2 634 834/75		
L15	+B3 732,99	+2 634 740/92	R15	+83 900,46	+2 634 811/33		
L16	+83 689/99	+2 634 742/55	R16	+83 815/33	+2 634 799/50		
L17	+83 634/04	+2 634 749/61	R17	+B3 72B/85	+2 634 798/28		
L18	+83 557/34	+2 634 768,76	R18	+B3 642/98	+2 634 B08/58		
L19	+83 457/95	+2 634 801/29	R19	+83 559/88	+2 634 830/02		
L20	+83 394/81	+2 634 833/83	R20	+83 408/36	+2 634 900/77		
L21	+83 329,59	+2 634 881/08	R21	+83 371/07	+2 634 926/36		
L22	+83 276/05	+2 634 927/30	R22	+83 314/50	+2 634 969/26		
L23	+83 210/69	+2 634 993/08	R23	+83 239/69	+2 635 047,97		
L24	+83 189/40	+2 635 015,49	R24	+83 129,71	+2 635 185/43		
L25	+83 094/87	+2 635 095/61	R25	+83 105/56	+2 635 169/48		
L26	+83 106/52	+2 635 115/76	R26	+83 060/26	+2 635 197/72		
L27	+83 002,50	+2 635 182,13	R27	+82 989,07	+2 635 234/48		
L28	+82 943,17	+2 635 205/80	R28	+82 847,36	+2 635 282/44		
L29	+82 847/12	+2 635 233/33	R29	+82 431,32	+2 635 249/68		
L30	+82 732,31	+2 635 244/39	R30	+82 247/09	+2 635 197/81		
L31	+82 575/99	+2 635 232/08	R31	+82 166/33	+2 635 169/99		
L32	+82 443/82	+2 635 210/65	R32	+81 853/69	+2 635 033,14		
L33	+B2 348/74	+2 635 1B6/56	R33	+B1 B11/3B	+2 635 012,42		
L34	+82 252,32	+2 635 153/32	R34	+B1 690,22	+2 634 937,57		
L35	+82 141/17	+2 635 107,81	R35	+81 103,88	+2 634 656/41		
L36	+81 935,98	+2 635 004/10	R36	+80 910,26	+2 634 562/62		
L37	+81 765/33	+2 634 923,09	R37	+80 450,35	+2 634 339,83		
L38	+81 711,65	+2 634 903,87	R38	+79 972,38	+2 634 109/71		
L39	+81 304,98	+2 634 710,79	R39	+79 774/92	+2 634 015,69		
L40	+81 181,50	+2 634 648,43	R40	+79 480,80	+2 633 875,14		
L41	+81 094,60	+2 634 595/58	R41	+79 413/61	+2 633 844,58		
L42	+81 041,16	+2 634 568,39	R42	+79 371/35	+2 633 825/40		
L43	+81 021,18	+2 634 570,75	R43	+79 270/37	+2 633 789/17		
L44	+80 968,1.4	+2 634 545,59	R44	+79 173,67	+2 633 763,74		
L45	+80 926/86	+2 634 523,99	R45	+79 095/05	+2 633 750,39		
L46	+80 878/04	+2 634 501,16	R46	+79 023/43	+2 633 743,53		
L47	+80 842/13	+2 634 485,08	R47	+78 960,92	+2 633 740,97		
L48	+80 752/05	+2 634 441,74	R48	+78 840,09	+2 633 739/54		
L49	+80 608,07	+2 634 372/32	R49	+78 813,77	+2 633 739/21		
L50	+80 590/09	+2 634 363,91	R50	+78 616,84	+2 633 727/60		
LSI	+80 443/52	+2 634 292,14	R51	+78 336,47	+2 633 713/74		

Vel	10	Van	14	P593/06
Sheet		of		

PADRESERWE KOORDINATE					ROAD RESERVE CO-ORDINATES						
LINKERKANT/LEFT HAND SIDE					1	REGTERKANT/RIGHT HAND SIDE					
	y		X	WG		31°	Y		X		
L52	+80	393,31	+2	634	269,05	R52	+78	251,12	+2	633	712,43
L53	+80	133,84	+2	634	137,23	R53	+78	175,37	+2	633	712,03
L54	+79	995,00	+2	634	077,51	R54	+77	988,94	+2	633	712,80
L55	+79	945,40	+2	634	043,20	R55	+77	902,70	+2	633	712,37
L56	+79	908,84	+2	634	025,46	R56	+77	700,84	+2	633	694,28
L57	+79	850,88	+2	634	008,68	R57	+77	592,70	+2	633	685,39
L58	+79	708,78	+2	633	935,36	R58	+77	404,88	+2	633	677,38
L59	+79	616,78	+2	633	891,85	R59	+77	103,40	+2	633	665,32
L60	+79	473,53	+2	633	822,02	R60	+76	724,54	+2	633	649,21
L61	+79	466,82	+2	633	818,75	R61	+76	225,35	+2	633	627,88
L62	+79	429,52	+2	633	800,52	R62	+76	001,87	+2	633	620,30
L63	+79	319,45	+2	633	750,82	R63	+75	485,91	+2	633	597,94
L64	+79	241,03	+2	633	727,23	R64	+74	974,60	+2	633	576,73
L65	+79	137,06	+2	633	708,32	R65	+74	668,06	+2	633	563,81
L66	+78	979,86	+2	633	701,86	R66	+74	588,88	+2	633	560,43
L67	+78	924,76	+2	633	699,90	R67	+74	126,54	+2	633	541,29
L68	+78	868,38	+2	633	684,82	R68	+73	880,97	+2	633	531,08
L69	+78	817,99	+2	633	689,58	R69	+73	760,09	+2	633	531,64
L70	+78	743,99	+2	633	692,58	R70	+73	624,49	+2	633	548,49
L71	+78	527,74	+2	633	685,07	R71	+73	537,03	+2	633	564,12
L72	+78	177,03	+2	633	671,00	R72	+73	421,83	+2	633	596,58
L73	+77	906,53	+2	633	642,90	R73	+73	383,04	+2	633	610,33
L74	+77	847,00	+2	633	641,02	R74	+73	312,24	+2	633	638,86
L75	+77	682,84	+2	633	644,90	R75	+73	259,64	+2	633	664,57
L76	+77	455,99	+2	633	642,01	R76	+73	180,33	+2	633	706,51
L77	+77	405,80	+2	633	637,77	R77	+73	068,70	+2	633	780,04
L78	+77	296,14	+2	633	633,67	R78	+72	900,71	+2	633	904,06
L79	+77	186,94	+2	633	628,75	R79	+72	381,61	+2	634	286,84
L80	+76	726,19	+2	633	609,53	R80	+72	121,38	+2	634	478,87
L81	+76	227,16	+2	633	588,67	R81	+71	742,73	+2	634	761,29
L82	+76	007,74	+2	633	579,67	R82	+71	551,38	+2	634	899,59
L83	+75	487,94	+2	633	555,15	R83	+71	405,70	+2	635	006,33
L84	+74	967,03	+2	633	536,45	R84	+71	240,23	+2	635	128,45
L85	+74	708,85	+2	633	520,67	R85	+71	046,37	+2	635	273,28
L86	+74	590,05	+2	633	522,57	R86	+71	000,14	+2	635	308,25
L87	+74	148,30	+2	633	502,45	R87	+70	826,13	+2	635	439,49
L88	+73	880,70	+2	633	491,48	R88	+70	800,07	+2	635	459,15
L89	+73	759,14	+2	633	492,19	R89	+70	760,86	+2	635	488,74
L90	+73	685,10	+2	633	494,56	R90	+70	448,08	+2	635	715,92
L91	+73	528,72	+2	633	524,93	R91	+70	131,45	+2	635	946,16
L92	+73	409,09	+2	633	558,60	R92	+69	955,94	+2	636	075,72
L93	+73	367,29	+2	633	573,50	R93	+69	856,57	+2	636	150,98
L94	+73	294,80	+2	633	601,84	R94	+69	780,27	+2	636	196,47
L95	+73	238,62	+2	633	626,05	R95	+69	669,66	+2	636	248,69
L96	+73	158,31	+2	633	669,68	R96	+69	510,38	+2	636	302,01
L97	+73	045,17	+2	633	747,90	R97	+69	324,41	+2	636	360,15
L98	+72	952,70	+2	633	816,14	R98	+69	282,32	+2	636	389,88
L99	+72	889,09	+2	633	862,95	R99	+69	265,80	+2	636	387,40
L100	+72	461,24	+2	634	178,82	R100	+69	216,75	+2	636	393,02
L101	+72	102,48	+2	634	443,05	R101	+69	005,42	+2	636	458,87
L102	+71	923,37	+2	634	575,24	R103	+68	849,89	+2	636	506,87

Vel	11	Van	14	P593/06
Sheet		of		

PADRESERWE KOORDINATE				ROAD RESERVE CO-ORDINATES			
LINKERKANT/LEFT HAND SIDE				REGTERKANT/RIGHT HAND SIDE			
	Y	X	WG	31°	y	X	
L103	+71	537,86	+2	634	859,54	RI04	+68 598,27 +2 636 587,78
LI04	+71	389,99	+2	634	968,39	RI05	+68 117,19 +2 636 738,60
LI05	+71	216,51	+2	635	096,33	RI06	+67 620,39 +2 636 894,42
LI06	+71	033,80	+2	635	231,29	RI07	+67 580,83 +2 636 922,44
LI07	+70	844,47	+2	635	370,93	RI08	+67 559,27 +2 636 928,59
LI08	+70	720,92	+2	635	461,98	RI09	+67 506,17 +2 636 929,58
LI09	+70	523,02	+2	635	608,23	R110	+66 943,18 +2 637 106,70
LI10	+70	107,23	+2	635	914,70	R111	+66 752,44 +2 637 166,35
LI11	+69	934,69	+2	636	042,11	R112	+66 582,64 +2 637 219,60
L112	+69	834,56	+2	636	109,62	RI13	+66 545,87 +2 637 246,72
L114	+69	724,93	+2	636	171,56	R114	+66 531,02 +2 637 251,35
L115	+69	614,01	+2	636	222,34	R115	+66 483,51 +2 637 254,75
L116	+69	497,52	+2	636	264,24	RI16	+66 143,96 +2 637 360,79
LI17	+69	317,33	+2	636	320,61	RI17	+66 011,36 +2 637 401,89
L118	+69	270,35	+2	636	218,87	RI18	+65 634,91 +2 637 516,87
L119	+69	242,07	+2	636	328,15	RI19	+65 472,68 +2 637 568,86
L120	+69	023,75	+2	636	408,15	R120	+65 323,81 +2 637 628,82
L121	+68	908,59	+2	636	447,86	R121	+65 276,11 +2 637 648,90
L122	+68	773,14	+2	636	486,85	R122	+65 213,23 +2 637 678,95
L123	+68	591,93	+2	636	529,12	R123	+65 131,55 +2 637 722,59
L124	+68	563,57	+2	636	541,01	R124	+65 049,28 +2 637 775,37
L125	+68	523,97	+2	636	569,73	R125	+64 821,22 +2 637 936,64
L126	+68	231,36	+2	636	661,11	R126	+64 795,85 +2 637 973,85
L127	+68	075,28	+2	636	709,87	R127	+64 781,92 +2 637 983,49
L128	+67	734,45	+2	636	816,78	R128	+64 731,24 +2 638 000,24
L129	+67	554,40	+2	636	872,96	R129	+63 788,94 +2 638 666,49
L130	+67	388,73	+2	636	925,09	R130	+63 744,75 +2 638 703,56
L131	+66	931,27	+2	637	069,05	R131	+63 627,24 +2 638 804,44
L132	+66	734,32	+2	637	130,37	R132	+63 517,68 +2 638 910,59
L133	+66	377,14	+2	637	242,62	R133	+63 473,58 +2 638 956,95
L134	+65	798,51	+2	637	409,86	R134	+63 440,61 +2 638 992,87
L135	+65	452,35	+2	637	532,12	R135	+63 338,75 +2 639 137,24
L136	+65	261,20	+2	637	605,62	R136	+63 133,91 +2 639 427,35
L137	+65	085,52	+2	637	706,56	R137	+63 039,50 +2 639 616,33
L138	+64	976,25	+2	637	777,78	R138	+62 936,16 +2 639 852,58
L139	+64	728,29	+2	637	952,97	R139	+62 896,08 +2 639 945,98
L140	+64	554,12	+2	638	077,13	R140	+62 712,20 +2 640 379,17
L141	+64	255,34	+2	638	288,16	R141	+62 646,20 +2 640 481,77
L142	+64	010,78	+2	638	461,26	R142	+62 557,79 +2 640 564,86
L143	+63	844,46	+2	638	578,30	R143	+62 465,01 +2 640 618,41
L144	+63	711,96	+2	638	678,43	R144	+62 225,93 +2 640 659,91
L145	+63	611,03	+2	638	765,09	R145	+62 011,41 +2 640 574,99
L146	+63	489,43	+2	638	882,30	R146	+61 909,10 +2 640 533,87
L147	+63	384,45	+2	638	997,94	R147	+61 751,15 +2 640 472,49
L148	+63	307,91	+2	639	093,02	R148	+61 711,36 +2 640 457,10
L149	+63	196,79	+2	639	246,69	R149	+61 533,09 +2 640 392,29
L150	+63	124,47	+2	639	362,82	R150	+61 359,20 +2 640 338,31
L151	+63	089,25	+2	639	428,22	R151	+61 242,98 +2 640 307,57
L152	+63	041,45	+2	639	516,96	R152	+61 183,92 +2 640 292,15
L153	+62	975,92	+2	639	659,36	R153	+61 007,16 +2 640 254,96
L154	+62	937,11	+2	639	751,75	R154	+60 910,96 +2 640 238,57

Vel
Sheet12 Van
of 14

P593/06

PADRESERWE KOORDINATE					ROAD RESERVE CO-ORDINATES						
LINKERKANT/LEFT HAND SIDE					REGTERKANT/RIGHT HAND SIDE						
	y	X	WG	31°		y	X				
L155	+62	906,14	+2	639	785,18	R155	+60	812,02	+2	640	227,87
L156	+62	892,99	+2	639	815,72	R156	+60	756,99	+2	640	226,06
L157	+62	884,46	+2	639	877,10	R157	+60	703,83	+2	640	227,14
L158	+62	805,91	+2	640	063,39	R158	+60	425,52	+2	640	264,51
L159	+62	667,52	+2	640	382,69	R159	+59	974,21	+2	640	337,14
L160	+62	628,61	+2	640	441,31	R160	+59	458,56	+2	640	419,99
L161	+62	581,10	+2	640	492,03	R161	+59	071,74	+2	640	482,20
L162	+62	525,44	+2	640	534,29	R162	+58	698,00	+2	640	542,00
L163	+62	464,91	+2	640	567,63	R163	+57	843,77	+2	640	679,98
L164	+62	398,23	+2	640	591,24	R164	+57	339,75	+2	640	768,26
L165	+62	329,58	+2	640	603,59	R165	+56	744,49	+2	640	871,74
L166	+62	259,47	+2	640	604,57	R166	+56	404,40	+2	640	931,18
L167	+62	206,15	+2	640	597,79	R167	+56	279,38	+2	640	953,29
L168	+62	102,34	+2	640	569,18	R168	+55	745,69	+2	641	046,25
L169	+62	025,15	+2	640	535,58	R169	+55	431,62	+2	641	102,95
L170	+61	917,88	+2	640	497,22	R170	+54	860,33	+2	641	206,01
L171	+61	689,90	+2	640	406,21	R171	+54	593,42	+2	641	255,90
L172	+61	545,31	+2	640	354,98	R172	+53	148,92	+2	641	517,46
L173	+61	370,28	+2	640	300,04	R173	+52	512,22	+2	641	632,39
L174	+61	194,05	+2	640	254,44	R174	+51	956,48	+2	641	735,75
L175	+61	015,18	+2	640	215,98	R175	+51	028,47	+2	641	908,93
L176	+60	814,79	+2	640	1BB,07	R176	+50	495,04	+2	642	008,26
L177	+60	653,66	+2	640	190,70	R177	+49	847,24	+2	642	130,52
L178	+60	579,60	+2	640	185,16	R178	+49	797,20	+2	642	144,48
L179	+60	559,61	+2	640	174,36	R179	+49	734,8B	+2	642	169,61
L180	+60	489,39	+2	640	184,29	R180	+49	665,23	+2	642	207,65
L181	+60	439,35	+2	640	222,80	R181	+49	216,74	+2	642	507,37
L182	+59	902,04	+2	640	309,39	R182	+49	071,23	+2	642	604,74
L183	+59	464,88	+2	640	380,65	R183	+48	808,95	+2	642	779,57
L184	+59	008,56	+2	640	454,25	R184	+48	588,87	+2	642	926,08
L185	+58	659,97	+2	640	510,56	R185	+48	519,59	+2	642	975,06
L186	+58	166,90	+2	640	589,68	R186	+48	301,09	+2	643	119,30
L187	+57	836,28	+2	640	643,66	R187	+48	134,61	+2	643	230,82
L188	+57	381,58	+2	640	722,79	R188	+47	882,78	+2	643	399,24
L189	+56	751,46	+2	640	832,81	R189	+47	547,19	+2	643	623,61
L190	+56	404,36	+2	640	893,00	R190	+47	402,26	+2	643	720,53
L191	+55	740,40	+2	641	009,48	R191	+47	088,49	+2	643	930,07
L192	+55	416,91	+2	641	067,52	R192	+46	639,48	+2	644	230,98
L193	+54	840,11	+2	641	171,58	R193	+46	237,18	+2	644	500,07
L194	+54	337,11	+2	641	262,73	R194	+45	817,32	+2	644	780,28
L195	+54	047,71	+2	641	314,84	R195	+45	736,16	+2	644	833,93
L196	+53	702,04	+2	641	377,79	R196	+45	675,48	+2	644	885,18
L197	+53	148,31	+2	641	479,23	R197	+45	587,77	+2	645	009,95
L198	+52	975,33	+2	641	508,72	R198	+45	546,00	+2	645	138,02
L199	+52	524,97	+2	641	592,29	R199	+45	542,87	+2	645	229,12
L200	+51	971,09	+2	641	695,12	R200	+45	539,80	+2	645	287,22
L201	+51	007,68	+2	641	875,15	R201	+45	530,63	+2	645	600,58
L202	+50	482,19	+2	641	973,20	R202	+45	507,81	+2	646	194,31
L203	+49	851,13	+2	642	090,72	R203	+45	501,49	+2	646	290,60
L204	+49	745,89	+2	642	122,96	R204	+45	459,78	+2	646	396,47
L205	+49	702,54	+2	642	143,46	R205	+45	412,97	+2	646	485,69

Vel :L3 Van 14 P593/06
Sheet of

PADRESERWE KOORDINATE				ROAD RESERVE CO-ORDINATES			
LINKERKANT/LEFT HAND SIDE				REGTERKANT/RIGHT HAND SIDE			
	Y	X	WG 31 ⁰		Y	X	
L206	+49 643,80	+2 642 176,53		R206	+45 364,52	+2 646 549,67	
L207	+49 265,08	+2 642 429,52		R207	+45 309,01	+2 646 615,65	
L208	+49 071,01	+2 642 559,58		R208	+45 191,33	+2 646 696,25	
L209	+48 791,61	+2 642 746,42		R209	+44 857,69	+2 646 924,28	
L210	+48 509,91	+2 642 934,52		R210	+44 526,60	+2 647 151,05	
L211	+48 276,36	+2 643 090,49		R211	+44 195,15	+2 647 377,68	
L212	+48 120,54	+2 643 194,87		R212	+43 825,81	+2 647 630,55	
L213	+47 853,09	+2 643 373,90		R213	+43 533,10	+2 647 830,80	
L214	+47 523,92	+2 643 594,41		R214	+43 201,25	+2 648 057,96	
L215	+47 372,18	+2 643 695,19		R215	+42 604,56	+2 648-465,88	
L216	+47 065,37	+2 643 900,54		R216	+42 522,97	+2 648 505,47	
L217	+46 601,91	+2 644 210,26		R217	+42 253,33	+2 648 606,80	
L218	+46 219,16	+2 644 466,26		R218	+42 180,36	+2 648 634,22	
L219	+45 811,05	+2 644 738,26		R219	+41 750,75	+2 648 793,32	
L220	+45 709,41	+2 644 807,50		R220	+41 437,22	+2 648 909,23	
L221	+45 678,57	+2 644 831,93		R221	+41 354,34	+2 648 950,63	
L222	+45 655,65	+2 644 853,45		R222	+40 987,82	+2 649 208,80	
L223	+45 572,60	+2 644 964,73		R223	+40 641,46	+2 649 456,15	
L224	+45 559,03	+2 644 984,24		R224	+40 166,06	+2 649 794,52	
L225	+45 522,21	+2 645 091,89		L113	+39 977,88	+2 649 928,97	
L226	+45 512,80	+2 645 145,50					
L227	+45 506,84	+2 645 261,73					
L228	+45 505,50	+2 645 311,27					
L229	+45 495,48	+2 645 616,50					
L230	+45 473,08	+2 646 180,35					
L231	+45 465,14	+2 646 252,14					
L232	+45 429,24	+2 646 379,54					
L233	+45 381,39	+2 646 467,40					
L234	+45 336,45	+2 646 528,82					
L235	+45 159,17	+2 646 678,12					
L236	+44 832,88	+2 646 900,67					
L237	+44 503,53	+2 647 126,02					
L238	+44 177,41	+2 647 349,20					
L239	+43 804,32	+2 647 604,04					
L240	+43 481,56	+2 647 825,23					
L241	+43 191,51	+2 648 023,32					
L242	+42 597,62	+2 648 428,74					
L243	+42 485,33	+2 648 481,44					
L244	+42 170,34	+2 6"48 598,83					
L245	+41 738,64	+2 648 759,51					
L246	+41 422,12	+2 648 876,63					
L247	+41 335,26	+2 648 919,52					
L248	+40 976,98	+2 649 172,14					
L249	+40 620,70	+2 649 426,41					
L250	+40 302,63	+2 649 652,30					
L251	+40 002,96	+2 649 866,27					
R102	+39 959,37	+2 649 897,39					